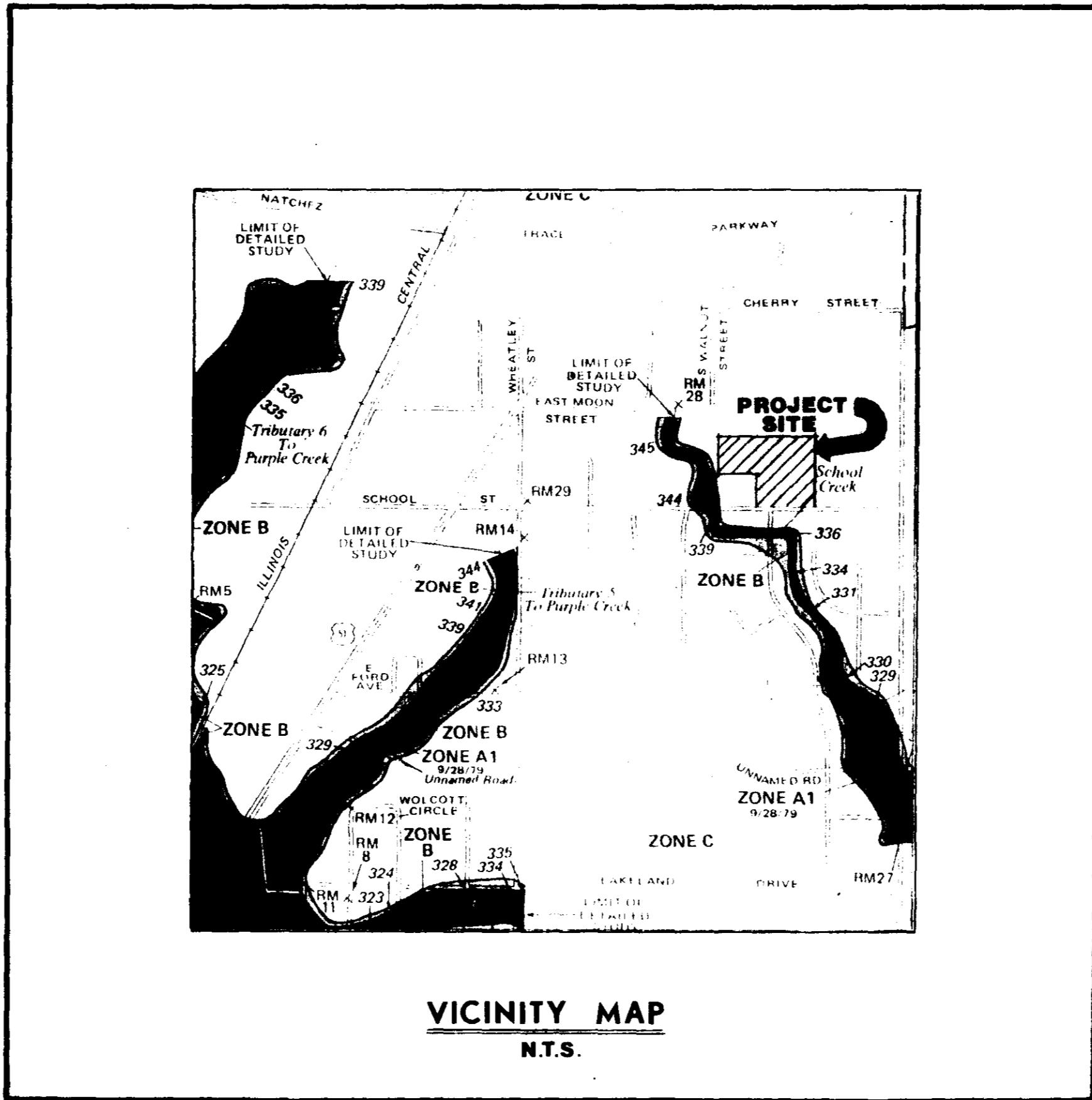


CONSTRUCTION PLANS KELLY'S GLEN

CITY OF RIDGELAND



INDEX OF DRAWINGS

<u>SHT. NO.</u>	<u>DESCRIPTION</u>
1	COVER SHEET.
2	SITE PLAN.
3	PLAN - PROFILE, STREET.
4	SANITARY SEWER CONSTRUCTION DETAILS.
5	WATER SYSTEM CONSTRUCTION DETAILS.

DEVELOPED BY: SARTAIN ASSOCIATES, INC.

P.O. BOX 342
MADISON, MISSISSIPPI
39110

THIS DRAWING CORRECTED
AS BUILT

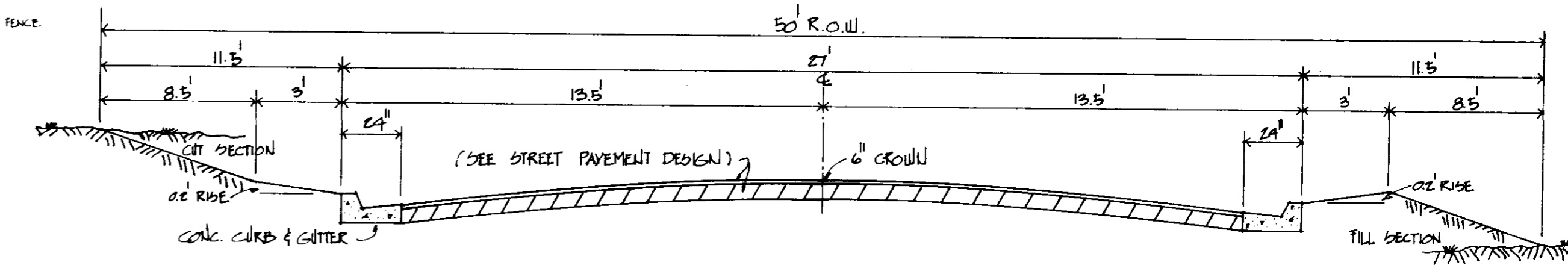
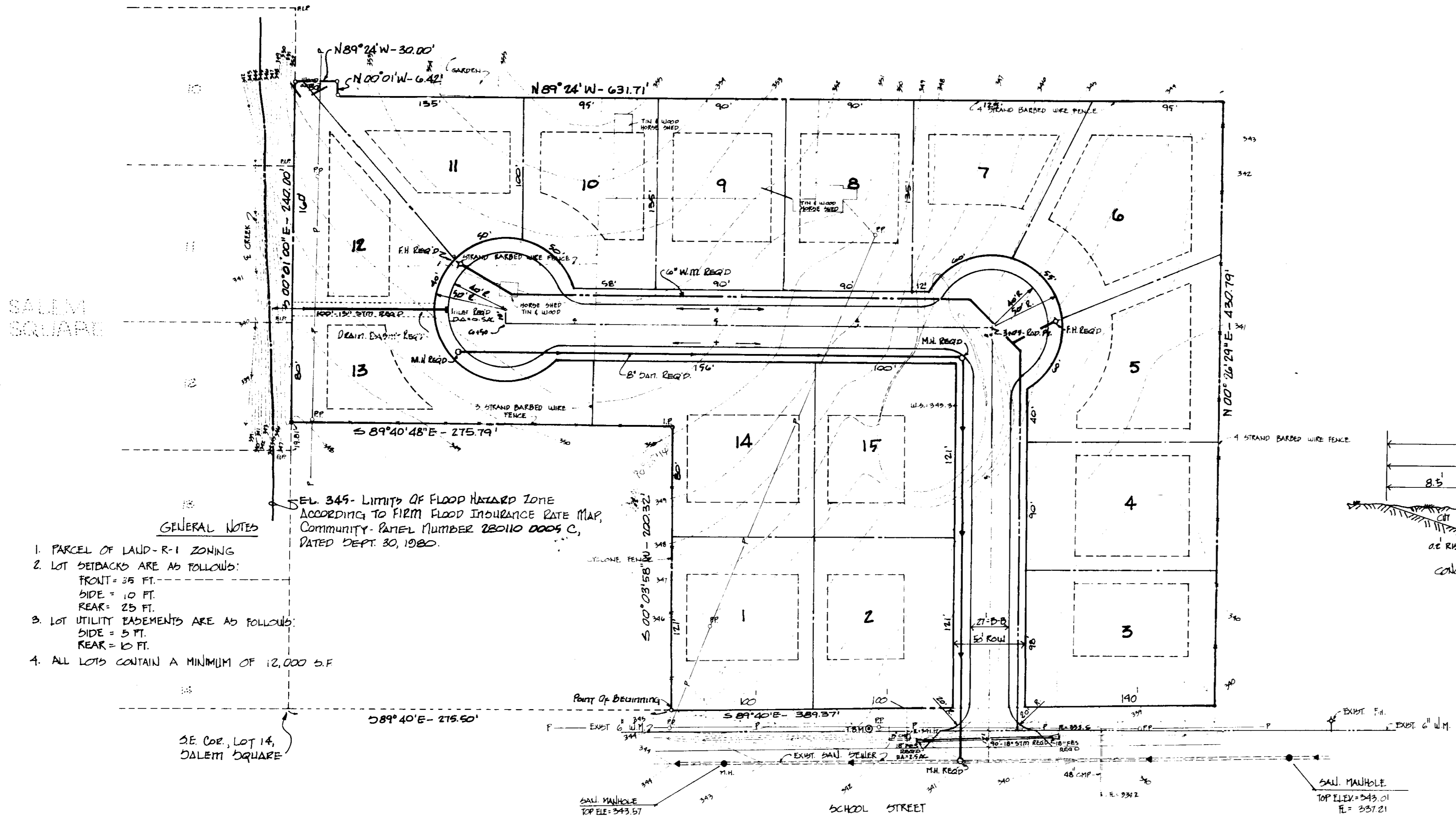
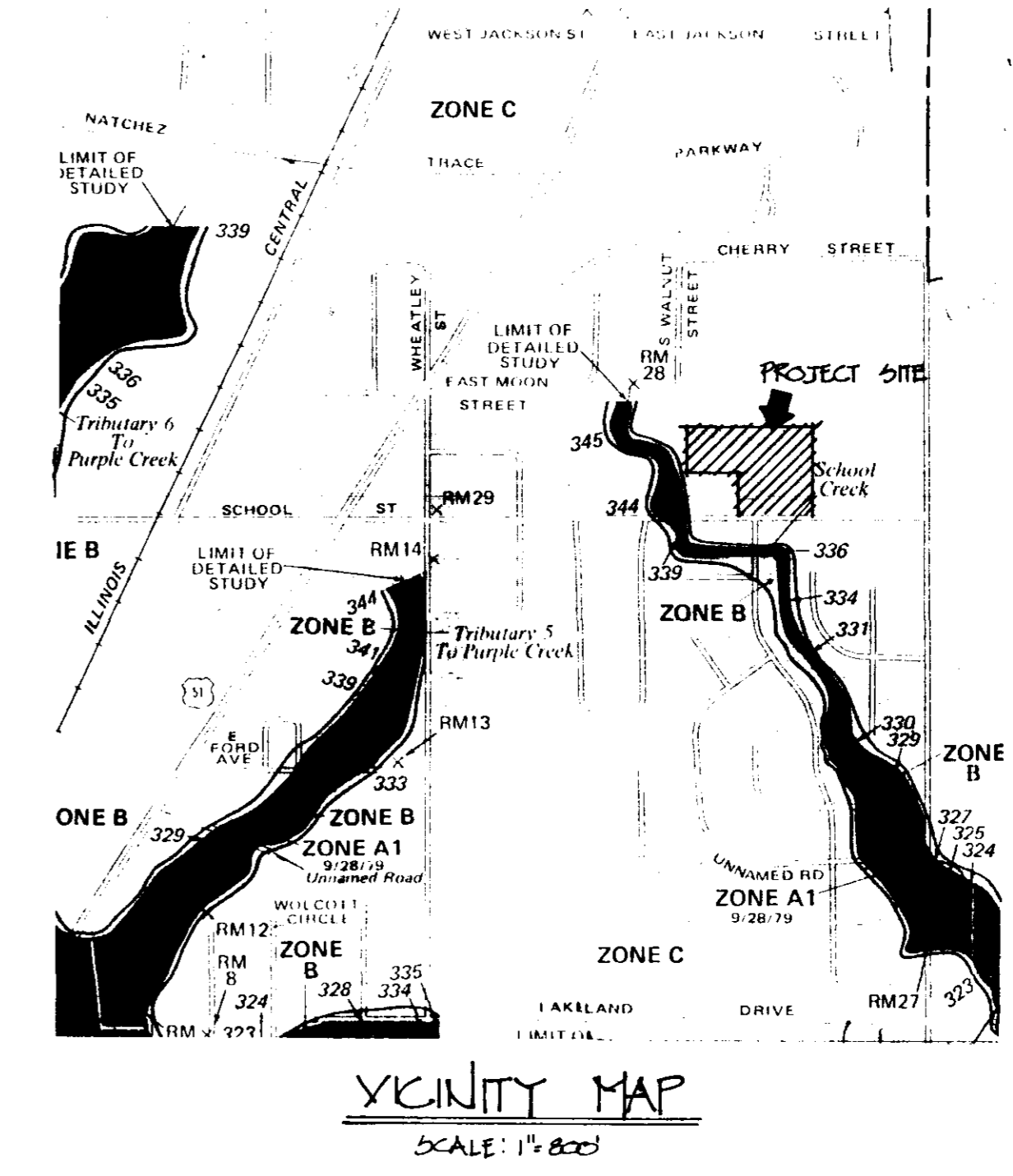
DATE 10-30-85
BY [Signature]

DESIGNED BY: KARL P. LONG, CONSULTING ENGINEER

5 LAKELAND CIRCLE
JACKSON, MISSISSIPPI
39216

© TBM. - ELEVATION = 345.14 MSL.
RAILROAD SPIKE IN SIDE
OF POWER POLE ON NORTH
SIDE OF SCHOOL STREET,
APPROX. 245' WEST OF S.E.
PROPERTY CORNER.

SCALE: 1"=50'



STREET PAVEMENT DESIGN
A. - 1 1/2" TYPE "B" ASPHALT WEARING COURSE & 5" ASPHALTIC CONCRETE BASE.
B. - 2 1/2" TYPE "C" ASPHALT WEARING COURSE & 8" COMPACTED CLAY GRAVEL BASE.

TYPICAL STREET SECTION
N.T.S.

- GENERAL NOTES
1. PARCEL OF LAND - R-1 ZONING.
 2. LOT SETBACKS ARE AS FOLLOWS:
FRONT - 35 FT.
SIDE - 10 FT.
REAR - 25 FT.
 3. LOT UTILITY EASEMENTS ARE AS FOLLOWS:
SIDE - 5 FT.
REAR - 10 FT.
 4. ALL LOTS CONTAIN A MINIMUM OF 12,000 S.F.

S.E. COR. LOT 14,
SALEM SQUARE

PROPOSED LOT LAYOUT
SCALE: 1"=50'

A part of Lot 5, in Block 22 Highland Colony, a subdivision in the County of Madison according to plats on file in the office of the Chancery Clerk of Madison County at Canton, Mississippi; said parcel of land also being situated in the NE 1/4 of Section 30, T7N, R2E, Ridgeland, Mississippi, containing 5.3 acres, more or less, and being more particularly described as follows:

Commence at the Southeast corner of Lot 14, Salem Square, a subdivision, according to the plat thereof, on file in said office of the Chancery Clerk of Madison County at Canton, Mississippi; said point also being on the North right of way line of School Street, (as said street is now laid out and used, June, 1985); run thence S 89°40' E along said North right of way line of School Street for a distance of 275.59 feet to the POINT OF BEGINNING of the parcel of land here-in described; continue thence S 89°40' E along said North right of way line of School Street - 389.37 feet; leaving said North right of way line of School Street, run thence N 00°26'29" E - 430.79 feet; thence N 89°24' W - 431.71 feet; thence N 00°01' W - 6.42 feet; thence N 89°24' W - 70.00 feet; thence S 00°01' E - 240.00 feet; thence S 89°40'48" E - 275.79 feet; thence S 00°03'58" W - 200.32 feet to the POINT OF BEGINNING.

WATER SPECIFICATIONS

- 1-Water mains are to be thoroughly flushed and sterilized in accordance with AWWA Standard C-601. Proof of two (2) satisfactory bacteriological tests from the Mississippi State Board of Health laboratory.
- 2-Water mains are to be pressure tested in accordance with AWWA Standard C-600-77, Section 4, results to be furnished to the ENGINEER.
- 3-Water mains to be C-900 PVC or Class 51 Ductile Iron, with 36" minimum cover.
- 4-Fire Hydrants to be 4-way traffic model, Mueller A-423 or with 1 1/2" Tee Hydrant.
- 5-Gate valves to be standard AWWA with non-rising stems, iron bodies, bronze mounted and tested to 350 psi, Mueller or American.
- 6-All services shall include Mueller corporation stop at the main, Mueller Mark II curb stop, and minimum 3/4" polybutylene tubing.

SEWER SPECIFICATIONS

- 1-All sewer mains and services shall be Extra Strength Vitrified Clay Pipe (ASTM C-700) or ABS sewer pipe (ASTM D-2680).
- 2-Manholes to be precast concrete conforming to ASTM C-478.
- 3-Manhole castings to be Harper No. 1, MSPE Standard, or approved equal.
- 4-Sewer mains to be tested for a maximum infiltration or exfiltration of 200 gpd per inch per mile of pipe, results to be furnished to the ENGINEER.
- 5-All sewer services to be marked at the property line with a 2" diameter creosote post or other acceptable marker.
- 6-Bedding for sewer pipe shall be class "C" in accordance with ASTM C-12 for rigid pipe and Class III in accordance with ASTM D-231 for flexible pipe.
- 7-Manholes shall be waterproofed with an application of COPPER 100% Coal Tar Epoxy or approved equal.
- 8-All sewers 24 inches or less will be laid with straight alignment between manholes and will be checked by either laser or taping methods.
- 9-All backfill will be of suitable material, hand tamped to within one (1) foot of the top of the pipe, and otherwise placed in such a manner as not to disturb the alignment of the pipe.
- 10-Sewer and water mains will have a minimum separation of (10) feet horizontally and 18 inches vertically with relation to each other.
- 11-Inlet and outlet to manholes will be constructed in such a manner that the connection will be flexible and not damage the sewer main in the event of manhole settlement.

- GENERAL NOTES:
1. CONSTRUCTION AND MATERIAL SHALL BE IN ACCORDANCE WITH CITY OF RIDGELAND SPECIFICATIONS.
 2. LOT DIMENSIONS SHOWN ARE SUBJECT TO MINOR CHANGE.
 3. SAN. & WATER SERVICE TO LOTS SHALL BE MARKED WITH A 2" (MIN) CREOSOTE POST AND MARKER.

PRELIMINARY SITE PLAN
KELLY'S GLEU

BEING A PART OF LOT 5, BLOCK 22,
HIGHLAND COLONY, RIDGELAND, MADISON
COUNTY, MISSISSIPPI

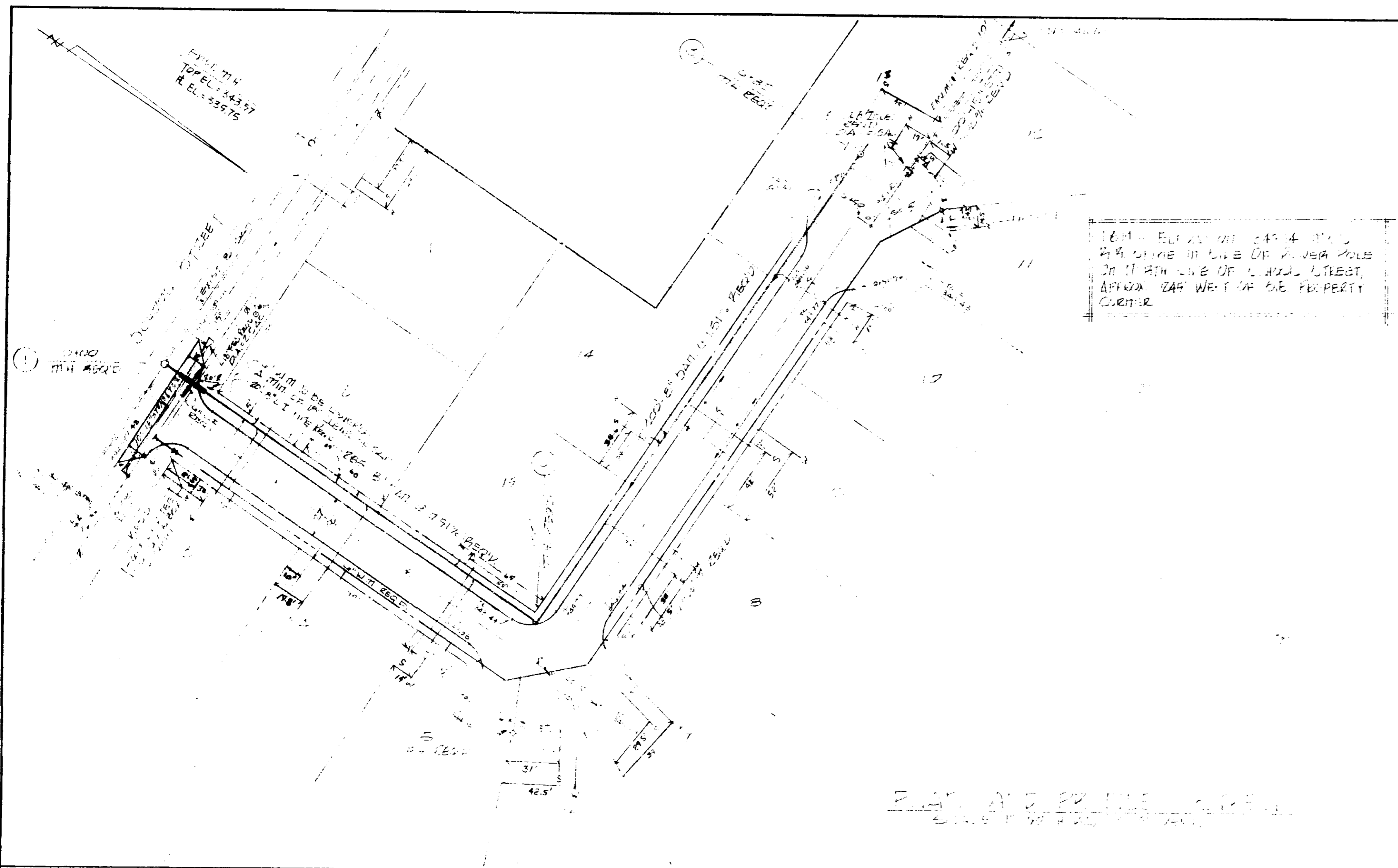
SARTAIN ASSOC. INC.
DEVELOPER

KARL P. LONG, CONSULTING ENGINEER
4526 OFFICE PARK DR., JACKSON, MISSISSIPPI

MAY 17, 1985
(REVISED: 6-24-85)

THIS DRAWING CORRECTED
AS BUILT
DATE 12-30-85
SIGNED: Karl P. Long

PLAN
 DATE: _____
 DRAWN BY: _____
 CHECKED BY: _____
 NO. _____

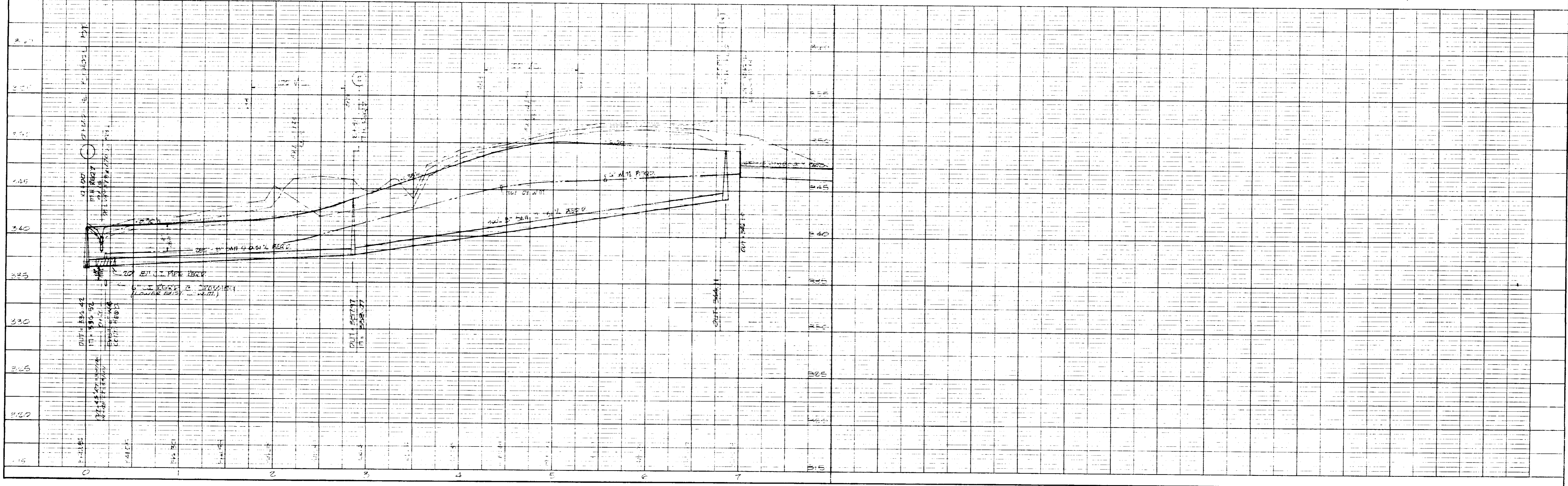


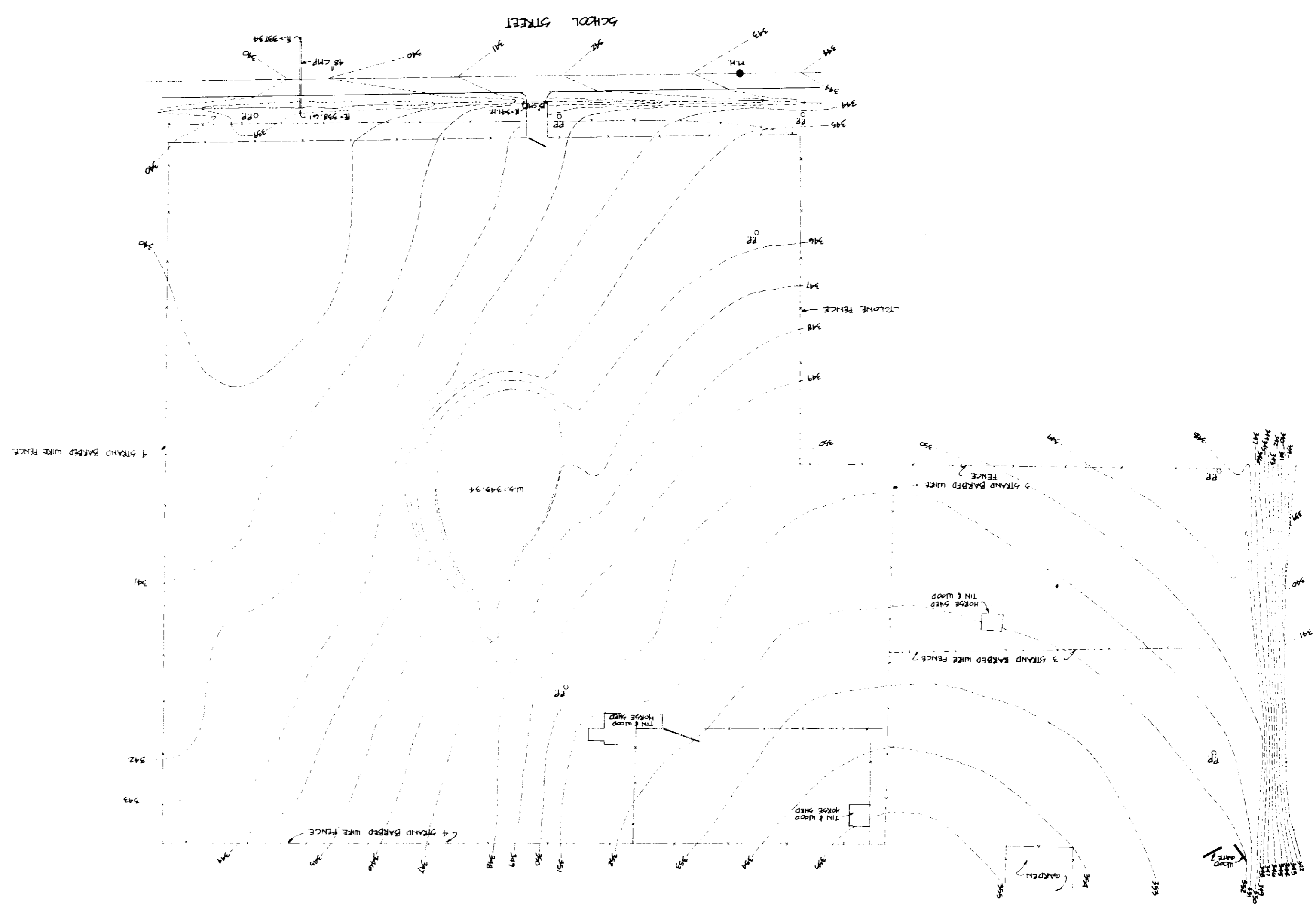
1000' DIA. 12\"/>

PLAN AND PROFILE

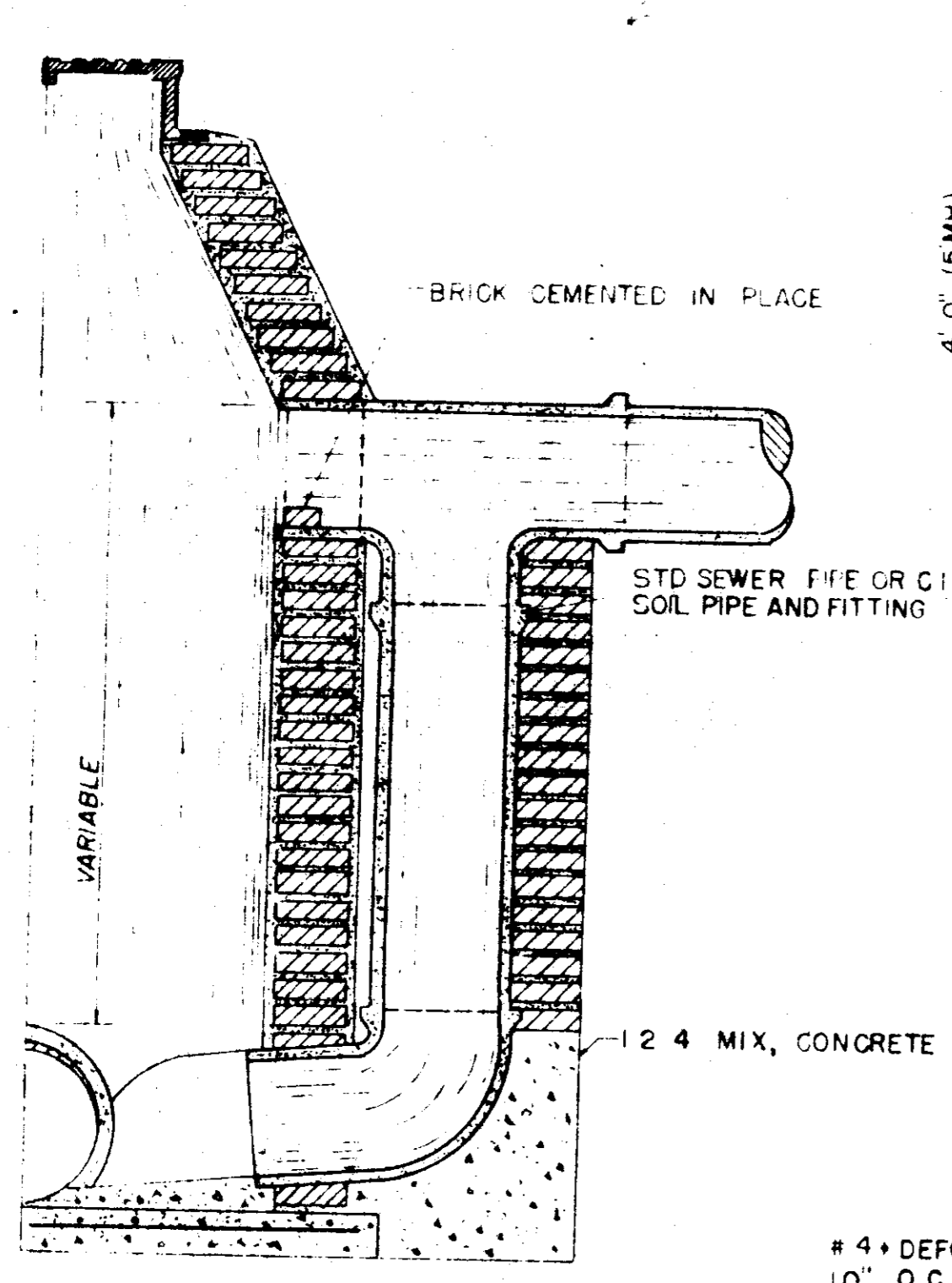
AS BUILT
 DATE: 11-1-85
 BY: [Signature]

PROFILE
 DATE: _____
 DRAWN BY: _____
 CHECKED BY: _____
 NO. _____

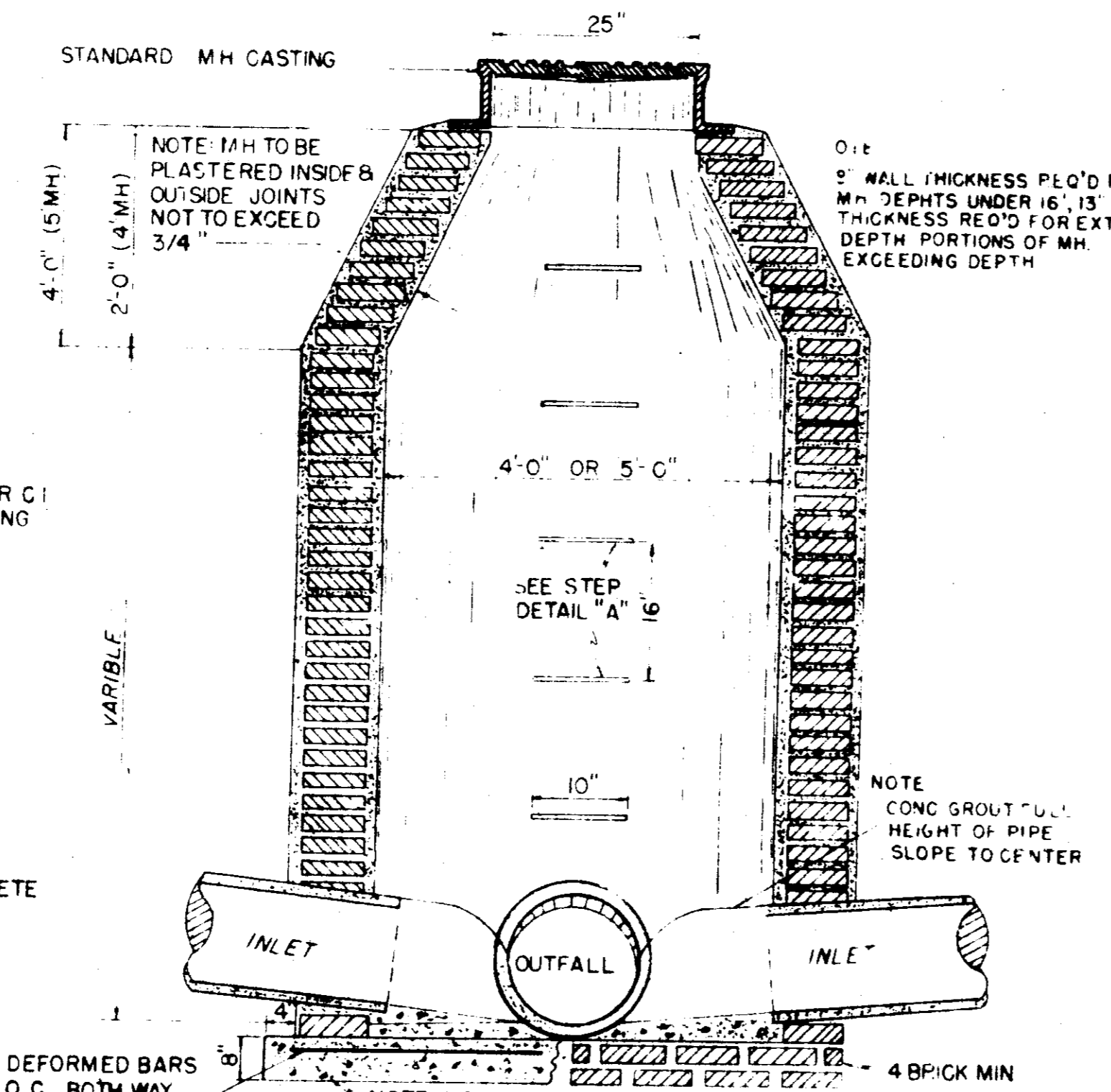




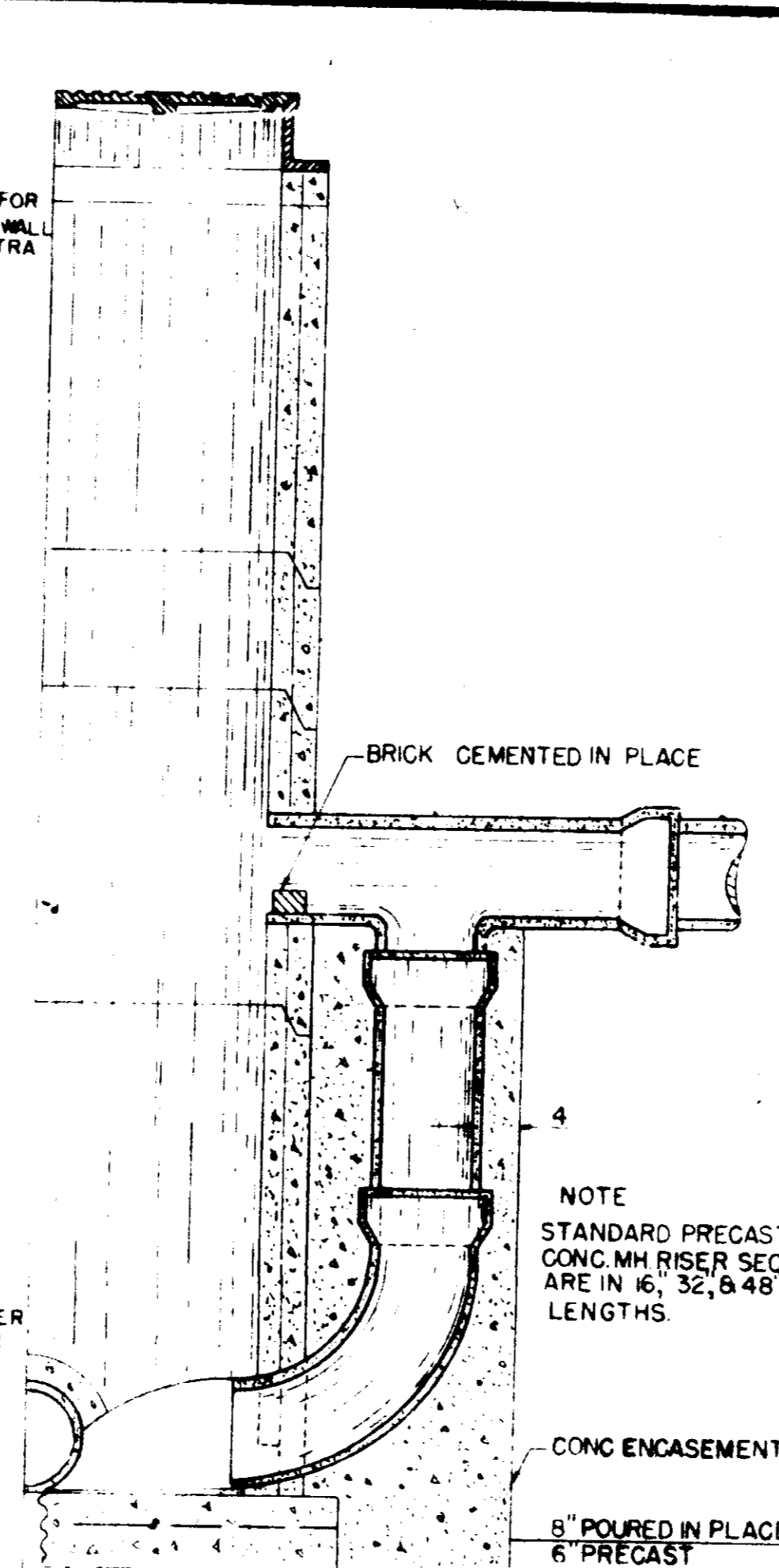
SCALE: 1"=50'



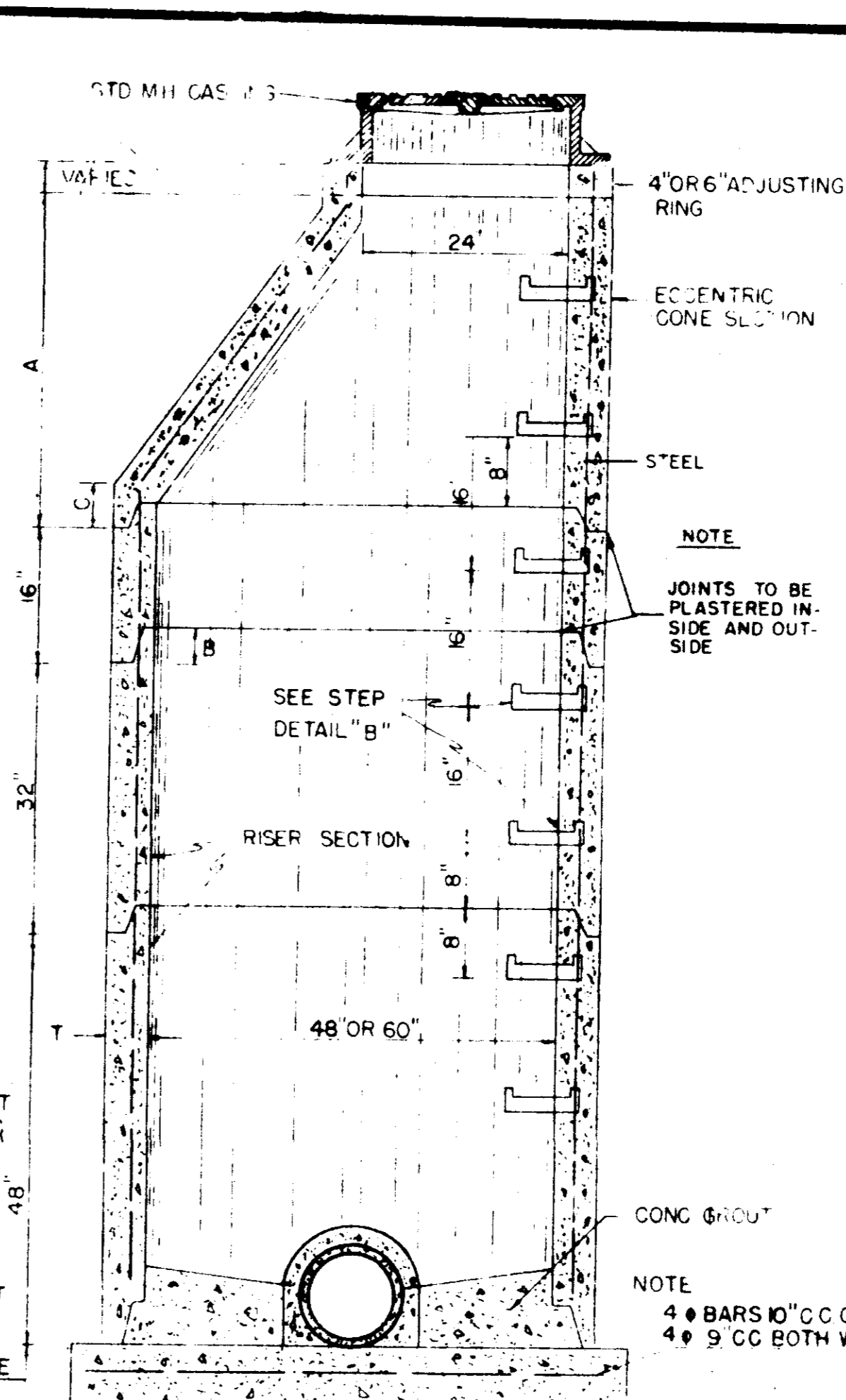
SECTION BRICK MANHOLE WITH DROP CONNECTION



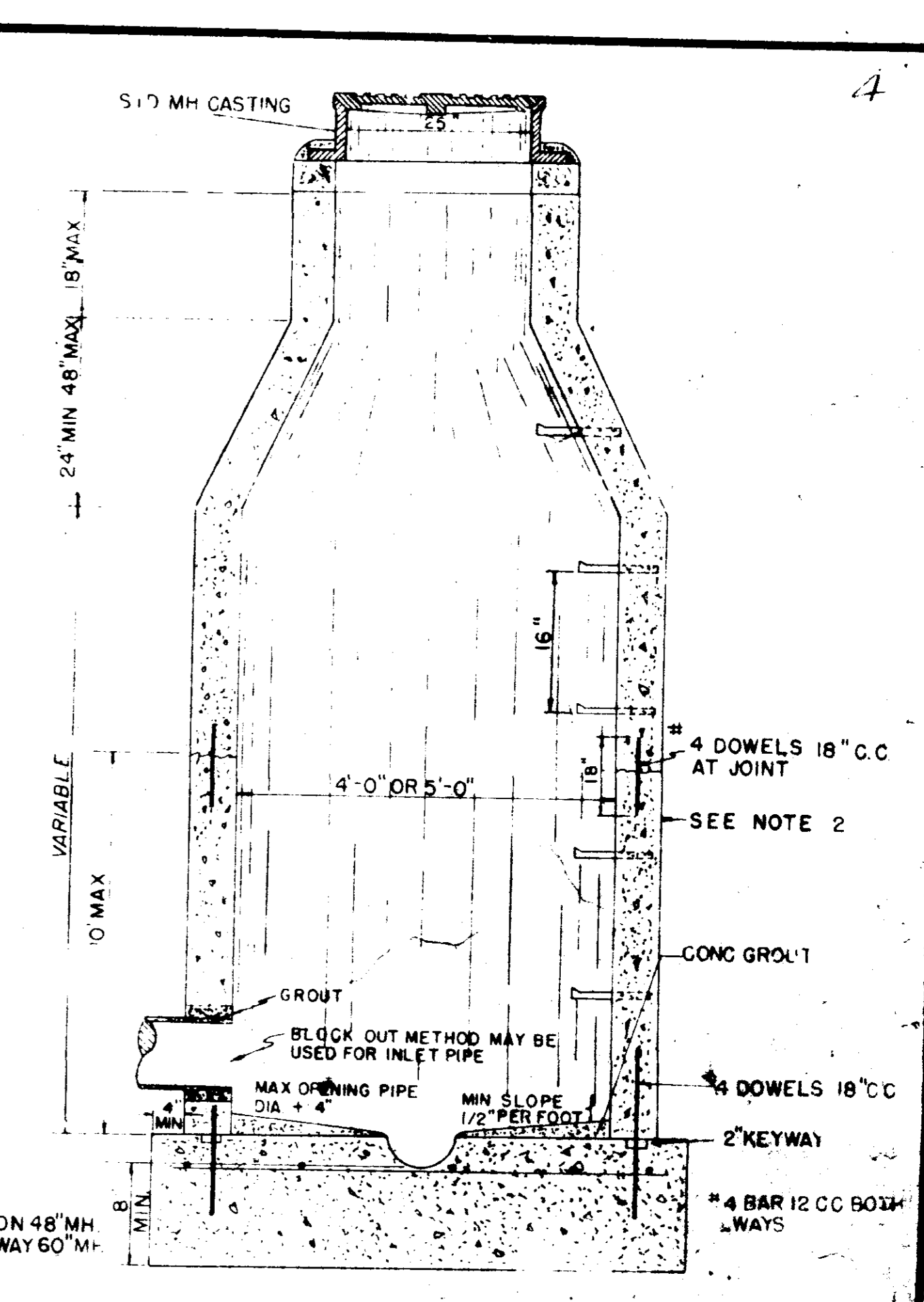
SECTION BRICK MANHOLE



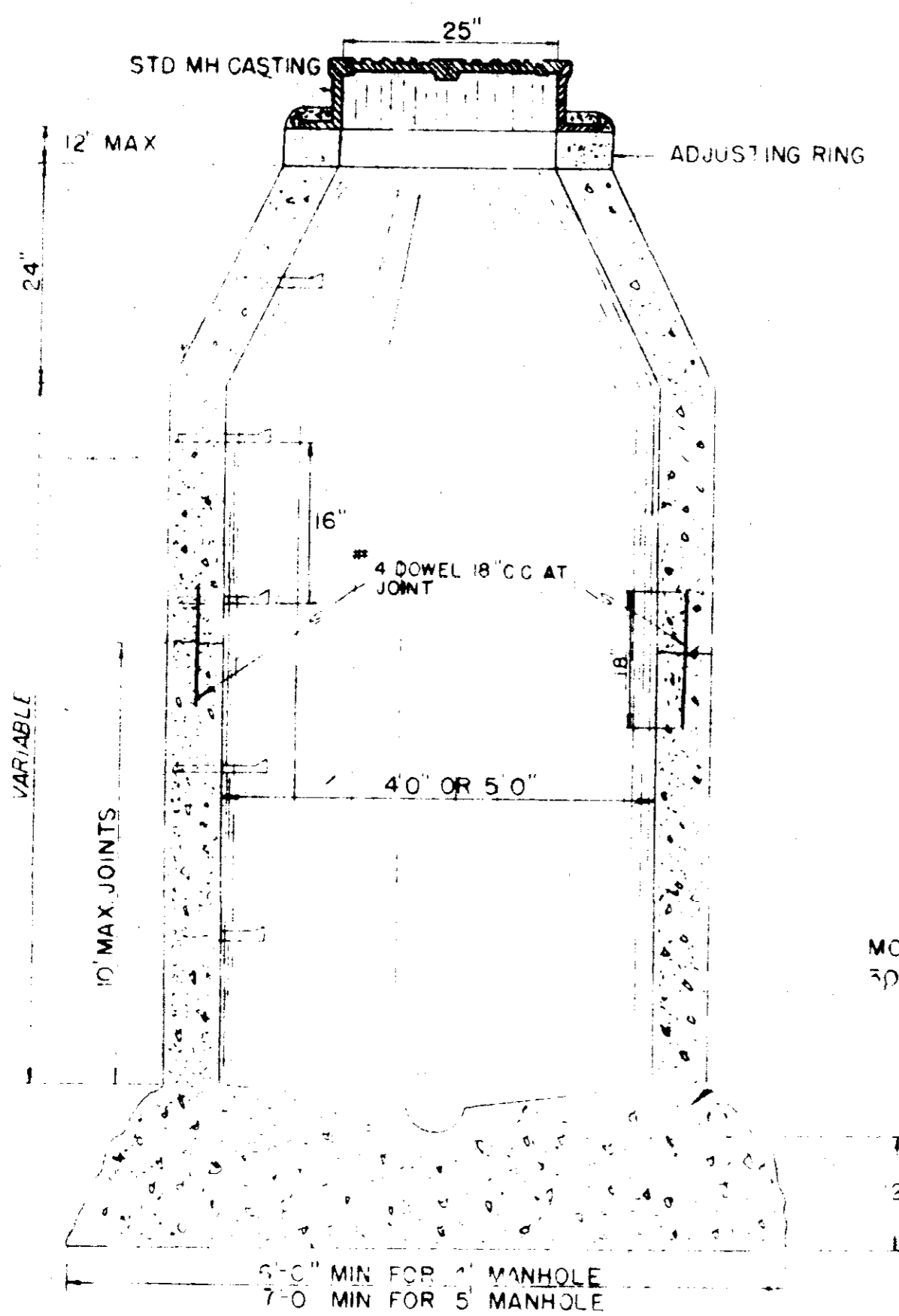
SECTION OF PRECAST CONCRETE MANHOLE WITH DROP CONN.



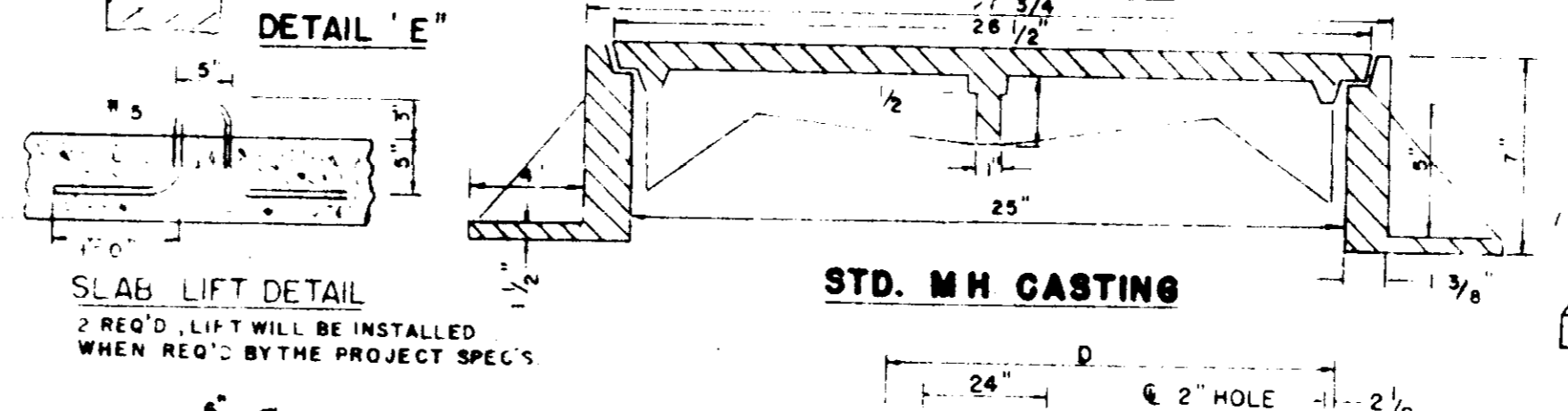
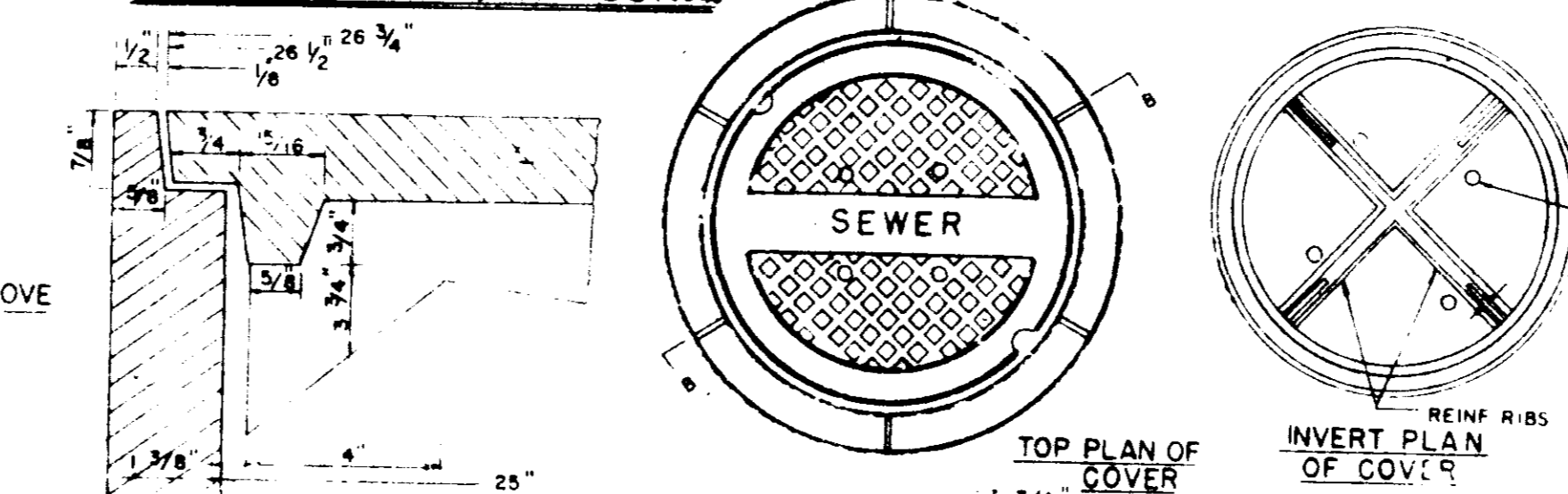
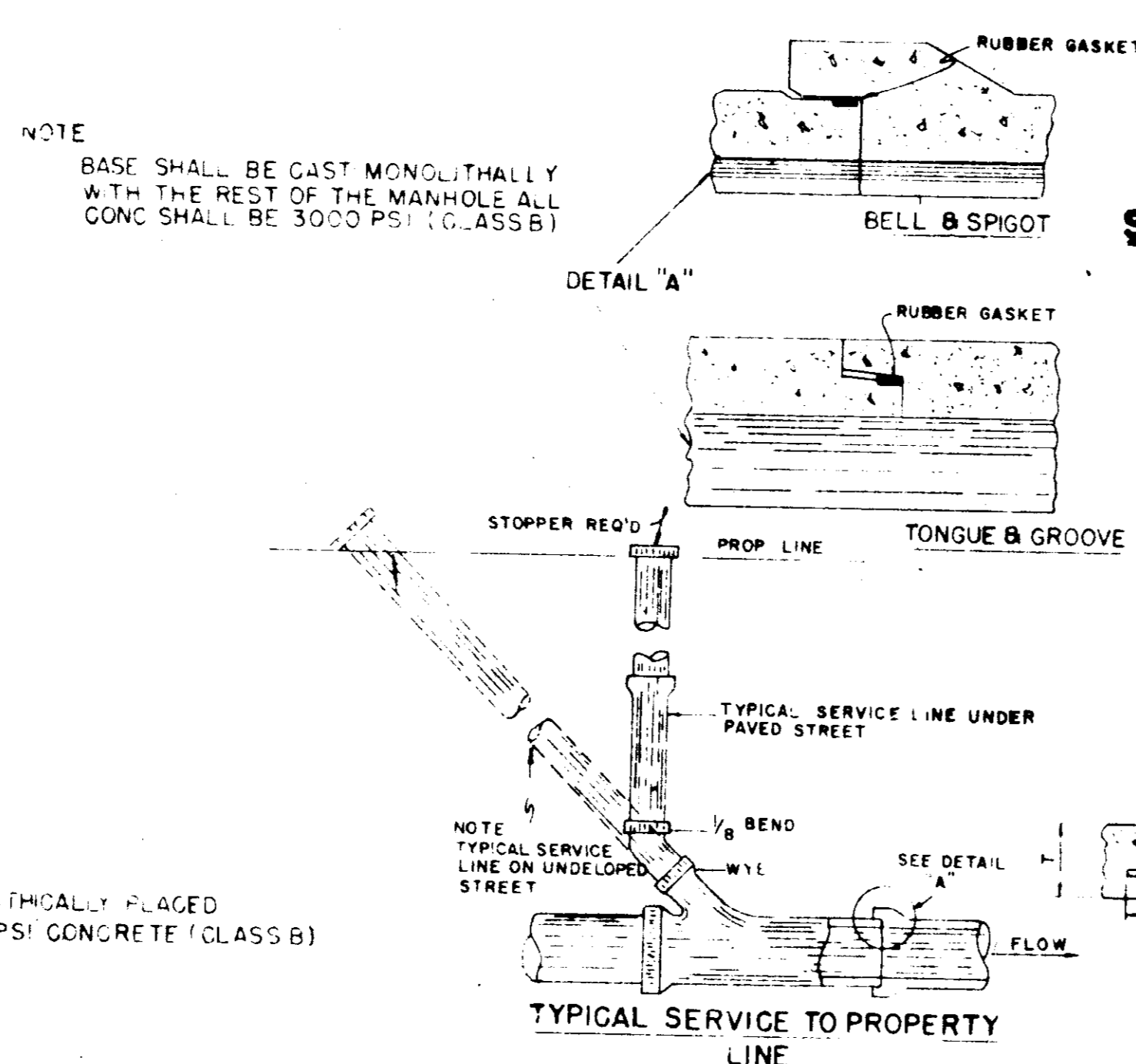
SECTION OF PRECAST CONCRETE MANHOLE



CAST-IN-PLACE MANHOLE WITH PREPOURED BASE



MONOLITHICALLY CAST-IN-PLACE MANHOLE

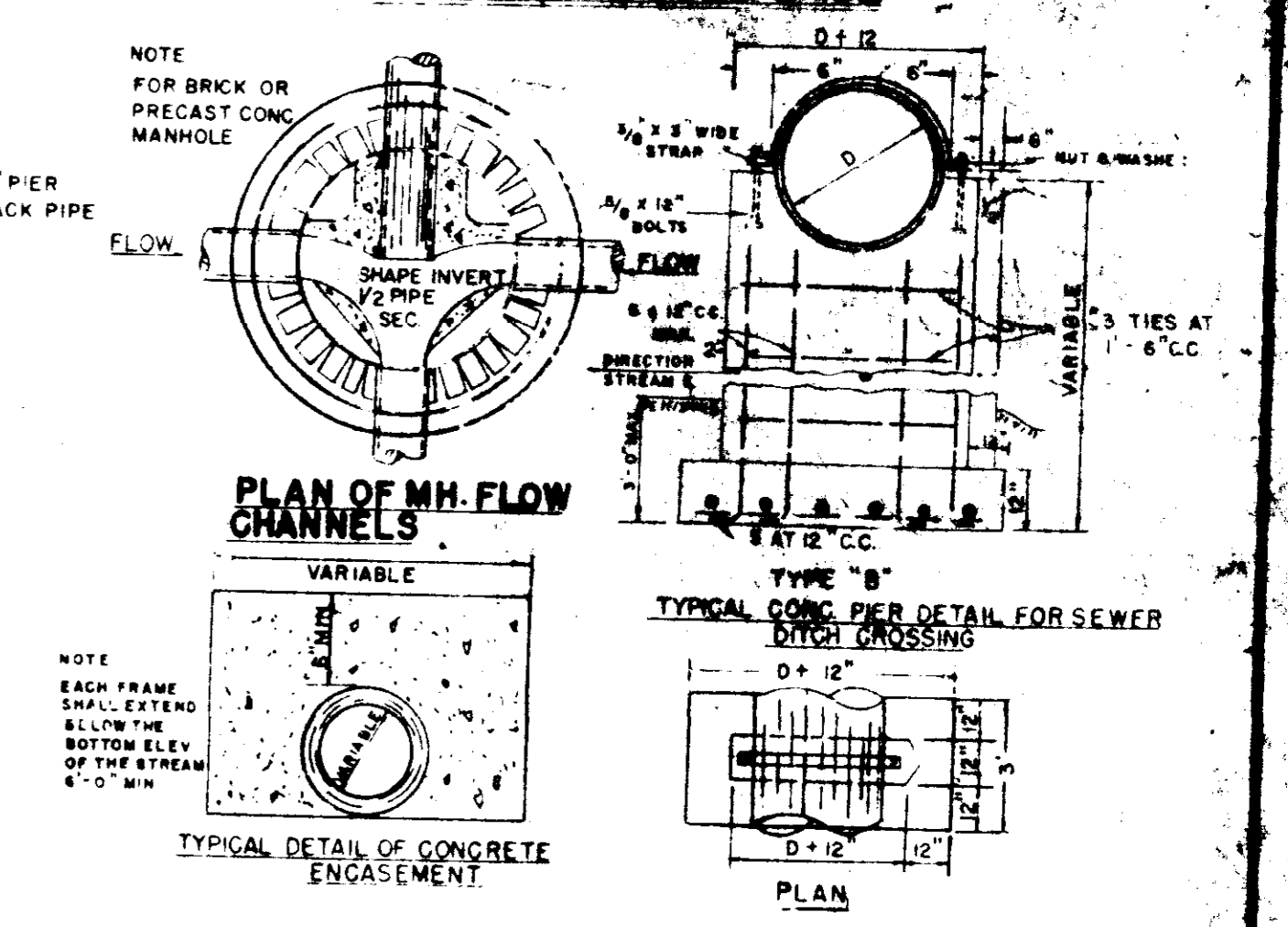


DIMENSION AND WEIGHT TABLE

PIPE DIA.	W	D	T	EST. WT.
48"	5"	58"	6"	1,145 LBS
54"	5 1/2"	65"	8"	1,990 LBS
60"	6"	72"	8"	2,515
66"	6 1/2"	79"	8"	3,090
72"	7"	86"	8"	3,720
84"	8"	100"	8"	5,140
96"	9"	114"	8"	6,775
108"	9"	126"	8"	8,345

SECTION OF PRECAST CONCRETE MANHOLE

DIA.	A	B	C	T	APPROX. CONC. REQ'D. (CY)	APPROX. BRICK REQ'D. (K)
48"	38"	3 1/2"	5"	5"	2075	870
60"	36"	5"	9"	6"	3455	1250



GENERAL NOTES

WHERE SOIL AT THE ELEVATION OF THE BASE OF A MANHOLE IS UNSATURATED THE THICKNESS AND/OR BASE ARE TO BE INCREASED AS DIRECTED BY THE ENGINEER.

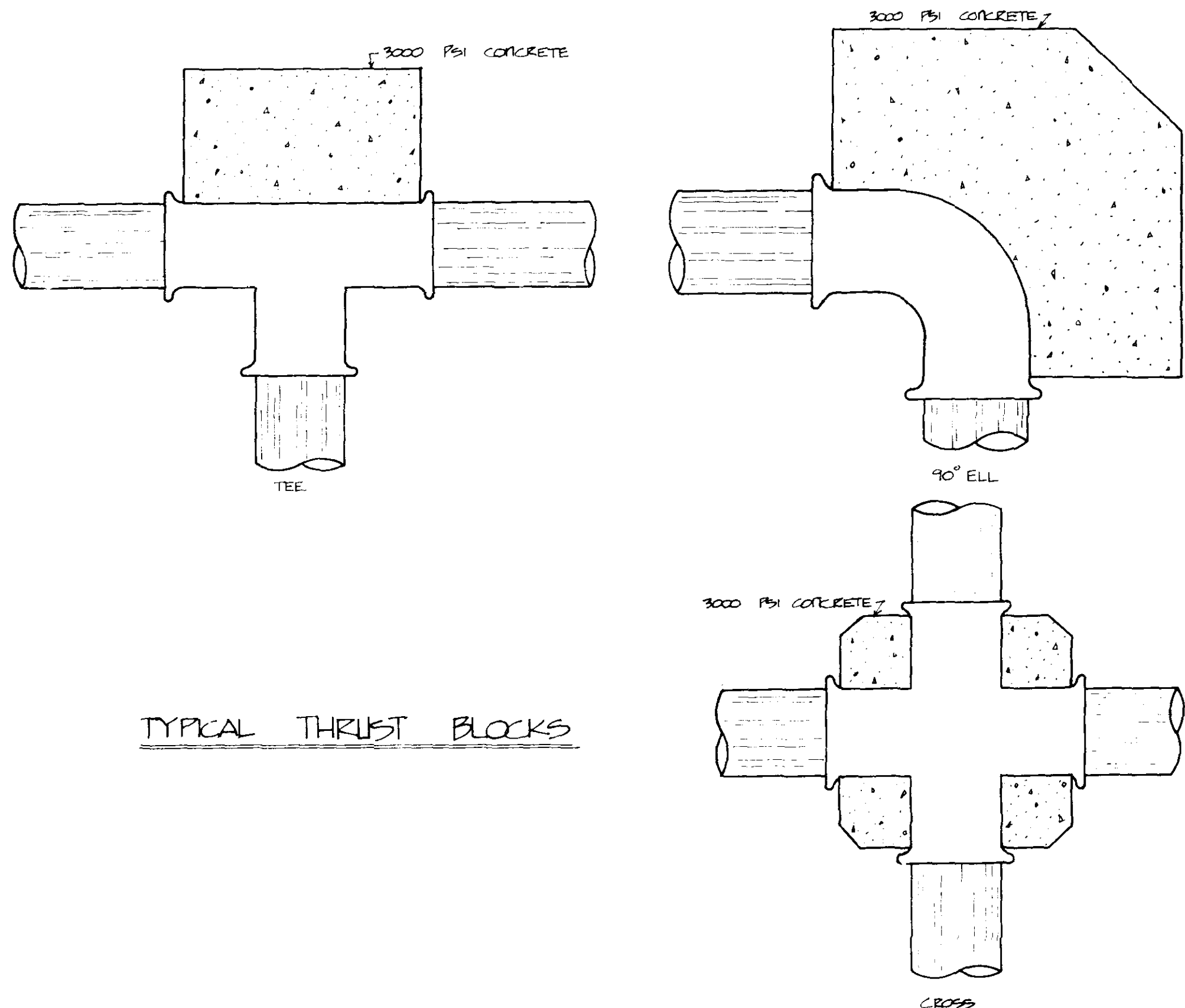
PIPE JOINTS FORMED BY JULI AND HOT POURED BITUMINOUS COMPOUND ARE PERMISSIBLE ONLY WHERE SPECIAL PROVISIONS ARE APPLICABLE.

JOINTS PROMED BY RUBBER GASKET PLUS REFINED PLASTIC CEMENT COMPOUND WILL BE REQUIRED.

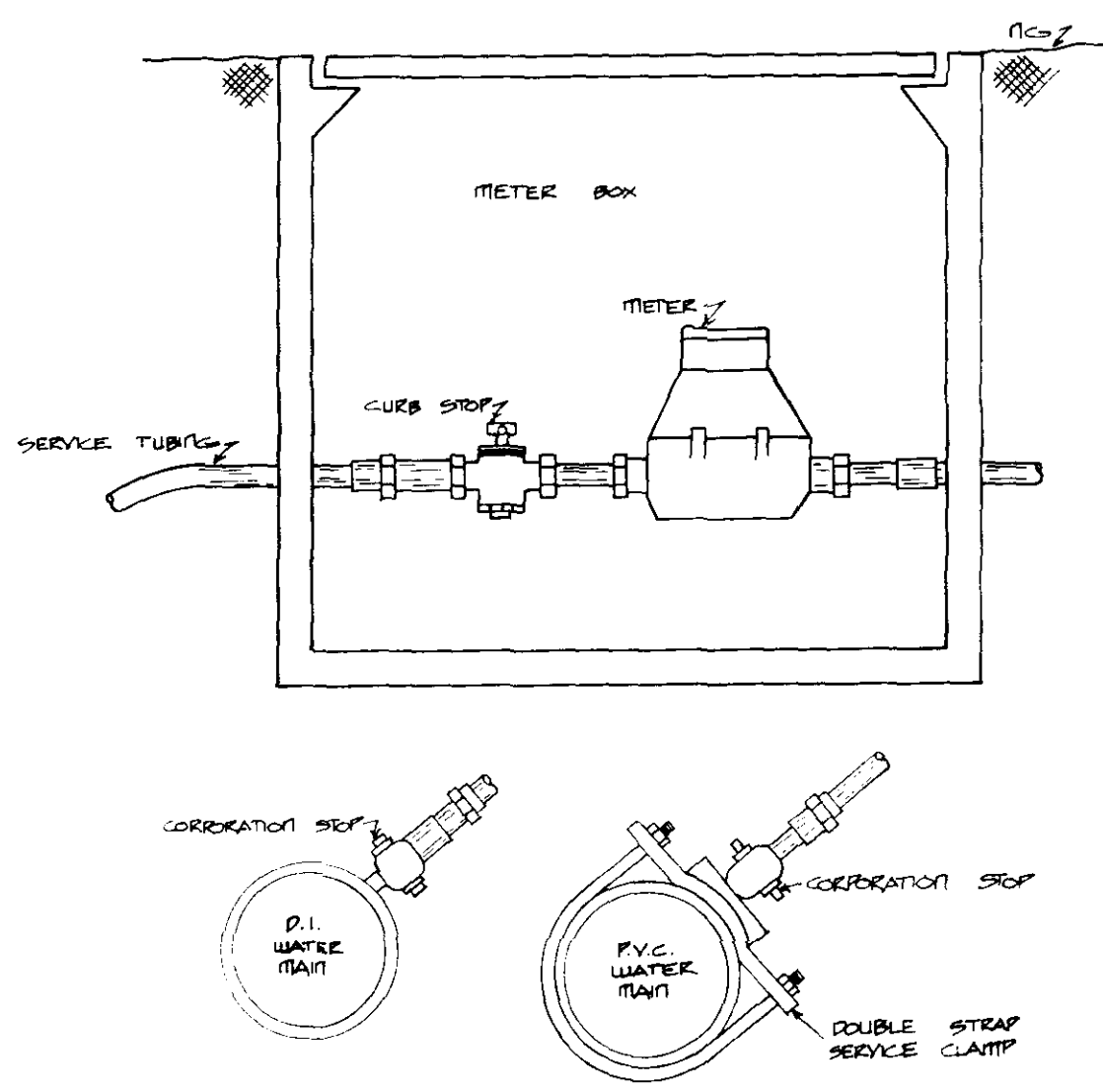
SANITARY SEWER MANHOLE & APPURTENANCE FOR 6" TO 42" SEWER

APPROVED

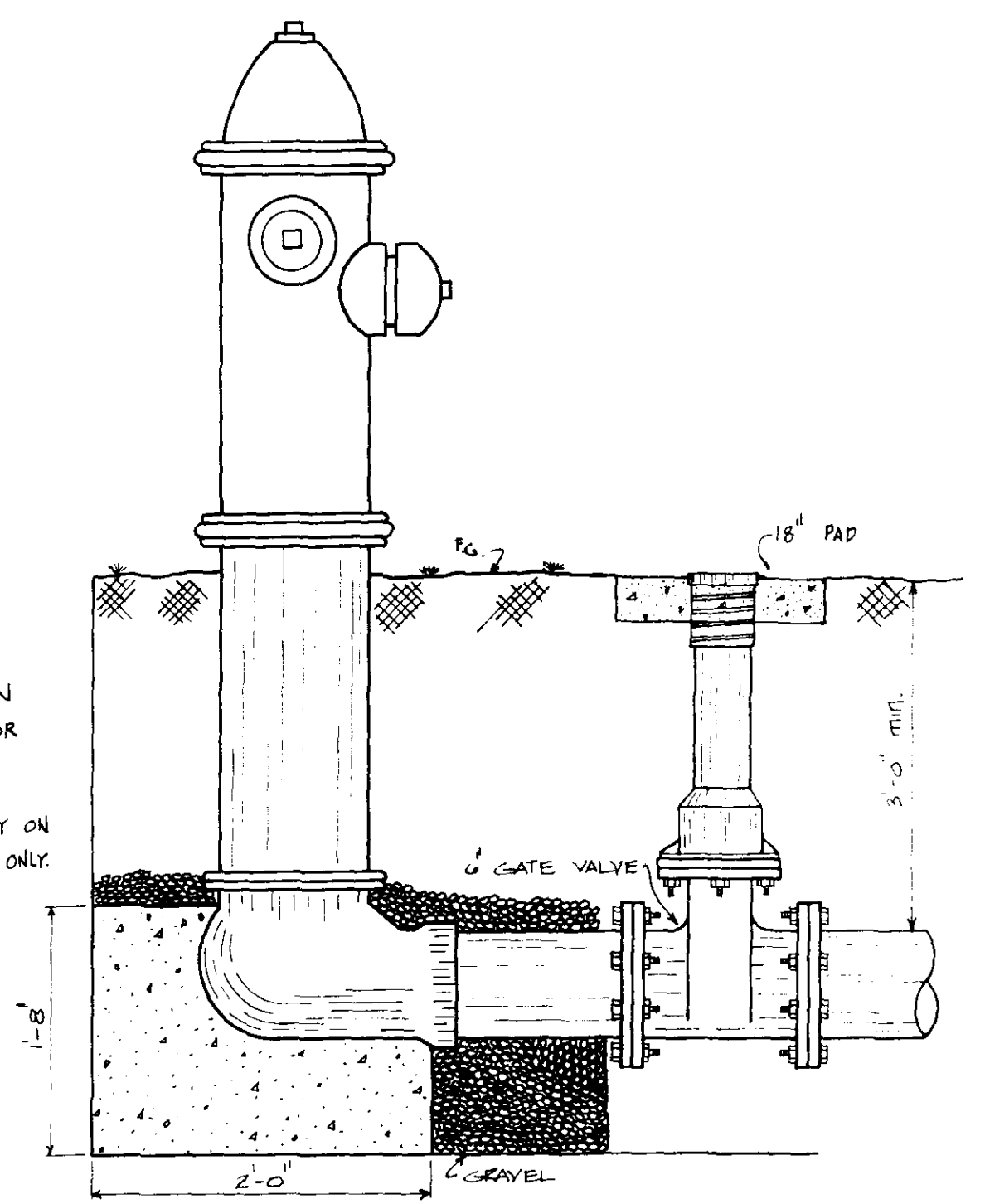
REV. 8-0-95



TYPICAL THRUST BLOCKS

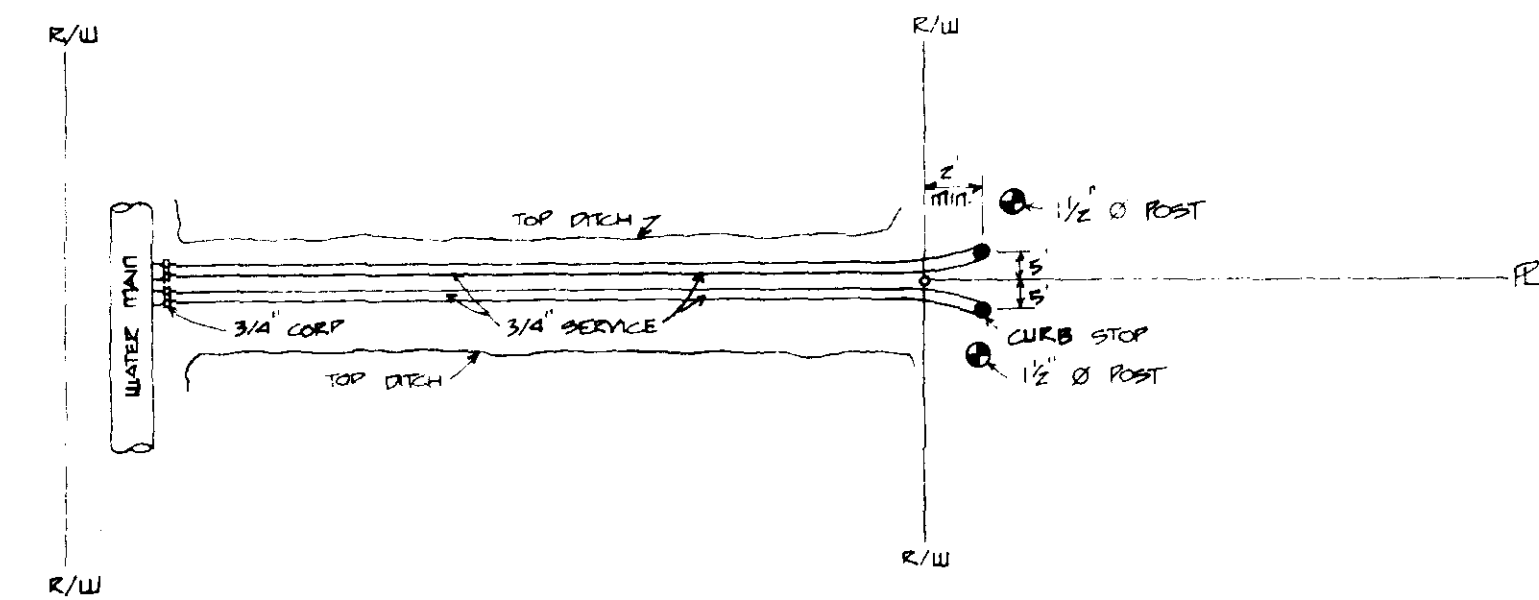


TYPICAL SERVICE ASSEMBLY

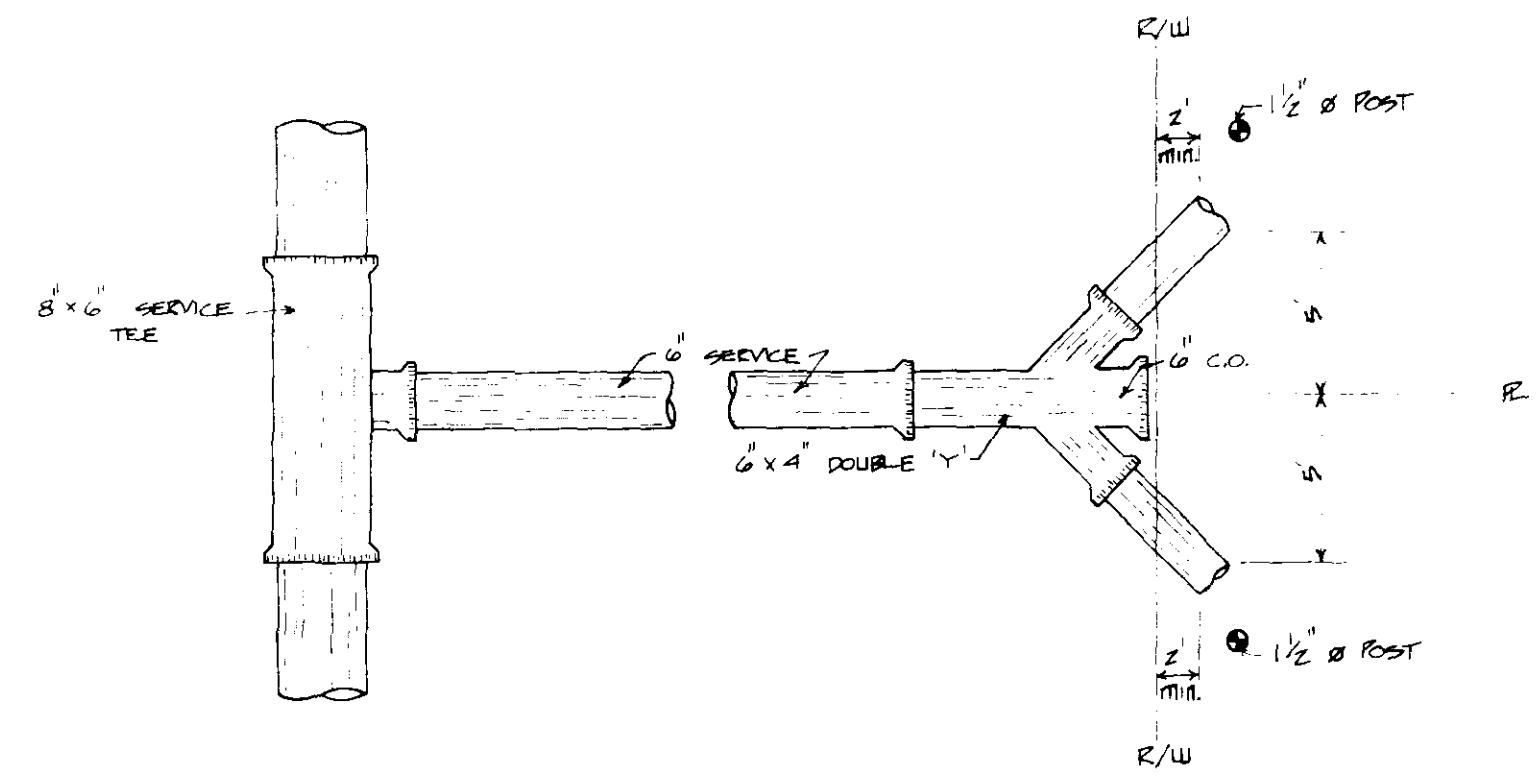


NOTE: 1- ALL F.H. INSTALLATION REQUIRE A D.I. ANCHOR COUPLING.
2- VALVE REQUIRED ONLY ON 8" OR GREATER MAIN ONLY.

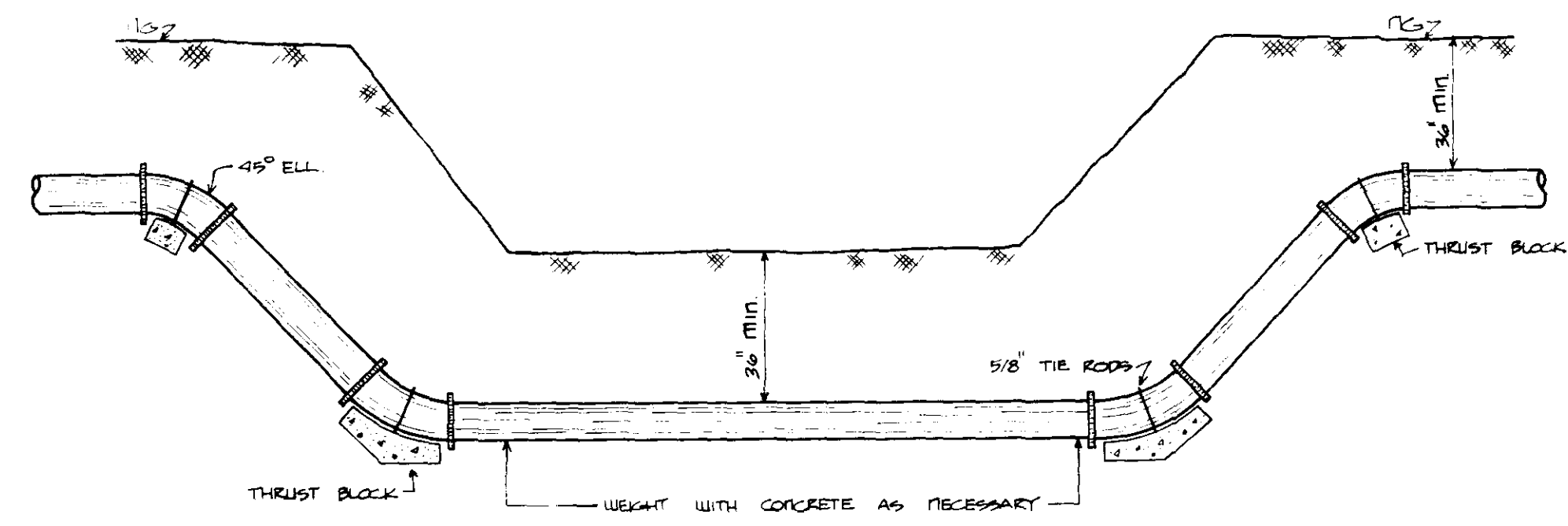
FIRE HYDRANT DETAIL



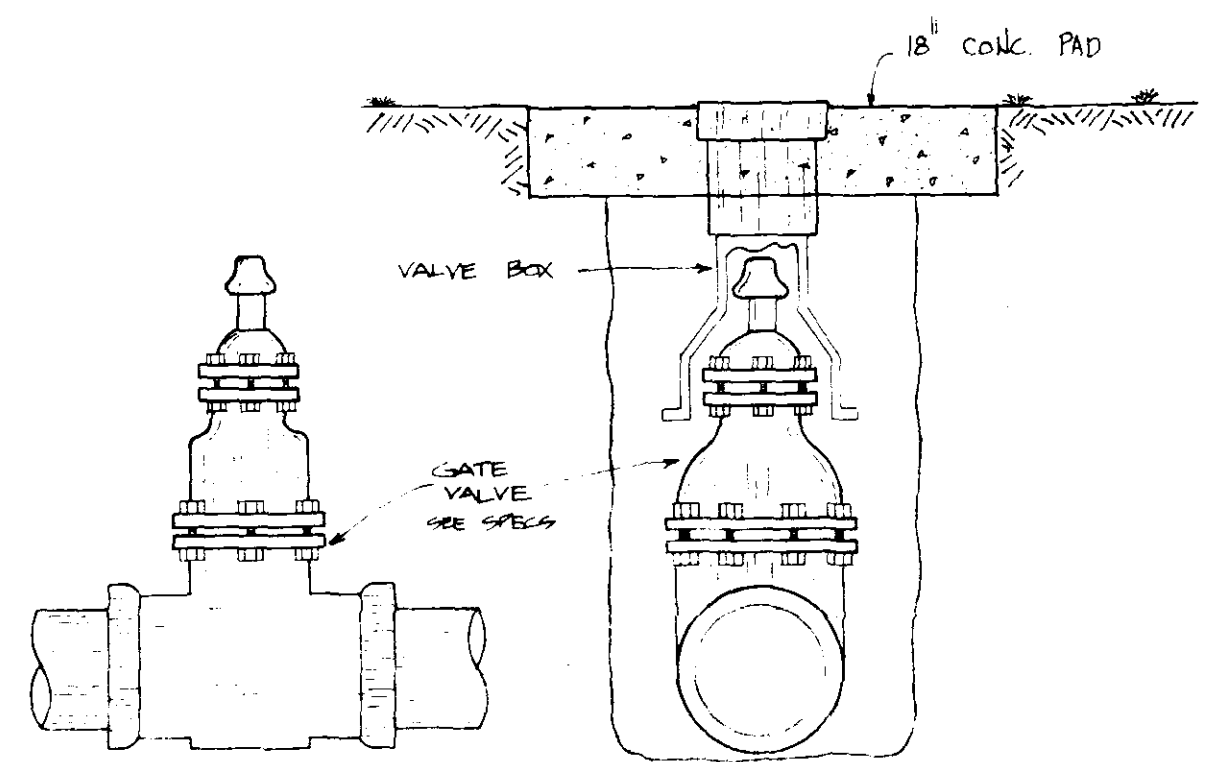
DOUBLE SERVICE DETAIL - WATER



DOUBLE SEWER SERVICE DETAIL



TYPICAL CREEK CROSSING



TYPICAL VALVE DETAIL

2	VALVE DETAIL, F.H. DETAIL	8-8-85
NO.	REVISIONS	BY DATE
STANDARD WATER DETAILS		
DESIGNED BY <u>K.P.L.</u> DRAWN BY <u>W.D.H.</u>		
SCALE: _____ CAT: <u>AWS-101</u>		