

THE CITY OF



RIDGELAND

RIDGELAND ENTRANCE SIGN AT LAKE HARBOR DRIVE RIDGELAND, MISSISSIPPI

MAYOR
ALDERMAN/WARD 1
ALDERMAN/WARD 2
ALDERMAN/WARD 3
ALDERMAN/WARD 4
ALDERMAN/WARD 5
ALDERMAN/WARD 6
ALDERMAN-AT-LARGE

GENE MCGEE
KEN HEARD
CHUCK GAUTIER
CAROLE A. DAVIS
LARRY ROBERTS
SCOTT JONES
LINDA DAVIS TRUNZLER
GERALD STEEN

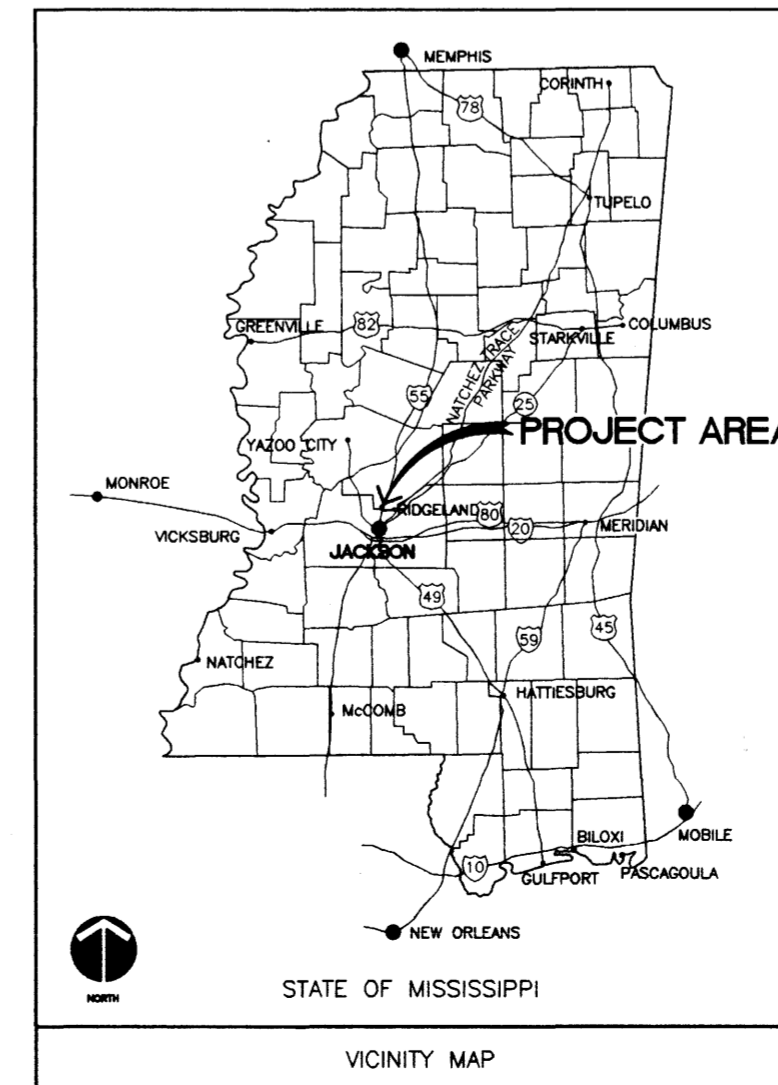
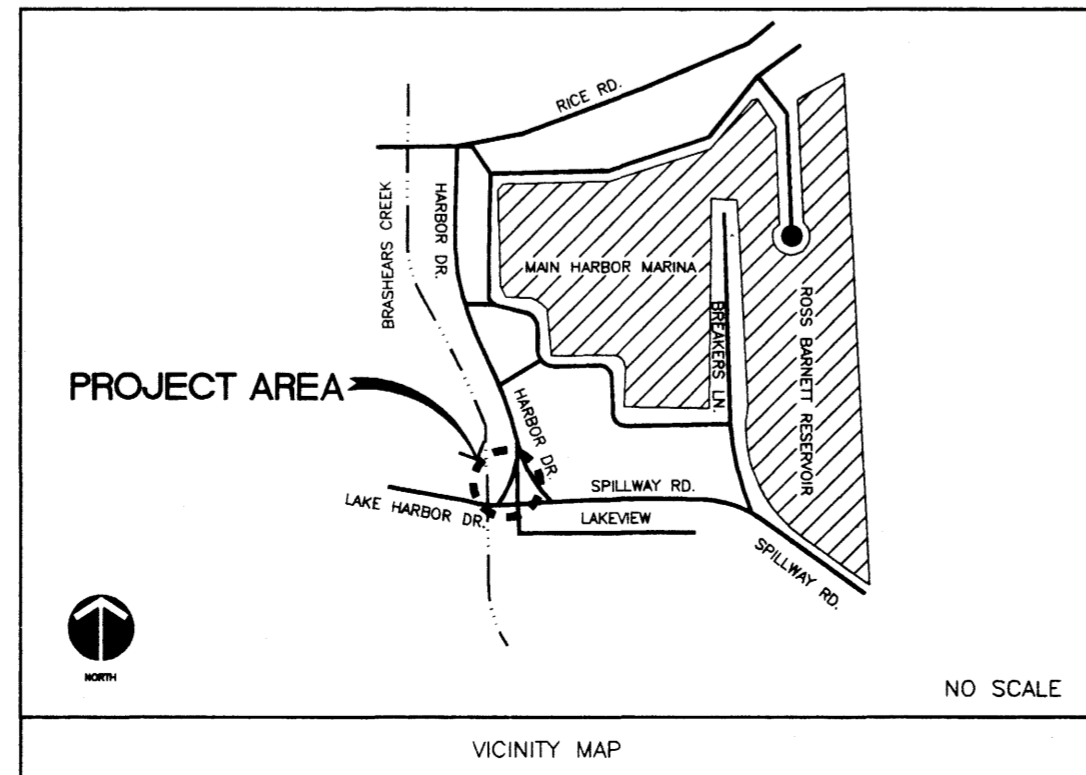


ASLA

**Weatherford
McDade, Ltd.**

Planning Consultants • Landscape Architects

1662 Lelia Drive, Jackson, Mississippi 39216 Telephone (601) 362-9707 FAX (601) 362-9774



INDEX TO DRAWINGS

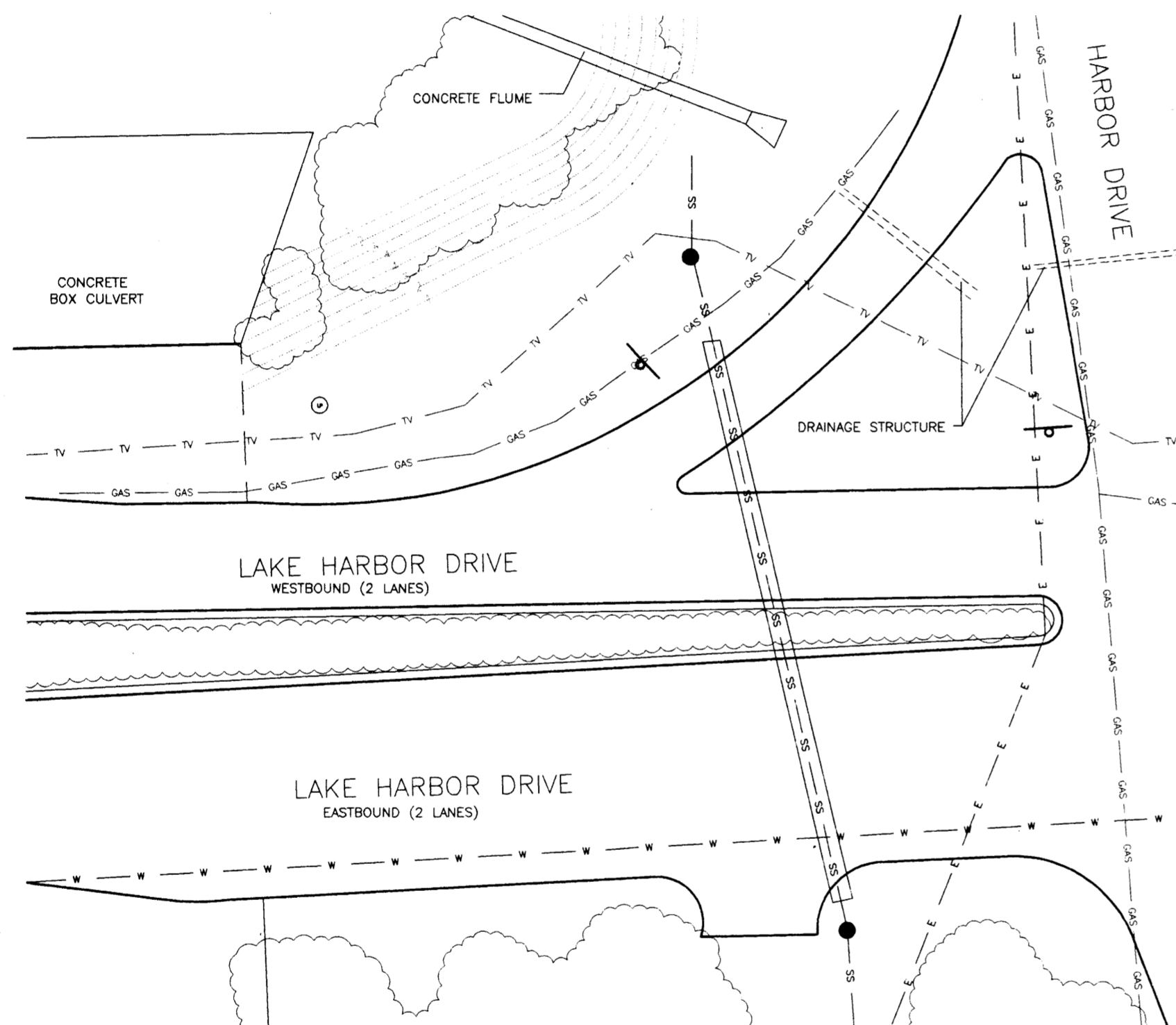
SHEET NO.	SHEET NAME	DRAWING NAME
1	X-1	EXISTING CONDITIONS/LAYOUT
2	LA-1	LANDSCAPE/IRRIGATION PLAN
3	G-1	GRADING PLAN
4	SD-1	CONSTRUCTION DETAILS

PROJECT NUMBER 00122-03

SET NUMBER

DATE 01/10/02

PWP-01840



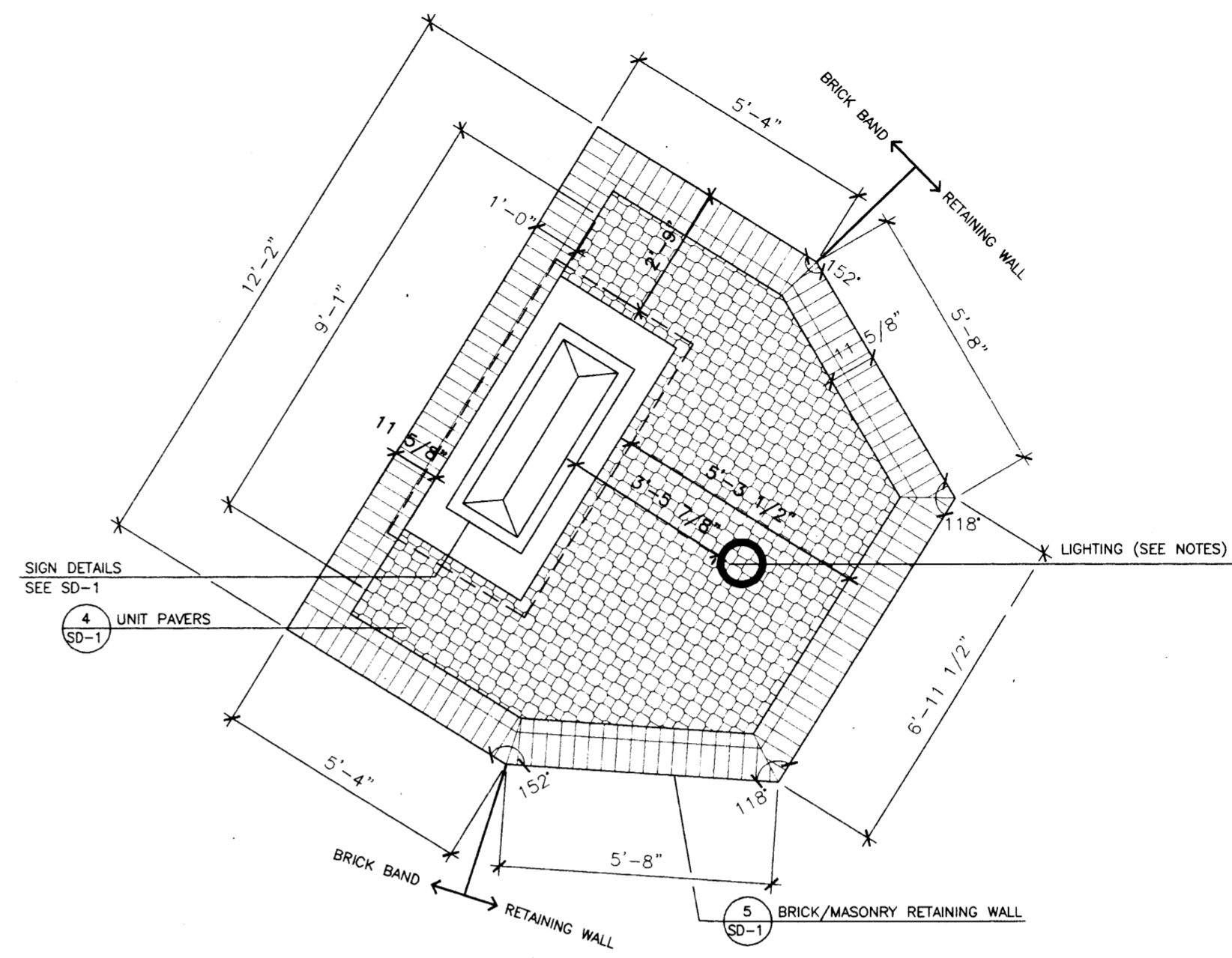
LEGEND:

- TV — CABLE TV LINE
- GAS — GAS LINE
- E — ELECTRIC LINE
- SS — SANITARY SEWER LINE
- W — WATER LINE
- ☁ EXISTING VEGETATION
- ⊕ LIGHT POLE

GENERAL NOTES- EXISTING CONDITIONS:

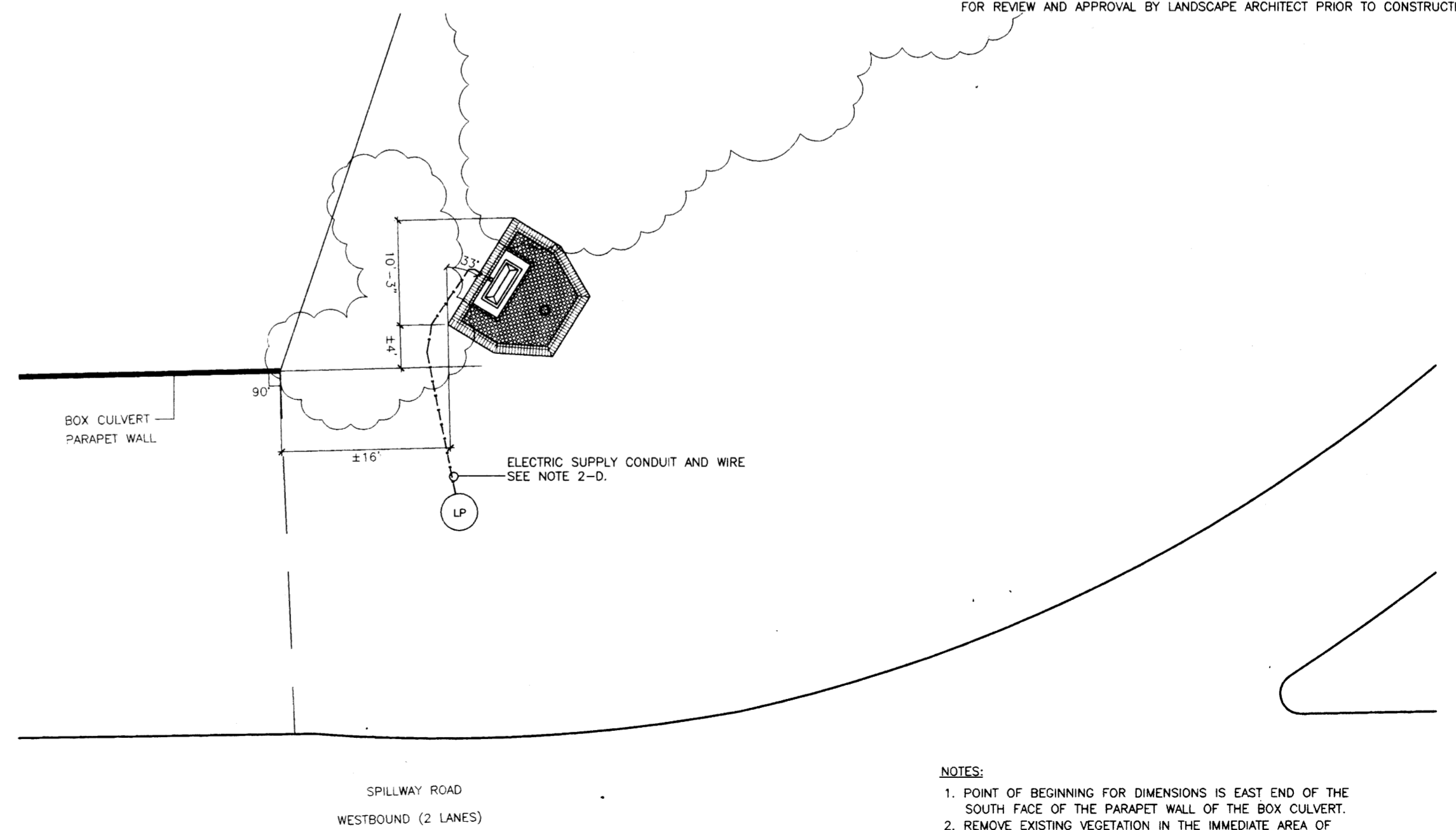
1. BASE INFORMATION PROVIDED BY OWNER WITH ADDITIONAL FIELD OBSERVATIONS BY LANDSCAPE ARCHITECT.
2. BASE MAP REPRODUCED FROM DATA USED BY WAGGONER ENGINEERING ON SPILLWAY ROAD IMPROVEMENTS PROJECT.

EXISTING CONDITIONS



GENERAL NOTES- LAYOUT:

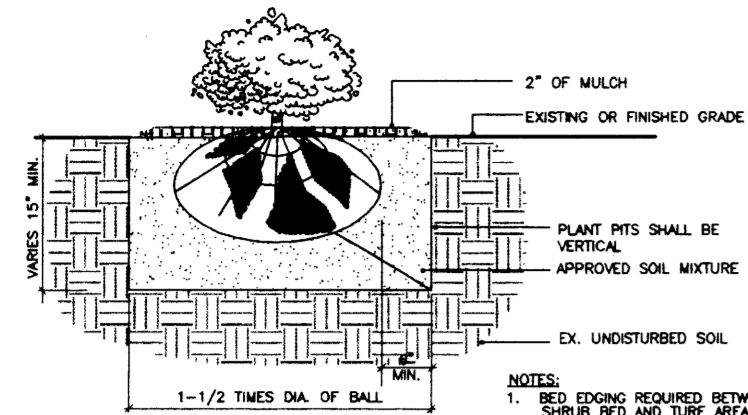
1. IF THE CONTRACTOR, IN THE COURSE OF THE WORK FINDS OR SUSPECTS ANY DISCREPANCY BETWEEN THE DRAWINGS AND THE PHYSICAL CONDITIONS OF THE SITE OR WORK OR ANY ERRORS OR OMISSIONS IN THE CONTRACT DOCUMENTS OR SPECIFICATIONS, HE SHALL IMMEDIATELY NOTIFY THE LANDSCAPE ARCHITECT AND THE LANDSCAPE ARCHITECT SHALL PROMPTLY VERIFY THE SAME. ANY WORK DONE AFTER SUCH DISCOVERY, UNLESS AUTHORIZED, SHALL BE DONE AT THE CONTRACTOR'S RISK.
2. SITE LIGHTING:
 - A. LIGHTS: KIM LIGHTING LAMP 5012, GROUT MASK 6202GM, AND ROCK GUARD 5088.
 - B. POWER PROVIDED BY OWNER.
 - C. METER BASE, GFI BREAKER(S), PHOTOCELL (TO OPERATE LIGHTS), AND WIRING INCLUDING POWER SUPPLY REQUIRED BY CONTRACTOR LOCATIONS APPROVED BY OWNER AND LANDSCAPE ARCHITECT.
 - D. CONTRACTOR TO PROVIDE WIRE FOR POWER SUPPLY, ENCASED IN CONDUIT, UNDERGROUND FROM METER BASE TO LIGHT POLE AS SHOWN. CONNECTION OF WIRE AND CONDUIT WILL BE BY ENTERGY.
3. UNIDECOR PAVER SHALL BE UNIDECOR PLAZA BLEND, SIZE 2'-3/8".
4. DEMOLITION:
 - A. GRUB/STRIP TOPSOIL IN CONSTRUCTION AREA.
 - B. CONTRACTOR SHALL STAKE OUT SIGN AND RETAINING WALL LOCATION FOR REVIEW AND APPROVAL BY LANDSCAPE ARCHITECT PRIOR TO CONSTRUCTION.



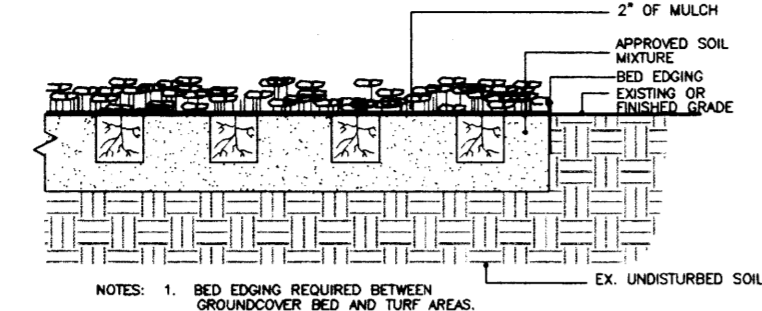
NOTES:

1. POINT OF BEGINNING FOR DIMENSIONS IS EAST END OF THE SOUTH FACE OF THE PARAPET WALL OF THE BOX CULVERT.
2. REMOVE EXISTING VEGETATION IN THE IMMEDIATE AREA OF NEW CONSTRUCTION.

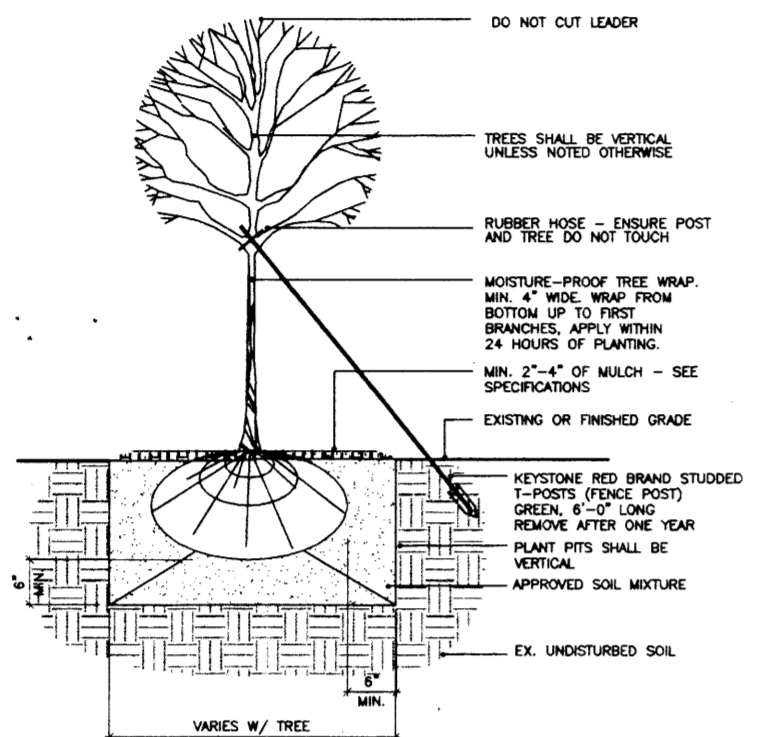
LAYOUT PLAN



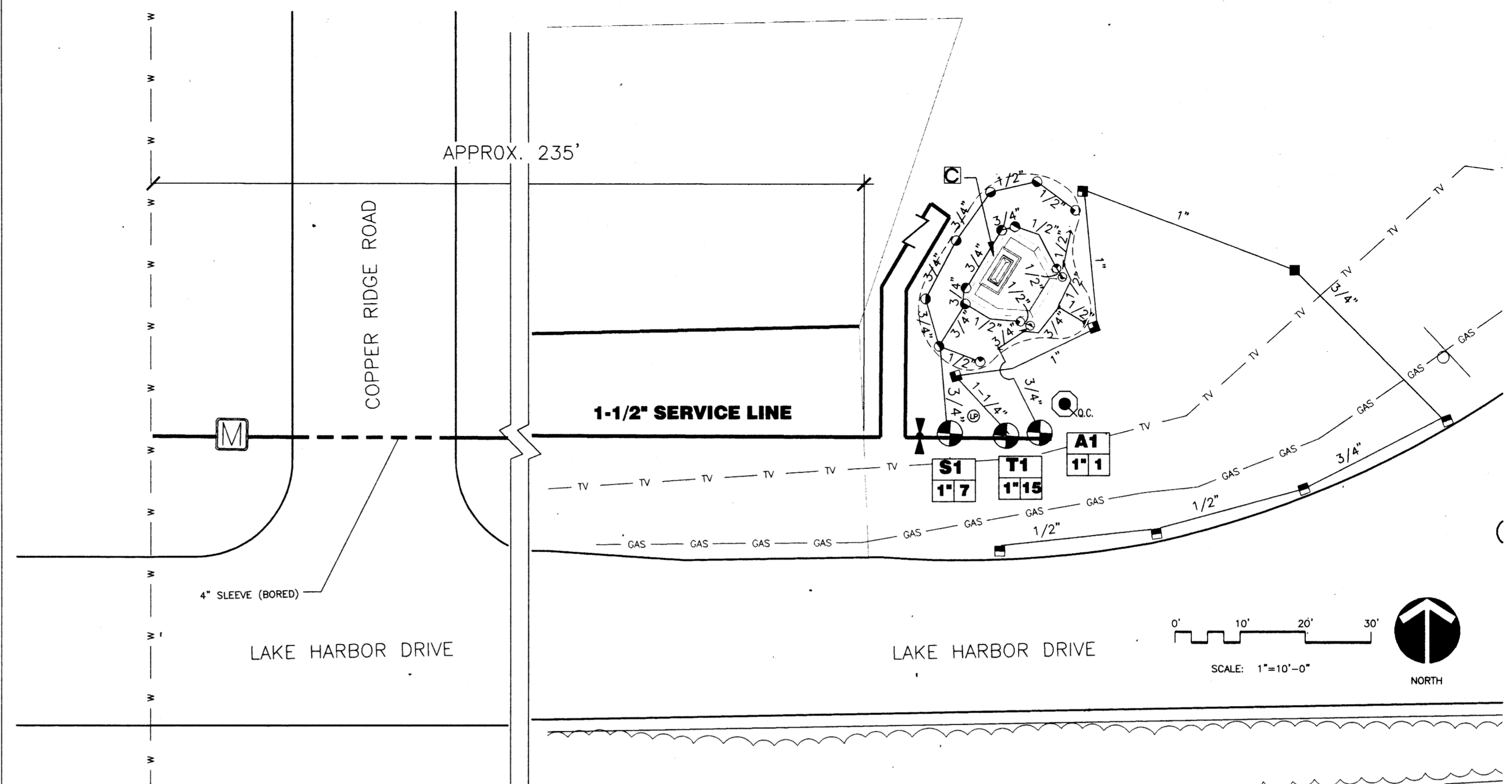
1 TYPICAL SHRUB PLANTING DETAIL
LA-1 NO SCALE



2 TYPICAL GROUNDCOVER PLANTING DETAIL
LA-1 NO SCALE



3 TYPICAL TREE PLANTING DETAIL 'A'
LA-1 NO SCALE



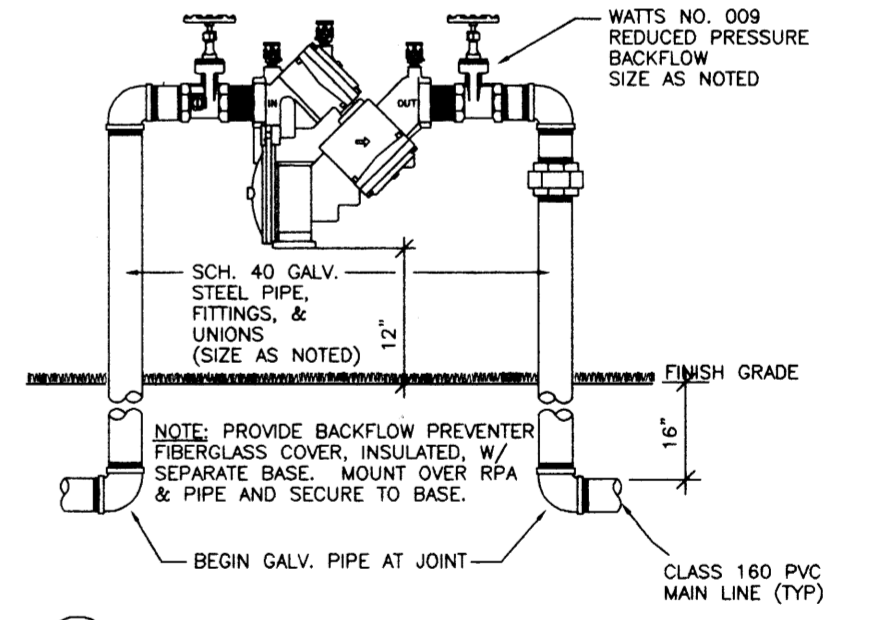
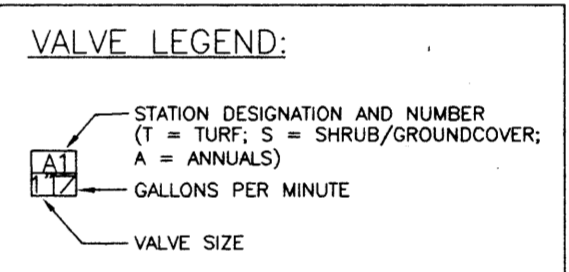
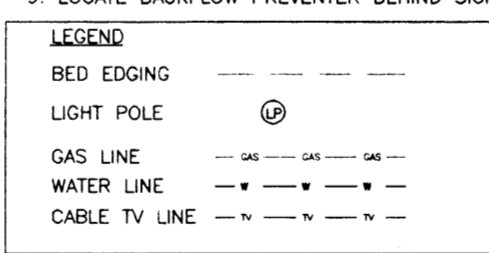
IRRIGATION SCHEDULE PRODUCTS BY RAINBIRD UNLESS NOTED OTHERWISE

SYM.	MODEL#	PSI	RADIUS	GPM	REMARKS
▲	1812-PRS-50	30	5'	.10	USE RISER DETAIL AS NECESSARY FOR SHRUB ZONES
▲	1812-PRS-5H	30	5'	.20	USE RISER DETAIL AS NECESSARY FOR SHRUB ZONES
●	1812-PRS-80	30	8'	.26	USE RISER DETAIL AS NECESSARY FOR SHRUB ZONES
●	1812-PRS-8H	30	8'	.52	USE RISER DETAIL AS NECESSARY FOR SHRUB ZONES
●	1812-PRS-15EST	30	4'x15'	.61	USE RISER DETAIL AS NECESSARY FOR SHRUB ZONES
■	3504-SAM-PC-1.5	45	24'	1.48	
■	3504-SAM-PC-2.0	45	27'	1.93	
■	3504-SAM-PC-3.0	45	31'	3.00	
M	1" METER				
⊗	100-PEB				1-1/2" MANUAL GLOBE VALVE W/ BOX (FOR USE AS ISOLATION)
⊗	ESP-4				1" ELECTRIC CONTROL VALVE
⊗	1" WATTS SERIES 009QT				4 STATION OUTDOOR IRRIGATION CONTROLLER W/ MINI-CLIC 2
⊗	QUICK COUPLER 44RC				REDUCED PRESSURE BACKFLOW PREVENTER Q.C. W/ 44 KEY AND SH-O HOSE SWIVEL

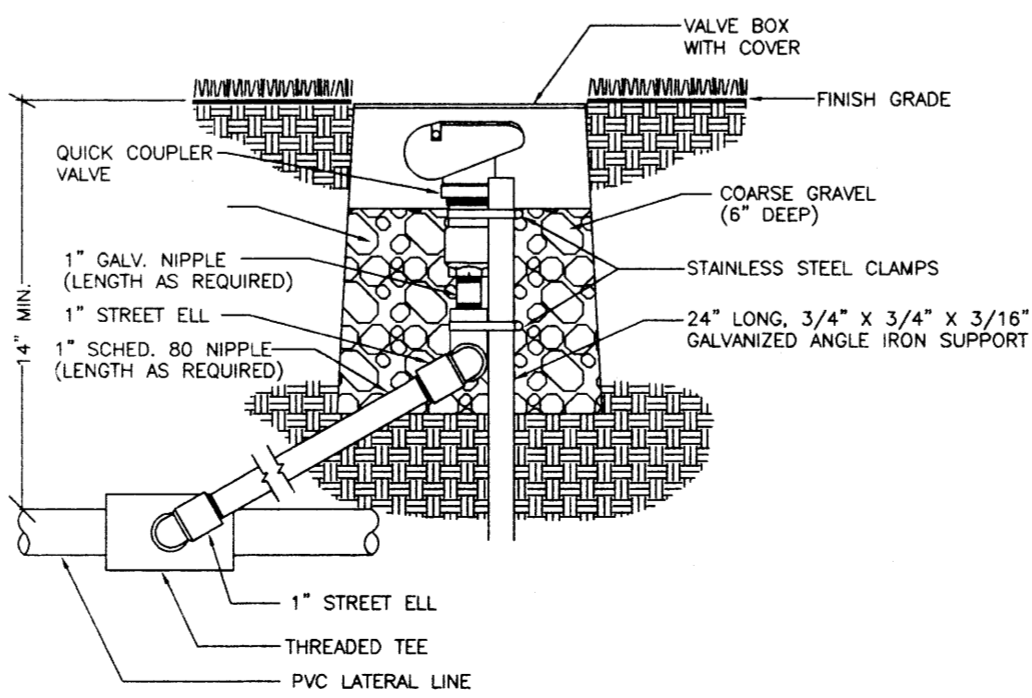
1. CONNECT QUICK COUPLER TO MAIN WITH A 1" LINE.

GENERAL IRRIGATION NOTES:

- THE IRRIGATION PLAN IS DIAGRAMMATIC IN NATURE. CONTRACTOR SHALL VERIFY EXISTING CONDITIONS AND REPORT VARIANCES TO THE ARCHITECT PRIOR TO INITIATION OF WORK.
- LAYOUT - REVIEW LAYOUT OF HEADS ON SITE WITH LANDSCAPE ARCHITECT PRIOR TO INSTALLATION.
- COORDINATE INSTALLATION OF IRRIGATION SYSTEM WITH PLANT MATERIAL INSTALLATION FOR MAXIMUM EFFICIENCY OF SYSTEM.
- LOCATE UP TO 2 ELECTRIC CONTROL VALVES WITHIN LOCKING VALVE BOXES AS SPECIFIED. PROVIDE A 6" DEEP LAYER OF GRAVEL WITHIN THE BOXES BELOW THE VALVES. CURL A 24" SECTION OF CONTROL WIRE AROUND A 1/2" DIA. PIPE (REMOVE PIPE) FOR LIGHTNING PROTECTION.
- CONTROLLER - MOUNT ON BACK OF SIGN AS DESIGNATED (SEE SPECS). GROUP ZONES AS INDICATED BY VALVE LEGEND ZONES SO THAT TURF IS ON ONE PROGRAM, SHRUBS ON ANOTHER. MOUNT CONTROLLER W/ SCREEN 5'-6" A.F.F. PROVIDE RIGID CONDUIT SECURED TO WALL FOR POWER SUPPLY, VALVE, AND GROUND WIRE. GROUND CONTROLLER WITH A 6" COPPER CLAD GROUND ROD.
- PROVIDE 1-1/2" MAIN FROM TAP UP TO EACH VALVE.
- REFER TO OTHER DRAWINGS FOR LOCATIONS OF EXISTING AND NEW UTILITIES.
- TAP AND METER PROVIDED BY CITY. CONTRACTOR TO COORDINATE WITH PUBLIC WORKS DEPARTMENT.
- LOCATE BACKFLOW PREVENTER BEHIND SIGN AS APPROVED BY LANDSCAPE ARCHITECT.

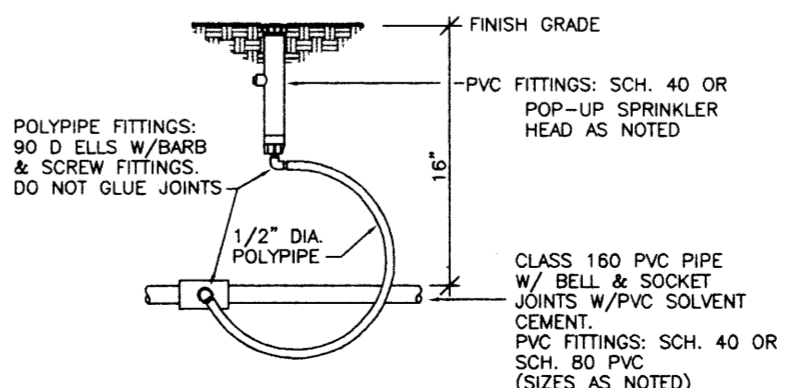


6 REDUCED PRESSURE BACKFLOW PREVENTER
LA-1 NO SCALE

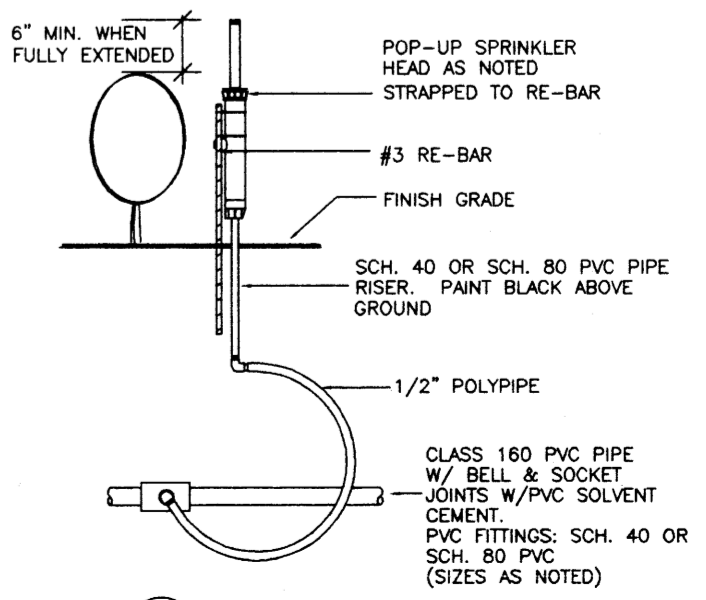


4 QUICK COUPLER VALVE
LA-1 NO SCALE

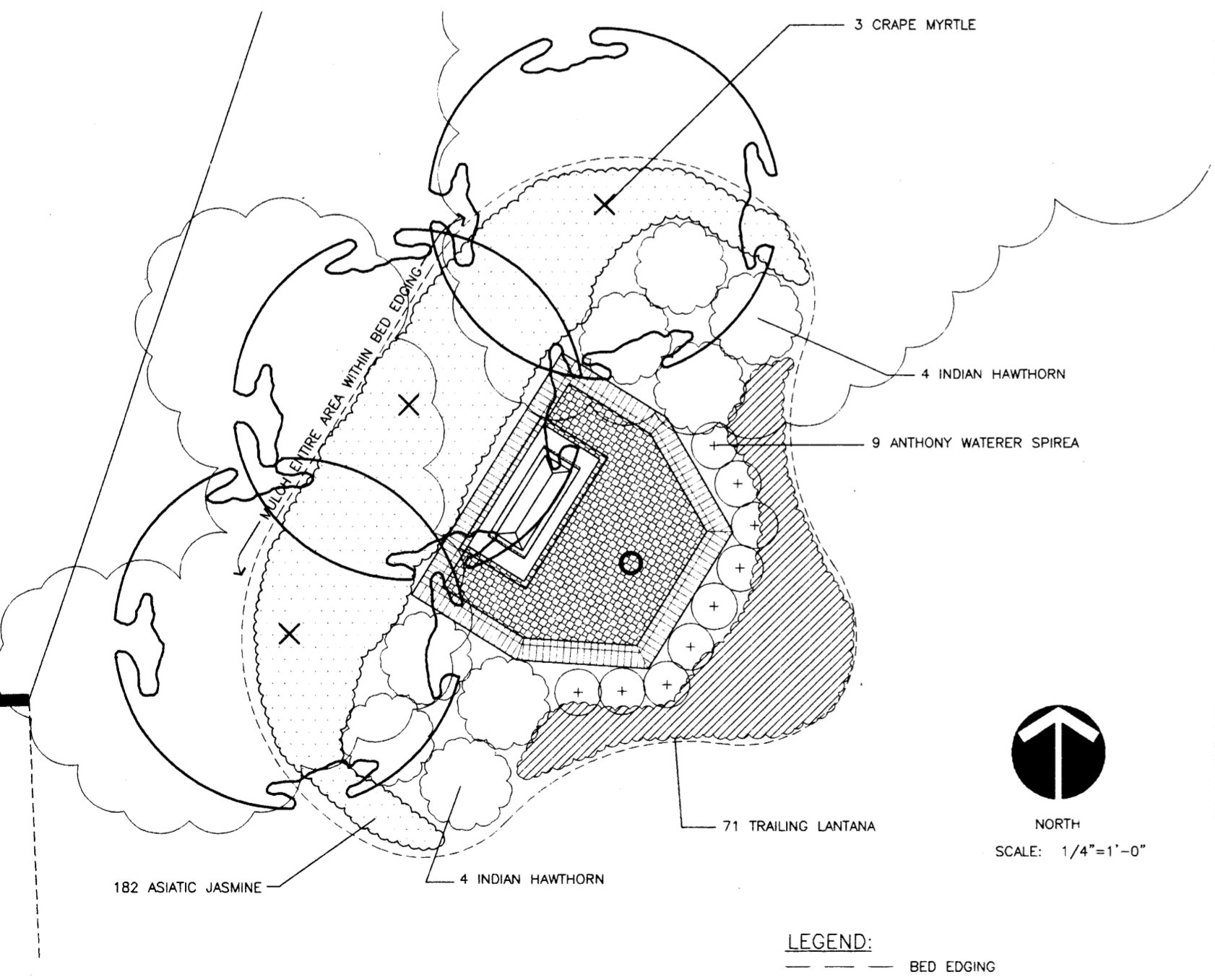
NOTE: USE THIS DETAIL WITHIN SHRUB BEDS TO MAINTAIN SYSTEM EFFICIENCY. DO NOT USE ADJACENT TO WALKS OR PAVING, OR IN LOCATIONS IN FRONT OF BUILDING WINDOWS. DO NOT USE ON SHRUBS GREATER THAN 3' HIGH.



5 TYPICAL HEAD DETAIL
LA-1 NO SCALE



7 TYPICAL RISER DETAIL
LA-1 NO SCALE



PLANT SUMMARY

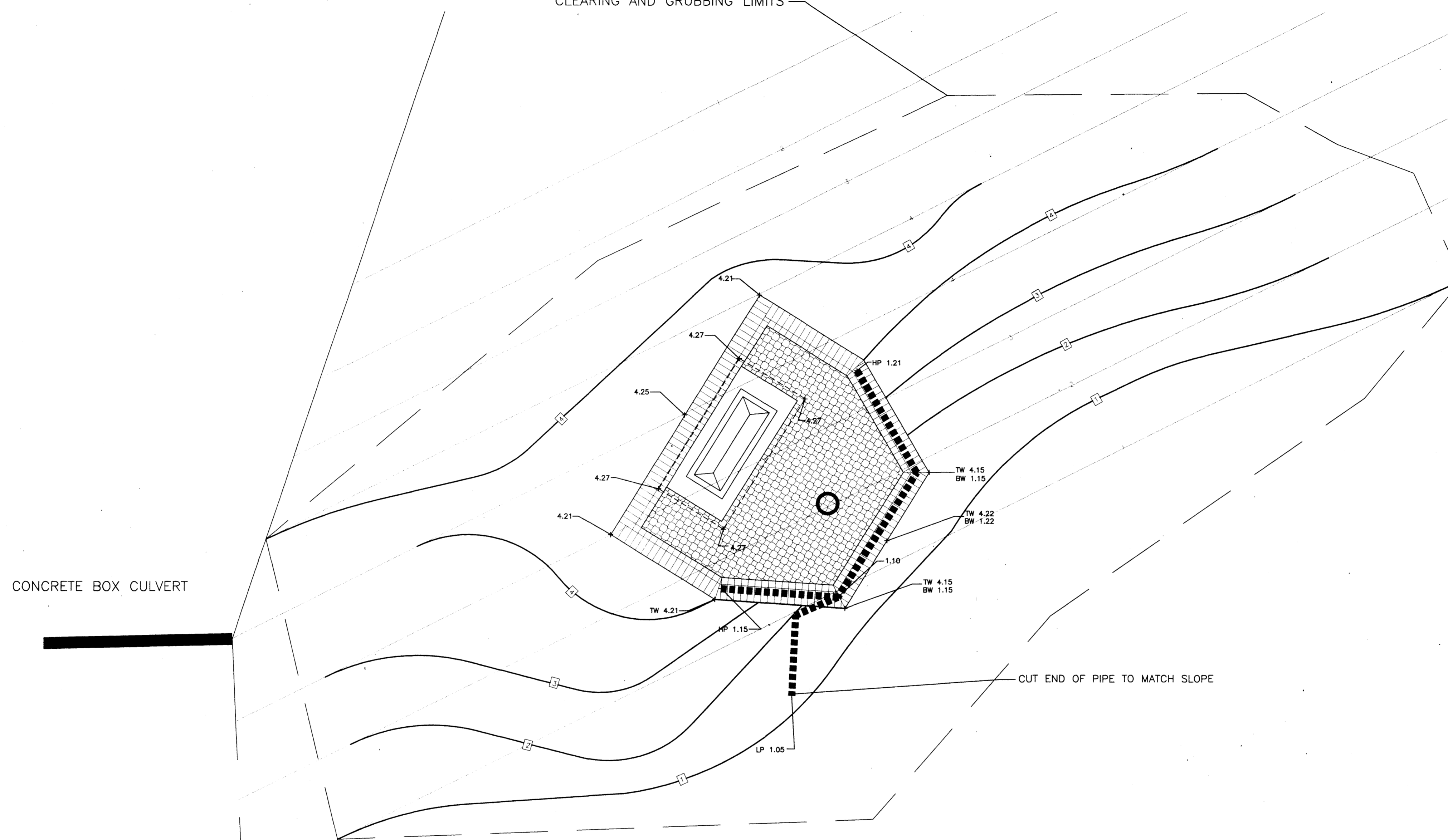
SCIENTIFIC NAME	COMMON NAME	SIZE	HGT	CAL	REMARKS
LAGERSTROMIA INDICA 'WATERMELON RED'	RED CRAPE MYRTLE	BB	6'-8"	1 1/2"	MIN. 3 CARES
SPIRAEA X BUMALDA	ANTHONY WATERER SPIREA	3 GAL.			
RAPHIOLEPIS INDICA 'BALLERINA'	INDIAN HAWTHORN	3 GAL.			
LANTANA MONTEVIDENSIS	TRAILING LANTANA	1 GAL.		12" O.C.	
TRACHELOSPERMUM ASIATICUM	ASIATIC JASMINE	4" POTS		12" O.C.	
CYNODON DACTYLON	COMMON BERMUDA GRASS	SOD			DISTURBED AREAS ONLY

PLANT SUMMARY NOTES:
1. TREES SHALL BE BAILED AND BURLAPPED
2. ITEMS DESIGNATED BY "GAL" OR "POTS" SHALL BE CONTAINER GROWN
3. FOR TREES, HEIGHT SHOWN PRECEDES CALIPER. HOWEVER, MINIMUM CALIPER SHALL BE IN ACCORDANCE WITH AAN STANDARDS.

GENERAL LANDSCAPE NOTES:
1. SHRUBS AND GROUNDCOVER BOUNDED BY STRUCTURES, PAVING, AND BED EDGING-BED PREPARATION REQUIRED.

CONCRETE BOX CULVERT

CLEARING AND GRUBBING LIMITS



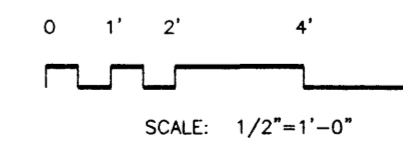
LEGEND

- + HP 1.78 HIGH POINT OF PIPE
- + TW 4.97
BW 1.25 TOP/BOTTOM OF WALL
- + LP 1.05 LOW POINT OF PIPE
- PROPOSED CONTOUR
- EXISTING CONTOUR
- - - - - LIMITS OF CLEARING AND GRUBBING
- 4" PLANTER DRAIN PIPE

NOTES:

1. SEE SHEET X-1 FOR INFORMATION REGARDING BASE MAP.
2. FOR THIS PROJECT, THE HIGH POINT OF THE EMBANKMENT AT THE LOCATION OF THE SIGN IS ASSUMED TO BE 4 FEET.
3. PROPOSED ELEVATIONS ARE RELATIVE TO THE ELEVATION OF THE TOP OF THE EMBANKMENT AT THE LOCATION OF THE SIGN. REVIEW GRADING WITH LANDSCAPE ARCHITECT WHEN REVIEWING LAYOUT.

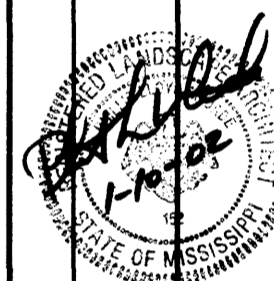
GRADING PLAN



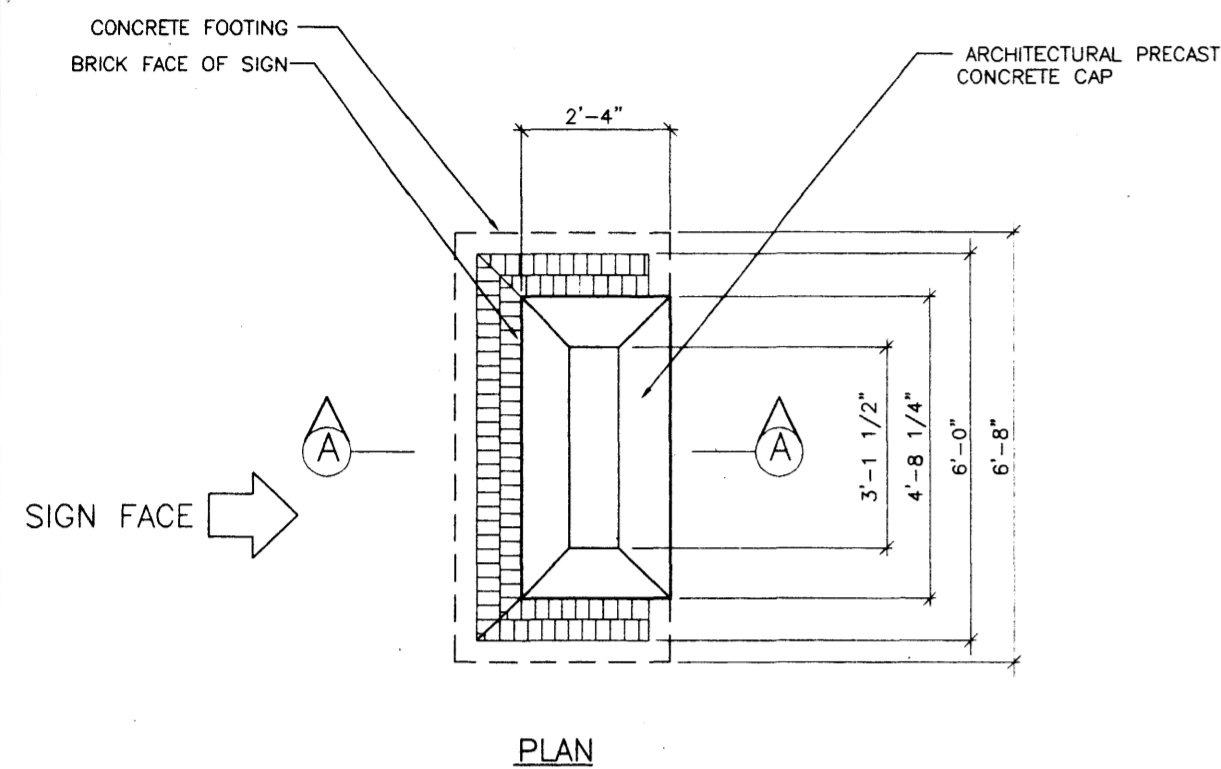
• RIDGELAND ENTRANCE SIGN AT LAKE HARBOR DRIVE

- CITY OF RIDGELAND
- RIDGELAND, MISSISSIPPI
- GRADING PLAN

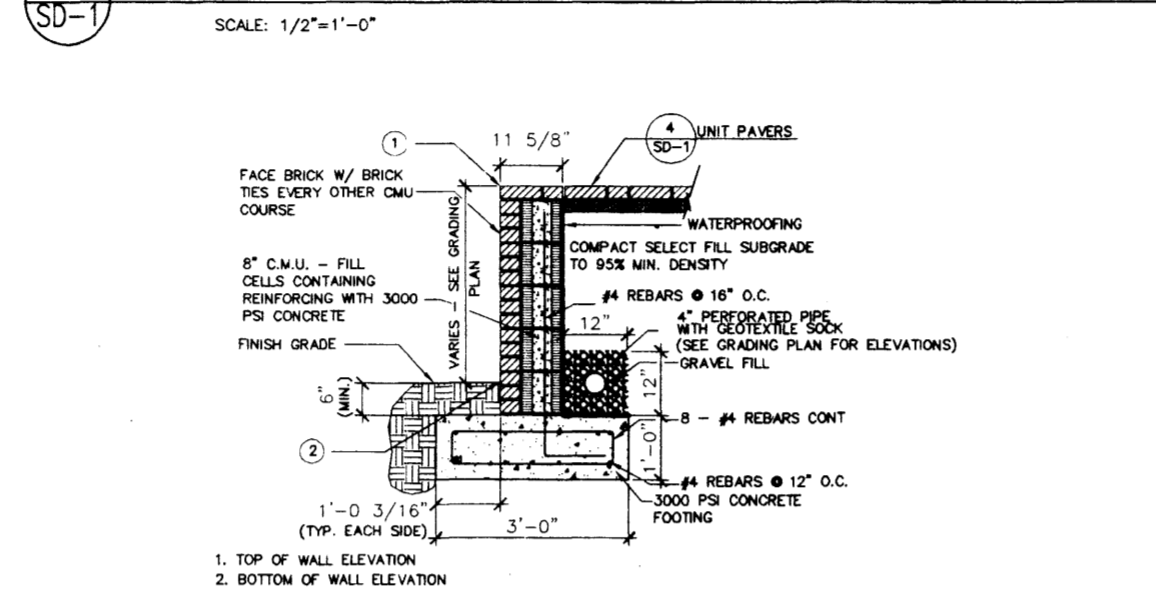
Scale 1/2" = 1'-0"
 Date 1/10/02
 Drawn by WM
 Checked by WM
 Revised
 P.N. 00122-03
 Drawing Number 0-1
 Sheet 3
 of 4



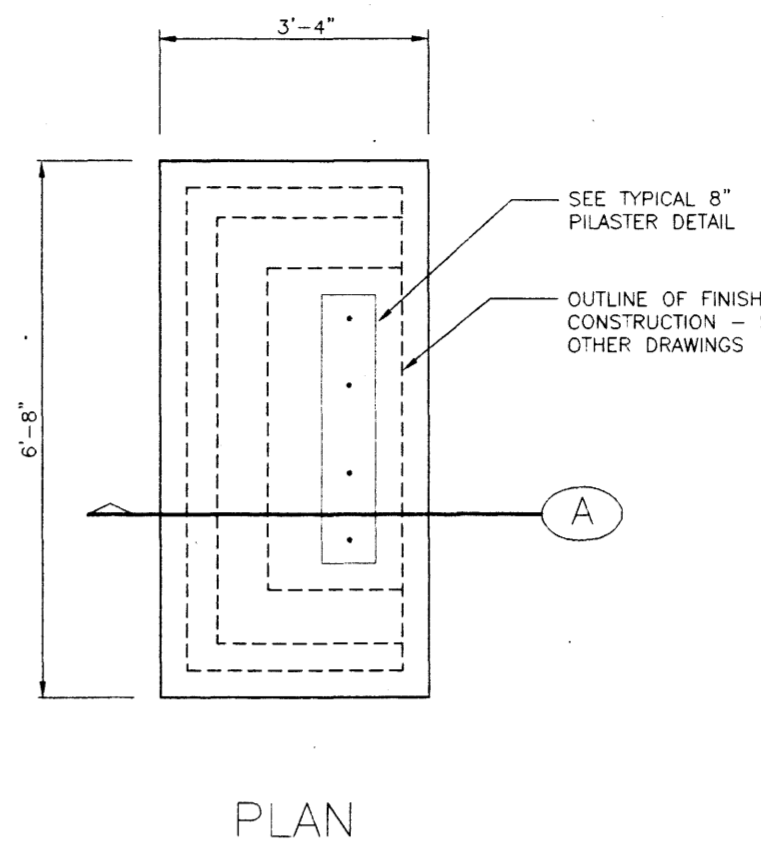
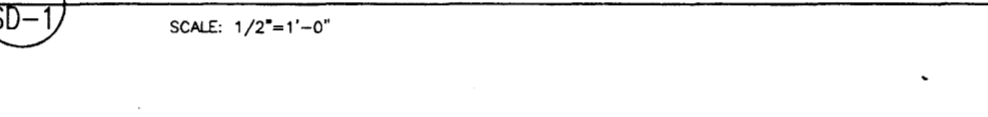
**Mcatherford
McDade, Ltd.**
 Planning Consultants • Landscape Architects
 1862 Lake Drive, Jackson, Mississippi 39216



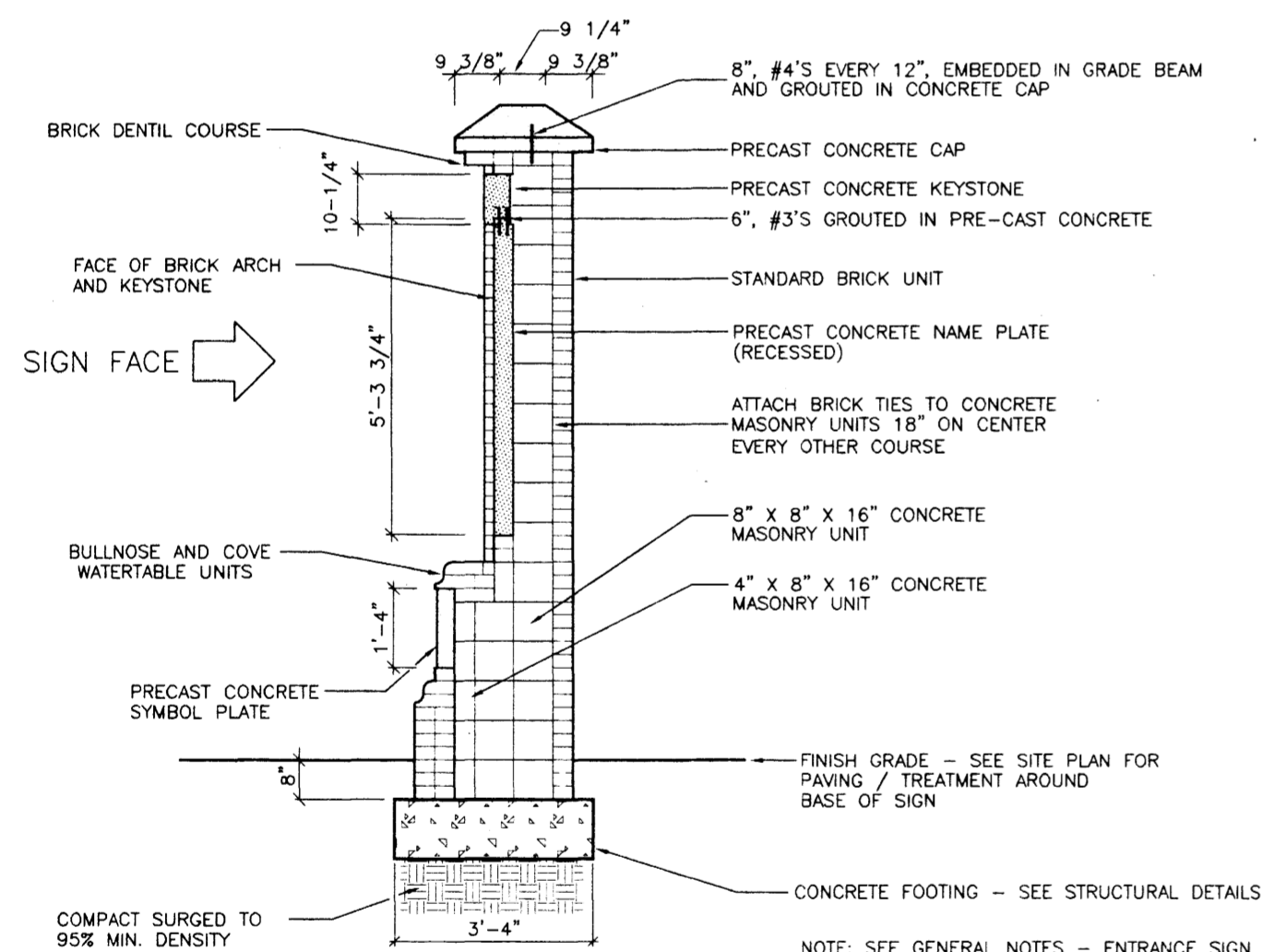
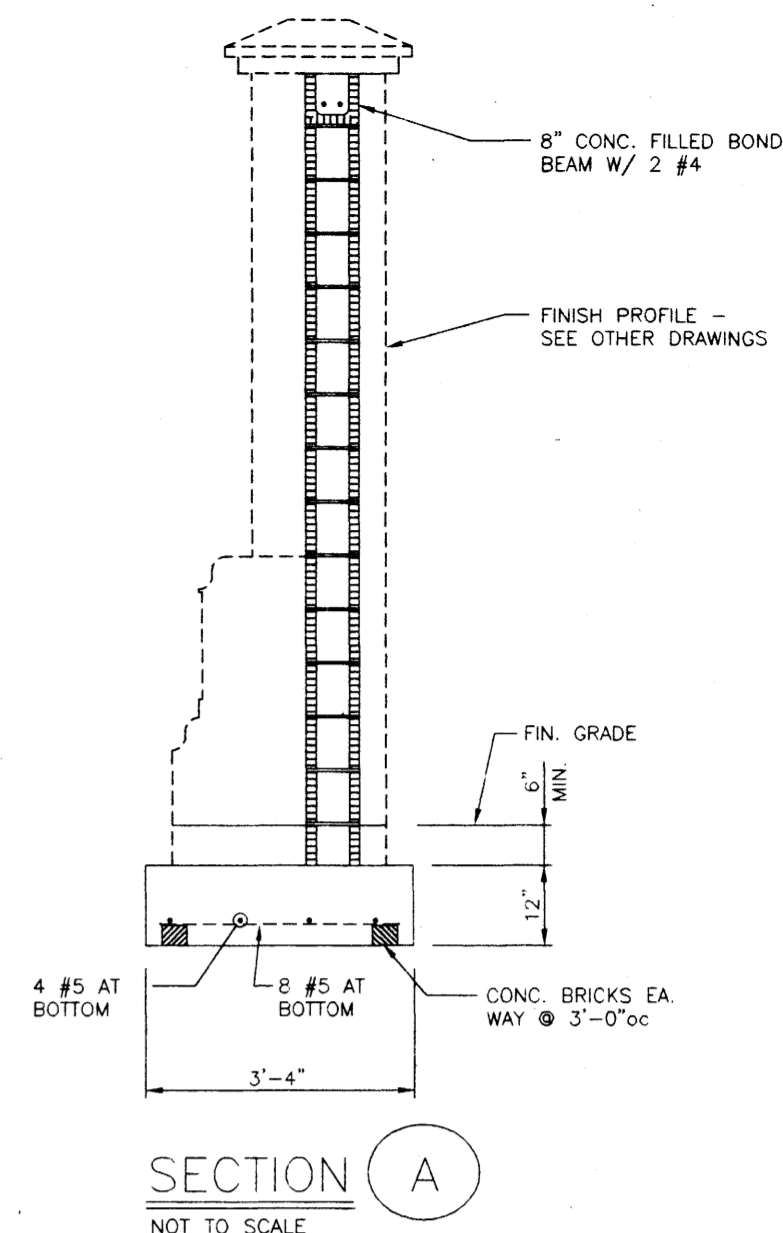
4 UNIT PAVERS DETAIL



5 BRICK/MASONRY RETAINING WALL

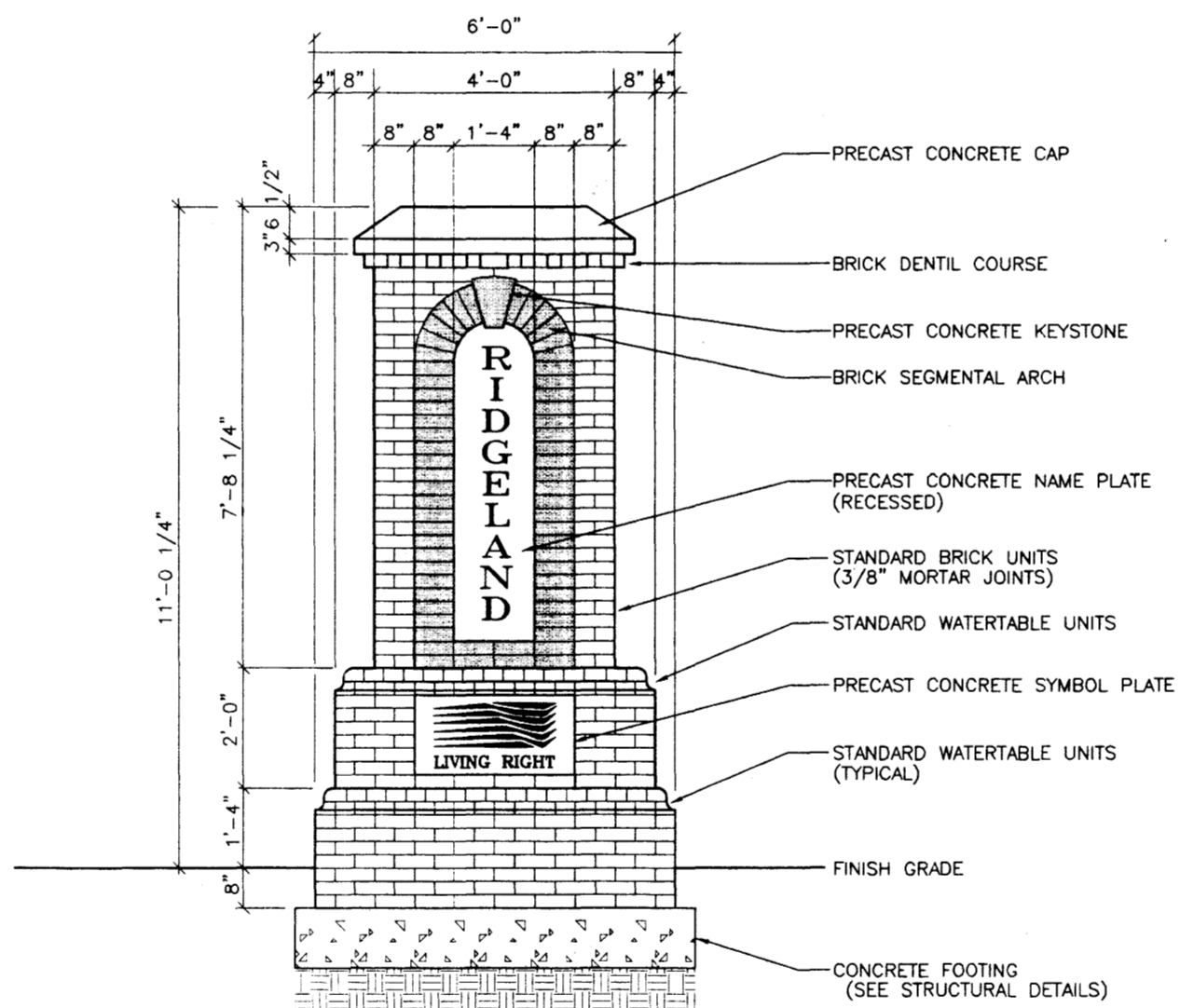


PLAN



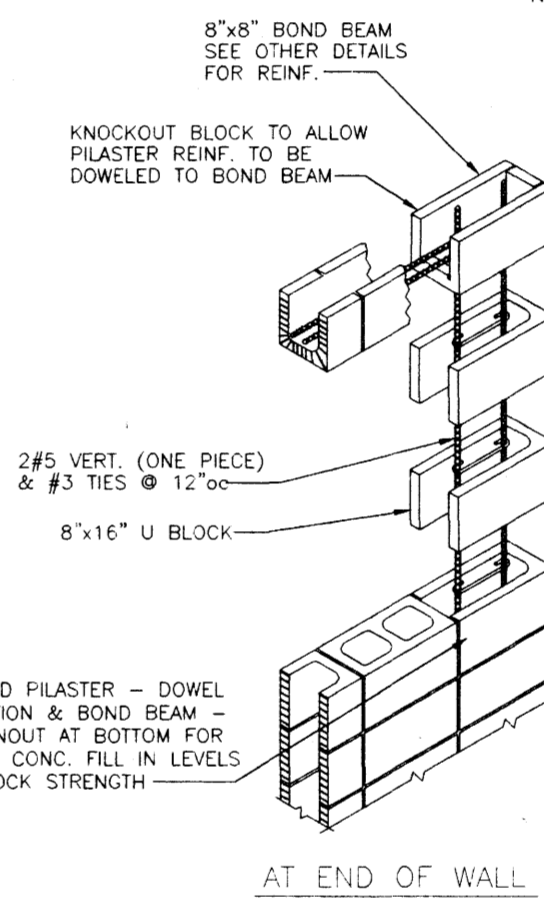
1 SIGN SECTION 'A-A'

SCALE: 1/2"=1'-0"



2 TYPICAL SIGN FACE ELEVATION

SCALE: 1/2"=1'-0"



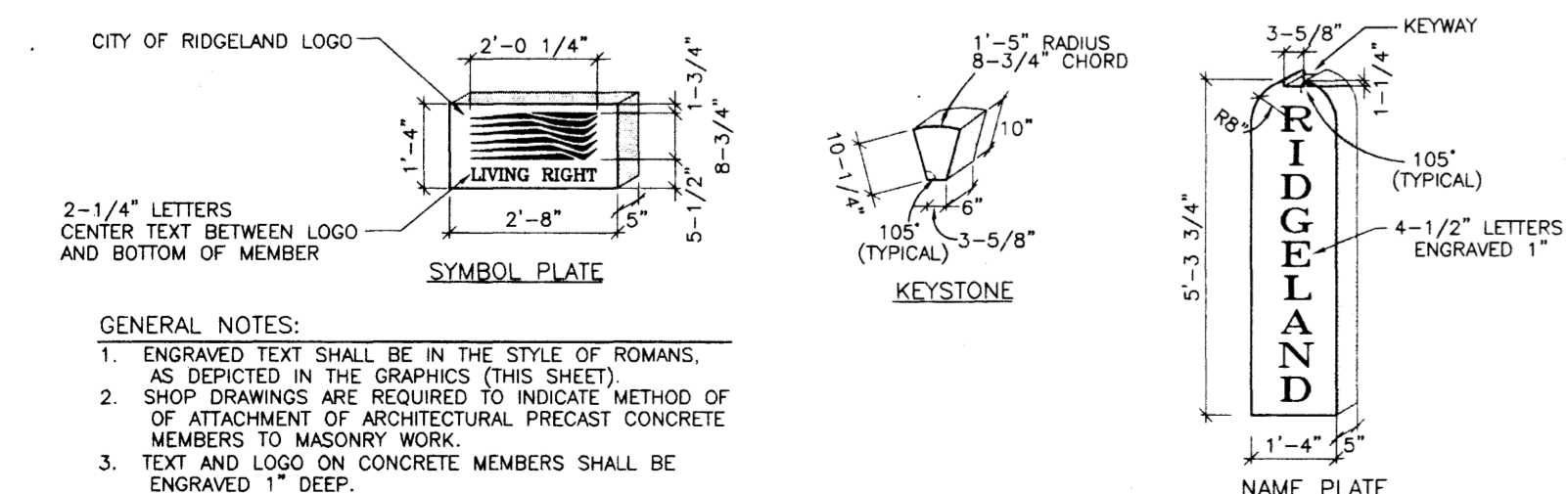
TYPICAL 8" PILASTER
NO SCALE

GENERAL NOTES:

- CONCRETE SHALL CONTAIN FROM 4 TO 5% AIR AND SHALL CONFORM TO LATEST A.C.I. SPECIFICATIONS AND HAVE A MINIMUM 28 DAY COMPRESSIVE STRENGTH OF 3000 p.s.i.
- REINFORCING STEEL SHALL BE A.S.T.M. A615 GRADE 40 FOR #3 AND #4 TIES; GRADE 60 OTHERWISE.
- PROVIDE NECESSARY REINFORCING STEEL ACCESSORIES TO HOLD STEEL IN PROPER POSITION.
- REINFORCING IN MEMBERS IN CONTACT WITH EARTH SHALL HAVE A MINIMUM OF 2 INCHES OF CONCRETE COVER.
- FILL AND BACKFILL SHALL BE SELECTED MATERIAL COMPACTED TO WITHIN 95% OF THE STANDARD PROCTOR DENSITY AT OPTIMUM MOISTURE CONTENT.

SPECIAL FOUNDATION NOTE:

- NO GEOTECHNICAL INFORMATION WAS FURNISHED FOR THIS PROJECT, BUT BASED ON GENERAL KNOWLEDGE OF THE AREA AND ITS SOIL CONDITIONS, IT IS ANTICIPATED THAT THE UNDERLYING SOILS ARE EXPANSIVE CLAYS. BASED ON THIS ASSUMPTION, CERTAIN TILTING, MOVEMENTS, AND DISLOCATION OF THIS ENTRANCE SIGN UNIT CAN BE EXPECTED AT SOME POINT IN TIME. IT IS NOT ANTICIPATED THAT THE SOIL MOVEMENTS WILL CAUSE ANY SIGNIFICANT DAMAGE OF THE CONSTRUCTION WITHIN THE ENTRANCE SIGN UNIT ITSELF.
- BY USING THESE PLANS, THE OWNER HOLDS HARMLESS THE DESIGNER FROM LIABILITY AND DAMAGE ARISING FROM THE UNSTABLE SOIL CONDITIONS OR FROM CONDITIONS WHERE FACTORS CAUSE THE SOIL CONDITIONS TO BECOME UNSTABLE AND ALLOW MOVEMENT AT OR UNDER THE FOUNDATION. IF CONDITIONS ARE FOUND TO BE OTHER THAN HEREIN STATED, STOP OPERATIONS AND NOTIFY THE LANDSCAPE ARCHITECT SO THAT HE CAN HAVE THE NECESSARY MEASURES TAKEN.



GENERAL NOTES:

- ENGRAVED TEXT SHALL BE IN THE STYLE OF ROMANS, AS DEPICTED IN THE GRAPHICS (THIS SHEET).
- SHOP DRAWINGS ARE REQUIRED TO INDICATE METHOD OF ATTACHMENT OF ARCHITECTURAL PRECAST CONCRETE MEMBERS TO MASONRY WORK.
- TEXT AND LOGO ON CONCRETE MEMBERS SHALL BE ENGRAVED 1" DEEP.

3 PRECAST CONCRETE MEMBERS

SCALE: 1/2"=1'-0"

GENERAL NOTES - ENTRANCE SIGNS:

- IF THE CONTRACTOR, IN THE COURSE OF THE WORK, FINDS OR SUSPECTS ANY DISCREPANCY BETWEEN THE DRAWINGS AND THE PHYSICAL CONDITIONS OF THE SITE OR WORK OR ANY ERRORS OR OMISSIONS IN THE CONTRACT DRAWINGS OR SPECIFICATIONS, HE SHALL IMMEDIATELY NOTIFY THE LANDSCAPE ARCHITECT AND THE LANDSCAPE ARCHITECT SHALL PROMPTLY VERIFY THE SAME. ANY WORK DONE AFTER SUCH DISCOVERY, UNLESS AUTHORIZED, SHALL BE DONE AT THE CONTRACTOR'S RISK.
- THIS DRAWING INDICATES TYPICAL CONSTRUCTION DETAILS FOR THE ENTRANCE SIGN. REFER TO SITE PLAN FOR THE LOCATION, AND SITE DETAILS AND TREATMENTS AROUND THE SIGN.
- BRICK AND DETAIL PIECES SHALL BE "ALEXANDRIA" AS MANUFACTURED BY BICKERSTAFF CLAY PRODUCTS COMPANY, INC., ATLANTA, GA., OR APPROVED EQUAL. FACE BRICK MAY BE UTILIZED WHERE HOLES ARE NOT EXPOSED TO SIGHT. OTHERWISE, SOLID UNITS ARE REQUIRED.
- BRICK TIES SHALL BE 16 GAUGE, 3 1/2" X 1" DOVETAIL ANCHORS.
- MORTAR SHALL BE TYPE "N". NON-COLORED MORTAR MAY BE UTILIZED ON CMU CONSTRUCTION, HOWEVER, SIGHT EXPOSED MORTAR SHALL BE COLORED.
- JOINTS: CMU JOINTS SHALL BE FLUSH CUT. EXPOSED BRICK AND PRECAST CONCRETE JOINTS SHALL BE RAKED.
- PRECAST CONCRETE UNITS SHALL BE HONED FINISH, LIGHTLY TEXTURED, APPROXIMATING FINISH OF LIMESTONE, WITH COLOR AS SELECTED BY THE OWNER AND THE LANDSCAPE ARCHITECT.

6 STRUCTURAL DETAILS

SCALE: 1/2"=1'-0"

RIDGELAND ENTRANCE SIGN AT LAKE HARBOR DRIVE

CITY OF RIDGELAND
RIDGELAND, MISSISSIPPI

SIGN SECTIONS AND DETAILS

Scale	AS SHOWN
Date	01/10/02
Drawn by	WM
Checked by	WM
Revised	
P.N.	00122-03
Drawing Number	SD-1
Sheet	4
of	4



Weatherford
McDade, Ltd.
Planning Consultants • Landscape Architects

1682 Leds Drive, Jackson, Mississippi 39216
Telephone (601) 362-9707 FAX (601) 362-8774