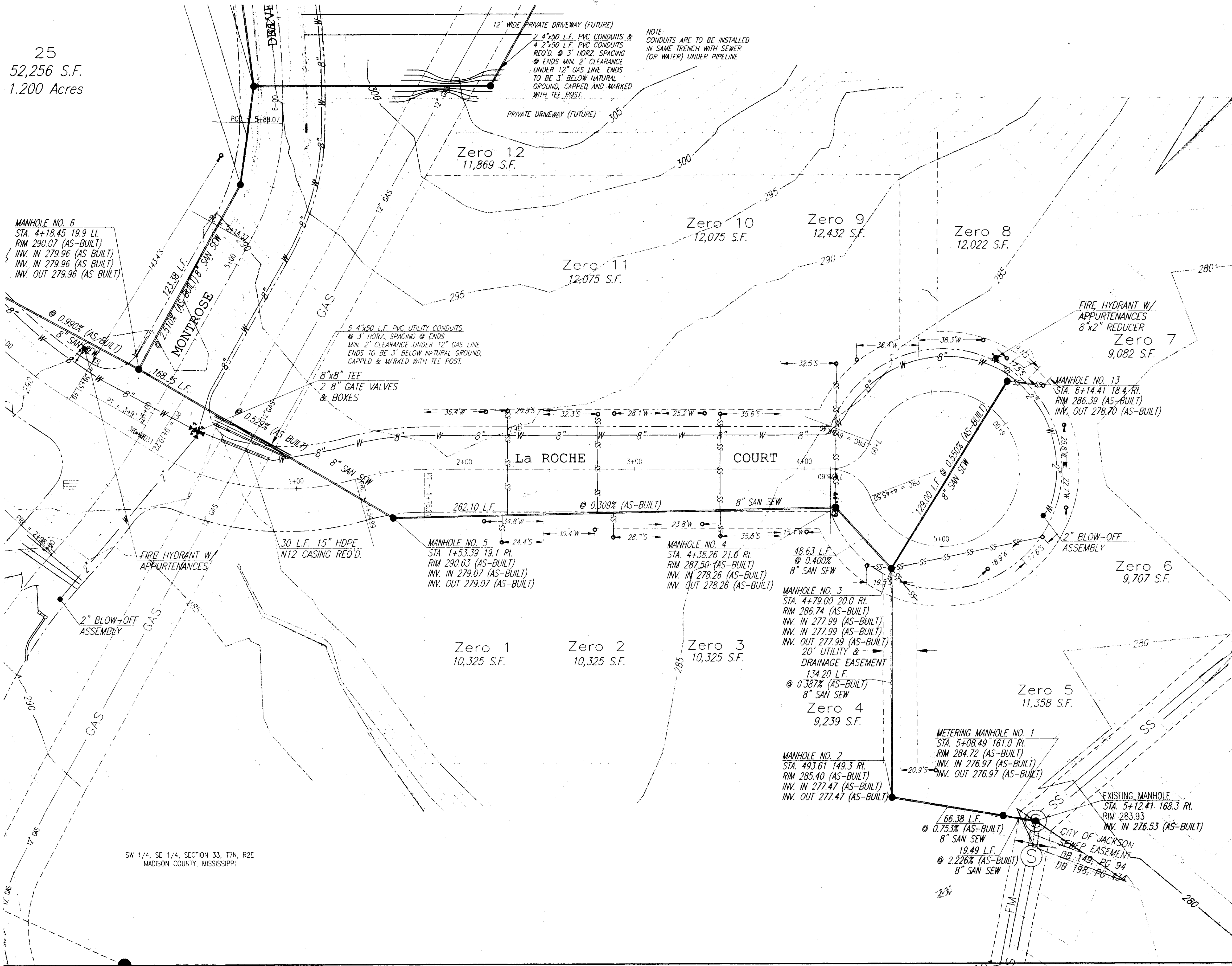


25
52,256 S.F.
1,200 Acres



MANHOLE NO. 6
STA. 4+18.45 19.9 RL
RIM 290.07 (AS-BUILT)
INV. IN 279.96 (AS-BUILT)
INV. OUT 279.96 (AS-BUILT)

MANHOLE NO. 13
STA. 6+14.41 18.4 RL
RIM 286.39 (AS-BUILT)
INV. OUT 278.70 (AS-BUILT)

MANHOLE NO. 5
STA. 1+53.39 19.1 RL
RIM 290.63 (AS-BUILT)
INV. IN 279.07 (AS-BUILT)
INV. OUT 279.07 (AS-BUILT)

MANHOLE NO. 4
STA. 4+38.26 21.0 RL
RIM 287.50 (AS-BUILT)
INV. IN 278.26 (AS-BUILT)
INV. OUT 278.26 (AS-BUILT)

MANHOLE NO. 3
STA. 4+79.00 20.0 RL
RIM 286.74 (AS-BUILT)
INV. IN 277.99 (AS-BUILT)
INV. IN 277.99 (AS-BUILT)
INV. OUT 277.99 (AS-BUILT)
20' UTILITY & DRAINAGE EASEMENT
134.20 L.F.
@ 0.387% (AS-BUILT)
8" SAN SEW

MANHOLE NO. 2
STA. 493.61 149.3 RL
RIM 285.40 (AS-BUILT)
INV. IN 277.47 (AS-BUILT)
INV. OUT 277.47 (AS-BUILT)

METERING MANHOLE NO. 1
STA. 5+08.49 161.0 RL
RIM 284.72 (AS-BUILT)
INV. IN 276.97 (AS-BUILT)
INV. OUT 276.97 (AS-BUILT)

EXISTING MANHOLE
STA. 5+12.47 168.3 RL
RIM 283.93
INV. IN 276.53 (AS-BUILT)

NOTE:
CONDUITS ARE TO BE INSTALLED
IN SAME TRENCH WITH SEWER
(OR WATER) UNDER PIPELINE

5.4"x50 L.F. PVC UTILITY CONDUITS
@ 3' HORIZ. SPACING @ ENDS
MIN. 2' CLEARANCE UNDER 12" GAS LINE
ENDS TO BE 3" BELOW NATURAL GROUND,
CAPPED & MARKED WITH TEE POST.

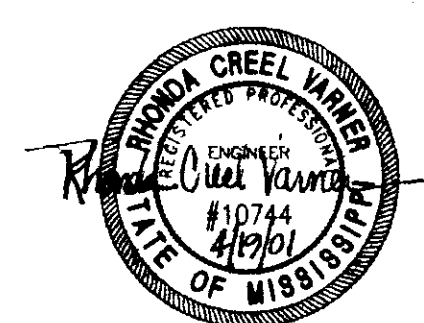
8"x8" TEE
2 8" GATE VALVES
& BOXES

30 L.F. 15" HDPE
N12 CASING REQ'D.

20' UTILITY & DRAINAGE EASEMENT
134.20 L.F.
@ 0.387% (AS-BUILT)
8" SAN SEW

66.38 L.F.
@ 0.753% (AS-BUILT)
8" SAN SEW

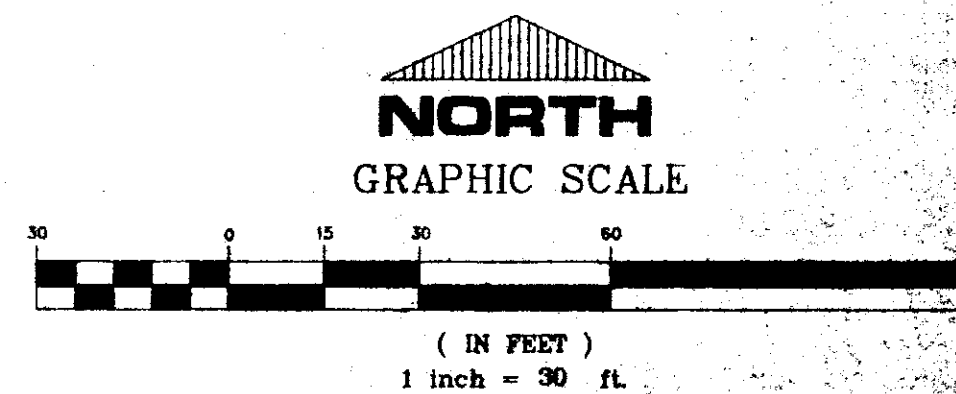
19.49 L.F.
@ 2.226% (AS-BUILT)
8" SAN SEW



RECORD DRAWING

BY: RName DATE: 4/19/01

This is an interim set of as built plans of water and sanitary sewer improvements within La Roche, as they exist on April 19, 2001. A complete set of record drawings, including improvements within La Roche, will be submitted upon completion of Montrose.



MONTROSE
A DEVELOPMENT OF
MONTROSE, LLC

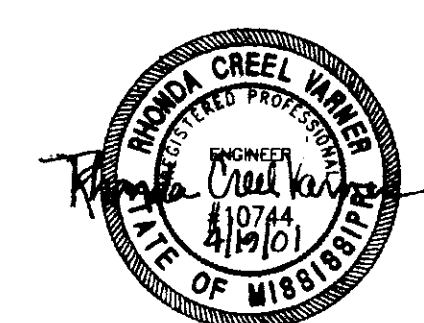
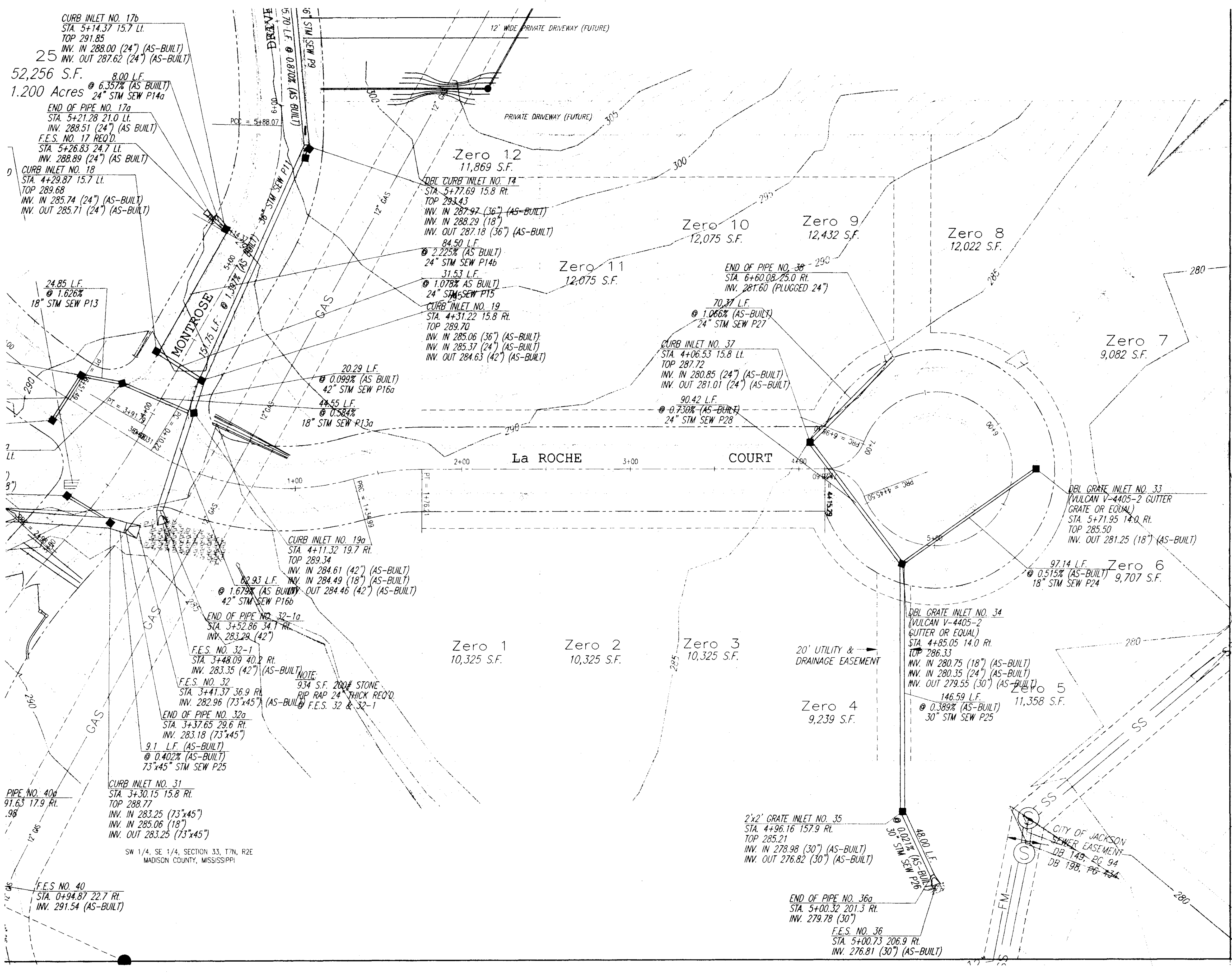
LA ROCHE
WATER & SEWER LAYOUT

CITY OF RIDGELAND
MADISON COUNTY, MISSISSIPPI

DESIGN	REV	DATE	BY
1	1	4/19/01	RName
2	1	4/19/01	RName
3	1	4/19/01	RName

STERLING
CONSULTANTS

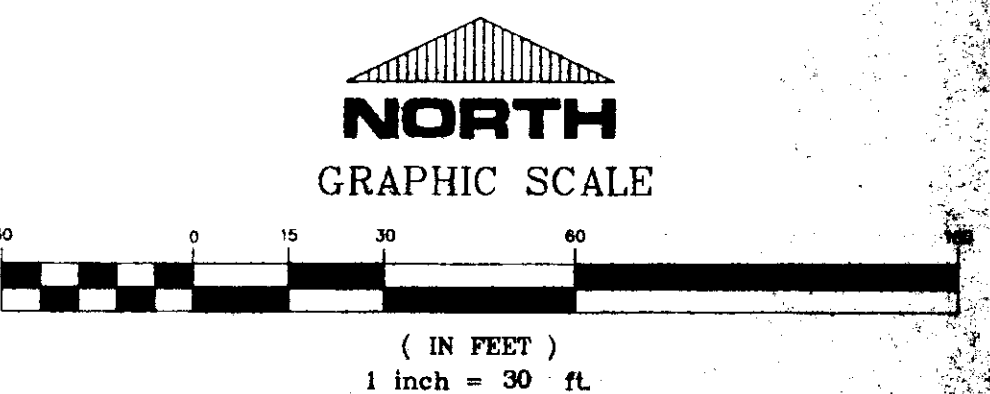
PWP-01308



RECORD DRAWING

BY: R. Winer DATE: 4/19/01

This is an interim set of as built plans of storm drainage improvements within La Roche as they exist on April 19, 2001. A complete set of record drawings, including improvements within La Roche, will be submitted upon completion of Montrose.



MONTROSE
A DEVELOPMENT OF
MONTROSE, LLC

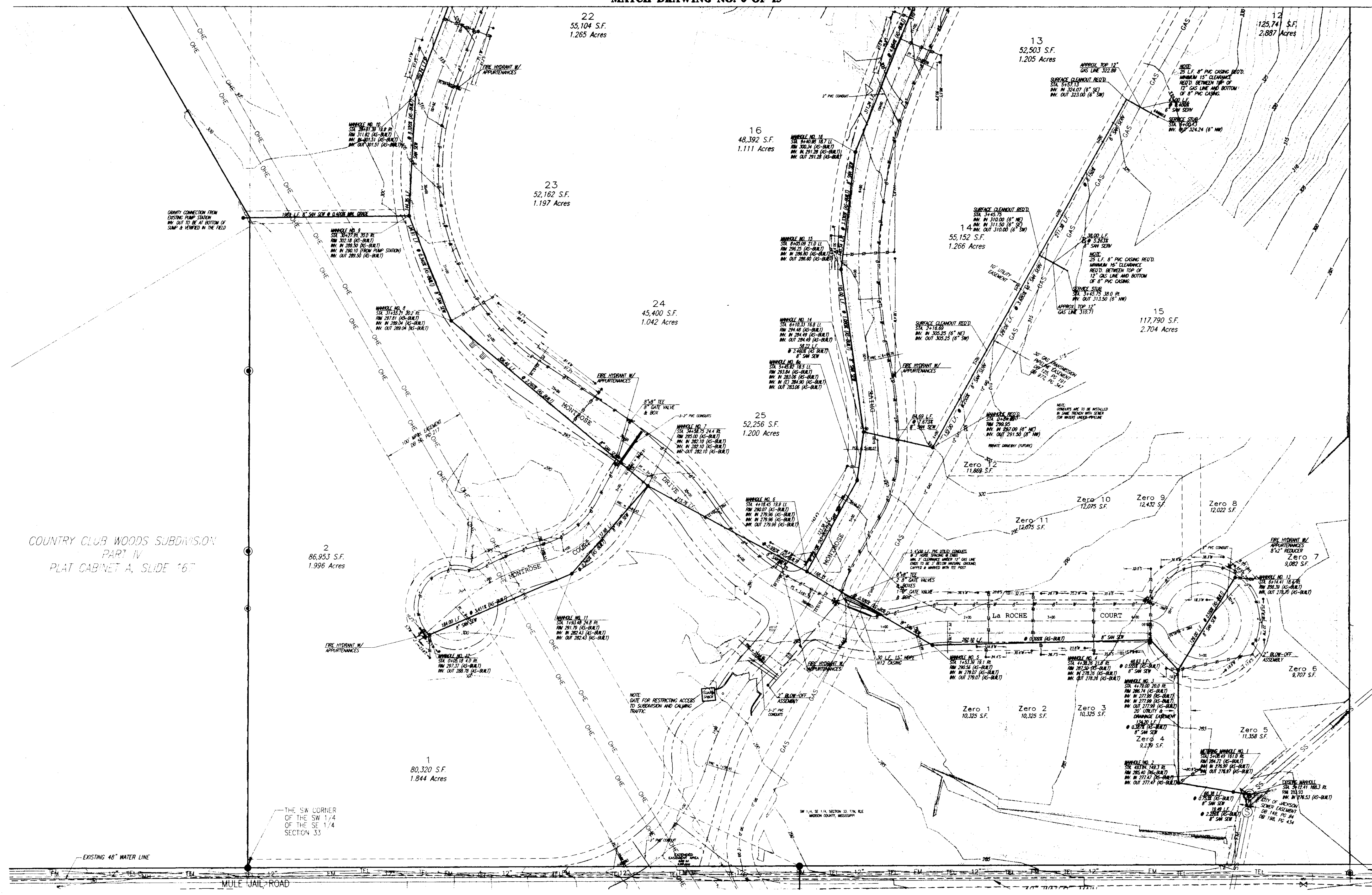
LA ROCHE
STORM DRAINAGE LAYOUT

CITY OF RIDGELAND
MADISON COUNTY, MISSISSIPPI

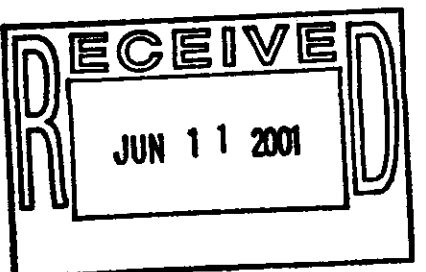
DESIGN REV.	DATE	BY
DRAWN REV.	DATE	BY
CHECKED REV.	DATE	BY
SCALE	1"=30'	



G:\Projects\MONTROSE\MONT-001.dwg Thu Apr 19 15:27:13 2001 Erny Bates - Sterling Consultants, Inc.

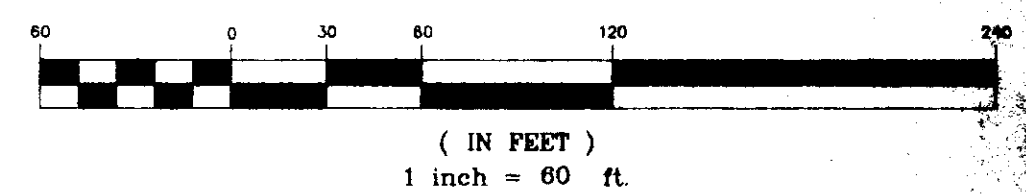


COUNTRY CLUB WOODS SUBDIVISION
PART IV
PLAT CABINET A, SLIDE 167



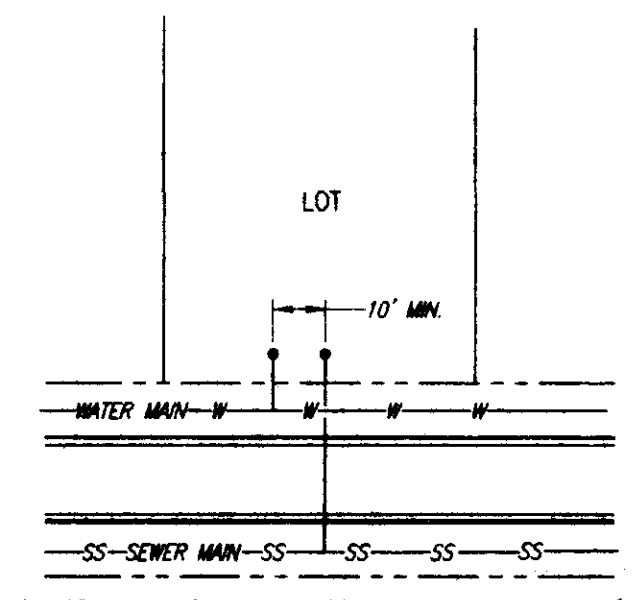
- OFFICE COPY
- PLANS REVIEW
- Public Works Director
- Building Official
- Traffic Engineer
- Drainage Engineer
- Fire Official

Site plans will not go forward to the Architectural Review Board or the Mayor and Board of Aldermen prior to the above review.



RECORD DRAWING

BY: *R. W. ...* DATE: 6/11/01



TYPICAL WATER & SEWER SERVICE LOCATION DETAIL
NOT TO SCALE



MONTROSE
A DEVELOPMENT OF
MONTROSE, LLC

SOUTH HALF
WATER & SEWER LAYOUT

CITY OF RIDGELAND
MADISON COUNTY, MISSISSIPPI

DESIGN R.C.V.	DATE: 10/10/00	DRAWING NO. 5 of 15
DRAWN R.D.B.	DATE: 10/10/00	
CHECKED R.C.V.	DATE: 11/10/00	
SCALE: 1"=60'		

PWP-01308

AS-BUILT PLANS	RCV	6/11/01
REVISED STREET GRADES, STORM & SANITARY SEWER	RDB	11/10/00
REVISION	BT	DATE

HAWTHORNE GREEN SUBDIVISION, PART 1
PLAT CABINET C, SLIDE 44

HAWTHORNE GREEN SUBDIVISION
PART 2A
PLAT CABINET C, SLIDE 128

PART 3
PLAT CABINET C, SLIDE 183

HAWTHORNE GREEN SUBDIVISION
PART 1
PLAT CABINET C, SLIDE 44

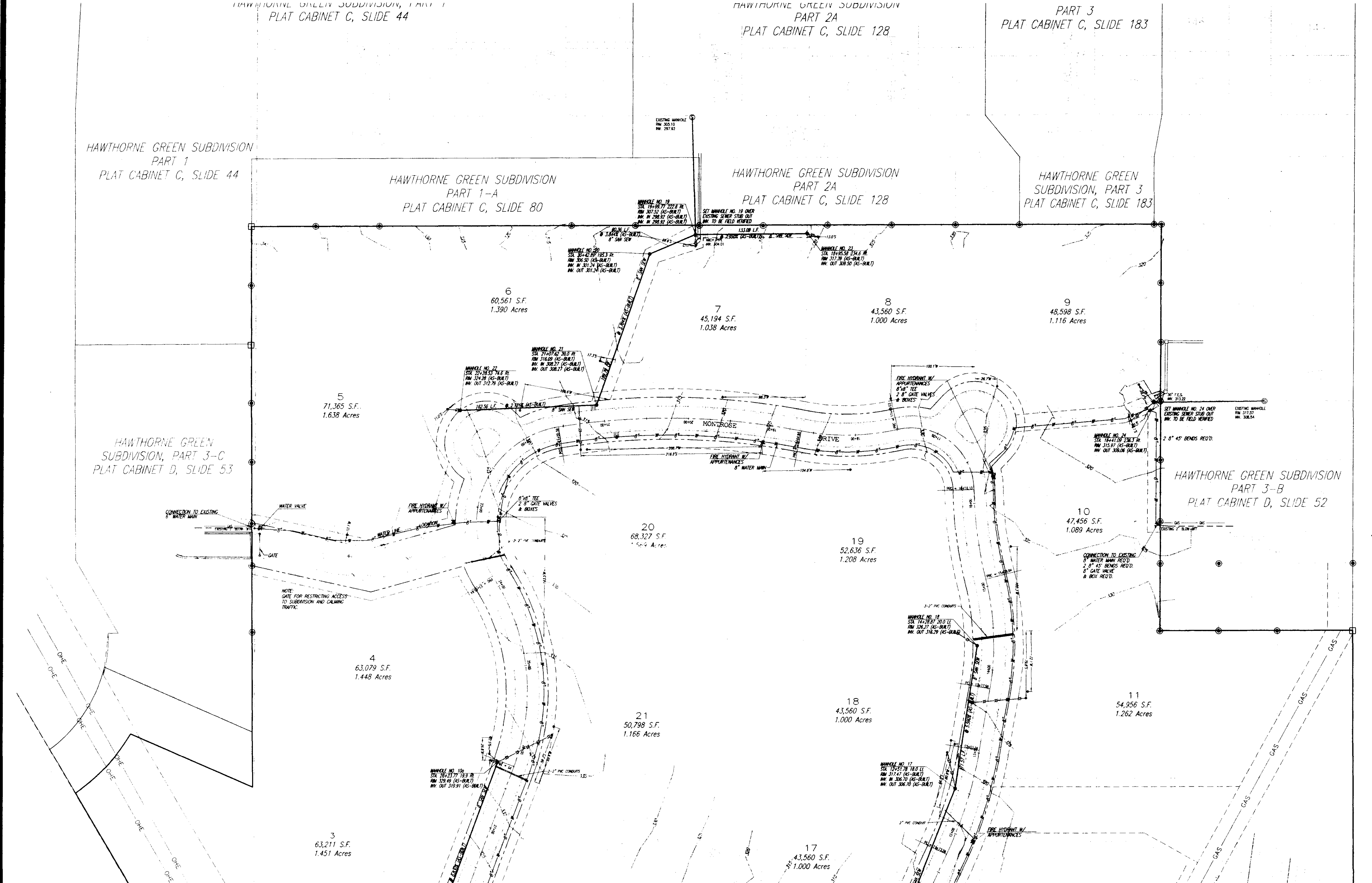
HAWTHORNE GREEN SUBDIVISION
PART 1-A
PLAT CABINET C, SLIDE 80

HAWTHORNE GREEN SUBDIVISION
PART 2A
PLAT CABINET C, SLIDE 128

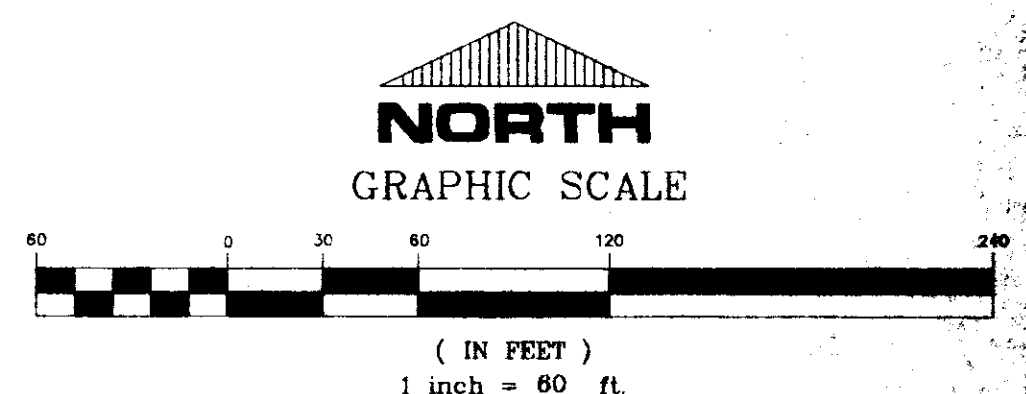
HAWTHORNE GREEN SUBDIVISION, PART 3
PLAT CABINET C, SLIDE 183

HAWTHORNE GREEN SUBDIVISION, PART 3-C
PLAT CABINET D, SLIDE 53

HAWTHORNE GREEN SUBDIVISION
PART 3-B
PLAT CABINET D, SLIDE 52

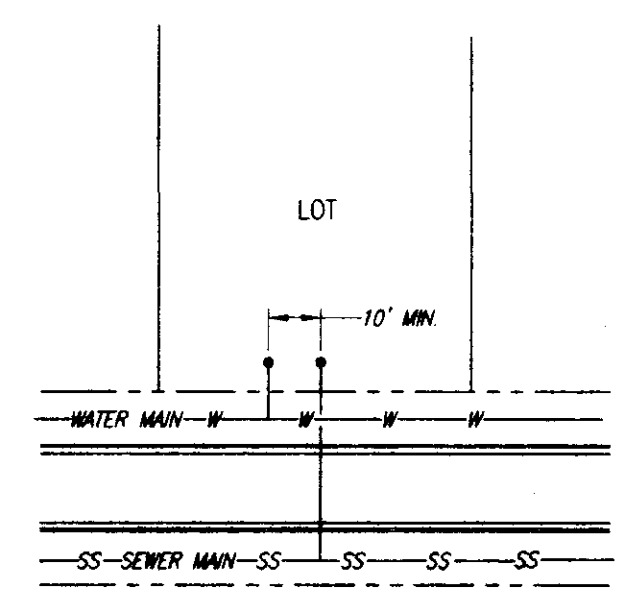


MATCH DRAWING NO. 5 OF 15



RECORD DRAWING

BY: *R. Name* DATE: 6/11/01



TYPICAL WATER & SEWER SERVICE LOCATION DETAIL
NOT TO SCALE



MONTROSE
A DEVELOPMENT OF
MONTROSE, LLC

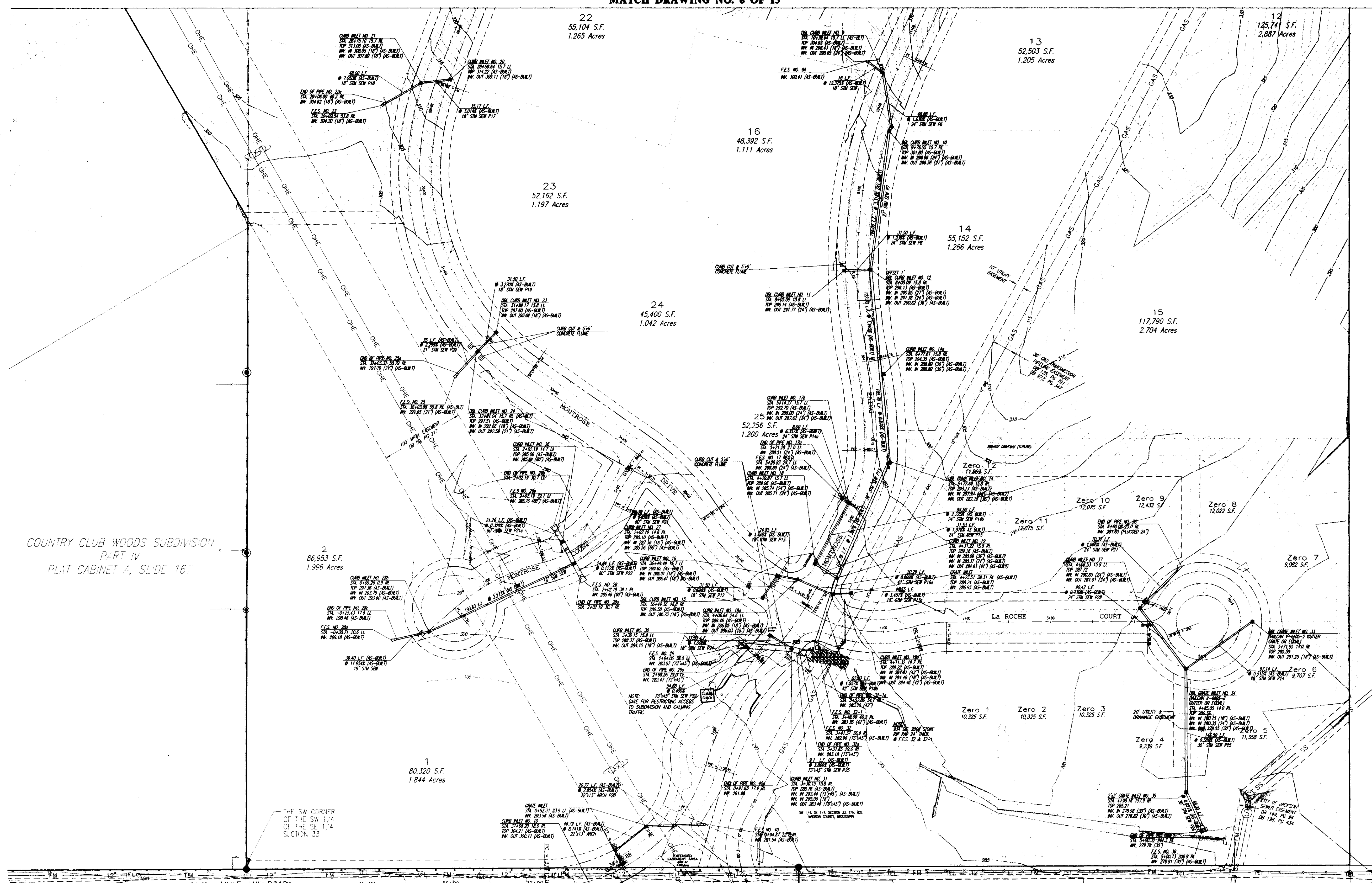
NORTH HALF
WATER & SEWER LAYOUT

CITY OF RIDGELAND
MADISON COUNTY, MISSISSIPPI

DESIGN: RGV	DATE: 10/20/00		DRAWING NO. 6 of 15
DRAWN: RDP	DATE: 11/20/00		
CHECK: RGV	DATE: 11/20/00		
SCALE: 1"=60'			

REVISION	BY	DATE
AS-BUILT PLANS	RGV	06/11/01
REVISED STREET GRADES, STORM & SANITARY SEWER	RDP	11/20/00

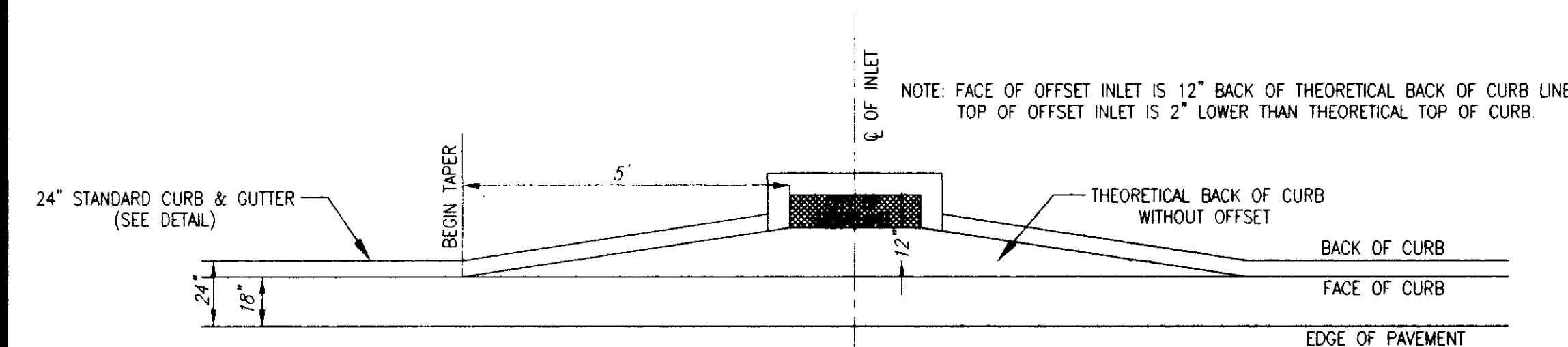
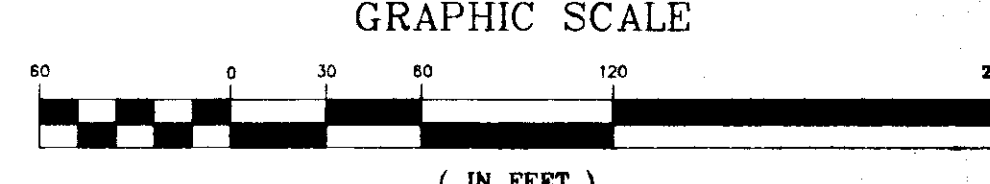
G:\Press\MONTROSE\MONT-001.dwg Mon Jun 11 13:02:34 2001 Gmy Bates - Sterling Consultants, Inc



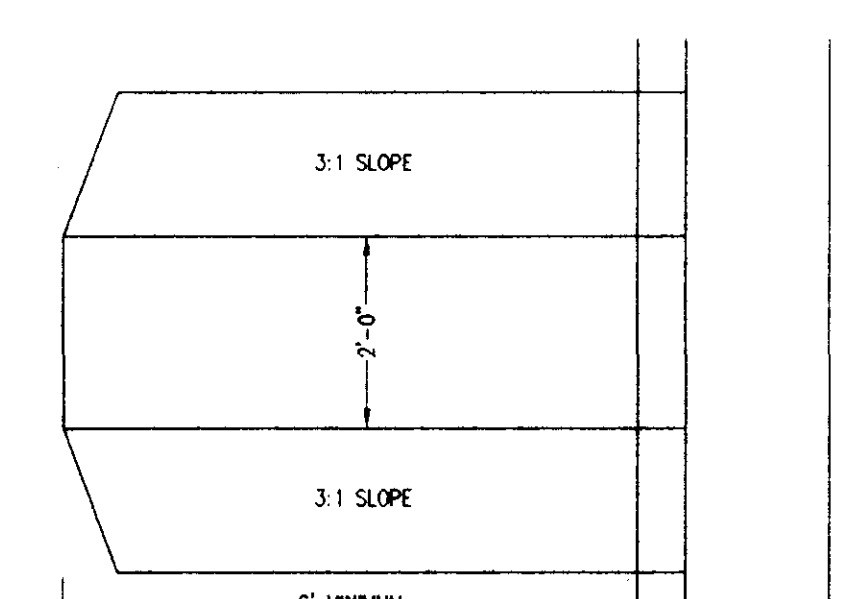
DETAIL INLET NO. 10
N.T.S.

DETAIL INLET NO. 14
N.T.S.

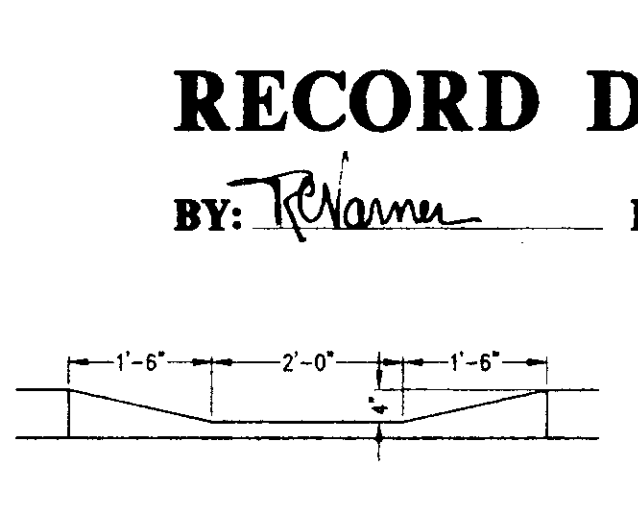
NORTH
GRAPHIC SCALE



OFFSET CURB INLET DETAIL
N.T.S.

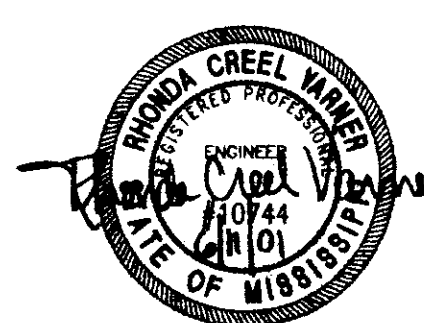


TYPICAL CURB CUT/CONCRETE FLUME
N.T.S.



FRONT VIEW

RECORD DRAWING
BY: *T. Hanner* DATE: 6/11/10



MONTROSE
A DEVELOPMENT OF
MONTROSE, LLC

SOUTH HALF
STORM DRAINAGE LAYOUT

CITY OF RIDGELAND
MADISON COUNTY, MISSISSIPPI

REVISION	BY	DATE
AS-BUILT PLANS	R.C.V.	04/11/10
REVISED STREET GRADES, STORM & SANITARY SEWER	R.D.D.	11/15/10

DESIGN	DATE	SCALE	DRAWING NO.
DESIGN R.C.V.	10/10/10	1"=60'	7 of 15
DRAWN R.D.D.	10/10/10		
CHECKED R.C.V.	11/10/10		

HAWTHORNE GREEN SUBDIVISION, PART 1
PLAT CABINET C, SLIDE 44

HAWTHORNE GREEN SUBDIVISION
PART 2A
PLAT CABINET C, SLIDE 128

PART 3
PLAT CABINET C, SLIDE 183

HAWTHORNE GREEN SUBDIVISION
PART 1
PLAT CABINET C, SLIDE 44

HAWTHORNE GREEN SUBDIVISION
PART 1-A
PLAT CABINET C, SLIDE 80

HAWTHORNE GREEN SUBDIVISION
PART 2A
PLAT CABINET C, SLIDE 128

HAWTHORNE GREEN SUBDIVISION, PART 3
PLAT CABINET C, SLIDE 183

HAWTHORNE GREEN SUBDIVISION, PART 3-C
PLAT CABINET D, SLIDE 53

HAWTHORNE GREEN SUBDIVISION
PART 3-B
PLAT CABINET D, SLIDE 52

5
71,365 S.F.
1.638 Acres

6
60,561 S.F.
1.390 Acres

7
45,194 S.F.
1.038 Acres

8
43,560 S.F.
1.000 Acres

9
48,598 S.F.
1.116 Acres

20
68,327 S.F.
1.569 Acres

19
52,636 S.F.
1.208 Acres

10
47,456 S.F.
1.089 Acres

4
63,079 S.F.
1.448 Acres

21
50,798 S.F.
1.166 Acres

18
43,560 S.F.
1.000 Acres

11
54,956 S.F.
1.262 Acres

3
63,211 S.F.
1.451 Acres

17
43,560 S.F.
1.000 Acres

NOTE FOR RESTRICTING ACCESS TO SUBDIVISION AND CALMING TRAFFIC.

MATCH DRAWING NO. 7 OF 15



(IN FEET)
1 inch = 60 ft.

RECORD DRAWING

BY: *R. Hanna* DATE: 6/1/01



MONTROSE
A DEVELOPMENT OF
MONTROSE, LLC

NORTH HALF
STORM DRAINAGE LAYOUT

CITY OF RIDGELAND
MADISON COUNTY, MISSISSIPPI

REVISION	BY	DATE
AS-BUILT PLANS	R.V.	01/11/01
REVISED STREET GRADES, STORM & SANITARY SEWER	R.P.D.	11/15/00

DESIGN	DATE	10/20/00
DRAWN	R.P.D.	10/20/00
CHECKED	R.V.	11/15/00
SCALE	1"=60'	

STERLING CONSULTANTS
DRAWING NO. 8 - 15

6:\dress\MONTROSE\MONT-001.dwg Mon Jun 11 12:55:46 2001 Ginny Bates - Sterling Consultants, Inc.