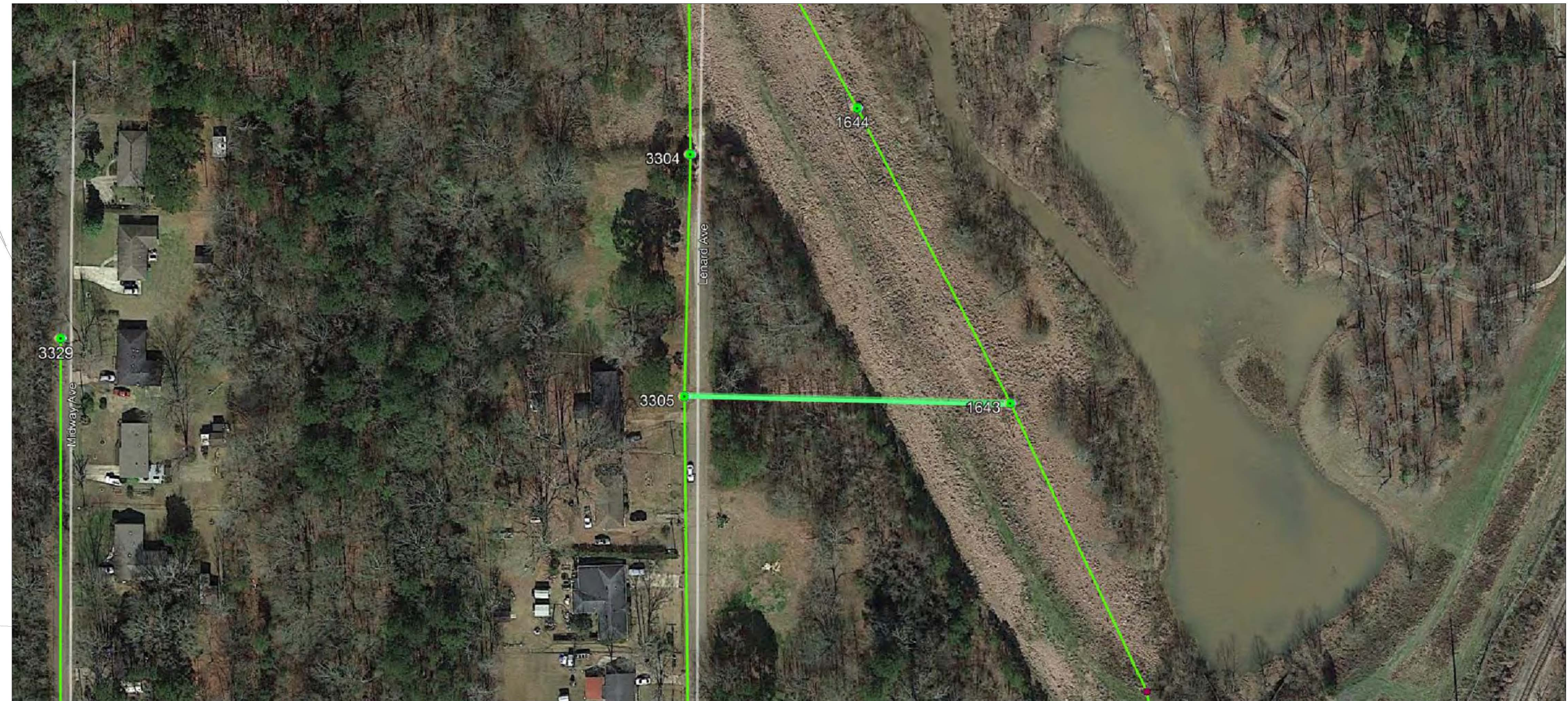
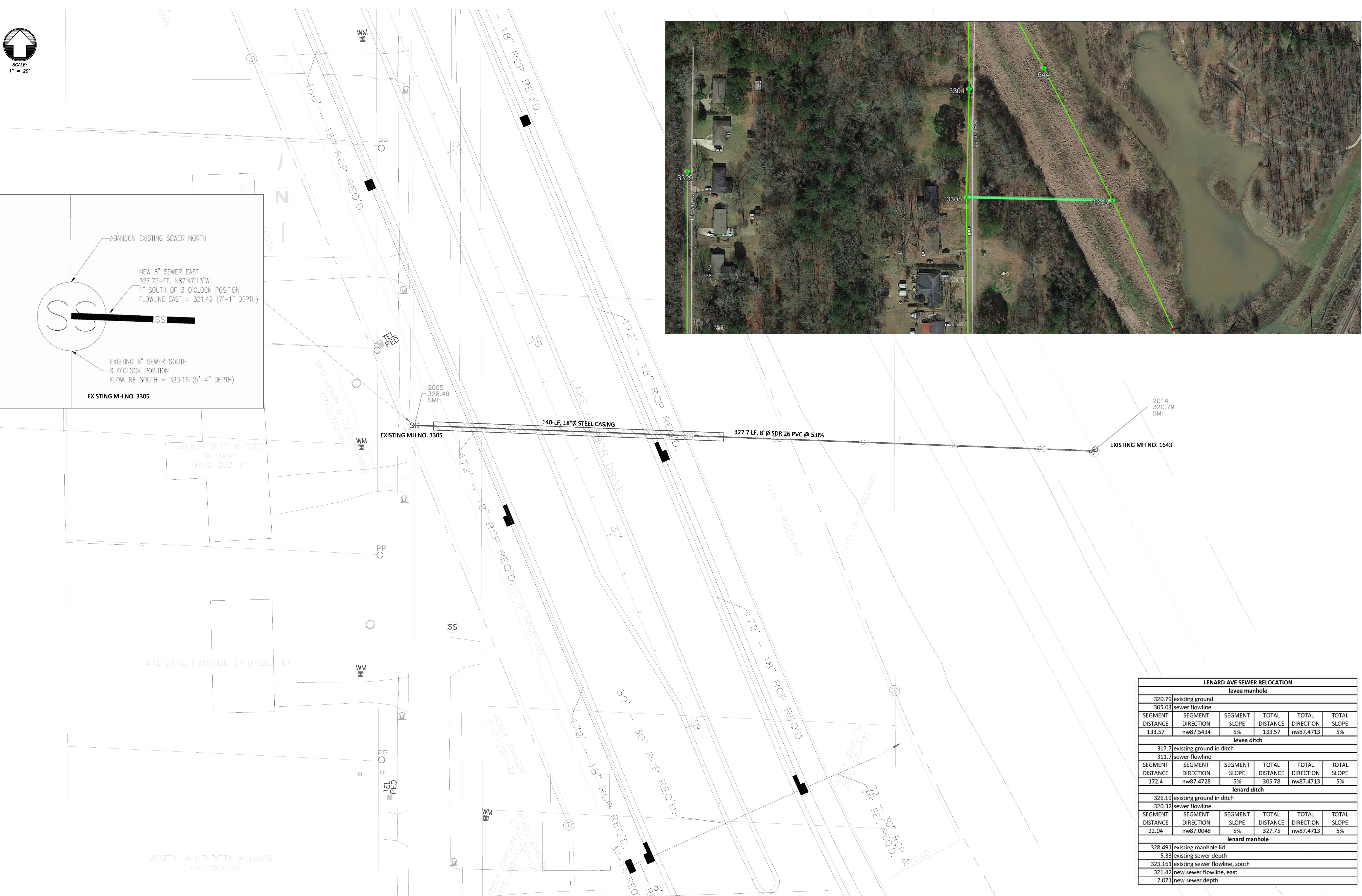
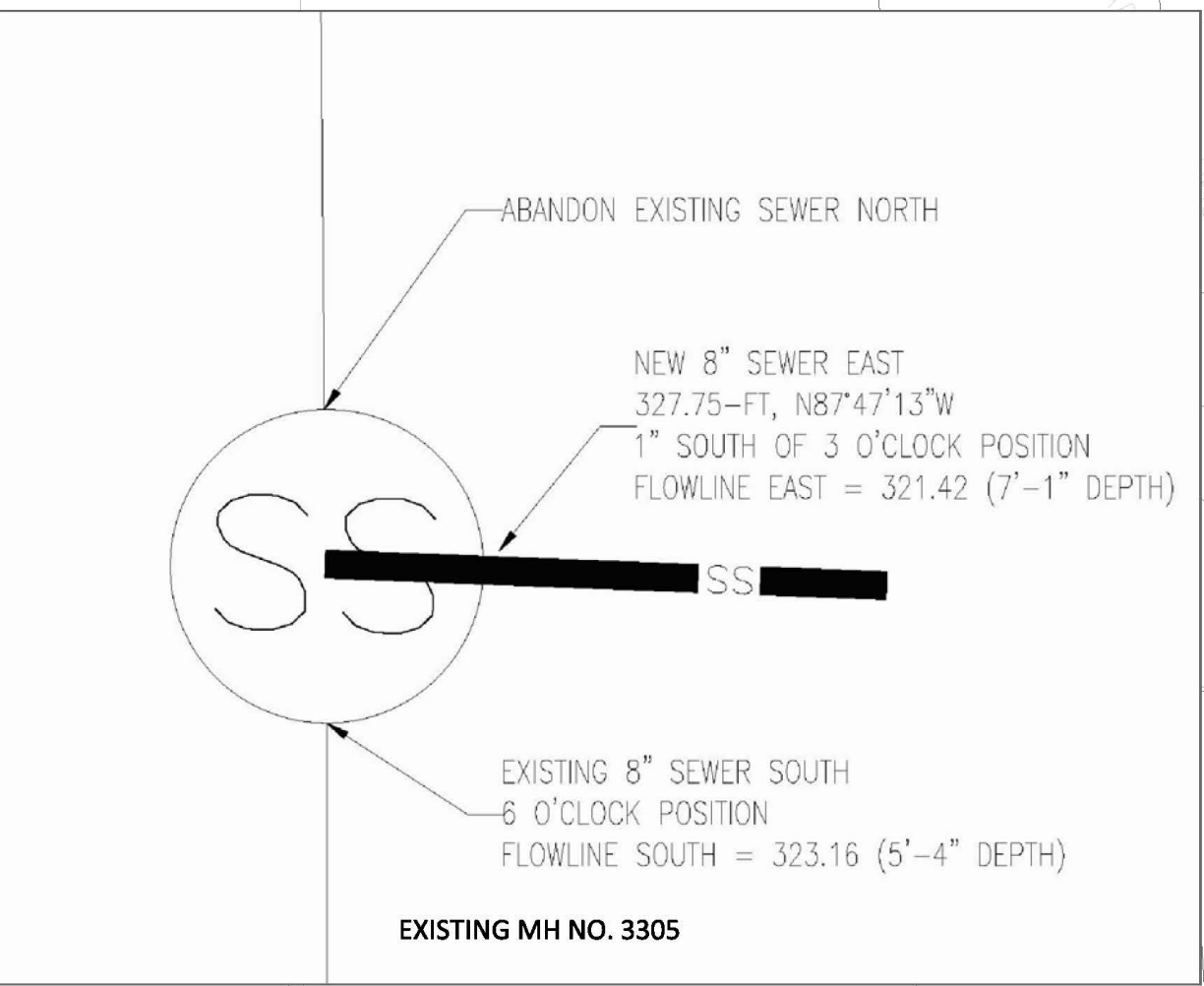


SCALE:  
1" = 20'



LENARD AVE SEWER RELOCATION						
levee manhole						
320.79 existing ground						
305.03 sewer flowline						
SEGMENT DISTANCE	SEGMENT DIRECTION	SEGMENT SLOPE	TOTAL DISTANCE	TOTAL DIRECTION	TOTAL SLOPE	TOTAL SLOPE
133.57	nw87.5434	5%	133.57	nw87.4713	5%	5%
levee ditch						
317.7 existing ground in ditch						
311.7 sewer flowline						
SEGMENT DISTANCE	SEGMENT DIRECTION	SEGMENT SLOPE	TOTAL DISTANCE	TOTAL DIRECTION	TOTAL SLOPE	TOTAL SLOPE
172.4	nw87.4728	5%	305.78	nw87.4713	5%	5%
lenard ditch						
326.19 existing ground in ditch						
320.32 sewer flowline						
SEGMENT DISTANCE	SEGMENT DIRECTION	SEGMENT SLOPE	TOTAL DISTANCE	TOTAL DIRECTION	TOTAL SLOPE	TOTAL SLOPE
22.04	nw87.0048	5%	327.75	nw87.4713	5%	5%
lenard manhole						
328.491 existing manhole lid						
5.33 existing sewer depth						
323.161 existing sewer flowline, south						
321.42 new sewer flowline, east						
7.071 new sewer depth						