

LIVINGSTON ROAD WATER ASSOCIATION, INC.

MADISON COUNTY, MISSISSIPPI

NEW WATER WELL AND HYDROPNEUMATIC TANK

JUNE 1992

BOARD MEMBERS

WILLENHAM CASTILLA - PRESIDENT
WILBERT ROUSER - VICE-PRES.
ALICE LORETTA BURNETT - EXEC-SEC.
JAMES E. HILL - TRES.
WILLIE J. ROUSER - REC-SEC.
BENNIE L. ROUSER
BENNIE SANDERS



VICINITY MAP

ATTORNEY

ALVENO CASTILLA
JACKSON, MISSISSIPPI

FUNDING BY

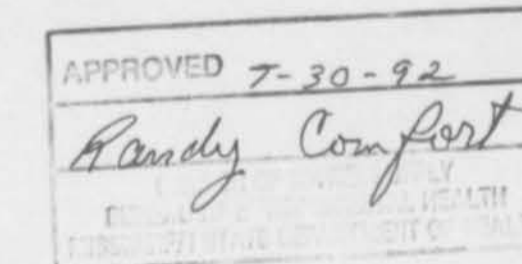
FARMERS HOME ADMINISTRATION

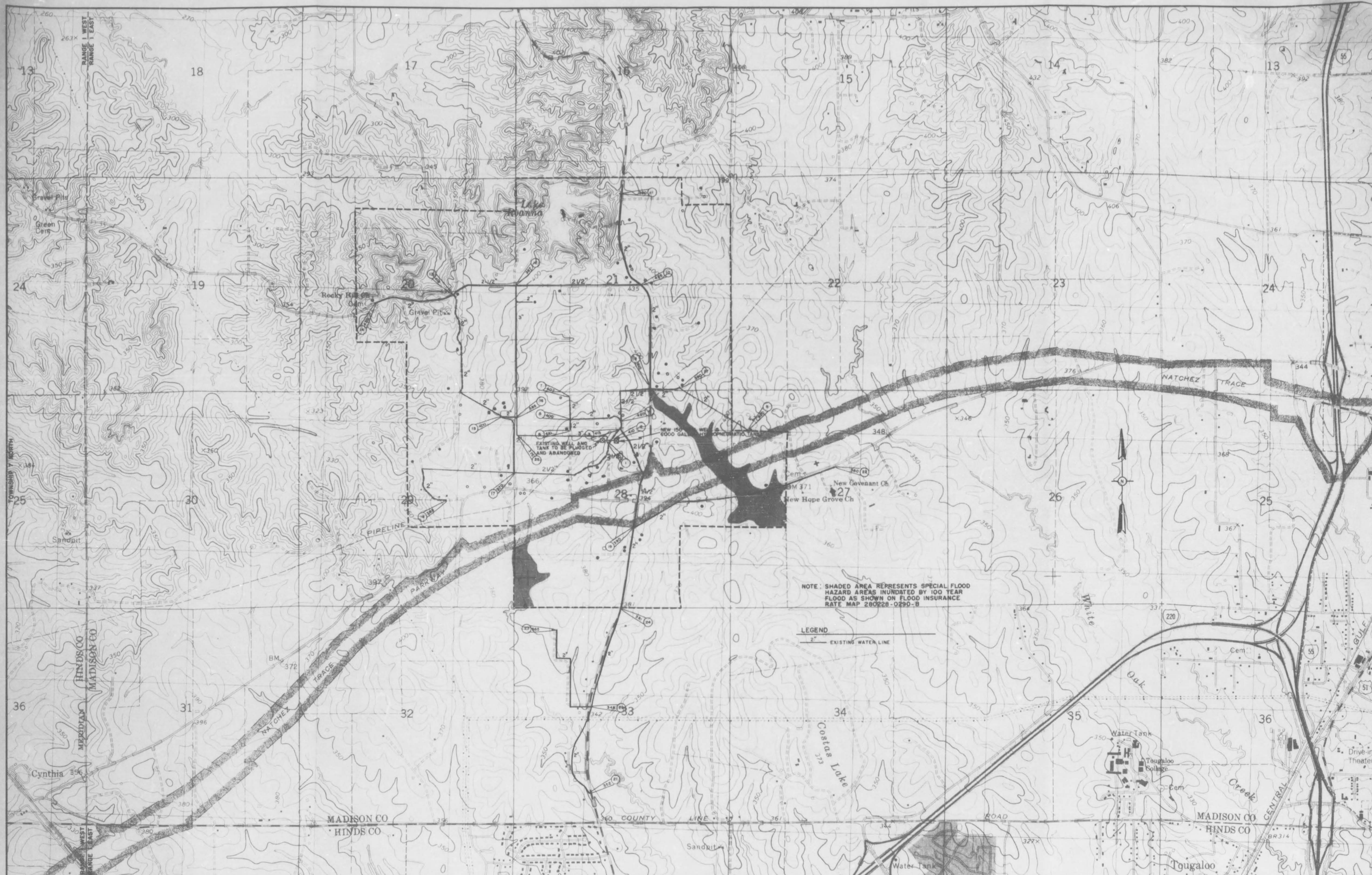


ENGINEER

ALFORD ENGINEERING
-CONSULTING ENGINEERS-
JACKSON, MISSISSIPPI

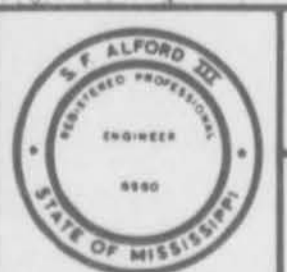
9037





NO.	DATE	NATURE REVISIONS	BY	APP'D.

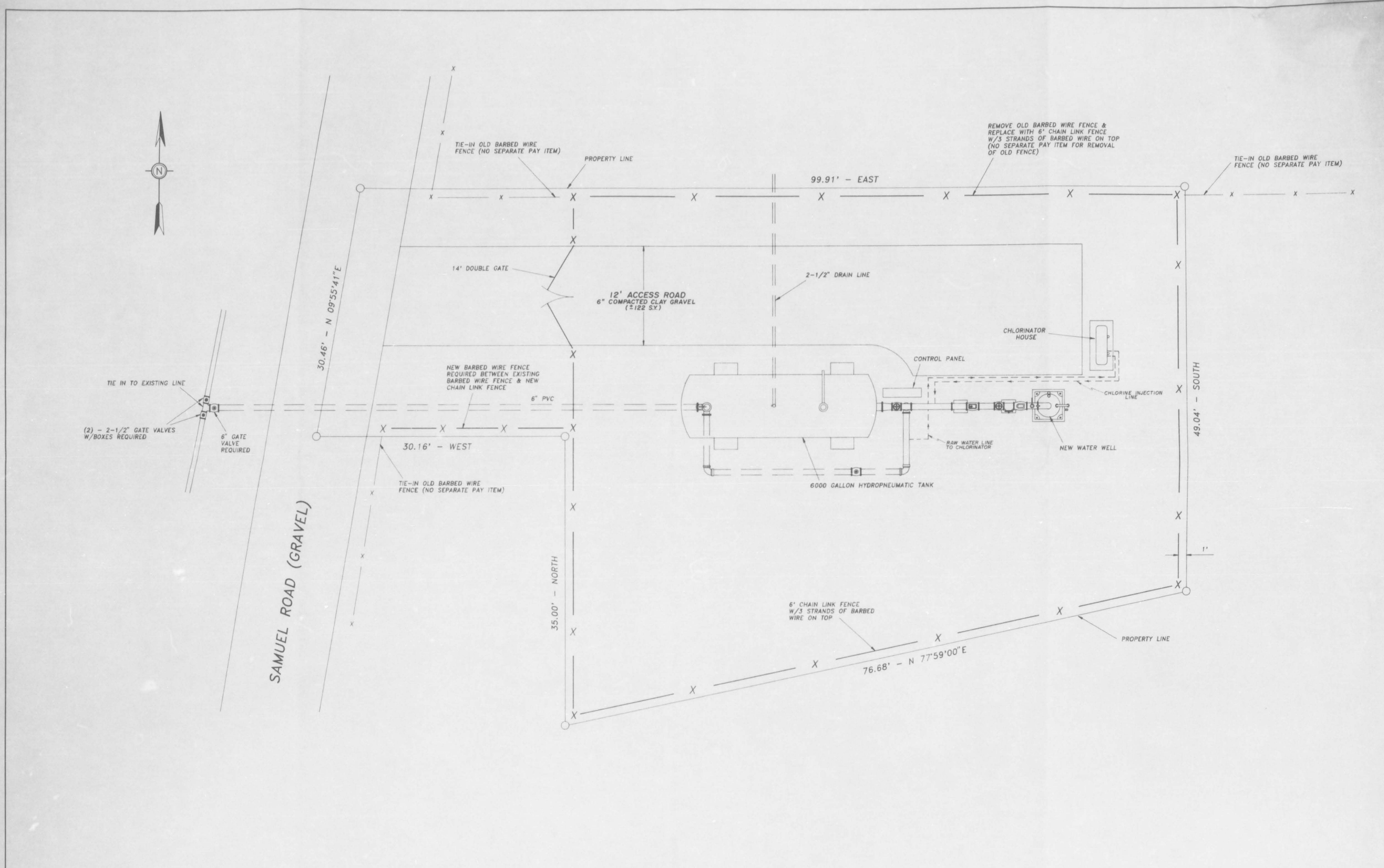
DESIGNED	DATE
S.F.A.	1/92
DRAWN	SCALE
T.A.H.	1"=1000'



LIVINGSTON ROAD WATER ASSOCIATION, INC.
 MADISON COUNTY, MISSISSIPPI
ALFORD ENGINEERING CONSULTING ENGINEERS
 JACKSON, MISSISSIPPI

LAYOUT

PROJECT NO.	
0215.0	
FILE NO.	SHEET NO.
L	L



NO.	DATE	NATURE REVISIONS	BY	APP'D

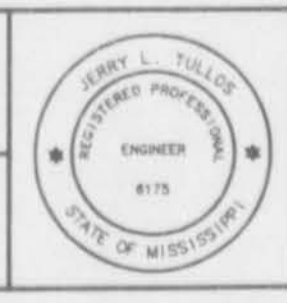
DESIGNED
S.F.A.
DATE
6/92

DRAWN
T.A.H.
SCALE
1" = 5'



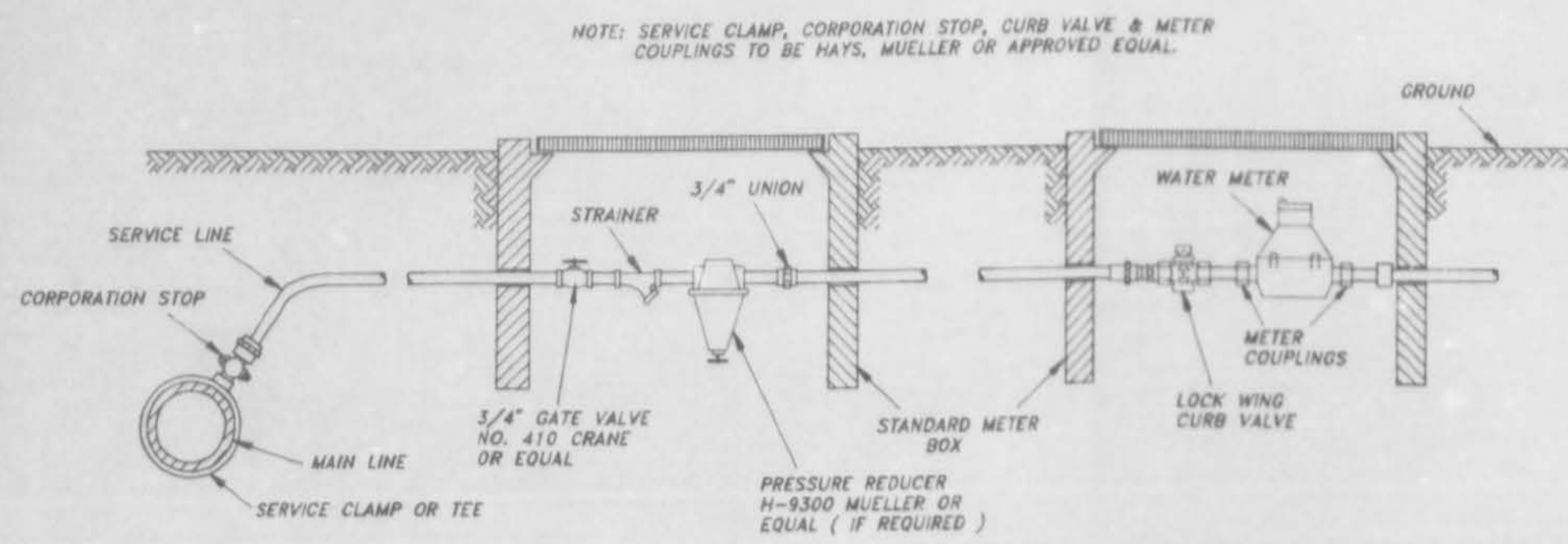
LIVINGSTON ROAD WATER ASSOCIATION, INC.
MADISON COUNTY, MISSISSIPPI

ALFORD ENGINEERING CONSULTING ENGINEERS
JACKSON, MISSISSIPPI

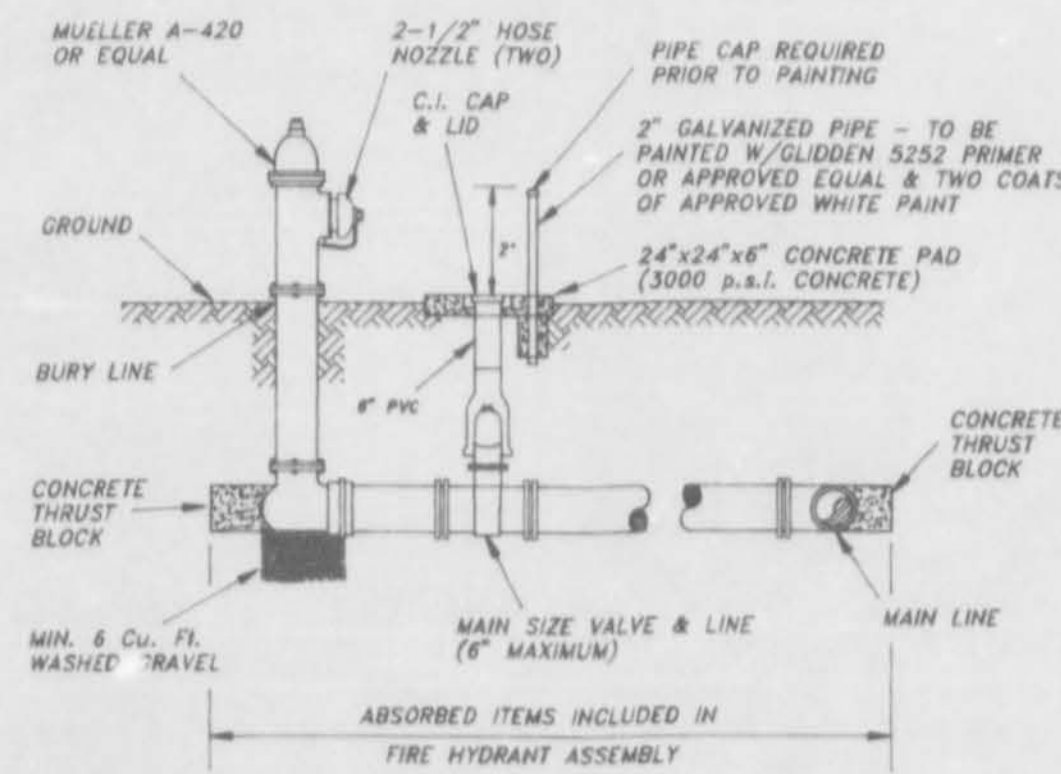


WELL SITE DETAILS

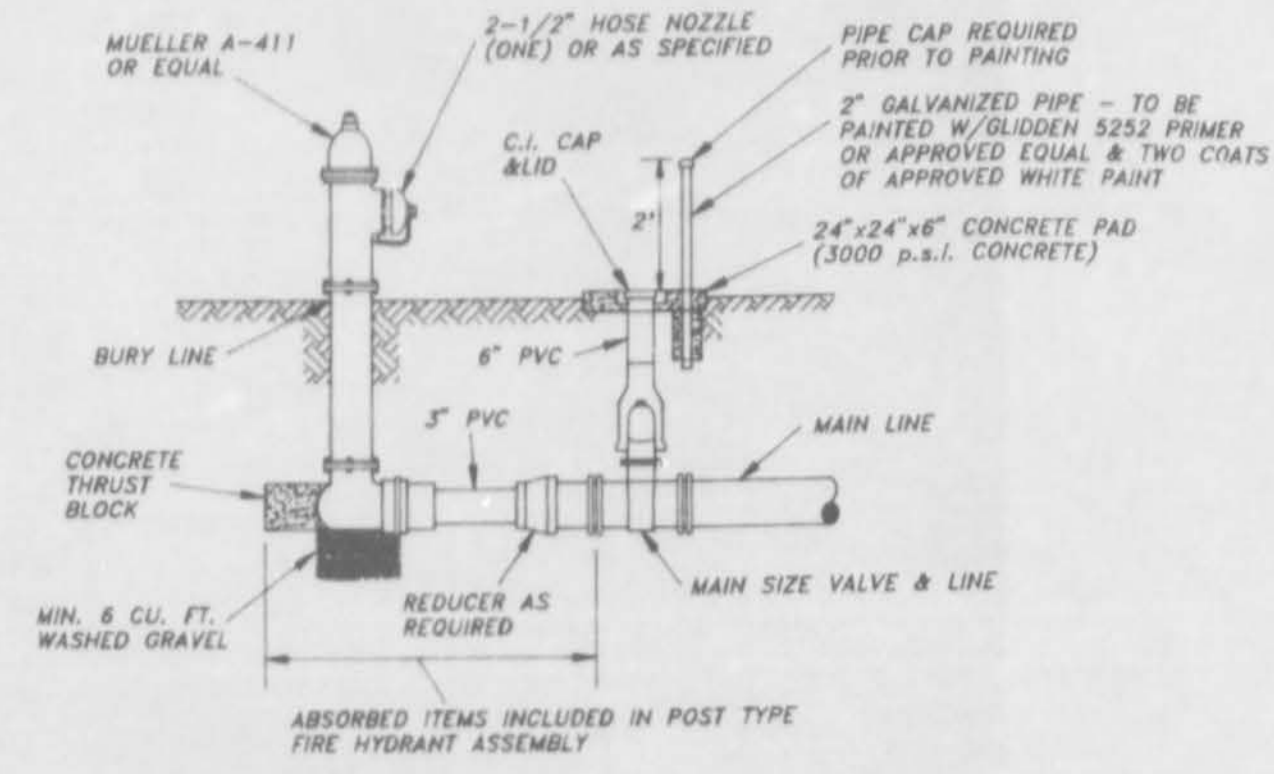
PROJECT NO. 0215.0
FILE NO. SHEET NO. L 3



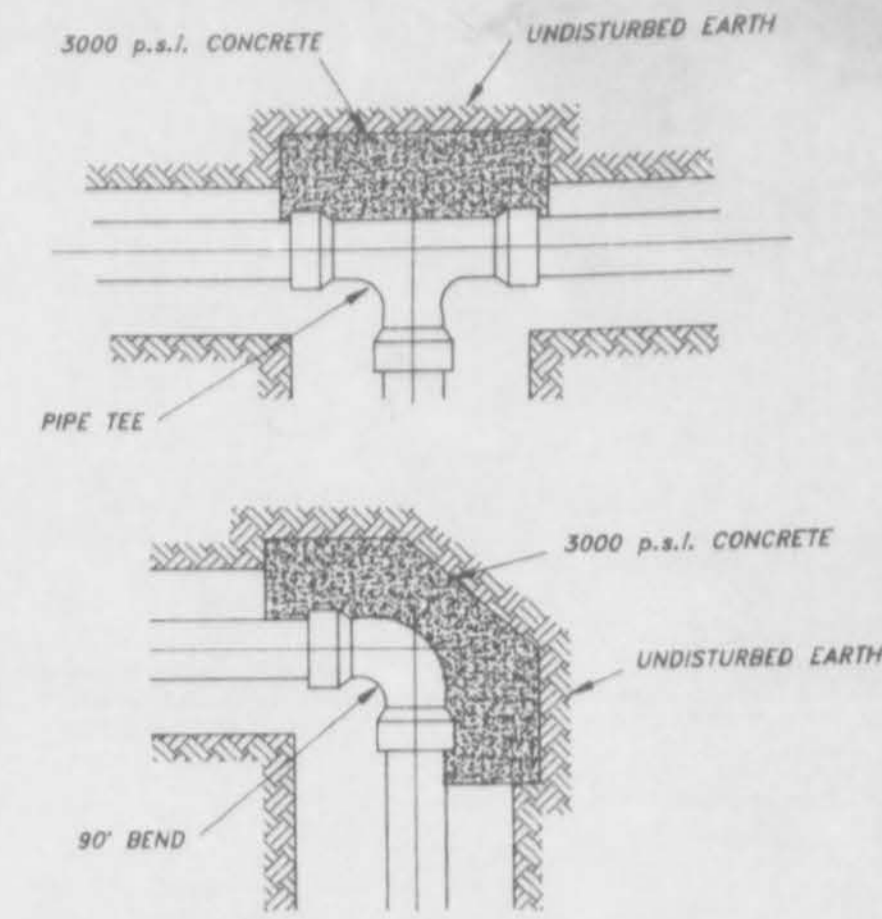
METER SERVICE ASSEMBLY WITH INDIVIDUAL PRESSURE REDUCER



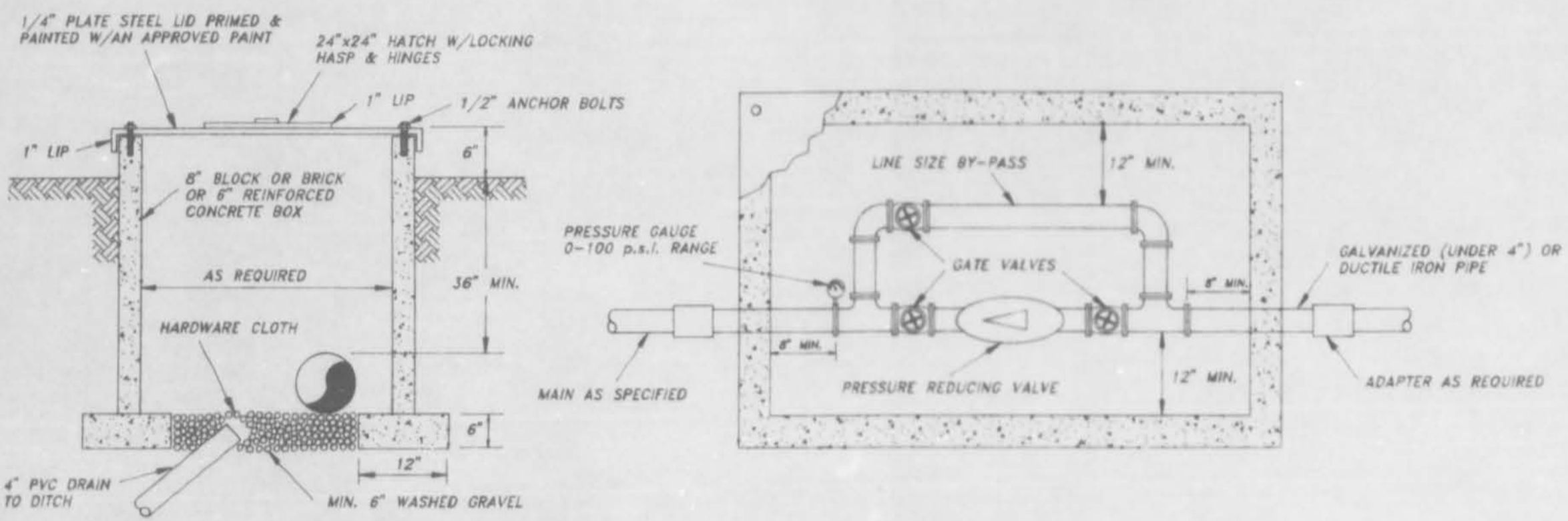
FIRE HYDRANT INSTALLATION



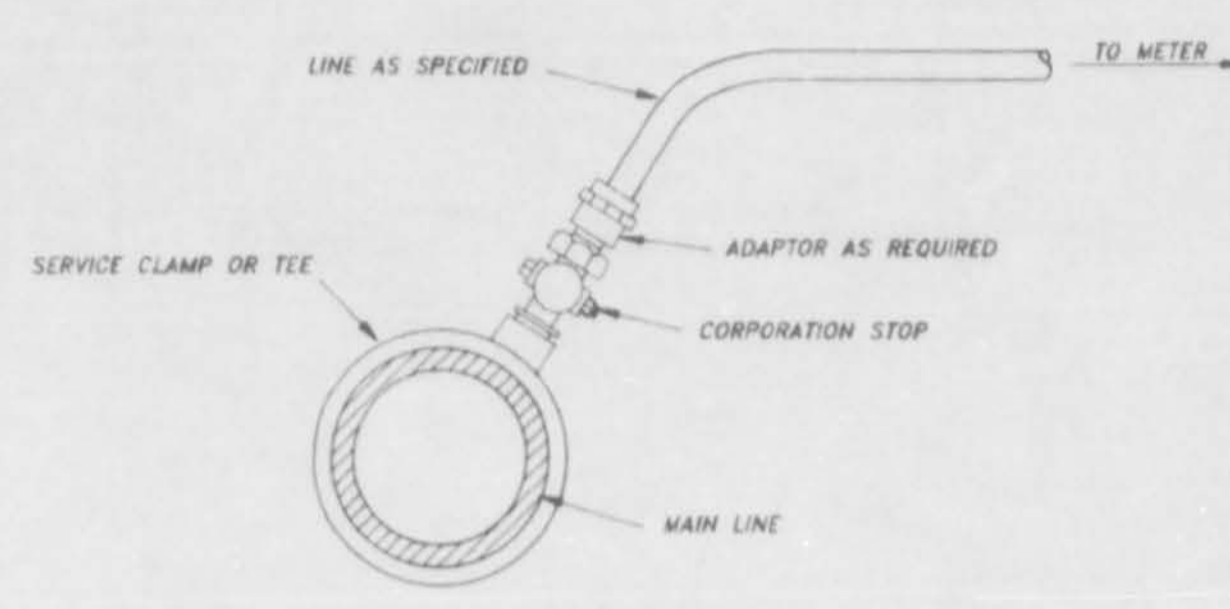
FIRE HYDRANT INSTALLATION-POST TYPE



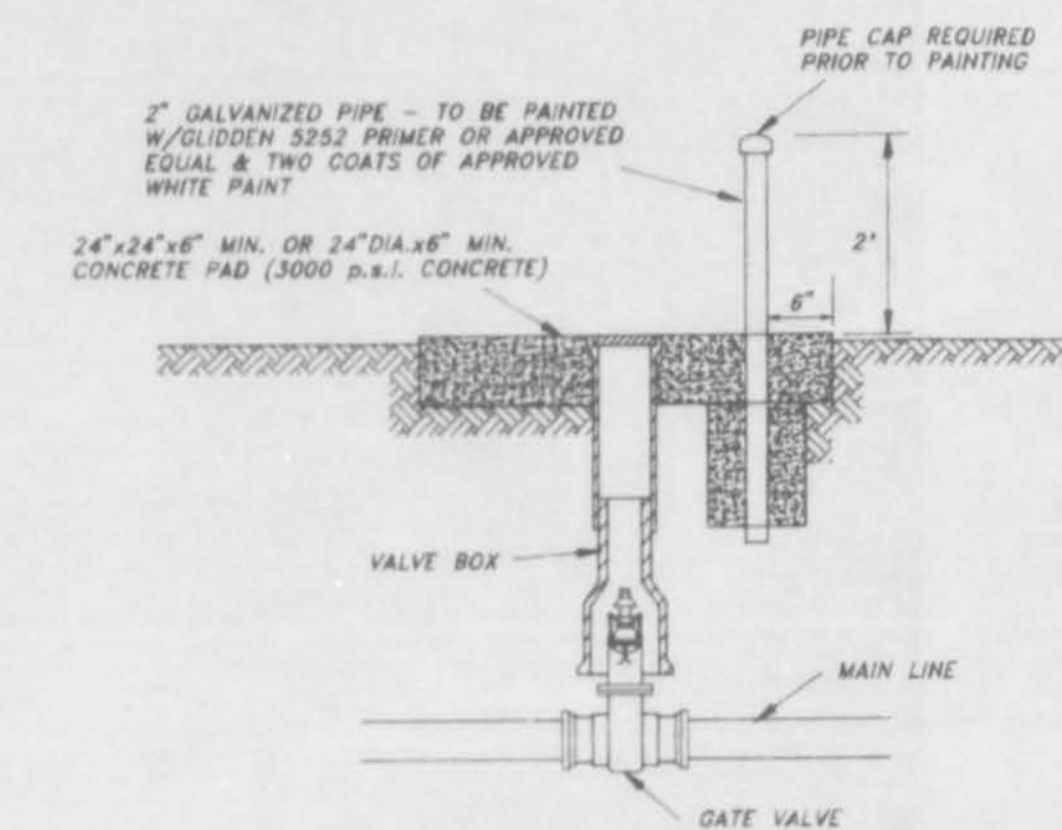
THRUST BLOCKING



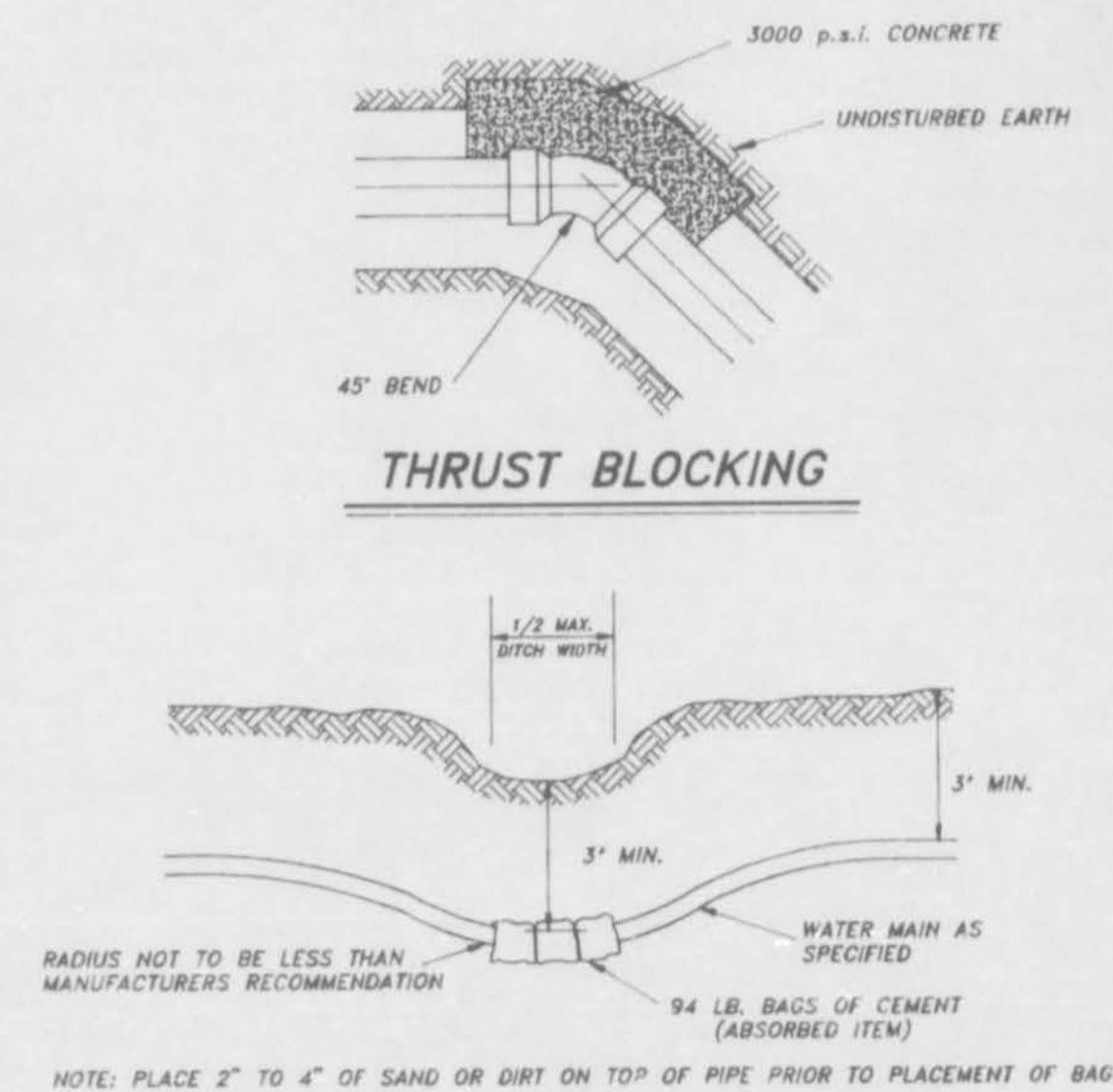
PRESSURE REGULATOR ASSEMBLY



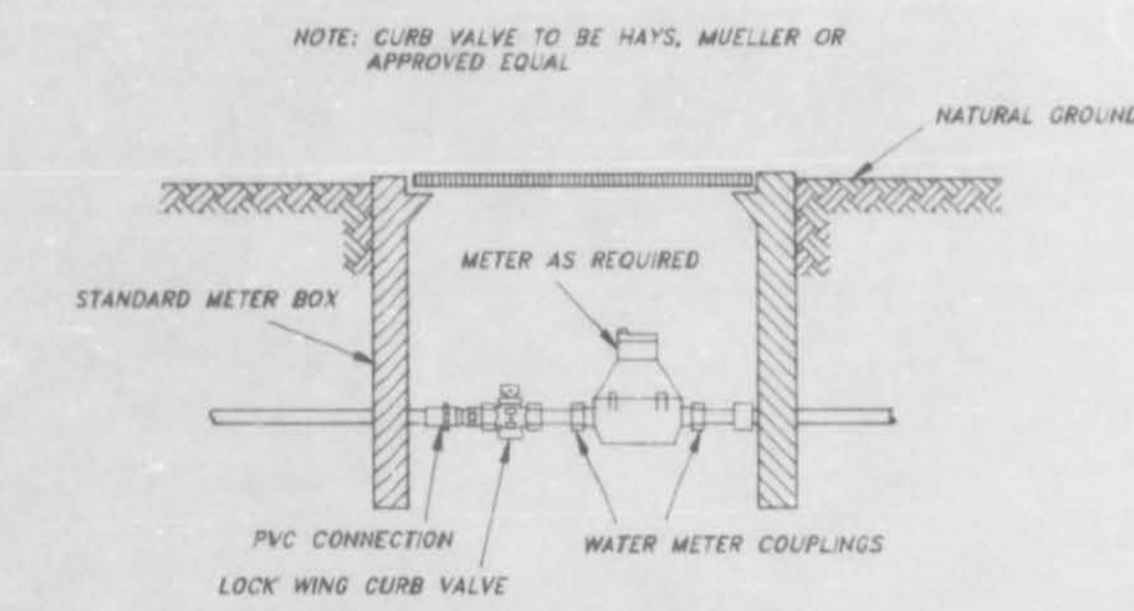
SERVICE CONNECTION



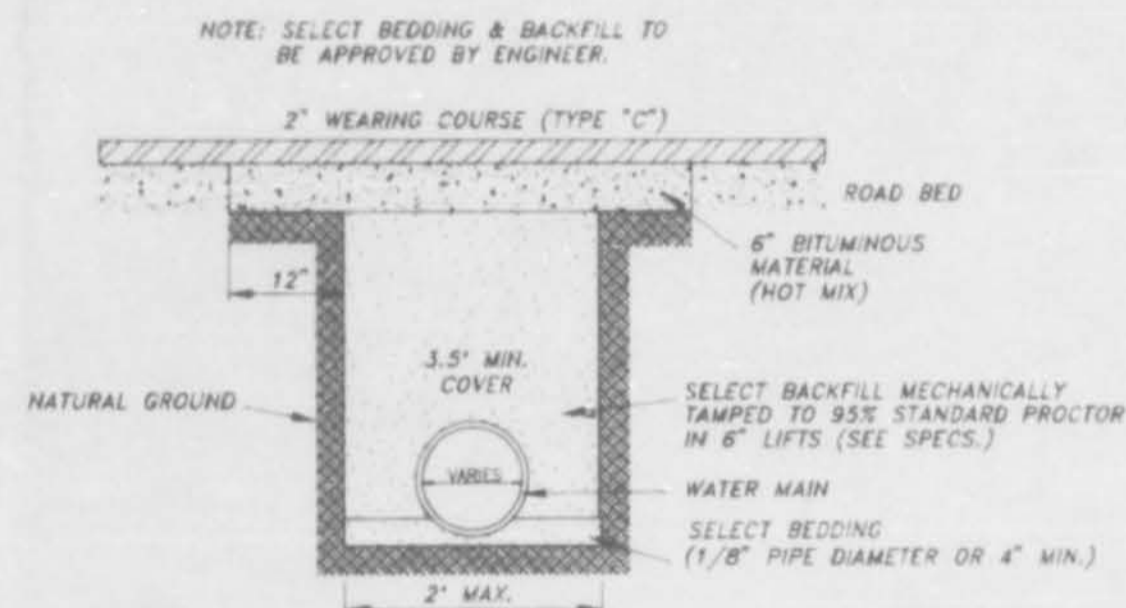
GATE VALVE ASSEMBLY



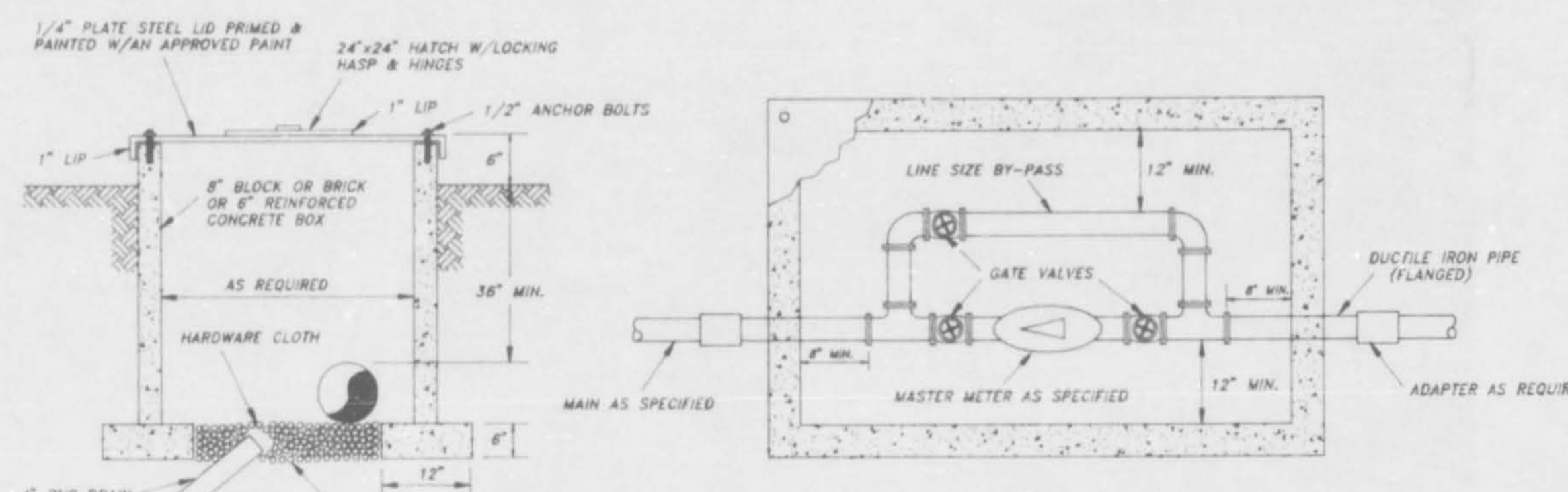
DITCH CROSSING



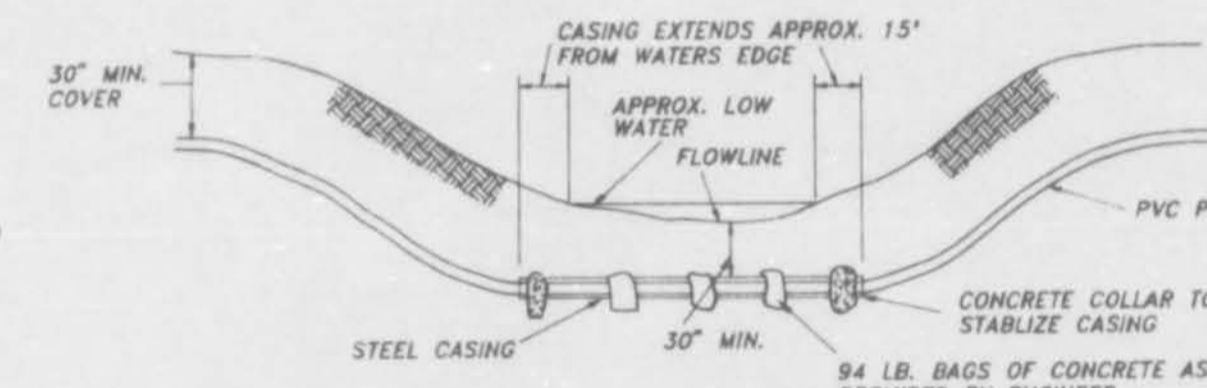
METER SERVICE ASSEMBLY



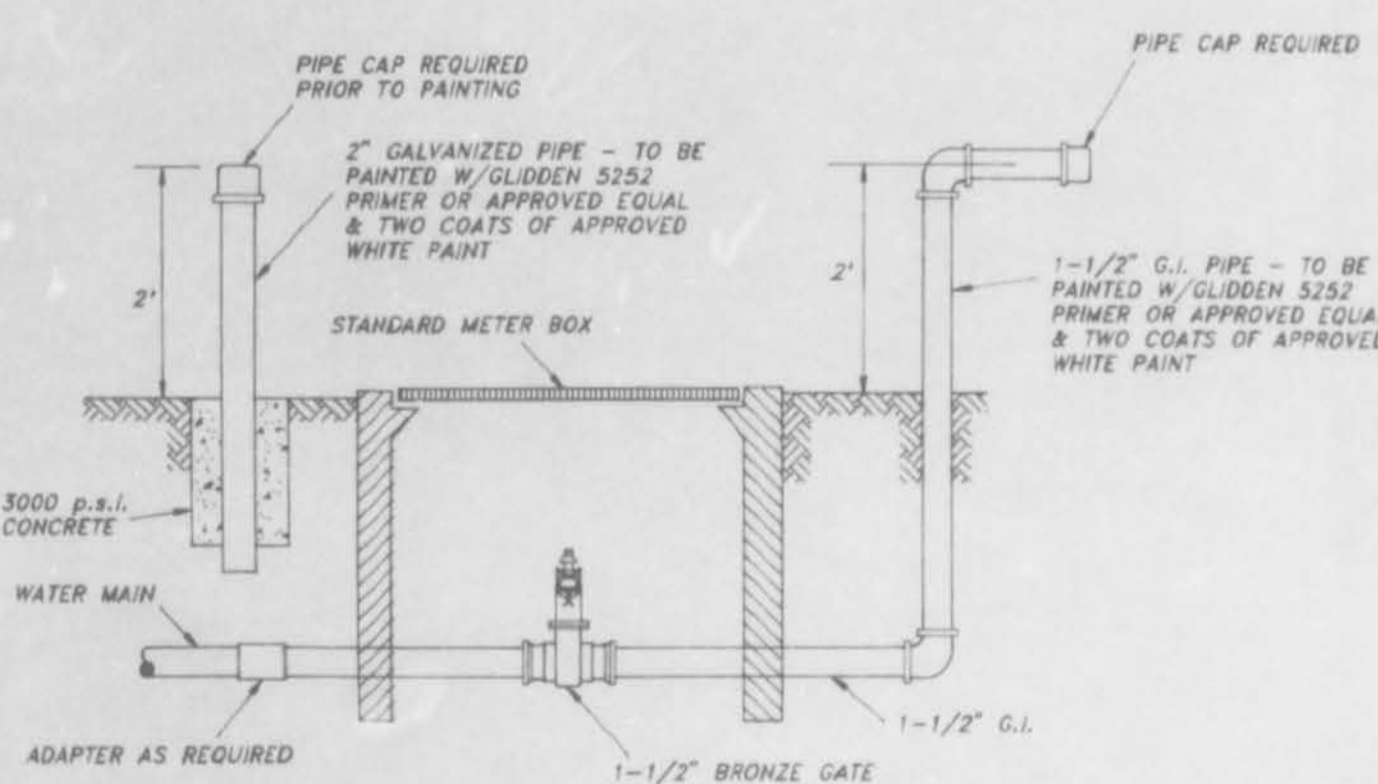
TYPICAL PAVED STREET REPAIR



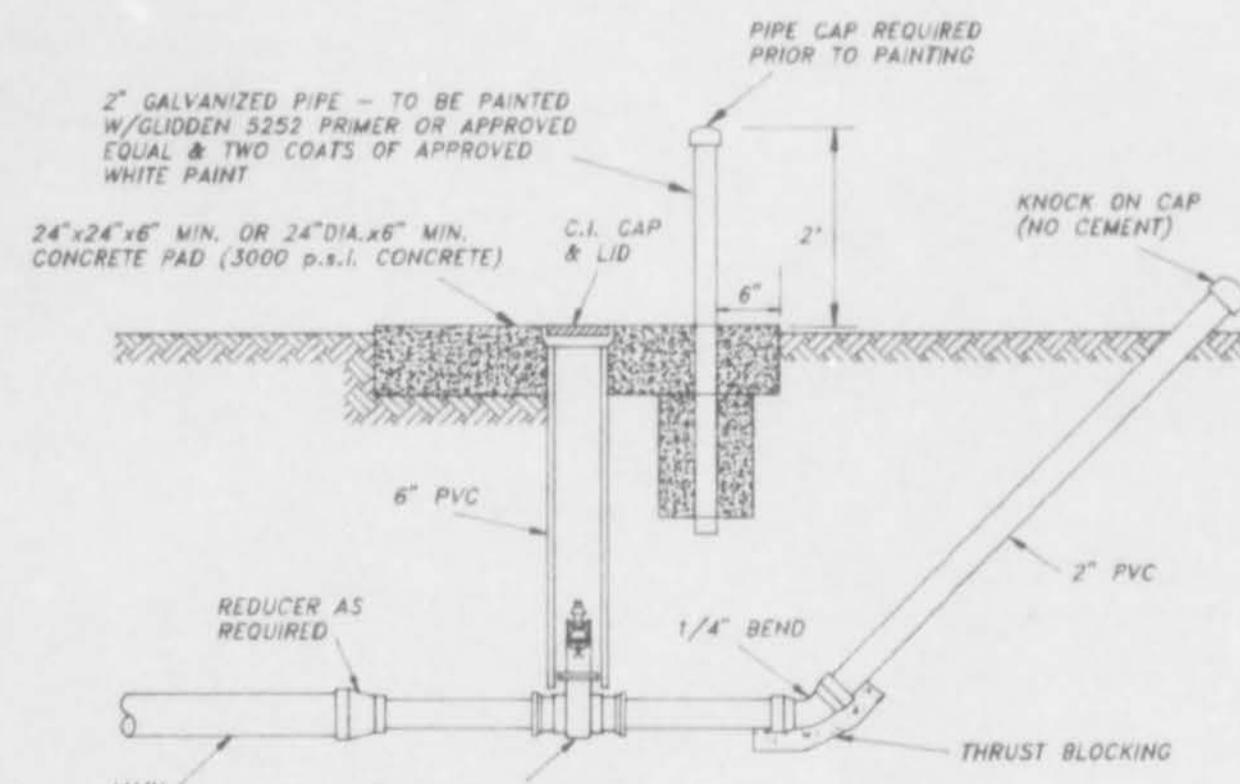
MASTER METER ASSEMBLY



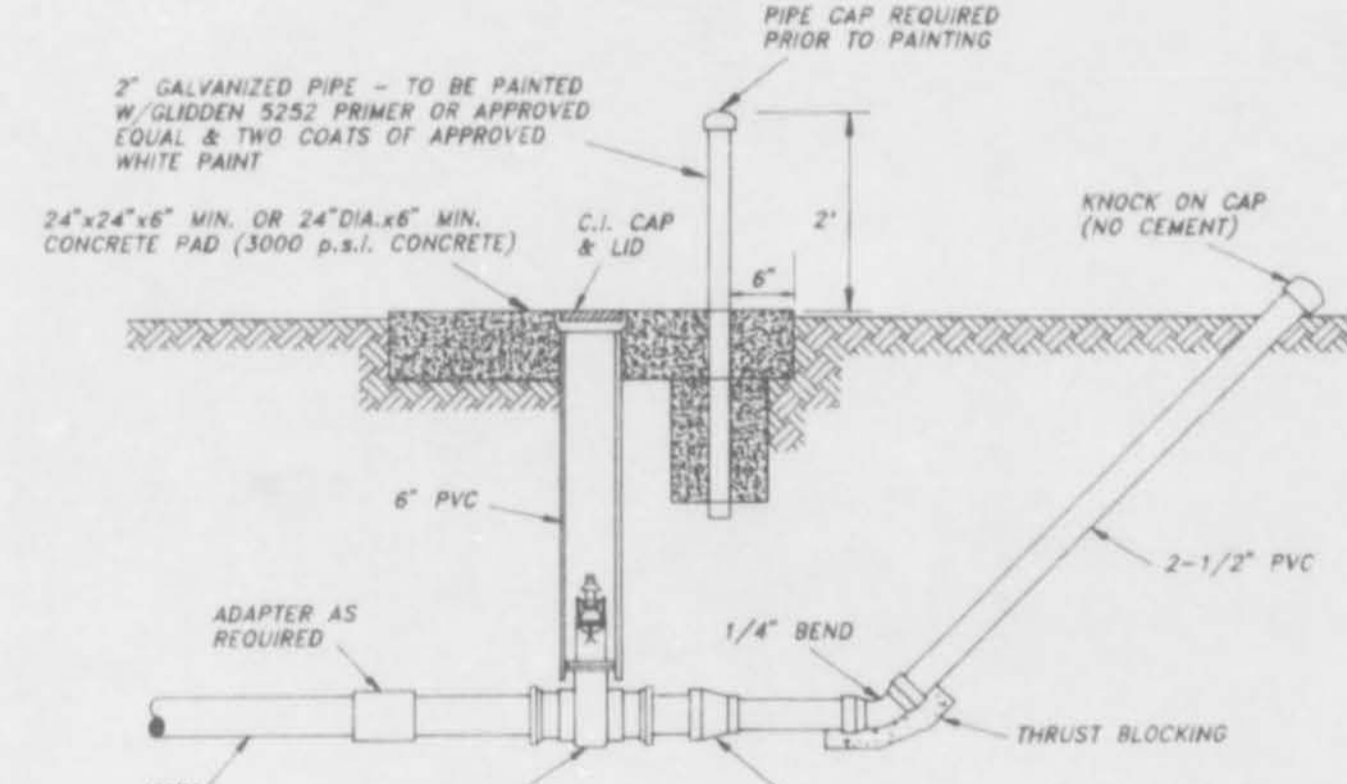
ENCASED CREEK CROSSING



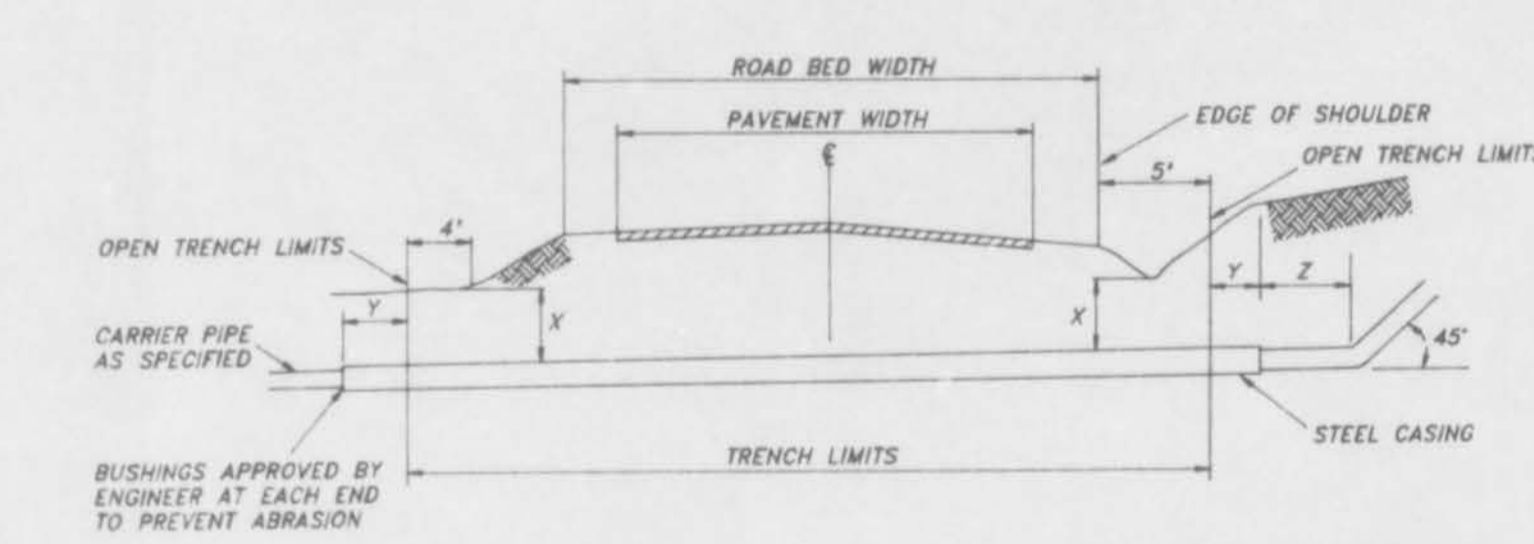
TYPE A: 1-1/2" BLOW-OFF VALVE ASSEMBLY



TYPE B: BLOW-OFF VALVE ASSEMBLY



TYPE C: BLOW-OFF VALVE ASSEMBLY



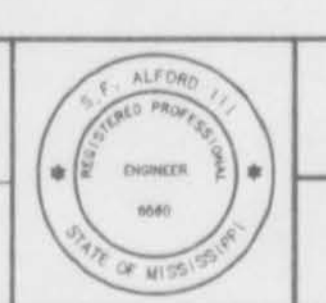
TYPICAL ROAD BORE

SCHEDULE OF DIMENSIONS					
X-ING DESIG.	LINE SIZE	CASING SIZE	1"	1 1/2"	2"
A	3/4"-1"	2"	3"	2"	2"
B	1 1/2"-2 1/2"	4"	3"	2"	4"
C	3"-4"	6"	4"	2"	4"
D	6"	10"	4"	2"	4"
E	8"	12"	4"	2"	4"
F	10"	14"	4"	2"	4"

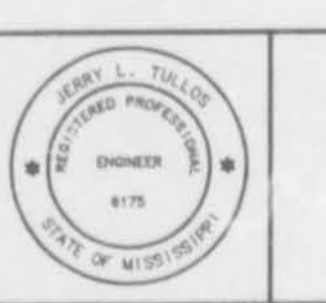
NOTES: 1. VOID BETWEEN SPECIFIED PIPE & STEEL CASING SHALL BE SEALED AT EACH END.
2. PIPE SIZES SHOWN ON TABLE ARE BASED ON USE OF SDR 26 PVC, SOLVENT-WELD CARRIER PIPE.

NO.	DATE	NATURE REVISIONS	BY	APP'D

DESIGNED	DATE
S.F.A.	6/92
DRAWN	SCALE
T.A.H.	NONE



LIVINGSTON ROAD WATER ASSOCIATION, INC.
MADISON COUNTY, MISSISSIPPI
ALFORD ENGINEERING CONSULTING ENGINEERS
JACKSON, MISSISSIPPI



PROJECT NO. 0215.0
WATER DETAILS
FILE NO. L SHEET NO. 4