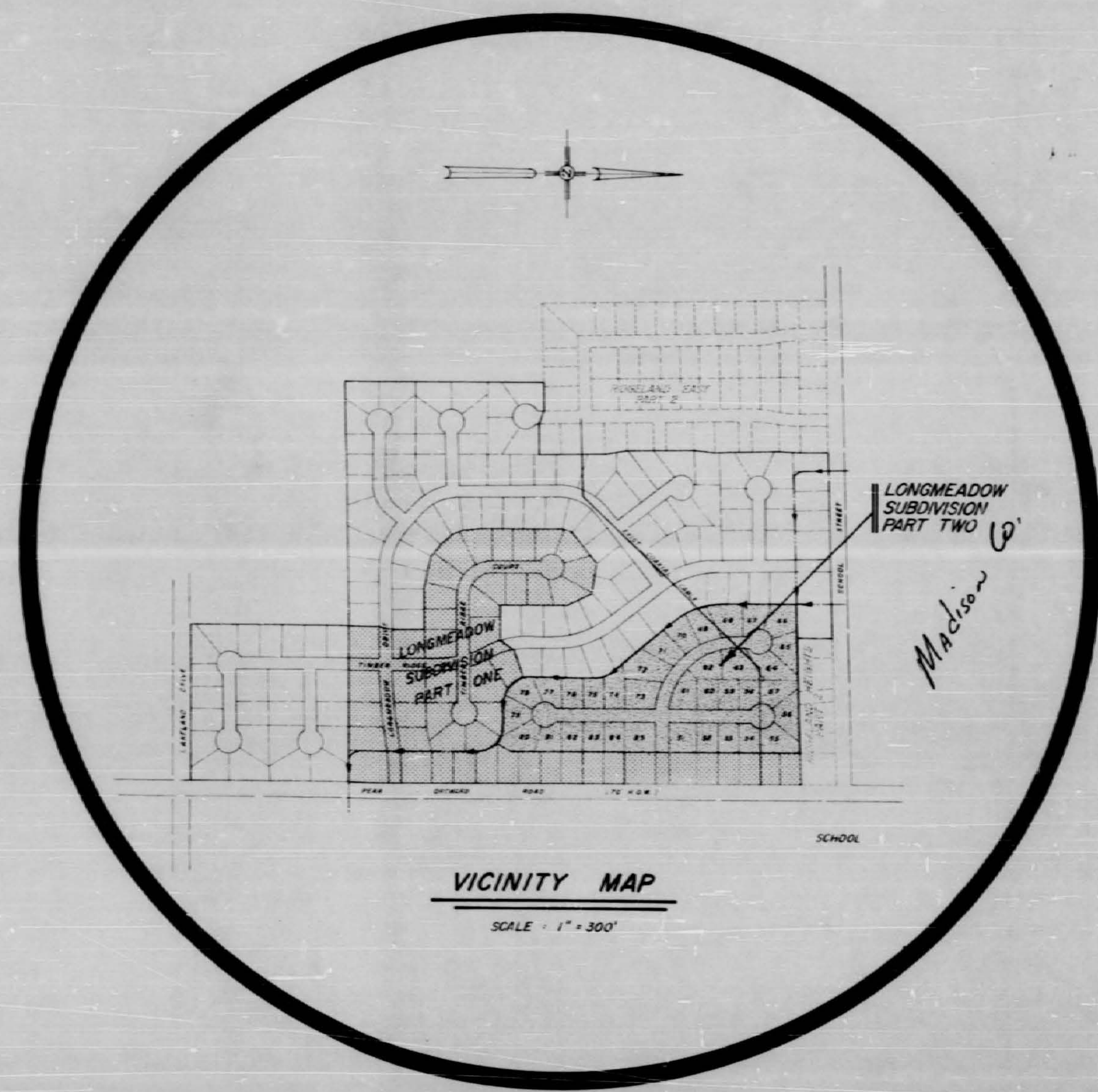


LONGMEADOW SUBDIVISION PART TWO

**BAILEY & BAILEY, INC.
OWNER & DEVELOPER**

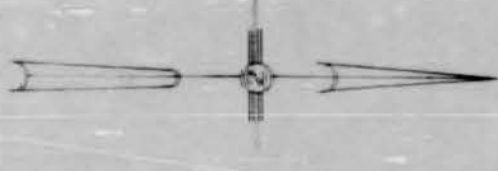
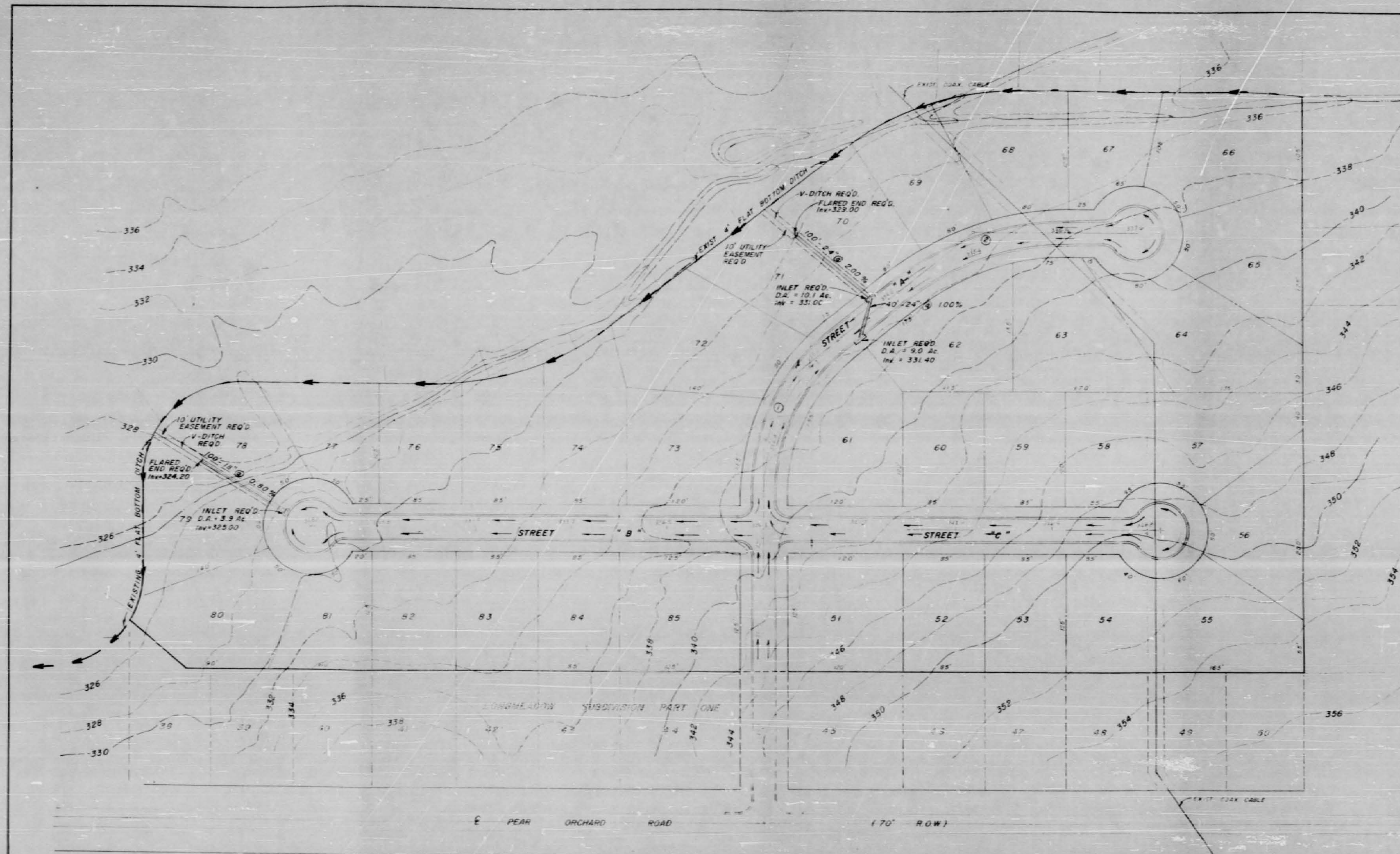


CONTENTS

SHEET	DESCRIPTION
1	FRONT SHEET
2	LOT LAYOUT & DRAINAGE
3	WATER & SEWER LAYOUT
4-5	PLAN & PROFILE SHEETS
6	CONSTRUCTION DETAILS FOR WATER DISTRIBUTION SYSTEM
7	CONSTRUCTION DETAILS FOR SEWER APPURTENANCES
8	STANDARD STORM SEWER APPURTENANCES

APPROVED 8-31-77
Bill Wall
BUREAU OF ENVIRONMENTAL HEALTH
MISSISSIPPI STATE BOARD OF HEALTH

3223
**LESTER ENGINEERING CO.
JACKSON, MISS.**



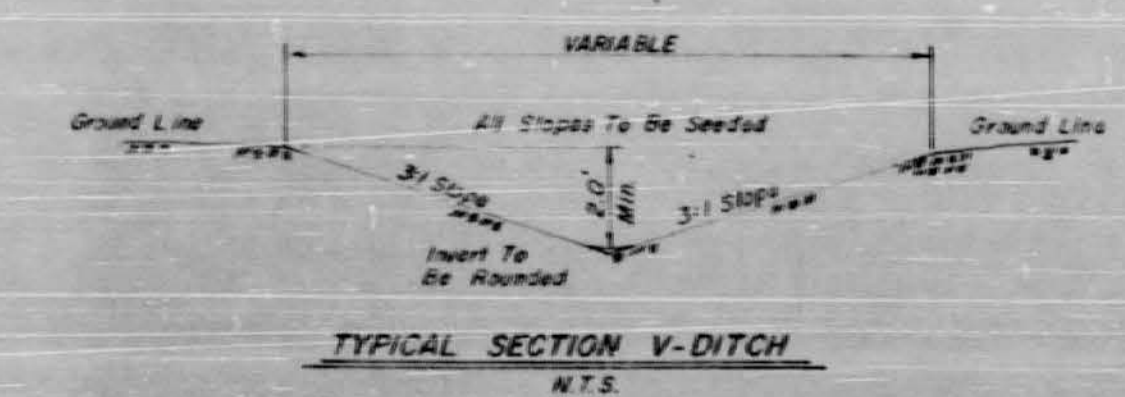
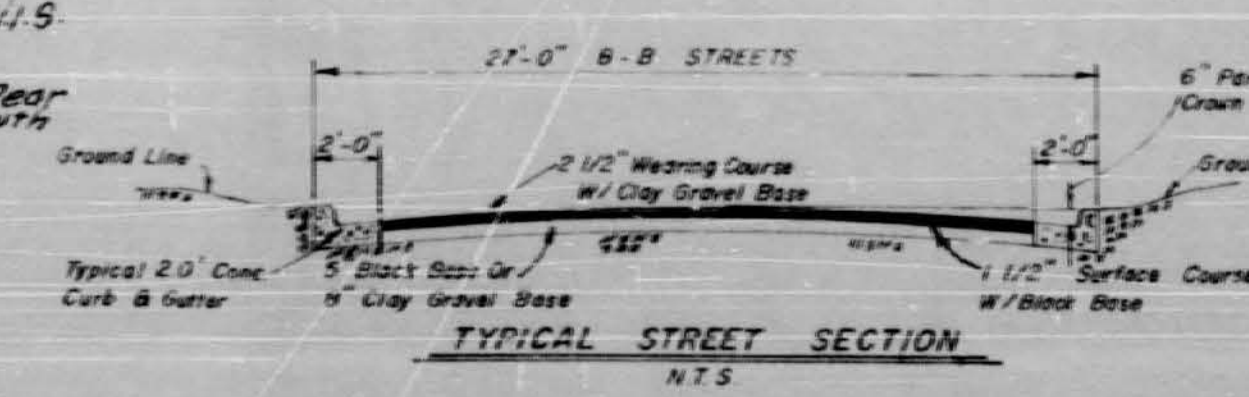
CURVE DATA

①	$\Delta = 51^{\circ}30'$
	$D = 27636.203'$
	$T = 100.00'$
	$L = 186.35'$
	$R = 207.32'$
	$PC = 3+45.00$
	$PI = 4+45.00$
	$PT = 5+31.35$
②	$\Delta = 38^{\circ}30'$
	$D = 20008.582'$
	$T = 100.00'$
	$L = 192.42'$
	$R = 286.36'$
	$PC = 6+12.46$
	$PI = 7+12.46$
	$PT = 8+04.88$

- NOTES:**
1. LOT DIMENSIONS SUBJECT TO FIELD SURVEY
 2. STORM SEWER PIPING METHOD TO BE DETERMINED BY THE ENGINEER OR OWNER
 3. ALL DITCHES TO HAVE 2% SLOPE
 4. FLARED END SECTION TO BE USED FOR ALL DRAIN PIPES
 5. ALL INLETS TO BE CONSTRUCTED IN ACCORDANCE WITH THE APPLICABLE STANDARD AS SET FORTH BY THE ENGINEER OR OWNER
 6. ALL RADIUS ON CURB & GUTTER INTERSECTIONS TO BE 200'
 7. ALL STREETS TO HAVE 50' R.O.W.

337.09 415
 Hackberry
 S.D. & On Pear
 Orchard Road 250' South
 of School

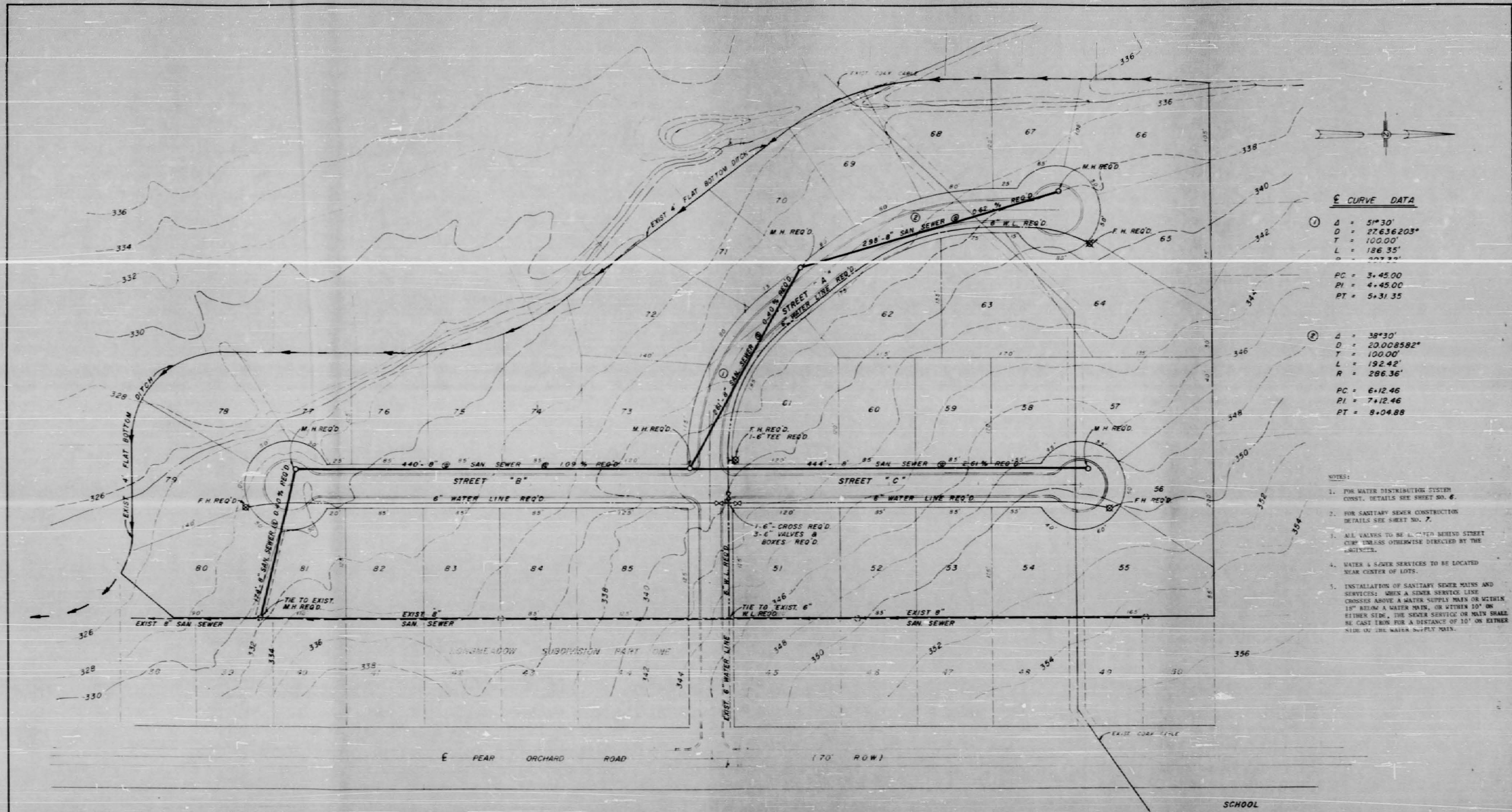
H 115



DESIGNED: T.B.	SCALE: 1" = 50'
DRAWN: B.N.R.	DRWG. NO: 73-232
APPROVED:	
DATE: JULY 76	
REV. DATE:	NATURE OF REVISION
NO.:	BY: CHKD/APPD

LESTER ENGINEERING COMPANY	
CONSULTING ENGINEERS	
JACKSON, MISSISSIPPI	
LONGMEADOW SUBDIVISION	SHEET NO.
PART TWO	2
LOT LAYOUT & DRAINAGE	

JOB NO. 75-252-2
 SHEET NO. 2 OF 6



① CURVE DATA

$\Delta = 51^{\circ}30'$
 $D = 27636.203'$
 $T = 100.00'$
 $L = 126.35'$
 $R = 227.32'$
 $PC = 3+45.00$
 $PI = 4+45.00$
 $PT = 5+31.35$

② CURVE DATA

$\Delta = 38^{\circ}30'$
 $D = 20008.582'$
 $T = 100.00'$
 $L = 132.42'$
 $R = 286.36'$
 $PC = 6+12.46$
 $PI = 7+12.46$
 $PT = 8+04.88$

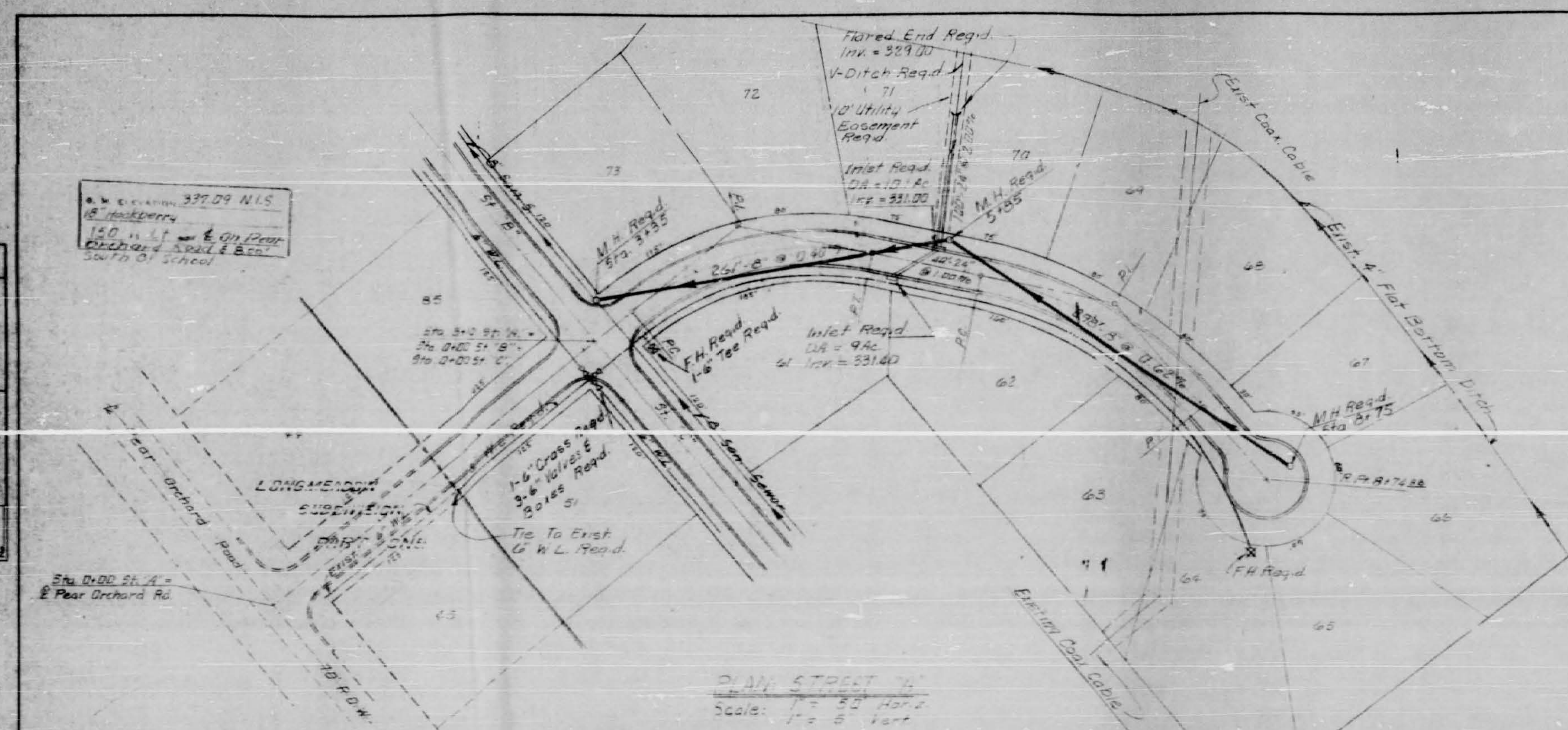
- NOTES:
- FOR WATER DISTRIBUTION SYSTEM CONSTRUCTION SEE SHEET NO. 4.
 - FOR SANITARY SEWER CONSTRUCTION DETAILS SEE SHEET NO. 7.
 - ALL VALVES TO BE LOCATED BEHIND STREET CURB UNLESS OTHERWISE DIRECTED BY THE AGENCIES.
 - WATER & SEWER SERVICES TO BE LOCATED NEAR CENTER OF LOTS.
 - INSTALLATION OF SANITARY SEWER MAINS AND SERVICES: WHEN A SEWER SERVICE LINE CROSSES ABOVE A WATER SUPPLY MAIN OR WITHIN 12" BELOW A WATER MAIN, OR WITHIN 10' ON EITHER SIDE, THE SEWER SERVICE ON MAIN SHALL BE CAST IRON FOR A DISTANCE OF 10' ON EITHER SIDE OF THE WATER SUPPLY MAIN.

137 09 N13
 Hackberry
 50 ft - 1/2 on Pair
 Orchard Road & 2nd St
 Dr. School.

H 116

DESIGNED T.B.	SCALE 1" = 20'	LESTER ENGINEERING COMPANY
DRAWN B.N.R.	DRWG. NO. 74.767	
APPROVED		CONSULTING ENGINEERS
DATE JULY 76		JACKSON, MISSISSIPPI
REV. NO.	DATE	NATURE OF REVISION
		BY CHKD. APPD.
		LONGMEADOW SUBDIVISION
		PART TWO
		WATER AND SEWER LAYOUT
		SHEET NO. 3

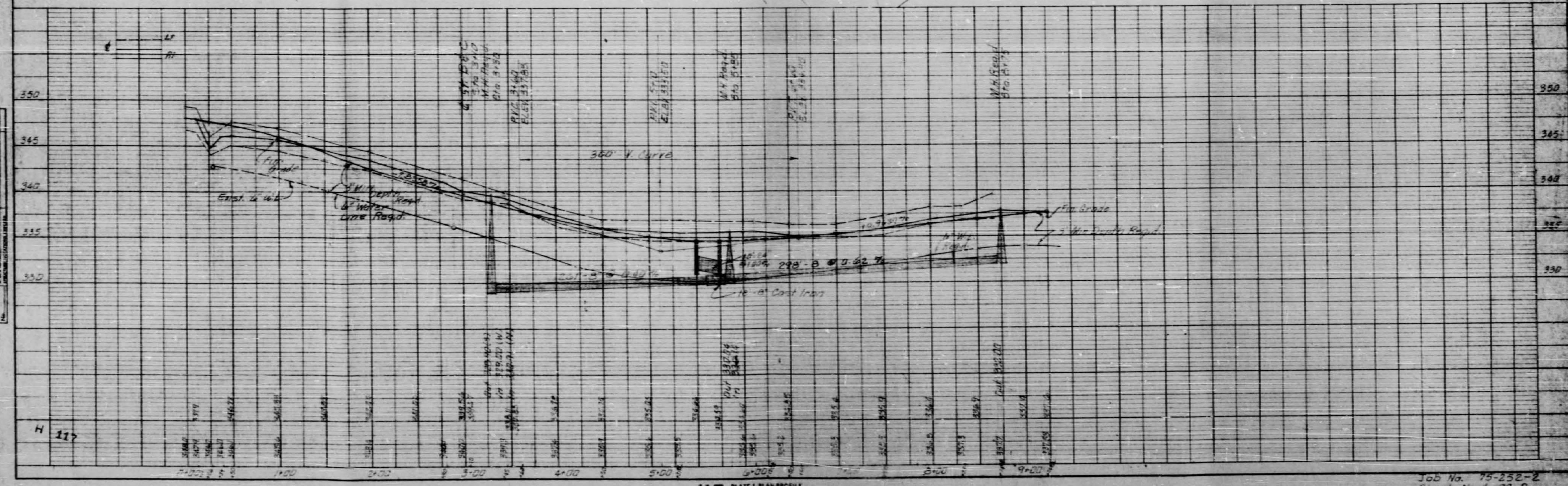
JOB NO. 75-252-2
 SHEET NO. 3 OF 8



Curve Data

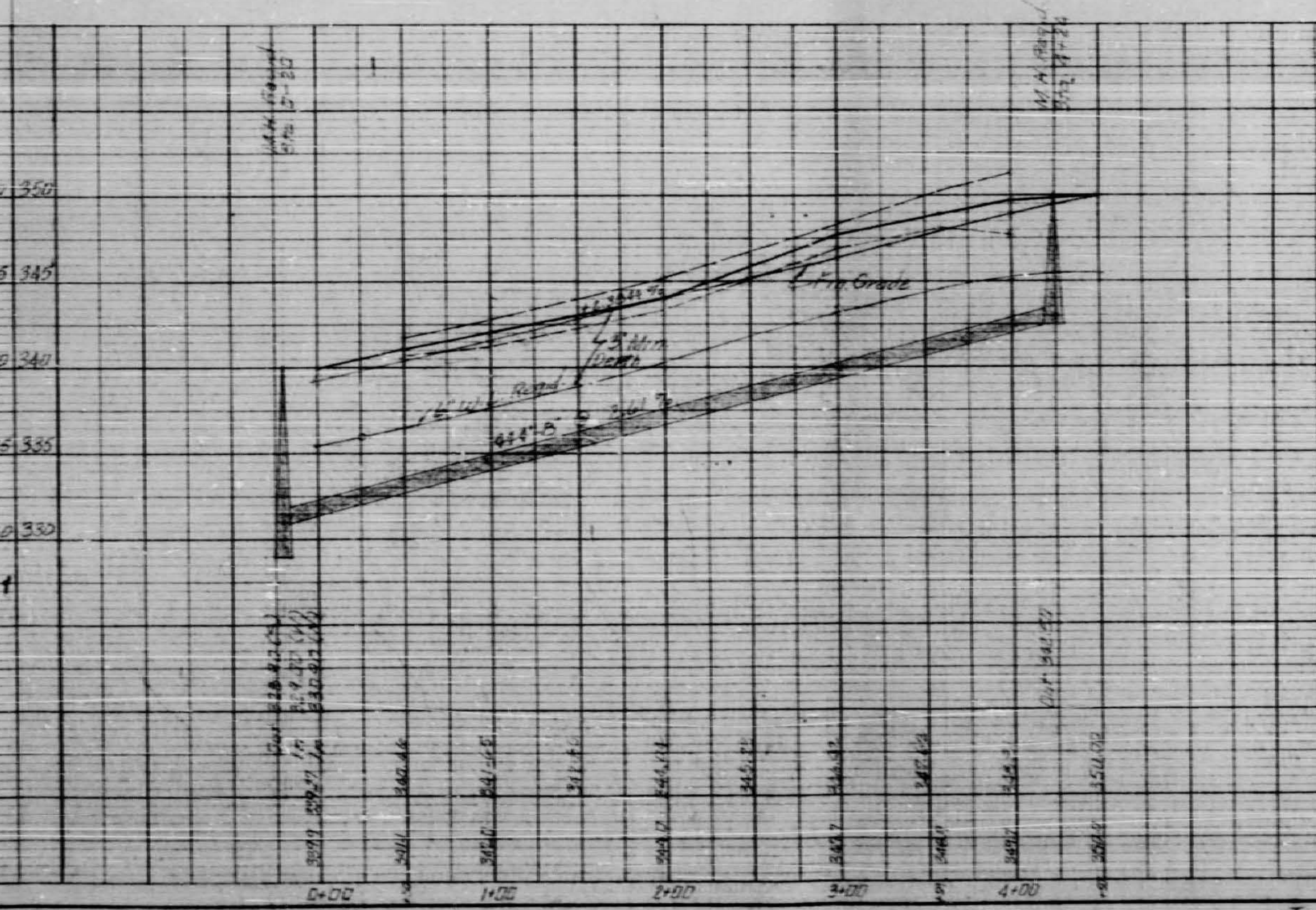
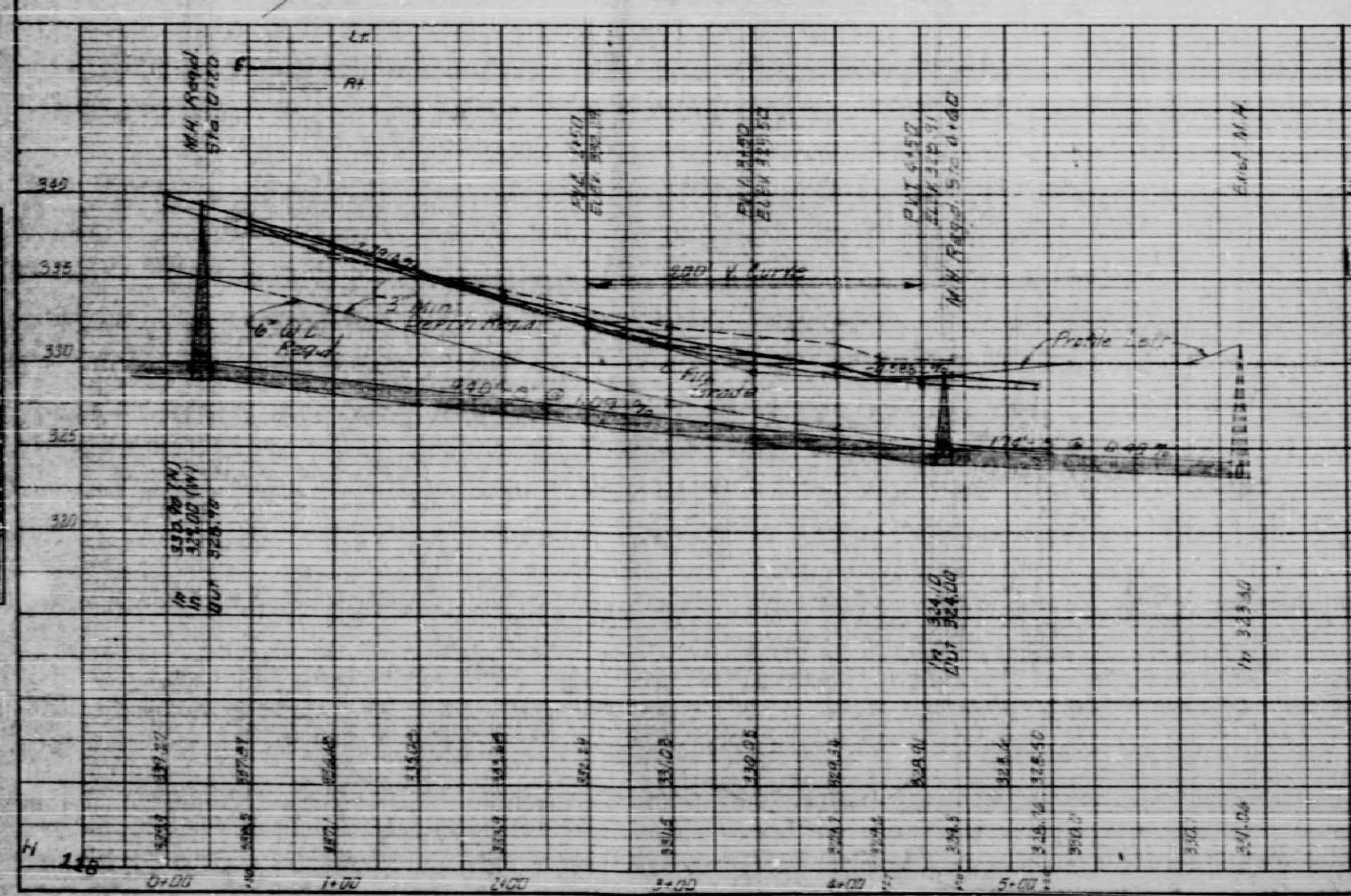
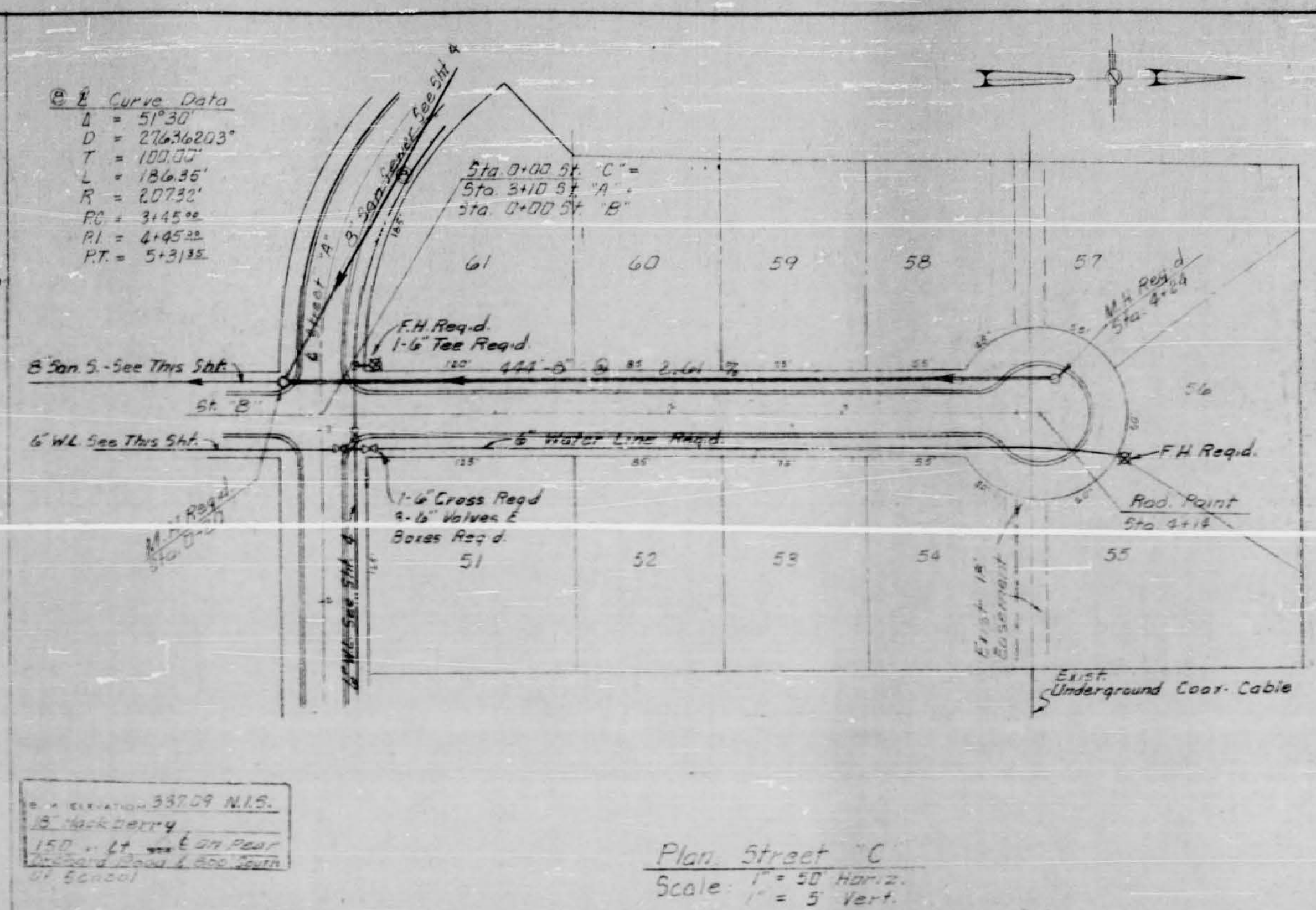
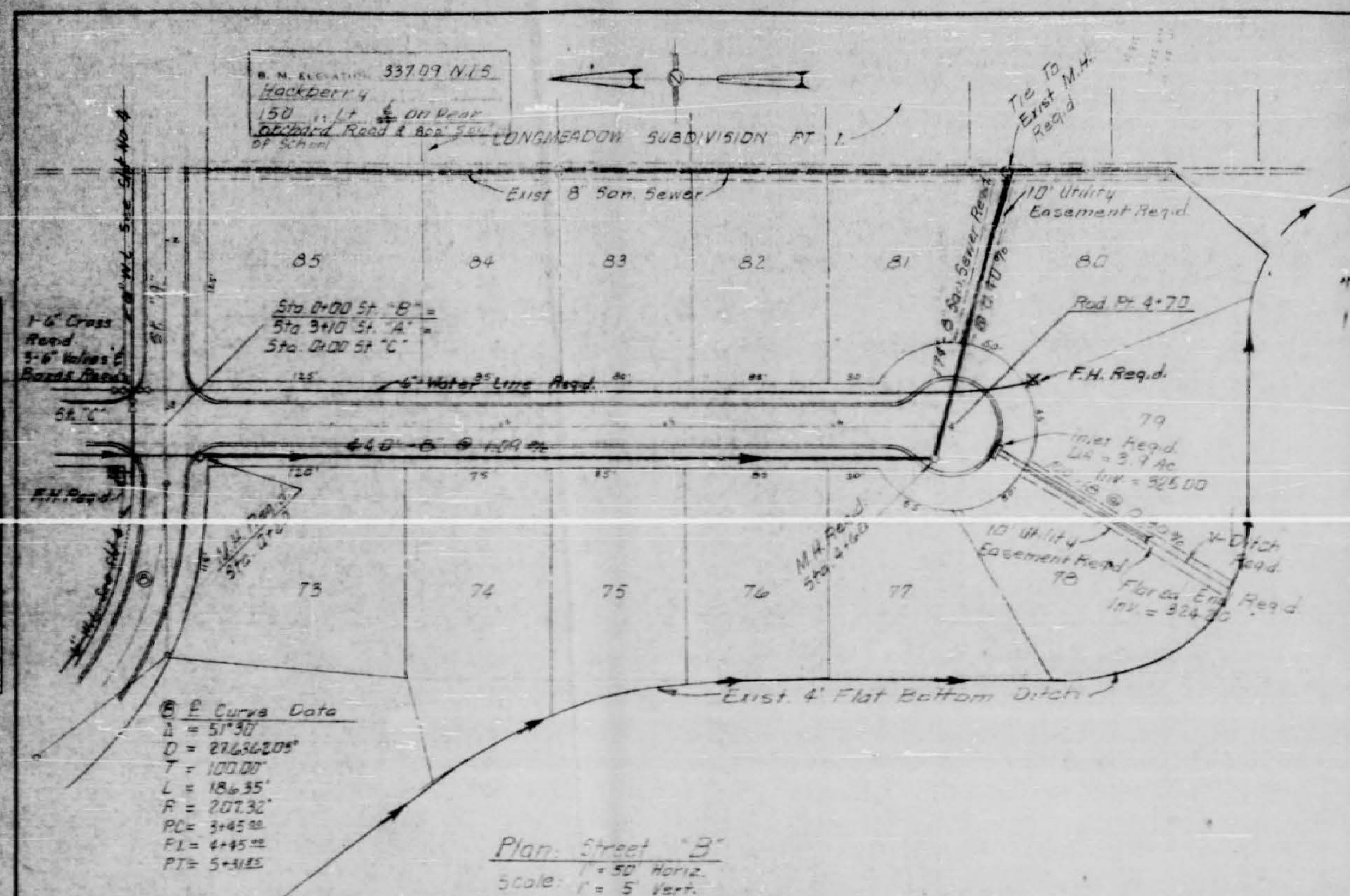
CA = 51°30'	CB = 38°30'
D = 27°42'03"	D = 26°00'00"
T = 100.00'	T = 100.00'
L = 186.95'	L = 192.40'
R = 207.90'	R = 226.50'
PI = 5+48.20	PI = 6+12.66
PT = 4+40.22	PT = 7+12.66
PT = 5+31.85	PT = 8+04.85

PLAN STREET 'A'
Scale: 1" = 50' Horiz
1" = 5' Vert



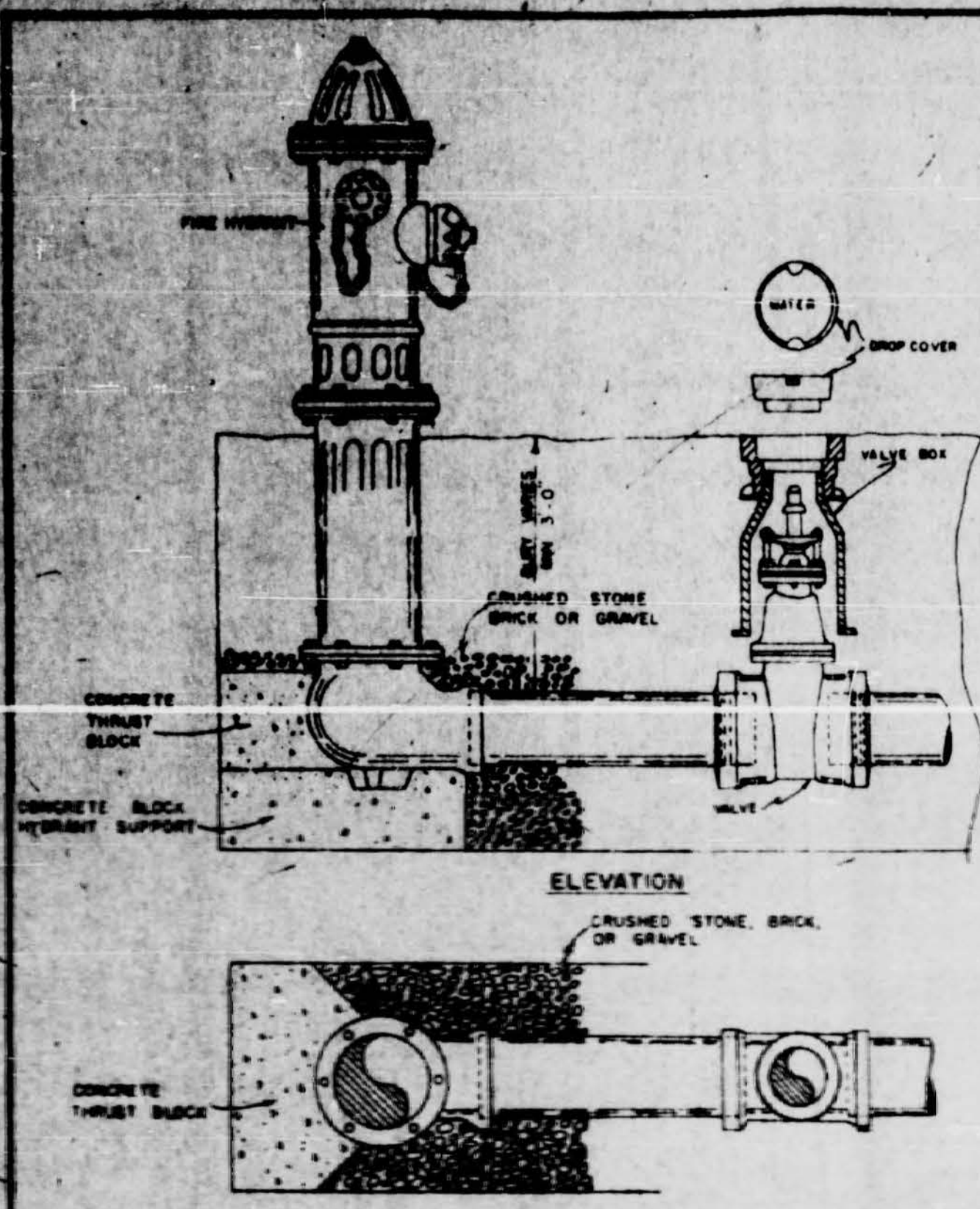
PROFILE
Scale: 1" = 50' Horiz
1" = 5' Vert

Job No. 75-252-2
Sheet No. 4 of 6

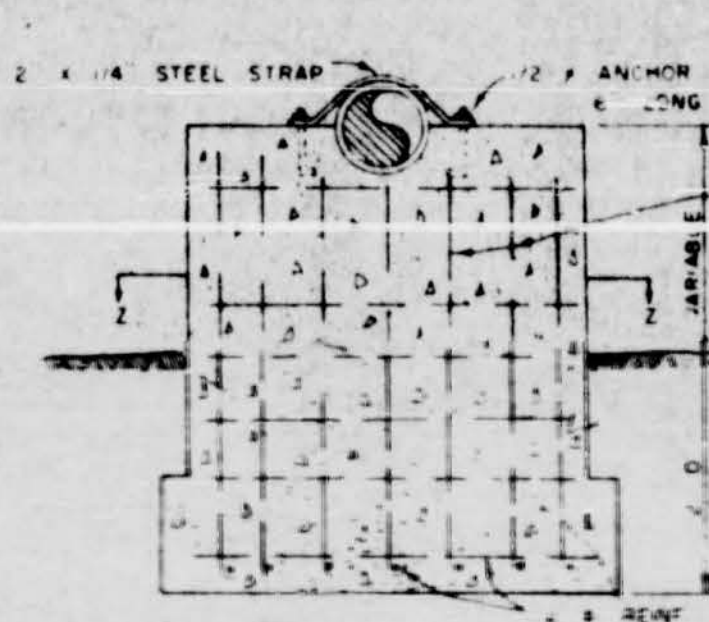
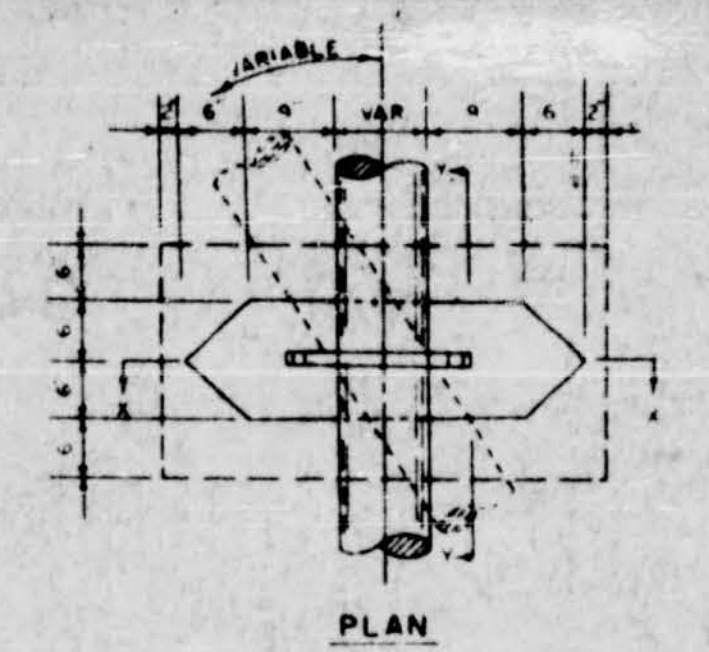


K-E PLATE, PLAN PROFILE
 100% & OVER 10

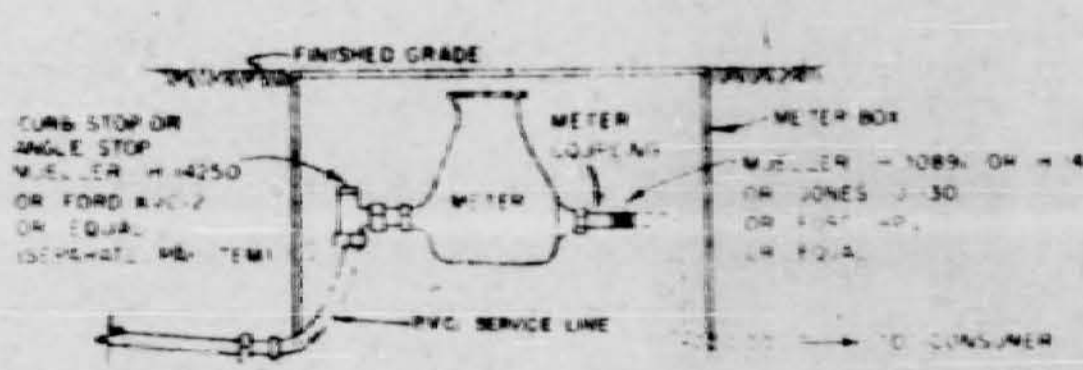
Job No. 75-552-3
 Sheet No. 5 of 6



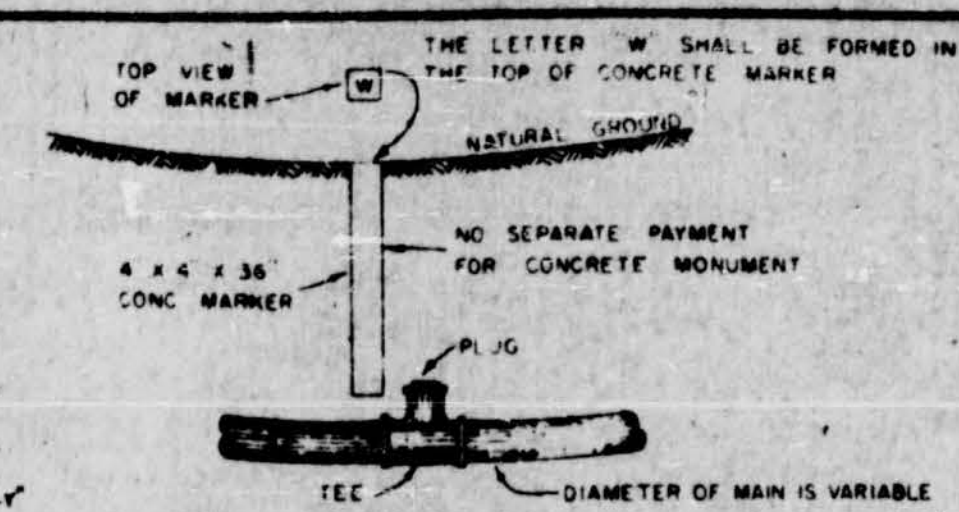
FIRE HYDRANT INSTALLATION DETAILS



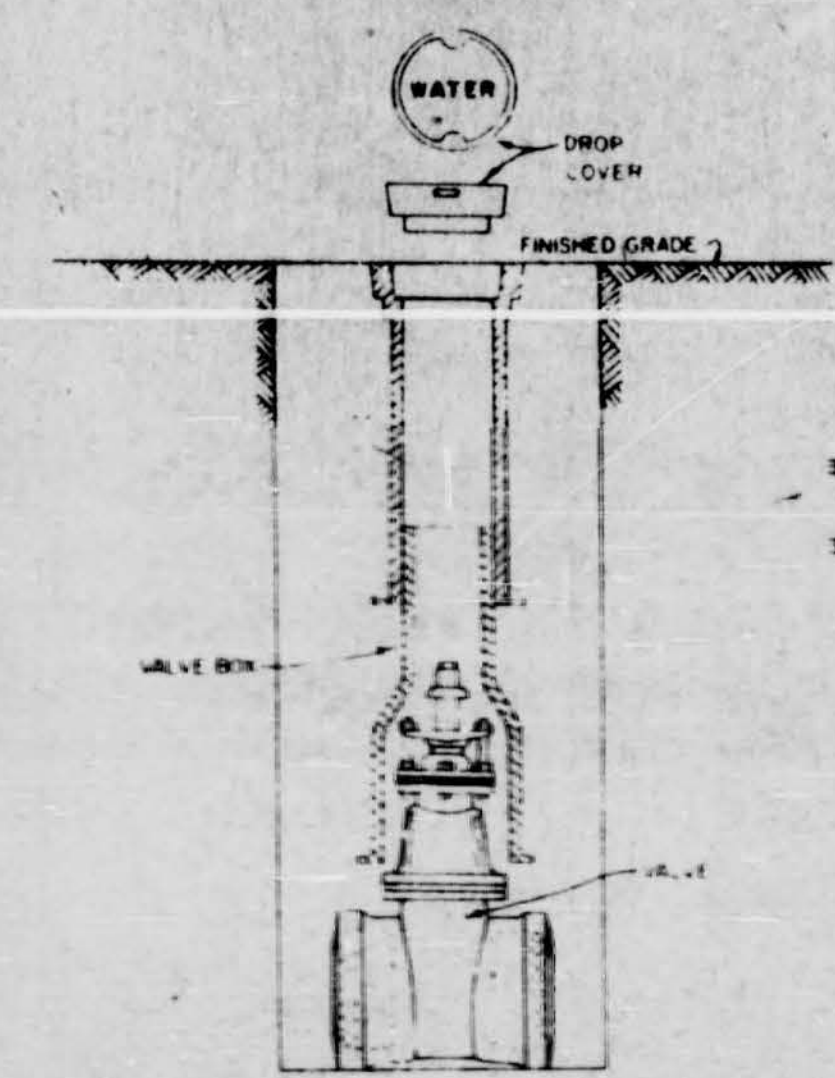
CONCRETE PIER DETAILS



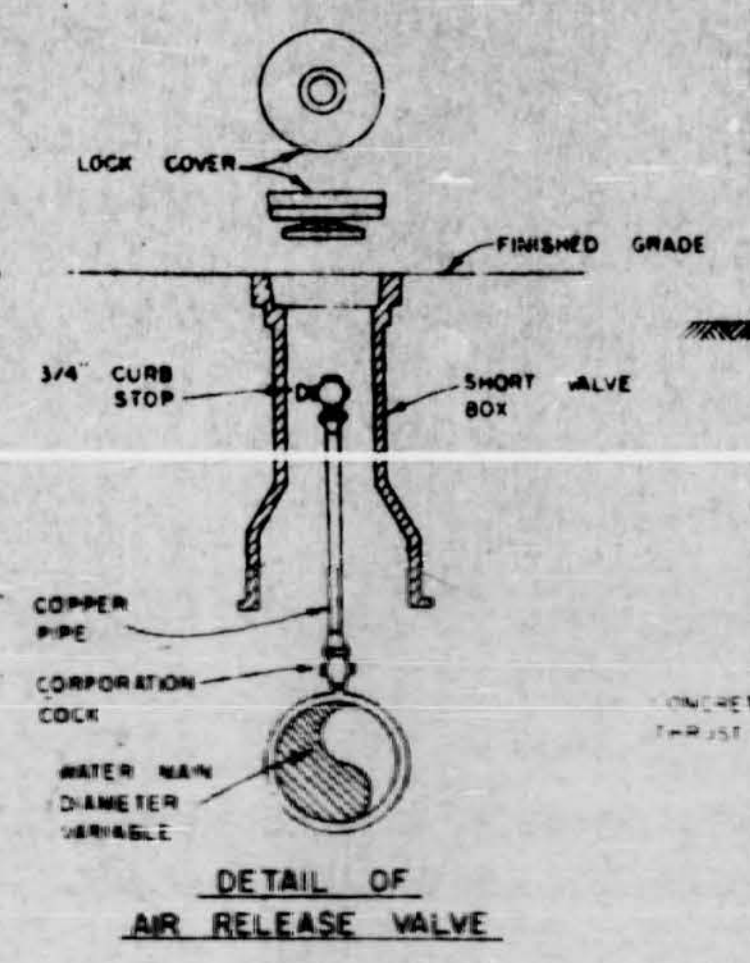
TYPICAL SERVICE ASSEMBLY



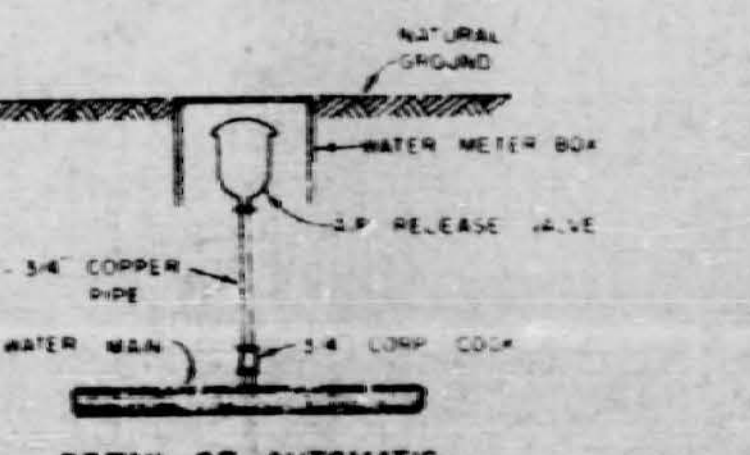
DETAIL OF EMERGENCY DRAIN



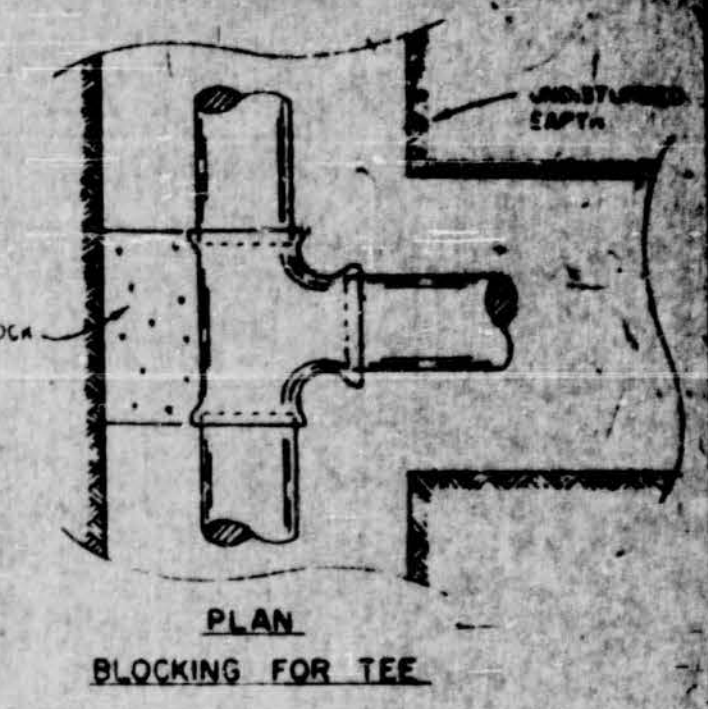
DETAIL OF VALVE AND VALVE BOX INSTALLATION



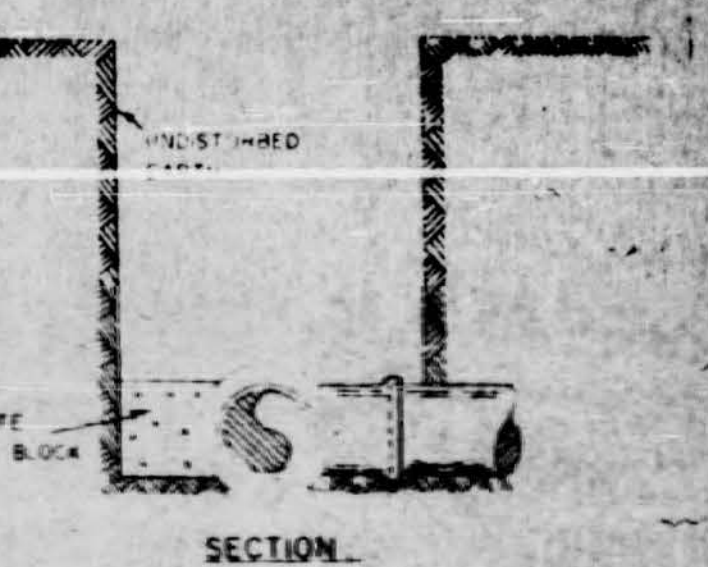
DETAIL OF AIR RELEASE VALVE



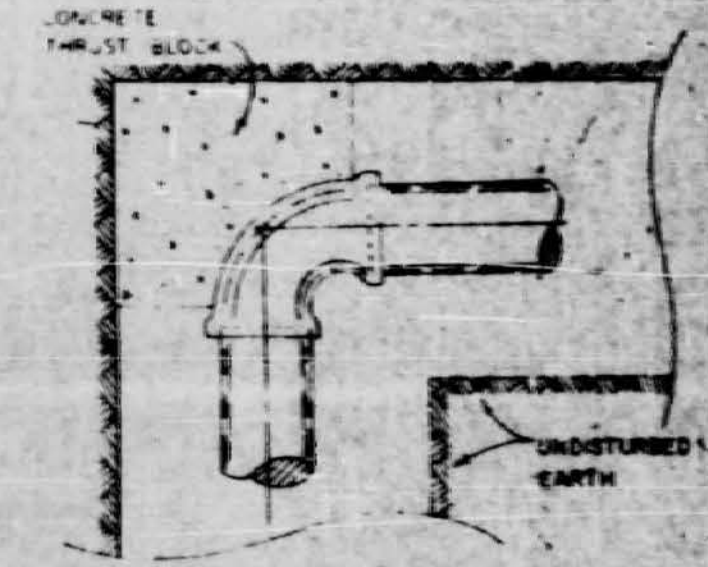
DETAIL OF AUTOMATIC AIR RELEASE VALVE ASSEMBLY



PLAN BLOCKING FOR TEE

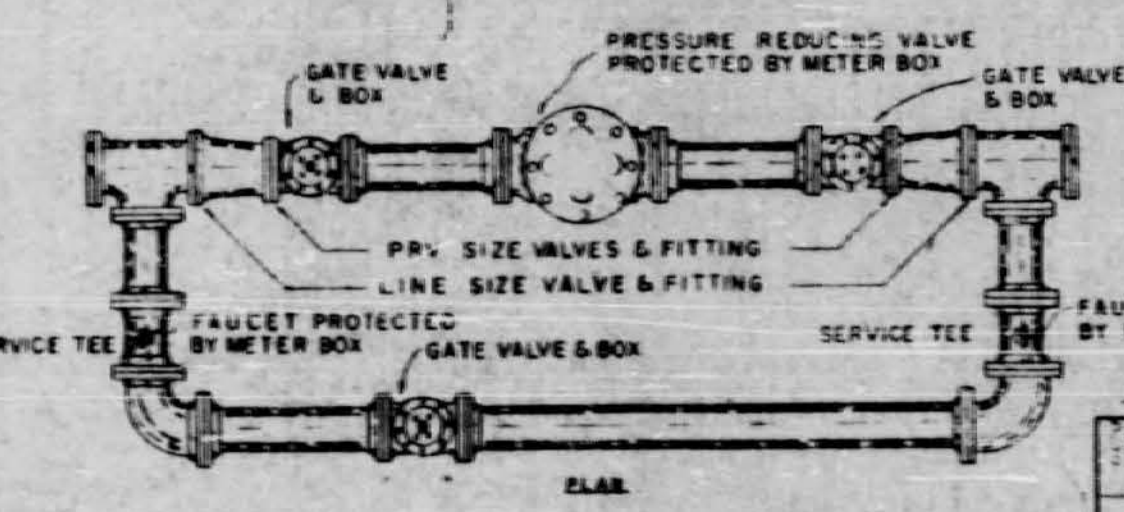


SECTION

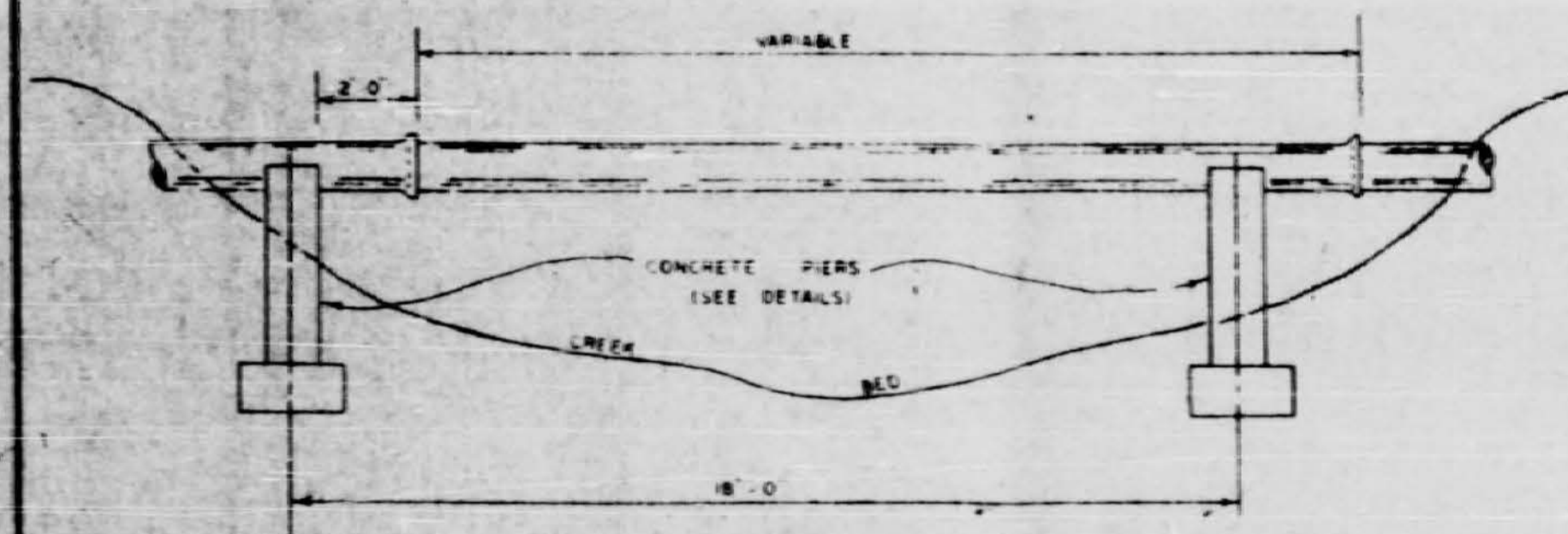


PLAN BLOCKING FOR 90° BENDS

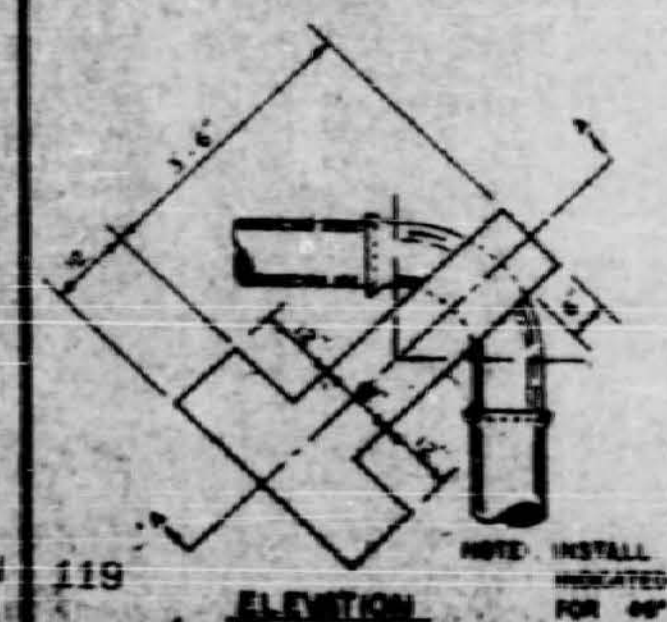
DETAILS OF CONCRETE BLOCKING FOR PIPE AND FITTINGS



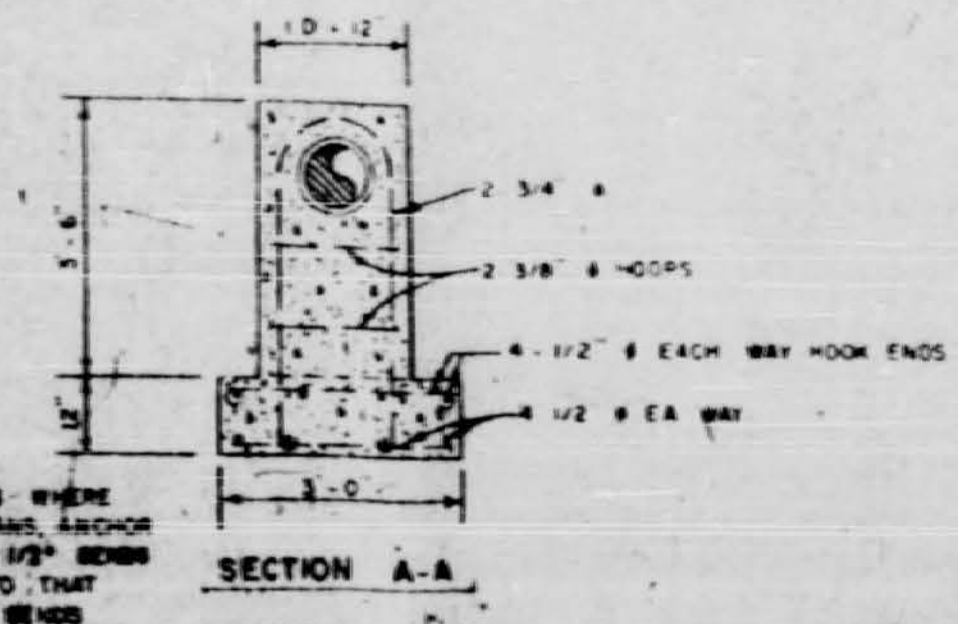
PRESSURE REDUCING VALVE ASSEMBLY



TYPICAL CREEK CROSSING INSTALLATION



DETAILS OF CONCRETE ANCHOR FOR VERTICAL BENDS



SECTION A-A

AREA OF BEARING FACE OF CONCRETE THRUST BLOCKS

PIPE SIZE	1/2" BEND	90° BEND	TEE	CR. BEND	CR. TEE	CR. BEND
1 1/2"	12	12	12	12	12	12
2"	18	18	18	18	18	18
3"	27	27	27	27	27	27
4"	36	36	36	36	36	36
6"	54	54	54	54	54	54
8"	72	72	72	72	72	72
10"	90	90	90	90	90	90
12"	108	108	108	108	108	108
14"	126	126	126	126	126	126
16"	144	144	144	144	144	144
18"	162	162	162	162	162	162
20"	180	180	180	180	180	180
24"	216	216	216	216	216	216

REVISIONS

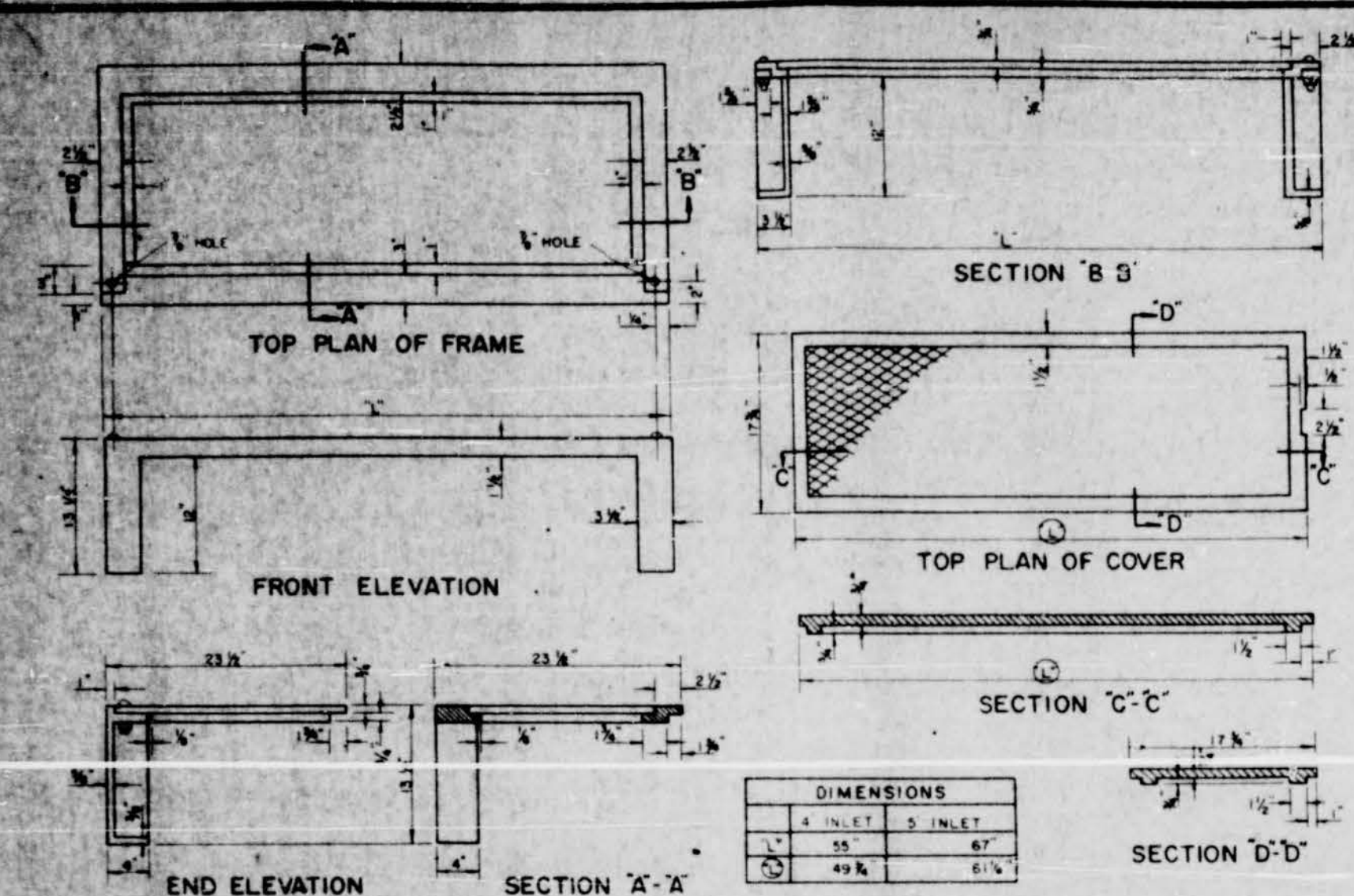
NO.	DATE	DESCRIPTION	BY	CHKD.	APP.

LESTER ENGINEERING COMPANY
CONSULTING ENGINEERS
ANN ARBOR, MICHIGAN

CONSTRUCTION DETAILS WATER DISTRIBUTION SYSTEM

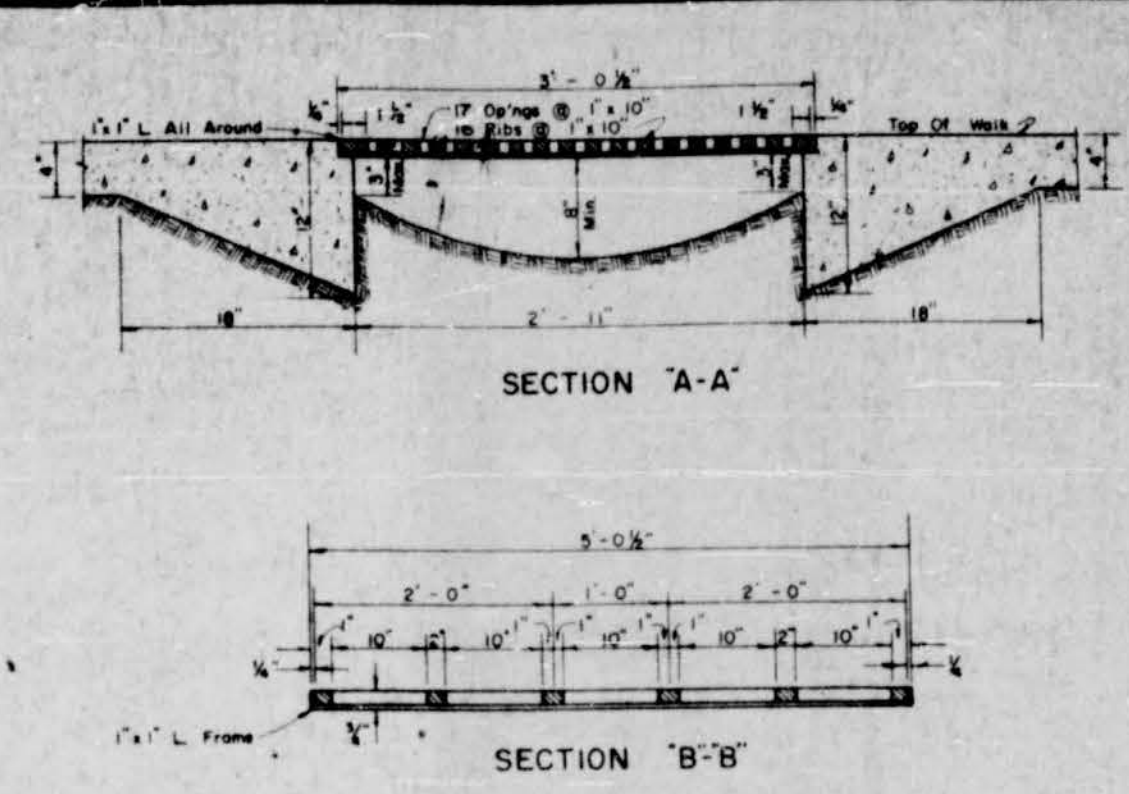
6

JOB NO. 75-252-2
SHEET NO. 6 OF 8

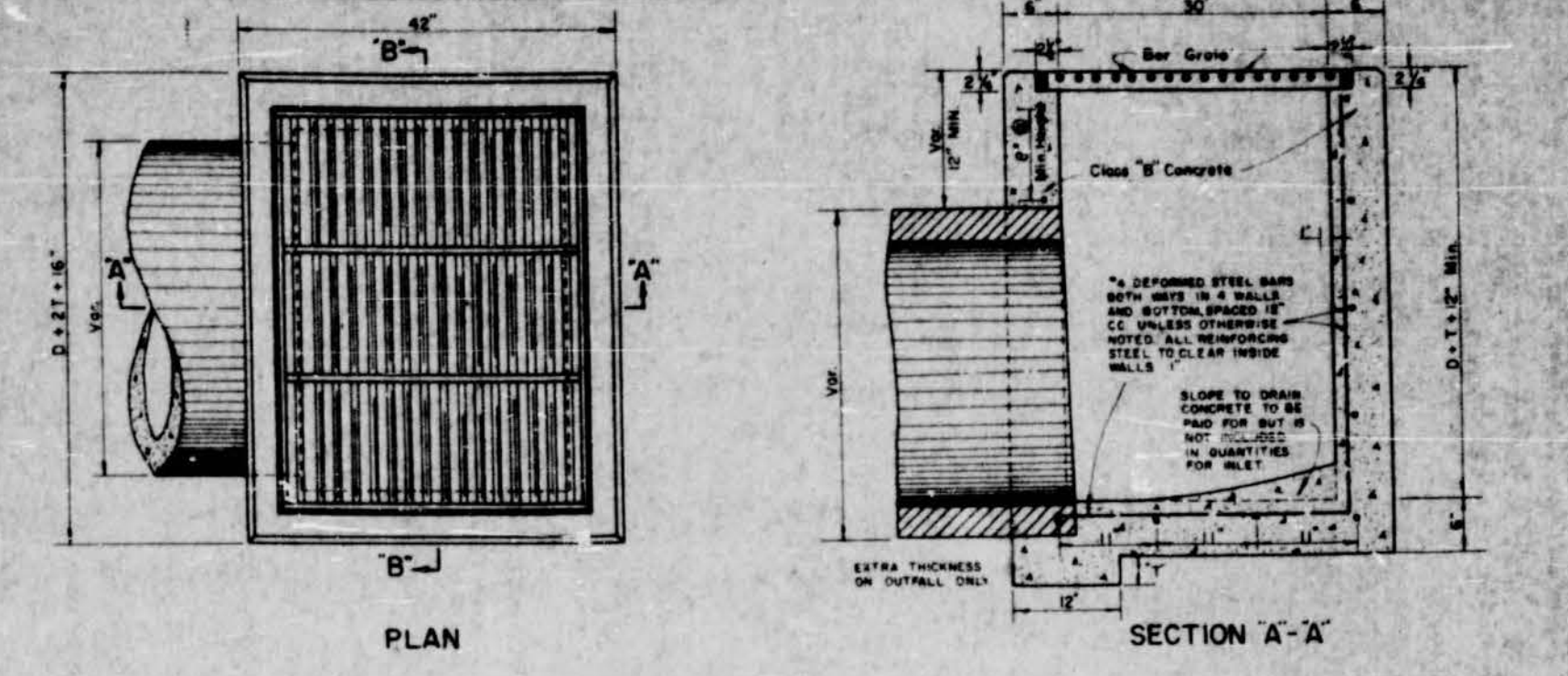


CURB INLET CASTING DETAILS (NON-TRAFFIC)

DIMENSIONS	
1	55
2	49 1/2
3	67
4	61 1/2

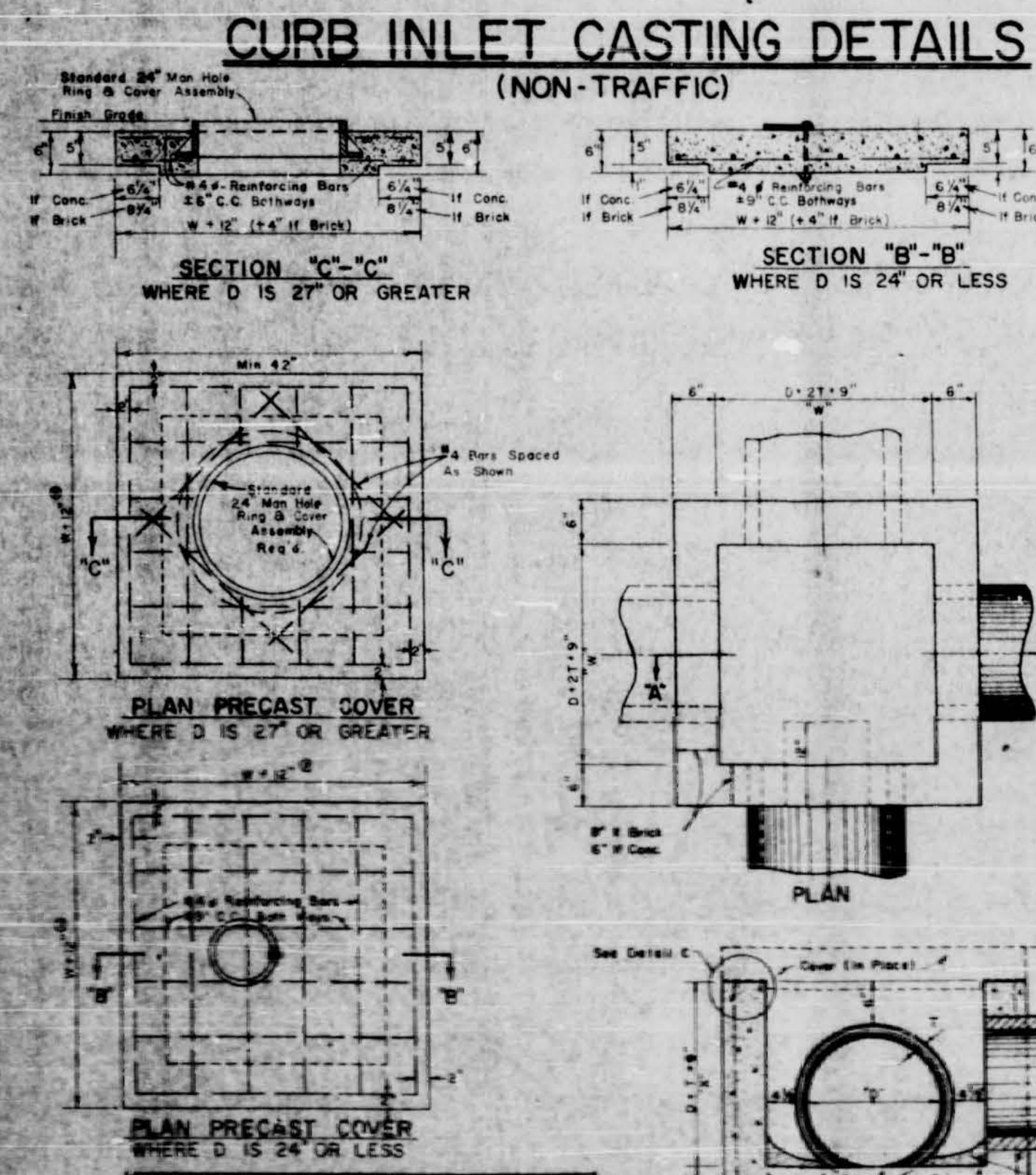


WALK GRATING DETAILS (NON-TRAFFIC)



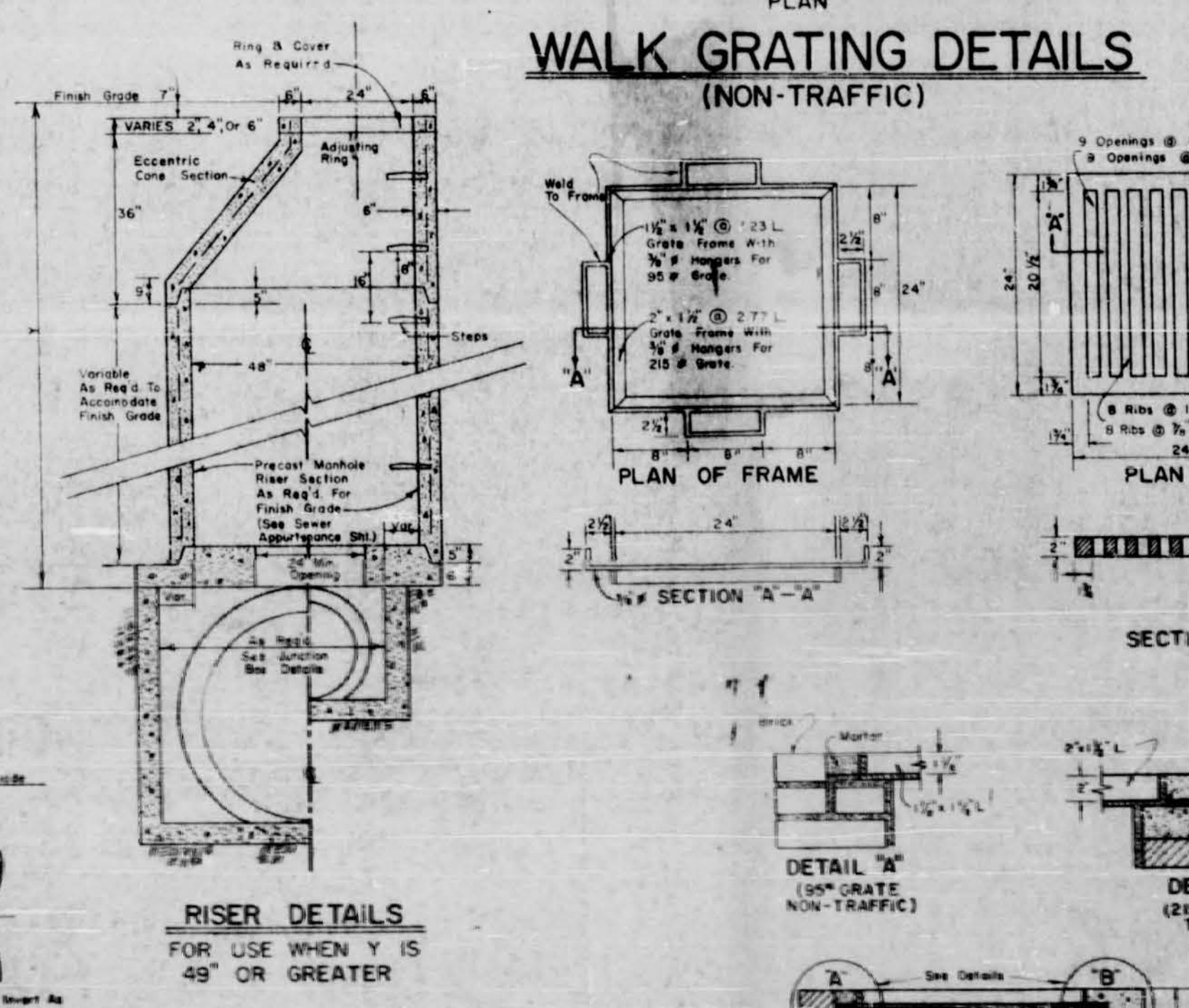
OPEN AREA INLET DETAILS (NON-TRAFFIC)

SECTION NO.	QUANTITIES FOR GRATE				QUANTITIES & DIM FOR MANHOLE			
	1/4" x 1/4"	1/2" x 1/2"	3/4" x 3/4"	1" x 1"	MANHOLE	DIAMETER	DEPTH	TYPE
1	1	1	1	1	1	1	1	1
2	1	1	1	1	1	1	1	1
3	1	1	1	1	1	1	1	1
4	1	1	1	1	1	1	1	1
5	1	1	1	1	1	1	1	1
6	1	1	1	1	1	1	1	1
7	1	1	1	1	1	1	1	1
8	1	1	1	1	1	1	1	1
9	1	1	1	1	1	1	1	1
10	1	1	1	1	1	1	1	1
11	1	1	1	1	1	1	1	1
12	1	1	1	1	1	1	1	1
13	1	1	1	1	1	1	1	1
14	1	1	1	1	1	1	1	1
15	1	1	1	1	1	1	1	1
16	1	1	1	1	1	1	1	1
17	1	1	1	1	1	1	1	1
18	1	1	1	1	1	1	1	1
19	1	1	1	1	1	1	1	1
20	1	1	1	1	1	1	1	1
21	1	1	1	1	1	1	1	1
22	1	1	1	1	1	1	1	1
23	1	1	1	1	1	1	1	1
24	1	1	1	1	1	1	1	1
25	1	1	1	1	1	1	1	1
26	1	1	1	1	1	1	1	1
27	1	1	1	1	1	1	1	1
28	1	1	1	1	1	1	1	1
29	1	1	1	1	1	1	1	1
30	1	1	1	1	1	1	1	1
31	1	1	1	1	1	1	1	1
32	1	1	1	1	1	1	1	1
33	1	1	1	1	1	1	1	1
34	1	1	1	1	1	1	1	1
35	1	1	1	1	1	1	1	1
36	1	1	1	1	1	1	1	1
37	1	1	1	1	1	1	1	1
38	1	1	1	1	1	1	1	1
39	1	1	1	1	1	1	1	1
40	1	1	1	1	1	1	1	1
41	1	1	1	1	1	1	1	1
42	1	1	1	1	1	1	1	1
43	1	1	1	1	1	1	1	1
44	1	1	1	1	1	1	1	1
45	1	1	1	1	1	1	1	1
46	1	1	1	1	1	1	1	1
47	1	1	1	1	1	1	1	1
48	1	1	1	1	1	1	1	1
49	1	1	1	1	1	1	1	1
50	1	1	1	1	1	1	1	1
51	1	1	1	1	1	1	1	1
52	1	1	1	1	1	1	1	1
53	1	1	1	1	1	1	1	1
54	1	1	1	1	1	1	1	1
55	1	1	1	1	1	1	1	1
56	1	1	1	1	1	1	1	1
57	1	1	1	1	1	1	1	1
58	1	1	1	1	1	1	1	1
59	1	1	1	1	1	1	1	1
60	1	1	1	1	1	1	1	1
61	1	1	1	1	1	1	1	1
62	1	1	1	1	1	1	1	1
63	1	1	1	1	1	1	1	1
64	1	1	1	1	1	1	1	1
65	1	1	1	1	1	1	1	1
66	1	1	1	1	1	1	1	1
67	1	1	1	1	1	1	1	1
68	1	1	1	1	1	1	1	1
69	1	1	1	1	1	1	1	1
70	1	1	1	1	1	1	1	1
71	1	1	1	1	1	1	1	1
72	1	1	1	1	1	1	1	1
73	1	1	1	1	1	1	1	1
74	1	1	1	1	1	1	1	1
75	1	1	1	1	1	1	1	1
76	1	1	1	1	1	1	1	1
77	1	1	1	1	1	1	1	1
78	1	1	1	1	1	1	1	1
79	1	1	1	1	1	1	1	1
80	1	1	1	1	1	1	1	1
81	1	1	1	1	1	1	1	1
82	1	1	1	1	1	1	1	1
83	1	1	1	1	1	1	1	1
84	1	1	1	1	1	1	1	1
85	1	1	1	1	1	1	1	1
86	1	1	1	1	1	1	1	1
87	1	1	1	1	1	1	1	1
88	1	1	1	1	1	1	1	1
89	1	1	1	1	1	1	1	1
90	1	1	1	1	1	1	1	1
91	1	1	1	1	1	1	1	1
92	1	1	1	1	1	1	1	1
93	1	1	1	1	1	1	1	1
94	1	1	1	1	1	1	1	1
95	1	1	1	1	1	1	1	1
96	1	1	1	1	1	1	1	1
97	1	1	1	1	1	1	1	1
98	1	1	1	1	1	1	1	1
99	1	1	1	1	1	1	1	1
100	1	1	1	1	1	1	1	1

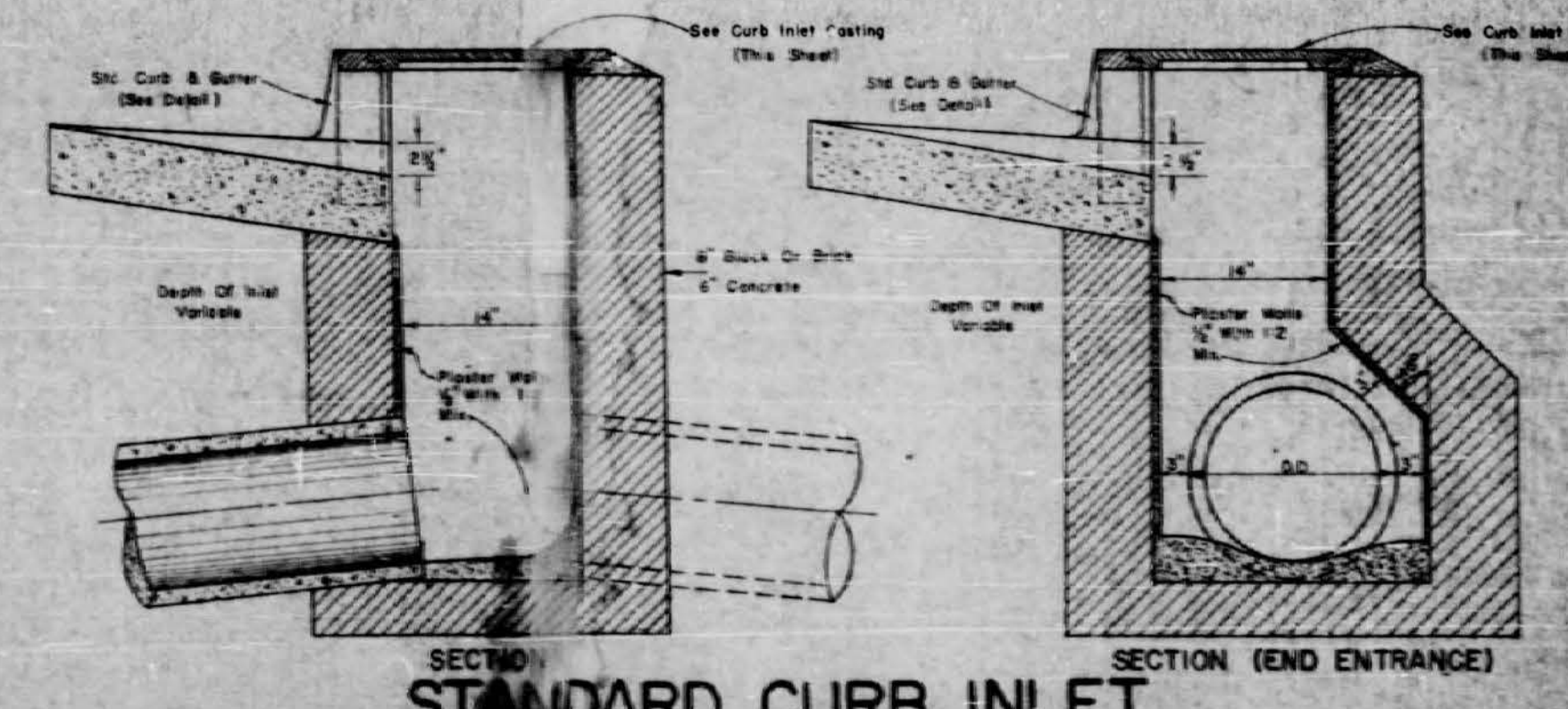


JUNCTION BOX DETAILS

CONCRETE JUNCTION BOX	
1	1
2	1
3	1
4	1
5	1
6	1
7	1
8	1
9	1
10	1
11	1
12	1
13	1
14	1
15	1
16	1
17	1
18	1
19	1
20	1
21	1
22	1
23	1
24	1
25	1
26	1
27	1
28	1
29	1
30	1
31	1
32	1
33	1
34	1
35	1
36	1
37	1
38	1
39	1
40	1
41	1
42	1
43	1
44	1
45	1
46	1
47	1
48	1
49	1
50	1
51	1
52	1
53	1
54	1
55	1
56	1
57	1
58	1
59	1
60	1
61	1
62	1
63	1
64	1
65	1
66	1
67	1
68	1
69	1
70	1
71	1
72	1
73	1
74	1
75	1
76	1
77	1
78	1
79	1
80	1
81	1
82	1
83	1
84	1
85	1
86	1
87	1
88	1
89	1
90	1
91	1
92	1
93	1
94	1
95	1
96	1
97	1
98	1
99	1
100	1



GRATE INLET & COVER DETAILS



STANDARD CURB INLET

DESIGNED		CHECKED		APPROVED		DATE	NATURE OF REVISION	BY	CHKD	APPR	SHEET NO.
1	1	1	1	1	1						

LESTER ENGINEERING COMPANY
CONSULTING ENGINEERS
JACKSON, MISSISSIPPI

STANDARD STORM SEWER APPURTENANCES