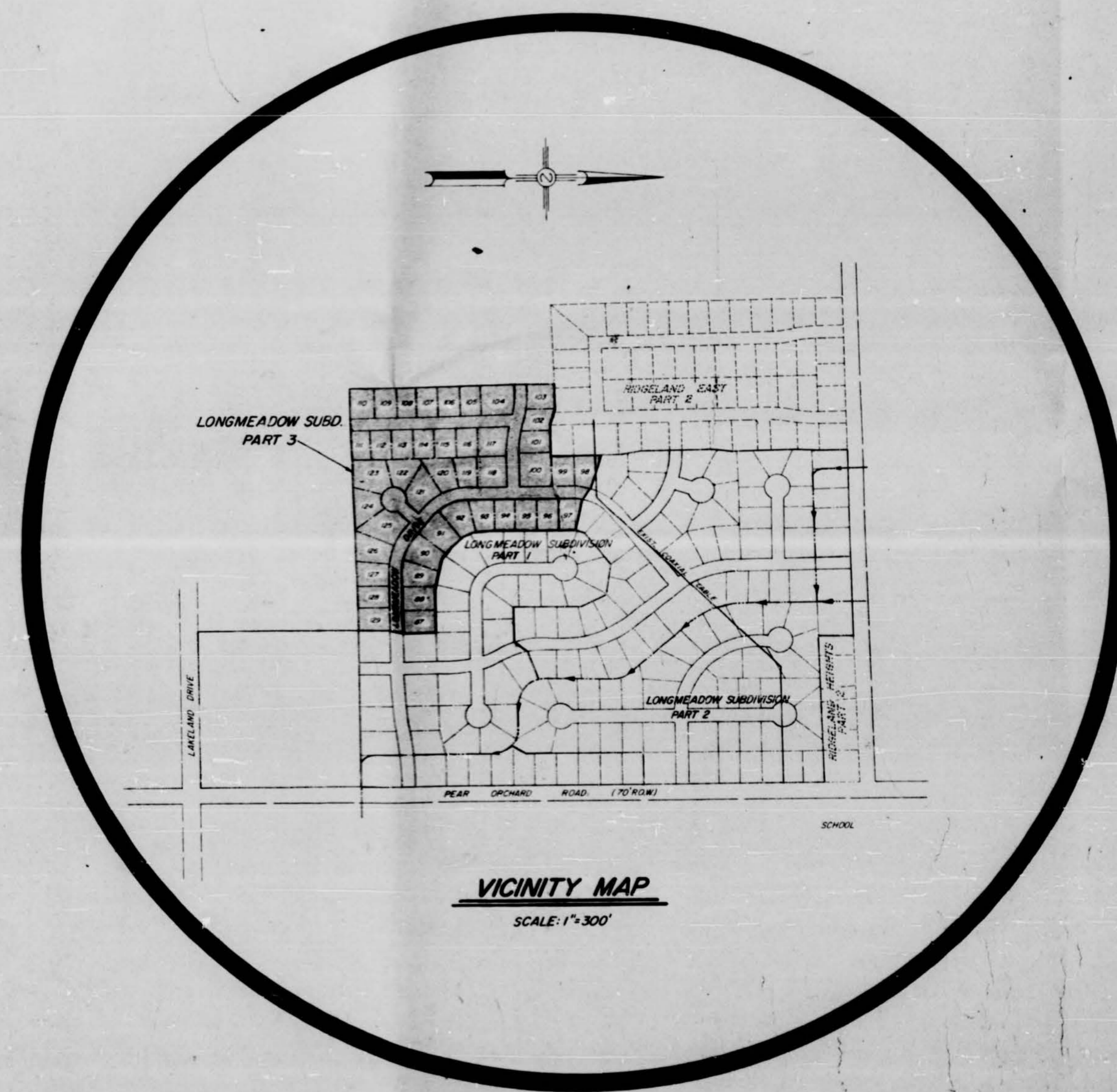


LONGMEADOW SUBDIVISION PART THREE

**BAILEY & BAILEY, INC
OWNER & DEVELOPER**



CONTENTS

SHEET	DESCRIPTION
1	FRONT SHEET
2	LOT LAYOUT & DRAINAGE
3	WATER & SEWER LAYOUT
4-9	PLAN & PROFILE SHEETS
10	PUMP STATION PLAN & DETAIL SHEET
11	CONSTRUCTION DETAILS FOR WATER DISTRIBUTION SYSTEM
12	CONSTRUCTION DETAILS FOR SEWER APPURTENANCES
13	STANDARD STORM SEWER APPURTENANCES

Final Approval
APPROVED 10-11-79
Bill Wall
BUREAU OF ENVIRONMENTAL HEALTH
MISSISSIPPI STATE BOARD OF HEALTH

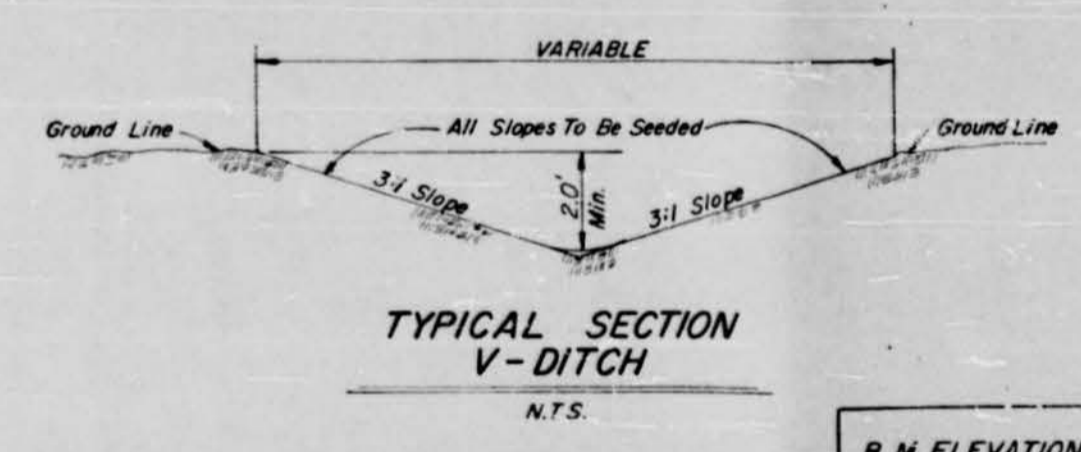
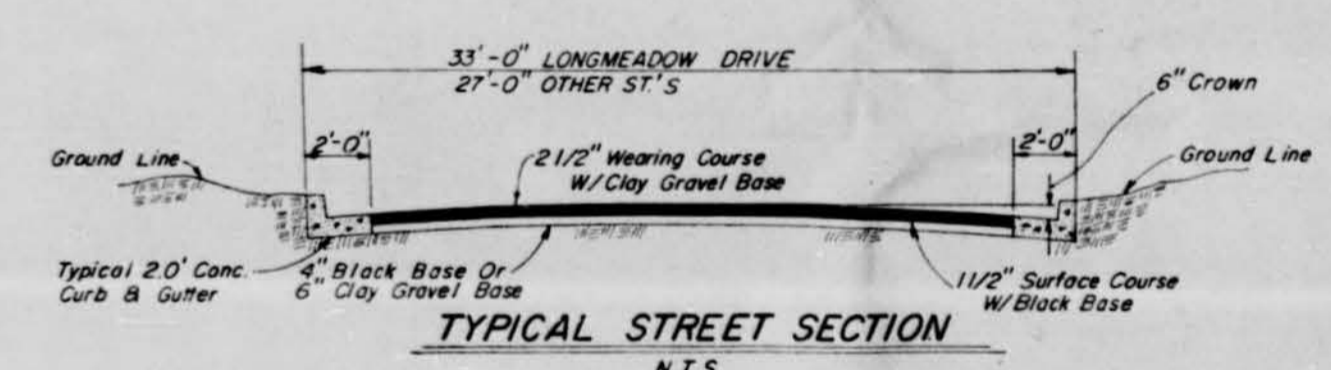
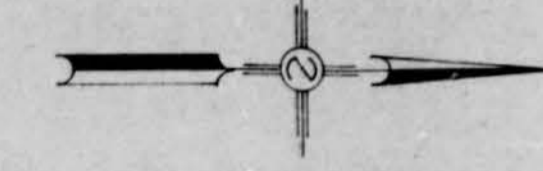
**LESTER ENGINEERING CO.
JACKSON, MISS.**

JOB NO. 75-258-3
SHEET NO. 1 OF 13

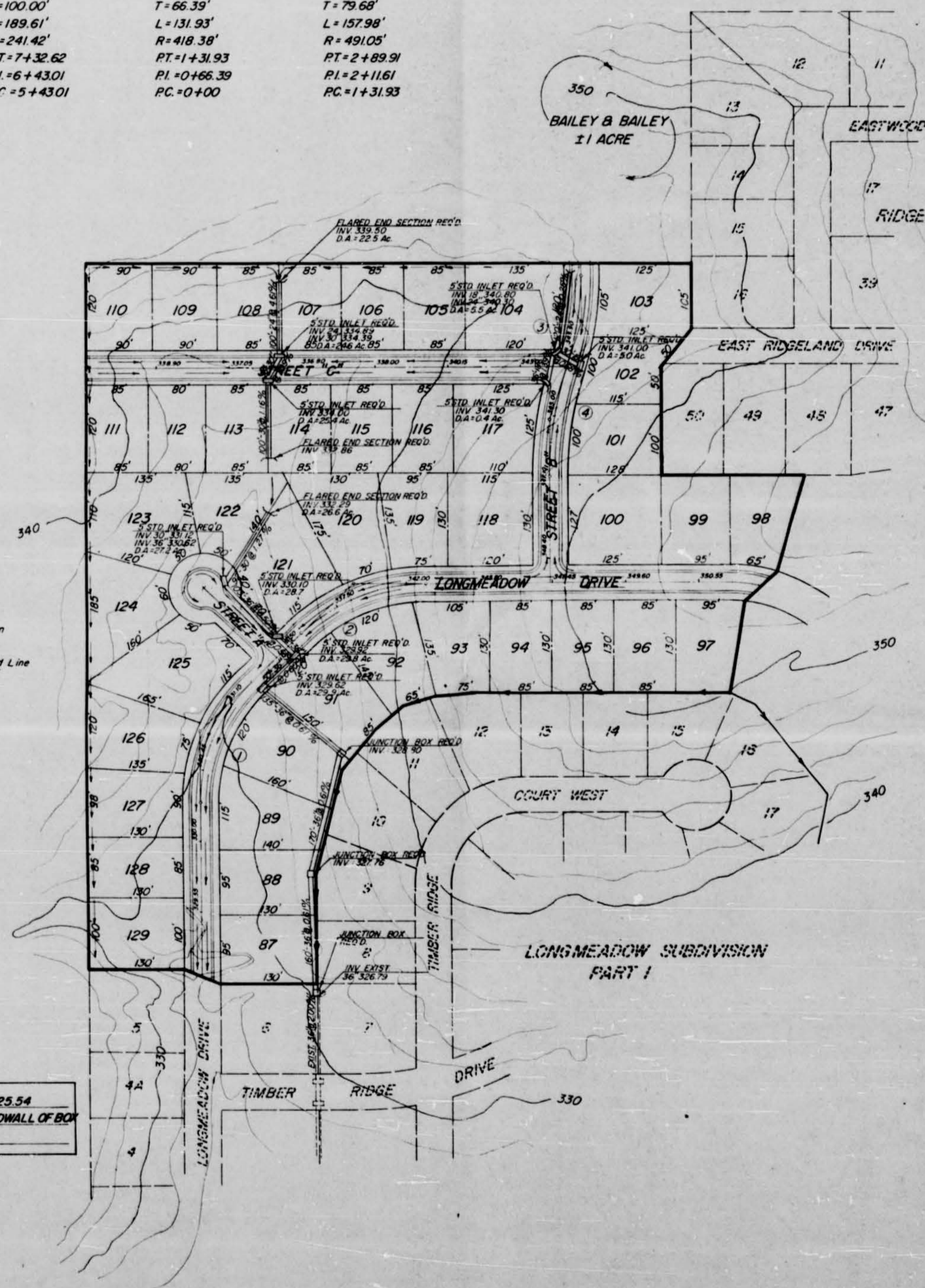
\$872.75

CURVE DATA

1	2	3	4
$\Delta = 45^{\circ}00'$	$\Delta = 45^{\circ}00'$	$\Delta = 18^{\circ}04'$	$\Delta = 18^{\circ}26'$
$D = 237328'$	$D = 237328'$	$D = 136946'$	$D = 116680'$
$T = 100.00'$	$T = 100.00'$	$T = 66.39'$	$T = 79.68'$
$L = 189.61'$	$L = 189.61'$	$L = 31.93'$	$L = 137.98'$
$R = 24142'$	$R = 24142'$	$R = 418.38'$	$R = 49125'$
$PT = 4+46.01'$	$PT = 7+32.62'$	$PT = 1+31.93'$	$PT = 2+89.21'$
$PI = 3+56.40'$	$PI = 6+43.01'$	$PI = 0+66.39'$	$PI = 2+116.11'$
$PC = 2+56.40'$	$PC = 5+43.01'$	$PC = 0+00'$	$PC = 1+31.93'$



B.M. ELEVATION 325.54
HACK SQUARE ON E. HEADWALL OF BOX
FT. STA.



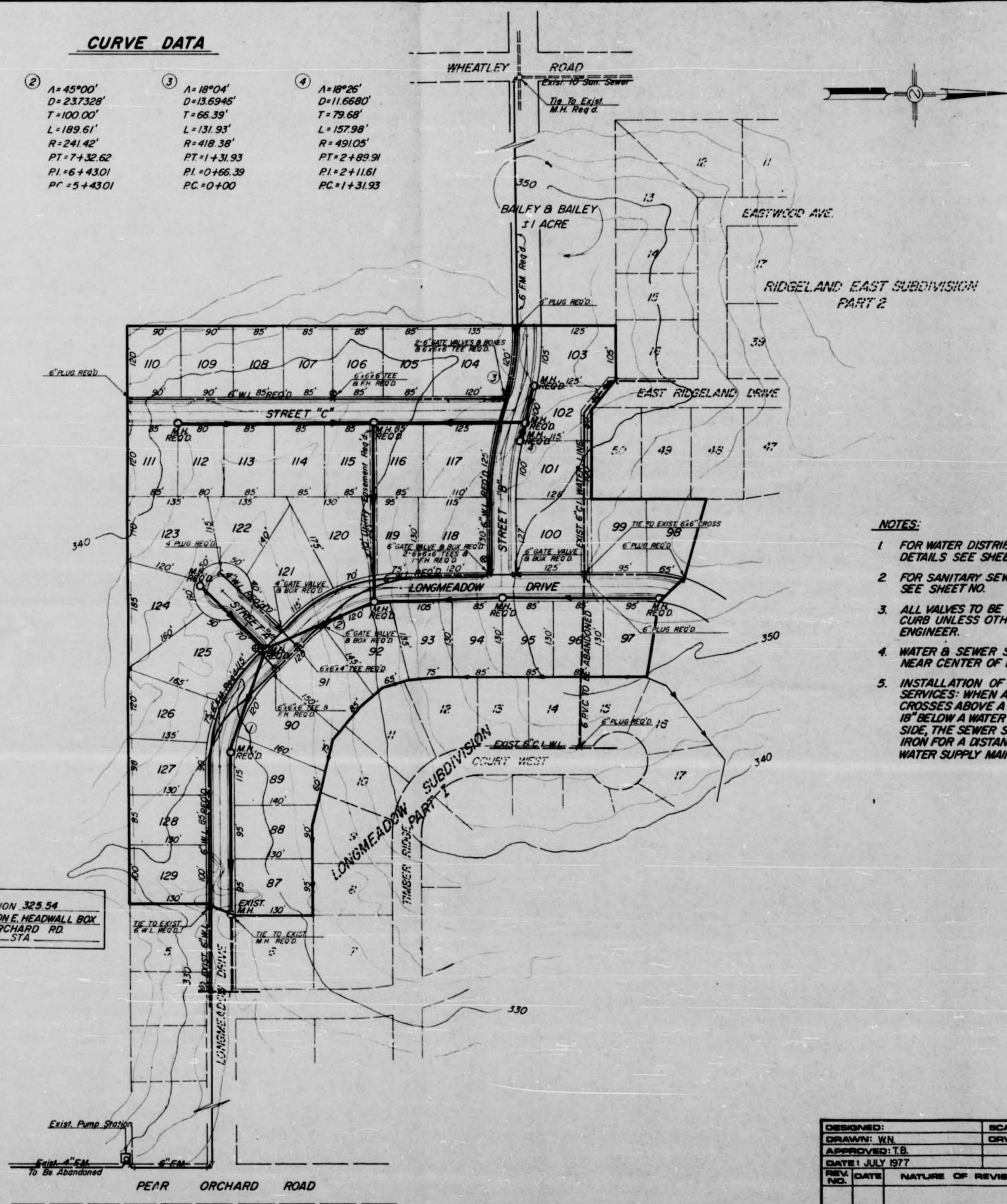
NOTES:

1. LOT DIMENSIONS SUBJECT TO MINOR CORRECT
2. STORM SEWER FIGURED USING THE RATIONAL METHOD Q=CIA USING 10 YEAR FLOOD CONDITIONS AND MANNING FORMULA $Q = 1.486 / n A R^{2/3} S^{1/2}$
3. ALL DITCHES TO HAVE GROWING STAND OF BERMUDA GRASS.
4. FLARED END SECTION REQ'D ON ALL DRAIN PIPE.
5. ALL INLETS TO BE 5' STANDARD OR THE APPLICABLE STANDARD AS DIRECTED BY THE ENGINEER OR OWNER.
6. ALL RADI ON CURB & GUTTER AT STREET INTERSECTIONS TO BE 20.0'.
7. ALL STREETS TO HAVE 50' ROW
8. CURB AND GUTTER CONTRACTOR IS TO VERIFY AFTER FORMS ARE SET AND PRIOR TO POURING CONCRETE, THAT GUTTERS DRAIN TO INLETS.
9. STREETS ARE TO BE GRADED AND SHAPED AS IF ALTERNATE 1 1/2" OF BLACK BASE AND 1 1/2" OF WEARING COURSE IS TO BE USED UNLESS OTHERWISE SPECIFIED BY THE OWNER PRIOR TO ROUGH GRADING. IF ALTERNATE 1 1/2" CLAY GRAVEL AND 2 1/2" WEARING COURSE IS USED, CONTRACTOR WILL BE PAID BY UNIT PRICE ON THE PLAN MEASURE QUANTITY FOR EXCAVATING ADDITIONAL 4" OF SUBGRADE, WHICH SHALL BE DONE AS A PART OF FINISH GRADING AFTER THE CURB AND GUTTER IS POURED.

DESIGNED:	SCALE: 1"=100'	LESTER ENGINEERING COMPANY CONSULTING ENGINEERS JACKSON, MISSISSIPPI
DRAWN: WN	DRWS. NO: 75-252-3	
APPROVED: L.B.		LONGMEADOW SUBDIVISION PART 3 LOT LAYOUT & DRAINAGE PLAN
DATE: JULY 27		SHEET NO. 2
REV. NO.	NATURE OF REVISION	BY

CURVE DATA

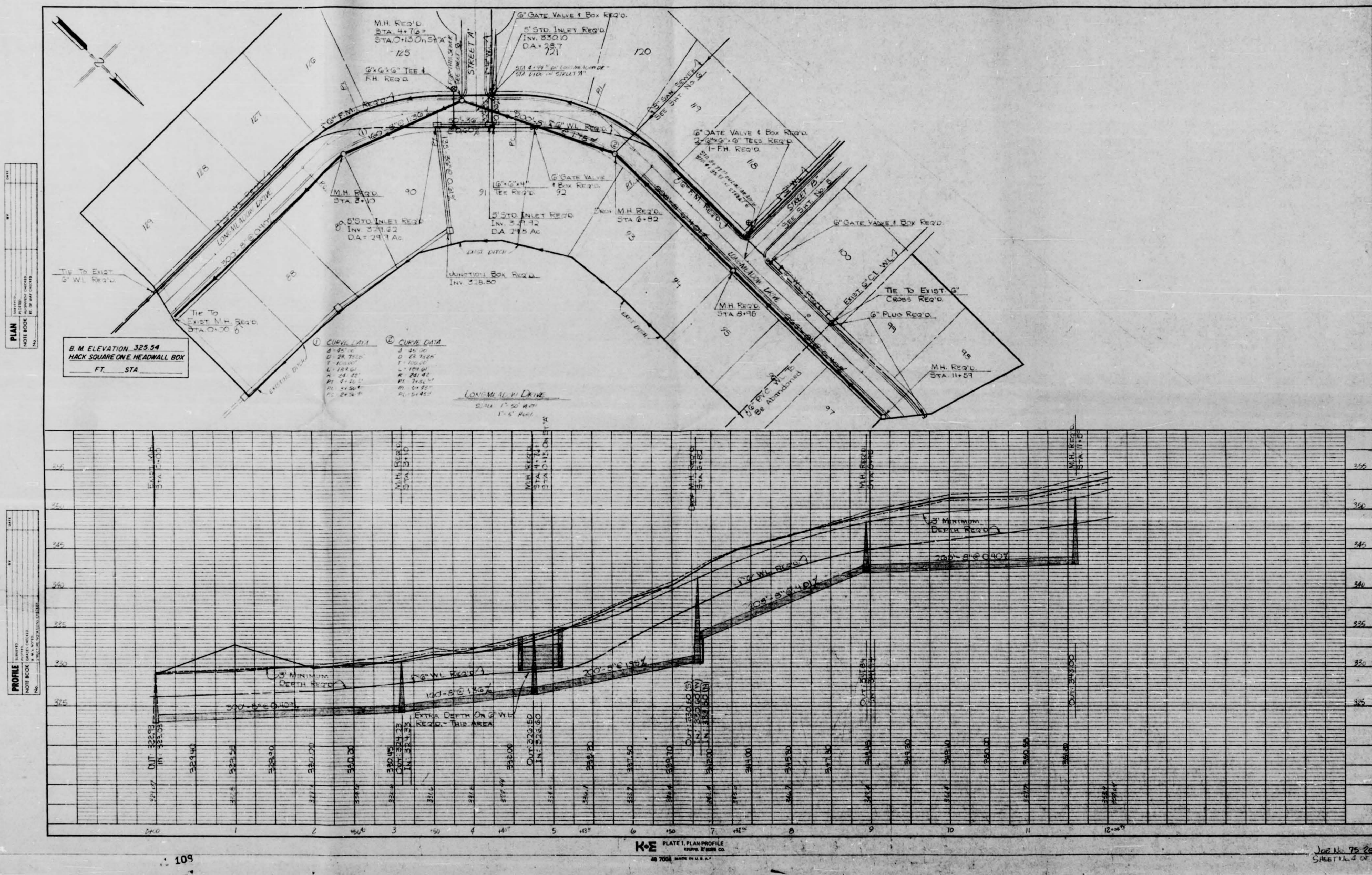
1	2	3	4
A=43°00'	A=45°00'	A=18°04'	A=18°26'
D=237328'	D=237328'	D=136945'	D=116680'
T=100.00'	T=100.00'	T=66.39'	T=79.68'
L=189.61'	L=189.61'	L=131.93'	L=127.98'
R=241.42'	R=241.42'	R=418.38'	R=491.05'
PT=+446.01'	PT=+74.3262'	PT=+131.93'	PT=+2+89.91'
PI=+3+56.40'	PI=+0+43.01'	PI=+0+466.39'	PI=+2+116.1'
PC=+2+56.40'	PC=+5+43.01'	PC=+0+00'	PC=+1+31.93'

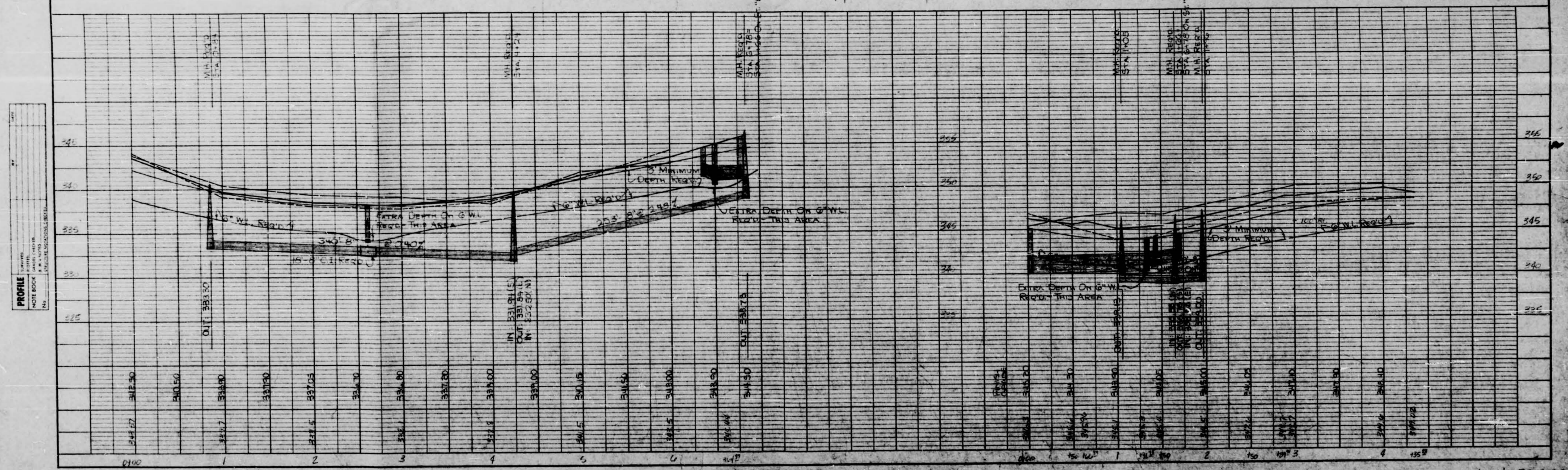
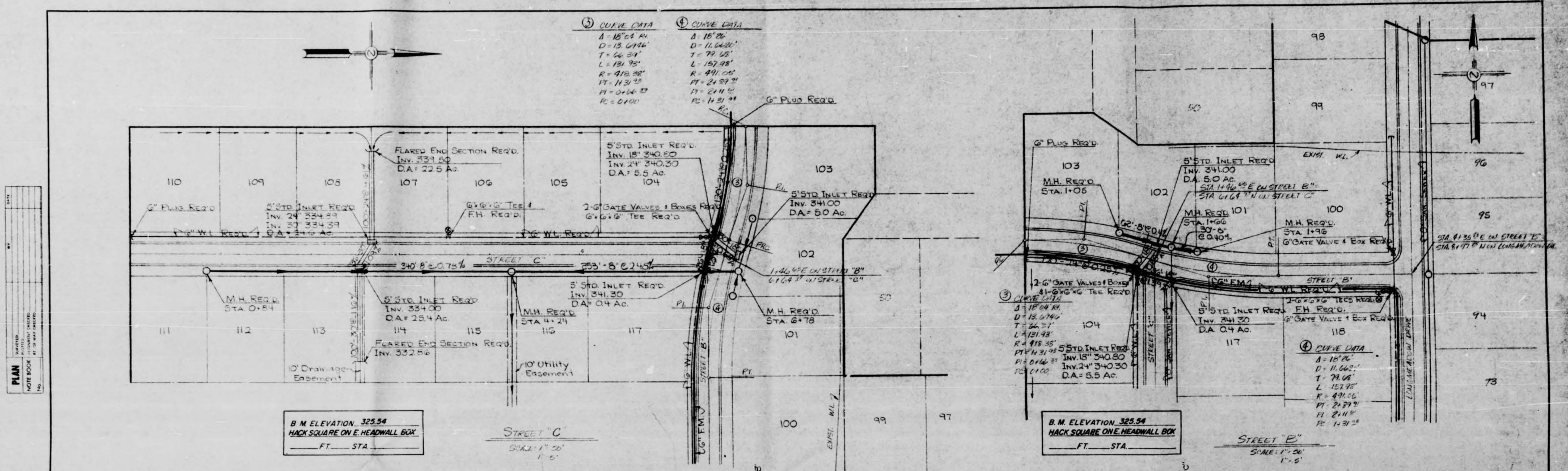


- NOTES:**
1. FOR WATER DISTRIBUTION SYSTEM CONSTRUCTION DETAILS SEE SHEET NO.
 2. FOR SANITARY SEWER CONSTRUCTION DETAILS SEE SHEET NO.
 3. ALL VALVES TO BE LOCATED BEHIND STREET CURB UNLESS OTHERWISE DIRECTED BY THE ENGINEER.
 4. WATER & SEWER SERVICES TO BE LOCATED NEAR CENTER OF LOTS.
 5. INSTALLATION OF SANITARY SEWER MAINS AND SERVICES: WHEN A SEWER SERVICE LINE CROSSES ABOVE A WATER SUPPLY MAIN OR WITHIN 18" BELOW A WATER MAIN, OR WITHIN 10' ON EITHER SIDE, THE SEWER SERVICE OR MAIN SHALL BE CAST IRON FOR A DISTANCE OF 10' ON EITHER SIDE OF THE WATER SUPPLY MAIN.

8 M ELEVATION 325.54
HACK SQUARE ONE HEADWALL BOX
ON PEAR ORCHARD RD
... FT. STA.

DESIGNED: _____	SCALE: 1"=100'	LESTER ENGINEERING COMPANY CONSULTING ENGINEERS JACKSON, MISSISSIPPI					
DRAWN: WJ	DRWG. NO: 75-252-3						
APPROVED: TB	DATE: JULY 1977						
REV. NO.	DATE	NATURE OF REVISION	BY	CHKD	APPD	LONGMEADOW SUBDIVISION PART 3 WATER & SEWER LAYOUT	SHEET NO. 3

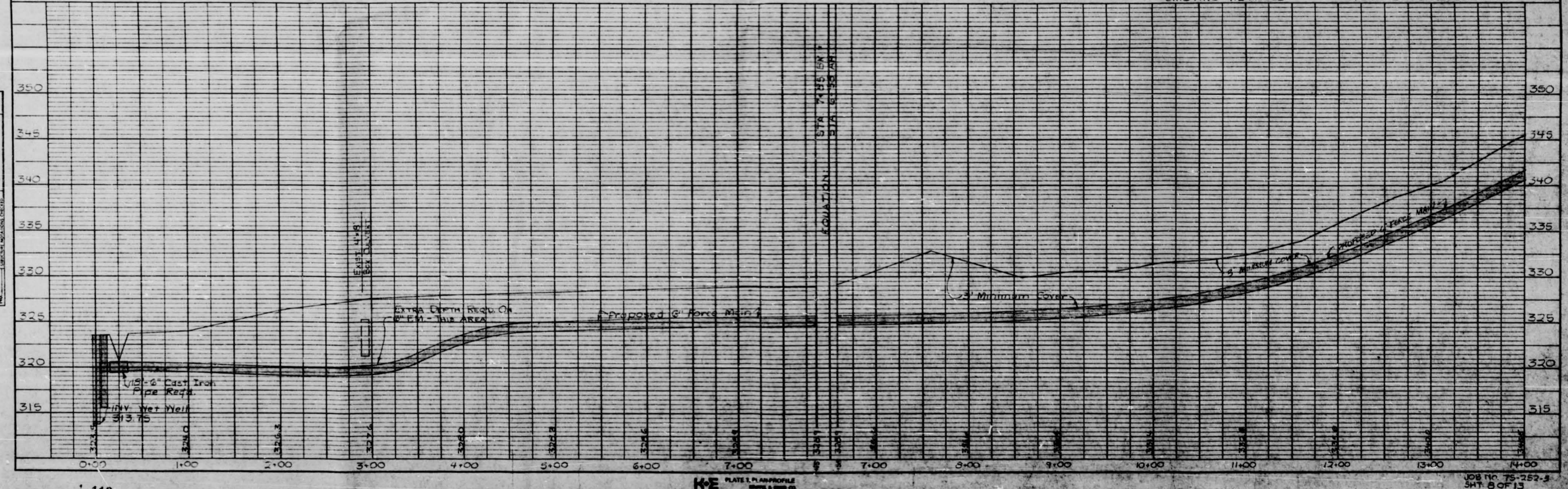




100

PLATE 1, PLAN PROFILE
K&E ENGINEERS & ARCHITECTS
7004

Job No. 75-223
SHEET NO. 1 OF 2



1412

1413

1414

1415

1416

1417

1418

1419

1420

1421

1422

1423

1424

1425

1426

1427

1428

1429

1430

1431

1432

1433

1434

1435

1436

1437

1438

1439

1440

1441

1442

1443

1444

1445

1446

1447

1448

1449

1450

1451

1452

1453

1454

1455

1456

1457

1458

1459

1460

1461

1462

1463

1464

1465

1466

1467

1468

1469

1470

1471

1472

1473

1474

1475

1476

1477

1478

1479

1480

1481

1482

1483

1484

1485

1486

1487

1488

1489

1490

1491

1492

1493

1494

1495

1496

1497

1498

1499

1500

1501

1502

1503

1504

1505

1506

1507

1508

1509

1510

1511

1512

1513

1514

1515

1516

1517

1518

1519

1520

1521

1522

1523

1524

1525

1526

1527

1528

1529

1530

1531

1532

1533

1534

1535

1536

1537

1538

1539

1540

1541

1542

1543

1544

1545

1546

1547

1548

1549

1550

1551

1552

1553

1554

1555

1556

1557

1558

1559

1560

1561

1562

1563

1564

1565

1566

1567

1568

1569

1570

1571

1572

1573

1574

1575

1576

1577

1578

1579

1580

1581

1582

1583

1584

1585

1586

1587

1588

1589

1590

1591

1592

1593

1594

1595

1596

1597

1598

1599

1600

1601

1602

1603

1604

1605

1606

1607

1608

1609

1610

1611

1612

1613

1614

1615

1616

1617

1618

1619

1620

1621

1622

1623

1624

1625

1626

1627

1628

1629

1630

1631

1632

1633

1634

1635

1636

1637

1638

1639

1640

1641

1642

1643

1644

1645

1646

1647

1648

1649

1650

1651

1652

1653

1654

1655

1656

1657

1658

1659

1660

1661

1662

1663

1664

1665

1666

1667

1668

1669

1670

1671

1672

1673

1674

1675

1676

1677

1678

1679

1680

1681

1682

1683

1684

1685

1686

1687

1688

1689

1690

1691

1692

1693

1694

1695

1696

1697

1698

1699

1700

1701

1702

1703

1704

1705

1706

1707

1708

1709

1710

1711

1712

1713

1714

1715

1716

1717

1718

1719

1720

1721

1722

1723

1724

1725

1726

1727

1728

1729

1730

1731

1732

1733

1734

1735

1736

1737

1738

1739

1740

1741

1742

1743

1744

1745

1746

1747

1748

1749

1750

1751

1752

1753

1754

1755

1756

1757

1758

1759

1760

1761

1762

1763

1764

1765

1766

1767

1768

1769

1770

1771

1772

1773

1774

1775

1776

1777

1778

1779

1780

1781

1782

1783

1784

1785

1786

1787

1788

1789

1790

1791

1792

1793

1794

1795

1796

1797

1798

1799

1800

1801

1802

1803

1804

1805

1806

1807

1808

1809

1810

1811

1812

1813

1814

1815

1816

1817

1818

1819

1820

1821

1822

1823

1824

1825

1826

1827

1828

1829

1830

1831

1832

1833

1834

1835

1836

1837

1838

1839

1840

1841

1842

1843

1844

1845

1846

1847

1848

1849

1850

1851

1852

1853

1854

1855

1856

1857

1858

1859

1860

1861

1862

1863

1864

1865

1866

1867

1868

1869

1870

1871

1872

1873

1874

1875

1876

1877

1878

1879

1880

1881

1882

1883

1884

1885

1886

1887

1888

1889

1890

1891

1892

1893

1894

1895

1896

1897

1898

1899

1900

1412

1413

1414

1415

1416

1417

1418

1419

1420

1421

1422

1423

1424

1425

1426

1427

1428

1429

1430

1431

1432

1433

1434

1435

1436

1437

1438

1439

1440

1441

1442

1443

1444

1445

1446

1447

1448

1449

1450

1451

1452

1453

1454

1455

1456

1457

1458

1459

1460

1461

1462

1463

1464

1465

1466

1467

1468

1469

1470

1471

1472

1473

1474

1475

1476

1477

1478

1479

1480

1481

1482

1483

1484

1485

1486

1487

1488

1489

1490

1491

1492

1493

1494

1495

1496

1497

1498

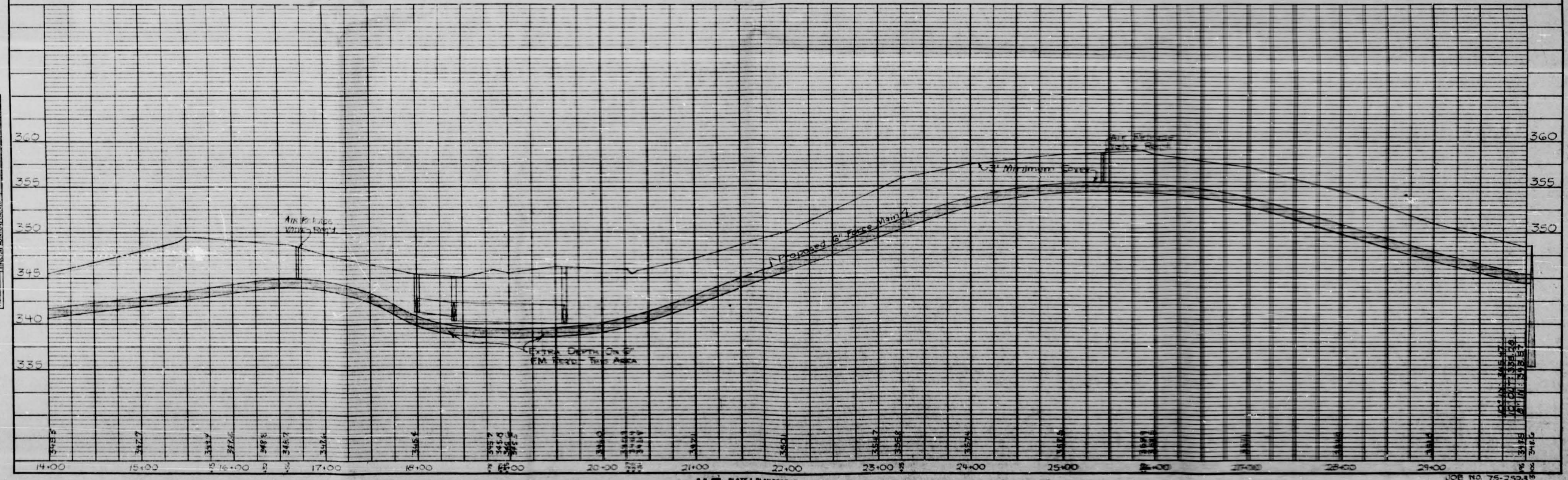
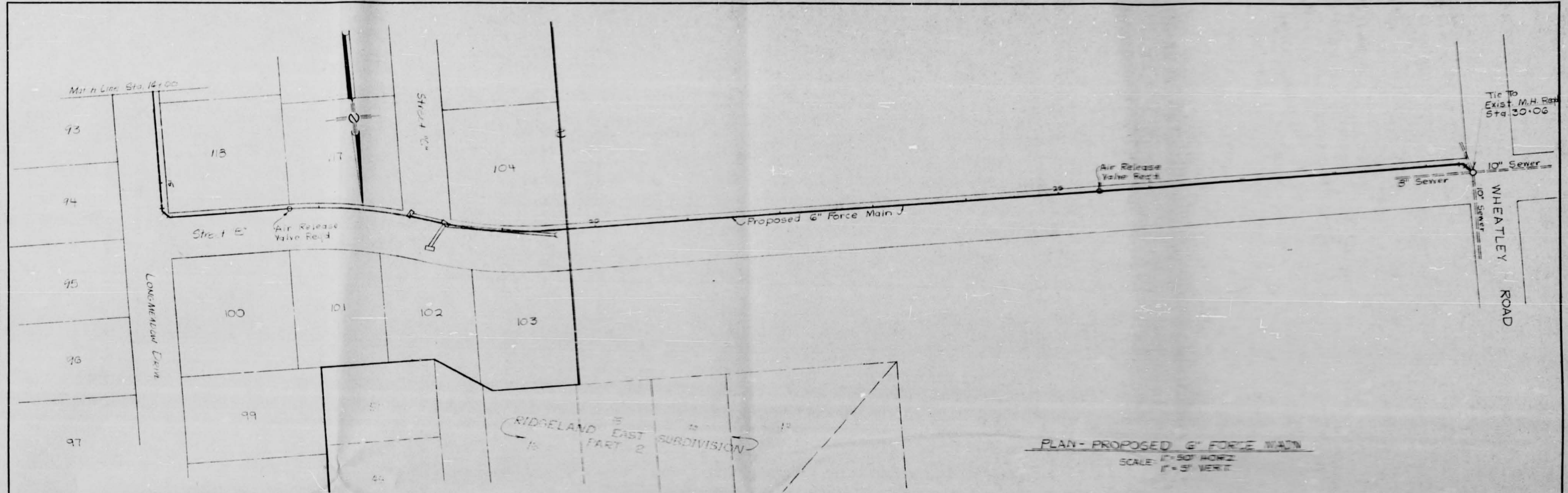
1499

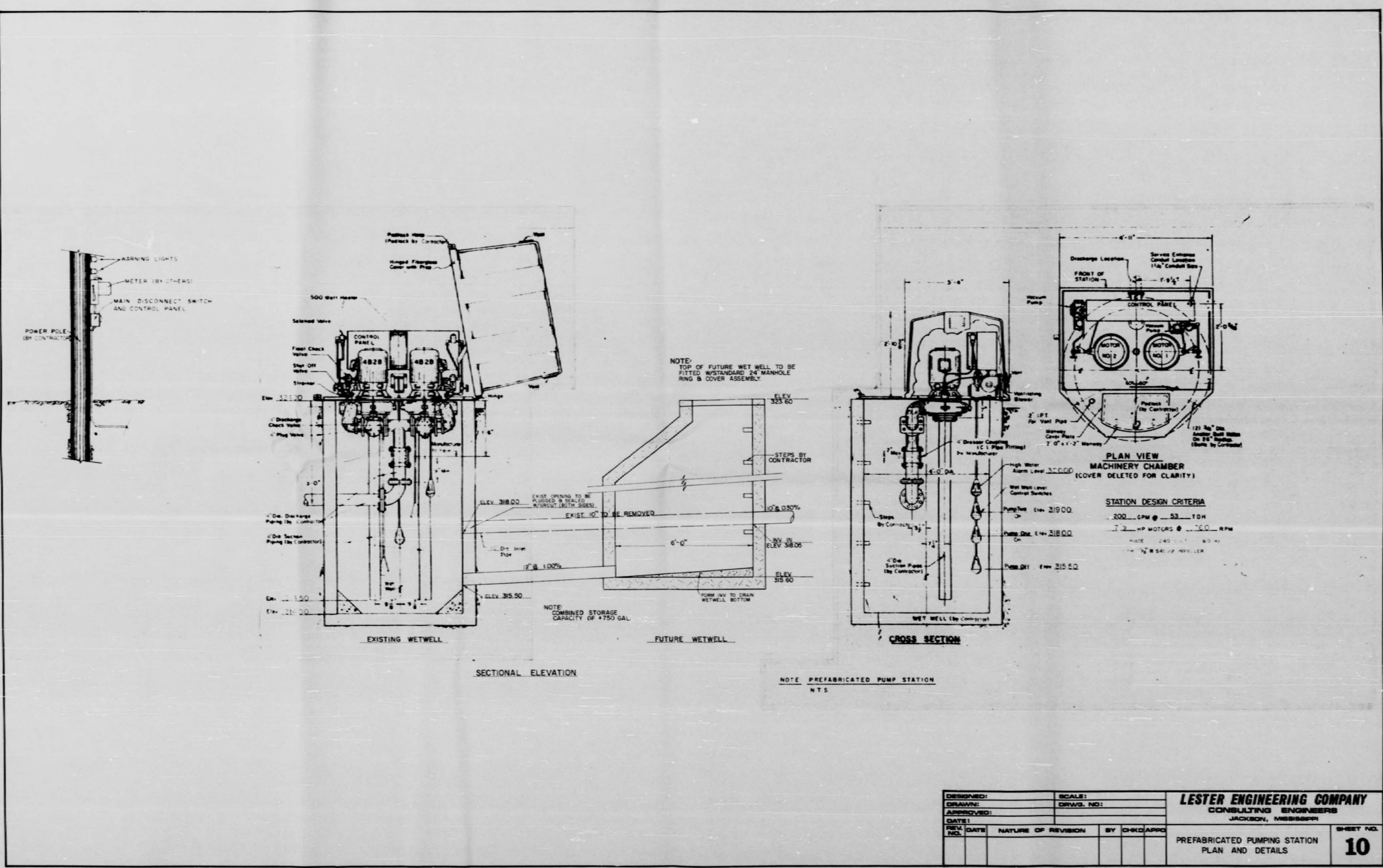
1500

1501

PLAN
 DATE: _____
 DRAWN BY: _____
 CHECKED BY: _____
 PROJECT NO.: _____
 SHEET NO.: _____

PROFILE
 DATE: _____
 DRAWN BY: _____
 CHECKED BY: _____
 PROJECT NO.: _____
 SHEET NO.: _____





DESIGNED:	SCALE:	LESTER ENGINEERING COMPANY CONSULTING ENGINEERS JACKSON, MISSISSIPPI	SHEET NO. 10	
DRAWING:	DRWG. NO.:			
APPROVED:		PREFABRICATED PUMP STATION PLAN AND DETAILS	JOB NO. 75-252-3 SHT. NO. 10 OF 15	
DATE:				
REV. NO.	DATE	NATURE OF REVISION	BY	CHECKED

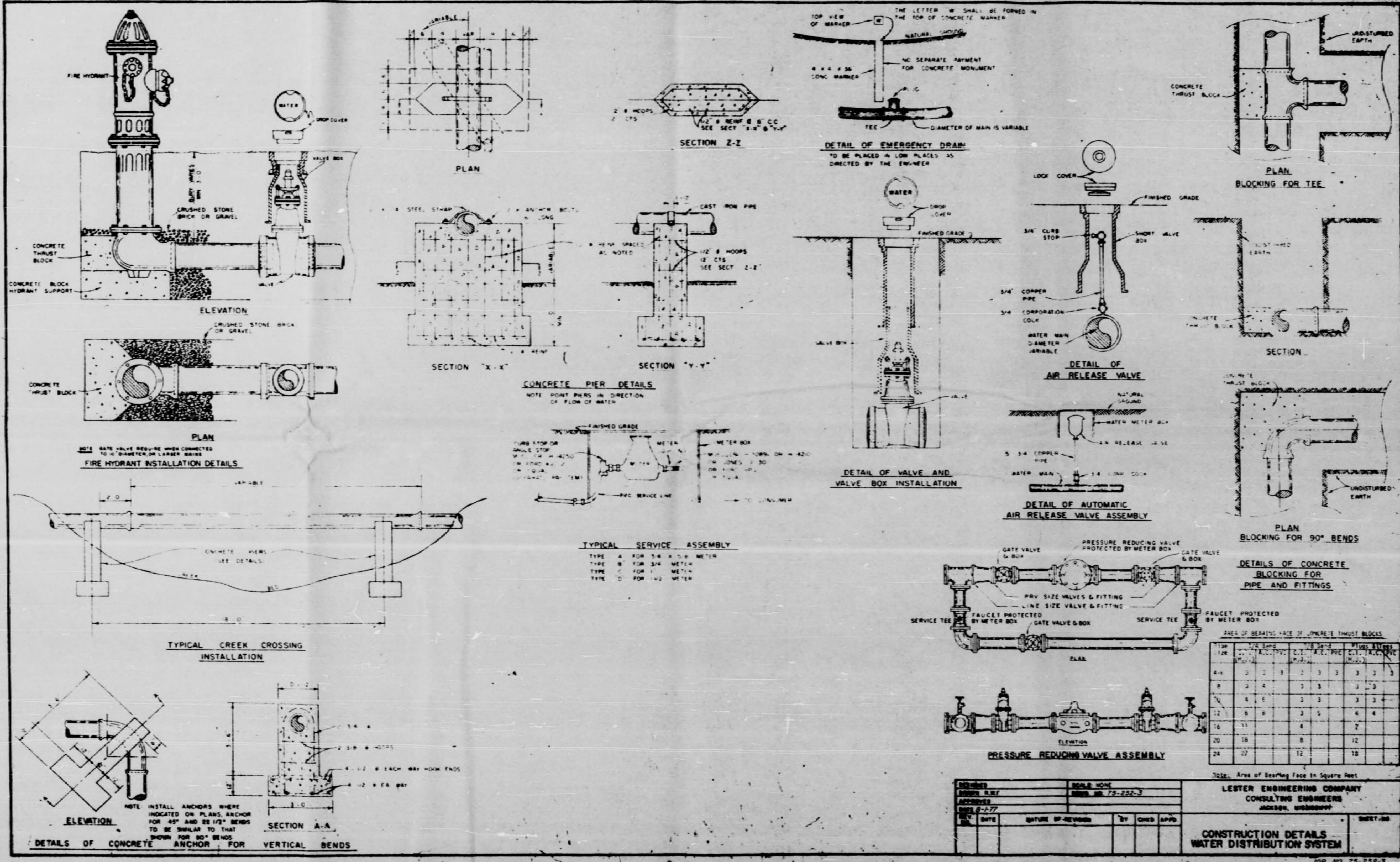


TABLE: Area of Bearing Face in Square Feet

PIPE SIZE (IN.)	VALVE SIZE (IN.)	VALVE TYPE	AREA (SQ. FT.)
4"	3"	3"	3.3
6"	4"	3"	3.3
8"	6"	3"	4.4
10"	8"	3"	4.4
12"	10"	3"	5.5
14"	12"	3"	5.5
16"	14"	3"	6.6
18"	16"	3"	6.6
20"	18"	3"	7.7
24"	22"	3"	11.0

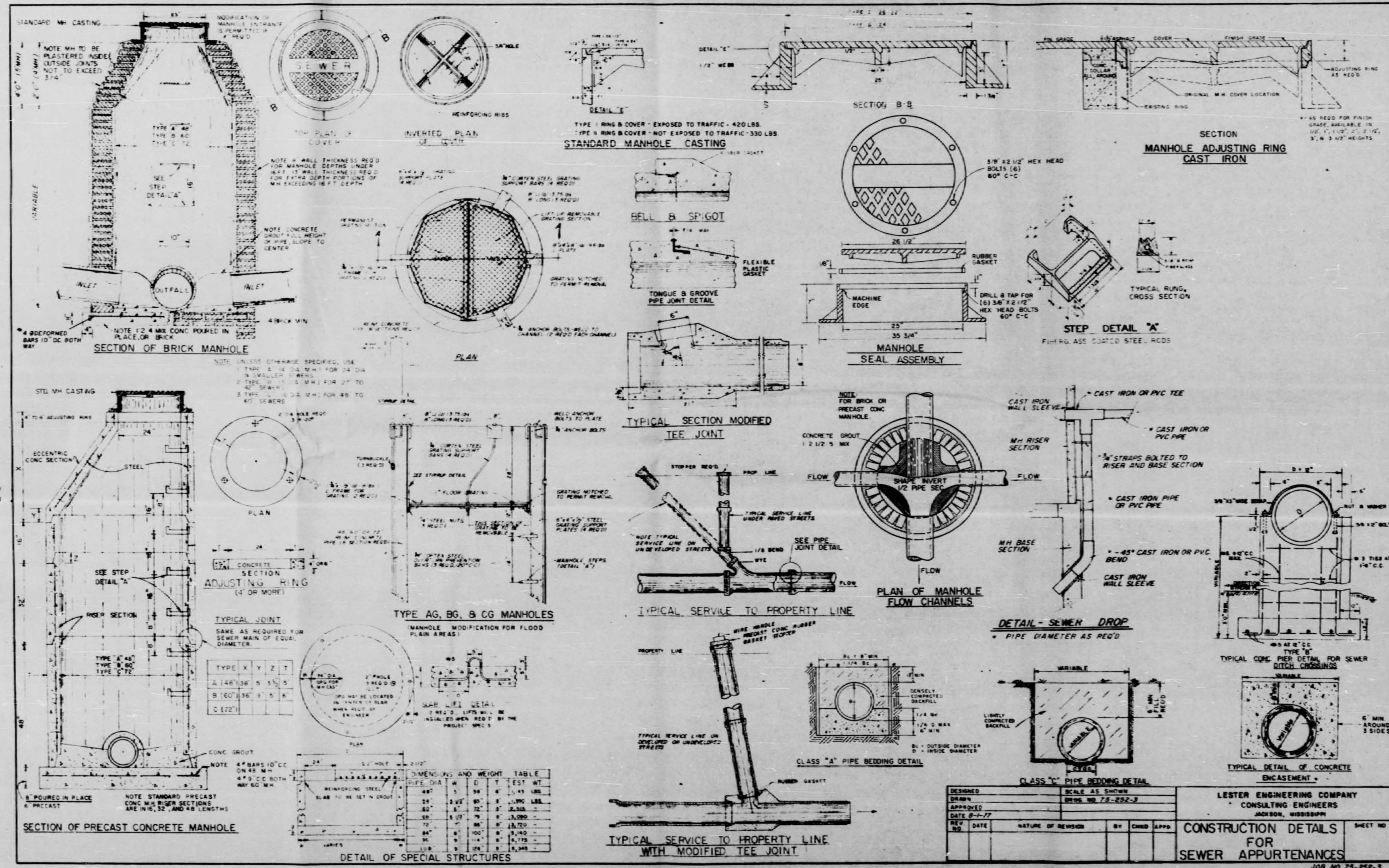
REVISIONS

NO.	DATE	DESCRIPTION	BY	CHKD.
1	8-2-77			

JOB NO. 75-252-3
 SHEET NO. 11 OF 13

LESTER ENGINEERING COMPANY
 CONSULTING ENGINEERS
 1400 W. 10th St., Lincoln, Nebraska

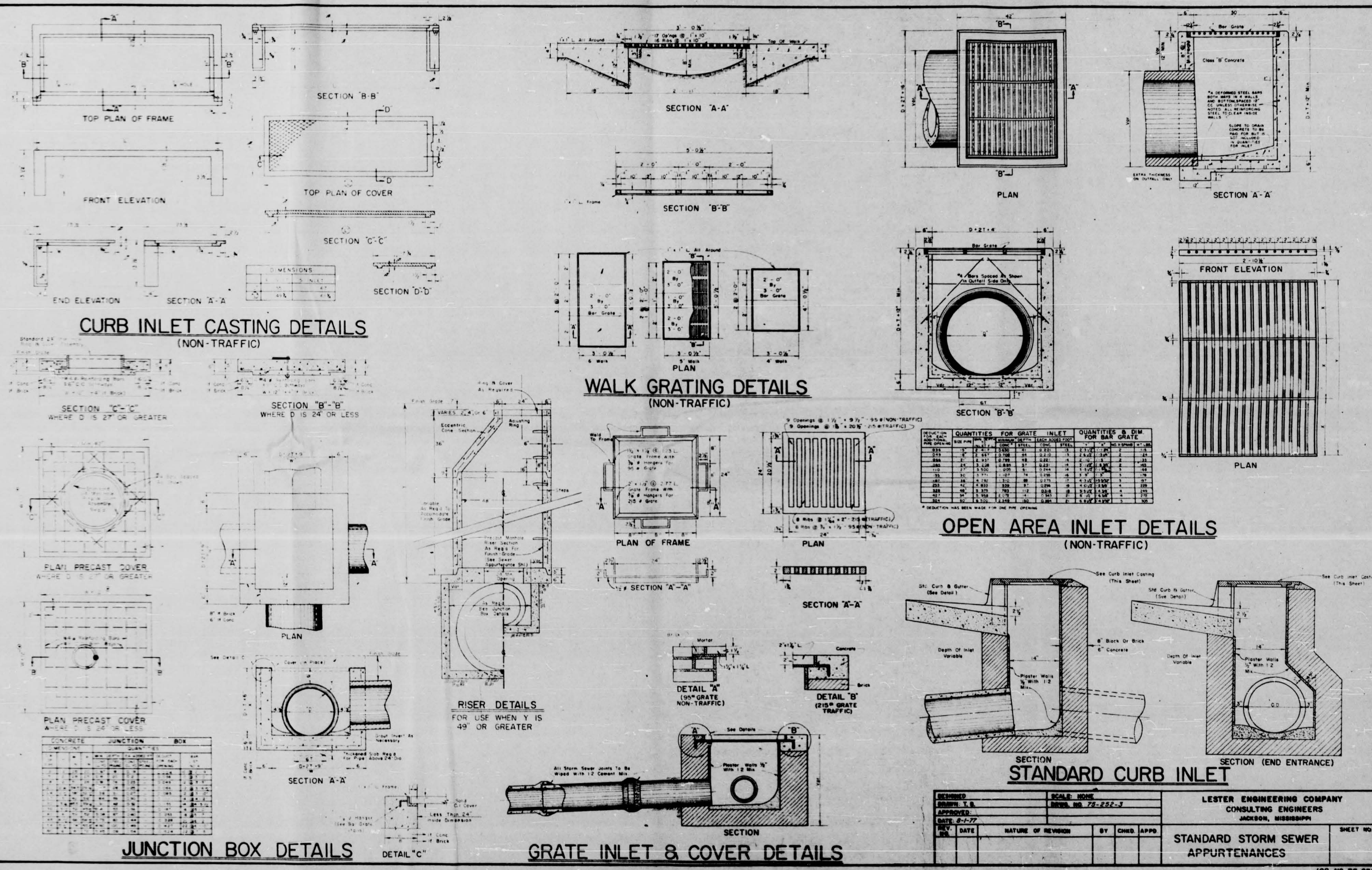
CONSTRUCTION DETAILS
 WATER DISTRIBUTION SYSTEM



LESTER ENGINEERING COMPANY
CONSULTING ENGINEERS
INDIANAPOLIS, INDIANA

CONSTRUCTION DETAILS FOR SEWER APPURTENANCES

DESIGNED: _____
SCALE: AS SHOWN
DRAWN: _____
APPROVED: _____
DATE: 8-27-77
JOB NO. 75-252-3
SHEET NO. 12 OF 13

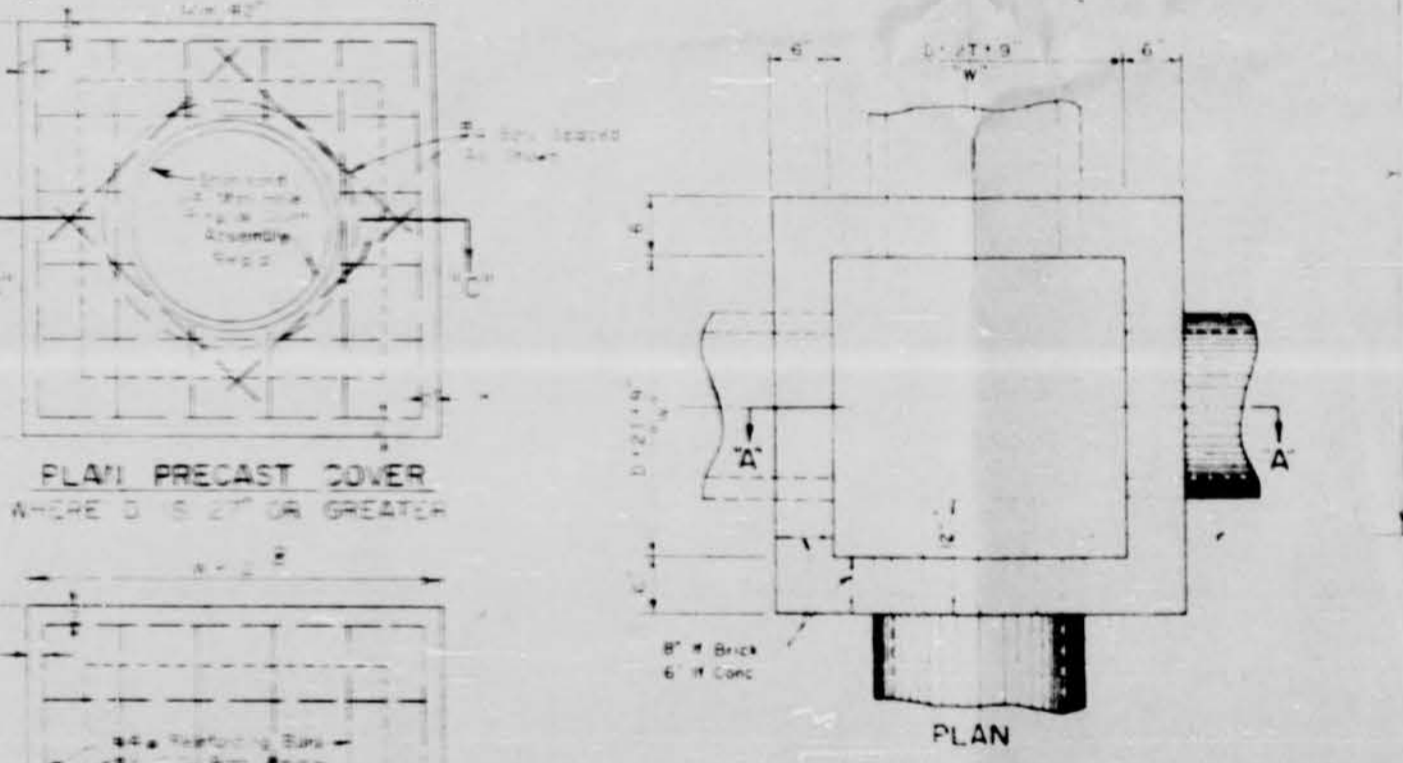


CURB INLET CASTING DETAILS (NON-TRAFFIC)

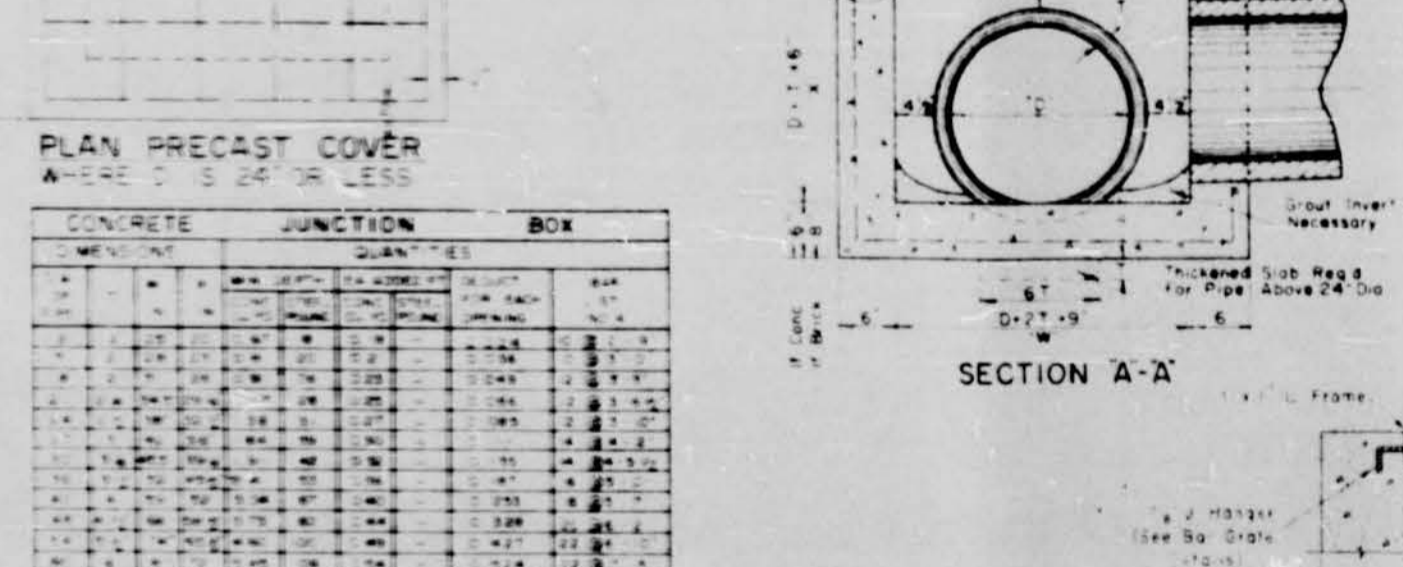
STATEMENT OF MATERIALS

ITEM NO.	DESCRIPTION	QUANTITY	UNIT
1	Cast Iron Curb Inlet Casting	1	each
2	Cast Iron Frame	1	each
3	Cast Iron Cover	1	each
4	Cast Iron Gasket	1	each
5	Cast Iron Nut	1	each
6	Cast Iron Washer	1	each
7	Cast Iron Bolt	1	each
8	Cast Iron Key	1	each
9	Cast Iron Pin	1	each
10	Cast Iron Rivet	1	each
11	Cast Iron Seal	1	each
12	Cast Iron Gasket	1	each
13	Cast Iron Nut	1	each
14	Cast Iron Washer	1	each
15	Cast Iron Bolt	1	each
16	Cast Iron Key	1	each
17	Cast Iron Pin	1	each
18	Cast Iron Rivet	1	each
19	Cast Iron Seal	1	each
20	Cast Iron Gasket	1	each
21	Cast Iron Nut	1	each
22	Cast Iron Washer	1	each
23	Cast Iron Bolt	1	each
24	Cast Iron Key	1	each
25	Cast Iron Pin	1	each
26	Cast Iron Rivet	1	each
27	Cast Iron Seal	1	each
28	Cast Iron Gasket	1	each
29	Cast Iron Nut	1	each
30	Cast Iron Washer	1	each
31	Cast Iron Bolt	1	each
32	Cast Iron Key	1	each
33	Cast Iron Pin	1	each
34	Cast Iron Rivet	1	each
35	Cast Iron Seal	1	each
36	Cast Iron Gasket	1	each
37	Cast Iron Nut	1	each
38	Cast Iron Washer	1	each
39	Cast Iron Bolt	1	each
40	Cast Iron Key	1	each
41	Cast Iron Pin	1	each
42	Cast Iron Rivet	1	each
43	Cast Iron Seal	1	each
44	Cast Iron Gasket	1	each
45	Cast Iron Nut	1	each
46	Cast Iron Washer	1	each
47	Cast Iron Bolt	1	each
48	Cast Iron Key	1	each
49	Cast Iron Pin	1	each
50	Cast Iron Rivet	1	each
51	Cast Iron Seal	1	each
52	Cast Iron Gasket	1	each
53	Cast Iron Nut	1	each
54	Cast Iron Washer	1	each
55	Cast Iron Bolt	1	each
56	Cast Iron Key	1	each
57	Cast Iron Pin	1	each
58	Cast Iron Rivet	1	each
59	Cast Iron Seal	1	each
60	Cast Iron Gasket	1	each
61	Cast Iron Nut	1	each
62	Cast Iron Washer	1	each
63	Cast Iron Bolt	1	each
64	Cast Iron Key	1	each
65	Cast Iron Pin	1	each
66	Cast Iron Rivet	1	each
67	Cast Iron Seal	1	each
68	Cast Iron Gasket	1	each
69	Cast Iron Nut	1	each
70	Cast Iron Washer	1	each
71	Cast Iron Bolt	1	each
72	Cast Iron Key	1	each
73	Cast Iron Pin	1	each
74	Cast Iron Rivet	1	each
75	Cast Iron Seal	1	each
76	Cast Iron Gasket	1	each
77	Cast Iron Nut	1	each
78	Cast Iron Washer	1	each
79	Cast Iron Bolt	1	each
80	Cast Iron Key	1	each
81	Cast Iron Pin	1	each
82	Cast Iron Rivet	1	each
83	Cast Iron Seal	1	each
84	Cast Iron Gasket	1	each
85	Cast Iron Nut	1	each
86	Cast Iron Washer	1	each
87	Cast Iron Bolt	1	each
88	Cast Iron Key	1	each
89	Cast Iron Pin	1	each
90	Cast Iron Rivet	1	each
91	Cast Iron Seal	1	each
92	Cast Iron Gasket	1	each
93	Cast Iron Nut	1	each
94	Cast Iron Washer	1	each
95	Cast Iron Bolt	1	each
96	Cast Iron Key	1	each
97	Cast Iron Pin	1	each
98	Cast Iron Rivet	1	each
99	Cast Iron Seal	1	each
100	Cast Iron Gasket	1	each

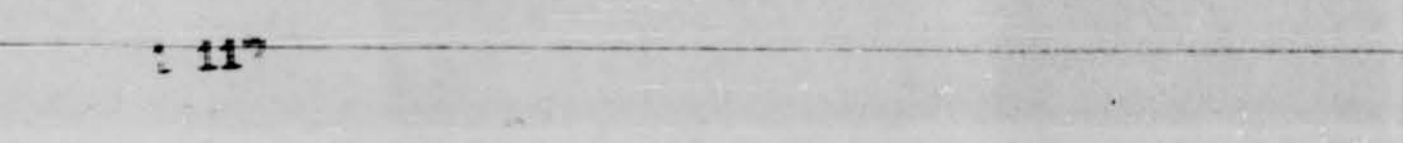
SECTION "C-C" WHERE D IS 27" OR GREATER



SECTION "B-B" WHERE D IS 24" OR LESS



PLAN PRECAST COVER



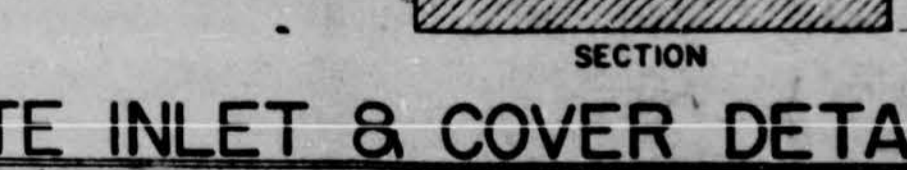
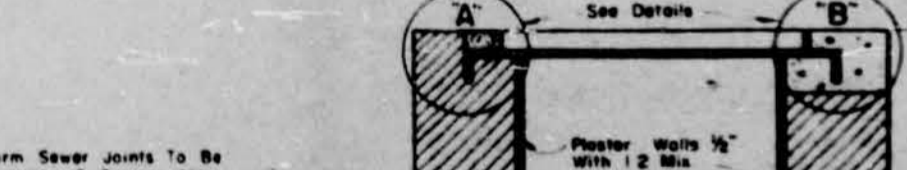
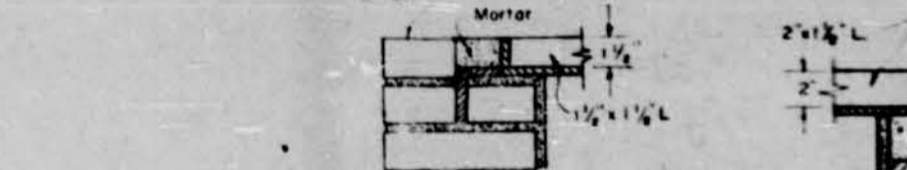
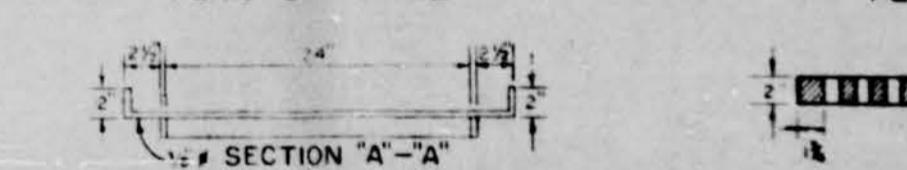
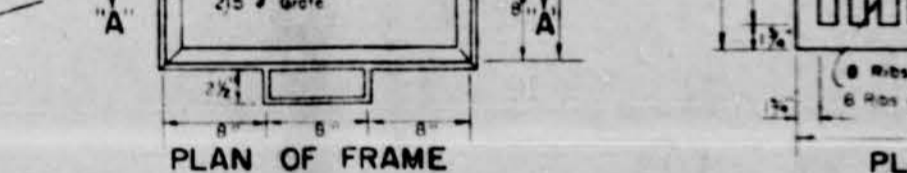
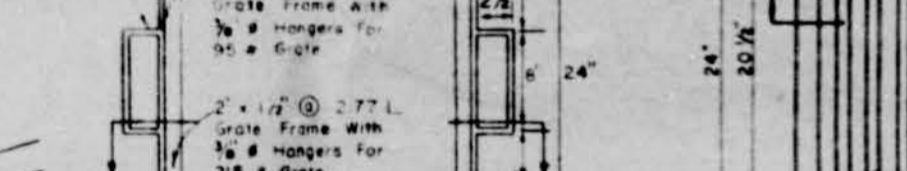
PLAN PRECAST COVER



CONCRETE JUNCTION BOX

ITEM NO.	DESCRIPTION	QUANTITY	UNIT
1	Concrete Junction Box	1	each
2	Concrete Cover	1	each
3	Concrete Gasket	1	each
4	Concrete Nut	1	each
5	Concrete Washer	1	each
6	Concrete Bolt	1	each
7	Concrete Key	1	each
8	Concrete Pin	1	each
9	Concrete Rivet	1	each
10	Concrete Seal	1	each
11	Concrete Gasket	1	each
12	Concrete Nut	1	each
13	Concrete Washer	1	each
14	Concrete Bolt	1	each
15	Concrete Key	1	each
16	Concrete Pin	1	each
17	Concrete Rivet	1	each
18	Concrete Seal	1	each
19	Concrete Gasket	1	each
20	Concrete Nut	1	each
21	Concrete Washer	1	each
22	Concrete Bolt	1	each
23	Concrete Key	1	each
24	Concrete Pin	1	each
25	Concrete Rivet	1	each
26	Concrete Seal	1	each
27	Concrete Gasket	1	each
28	Concrete Nut	1	each
29	Concrete Washer	1	each
30	Concrete Bolt	1	each
31	Concrete Key	1	each
32	Concrete Pin	1	each
33	Concrete Rivet	1	each
34	Concrete Seal	1	each
35	Concrete Gasket	1	each
36	Concrete Nut	1	each
37	Concrete Washer	1	each
38	Concrete Bolt	1	each
39	Concrete Key	1	each
40	Concrete Pin	1	each
41	Concrete Rivet	1	each
42	Concrete Seal	1	each
43	Concrete Gasket	1	each
44	Concrete Nut	1	each
45	Concrete Washer	1	each
46	Concrete Bolt	1	each
47	Concrete Key	1	each
48	Concrete Pin	1	each
49	Concrete Rivet	1	each
50	Concrete Seal	1	each
51	Concrete Gasket	1	each
52	Concrete Nut	1	each
53	Concrete Washer	1	each
54	Concrete Bolt	1	each
55	Concrete Key	1	each
56	Concrete Pin	1	each
57	Concrete Rivet	1	each
58	Concrete Seal	1	each
59	Concrete Gasket	1	each
60	Concrete Nut	1	each
61	Concrete Washer	1	each
62	Concrete Bolt	1	each
63	Concrete Key	1	each
64	Concrete Pin	1	each
65	Concrete Rivet	1	each
66	Concrete Seal	1	each
67	Concrete Gasket	1	each
68	Concrete Nut	1	each
69	Concrete Washer	1	each
70	Concrete Bolt	1	each
71	Concrete Key	1	each
72	Concrete Pin	1	each
73	Concrete Rivet	1	each
74	Concrete Seal	1	each
75	Concrete Gasket	1	each
76	Concrete Nut	1	each
77	Concrete Washer	1	each
78	Concrete Bolt	1	each
79	Concrete Key	1	each
80	Concrete Pin	1	each
81	Concrete Rivet	1	each
82	Concrete Seal	1	each
83	Concrete Gasket	1	each
84	Concrete Nut	1	each
85	Concrete Washer	1	each
86	Concrete Bolt	1	each
87	Concrete Key	1	each
88	Concrete Pin	1	each
89	Concrete Rivet	1	each
90	Concrete Seal	1	each
91	Concrete Gasket	1	each
92	Concrete Nut	1	each
93	Concrete Washer	1	each
94	Concrete Bolt	1	each
95	Concrete Key	1	each
96	Concrete Pin	1	each
97	Concrete Rivet	1	each
98	Concrete Seal	1	each
99	Concrete Gasket	1	each
100	Concrete Nut	1	each

WALK GRATING DETAILS (NON-TRAFFIC)



OPEN AREA INLET DETAILS (NON-TRAFFIC)

QUANTITIES FOR GRATE INLET

ITEM NO.	DESCRIPTION	QUANTITY	UNIT
1	Open Area Inlet Casting	1	each
2	Open Area Inlet Frame	1	each
3	Open Area Inlet Cover	1	each
4	Open Area Inlet Gasket	1	each
5	Open Area Inlet Nut	1	each
6	Open Area Inlet Washer	1	each
7	Open Area Inlet Bolt	1	each
8	Open Area Inlet Key	1	each
9	Open Area Inlet Pin	1	each
10	Open Area Inlet Rivet	1	each
11	Open Area Inlet Seal	1	each
12	Open Area Inlet Gasket	1	each
13	Open Area Inlet Nut	1	each
14	Open Area Inlet Washer	1	each
15	Open Area Inlet Bolt	1	each
16	Open Area Inlet Key	1	each
17	Open Area Inlet Pin	1	each
18	Open Area Inlet Rivet	1	each
19	Open Area Inlet Seal	1	each
20	Open Area Inlet Gasket	1	each
21	Open Area Inlet Nut	1	each
22	Open Area Inlet Washer	1	each
23	Open Area Inlet Bolt	1	each
24	Open Area Inlet Key	1	each
25	Open Area Inlet Pin	1	each
26	Open Area Inlet Rivet	1	each
27	Open Area Inlet Seal	1	each
28	Open Area Inlet Gasket	1	each
29	Open Area Inlet Nut	1	each
30	Open Area Inlet Washer	1	each
31	Open Area Inlet Bolt	1	each
32	Open Area Inlet Key	1	each
33	Open Area Inlet Pin	1	each
34	Open Area Inlet Rivet	1	each
35	Open Area Inlet Seal	1	each
36	Open Area Inlet Gasket	1	each
37	Open Area Inlet Nut	1	each
38	Open Area Inlet Washer	1	each
39	Open Area Inlet Bolt	1	each
40	Open Area Inlet Key	1	each
41	Open Area Inlet Pin	1	each
42	Open Area Inlet Rivet	1	each
43	Open Area Inlet Seal	1	each
44	Open Area Inlet Gasket	1	each
45	Open Area Inlet Nut	1	each
46	Open Area Inlet Washer	1	each
47	Open Area Inlet Bolt	1	each
48	Open Area Inlet Key	1	each
49	Open Area Inlet Pin	1	each
50	Open Area Inlet Rivet	1	each
51	Open Area Inlet Seal	1	each
52	Open Area Inlet Gasket	1	each
53	Open Area Inlet Nut	1	each
54	Open Area Inlet Washer	1	each
55	Open Area Inlet Bolt	1	each
56	Open Area Inlet Key	1	each
57	Open Area Inlet Pin	1	each
58	Open Area Inlet Rivet	1	each
59	Open Area Inlet Seal	1	each
60	Open Area Inlet Gasket	1	each
61	Open Area Inlet Nut	1	each
62	Open Area Inlet Washer	1	each
63	Open Area Inlet Bolt	1	each
64	Open Area Inlet Key	1	each
65	Open Area Inlet Pin	1	each
66	Open Area Inlet Rivet	1	each
67	Open Area Inlet Seal	1	each
68	Open Area Inlet Gasket	1	each
69	Open Area Inlet Nut	1	each
70	Open Area Inlet Washer	1	each
71	Open Area Inlet Bolt	1	each
72	Open Area Inlet Key	1	each
73	Open Area Inlet Pin	1	each
74	Open Area Inlet Rivet	1	