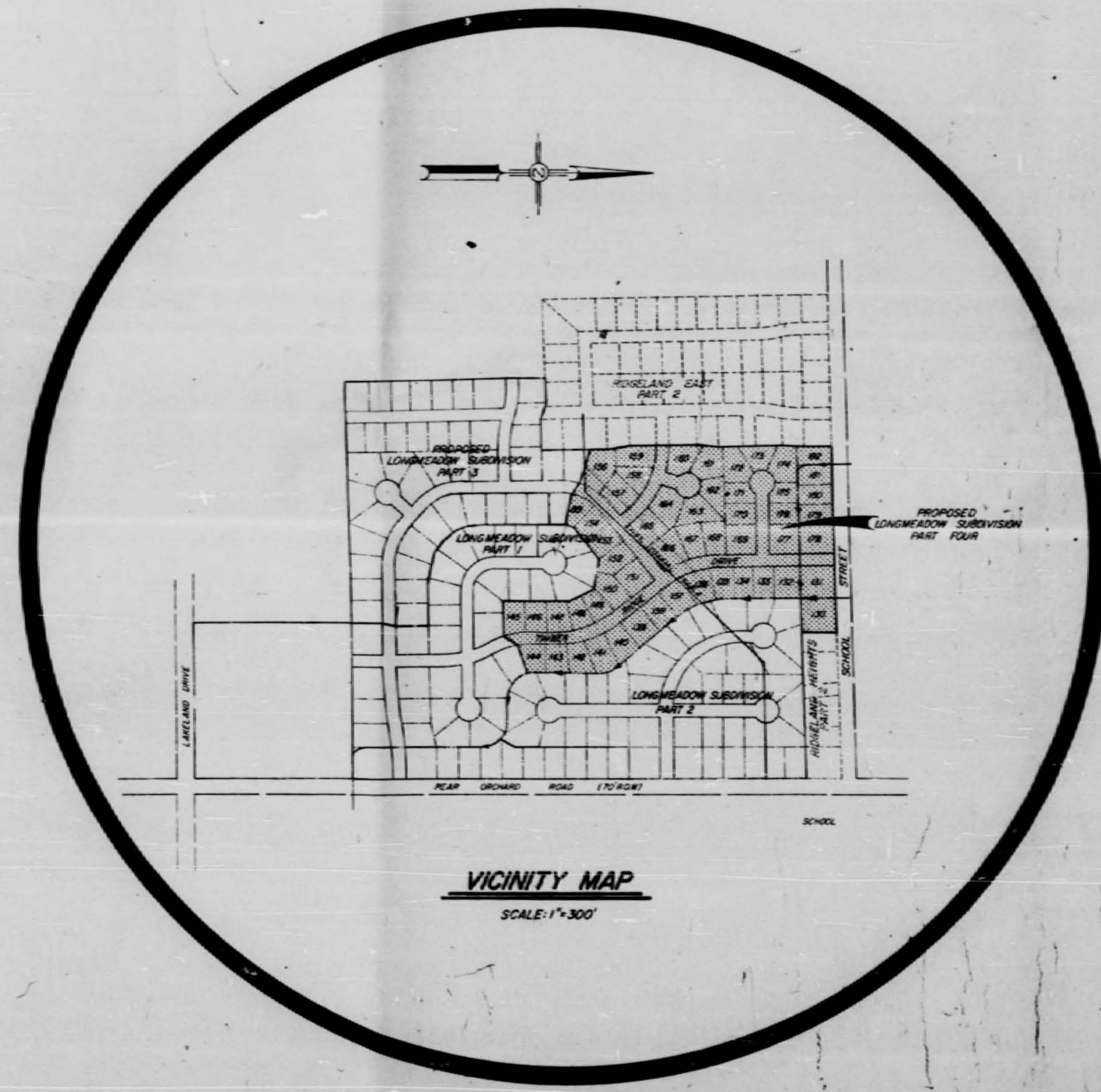


LONGMEADOW SUBDIVISION PART FOUR

**BAILEY & BAILEY, INC
OWNER & DEVELOPER**



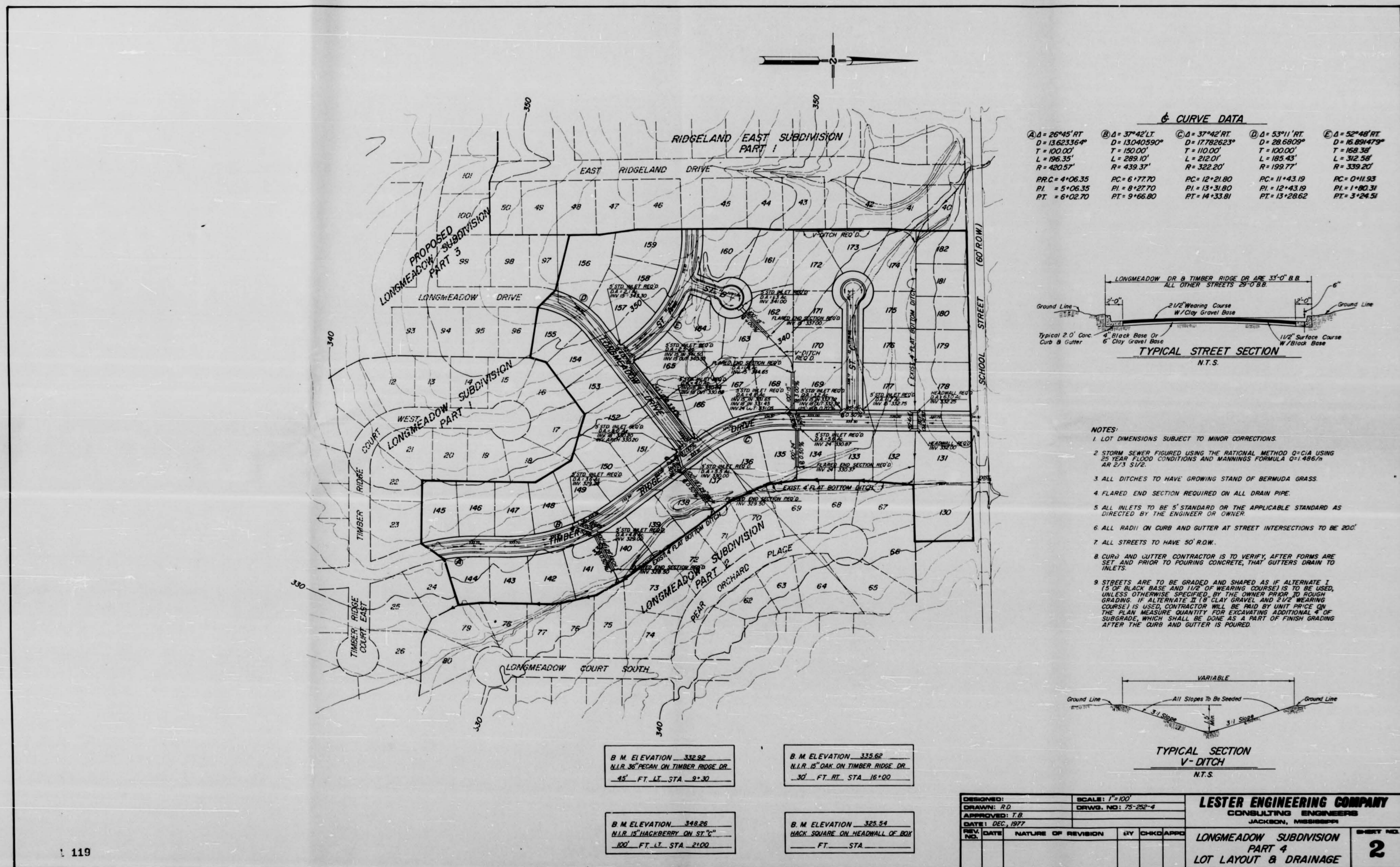
CONTENTS

<u>SHEET</u>	<u>DESCRIPTION</u>
1	FRONT SHEET
2	LOT LAYOUT & DRAINAGE
3	WATER & SEWER LAYOUT
4-7	PLAN & PROFILE SHEETS
8	CONSTRUCTION DETAILS FOR WATER DISTRIBUTION SYSTEM
9	CONSTRUCTION DETAILS FOR SEWER APPURTENANCES
10	STANDARD STORM SEWER APPURTENANCES

APPROVED 10-11-79
Bill Wall
BUREAU OF ENGINEERING & SURVEYING
MEMPHIS, TENNESSEE

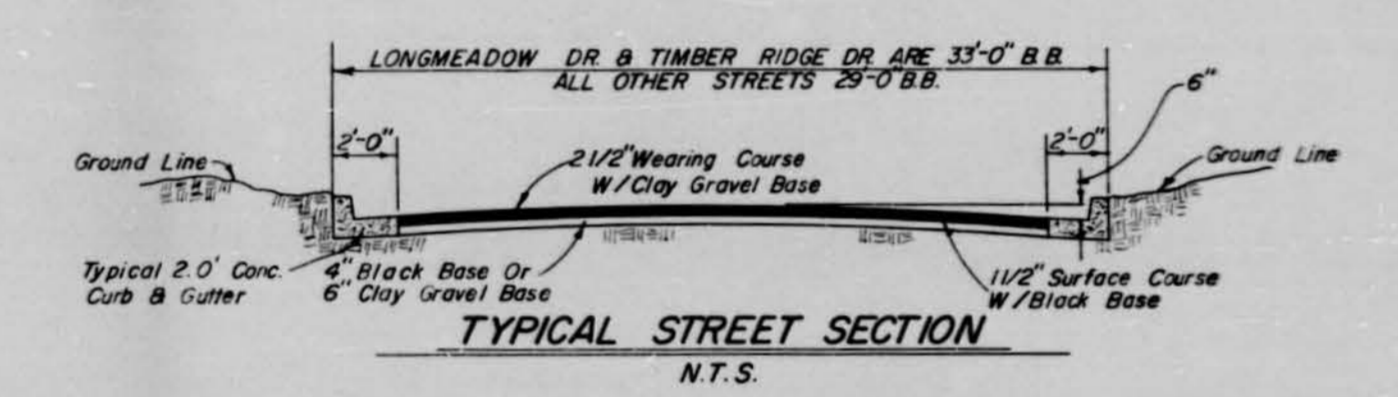
**LESTER ENGINEERING CO.
JACKSON, MISS.**

3873

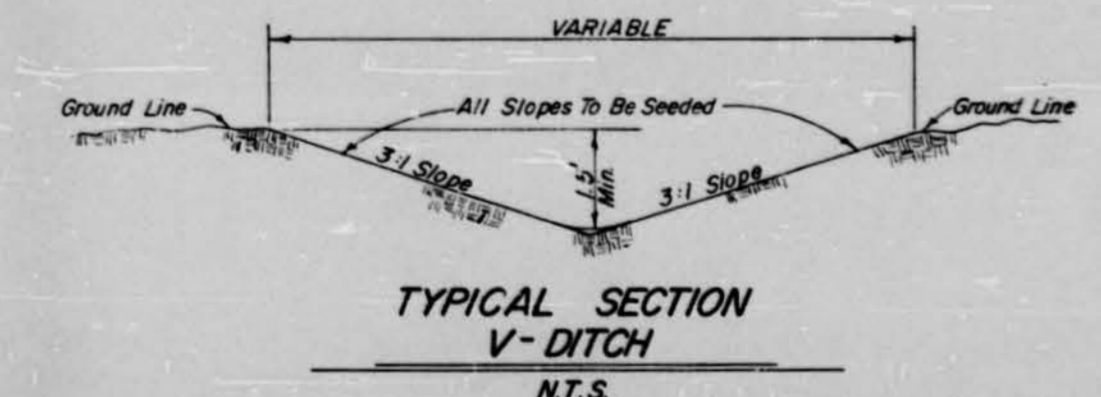


6 CURVE DATA

Curve	Δ	D	T	L	R	PRC	PI	PT
A	26°45' RT	13623.9'	100.00'	289.35'	420.57'	4.0635	5.0635	6.0270
B	37°42' LT	13040.990'	100.00'	289.35'	439.37'	6.7770	8.2770	9.6680
C	37°42' RT	17782.623'	100.00'	289.35'	322.20'	12.2180	13.3180	14.3381
D	53°11' RT	28680.9'	100.00'	189.43'	322.20'	11.4319	12.4319	13.2862
E	52°48' RT	16894.73'	168.38'	312.58'	339.20'	0.1183	1.18031	3.2451



- NOTES:**
1. LOT DIMENSIONS SUBJECT TO MINOR CORRECTIONS.
 2. STORM SEWER FIGURED USING THE RATIONAL METHOD Q=CIA USING 25-YEAR FLOOD CONDITIONS AND MANNINGS FORMULA Q=1.4867A^{1.4867}S^{0.4867}.
 3. ALL DITCHES TO HAVE GROWING STAND OF BERMUDA GRASS.
 4. FLARED END SECTION REQUIRED ON ALL DRAIN PIPE.
 5. ALL INLETS TO BE 5" STANDARD OR THE APPLICABLE STANDARD AS DIRECTED BY THE ENGINEER OR OWNER.
 6. ALL RADII ON CURB AND GUTTER AT STREET INTERSECTIONS TO BE 20'.
 7. ALL STREETS TO HAVE 50' R.O.W.
 8. CURB AND GUTTER CONTRACTOR IS TO VERIFY, AFTER FORMS ARE SET AND PRIOR TO POURING CONCRETE, THAT GUTTERS DRAIN TO INLETS.
 9. STREETS ARE TO BE GRADED AND SHAPED AS IF ALTERNATE I (5" OF BLACK BASE AND 1 1/2" OF WEARING COURSE) IS TO BE USED, UNLESS OTHERWISE SPECIFIED BY THE OWNER PRIOR TO PROCEEDING. IF ALTERNATE II (6" CLAY GRAVEL AND 2 1/2" WEARING COURSE) IS USED, CONTRACTOR WILL BE PAID BY UNIT PRICE ON THE PLAN MEASURE QUANTITY FOR EXCAVATING ADDITIONAL 4" OF SUBGRADE, WHICH SHALL BE DONE AS A PART OF FINISH GRADING AFTER THE CURB AND GUTTER IS POURED.



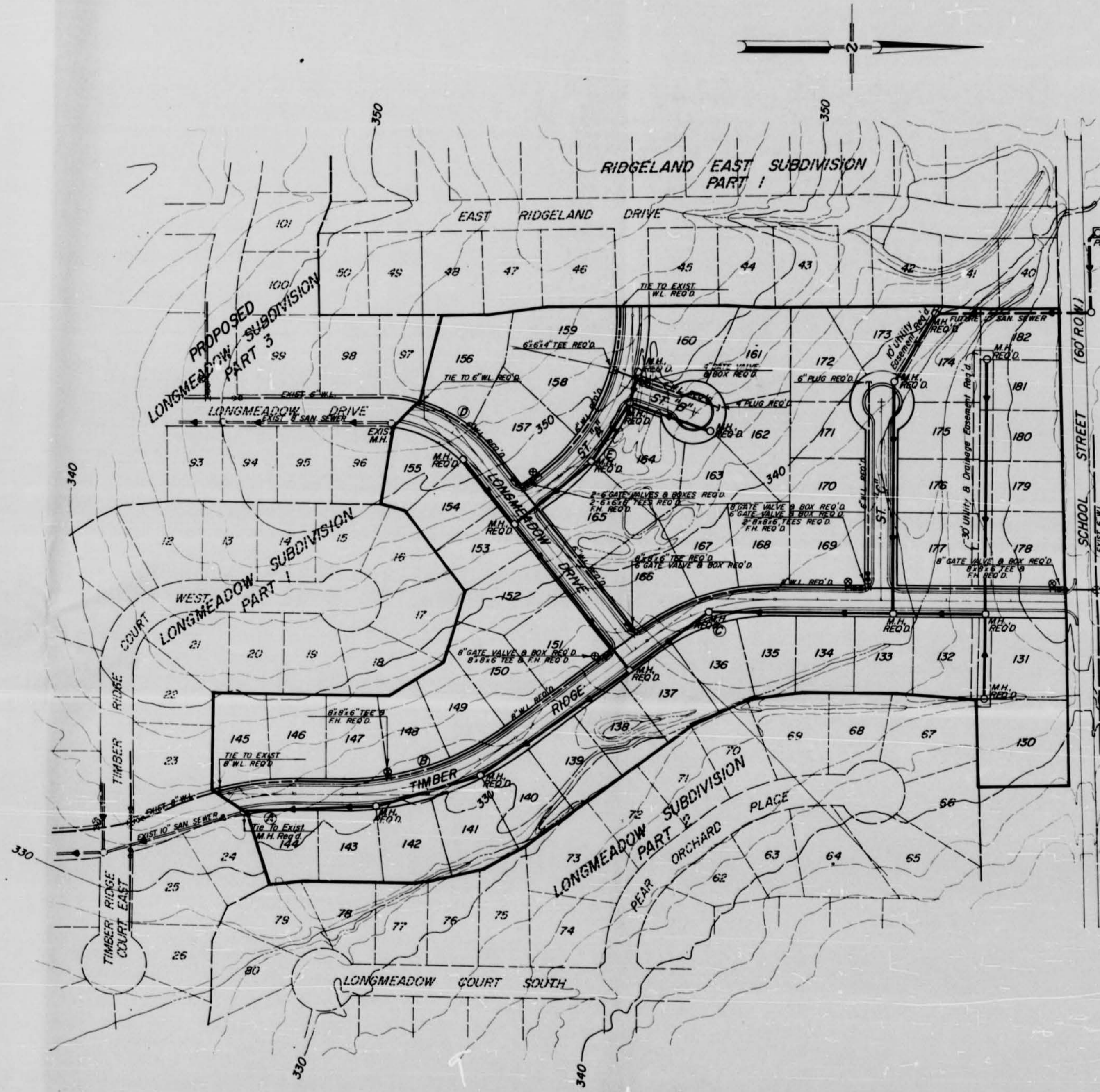
B.M. ELEVATION 332.92
N.I.R. 36" PECAN ON TIMBER RIDGE DR.
45' FT. LT. STA. 2+30

B.M. ELEVATION 332.62
N.I.R. 12" OAK ON TIMBER RIDGE DR.
30' FT. RT. STA. 18+00

B.M. ELEVATION 348.26
N.I.R. 12" HACKBERRY ON ST. 3"
100' FT. LT. STA. 2+00

B.M. ELEVATION 325.54
BACK SQUARE ON HEADWALL OF BOX
FT. STA.

DESIGNED: J.D.	SCALE: 1"=100'	LESTER ENGINEERING COMPANY CONSULTING ENGINEERS JACKSON, MISSISSIPPI
CHECKED: J.B.	DRWG. NO. 75-252-4	
DATE: DEC. 1977		LONGMEADOW SUBDIVISION PART 4 LOT LAYOUT & DRAINAGE
REV. NO.	NATURE OF REVISION	
		2



CURVE DATA

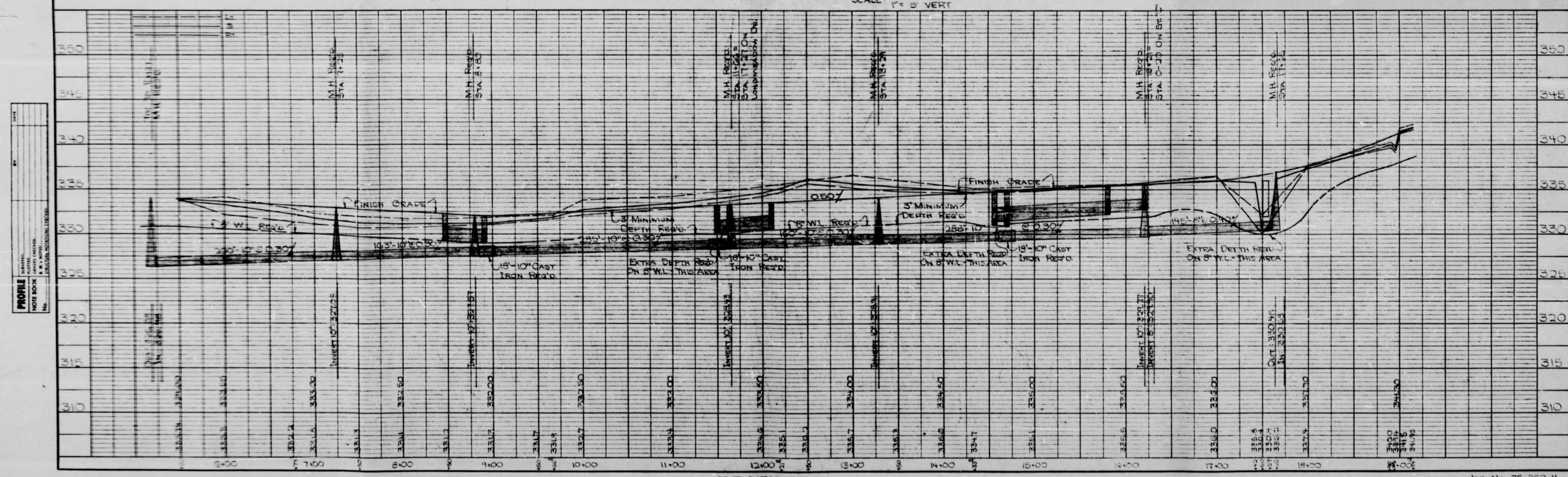
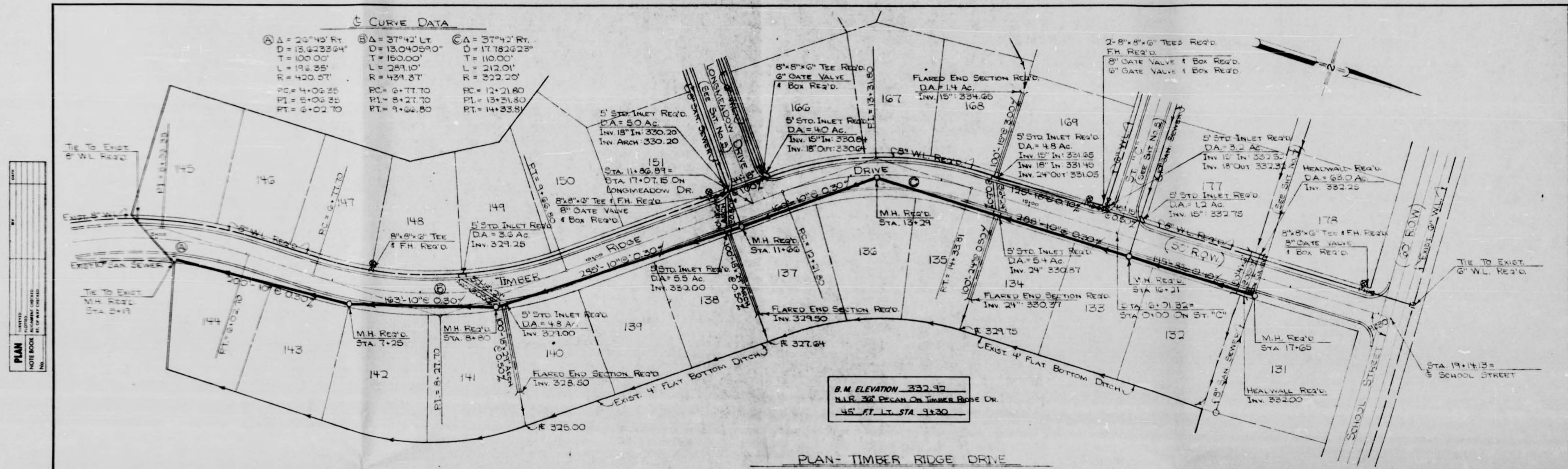
Curve	Angle	Diameter	Tangent	Length	Radius	PC	PI	PT
A	26°45' RT	13623.64'	100.00'	106.35'	420.57'	4+06.35	5+06.35	6+02.70
B	37°42' LT	13040.59'	100.00'	289.01'	439.37'	6+77.70	8+27.70	9+66.80
C	37°42' RT	17782.63'	100.00'	212.01'	322.20'	12+21.80	13+31.80	14+33.81
D	53°11' RT	28680.99'	100.00'	185.43'	199.77'	11+43.19	12+43.19	13+28.62
E	52°48' RT	16894.79'	100.00'	312.56'	339.20'	0+11.93	1+80.31	3+24.51

- NOTES:**
- FOR WATER DISTRIBUTION SYSTEM CONSTRUCTION DETAILS SEE SHEET NO. 2.
 - FOR SANITARY SEWER CONSTRUCTION DETAILS SEE SHEET NO. 3.
 - ALL VALVES TO BE LOCATED BEHIND STREET CURB UNLESS OTHERWISE DIRECTED BY THE ENGINEER.
 - WATER & SEWER SERVICES TO BE LOCATED NEAR CENTER OF LOTS.
 - INSTALLATION OF SANITARY SEWER MAINS AND SERVICES WHEN A SEWER SERVICE LINE CROSSES ABOVE A WATER SUPPLY MAIN OR WITHIN 18" BELOW A WATER MAIN OR WITHIN 10' ON EITHER SIDE, THE SEWER SERVICE OR MAIN SHALL BE CAST IRON FOR A DISTANCE OF 10' ON EITHER SIDE OF THE WATER SUPPLY MAIN.

B.M. ELEVATION 332.92 N.I.R. 36" PEACH ON TIMBER RIDGE DR. 45' FT. LT. STA. 2+30	B.M. ELEVATION 335.62 N.I.R. 15" OAK ON TIMBER RIDGE DR. 37' FT. RT. STA. 16+00
B.M. ELEVATION 348.26 N.I.R. 6" HICKORY ON S.W. COR. 100' FT. LT. STA. 2+00	B.M. ELEVATION 325.58 BACK SQUARE ON HEADWALL OF BOX FT. STA.

DESIGNED: _____	SCALE: 1"=100'	LESTER ENGINEERING COMPANY CONSULTING ENGINEERS JACKSON, MISSISSIPPI	SHEET NO. 3
DRAWN: P.D.	DRWD. NO: 75-252-4		
APPROVED: T.B.			
DATE: DEC, 1977		LONGMEADOW SUBDIVISION PART 4 WATER & SEWER LAYOUT	
REV. DATE	NATURE OF REVISION	BY	CHKD/APP

JOB NO. 75-252-4
SHT. NO. 3 OF 10



PLAN
NOTES:
1. SEE PLAN FOR ALL DIMENSIONS.
2. SEE SPECIFICATIONS FOR ALL MATERIALS.

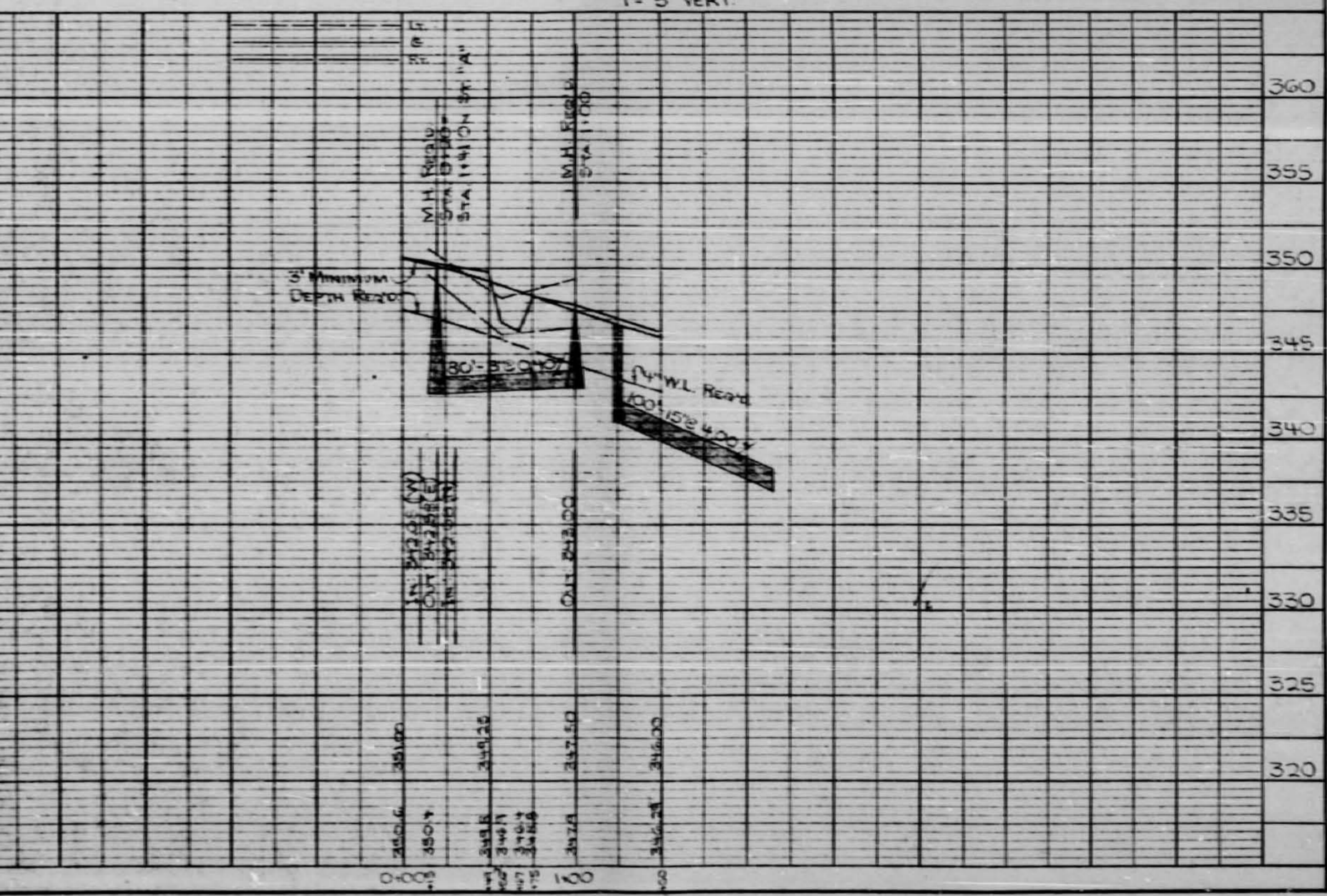
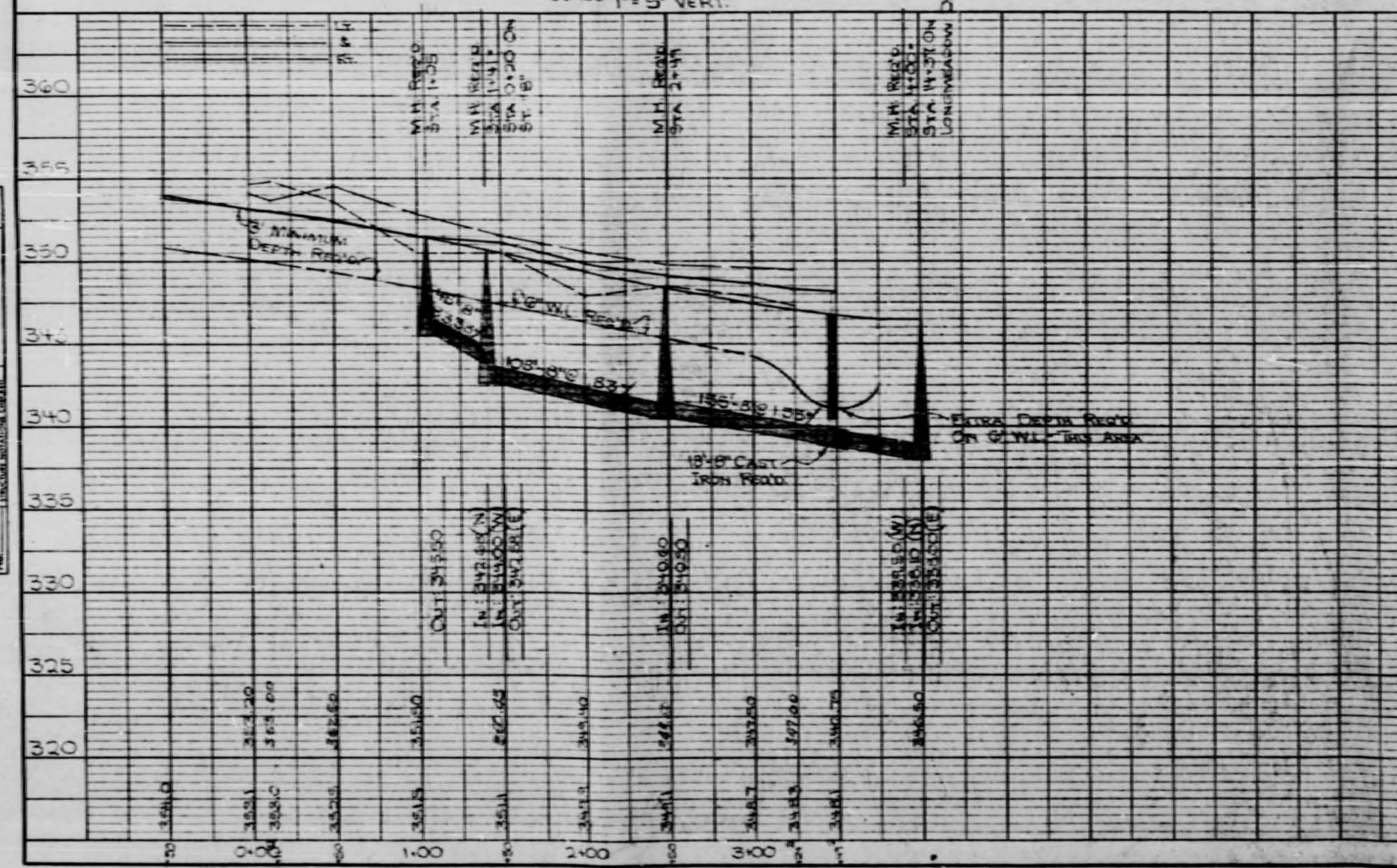
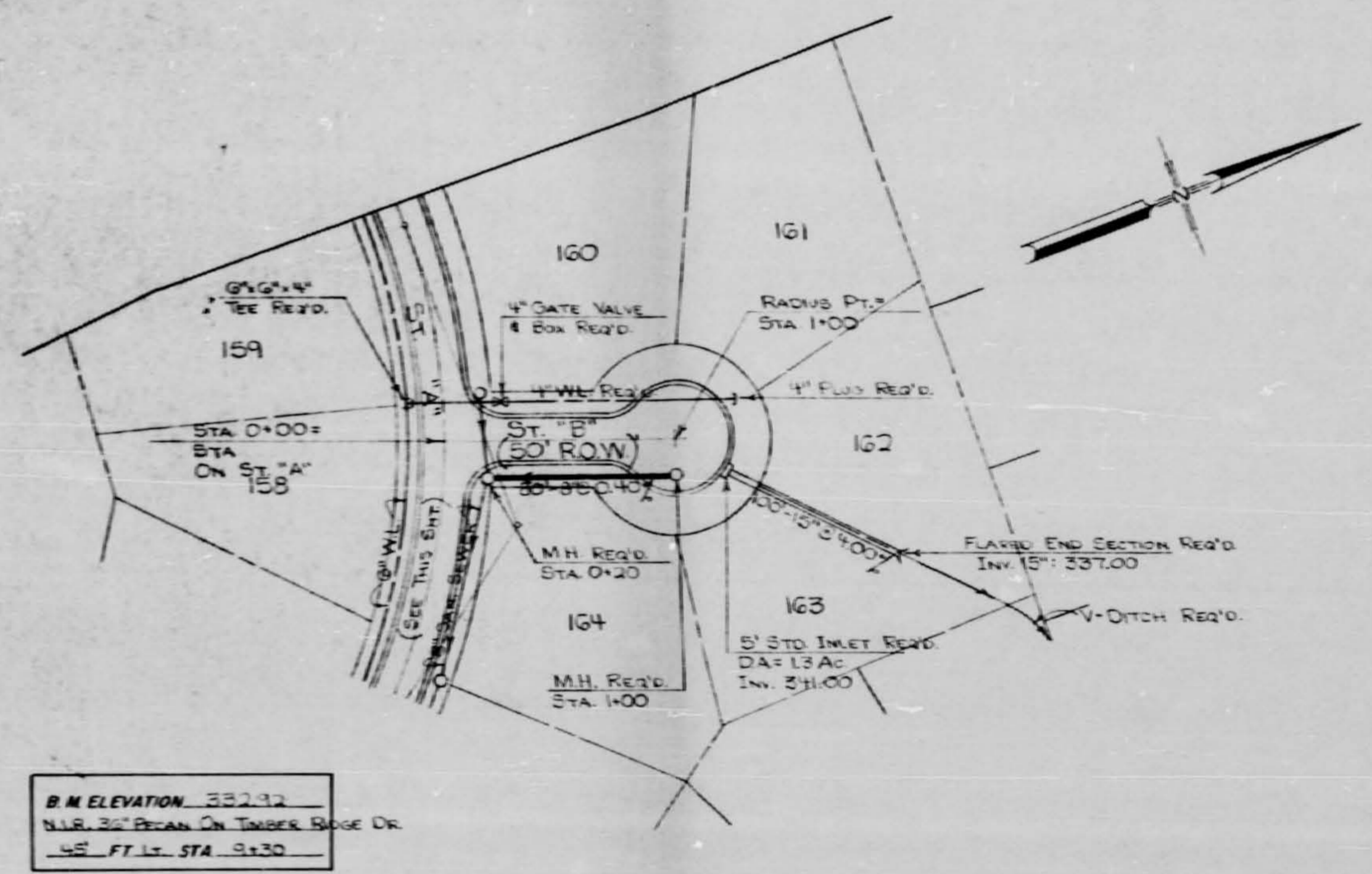
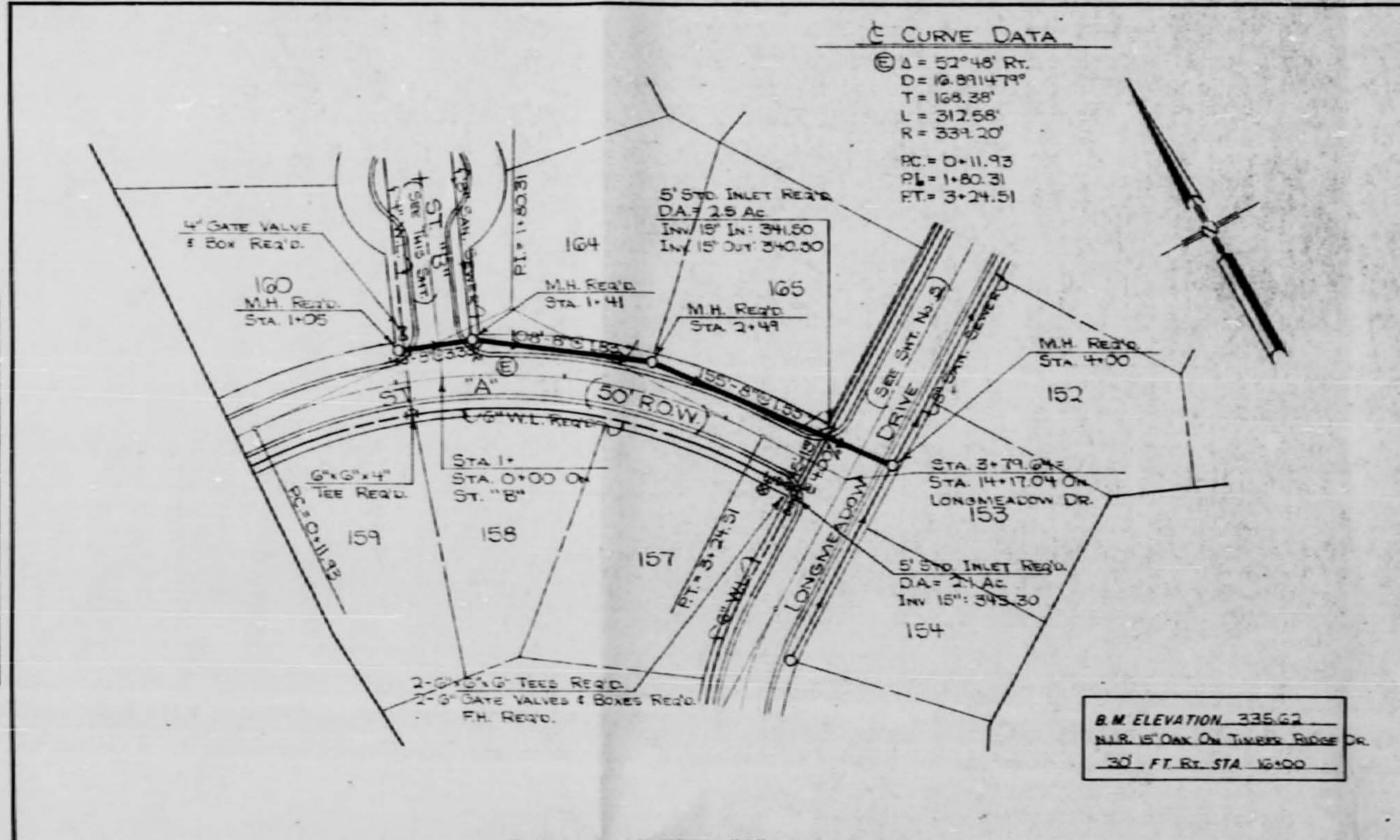
PROFILE
NOTES:
1. SEE PLAN FOR ALL DIMENSIONS.
2. SEE SPECIFICATIONS FOR ALL MATERIALS.

PLAN	DATE	BY
NOTED		
REVISIONS		
NO.	DATE	DESCRIPTION

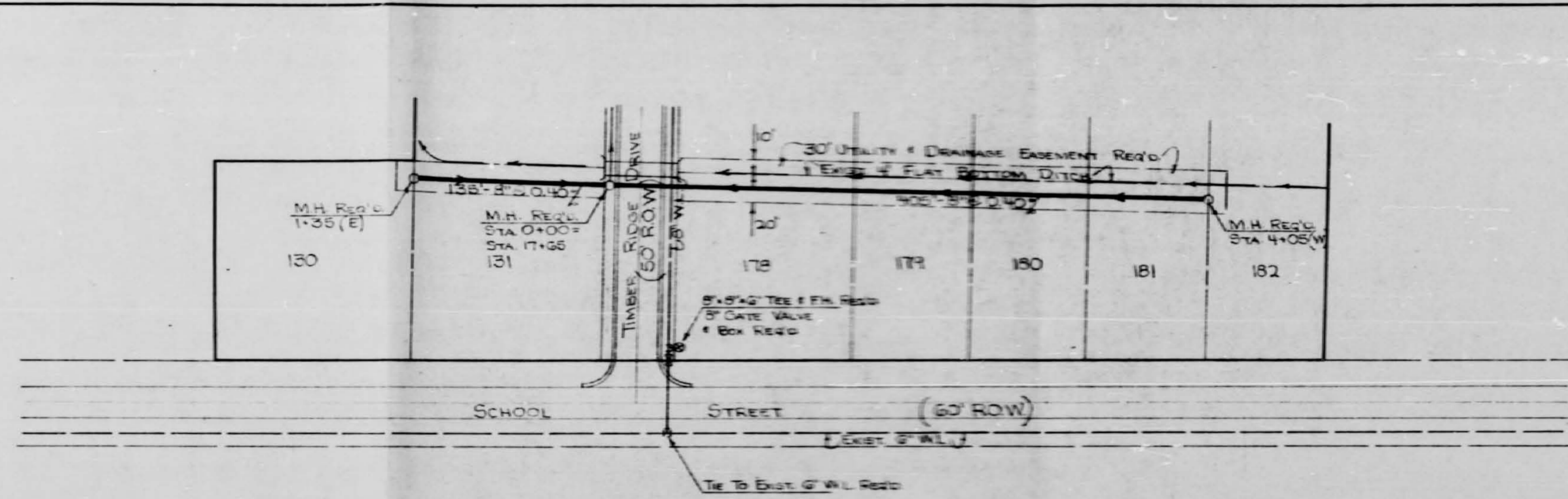
PROFILE	DATE	BY
NOTED		
REVISIONS		
NO.	DATE	DESCRIPTION

C CURVE DATA

$\Delta = 52^{\circ}45' R$
 $D = 19.91473'$
 $T = 154.28'$
 $L = 212.58'$
 $S = 231.20'$
 $PC = 0+11.93$
 $PT = 1+80.31$
 $PI = 3+24.51$



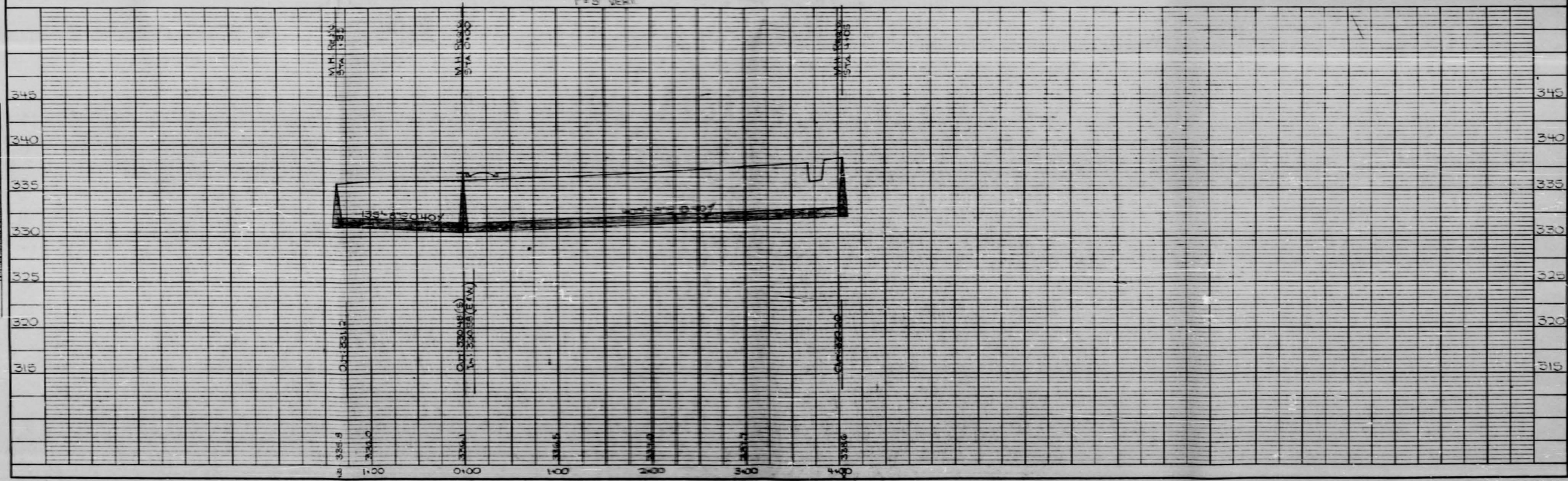
PLAN
 DATE: _____
 DRAWN BY: _____
 CHECKED BY: _____
 TITLE: _____
 SHEET NO. _____

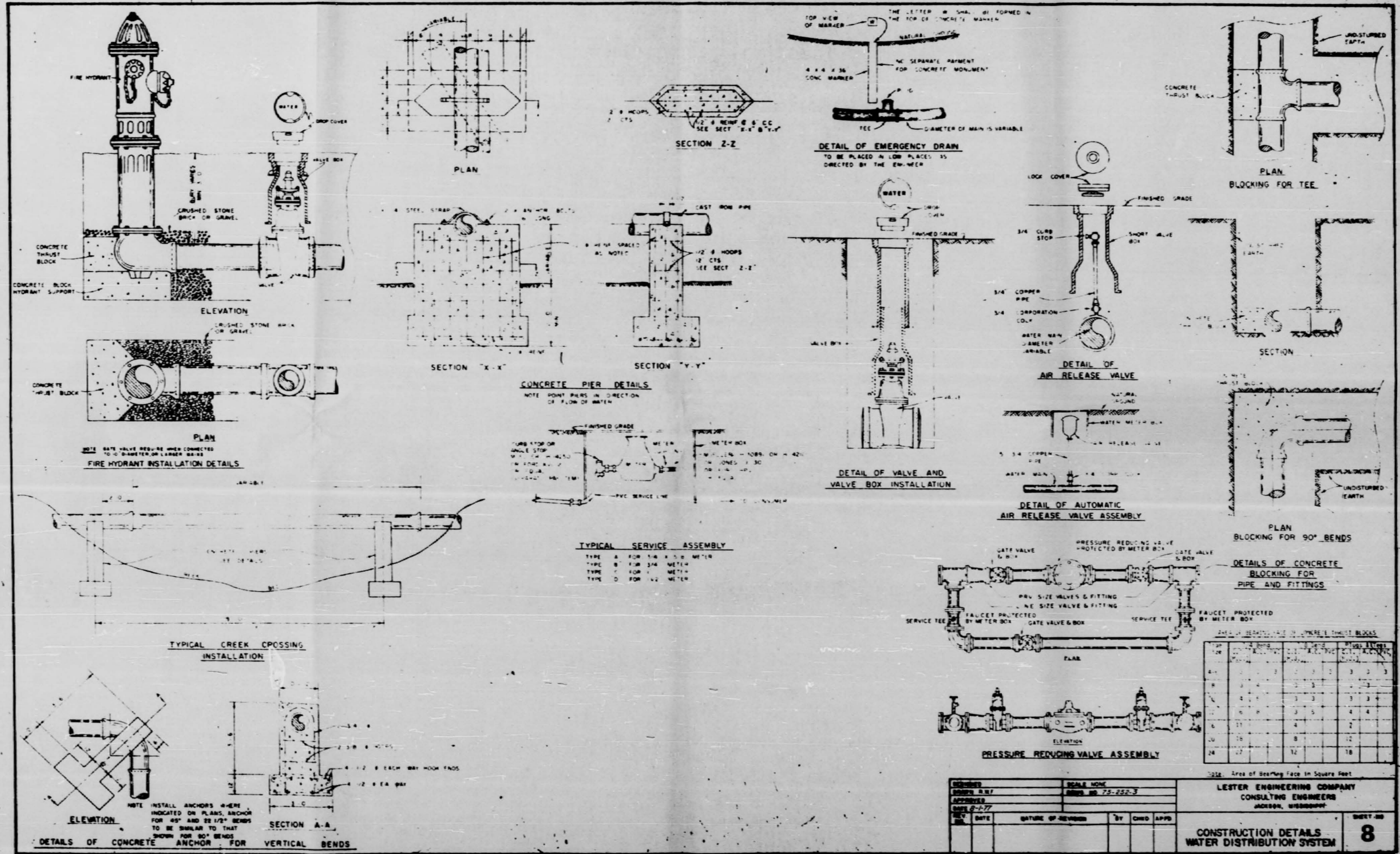


PLAN - 5' SAN SEWER SERVING LOTS ON SCHOOL STREET

SCALE: 1" = 50' HORIZ
 1" = 5' VERT

PROFILE
 DATE: _____
 DRAWN BY: _____
 CHECKED BY: _____
 TITLE: _____
 SHEET NO. _____





TYPICAL SERVICE ASSEMBLY

TYPE A FOR 1/2" x 1/2" METAL
 TYPE B FOR 3/4" METAL
 TYPE C FOR 1" METAL
 TYPE D FOR 1 1/2" METAL

SIZE	AREA OF OPENING FACE IN SQUARE FEET	WEIGHT IN POUNDS
1/2"	0.196	0.3
3/4"	0.442	0.7
1"	0.785	1.2
1 1/2"	1.767	2.8
2"	3.142	4.7
2 1/2"	4.909	7.1
3"	7.069	10.0
3 1/2"	9.621	13.5
4"	12.566	17.6
4 1/2"	15.904	22.3
5"	19.635	27.5
5 1/2"	23.758	33.2
6"	28.274	39.5
6 1/2"	33.183	46.3
7"	38.485	53.6
7 1/2"	44.179	61.4
8"	50.265	69.7
8 1/2"	56.746	78.5
9"	63.617	87.8
9 1/2"	70.883	97.6
10"	78.540	107.9
10 1/2"	86.593	118.7
11"	95.033	129.9
11 1/2"	103.873	141.6
12"	113.100	153.8
12 1/2"	122.719	166.4
13"	132.731	179.5
13 1/2"	143.141	193.0
14"	153.940	207.0
14 1/2"	165.133	221.4
15"	176.725	236.3
15 1/2"	188.720	251.6
16"	201.120	267.3
16 1/2"	213.930	283.4
17"	227.169	300.0
17 1/2"	240.842	317.0
18"	255.969	334.5
18 1/2"	271.556	352.4
19"	287.613	370.8
19 1/2"	304.156	389.6
20"	321.196	408.9
20 1/2"	338.740	428.6
21"	356.799	448.8
21 1/2"	375.370	469.4
22"	394.464	490.5
22 1/2"	414.088	512.0
23"	434.253	534.0
23 1/2"	454.967	556.4
24"	476.232	579.3
24 1/2"	498.056	602.7
25"	520.440	626.6
25 1/2"	543.393	651.0
26"	566.916	675.9
26 1/2"	591.018	701.3
27"	615.700	727.2
27 1/2"	640.971	753.6
28"	666.832	780.5
28 1/2"	693.293	807.9
29"	720.364	835.8
29 1/2"	747.945	864.2
30"	776.147	893.1
30 1/2"	804.870	922.5
31"	834.224	952.4
31 1/2"	864.209	982.8
32"	894.836	1013.7
32 1/2"	926.005	1045.1
33"	957.817	1077.0
33 1/2"	990.272	1109.4
34"	1023.371	1142.3
34 1/2"	1057.015	1175.7
35"	1091.304	1209.6
35 1/2"	1126.248	1244.0
36"	1161.848	1278.9
36 1/2"	1197.504	1314.3
37"	1234.217	1350.2
37 1/2"	1271.987	1386.6
38"	1310.814	1423.5
38 1/2"	1350.700	1460.9
39"	1391.645	1498.8
39 1/2"	1433.650	1537.2
40"	1476.725	1576.1
40 1/2"	1520.871	1615.5
41"	1566.088	1655.4
41 1/2"	1612.367	1695.8
42"	1659.719	1736.7
42 1/2"	1708.144	1778.1
43"	1757.643	1819.9
43 1/2"	1808.217	1862.2
44"	1858.867	1905.0
44 1/2"	1910.593	1948.4
45"	1963.391	1995.3
45 1/2"	2017.262	2042.7
46"	2072.207	2090.6
46 1/2"	2128.227	2139.0
47"	2185.322	2187.9
47 1/2"	2243.493	2237.3
48"	2303.741	2288.2
48 1/2"	2365.067	2338.6
49"	2427.472	2390.5
49 1/2"	2490.958	2442.9
50"	2555.525	2495.8
50 1/2"	2621.174	2549.2
51"	2687.907	2603.1
51 1/2"	2755.725	2657.5
52"	2824.629	2712.4
52 1/2"	2894.618	2767.8
53"	2965.694	2823.7
53 1/2"	3037.858	2880.1
54"	3111.111	2937.0
54 1/2"	3185.454	2994.4
55"	3260.887	3052.3
55 1/2"	3337.411	3110.7
56"	3414.926	3169.6
56 1/2"	3492.923	3229.0
57"	3572.422	3288.9
57 1/2"	3651.917	3349.3
58"	3732.411	3410.2
58 1/2"	3813.905	3471.6
59"	3896.400	3533.5
59 1/2"	3980.896	3595.9
60"	4066.994	3658.8
60 1/2"	4154.594	3722.2
61"	4243.697	3786.1
61 1/2"	4334.304	3850.5
62"	4426.517	3915.4
62 1/2"	4519.237	3980.8
63"	4613.566	4046.7
63 1/2"	4708.504	4113.1
64"	4805.053	4180.0
64 1/2"	4902.214	4247.4
65"	4999.987	4315.3
65 1/2"	5098.573	4383.7
66"	5198.972	4452.6
66 1/2"	5299.975	4522.0
67"	5301.583	4591.9
67 1/2"	5404.197	4662.3
68"	5507.918	4733.2
68 1/2"	5611.766	4804.6
69"	5717.733	4876.5
69 1/2"	5824.719	4948.9
70"	5932.834	5021.8
70 1/2"	6041.980	5095.2
71"	6152.259	5169.1
71 1/2"	6263.573	5243.5
72"	6375.982	5318.4
72 1/2"	6489.507	5393.8
73"	6605.158	5469.7
73 1/2"	6721.846	5546.1
74"	6839.672	5623.0
74 1/2"	6958.627	5700.4
75"	7077.712	5778.3
75 1/2"	7197.837	5856.7
76"	7318.997	5935.6
76 1/2"	7440.203	6015.0
77"	7573.670	6094.9
77 1/2"	7698.141	6175.3
78"	7815.320	6256.2
78 1/2"	7972.619	6337.6
79"	8091.528	6419.5
79 1/2"	8252.947	6501.9
80"	8375.877	6584.8
80 1/2"	8539.418	6668.2
81"	8663.571	6752.1
81 1/2"	8829.727	6836.5
82"	8956.994	6921.4
82 1/2"	9135.273	7006.8
83"	9274.684	7092.7
83 1/2"	9415.127	7179.1
84"	9556.712	7266.0
84 1/2"	9709.330	7353.4
85"	9863.082	7441.3
85 1/2"	10016.969	7529.7
86"	10173.002	7618.6
86 1/2"	10328.182	7708.0
87"	10485.499	7797.9
87 1/2"	10643.914	7888.3
88"	10804.438	7979.2
88 1/2"	10965.062	8070.6
89"	11127.797	8162.5
89 1/2"	11290.633	8254.9
90"	11455.760	8347.8
90 1/2"	11620.969	8441.2
91"	11788.370	8535.1
91 1/2"	11954.974	8629.5
92"	12123.692	8724.4
92 1/2"	12297.525	8819.8
93"	12463.503	8915.7
93 1/2"	12640.582	9012.1
94"	12819.830	9109.0
94 1/2"	12999.948	9206.4
95"	13182.746	9304.3
95 1/2"	13349.534	9402.7
96"	13508.303	9501.6
96 1/2"	13672.952	9601.0
97"	13840.592	9700.9
97 1/2"	13968.243	9801.3
98"	14119.985	9902.2
98 1/2"	14247.788	10003.6
99"	14316.542	10105.5
99 1/2"	14442.207	10207.9
100"	14517.783	10310.8

DESIGNED	SCALE NONE	LESTER ENGINEERING COMPANY CONSULTING ENGINEERS JACKSON, MISSISSIPPI		
DRAWN	FIG. NO. 75-252-3			
APPROVED		SHEET NO. 8		
DATE				
DATE	NATURE OF REVISION	BY	CHKD	APP'D

