

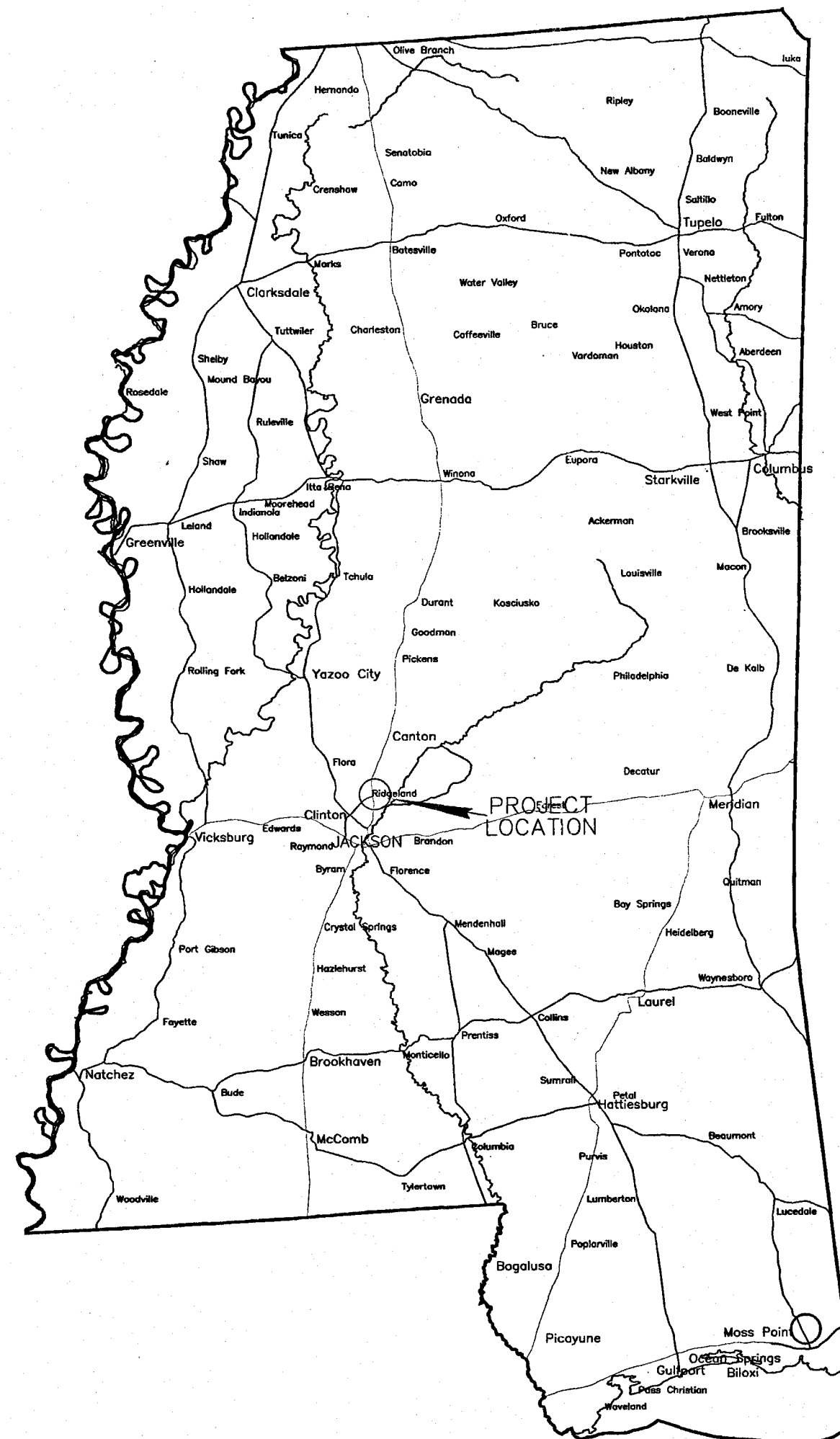
MAISON BLEU SUBDIVISION PHASE I - 33 LOTS

RIDGELAND, MISSISSIPPI

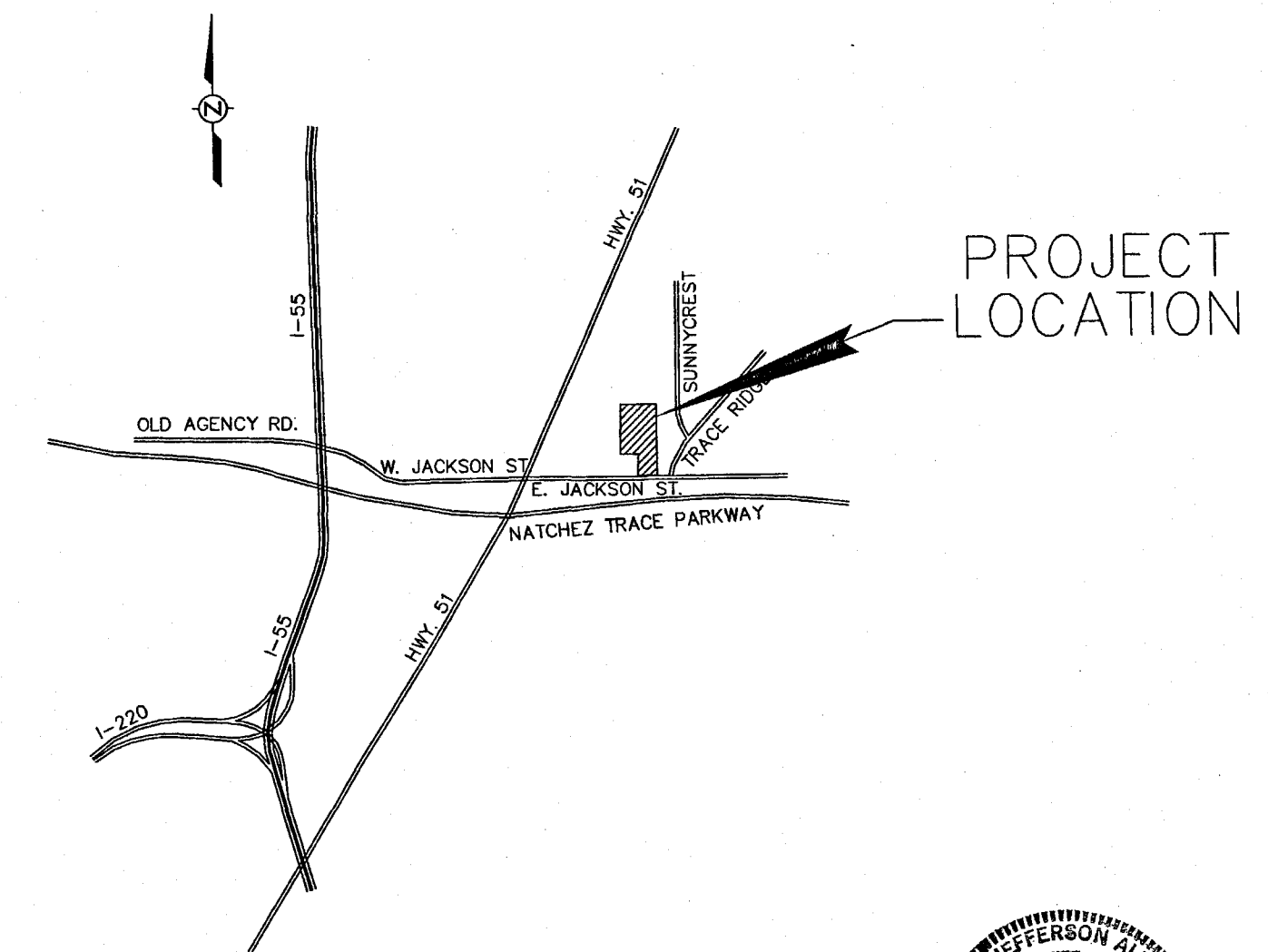
WATER, SEWER AND STREET CONSTRUCTION

RECORD DRAWINGS

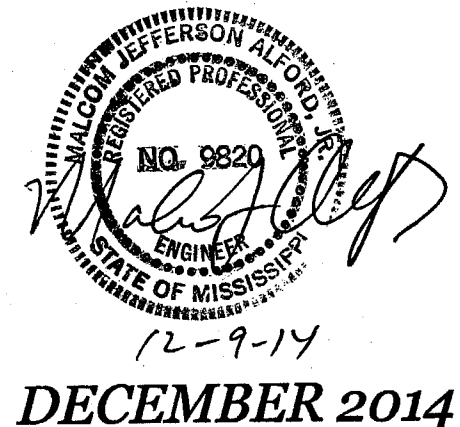
OWNER: SCM DEVELOPMENT, LLC
109 ROSEDOWNE DR.
MADISON MS 39110



LOCATION MAP
NOT TO SCALE



VICINITY MAP
NOT TO SCALE

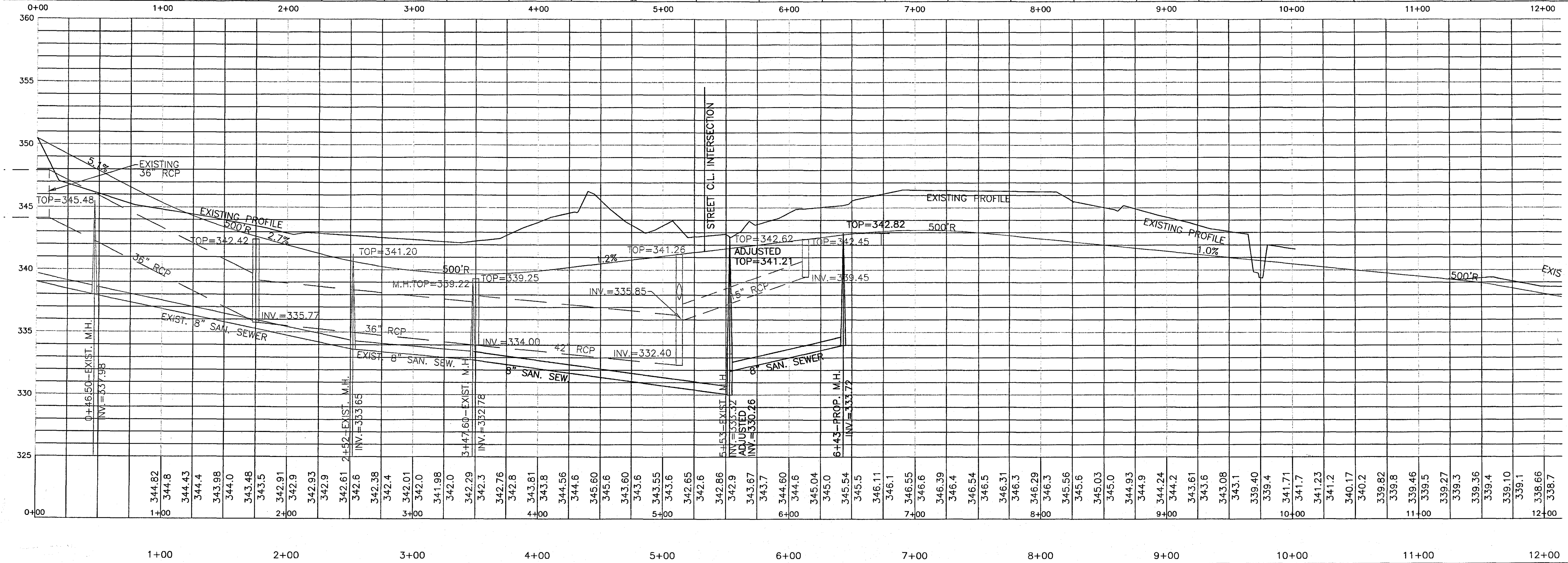
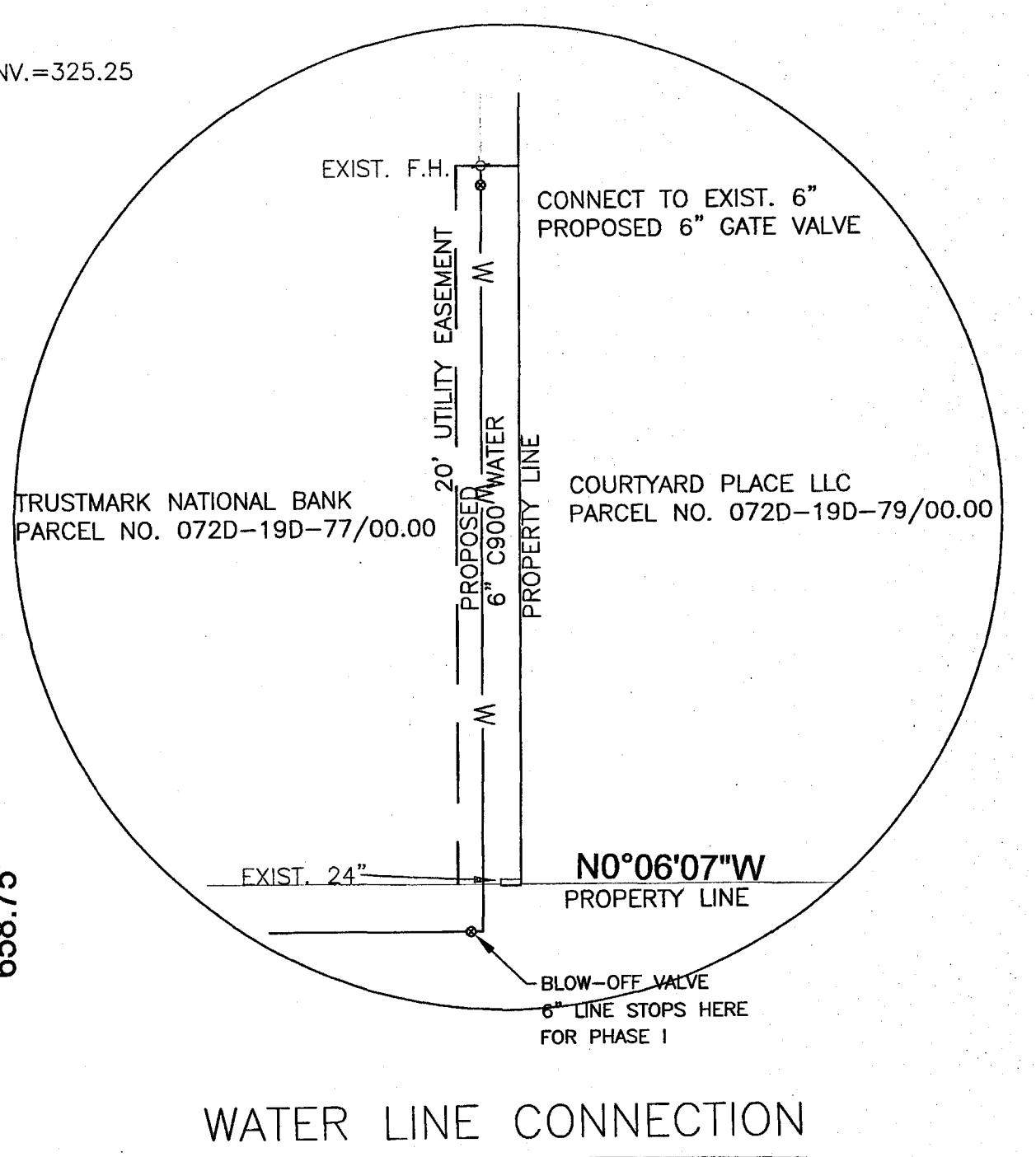
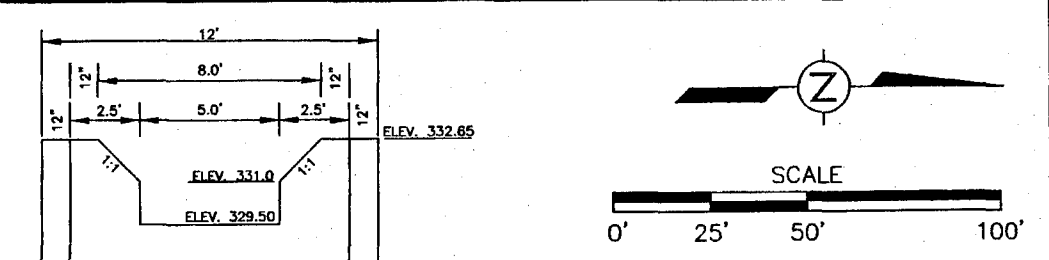
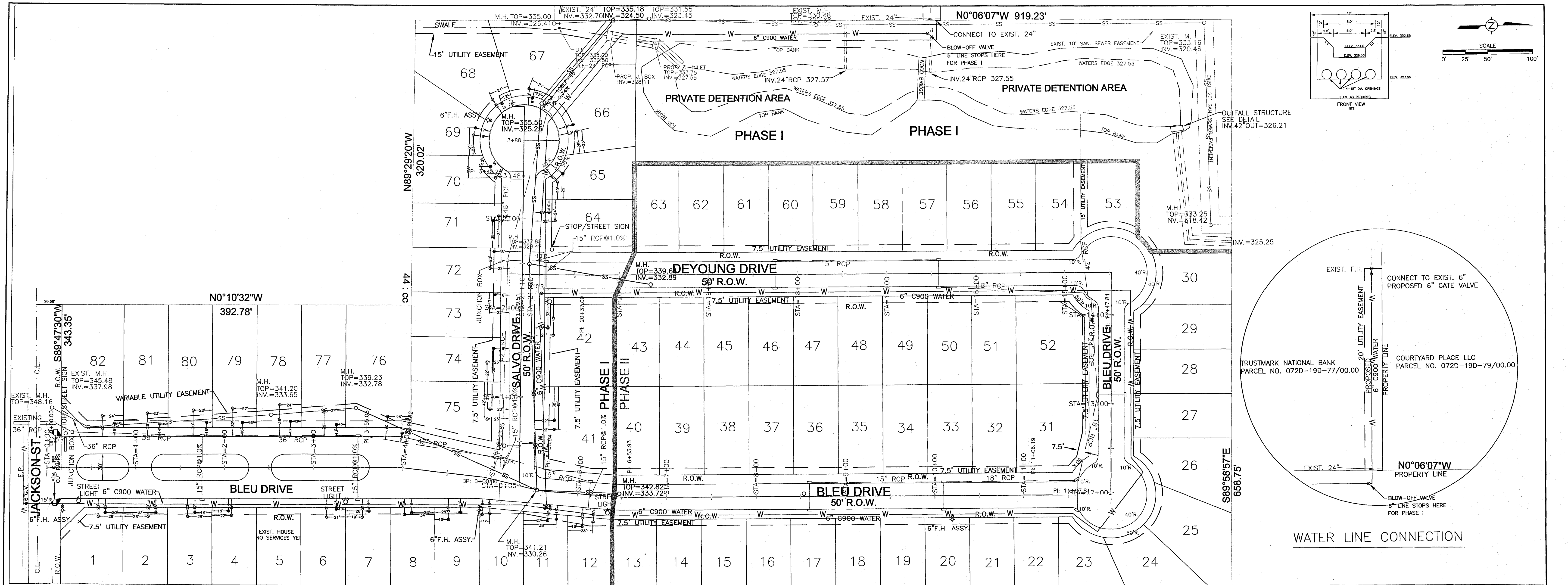


DRAWING INDEX

DRAWING NO.	DESCRIPTION
1	COVER SHEET
2	PLAN/PROFILE
3	PLAN/PROFILE
4	PLAN/PROFILE
5	WATER DETAILS
6	SEWER DETAILS
7	MISCELLANEOUS DETAILS

PWP-05059

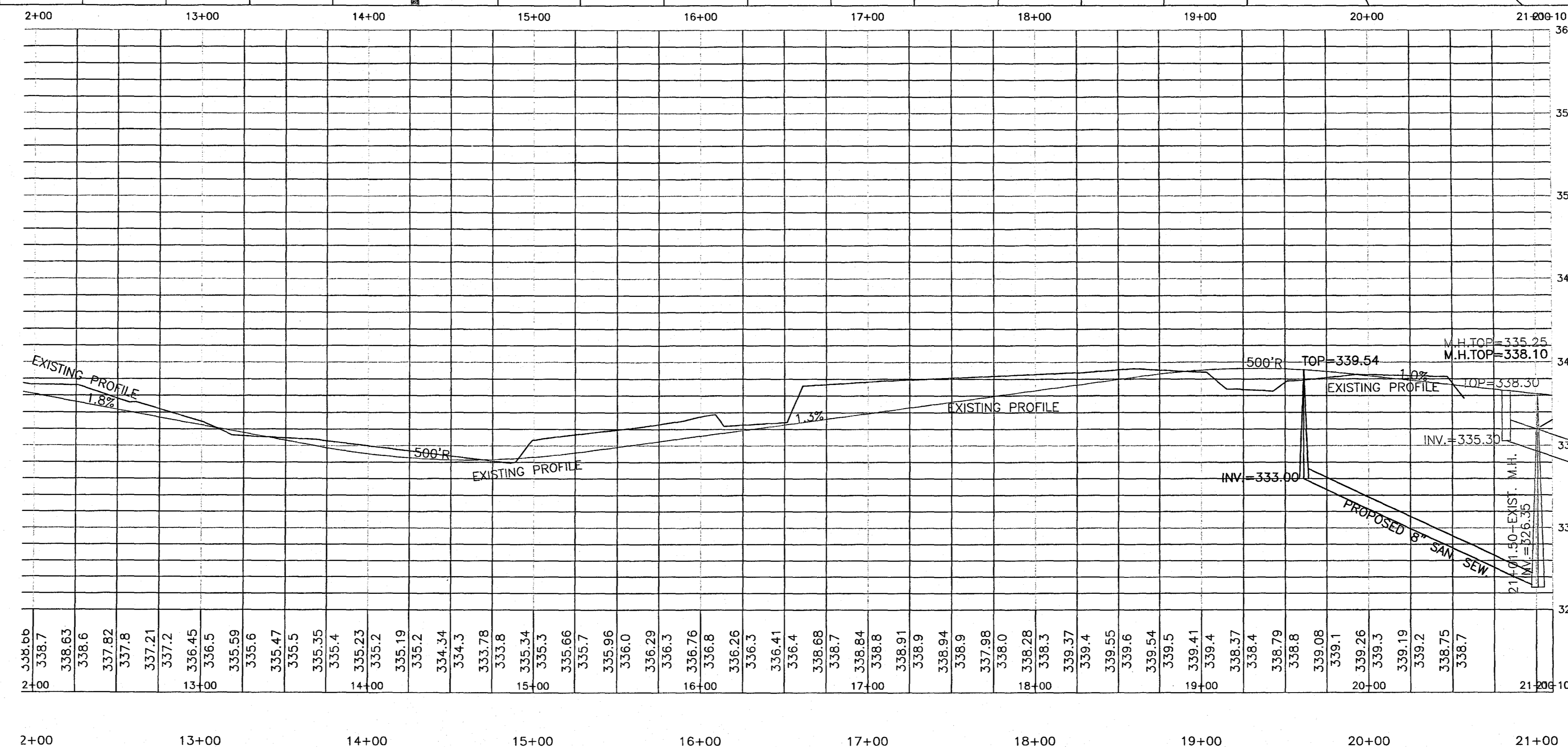
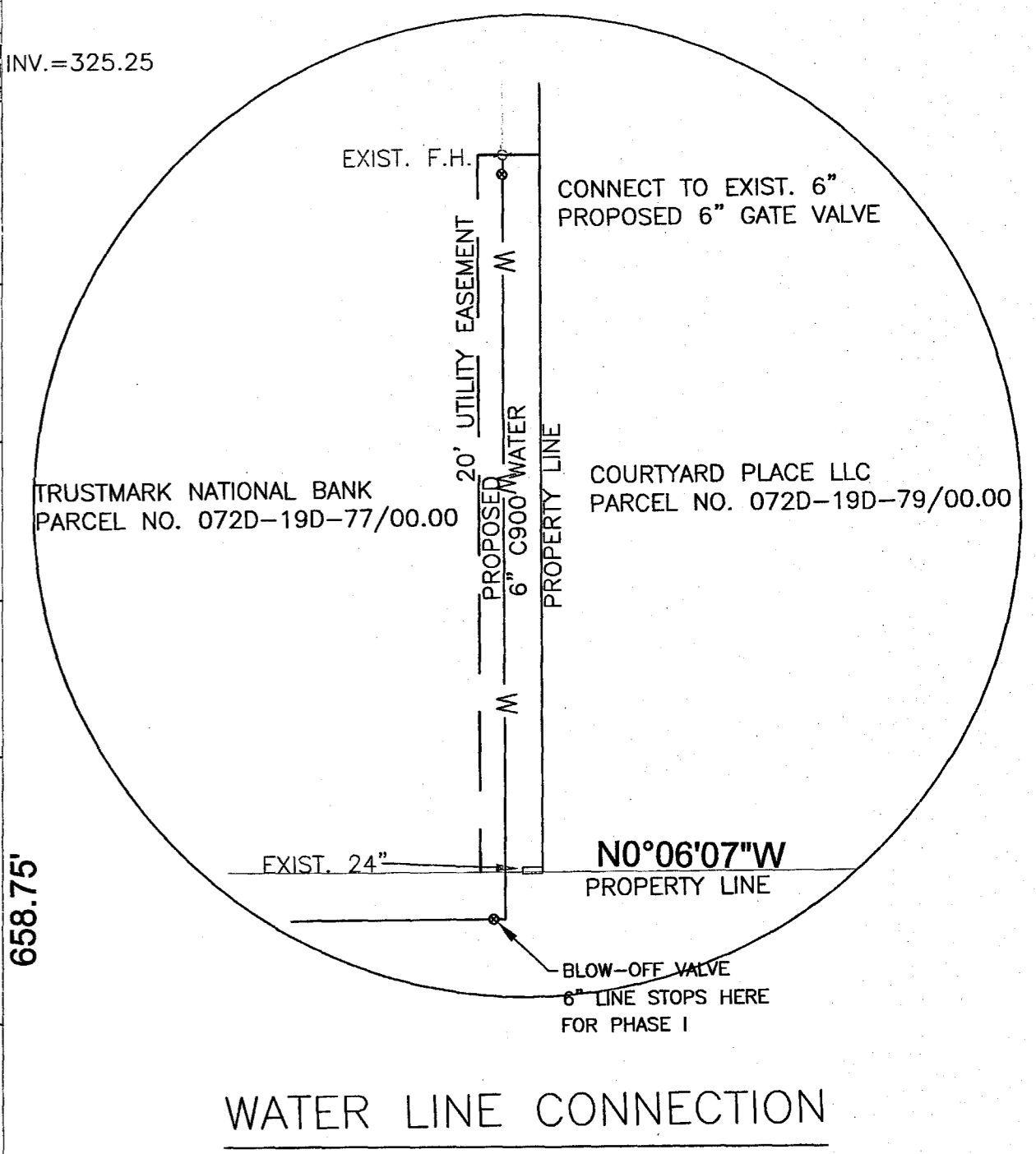
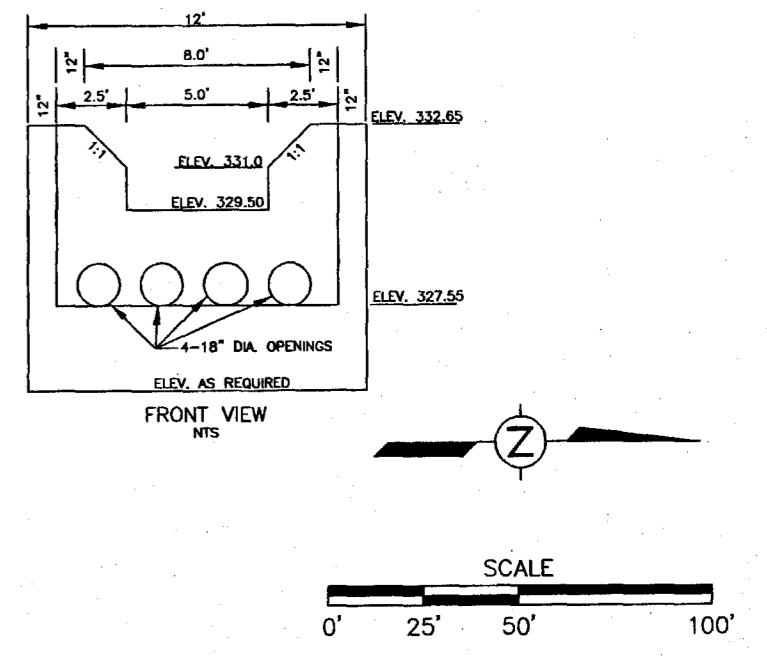
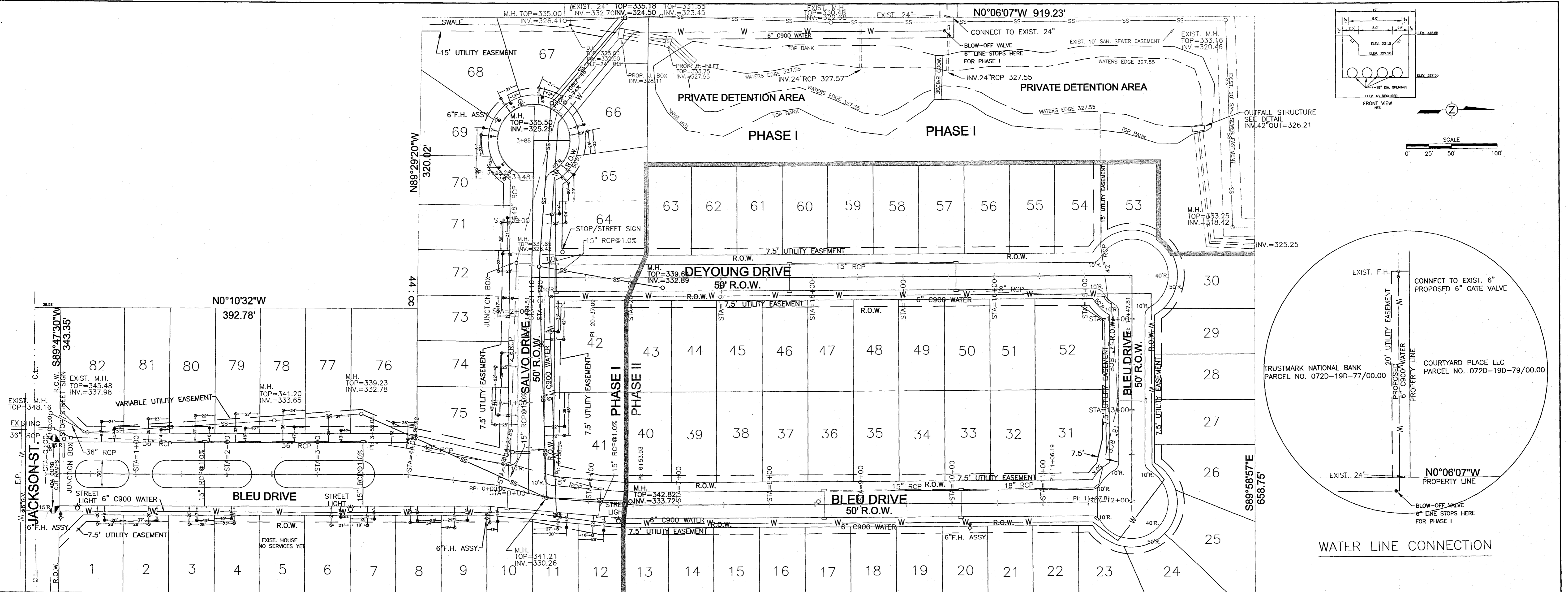
Alford and Associates
Consulting Engineers
7112 Suite B Siwell Road
Byram, Mississippi 39272



- NOTES
1. ALL LOTS SHALL HAVE 2010 ADA COMPLIANT SIDEWALKS CONSTRUCTED ALONG FRONT PROPERTY LINE (BOTH SIDES FOR CORNER LOTS).
 2. THIS PROPERTY IS SITUATED IN ZONE X ACCORDING TO FEMA MAP NOS. 28089C0567 AND 28089C0586 DATED 3/17/10.
 3. ALL UNDEVELOPED AREAS INSIDE SUBDIVISION BOUNDARY WILL BE CONSIDERED HOME OWNERS ASSOCIATION COMMON AREAS.
 4. ADA CURB CUT RAMPS TO BE INSTALLED BY CURB & GUTTER CONTRACTOR DURING STREET CONSTRUCTION.
 5. ADA CURB CUT RAMPS TO BE INSTALLED AT LOTS 11, 41, 42, 65, 72, 73 AND 75 FOR ACCESS TO SIDEWALKS. CURB CUTS AT LOTS 41 AND 75 SHALL BE RADIUS STYLE RAMP CUTS.
 6. NO SHARED WATER TAPS SHALL BE ALLOWED FOR WATER SERVICE CONNECTIONS.

REV.	DESCRIPTION OF REVISION	BY	REVISION DATE
5	REVISIONS	MJA	5/6/13
4	REVISIONS	MJA	4/22/13
3	REVISIONS	MJA	4/15/13
2	REVISIONS	MJA	3/19/13
1	REVISIONS	MJA	1/18/13
0	ISSUED FOR REVIEW	MJA	12/5/12
REV.	DESCRIPTION OF REVISION	BY	REVISION DATE

6 REVISIONS RECORD DRAWING MJA 6/7/13 MJA 10/8/14	SHOWN REVIEWED: M. ALFORD PROJECT MANAGER: M. ALFORD 12/5/12	Alford and Associates Consulting Engineers 7112 Suite B Siwell Road Byram, Mississippi 39272	PLAN/PROFILE RECORD DRAWING MAISON BLEU SUBDIVISION RIDGELAND, MISSISSIPPI	PROJECT No. CAD FILE NAME DRAWING 2 of 7
--	---	--	---	--

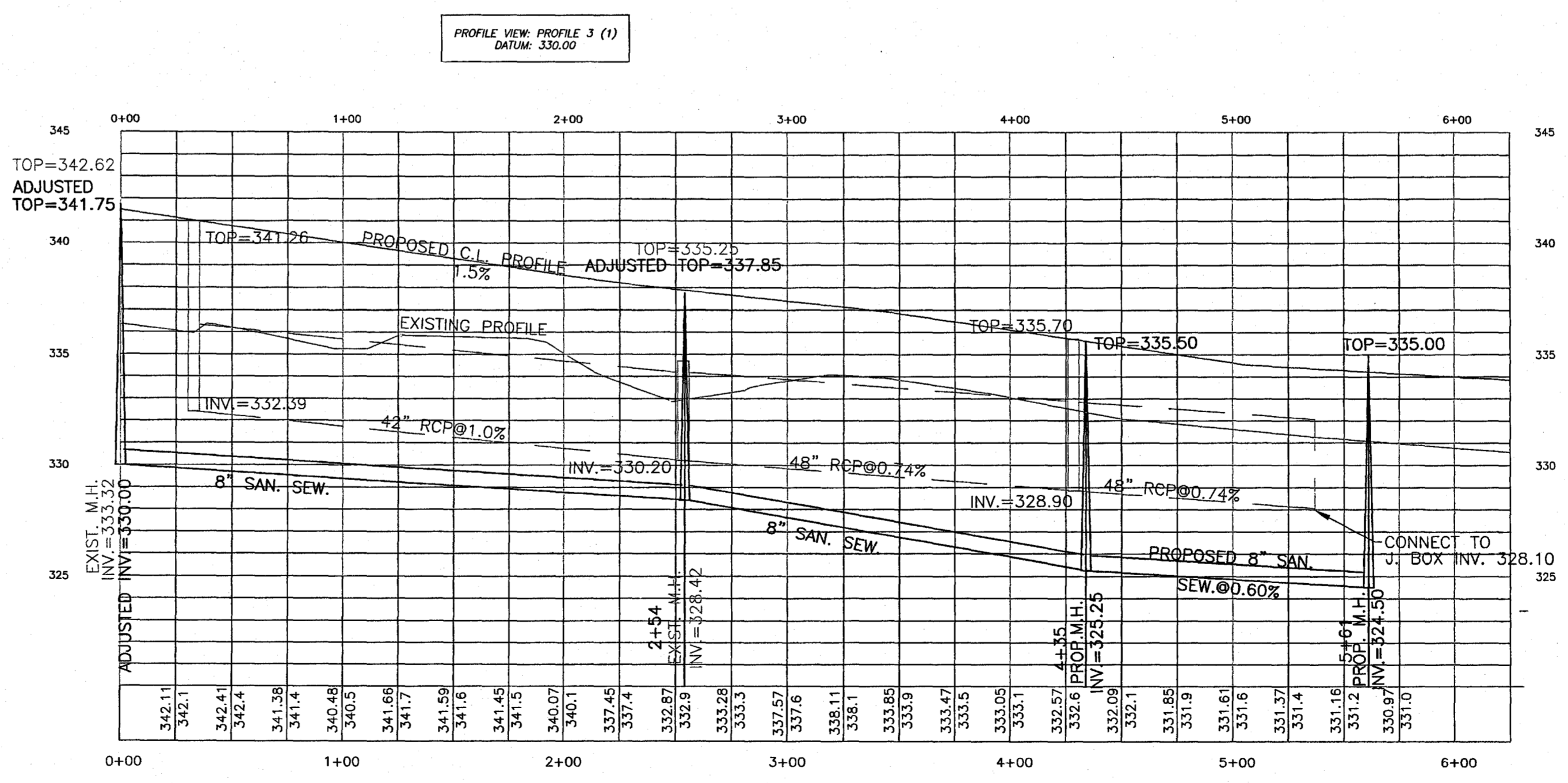
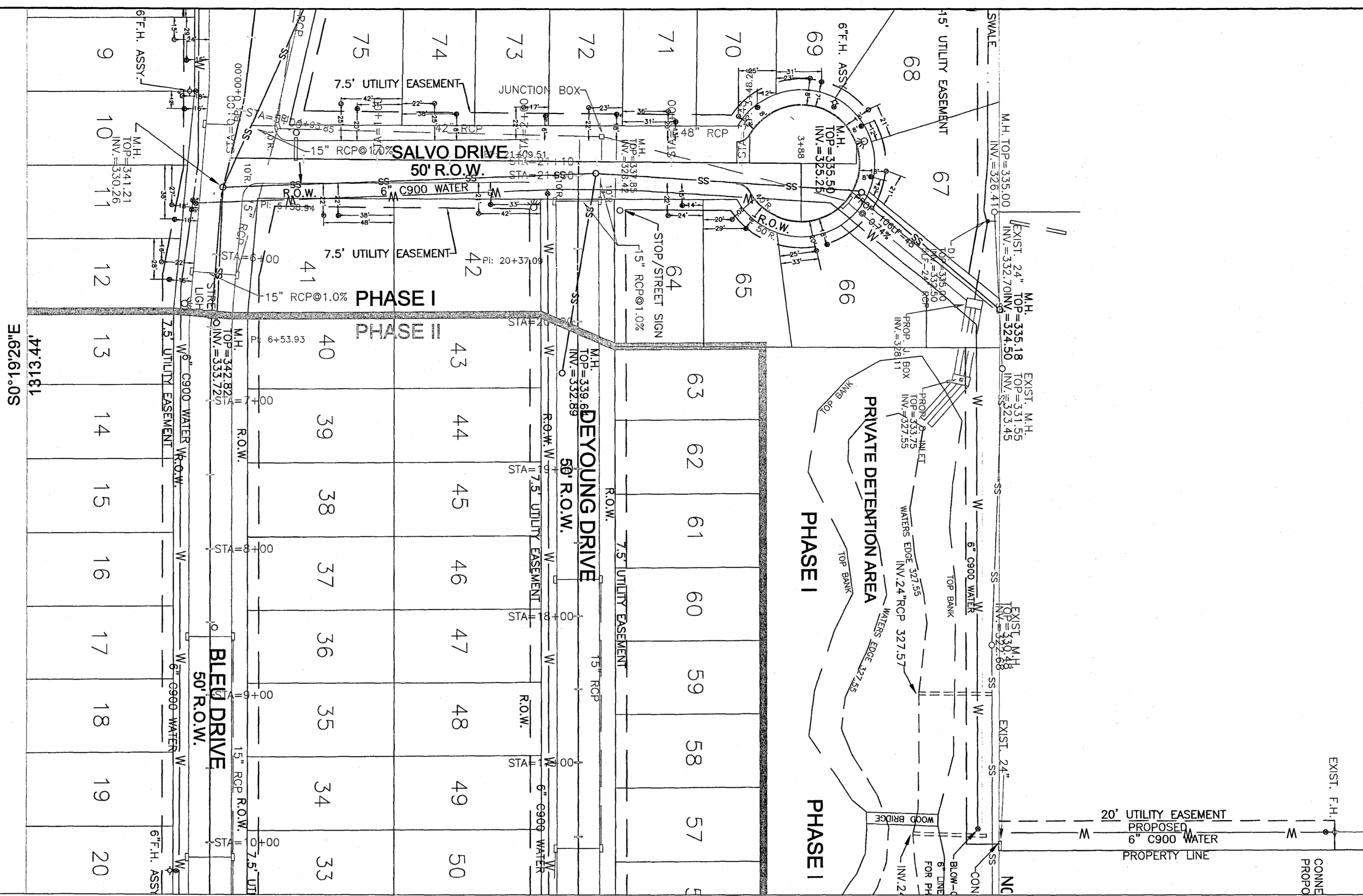
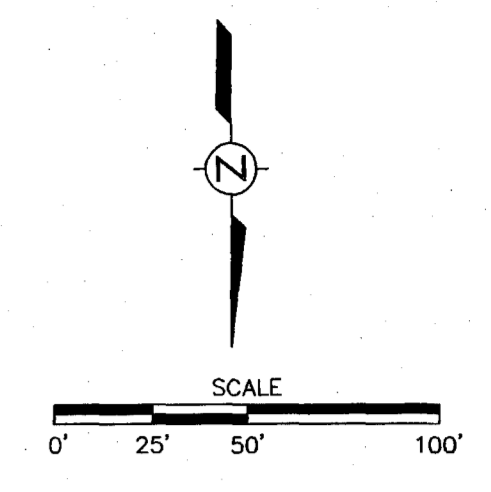


- NOTES**
- ALL LOTS SHALL HAVE 2010 ADA COMPLIANT SIDEWALKS CONSTRUCTED ALONG FRONT PROPERTY LINE (BOTH SIDES FOR CORNER LOTS).
 - THIS PROPERTY IS SITUATED IN ZONE X ACCORDING TO FEMA MAP NOS. 28089C0567 AND 28089C0586 DATED 3/17/10.
 - ALL UNDEVELOPED AREAS INSIDE SUBDIVISION BOUNDARY WILL BE CONSIDERED HOME OWNERS ASSOCIATION COMMON AREAS.
 - ADA CURB CUT RAMPS TO BE INSTALLED BY CURB & GUTTER CONTRACTOR DURING STREET CONSTRUCTION.
 - ADA CURB CUT RAMPS TO BE INSTALLED AT LOTS 11, 41, 42, 65, 72 73 AND 75 FOR ACCESS TO SIDEWALKS. CURB CUTS AT LOTS 41 AND 75 SHALL BE RADIUS STYLE RAMP CUTS.
 - NO SHARED WATER TAPS SHALL BE ALLOWED FOR WATER SERVICE CONNECTIONS.

REV.	DESCRIPTION OF REVISION	BY	REVISION DATE
5	REVISIONS	MJA	5/6/13
4	REVISIONS	MJA	4/22/13
3	REVISIONS	MJA	4/15/13
2	REVISIONS	MJA	3/19/13
1	REVISIONS	MJA	1/18/13
0	ISSUED FOR REVIEW	MJA	12/5/12

REV.	DESCRIPTION OF REVISION	BY	REVISION DATE
6	REVISIONS	MJA	6/7/13
7	RECORD DRAWING	MJA	10/8/14

SCALE: SHOWN	Alford and Associates Consulting Engineers 7112 Suite B Siwell Road Byram, Mississippi 39272	PROJECT No.
DRAWN BY: MJA		CAD FILE NAME
REVIEWED: M. ALFORD		DRAWING
PROJECT MANAGER: M. ALFORD		3 of 7



- NOTES**
1. ALL LOTS SHALL HAVE 2010 ADA COMPLIANT SIDEWALKS CONSTRUCTED ALONG FRONT PROPERTY LINE (BOTH SIDES FOR CORNER LOTS).
 2. THIS PROPERTY IS SITUATED IN ZONE X ACCORDING TO FEMA MAP NOS. 28089C0567 AND 28089C0586 DATED 3/17/10.
 3. ALL UNDEVELOPED AREAS INSIDE SUBDIVISION BOUNDARY WILL BE CONSIDERED HOME OWNERS ASSOCIATION COMMON AREAS.
 4. ADA CURB CUT RAMPS TO BE INSTALLED BY CURB & GUTTER CONTRACTOR DURING STREET CONSTRUCTION.
 5. ADA CURB CUT RAMPS TO BE INSTALLED AT LOTS 11, 41, 42, 65, 72, 73 AND 753 FOR ACCESS TO SIDEWALKS. CURB CUTS AT LOTS 41 AND 75 SHALL BE RADIUS STYLE RAMP CUTS.
 6. NO SHARED WATER TAPS SHALL BE ALLOWED FOR WATER SERVICE CONNECTIONS.

REV.	DESCRIPTION OF REVISION	BY	REVISION DATE
7	RECORD DRAWING	MJA	10/8/14
6	REVISIONS	MJA	6/7/13
5	REVISIONS	MJA	5/6/13
4	REVISIONS	MJA	4/22/13
3	REVISIONS	MJA	4/15/13
2	REVISIONS	MJA	3/19/13
1	REVISIONS	MJA	1/18/13
0	ISSUED FOR REVIEW	MJA	12/5/12

SCALE: SHOWN
DRAWN BY: MJA
REVIEWED: M. ALFORD
PROJECT MANAGER: M. ALFORD
12/5/12

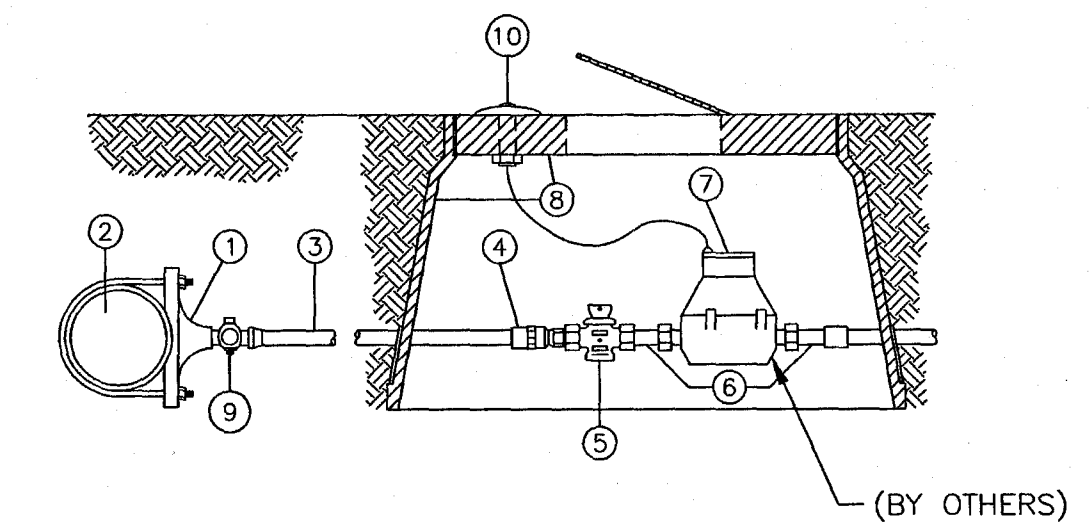
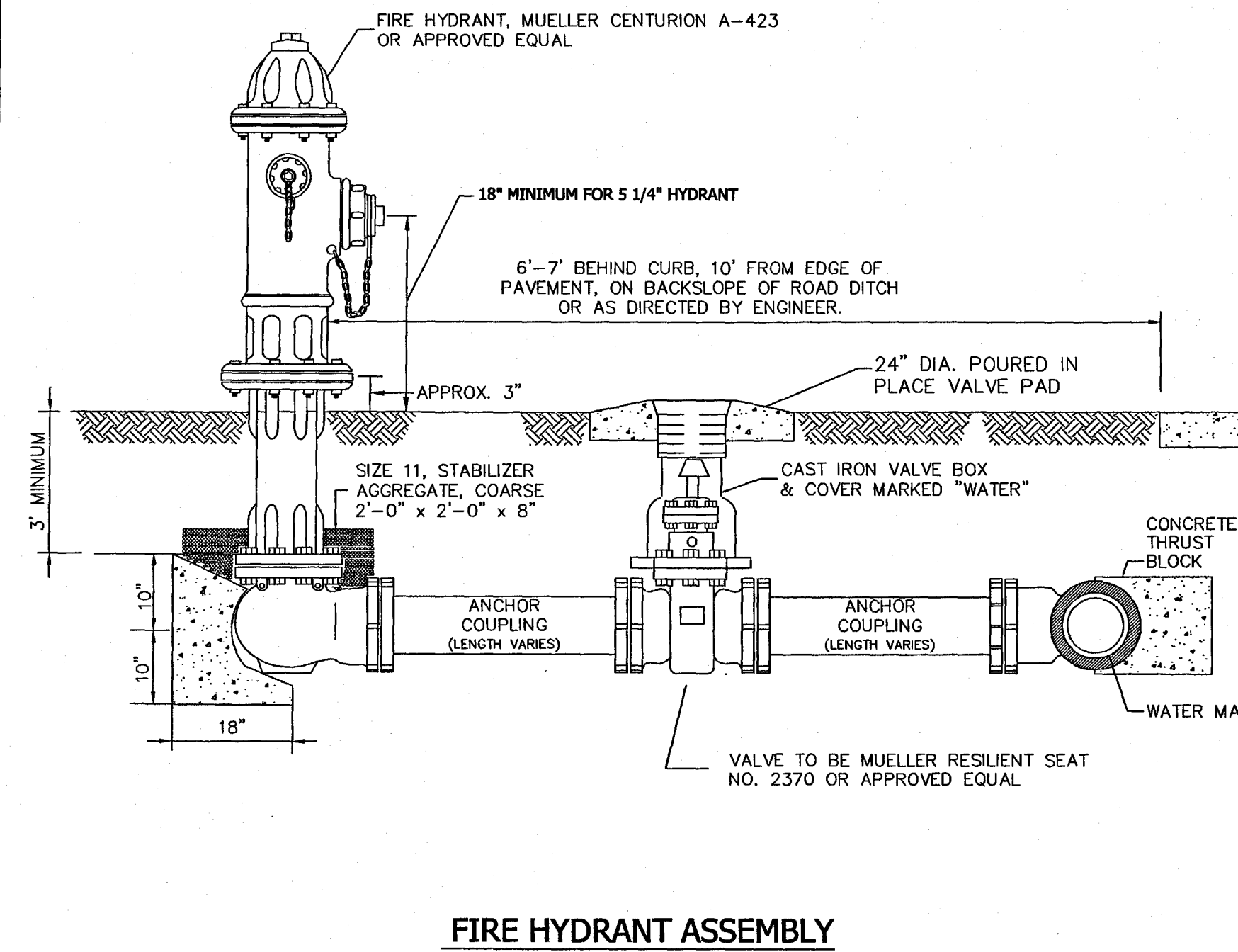
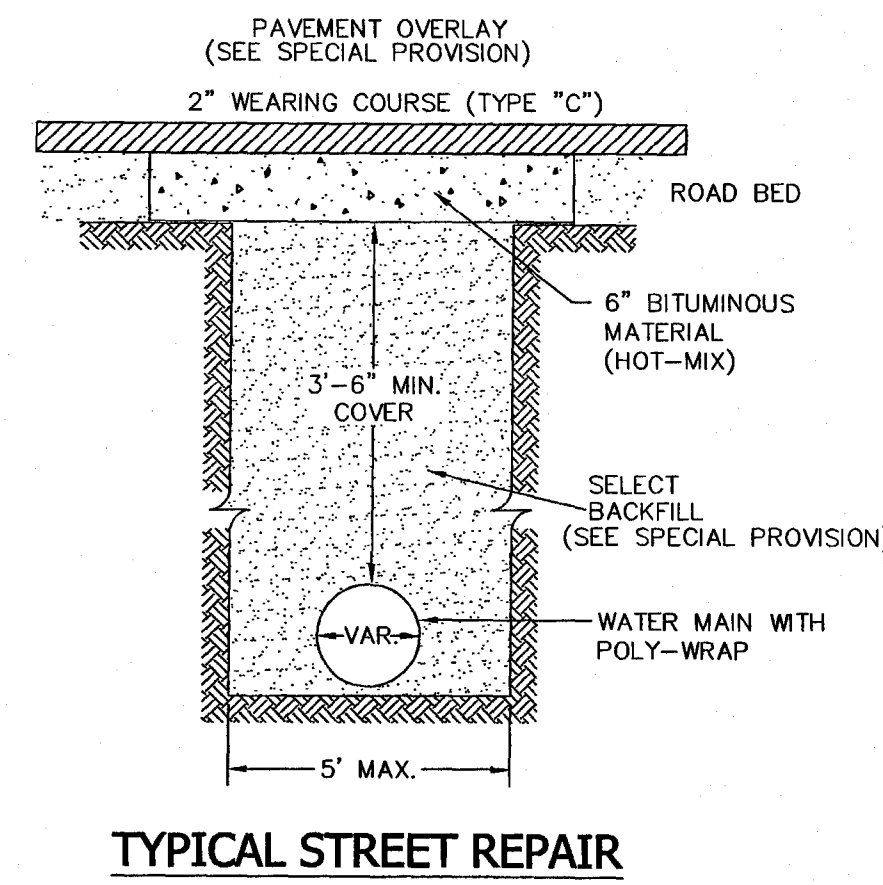
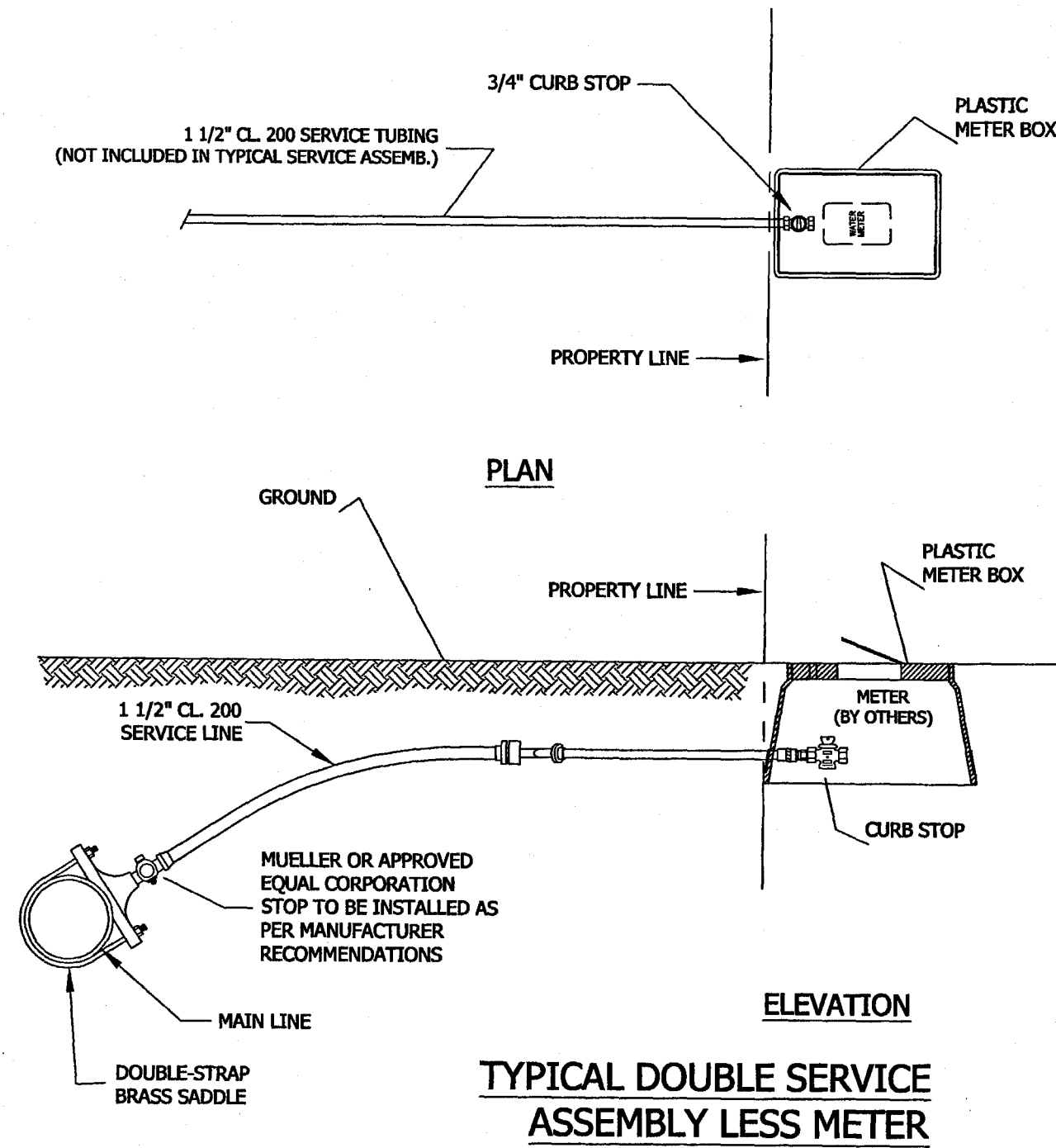
Alford and Associates
 Consulting Engineers
 712 Suite B Siwell Road
 Byram, Mississippi 39272

PLAN/PROFILE
 RECORD DRAWING
 MAISON BLEU SUBDIVISION
 RIDGELAND, MISSISSIPPI

PROJECT No.
 CAD FILE NAME
 DRAWING
4 of 7

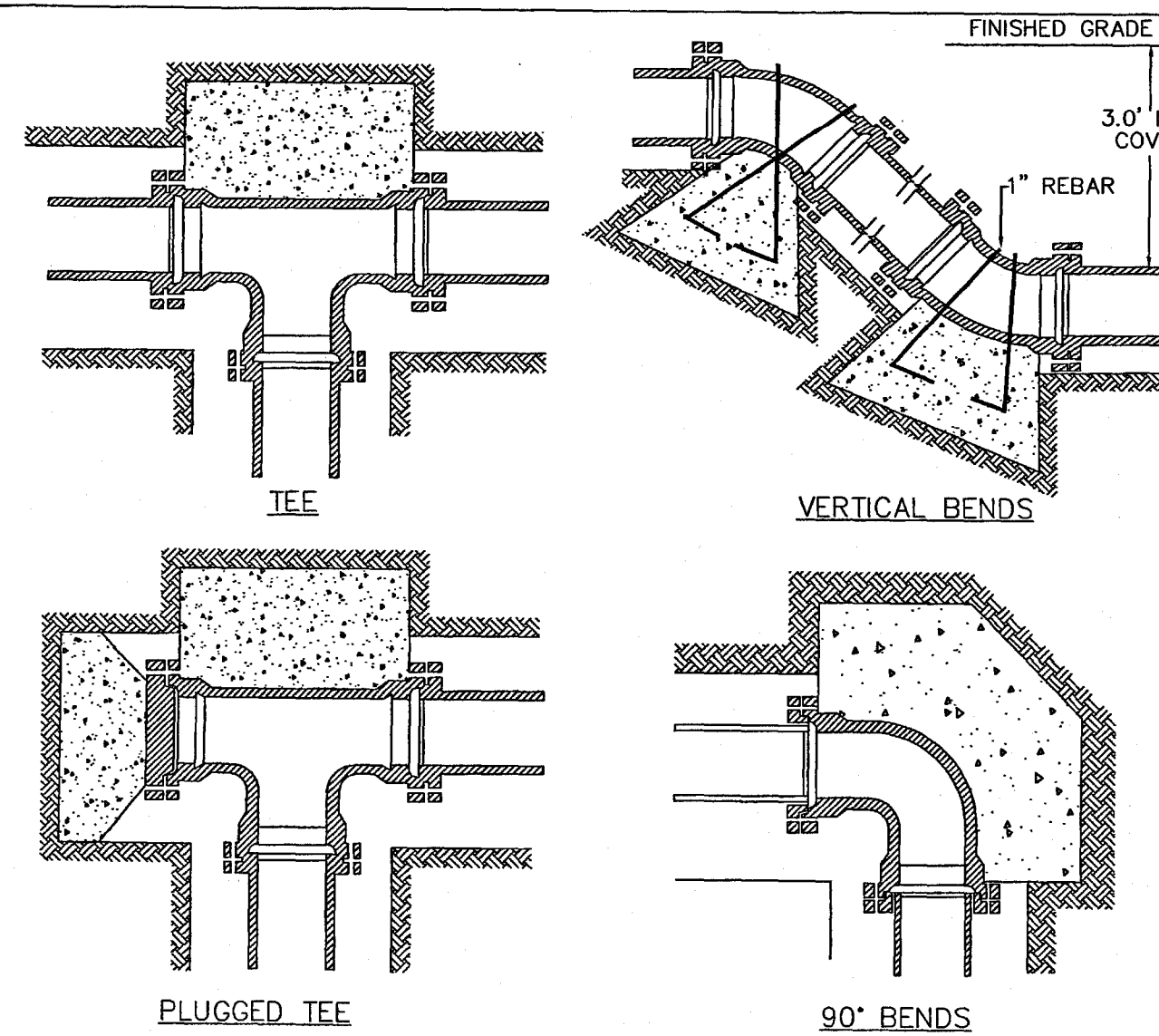
NOTES

1. NO SHARED WATER TAPS SHALL BE ALLOWED FOR WATER SERVICE CONNECTIONS.



ITEM NO.	NO. REQ'D.	SIZE AND DESCRIPTION	MATERIAL SPECIFICATIONS
1	1	SERVICE CLAMP	MUELLER-DOUBLE STRAP
2	1	P.V.C. MAIN	POLYVINYL-CHLORIDE TYPE II
3	1	3/4" OR 1" I.P. SIZE P.V.C. SERVICE LINE (AS REQ'D.) *	POLYETHYLENE CL-200
4	1	3/4" TRANSITION FITTING P.V.C.	MUELLER H-12211
5	1	METER VALVE	MUELLER H-10291
6	2	3/4" METER COUPLINGS	MUELLER H-10891 (BY OTHERS)
7	1	3/4" WATER METER	(BY OTHERS)
8	1	STANDARD BLACK PLASTIC METER BOX WITH READER LID.	NDS-D-1200-DTR (PREDRILLED LID FOR METER)
9	1	CORPORATION STOP *	MUELLER H-10012
10	1	TOUCH READ DEVICE	SENSUS (BY OTHERS)

TYPICAL SERVICE ASSEMBLY
CONNECTING TO PVC WATER MAIN
(TOUCH READ METER)



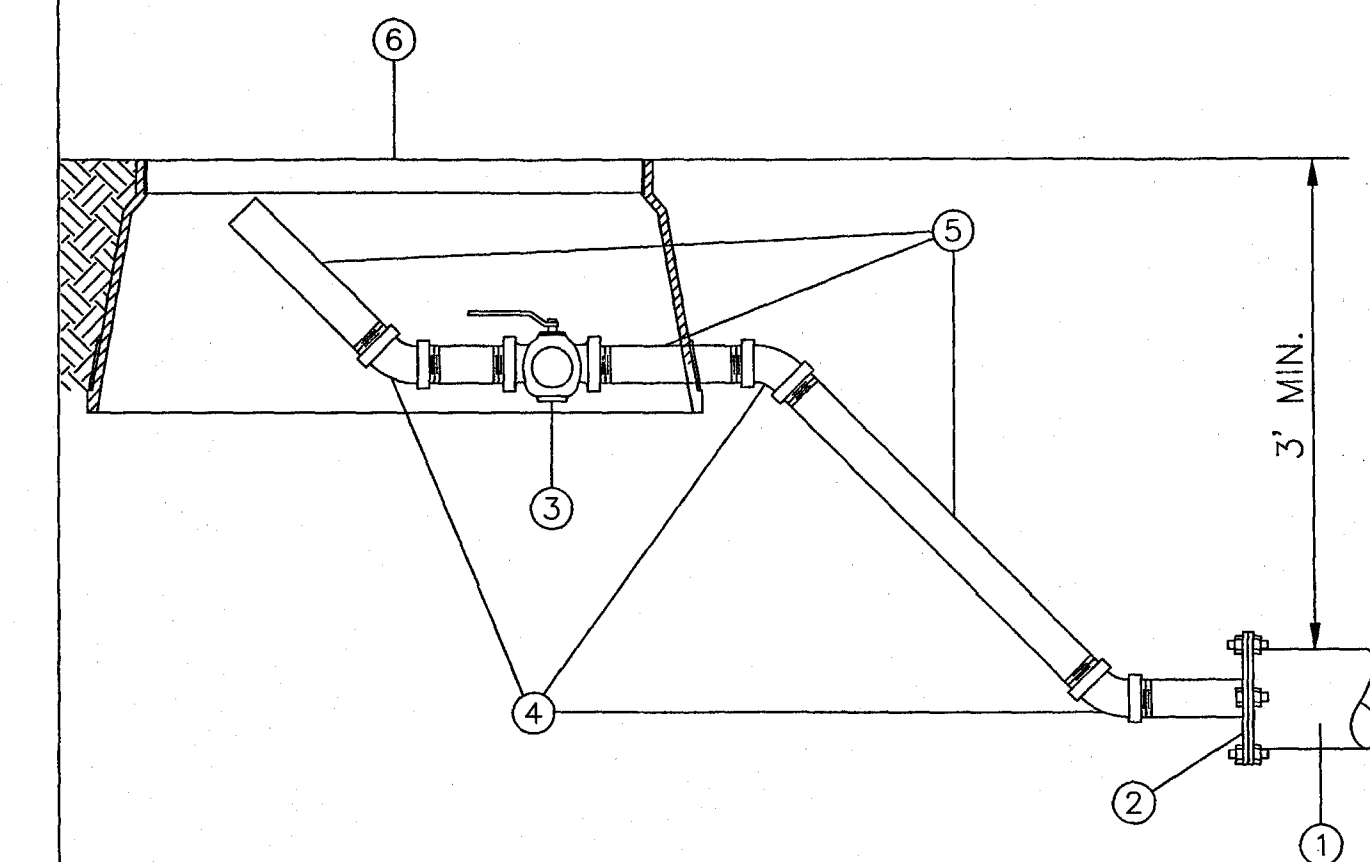
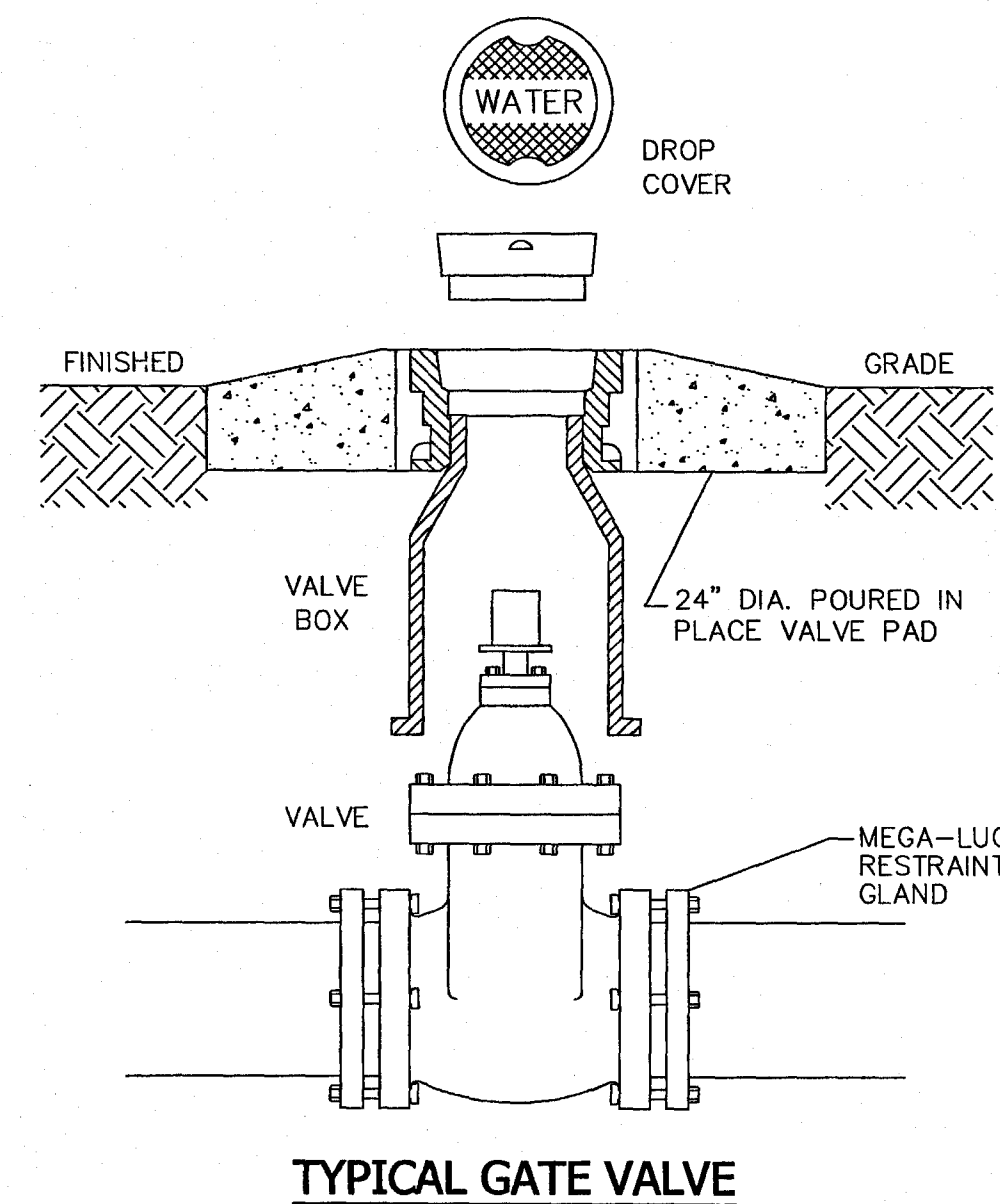
BEARING AREA IN SQ. FT.

NOMINAL PIPE DIAMETER (IN.)	90° BEND	45° BEND	90° BEND	11 1/4° BEND
4	2.0	2.0	2.0	2.0
6	2.0	2.0	2.0	2.0
8	3.0	3.0	2.0	2.0
12	5.0	8.0	4.0	3.0
18	8.0	12.0	6.0	4.0

Volume of blocks including soil load C.U.F.T. (COL 10'S)

4	6	8	12	18
8.0 (22)	4.0 (15)	4.0 (15)	4.0 (15)	4.0 (15)
14.0 (50)	6.0 (22)	6.0 (22)	6.0 (22)	6.0 (22)
27.0 (10)	8.0 (33)	8.0 (33)	8.0 (33)	8.0 (33)
46.0 (23)	20.0 (80)	9.0 (33)	9.0 (33)	9.0 (33)
80.0 (33)	22.0 (19)	18.0 (67)	18.0 (67)	18.0 (67)

WATER DISTRIBUTION THRUST BLOCK DETAILS



ITEM NO.	NO. REQ'D.	SIZE AND DESCRIPTION	MATERIAL SPECIFICATIONS
1	1	P.V.C. MAIN	
2	1	DUCTILE IRON M.J. TAPPED CAP w/ MEGA-LUG	
3	1	2" LEVER BALL VALVE - SCREWED ENDS	
4	3	2" GALVANIZED BENDS - THREADED	
5	1	2" GALVANIZED PIPE - THREADED	
6	1	OVERSIZED BLACK PLASTIC METER BOX.	

TYPICAL 2" BLOW-OFF ASSEMBLY

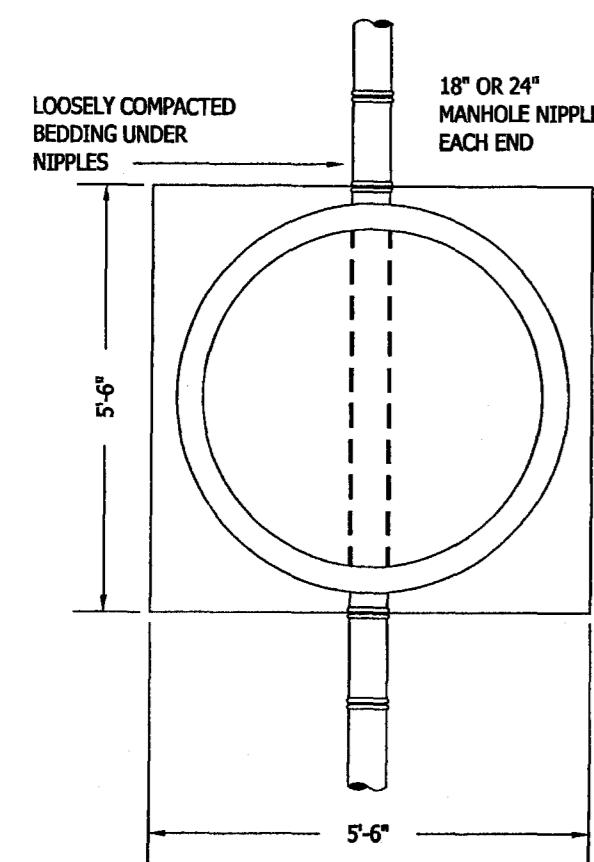
REV.	DESCRIPTION OF REVISION	BY	REVISION DATE
1	REVISIONS	MJA	2/11/13
0	ISSUED FOR REVIEW	MJA	12/4/12

SHOWN	MJA
REVIEWED:	M. ALFORD
PROJECT MANAGER:	M. ALFORD
12/4/12	

Alford and Associates
Consulting Engineers
7112 Suite B Siwell Road
Byram, Mississippi 39272

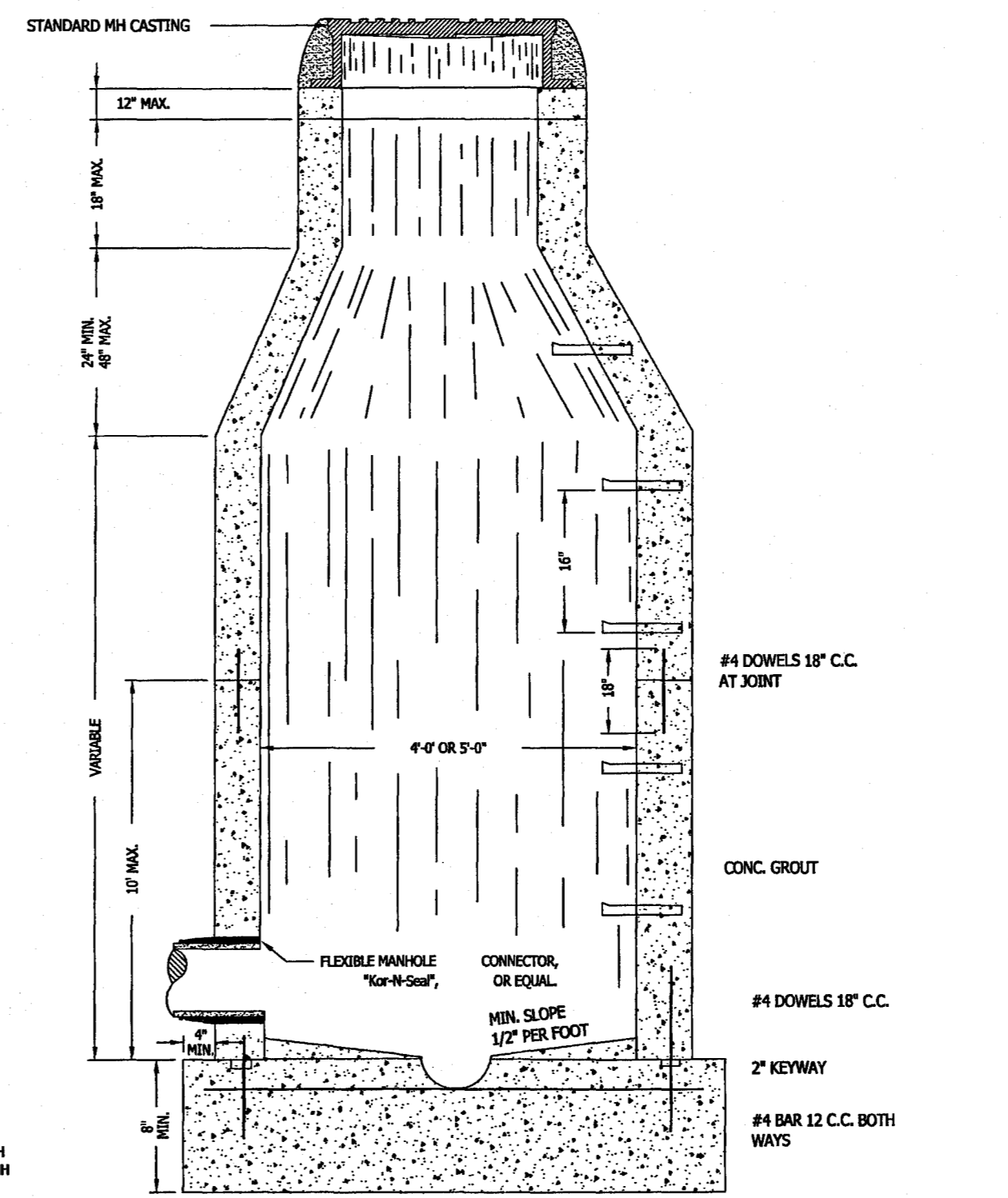
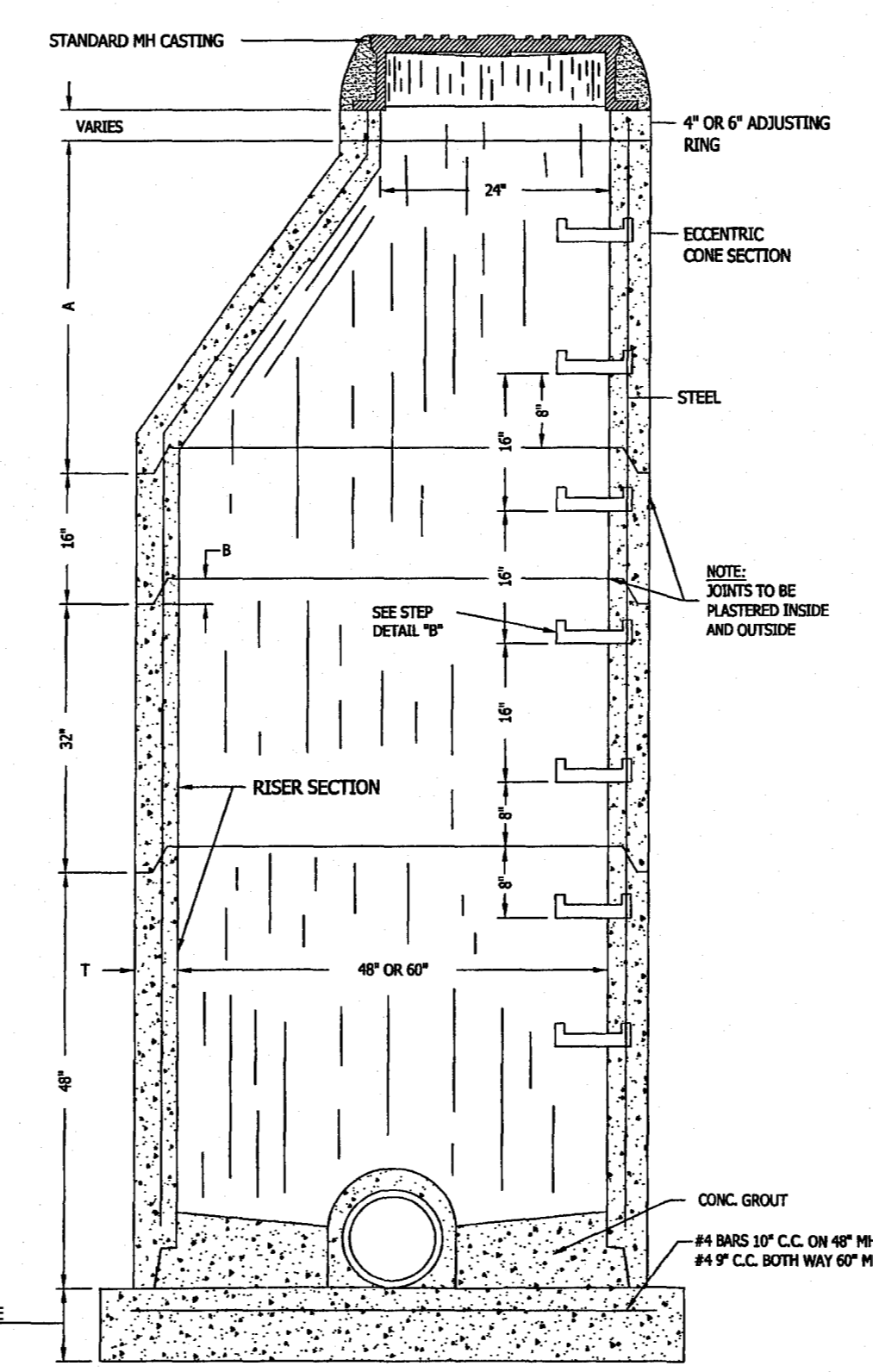
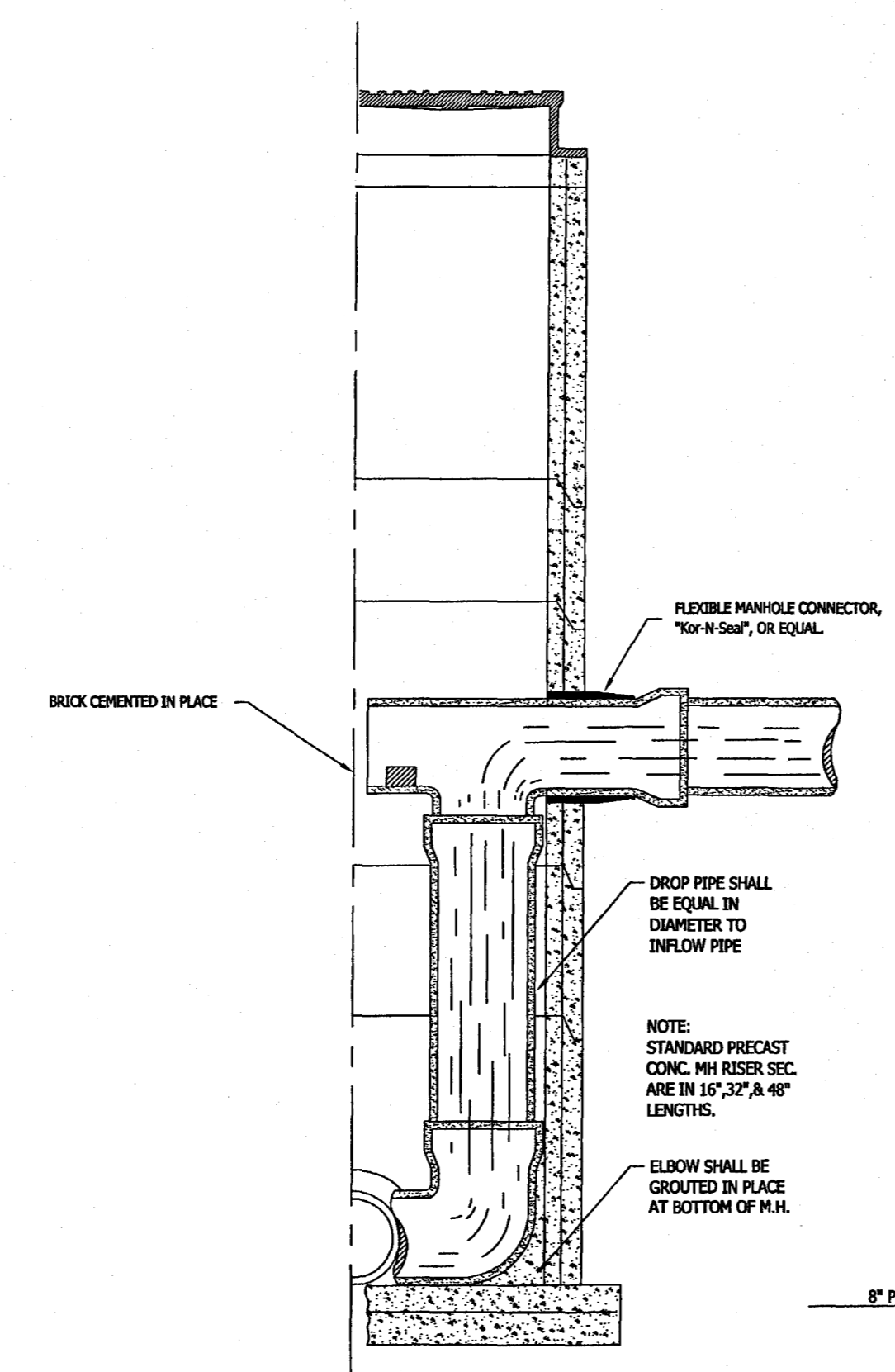
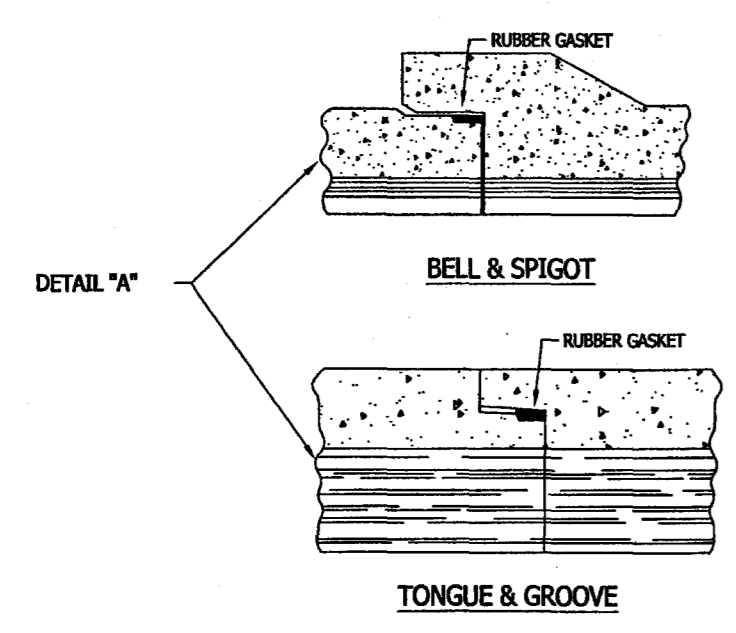
WATER DETAILS
RECORD DRAWING
MAISON BLEU SUBDIVISION
RIDGELAND, MISSISSIPPI

PROJECT No.
CAD FILE NAME
DRAWING
5 of 7

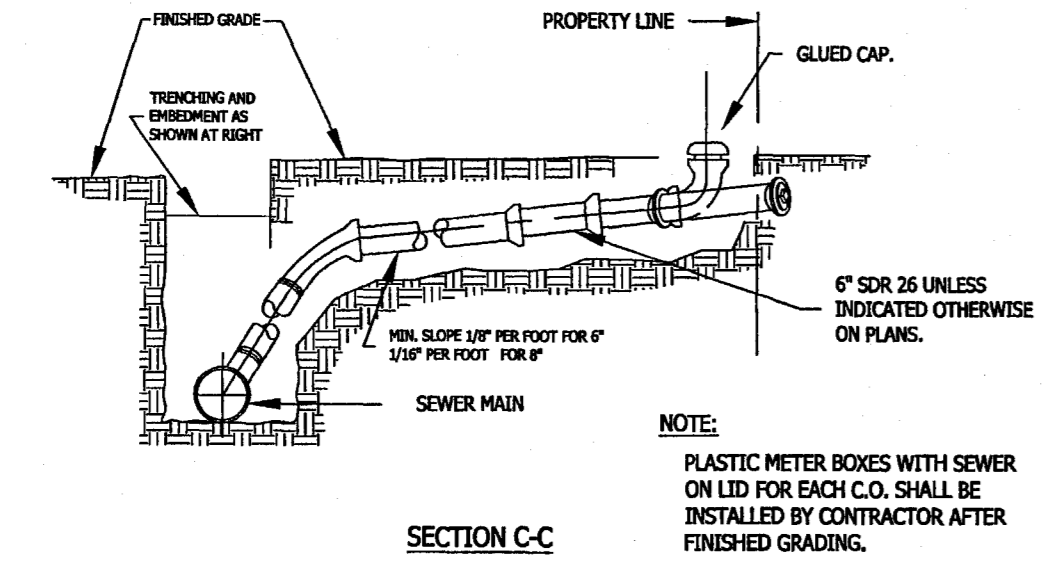
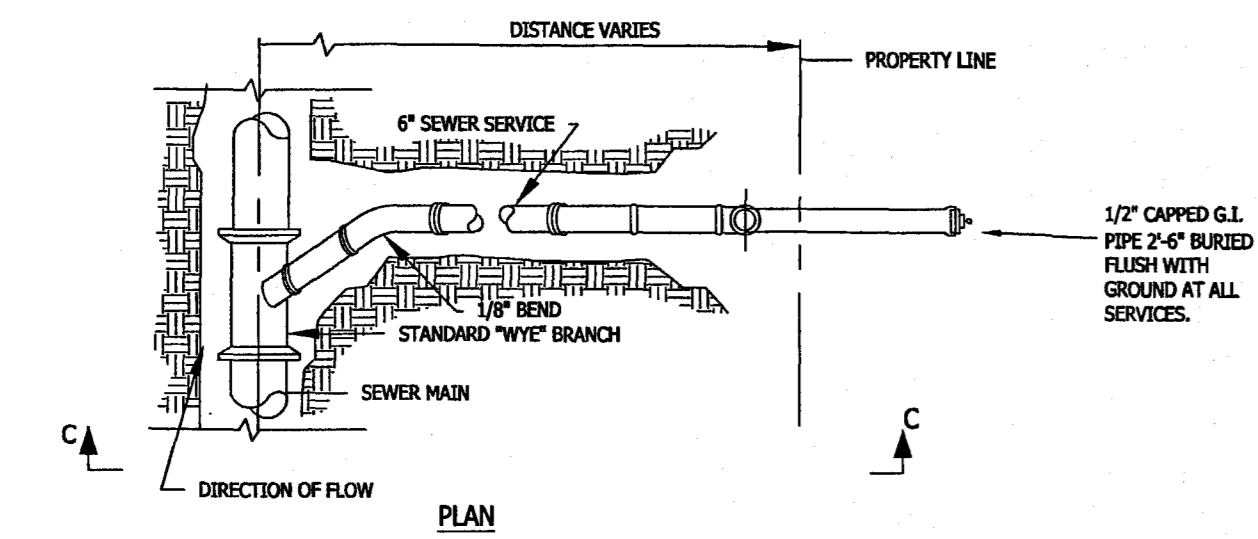


NOTE:
DO NOT POUR ADDITIONAL CONCRETE ON OR BEYOND MH NIPPLE
USE A MINIMUM OF 1 NIPPLE AT EACH ENTRANCE TO MH
PIPE OPENING IN PRE-CAST CONCRETE UNITS SHALL BE EQUAL TO O.D. OF PIPE PLUS 6" WADGNUM
DO NOT USE BRICK, BLOCK OR TIMBER TO SUPPORT PIPE OR NIPPLES OUT-SIDE OF MANHOLE

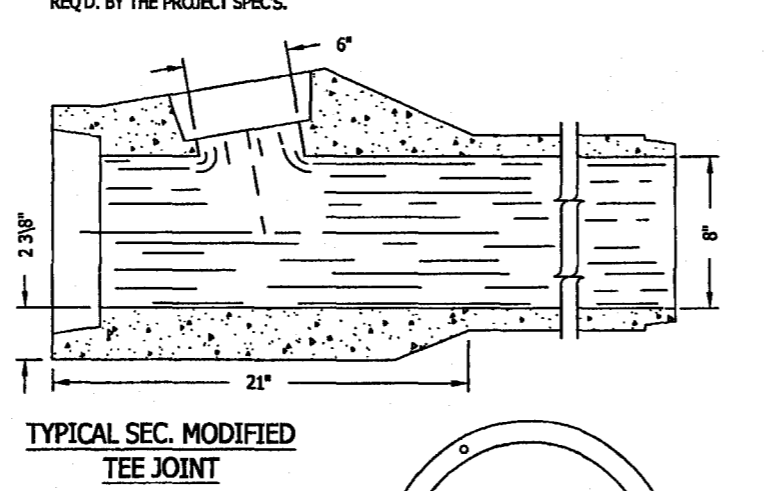
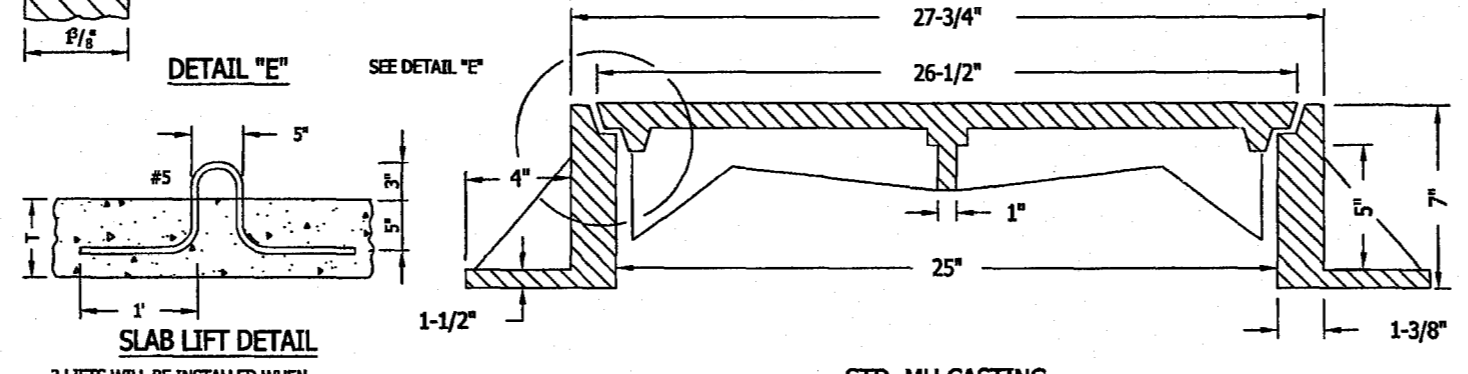
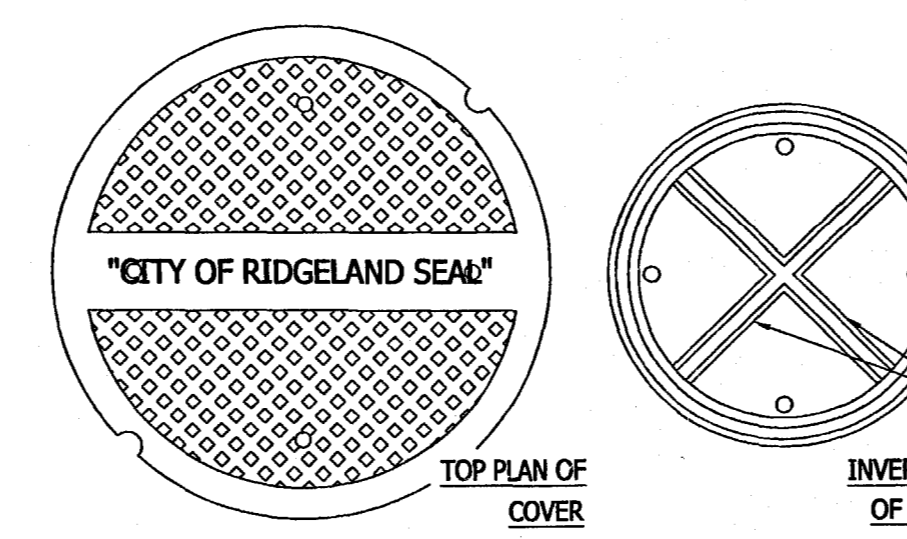
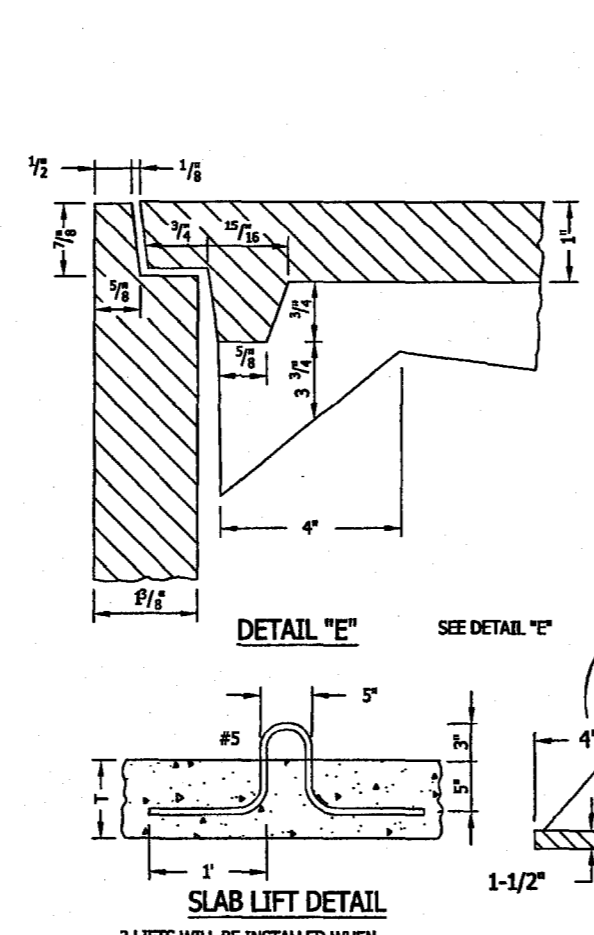
TYPICAL PIPE CONNECTION TO MANHOLE



- NOTES**
- SEWER CLEAN-OUT REQUIRED ON CITY SIDE OF PROPERTY AT EACH SERVICE LATERAL.
 - NO SHARED SEWER TAPS SHALL BE ALLOWED FOR SEWER SERVICE CONNECTIONS.



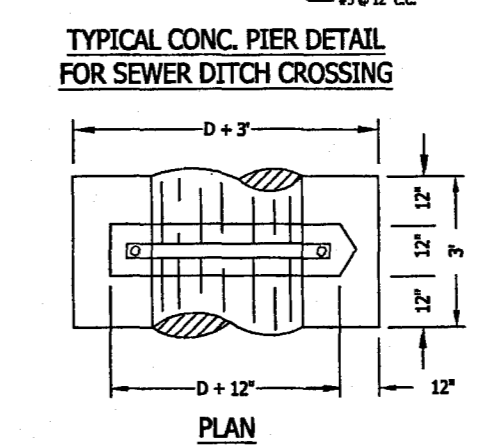
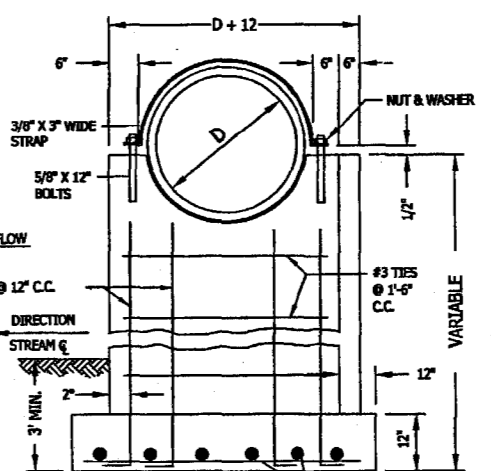
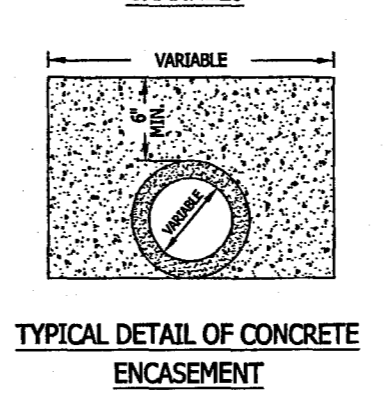
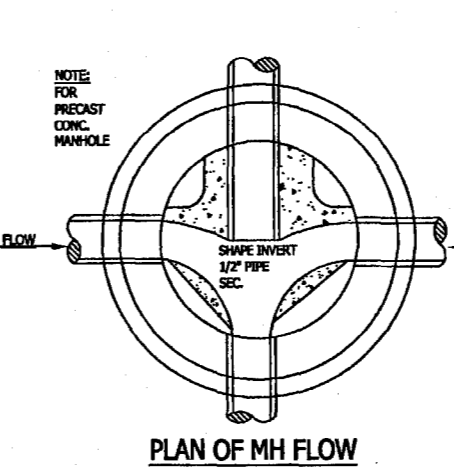
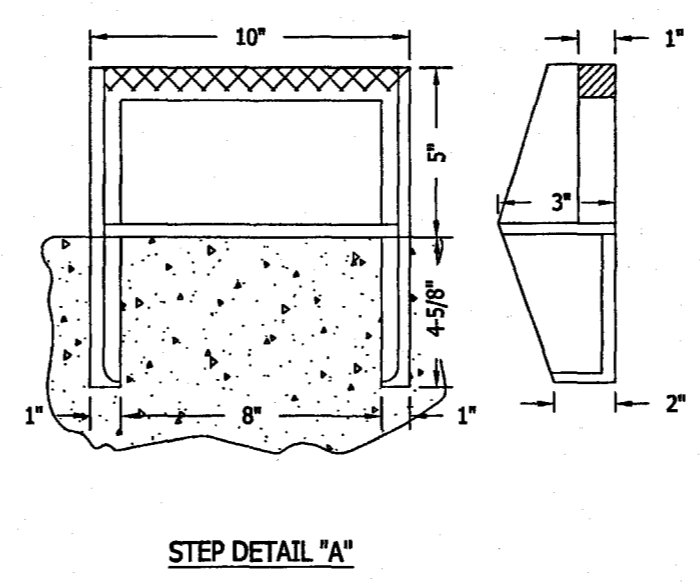
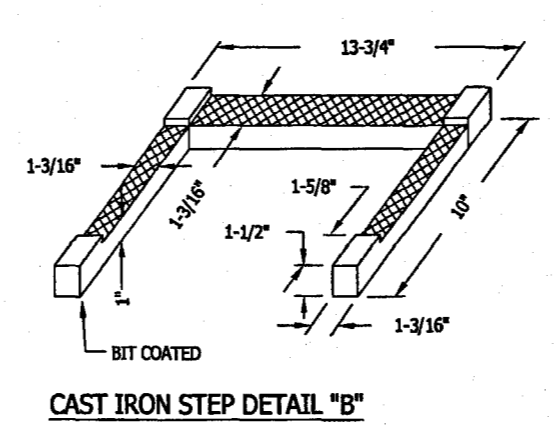
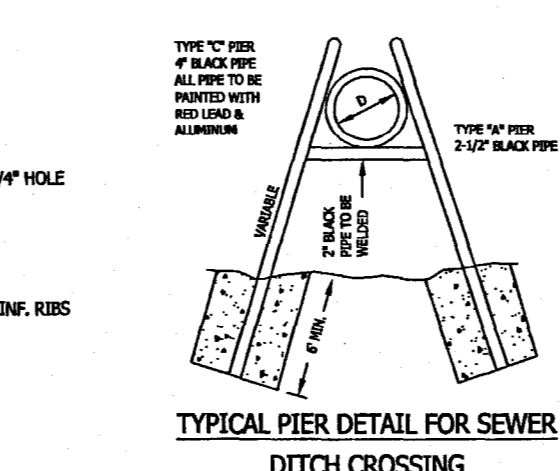
SEWER BRANCH CONNECTION



DIMENSION AND WEIGHT TABLE

PIPE DIA.	W	D	T	EST. WT.
48"	5"	58"	6"	1,145 LBS
54"	5 1/2"	65"	8"	1,990 LBS
60"	6"	72"	8"	2,515 *
66"	6 1/2"	79"	8"	3,090 *
72"	7"	86"	8"	3,270 *
84"	8"	100"	8"	5,140 *
96"	9"	114"	8"	6,775 *
108"	9"	126"	8"	8,345 *

FLAT SLAB MANHOLE TOP



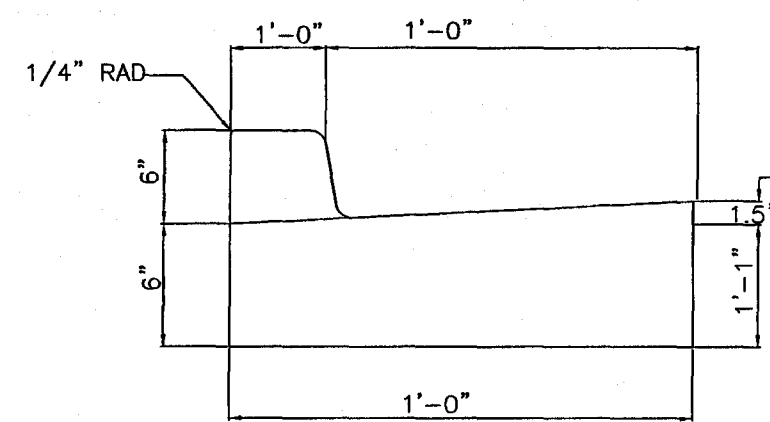
GENERAL NOTES
WHERE SOIL AT THE ELEVATION OF THE BASE OF A MANHOLE IS UNSUITABLE THE THICKNESS AND/OR BASE WILL BE INCREASED AS DIRECTED BY THE ENGINEER.
PIPE JOINTS FORMED BY JUTE AND HOT POURED BITUMINOUS COMPOUND ARE NOT PERMISSIBLE.
JOINTS FORMED BY RUBBER GASKET PLUS REFINED PLASTIC CEMENT COMPOUND WILL BE REQ'D.

REV.	DESCRIPTION OF REVISION	BY	REVISION DATE
1	REVISIONS	MJA	2/11/13
0	ISSUED FOR REVIEW	MJA	12/4/12

SHOWN	MJA
REVIEWED:	M. ALFORD
PROJECT MANAGER:	M. ALFORD
	12/4/12

Alford and Associates
Consulting Engineers
7112 Suite B Siwell Road
Byram, Mississippi 39272

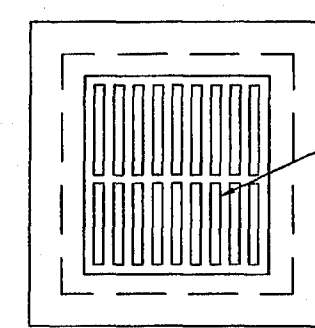
SEWER DETAILS RECORD DRAWING	PROJECT No.
MAISON BLEU SUBDIVISION RIDGELAND, MISSISSIPPI	CAD FILE NAME
	DRAWING
	6 of 7



NOTE:
 DUMMY JOINTS WILL BE MADE AT 10' INTERVALS.
 EXPANSION JOINTS WILL BE MADE AT 40' INTERVALS
 AND PRECUT JOINT MATERIAL TEMPLATES WILL
 BE USED IN ALL EXPANSION JOINTS.

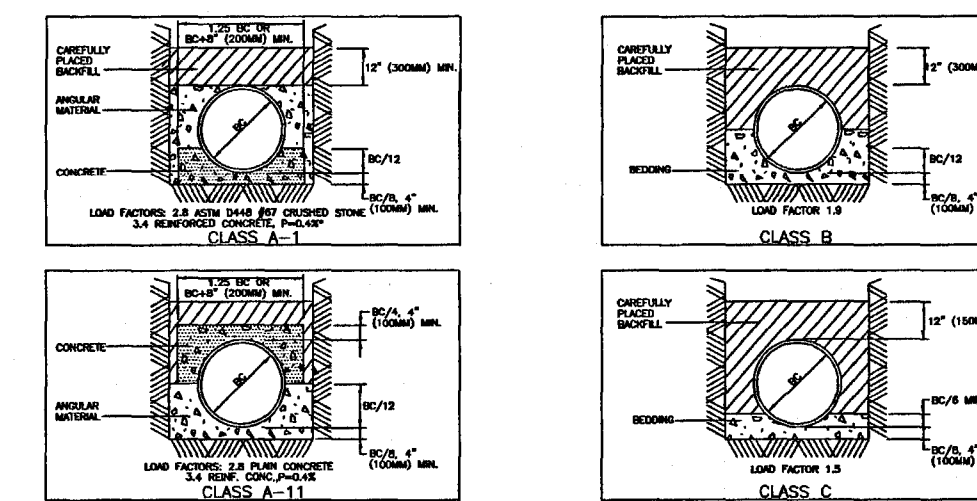
CURB AND GUTTER

NOT TO SCALE



GUTTER INLET-VULCAN V-4530-1
 DRIVE OVER GUTTER INLET OR EQUAL

PLAN



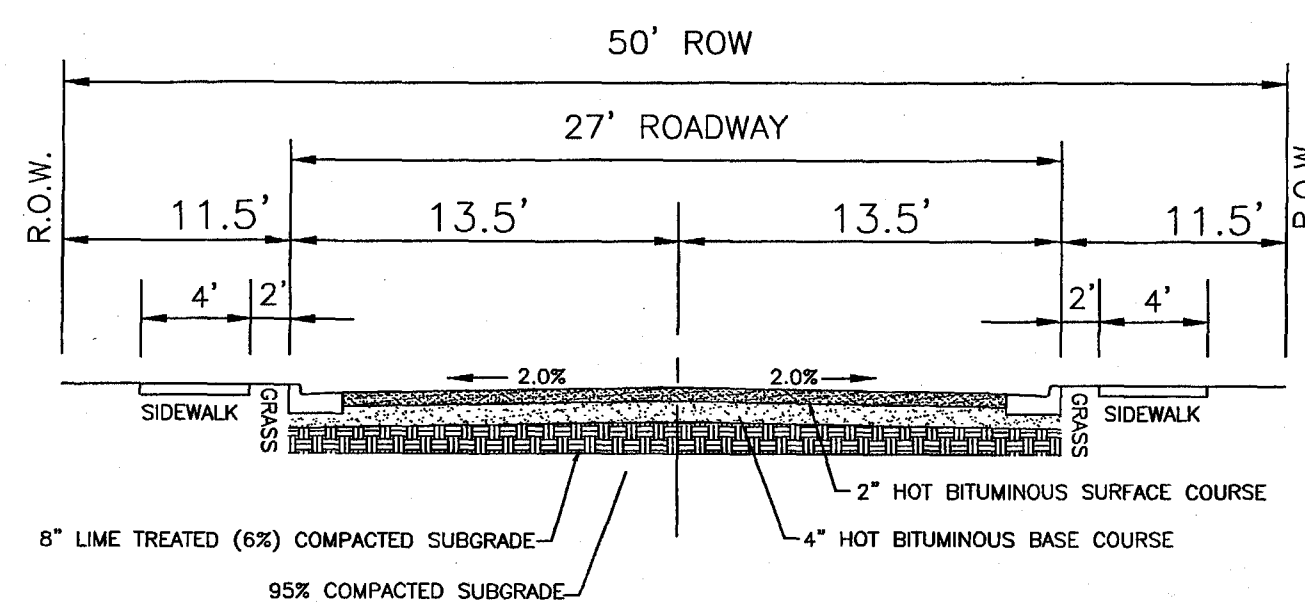
BEDDING DETAILS

SCALE: NONE

PIPE MATERIAL	CLASS BEDDING
REINFORCED CONCRETE	C
VITRIFIED CLAY	C
DUCTILE IRON	C
STEEL	C
PVC	B

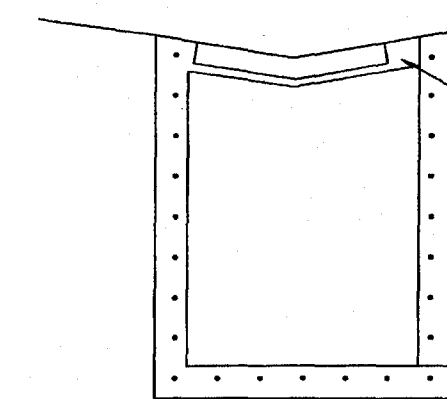
*UNLESS OTHERWISE SPECIFIED

PIPE BEDDING SCHEDULE*



**TYPICAL CUL-DE-SAC STREET
 CROSS-SECTION**

N.T.S.



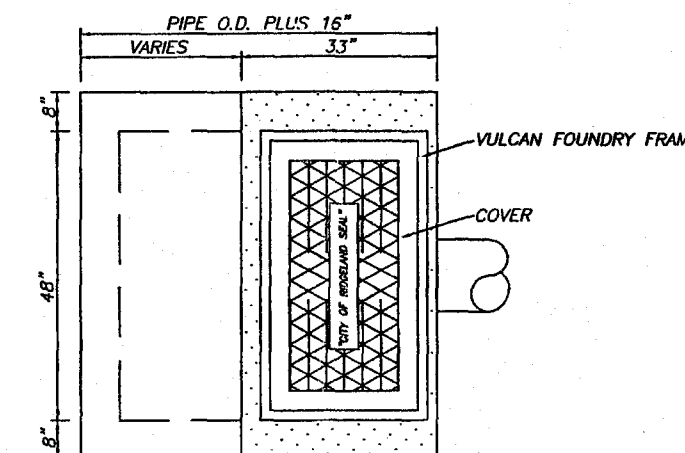
8" MINIMUM WALL THICKNESS
 #5 REBAR, E.W. @ 12" CTRS.

SECTION THRU JUNCTION BOX
 PRECAST OR POURED IN PLACE

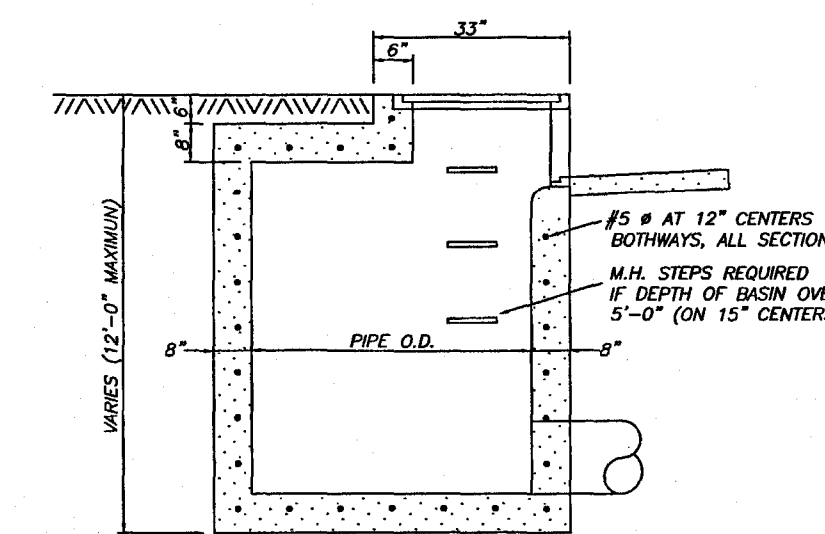
ELEVATION

GRATE INLET

SCALE: NONE



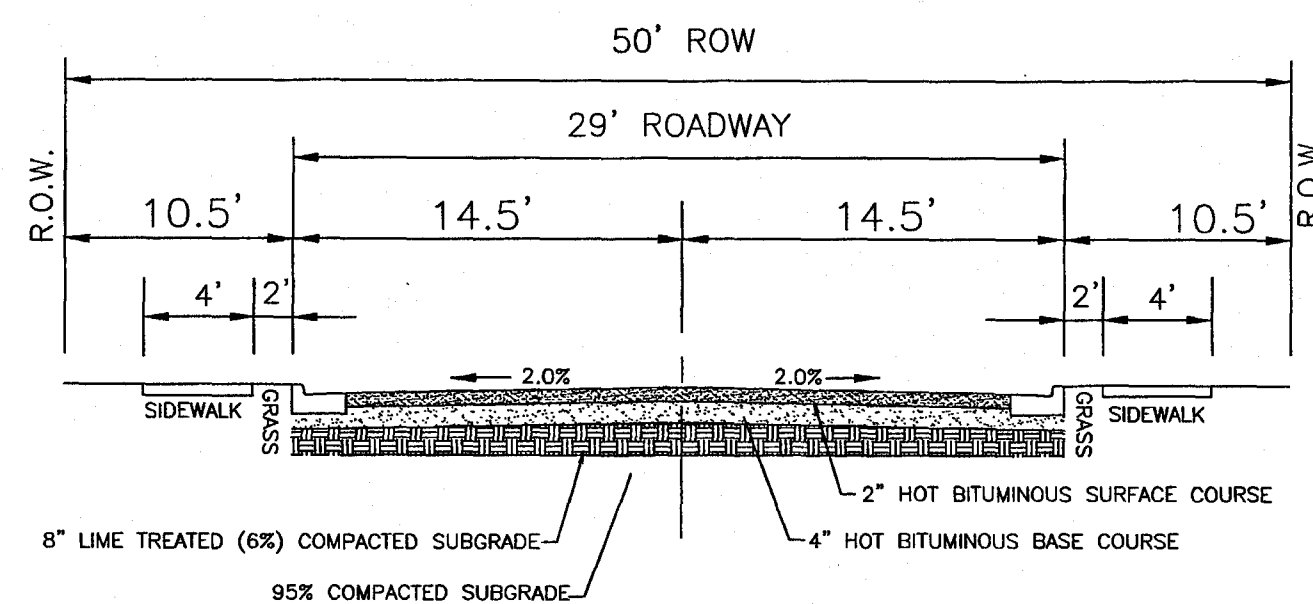
PLAN



SECTION THRU CATCHBASIN
 PRECAST OR POURED IN PLACE

CURB INLET DETAIL

NOT TO SCALE

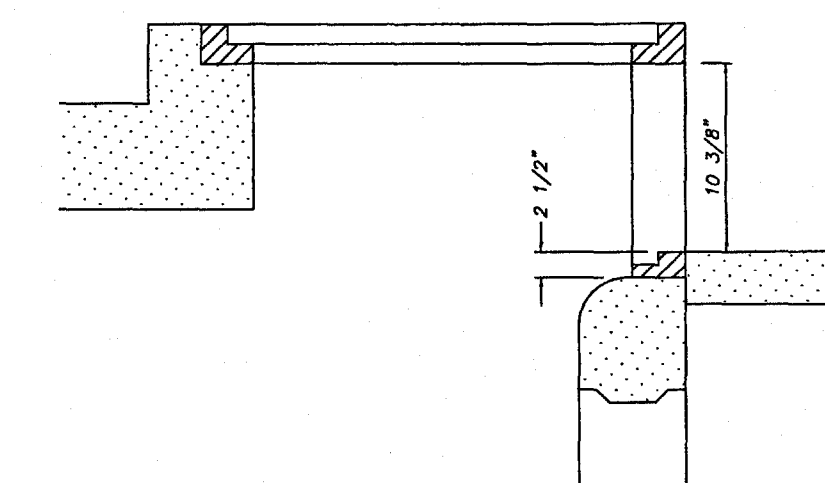


**TYPICAL STREET
 CROSS-SECTION**

N.T.S.

NOTES

1. STORM DRAIN PIPE SHALL MEET ASTM C-14 FOR SIZES 21" DIA. AND SMALLER, AND ASTM C-76 FOR SIZES 24" AND LARGER.



INLET CONFIGURATION

REV.	DESCRIPTION OF REVISION	BY	REVISION DATE
2	REVISIONS	MJA	6/7/13
1	REVISIONS	MJA	3/19/13
0	ISSUED FOR REVIEW	MJA	12/4/12

SHOWN	
MJA	
REVIEWED: M. ALFORD	
PROJECT MANAGER: M. ALFORD	
12/4/12	

Alford and Associates
 Consulting Engineers
 7112 Suite B Siwell Road
 Byram, Mississippi 39272

MISCELLANEOUS DETAILS
 RECORD DRAWING
 MAISON BLEU SUBDIVISION
 RIDGELAND, MISSISSIPPI

PROJECT No.
 CAD FILE NAME

DRAWING
 7 of 7