

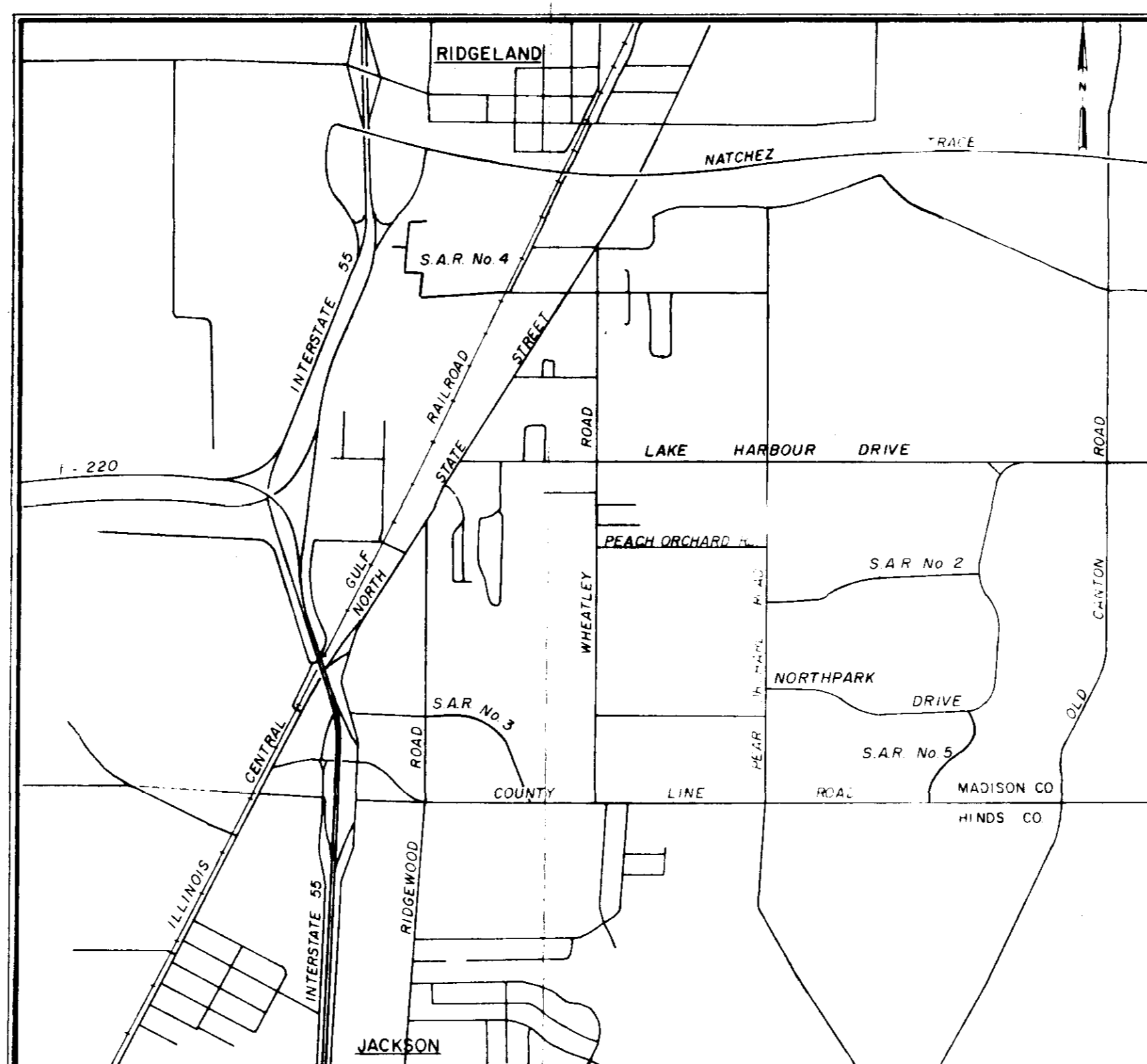
# CITY OF RIDGELAND, MISSISSIPPI

## PROPOSED 8" WATER MAIN

Mayor  
Hite Wolcott

Mayor Pro Tem  
Hilda Boyd

City Attorney  
Milton Case



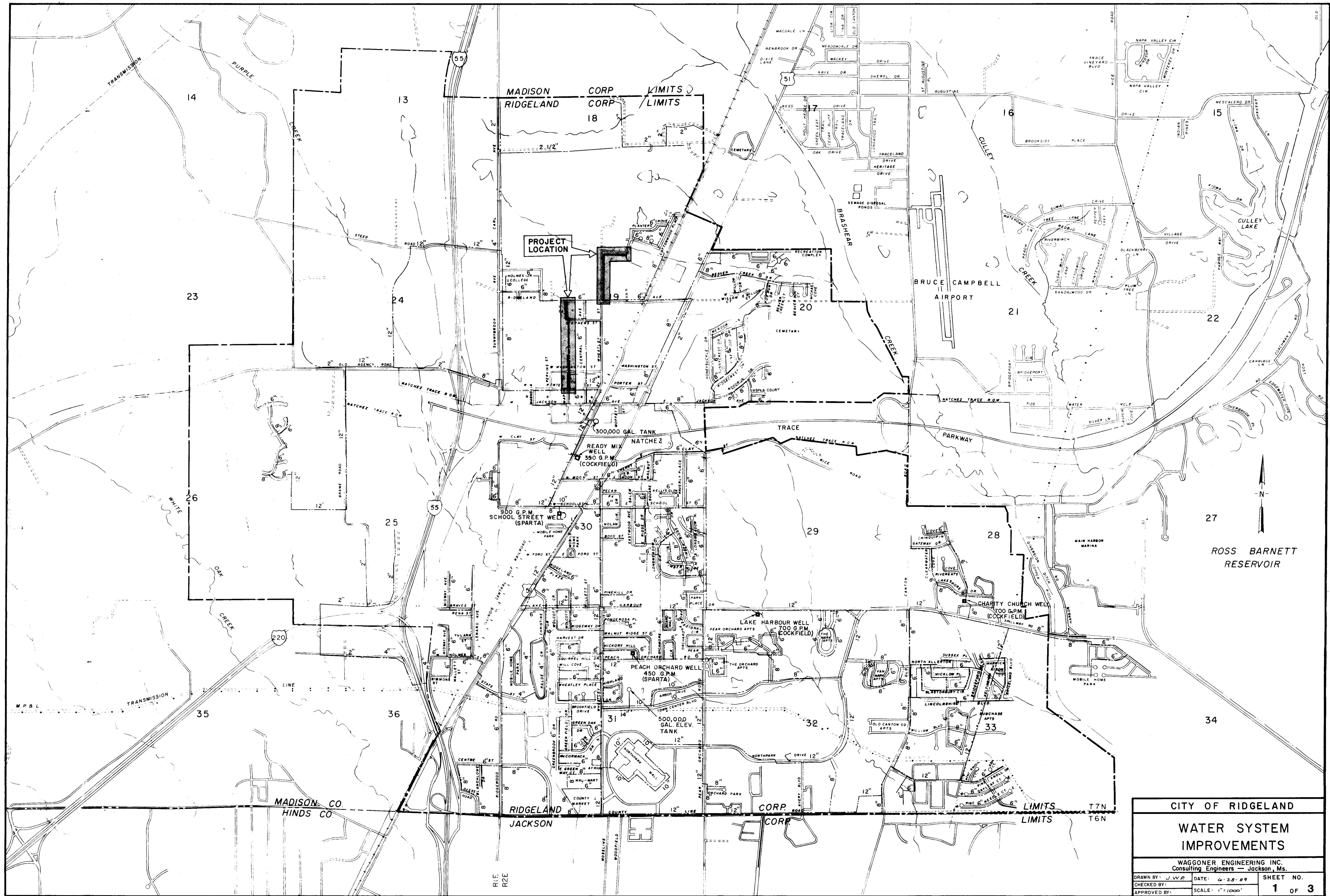
Aldermen  
Al Bible  
Hilda Boyd  
Harvey Carr, Jr.  
Gene McGee  
Gilbert Sollek

Public Works Director  
Horace M. Ross

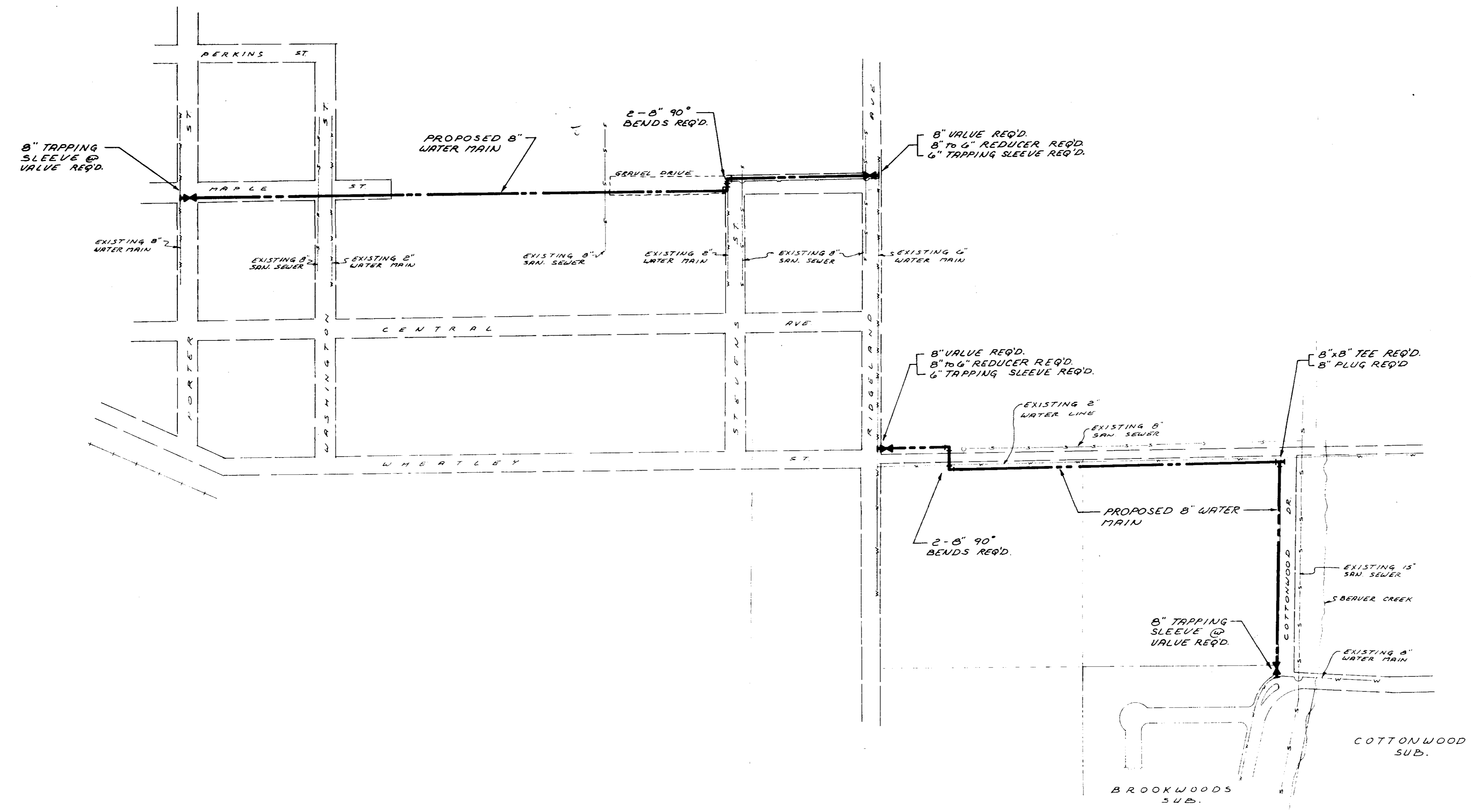
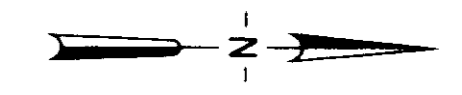
JUNE , 1989

WAGGONER ENGINEERING INC.  
Consulting Engineers  
Jackson / Brandon, Ms.

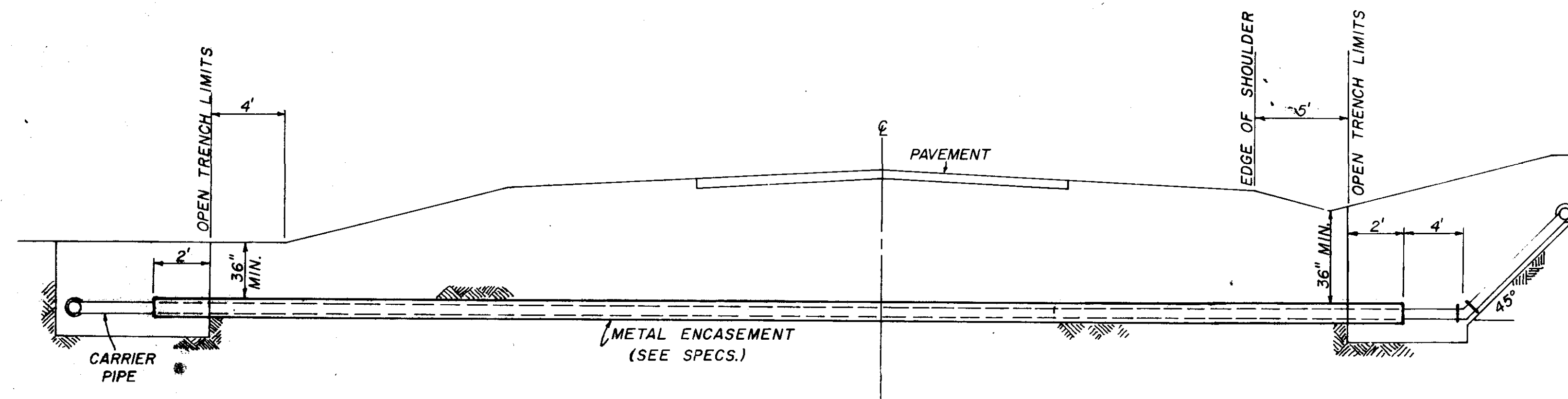
**PWP-01300**



NO.	DATE	REVISION

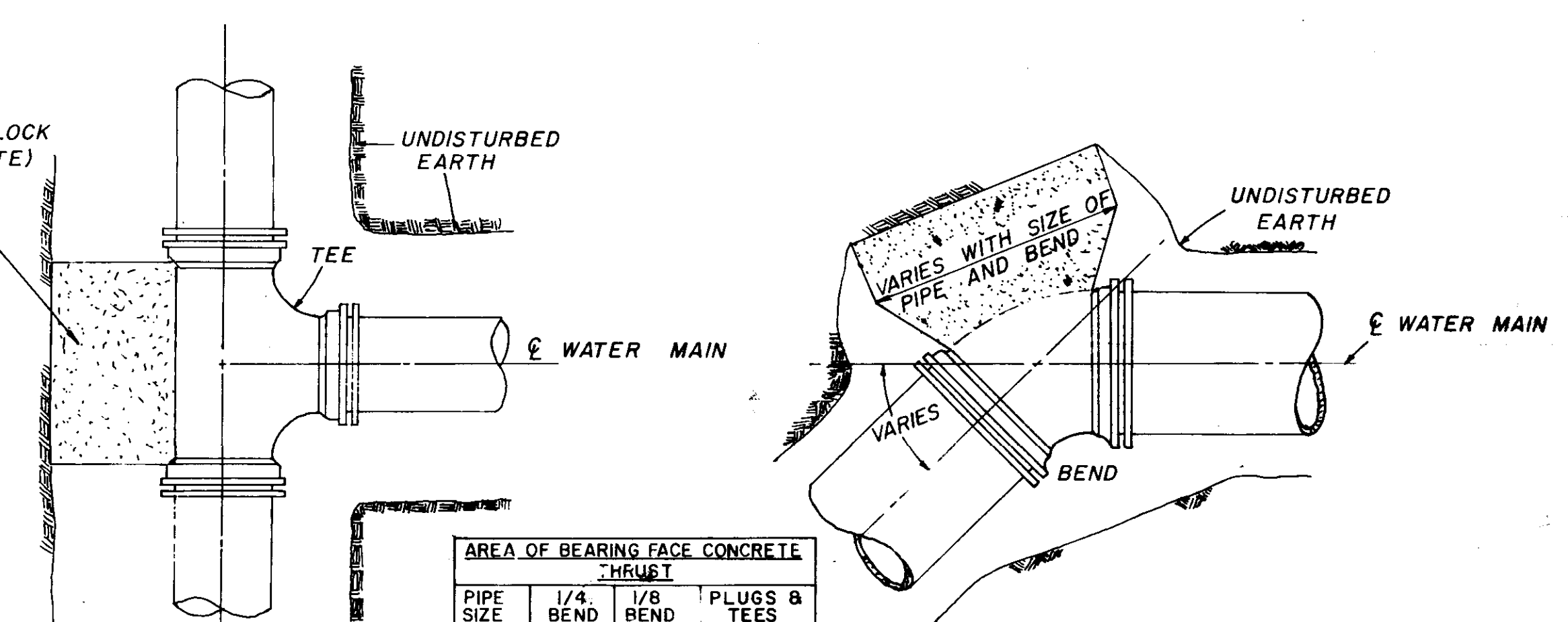


CITY OF RIDGELAND		
PROPOSED 8" WATER MAIN		
WAGGONER ENGINEERING INC. Consulting Engineers — Jackson, Ms.		
DRAWN BY: J.W.P.	DATE: 6-28-89	SHEET NO.
CHECKED BY:	SCALE: 1" = 200'	2 OF 3
APPROVED BY:		



TYPICAL CASED CROSSING

NOTE: COMPENSATION FOR CONCRETE TRUST BLOCKS SHALL BE INCLUDED IN THE UNIT PRICE BID FOR VALVES, FIRE HYDRANTS AND FITTINGS.

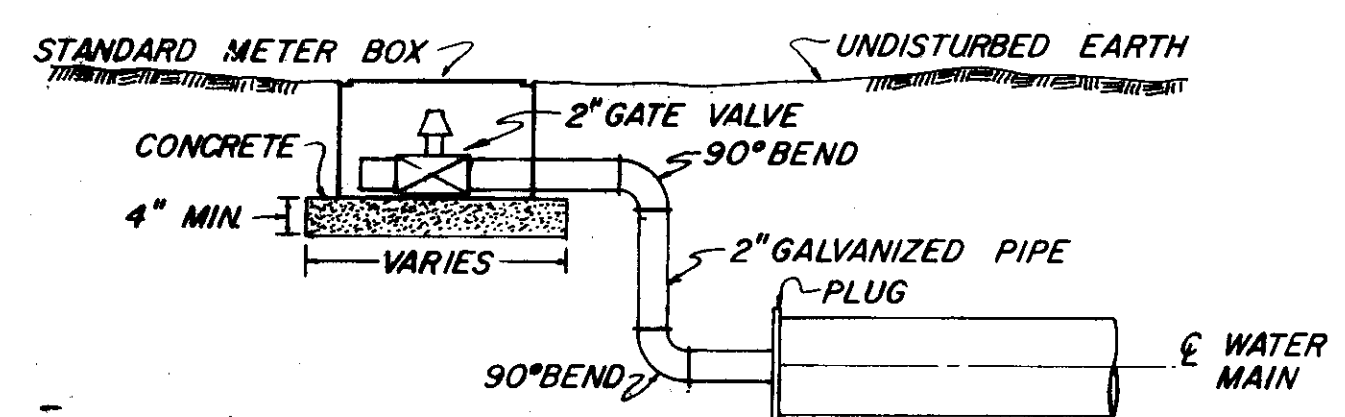


PLAN

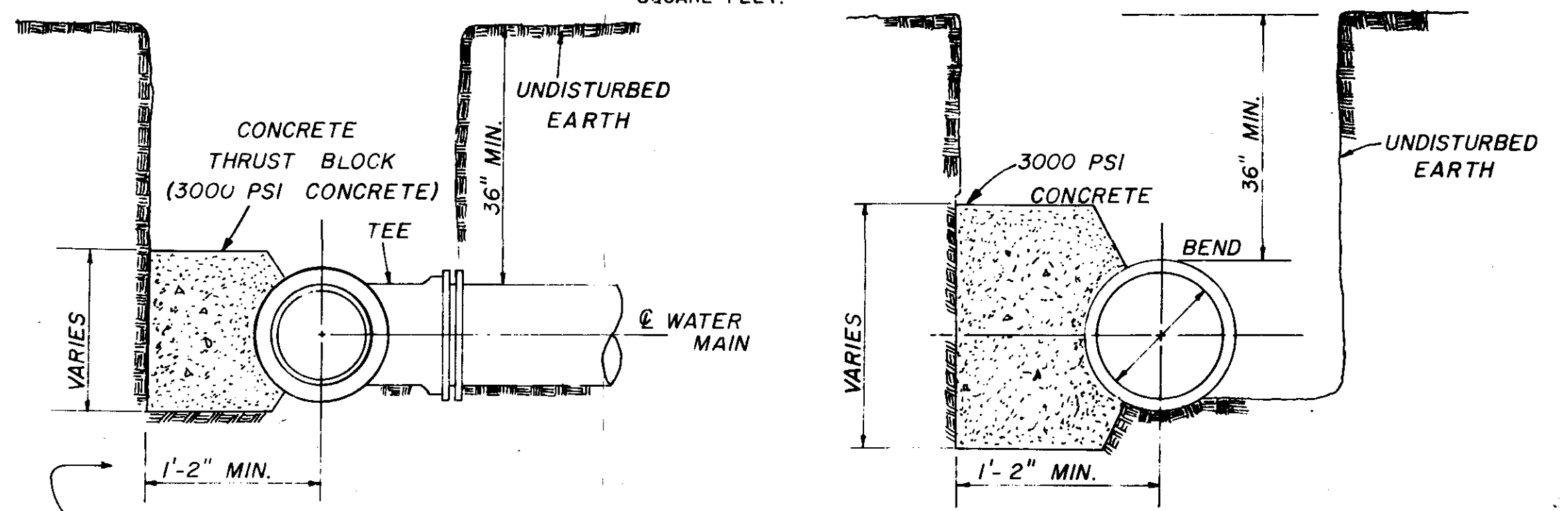
PLAN

PIPE SIZE	1/4" BEND	1/8" BEND	PLUGS & TEES
4-6	3	3	3
8	3	3	3
10	4	3	3
12	6	3	4
16	11	4	7

NOTE: AREA OF BEARING FACE IN SQUARE FEET.



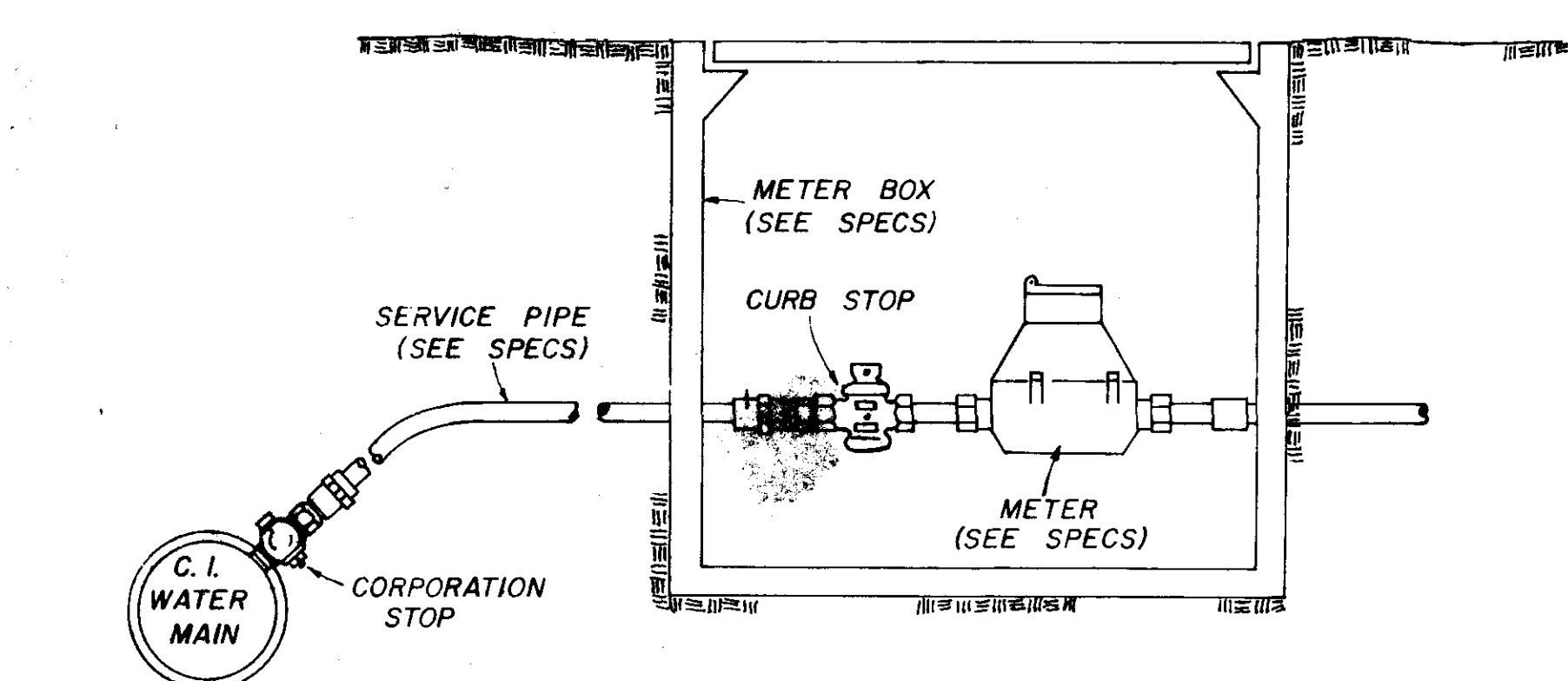
TYPICAL 2" BLOW-OFF DETAIL



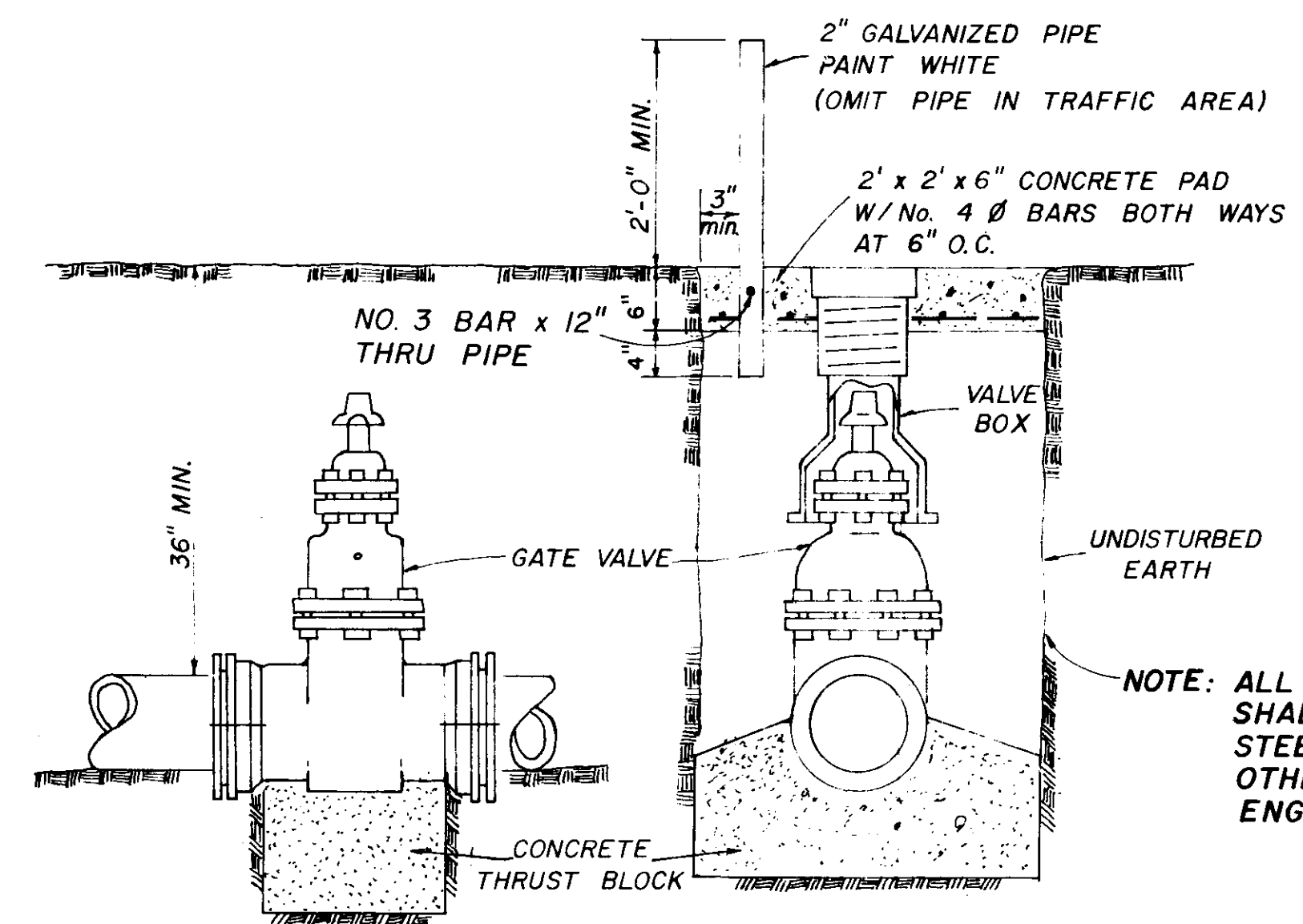
SECTION

SECTION

BLOCKING DETAILS FOR TEES & BENDS



TYPICAL SERVICE ASSEMBLY

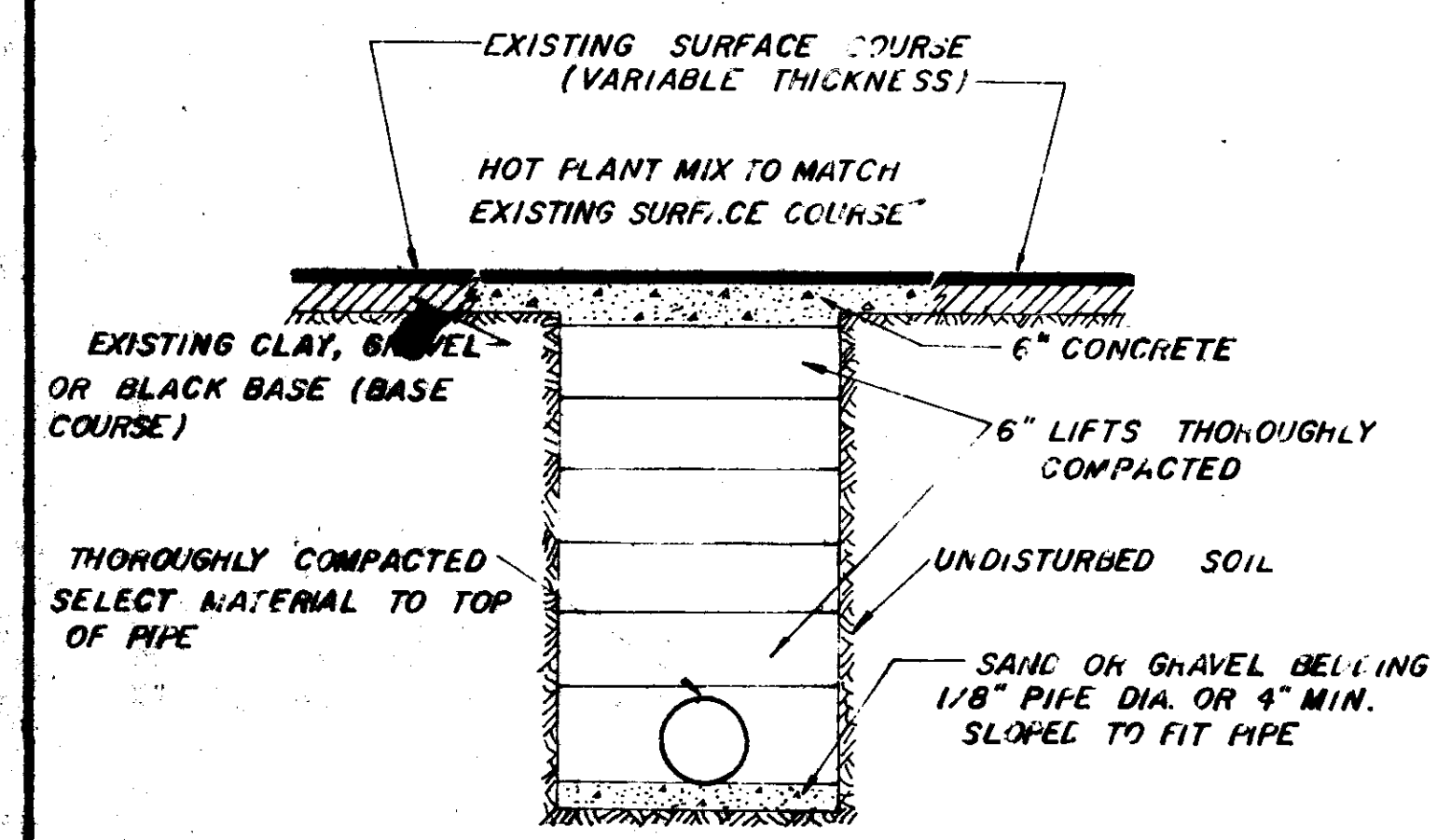
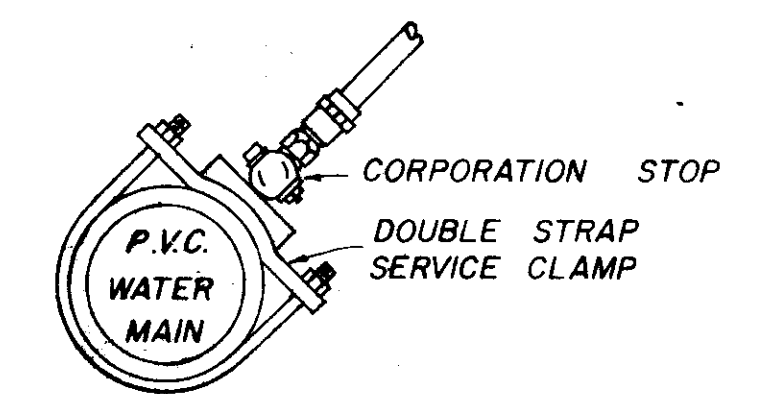


ELEVATION

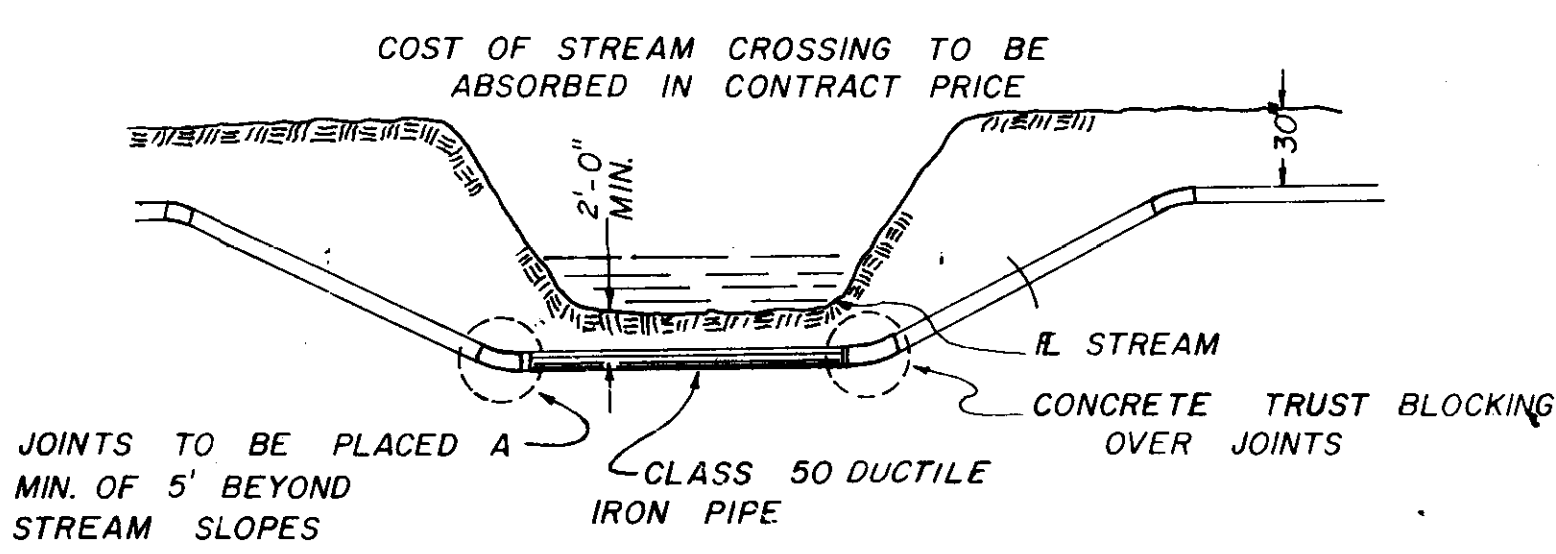
SECTION

TYPICAL VALVE & BOX

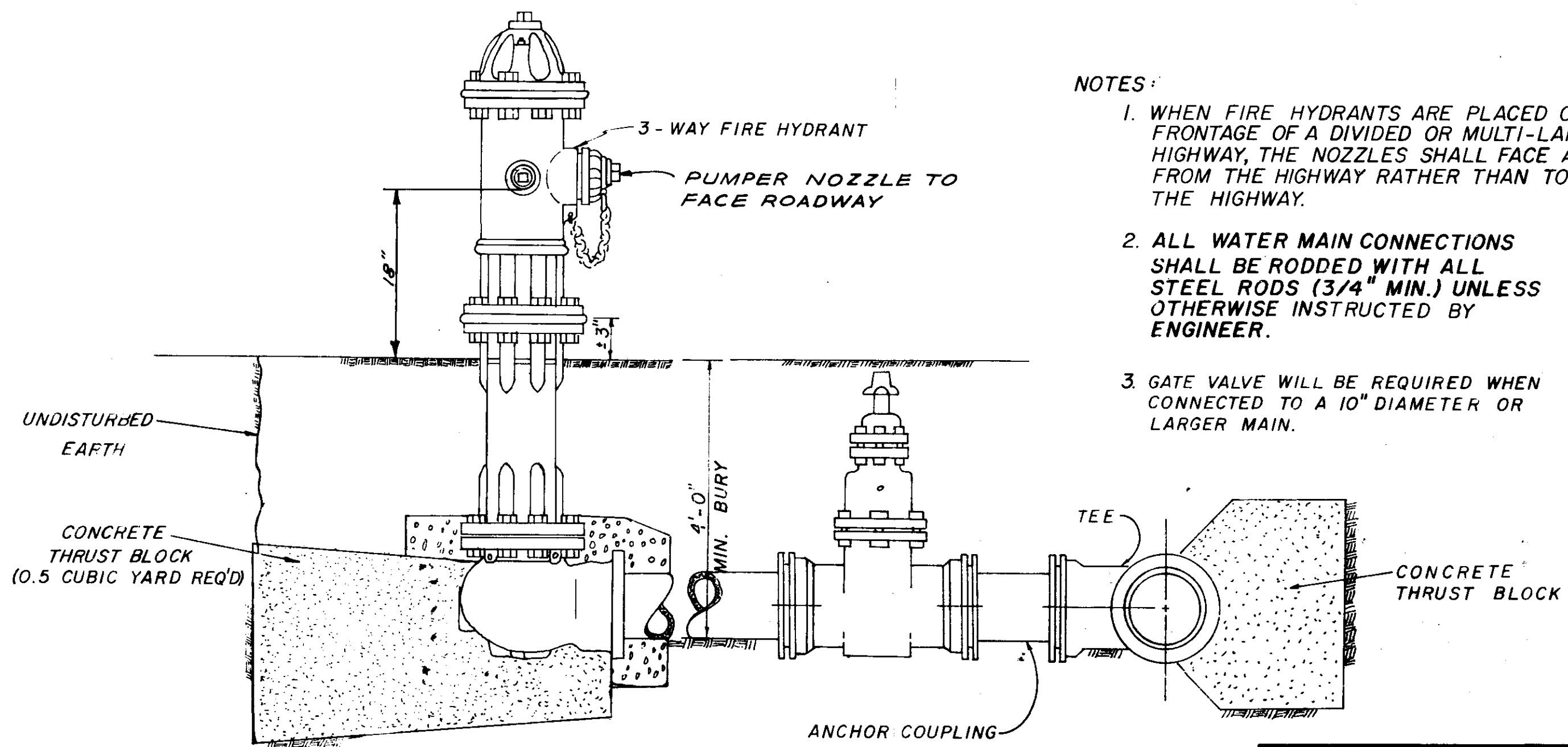
NOTE: ALL WATER MAIN CONNECTIONS SHALL BE RODDED WITH ALL STEEL RODS (3/4" MIN.) UNLESS OTHERWISE INSTRUCTED BY ENGINEER.



STREET REPAIR OF OPEN CUT



TYPICAL STREAM CROSSING



TYPICAL FIRE HYDRANT

- NOTES:
1. WHEN FIRE HYDRANTS ARE PLACED ON THE FRONTAGE OF A DIVIDED OR MULTI-LANE HIGHWAY, THE NOZZLES SHALL FACE AWAY FROM THE HIGHWAY RATHER THAN TOWARD THE HIGHWAY.
  2. ALL WATER MAIN CONNECTIONS SHALL BE RODDED WITH ALL STEEL RODS (3/4" MIN.) UNLESS OTHERWISE INSTRUCTED BY ENGINEER.
  3. GATE VALVE WILL BE REQUIRED WHEN CONNECTED TO A 10" DIAMETER OR LARGER MAIN.

WATER SYSTEM STANDARD DETAILS