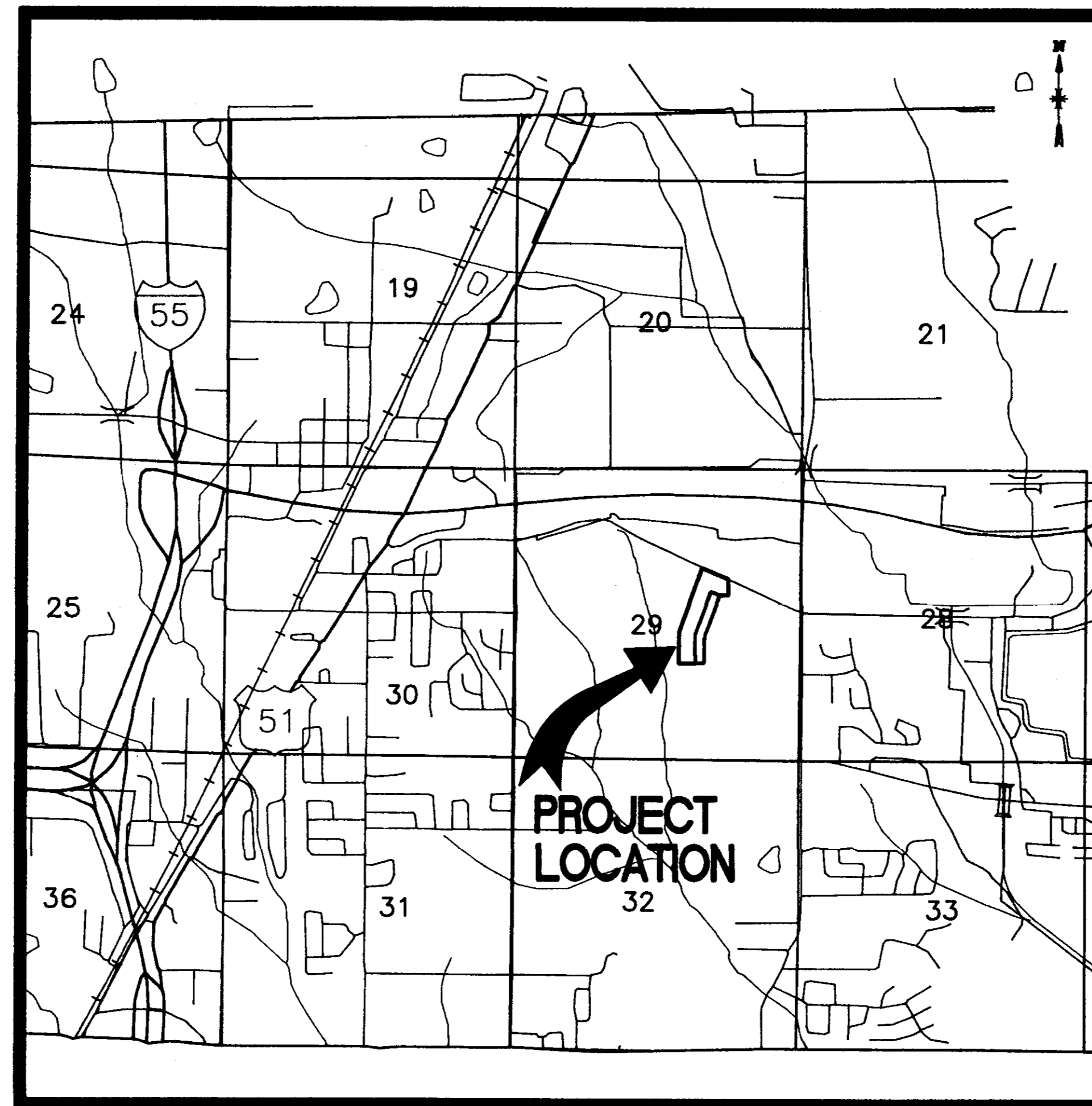
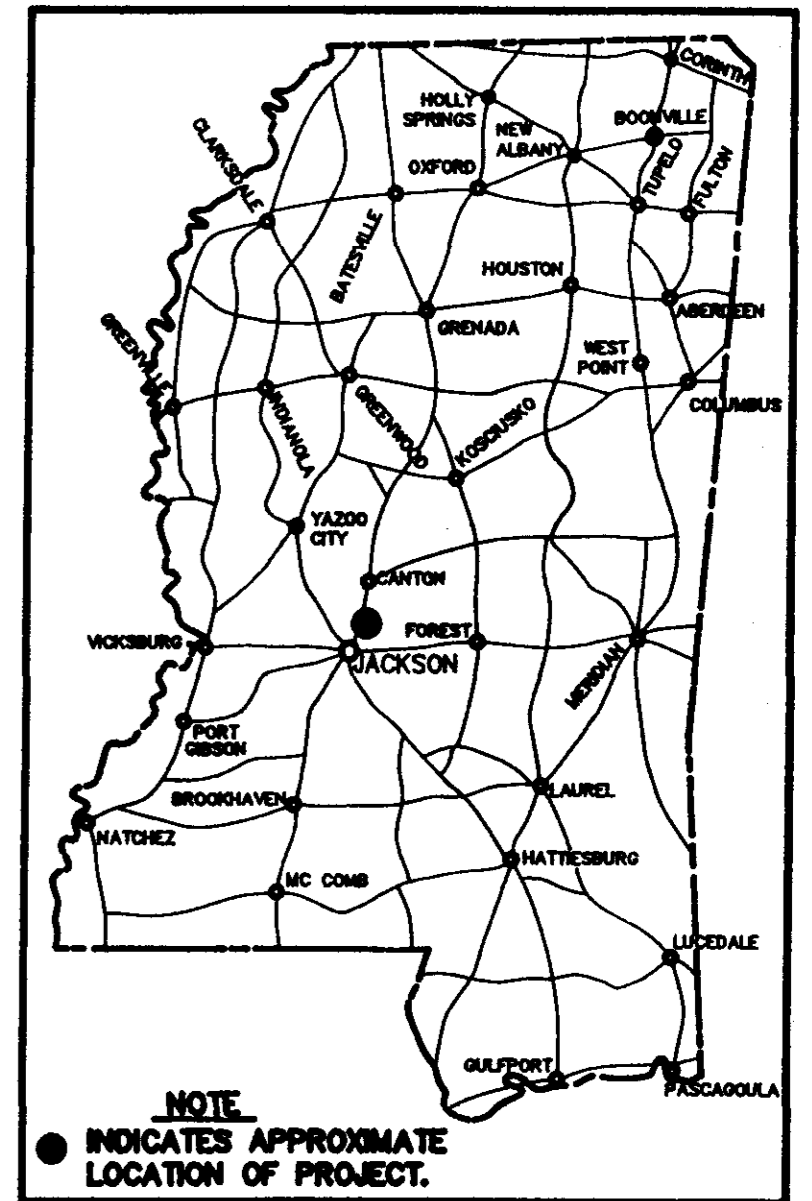


MUIRWOODS SUBDIVISION

PHASE I

MARK S. JORDAN COMPANIES



VICINITY MAP

WILLIFORD, GEARHART & KNIGHT, INC.

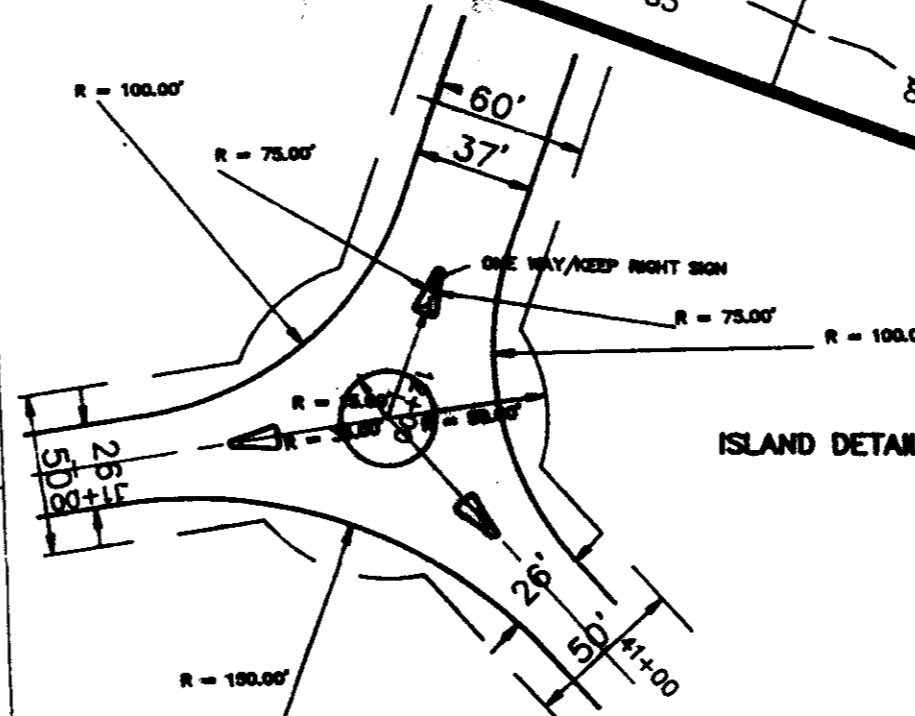
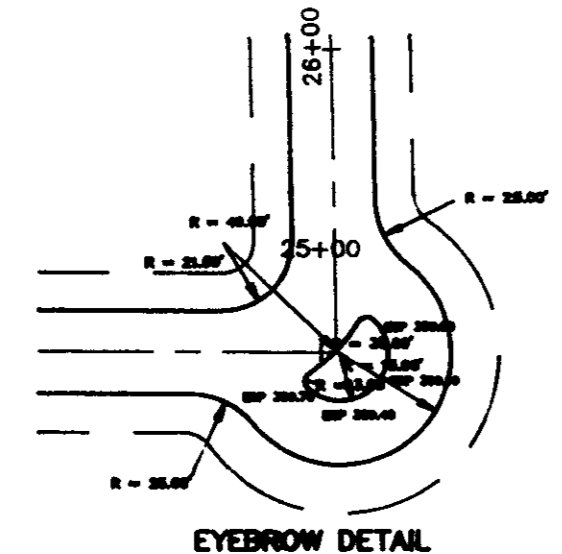
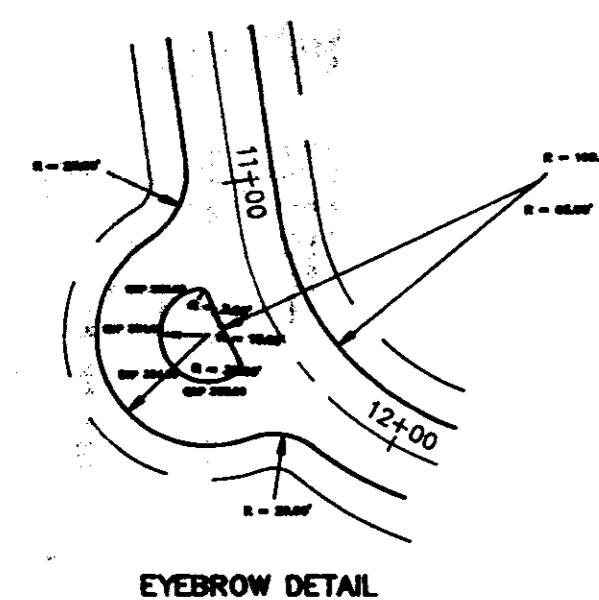
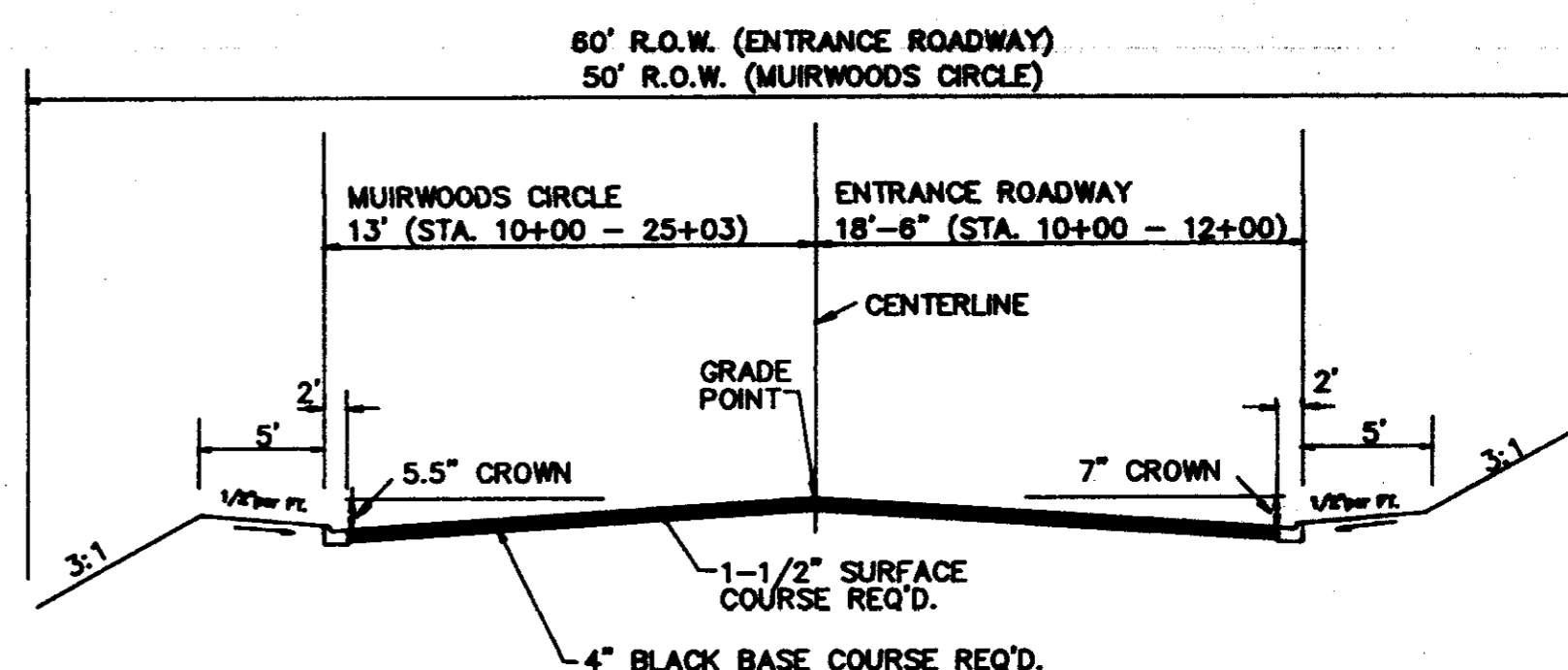
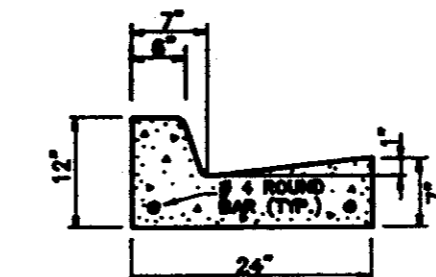
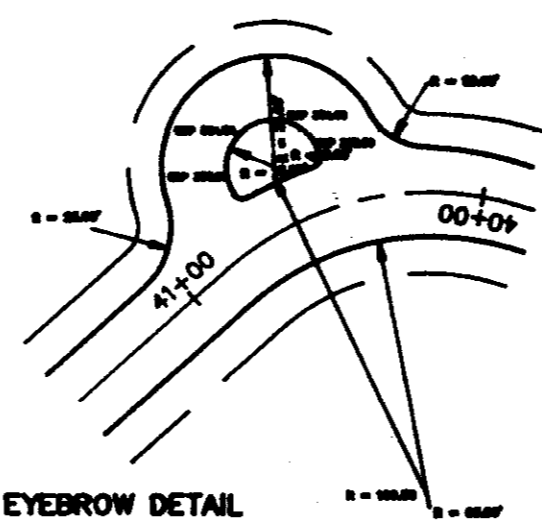
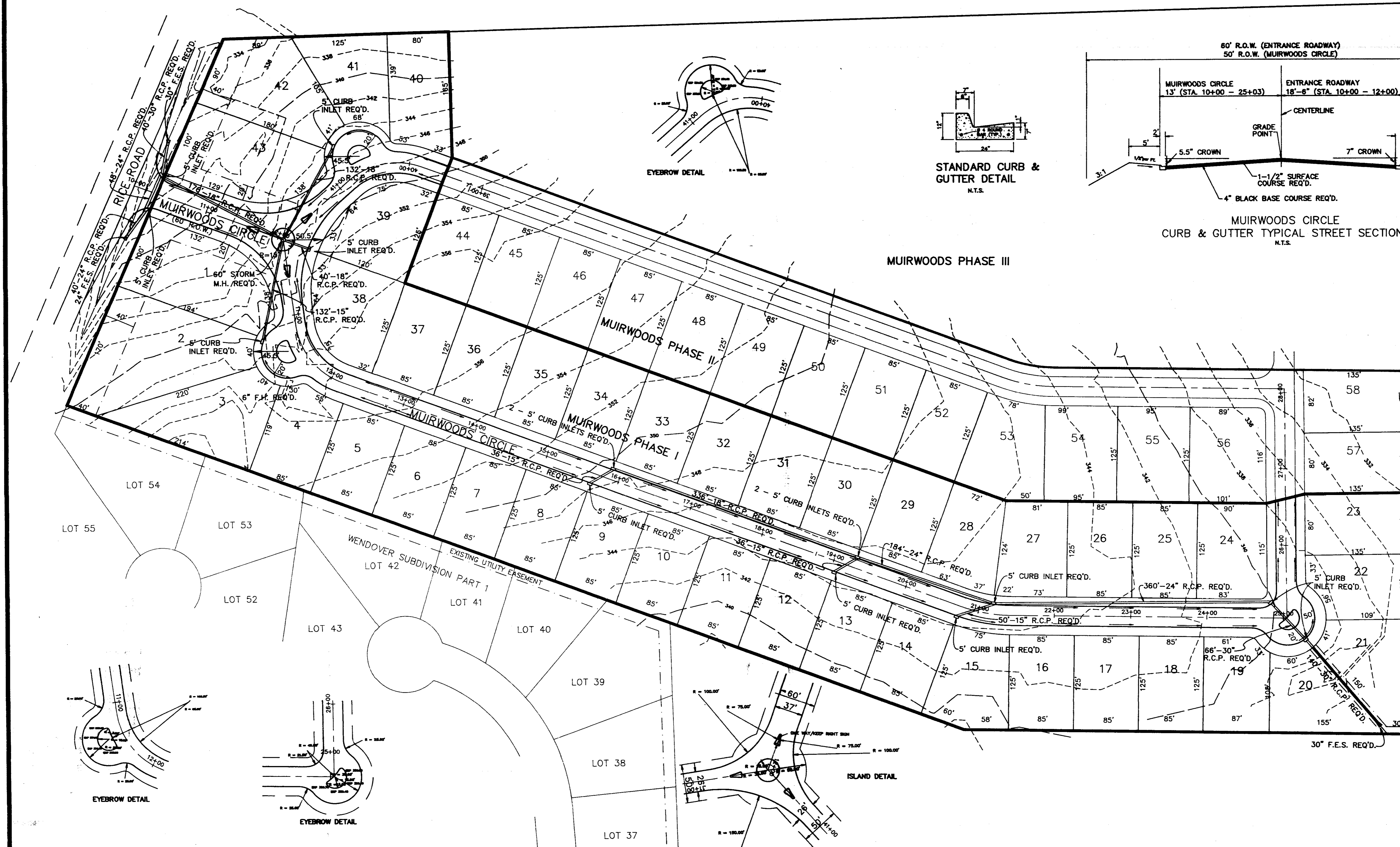
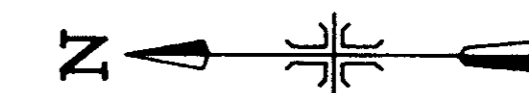
ENGINEERS & SURVEYORS
CANTON, MISSISSIPPI

JUNE 1997

PWP-01302



10' UTILITY EASEMENT RESERVED ALONG ALL LOT FRONTAGES.
 ALL LOTS TO HAVE SIDEWALKS ALONG STREET R.O.W.
 ACCORDING TO CITY OF RIDGELAND SUBDIVISION STANDARDS.



NO.	DATE	REVISIONS	BY

DESIGNED BY MML	DATE 08/20/07
DRAWN BY MML	APPROVED BY CWW
REVIEWED BY CWW	SCALE 1" = 80'

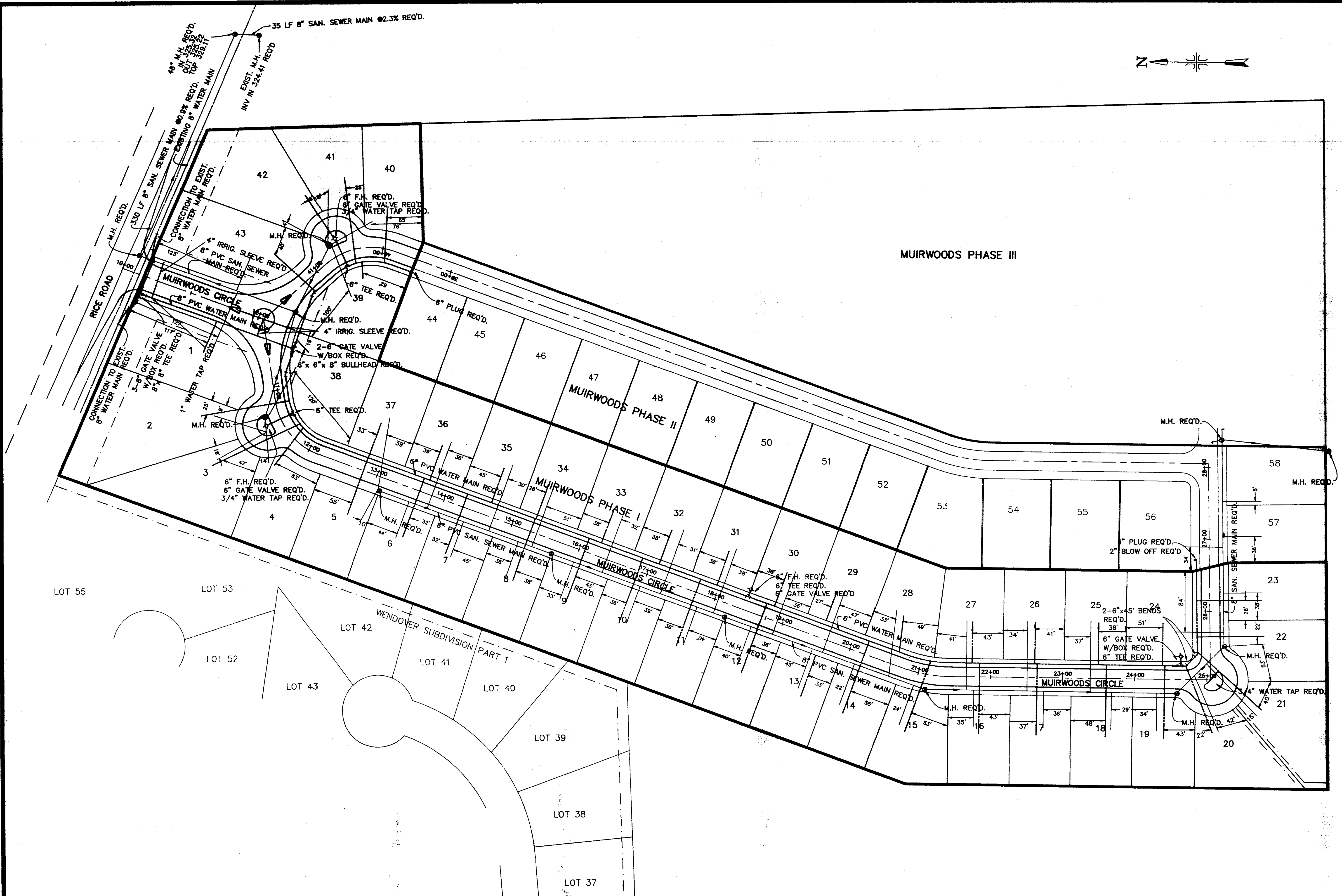
WILLIFORD, GEARHART & KNIGHT, INC.
 ENGINEERS & SURVEYORS

MUIRWOODS SUBDIVISION - PHASE I
 RIDGELAND, MISSISSIPPI
 DRAINAGE AND GEOMETRIC LAYOUT

5-07-08080
 WCK-8 - 07-200
 SHEET NO.
 1 OF 8



MUIRWOODS PHASE III



NO.	DATE	REVISIONS

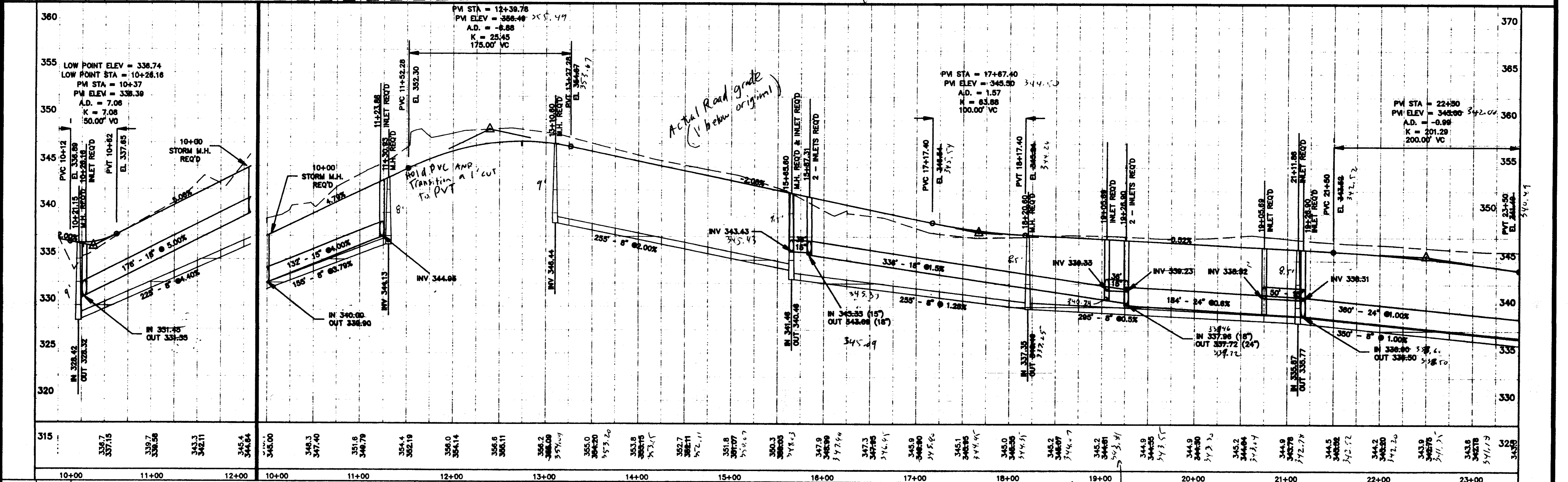
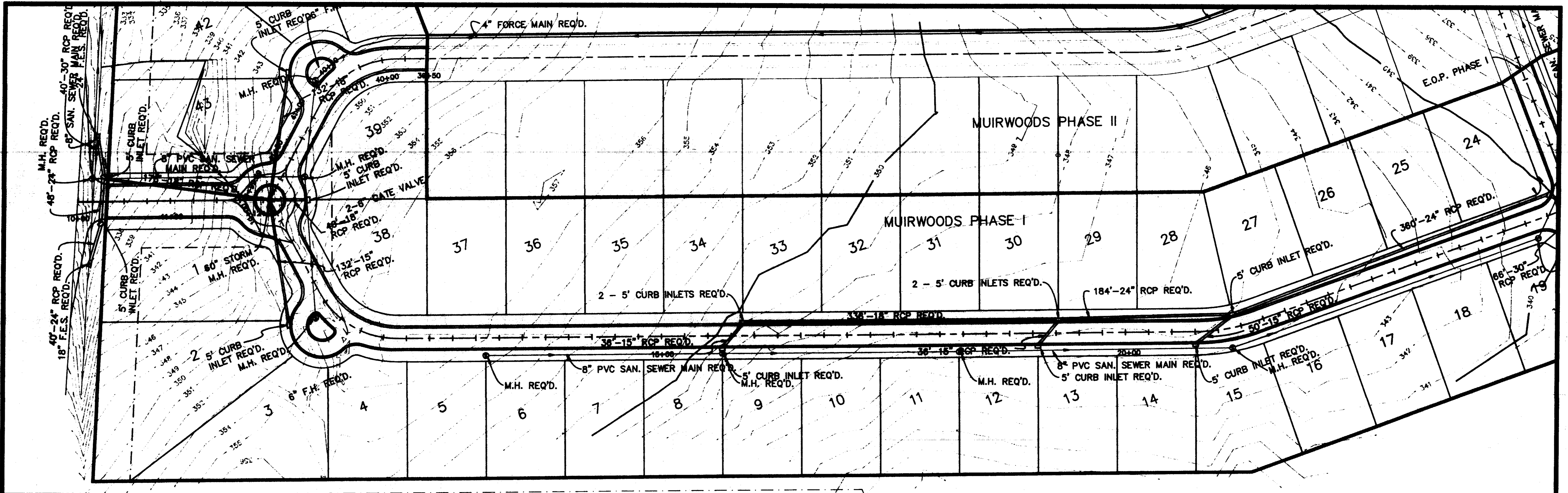
DESIGNED BY AM	DATE 08/04/07
DRAWN BY AM	APPROVED BY GHW
REVIEWED BY GHW	SCALE 1" = 40'



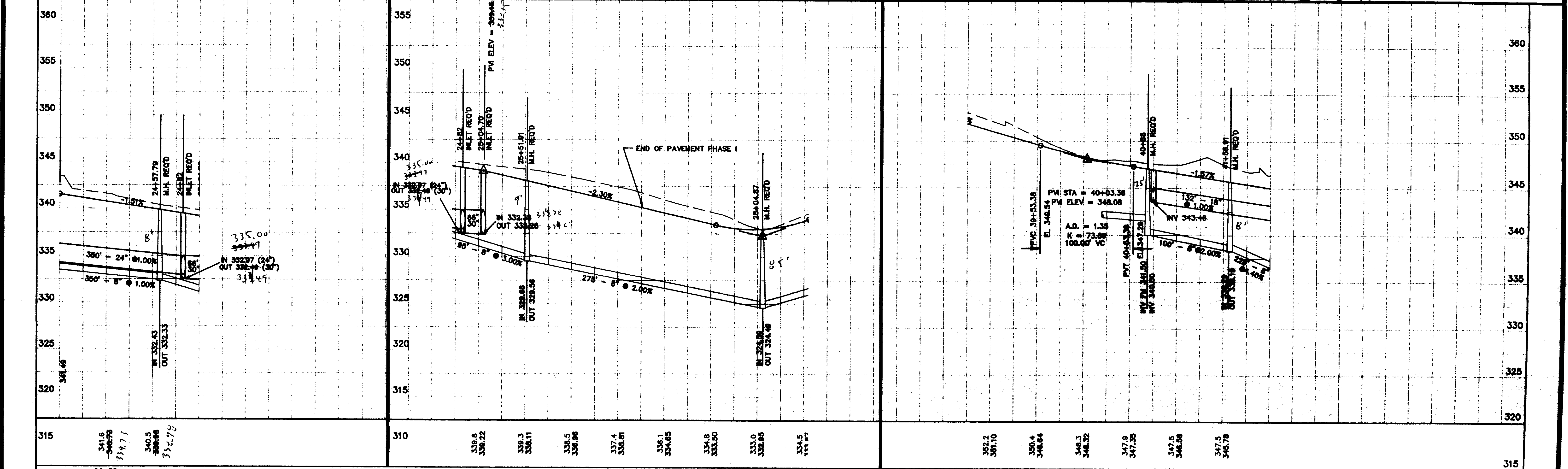
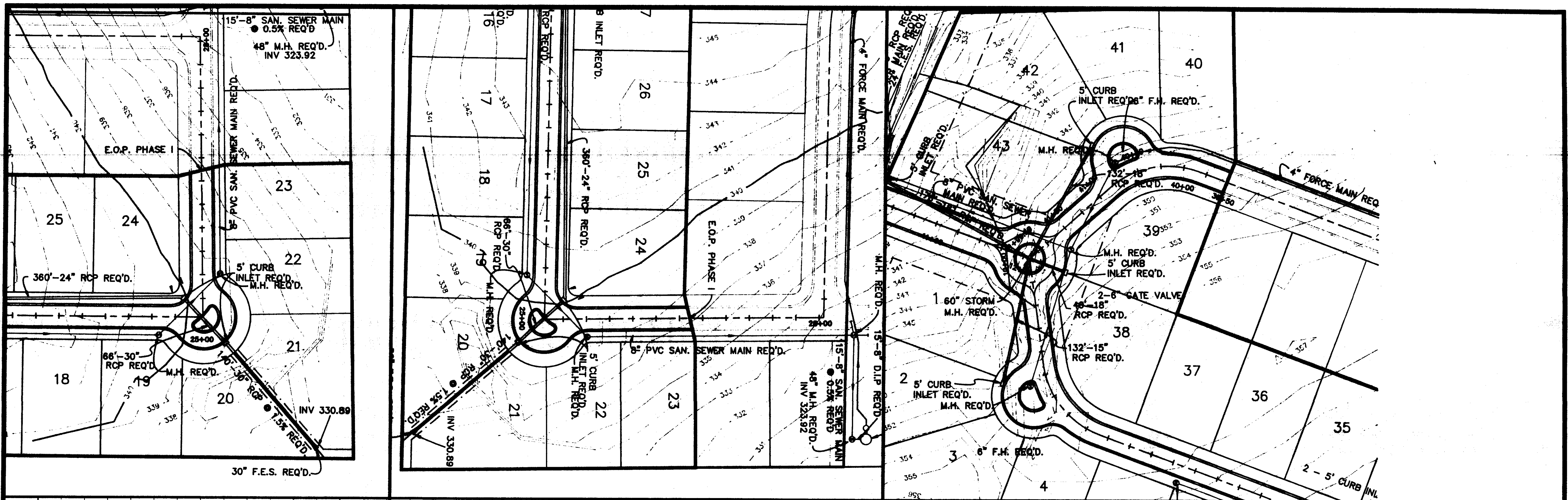
WILLIFORD, GEARHART & KNIGHT, INC.
ENGINEERS & SURVEYORS

MUIRWOODS SUBDIVISION - PHASE I
RIDGELAND, MISSISSIPPI
WATER AND SEWER LAYOUT

5-07-1000170007
WKG# - 07-000
SHEET NO.
2 OF 08



DESIGNED BY G.S.B.	DATE 08/08/07		WILLIFORD, GEARHART & KNIGHT, INC. ENGINEERS & SURVEYORS	MUIRWOODS SUBDIVISION - PHASE I RIDGELAND, MISSISSIPPI PLAN / PROFILE	NO.	DATE	REVISIONS	BY	SCALE 1" = 80'	SHEET NO. 3 OF 8
DRAWN BY G.S.B.	APPROVED BY G.S.B.									
REVIEWED BY G.S.B.										



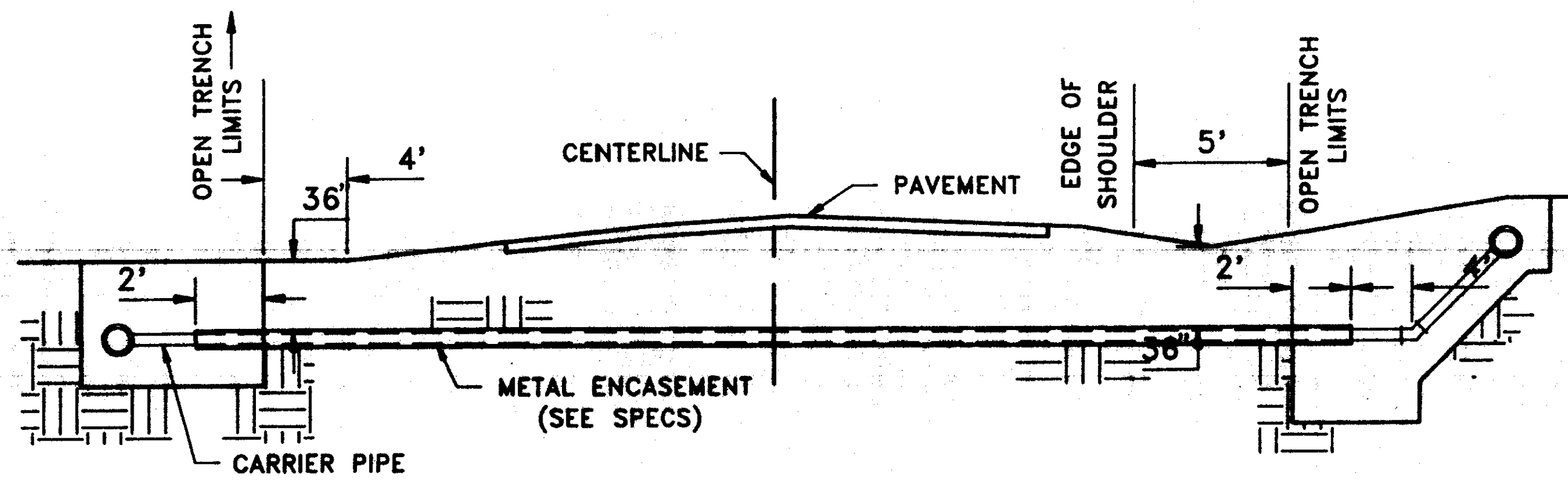
NO.	DATE	REVISIONS	BY

DESIGNED BY	DATE
DRAWN BY	APPROVED BY
REVIEWED BY	SCALE
	1" = 80'

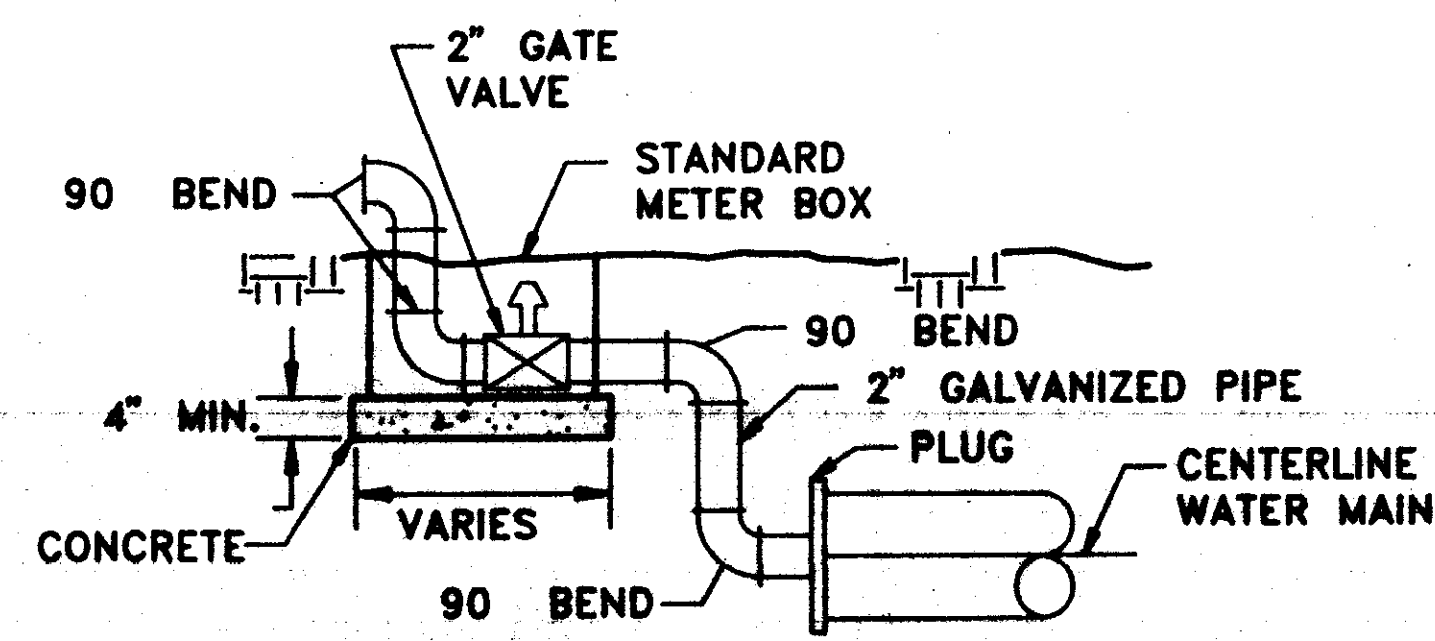
WILLIFORD, GEARHART & KNIGHT, INC.
ENGINEERS & SURVEYORS

MURWOODS SUBDIVISION - PHASE I
RIDGELAND, MISSISSIPPI
PLAN / PROFILE

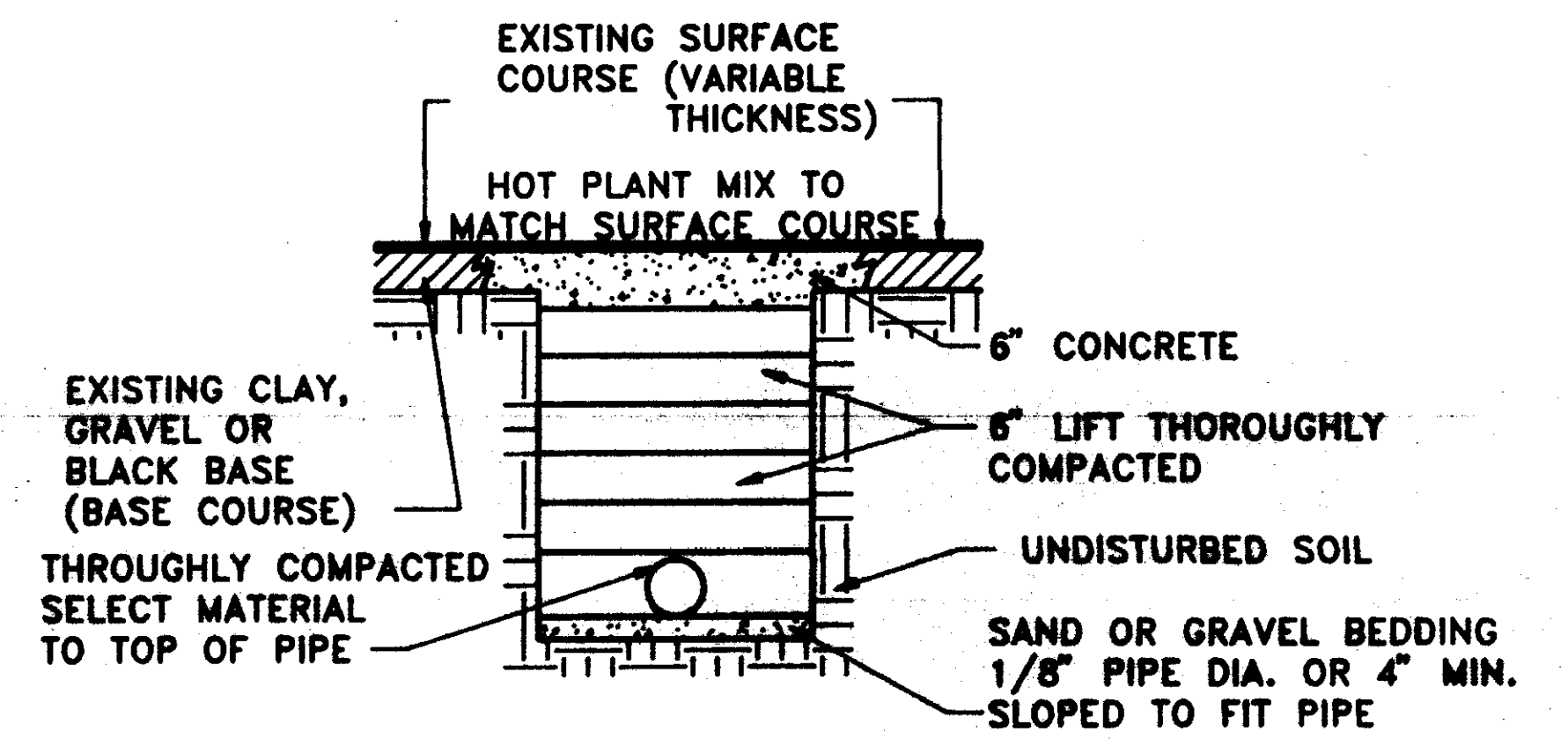
WKS# - 07-100
SHEET NO.
4 OF 8



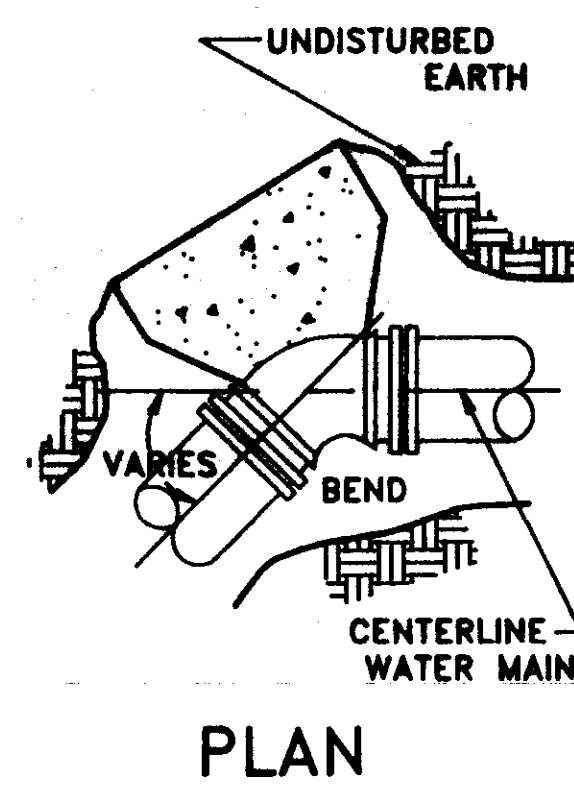
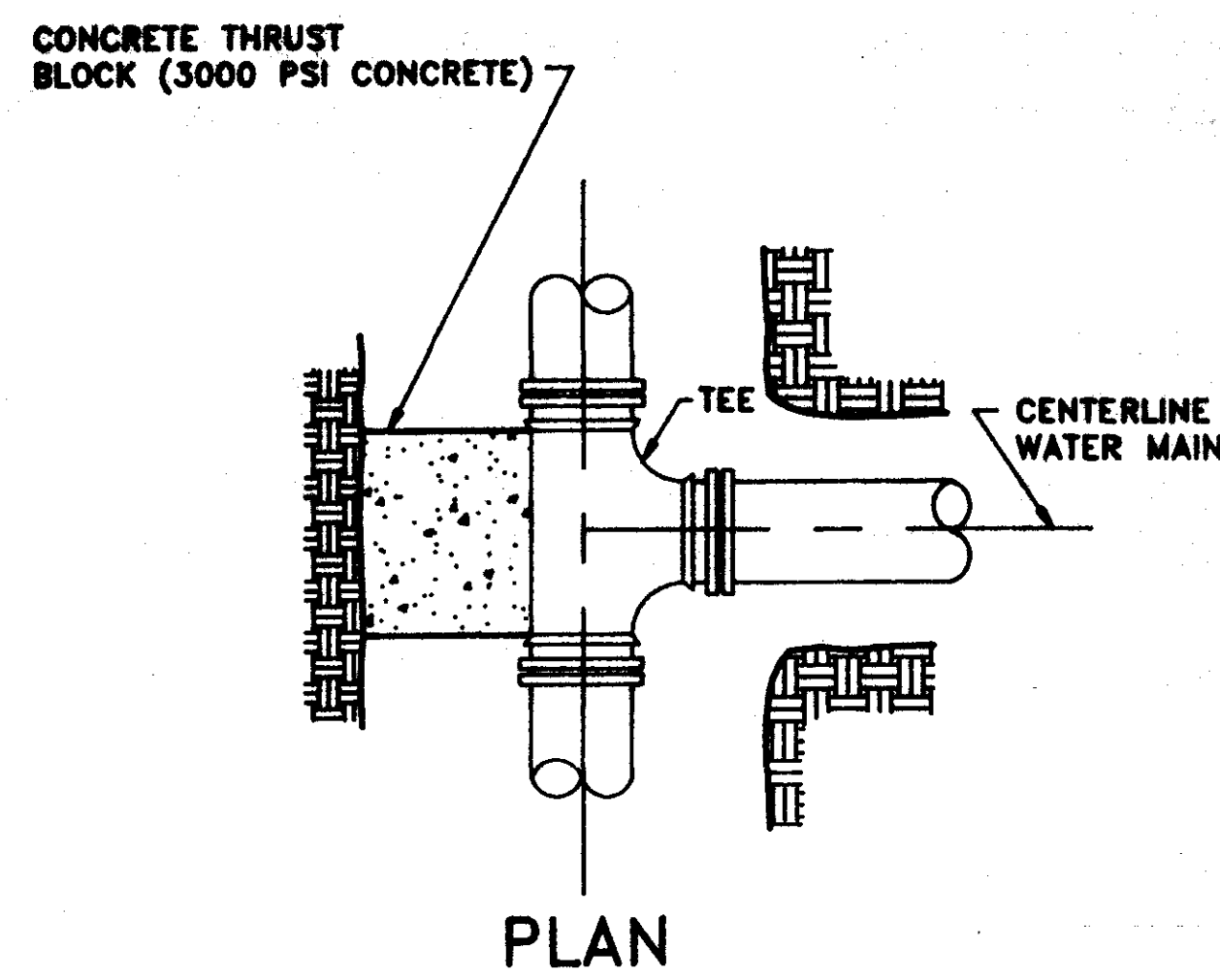
TYPICAL CASSED CROSSING



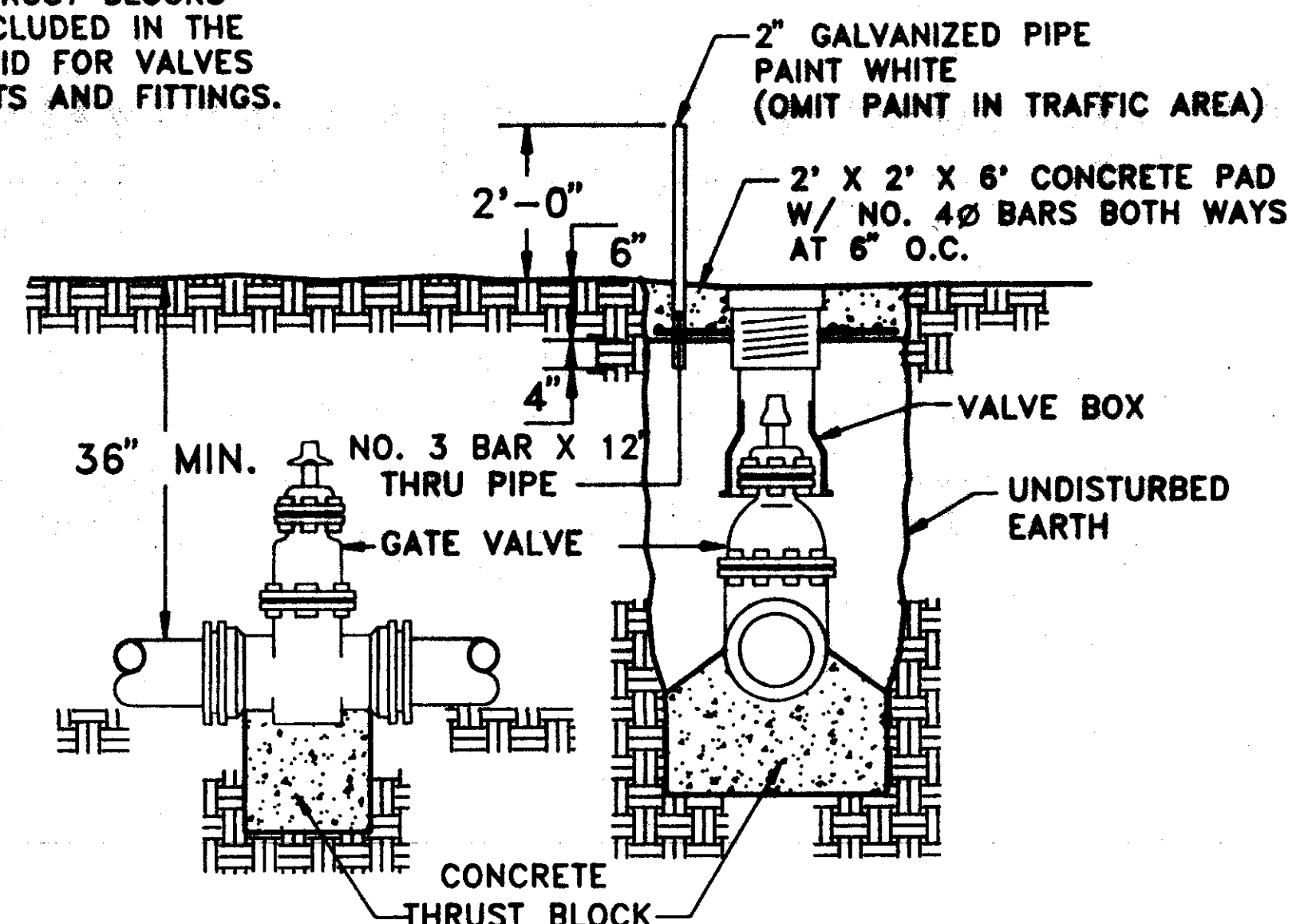
TYPICAL 2" BLOW-OFF DETAIL



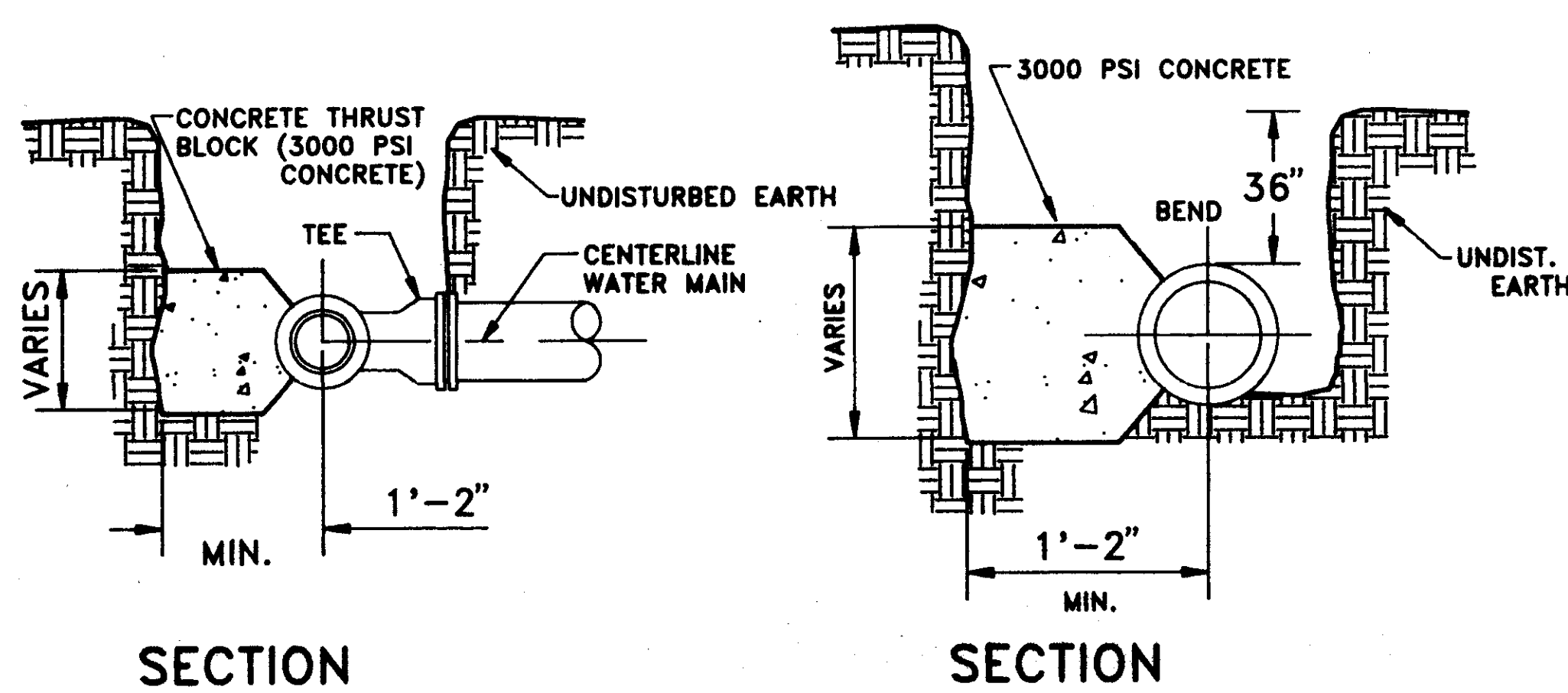
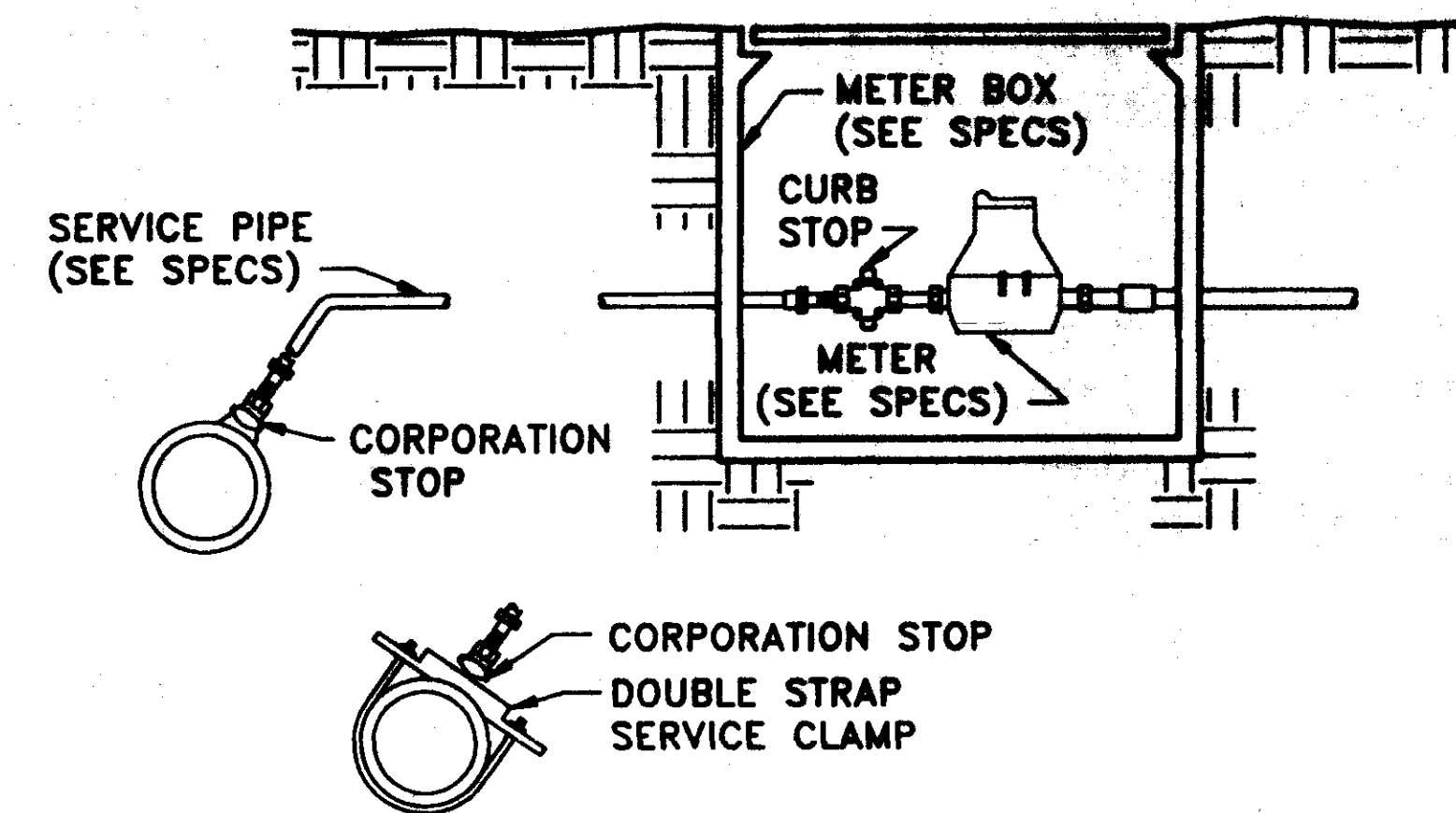
STREET REPAIR OF OPEN CUT



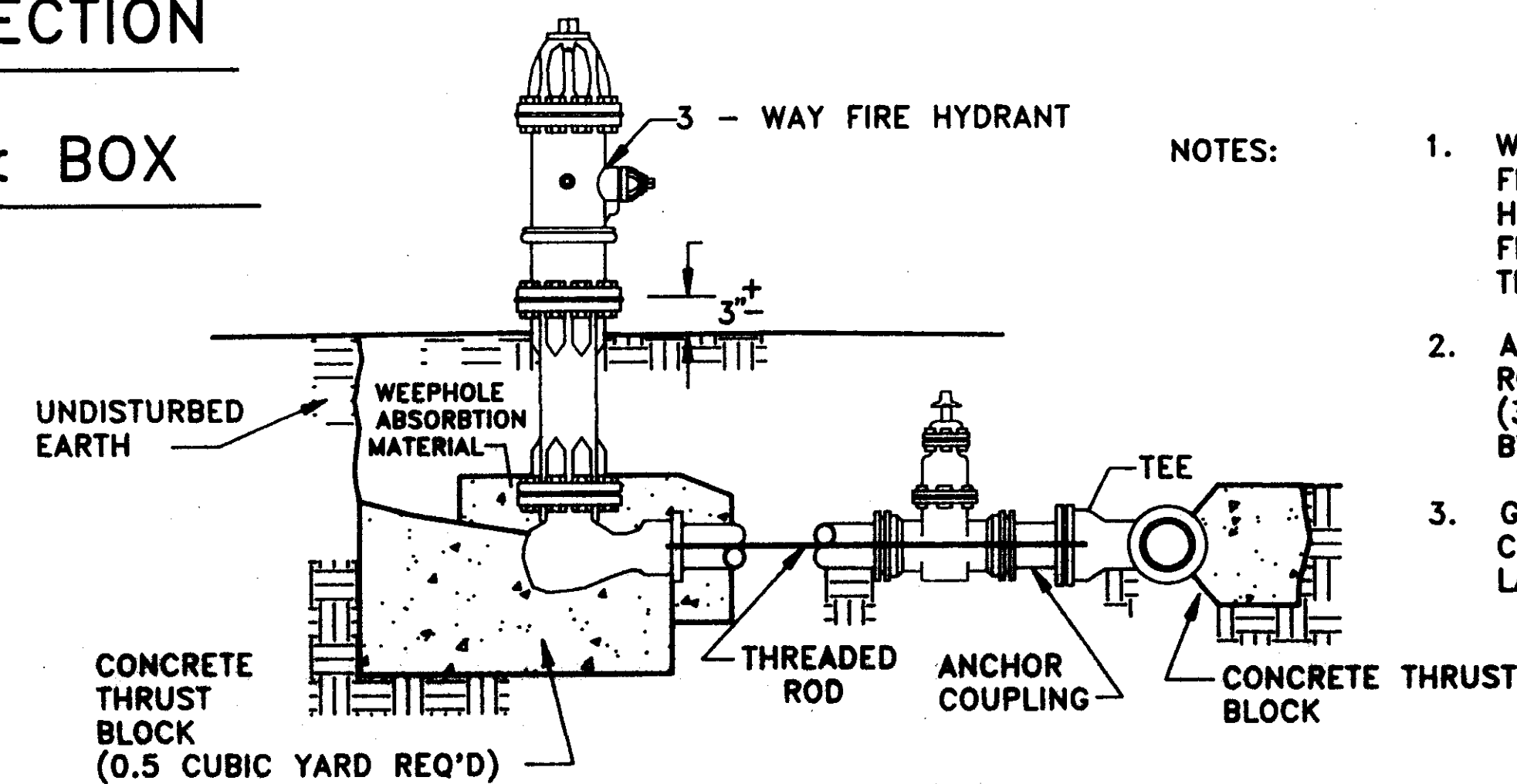
NOTE: COMPENSATION FOR CONCRETE THRUST BLOCKS SHALL BE INCLUDED IN THE UNIT PRICE BID FOR VALVES, FIRE HYDRANTS AND FITTINGS.



ELEVATION SECTION
TYPICAL VALVE & BOX

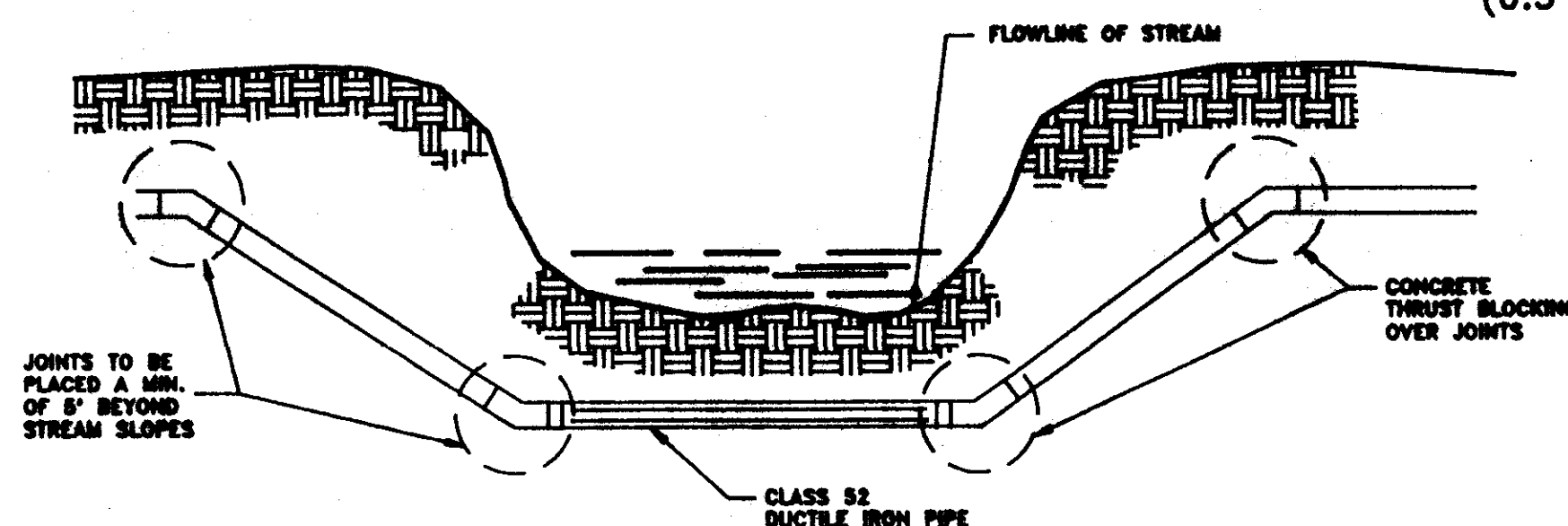


SECTION SECTION
BLOCKING DETAILS FOR TEE'S & BENDS



TYPICAL FIRE HYDRANT

- NOTES:
1. WHEN FIRE HYDRANTS ARE PLACED ON THE FRONTAGE OF A DIVIDED OR MULTI-LANE HIGHWAY, THE NOZZLES SHALL FACE AWAY FROM THE HIGHWAY RATHER THAN TOWARD THE HIGHWAY.
 2. ALL WATER MAIN CONNECTIONS SHALL BE RODDED WITH ALL STEEL THREADED RODS (3/4" MIN.) UNLESS OTHERWISE INSTRUCTED BY THE ENGINEER.
 3. GATE VALVES WILL BE REQUIRED WHEN CONNECTED TO A 10" DIAMETER OR LARGER MAIN.



TYPICAL STREAM CROSSING

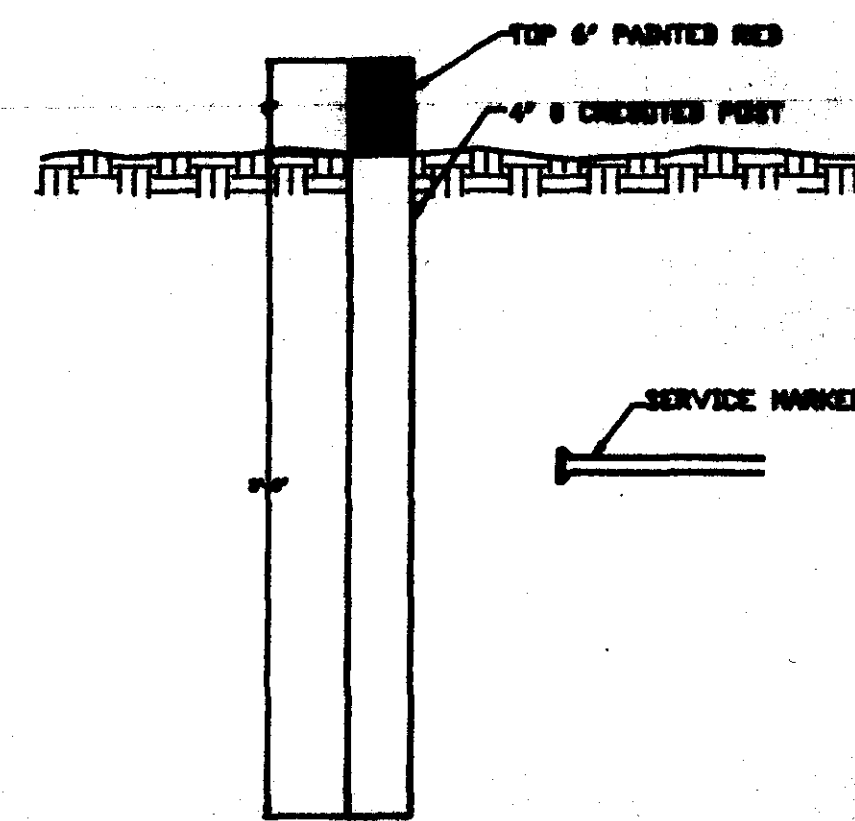
NO.	DATE	REVISIONS	BY

DESIGNED BY G.D.	DATE 09/01
DRAWN BY G.D.	APPROVED BY G.W.
REVIEWED BY G.W.	SCALE AS SH.

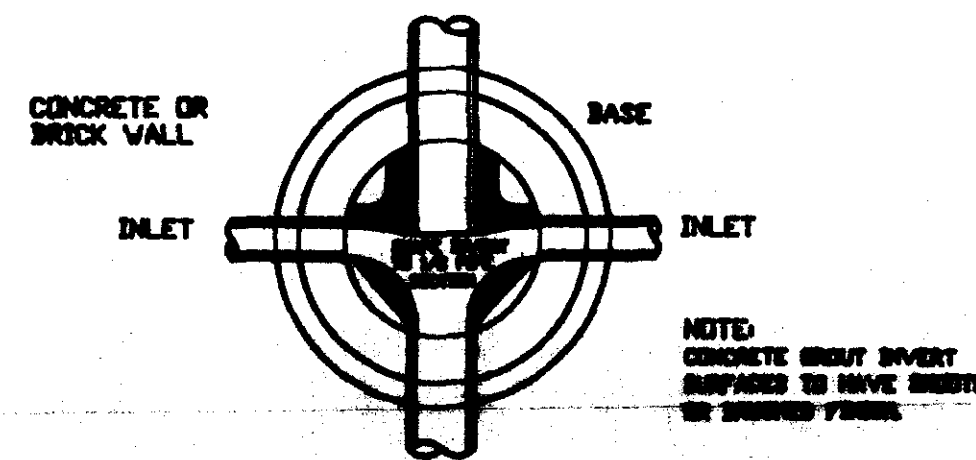
WILLIFORD, GEARHART & KNIGHT, INC.
ENGINEERS & SURVEYORS

MURWOOD SUBDIVISION - PHASE I
RIDGELAND, MISSISSIPPI
WATER MAIN

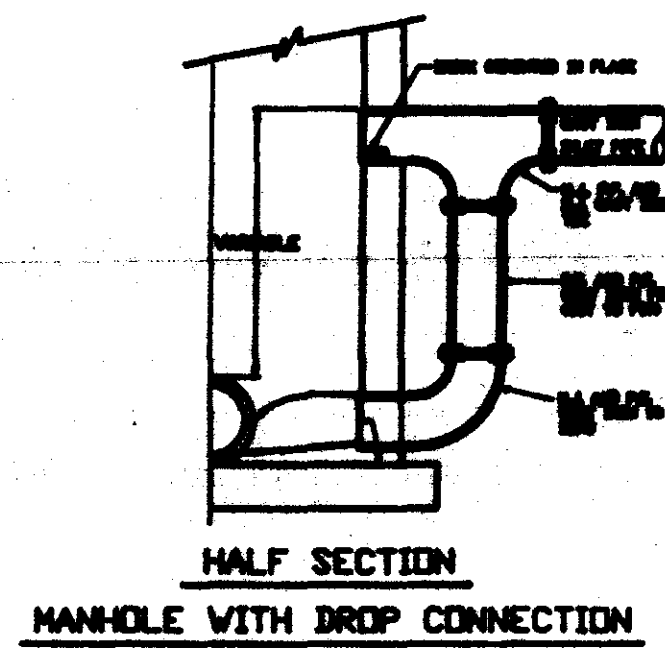
WOK# - 0200	SHEET NO. 8
5	OF 8



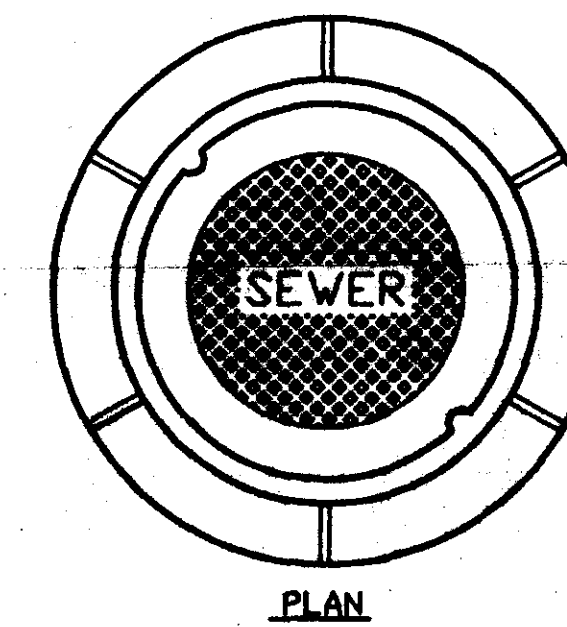
SEWER SERVICE MARKER



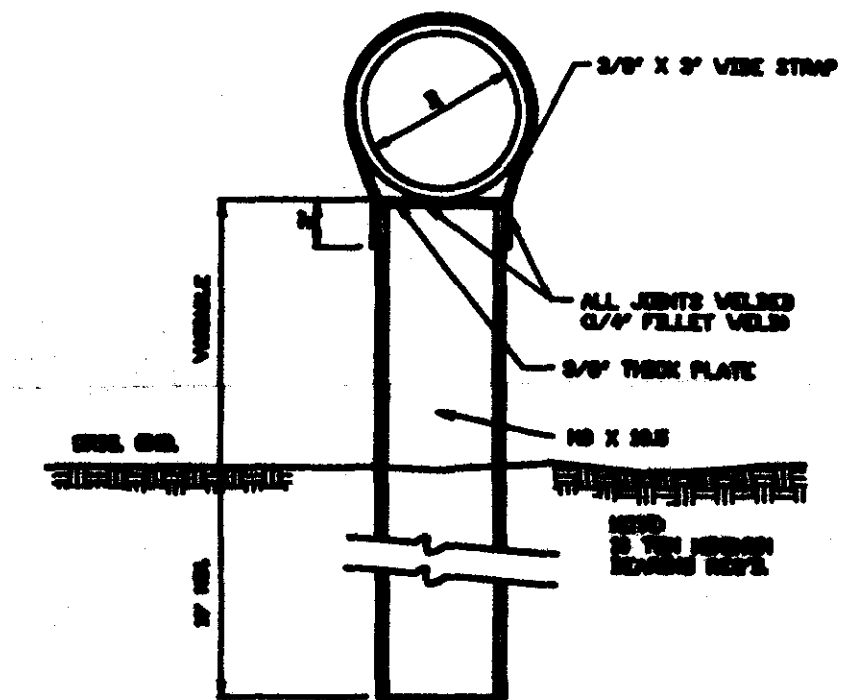
PLAN OF MANHOLE FLOW CHANNELS



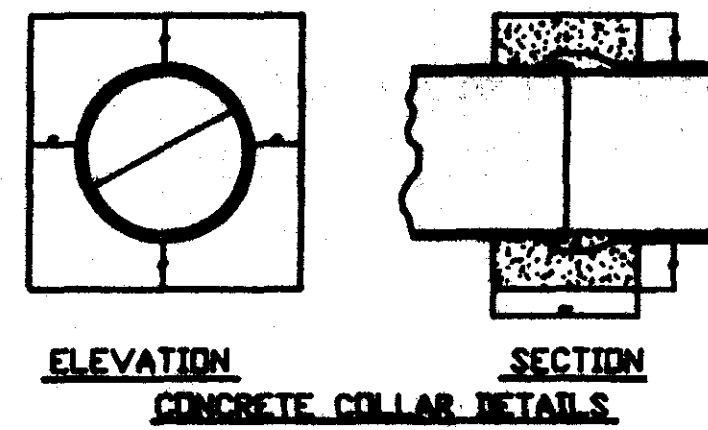
HALF SECTION MANHOLE WITH DROP CONNECTION



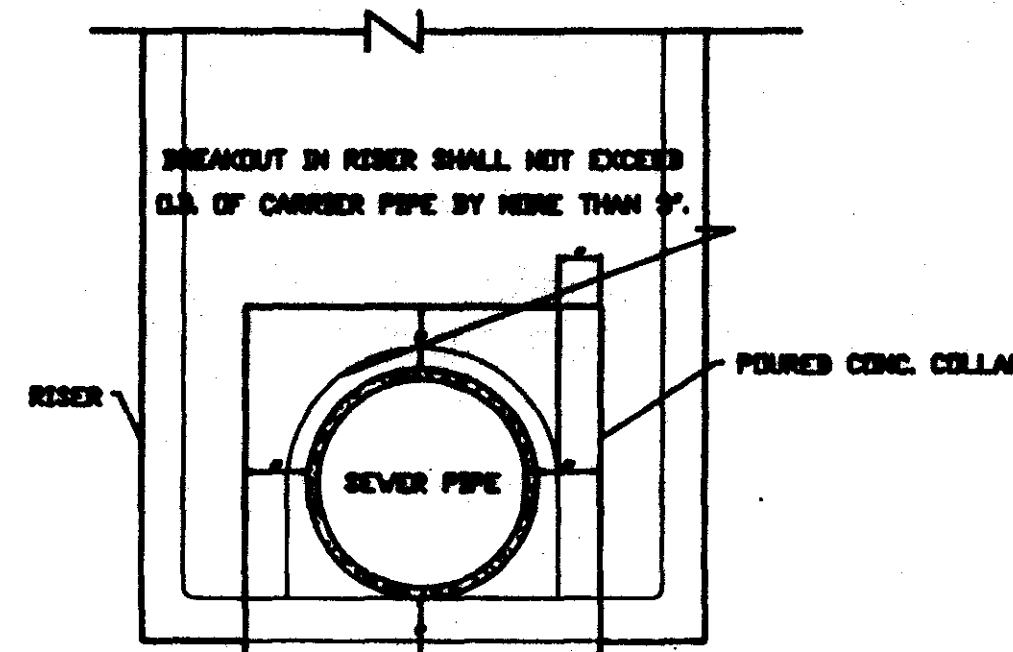
MANHOLE CASTING



DETAIL TYPE 'A' PIER

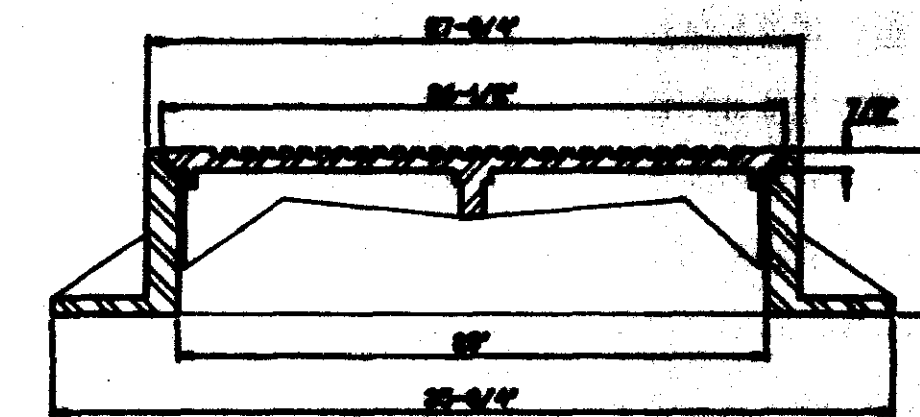


ELEVATION SECTION CONCRETE COLLAR DETAILS



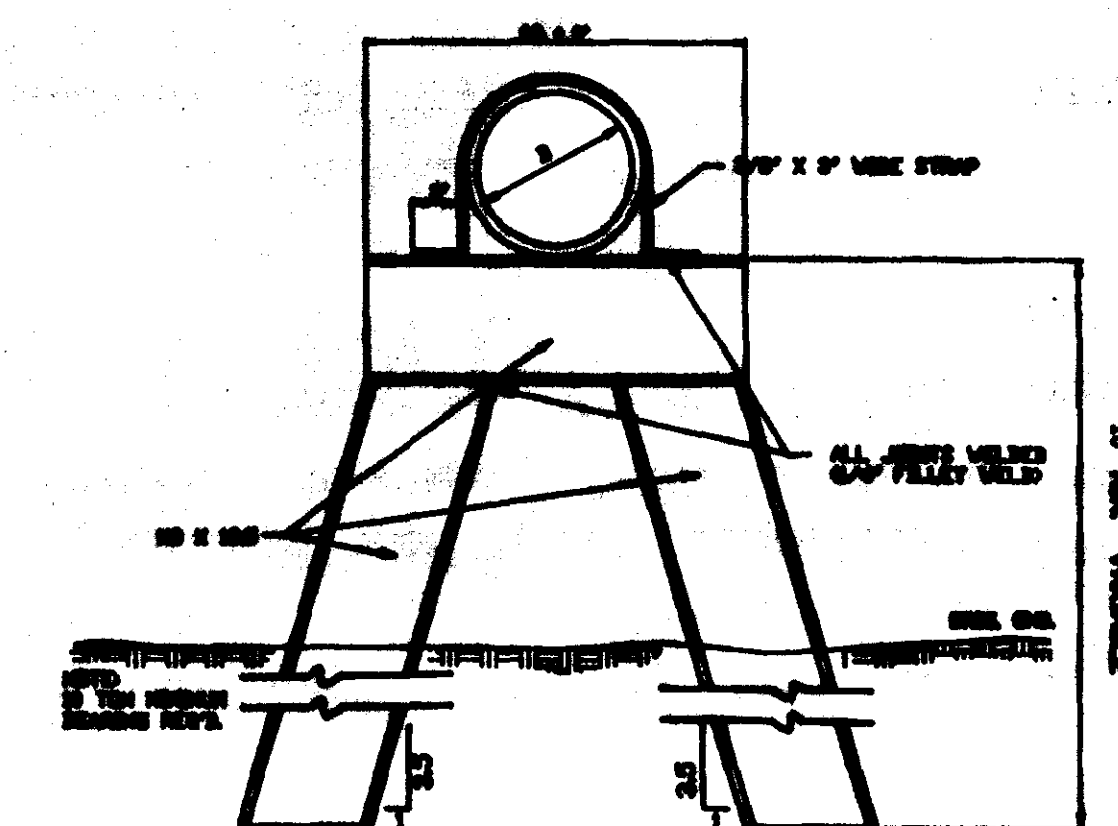
ELEVATION

CONCRETE COLLAR AT MANHOLE CONNECTION

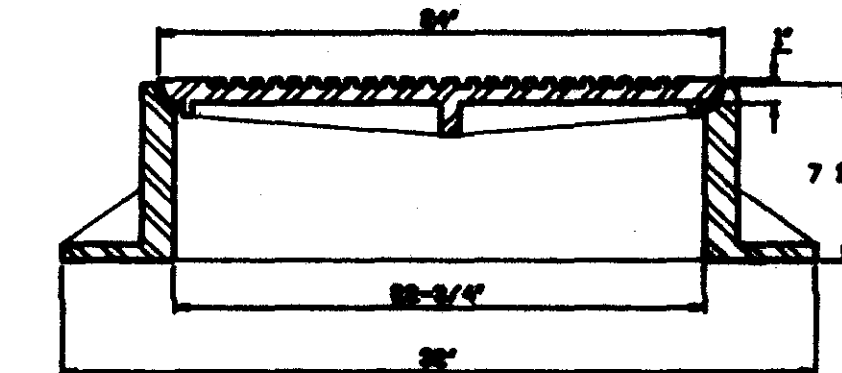


SECTION TYPE 'A' MANHOLE CASTING

NOTE: 1. USE TYPE 'A' MANHOLE CASTING IN STREET ROW.
2. USE TYPICAL NO. 1 GRADE, STANDARD LIGHT WEIGHT CONCRETE OR VULCAN NO. 14-25 CITY OF JACKSON STANDARD (ASB No. 2)

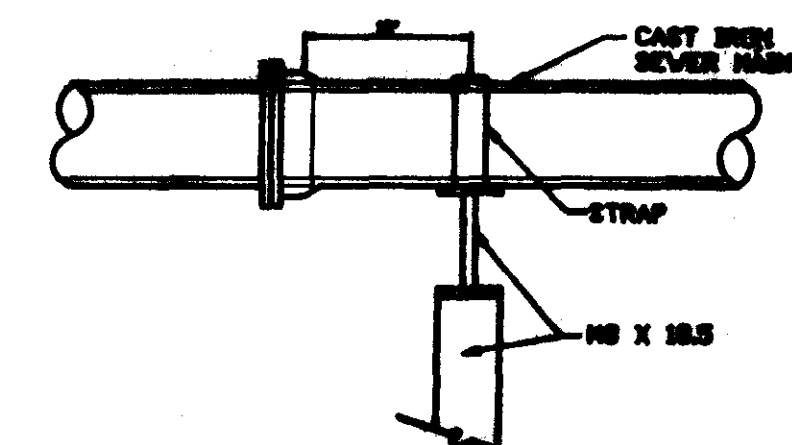


DETAIL TYPE 'B' PIER

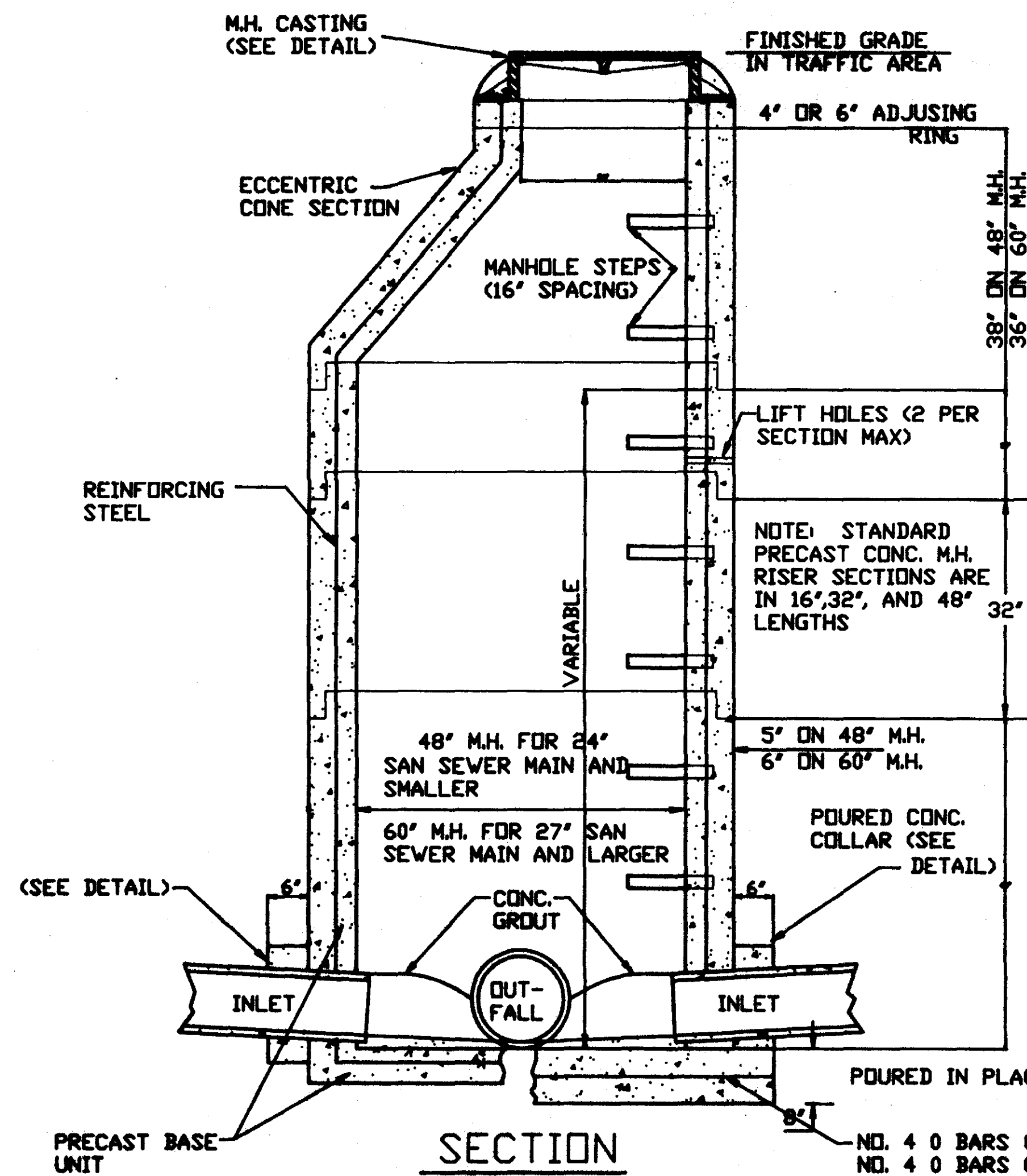


SECTION TYPE 'B' MANHOLE CASTING

NOTE: 1. USE TYPE 'B' MANHOLE CASTING FOR ANY MANHOLE NOT IN A STREET ROW.
2. USE TYPICAL NO. 1 GRADE, STANDARD LIGHT WEIGHT CONCRETE OR VULCAN NO. 14-25 CITY OF JACKSON STANDARD (ASB No. 2) OR S.P.E.L.A. FINISHING NO. C-2-1 (ASB No. 2)



SIDE ELEVATION TYPE 'B' PIER



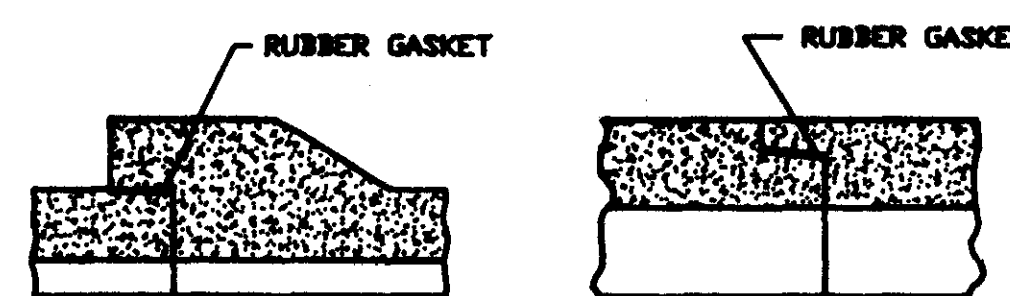
SECTION

PRECAST CONCRETE MANHOLE

N.T.S.

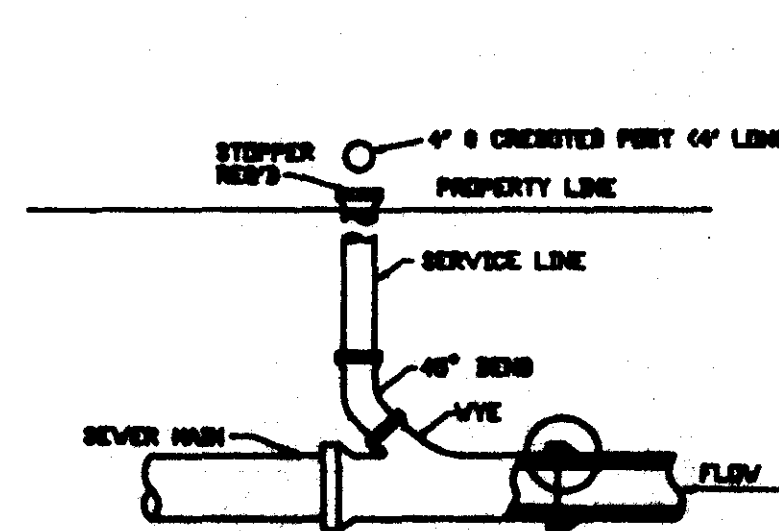
NOTE: ALL LIFT HOLES ON EACH SECTION SHALL BE SEALED WATERTIGHT WITH NON-SHRINK GROUT INSIDE AND OUTSIDE

NOTE: ALL MANHOLE JOINTS TO BE RUBBER GASKET

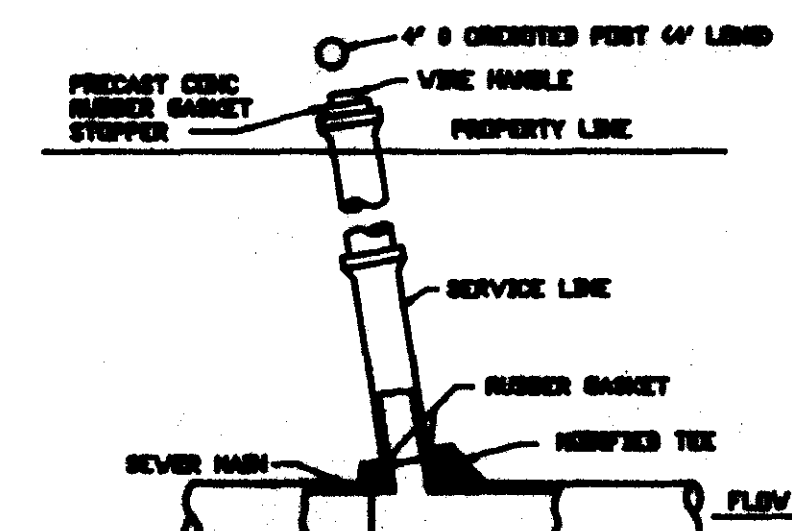


BELL & SPIGOT TONGUE & GROOVE

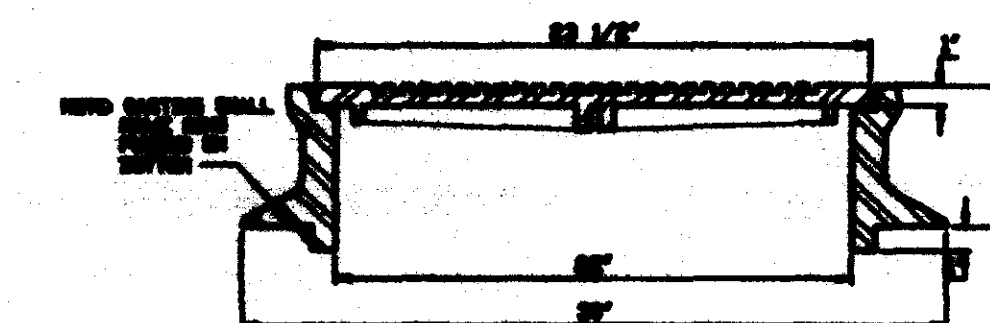
JOINT DETAILS



TYPICAL SERVICE TO PROPERTY LINE WITH WYE JOINT



TYPICAL SERVICE TO PROPERTY LINE WITH MODIFIED TEE JOINT



SECTION TYPE 'C' MANHOLE CASTING

NOTE: 1. USE TYPE 'C' MANHOLE CASTING FOR PRECAST MANHOLE NOT IN STREET ROW.
2. USE TYPICAL NO. 1 GRADE, STANDARD LIGHT WEIGHT CONCRETE OR VULCAN NO. 14-25 CITY OF JACKSON STANDARD (ASB No. 2)

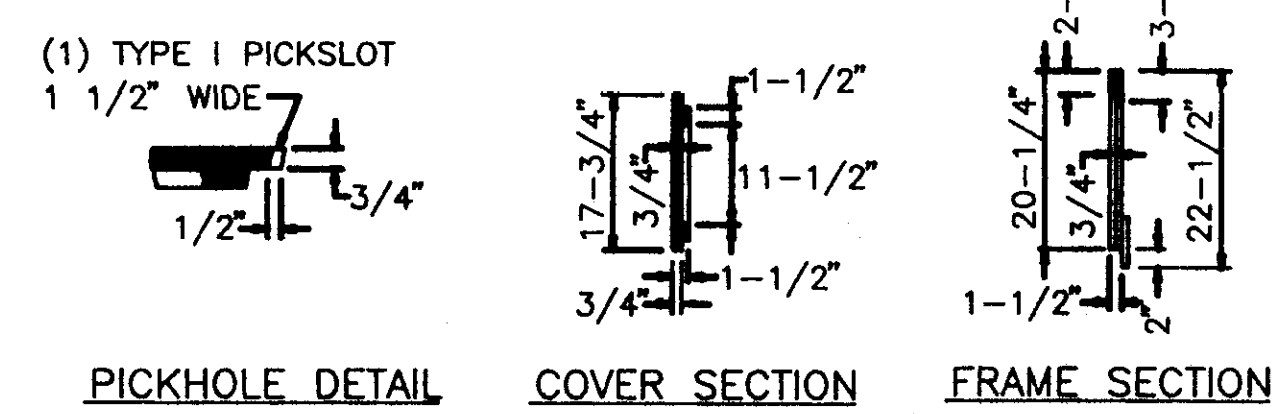
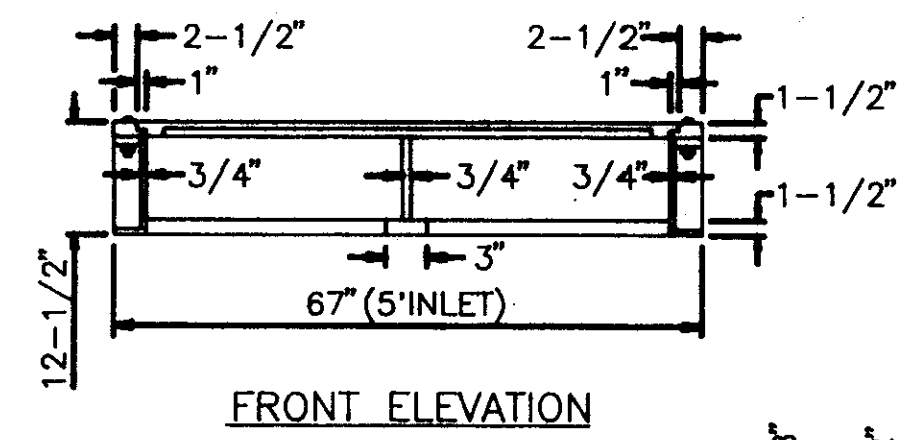
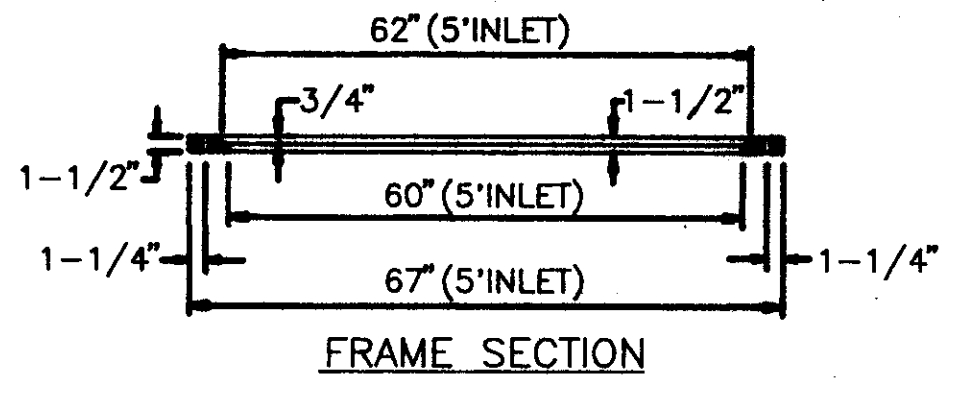
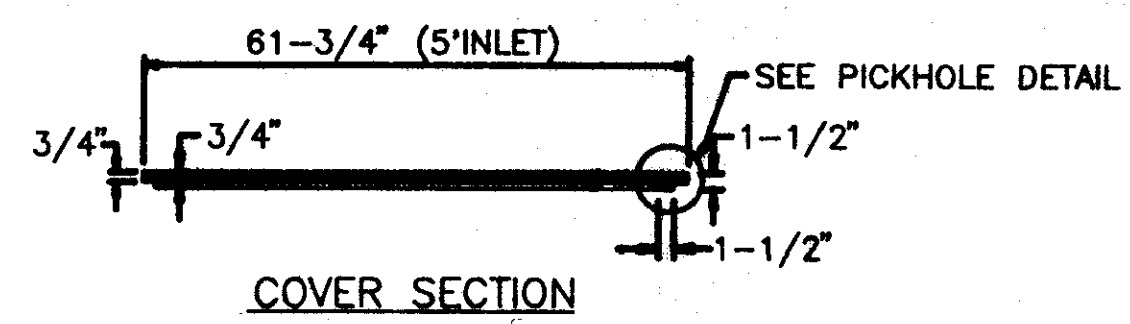
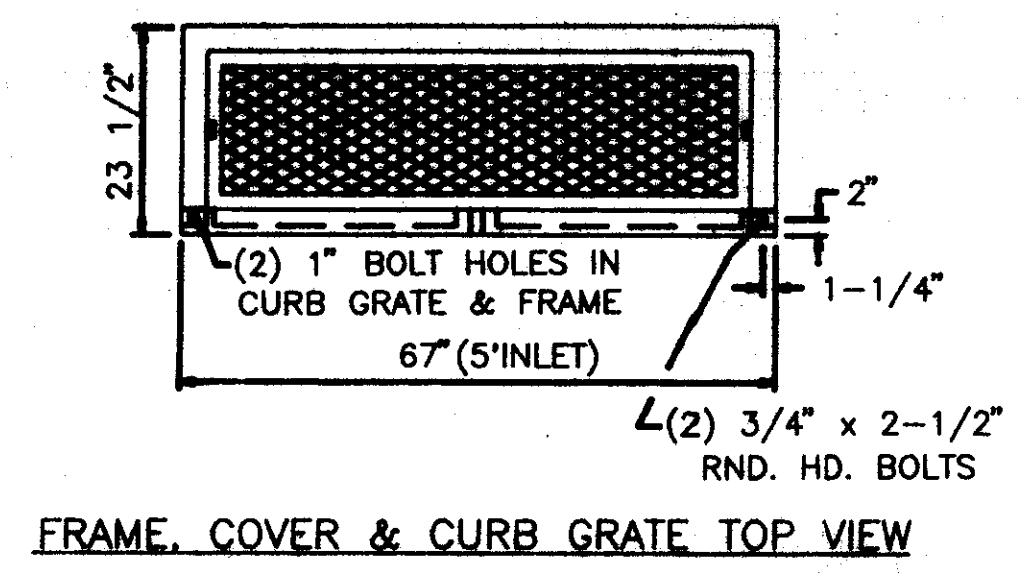
DESIGNED BY	DATE
DRAWN BY	APPROVED BY
REVIEWED BY	SCALE
BY	DATE

DESIGNED BY	DATE
DRAWN BY	APPROVED BY
REVIEWED BY	SCALE
BY	DATE

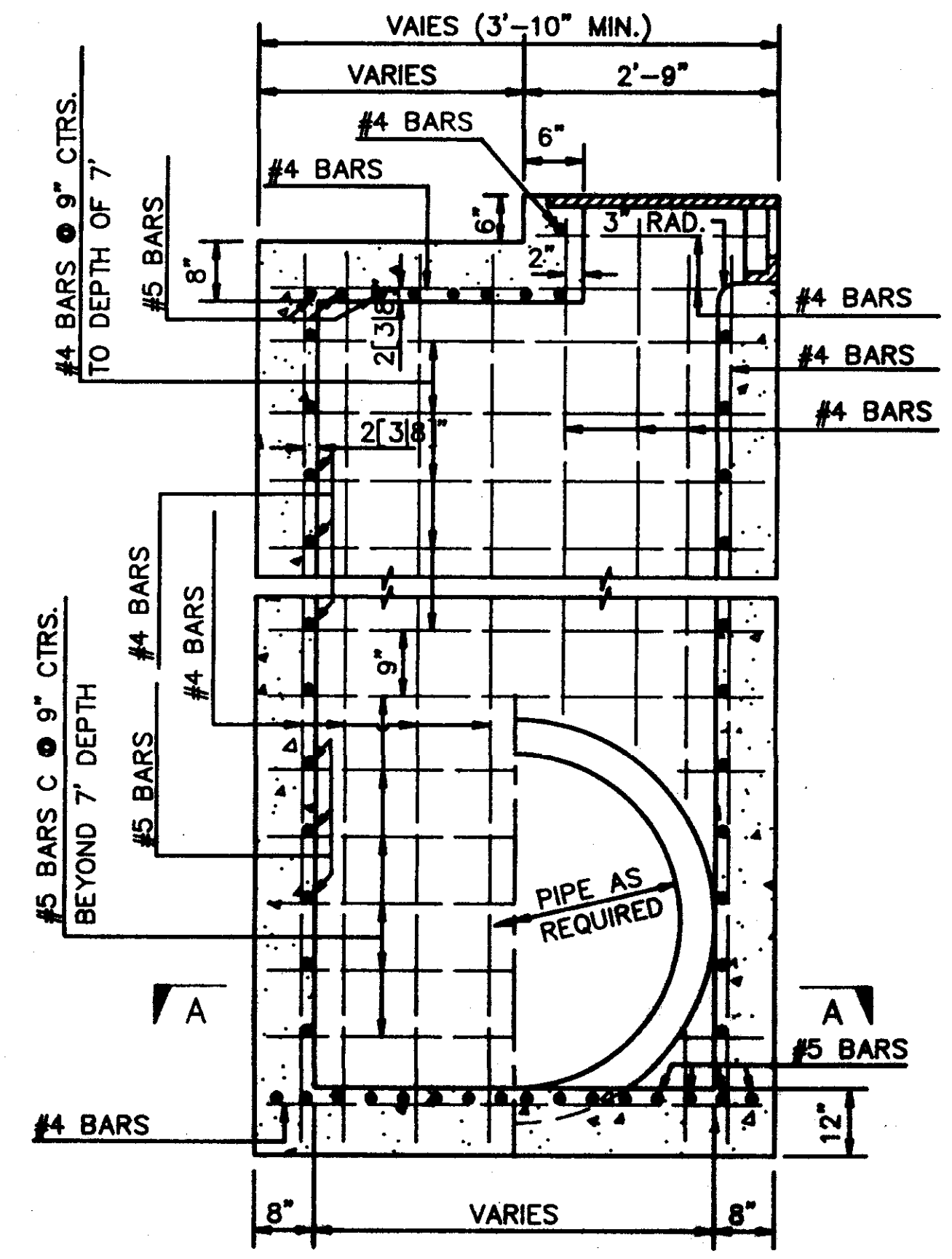
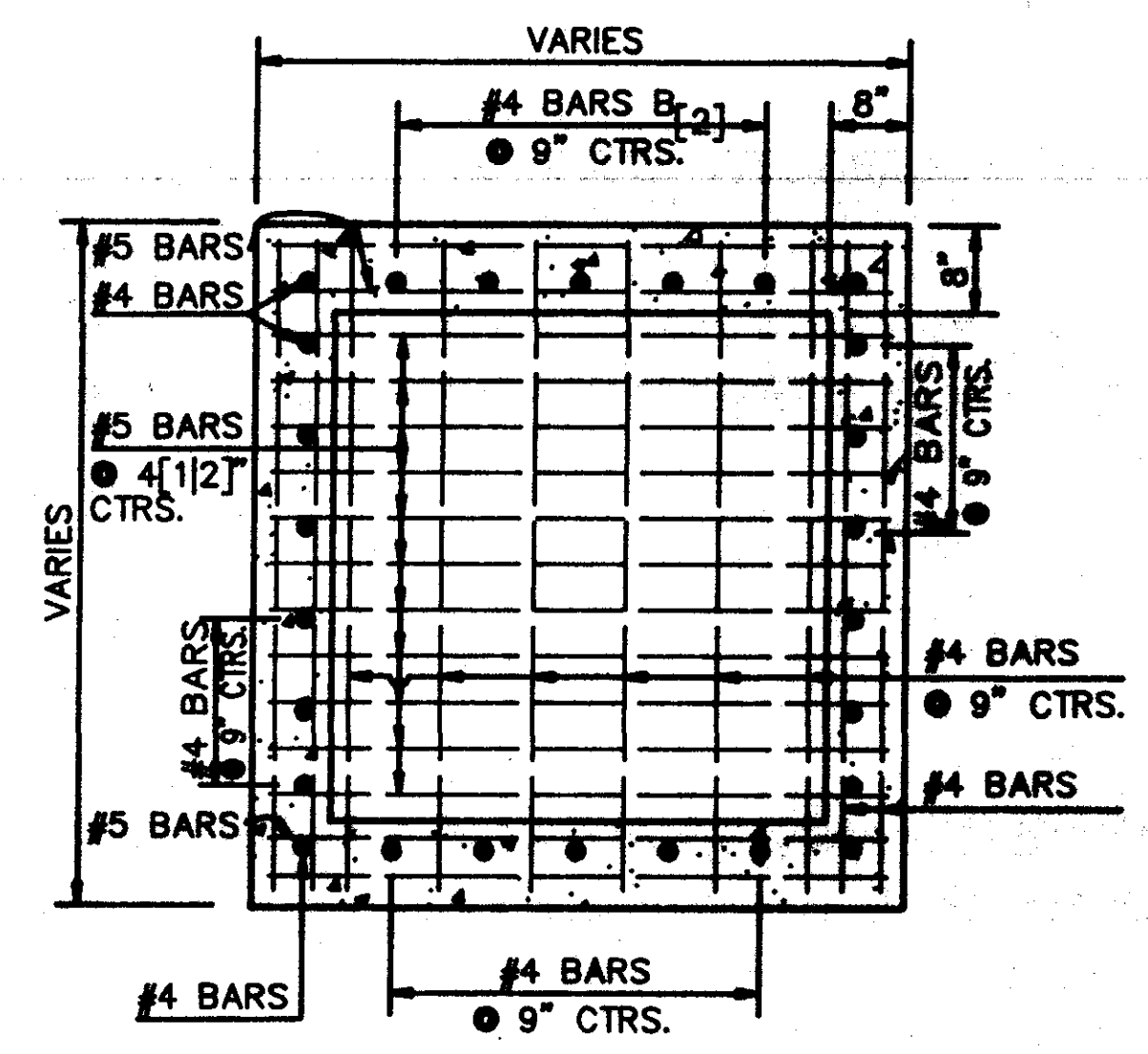
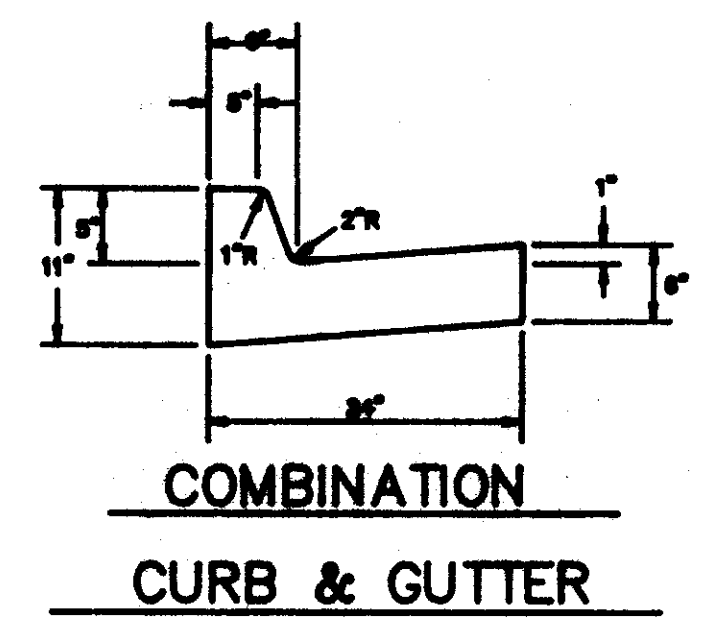
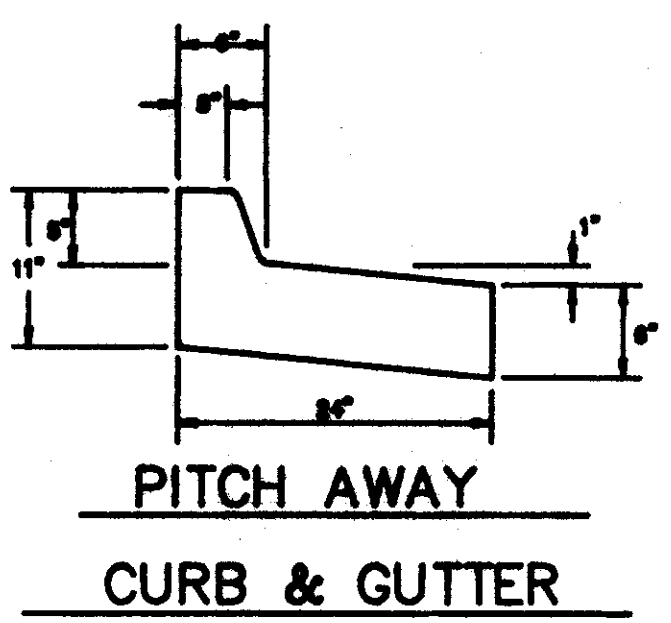
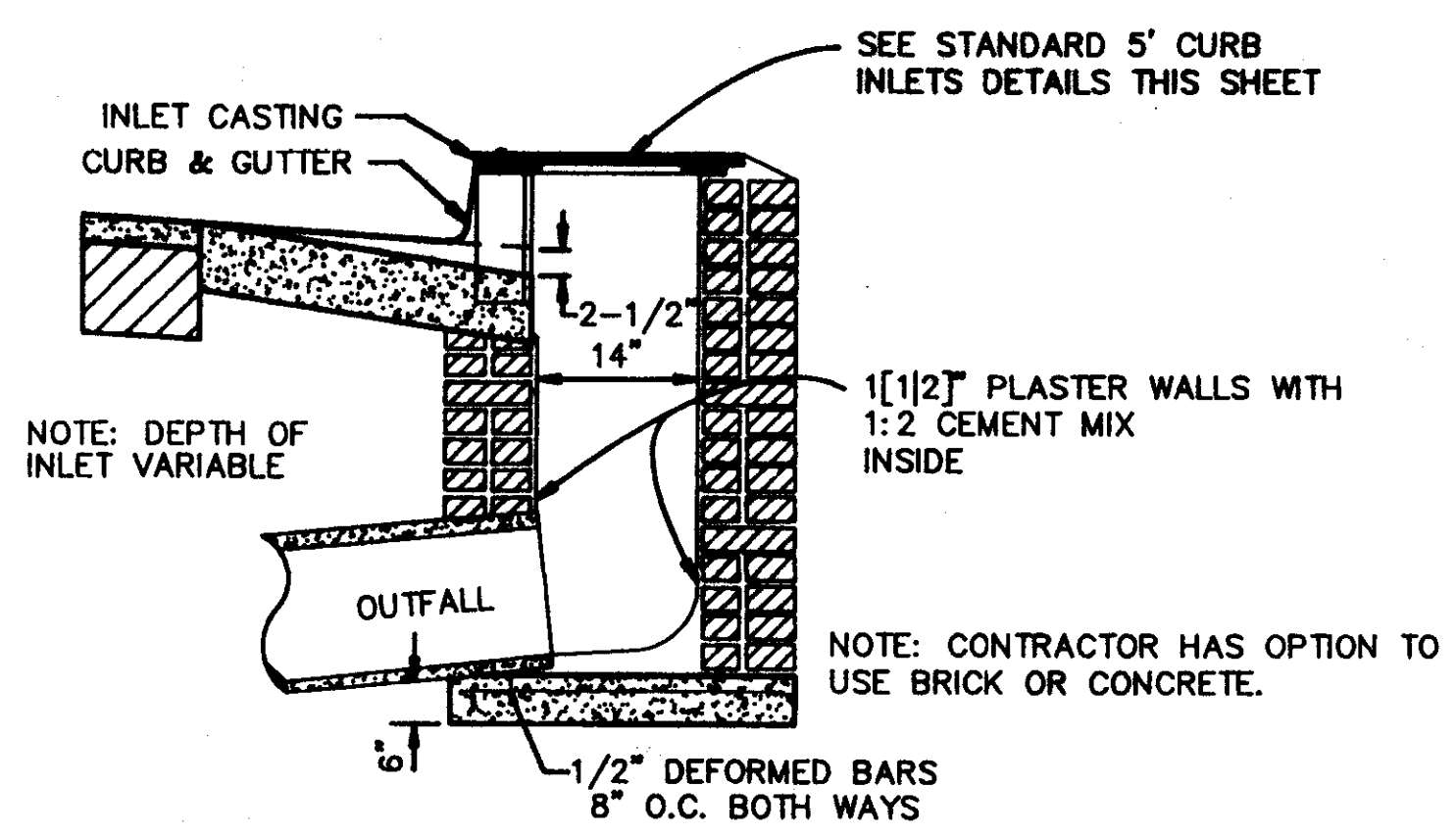
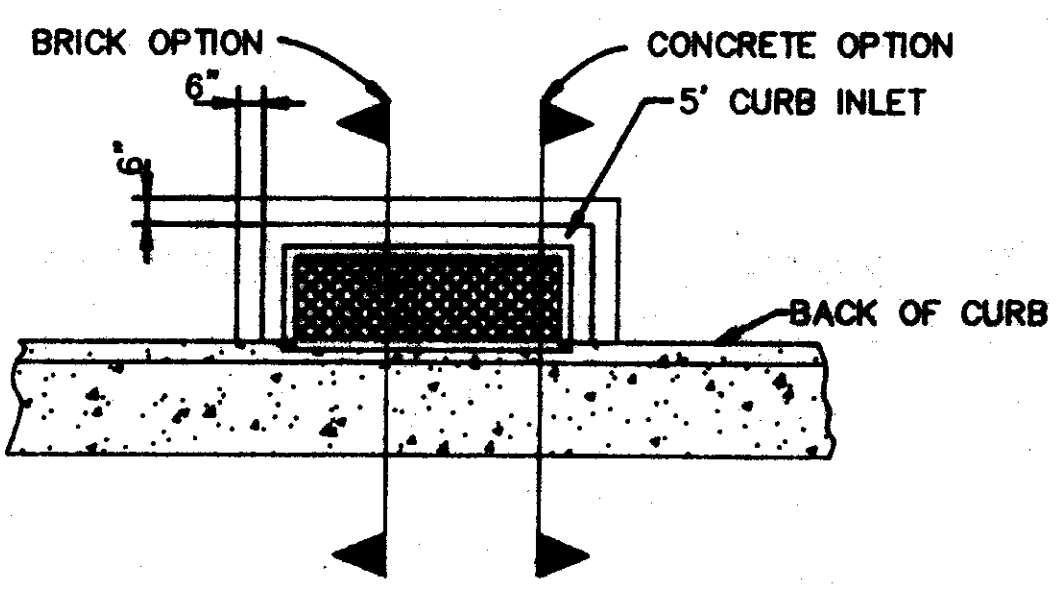
WILLIFORD, GEARHART & KNIGHT, INC.
ENGINEERS & SURVEYORS

MURWOODS SUBDIVISION - PHASE I
HIGHLAND, MISSISSIPPI
SEWER DETAILS

DATE	NO.
VGK - 87-100	OF



STANDARD 5' CURB INLET DETAILS
N.T.S.



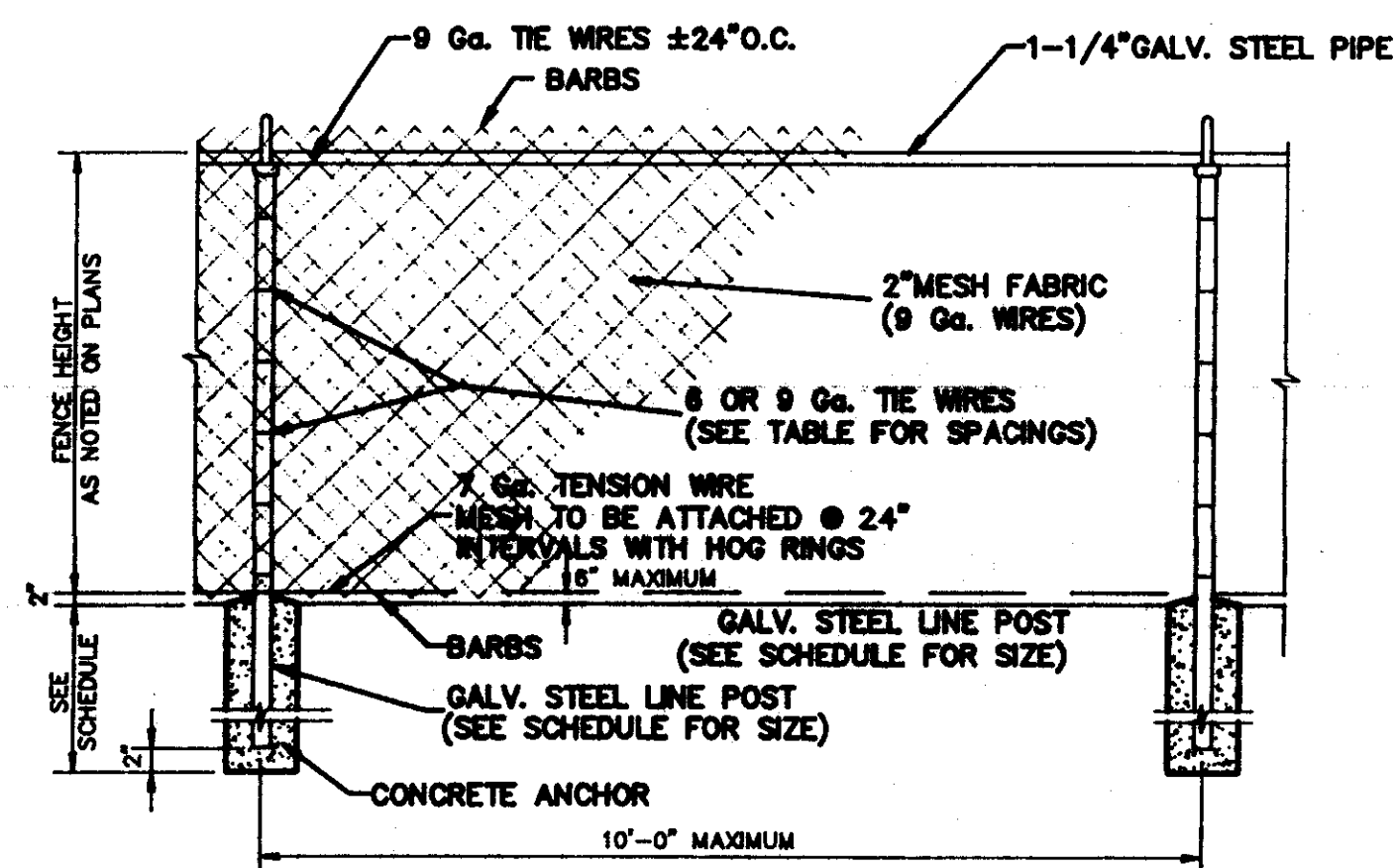
NO.	DATE	REVISIONS	BY

DESIGNED BY BRL	DATE 08/08/07
DRAWN BY BRL	APPROVED BY GHW
REVIEWED BY GHW	SCALE N.T.S.

WILLIFORD, GEARHART & KNIGHT, INC.
ENGINEERS & SURVEYORS

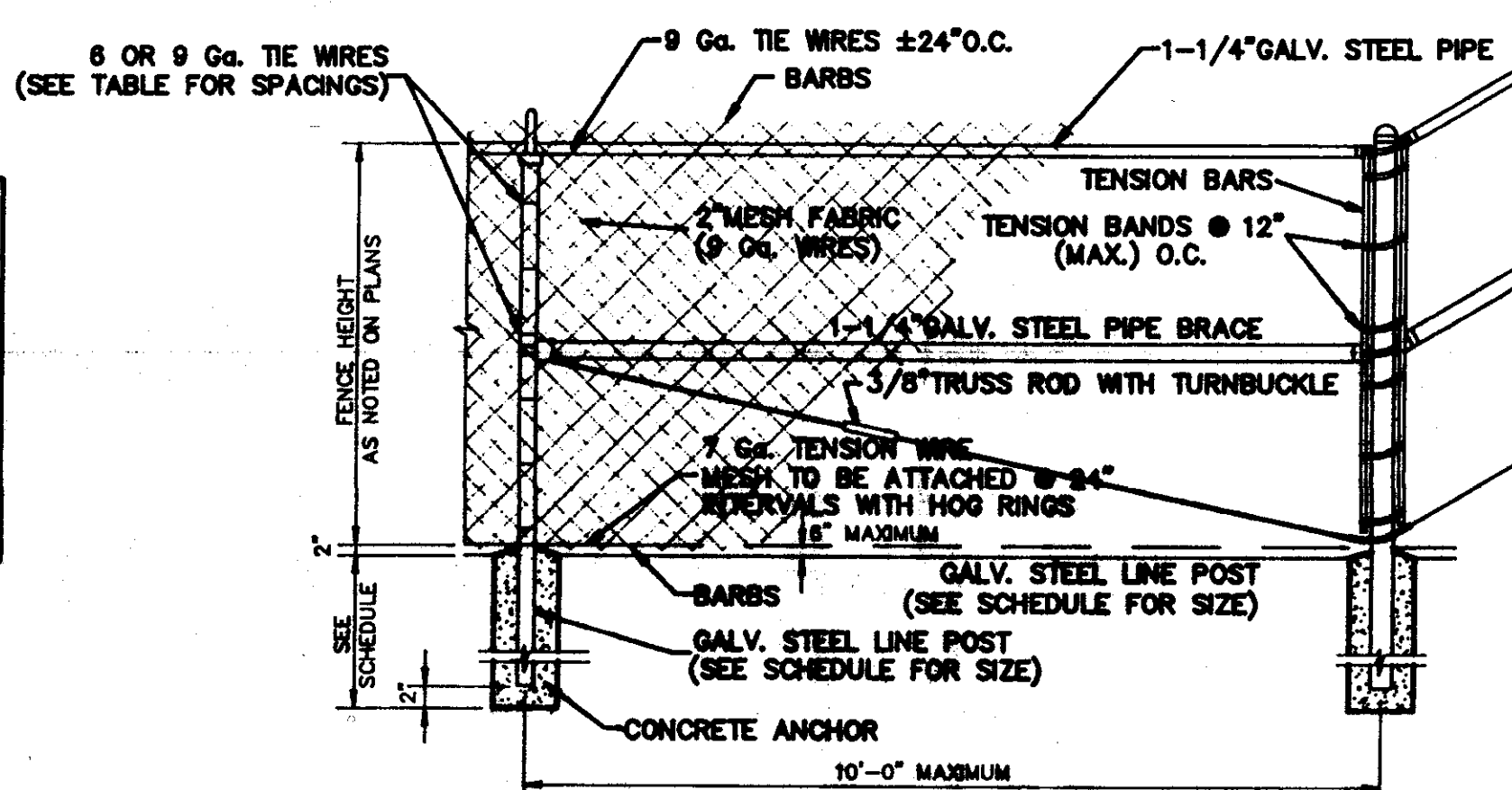
MURWOODS SUBDIVISION - PHASE I
RIDGELAND, MISSISSIPPI
STORM SEWER DRAINAGE DETAILS

WCKJ - 847-00
SHEET NO. 7
OF 8



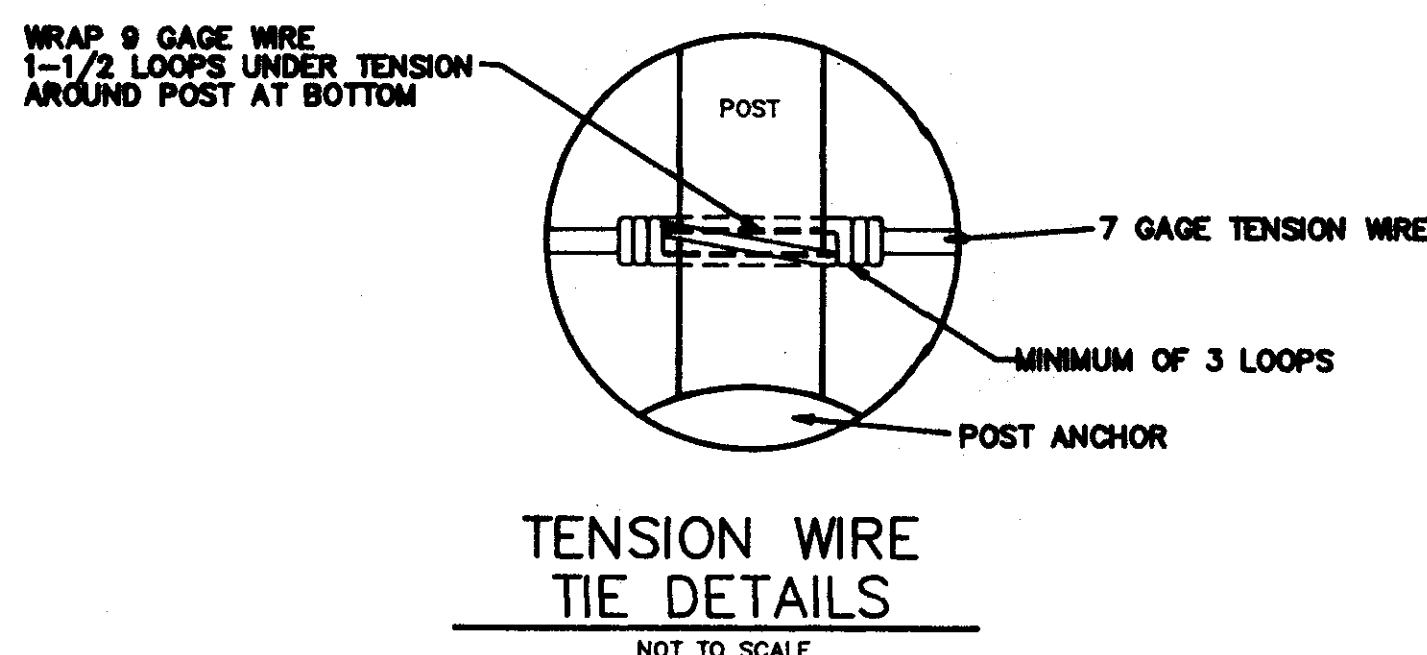
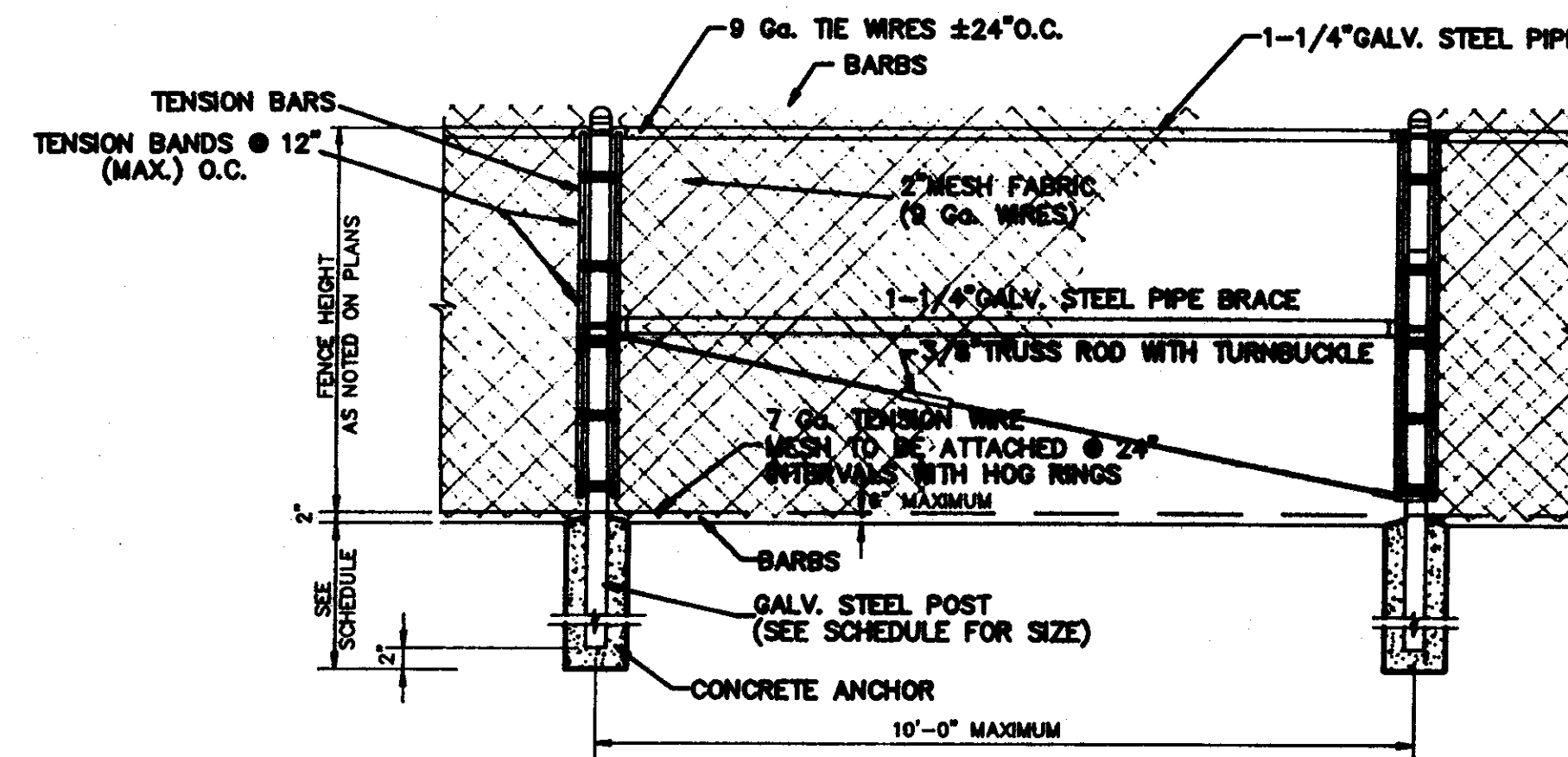
LINE BAY

SCALE: 1/2" = 1'-0"



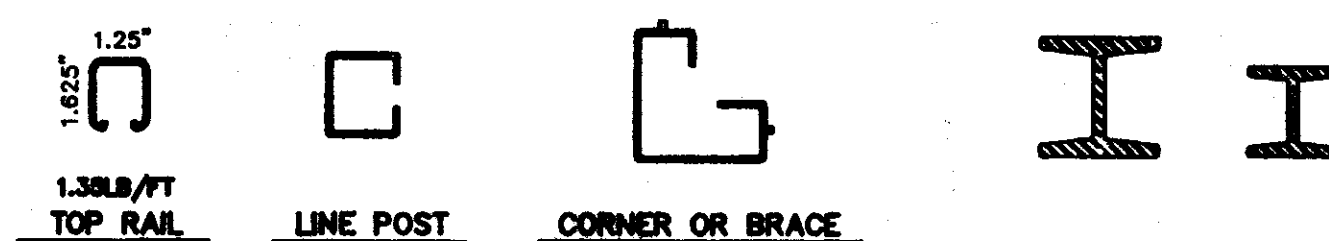
CORNER BAY

SCALE: 1/2" = 1'-0"

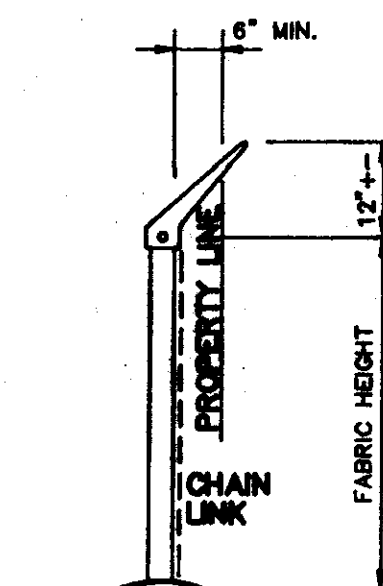


TENSION WIRE TIE DETAILS

NOT TO SCALE

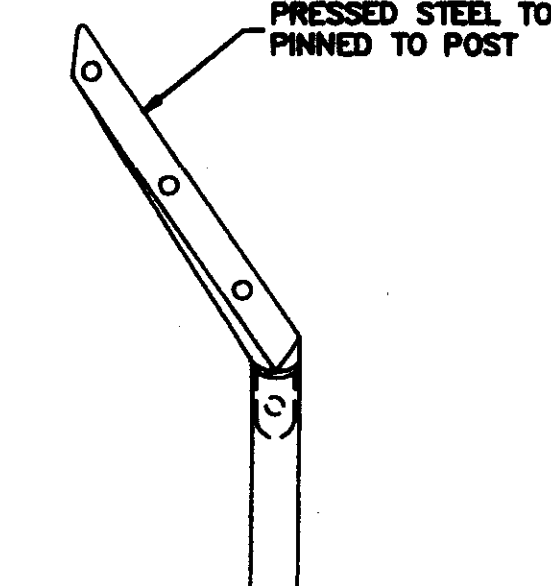


ALTERNATE TYPES TOP RAIL, LINE, CORNER OR BRACE POST (SIZE AND WEIGHT AS SHOWN ON SCHEDULE) NOT TO SCALE



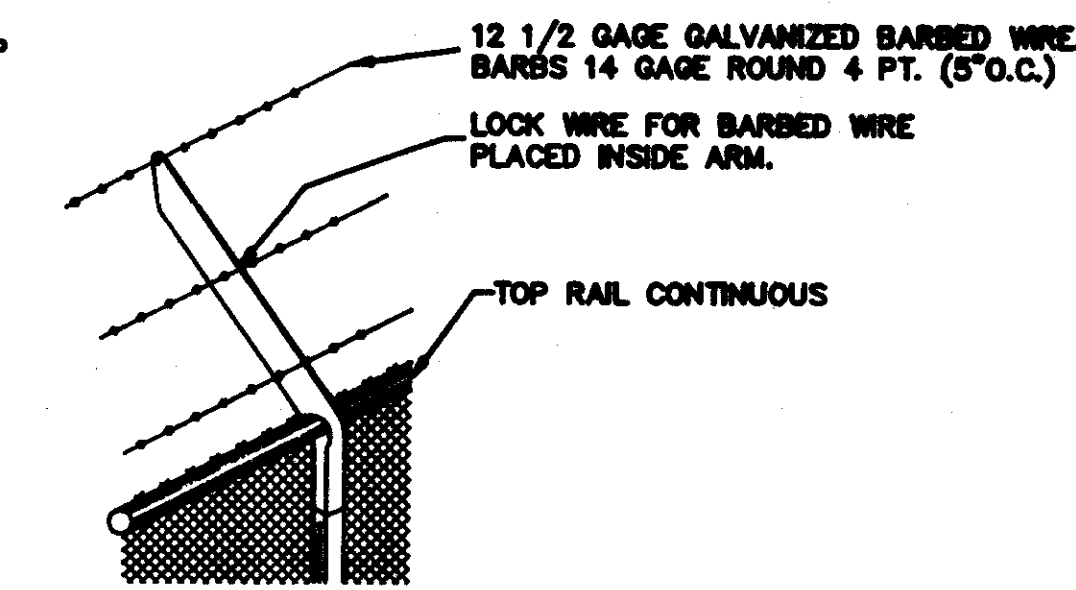
END ELEVATION

NOT TO SCALE



END & CORNER POST TOP

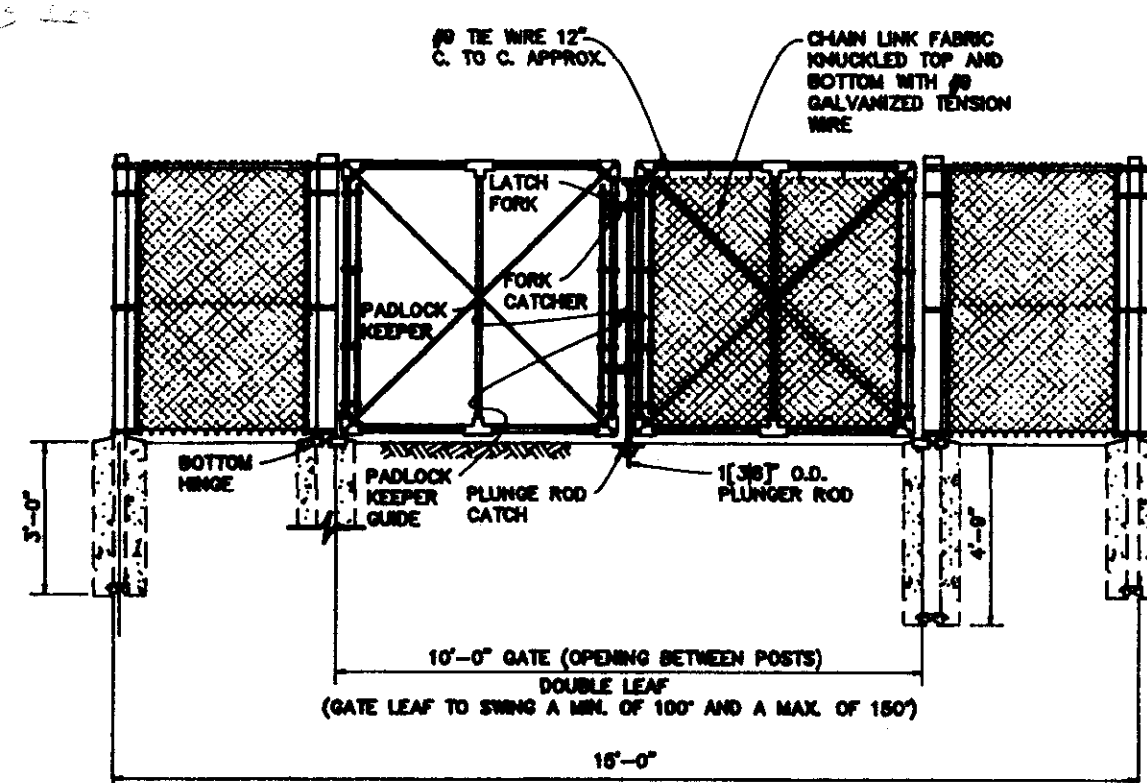
NOT TO SCALE



LINE POST TOP

(VERTICAL ARMS WHEN REQ'D.) NOT TO SCALE

NOTE: ARMS WITH BARBED WIRE TO BE USED WHERE SHOWN ON PLANS.



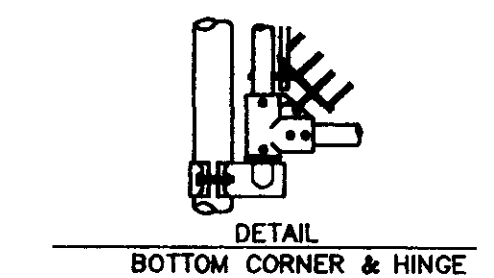
GATE POST

SEE SWING GATE POST DATA

SWING GATE POST DATA			
STD. PIPE SIZE	# / FT.	OPENING SINGLE LEAF	OPENING DOUBLE LEAF
2-1/2" O.D.	5.1	6' OR LESS	12' OR LESS
4" O.D.	8.1	8' TO 12'	12' TO 24'
6" O.D.	12.9	12' TO 18'	24' TO 36'
8" O.D.	24.7	18' TO 23'	36' TO 48'
10" O.D.	31.2	23' TO 30'	48' TO 60'

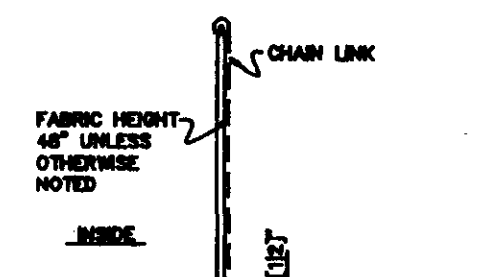
WIRE FABRIC FENCING NOTES:

- ALL METAL SHALL BE HOT DIPPED GALVANIZED.
- FENCES & GATES SHALL BE FURNISHED COMPLETE WITH ALL NECESSARY FITTINGS.
- FOR GATES - SIZES OF PIPES, SAG RODS, & TURNBUCKLES SHALL BE MANUFACTURER'S STANDARD WHICH ALSO MEET THE REQUIREMENTS OF THIS DRAWING.
- FENCE IS TO BE LOCATED SO THAT INTRUDER GUARD DOES NOT OVERHANG PROPERTY LINE.
- POSTS SHALL BE ROLLED OR EXTRUDED SECTIONS OR TUBING OF STEEL OR ALUMINUM CAPABLE OF WITHSTANDING A LATERAL FORCE OF 100 POUNDS APPLIED AT THE TOP. ALL HOLLOW POSTS SHALL BE CAPPED.
- ALL CONCRETE SHALL BE 3000 POUNDS WITH 3" SLUMP AND [4] MAX. SIZE AGGREGATE.
- FENCE GROUNDINGS SHALL BE ACCOMPLISHED BY USING A [3/4]" O.D. GROUND ROD INSTALLED TO MEET THE FOLLOWING CRITERIA: (a) TOP OF GROUND ROD A MIN. OF 12" BELOW GRADE (b) AT LEAST ONE EVERY 150' LINEAR FEET OF FENCE (c) AT LEAST ONE AT EACH CORNER PORT (d) AT LEAST ONE ON BOTH SIDES OF A GATE.
- STANDARD PIPE SIZES INDICATED ARE NOMINAL O.D., SCHEDULE 40, PER AMERICAN STANDARD'S ASSOC. (ASA) B36.10.
- ALL CONSTRUCTION FENCING, SIGNS, BARRIERS AND GATES SHALL BE REMOVED WHEN CONSTRUCTION IS COMPLETED.



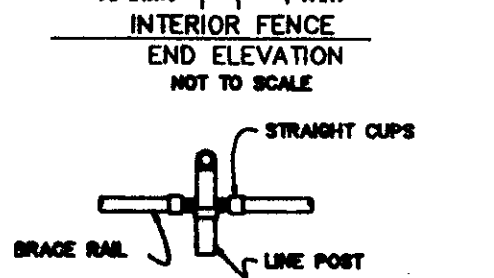
DETAIL BOTTOM CORNER & HINGE

NOT TO SCALE



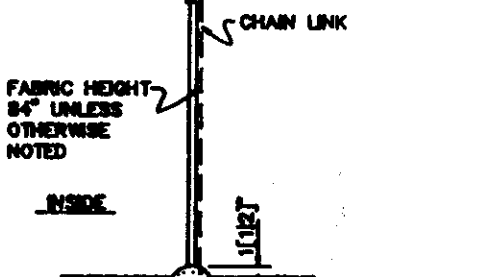
DETAIL INTERIOR FENCE

NOT TO SCALE



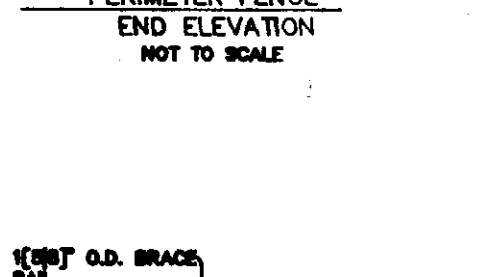
DETAIL STRAIGHT CLIPS

NOT TO SCALE



DETAIL PERIMETER FENCE

NOT TO SCALE



DETAIL BRACE RAIL

NOT TO SCALE

FENCE HEIGHT	POST HEIGHT	POST SCHEDULE								
		MINIMUM POST SIZE				MIN. ANCHOR SIZE				
		PIPE SIZE	PIPE WEIGHT	BEAM SIZE	BEAM WEIGHT	CHANNEL SIZE	CHANNEL WEIGHT	HOLE DIA.	HOLE DEPTH	POST DEPTH
LESS THAN 6'	LINE	1 1/2"	2.72 LBS/LF	1.875 x 1.625	2.70 x 1.625	1.875 x 1.625	2.34 x 1.625	7"	28"	22"
		2"	3.65 LBS/LF	2.25 x 1.95	4.10 x 1.95	3.50 x 1.95	5.14 x 1.95	10"	32"	28"
LESS THAN 6'	END, CORNER & BRACE	2"	3.65 LBS/LF	2.25 x 1.95	4.10 x 1.70	2.25 x 1.70	2.73 x 1.70	8"	38"	34"
		2 1/2"	5.79 LBS/LF	3.00 x 2.375	5.70 x 2.375	3.50 x 2.375	5.14 x 2.375	12"	44"	40"
6' THR 12'	LINE	2"	3.65 LBS/LF	2.25 x 1.95	4.10 x 1.70	2.25 x 1.70	2.73 x 1.70	8"	38"	34"
6' THR 12'	END, CORNER & BRACE	2 1/2"	5.79 LBS/LF	3.00 x 2.375	5.70 x 2.375	3.50 x 2.375	5.14 x 2.375	12"	44"	40"

GENERAL NOTES:
STEEL POST, STEEL BRACES AND STEEL PIPE SIZES SHOWN ARE NOMINAL, INSIDE DIAMETER. WEIGHT PER FOOT AND OTHER DIMENSIONS ARE AS SPECIFIED FOR STANDARD WEIGHT PIPE IN THE CURRENT ASTM DESIGNATION: A120 (SCHEDULE 40).

3/8" TRUSS ROD NOT REQUIRED WHEN CONNECTING LESS THAN 4 PANEL LENGTHS TO STRUCTURES.

NO.	DATE	REVISIONS	BY

DESIGNED BY	DATE
CLB	8/20/07
DRAWN BY	APPROVED BY
CLB	CRW
REVIEWED BY	SCALE
CRW	N.T.S.

WILLIFORD, GEARHART & KNIGHT, INC.
ENGINEERS & SURVEYORS

MURWOOD SUBDIVISION - PHASE I
RIDGELAND, MISSISSIPPI
FENCE DETAIL

WKS - 07-100	SHEET NO.
3	OF 8