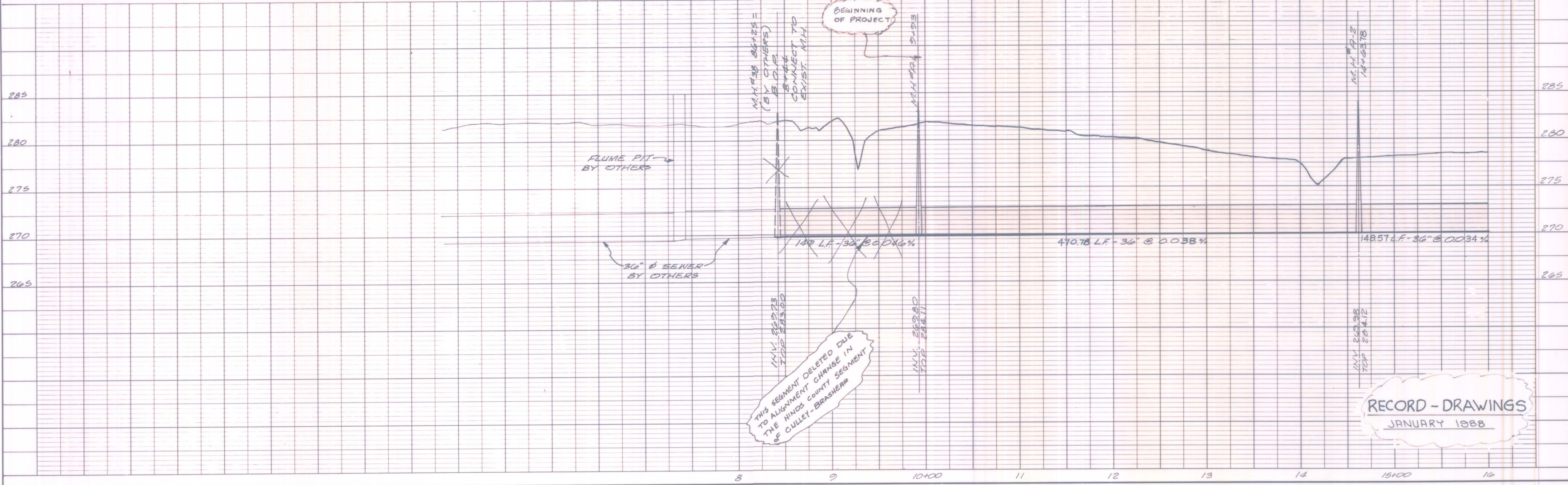


DATE: _____
 BY: _____
 SURVEYED: _____
 PLAN NOTE BOOK: _____
 ALIGNMENT CHECKED: _____
 RT. OF WAY CHECKED: _____
 No. _____



DATE: _____
 BY: _____
 SURVEYED: _____
 PROFILE NOTE BOOK: _____
 CHECKED: _____
 & M.A. NOTED: _____
 STRUCTURE NOTATIONS CHECKED: _____
 No. _____



THIS SEGMENT DELETED DUE TO ALIGNMENT CHANGE IN THE HINDS COUNTY SEWER & CULLET BRASHERS

RECORD - DRAWINGS
 JANUARY 1988

JOE A. WAGGONER
 Civil Engineer - Brandon / Jackson, Miss.

EAST MADISON COUNTY SEWAGE DISPOSAL SYSTEM
 SEGMENT I - MADISON COUNTY PORTION
 EPA PROJECT NO. C 280392-020

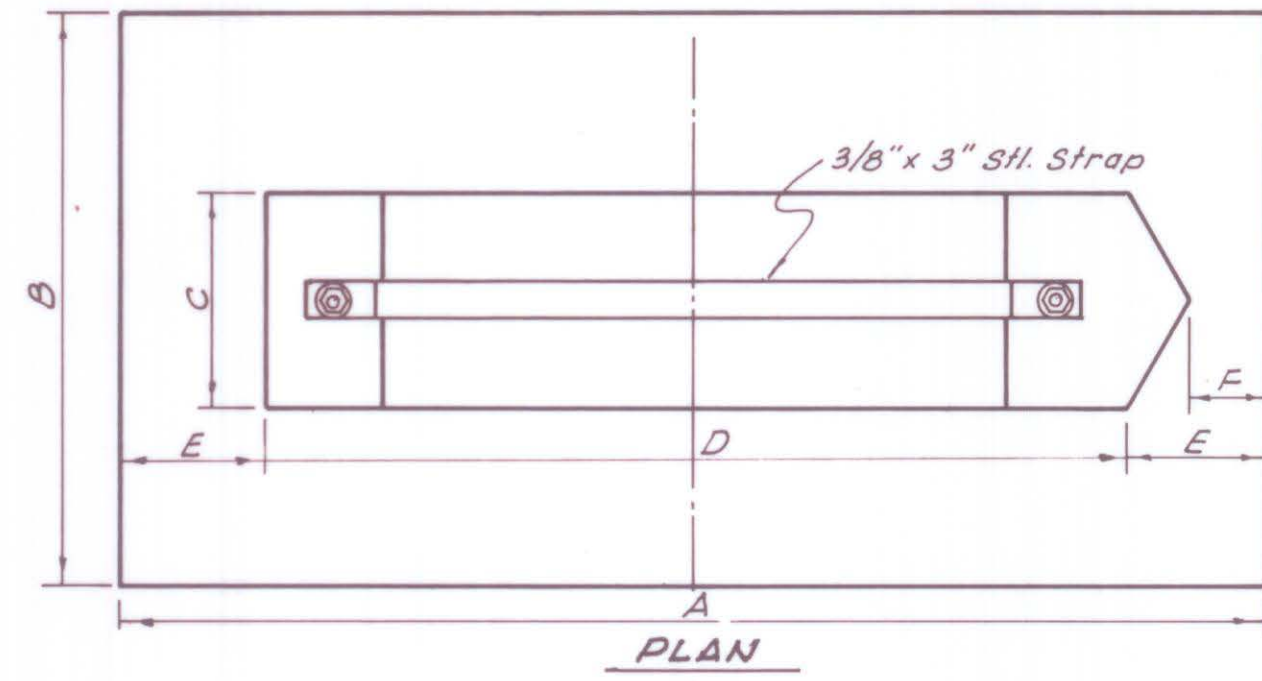
SHEET NO.
 2 A OF 34

DATE	
BY	
REVISIONS	
NO.	
PLAN	
NOTE BOOK	
NO.	

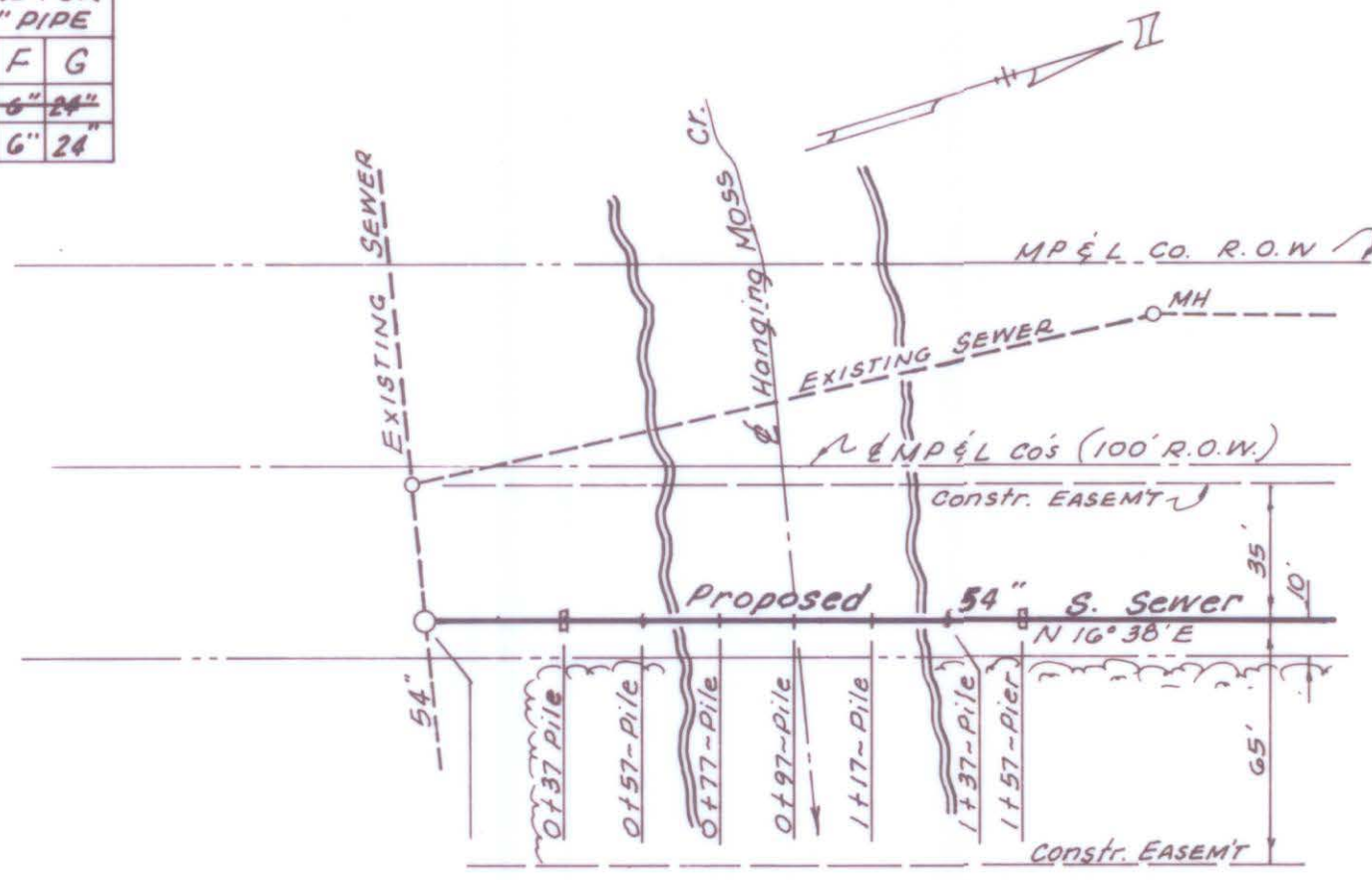
DATE	
BY	
REVISIONS	
NO.	
PROFILE	
NOTE BOOK	
NO.	

SCHEDULE OF DIMENSIONS FOR TYPE "B" CONC PIERS FOR 54" PIPE

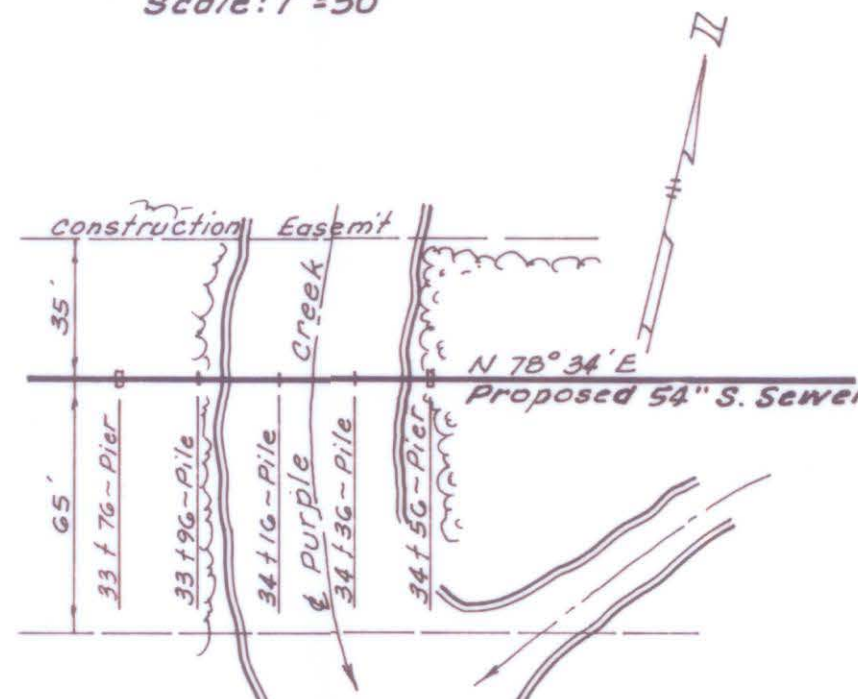
PIPE MAT'L	A	B	C	D	E	F	G
CP	9'-6"	4'-0"	1'-6"	7'-6"	1'-0"	6"	24"



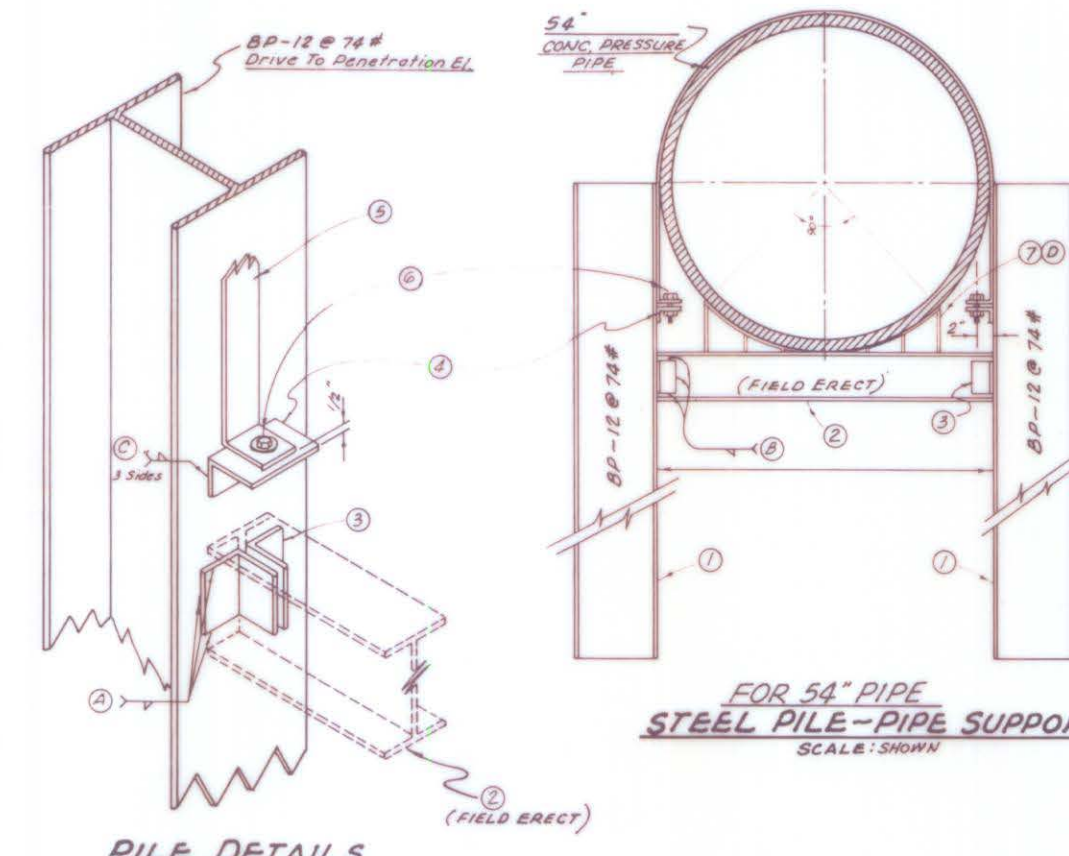
UPSTREAM



PLAN-HANGING MOSS CREEK
SEE SHEET #1
Scale: 1"=50'



PLAN-PURPLE CREEK
SEE SHEET #3
Scale: 1"=50'



PILE DETAILS
SCALE: SHOWN

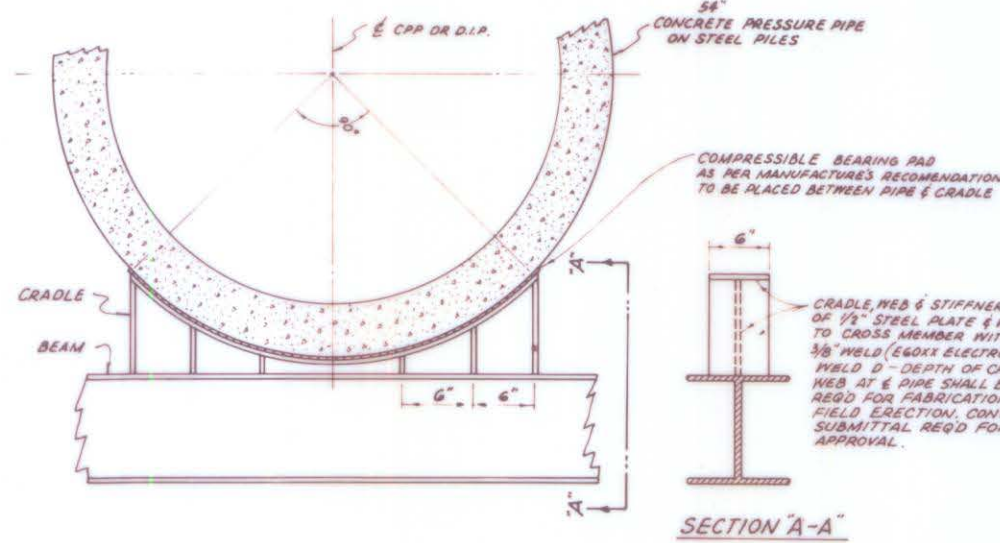
MEMBER SCHEDULE

MEMBER DESIGNATION	NO. OF MEMBERS PER BAY	DUCTILE IRON PIPE	CONCRETE PRESSURE PIPE
1	2	8" 12.80	8" 12.80
2	2	8" 12.80	8" 12.80
3	2	8" 12.80	8" 12.80
4	2	8" 12.80	8" 12.80
5	2	8" 12.80	8" 12.80
6	2	8" 12.80	8" 12.80
7	2	8" 12.80	8" 12.80

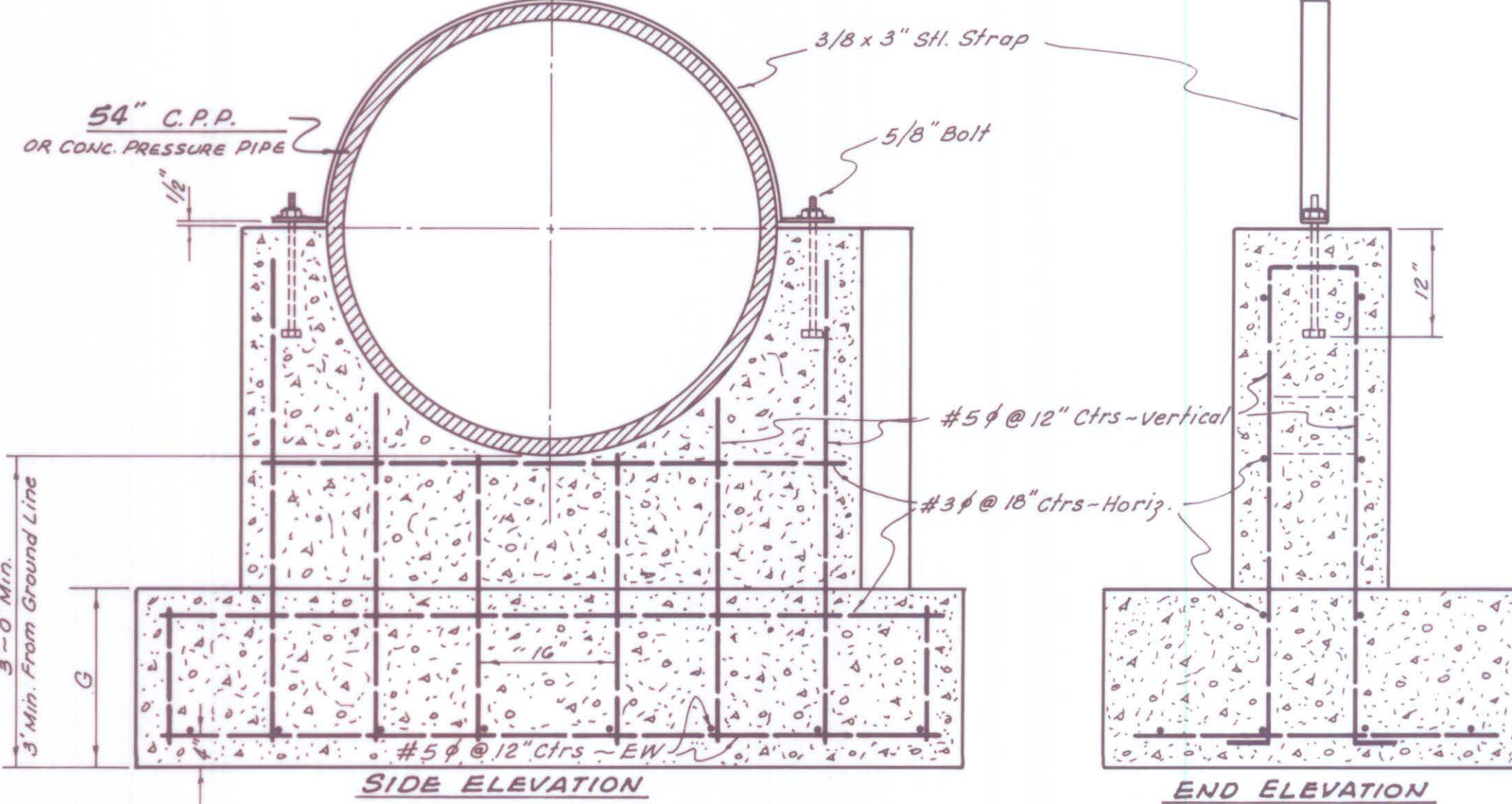
- NOTES:
- PIERS TO BE PLACED IN STEEL CRADLE. COMPRESSIBLE BEARINGS AND TO BE PLACED BETWEEN PIPE & CRADLE. PILES TO BE INSTALLED ON OTHER PILES RECOMMENDED BY PIPE MANUFACTURER.
 - LENGTH OF STEEL STRAP TO BE FIELD DETERMINED.
 - BOLT HOLES TO BE BOLT DIAMETER PLUS 1/16" INCH.

WELD SCHEDULE

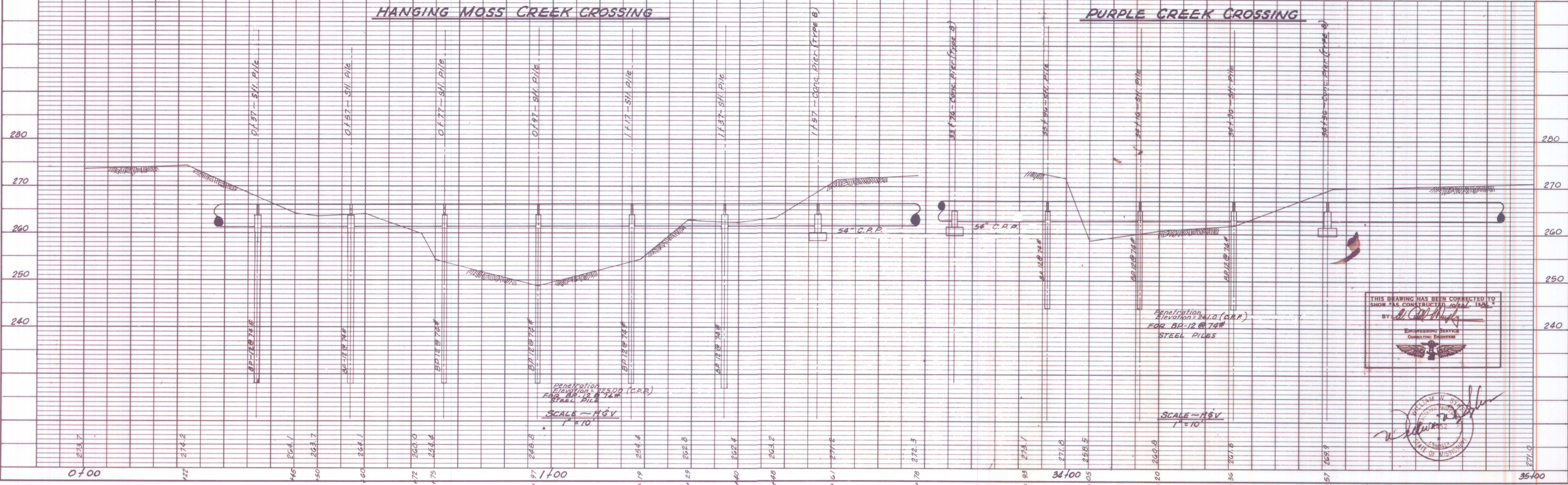
WELD DESIGNATION	FIELD	END	C.O. PIPE
A	1/4" E60XX	1/4" E60XX	1/4" E60XX
B	1/4" E60XX	1/4" E60XX	1/4" E60XX
C	1/4" E60XX	1/4" E60XX	1/4" E60XX
D	1/4" E60XX	1/4" E60XX	1/4" E60XX



TYPICAL CRADLE DETAIL FOR STEEL PILE SUPPORT
SCALE: NONE



TYPE "B" CONCRETE PIER-PIPE SUPPORT FOR 54" PIPE
SCALE: SHOWN



Penetration Elevation = 225.00 (C.P.P.)
Equip. Elev. = 218.74
SCALE - HGV
1"=10'

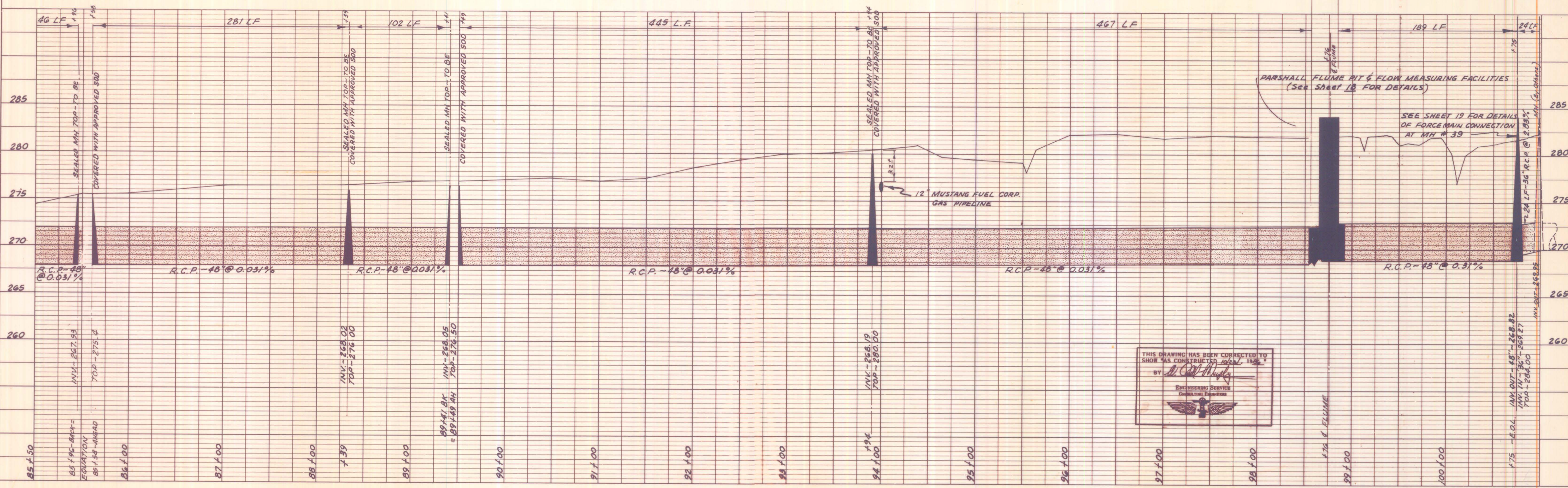
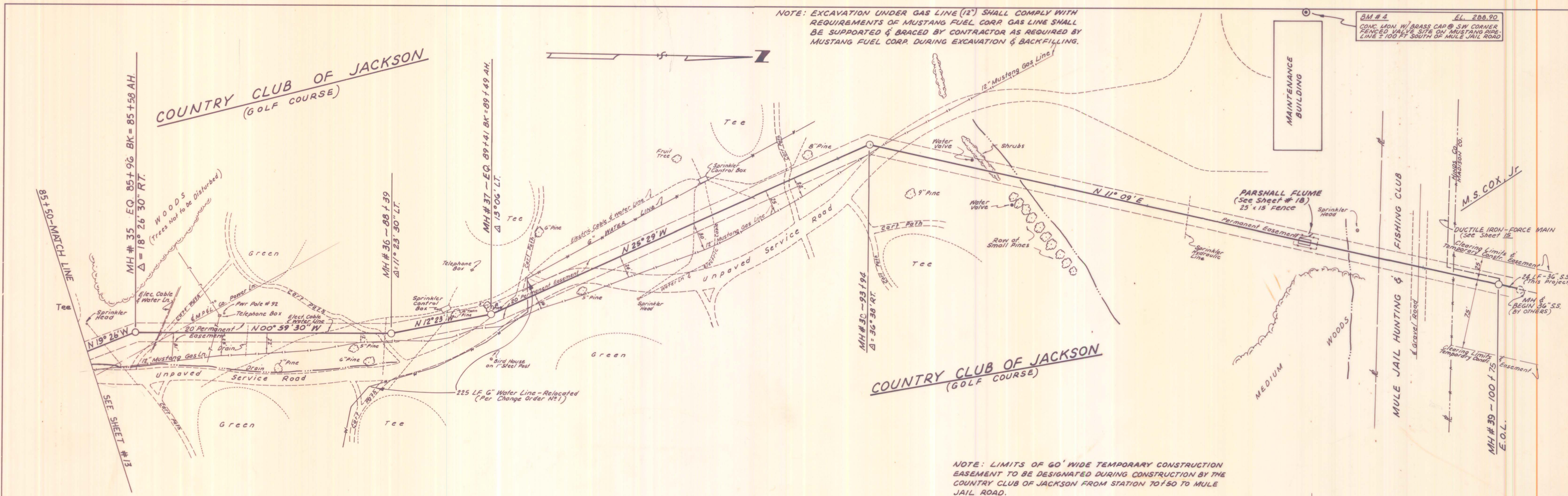
Penetration Elevation = 241.0 (C.P.P.)
FOR 8" 12.80 (C.P.P.)
STEEL PILES
SCALE - HGV
1"=10'

THIS DRAWING HAS BEEN CORRECTED TO SHOW THE CONSTRUCTION 10/24/83
BY: *[Signature]*
ENGINEERING SERVICES
CONSULTING ENGINEERS



PLAN	SURVEYED	DATE
	PLOTTED	BY
	ALIGNED	CHECKED
	NOTED	BY
	NO.	

PROFILE	SURVEYED	DATE
	PLOTTED	BY
	GRADES	CHECKED
	STRUCTURE	NOTATIONS
	NO.	



THIS DRAWING HAS BEEN CORRECTED TO SHOW AS CONSTRUCTED *1984*

BY *Bill Smith*

ENGINEERING SERVICES
CONSULTING ENGINEERS

