

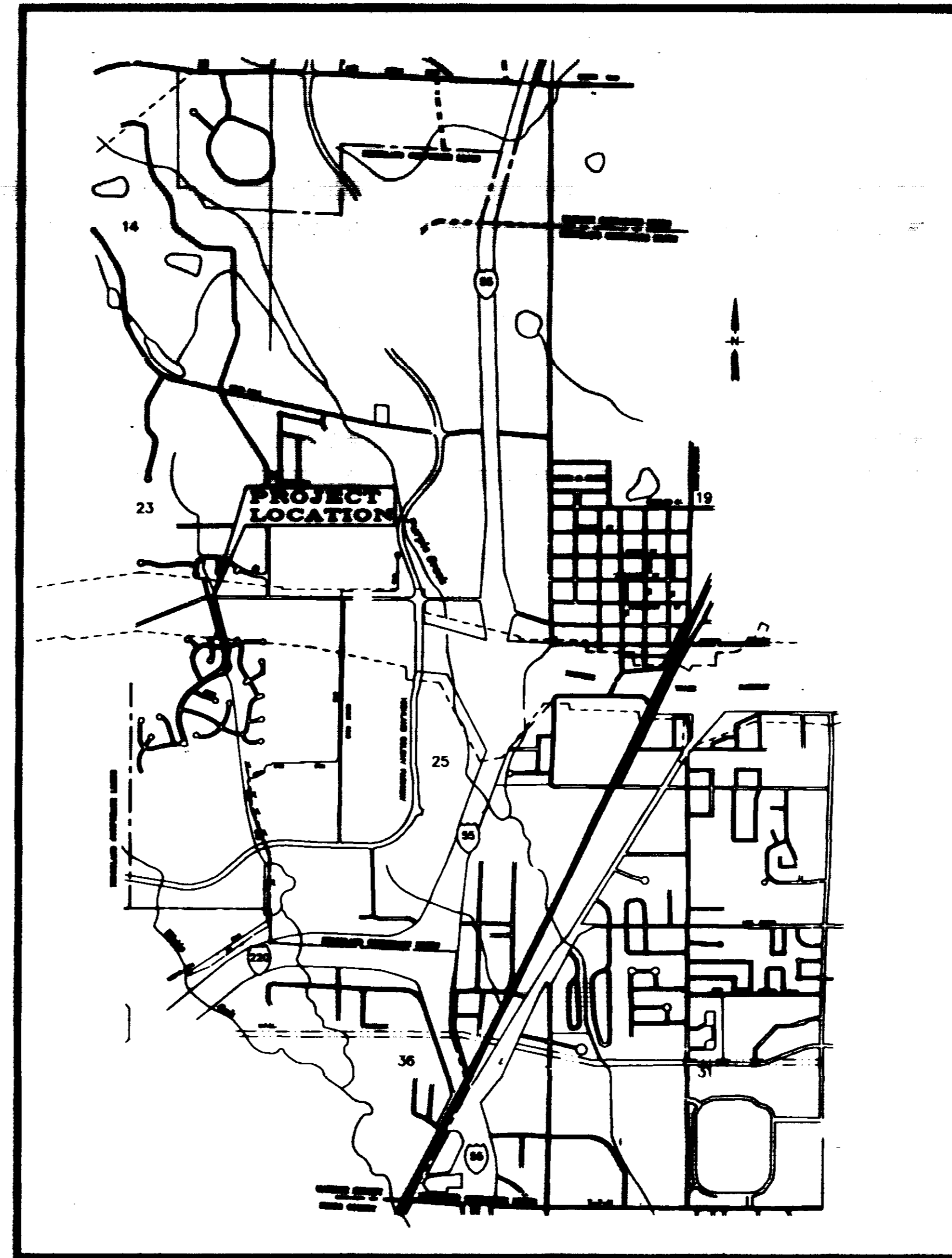
# CITY OF RIDGELAND, MISSISSIPPI NATCHEZ TRACE SANITARY SEWER CROSSING



Mayor:  
Gene F. McGee

Mayor Pro Tem:  
Chuck Kobert

City Attorney:  
Jerry Mills



**Aldermen:**

Brian Barcellona  
Joe Barlow  
Al Bible  
Harvey Carr, Jr.  
Linda Davis  
Chuck Kobert  
Daryl Smith

Public Works Director:  
Sam Vinson, P.E.

Asst. Public Works Director:  
Sid Hawthorne

City Clerk:  
Michael McPhearson

Fire Chief:  
Elmer Waits

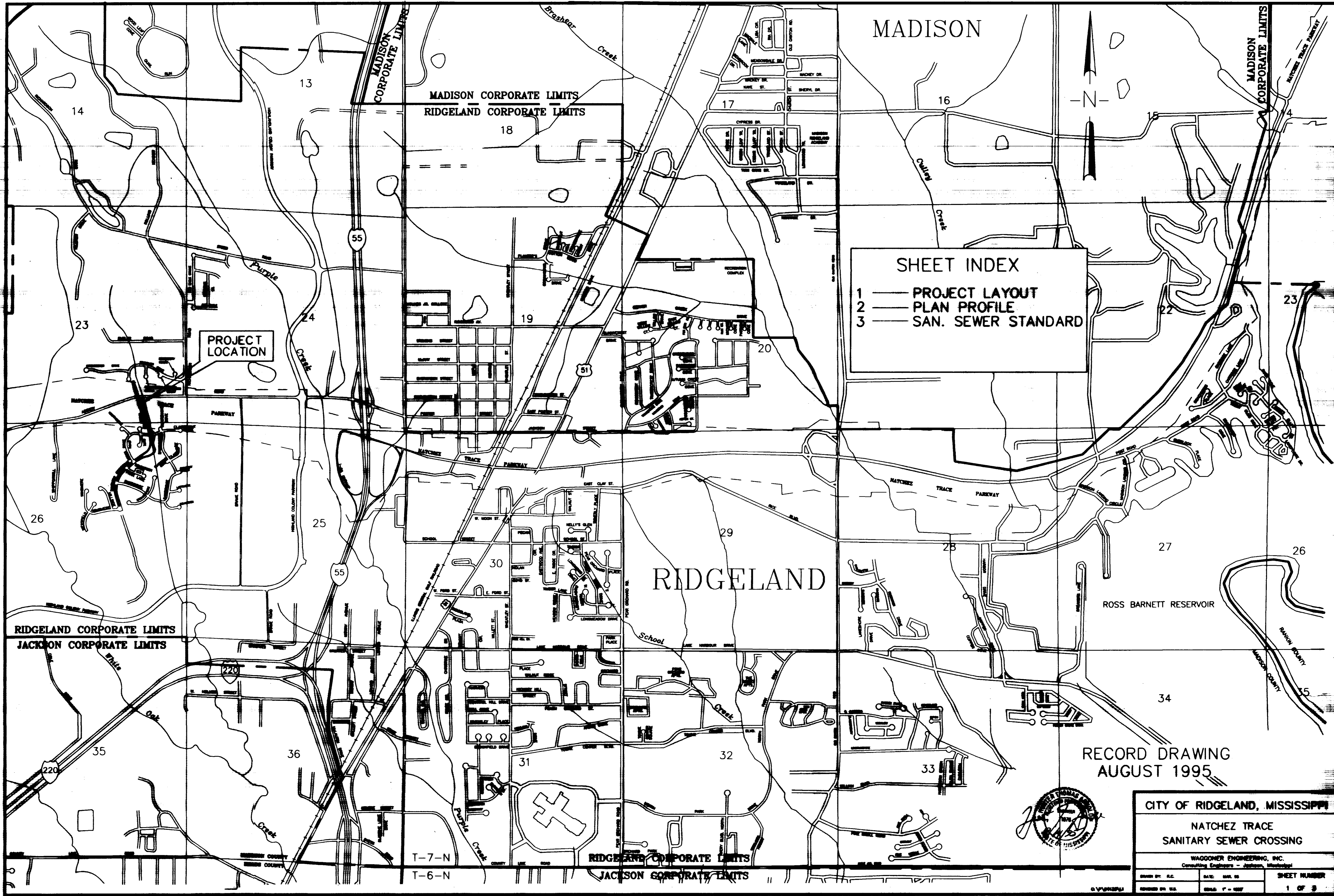
Police Chief:  
Charles Newell

MARCH 1995



WAGGONER ENGINEERING, INC.  
CONSULTING ENGINEERS  
Jackson / Pascagoula, Mississippi

RECORD DRAWING  
AUGUST 1995  
PWP 1404



**SHEET INDEX**

1 — PROJECT LAYOUT  
 2 — PLAN PROFILE  
 3 — SAN. SEWER STANDARD

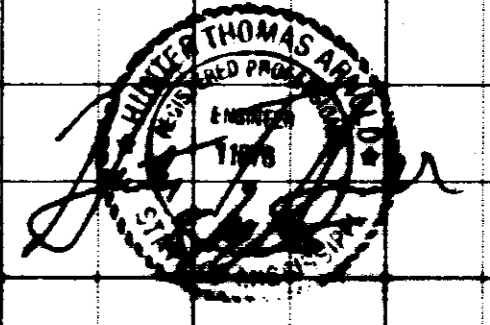
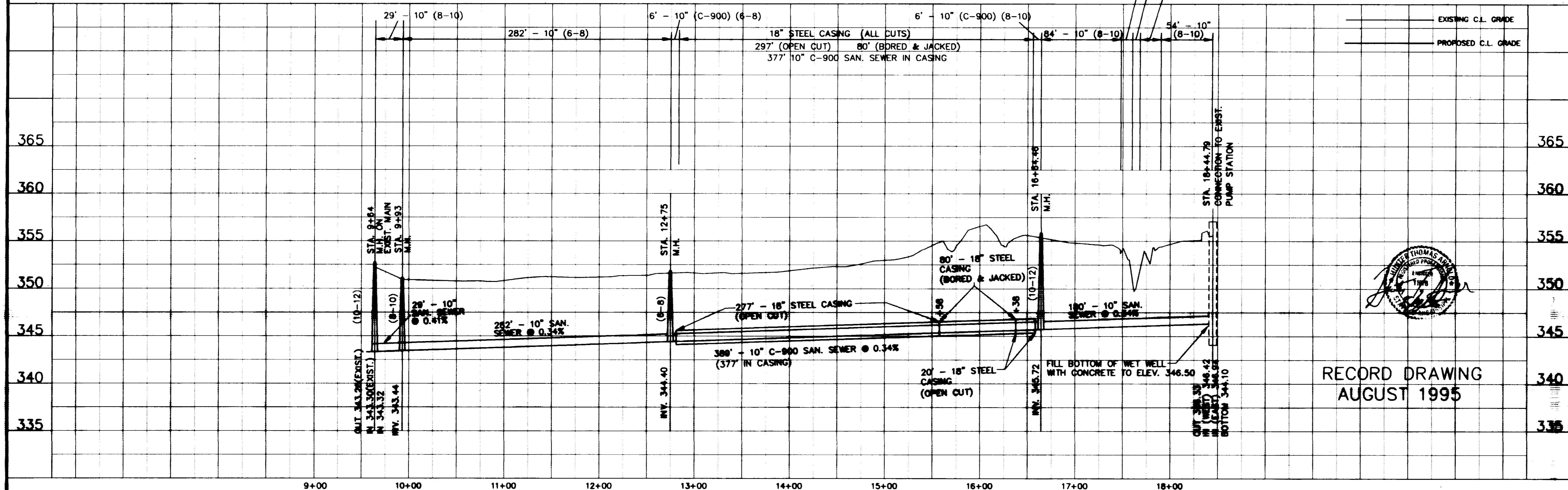
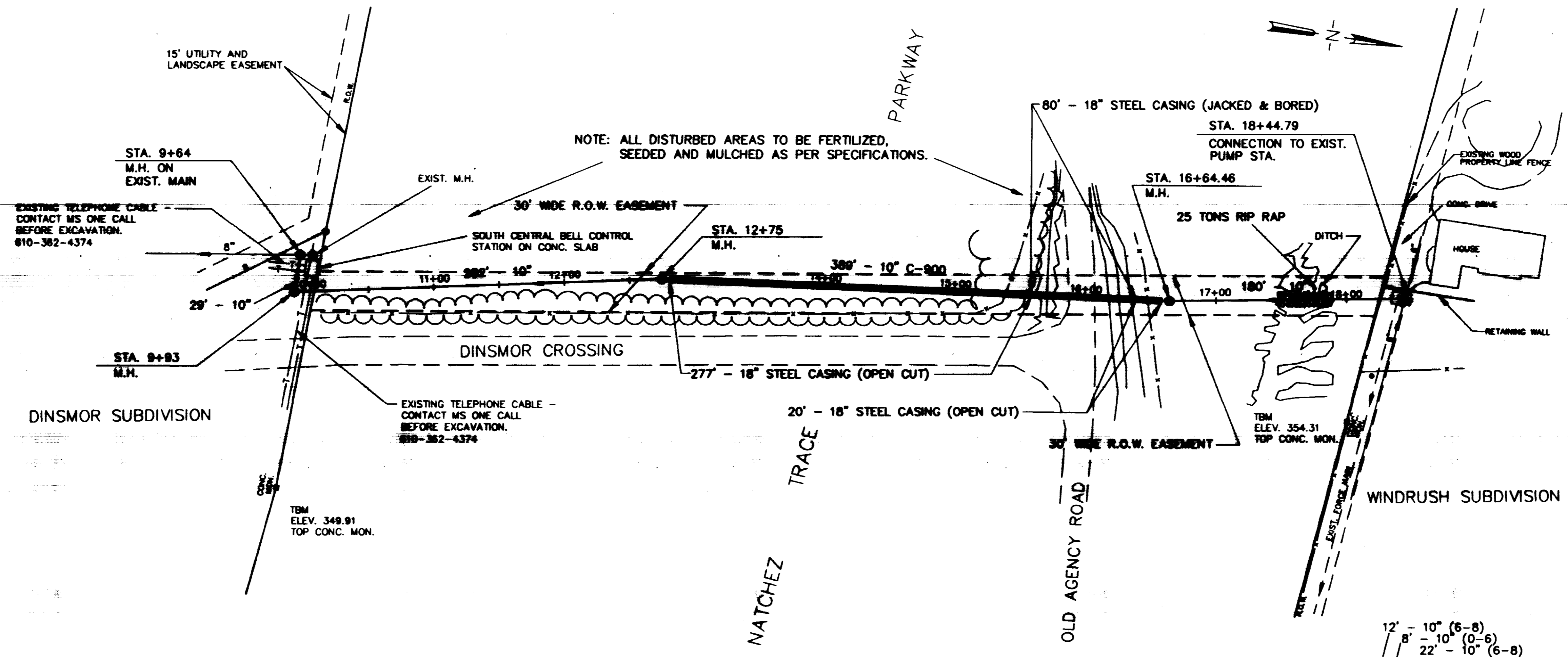
RECORD DRAWING  
 AUGUST 1995

CITY OF RIDGELAND, MISSISSIPPI		
NATCHEZ TRACE SANITARY SEWER CROSSING		
WAGGONER ENGINEERING, INC. Consulting Engineers - Jackson, Mississippi		
DESIGNED BY: R.C.	DATE: MAR. 95	SHEET NUMBER
DRAWN BY: R.C.	SCALE: 1" = 100'	1 OF 3

C:\P\0413\11 F11 Aug 11 06:25:44 1995  
 HP Designat 000 C:\MSOFT\AutoCAD\ACAD.DWG 11 HP-GL/2 A01 4.2 Wp 2.0 - by Mvstt-Prctard

CONSTRUCTION NOTES

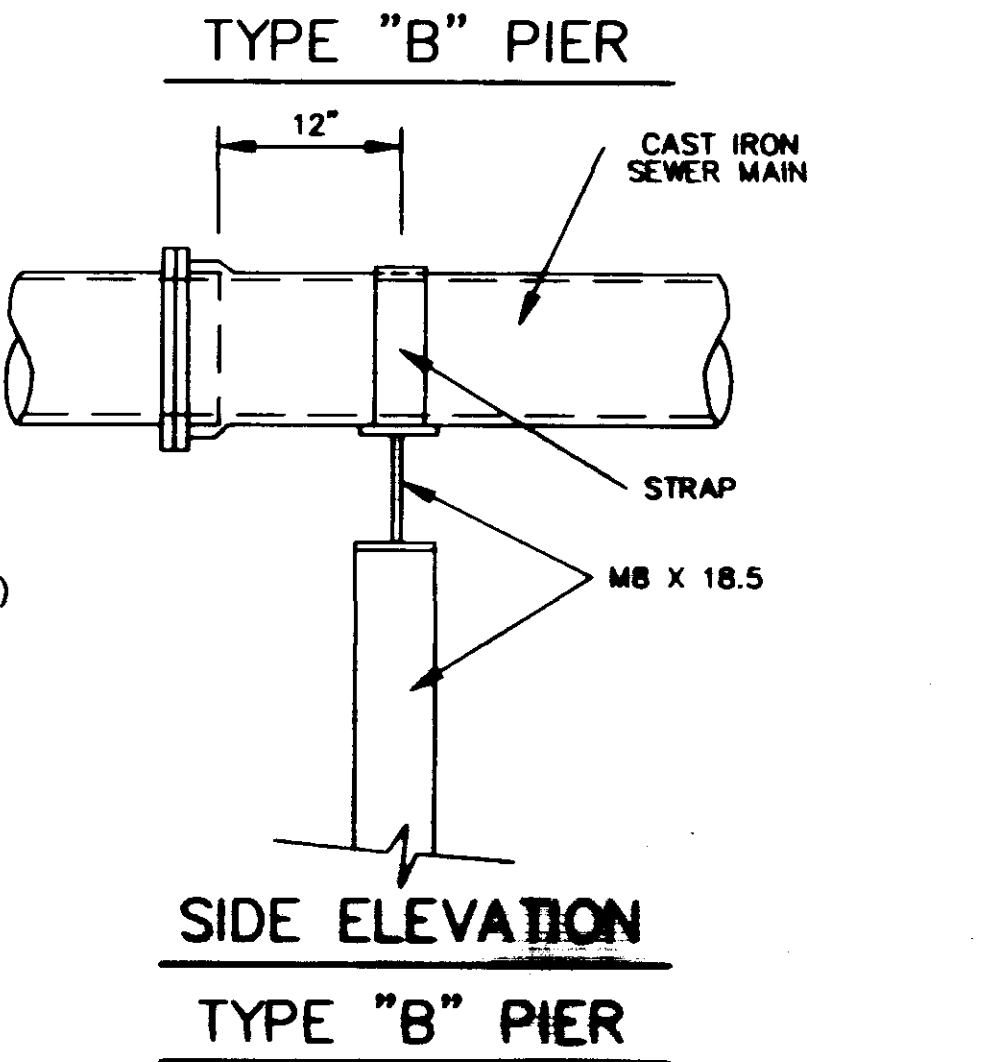
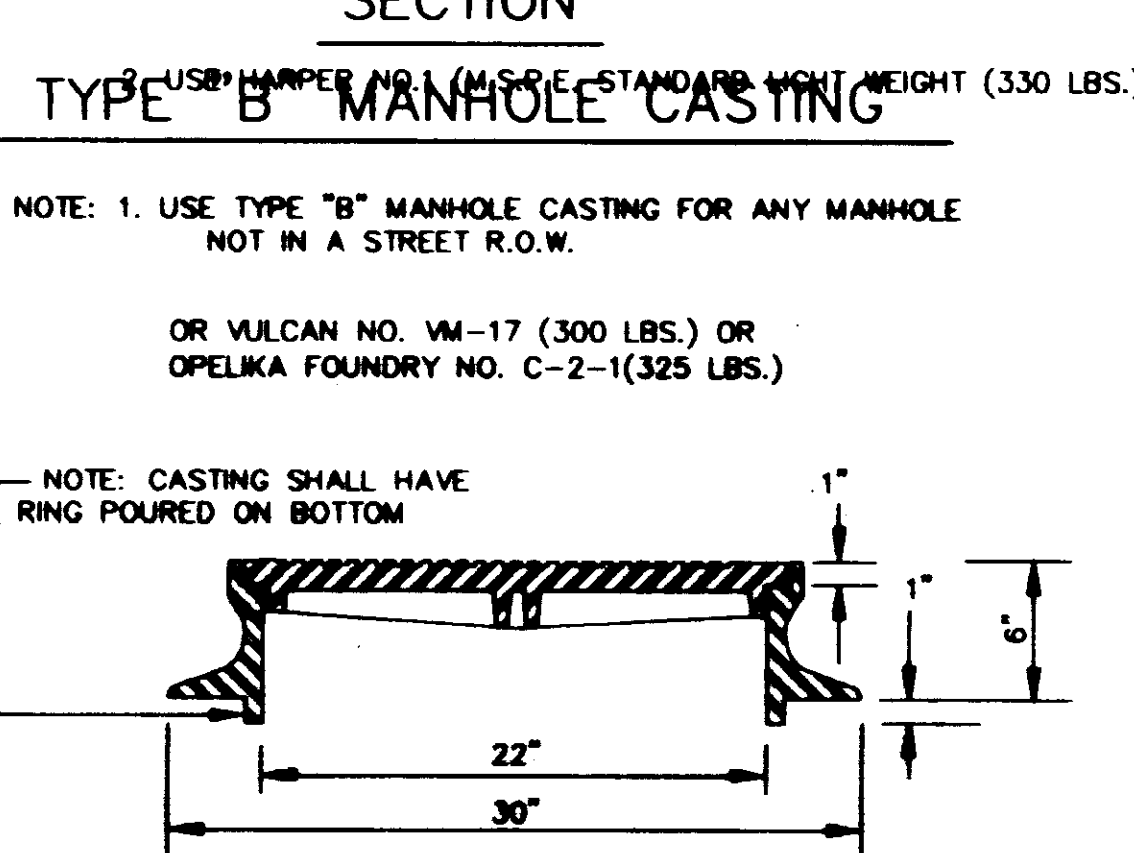
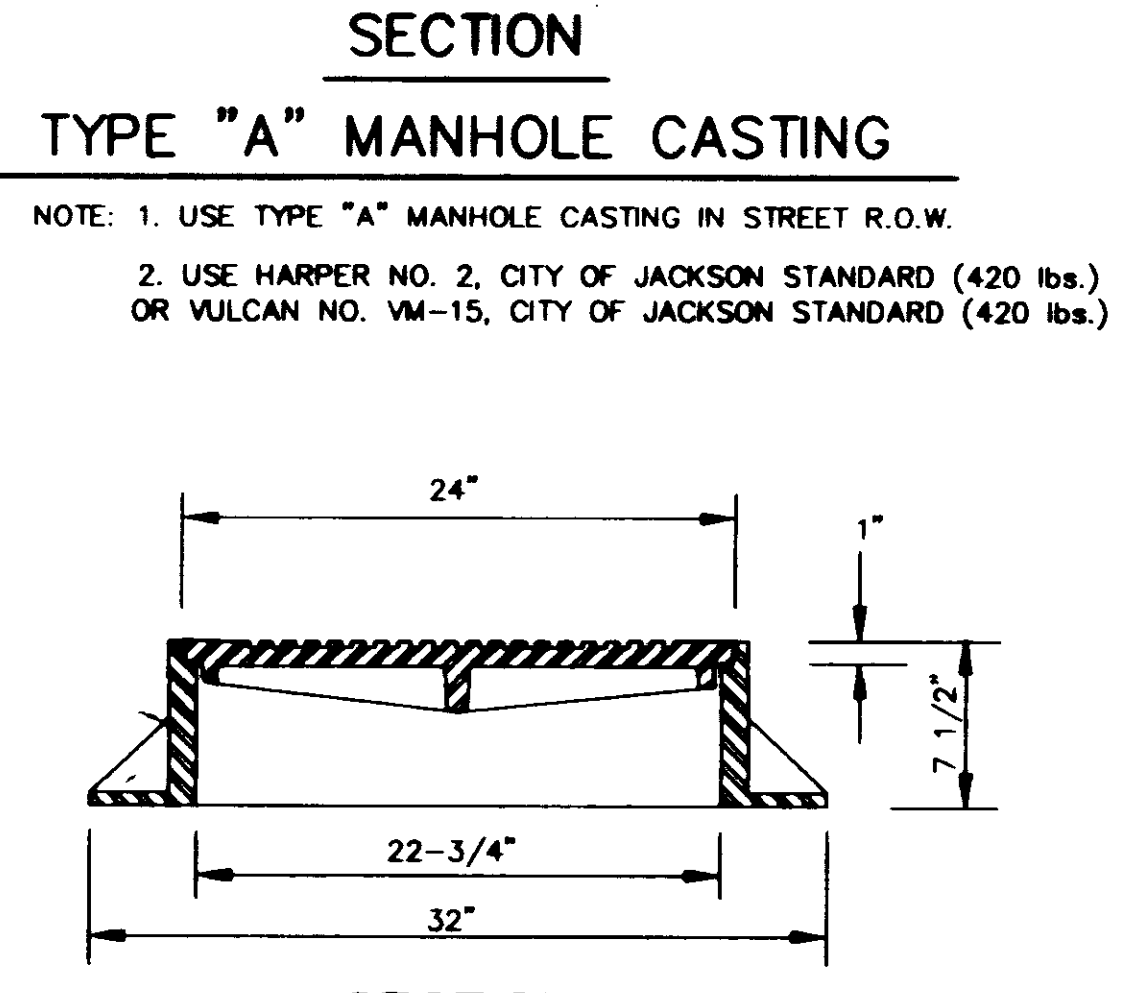
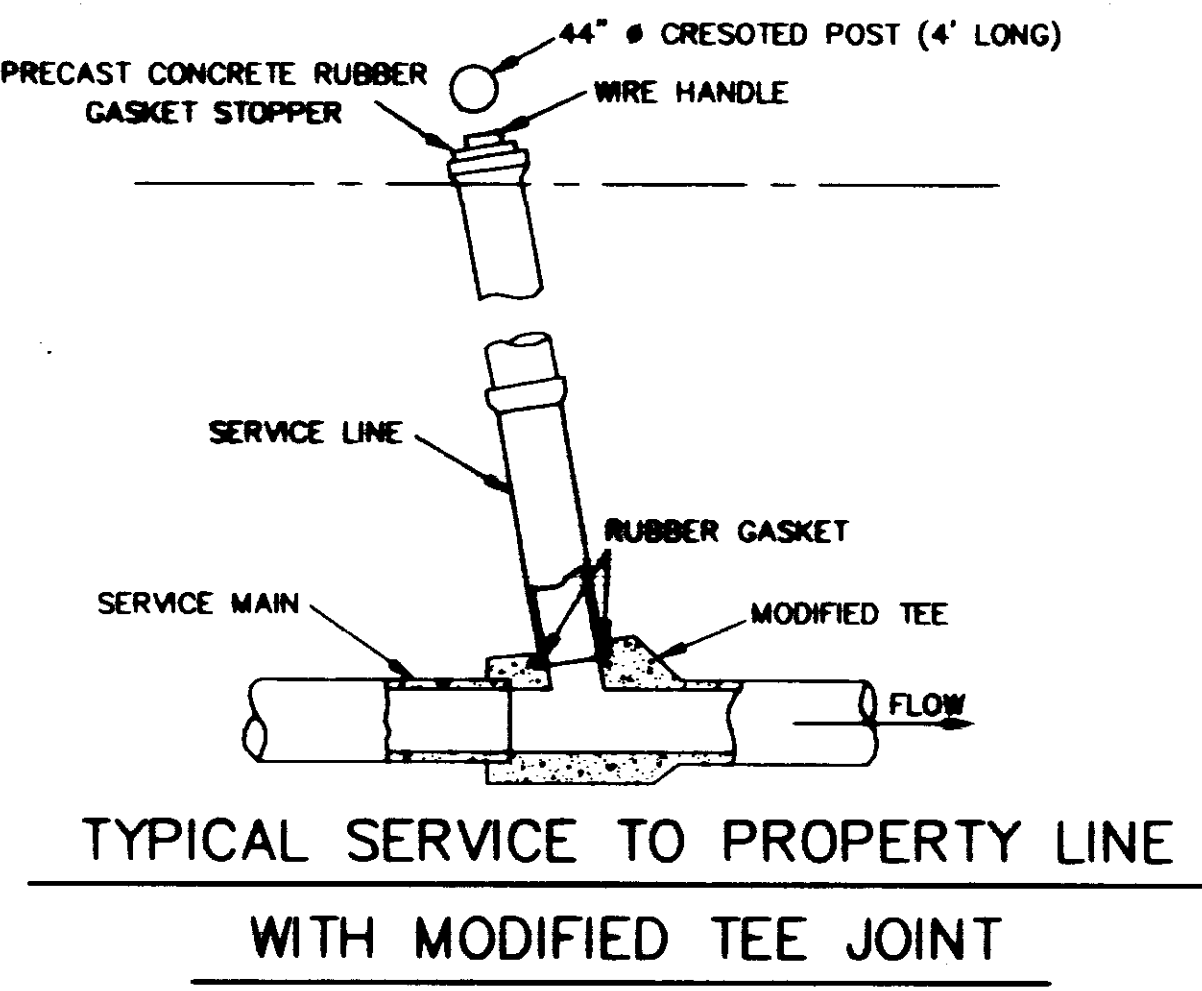
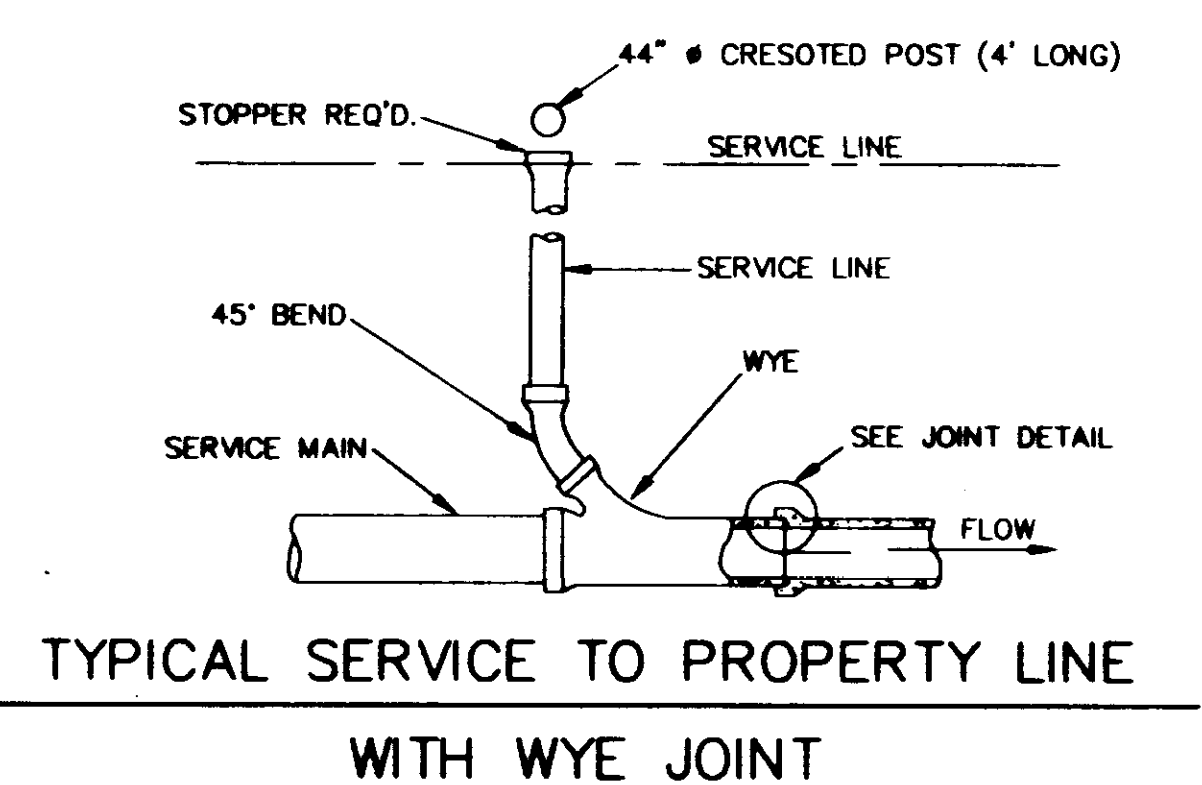
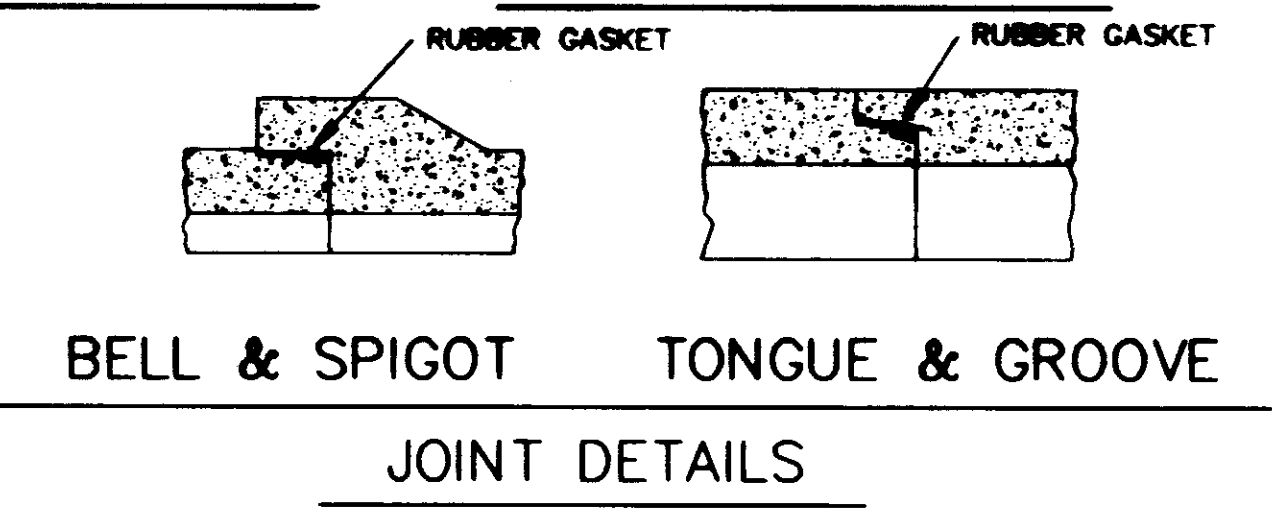
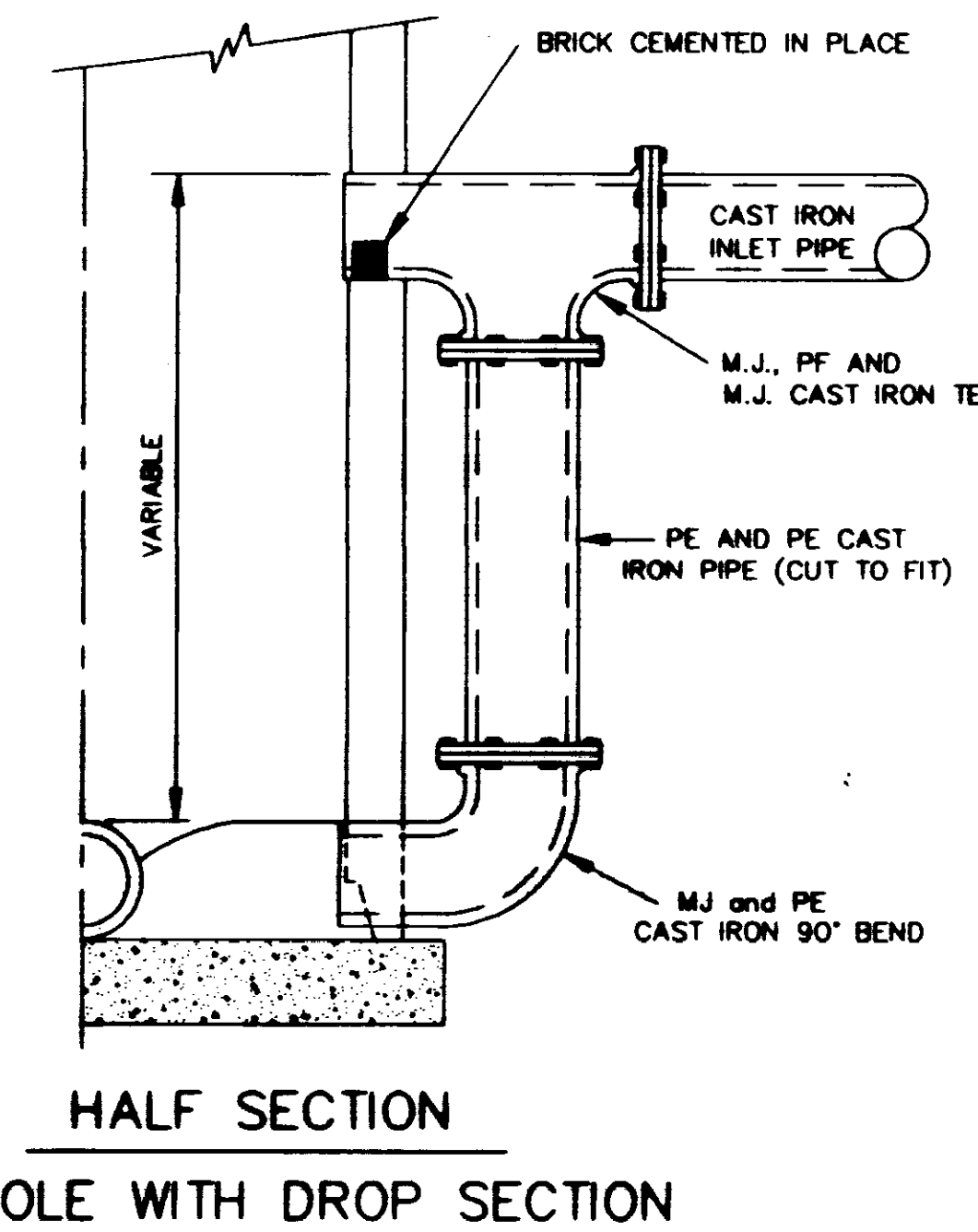
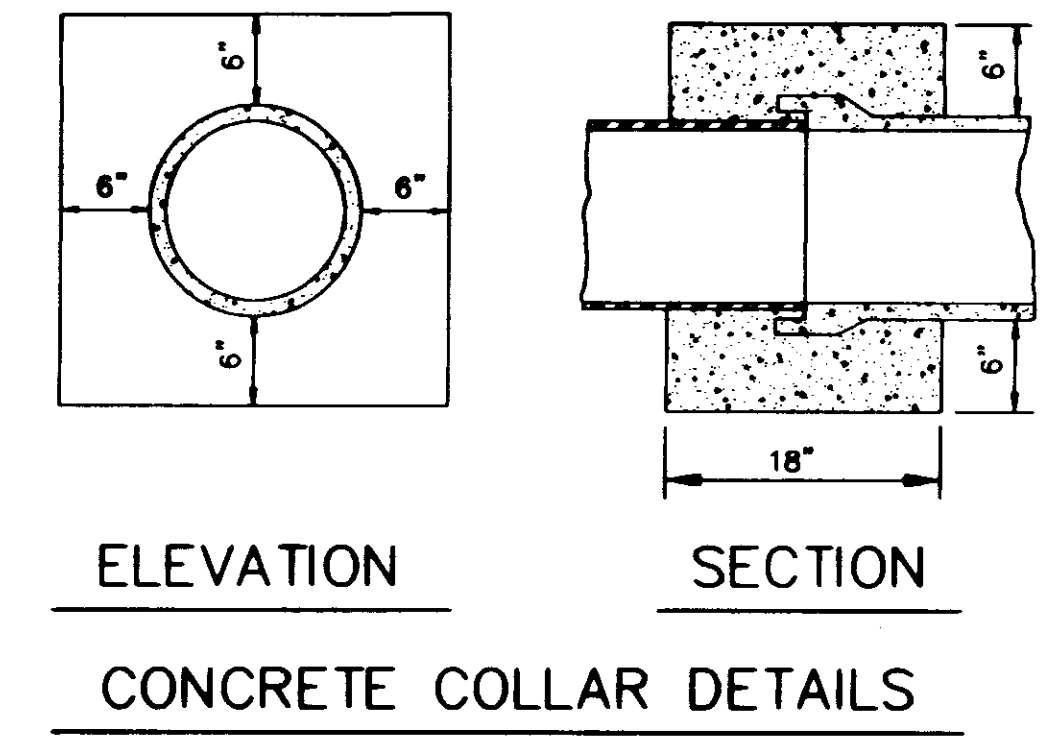
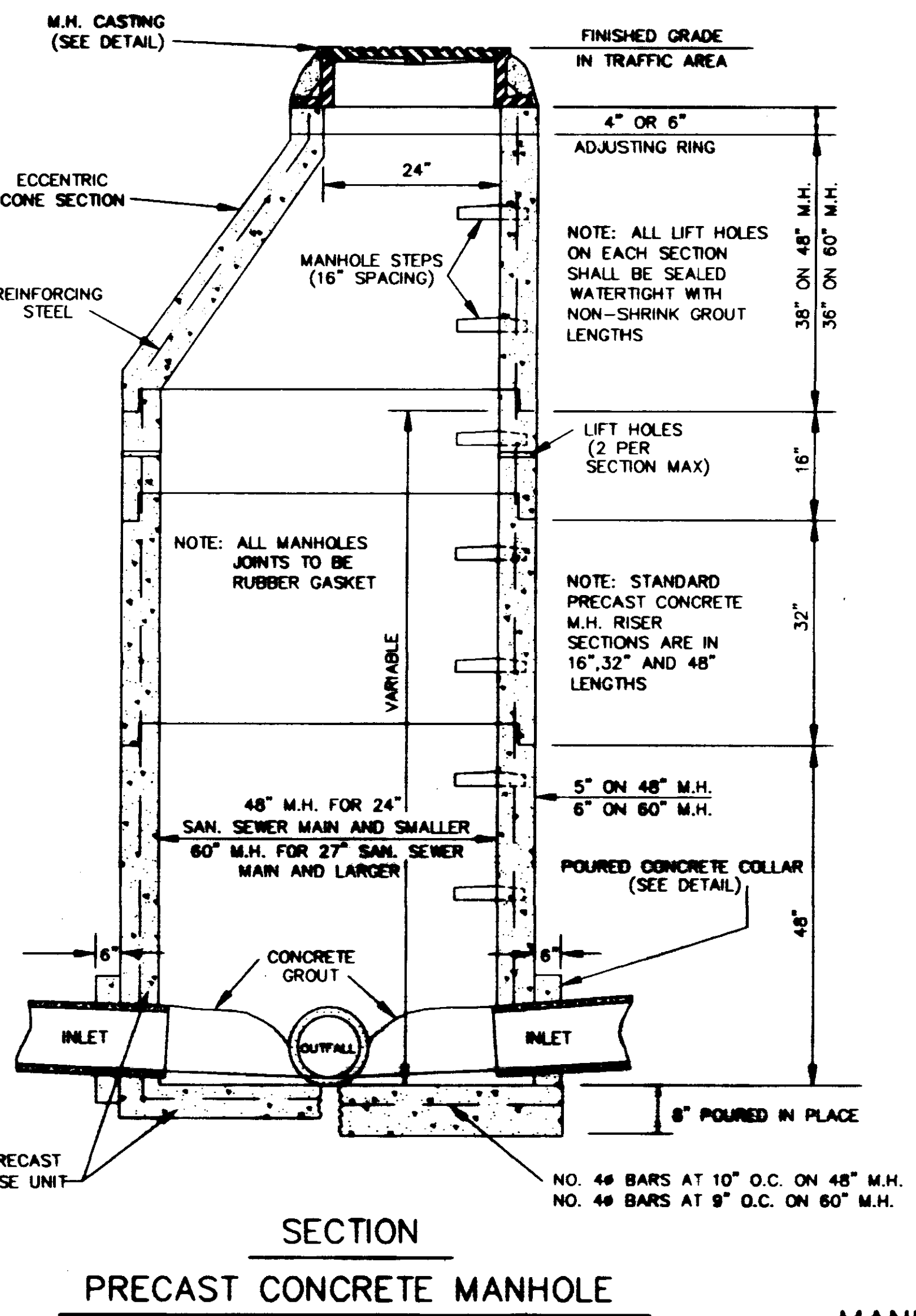
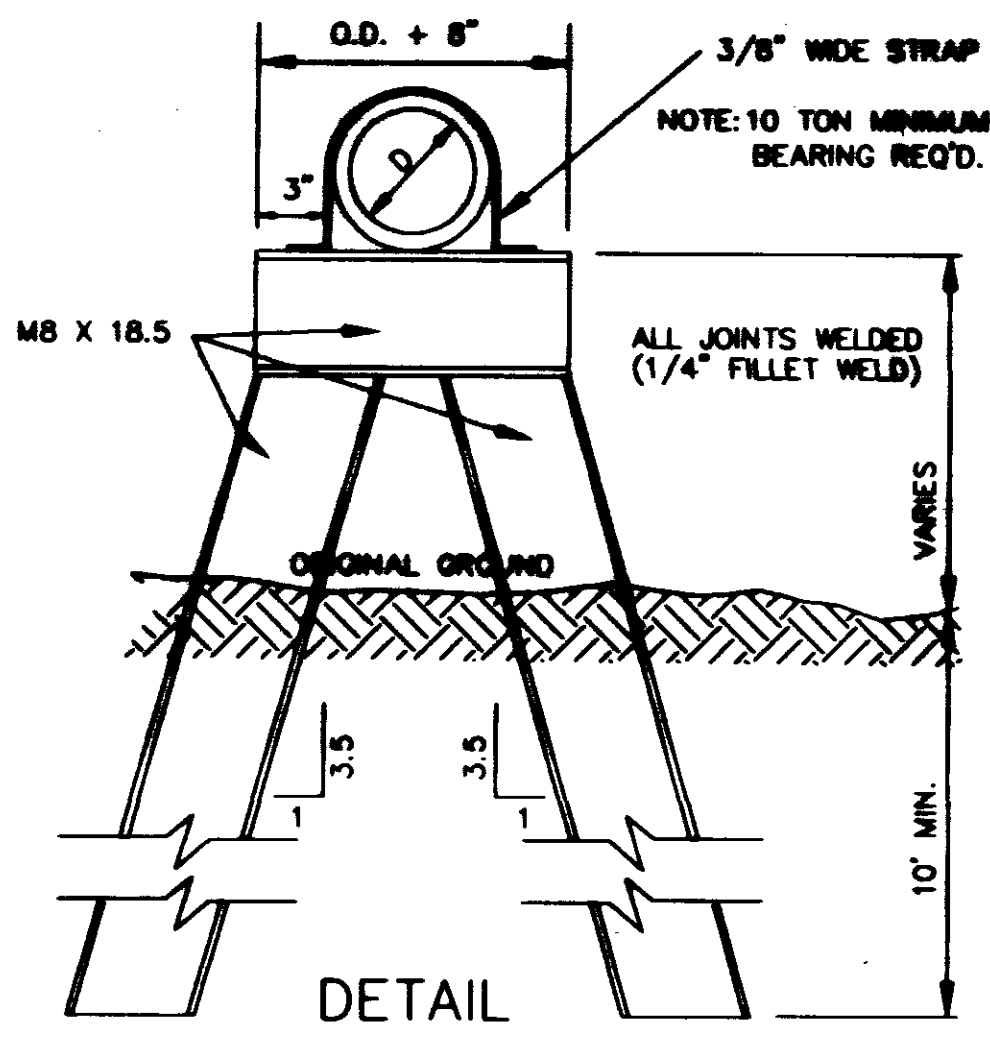
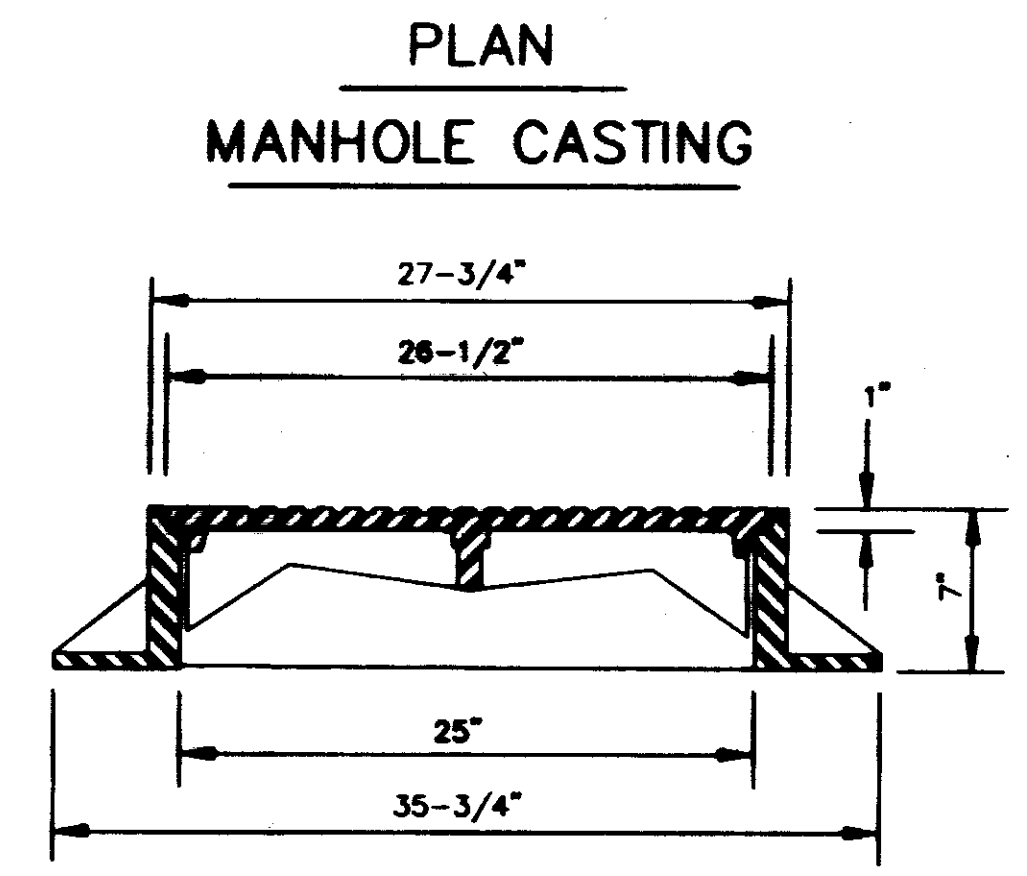
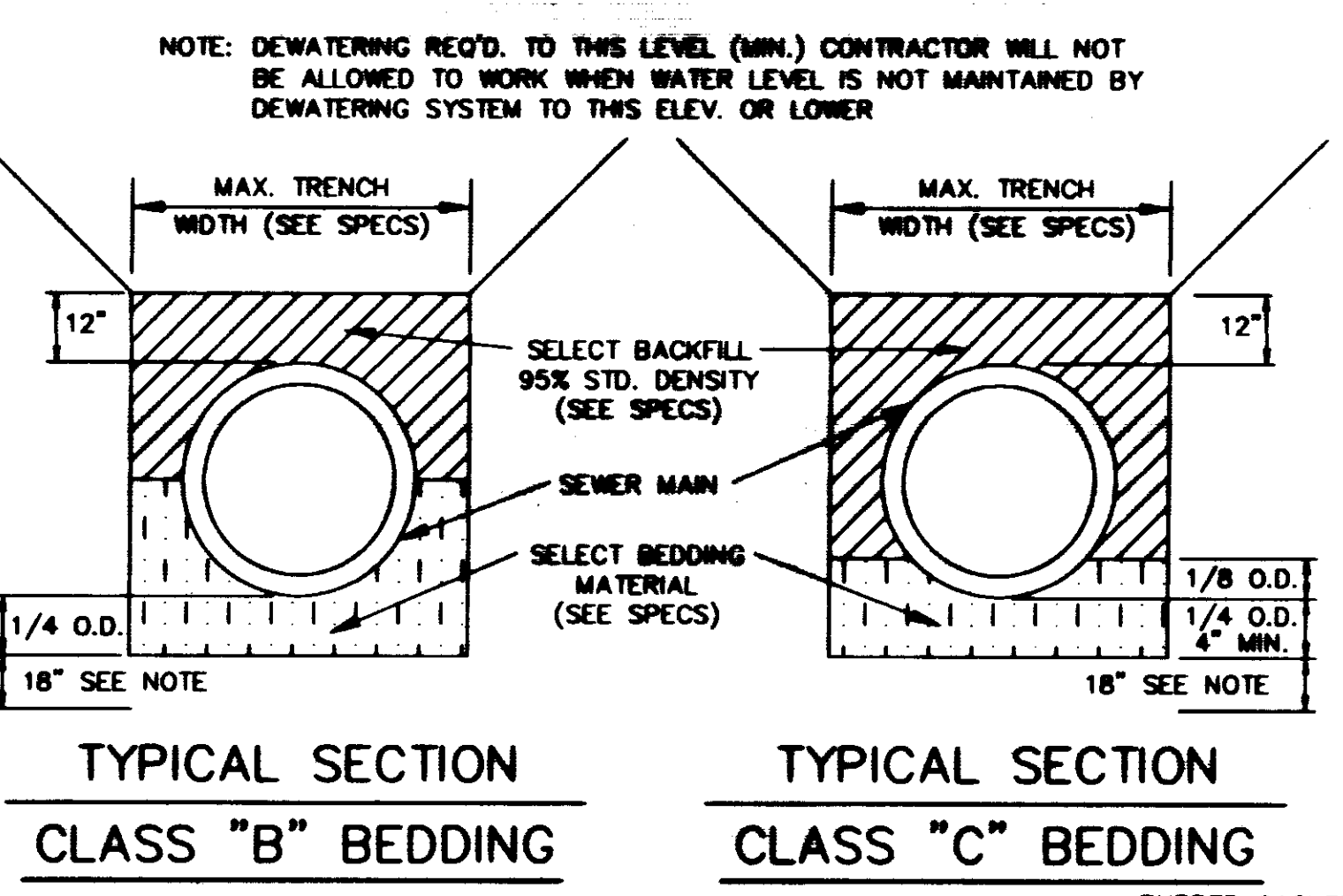
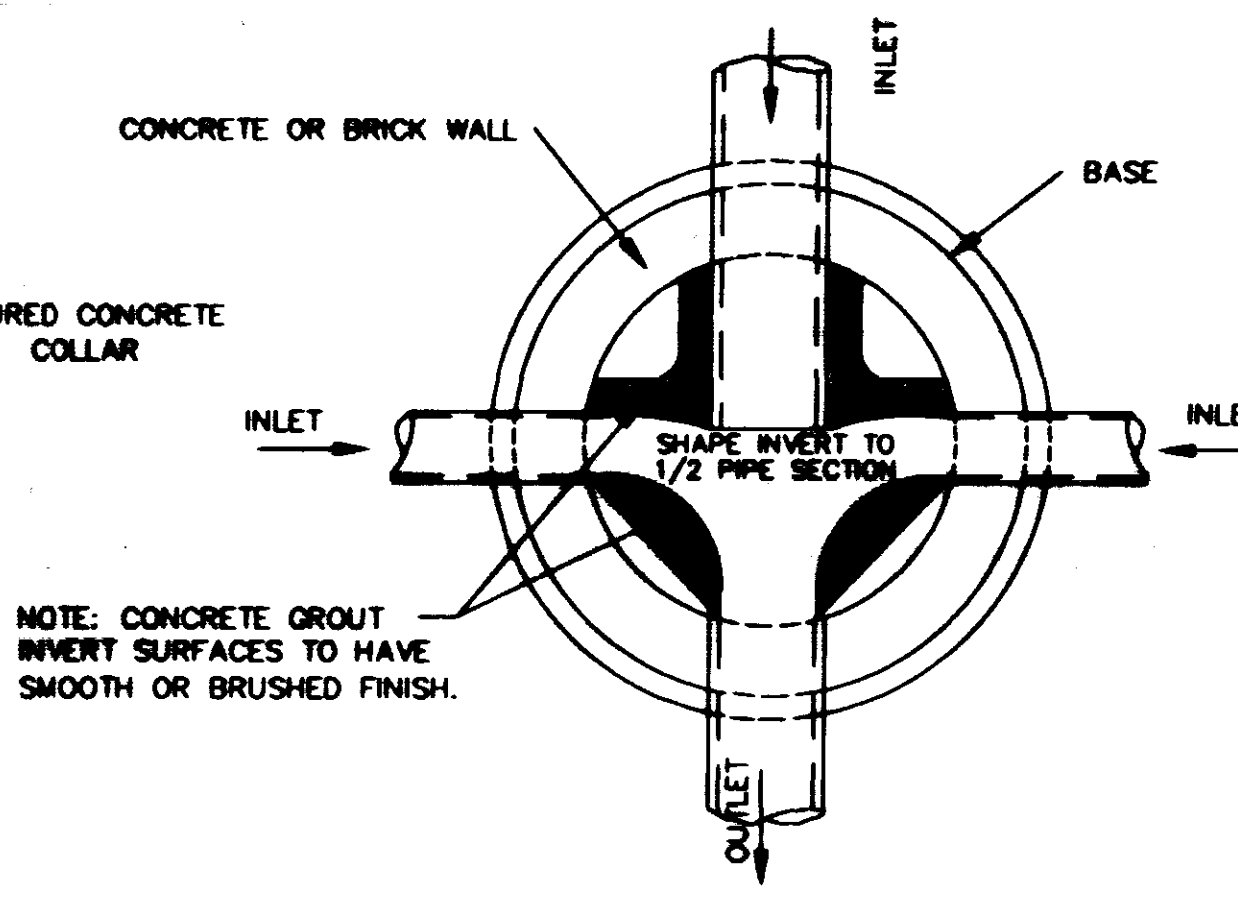
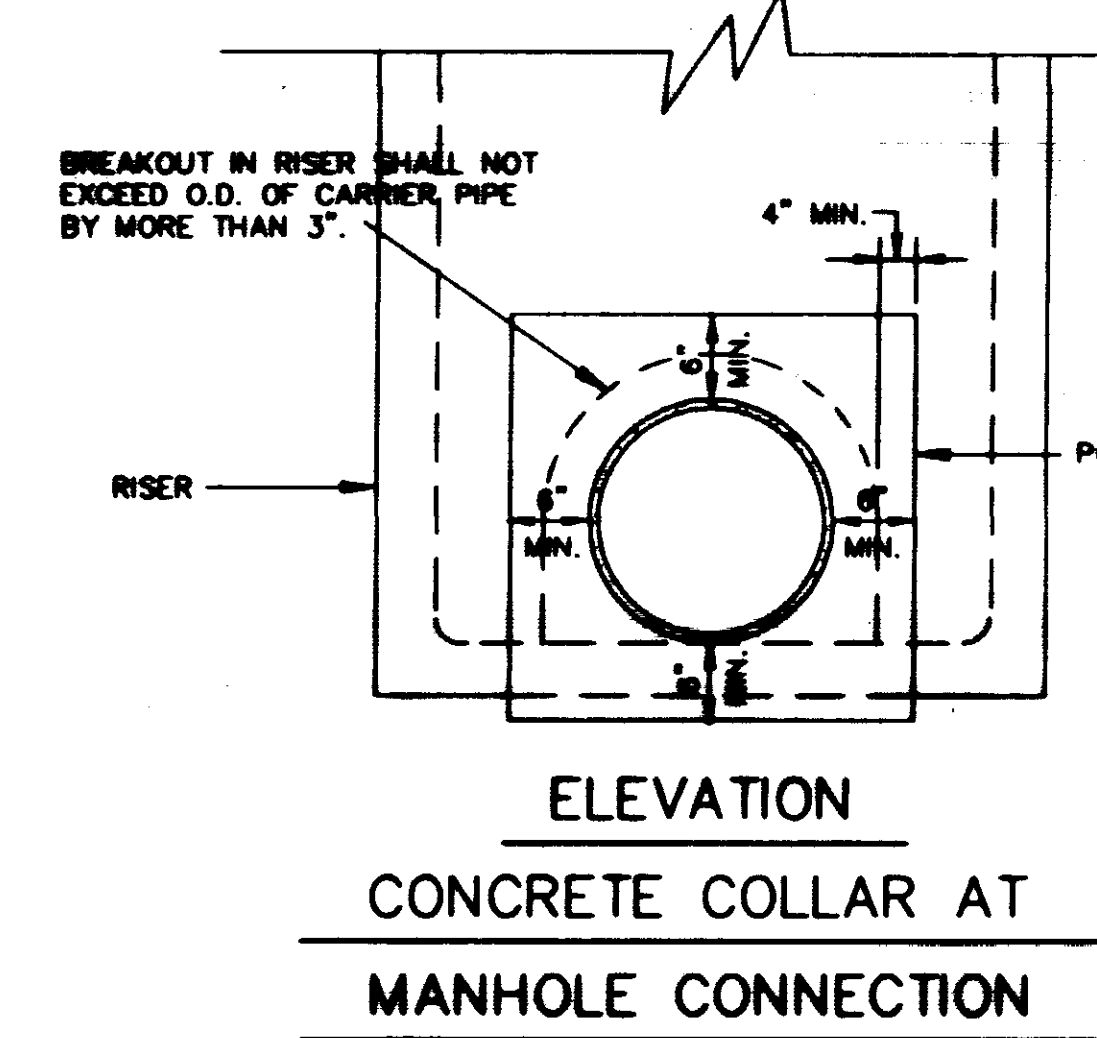
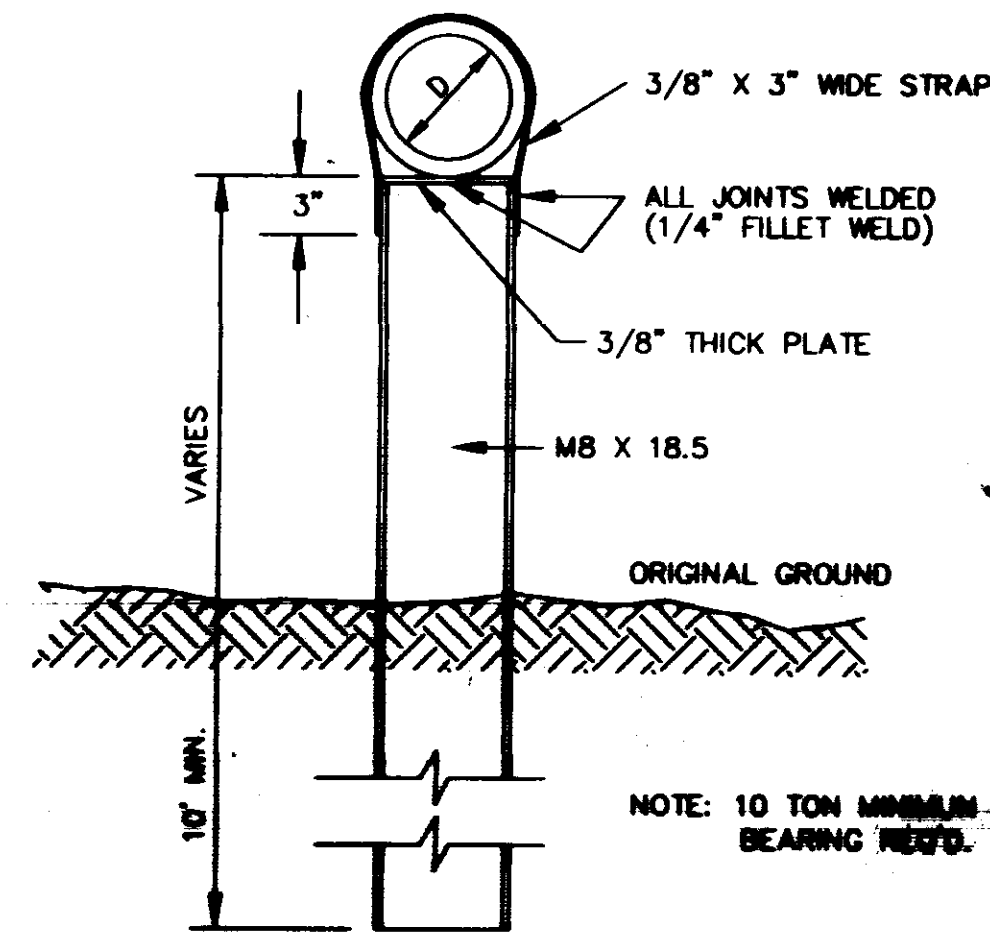
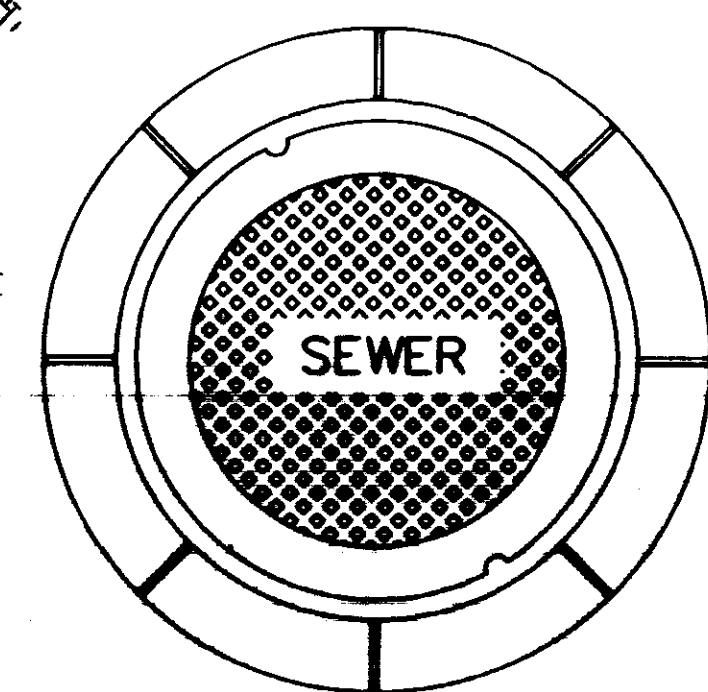
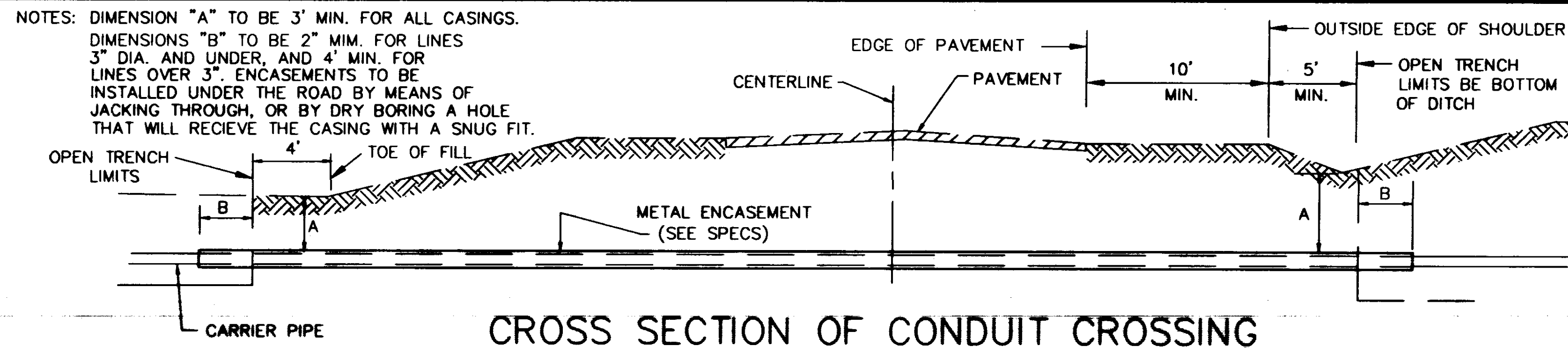
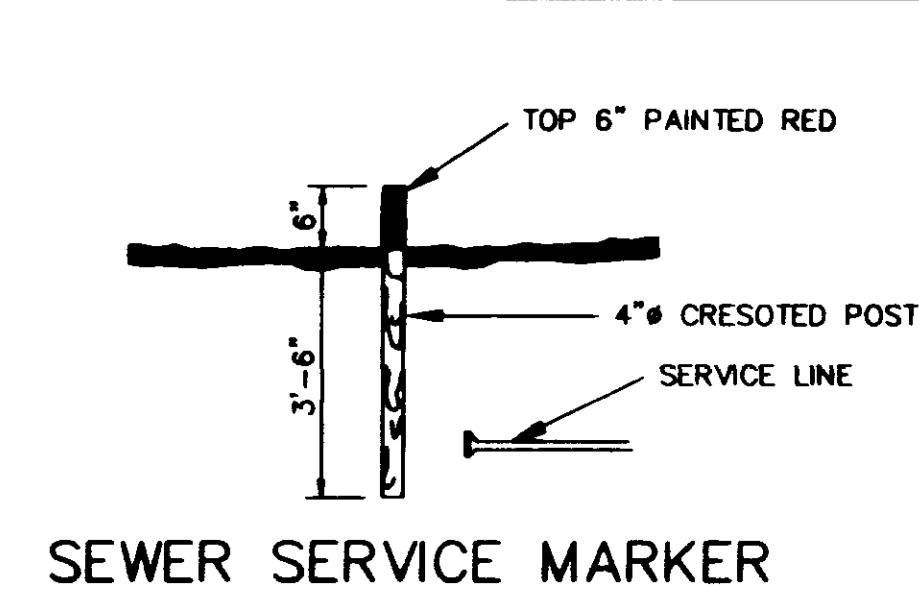
- 1: BYPASS PUMPING (IF REQ'D.) SHALL BE AN ABSORBED ITEM.
- 2: CONTRACTOR TO REMOVE AND REPLACE A SECTION OF EXISTING WOOD PROPERTY LINE FENCE AS NECESSARY FOR CONSTRUCTION.
- 3: TEMPORARY FENCE TO BE MAINTAINED DURING NON WORKING HOURS UNTIL FENCE IS RESTORED TO ITS ORIGINAL CONDITION.
- 4: COORDINATE WITH HOMEOWNER BEFORE REMOVING FENCE.
- 5: ALL DISTURBED AREA AROUND EXIST. PUMP STATION TO BE RESTORED WITH SOLID SOD.
- 6: REMOVE EXIST. PUMPS, PIPING, CONTROLS, POLE AND WOOD FENCE ENCLOSURE. DELIVER ABOVE TO THE CITY BARR.
- 7: REMOVE TOP 2 SECTIONS OF WETWELL AND REPLACE WITH 48" DIA. CONE SECTION AND W-12(WATERTIGHT) MANHOLE RING AND COVER. SET TO GRADE.
- 8: CONTRACTOR TO FURNISH AND INSTALL MAGNETIC LOCATOR TAPE 18" TO 24" ABOVE SEWER PIPE.
- 9: CONTRACTOR SHALL LOCATE ALL EXISTING UTILITIES AND PROTECT.



RECORD DRAWING  
AUGUST 1995

C:\V\MS\TRACE P1.dwg 11/08/95 10:58 AM  
 VP Design: GDC C:\MS\TRACE\DRAWING\09 11 10-0/2 A01 4.2 Ver 2.0 - by Merrett-Peckers

	DESIGNED W.S.	DATE MAR. 95	WACONER ENGINEERING INC. CONSULTING ENGINEERS JACKSON, MISSISSIPPI		NATCHEZ TRACE SANITARY SEWER CROSSING	ACAD PATH ROUTE C:\P\94138\TRACE
NO. DATE	BY	REVISIONS	SCALE 1" = 30' HORIZ. 1" = 5' VERT.			W.E.I. JOB NO. 94138
						SHEET NO. 2 OF 3



**NOTE: 1. USE TYPE "A" MANHOLE CASTING IN STREET R.O.W.**  
**2. USE HARPER NO. 2, CITY OF JACKSON STANDARD (420 lbs.) OR VULCAN NO. VM-15, CITY OF JACKSON STANDARD (420 lbs.)**

**NOTE: 1. USE TYPE "B" MANHOLE CASTING FOR ANY MANHOLE NOT IN A STREET R.O.W.**  
**OR VULCAN NO. VM-17 (300 LBS.) OR OPELIKA FOUNDRY NO. C-2-1 (325 LBS.)**

**NOTE: CASTING SHALL HAVE RING POURED ON BOTTOM**

**NOTE: 1. USE TYPE "C" MANHOLE CASTING FOR PRECAST NOT IN A STREET R.O.W.**  
**2. USE HARPER NO.8 (330 LBS.) OR (NEENAH NO. R-1779 (300 LBS) OR VULCAN NO. VM-7 (300 LBS.)**

**RECORD DRAWING AUGUST 1995**

<b>CITY OF RIDGELAND, MISSISSIPPI</b>		
<b>SANITARY SEWER - STANDARD DETAILS</b>		
<b>NATCHEZ TRACE</b>		
<b>SANITARY SEWER CROSSING</b>		
WAGGONER ENGINEERING, INC. Consulting Engineers - Jackson, Mississippi		
DESIGN BY: C.R.H.	DATE: MAR. 95	SHEET NUMBER
REVISION BY: N.S.	SCALE: N.T.S.	3 OF 3

C:\PROGRAMS\DESIGN\DWG\F11 Aug 11 08 27:27 1995  
HP DesignPlot 600 C:\MICROSOFT\UNIDRAW\CP6 11 HP-BL/2 ADT 4.2 Ver. 2.0 - By Hewlett-Packard