

# CITY OF RIDGELAND, MISSISSIPPI

## SPECIAL ASSESSMENT IMPROVEMENTS

### WATER AND STREET FACILITIES

*North Park Dr.*

Mayor

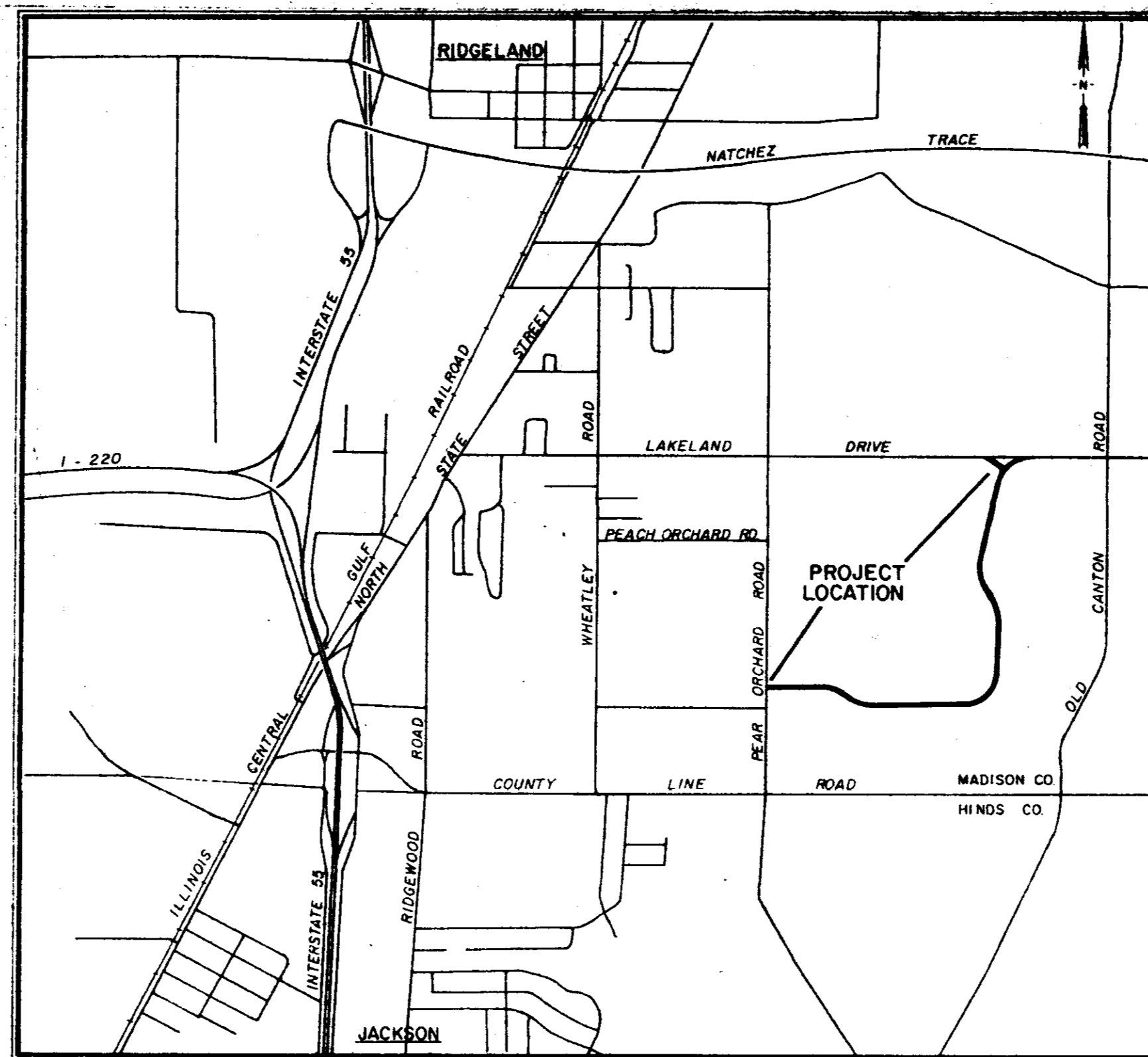
Hite Wolcott

Mayor Pro Tem

Raymond McClure

City Attorney

Bob Montgomery



Aldermen

Harvey Carr Jr.

Don Lindsly

Jack Martin

W.C. McClellan

Raymond McClure

City Clerk

Marcella Cannon

OCTOBER, 1982

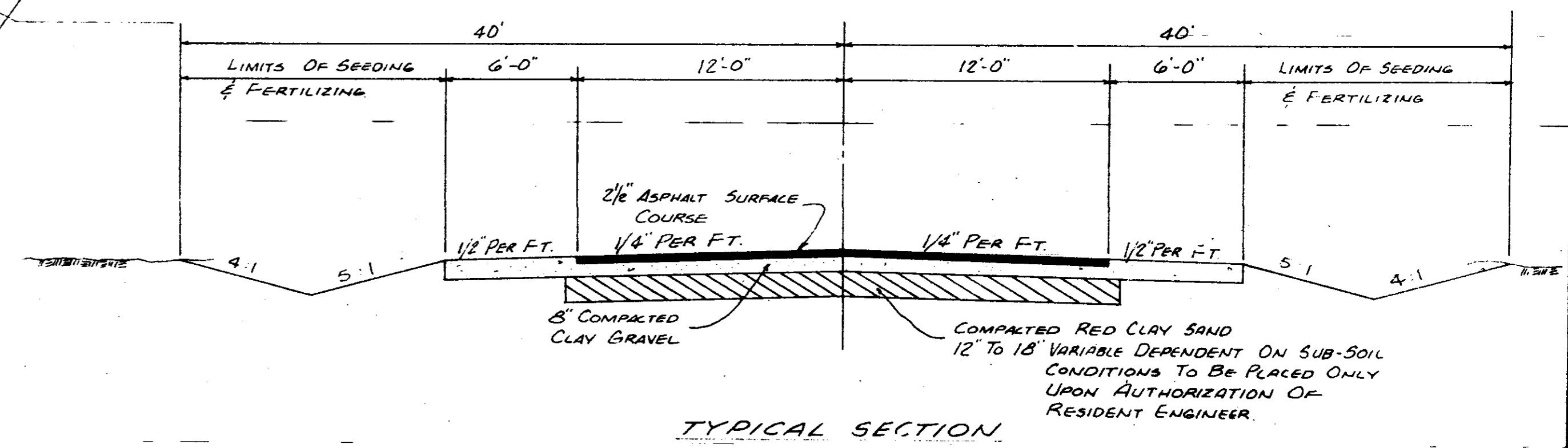
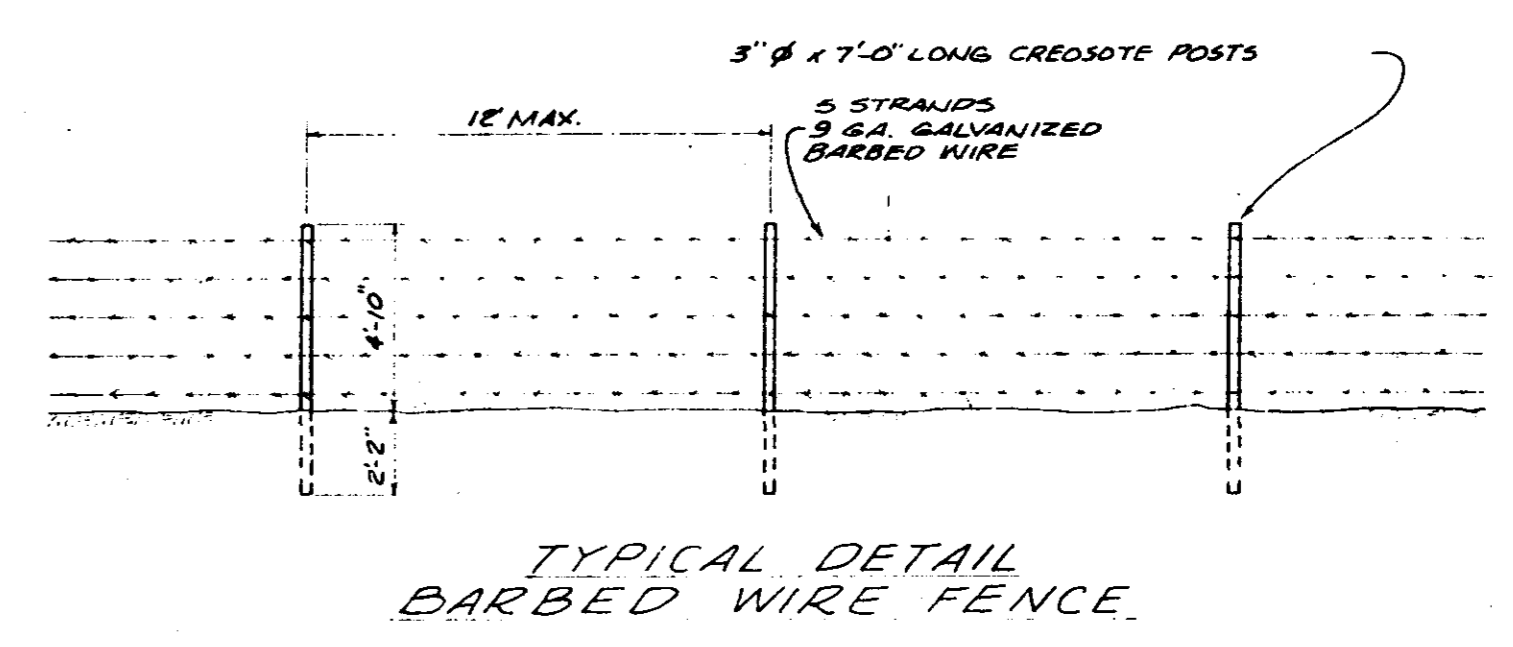
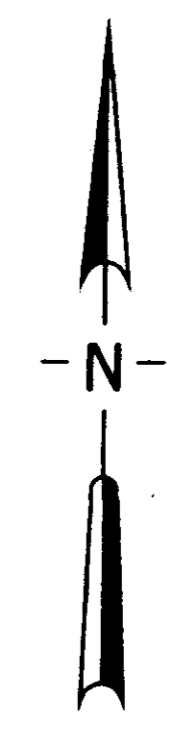
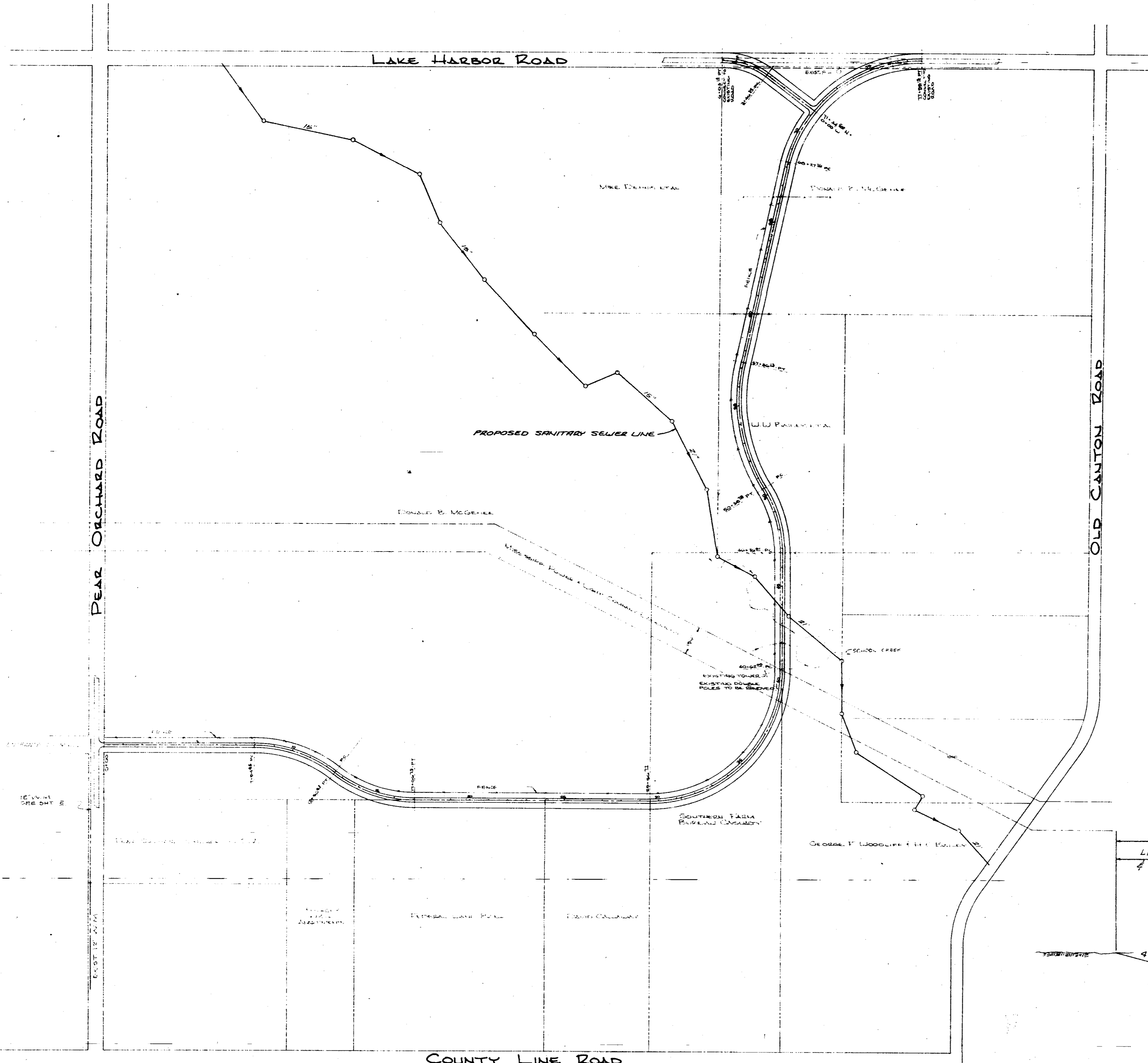
JOE A. WAGGONER

Civil Engineer

Brandon / Jackson, Mississippi

RECORD  
DRAWINGS  
FEBRUARY 1988

*PWP-01909*



**RECORD DRAWINGS**  
FEBRUARY 1990

CITY OF RIDGELAND, MISSISSIPPI		
SPECIAL ASSESSMENT IMPROVEMENTS		
JOE A. WAGGONER Civil Engineer - Brandon/Jackson, Miss.		
DRAWN BY WISE	DATE OCT 1992	SHEET NO.
CHECKED BY J.A.W.	SCALE 1" = 300'	1 OF 12

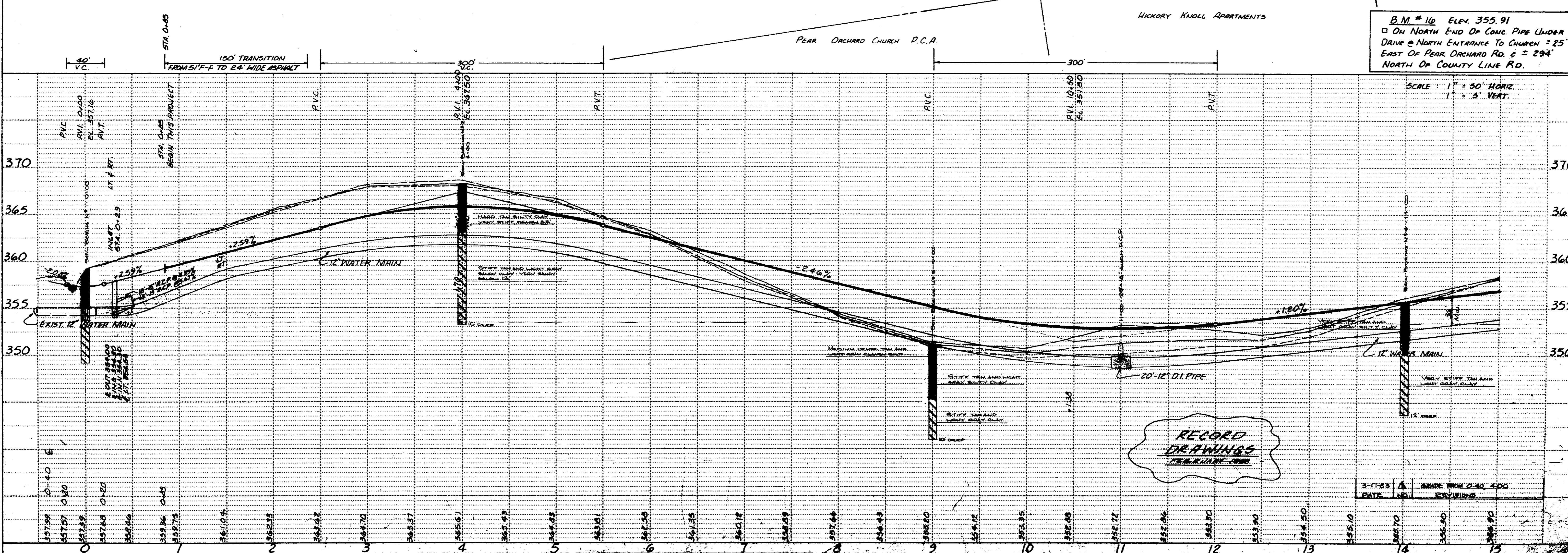
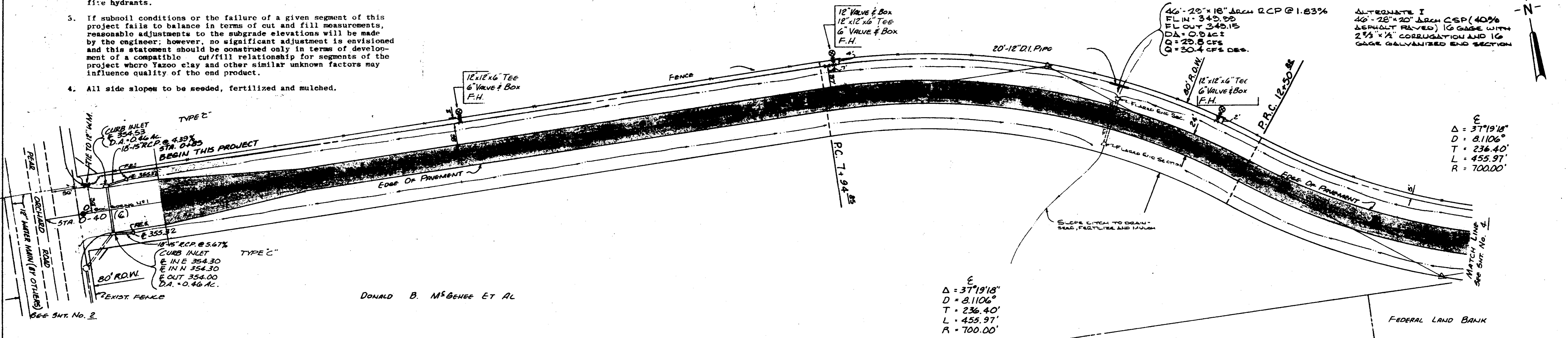
NOTES

- All buried utility locations are approximate only. Prior to any construction the applicable utility company should be contacted for exact location and depth.
- Engineer retains the right to direct exact placement of all fire hydrants.
- If subsoil conditions or the failure of a given segment of this project fails to balance in terms of cut and fill measurements, reasonable adjustments to the subgrade elevations will be made by the engineer; however, no significant adjustment is envisioned and this statement should be construed only in terms of development of a compatible cut/fill relationship for segments of the project where Yazoo clay and other similar unknown factors may influence quality of the end product.
- All side slopes to be seeded, fertilized and mulched.

DONALD B. McGEHEE ET AL

DATE	
BY	
PLAN	
DATE	
BY	
PLAN	
DATE	
BY	
PLAN	
DATE	
BY	
PLAN	

DATE	
BY	
PROFILE	
DATE	
BY	
PROFILE	
DATE	
BY	
PROFILE	
DATE	
BY	
PROFILE	



B.M. # 16 ELEV. 355.91  
 □ ON NORTH END OF CONC. PIPE UNDER DRIVE @ NORTH ENTRANCE TO CHURCH = 25' EAST OF PEAR ORCHARD RD. ± 294' NORTH OF COUNTY LINE RD.

SCALE: 1" = 50' HORIZ.  
 1" = 5' VERT.

PLATE 1-SINGLE PLAN AND PROFILE-PULL OUT

SPECIAL ASSESSMENT INADVERTENT

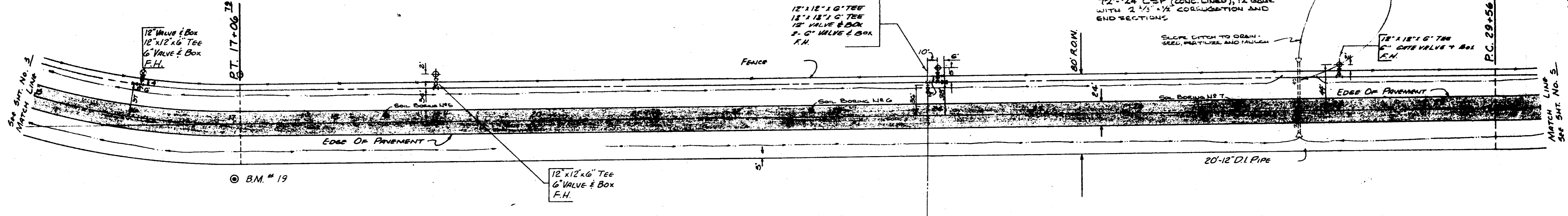
$\Delta = 37^{\circ}19'16''$   
 $D = 8.11066'$   
 $T = 236.40'$   
 $L = 455.97'$   
 $R = 700.00'$

DONALD B. McGEHEE ET AL

72'-24" RCP @ 5.03% WITH FLARED END SECTIONS  
 FL IN - 321.52  
 FL OUT - 317.13  
 DL = 12.62'  
 Q = 43.2 CFS  
 Q' = 55.1 CFS SEE.

ALTERNATE I  
 72'-24" CSP (CONC. LINED), 12 GAGE  
 WITH 2 1/3" x 1/2" CORRUGATION AND  
 END SECTIONS

DATE	
BY	
DATE	
BY	
SURVEYED	
GRADES CHECKED	
ALIGNED CHECKED	
BY OF WAY CHECKED	
NO.	
PLAN	
DATE	
BY	
NO.	



FEDERAL LAND BANK

NOTES

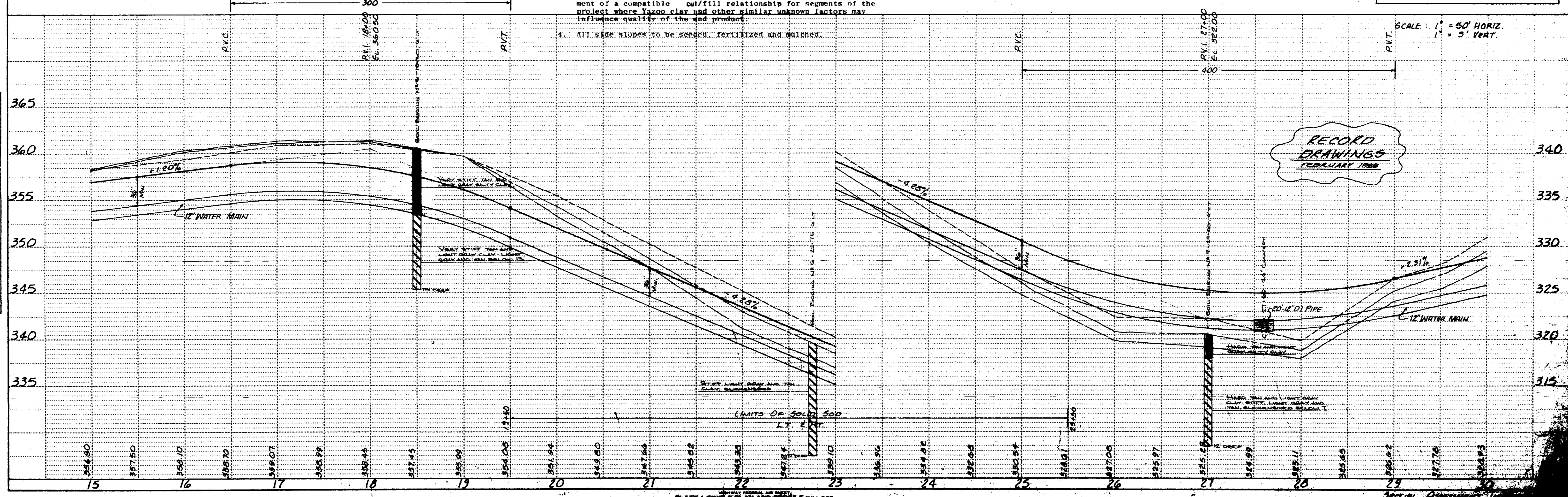
- All buried utility locations are approximate only. Prior to any construction the applicable utility company should be contacted for exact location and depth.
- Engineer retains the right to direct exact placement of all fire hydrants.
- If subsoil conditions or the failure of a given segment of this project fails to balance in terms of cut and fill measurements, reasonable adjustments to the subgrade elevations will be made by the engineer; however, no significant adjustment is envisioned and this statement should be construed only in terms of development of a compatible cut/fill relationship for segments of the project where Yazoo clay and other similar unknown factors may influence quality of the end product.
- All side slopes to be seeded, fertilized and mulched.

DAVID CALLAWAY ET AL

B.M. # 19 ELEV. 361.98  
 SPIKE IN SIDE 10" WALNUT 55 RT  
 OF STA 17+00

SCALE: 1" = 50' HORIZ.  
 1" = 3' VERT.

DATE	
BY	
DATE	
BY	
SURVEYED	
GRADES CHECKED	
E. M. NOTED	
STRUCTURE NOTING CHECKED	
NO.	
PROFILE	
DATE	
BY	
NO.	

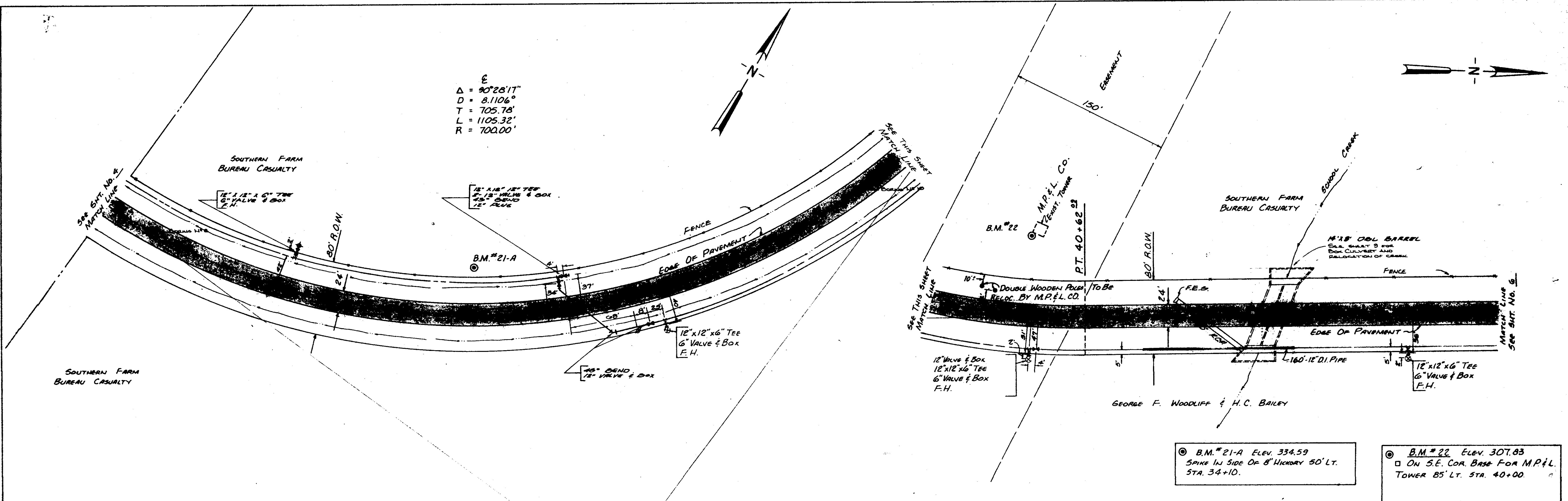


RECORD  
 DRAWINGS  
 FEBRUARY 1988

SPECIAL AGREEMENT

$\Delta = 90^\circ 28' 17''$   
 $D = 8.1106'$   
 $T = 705.78'$   
 $L = 1105.32'$   
 $R = 700.00'$

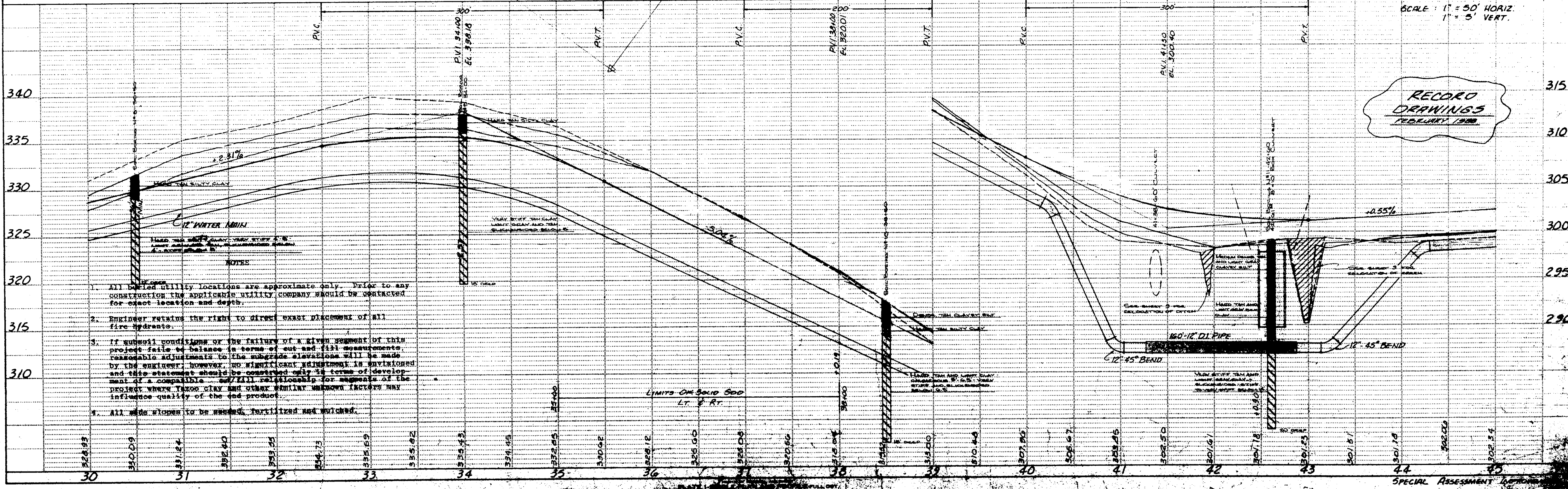
PLAN	DATE
CHECKED	
PLOTTED	
GRADES CHECKED	
BY	
DATE	



B.M. #21-A ELEV. 334.59  
 SPIKE IN SIDE OF 8' HIGHWAY 50' LT.  
 STA. 34+10.

B.M. #22 ELEV. 307.83  
 ON S.E. COR. BASE FOR M.P. & L.  
 TOWER 85' LT. STA. 40+00.

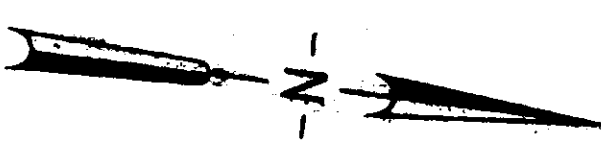
PROFILE	DATE
CHECKED	
PLOTTED	
GRADES CHECKED	
BY	
DATE	



RECORD DRAWINGS  
 FEBRUARY 1988

- NOTES
- All buried utility locations are approximate only. Prior to any construction the applicable utility company should be contacted for exact location and depth.
  - Engineer retains the right to direct exact placement of all fire hydrants.
  - If subsoil conditions or the failure of a given segment of this project fails to balance in terms of cut and fill measurements, reasonable adjustments to the subgrade elevations will be made by the engineer. HOWEVER, NO NIGHTSMAN VALUATIONS AS ENTITLED AND THIS STATEMENT SHOULD BE CONSIDERED IN TERMS OF DEVELOPMENT OF A COMPLETE AND FAIR RELATIONSHIP FOR PURPOSES OF THE PROJECT WHEN TAKEN CLAY AND OTHER SIMILAR UNKNOWN FACTORS MAY INFLUENCE QUALITY OF THE END PRODUCT.
  - All wide flowers to be seeded, fertilized and mulched.

SPECIAL ASSESSMENT

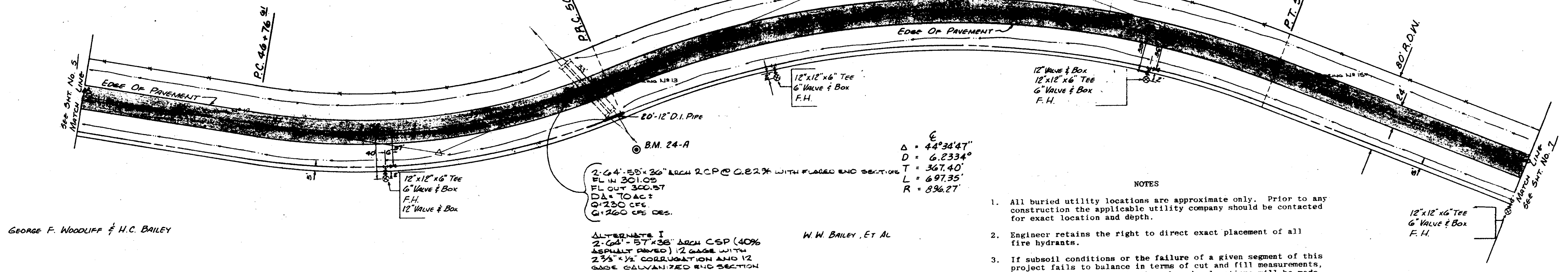


$\Delta = 32^{\circ}07'04''$   
 $D = 8,320.5'$   
 $T = 185.98'$   
 $L = 362.17'$   
 $R = 646.08'$

W. W. BAILEY, ET AL

SOUTHERN FARM  
BUREAU CASUALTY

DATE	BY	REVISIONS
		1. SURVEYED
		2. PLOTTED
		3. CHECKED
		4. RE-CHECKED
		5. RE-CHECKED
		6. RE-CHECKED



$\Delta = 44^{\circ}34'47''$   
 $D = 6,233.4'$   
 $T = 367.40'$   
 $L = 697.35'$   
 $R = 896.27'$

NOTES

1. All buried utility locations are approximate only. Prior to any construction the applicable utility company should be contacted for exact location and depth.
2. Engineer retains the right to direct exact placement of all fire hydrants.
3. If subsoil conditions or the failure of a given segment of this project fails to balance in terms of cut and fill measurements, reasonable adjustments to the subgrade elevations will be made by the engineer; however, no significant adjustment is envisioned and this statement should be construed only in terms of development of a compatible cut/fill relationship for segments of the project where Yazoo clay and other similar unknown factors may influence quality of the end product.
4. All side slopes to be seeded, fertilized and mulched.

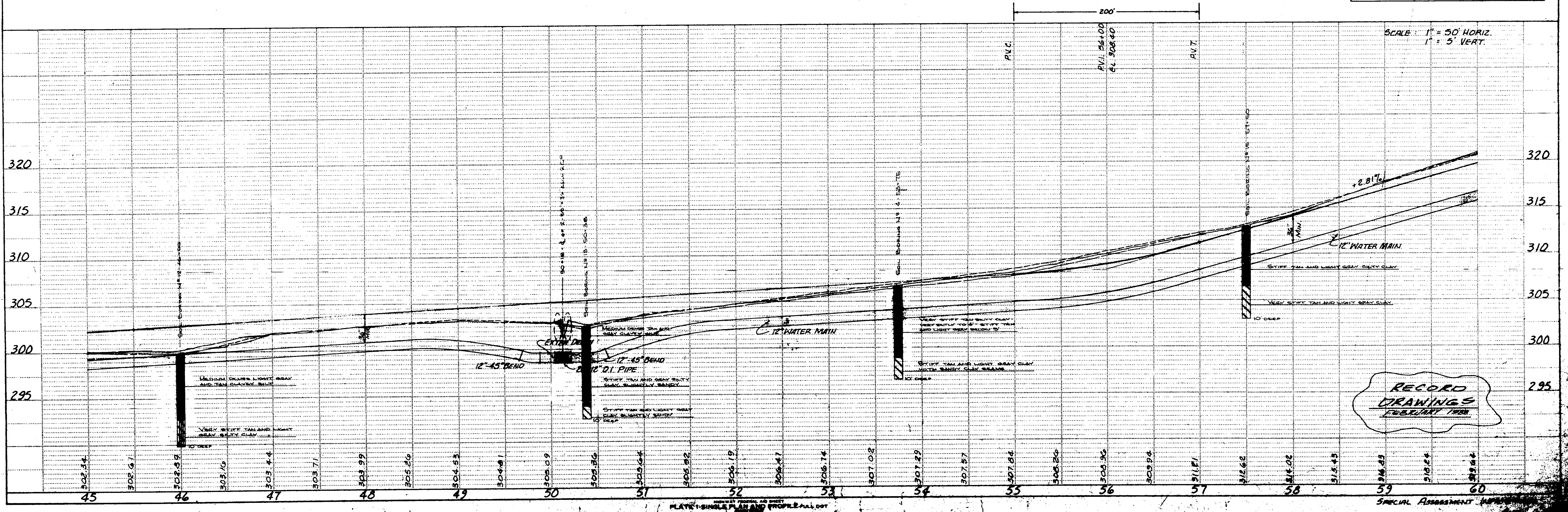
**ALTERNATE I**  
 2'-6" x 4'-58" x 36" ARCH R.C.P. @ 0.82% WITH FLARED END SECTIONS  
 FL IN 301.05  
 FL OUT 300.87  
 DIA TO AC 2  
 @ 730 CFS  
 @ 260 CFS DES.

W. W. BAILEY, ET AL

GEORGE F. WOODLIFF & H.C. BAILEY

© B.M. #24A ELEV. 305.32  
 SPINE IN SIDE 30' ELM 75' RT. STA.  
 50+38.88

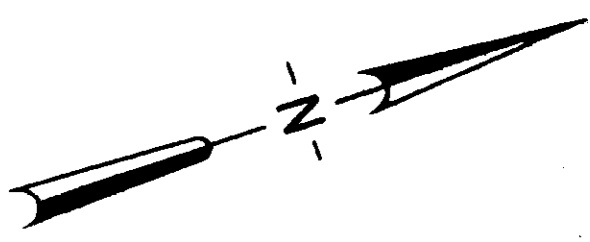
DATE	BY	REVISIONS
		1. CHECKED
		2. PLOTTED
		3. CHECKED
		4. RE-CHECKED
		5. RE-CHECKED
		6. RE-CHECKED



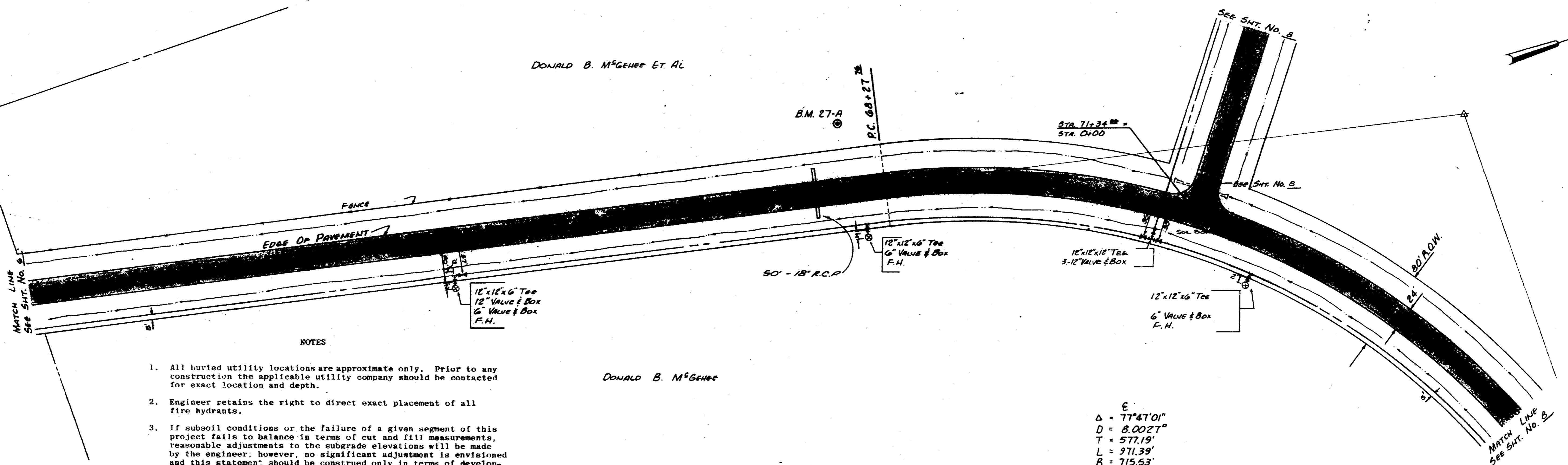
GENERAL NOTES AND SHEET  
 PLATE - SINGLE PLAN AND PROFILE  
 1/2" = 10' HORIZ.  
 1" = 5' VERT.

SPECIAL ASSIGNMENT

DONALD B. McGEHEE ET AL



DATE	
BY	
PLAN	
SURVEYED	
PLOTTED	
GRADES CHECKED	
NOTE BOOK	
BY	
DATE	



NOTES

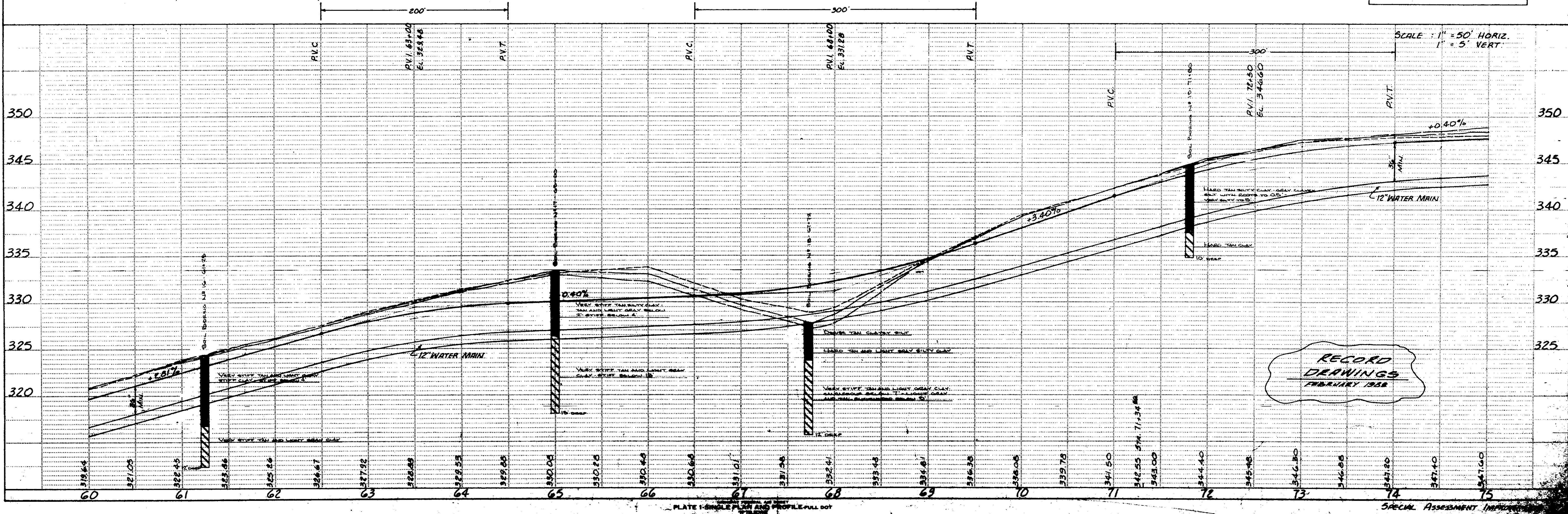
1. All buried utility locations are approximate only. Prior to any construction the applicable utility company should be contacted for exact location and depth.
2. Engineer retains the right to direct exact placement of all fire hydrants.
3. If subsoil conditions or the failure of a given segment of this project fails to balance in terms of cut and fill measurements, reasonable adjustments to the subgrade elevations will be made by the engineer; however, no significant adjustment is envisioned and this statement should be construed only in terms of development of a compatible cut/fill relationship for segments of the project where Yazoo clay and other similar unknown factors may influence quality of the end product.
4. All side slopes to be seeded, fertilized and mulched.

DONALD B. McGEHEE

$\Delta = 77^\circ 47' 01''$   
 $D = 8.0027'$   
 $T = 577.19'$   
 $L = 971.39'$   
 $R = 715.53'$

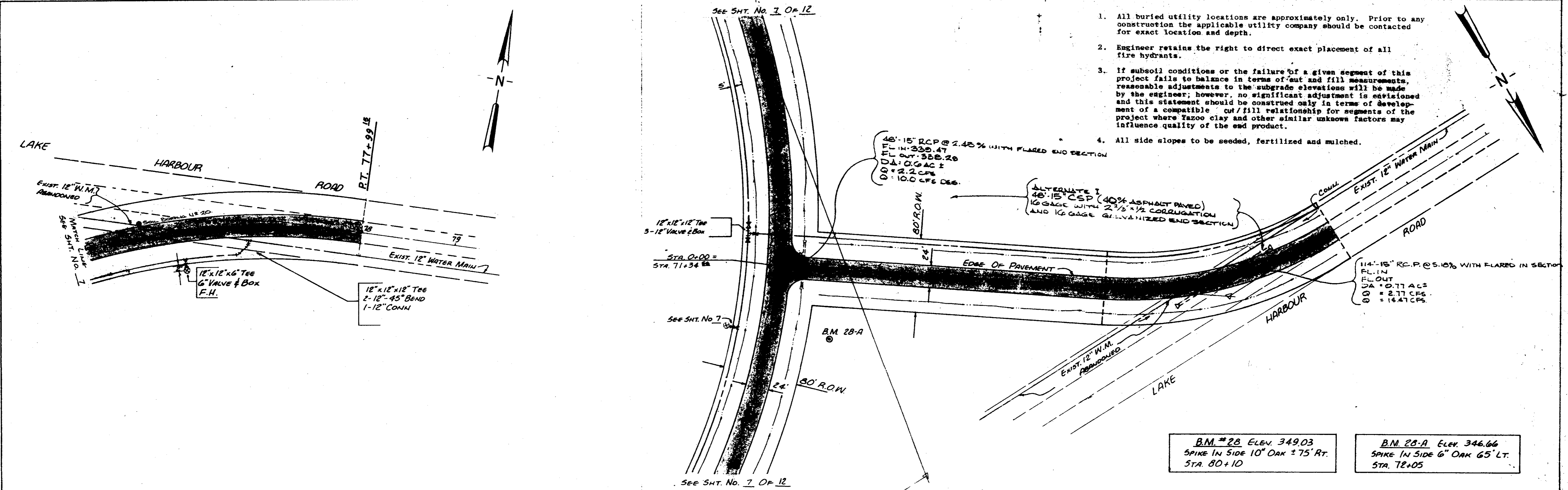
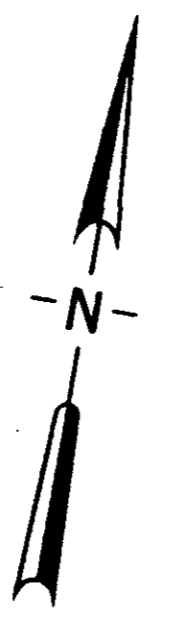
© B.M. 27A ELEV. 327.98  
 SPIKE IN SIDE 8' ELM 65' LT.  
 STA. 67+90

DATE	
BY	
PROFILE	
SURVEYED	
PLOTTED	
GRADES CHECKED	
NOTE BOOK	
BY	
DATE	



RECORD DRAWINGS  
 FEBRUARY 1958

1. All buried utility locations are approximately only. Prior to any construction the applicable utility company should be contacted for exact location and depth.
2. Engineer retains the right to direct exact placement of all fire hydrants.
3. If subsoil conditions or the failure of a given segment of this project fails to balance in terms of cut and fill measurements, reasonable adjustments to the subgrade elevations will be made by the engineer; however, no significant adjustment is envisioned and this statement should be construed only in terms of development of a compatible cut/fill relationship for segments of the project where Yazoo clay and other similar unknown factors may influence quality of the end product.
4. All side slopes to be seeded, fertilized and mulched.

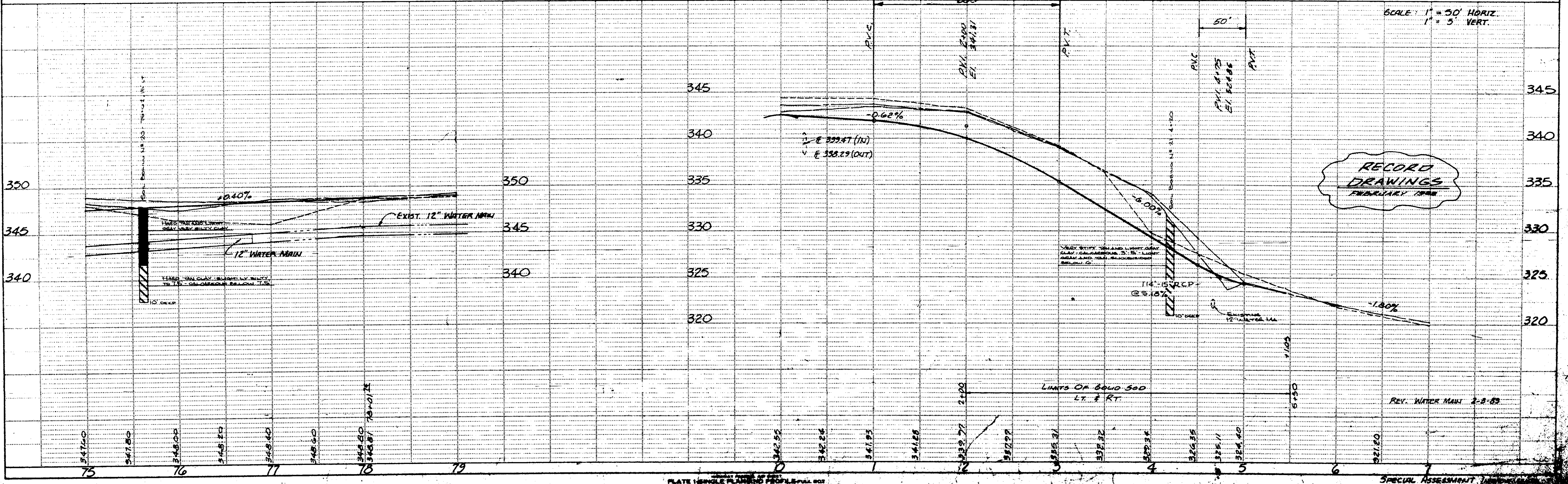


B.M. # 28. ELEV. 349.03  
SPIKE IN SIDE 10" OAK ± 75' RT.  
STA. 80+10

B.M. # 28-A. ELEV. 346.66  
SPIKE IN SIDE 6" OAK 65' LT.  
STA. 72+05

DATE	
BY	
DATE	
BY	
DATE	
BY	
DATE	
BY	
DATE	
BY	

DATE	
BY	
DATE	
BY	
DATE	
BY	
DATE	
BY	
DATE	
BY	



RECORD DRAWINGS  
FEBRUARY 1988



