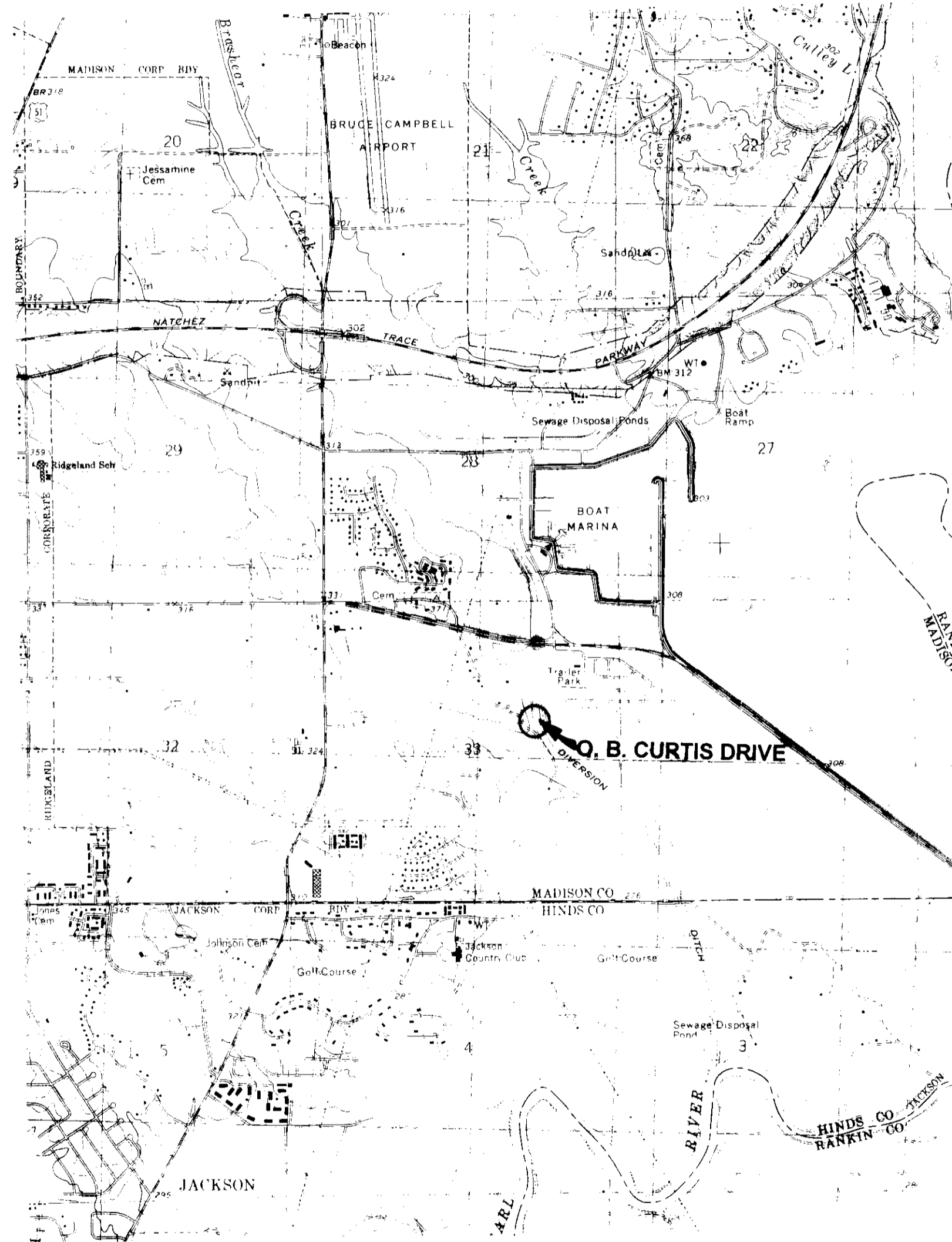


VICINITY MAP

O.B.CURTIS DRIVE CHANNEL IMPROVEMENTS PART 2 CITY OF RIDGELAND, MISSISSIPPI

INDEX TO DRAWINGS

SHEET NO.	DESCRIPTION
1	Location Map
2	Plan
3	Plan
4	Cross - Sections



SITE LOCATION MAP
T 6N, R 2E, SEC. 33

APRIL 1999

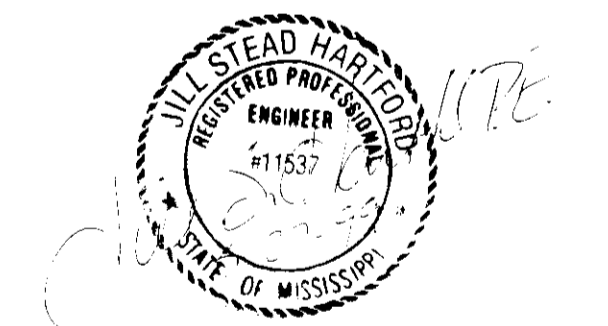
**MAYOR:
GENE F. MCGEE**

**CITY CLERK:
MIKE MCPHEARSON**

BOARD OF ALDERMAN:
WARD 1 - ANN BRAME HURD
WARD 2 - LISA WALTERS
WARD 3 - CAROLE DAVIS
WARD 4 - LARRY ROBERTS
WARD 5 - SCOTT JONES
WARD 6 - LINDA TRUNZLER
AT LARGE - GERALD STEEN

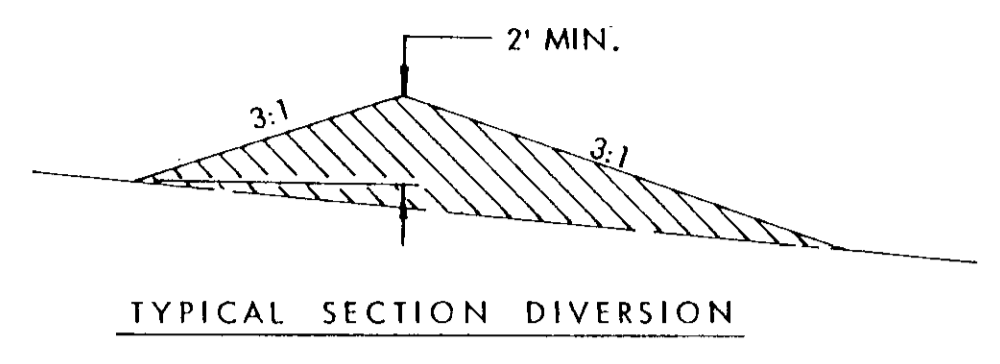
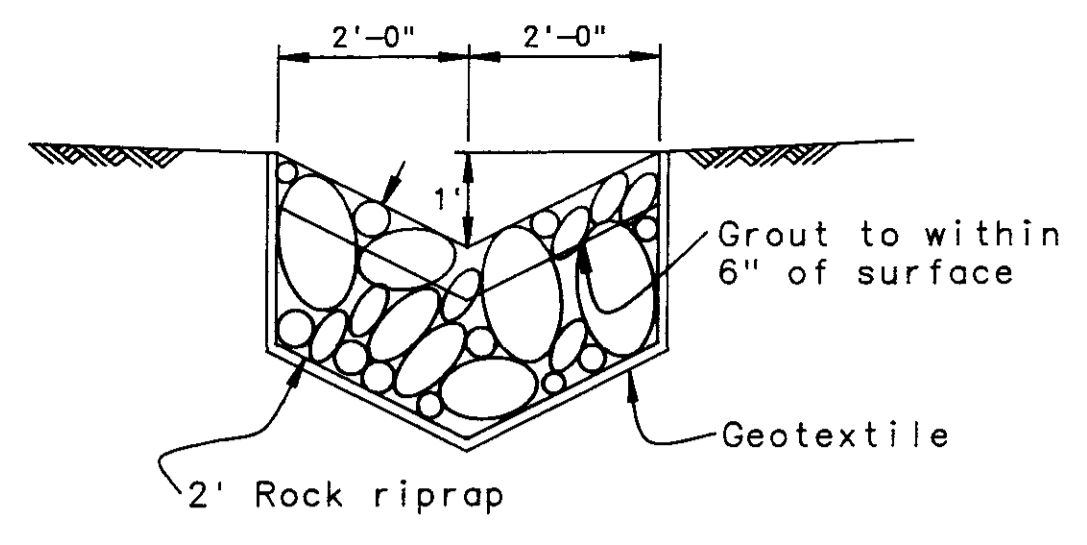
**CITY ATTORNEY:
JERRY MILLS**

**PUBLIC WORKS DIRECTOR:
SAM VINSON P.E.**



PWP-01524

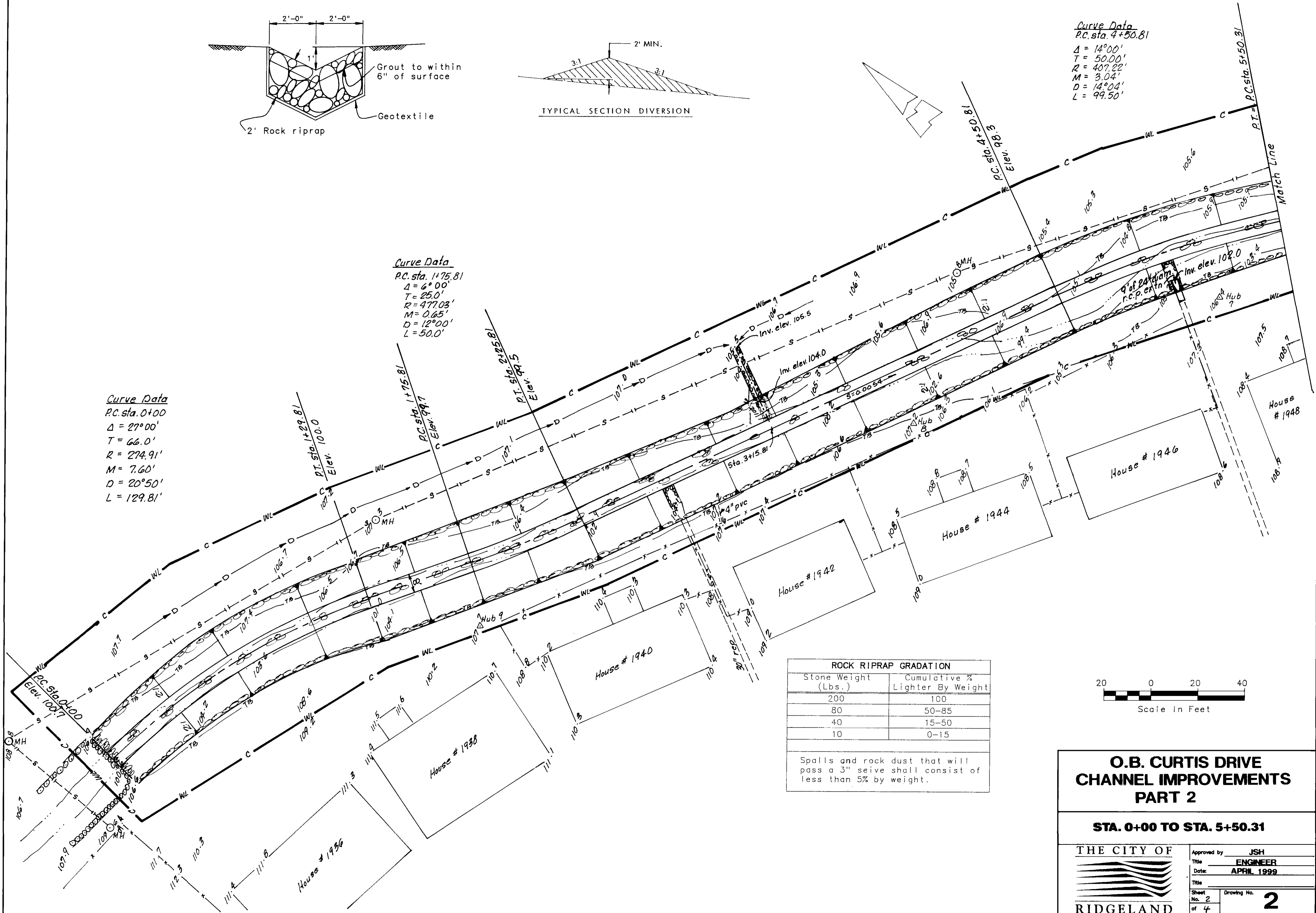




Curve Data
P.C. sta. 4+50.81
 $\Delta = 14^{\circ}00'$
 $T = 50.00'$
 $R = 407.22'$
 $M = 3.04'$
 $D = 14^{\circ}04'$
 $L = 99.50'$

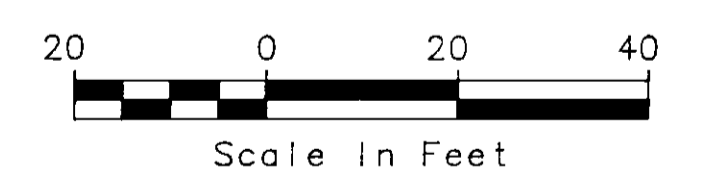
Curve Data
P.C. sta. 1+75.81
 $\Delta = 6^{\circ}00'$
 $T = 25.0'$
 $R = 477.03'$
 $M = 0.65'$
 $D = 12^{\circ}00'$
 $L = 50.0'$

Curve Data
P.C. sta. 0+00
 $\Delta = 27^{\circ}00'$
 $T = 66.0'$
 $R = 274.91'$
 $M = 7.60'$
 $D = 20^{\circ}50'$
 $L = 129.81'$



ROCK RIPRAP GRADATION	
Stone Weight (Lbs.)	Cumulative % Lighter By Weight
200	100
80	50-85
40	15-50
10	0-15

Spalls and rock dust that will pass a 3" sieve shall consist of less than 5% by weight.



O.B. CURTIS DRIVE CHANNEL IMPROVEMENTS PART 2

STA. 0+00 TO STA. 5+50.31

THE CITY OF

RIDGELAND

Approved by **JSH**
Title **ENGINEER**
Date: **APRIL 1999**

Title
Sheet No. **2**
of 4

Drawing No. **2**

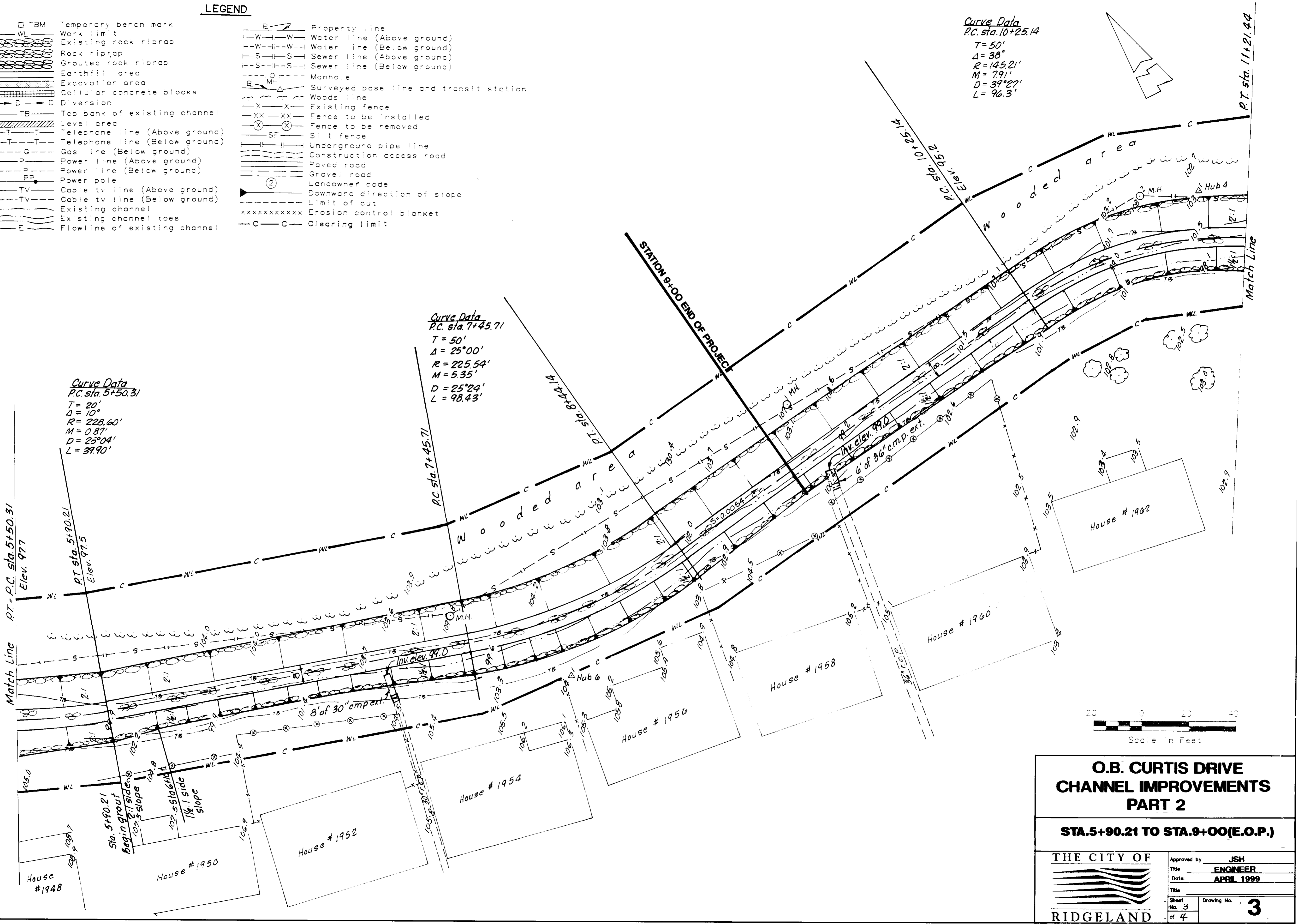
LEGEND

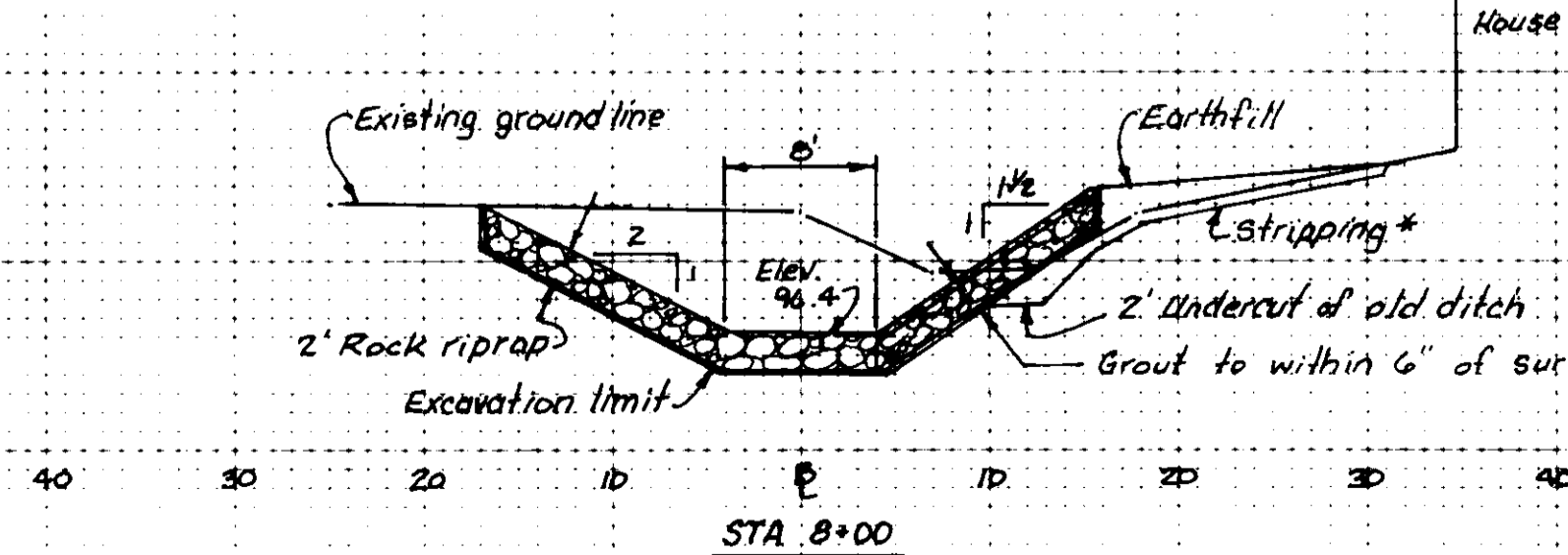
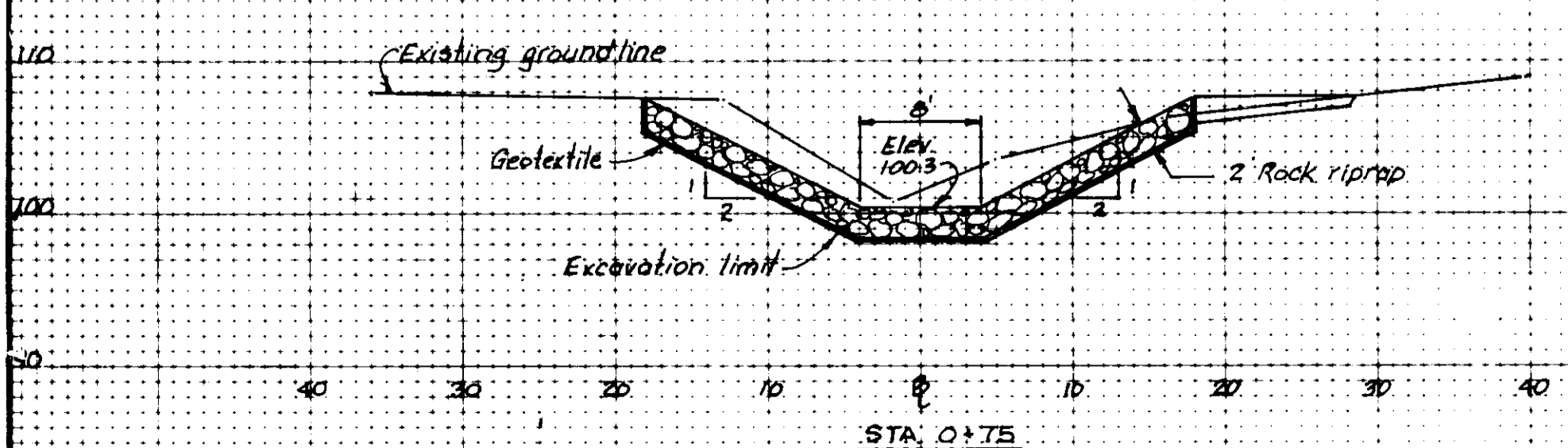
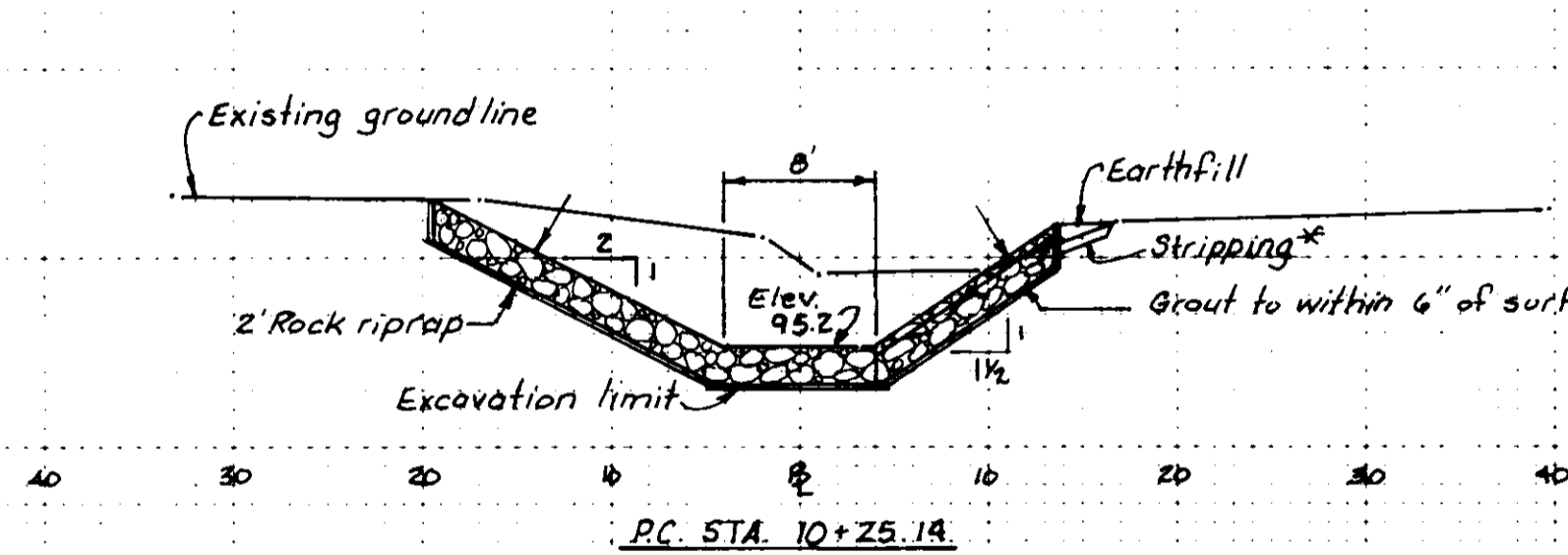
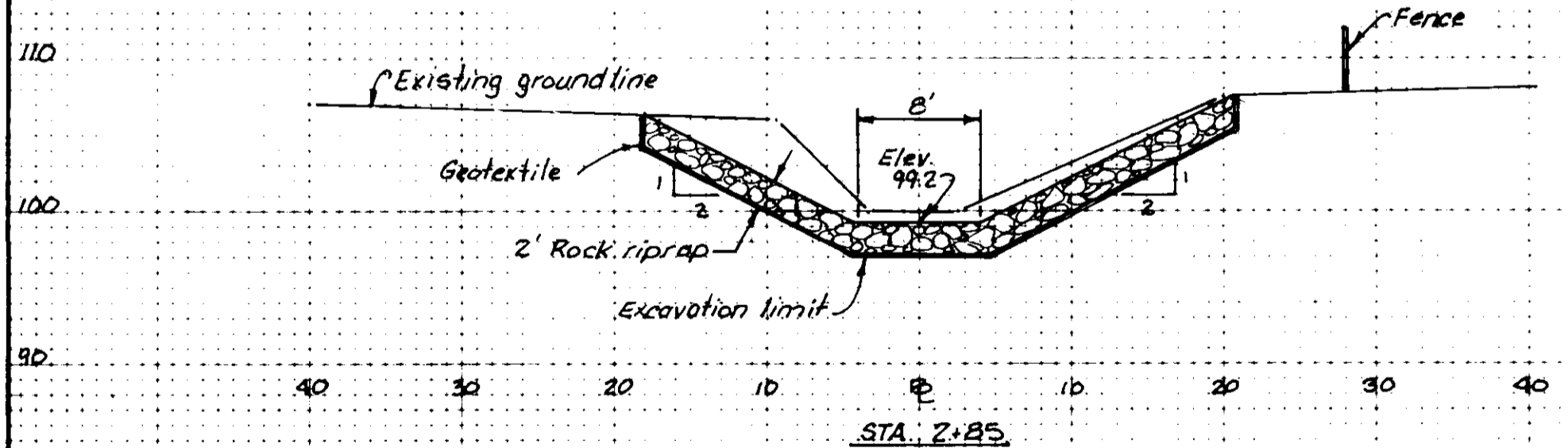
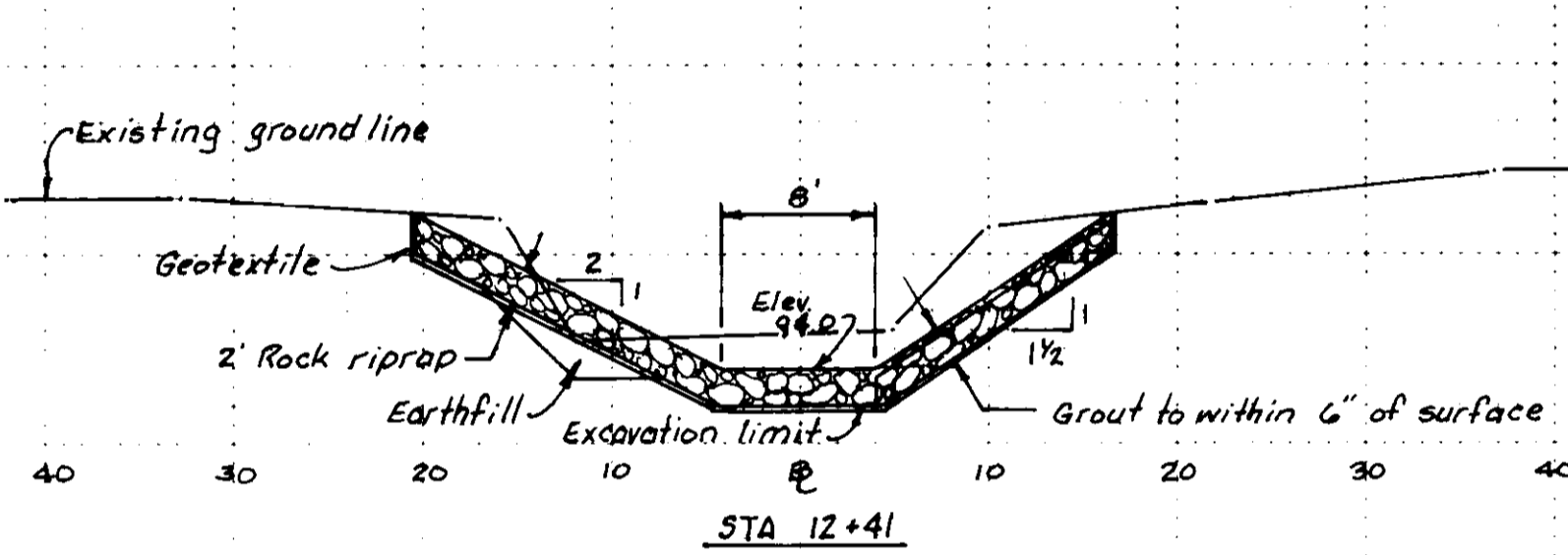
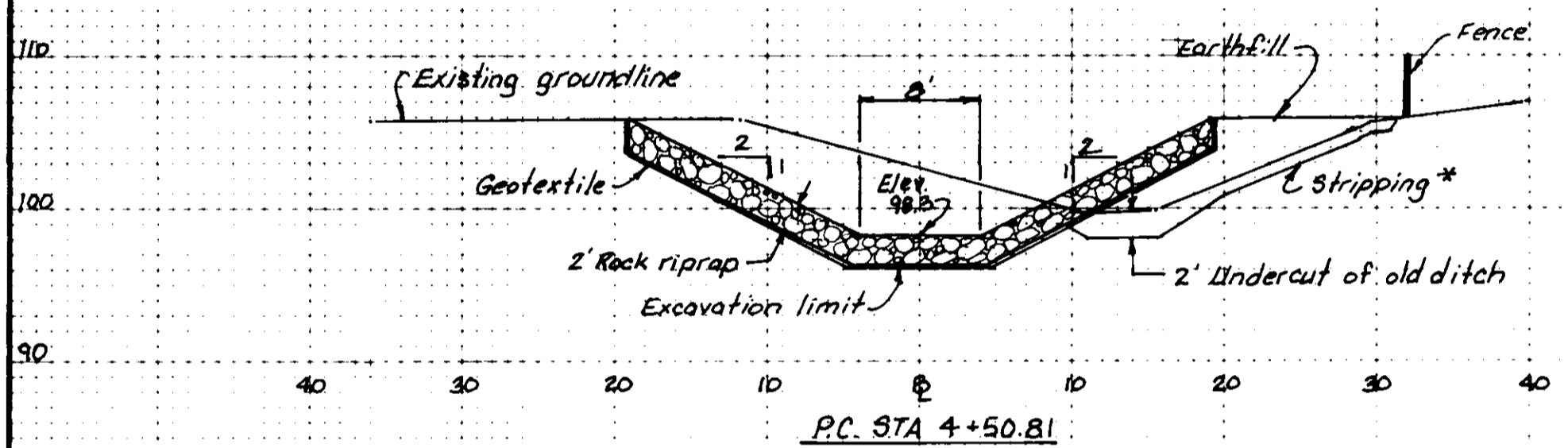
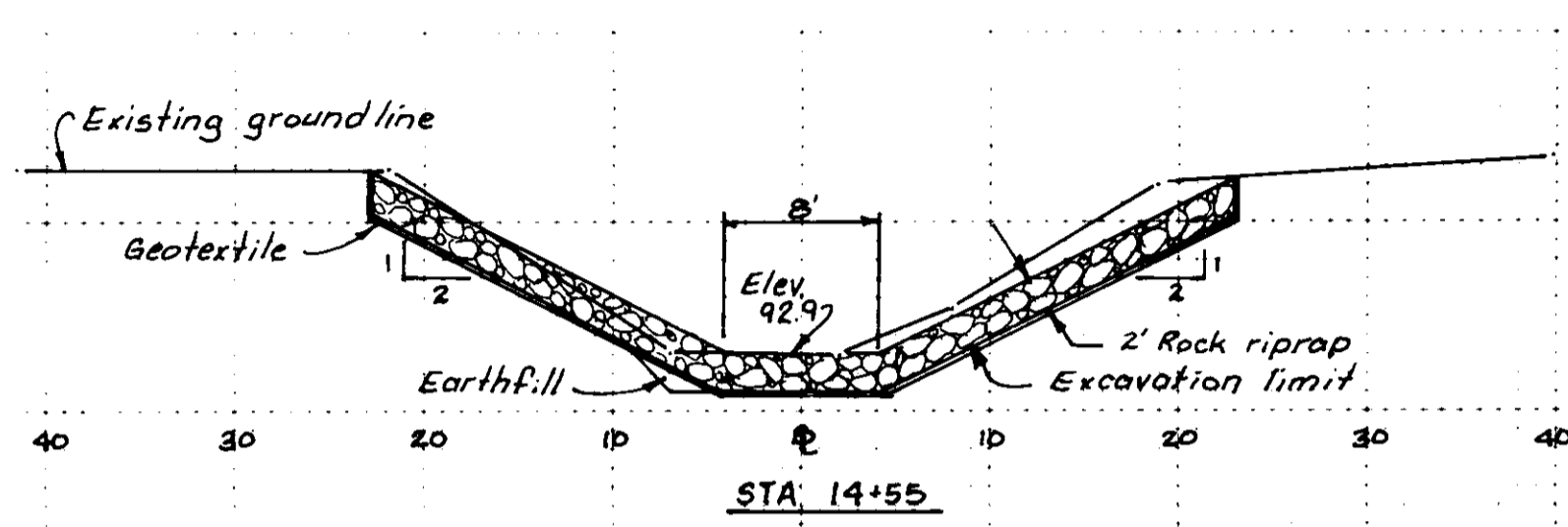
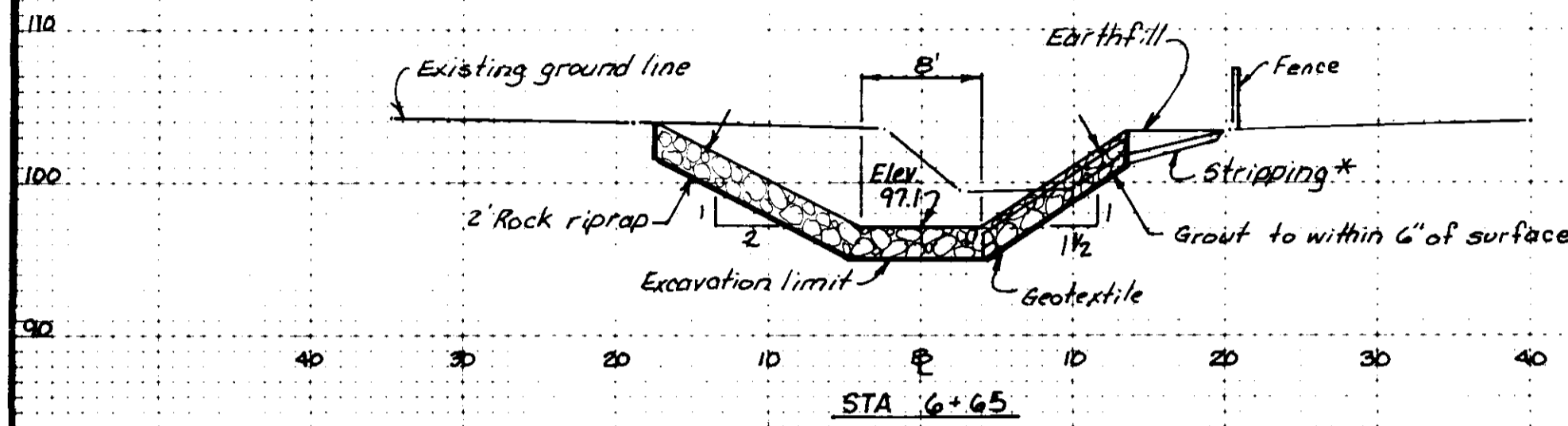
- | | | | |
|-----------|-------------------------------|-------------|--|
| □ TBM | Temporary bench mark | — P — | Property line |
| — WL — | Work limit | — W — W — | Water line (Above ground) |
| ⊖ | Existing rock riprap | — W — W — | Water line (Below ground) |
| ⊖ | Rock riprap | — S — S — | Sewer line (Above ground) |
| ⊖ | Grouted rock riprap | — S — S — | Sewer line (Below ground) |
| ⊖ | Earthfill area | — M — | Manhole |
| ⊖ | Excavation area | — S — | Surveyed base line and transit station |
| ⊖ | Cellular concrete blocks | — W — | Woods line |
| → D → | Diversion | — X — X — | Existing fence |
| — TB — | Top bank of existing channel | — XX — XX — | Fence to be installed |
| — L — | Level area | — X — | Fence to be removed |
| — T — T — | Telephone line (Above ground) | — SF — | Silt fence |
| — T — T — | Telephone line (Below ground) | — U — | Underground pipe line |
| — G — | Gas line (Below ground) | — C — | Construction access road |
| — P — | Power line (Above ground) | — P — | Paved road |
| — P — | Power line (Below ground) | — G — | Gravel road |
| — PP — | Power pole | — L — | Landowner code |
| — TV — | Cable tv line (Above ground) | — S — | Downward direction of slope |
| — TV — | Cable tv line (Below ground) | — L — | Limit of cut |
| — C — | Existing channel | xxxxxxx | Erosion control blanket |
| — C — | Existing channel toes | — C — | Clearing limit |
| — E — | Flowline of existing channel | | |

Curve Data
 P.C. sta. 10+25.14
 T = 50'
 Δ = 38°
 R = 145.21'
 M = 7.91'
 D = 39°27'
 L = 96.3'

Curve Data
 P.C. sta. 7+45.71
 T = 50'
 Δ = 25°00'
 R = 225.54'
 M = 5.35'
 D = 25°24'
 L = 98.43'

Curve Data
 P.C. sta. 5+50.31
 T = 20'
 Δ = 10°
 R = 228.60'
 M = 0.87'
 D = 25°04'
 L = 37.90'





NOTE: Stripping* = 6" open
12" woods

O.B. CURTIS DRIVE CHANNEL IMPROVEMENTS PART 2

CROSS - SECTIONS



Approved by	JSH
Title	ENGINEER
Date	APRIL 1 1998
Sheet No	4
of 4	
Drawing No	4