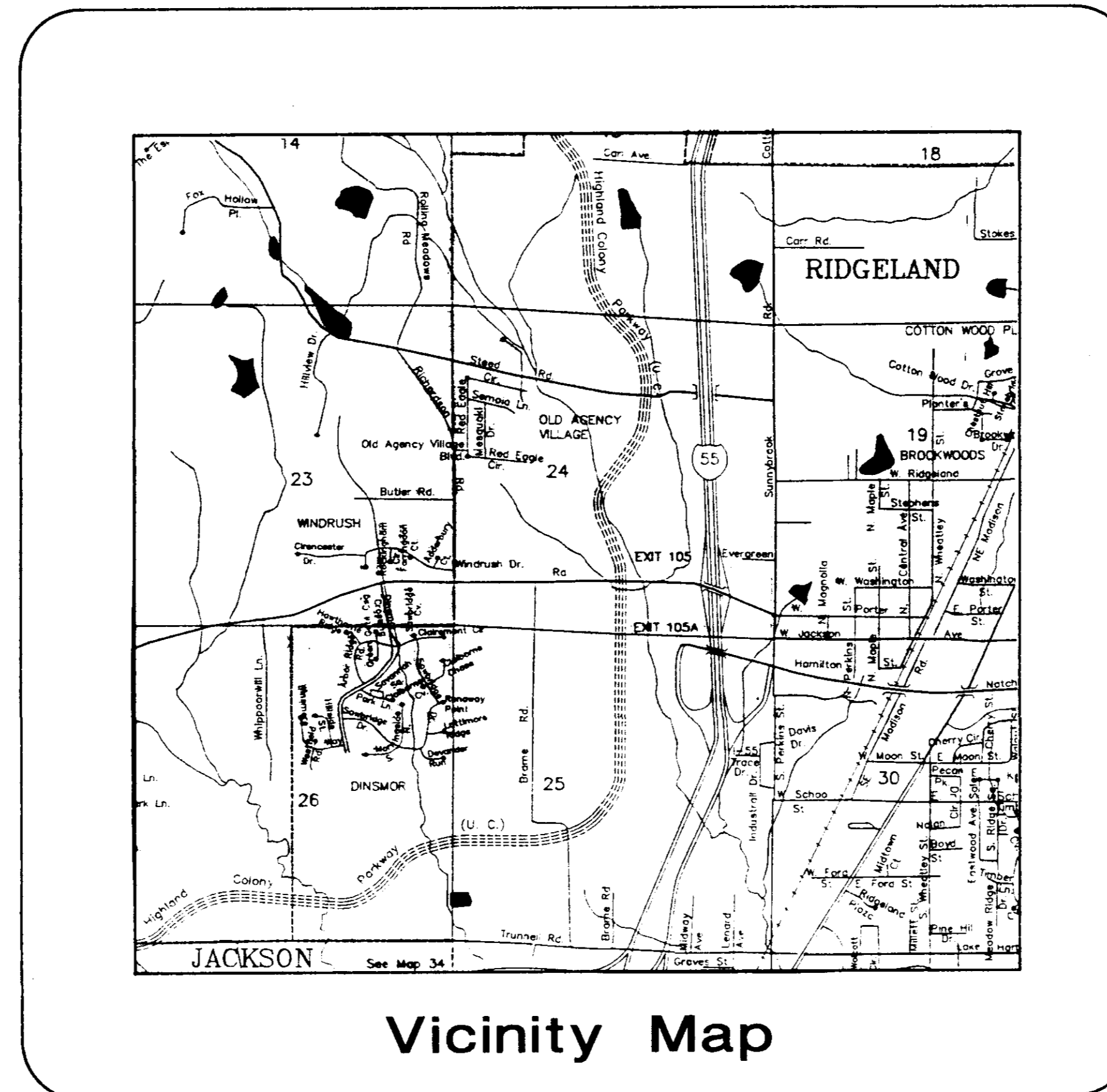


Construction Drawings

Old Agency Village, Part 2

Situated in the NW $\frac{1}{4}$ of Section 24, T7N-R1E

Ridgeland, Madison County, Mississippi



Vicinity Map

Index

<u>Sht. No.</u>	<u>Description</u>
1.	SITE PLAN - UTILITY PLAN
2.	PLAN & PROFILE: RED EAGLE CIRCLE
3.	PLAN & PROFILE: SEMOIA LANE
4.	STANDARD WATER DETAILS
5.	STANDARD SEWER DETAILS
6.	STANDARD STORM SEWER AND STREET DETAILS

Designed By: Central Mississippi Engineering, Inc.

644 Lakeland East Dr.
Flowood, Mississippi

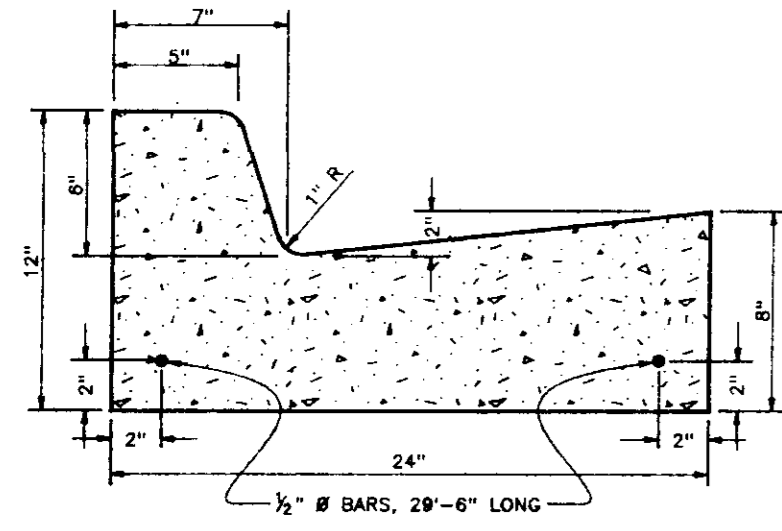
Developed By: Old Agency Development Corporation

P.O. Box 4
Clinton, Mississippi

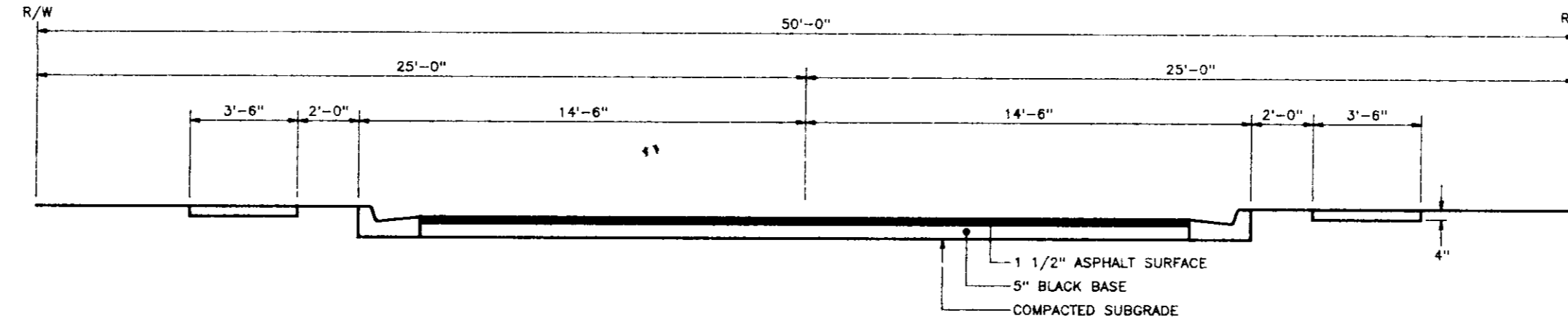
AS BUILT
13 95
[Signature]

June, 1994

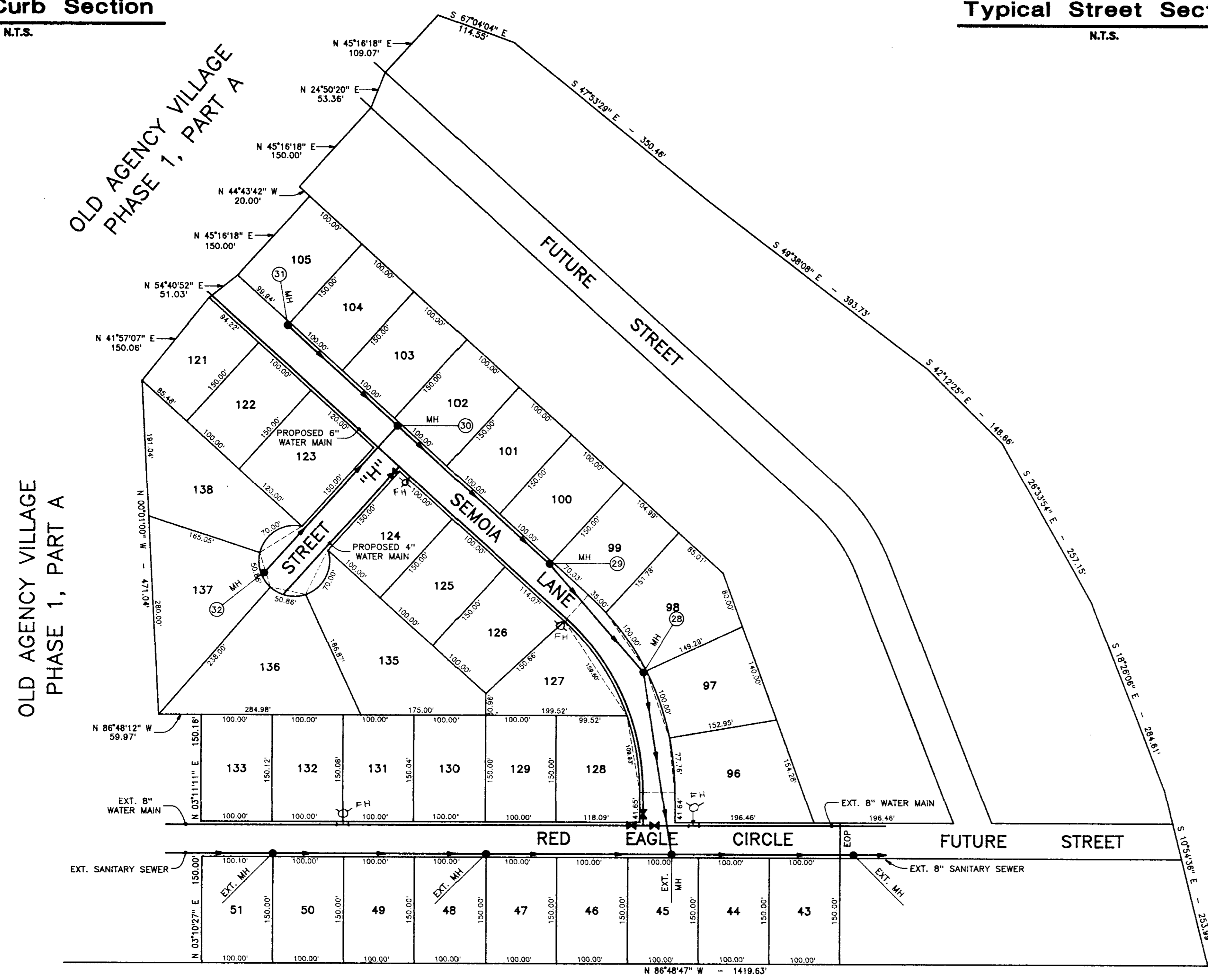
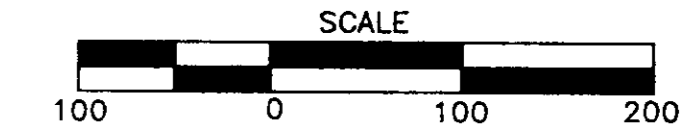
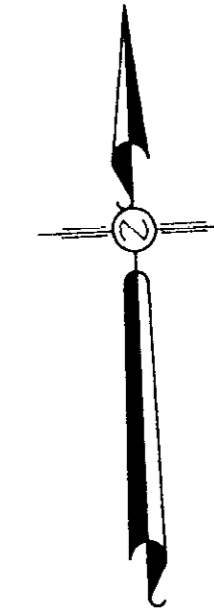
PWP-01513



Typical Curb Section
N.T.S.



Typical Street Section
N.T.S.



DEVELOPED BY:
OLD AGENCY DEVELOPEMENT CORPORATION
P.O. BOX 4
CLINTON, MISSISSIPPI

SITE PLAN - UTILITY PLAN
OLD AGENCY VILLAGE, PART 2
NW 1/4 OF SECTION 24, T7N-R1E
RIDGELAND, MADISON COUNTY, MISSISSIPPI

AS BUILT
13 95
[Signature]

1. Original design and planning by Dwayne Sharp & Associates
2. All construction to be performed to the requirements of the City of Ridgeland, Mississippi

Revision:

Central Mississippi Engineering
644 Lakeland East Dr. Flowood, Mississippi 39208

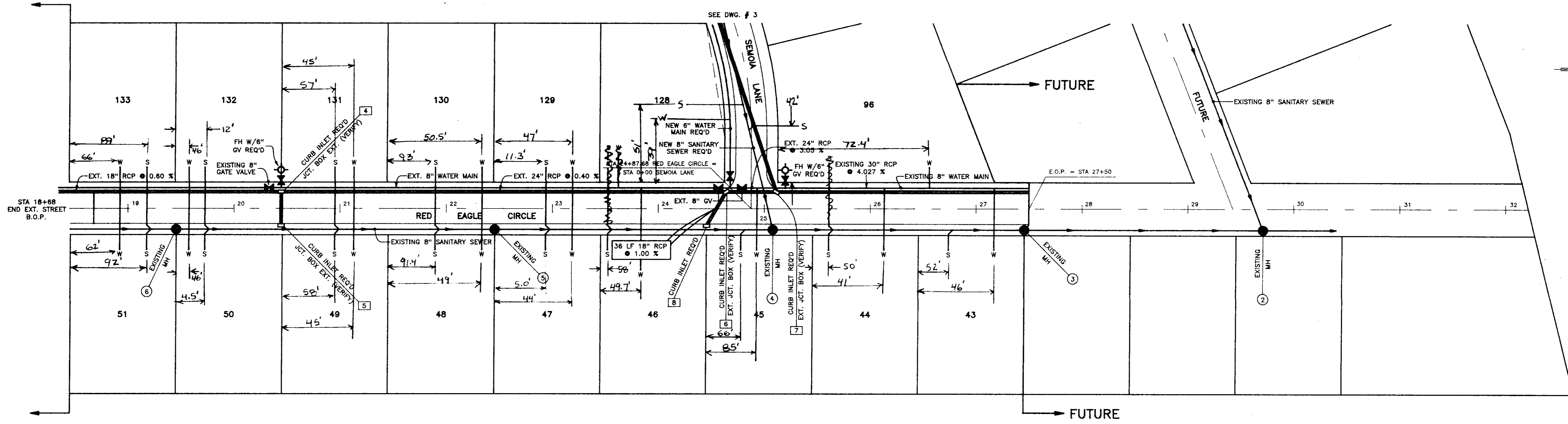
Old Agency Village
Part 2

Designed: KARL P. LONG
Drawn: C.M. BURRESS
Approved: KARL P. LONG
Date: JUNE 7, 1994

Sheet No.

--

EXISTING PHASE 1-A



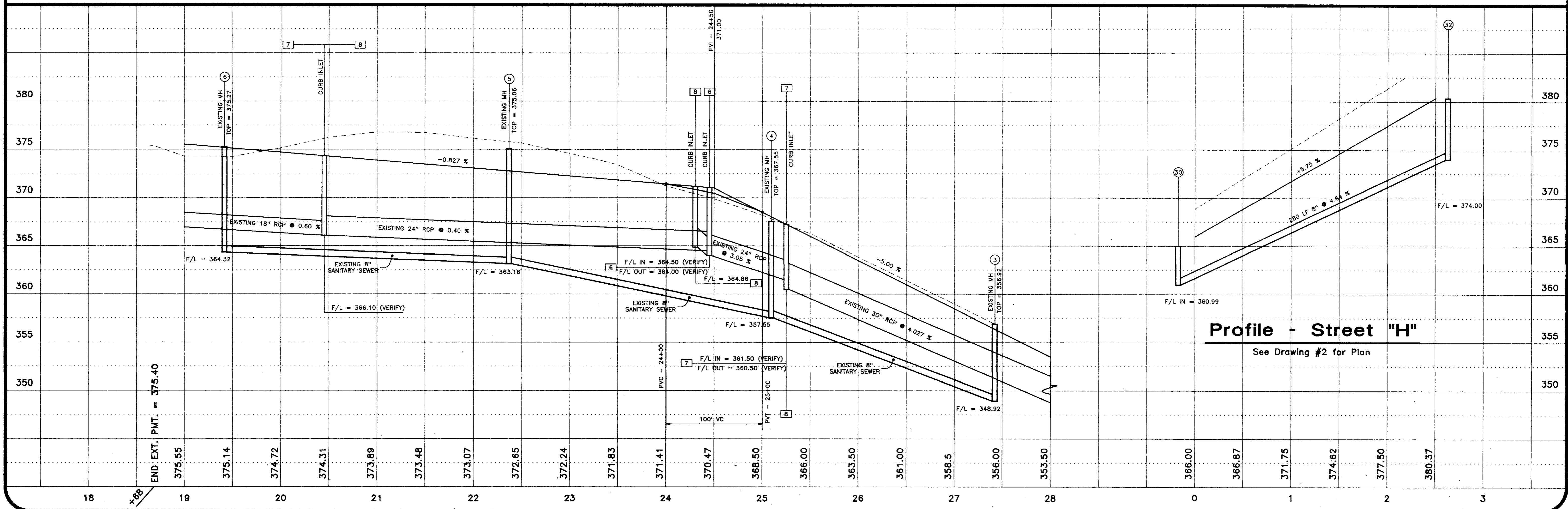
Plan & Profile - Red Eagle Circle

Scale:
 Plan : 1" = 50'
 Profile : 1" = 50' Horizontal
 : 1" = 5' Vertical

NOTES:

1. - ORIGINAL DESIGN BY DWAYNE SHARP AND ASSOCIATES IN 1989. THIS PLAN REFLECTS GRADING CHANGES ONLY.
2. - WATER AND SEWER MAINS ARE EXISTING THIS STREET. CONTRACTOR TO TAP EACH MAIN AND INSTALL SERVICES FOR EACH LOT.
3. - STORM SEWER IS EXISTING THIS STREET. JUNCTION BOXES ARE CONSTRUCTED AT INLETS. CONTRACTOR TO REMODEL EACH BOX TO BE CURB INLET.

AS BUILT
 1-3-95
 [Signature]



Profile - Street "H"
 See Drawing #2 for Plan

Revisions

Central Mississippi Engineering
 644 Lakeland East Dr. Flowood, Mississippi 39208

Old Agency Village
 Part 2

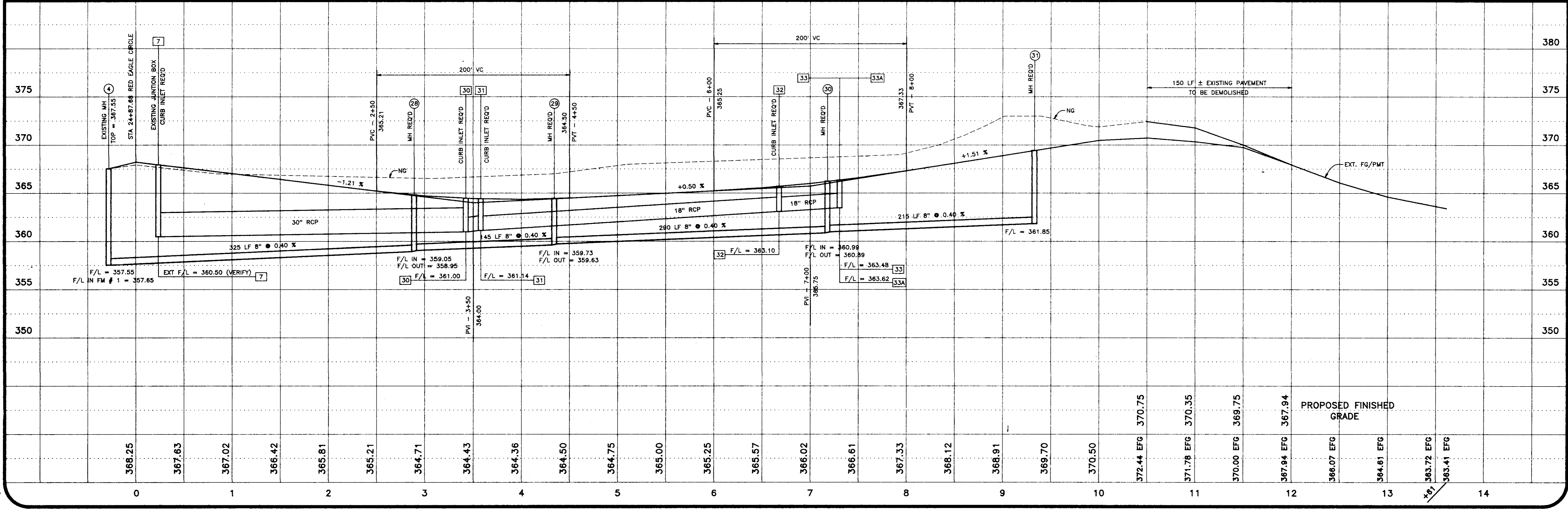
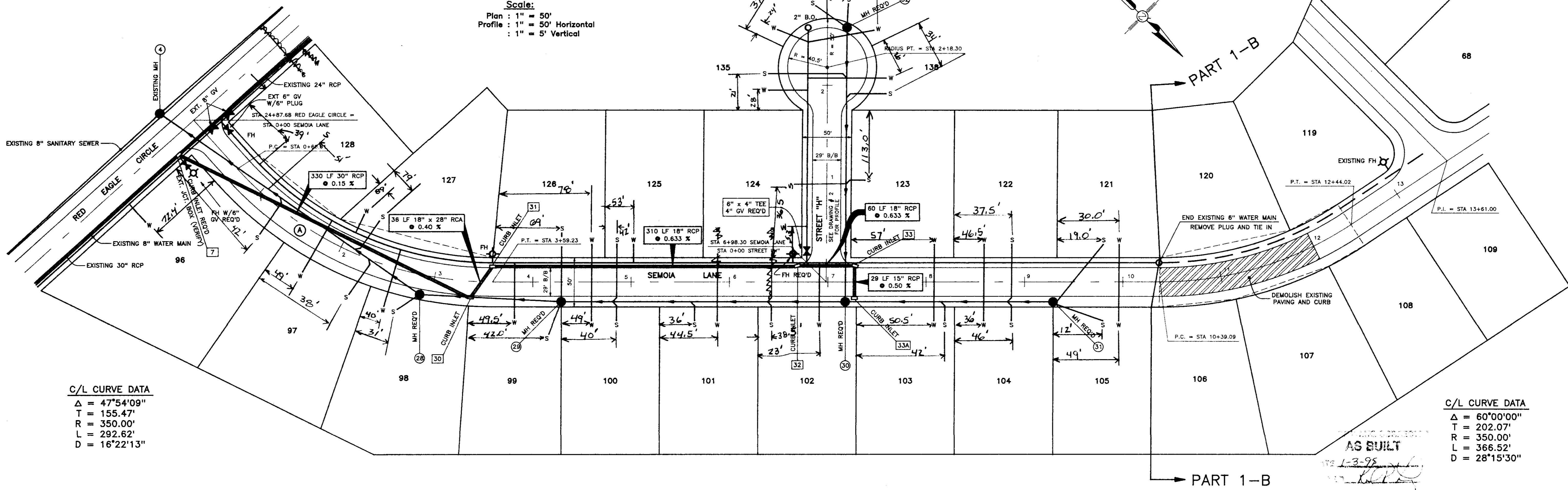
Designed: KARL P. LONG
 Drawn: C.M. BURGESS
 Approved: KARL P. LONG
 Date: JUNE 7, 1994

Sheet No.
 2

NOTE: ORIGINAL DESIGN BY DWAYNE SHARP AND ASSOCIATES IN 1989. THIS PLAN REFLECTS REVISIONS TO GRADING AND DRAINAGE ONLY.

Plan & Profile - Semoia Lane

Scale:
 Plan : 1" = 50'
 Profile : 1" = 50' Horizontal
 : 1" = 5' Vertical



Revision:

Central Mississippi Engineering
 644 Lakeland East Dr. Flowood, Mississippi 39208

Old Agency Village
 Part 2

Designed: KARL P. LONG
 Drawn: C.M. BURGESS
 Approved: KARL P. LONG
 Date: JUNE 7, 1994

Sheet No.
 3