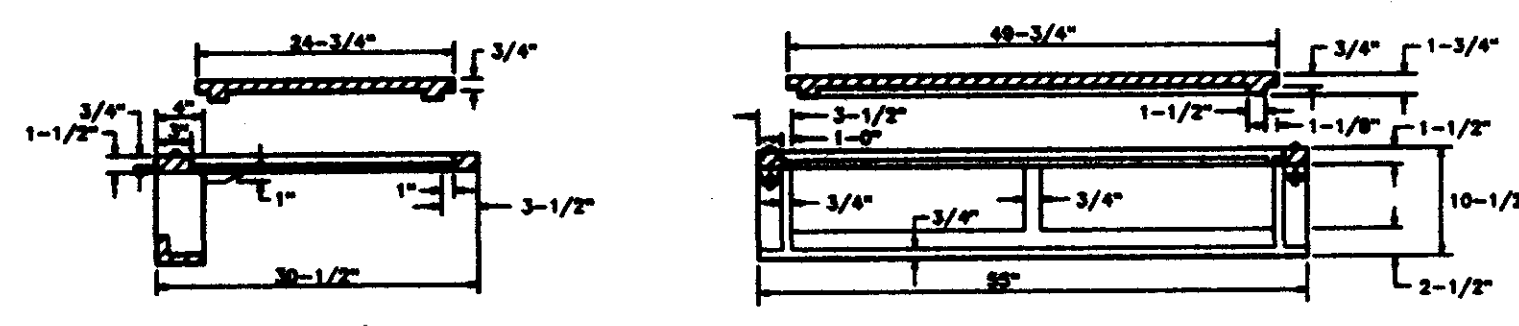
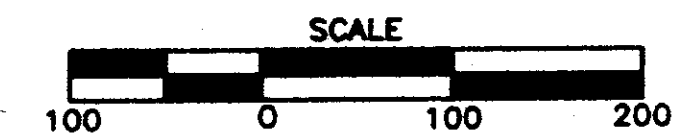
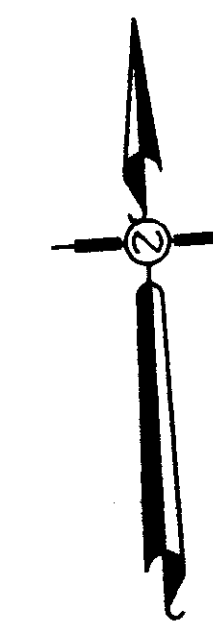
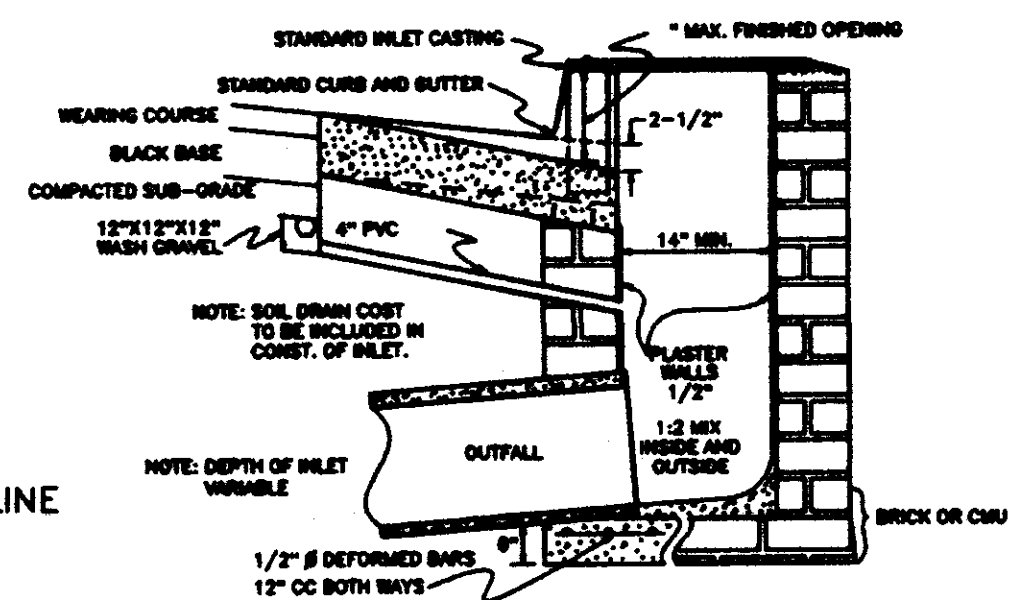


Typical Curb Section
N.T.S.



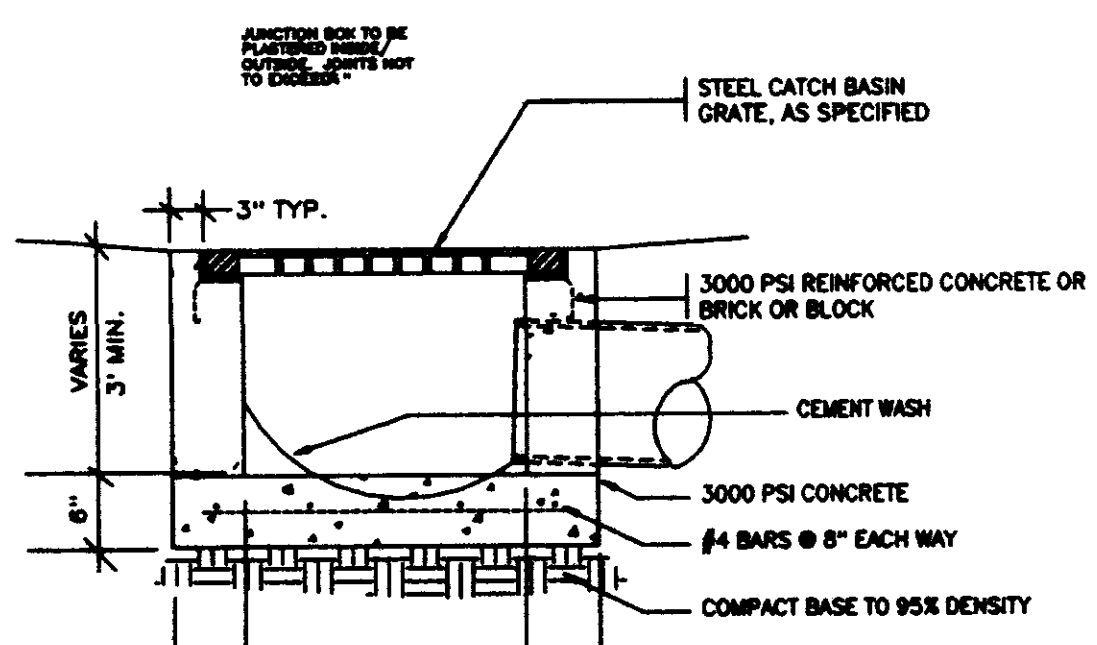
STANDARD CURB INLET CASTING

NO SCALE



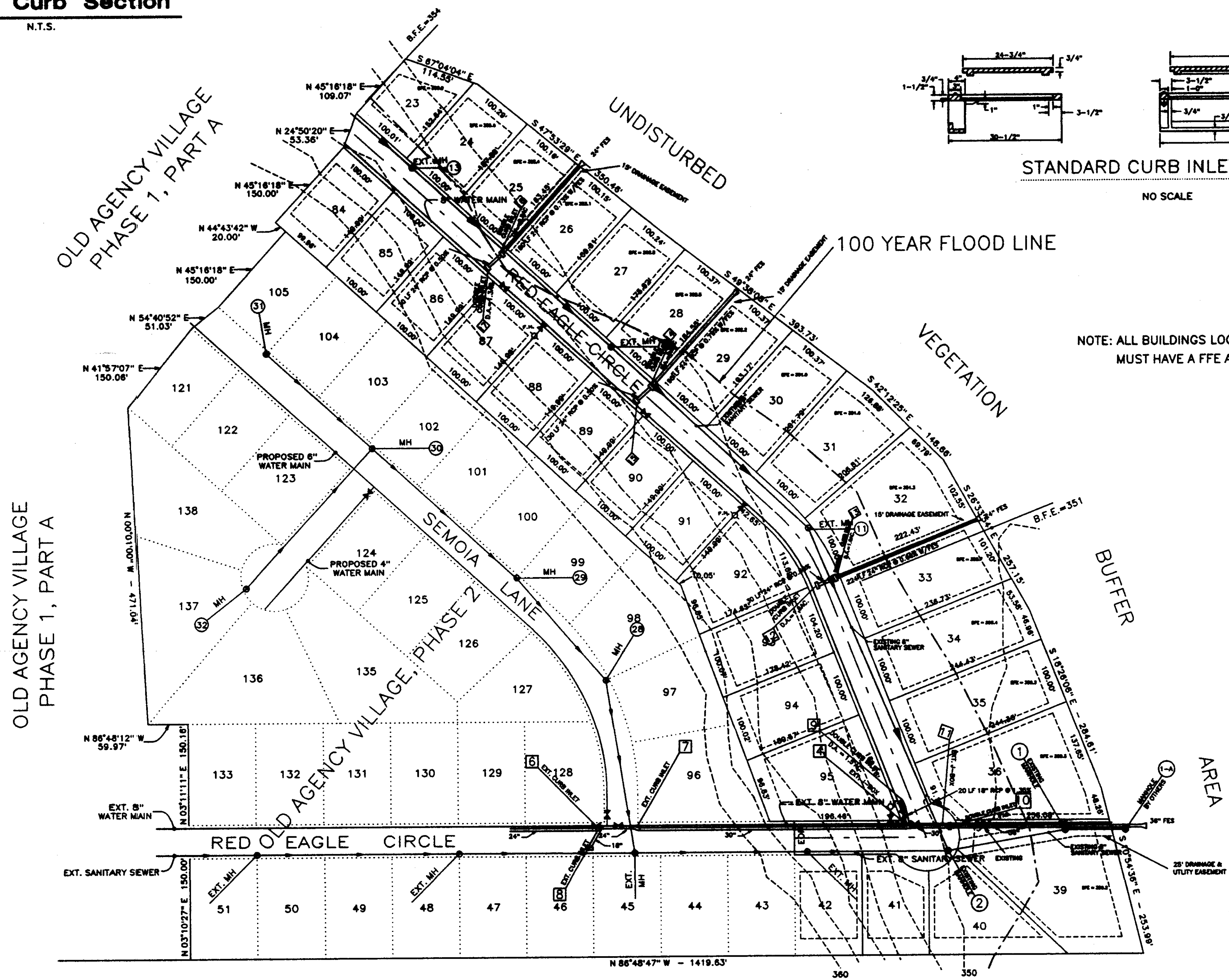
SECTION OF STANDARD CURB INLET

NO SCALE

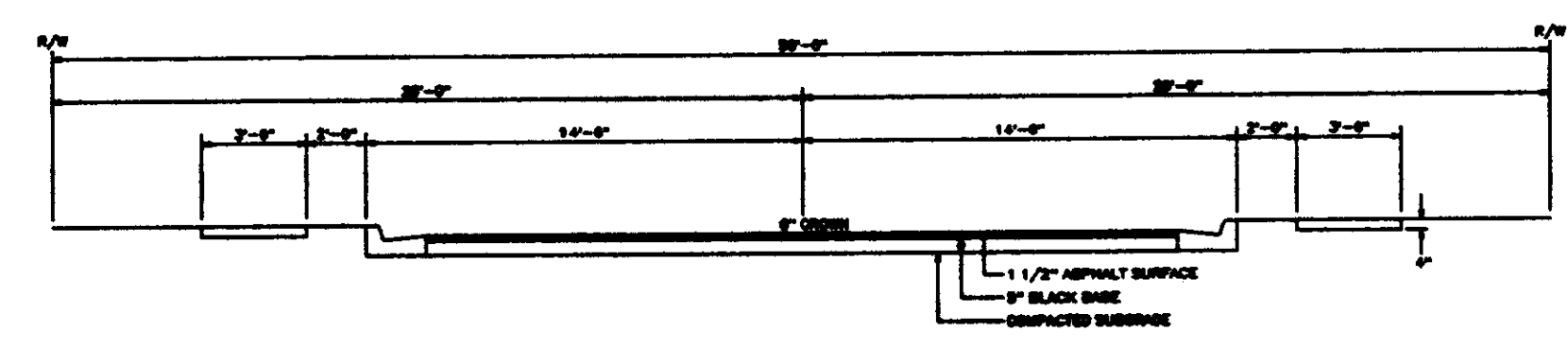


CATCH BASIN DETAIL

N.T.S.



NOTE: ALL BUILDINGS LOCATED WITHIN THE 100 YEAR FLOOD LINE MUST HAVE A FFE AT LEAST 1' ABOVE THE BFE.



Typical Street Section
N.T.S.

This property is situated in Zone "X" and Zone "AE" according to Map No. 28089C0320 D dated April 15, 1994.

- Original design and planning by Dwayne Sharp & Associates
- All construction to be performed to the requirements of the City of Ridgeland, Mississippi
- All sewer mains and manholes are existing.
- All sewer manholes below BFE will have sealing lids.

SETBACK REQUIREMENTS

- FRONT - 25'
- REAR - 25'
- SIDE - 8'
- CORNER LOT SIDE STREET - 25'

SITE PLAN - UTILITY PLAN

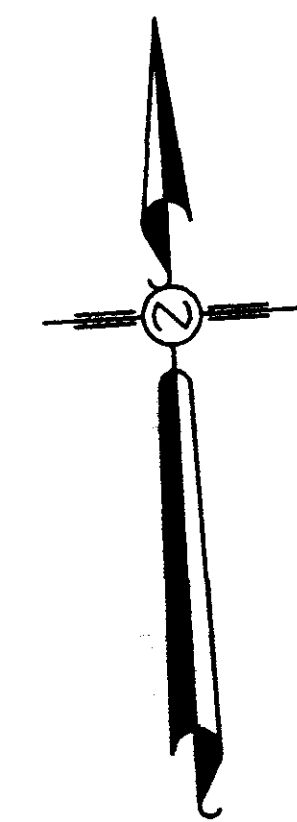
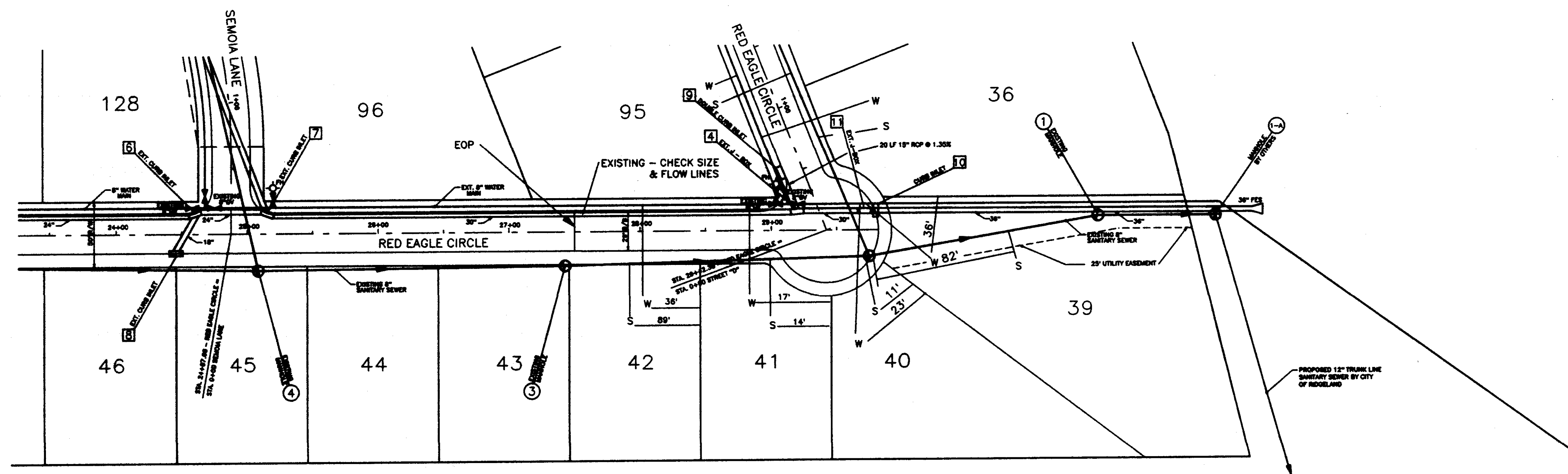
OLD AGENCY VILLAGE, PART 3
NW 1/4 OF SECTION 24, T7N-R1E
RIDGELAND, MADISON COUNTY, MISSISSIPPI

Revised: 5/20/00 EASEMENTS 9/26/00 DRAINAGE
4/13/00 CONTOURS 7/19/00 COMMENTS
5/22/00 COMMENTS 9/10/01 AS BUILT

CENTRAL MISSISSIPPI ENGINEERING, INC.
115 EAST MAIN STREET FLORENCE, MISSISSIPPI

OLD AGENCY VILLAGE
PHASE 3
MADISON COUNTY, MISSISSIPPI

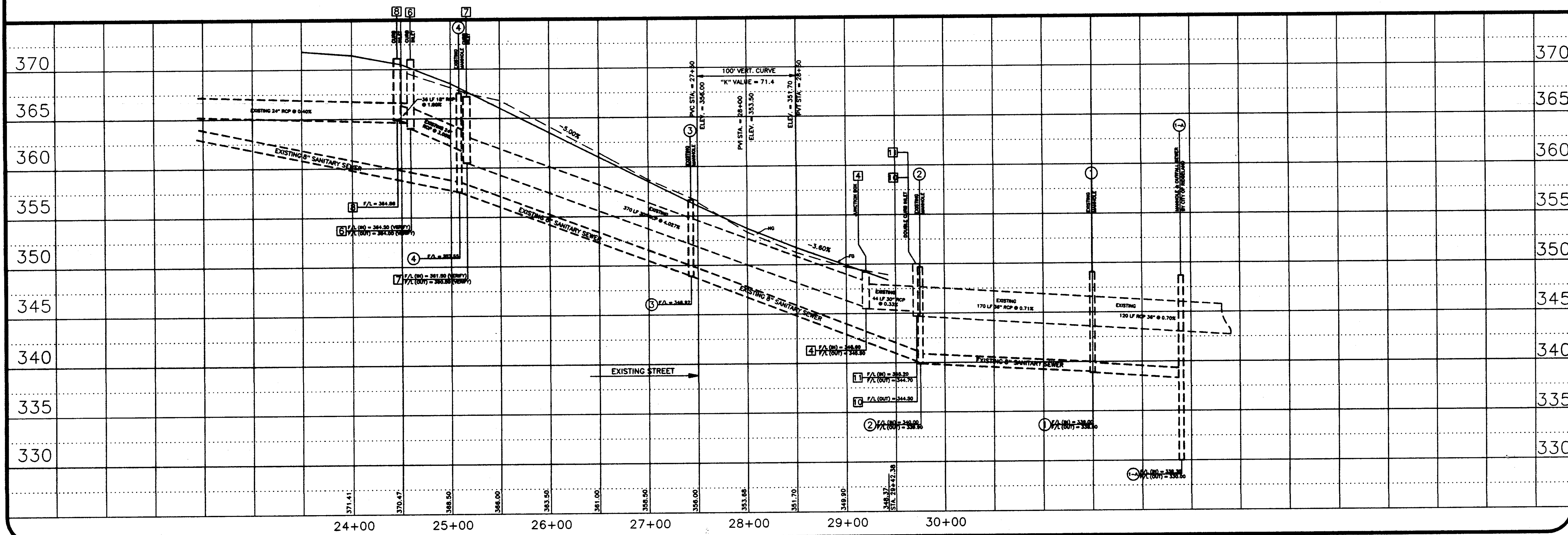
Prepared: KARL P. LONG
Drawn: R.J. MILLETTE
Approved: KARL P. LONG
Date: FEB. 14, 2000



PLAN & PROFILE - RED EAGLE CIRCLE

SCALE:
 PLAN: 1" = 50'
 PROFILE: 1" = 50' HORIZONTAL
 : 1" = 5' VERTICAL

ALL SANITARY SEWER LINES & MANHOLES ARE EXISTING.



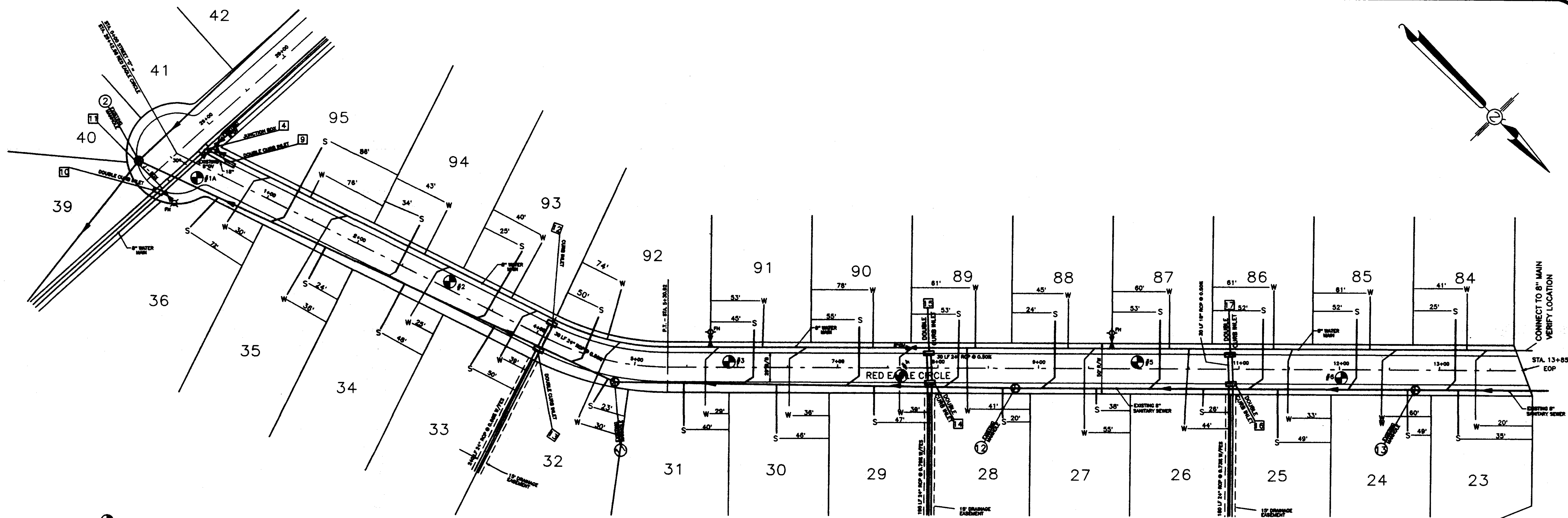
3/23/00 F.G.
 5/22/00 COMMENTS
 9/28/00 DRAINAGE

Central Mississippi Engineering
 115 EAST MAIN STREET
 FLORENCE, MISSISSIPPI

OLD AGENCY VILLAGE
 PHASE 3
 MADISON COUNTY, MISSISSIPPI

Designed by: R.J. MILLETTE
 Drawn by: R.J. MILLETTE
 Approved by: KARL P. LONG
 Date: FEBRUARY, 2000

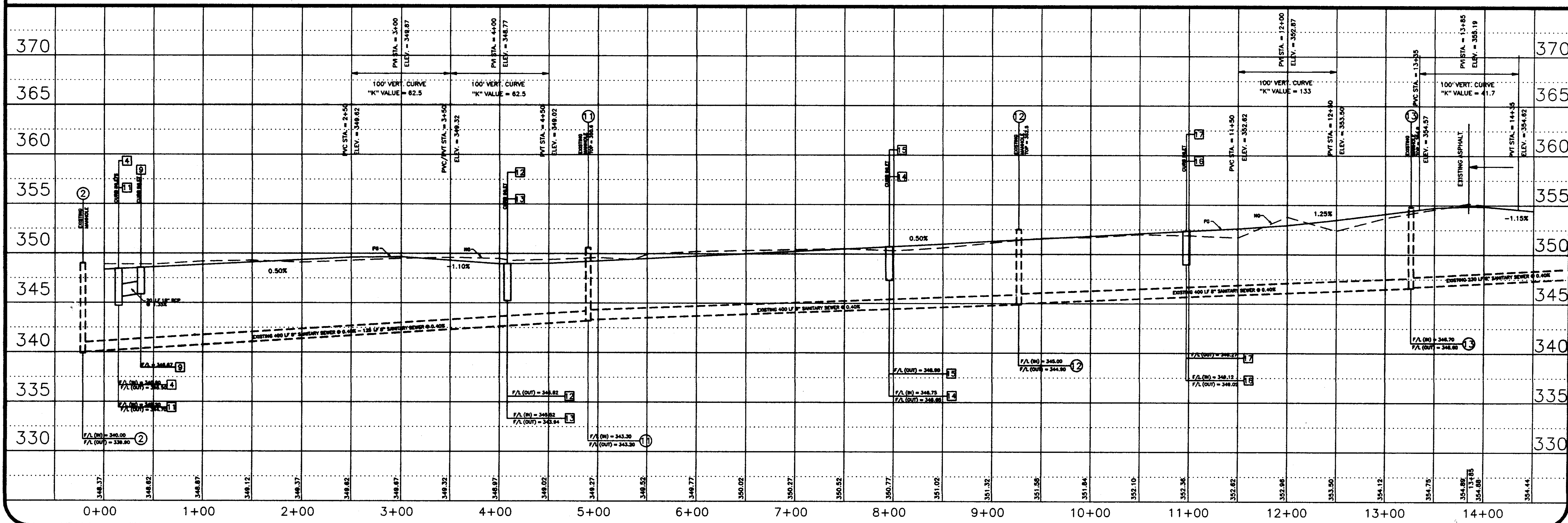
Sheet No.
 2



C/L CURVE DATA
 Δ = 26°17'36"
 T = 64.21'
 P = 275.00'
 L = 126.18'
 D = 20°50'05"

PLAN & PROFILE - RED EAGLE CIRCLE

SCALE:
 PLAN: 1" = 50'
 PROFILE: 1" = 50' HORIZONTAL
 : 1" = 5' VERTICAL



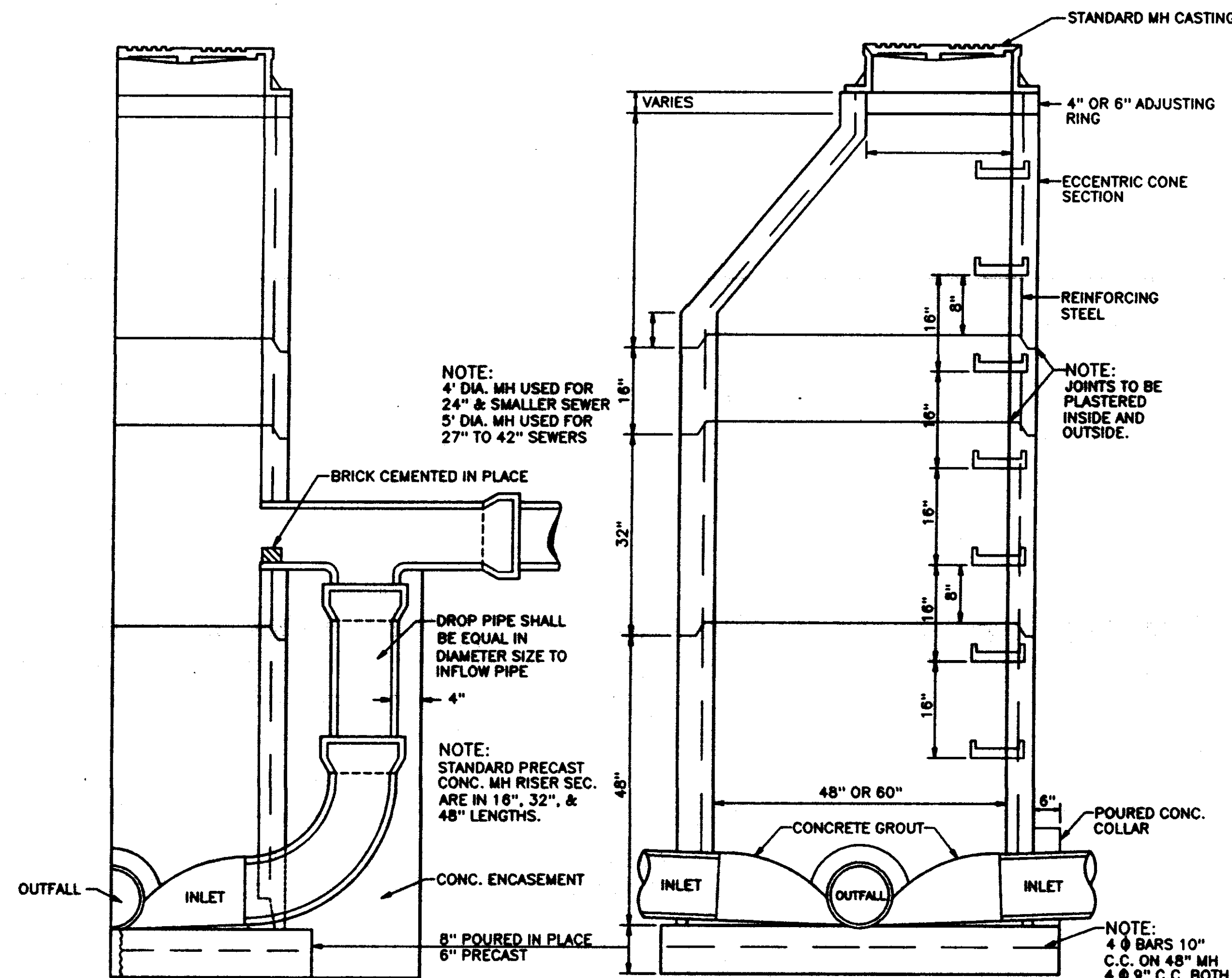
3/22/00 F.G.
 5/22/00 COMMENTS
 6/28/00 DRAINAGE

Central Mississippi Engineering
 115 EAST MAIN STREET
 FLORENCE, MISSISSIPPI

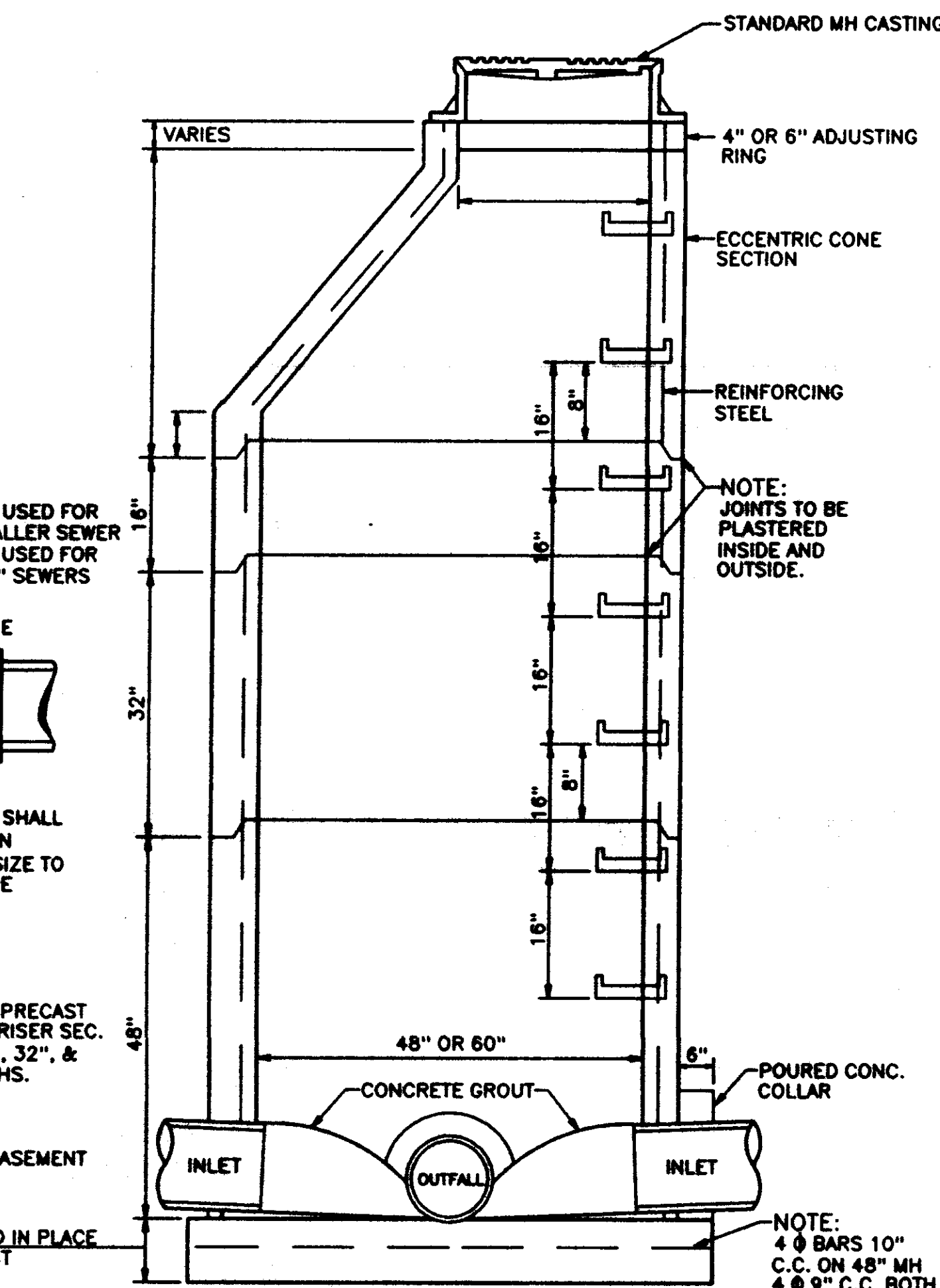
OLD AGENCY VILLAGE
 PHASE 3
 MADISON COUNTY, MISSISSIPPI

Designed: R.J. MILLETTE
 Drawn: R.J. MILLETTE
 Approved: KARL P. LONG
 Date: FEBRUARY, 2000

Sheet No.
 3



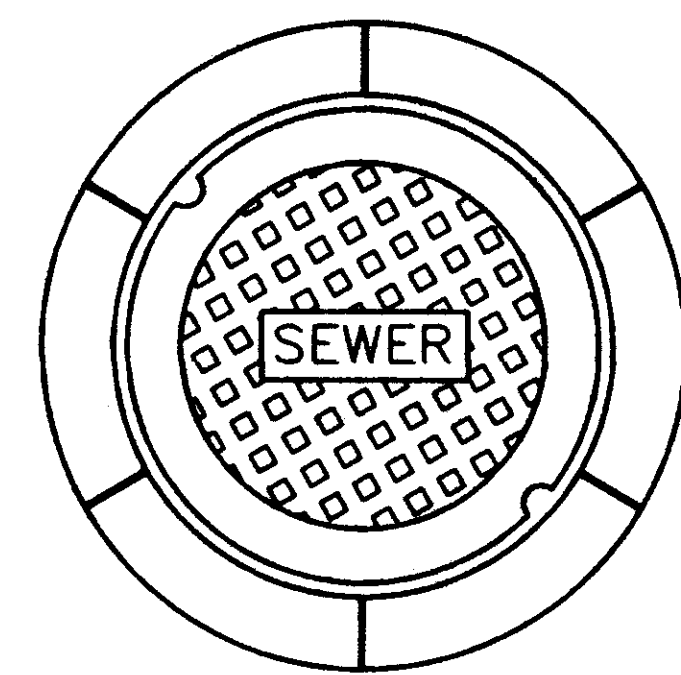
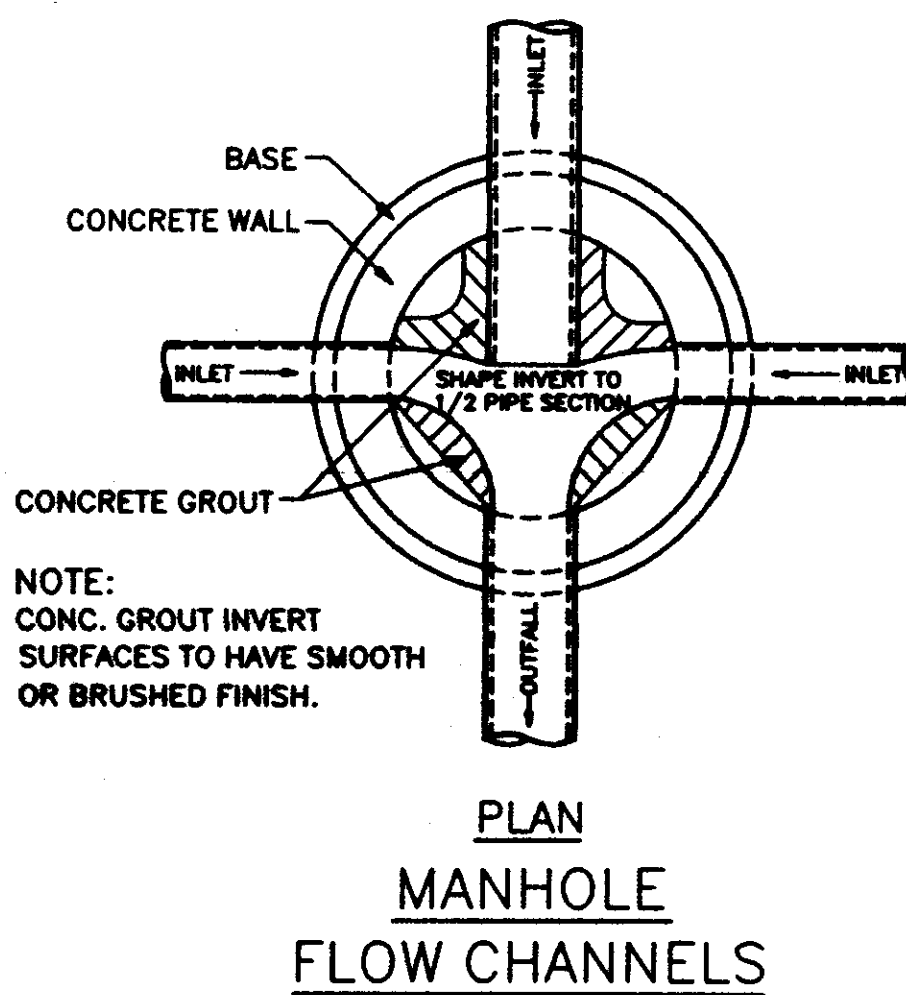
SECTION OF PRECAST CONCRETE WITH DROP CONNECTION



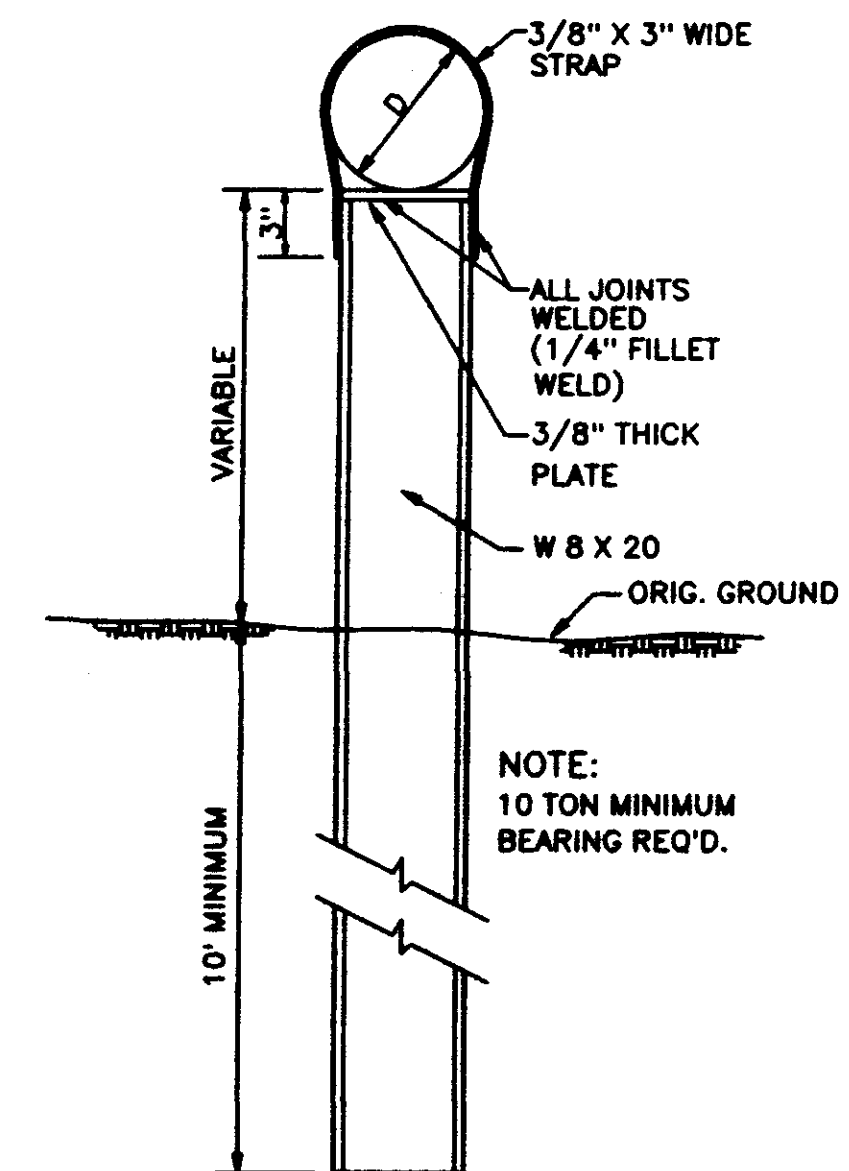
SECTION OF PRECAST CONCRETE MANHOLE

SEWER SPECIFICATIONS

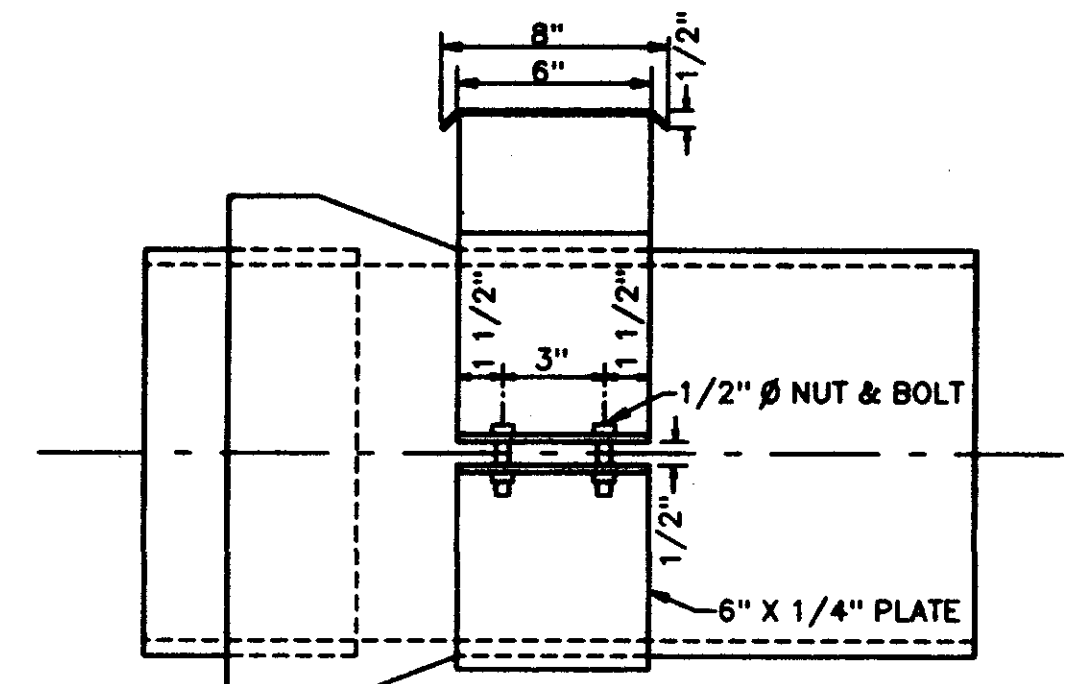
- All sewer main and services shall be Extra Strength Vitrified Clay Pipe (ASTM C-700), or PVC sewer pipe (ASTM D-3034), SDR 26.
- Manholes to be precast concrete conforming to ASTM C-478. All manholes shall be waterproofed and shall have water-tight flexible connections at inlets and outlets.
- Manhole casting to be Harper No. 1, MSPE Standard, or approved equal.
- Sewer mains to be tested by air per ASTM C-828, results to be furnished to the ENGINEER and the UTILITY. PVC sewer pipe to have a maximum of 5.0% deflection as determined by the pulling of a 5% mandrel after the pipe has been backfilled for at least 30 days.
- All sewer services to be marked at the property line with a 2" diameter creosote post or other acceptable marker.
- Bedding for sewer pipe shall be Class "C" in accordance with ASTM C-12 for rigid pipe and Class "B" in accordance with ASTM D-2321 for flexible pipe.
- Manholes shall be waterproofed with an application of Koppers 300 M Coal Tar Epoxy or approved equal, inside and outside.
- All sewer 24 inches or less will be laid with straight alignment between manholes and will be checked by either laser or tamping methods.
- All backfill will be of suitable material, hand tamped to (1) foot of the top of the pipe, and otherwise placed in such a manner as not to disturb the alignment of the pipe.
- Sewer and water mains will have a minimum separation of ten (10) feet horizontally and 18 inches vertically with relation to each other.
- Leakage tests shall include appropriate water or low pressure air testing. The leakage outward or inward (exfiltration or infiltration) shall not exceed 200 gallons per inch of pipe diameter per mile per day (0.19 m³/cm of pipe dia./km/day) for any section of the system. An exfiltration or infiltration test shall be performed with a minimum positive head of 2 feet (0.61 m). The air test, if used, shall, as a minimum conform to the test procedure described in ASTM C-828-76T entitled "Tentative Recommended Practice for Low-Pressure Air Test of Vitrified Clay Pipe Lines". The testing methods selected should take into consideration the range in ground water elevations projected and the situation during the test.
- HORIZONTAL SEPARATION—Sewers shall be laid at least 10 ft., horizontally, from any existing or proposed water main. The distance to be measured from edge to edge. In cases where the 10 ft. separation is not practical, a separation of 18 inches, vertically, will be allowed if the water main is in a separate ditch, if approved by the ENGINEER.
- CROSSINGS—Sewers crossing water mains will be laid to provide a minimum vertical separation of 18 inches between the outside of each pipe. The crossing will be arranged so that the sewer joints will be equidistant and as far as possible from the water main. Sewers crossing over water mains shall have adequate structural support to prevent damage to the water main.



VULCAN VM - 8 OR APPROVED EQUAL

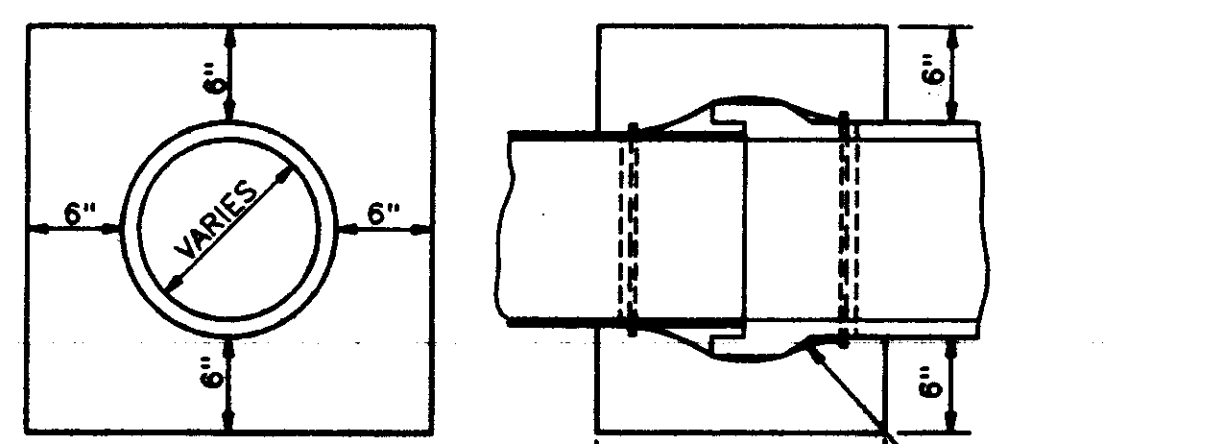


DETAIL TYPE "A" PIER

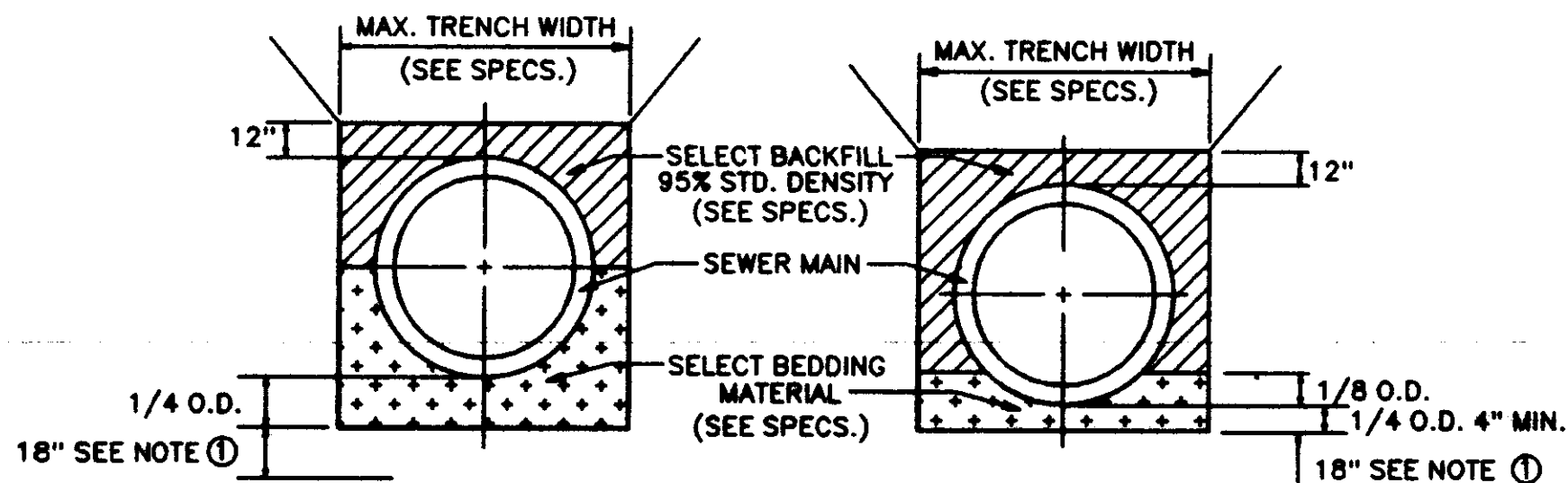


ENCASUREMENT DETAIL

NOTE:
 1. CARRIER PIPE IS D.I.P. OR SDR 26 PVC PUSH ON JOINT; USE ONE SUPPORT ASS'Y. PER JOINT OR PART THEREOF.
 2. CASING PIPE MATERIAL IS STEEL OR PVC.
 3. HOT DIP GALVANIZE ALL STEEL ASS'Y. PARTS AFTER FABRICATION.
 4. CADMIUM PLATED NUTS & BOLTS.

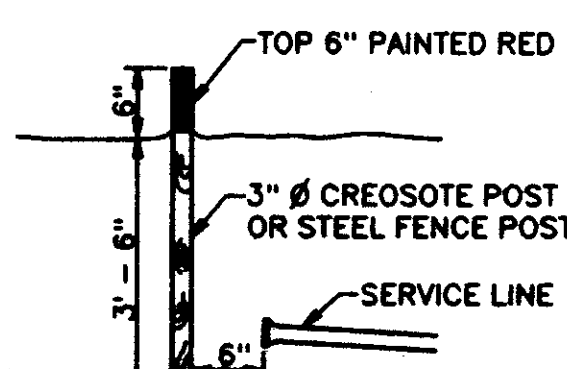


CONCRETE COLLAR DETAILS

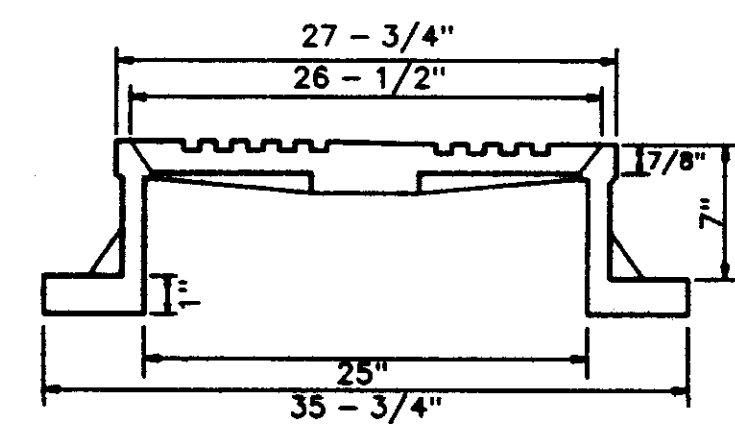


TYPICAL SECTION CLASS "B" BEDDING TYPICAL SECTION CLASS "C" BEDDING

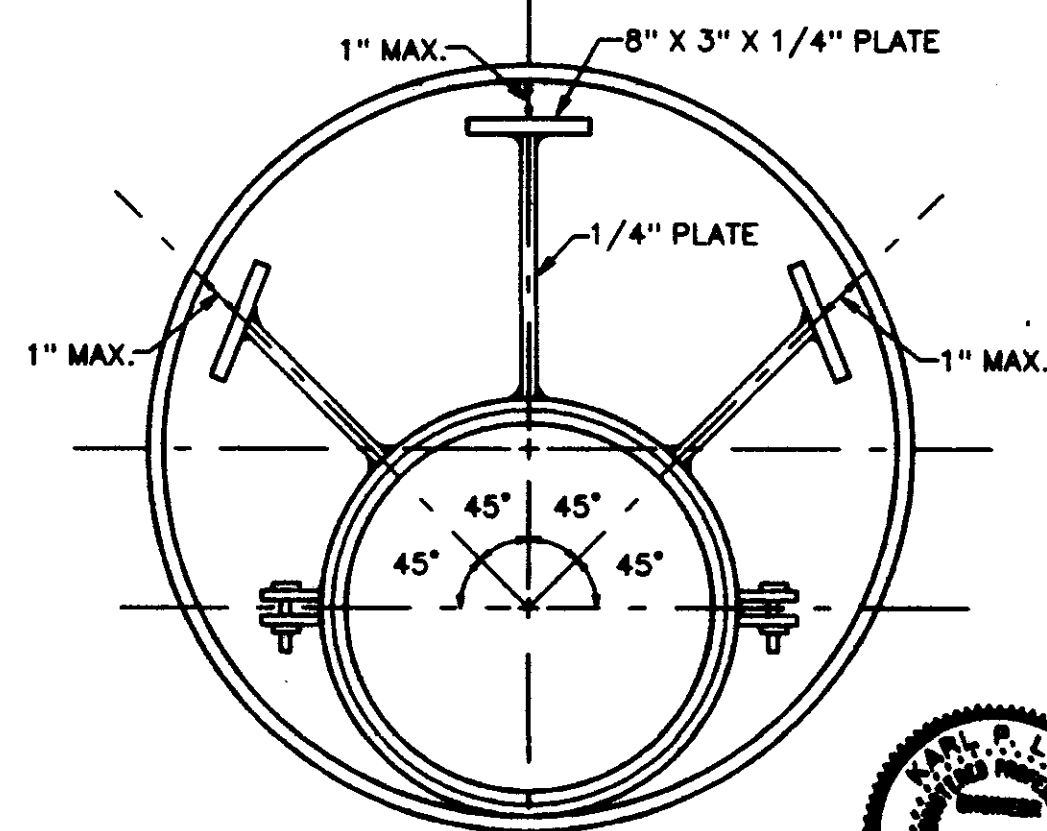
① DEWATERING REQ'D. TO THIS LEVEL (MIN.). CONTRACTOR WILL NOT BE ALLOWED TO WORK WHEN WATER LEVEL IS NOT MAINTAINED BY DEWATERING SYSTEM TO THIS ELEVATION OR LOWER.



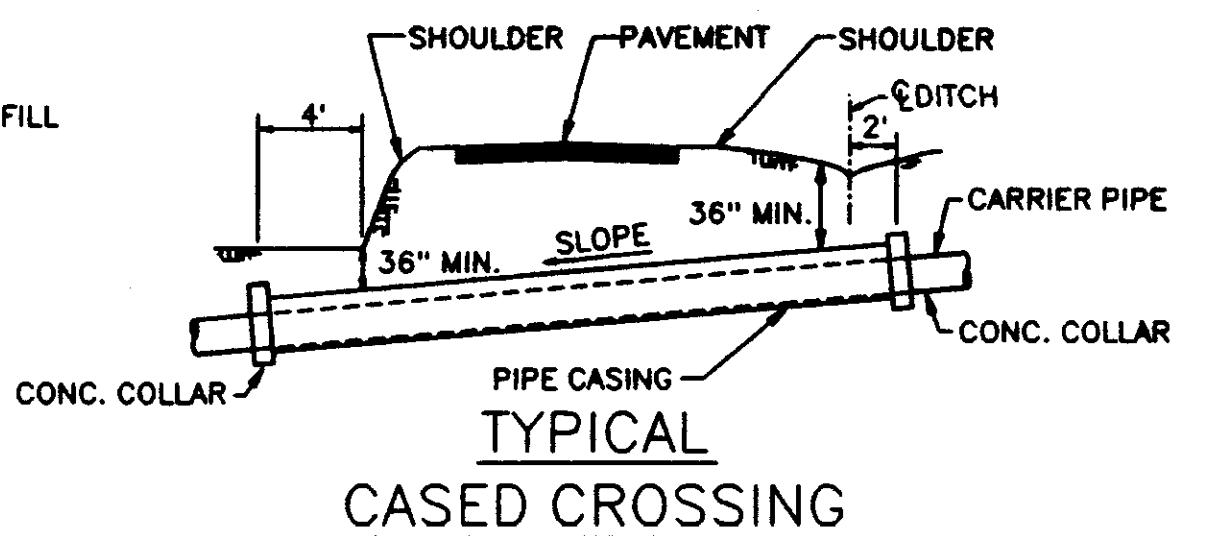
SEWER SERVICE MARKER



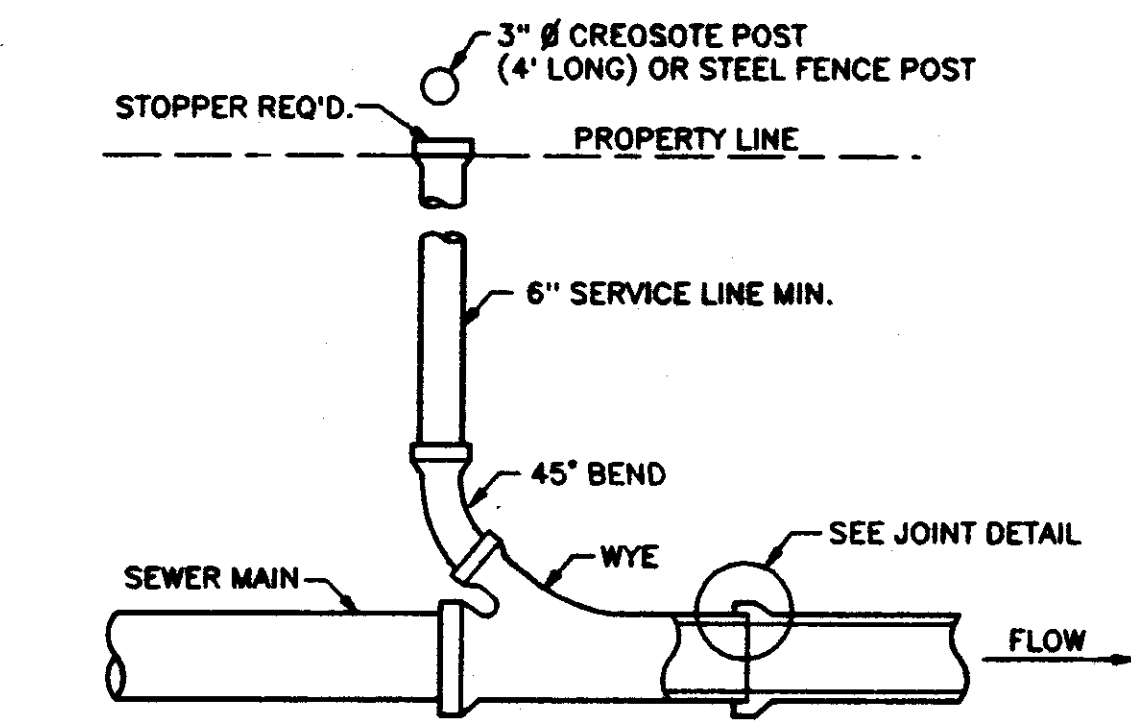
SECTION STANDARD MANHOLE CASTING



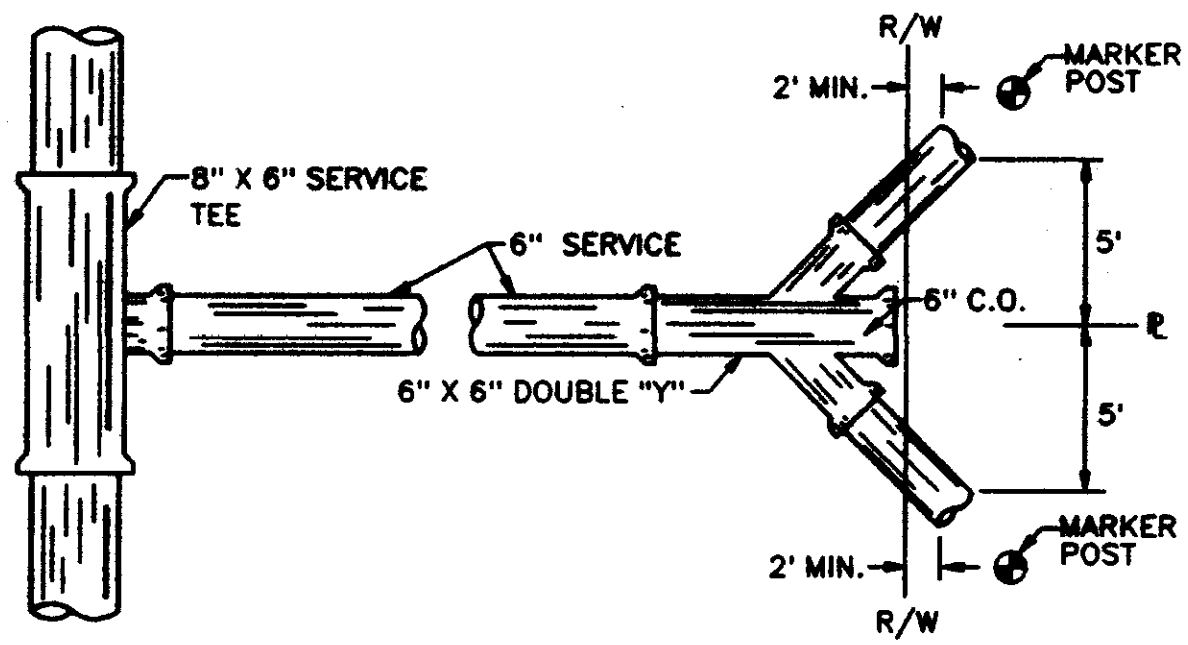
ENCASUREMENT DETAIL



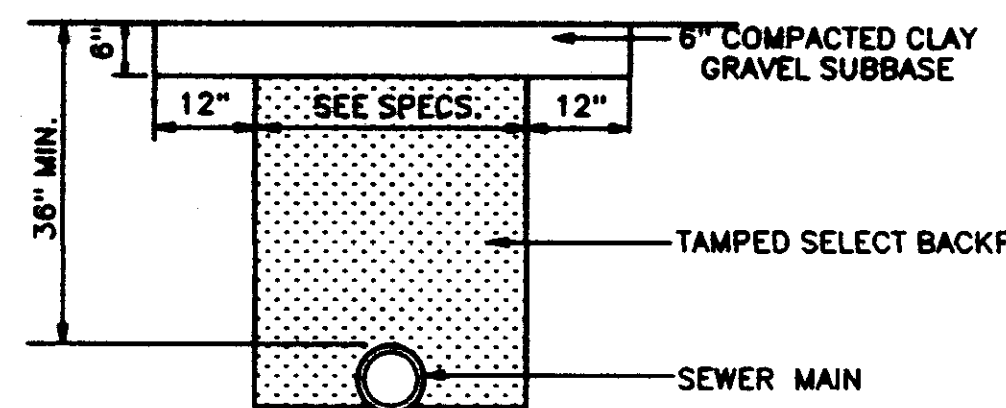
TYPICAL CASED CROSSING



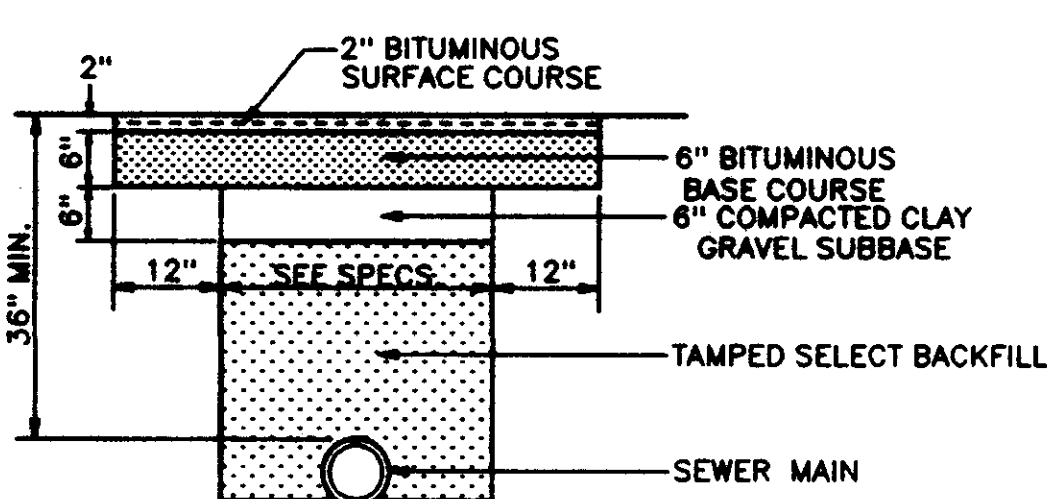
TYPICAL SERVICE TO PROPERTY LINE WITH WYE JOINT



DOUBLE SEWER SERVICE DETAIL



GRAVEL OR TEMPORARY SURFACE



PERMANENT ASPHALT SURFACE

TYPICAL TRENCH SECTIONS ACROSS IMPROVED SURFACE AREAS

Prepared: _____
 Drawn: _____
 Checked: _____
 Date: _____

CENTRAL MISSISSIPPI ENGINEERING, INC.
 115 E. MAIN STREET
 FLORENCE, MISSISSIPPI

OLD AGENCY VILLAGE
 PHASE 3
 MADISON COUNTY, MISSISSIPPI

Designed: _____
 Drawn: _____
 Approved: _____
 Date: _____