

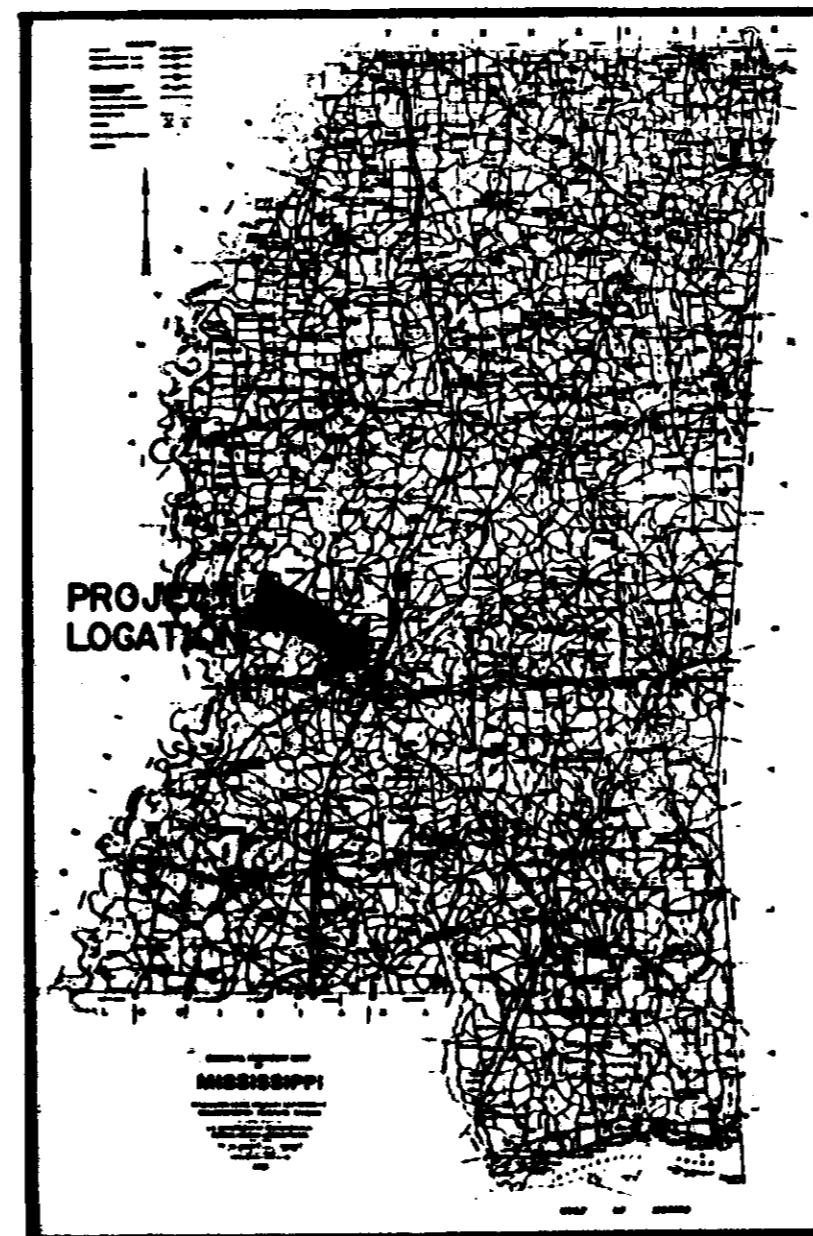
# CITY OF RIDGELAND, MISSISSIPPI

## OLD CANTON RD./RICE RD. WATER LINE EXTENSION

MAYOR:  
GENE F. MCGEE

MAYOR PRO TEM:  
HARVEY CARR, JR.

CITY ATTORNEY:  
JERRY MILLS

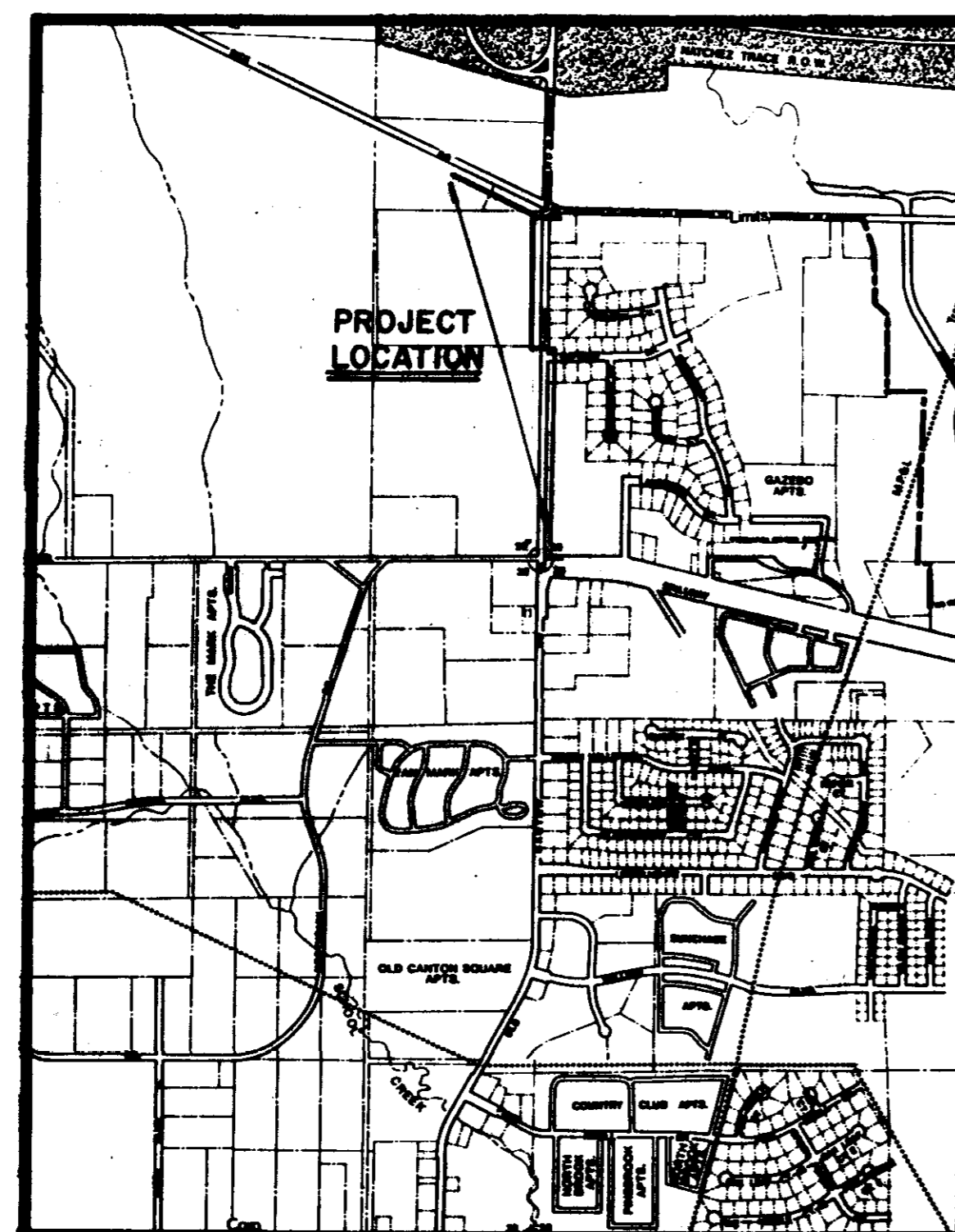


LOCATION MAP

ALDERMEN:  
BRIAN BARCELLONA  
AL BIBLE  
HARVEY CARR, JR.  
LINDA DAVIS  
DARYL SMITH

PUBLIC WORKS DIRECTOR:  
SAM VINSON P.E.

CITY CLERK:  
MICHAEL McPHEARSON



VICINITY MAP

INDEX TO DRAWINGS	
TITLE	DWG. NO.
COVER SHEET	1 of 5
PLAN	2 of 5
PLAN	3 of 5
PLAN	4 of 5
DETAILS	5 of 5



City Of Ridgeland  
Public Works Department  
Ridgeland, Mississippi

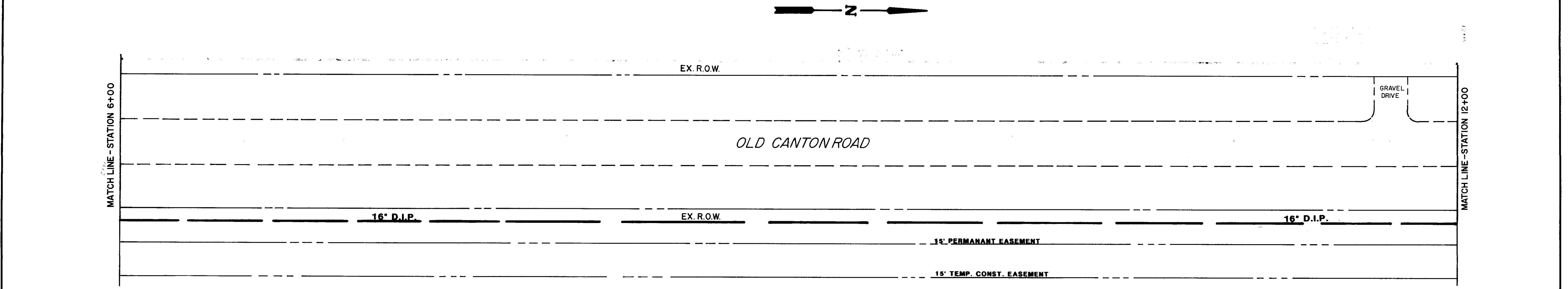
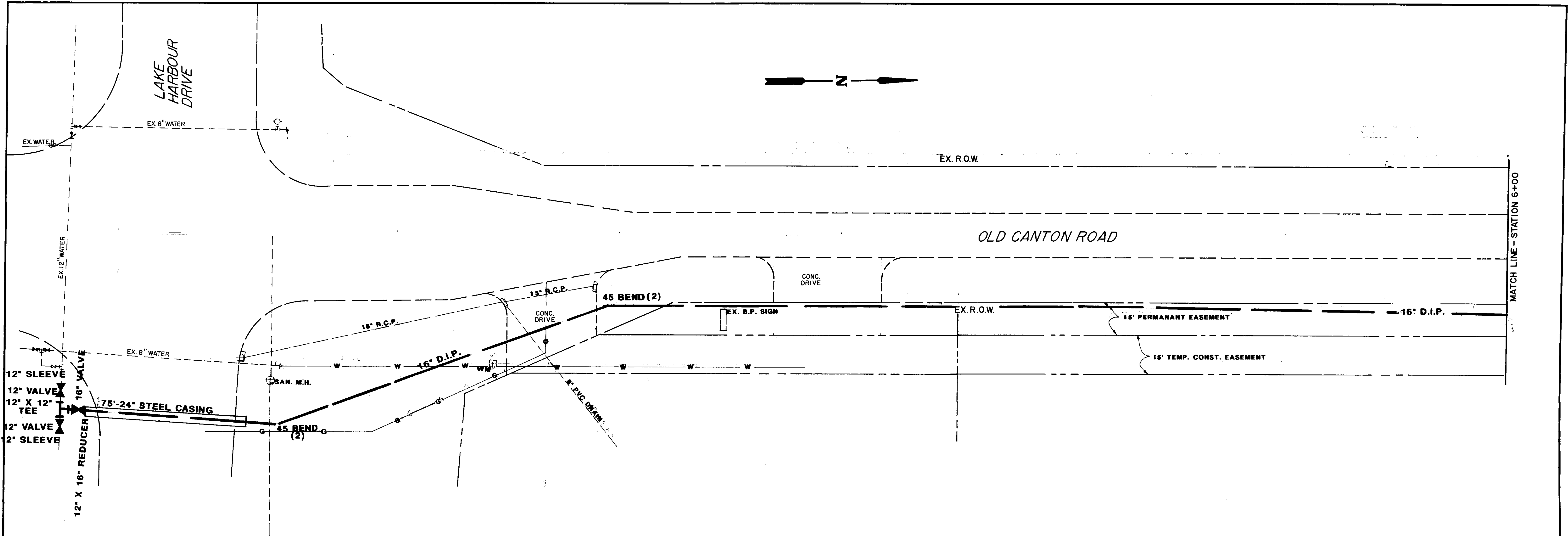
THE CITY OF

*Sam C. Vinson* Date \_\_\_\_\_

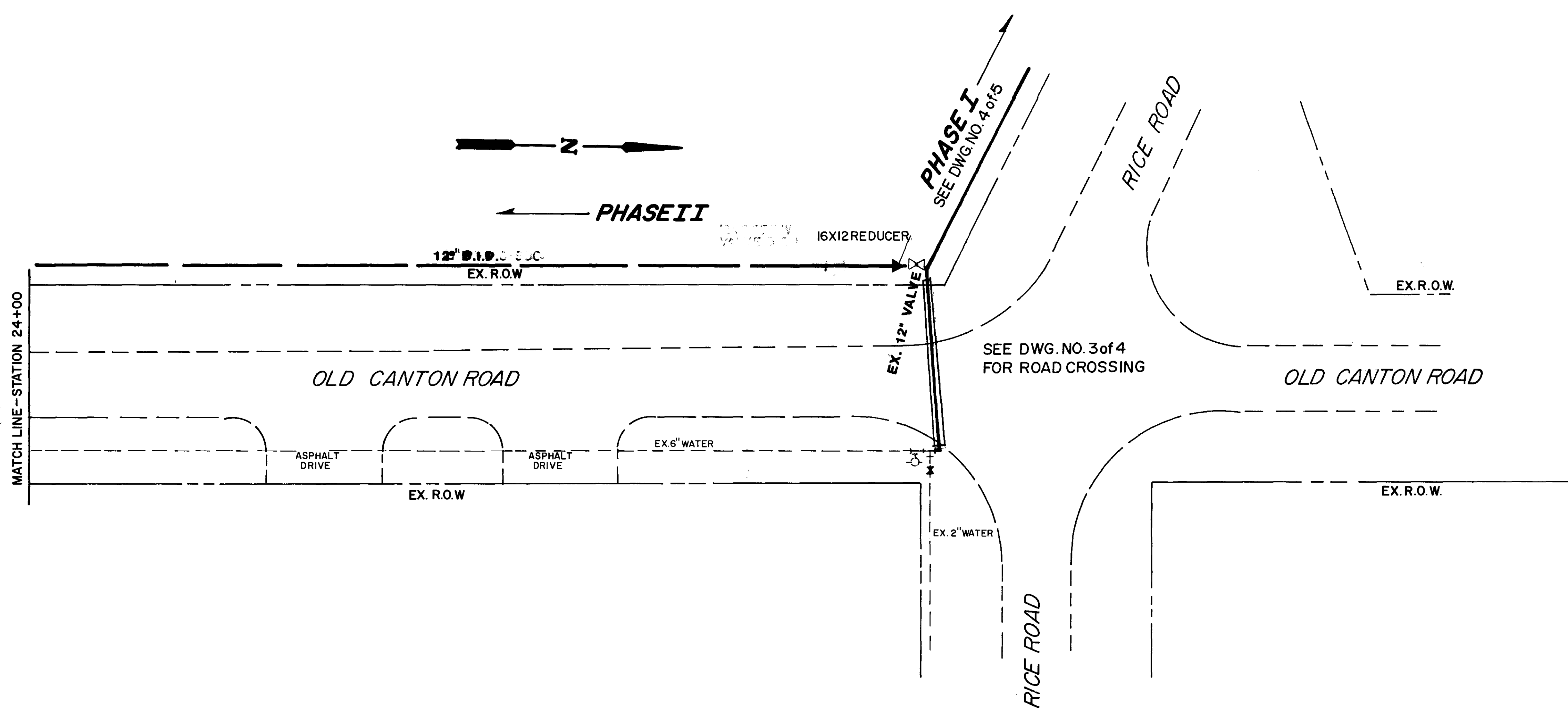
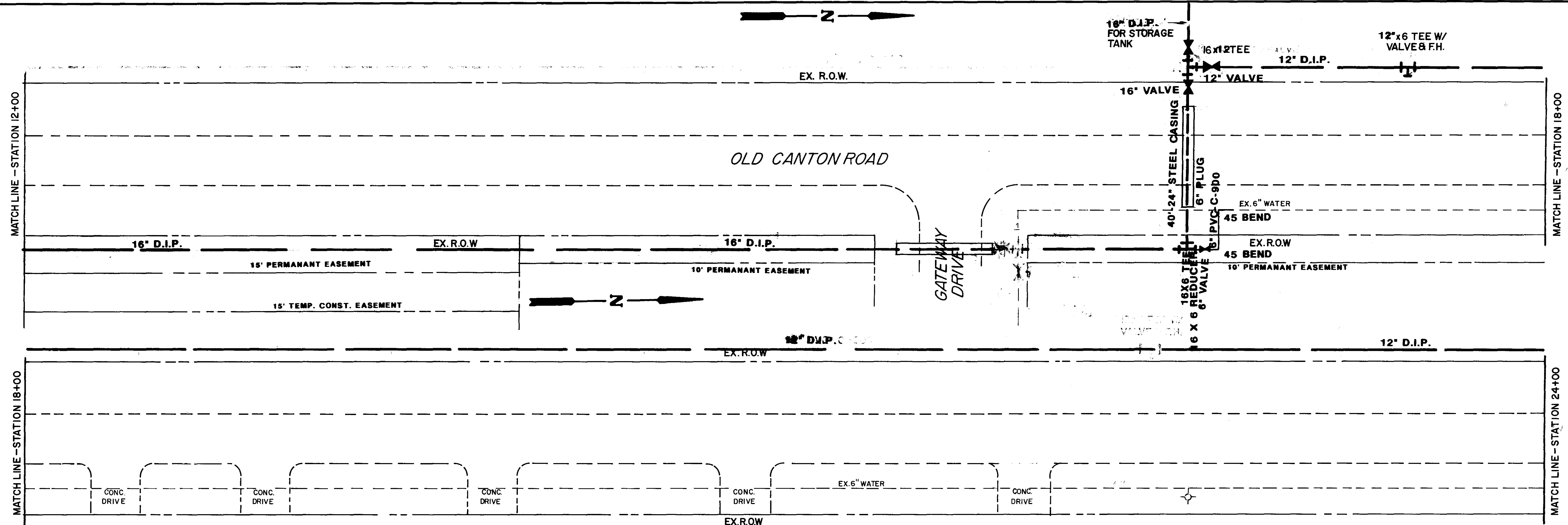


RIDGELAND Sam C. Vinson, Jr. P.E.  
Mississippi License No. 2325

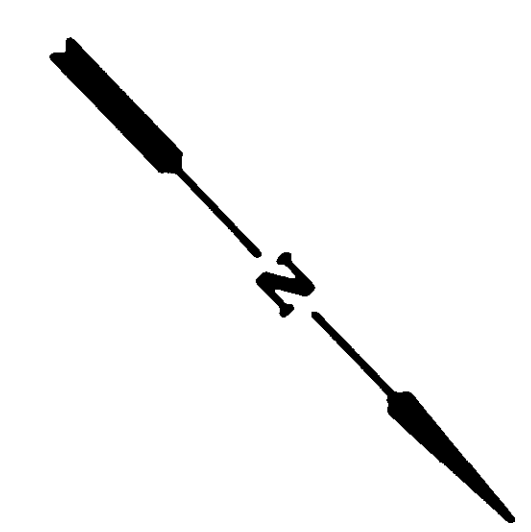
**RWP-01511**



OLD CANTON RD./RICE RD. WATER LINE EXTENSION		
SCALE: 1"=20' DATE: 8/16/91	APPROVED BY SAM C. VINSON P.E.	DRAWN BY BRM REVISED: 5/7/92
CITY OF RIDGELAND, MS.		
PLAN	DRAWING NUMBER 2 of 5	



OLD CANTON RD./ RICE RD. WATER LINE EXTENSION		
SCALE: 1"=20'	APPROVED BY SAM C. VINSON PE.	DRAWN BY: B.R.M. REVISED: 5/7/92
CITY OF RIDGELAND, MS.		
PLAN	DRAWING NUMBER 3 of 5	



**PHASE II**  
SEE DWG. NO. S-283 OF 5  
**OLD CANTON RD**

**PHASE I**

450' 12" PVC C900 REQ'D.

EX. R.O.W.

12x6 TEE W/ VALVE & F.H. REQ'D.  
2" BLOW OFF REQ'D.

6" PVC C-900 REQ'D.

50'-20" STEEL CASING REQ'D.  
TIE TO EX. 6" WATER

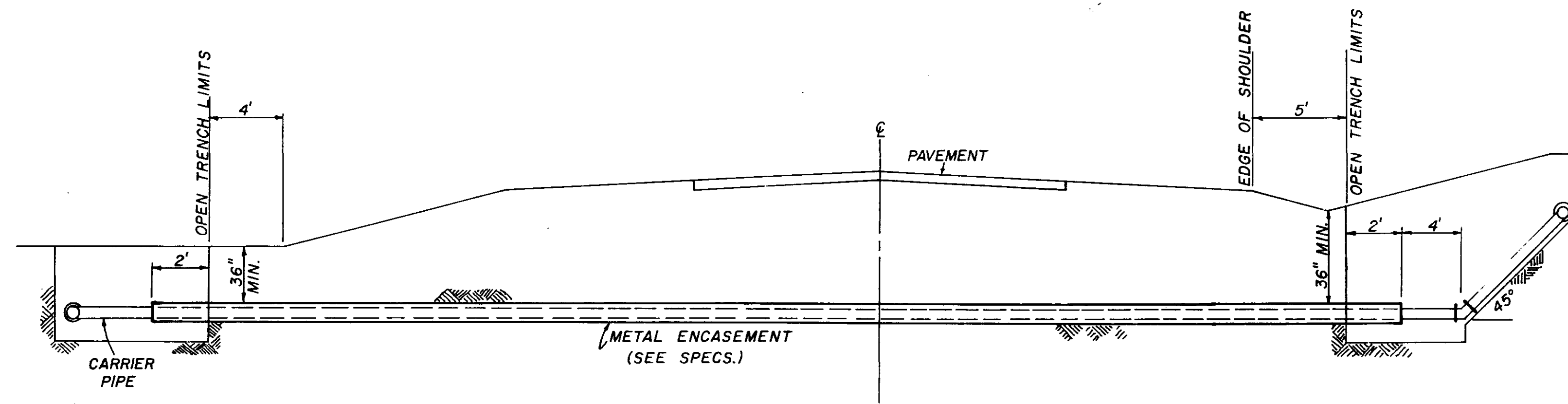
*RICE ROAD*

EX. R.O.W.

EX. 6" WATER  
EX. 2" WATER  
EX. R.O.W.

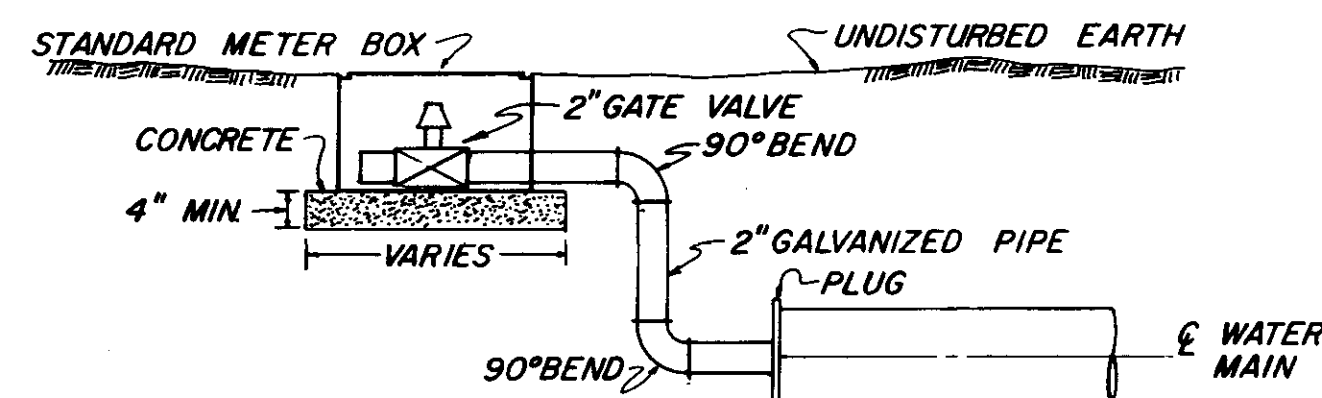
EX. R.O.W.

OLD CANTON RD./ RICE RD. WATER LINE EXTENSION		
SCALE: 1" = 20'	APPROVED BY SAM C. VINSON P.E.	DRAWN BY BRM
DATE: 8/16/91	CITY OF RIDGELAND, MS.	
PLAN	DRAWING NUMBER 4 of 5	

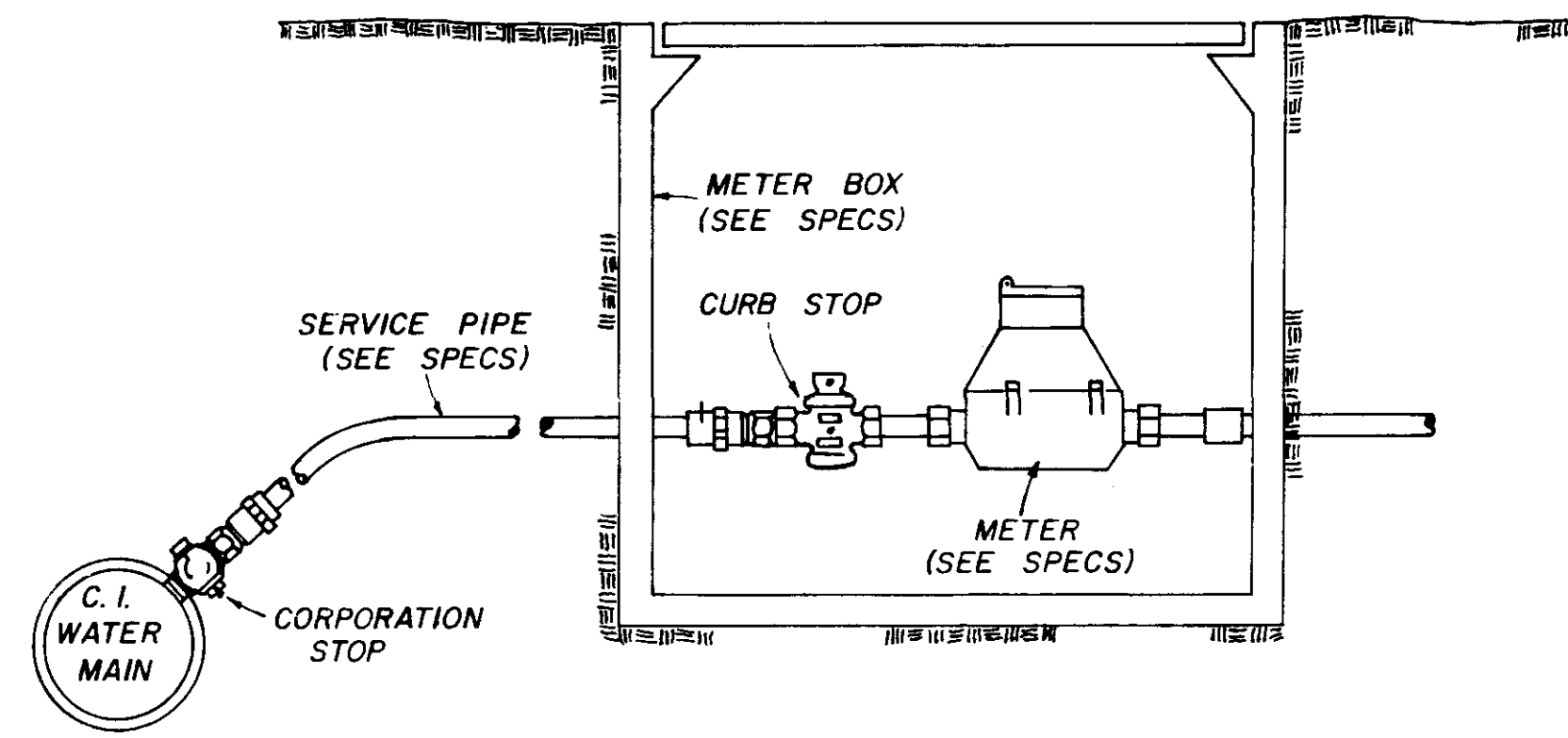


**TYPICAL CASIED CROSSING**

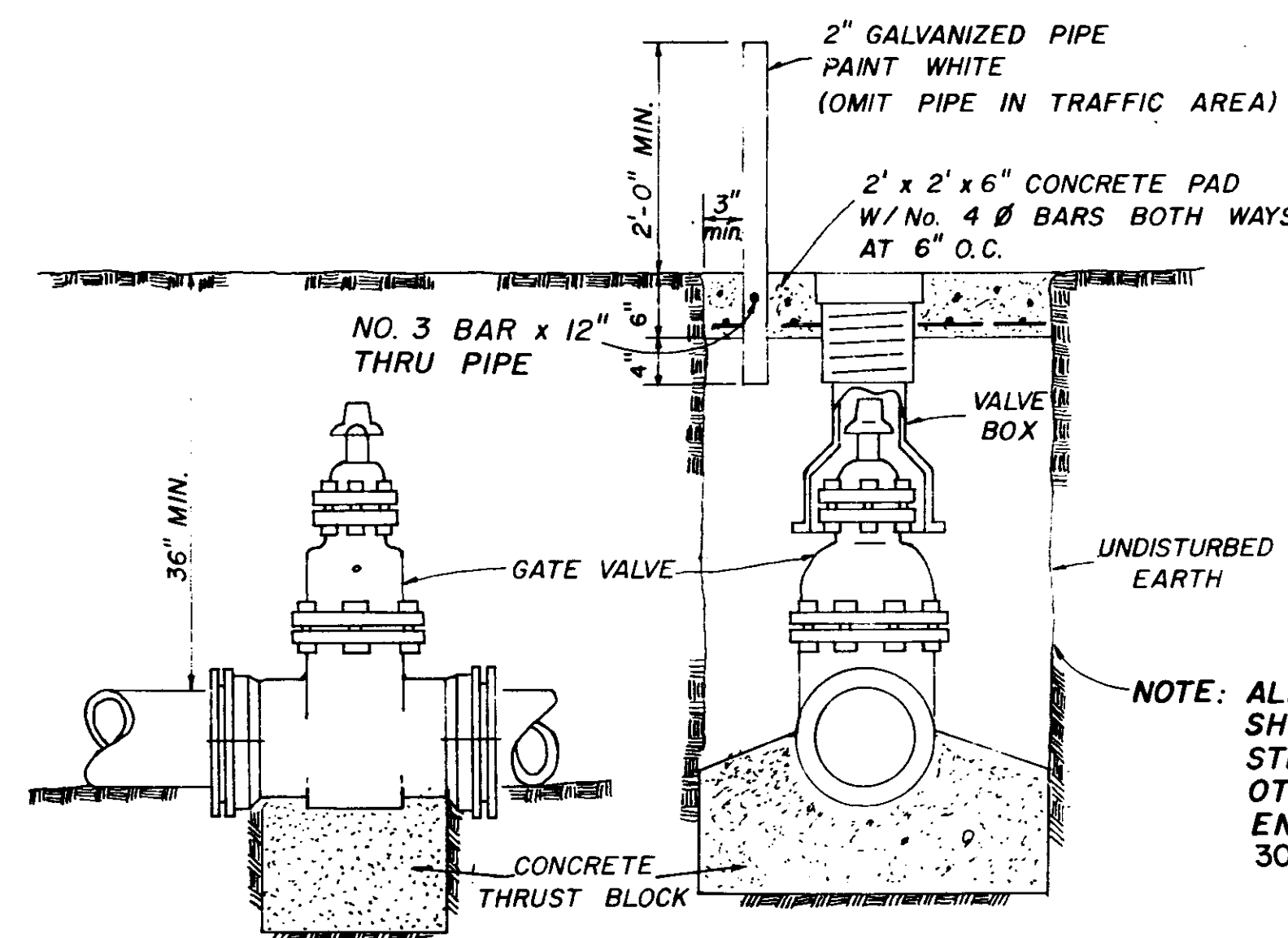
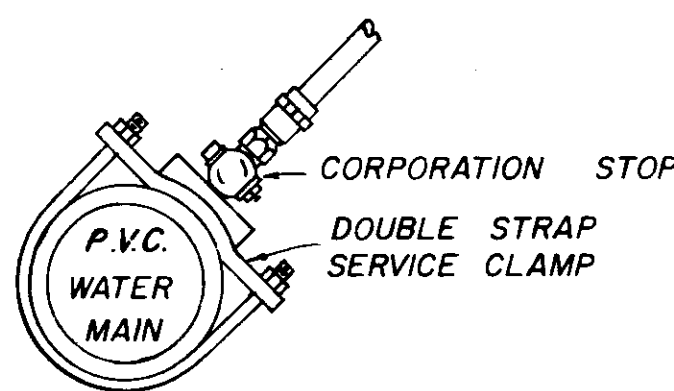
NOTE: COMPENSATION FOR CONCRETE THRUST BLOCKS SHALL BE INCLUDED IN THE UNIT PRICE BID FOR VALVES, FIRE HYDRANTS AND FITTINGS.



**TYPICAL 2" BLOW-OFF DETAIL**



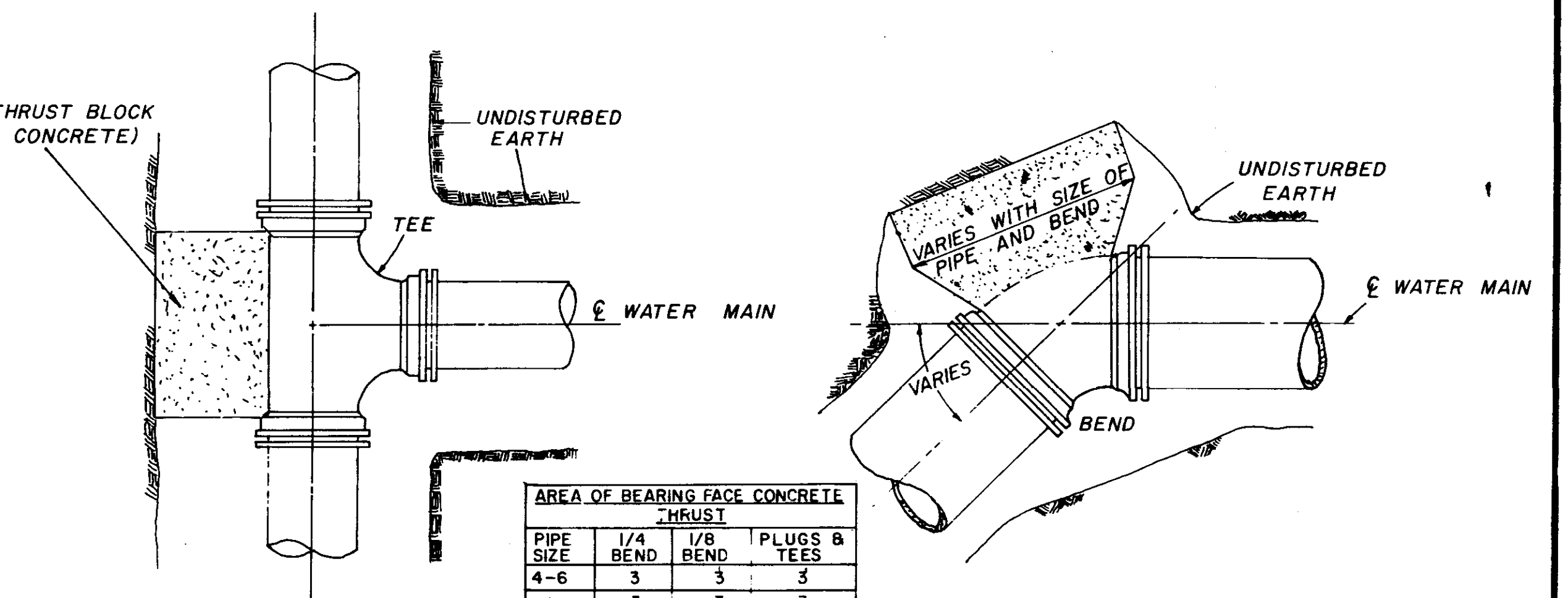
**TYPICAL SERVICE ASSEMBLY**



**ELEVATION SECTION**

**TYPICAL VALVE & BOX**

NOTE: ALL WATER MAIN CONNECTIONS SHALL BE RODDED WITH ALL STEEL RODS (3/4" MIN.) UNLESS OTHERWISE INSTRUCTED BY ENGINEER. (RODS SHALL BE TYPE 304 STAINLESS STEEL)

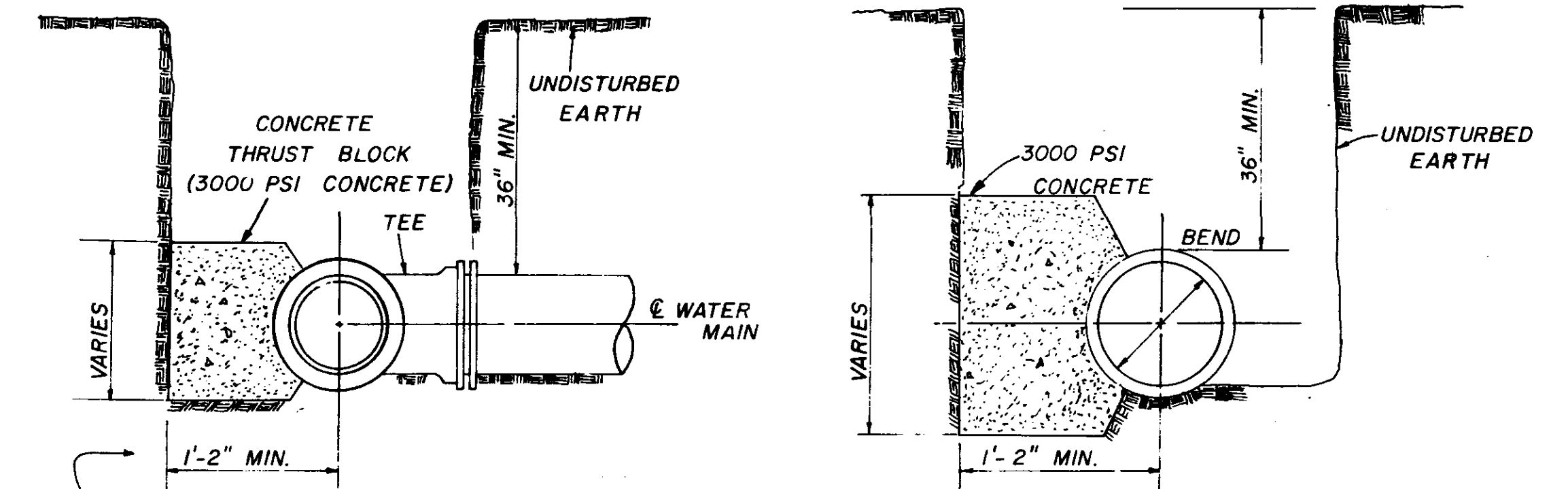


**PLAN**

**PLAN**

PIPE SIZE	1/4 BEND	1/8 BEND	PLUGS & TEES
4-6	3	3	3
8	3	3	3
10	4	3	3
12	6	3	4
16	11	4	7

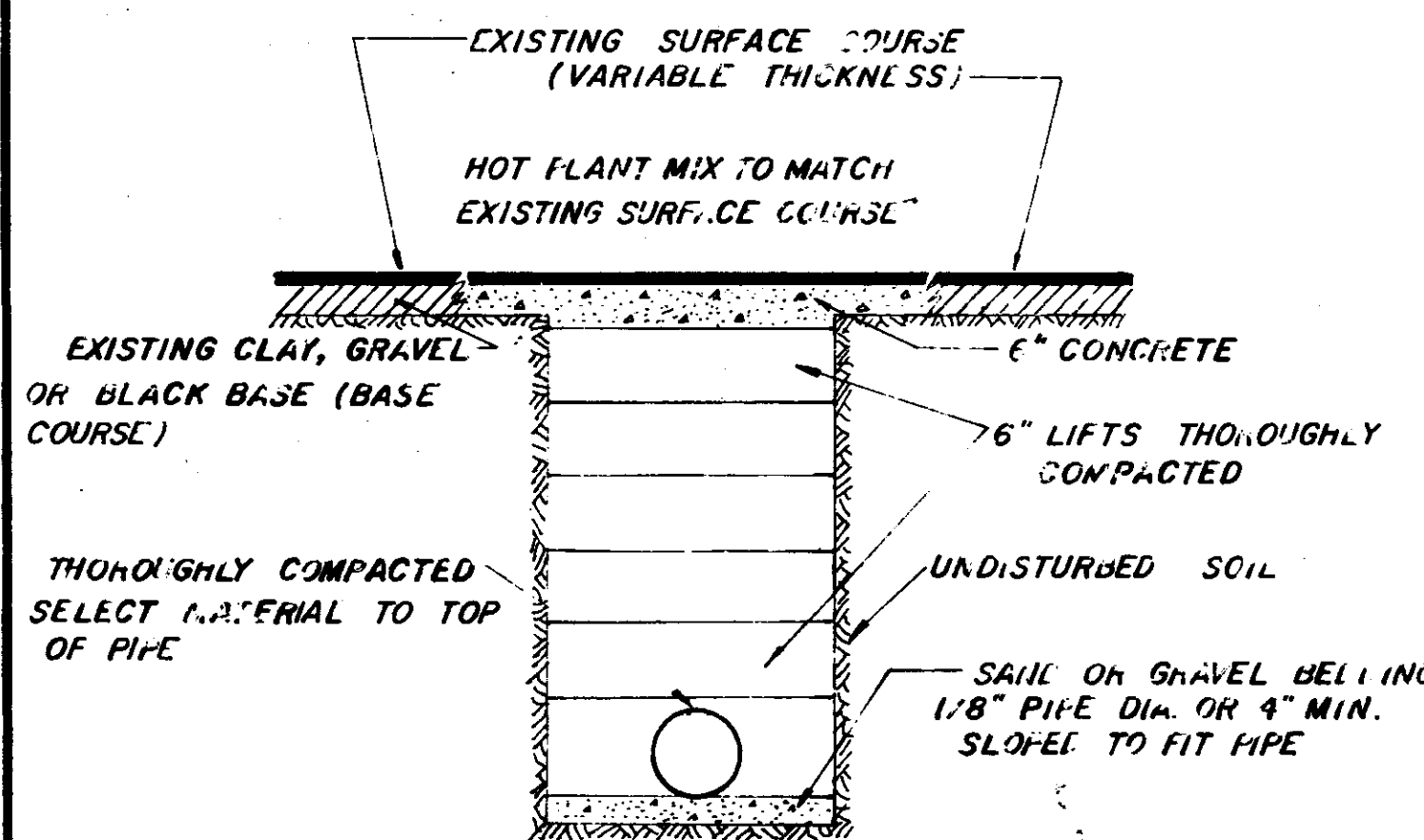
NOTE: AREA OF BEARING FACE IN SQUARE FEET.



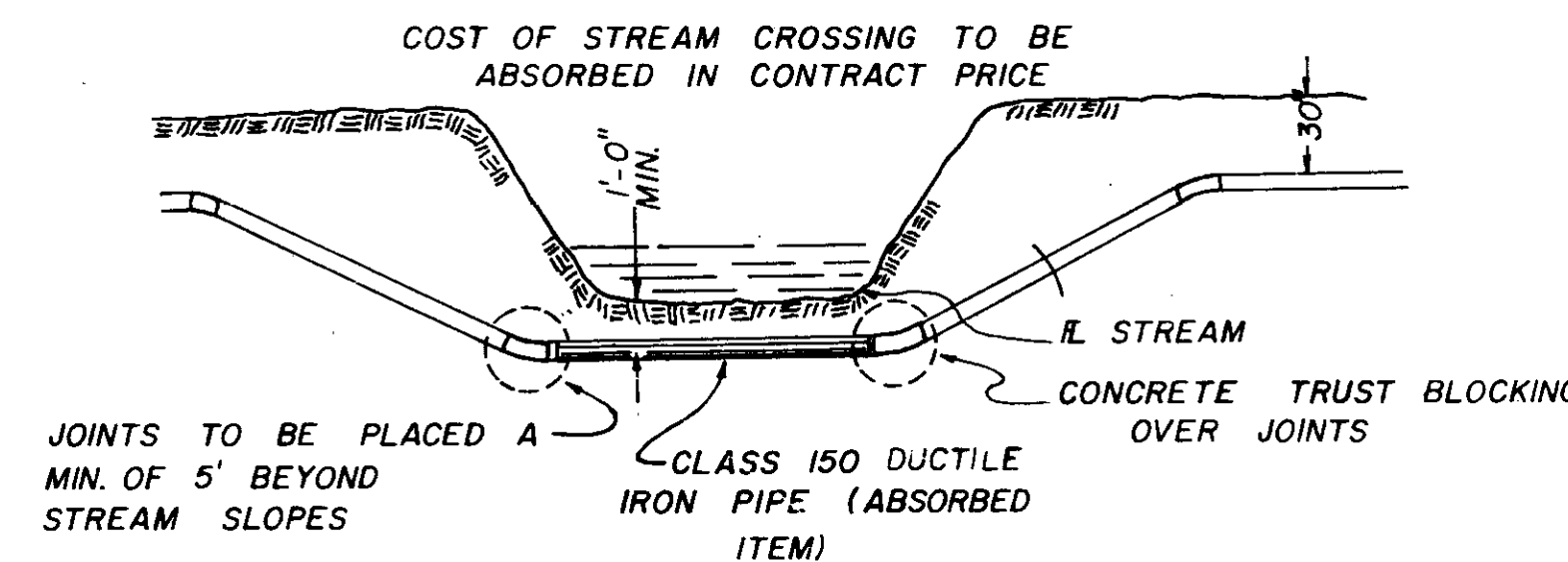
**SECTION**

**SECTION**

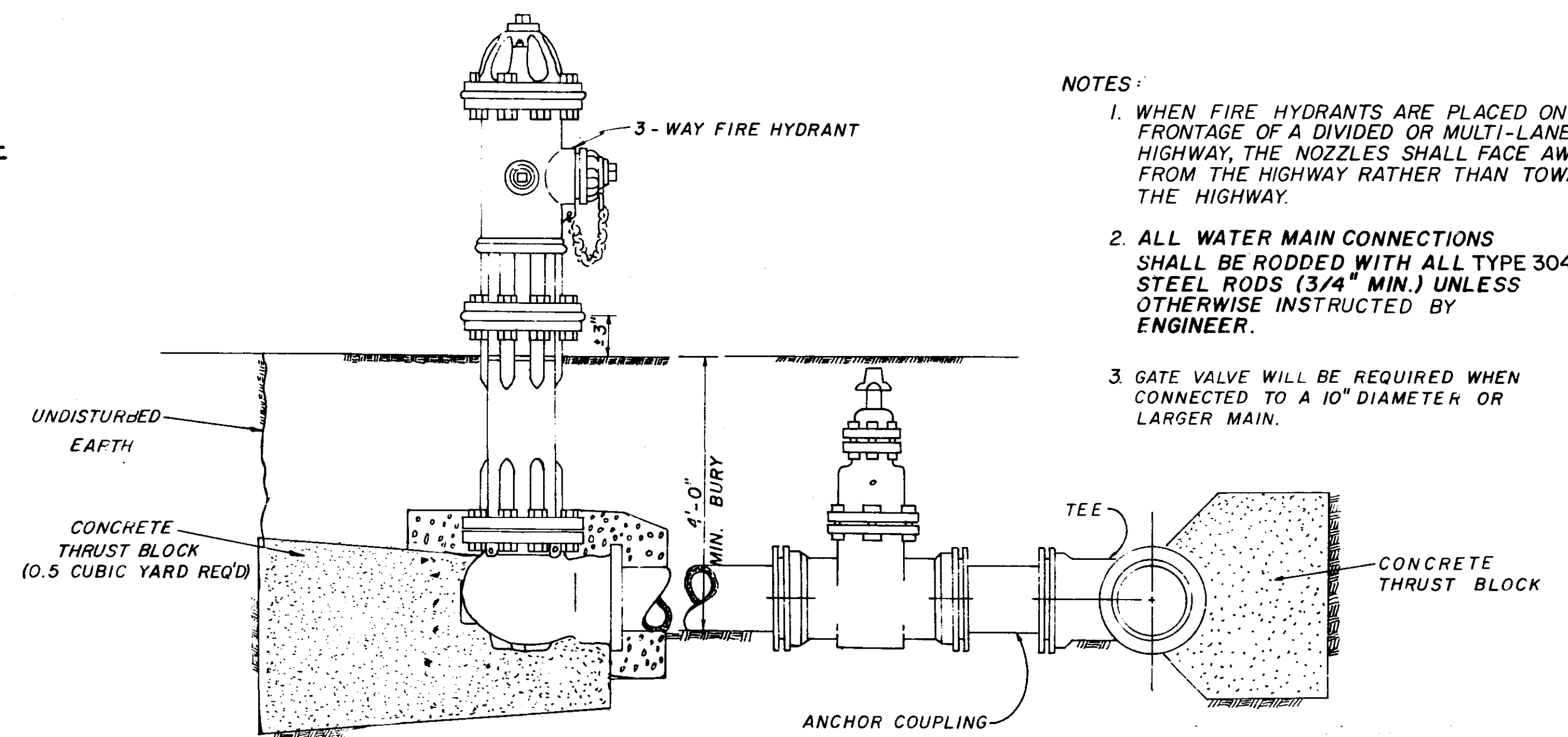
**BLOCKING DETAILS FOR TEES & BENDS**



**STREET REPAIR OF OPEN CUT**



**TYPICAL STREAM CROSSING**



**TYPICAL FIRE HYDRANT**

- NOTES:
1. WHEN FIRE HYDRANTS ARE PLACED ON THE FRONTAGE OF A DIVIDED OR MULTI-LANE HIGHWAY, THE NOZZLES SHALL FACE AWAY FROM THE HIGHWAY RATHER THAN TOWARD THE HIGHWAY.
  2. ALL WATER MAIN CONNECTIONS SHALL BE RODDED WITH ALL TYPE 304 STAINLESS STEEL RODS (3/4" MIN.) UNLESS OTHERWISE INSTRUCTED BY ENGINEER.
  3. GATE VALVE WILL BE REQUIRED WHEN CONNECTED TO A 10" DIAMETER OR LARGER MAIN.

OLD CANTON RD. / RICE RD.		
WATER LINE EXTENSION		
SCALE: 1"=30'	APPROVED BY:	DRAWN BY: BRM
11/23/90		REVISED:
CITY OF RIDGELAND, MS.		
DETAILS	DRAWING NUMBER	
	5 of 5	