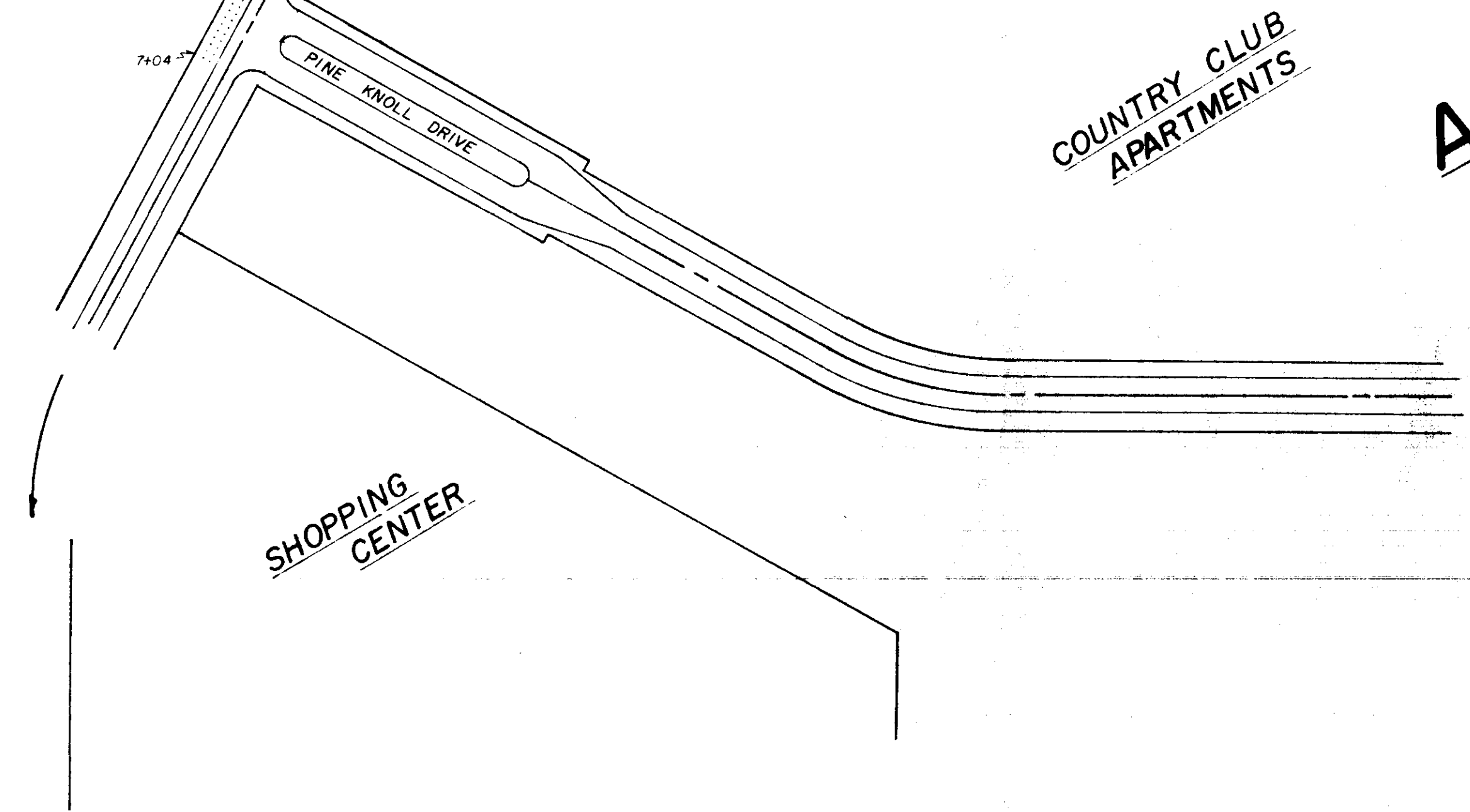


PROPOSED SEWER & WATER IMPROVEMENTS
 SITUATED IN SECTION 32, T7N, R2E
 MADISON COUNTY, MISSISSIPPI



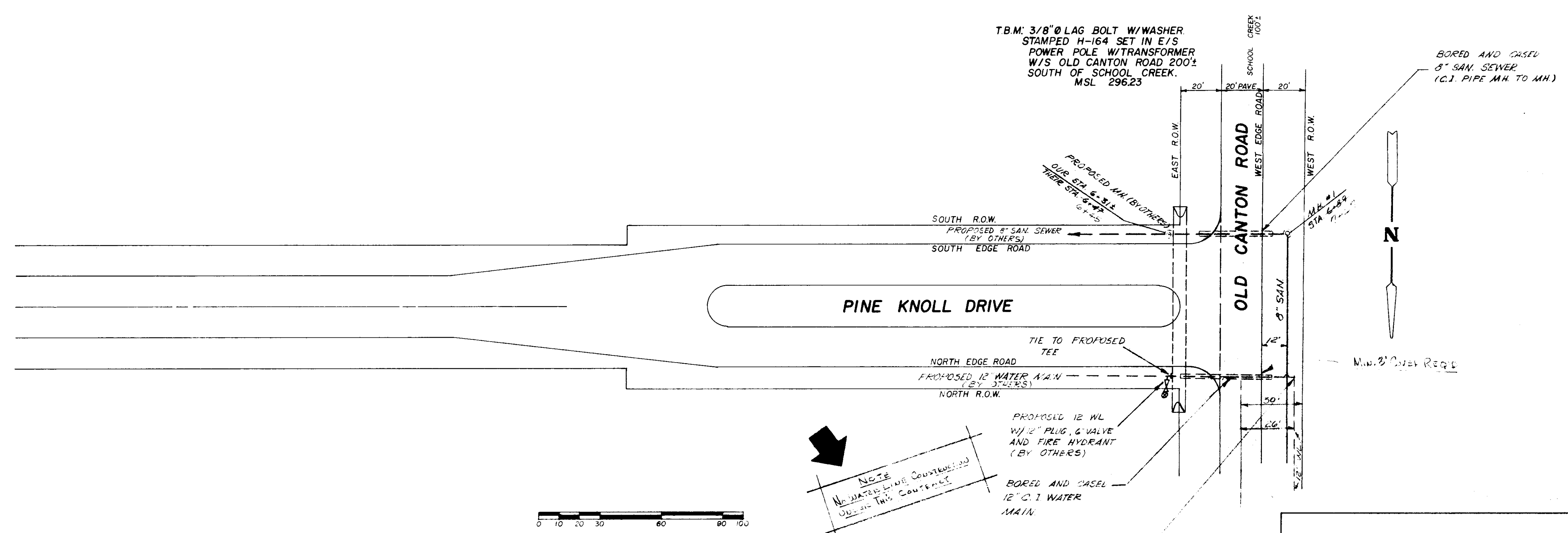
COUNTRY CLUB
 APARTMENTS
 AS BUILT

I, H.L. Hutchinson, Registered Professional Engineer, do hereby certify that a Final Field Survey was conducted and that these "As Built" are true and correct to the best of my knowledge and belief.

H.L. Hutchinson
 H.L. Hutchinson Date: 4/11/79

H.L. HUTCHINSON
 CIVIL ENGINEER - SURVEYOR
 JACKSON, MISSISSIPPI
 April-1979

PWP-01503



I, H.L. Hutchinson, Registered Professional Engineer, do hereby certify that a Final Field Survey was conducted and these "As Built" Plans are true and correct to the best of my knowledge and belief.

H.L. Hutchinson 4/29/79
 H.L. Hutchinson, R.P.E., Date

NOTE
 All Water and Sewer Construction Shall Be In Accordance With Current City Of Ridgeland And The County Of Madison Specifications And Practices.

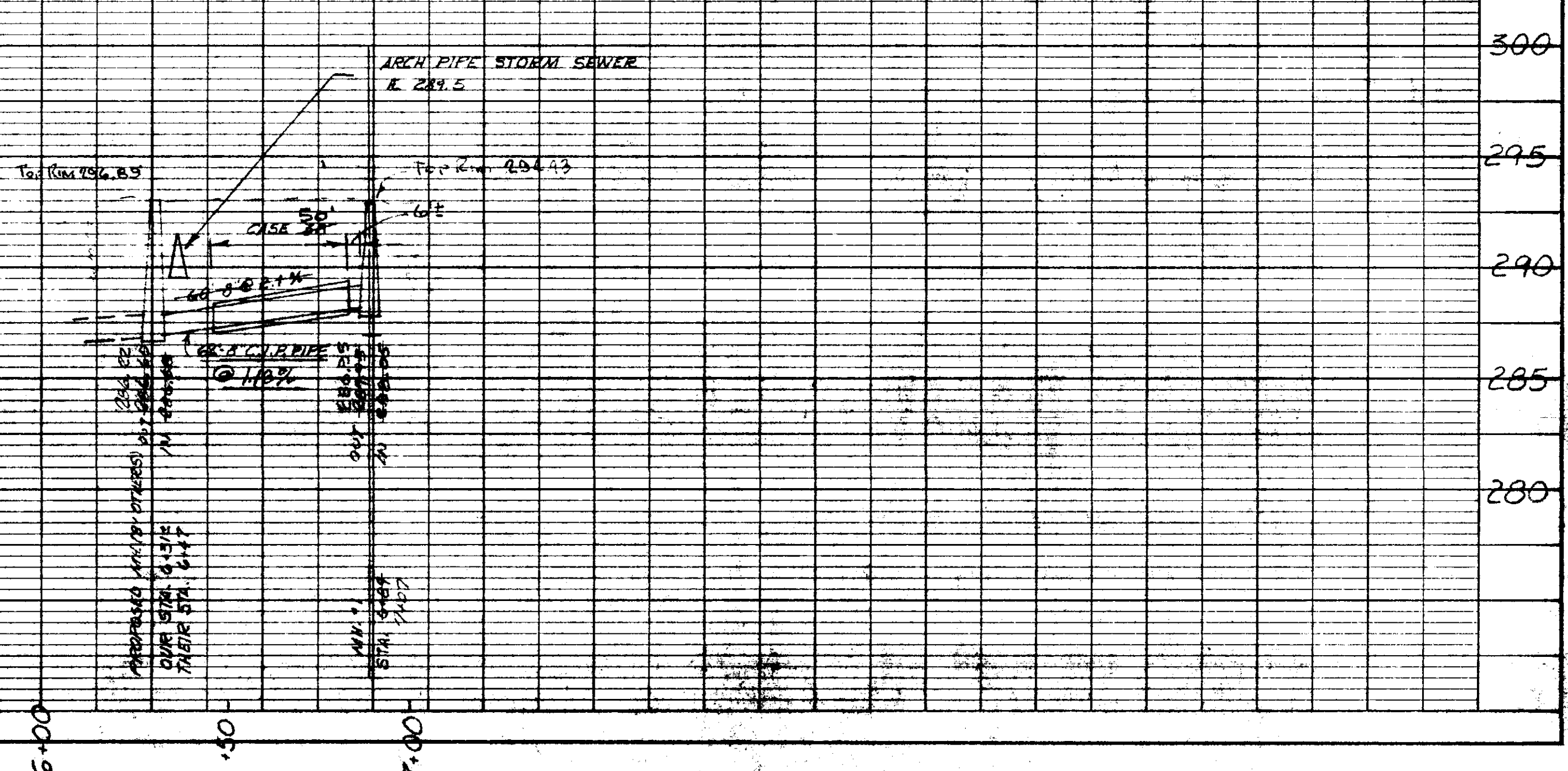
NOTE
 No Water Mains Constructed Outside This Contract

PROPOSED SANITARY SEWER AND WATER IMPROVEMENTS ON OLD CANTON ROAD MADISON COUNTY, MISSISSIPPI

H.L. HUTCHINSON
 CIVIL ENGINEER-SURVEYOR
 JACKSON, MISSISSIPPI

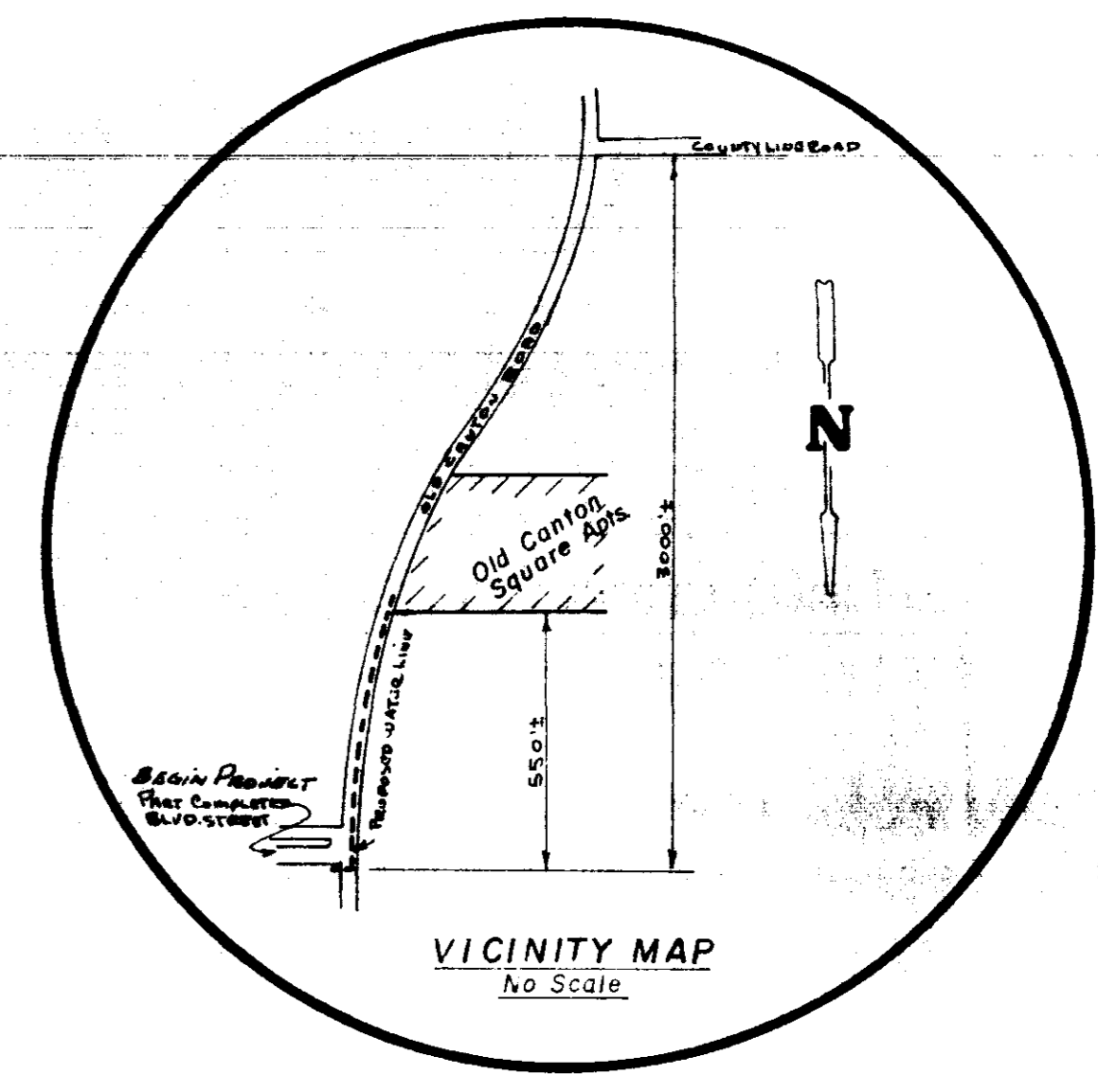
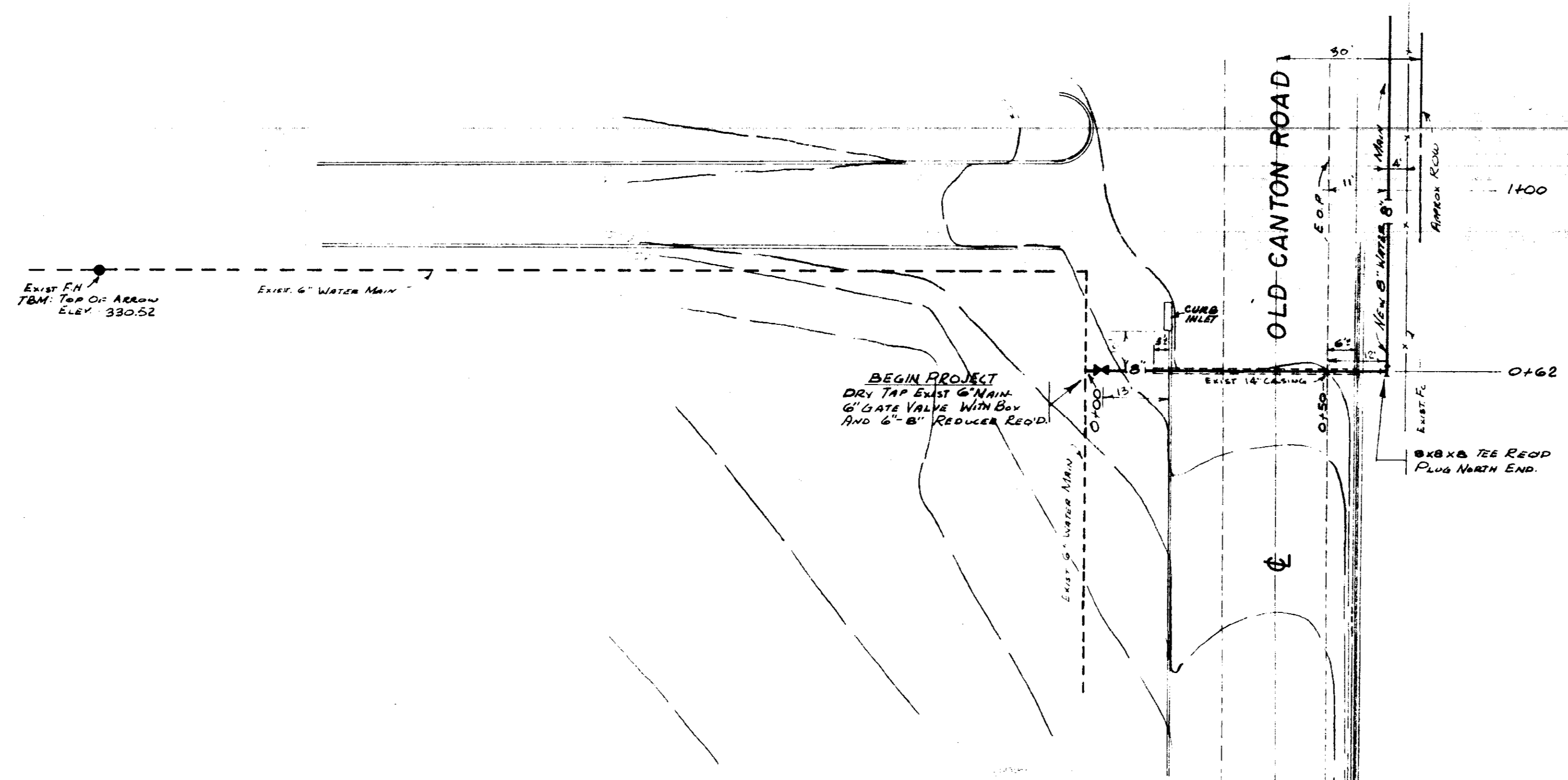
SCALE: 1" = 30' HORI. 1" = 5' VERT. DATE: APRIL 16, 1979 SHEET 2 OF 3

AS BUILT

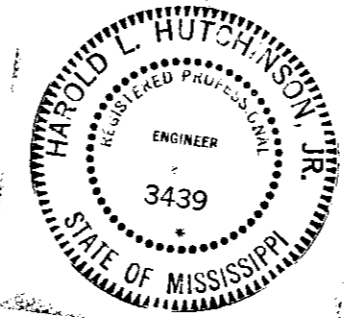


DATE	
BY	
CHECKED	
APPROVED	
PROJECT	
NO. BOOK	
NO. SHEET	
BTM	

DATE	
BY	
CHECKED	
APPROVED	
PROJECT	
NO. BOOK	
NO. SHEET	
B011E	



I, P.L. Hutchinson, Registered Professional Engineer, do hereby certify that the plan and profile shown hereon were prepared by me or under my direct supervision and that I am a duly licensed and bonded engineer and architect in the State of Mississippi.

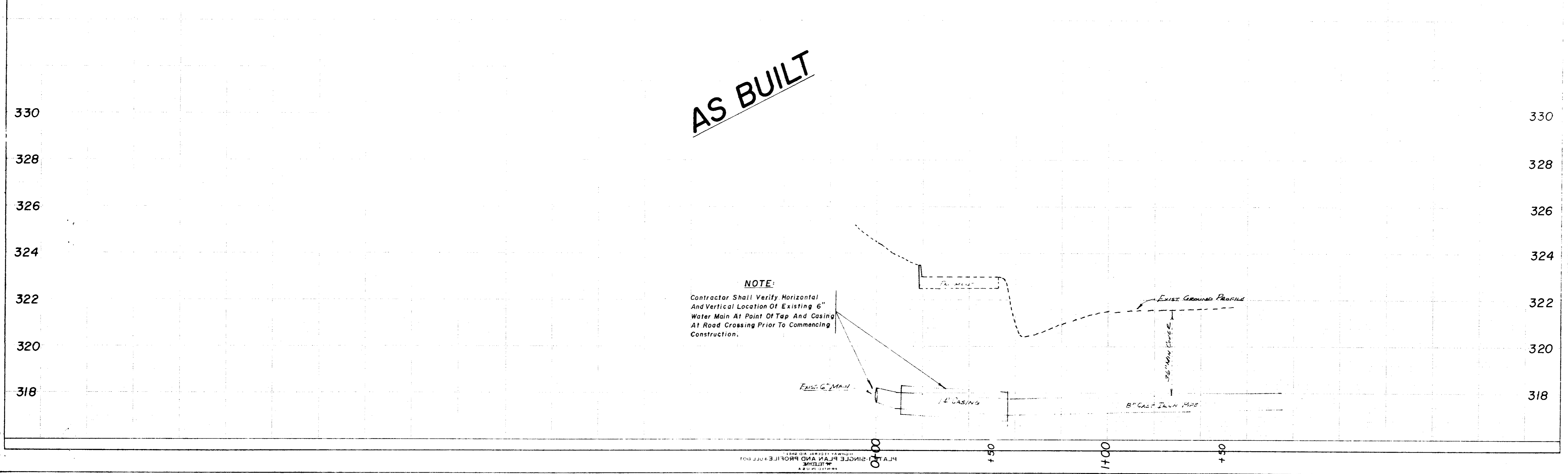


NOTE
All Construction Shall Be In Accordance With Current City Of Ridgeland And County Of Madison Specifications And Practices.

WATER IMPROVEMENTS ON OLD CANTON ROAD MADISON COUNTY, MISS.		
H.L. Hutchinson CIVIL ENGINEER-SURVEYOR JACKSON, MISSISSIPPI		
SCALE: 1" = 20' HOR. 1" = 2' VERT.	September 28, 1979	SHEET 1 OF 2

NO.	DATE	BY	CHKD.
1	9/28/79	H.L.H.	H.L.H.
2			
3			
4			
5			
6			
7			
8			
9			
10			

AS BUILT



NOTE:
Contractor Shall Verify Horizontal And Vertical Location Of Existing 6" Water Main At Point Of Tap And Casing At Road Crossing Prior To Commencing Construction.

NO.	DATE	BY	CHKD.
1	9/28/79	H.L.H.	H.L.H.
2			
3			
4			
5			
6			
7			
8			
9			
10			

