



WAGGONER  
ENGINEERING, INC.  
ENGINEERS, PLANNERS, SCIENTISTS

825 N. PRESIDENT ST.  
JACKSON, MS 39202  
601-355-9526  
FAX 601-352-3945

WEI #98-074

# City of Ridgeland, Mississippi

## WATER WELL ON OLD CANTON ROAD / MIDWAY AVENUE

### 1999 WATER WELL IMPROVEMENTS

**CITY OFFICIALS**

**MAYOR**  
GENE F. McGEE

**MAYOR PRO TEMPORE**  
GERALD STEEN

**BOARD OF ALDERMEN**

- ANN BRAME HURD, WARD 1
- LISA DeCELL WALTERS, WARD 2
- CAROLE A. DAVIS, WARD 3
- LARRY ROBERTS, WARD 4
- LINDA DAVIS TRUNZLER, WARD 6
- GERALD STEEN, AT-LARGE

**CITY CLERK**

MICHAEL R. McPHEARSON

**CITY ATTORNEY**

JERRY MILLS

**DIRECTOR OF PUBLIC WORKS**

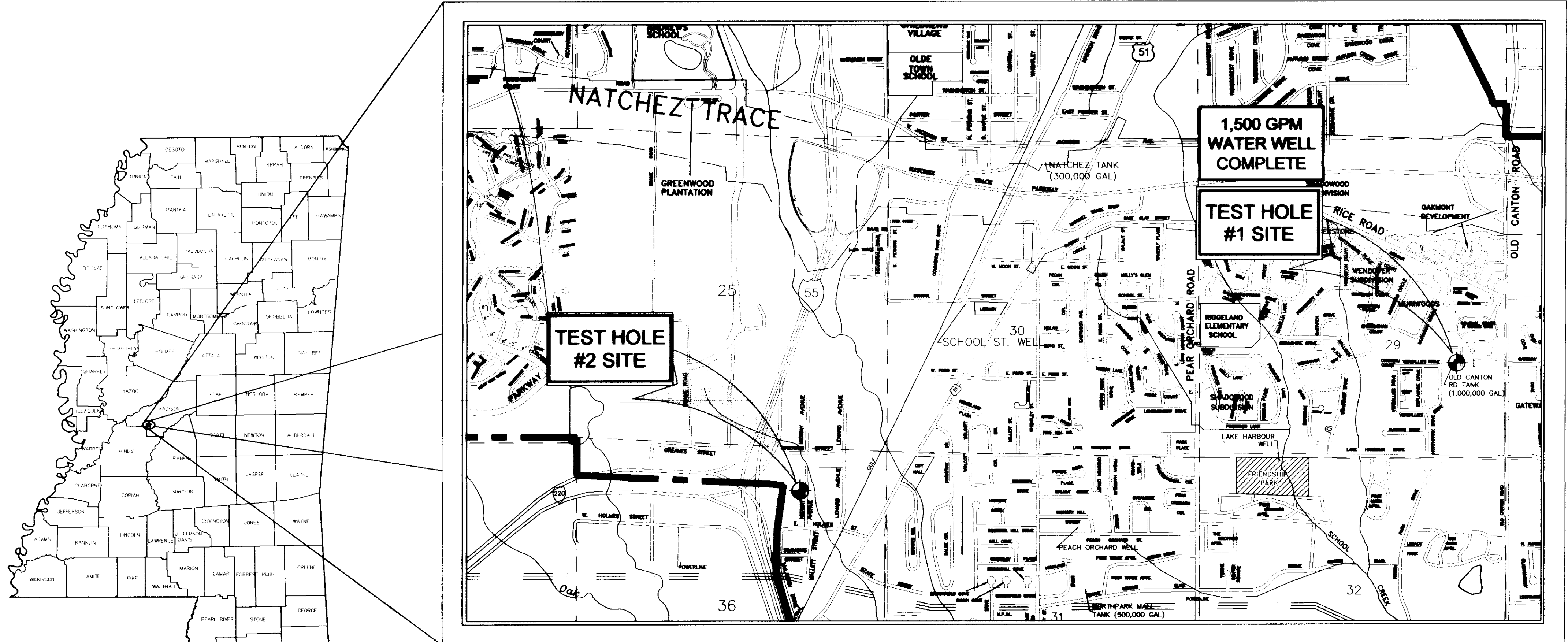
SAM C. VINSON, P.E.

**ASST. DIRECTOR OF PUBLIC WORKS**

SID HAWTHORNE

**PUBLIC WORKS OPERATOR**

DANNY WHITEHEAD



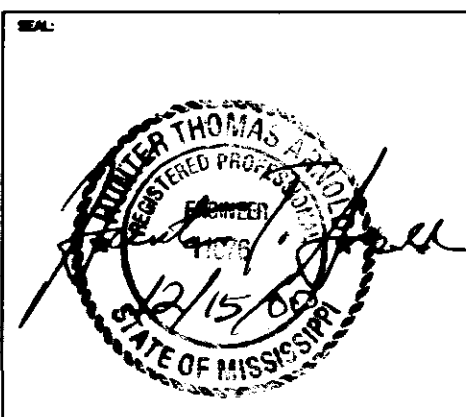
VICINITY MAP  
SCALE: 1" = 1,200'

APRIL, 1999

**CONTRACTOR**  
LAYNE-CENTRAL COMPANY  
4560 HIGHWAY 80 WEST  
JACKSON, MS 39209  
C.O.R. # 181

RECORD DRAWINGS  
DECEMBER 5, 2000

PWP-01525



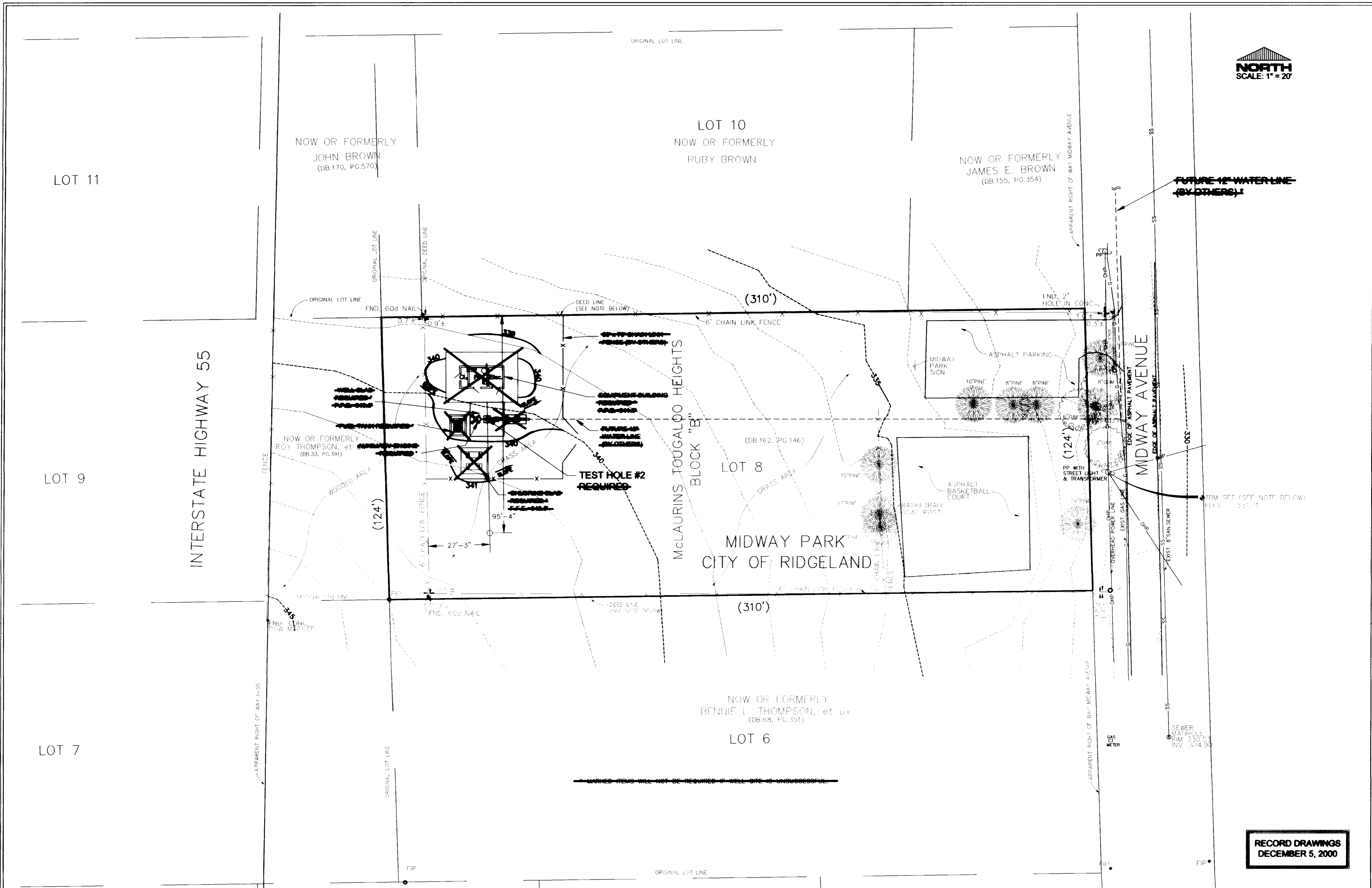






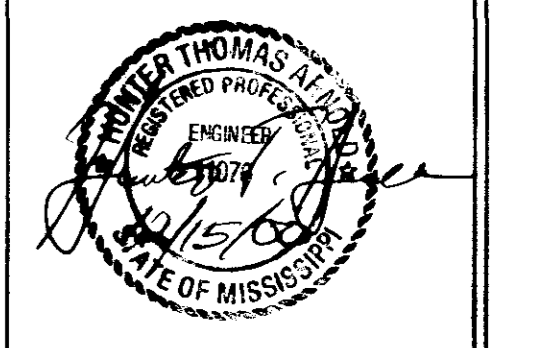
WAGGONER  
ENGINEERING, INC.  
ENGINEERS, PLANNERS, SCIENTISTS

825 N. PRESIDENT ST.  
JACKSON, MS 39202  
601-355-8526  
FAX 601-352-3945



**WATER WELL ON OLD CANTON ROAD / MIDWAY AVENUE  
RIDGELAND, MISSISSIPPI**

DRAWING REVISIONS		
NO.	REMARKS	DATE
1	SEE ADDENDUM 1	4/8/99



**RECORD DRAWINGS  
DECEMBER 5, 2000**

DRAWN BY: B.G., B.G. SCALE: 1" = 20'  
DESIGNED BY: H.A., B.G. DATE: 12/10/98  
CHECKED BY: J.W.M., H.A. PROJECT: 99074

**SITE PLAN FOR  
MIDWAY AVENUE TEST  
HOLE NO. 2**

Situated in Lot 8, Block "B", McLaurins Tougaloo Heights, in the SE 1/4 of Section 20, T2N, R1E, City of Ridgeland, Madison County, Mississippi

Existing Gas Line location by Mississippi One Call.

Overhead Utilities: Electric, Telephone and Cable 1" V as per Mississippi One Call.

This Topographic Survey does not require a boundary survey. The "Deed" line as shown herein was established by the recorded plat of McLaurins Tougaloo Heights, as recorded in Plat Book 27, Page 7.

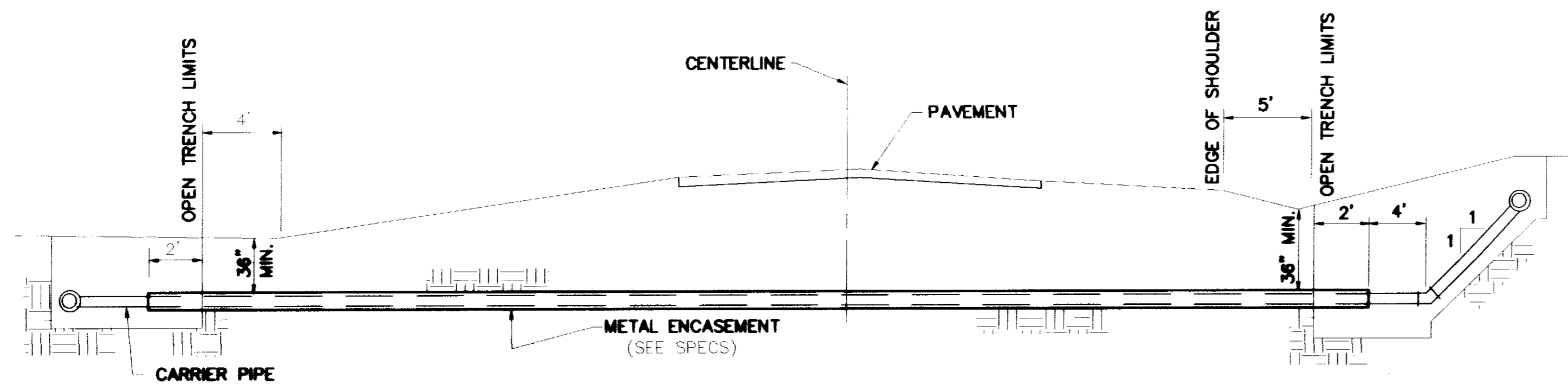
Vertical Datum: Mean Sea Level  
Elevation = 334.26 (NGVD 1929)  
H.M. = Set 80d nail in front porch located on West side of Midway Avenue at approximate mid point on approximate mid point of the East side of subject property.

This property is situated in Flood Hazard Zone A-1 (Outside 500 year flood), according to Flood Insurance Rate Map Community Panel Number 280890320-D Dated April 15, 1994.  
Sold parcel may be subject to recorded, unrecorded or this indexed instruments or facts which would be recorded by a competent title examination of 603 pages.



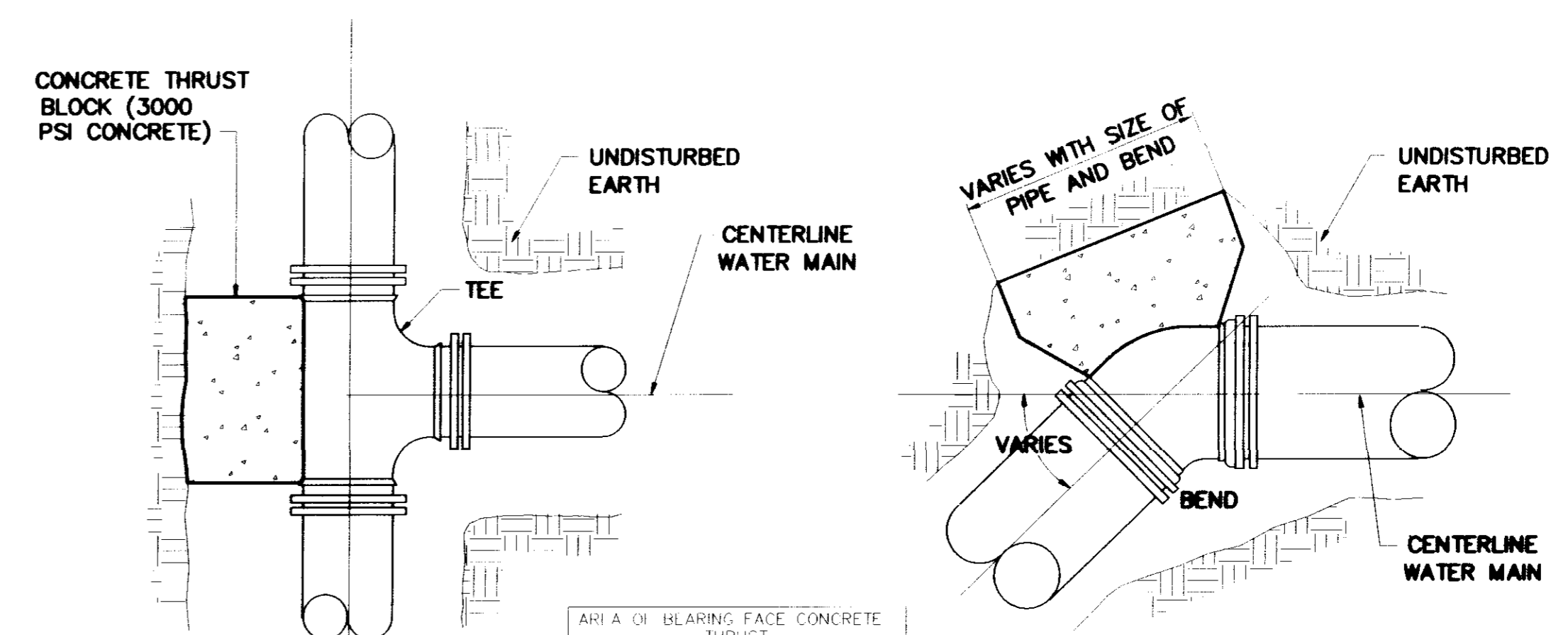






TYPICAL CASED CROSSING

NOTE: COMPENSATION FOR CONCRETE THRUST BLOCKS SHALL BE INCLUDED IN THE UNIT PRICE BID FOR VALVES, FIRE HYDRANTS AND FITTINGS.



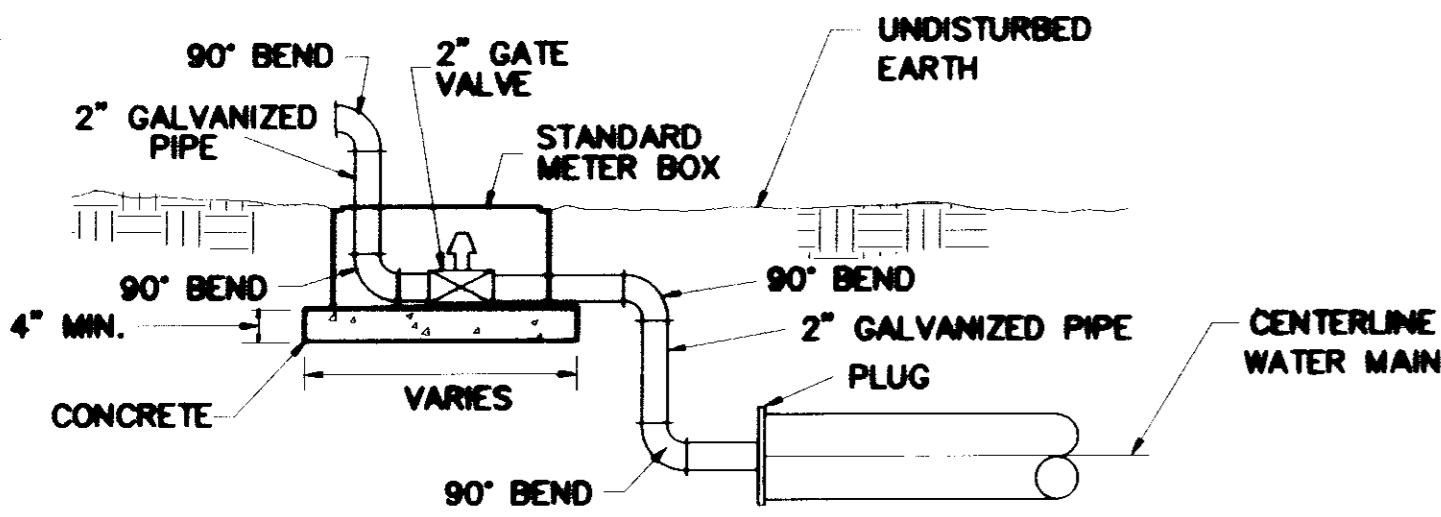
PLAN

PLAN

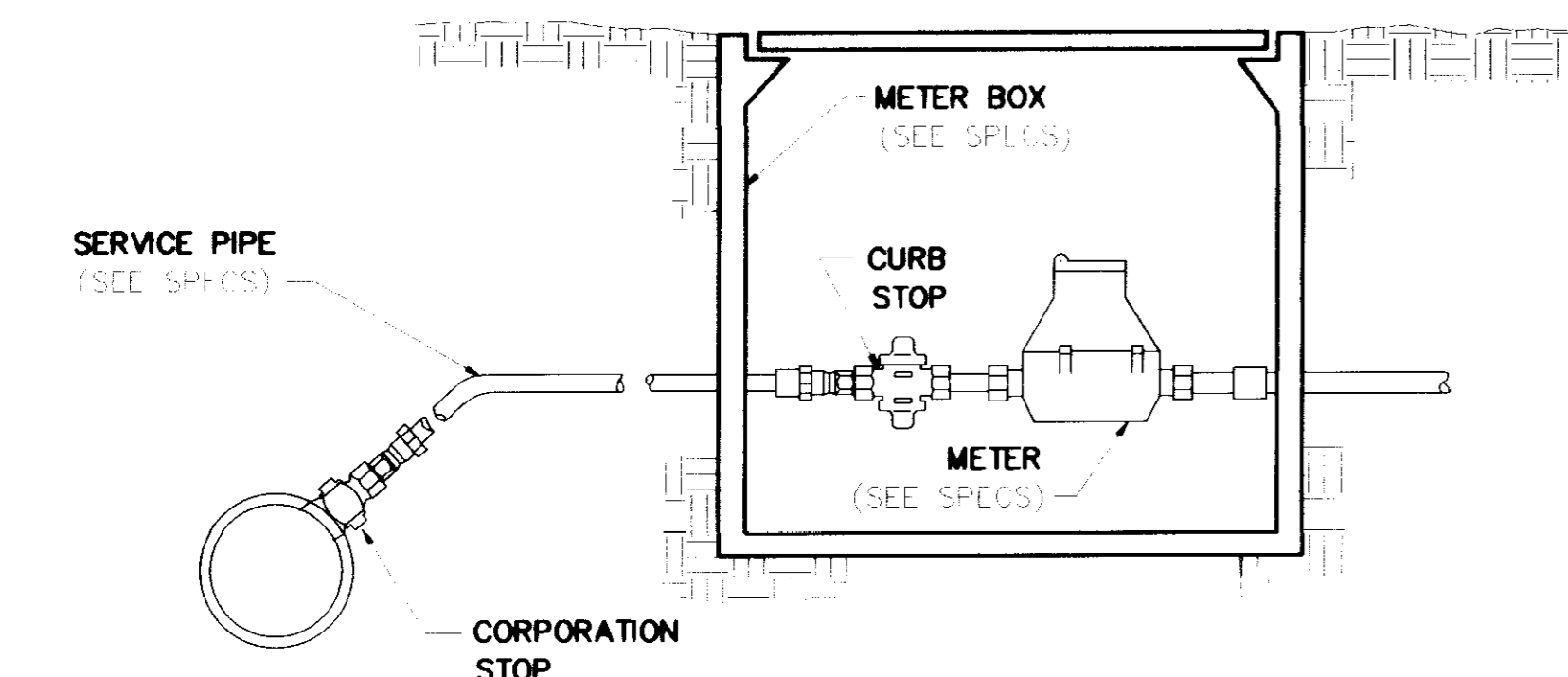
AREA OF BEARING FACE CONCRETE THRUST

PIPE SIZE	1/4 BEND	1/8L BEND	PLUGS & TEES
4-6	3	3	3
8	3	3	3
10	4	3	3
12	6	3	4
16	11	4	7

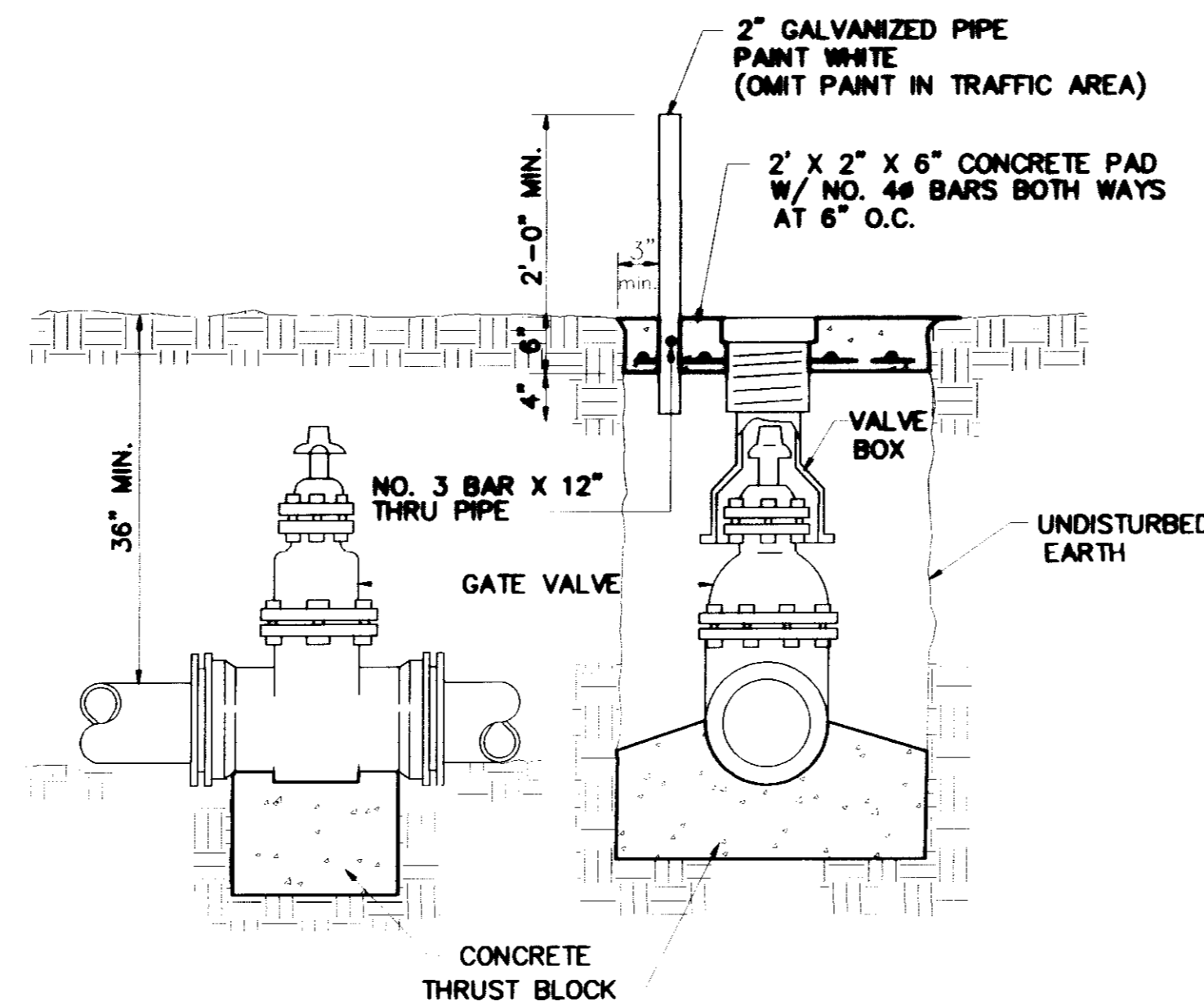
NOTE: AREA OF BEARING FACE IN SQUARE FEET



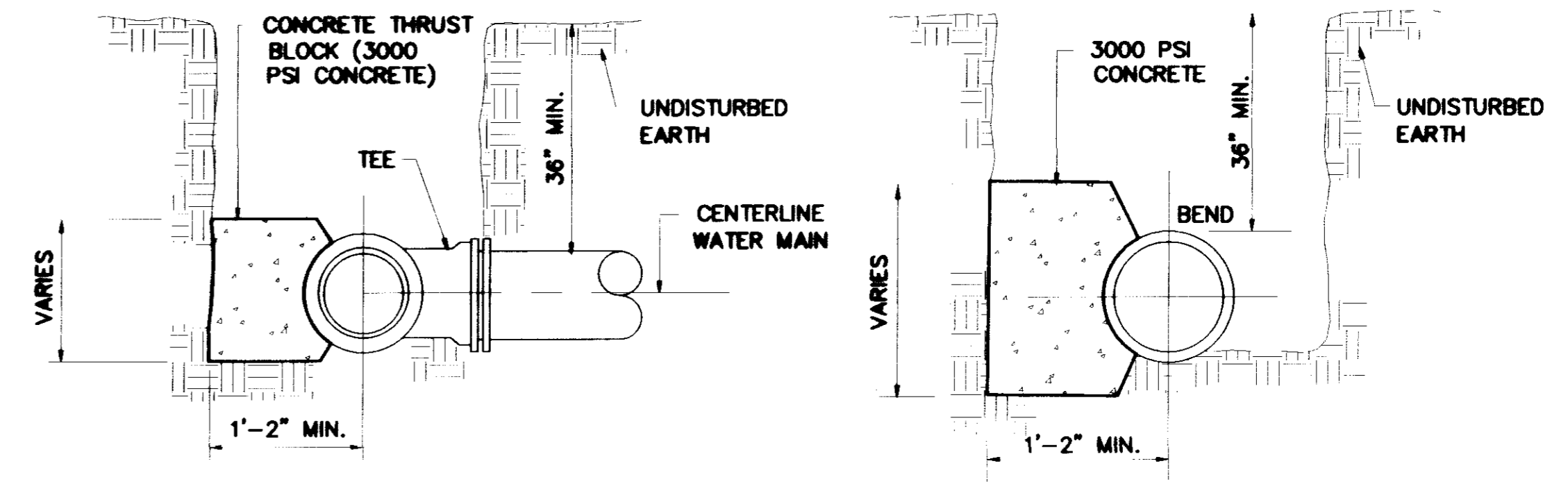
TYPICAL 2" BLOW-OFF DETAIL



TYPICAL SERVICE ASSEMBLY



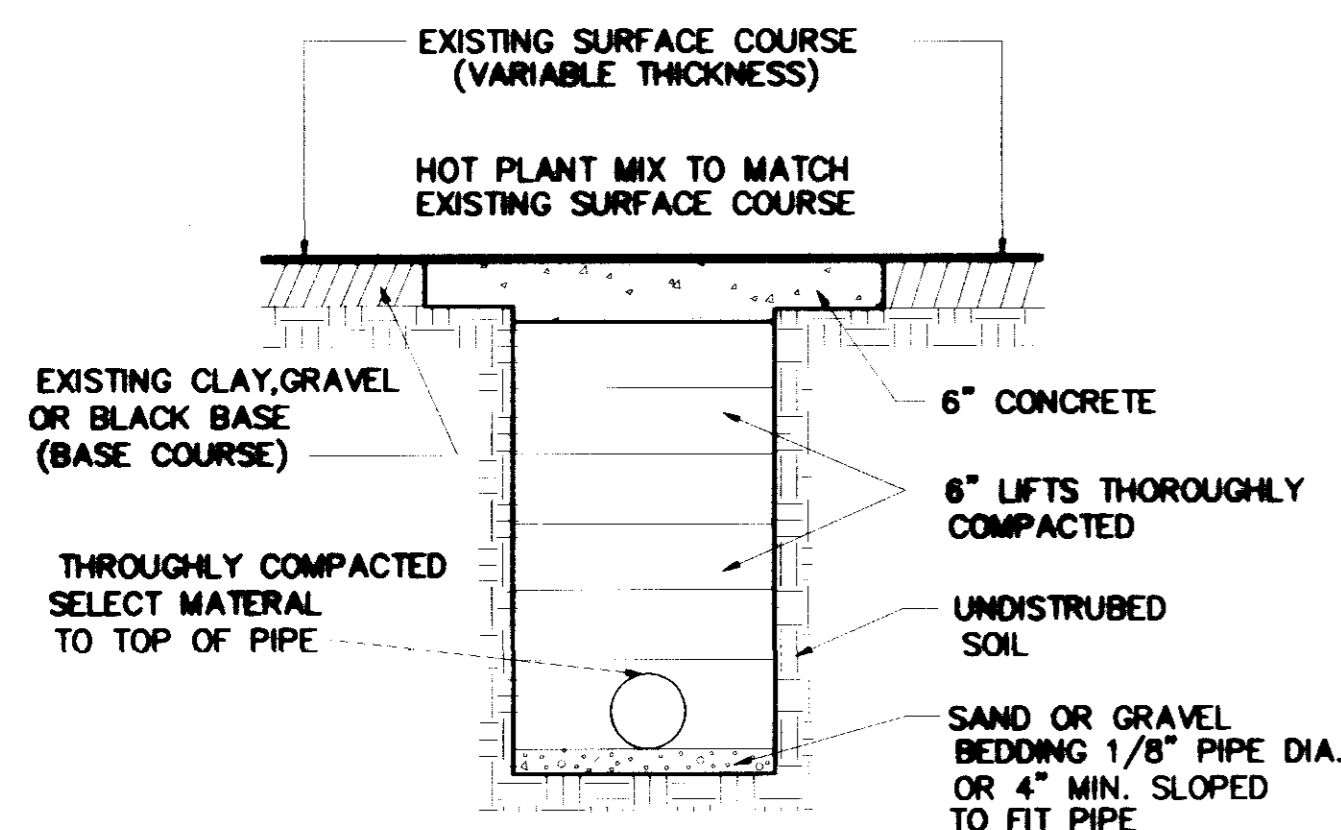
ELEVATION SECTION  
TYPICAL VALVE & BOX



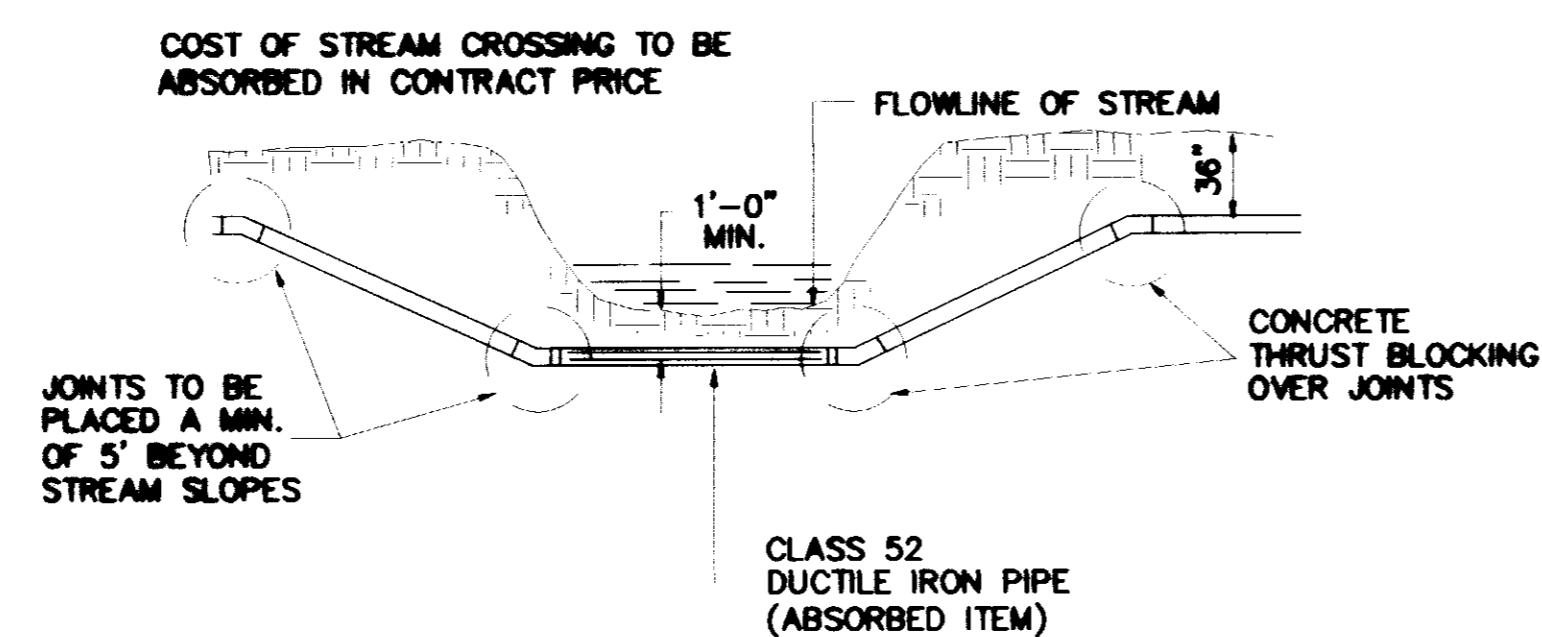
SECTION

SECTION

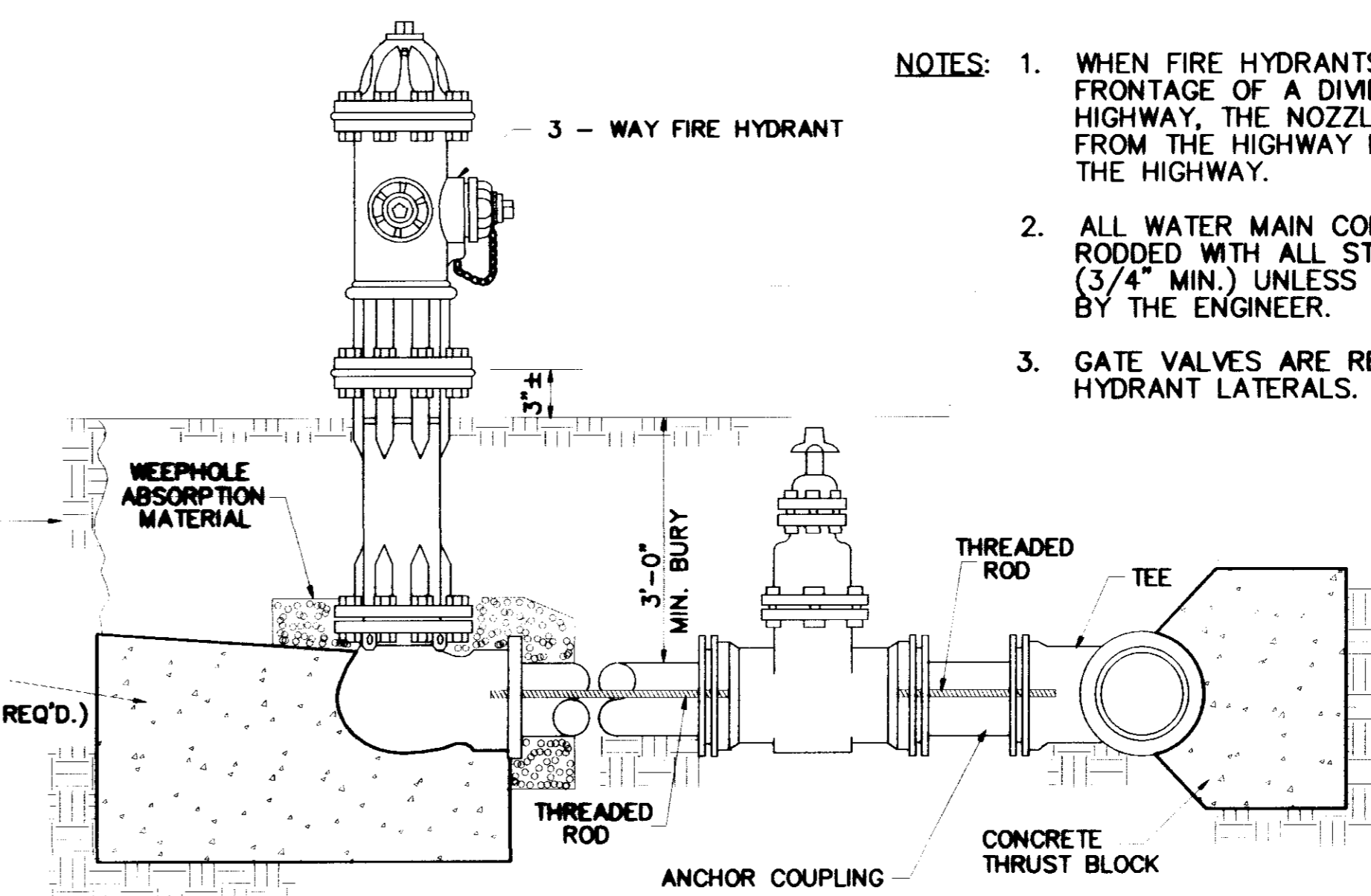
BLOCKING DETAILS FOR TEES & BENDS



STREET REPAIR OF OPEN CUT



TYPICAL STREAM CROSSING



TYPICAL FIRE HYDRANT

- NOTES:
1. WHEN FIRE HYDRANTS ARE PLACED ON THE FRONTAGE OF A DIVIDED OR MULTI-LANE HIGHWAY, THE NOZZLES SHALL FACE AWAY FROM THE HIGHWAY RATHER THAN TOWARD THE HIGHWAY.
  2. ALL WATER MAIN CONNECTIONS SHALL BE RODDED WITH ALL STEEL THREADED RODS (3/4" MIN.) UNLESS OTHERWISE INSTRUCTED BY THE ENGINEER.
  3. GATE VALVES ARE REQUIRED ON ALL FIRE HYDRANT LATERALS.

RECORD DRAWINGS  
DECEMBER 5, 2000

DRAWING REVISIONS		
NO.	REMARKS	DATE

Handwritten signature and date: 12/15/00

DRAWN BY:	C.S.	SCALE:	AS SHOWN
DESIGNED BY:	H.A.	DATE:	12/2/00
CHECKED BY:	E.C.	PROJECT:	08074
PAN. NAME:	WAGGONER ENGINEERING, INC.		
DRAWING TITLE:			

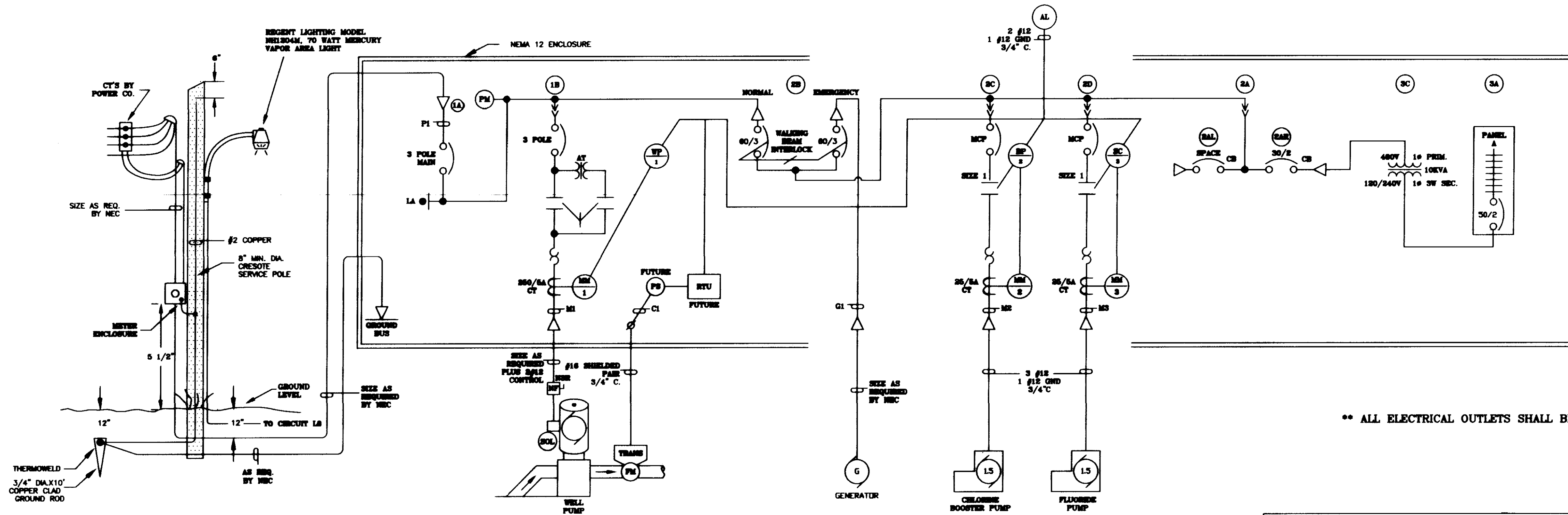
WATER STANDARD DETAILS







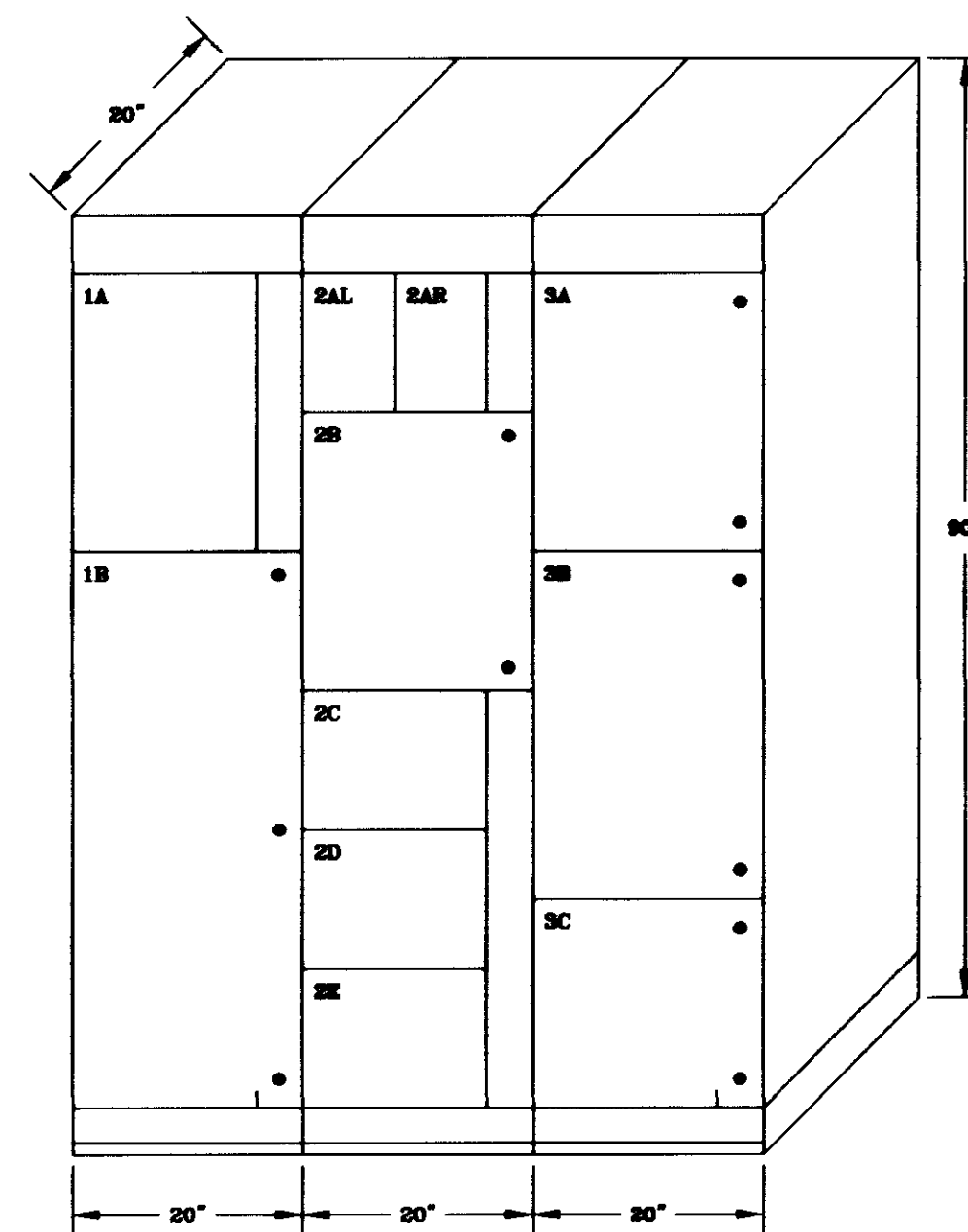
MOTOR CONTROL CENTER  
ONE LINE POWER DIAGRAM  
PROCESS AND INSTRUMENTATION DIAGRAM



\*\* ALL ELECTRICAL OUTLETS SHALL BE WATERPROOF \*\*

PANEL "A" SCHEDULE											
CIRCUIT NUMBER	WIRE SIZE	BREAKER SIZE	DESCRIPTION OF LOAD	LOAD			DESCRIPTION OF LOAD	BREAKER SIZE	WIRE SIZE	CIRCUIT NUMBER	
				A	B	LOAD					
1		15A	CONTROL POWER	10	15	5	BLDG. EXH. FAN	15A	#12	2	
3	#12	15A	BUILDING LIGHTS	7	12	5	OUTSIDE LIGHTING	15A	#12	4	
5	#12	15A	BLDG. HEAT LAMPS	5	20	15	BLDG. RECEPTACLES	15A	#12	6	
7		15A	SPARE	15	15	3	AREA LIGHT	15A	#12	8	
9		15A	SPARE	15	15		SPACE			10	
11		15A	SPARE	15	15	15	SPACE			12	
TOTAL				50	45		SERVICE CHARACTERISTICS:				
GRAND CONNECTED TOTAL							50/2 MB 120/240 VOLT 14, 3W PROVIDE GROUND BUS				

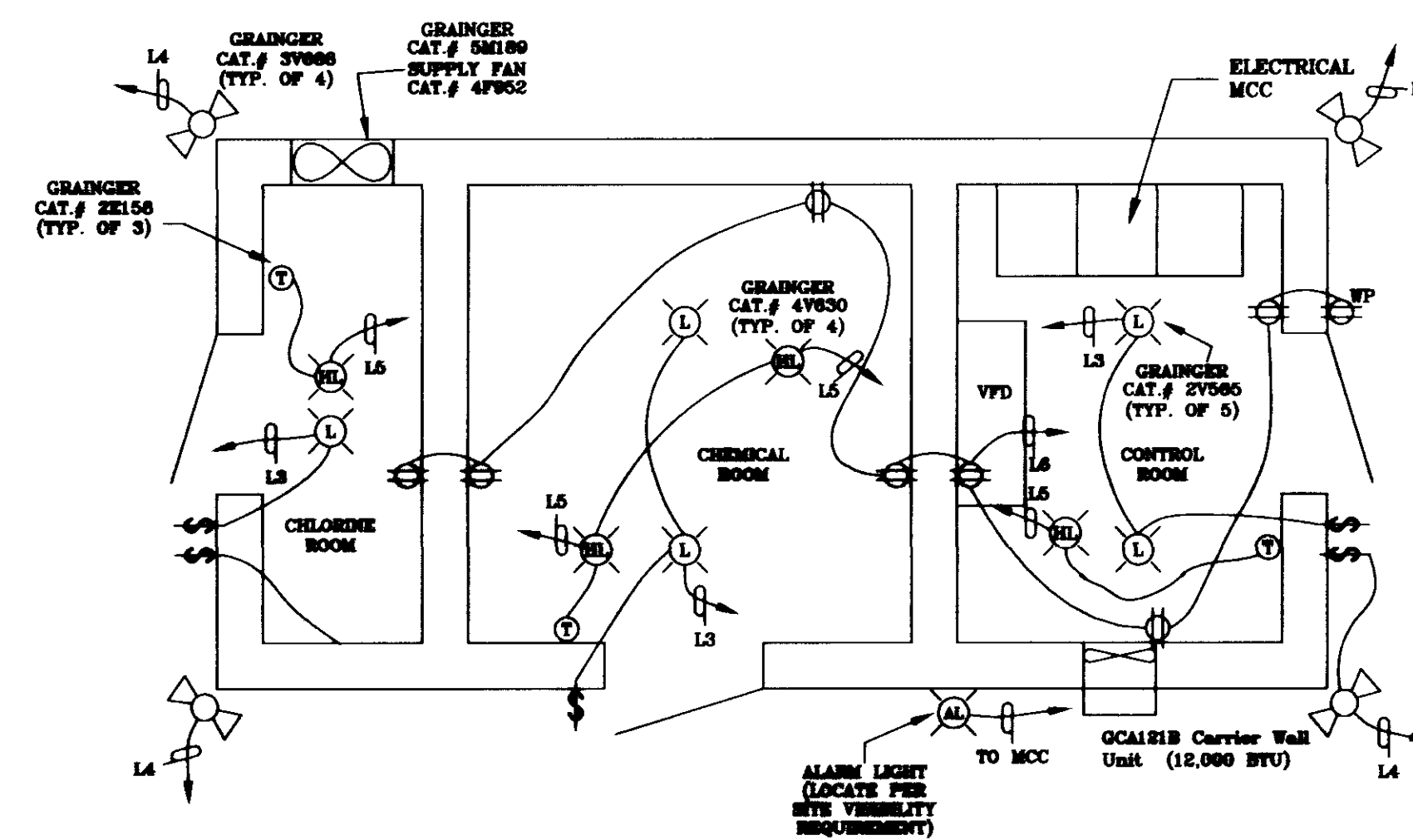
MOTOR CONTROL CENTER  
PHYSICAL LAYOUT



LEGEND

- CHLORINE BOOSTER PUMP CONTROLLER - SEE COMPONENT SPECIFICATIONS
- FLUORIDE PUMP CONTROLLER - SEE COMPONENT SPECIFICATIONS
- CURRENT TRANSFORMER - SEE COMPONENT SPECIFICATIONS
- COMMON ALARM LIGHT - SEE COMPONENT SPECIFICATIONS
- MOTOR MONITOR - SEE COMPONENT SPECIFICATIONS
- POWER SUPPLY - SEE COMPONENT SPECIFICATIONS
- FLOWMETER - SEE COMPONENT SPECIFICATIONS
- WELL PUMP CONTROLLER - SEE COMPONENT SPECIFICATIONS
- PHASE MONITOR - SEE COMPONENT SPECIFICATIONS
- LIGHTNING ARRESTOR - SEE COMPONENT SPECIFICATIONS

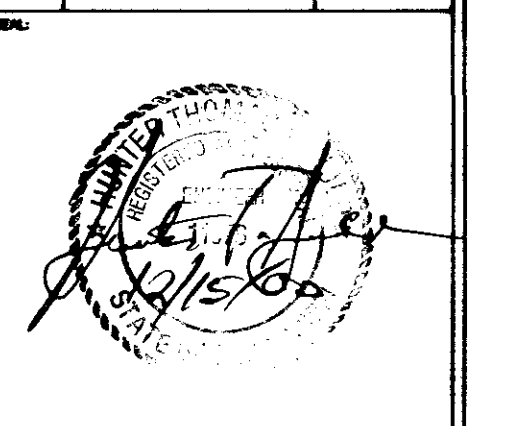
MAGNETIK GPD 508V-5302  
480 V. VARIABLE FREQUENCY DRIVE  
w/ BYPASS



RECORD DRAWINGS  
DECEMBER 5, 2000

WATER WELL ON OLD CANTON ROAD / MIDWAY AVENUE  
RIDGELAND, MISSISSIPPI

DRAWING REVISIONS		
NO.	REMARKS	DATE
1	SEE ADDENDUM 1	4/8/99



DESIGNED BY: C.S.I. DATE: 03/08/99  
CHECKED BY: H.A. PROJECT: 98074  
PANEL NAME: PUMP/FA-2-20-20-20-20-20-20  
DRAWING TITLE:

ELECTRICAL  
CONTROLS