

# CONTRACT DRAWINGS

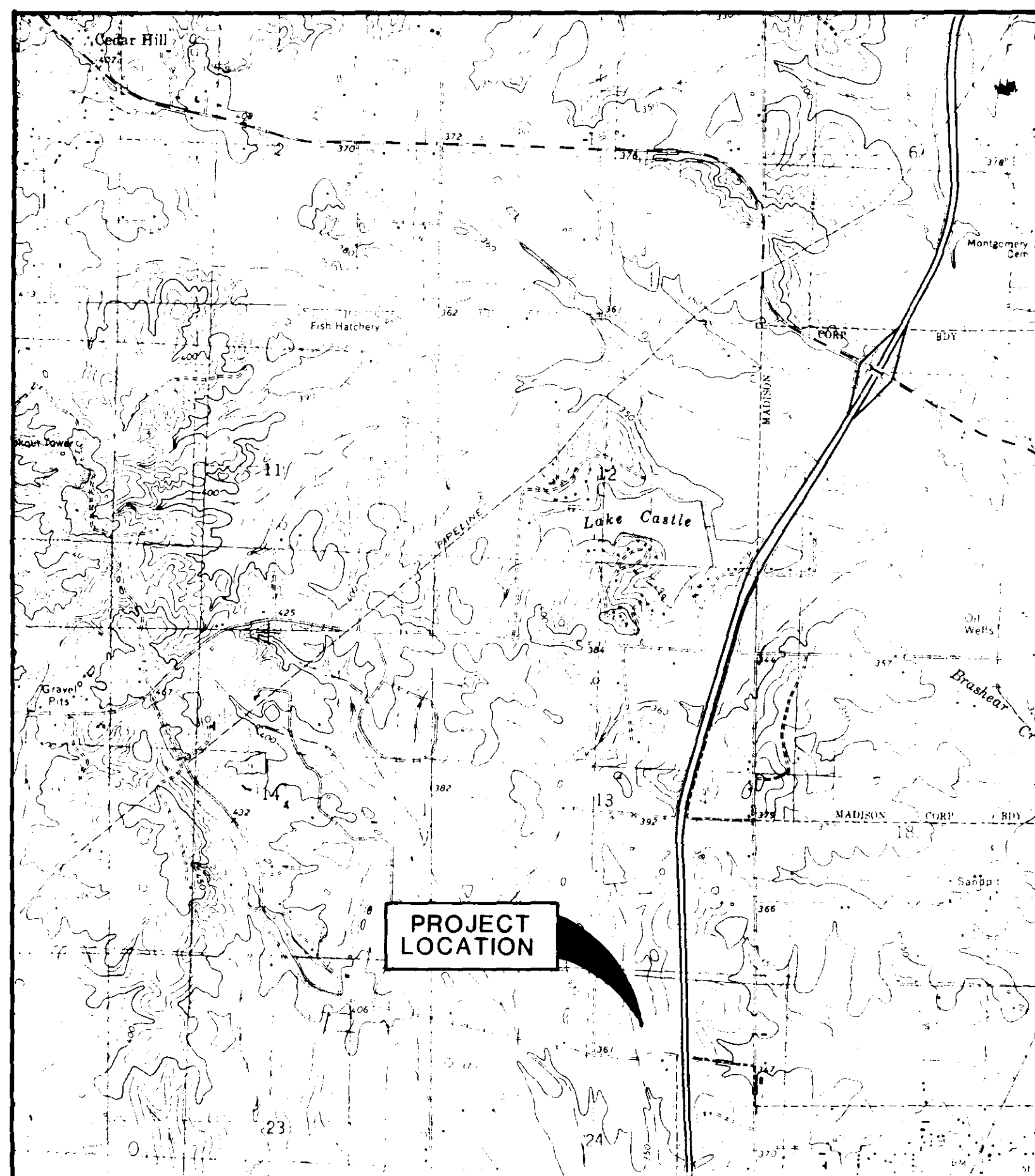
## FOR

# PARKWAY PLACE

STREET AND DRAINAGE

### INDEX TO DRAWINGS

SHEET NO.	DESCRIPTION
1	COVER SHEET
2	PLAN - PROFILE SHEET
3	DRAINAGE DETAILS



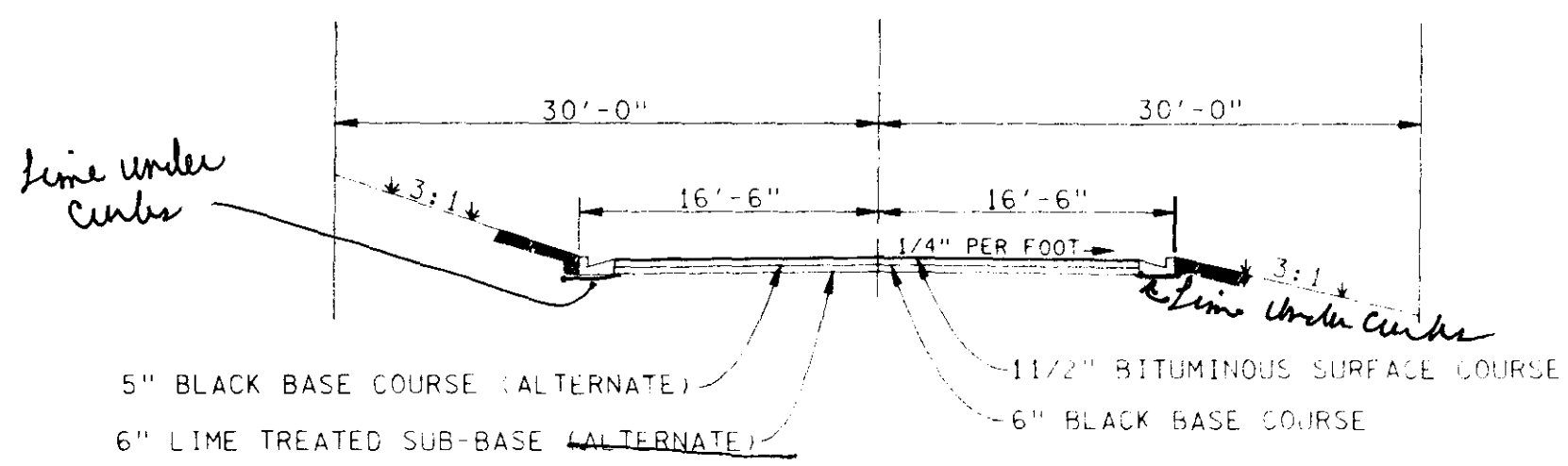
**VICINITY MAP**

ITEM NO.	ITEM DESCRIPTION	ESTIMATED QUANTITY	UNIT
<b>STREET AND DRAINAGE</b>			
100-1	CLEARING AND GRUBBING	0.6	AC
200-1	EXCAVATION - COMMON	230	CY
200-2	EXCAVATION - UNDERCUT & BACKFILL	300	CY
200-3	EMBANKMENT	930	CY
300-1	6" LIME TREATED SUB-BASE (ALT.)	1730	SY
400-1	5" BLACK BASE COURSE (ALT.)	1730	SY
400-2	6" BLACK BASE COURSE	1730	SY
400-3	1 1/2" BITUMINOUS SURFACE COURSE	1730	SY
500-1	CONCRETE CURB & GUTTER (w/ TURN-OUT)	960	LF
600-1	CURB INLET	3	EA
600-2	15" REINFORCED CONCRETE PIPE	33	LF
600-3	18" REINFORCED CONCRETE PIPE	51	LF
600-4	24" REINFORCED CONCRETE PIPE	92	LF
600-5	8' x 4' CONCRETE BOX CULVERT	48	LF
600-6	ROCK RIP-RAP	15 <sup>00</sup>	TONS
600-7	REMOVE EXISTING CURB & GUTTER	92	LF
600-8	15" PVC PIPE SLEEVE	62	LF
1100-1	SEEDING	0.6	AC

DISAPPROVED \_\_\_\_\_  
 APPROVED \_\_\_\_\_  
 APPROVED AS NOTED \_\_\_\_\_  
 REVIEWED FOR GENERAL CONFORMANCE TO THE PLANS AND SPECIFICATIONS. THE CITY OF RIDGELAND DOES NOT VERIFY THE ACCURACY OF THIS DATA AND APPROVAL DOES NOT RELIEVE THE CONTRACTOR OF HIS RESPONSIBILITY FOR SUCH ACCURACY AND CONFORMANCE TO PLANS AND SPECIFICATIONS.

CITY OF RIDGELAND, MS  
 PUBLIC WORKS DEPARTMENT

Date: 9-22-92 By: [Signature]



TYPICAL STREET SECTION "A-A"

*to the 100% Design for 100% Flood in the Channel*

HIGHLAND COLONY PARKWAY (UNDER CONSTRUCTION)

**Δ** 22°45'03"  
 R= 345.00'  
 L= 136.99'  
 C= 136.09'  
 T= 69.41'

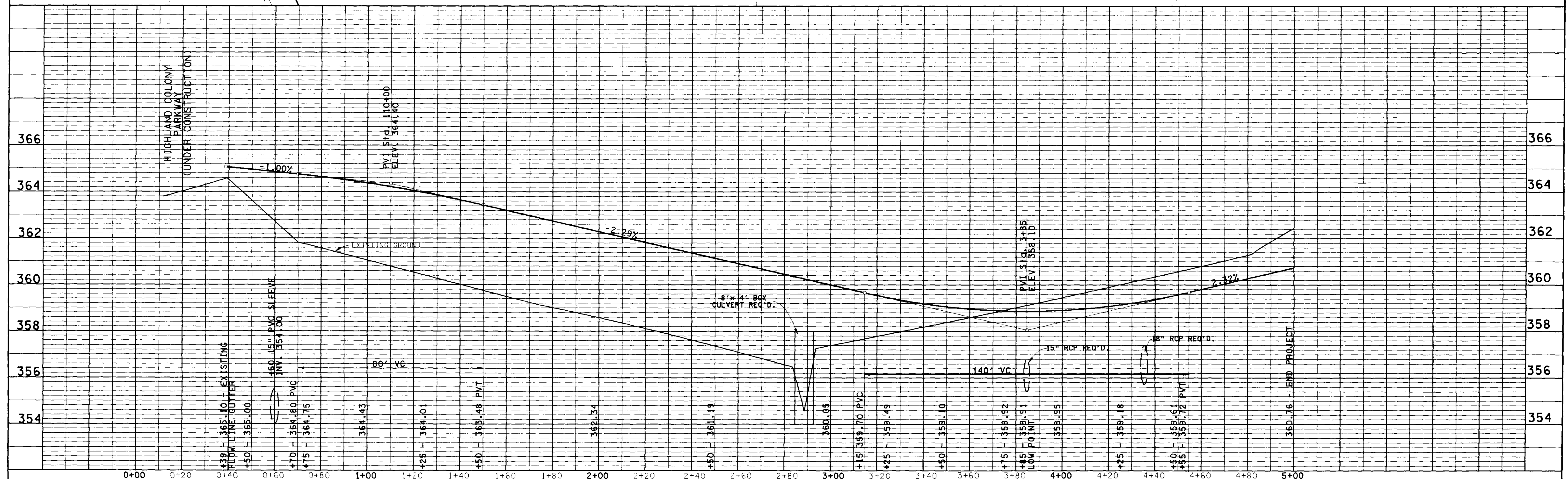
**Δ** 83°28'44"  
 R= 245.00'  
 L= 356.96'  
 C= 326.21'  
 T= 218.59'

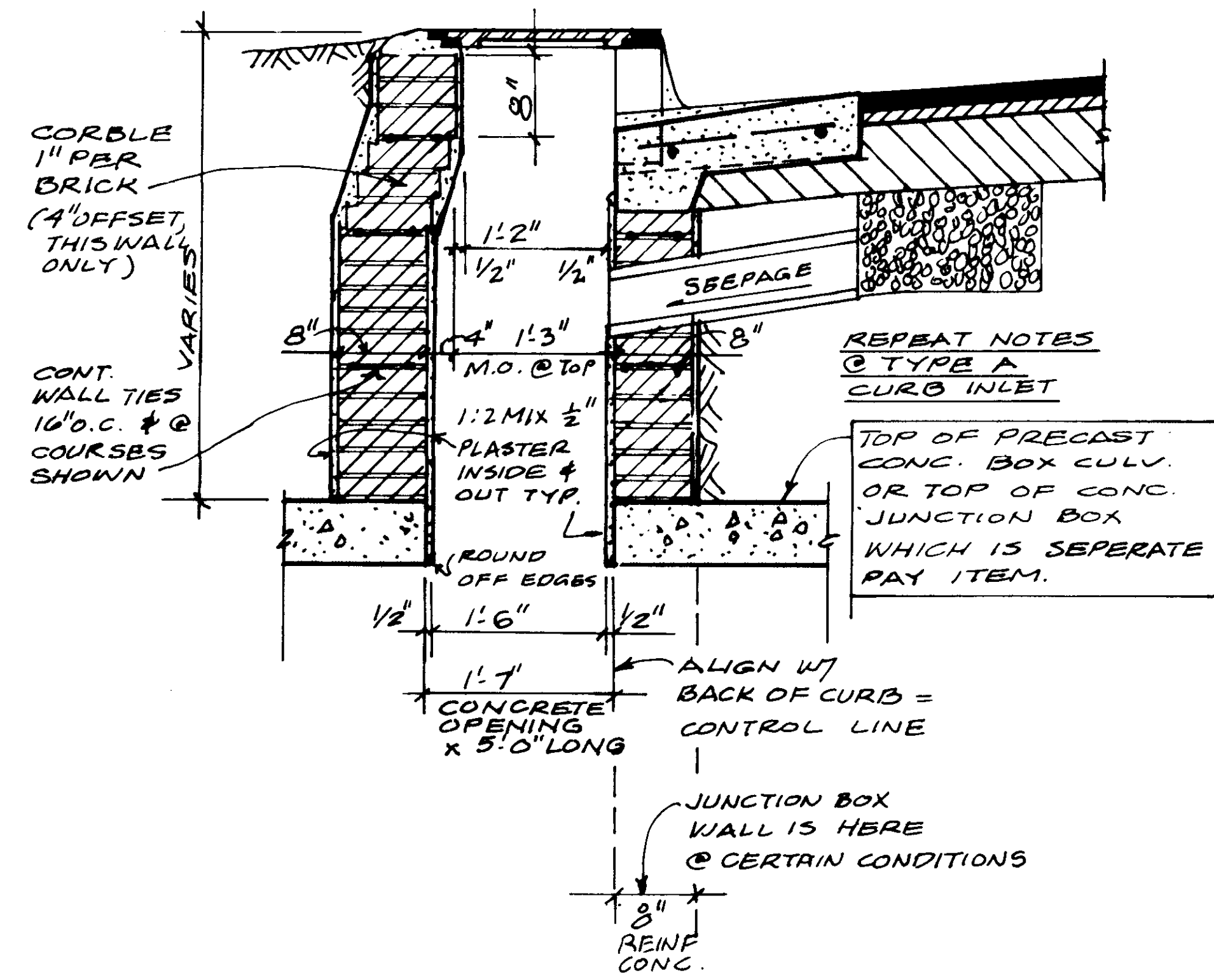
+10 PROPOSED DRIVE OF HEDERMAN DRIVE BE DETERMINED BY THE ENGINEER



SCALE:  
 1" = 20' HORIZONTAL  
 1" = 2' VERTICAL

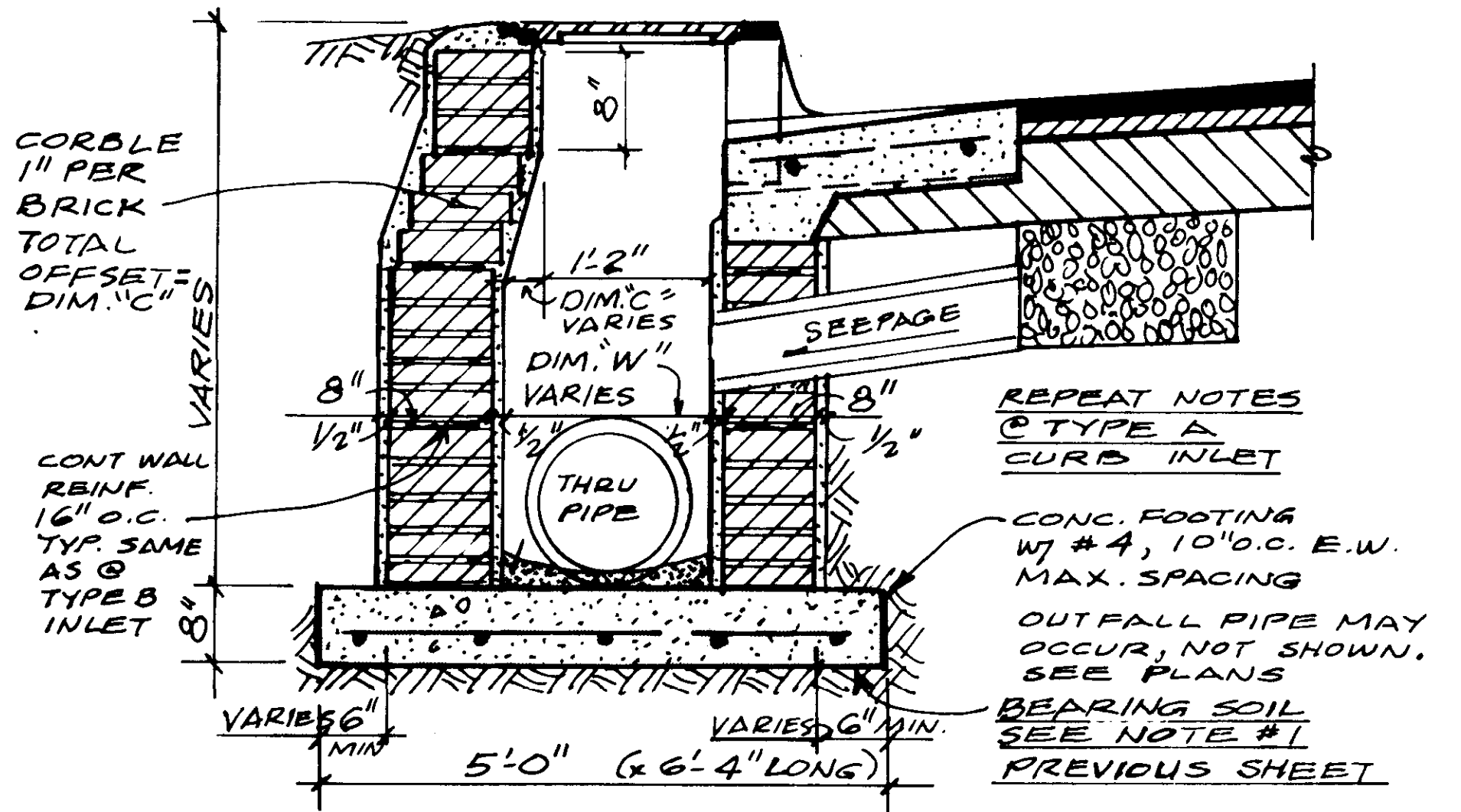
PARKWAY PLACE





**CURB INLET TYPE B**

SCALE: 1" = 1'-0"

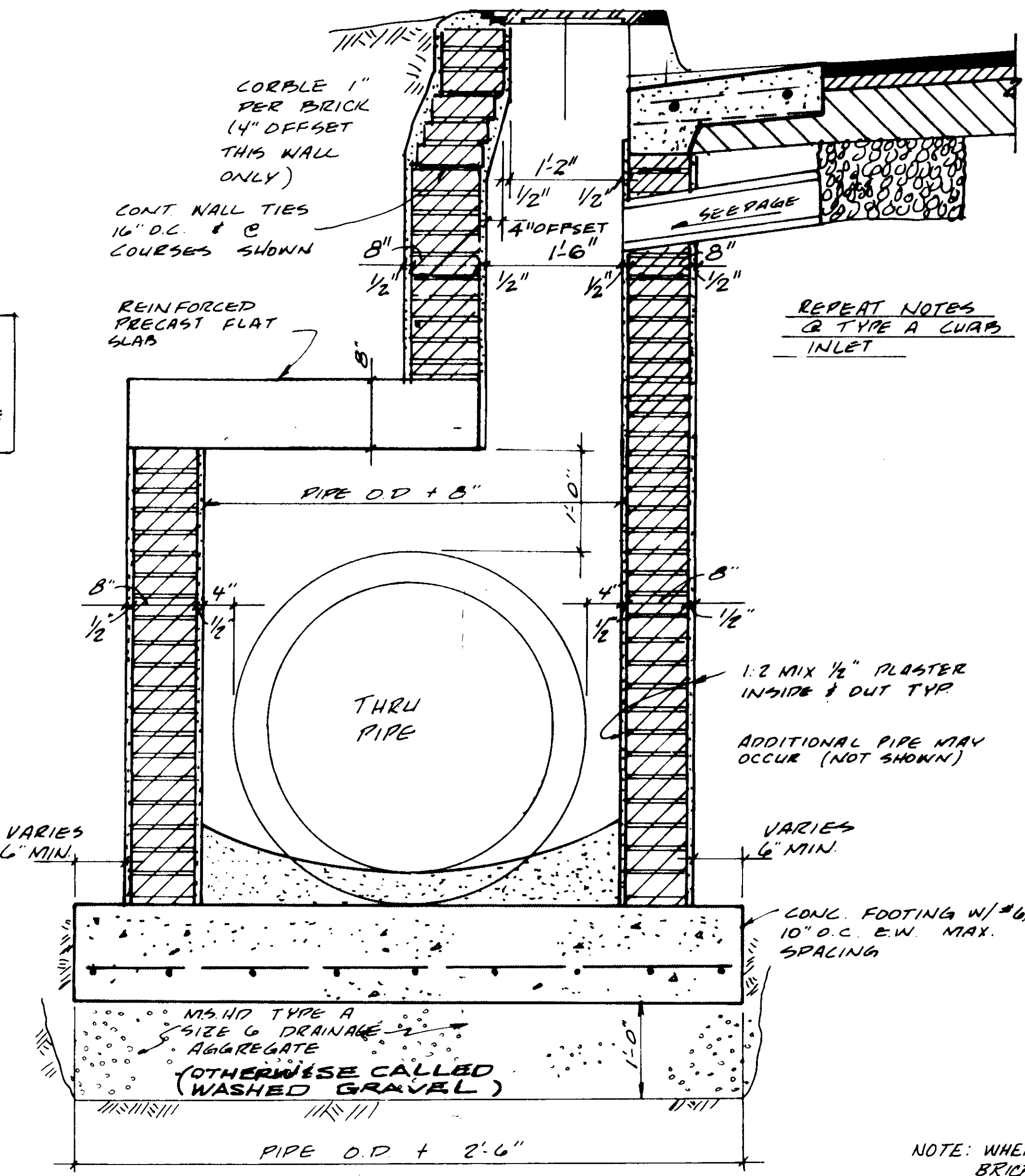


**CURB INLET TYPE C**

SCALE: 1" = 1'-0" (FOR THRU PIPES 15", 18" OR 21" DIA.)

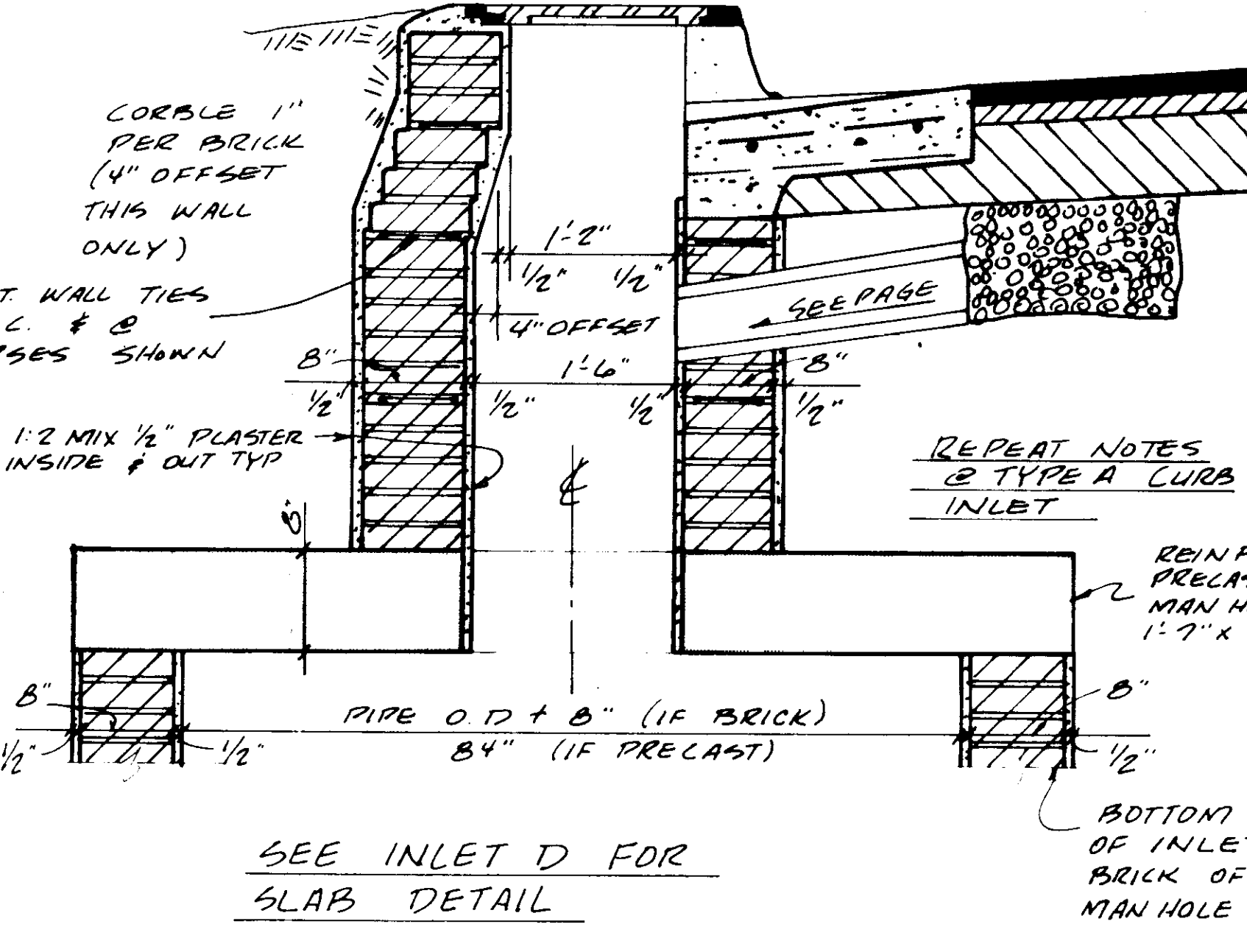
PIPE I.D. *	DIM. "W" PLASTER TO PLAST. FINISHED WIDTH	DIM. "C" CORBEL OFFSET	NOTES FOR CORBELS
15"	2'-1"	1 1/4"	11 BRICK @ 1" CORBEL EA.
18"	2'-5"	1'-2"	14 BRICK @ 1" CORBEL EACH
21"	2'-7"	1'-5"	17 BRICK @ 1" CORBEL EACH

\* LARGEST PIPE @ INLET



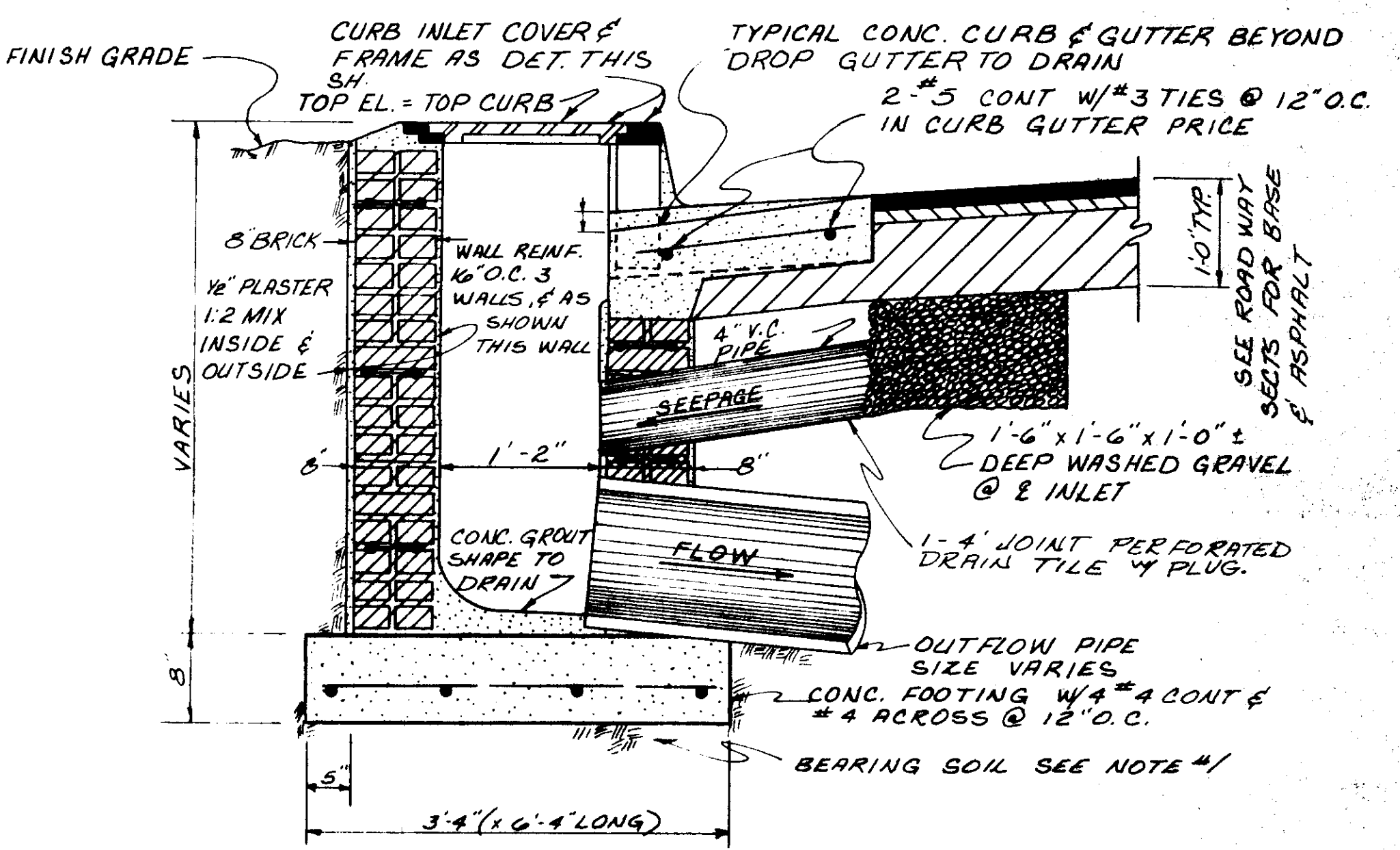
**CURB INLET TYPE D**

SCALE: 1" = 1'-0" (FOR THRU PIPES 24" TO 36" DIA.)



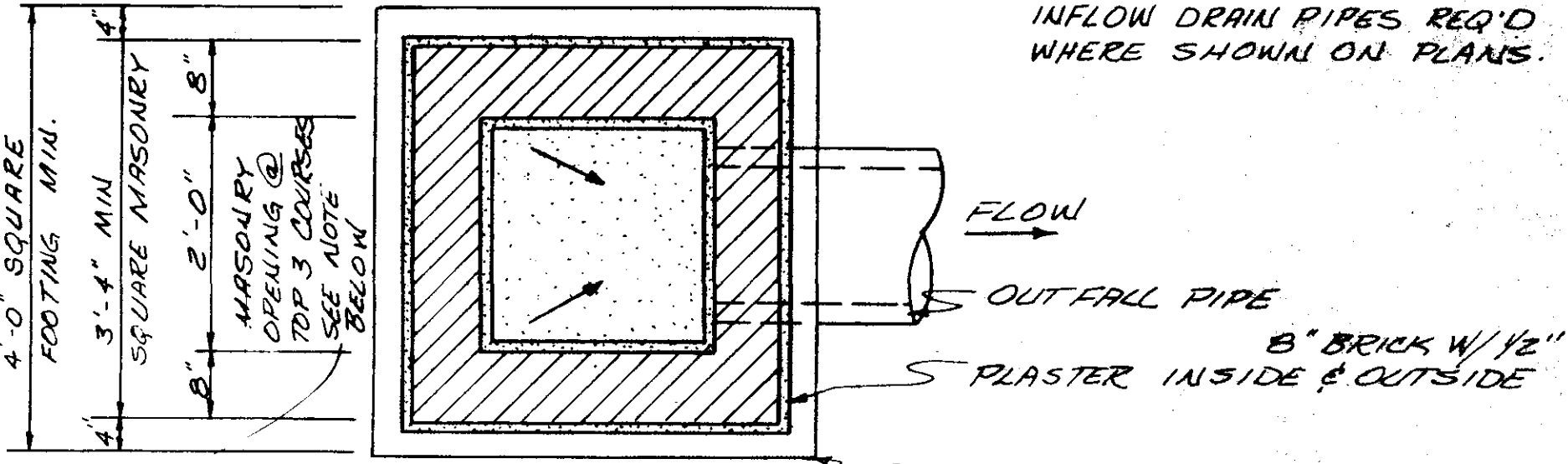
**CURB INLET TYPE E**

SCALE: 1" = 1'-0" (FOR THRU PIPES 42" AND UP)



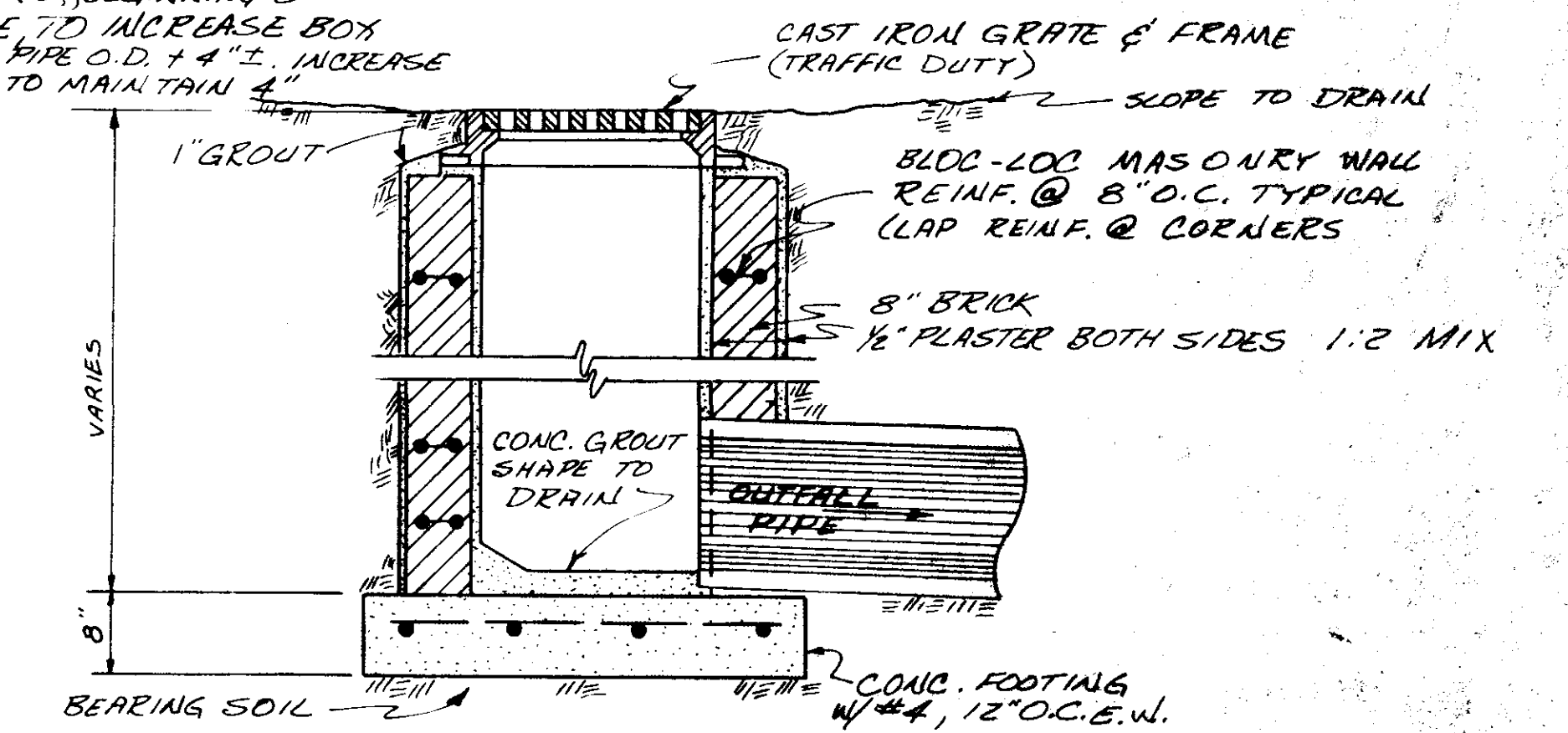
**CURB INLET TYPE A**

SCALE: 1" = 1'-0"  
NOTE: 4" DIA X 4'-0" LONG PIPE AND WASHED GRAVEL INCLUDED W/ COST OF INLET.



**PLAN SECTION**

NOTE: WHERE 24" DIA. PIPE OCCURS CORBEL BRICK BACK 1" PER BRICK, BEGINNING 8" BELOW GRATE FRAME TO INCREASE BOX SIZE TO ACCOMMODATE PIPE O.D. + 4" ±. INCREASE FOOTING AS REQ'D. TO MAINTAIN 4" ±.



**GRATE INLET**

**TYPICAL INLET DETAILS**