

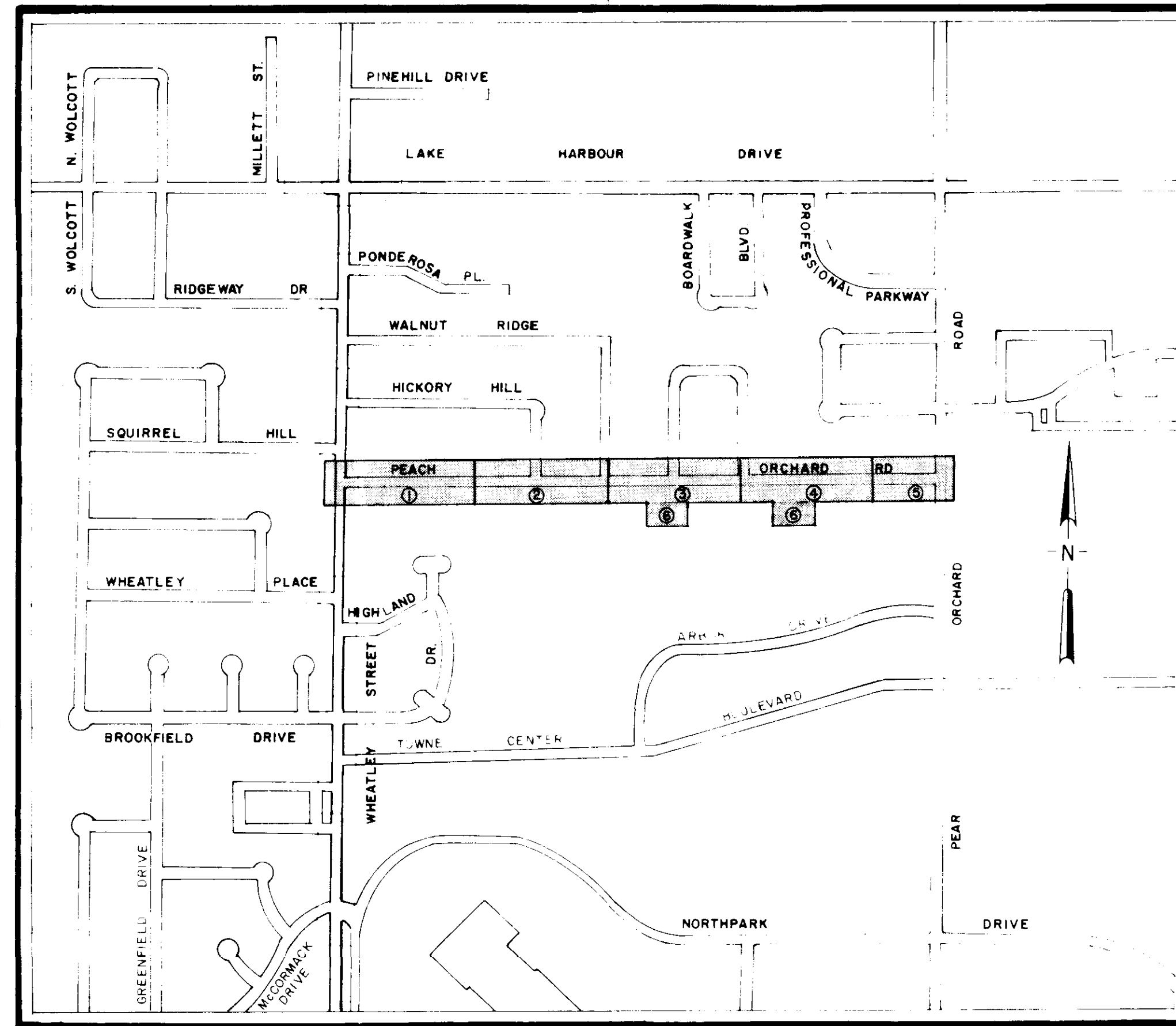
CITY OF RIDGELAND, MISSISSIPPI

PEACH ORCHARD ROAD DRAINAGE IMPROVEMENTS AND ROADWAY RECONSTRUCTION

Mayor:
Hite B. Wolcott

Mayor Pro Tem:
Hilda Boyd

City Attorney:
Milton Case



Aldermen:

Al Bible
Hilda Boyd
Harvey Carr, Jr.
Gene McGee
Gilbert Sollek

Public Works Director:
Horace M. Ross

SHEET INDEX
1-5 — PLAN PROFILE
4 — TYPICAL STREET SECTION
6 — DITCH DETAIL
7 — INLET DETAILS

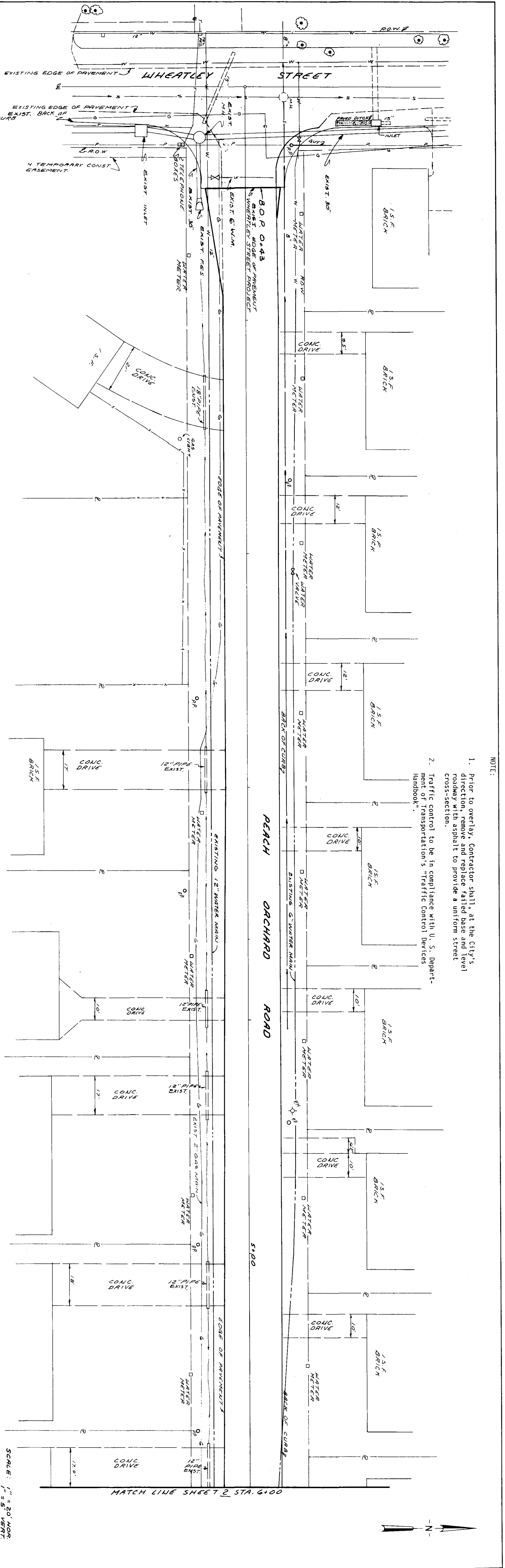
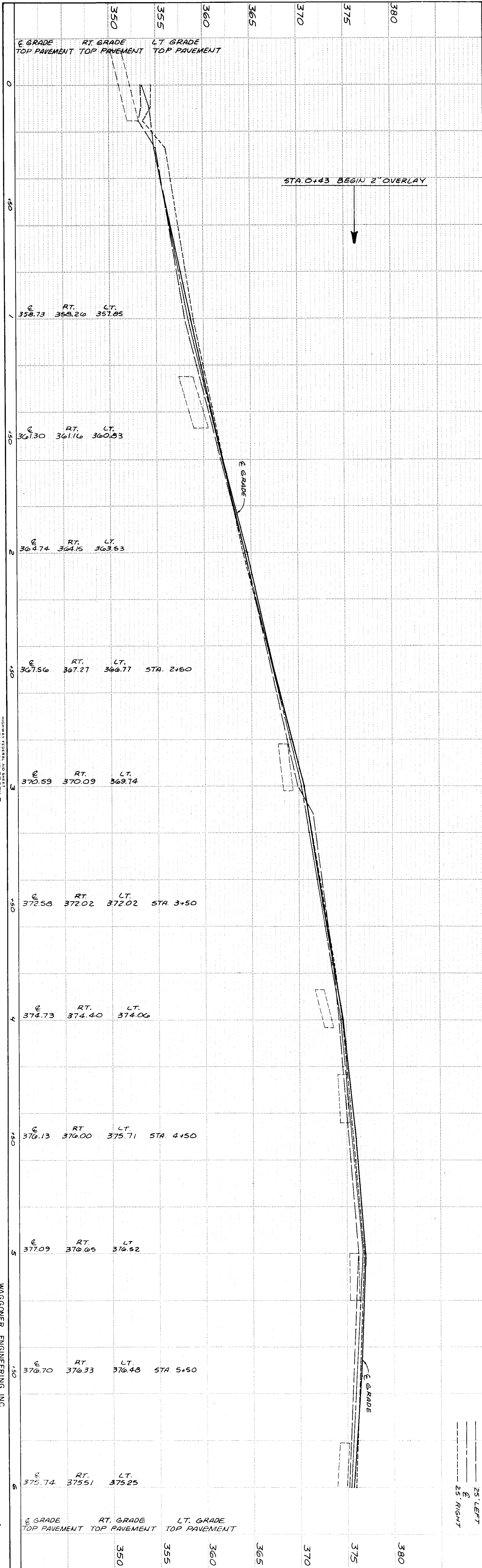
OCTOBER 1988

WAGGONER ENGINEERING INC.
Consulting Engineers
Jackson / Brandon, MS

Peach Orchard
PWP-1601

PROFILE	BY	DATE
SURVEYED		
PLOTTED		
GRADES CHECKED		
B. M.'S. NOTED		
STRUCTURE NOTATIONS CHECKED		

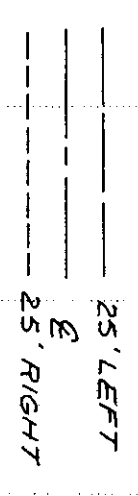
PLAN	BY	DATE
SURVEYED		
PLOTTED		
ALIGNMENT CHECKED		
RT. OF WAY CHECKED		



- NOTE:
1. Prior to overlay, Contractor shall, at the City's direction, remove and replace failed base and level roadway with asphalt to provide a uniform street cross-section.
 2. Traffic control to be in compliance with U. S. Department of Transportation's "Traffic Control Devices Handbook".

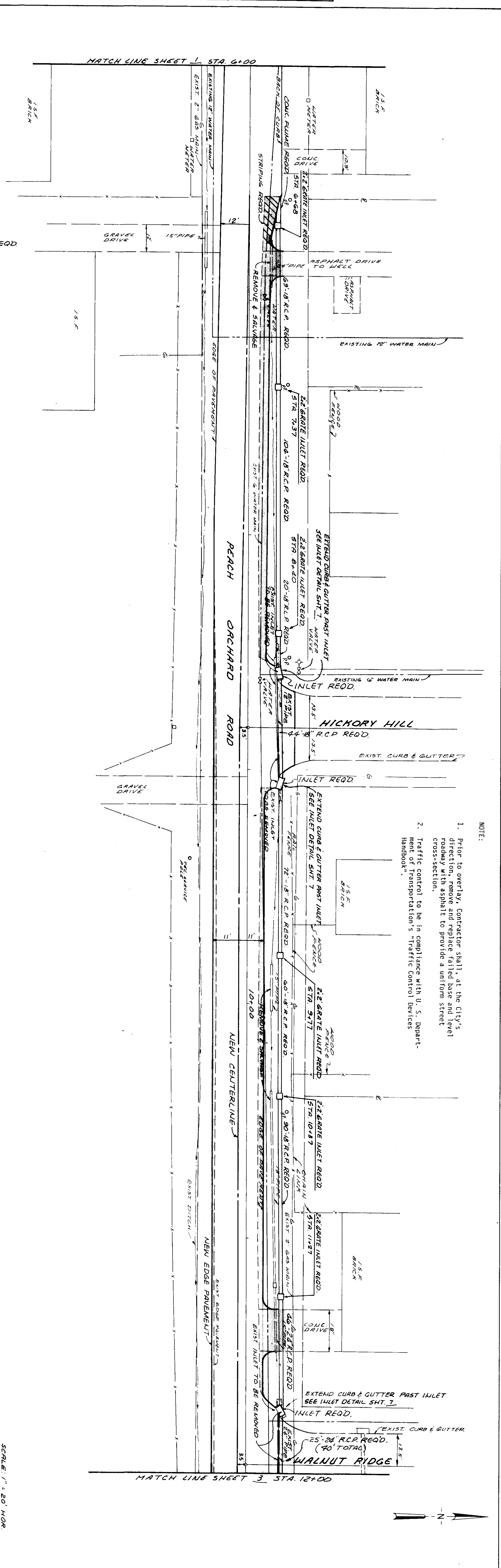
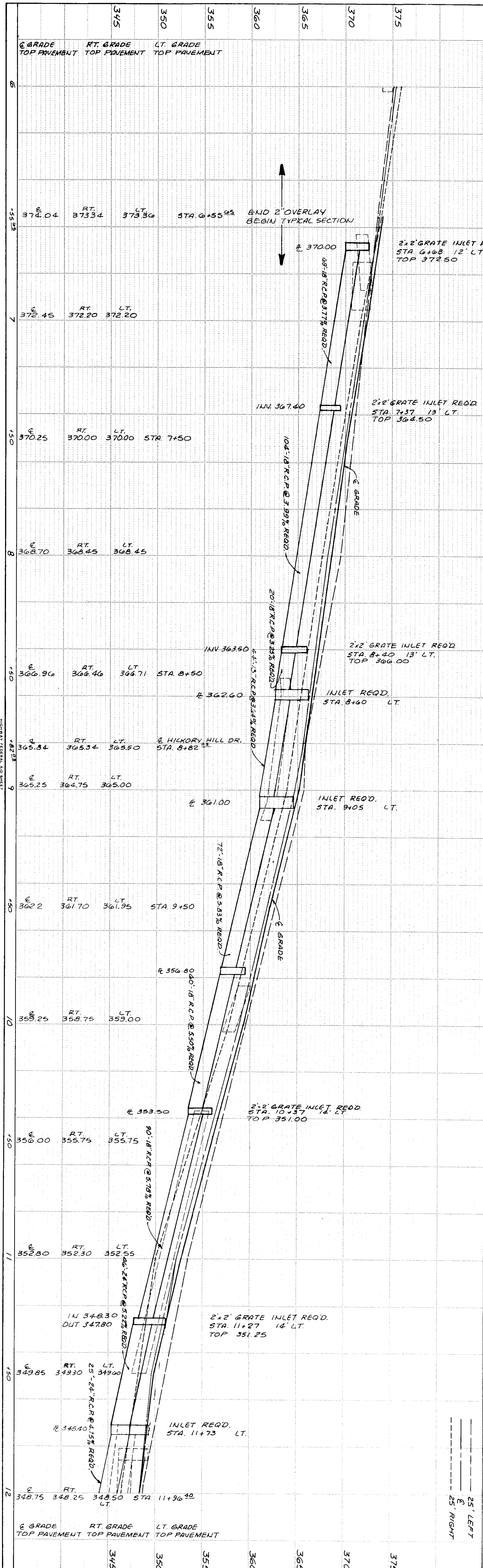
INDUSTRIAL DESIGN & CONSTRUCTION
 WAGONER ENGINEERING INC.
 Consulting Engineers - Jackson / Brandon, MS.

SCALE: 1" = 20' HOR.
 1" = 5' VERT.



PROFILE		BY	DATE
SURVEYED			
PLOTTED			
GRADES CHECKED			
BY M.S. NOTED			
STRUCTURE NOTATIONS CHECKED			

PLAN		BY	DATE
SURVEYED			
PLOTTED			
ALIGNMENT CHECKED			
RT OF WAY CHECKED			

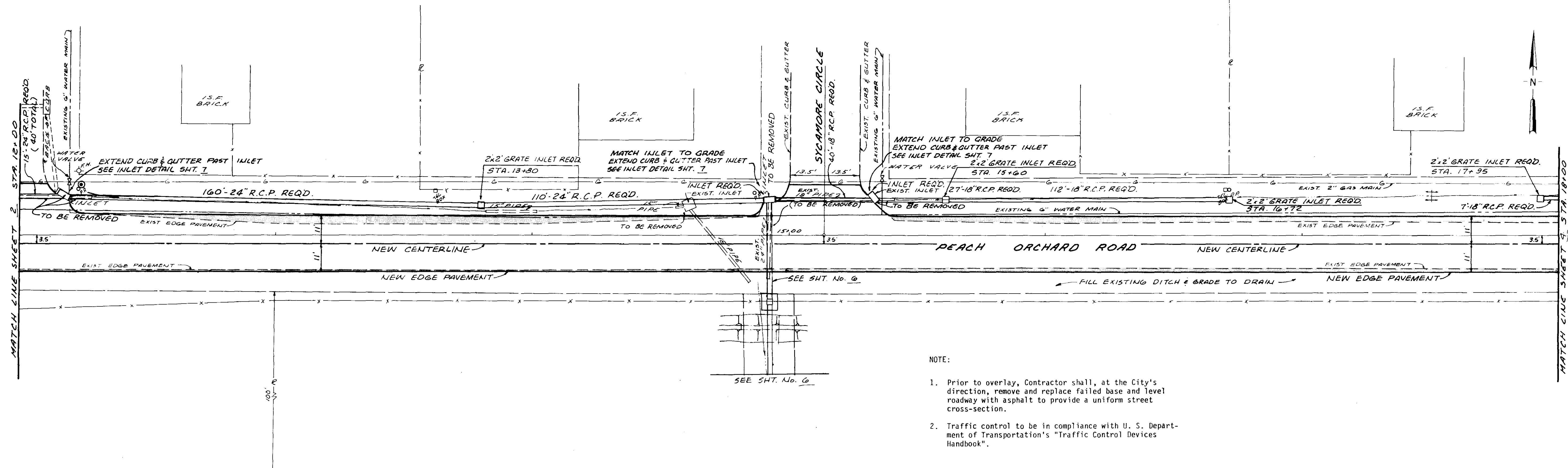


- NOTE:
1. Prior to overlay, Contractor shall, at the City's direction, remove and replace failed base and level roadway with asphalt to provide a uniform street cross-section.
 2. Traffic control to be in compliance with U. S. Department of Transportation's Traffic Control Devices Handbook.

WAGGONER ENGINEERING INC.
 Consulting Engineers - Jackson / Brandon, Ms.
 PLATE SINGLE PLAN AND PROFILE FULL DOT
 PRINTED IN U.S.A.
 2

DATE	
BY	
SURVEYED	
ALIGNED	
CHECKED	
RT OF WAY CHECKED	
NOTE BOOK	
NO.	

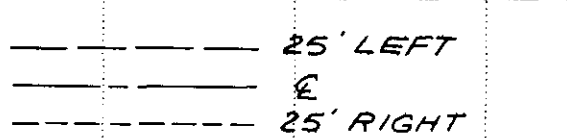
DATE	
BY	
SURVEYED	
GRADES CHECKED	
NOTE BOOK	
STRUCTURE NOTATIONS CHD.	



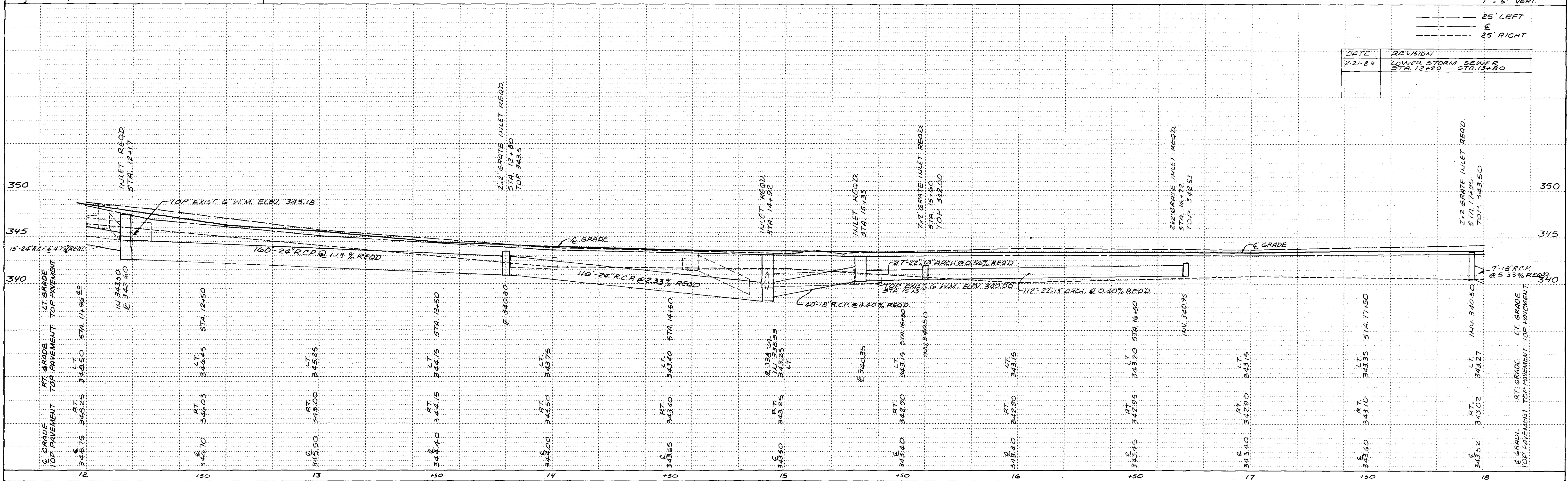
- NOTE:
1. Prior to overlay, Contractor shall, at the City's direction, remove and replace failed base and level roadway with asphalt to provide a uniform street cross-section.
 2. Traffic control to be in compliance with U. S. Department of Transportation's "Traffic Control Devices Handbook".

⊙ BENCHMARK ELEV. 348.66
NAIL IN SIDE PIP N.E. CORNER PEACH ORCHARD ROAD & WALNUT RIDGE

SCALE: 1" = 20' HOR.
1" = 5' VERT.



DATE	REVISION
2-21-89	LOWER STORM SEWER STA. 12+20 - STA. 13+80

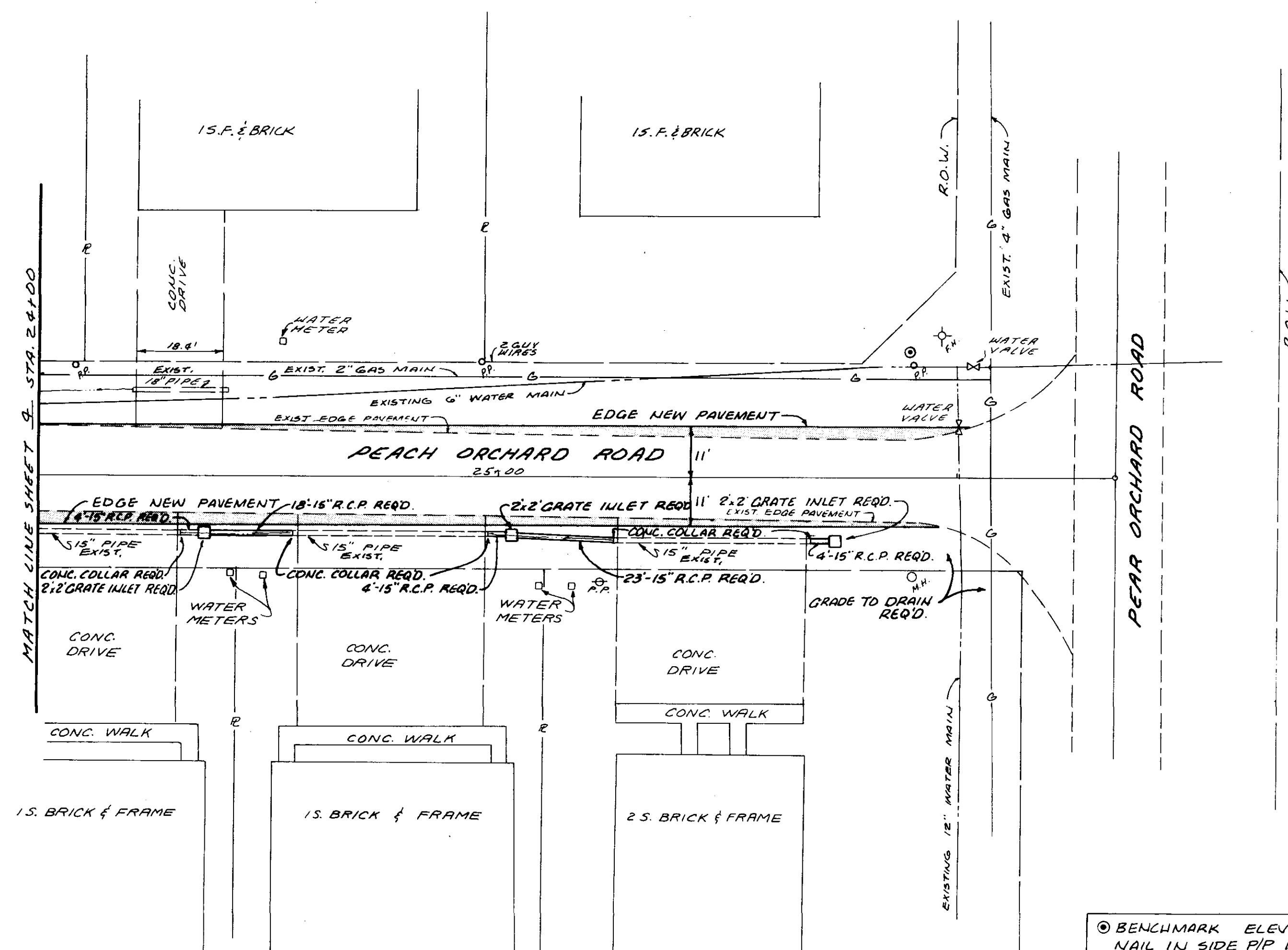


HIGHWAY FEDERAL AID SHEET
PLATE 1-SINGLE PLAN AND PROFILE-FULL DOT
MELBORNE
PRINTED IN U.S.A.

WAGGONER ENGINEERING INC.
Consulting Engineers - Jackson / Brandon, Ms.

PLAN	SURVEYED	DATE
	PLOTTED	BY
	ALIGNMENT CHECKED	
	AT 50' INTERVALS	
	NOTE BOOK NO.	

PROFILE	SURVEYED	DATE
	GRADES CHECKED	BY
	B. M. NOTED	
	STRUCTURE NOTINGS CHECKED	
	NOTE BOOK NO.	



- NOTE:
1. Prior to overlay, Contractor shall, at the City's direction, remove and replace failed base and level roadway with asphalt to provide a uniform street cross-section.
 2. Traffic control to be in compliance with U. S. Department of Transportation's "Traffic Control Devices Handbook".

◎ BENCHMARK ELEV 358.05
 NAIL IN SIDE PIP IN N.W. CORNER OF PEACH ORCHARD &
 PEAR ORCHARD 24th LT. STA. 25+90

SCALE: 1" = 20' HOR.
 1" = 5' VERT.

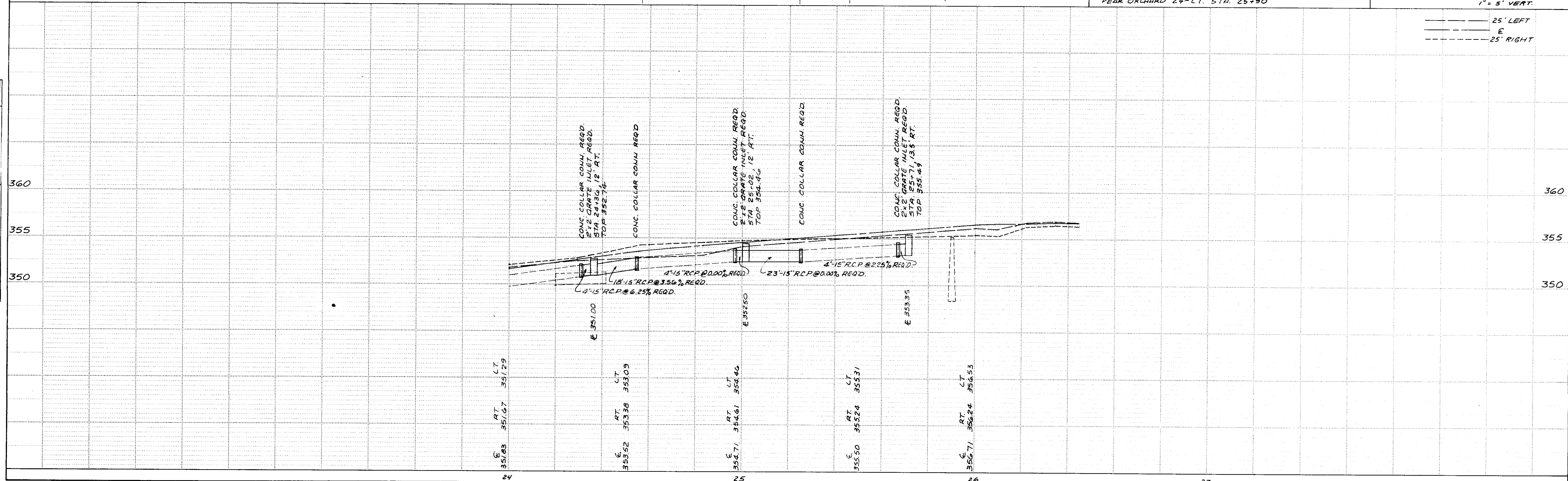
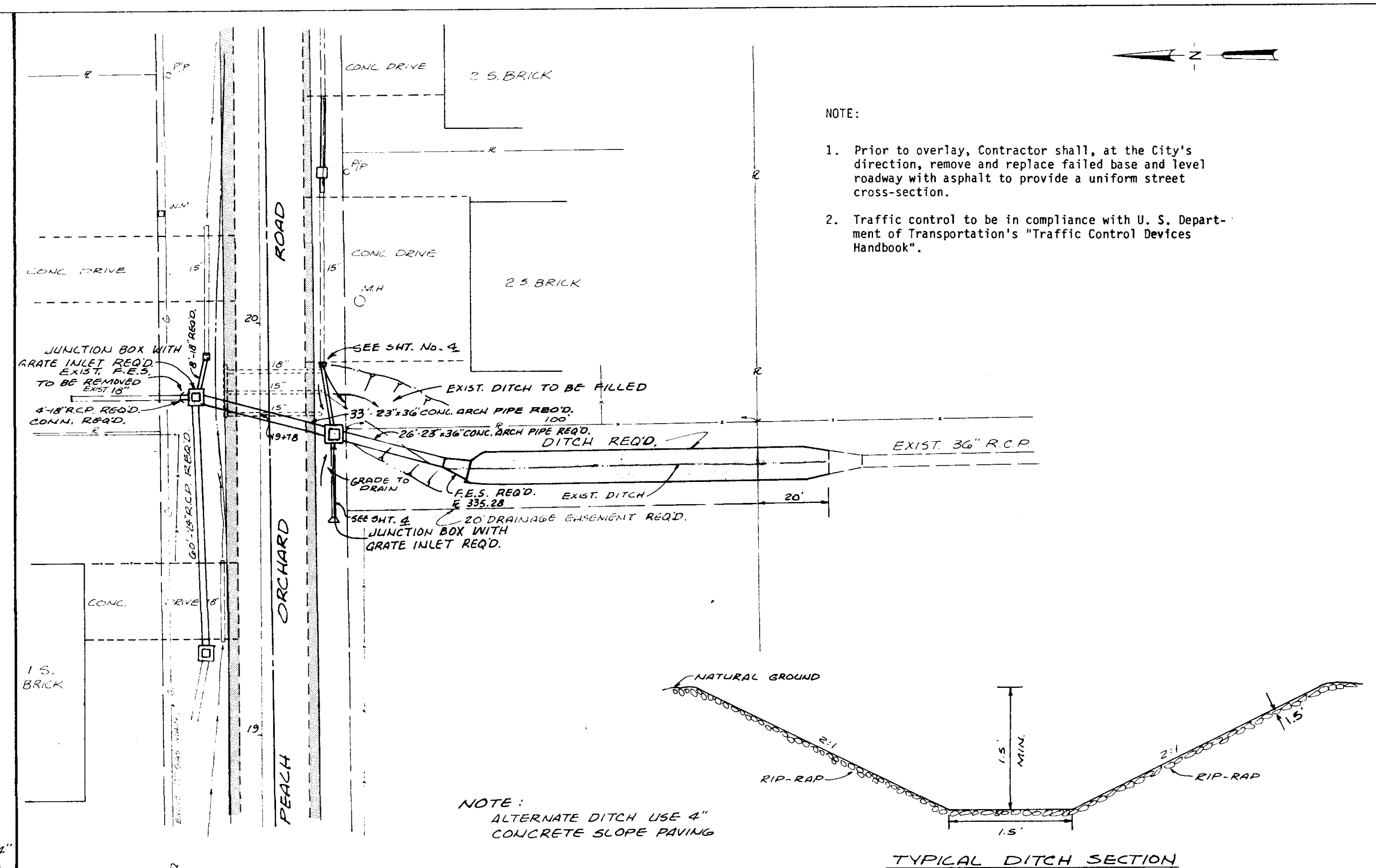
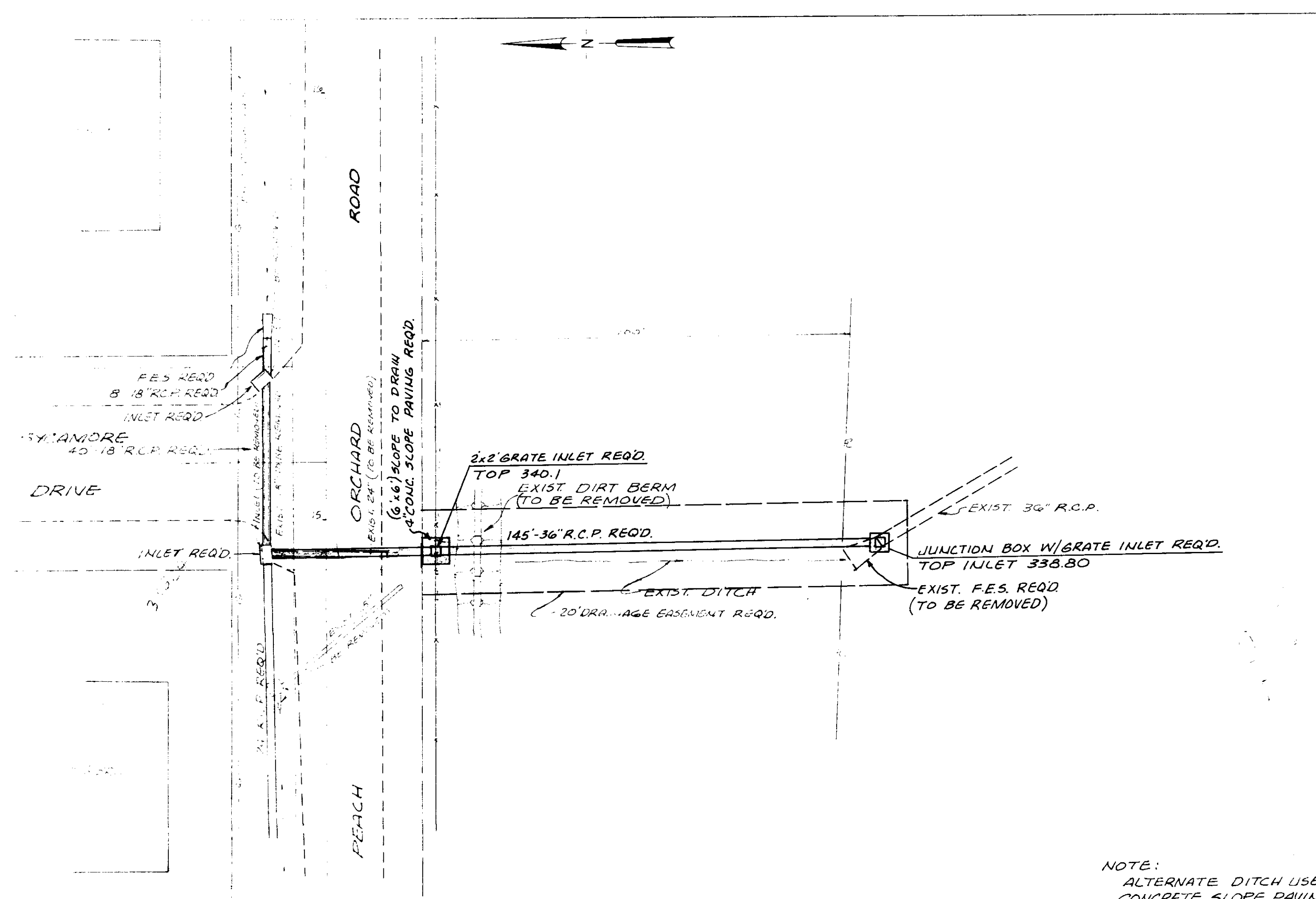
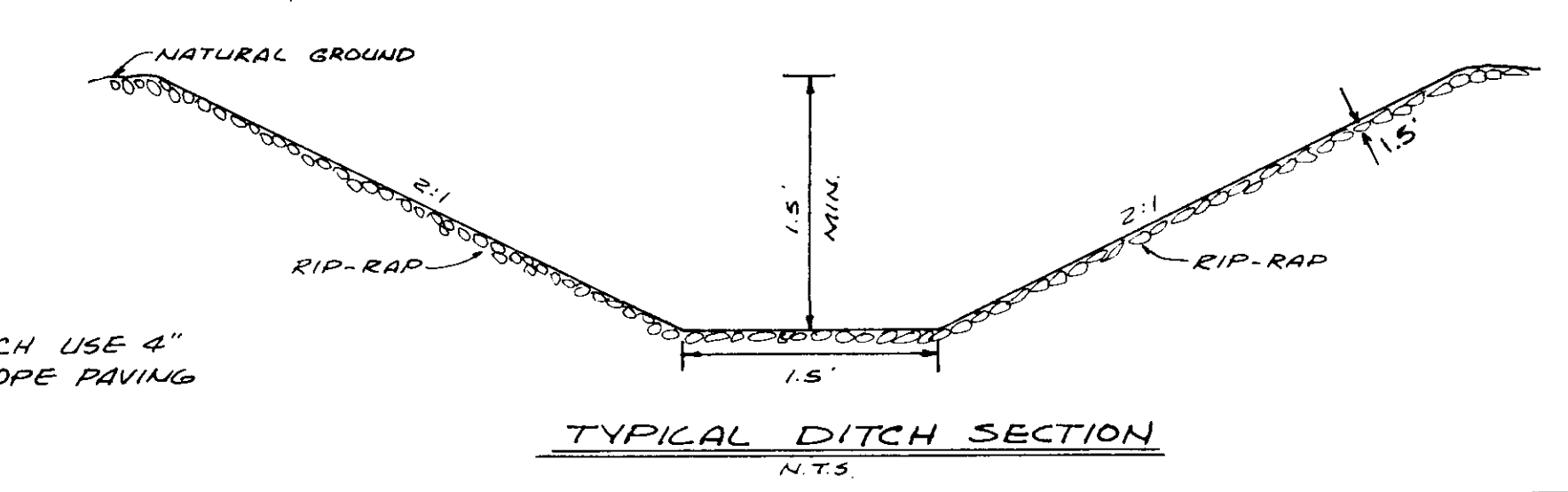


PLATE 1-SINGLE PLAN AND PROFILE-FULL DOT
 PRINTED IN U.S.A.



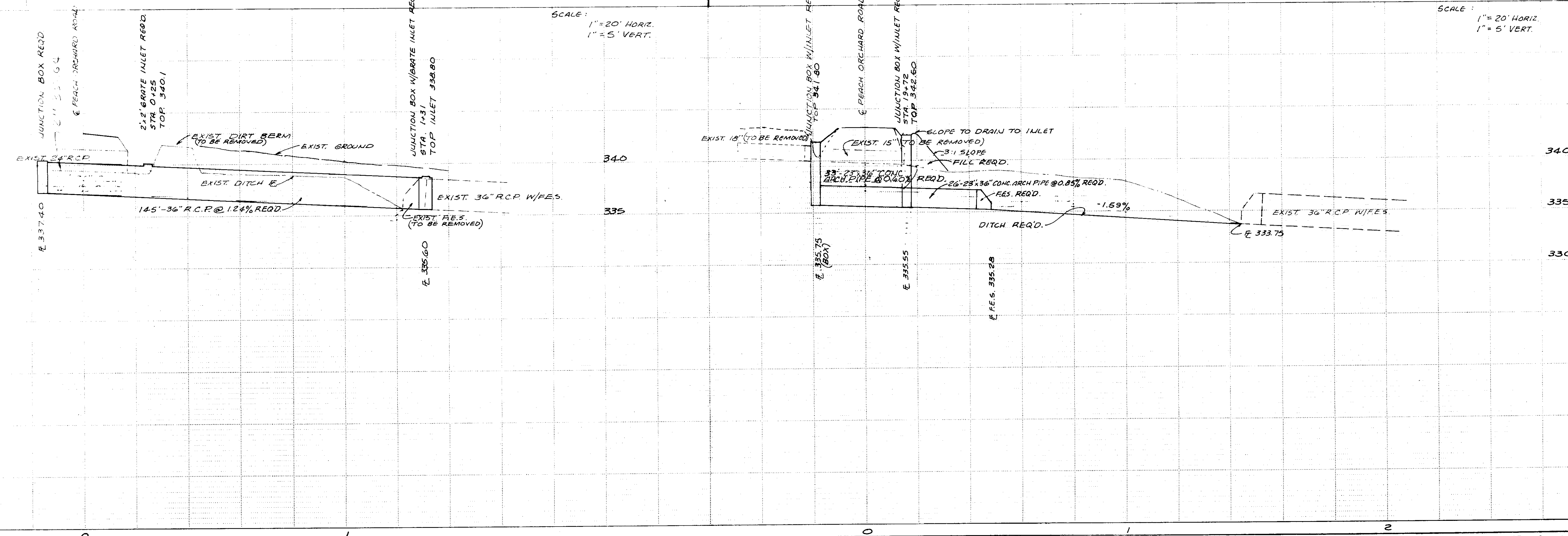
- NOTE:
1. Prior to overlay, Contractor shall, at the City's direction, remove and replace failed base and level roadway with asphalt to provide a uniform street cross-section.
 2. Traffic control to be in compliance with U. S. Department of Transportation's "Traffic Control Devices Handbook".

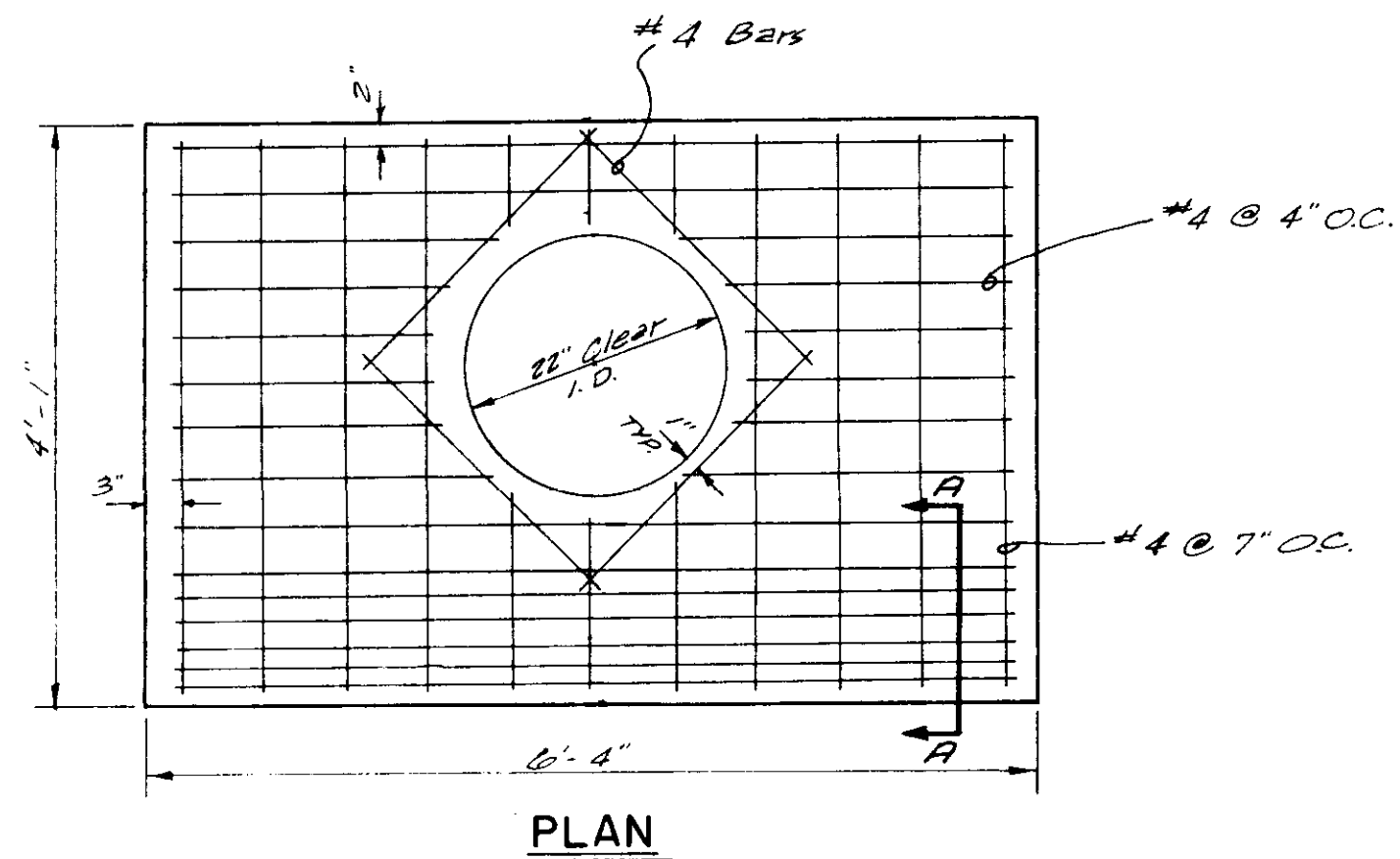


NOTE:
ALTERNATE DITCH USE 4"
CONCRETE SLOPE PAVING

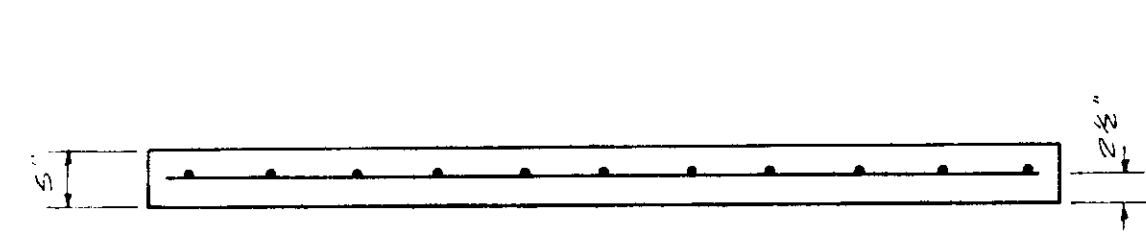
SCALE:
1" = 20' HORIZ.
1" = 5' VERT.

SCALE:
1" = 20' HORIZ.
1" = 5' VERT.

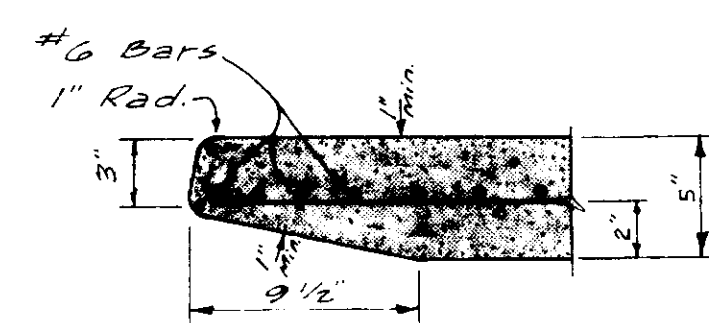




PLAN

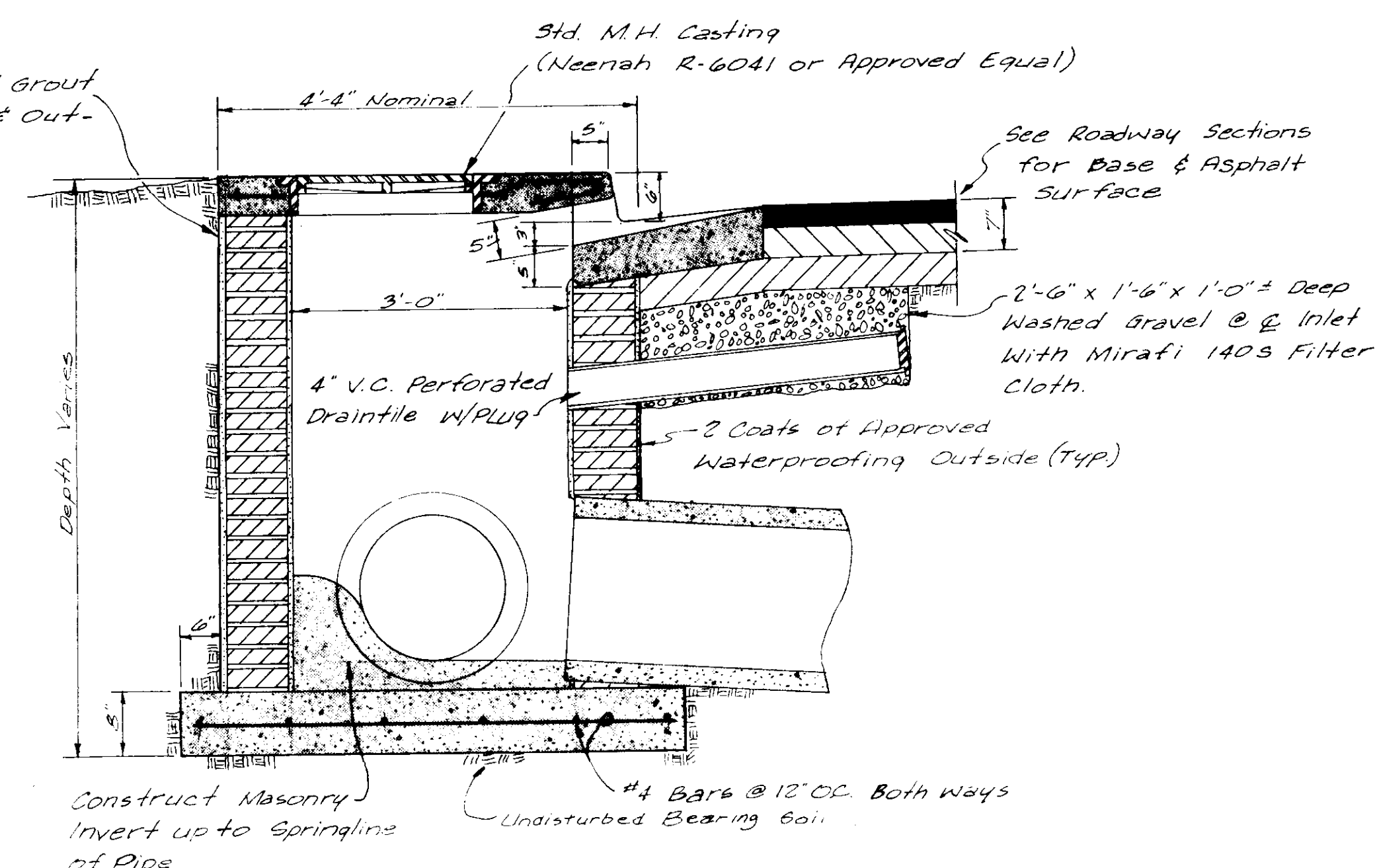


ELEVATION
INLET TOP



SECTION A-A

8" Masonry w/ 1/2" Grout
1:2 Mix Inside & Out -
Max. 3/4" joints



TYPE "A" INLET

NOTE:
FOR PIPES 15"-21"

Construct Masonry
Invert up to Springline
of Pipe

2'-6" x 1'-6" x 1'-0" Deep
Washed Gravel @ Inlet
With Mirafi 140s Filter
Cloth.

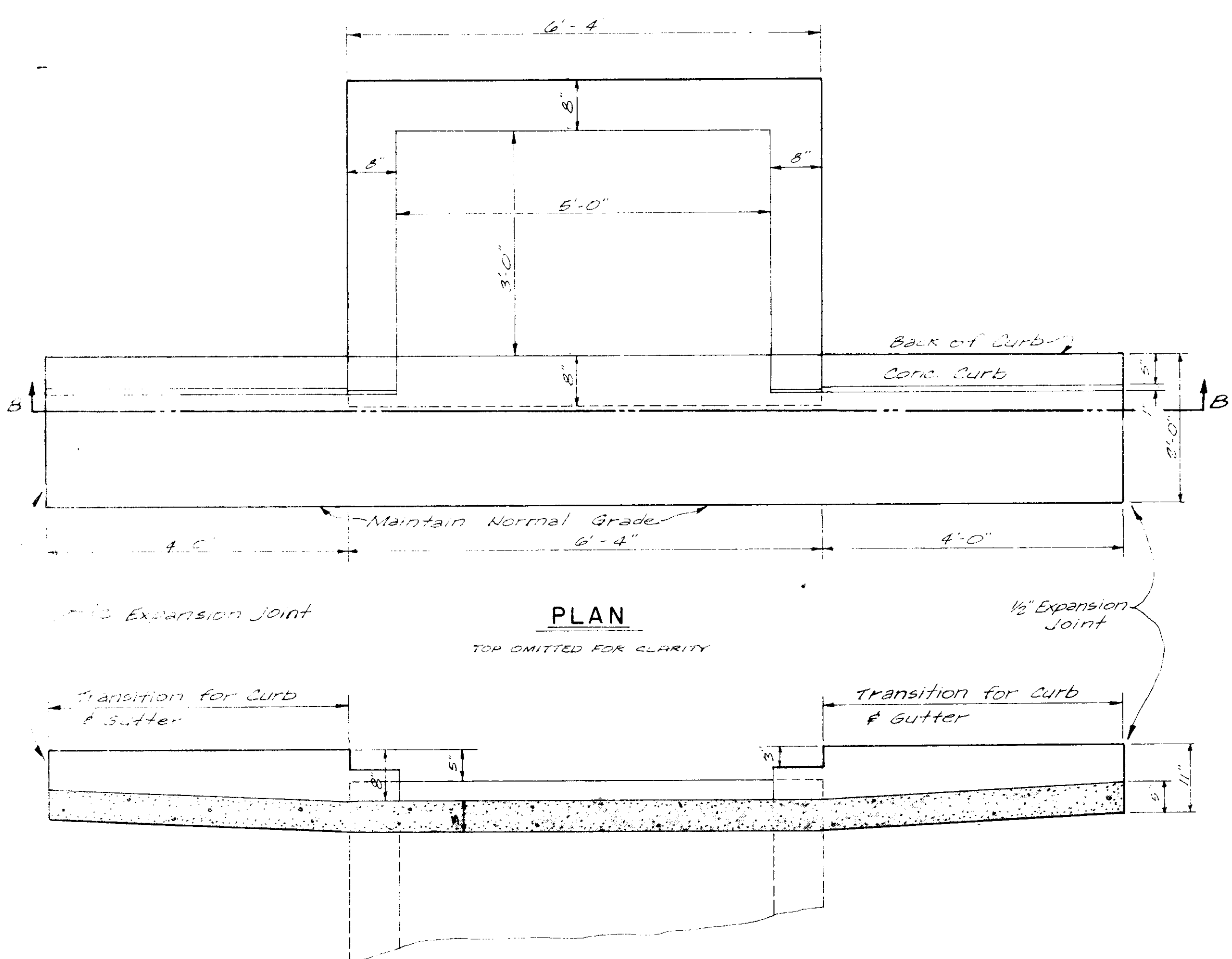
5-8 Coats of Approved
Waterproofing Outside (Typ)

See Roadway Sections
for Base & Asphalt
Surface

Std. M.H. Casting
(Neenah R-6041 or Approved Equal)

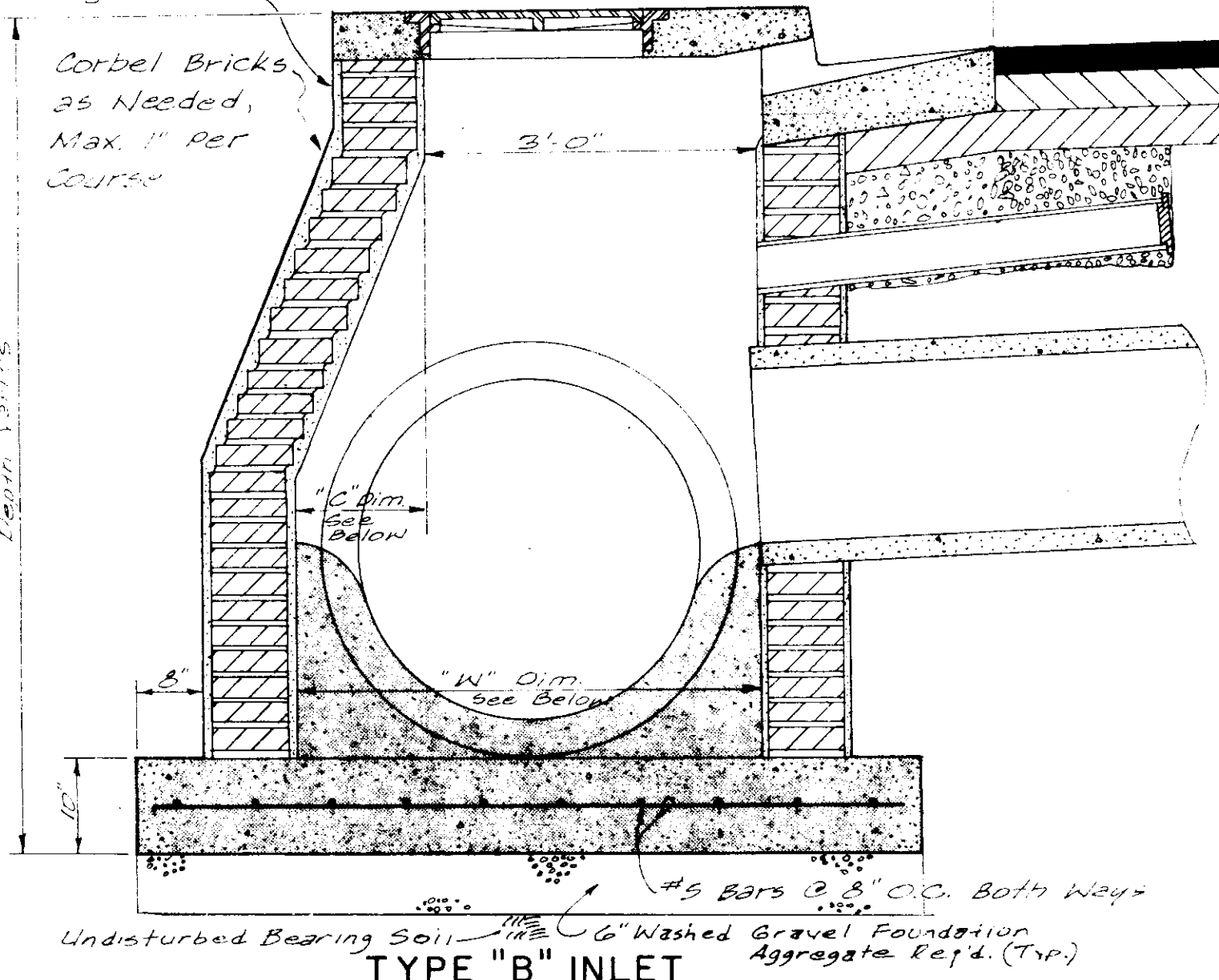
Undisturbed Bearing Soil

#4 Bars @ 12" O.C. Both Ways



SECTION B-B
CURB INLET

8" Masonry w/ 3/4" Grout
1:2 Mix Inside & Out -
Max. 3/4" joints



TYPE "B" INLET

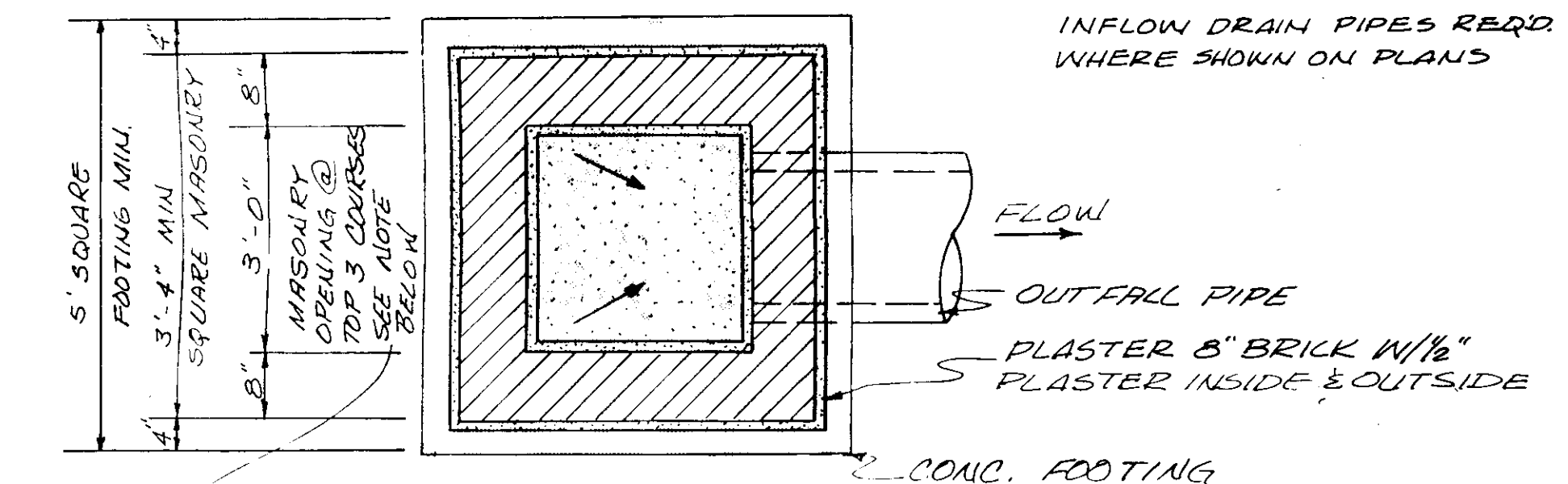
Undisturbed Bearing Soil

Corbel Bricks
as Needed,
Max. 1" per
Course

Depth Varies

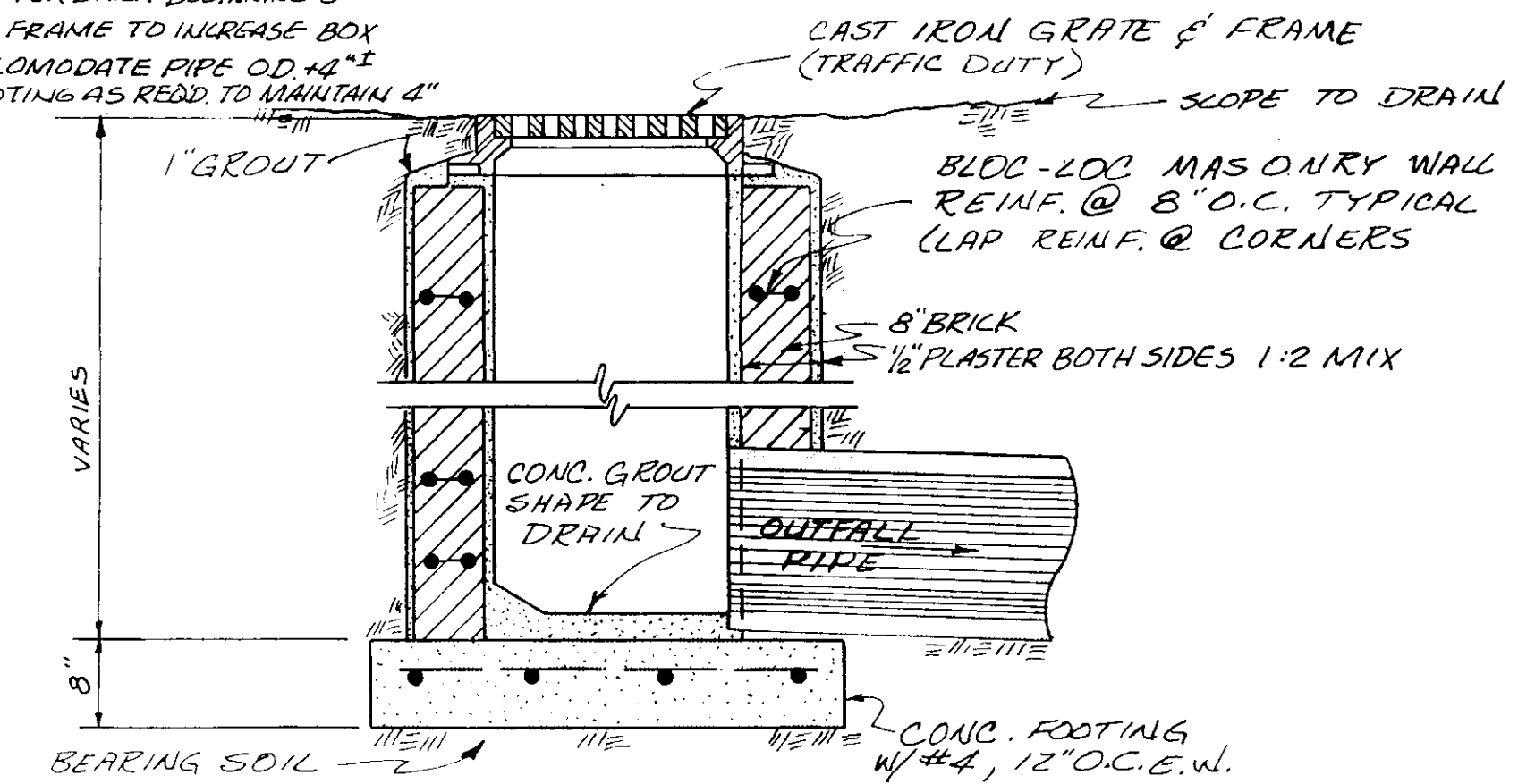
6" Washed Gravel Foundation
Aggregate Ref. 4. (Typ.)

Dimensions for Type "B" Inlet					
Pipe I.D.	Pipe O.D.	Dim. "W"	Dim. "C"	Max. Courses	Corbelled
24"	30"	37"	4"	4	
27"	36"	40"	4"	4	
30"	39 1/2"	44"	5"	5	
36"	45 1/2"	50"	14"	14	



PLAN SECTION

NOTE: WHERE 3/4" DIA PIPE OCCURS, CORBEL
BRICK BACK 1" PER BRICK BEGINNING 8"
BELOW GRATE FRAME TO INCREASE BOX
SIZE TO ACCOMMODATE PIPE OD + 1/4"
INCREASE FOOTING AS REQD TO MAINTAIN 4"



GRATE INLET
M.T.S.

CITY OF RIDGELAND		
PEACH ORCHARD ROAD		
WAGGONER ENGINEERING INC. Consulting Engineers - Jackson / Brandon, MS		
DRAWN BY: M.A.L.	DATE: 10-21-88	SHEET NO. 7
CHECKED BY: C.H.N.	SCALE: 1" = 1'-0"	
APPROVED BY: J.A.W.		