

CONTRACT XI
WATER SYSTEM EXTENSION
AND RELATED FACILITIES
TO SERVE PEAR ORCHARD SQUARE
SUPPLEMENTAL AGREEMENT ONE
PARTS A & B

TOWN OF RIDGELAND
RIDGELAND SERVICE AREA SOUTH
MADISON COUNTY, MISSISSIPPI



VICINITY MAP
SCALE 1"=2000'

MAYOR AND BOARD OF ALDERMEN

D. F. (JACK) McGERMACK, MAYOR

HAROLD E. ADCOCK, ALDERMAN

EUGENE HAWKINS, ALDERMAN

BARBARA J. JOHNSON, ALDERMAN

THERMAN L. HOWARD, ALDERMAN

DONALD E. LINDSLY, ALDERMAN

MARCELLA CANNON, TOWN CLERK

CASE & MONTGOMERY, ATTORNEYS

HARVEY CARR

MAINTENANCE SUPERINTENDENT



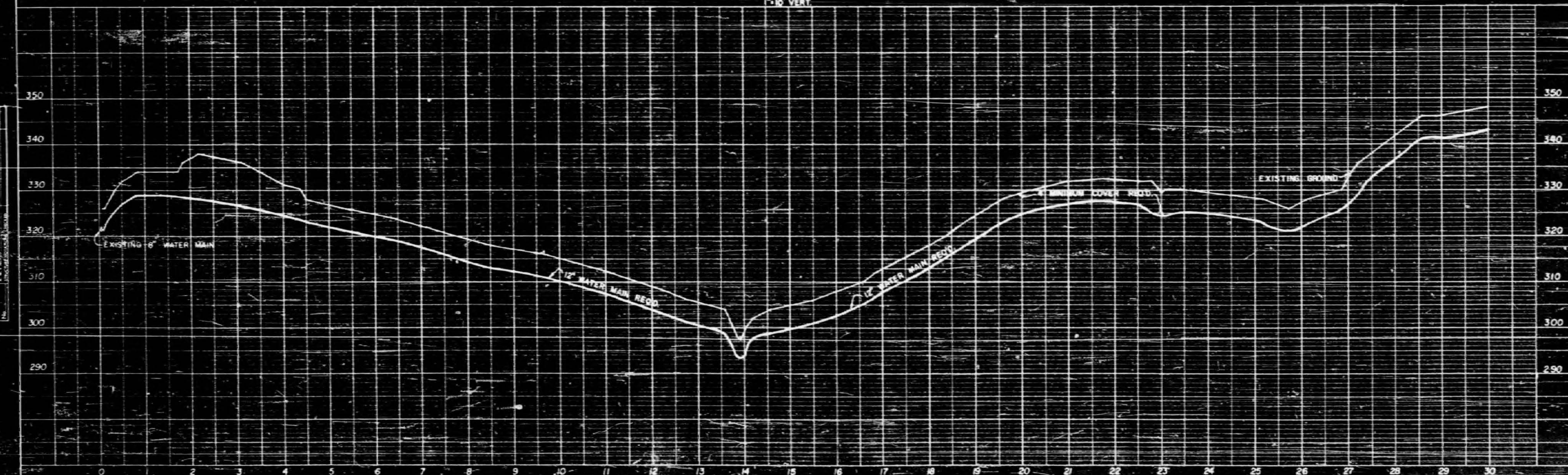
LESTER ENGINEERING CO.
JACKSON, MISS.

2407



NOTES
 FOR WATER DISTRIBUTION SYSTEM CONSTRUCTION
 DETAILS, SEE SHEET NO. 3
 WHEN A SUBSTANTIAL SERVICE MAIN OR SERVICE LINE
 IS LOCATED NEARBY, THE SERVICE LINE SHALL BE
 LOCATED BOTH THE SOUTH AND NORTH SIDES OF
 THE MAIN. THE MINIMUM CLEARANCE FROM THE MAIN
 OR SERVICE LINE SHALL BE OF CAST IRON PIPE

PLAN: 12" WATER MAIN
 SCALE: 1"=100' HORIZ.
 1"=10' VERT.



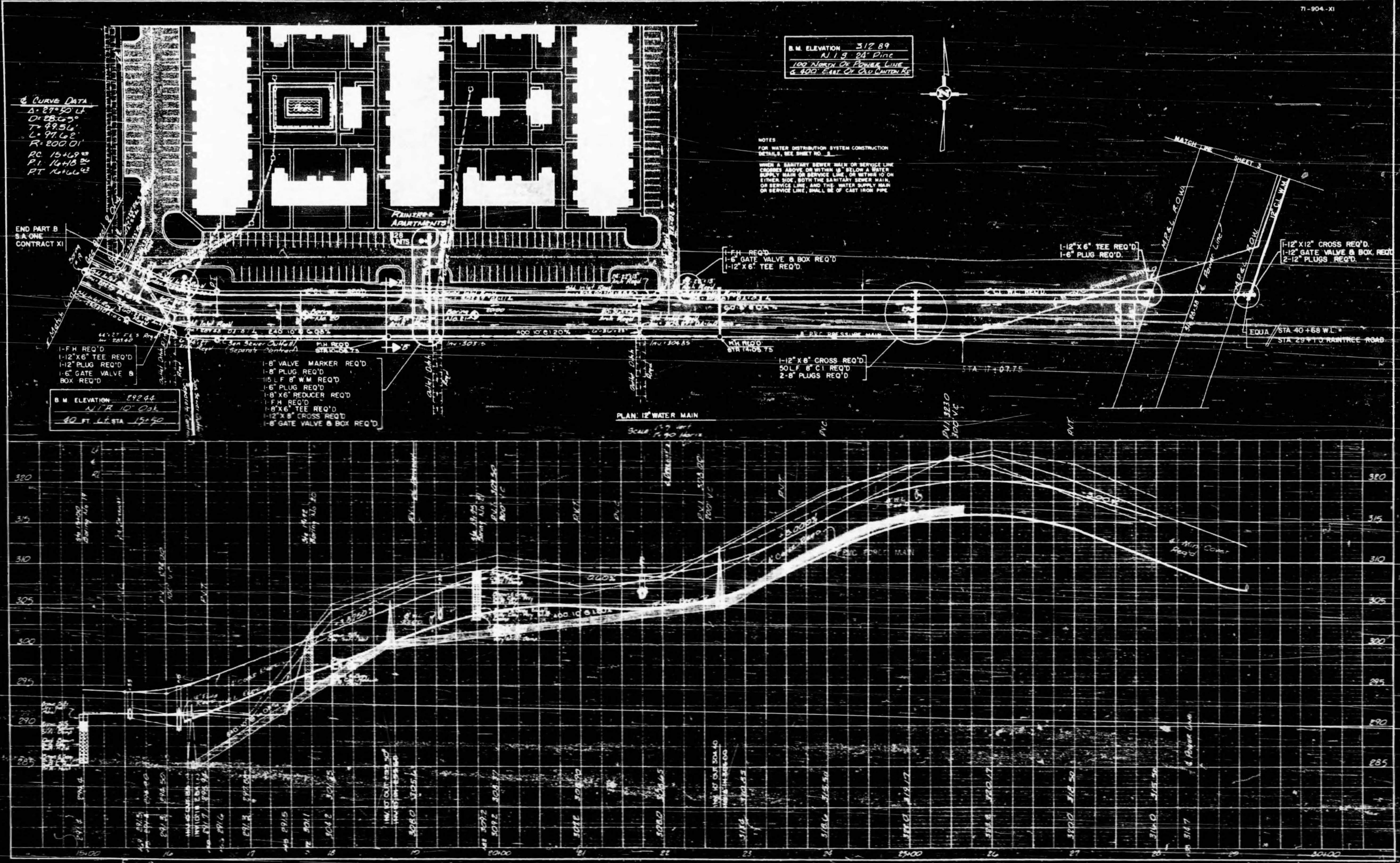
PROFILES: PLAN/PROFILE
 SCALE: 1"=100' HORIZ.
 1"=10' VERT.

PLAN

DATE	
BY	
CHECKED BY	
APPROVED BY	
SCALE	
PROJECT NO.	
SHEET NO.	

PROFILE

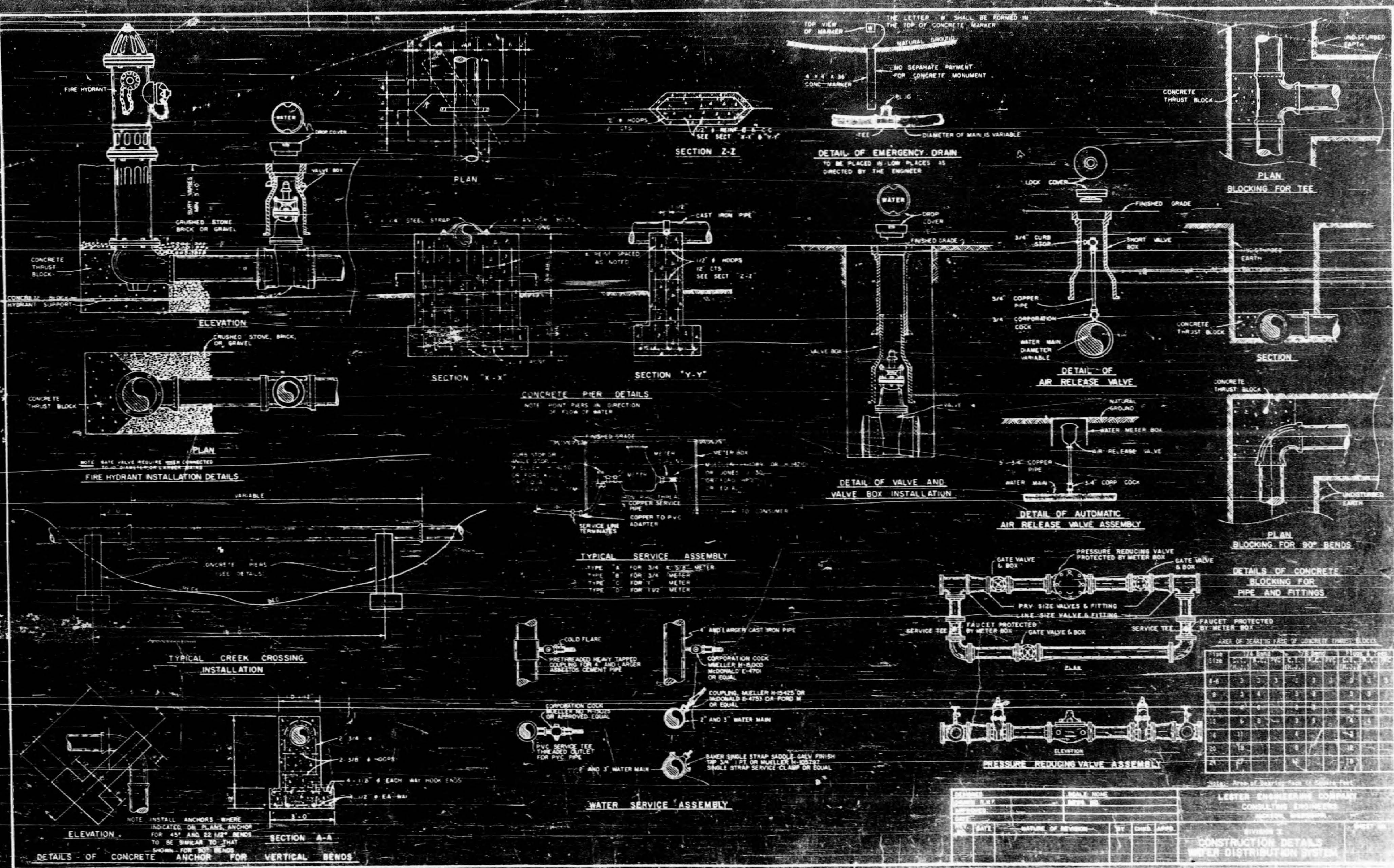
DATE	
BY	
CHECKED BY	
APPROVED BY	
SCALE	
PROJECT NO.	
SHEET NO.	



CURVE DATA
 A=147.50'
 D=28.20'
 T=49.50'
 L=77.00'
 R=800.01'
 PC=124.00'
 PT=141.62'

NO.	DATE	REVISION
1		ISSUED
2		REVISED
3		REVISED
4		REVISED
5		REVISED
6		REVISED
7		REVISED
8		REVISED
9		REVISED
10		REVISED
11		REVISED
12		REVISED
13		REVISED
14		REVISED
15		REVISED
16		REVISED
17		REVISED
18		REVISED
19		REVISED
20		REVISED
21		REVISED
22		REVISED
23		REVISED
24		REVISED
25		REVISED
26		REVISED
27		REVISED
28		REVISED
29		REVISED
30		REVISED
31		REVISED
32		REVISED
33		REVISED
34		REVISED
35		REVISED
36		REVISED
37		REVISED
38		REVISED
39		REVISED
40		REVISED
41		REVISED
42		REVISED
43		REVISED
44		REVISED
45		REVISED
46		REVISED
47		REVISED
48		REVISED
49		REVISED
50		REVISED

B.M. ELEVATION 292.44
 N.T.R. 10' 0.00'
 40 FT. L.C. STA 12+50



NOTE: BAY VALVE REQUIRE WIDER SPACING THAN STANDARD VALVES

CONCRETE PIER DETAILS
NOTE: POINT PRESS IN DIRECTION OF FLOW OF WATER

TYPICAL SERVICE ASSEMBLY
TYPE "A" FOR 3/4" & 1" METER
TYPE "B" FOR 3/4" METER
TYPE "C" FOR 1" METER
TYPE "D" FOR 1 1/2" METER

DETAILS OF CONCRETE ANCHOR FOR VERTICAL BENDS
NOTE: INSTALL ANCHORS WHERE INDICATED ON PLANS, ANCHOR FOR 45° AND 90° BENDS TO BE SIMILAR TO THAT SHOWN FOR 90° BENDS

TYPE	VALVE SIZE	VALVE BOX	VALVE BOX	VALVE BOX	VALVE BOX	VALVE BOX	VALVE BOX	VALVE BOX	VALVE BOX
1/2"	1/2"	1/2"	1/2"	1/2"	1/2"	1/2"	1/2"	1/2"	1/2"
3/4"	3/4"	3/4"	3/4"	3/4"	3/4"	3/4"	3/4"	3/4"	3/4"
1"	1"	1"	1"	1"	1"	1"	1"	1"	1"
1 1/2"	1 1/2"	1 1/2"	1 1/2"	1 1/2"	1 1/2"	1 1/2"	1 1/2"	1 1/2"	1 1/2"
2"	2"	2"	2"	2"	2"	2"	2"	2"	2"
2 1/2"	2 1/2"	2 1/2"	2 1/2"	2 1/2"	2 1/2"	2 1/2"	2 1/2"	2 1/2"	2 1/2"
3"	3"	3"	3"	3"	3"	3"	3"	3"	3"
4"	4"	4"	4"	4"	4"	4"	4"	4"	4"
6"	6"	6"	6"	6"	6"	6"	6"	6"	6"
8"	8"	8"	8"	8"	8"	8"	8"	8"	8"
10"	10"	10"	10"	10"	10"	10"	10"	10"	10"

NO.	DATE	NATURE OF REVISION	BY	CHKD.	APP'D.

LESSER ENGINEERING COMPANY
CONSULTING ENGINEERS
1000 W. 10TH ST.
MINNEAPOLIS, MINN.

CONSTRUCTION DETAILS
WATER DISTRIBUTION SYSTEM