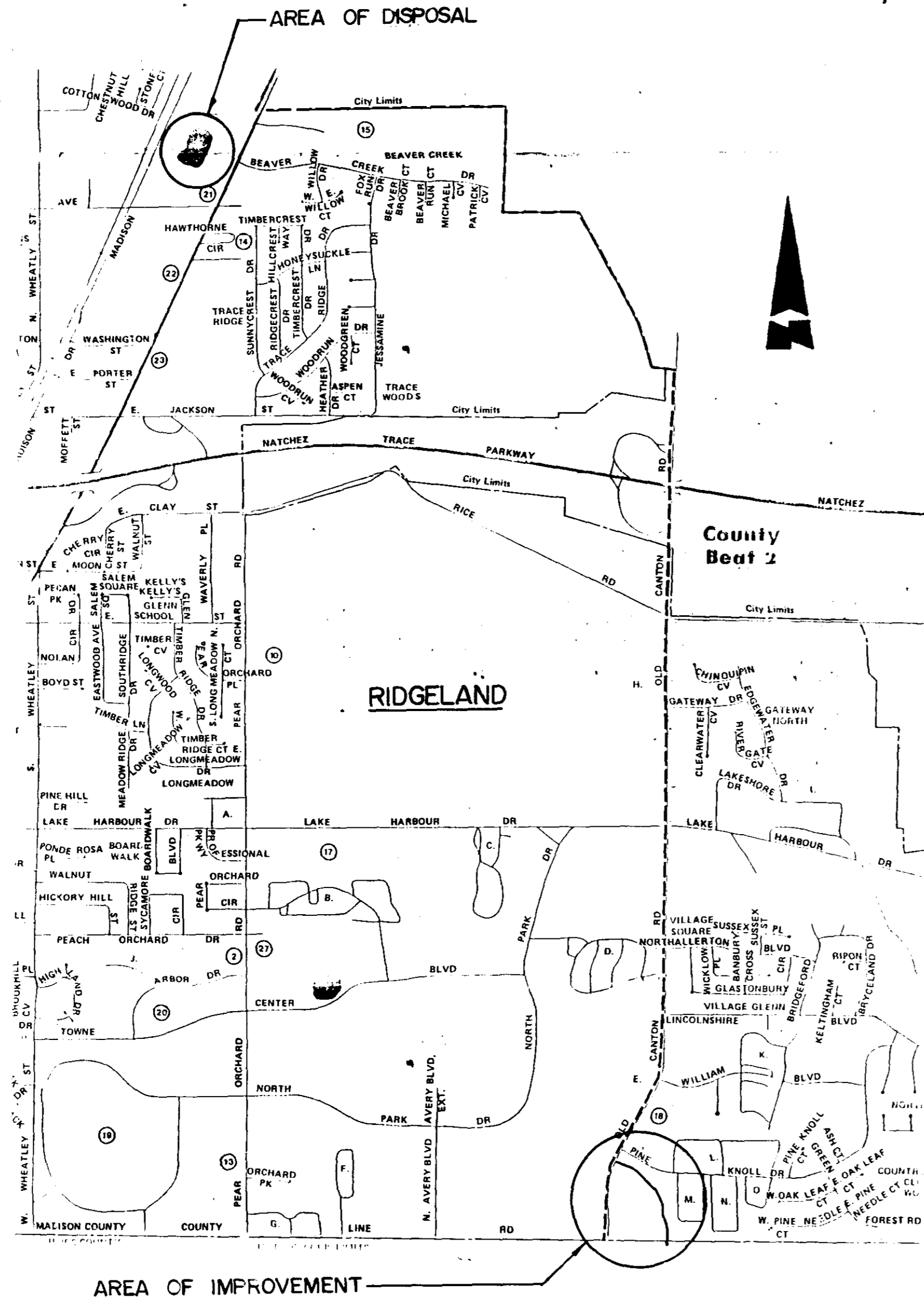


VICINITY MAP



AREA OF IMPROVEMENT

ITEM	QUANTITIES			
	Contract Estimate Amount	Unit	Final Pay	
			Amount	Unit Price \$ Dollars
CLEARING AND GRUBBING	1	*L.S.		
STRUCTURE REMOVAL	1	*L.S.		
VEGETATION	1.4	AC		
MOBILIZATION	1	*L.S.		
EXCAVATION	11,211	C.Y.		
EARTHFILL	3,358	C.Y.		
CONCRETE PIPE, 18" DIA.	12	L.F.		
CONCRETE PIPE, 24" DIA.	60	L.F.		
CONCRETE PIPE, 36" DIA.	24	L.F.		
ROCK RIPRAP	5,423	C.Y.		
GEOTEXTILE	9,486	S.Y.		
CONCRETE GROUT	63	C.Y.		
			TOTAL	

*L.S. - Lump Sum

Pine Knoll EMERGENCY WATERSHED PROTECTION

CITY OF RIDGELAND
MADISON COUNTY, MISSISSIPPI
U.S. DEPARTMENT OF AGRICULTURE
SOIL CONSERVATION SERVICE

PWP 00500

INDEX OF DRAWINGS	
SHEET NO.	DESCRIPTION
1	LOCATION MAP
2-5	PLAN AND PROFILE
6	TYPICAL SECTION AND DETAILS

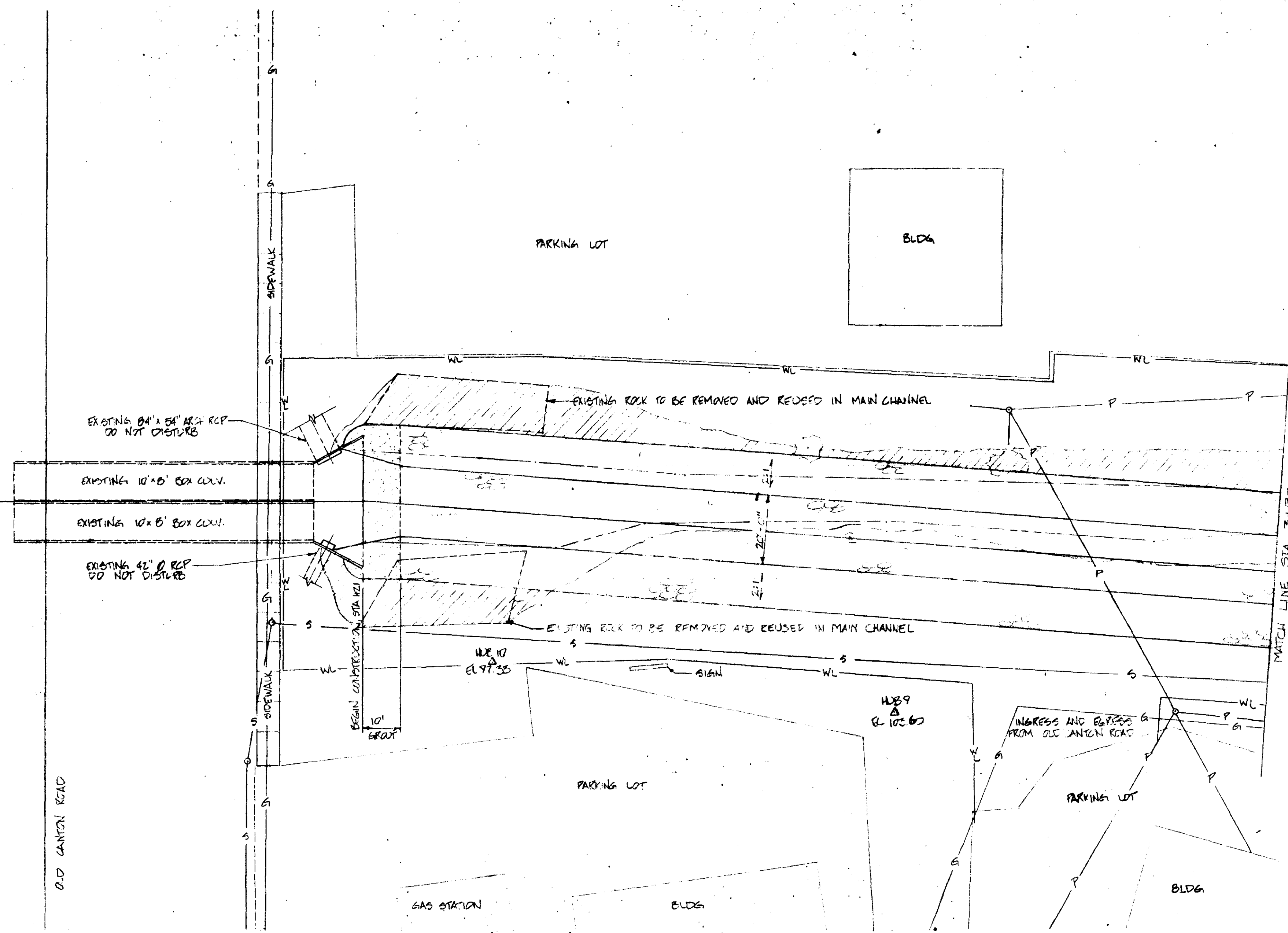
(PUBLIC WORKS DIRECTOR) _____ DATE _____

(CITY ENGINEER) _____ DATE _____

LOCATION MAP

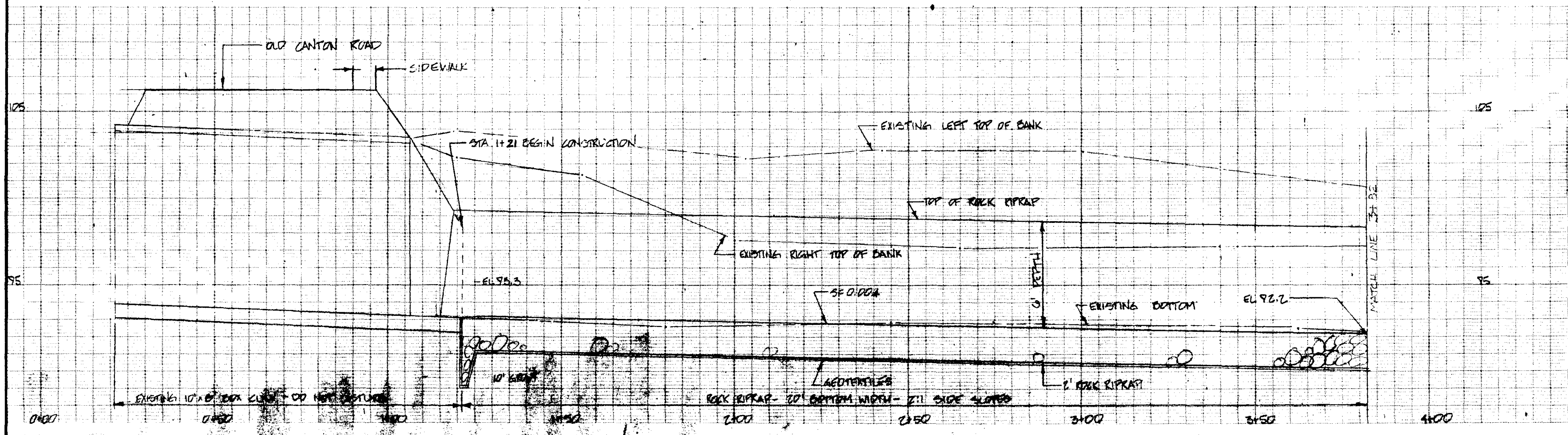
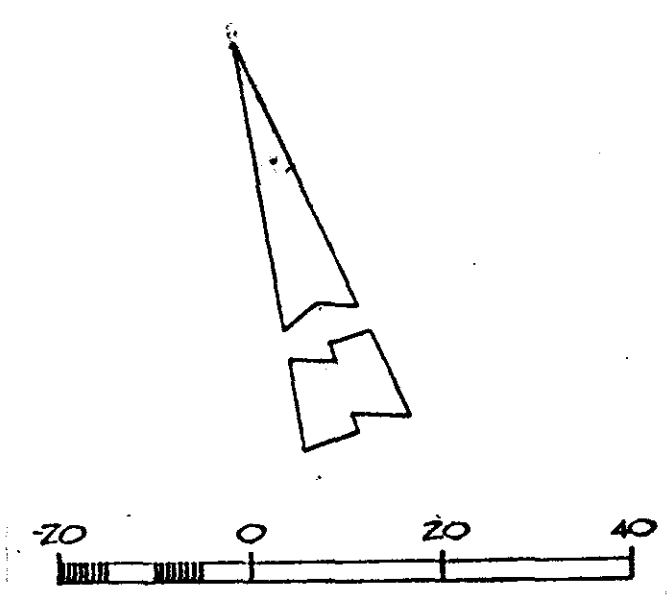
U.S. DEPARTMENT OF AGRICULTURE
SOIL CONSERVATION SERVICE

Designed R. R. CHILDRESS	Date 3-89	Approved by Richard H. Hester
Drawn N.E. McCALIP	3-89	Title State Conservation Engineer
Checked KANDY CHILDRRESS	4-89	SCS, Jackson, MS 39211
Sheet No. 1	Drawing No.	
of 6		



LEGEND

- △ TRANSIT STATION
- PLOTTED POINT
- SEWER LINE W/ MANHOLE
- T— TELEPHONE LINE W/ JUNCTION BOX & POLE
- P— POWER LINE W/ POLE
- W— WATER LINE W/ METER
- G— GAS LINE W/ METER
- X— EXISTING FENCE LINE
- — — EXISTING T&E
- — — EXISTING TOP OF BANK
- — — APPROX. LIMIT OF CUT
- — — APPROX. LIMIT OF WORK
- /// EARTH FILL
- CONCRETE GROUT
- BROMIUM CONTROL BLANKET



REVISION BLOCK					
#	INITIALS	DATE	#	INITIALS	DATE
1	RSC	4-88			

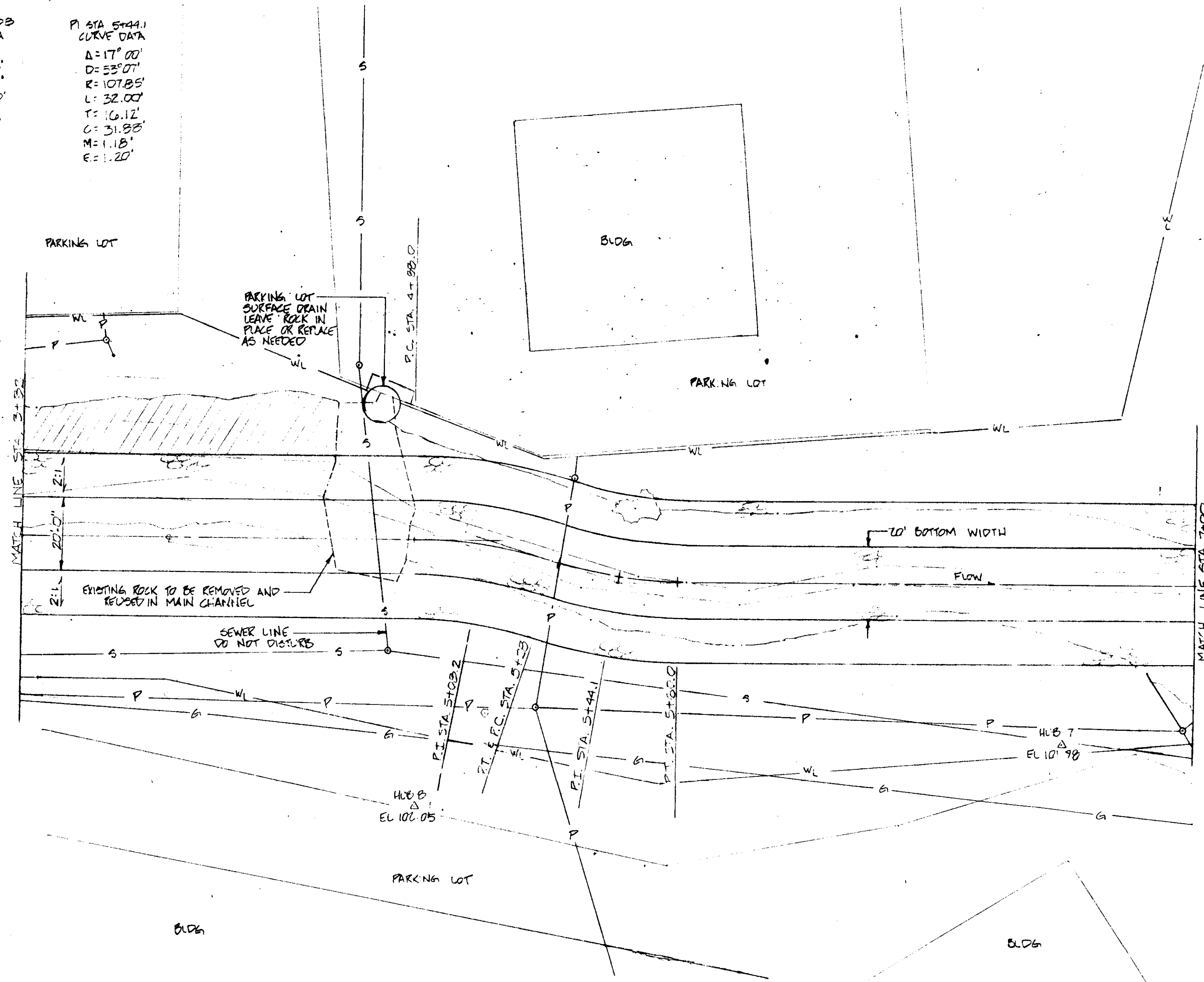
PINE KNOLL
CITY OF RIDGELAND
MADISON COUNTY, MISSISSIPPI
EMERGENCY WATERSHED PROTECTION
PLAN AND PROFILE

**U. S. DEPARTMENT OF AGRICULTURE
SOIL CONSERVATION SERVICE**

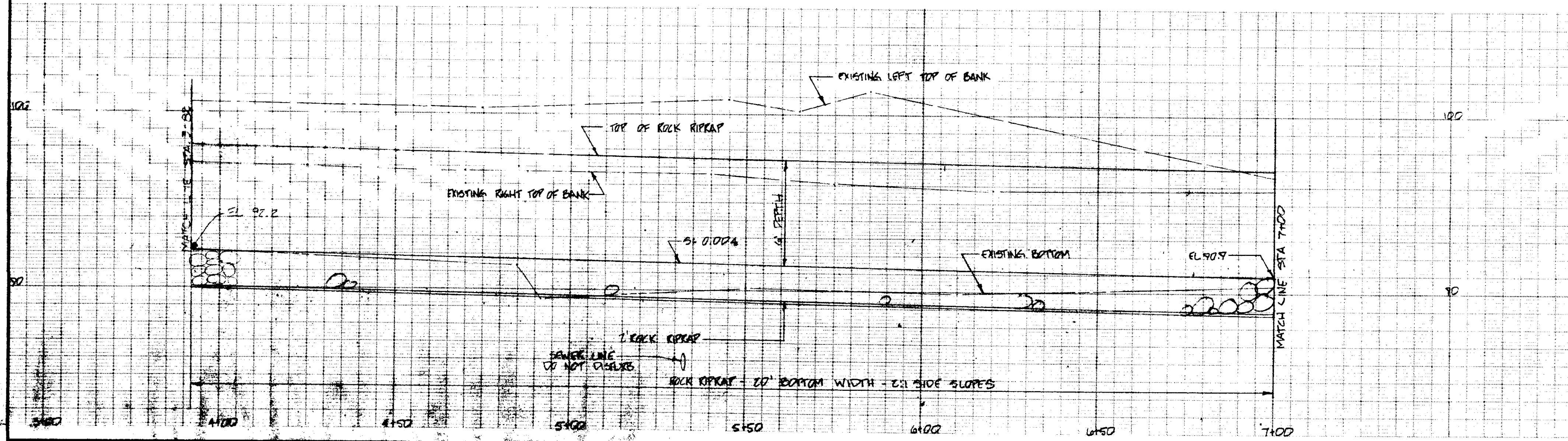
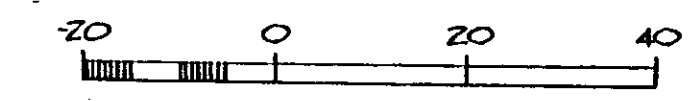
Designed: RW RSC	Date: 3-88	Approved by:
Drawn: HEM	Date: 3-88	Title:
Traced:		Title:
Checked: RSC	Date: 4-87	Sheet No. 2 of 6

P1 STA 5+08
 CURVE DATA
 Δ = 17° 30'
 D = 43° 45'
 R = 130.76'
 L = 40.00'
 T = 20.16'
 C = 39.84'
 M = 1.52'
 E = 1.54'

P1 STA 5+44.1
 CURVE DATA
 Δ = 17° 00'
 D = 53° 07'
 R = 107.85'
 L = 32.00'
 T = 16.12'
 C = 31.88'
 M = 1.18'
 E = 1.20'



- LEGEND**
- △ TRANSIT STATION
 - PLOTTED POINT
 - SEWER LINE W/ MANHOLE
 - TELEPHONE LINE W/ JUNCTION BOX & POLE
 - POWER LINE W/ POLE
 - WATER LINE W/ METER
 - GAS LINE W/ METER
 - *—*— EXISTING FENCE LINE
 - — — EXISTING TOE
 - — — EXISTING TOP OF BANK
 - — — APPROX. LIMIT OF CUT
 - — — APPROX. LIMIT OF WORK
 - /// EARTH FILL
 - CONCRETE GROUT
 - — — EROSION CONTROL BLANKET

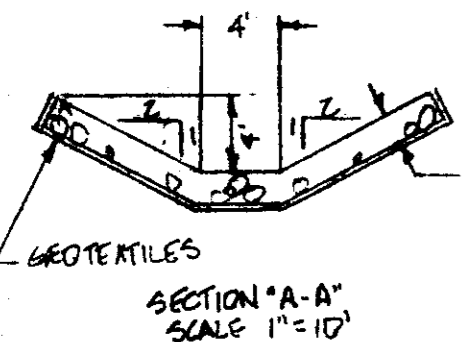
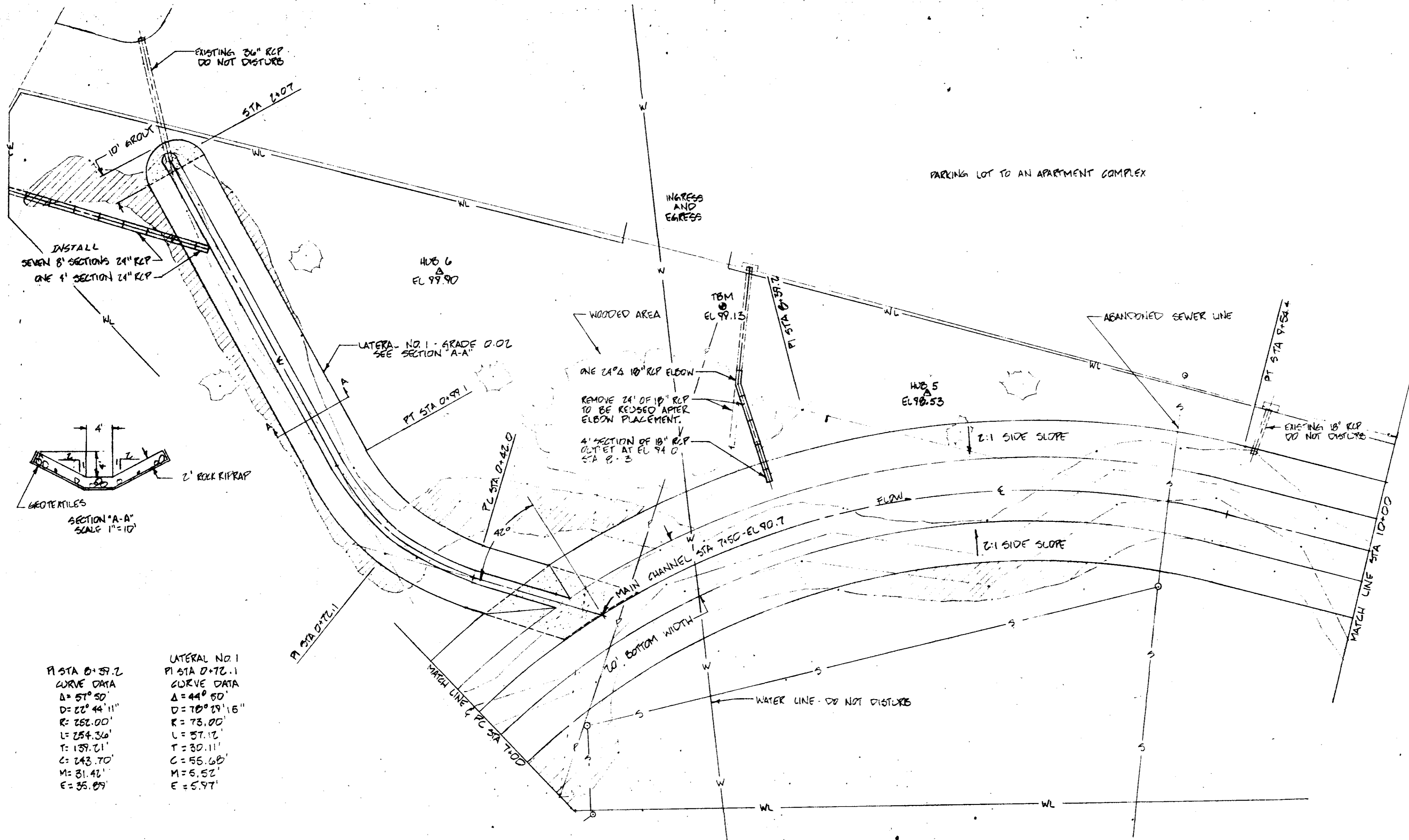


REVISION BLOCK					
#	INITIALS	DATE	#	INITIALS	DATE
1	RSC	4-80			

PINE KNOLL
 CITY OF RIDGE LAND
 MADISON COUNTY, MISSISSIPPI
 EMERGENCY WATERSHED PROTECTION
 PLAN AND PROFILE

U. S. DEPARTMENT OF AGRICULTURE
SOIL CONSERVATION SERVICE

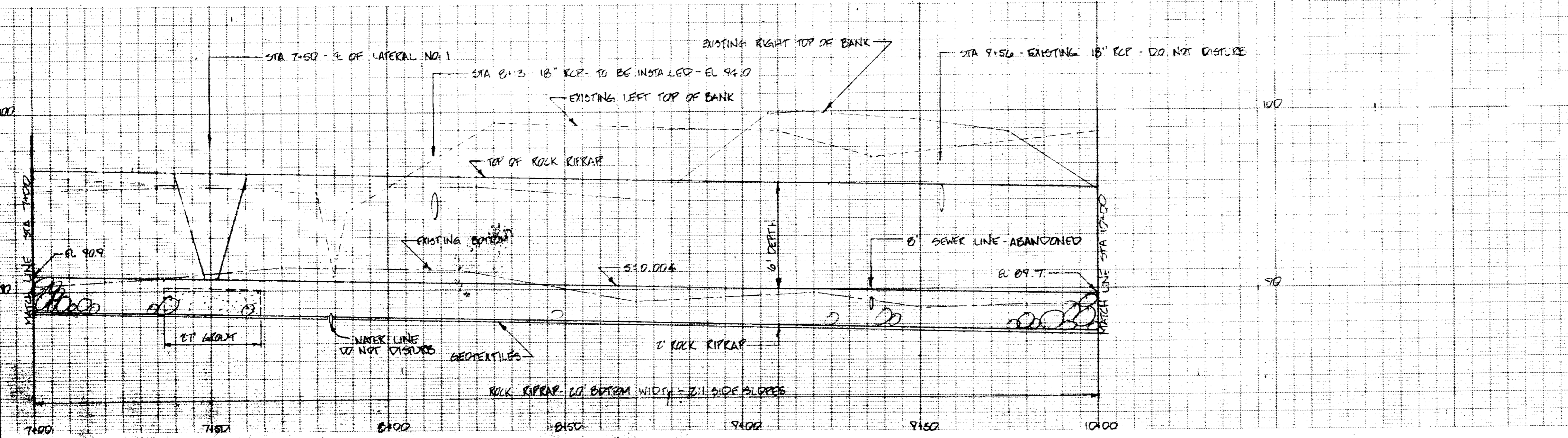
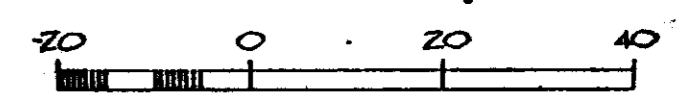
Designed: RRW, RRC	Date: 3-79	Approved by:
Drawn: NEM	Date: 3-79	Title:
Traced:	Sheet No. 3	Drawing No.:
Checked: RRC	Date: 4-79	of 6



P1 STA 0+57.2
 CURVE DATA
 Δ = 57° 50'
 D = 22° 44' 11"
 R = 252.00'
 L = 254.36'
 T = 139.21'
 C = 243.70'
 M = 31.46'
 E = 35.89'

LATERAL NO. 1
 P1 STA 0+72.1
 CURVE DATA
 Δ = 44° 50'
 D = 70° 29' 16"
 R = 73.00'
 L = 57.12'
 T = 30.11'
 C = 55.68'
 M = 5.52'
 E = 5.97'

- LEGEND**
- △ TRANSIT STATION PLOTTED POINT
 - SEWER LINE W/ MANHOLE
 - T— TELEPHONE LINE W/ JUNCTION BOX & POLE
 - P— POWER LINE W/ POLE
 - W— WATER LINE W/ METER
 - G— GAS LINE W/ METER
 - X—X— EXISTING FENCE LINE
 - |— EXISTING FENCE
 - |— EXISTING TOP OF BANK
 - |— APPROX. LIMIT OF CUT
 - |— APPROX. LIMIT OF WORK
 - ////// EARTH FILL
 - ==== CONCRETE GROUT
 - ==== EROSION CONTROL BLANKET

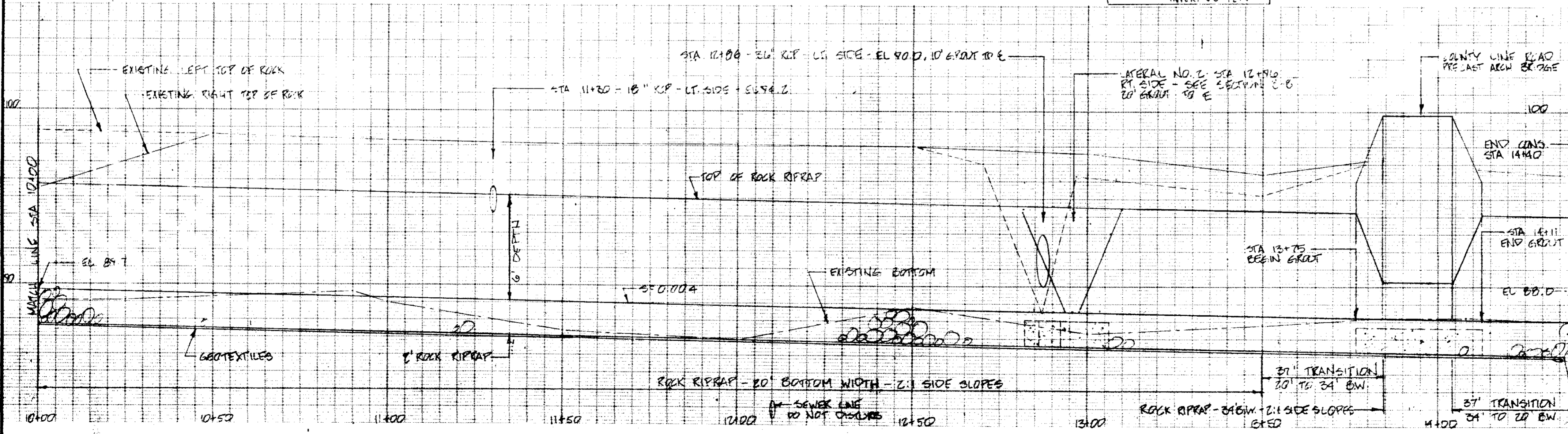
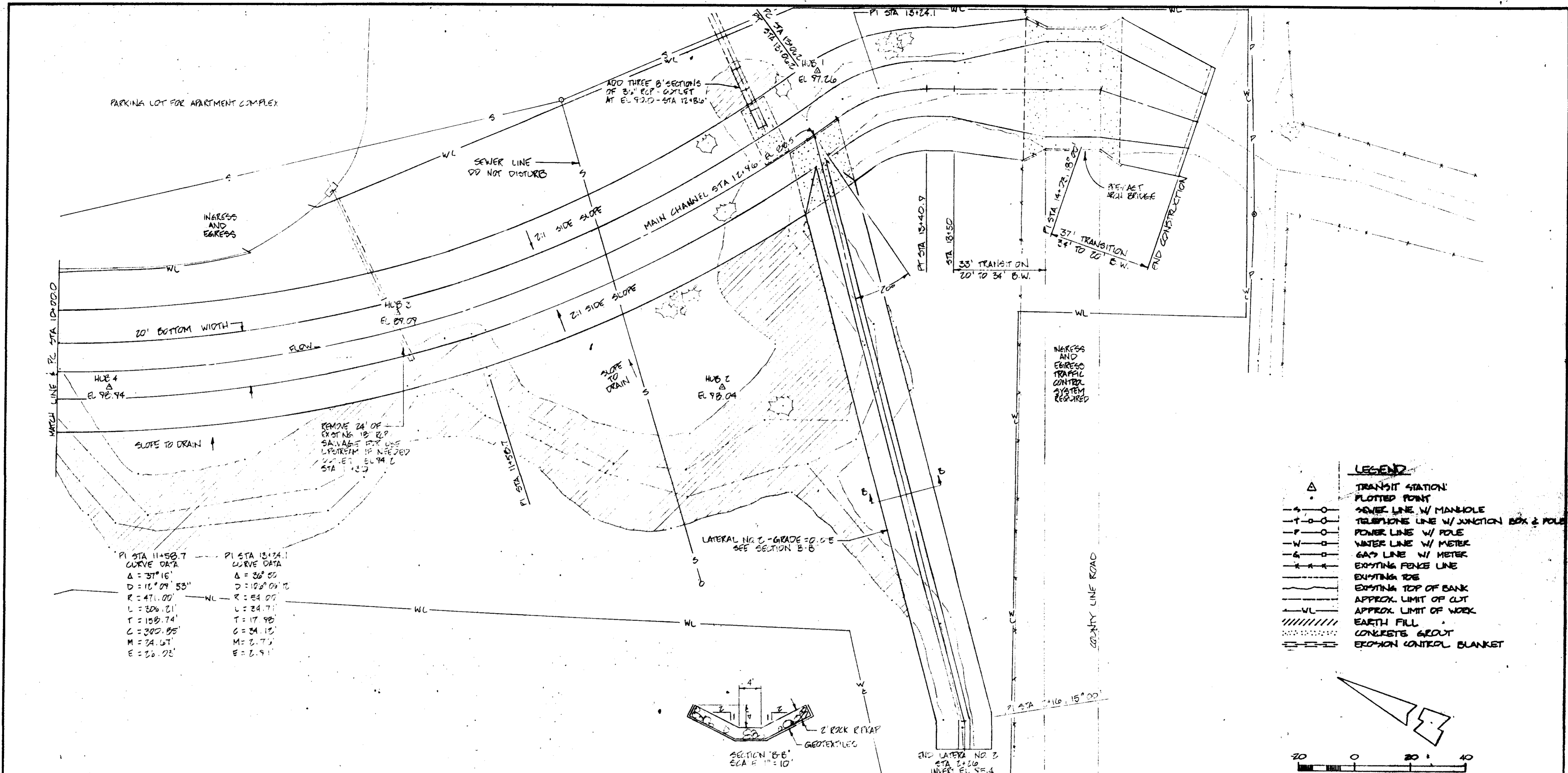


REVISION BLOCK					
#	INITIALS	DATE	#	INITIALS	DATE
1					

PINE KNOLL
 CITY OF RIDGEHILL
 MADISON COUNTY, MISSISSIPPI
 EMERGENCY WATER PROTECTION
 PLAN AND PROFILE

U. S. DEPARTMENT OF AGRICULTURE
SOIL CONSERVATION SERVICE

Designed: <u>REW, RCL</u>	Date: <u>3-29</u>	Approved by: _____
Drawn: <u>NEM</u>	Date: <u>3-29</u>	Title: _____
Traced: _____	Sheet No. <u>4</u>	Drawing No. _____
Checked: <u>RCL</u>	Date: <u>4-28</u>	of <u>6</u>



REVISION BLOCK				
#	INITIALS	DATE	#	INITIALS
1				

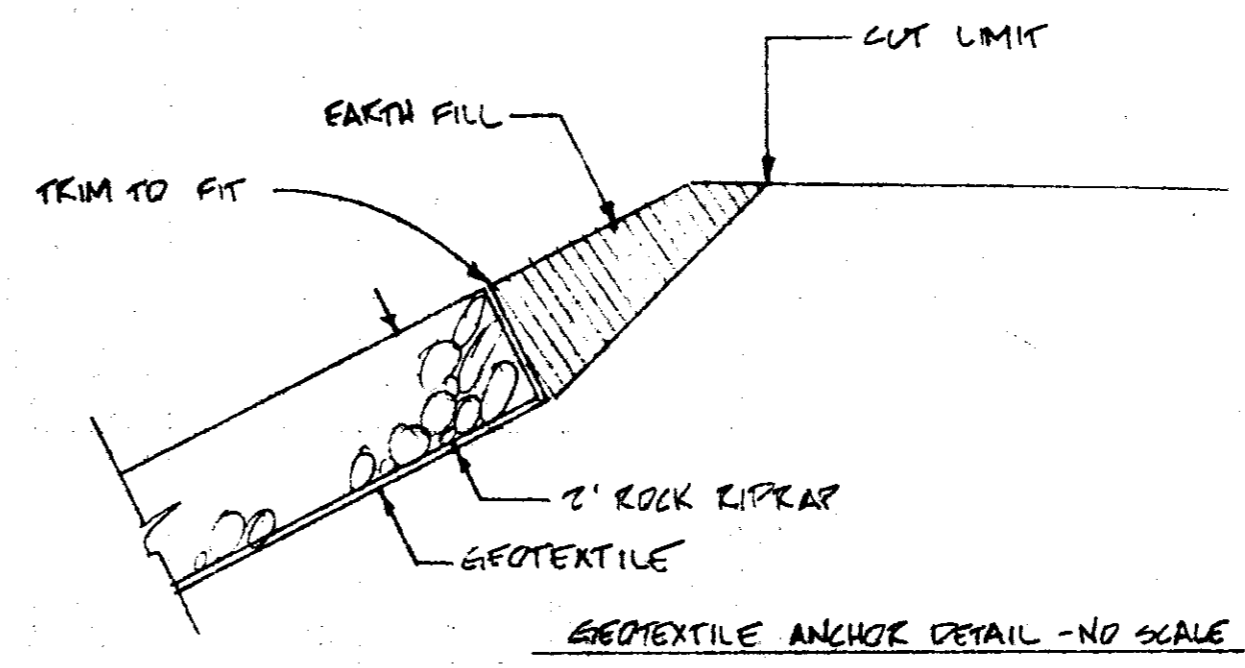
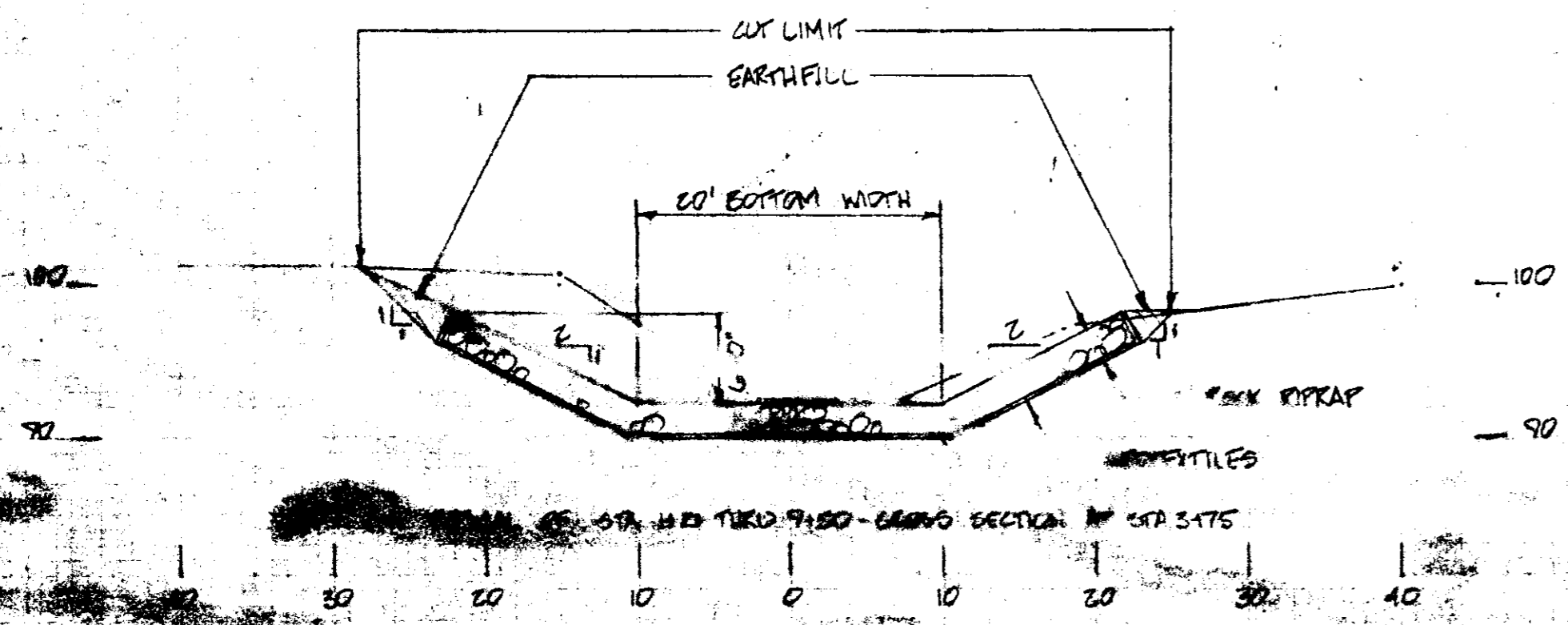
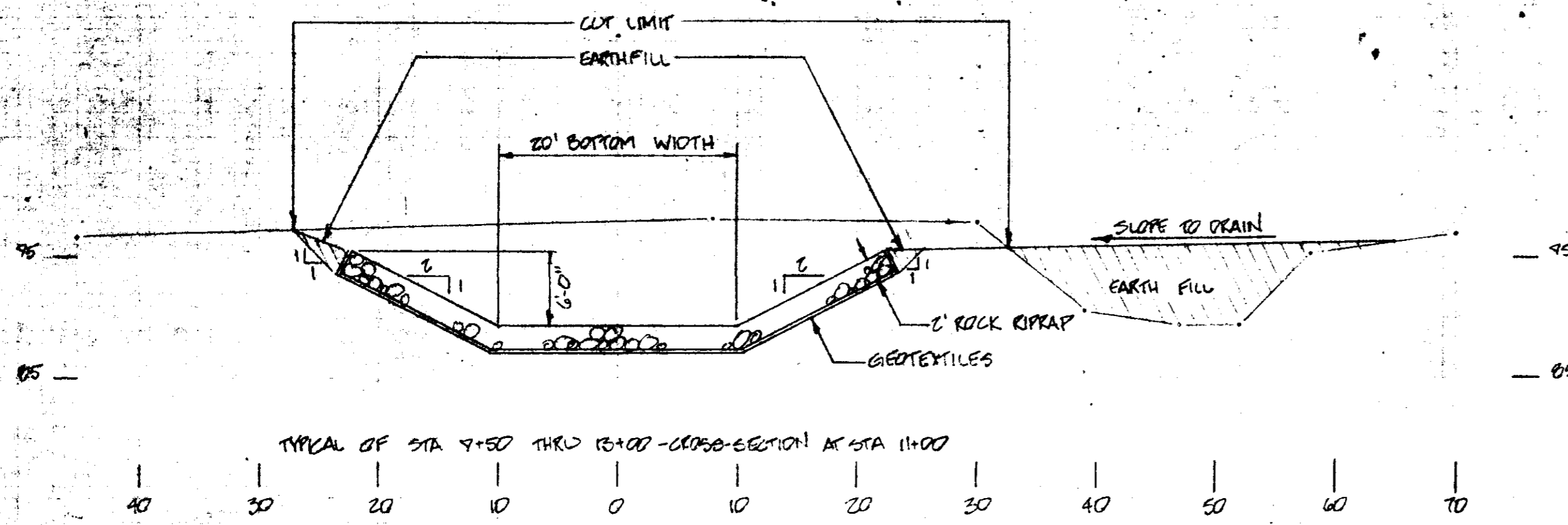
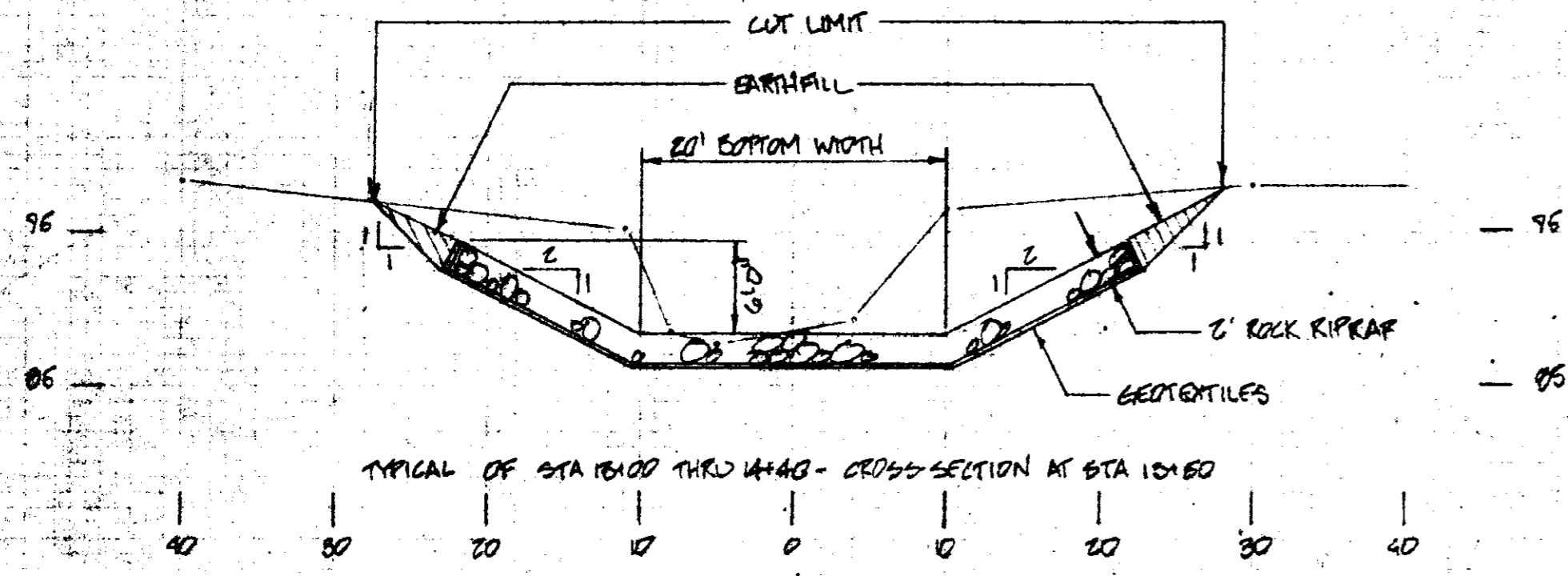
PINE KNOX
 CITY OF RIDGE LAND
 MADISON COUNTY, MISSISSIPPI
 EMERGENCY WATERSHED PROTECTION
 PLAN AND PROFILE

U. S. DEPARTMENT OF AGRICULTURE
SOIL CONSERVATION SERVICE

Date: 2-89
 Approved by: [Signature]
 Title: [Title]
 Drawn: NSM
 Traced: [Signature]
 Checked: RCL

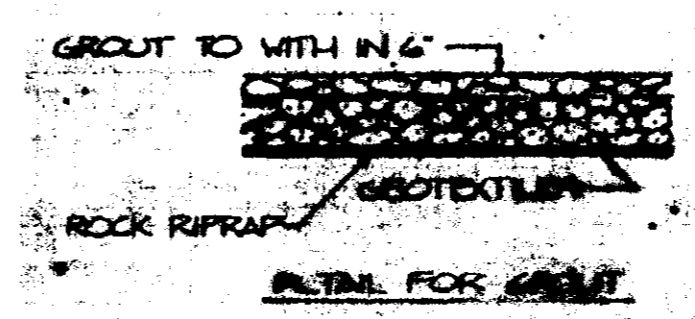
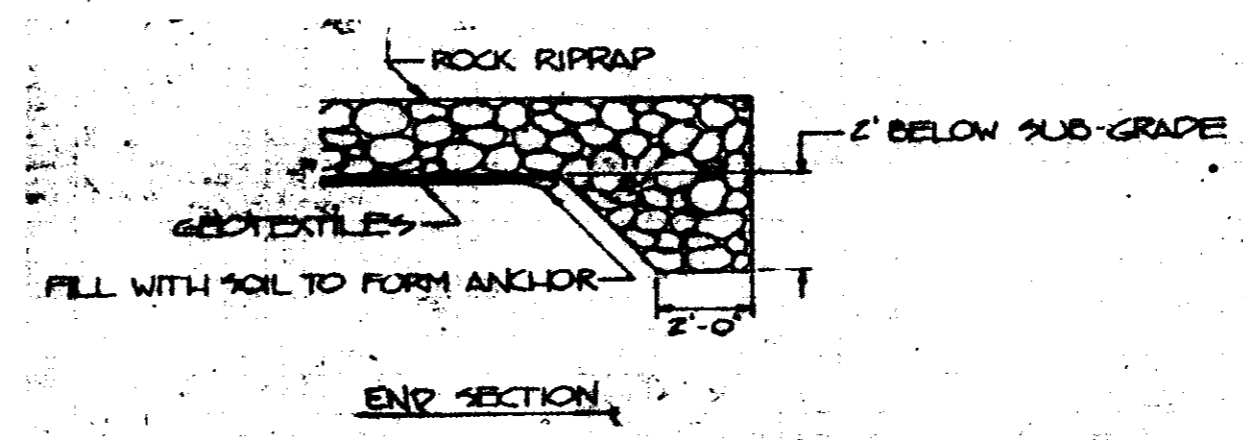
Sheet No. 5 of 6
 Drawing No.

NOTE: ANY EXCAVATION ABOVE TOP OF ROCK RIPRAP SHALL BE CUT AT A 1:1 SLOPE.



SPECIFICATION FOR ROCK RIPRAP NO. 200	
STONE WEIGHT (POUNDS)	CUMULATIVE % LIGHTER BY WEIGHT
300	100
20	50-100
10	15-50
5	0-15

STALLS AND ROCK MUST THAT WILL PASS A 3" SIEVE SHALL CONSIST OF LESS THAN 5% BY WEIGHT.



REVISION BLOCK					
#	INITIALS	DATE	#	INITIALS	DATE
1					

FINE KNOLL
CITY OF RIDGELAND
MADISON COUNTY, MISSISSIPPI
EMERGENCY WATERSHED PROTECTION
TYPICAL SECTIONS AND DETAILS

U. S. DEPARTMENT OF AGRICULTURE
SOIL CONSERVATION SERVICE

Designed: <u>RRW, RSC</u>	Date: <u>2-87</u>	Approved By: _____
Drawn: <u>NEM</u>	Date: <u>2-87</u>	Title: _____
Traced: _____	Checked: _____	Project No. _____
Checked: <u>RSC</u>	Date: _____	Sheet No. _____