

**DETAILED PLANS**  
**PURPLE CREEK CHANNEL IMPROVEMENT**  
**CITY OF RIDGELAND, MISSISSIPPI**

MAYOR

HITE B. WOLCOTT

BOARD OF ALDERMEN

JACK MARTIN

RAYMOND McCLURE

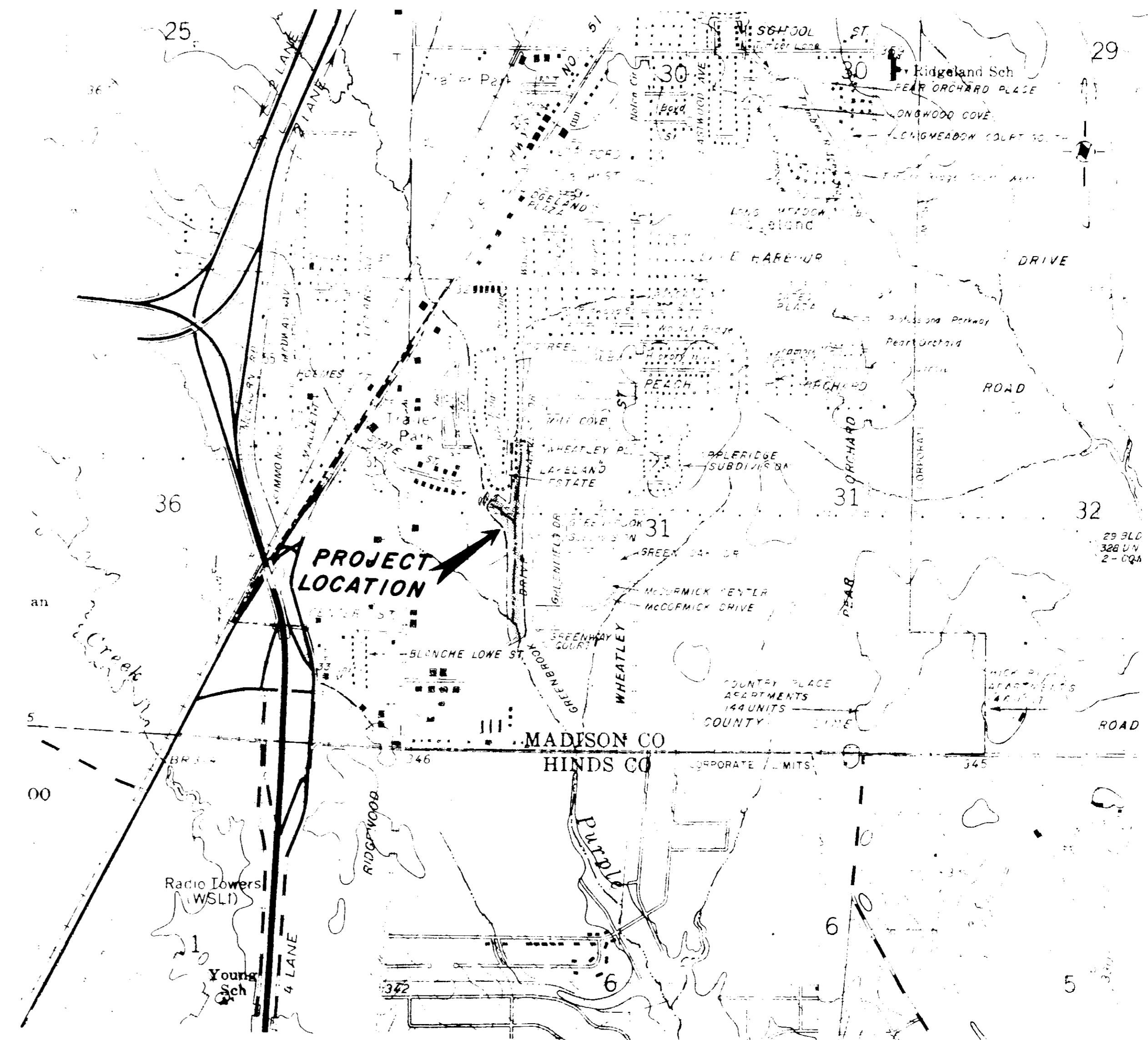
THOMAS MONDAY

DONALD LINDSLEY

HORACE ROSS

CITY ATTORNEY

BOB MONTGOMERY

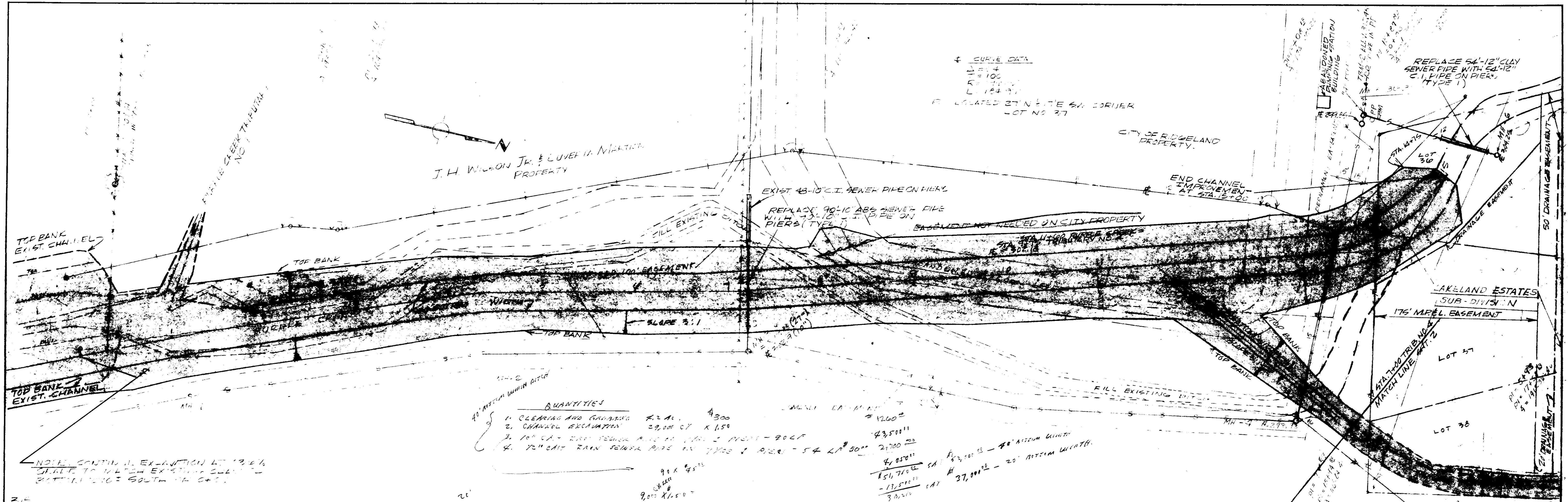


BARTH & ASSOCIATES, INC.  
CONSULTING ENGINEERS  
JACKSON, MISSISSIPPI

**PWP-1611**

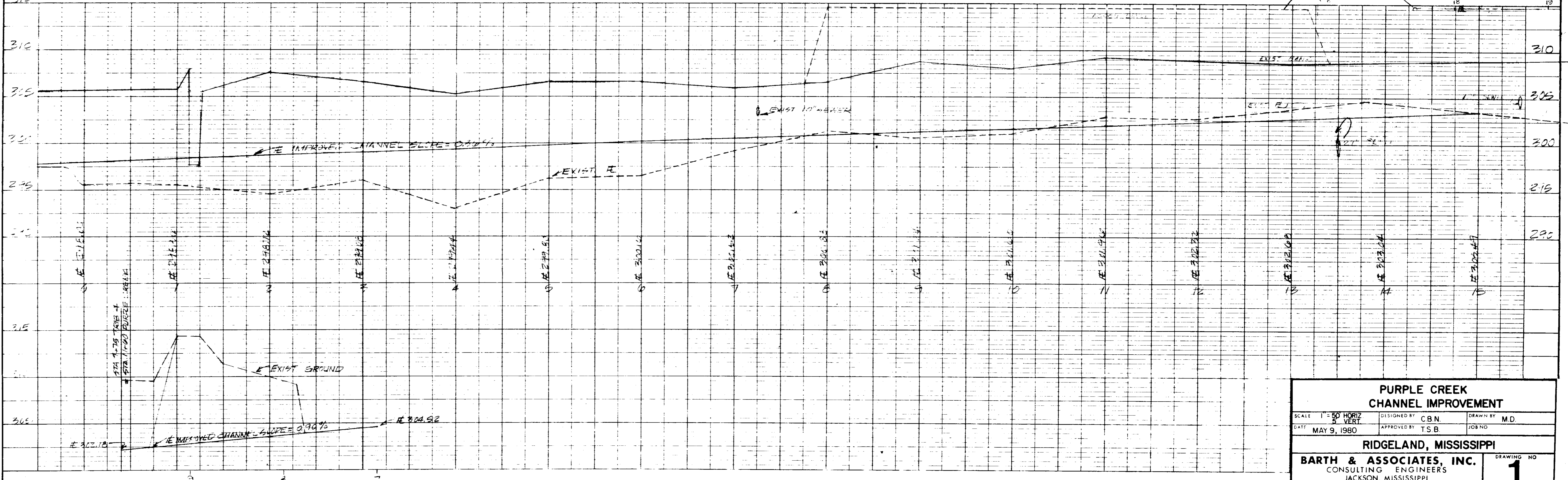
DATE: \_\_\_\_\_  
 BY: \_\_\_\_\_  
 CHECKED: \_\_\_\_\_  
 APPROVED: \_\_\_\_\_  
 NO. OF WAY CHECKED: \_\_\_\_\_

DATE: \_\_\_\_\_  
 BY: \_\_\_\_\_  
 CHECKED: \_\_\_\_\_  
 APPROVED: \_\_\_\_\_  
 NO. OF WAY CHECKED: \_\_\_\_\_



QUANTITIES

1. CLEARING AND GRUBBING	42 AC.	\$300
2. CHANNEL EXCAVATION	29,000 CY	\$150
3. 10\"/>		

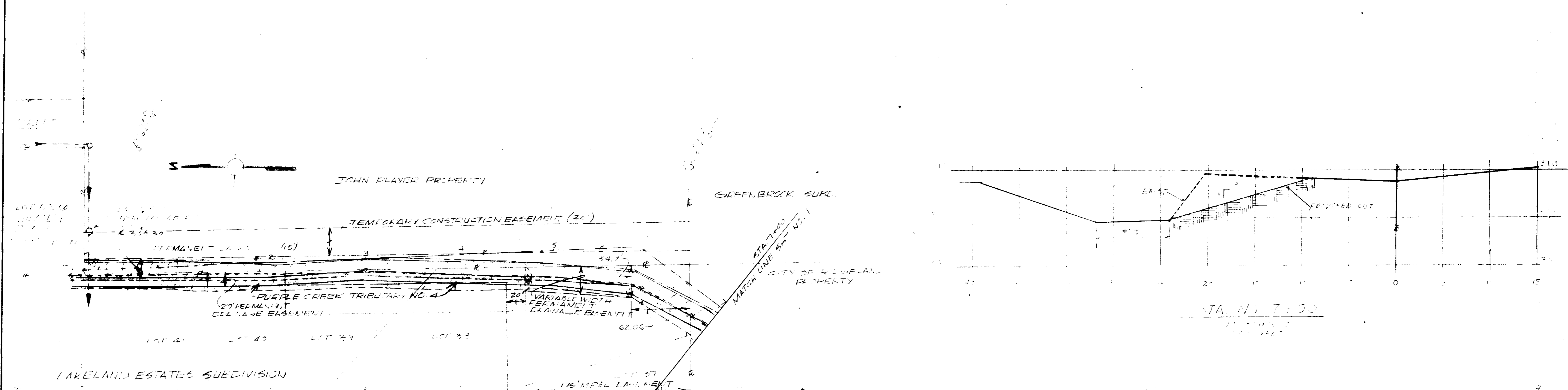


PURPLE CREEK CHANNEL IMPROVEMENT		
SCALE 1" = 50' HORIZ 1" = 5' VERT	DESIGNED BY C.B.N.	DRAWN BY M.D.
DATE MAY 9, 1980	APPROVED BY T.S.B.	JOB NO.
RIDGELAND, MISSISSIPPI		
BARTH & ASSOCIATES, INC. CONSULTING ENGINEERS JACKSON, MISSISSIPPI		DRAWING NO. <b>1</b>

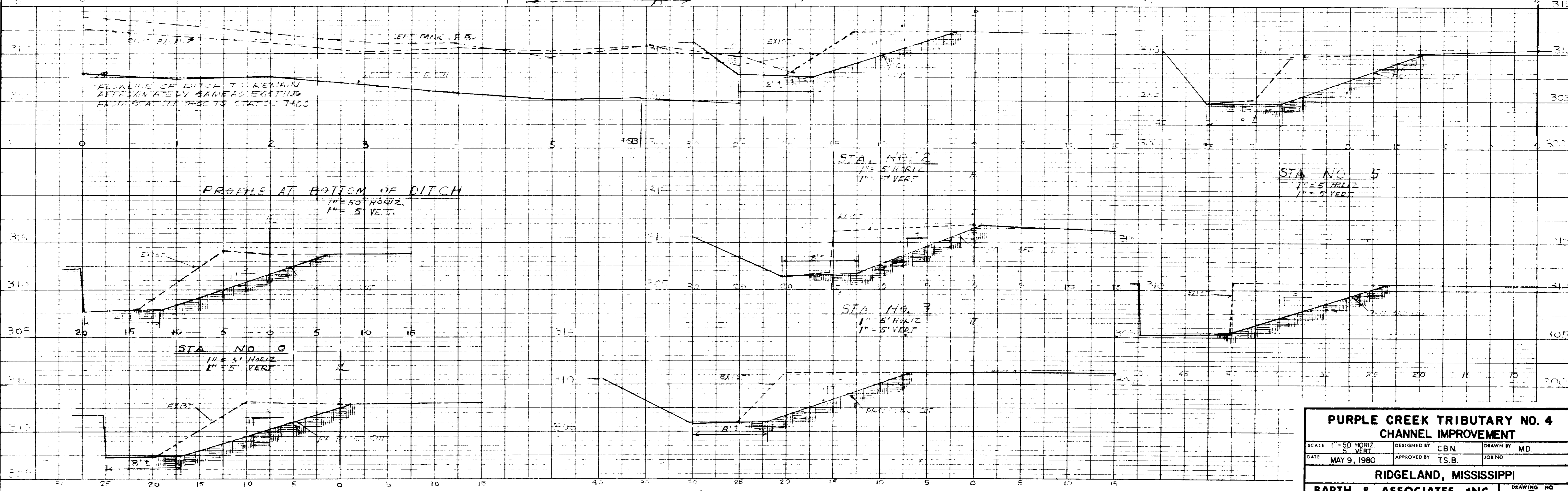
PURPLE CREEK TO PUTNEY NO. 4 P.K. FILE (FOR CONTINUATION OF PROFILE SEE DRAWING NO. 1)

NOTE  
 EXISTING DITCH AT STA. 11+70.00 FOLLOWS GROUND TO A POINT WHERE IT BEGINS TO  
 TO A POINT WHERE IT BEGINS TO FOLLOW THE EAST SIDE OF THE DITCH. THE  
 WILL BE 8 FEET WIDE AT THE POINT WHERE IT BEGINS TO FOLLOW THE  
 INTERSECTION WITH THE DITCH AT STA. 11+70.00. THE DITCH SHALL  
 BE 8 FEET WIDE AT THE POINT WHERE IT BEGINS TO FOLLOW THE  
 BE KEPT BACK AT A MINIMUM OF 2 FEET FROM BOTH SIDES.

PLAN  
 DATE  
 BY  
 CHECKED  
 NOTE BOOK  
 NO.



PROFILE  
 DATE  
 BY  
 CHECKED  
 NOTE BOOK  
 NO.



**PURPLE CREEK TRIBUTARY NO. 4 CHANNEL IMPROVEMENT**

SCALE 1" = 50' HORIZ. 1" = 5' VERT.	DESIGNED BY C.B.N.	DRAWN BY M.D.
DATE MAY 9, 1980	APPROVED BY T.S.B.	JOB NO.
RIDGELAND, MISSISSIPPI		
BARTH & ASSOCIATES, INC. CONSULTING ENGINEERS JACKSON, MISSISSIPPI		DRAWING NO. <b>2</b>