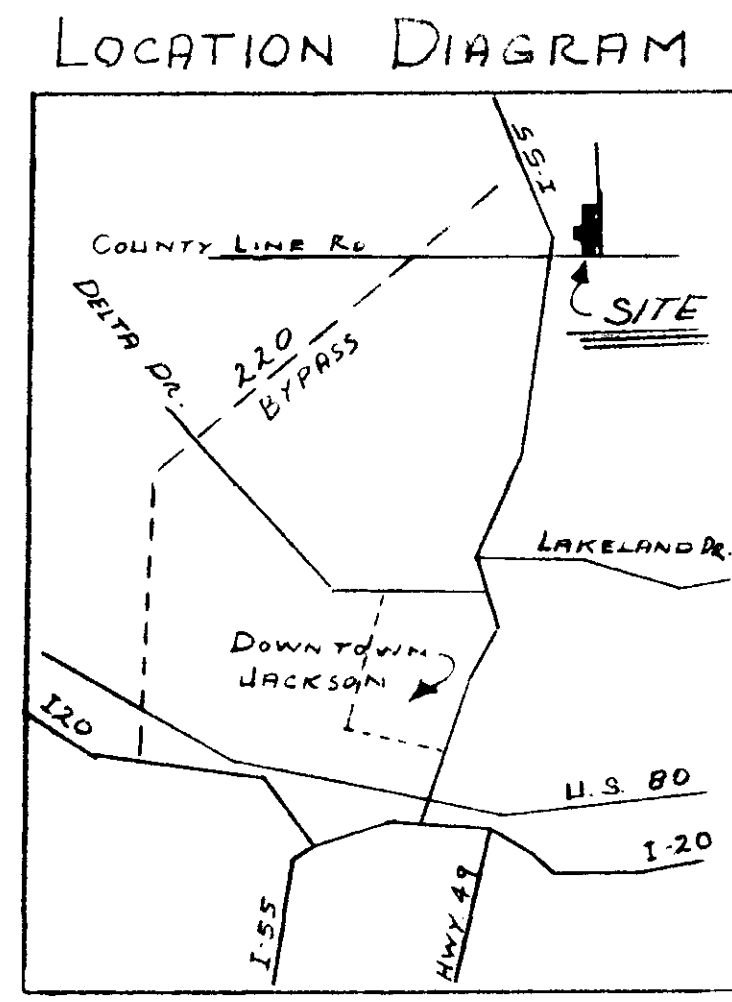
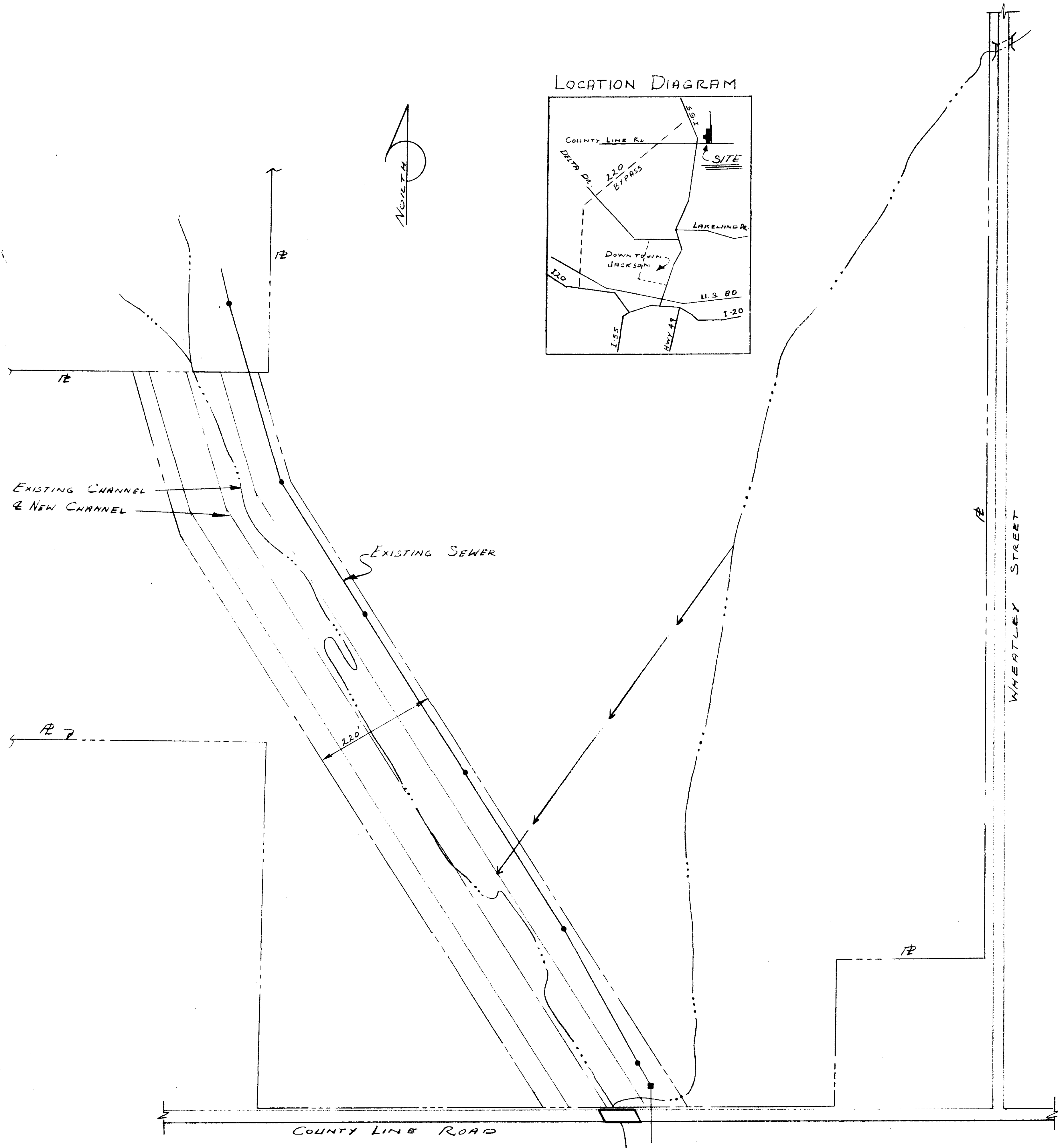


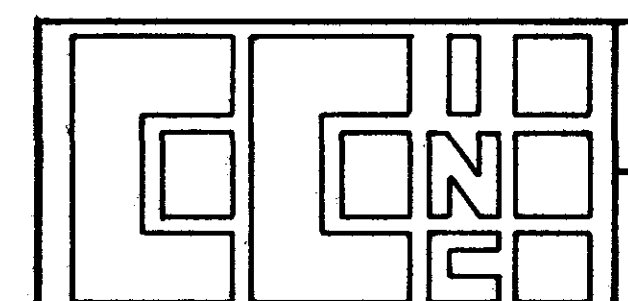
# DRAINAGE IMPROVEMENT HARKINS PROPERTY RIDGELAND, MISSISSIPPI



APPROXIMATE QUANTITIES

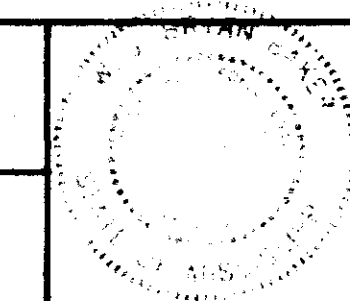
EXCAVATION	
PURPLE CREEK	31,500 CY.
TRIBUTARY	3,500 CY.
	<u>35,000 CY.</u>
RIP RAP	500 SY.
SEEDING	12,500 SY.

- SPECIFICATIONS
1. DEVELOPER IS RESPONSIBLE FOR SETTING GRADE STAKES.
  2. ALL EXCAVATION IS UNCLASSIFIED.
  3. ALL EXCAVATION WILL BE PLACED ON SITE AS INDICATED ON PLANS OR AS DIRECTED BY THE ENGINEER.
  4. FILL TO BE PLACED IN HORIZONTAL LIFTS NOT TO EXCEED 1" LOOSE MEASUREMENT AND ROLLED TO THE DENSITY OF ADJACENT EXISTING MATERIAL, OR AS DIRECTED BY THE ENGINEER.
  5. EXCAVATION WILL BE PAID AT THE BID PRICE PER C.Y. BASED ON BEFORE AND AFTER CROSS-SECTIONS BY THE END AREA METHOD.
  6. SEEDING TO BE DONE BY STANDARD METHODS OF PREPARATION, FERTILIZING, SEEDING (BERMUDA) AND MULCHING TO ASSURE A GOOD GRASS COVER ON ALL SIDE SLOPES AS INDICATED.



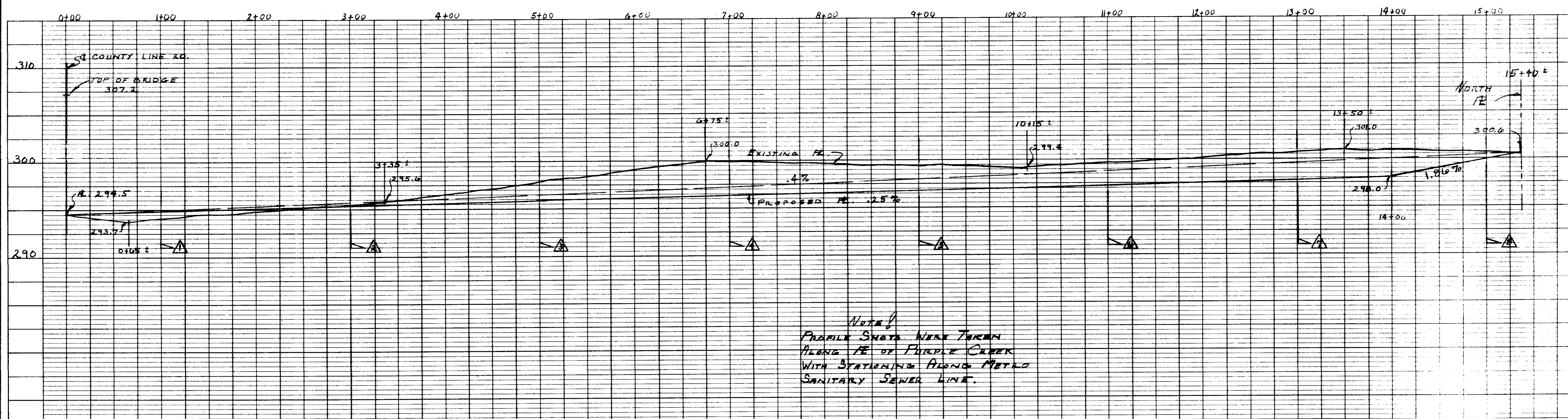
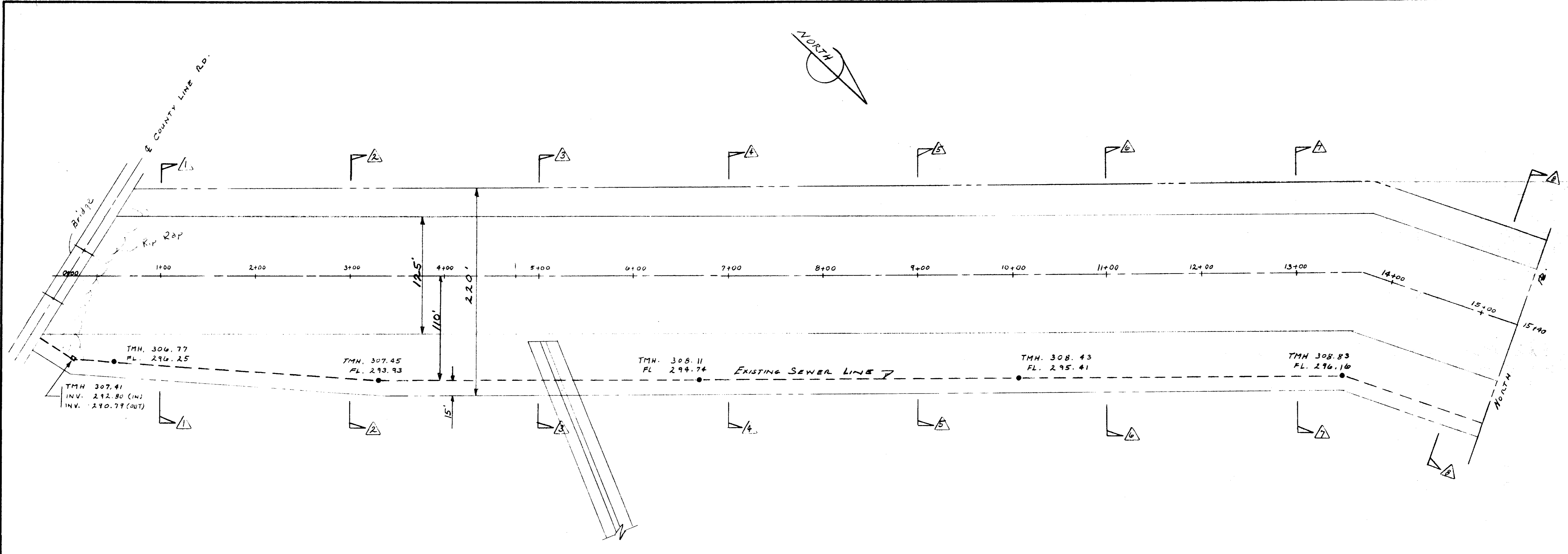
**CASE & ASSOCIATES INC.**  
REGISTERED LAND SURVEYORS

**CONTINENTAL CONSULTANTS INC.**  
PLANNERS · ENGINEERS · LANDSCAPE ARCHITECTS — JACKSON, MISSISSIPPI

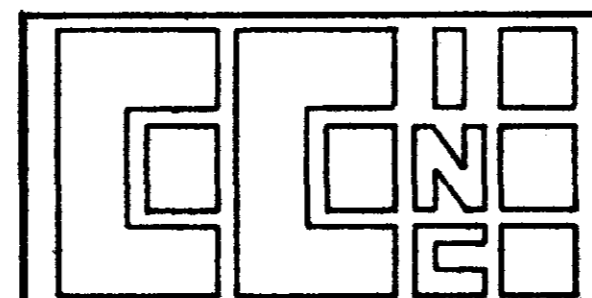


**PWP 1613**

DATE	PROJECT NO.
REVISIONS	SHEET OF
	1



Continental Printing & Blue Print Co., Inc. JACKSON, MISSISSIPPI



**CASE & ASSOCIATES INC.**  
REGISTERED LAND SURVEYORS

**CONTINENTAL CONSULTANTS INC.**  
PLANNERS-ENGINEERS-LANDSCAPE ARCHITECTS — JACKSON, MISSISSIPPI

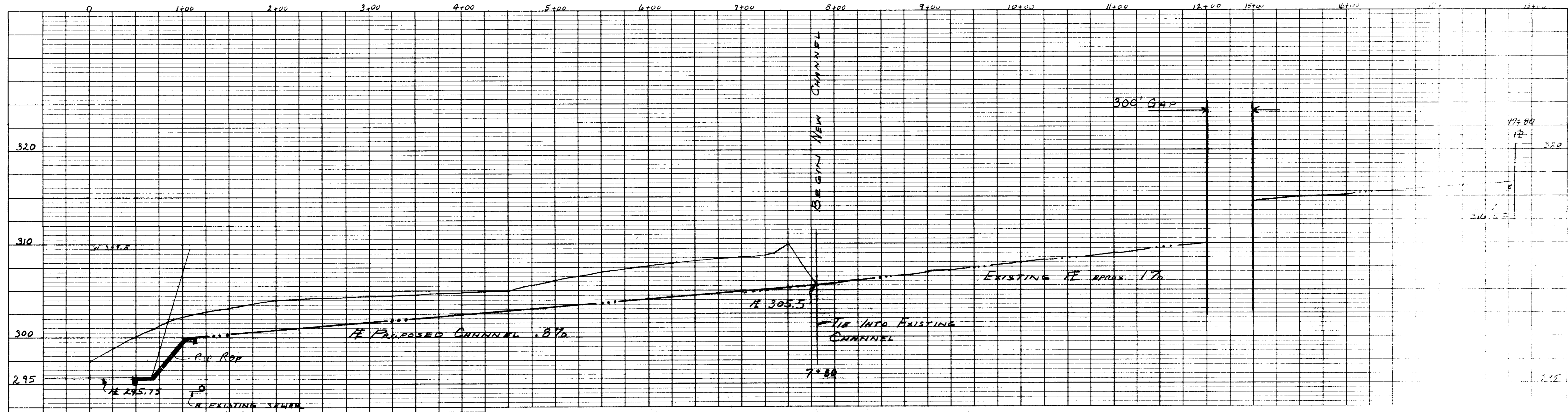
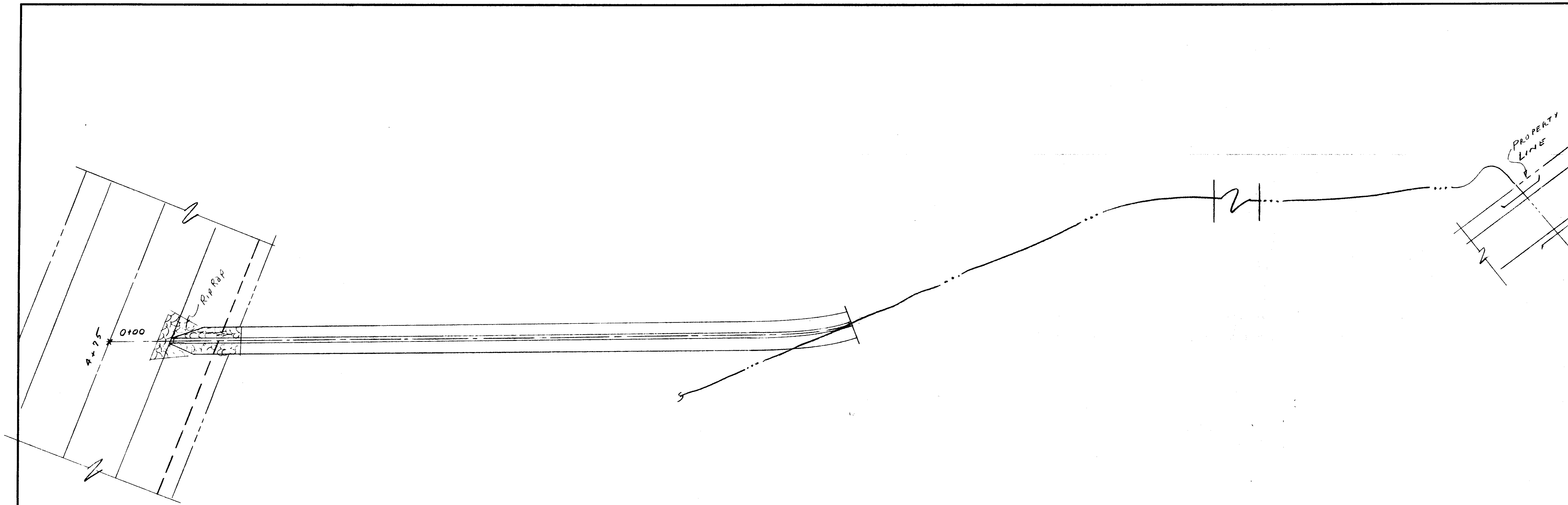
ELEVATIONS ALONG & OF PURPLE CREEK

DATE	PROJECT NO
REVISIONS	SHEET OF

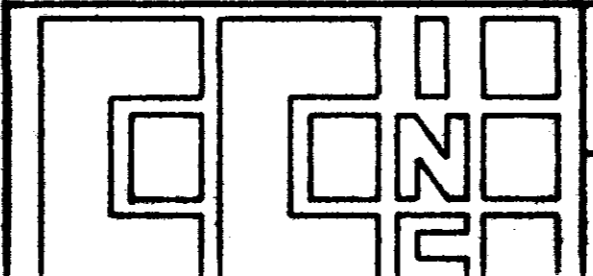








Civil Printing & Blue Print Co., Inc.  
 Jackson, Mississippi



**CASE & ASSOCIATES INC.**  
 REGISTERED LAND SURVEYORS  
**CONTINENTAL CONSULTANTS INC.**  
 PLANNERS ENGINEERS LANDSCAPE ARCHITECTS — JACKSON, MISSISSIPPI

DATE: \_\_\_\_\_  
 REVISION: \_\_\_\_\_

PROJECT NO: \_\_\_\_\_  
 SHEET NO: \_\_\_\_\_