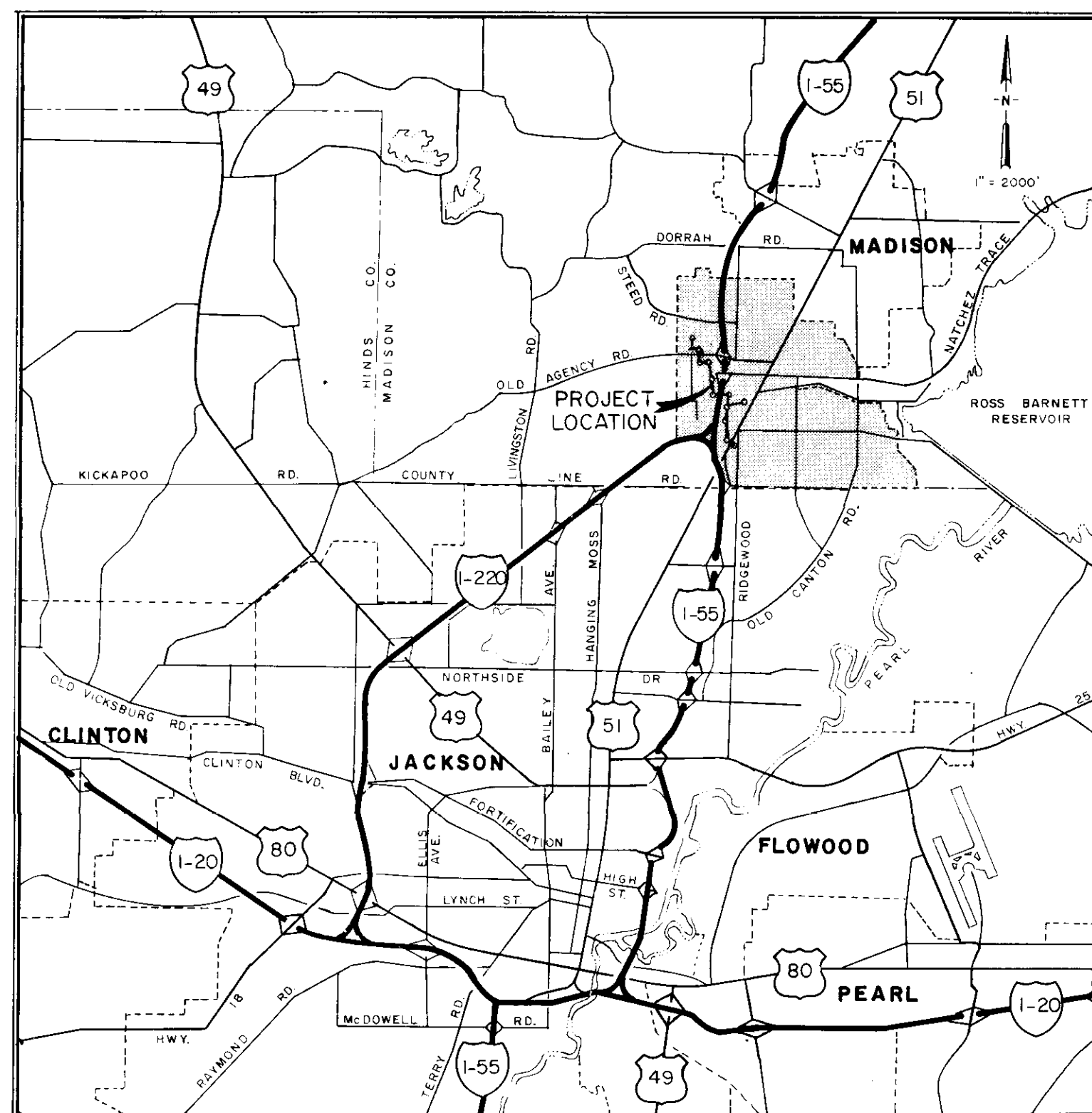


CITY OF RIDGELAND, MISSISSIPPI  
PURPLE CREEK / WHITE OAK CREEK  
SEWER EXTENSION  
PHASE I, CONTRACT II

Mayor:  
Gene F. McGee

Mayor Pro Tem:  
Harvey Carr, Jr.

City Attorney:  
Jerry Mills



Aldermen:

Brian Barcellona  
Al Bible  
Harvey Carr, Jr.  
Linda Davis  
Daryl Smith

Acting Public Works Director:  
Sid Hawthorne

City Clerk:  
Becky Dixon

August, 1989

WAGGONER ENGINEERING, INC.  
Consulting Engineers  
Jackson, Mississippi

PWP-1616

**GENERAL CONSTRUCTION NOTES**

16

1. The existing utility locations shown on plans are approximate only. The Contractor shall coordinate the location (horizontal and vertical) of the existing utilities (power, telephone, gas, water, sewer, etc.) with the appropriate utility company before construction begins.
2. Any utility line or service line encountered during construction, whether shown on plans or not, shall be protected by the Contractor and any repairs necessary due to damage to same by the Contractor shall be at no additional cost to the Owner.
3. The Contractor shall be responsible for verifying horizontal and vertical clearances on all utility crossings before installation.
4. The Contractor shall fertilize and seed all areas where the existing vegetation was removed or disturbed during construction and not required to be solid sodded by the Engineer.

Unsuitable bedding, backfill or material which may be encountered shall be excavated to the limits required and backfilled with acceptable material to the lines and grades shown on the plans.

21

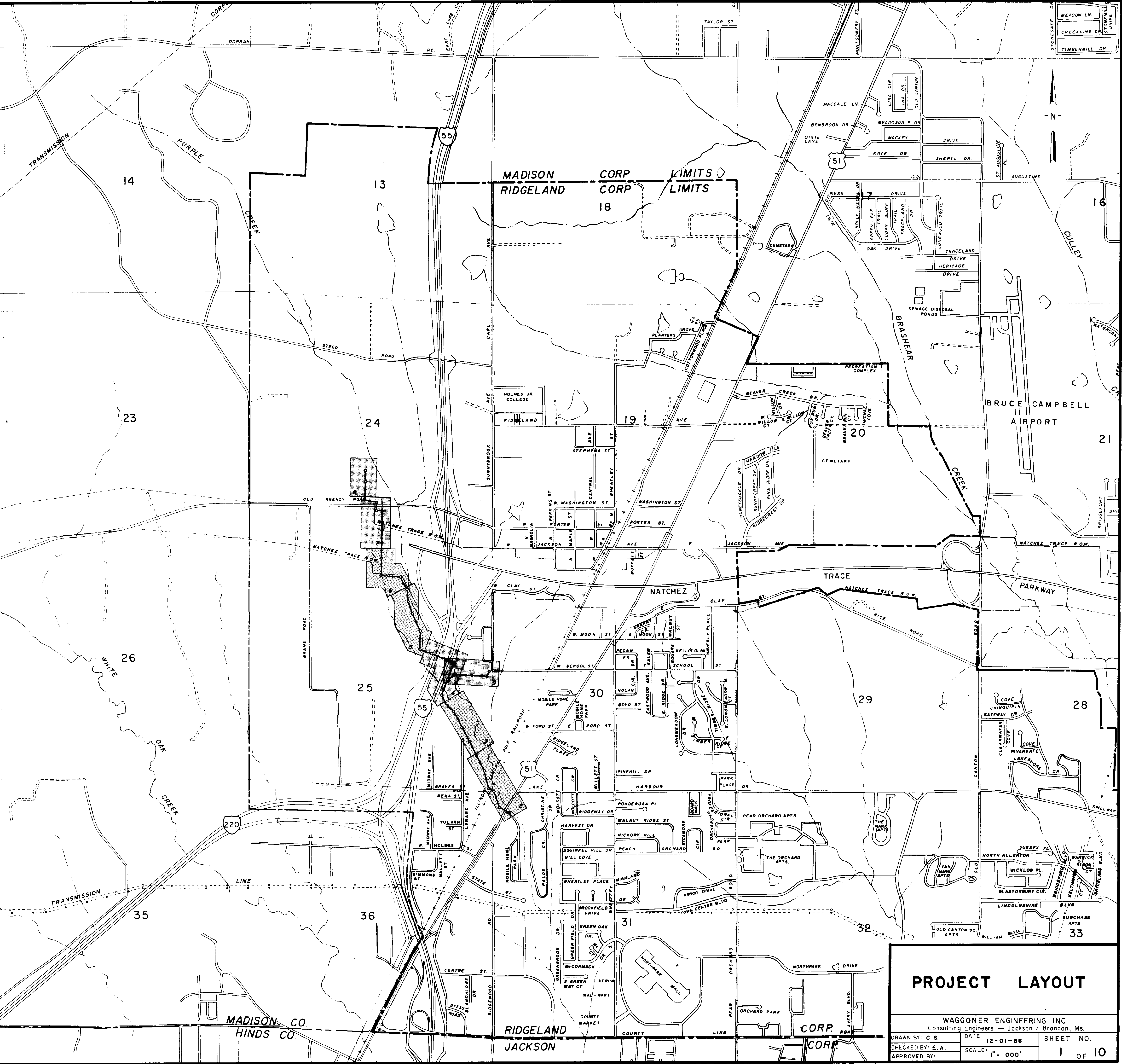
6. Sanitary and storm sewer reach lengths may vary in construction of project to conform to normal joint lengths with prior permission of Engineer.
7. The Contractor shall maintain local traffic to all residences and businesses fronting along the project for the duration of the work.
8. All existing storm sewer pipe within the construction limits shall be removed and replaced by the Contractor as directed.
9. All existing sanitary manholes within the construction limits shall be adjusted to finished grade by Contractor. Any manhole casting salvaged shall be the property of the Owner.
10. Any TBM's indicated on plans which are or may be in conflict with construction activities shall be relocated by Engineer prior to commencement of construction in the immediate area.
11. All detailed construction staking will be by Contractor at no cost to the Owner.
12. All non-municipal utilities will be relocated or adjusted by the affected company to eliminate any conflict with the proposed improvements at no cost to the Contractor.

28

13. The Contractor shall be responsible for completing all sampling and testing of materials, and for submission of same to Engineer for review prior to their use. This shall include select backfill, concrete, asphalt, aggregates and other items as specified by the Engineer. Such prior use testing shall be an absorbed item.
14. The Contractor shall obtain and furnish to the Engineer copies of manufacturers certifications for all sewer piping, storm culverts, castings, specials and seed. Such certification shall state that the subject material meets the specified quality, grade, purity, class or weight, or that the subject material meets or exceeds the requirements of the applicable ASTM, AASHTO, or other standards. Certifications shall be submitted to the Engineer prior to incorporation of the subject material into the project.
15. The Contractor shall verify the invert elevation of existing storm drains and sanitary sewer mains to be adjusted or incorporated into the work prior to initiation of construction on any new lines connecting thereto. Any variations from plan grades shall be reported to the Engineer.

33

16. Cut zones for storm and sanitary sewer, where shown, will be measured from the original ground profile or proposed centerline, whichever is less.
17. Driveway or roadway removal and replacement will be an absorbed cost item by Contractor and included in the lump sum price bid for clearing and grubbing.
18. All fences within construction limits shall be removed and replaced to original condition or better as an absorbed cost to be included in lump sum price bid for clearing & grubbing.



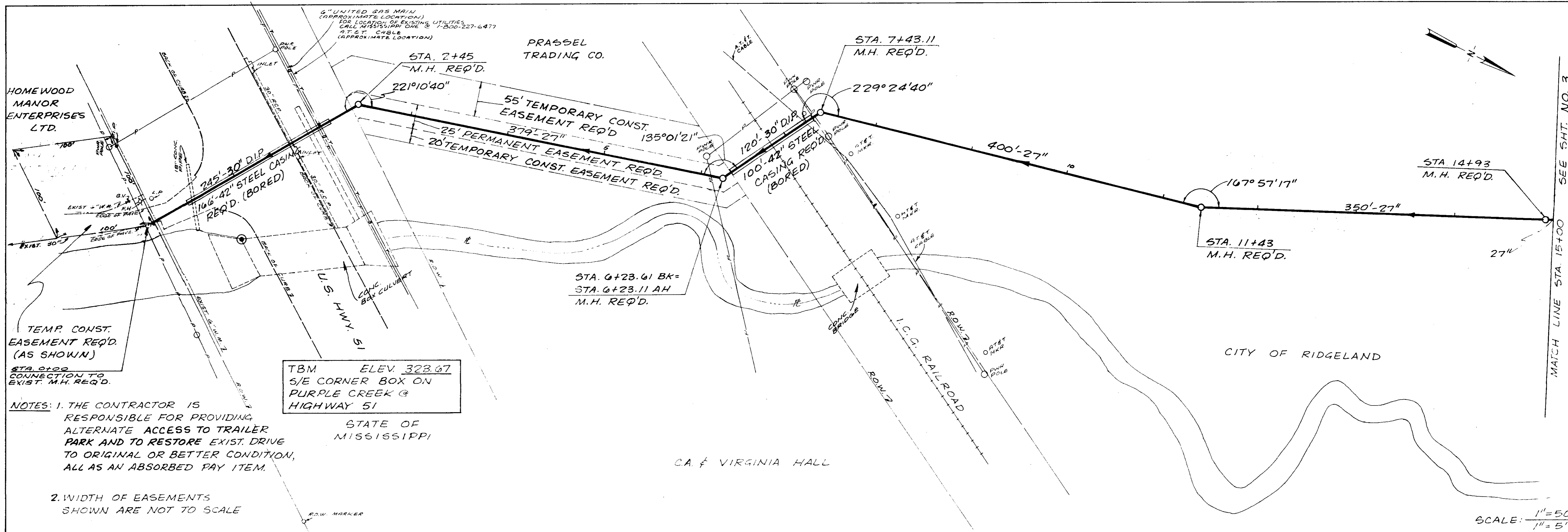
**PROJECT LAYOUT**

WAGGONER ENGINEERING INC.  
Consulting Engineers — Jackson / Brandon, Ms.

DRAWN BY: C.S.	DATE: 12-01-88	SHEET NO.
CHECKED BY: E.A.	SCALE: 1" = 1000'	1 OF 10
APPROVED BY:		

W.E.I. NO. 88-104

PLAN	DATE
SURVEYED	
ALIGNED	
CHECKED	
RT. OF WAY	
NO.	



TEMP. CONST. EASEMENT REQ'D. (AS SHOWN)

STA. 0+00 CONNECTION TO EXIST. M.H. REQ'D.

NOTES: 1. THE CONTRACTOR IS RESPONSIBLE FOR PROVIDING ALTERNATE ACCESS TO TRAILER PARK AND TO RESTORE EXIST. DRIVE TO ORIGINAL OR BETTER CONDITION, ALL AS AN ABSORBED PAY ITEM.

2. WIDTH OF EASEMENTS SHOWN ARE NOT TO SCALE

TBM ELEV. 323.67  
S/E CORNER BOX ON  
PURPLE CREEK @  
HIGHWAY 51

STATE OF  
MISSISSIPPI

CA. & VIRGINIA HALL

SCALE: 1"=50' (HORIZ.)  
1"=5' (VERT.)

PROFILE	DATE
SURVEYED	
GRADES CHECKED	
B.M. NOTED	
STRUCTURE NOTATIONS CHECKED	
NO.	

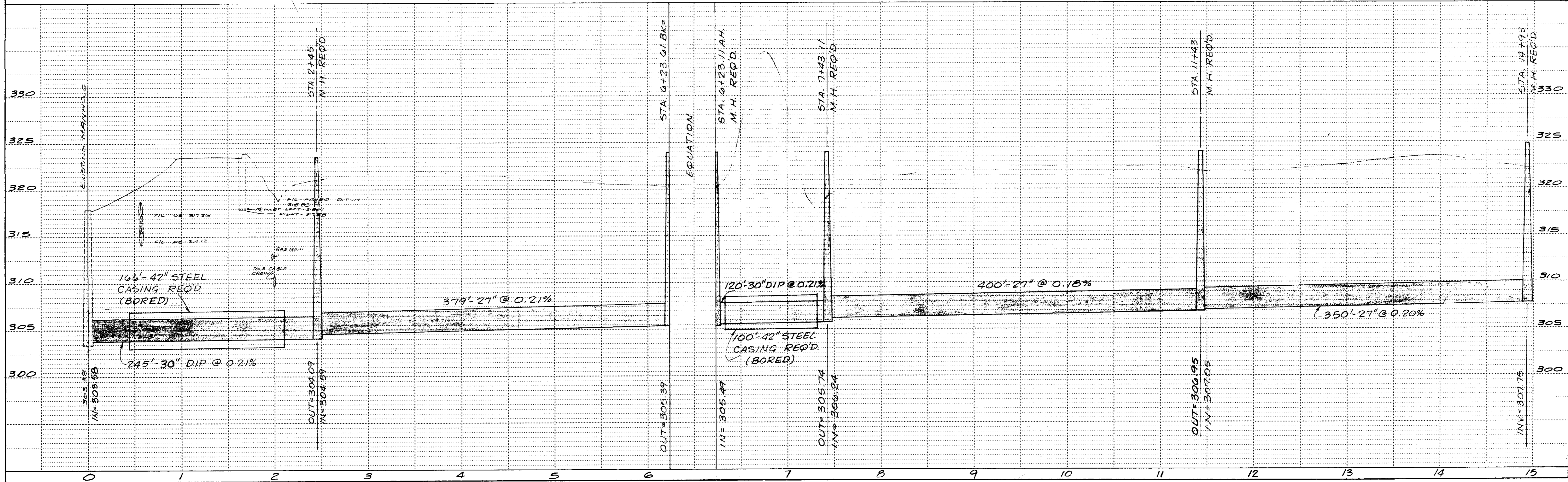
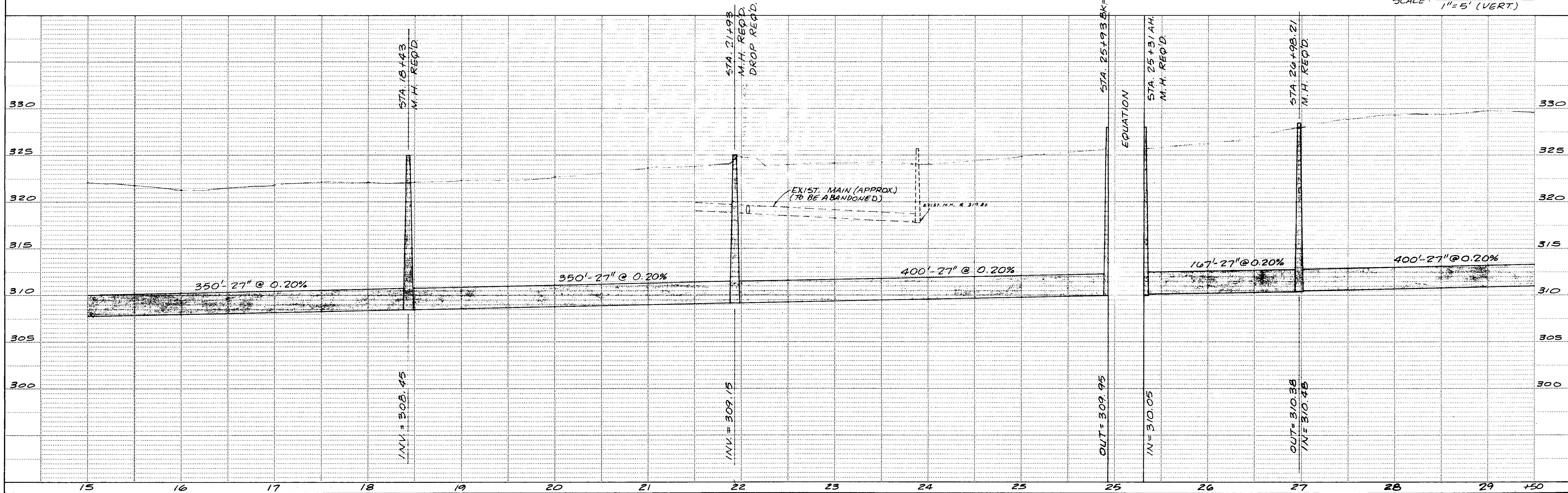
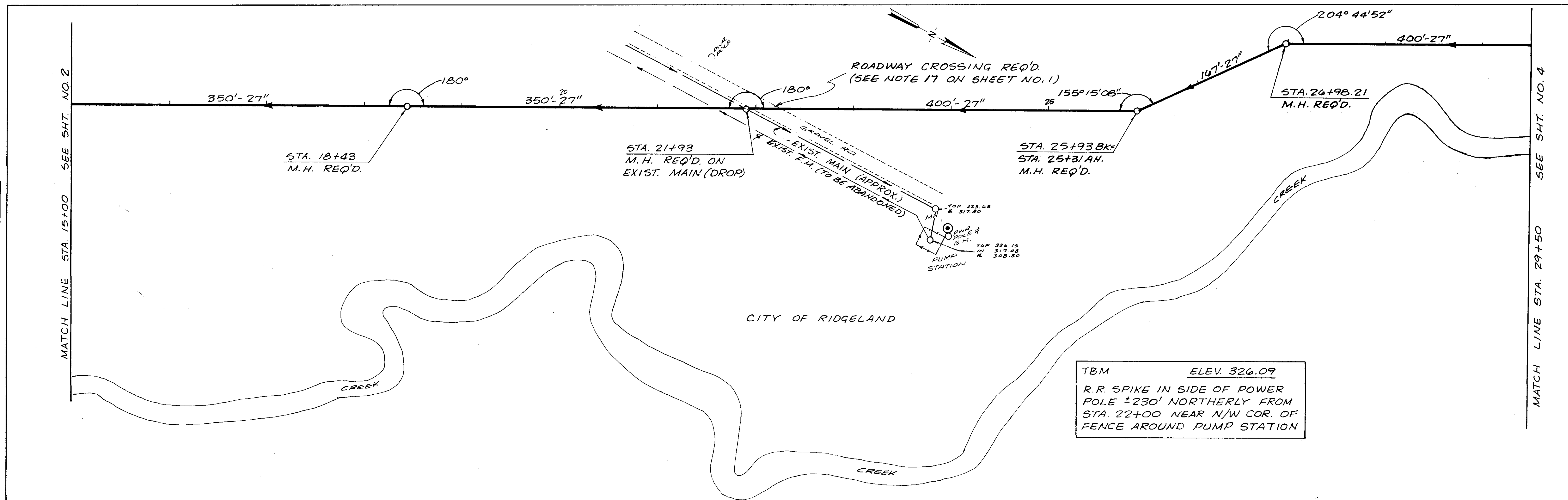


PLATE 1-SINGLE PLAN AND PROFILE-FULL DOT  
PRINTED IN U.S.A.

WAGGONER ENGINEERING INC.  
Consulting Engineers - Jackson / Brandon, MS

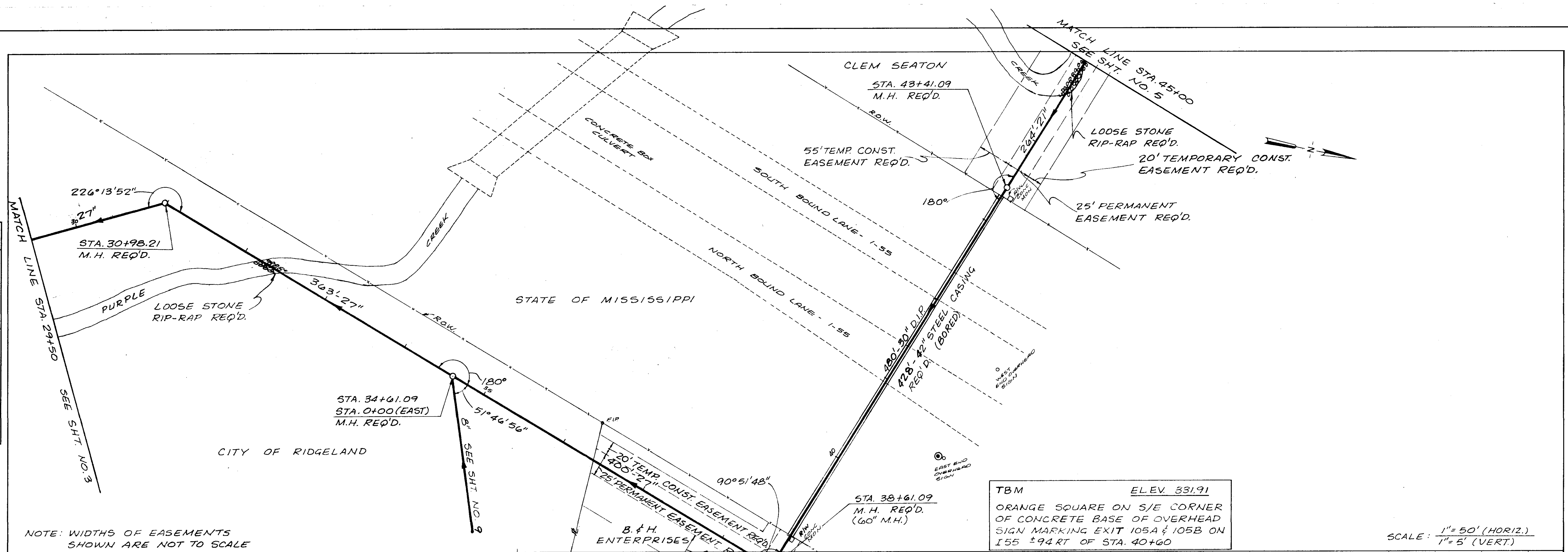
PLAN	SURVEYED	DATE
	PLOTTED	BY
	CHECKED	
	BY	
	NO. OF W.A. CHECKS	
	NO.	

PROFILE	SURVEYED	DATE
	PLOTTED	BY
	CHECKED	
	BY	
	NO. OF W.A. CHECKS	
	NO.	



DATE	
BY	
SUBMITTED	
PLANNING	
DESIGN	
CONSTRUCTION	
OPERATION	
NOTE NO.	
NOTE CHECKED	
AT UP WHY CHECKED	
NO.	

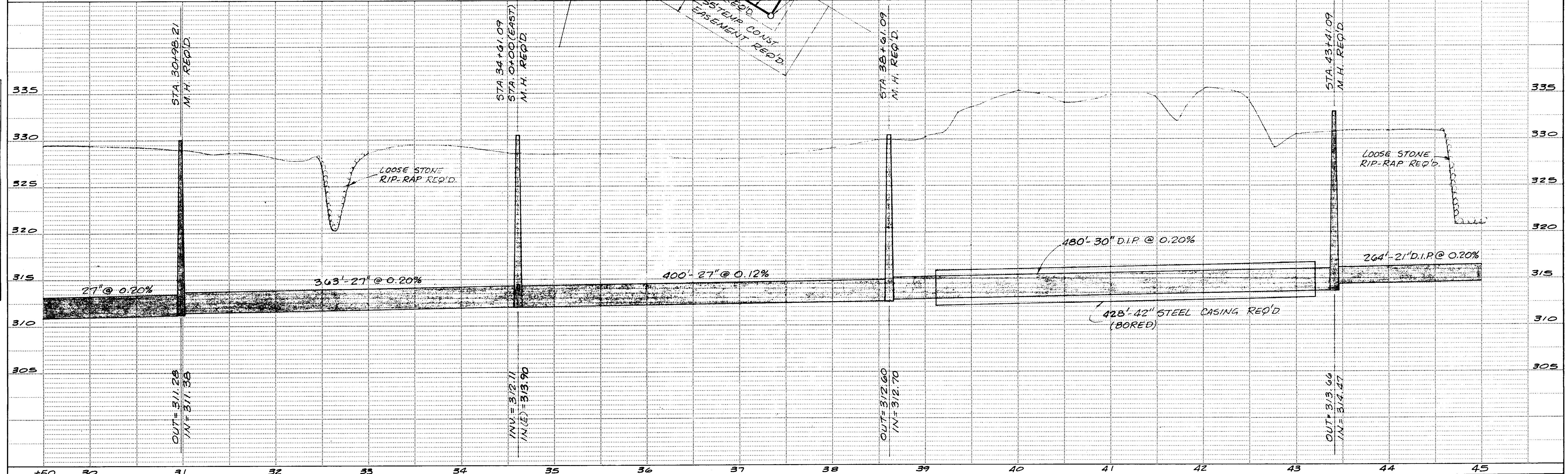
DATE	
BY	
SUBMITTED	
PLANNING	
DESIGN	
CONSTRUCTION	
OPERATION	
NOTE NO.	
NOTE CHECKED	
AT UP WHY CHECKED	
NO.	

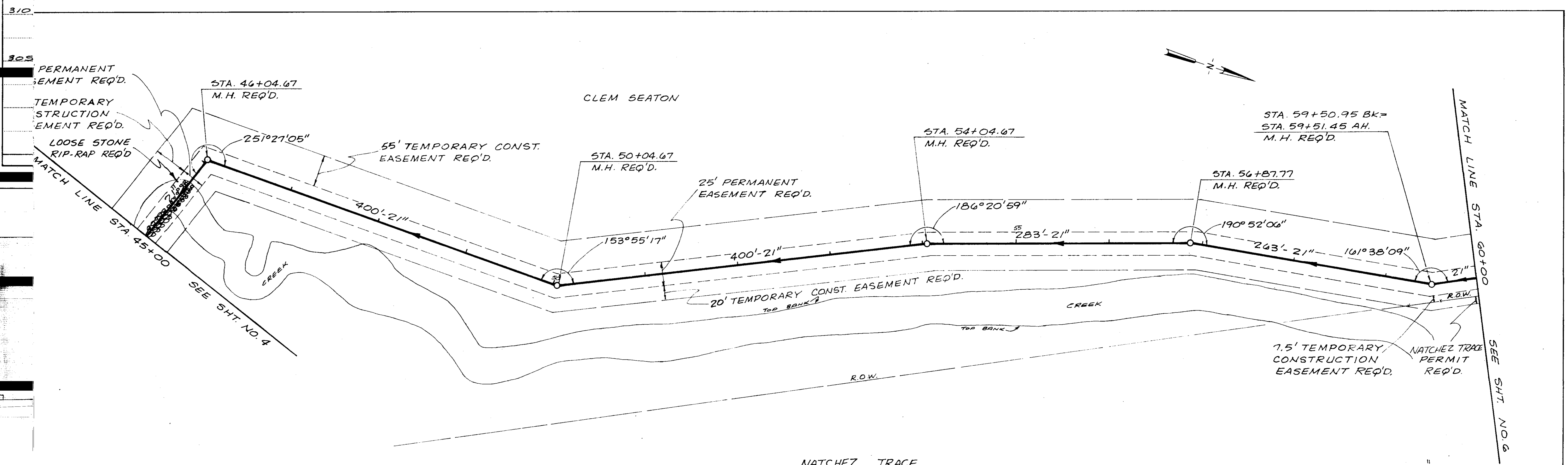


NOTE: WIDTHS OF EASEMENTS SHOWN ARE NOT TO SCALE

TBM ELEV. 331.91  
 ORANGE SQUARE ON S/E CORNER OF CONCRETE BASE OF OVERHEAD SIGN MARKING EXIT 105A & 105B ON I-55 ± 94 RT OF STA. 40+00

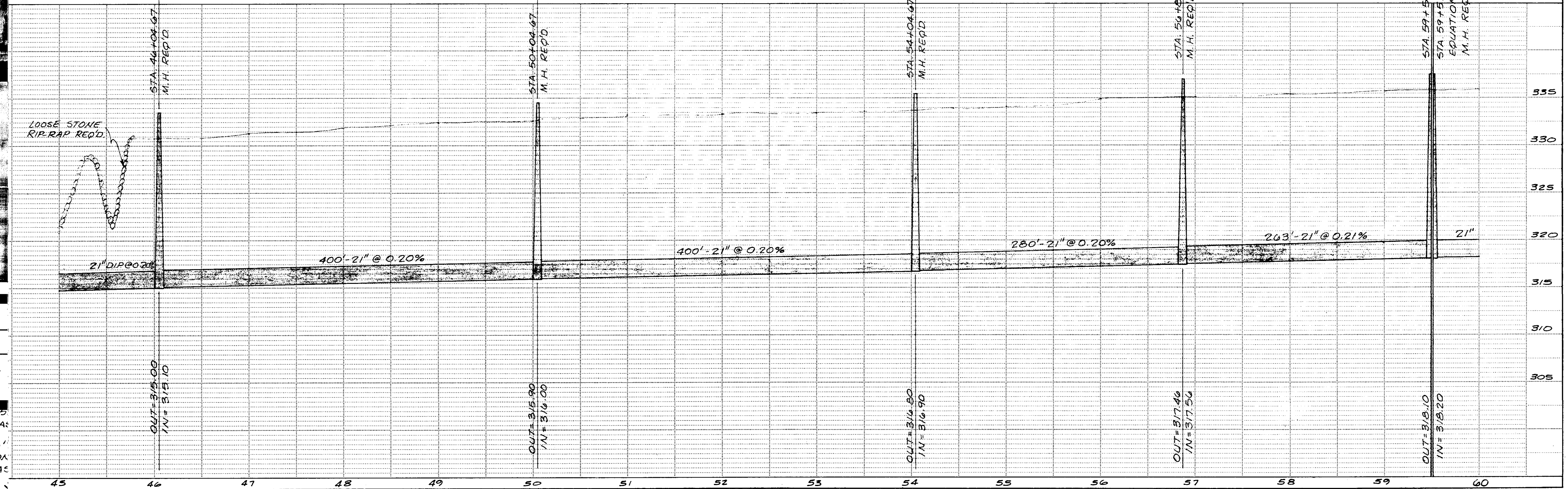
SCALE: 1" = 50' (HORIZ.)  
 1" = 5' (VERT.)





NOTE: WIDTHS OF EASEMENTS SHOWN ARE NOT TO SCALE

SCALE: 1" = 50' (HORIZ.)  
 1" = 5' (VERT.)

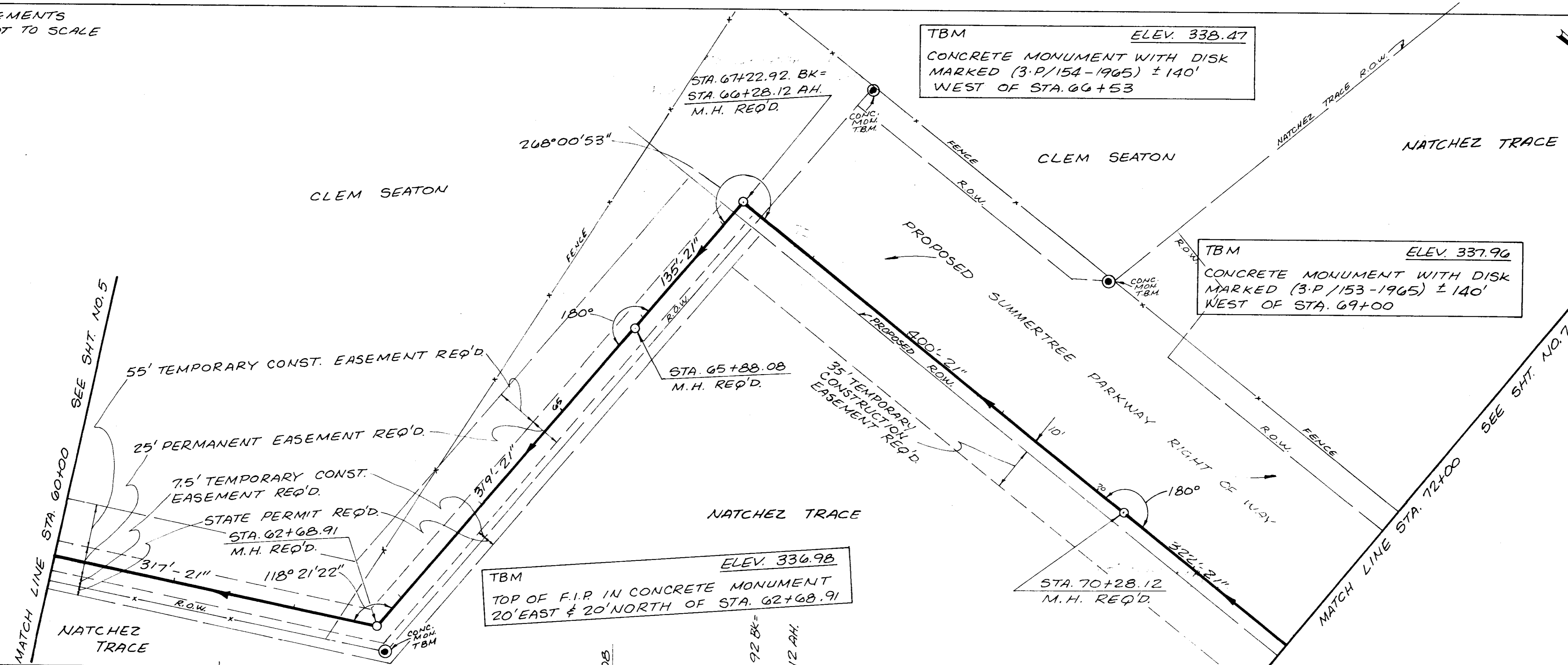


DATE	

NOTE: WIDTH OF EASEMENTS SHOWN ARE NOT TO SCALE

PLAN	SURVEYED	DATE
	BY	
	NOTED	
	ALIGNED	
	CHECKED	
	RT. OF WAY	
	CHECKED	
	NO.	

PROFILE	SURVEYED	DATE
	BY	
	NOTED	
	GRADES	
	CHECKED	
	STRUCTURE	
	NOTATIONS	
	CHKO.	
	NO.	



SCALE: 1" = 50' (HORIZ.)  
1" = 5' (VERT.)

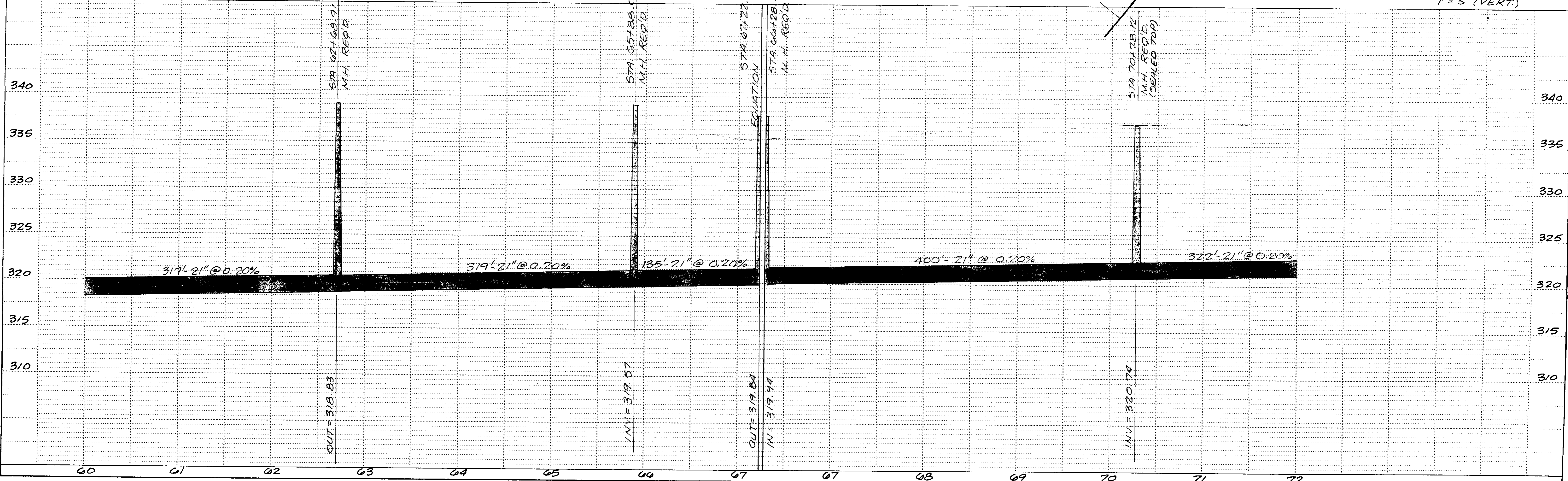


PLATE 1-SINGLE PLAN AND PROFILE-FULL DOT  
PRINTED IN U.S.A.

PLAN  
 SURVEYED  
 PLOTTED  
 CHECKED  
 RT. OF WAY CHECKED  
 NO. \_\_\_\_\_  
 DATE \_\_\_\_\_

PROFILE  
 SURVEYED  
 GRADES CHECKED  
 B. M. NOTED  
 STRUCTURE NOTINGS CHKD  
 NO. \_\_\_\_\_  
 DATE \_\_\_\_\_

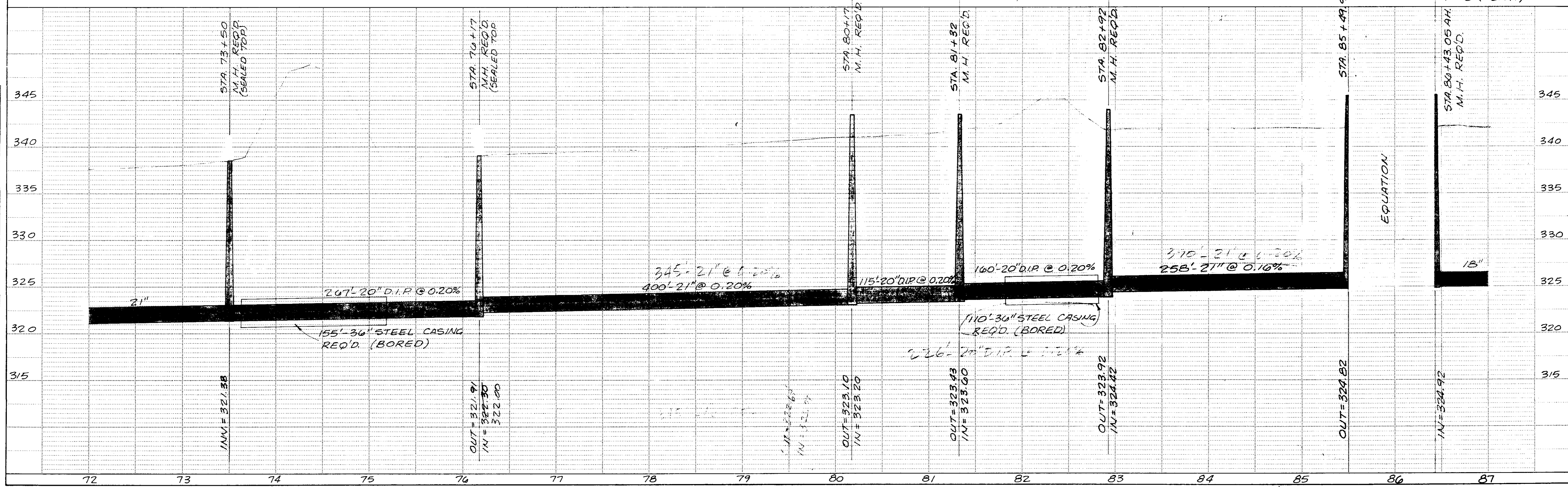
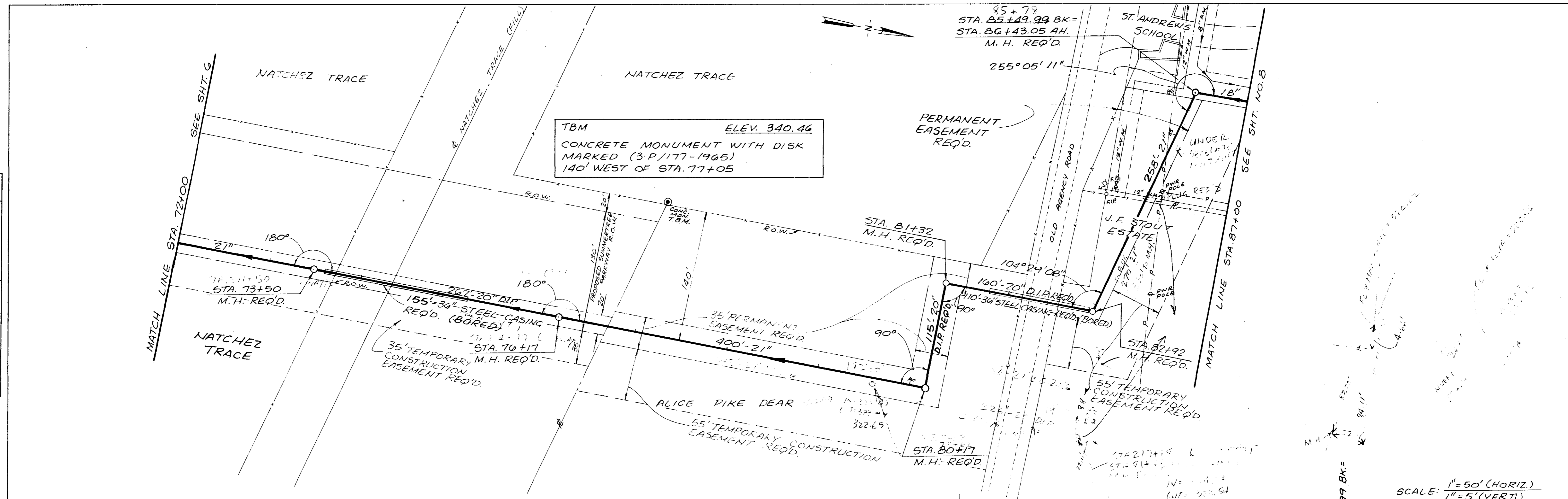
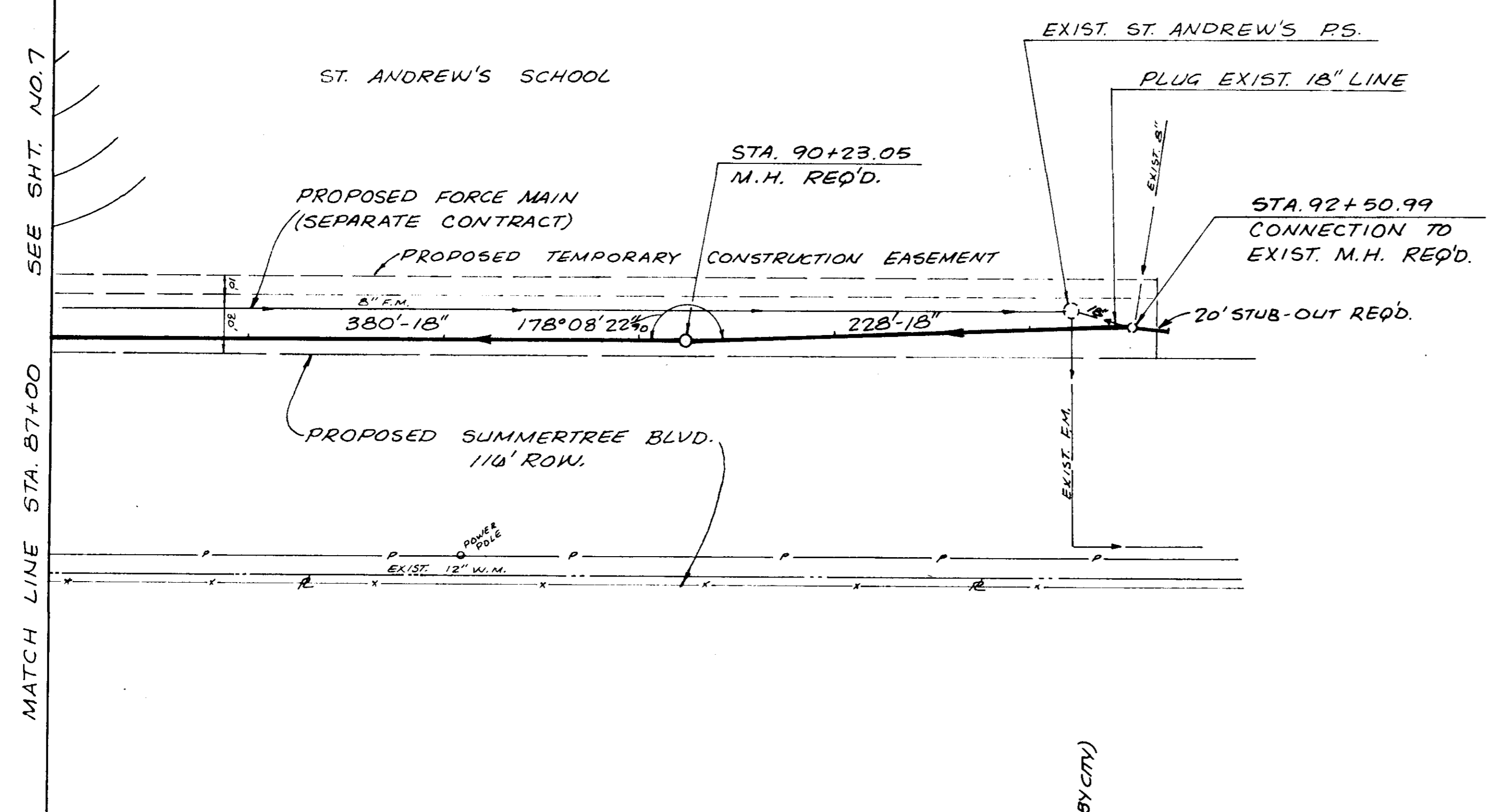


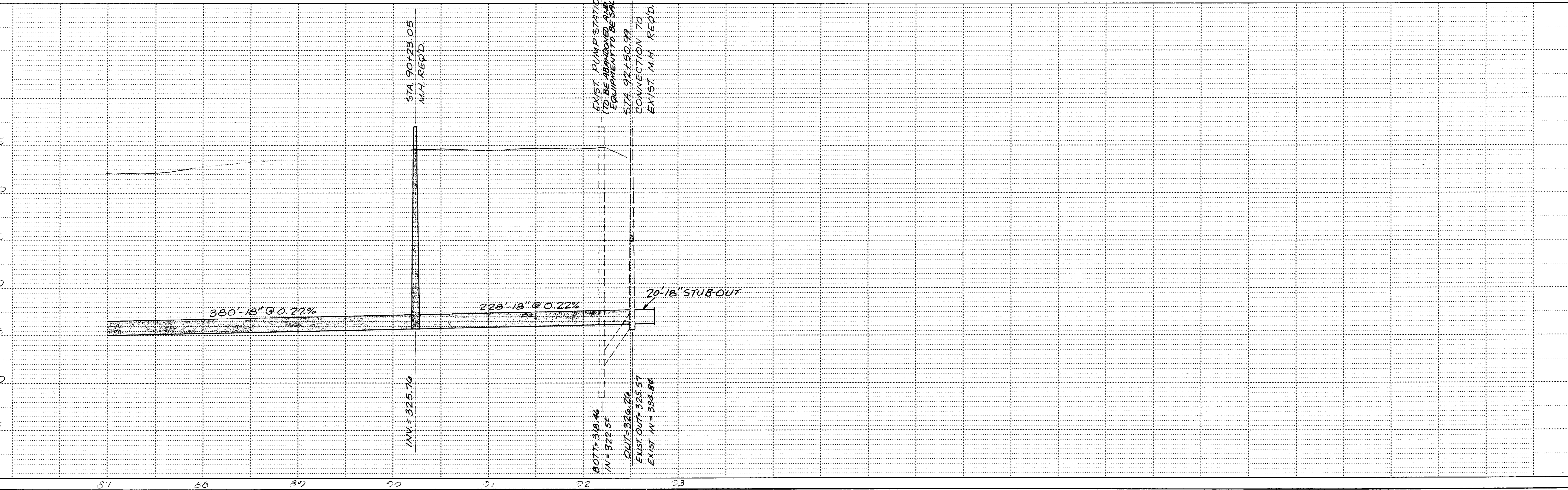
PLATE 1-SINGLE PLAN AND PROFILE-FULL DOT  
 PRINTED IN U.S.A.

WAGGONER ENGINEERING INC.  
 Consulting Engineers - Jackson / Brandon, MS





SCALE: 1" = 50' (HORIZ.)  
 1" = 5' (VERT.)



HIGHWAY FEDERAL AID SHEET  
 PLATE 1-SINGLE PLAN AND PROFILE-FULL DOT  
 \*TELETYPE  
 PRINTED IN U.S.A.

DATE	
BY	
NO. OF SHEETS	
NO. OF SHEETS PLOTTED	
NO. OF SHEETS CHECKED	
NO. OF SHEETS NOT AT THIS CHY.	
NO.	

DATE	
BY	
NO. OF SHEETS	
NO. OF SHEETS PLOTTED	
NO. OF SHEETS CHECKED	
NO. OF SHEETS NOT AT THIS CHY.	
NO.	

