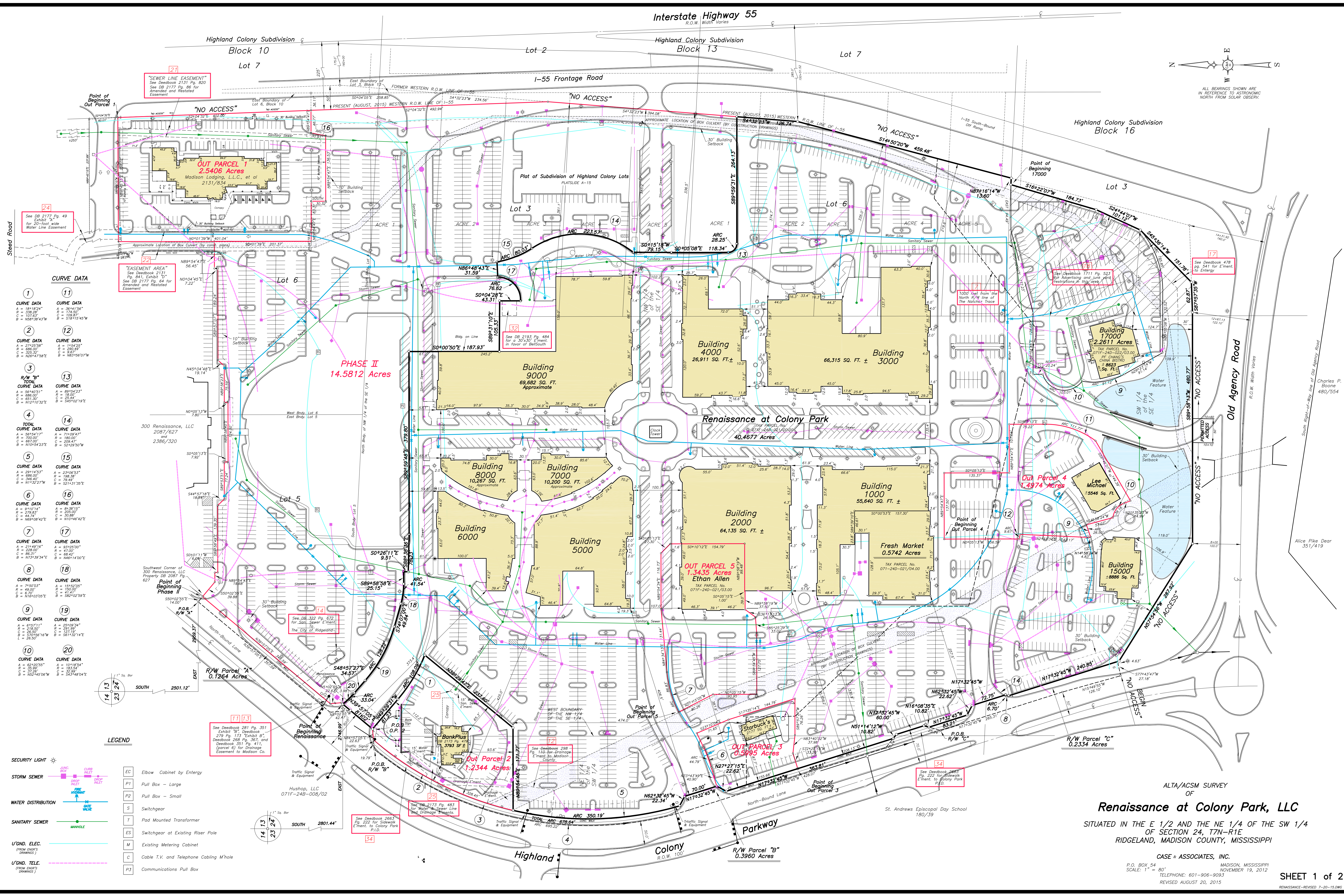


ALL BEARINGS SHOWN ARE IN REFERENCE TO ASTROGNOMIC NORTH FROM SOLAR OBSERV.



"SEWER LINE EASEMENT"  
See Deedbook 2131 Pg. 820  
See DB 2177 Pg. 86 for  
Amended and Restated  
Easement

"EASEMENT AREA"  
See Deedbook 2131,  
Pg. 841, Exhibit "C"  
See DB 2177 Pg. 64 for  
Amended and Restated  
Easement

See Deedbook 281 Pg. 351  
Exhibit "B", Deedbook  
279 Pg. 123, Exhibit "B",  
Deedbook 268 Pg. 367, and  
Deedbook 353 Pg. 411,  
to  
The City of Ridgeland

See Deedbook 281 Pg. 351  
Exhibit "B", Deedbook  
279 Pg. 123, Exhibit "B",  
Deedbook 268 Pg. 367, and  
Deedbook 353 Pg. 411,  
to  
The City of Ridgeland

See Deedbook 2663  
Pg. 222 for Sidewalk  
Easement to Colony Park  
P.I.D.

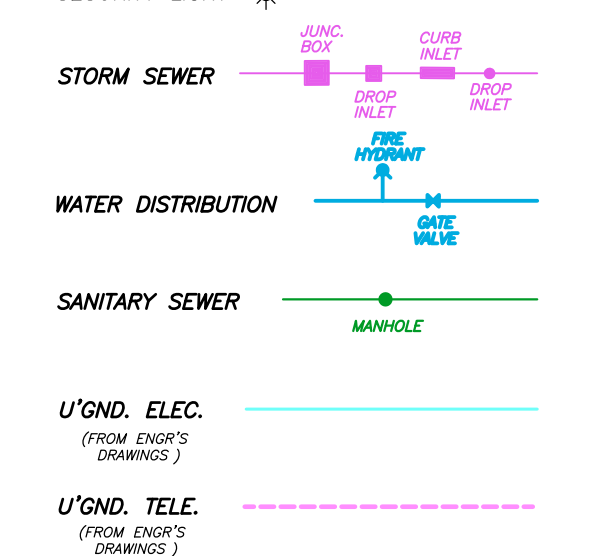
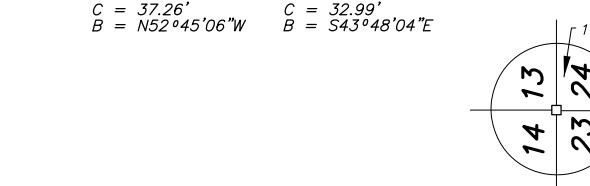
See Deedbook 2663  
Pg. 222 for Sidewalk  
Easement to Colony Park  
P.I.D.

**CURVE DATA**

<b>1</b>	<b>11</b>
<b>CURVE DATA</b>	<b>CURVE DATA</b>
A = 18418.24"	A = 36441.56"
R = 71409.97"	R = 198.38"
C = 109.87"	C = 109.87"
B = 358.38+43.7"	B = 318.15+65.76"
<b>2</b>	<b>12</b>
<b>CURVE DATA</b>	<b>CURVE DATA</b>
A = 27425.58"	A = 296.19"
R = 686.00"	R = 274.41"
C = 323.31"	C = 254.41"
B = 1026.47+38.7"	B = 1081.58+07.7"
<b>3</b>	<b>13</b>
<b>R/W "B" TOTAL CURVE DATA</b>	<b>CURVE DATA</b>
A = 56440.51"	A = 19.00"
R = 686.00"	R = 19.00"
C = 651.30"	C = 19.00"
B = 1101.54+23.2"	B = 543.02+19.9"
<b>4</b>	<b>14</b>
<b>TOTAL CURVE DATA</b>	<b>CURVE DATA</b>
A = 56440.51"	A = 19.00"
R = 686.00"	R = 19.00"
C = 651.30"	C = 19.00"
B = 1101.54+23.2"	B = 543.02+19.9"
<b>5</b>	<b>15</b>
<b>CURVE DATA</b>	<b>CURVE DATA</b>
A = 29114.53"	A = 230.58"
R = 686.00"	R = 198.38"
C = 346.40"	C = 79.49"
B = 1013.32+37.7"	B = 521.43+35.2"
<b>6</b>	<b>16</b>
<b>CURVE DATA</b>	<b>CURVE DATA</b>
A = 9101.14"	A = 64.38"
R = 274.85"	R = 30.88"
C = 44.74"	C = 30.88"
B = 1026.47+42.2"	B = 1026.47+42.2"
<b>7</b>	<b>17</b>
<b>CURVE DATA</b>	<b>CURVE DATA</b>
A = 21449.76"	A = 93425.00"
R = 274.85"	R = 47.00"
C = 86.31"	C = 68.42"
B = 1073.39+34.4"	B = 1461.14+00.2"
<b>8</b>	<b>18</b>
<b>CURVE DATA</b>	<b>CURVE DATA</b>
A = 79403.05"	A = 19425.00"
R = 198.38"	R = 198.38"
C = 141.41"	C = 141.41"
B = 1164.03+05.2"	B = 582.02+59.9"
<b>9</b>	<b>19</b>
<b>CURVE DATA</b>	<b>CURVE DATA</b>
A = 6157.11"	A = 25109.34"
R = 316.00"	R = 291.99"
C = 26.30"	C = 127.19"
B = 1370.64+16.7"	B = 501.32+14.2"
<b>10</b>	<b>20</b>
<b>CURVE DATA</b>	<b>CURVE DATA</b>
A = 6157.11"	A = 25109.34"
R = 316.00"	R = 291.99"
C = 26.30"	C = 127.19"
B = 1370.64+16.7"	B = 501.32+14.2"

**LEGEND**

SECURITY LIGHT	EC	Elbow Cabinet by Entery
STORM SEWER	P1	Pull Box - Large
	P2	Pull Box - Small
WATER DISTRIBUTION	S	Switchgear
SANITARY SEWER	T	Pad Mounted Transformer
	ES	Switchgear at Existing Riser Pole
U'GND. ELEC. (FROM ENGR'S DRAWINGS)	M	Existing Metering Cabinet
U'GND. TELE. (FROM ENGR'S DRAWINGS)	C	Cable T.V. and Telephone Cabling M'hole
	P3	Communications Pull Box



ALTA/ACSM SURVEY  
OF  
**Renaissance at Colony Park, LLC**  
SITUATED IN THE E 1/2 AND THE NE 1/4 OF THE SW 1/4  
OF SECTION 24, 17N-R1E  
RIDGELAND, MADISON COUNTY, MISSISSIPPI

CASE & ASSOCIATES, INC.  
P.O. BOX 54  
MADISON, MISSISSIPPI  
NOVEMBER 19, 2012  
SCALE: 1" = 80'  
TELEPHONE: 601-906-9093  
REVISED AUGUST 20, 2015