

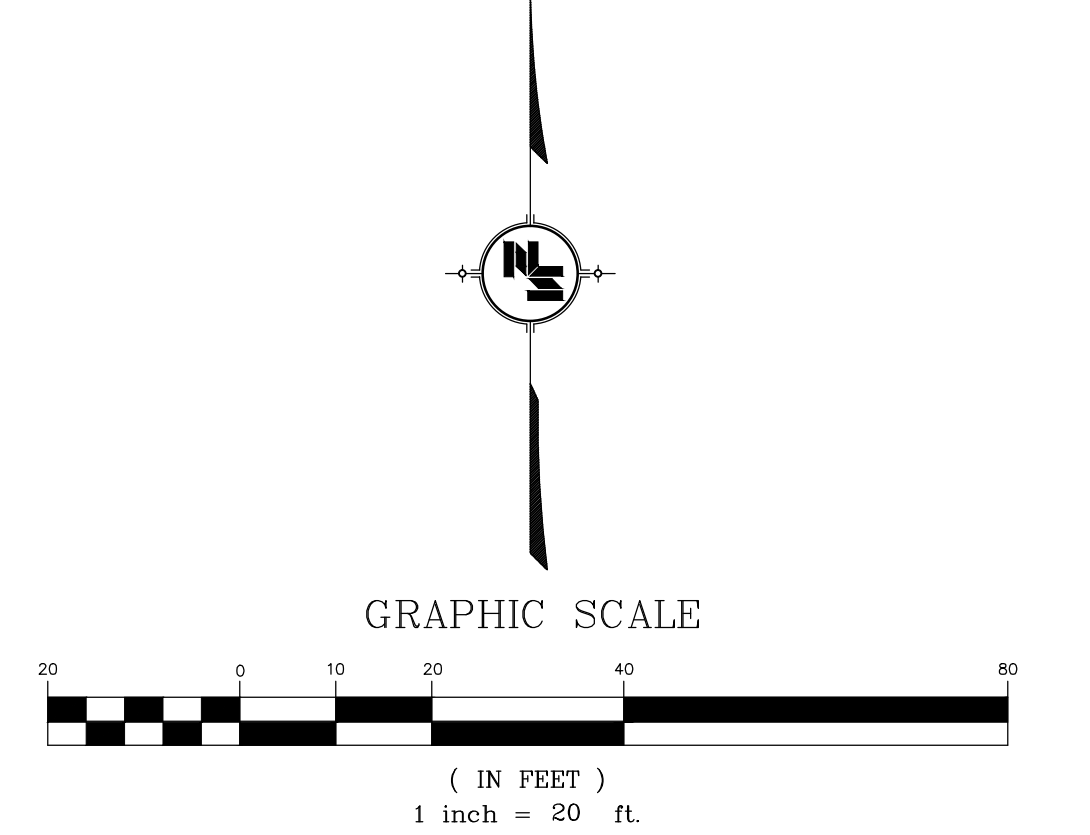
AS-BUILT
04.2020

LOCATION OF COORDINATE POINTS FOR DRAINAGE STRUCTURES
NOT TO SCALE

NOTE:
1. SEE SHEET C07.1 FOR COORDINATE POINT LISTING.

NOTE:
THE DETENTION POND FACILITY ON PURPLE CREEK DESIGNED UNDER THE RENAISSANCE PHASE III PROJECT HAS SUFFICIENT STORAGE TO HANDLE THE RUNOFF FROM THE RENAISSANCE PHASE IV PROJECT. FLOOD DETENTION CALCULATIONS WERE PRESENTED TO THE CITY OF RIDGELAND DURING THE SITE PLAN REVIEW UNDER A TRANSMITTAL FROM AQUA ENGINEERING SERVICE, LTD, DATED JUNE 4, 2018, UNDER THE HEADING "FUEL CENTER FLOOD DETENTION CALCULATIONS".

- LEGEND**
- EXISTING CONTOURS
 - FINISHED CONTOURS
 - PROPOSED GRATE INLET OR JUNCTION BOX AND STORM PIPE
 - PROPOSED CURB INLET AND STORM PIPE
 - EXISTING GRATE INLET AND STORM PIPE
 - EXISTING CURB INLET AND STORM PIPE
 - PROPOSED STANDARD CURB & GUTTER
 - PROPOSED PITCH AWAY CURB
 - PROPOSED TRANSITION FROM STANDARD CURB & GUTTER TO PITCH AWAY CURB
 - WATER QUALITY UNIT
 - CONCRETE HANDICAP RAMP AND TRUNCATED DOMES WILL BE INSTALLED IN FUTURE SIGNAL PROJECT



MATCH LINE - SEE SHEET NO. C07.1

NOTICE TO DRAWING HOLDER
NEEL-SCHAFFER, INC., HERINAFTER REFERRED TO AS THE ENGINEER, HAS PREPARED AND FURNISHED THIS DRAWING TO THE OWNER FOR USE ON THIS PROJECT ONLY. THIS DRAWING SHOULD NOT BE USED ON EXTENSIONS OF THIS PROJECT OR ON ANY OTHER PROJECT. ANY REUSE OF THIS DRAWING, WITHOUT WRITTEN VERIFICATION OR ADAPTION BY THE ENGINEER, SHALL BE AT THE REUSER'S SOLE RISK AND THE REUSER SHALL INDEMNIFY AND HOLD HARMLESS THE ENGINEER FROM ALL CLAIMS, DAMAGES, LOSSES AND EXPENSES, INCLUDING ATTORNEY'S FEES ARISING OUT OF OR RESULTING THEREFROM.

REVISIONS			DRAWING INFORMATION	
NO.	DATE	BY	DESCRIPTION	
1	05/23/19	DMR	REVISED STORM DRAINAGE & TYPES OF STRUCTURES	N-S PROJECT NO.: NS 12665.001
2	10/22/19	DMR	REVISED GRADING	FILENAME: 12665-Ph-IV-Drainage.dwg
				SCALE: 1" = 20'
				SURVEYED BY: MAPTECH, INC.
				DSGN: D.M.R. DATE: 03/21/2019
				DRWN: C.A.J. DATE: 03/21/2019
				CHKD: D.M.R. DATE: 03/21/2019
				QA/QC: --- DATE: ---/---/2019

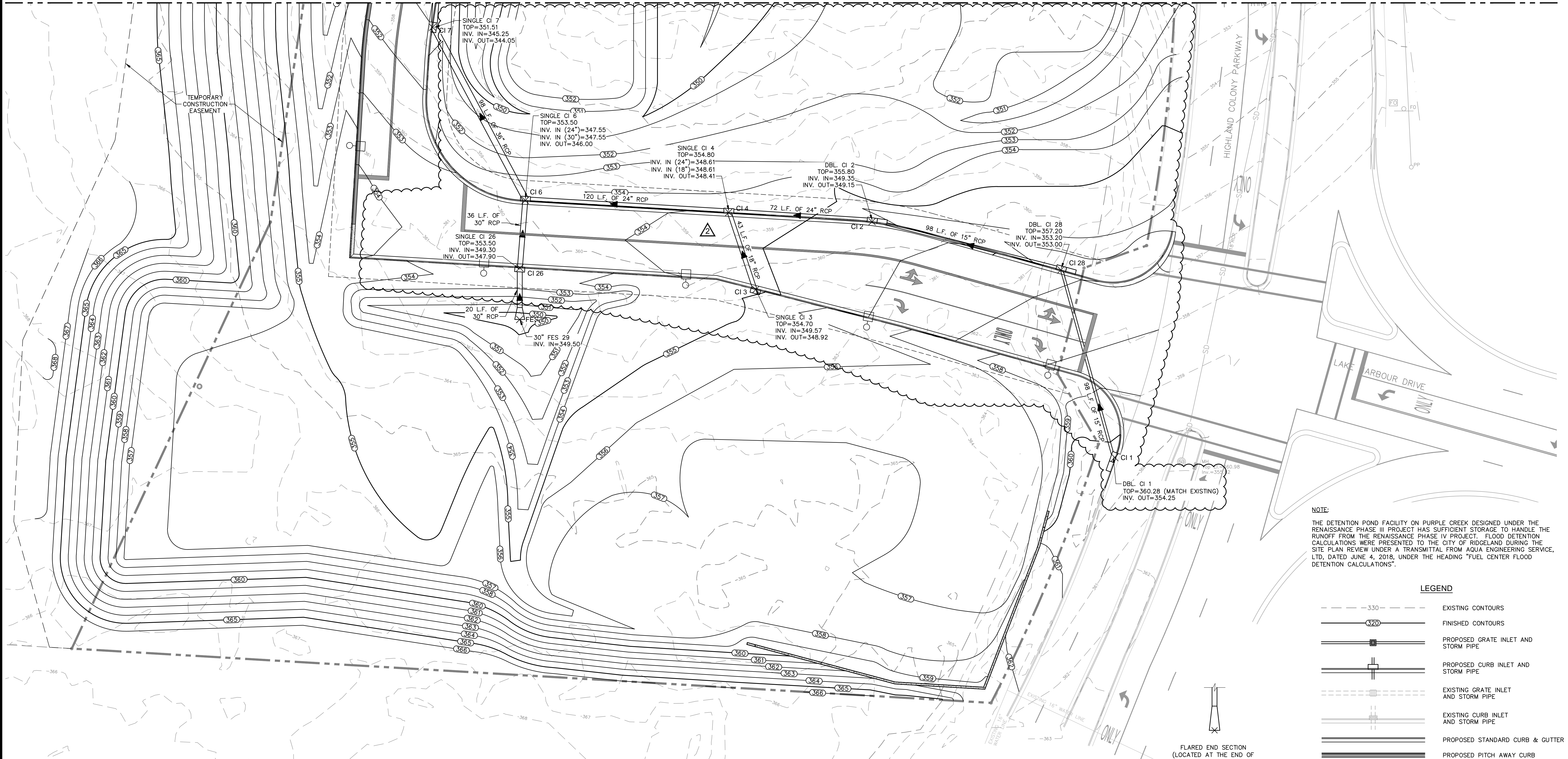
RENAISSANCE PHASE IV
RIDGELAND, MISSISSIPPI

HEMPHILL
RECORD
DRAWING

SITE DRAINAGE PLAN	
WORKING NUMBER:	DRAWING NUMBER:
	C07.0

I:\Projects\CallPlan\12665-Storm Drain\Phase IV\Drainage.dwg, D:\DWG\101022 PM, DWG TO PDF job, ABC111 expanded E1, 6/10/20 s 42.00 (Initials), 11, Check, Issue

MATCH LINE - SEE SHEET NO. C07.0

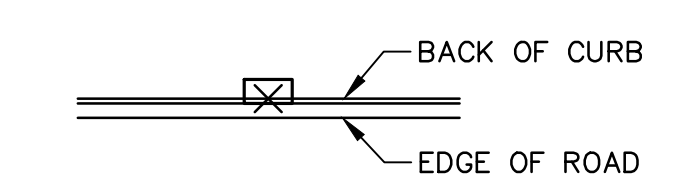


NOTE:
 THE DETENTION POND FACILITY ON PURPLE CREEK DESIGNED UNDER THE RENAISSANCE PHASE III PROJECT HAS SUFFICIENT STORAGE TO HANDLE THE RUNOFF FROM THE RENAISSANCE PHASE IV PROJECT. FLOOD DETENTION CALCULATIONS WERE PRESENTED TO THE CITY OF RIDGELAND DURING THE SITE PLAN REVIEW UNDER A TRANSMITTAL FROM AQUA ENGINEERING SERVICE, LTD, DATED JUNE 4, 2018, UNDER THE HEADING "FUEL CENTER FLOOD DETENTION CALCULATIONS".

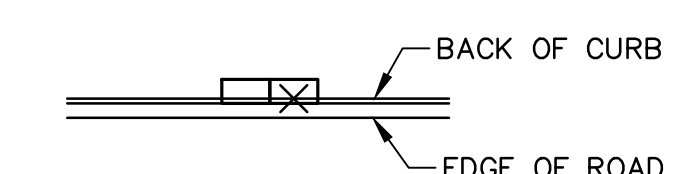
LEGEND

- EXISTING CONTOURS
- FINISHED CONTOURS
- PROPOSED GRATE INLET AND STORM PIPE
- PROPOSED CURB INLET AND STORM PIPE
- EXISTING GRATE INLET AND STORM PIPE
- EXISTING CURB INLET AND STORM PIPE
- PROPOSED STANDARD CURB & GUTTER
- PROPOSED PITCH AWAY CURB
- PROPOSED TRANSITION FROM STANDARD CURB & GUTTER TO PITCH AWAY CURB

FLARED END SECTION
 (LOCATED AT THE END OF
 FLARED END SECTION IN LINE
 WITH THE CENTERLINE OF THE
 STORM DRAINAGE PIPE.)

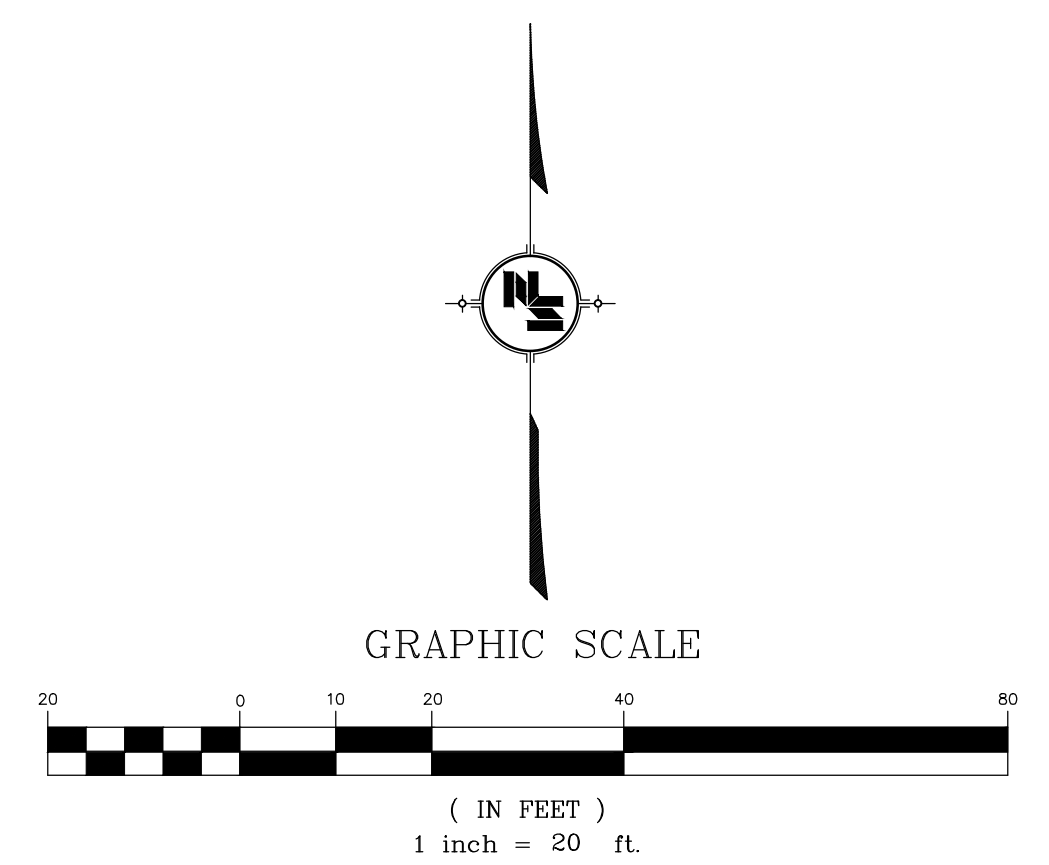


SINGLE CURB INLET (LOCATED AT THE CENTER OF THE INLET AND AT THE PROJECTED BACK OF CURB)
 (SEE CURB INLET DETAILS ON DRAWING NOS. C16.0 OR C16.1, UNLESS OTHERWISE NOTED.)



DOUBLE CURB INLET (LOCATED AT THE CENTER OF THE INLET AND AT THE PROJECTED BACK OF CURB)
 (SEE CURB INLET DETAILS ON DRAWING NOS. C16.0 OR C16.2, UNLESS OTHERWISE NOTED.)

LOCATION OF COORDINATE POINTS FOR DRAINAGE STRUCTURES
 NOT TO SCALE



STORM DRAINAGE STRUCTURES COORDINATE POINT LISTING				
POINT #	NORTHING	EASTING	NOMINAL COVER SIZE	STRUCTURE
CI 1	1062166.90	2353359.76	DOUBLE 5'	DOUBLE SS-2 INLET OR APPROVED EQUAL
CI 2	1062285.36	2353237.76	DOUBLE 5'	5' CURB INLET (DEWS-DF-60) *
CI 3	1062251.26	2353179.36	SINGLE 5'	5' CURB INLET (DEWS-DF-60) *
CI 4	1062290.01	2353165.76	SINGLE 5'	5' CURB INLET (DEWS-DF-60) *
CI 6	1062296.05	2353063.52	SINGLE 5'	5' CURB INLET (DEWS-DF-60) *
CI 7	1062383.01	2353016.91	SINGLE 5'	5' CURB INLET (DEWS-DF-60) *
CI 8	1062449.70	2353021.65	SINGLE 5'	5' CURB INLET (DEWS-DF-60) *
JB 9	1062501.95	2353031.65		JUNCTION BOX (SEE DETAIL DWG. NO. C16.2)
CI 10	1062714.20	2353053.65	SINGLE 5'	5' CURB INLET (DEWS-DF-60) *
CI 11	1062754.20	2353097.16	DOUBLE 5'	5' CURB INLET (DEWS-DF-60) *
CI 13	1062754.20	2353276.25	SINGLE 5'	5' CURB INLET (DEWS-DF-60) *
CI 14	1062761.59	2353368.40	DOUBLE 5'	5' CURB INLET (DEWS-DF-60) *
CI 15	1062664.20	2353284.41	SINGLE 5'	SINGLE SS-2 INLET OR APPROVED EQUAL
JB 16	1062627.79	2353289.91		JUNCTION BOX (SEE DETAIL DWG. NO. C16.2)

STORM DRAINAGE STRUCTURES COORDINATE POINT LISTING				
POINT #	NORTHING	EASTING	NOMINAL COVER SIZE	STRUCTURE
CI 17	1062700.20	2353276.24	SINGLE 5'	SINGLE SS-2 INLET OR APPROVED EQUAL
CI 19	1062700.20	2353097.16	TRIPLE 5'	TRIPLE SS-2 INLET OR APPROVED EQUAL
JB 20	1062536.20	2353289.91		JUNCTION BOX (SEE DETAIL DWG. NO. C16.2)
JB 21	1062497.83	2353364.41		JUNCTION BOX (SEE DETAIL DWG. NO. C16.2)
CI 22	1062627.79	2353356.29	DOUBLE 5'	5' CURB INLET (DEWS-DF-60) *
CI 23	1062650.50	2353401.58	DOUBLE 5'	DOUBLE SS-2 INLET OR APPROVED EQUAL
FES 25	1062491.78	2353044.01		24" PIPE AND FES - MDOOT DETAILS (SEE DETAIL DWG. NO. C16.4)
CI 26	1062262.15	2353060.77	SINGLE 5'	5' CURB INLET (DEWS-DF-60) *
CI 28	1062261.12	2353332.67	DOUBLE 5'	5' CURB INLET (DEWS-DF-60) *
FES 29	1062236.23	2353060.72		30" PIPE AND FES - MDOOT DETAILS (SEE DETAIL DWG. NO. C16.4)
CI 30	1062664.20	2353107.12	TRIPLE 5'	TRIPLE SS-2 INLET OR APPROVED EQUAL
CI 31	1062714.20	2353097.16	SINGLE 5'	5' CURB INLET (DEWS-DF-60) *
CI 32	1062714.20	2353276.24	SINGLE 5'	5' CURB INLET (DEWS-DF-60) *
CI 33	1062813.40	2353391.41	SINGLE 5'	SINGLE SS-2 INLET OR APPROVED EQUAL

STORM DRAINAGE STRUCTURES COORDINATE POINT LISTING				
POINT #	NORTHING	EASTING	NOMINAL COVER SIZE	STRUCTURE
CI 34	1062818.44	2353479.75	SINGLE 5'	5' CURB INLET (DEWS-DF-60) *
FES 35	1062485.49	2353358.05		15" PIPE AND FES - MDOOT DETAILS (SEE DETAIL DWG. NO. C16.4)
JB 36	1062799.65	2353355.69		JUNCTION BOX (SEE DETAIL DWG. NO. C16.2)

* SS-2 INLETS CAN BE USED IN LIEU OF THE DEWS-DF-60 INLETS.

AS-BUILT
04.2020

NOTICE TO DRAWING HOLDER
 NEEL-SCHAFFER, INC., HERINAFTER REFERRED TO AS THE ENGINEER, HAS PREPARED AND FURNISHED THIS DRAWING TO THE OWNER FOR USE ON THIS PROJECT ONLY. THIS DRAWING SHOULD NOT BE USED ON EXTENSIONS OF THIS PROJECT OR ON ANY OTHER PROJECT. ANY REUSE OF THIS DRAWING, WITHOUT WRITTEN VERIFICATION OR ADAPTATION BY THE ENGINEER, SHALL BE AT THE REUSER'S SOLE RISK AND THE REUSER SHALL INDEMNIFY AND HOLD HARMLESS THE ENGINEER FROM ALL CLAIMS, DAMAGES, LOSSES AND EXPENSES, INCLUDING ATTORNEY'S FEES ARISING OUT OF OR RESULTING THEREFROM.

REVISIONS				DRAWING INFORMATION	
NO.	DATE	BY	DESCRIPTION	N-S PROJECT NO.:	FILENAME:
1	04/25/19	DMR	REVISED TYPE OF STRUCTURES	NS 1265.001	12665-FH-IV-Drainage.dwg
2	10/17/19	DMR	REVISED STORM DRAINAGE AND GRADING	SCALE: 1" = 20'	

RENAISSANCE PHASE IV
RIDGELAND, MISSISSIPPI

SURVEYED BY: MAPTECH, INC.
 DSGN: D.M.R. DATE: 03/21/2019
 DRWN: C.A.J. DATE: 03/21/2019
 CHKD: D.M.R. DATE: 03/21/2019
 QA/QC: --- DATE: ---/---/2019

HEMPHILL
RECORD
DRAWING

SITE DRAINAGE PLAN

WORKING NUMBER: DRAWING NUMBER:
C07.1

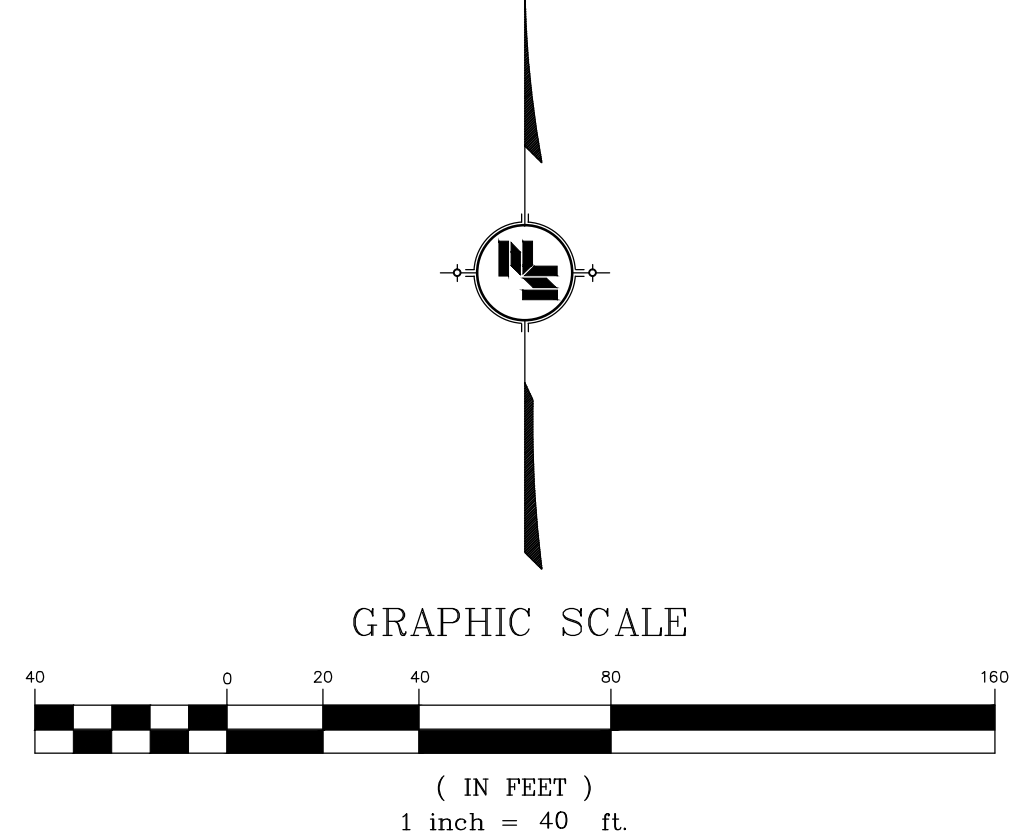
I:\Projects\CallPlan\12665-Storm Drain\Drawings\Construction\Phase-IV\12665-FH-IV-Drainage.dwg - Drawn: 2/28/2020 4:10:01 PM, DWG by: JDFP, pcd, ABC (H) updated: E1, 6/10/2019 4:42:00 (Initials), J.L. Check, Jansen

AS-BUILT FOR WATER AND SEWER EXTENSION FOR WENDY'S 08.2020

AS-BUILT 04.2020

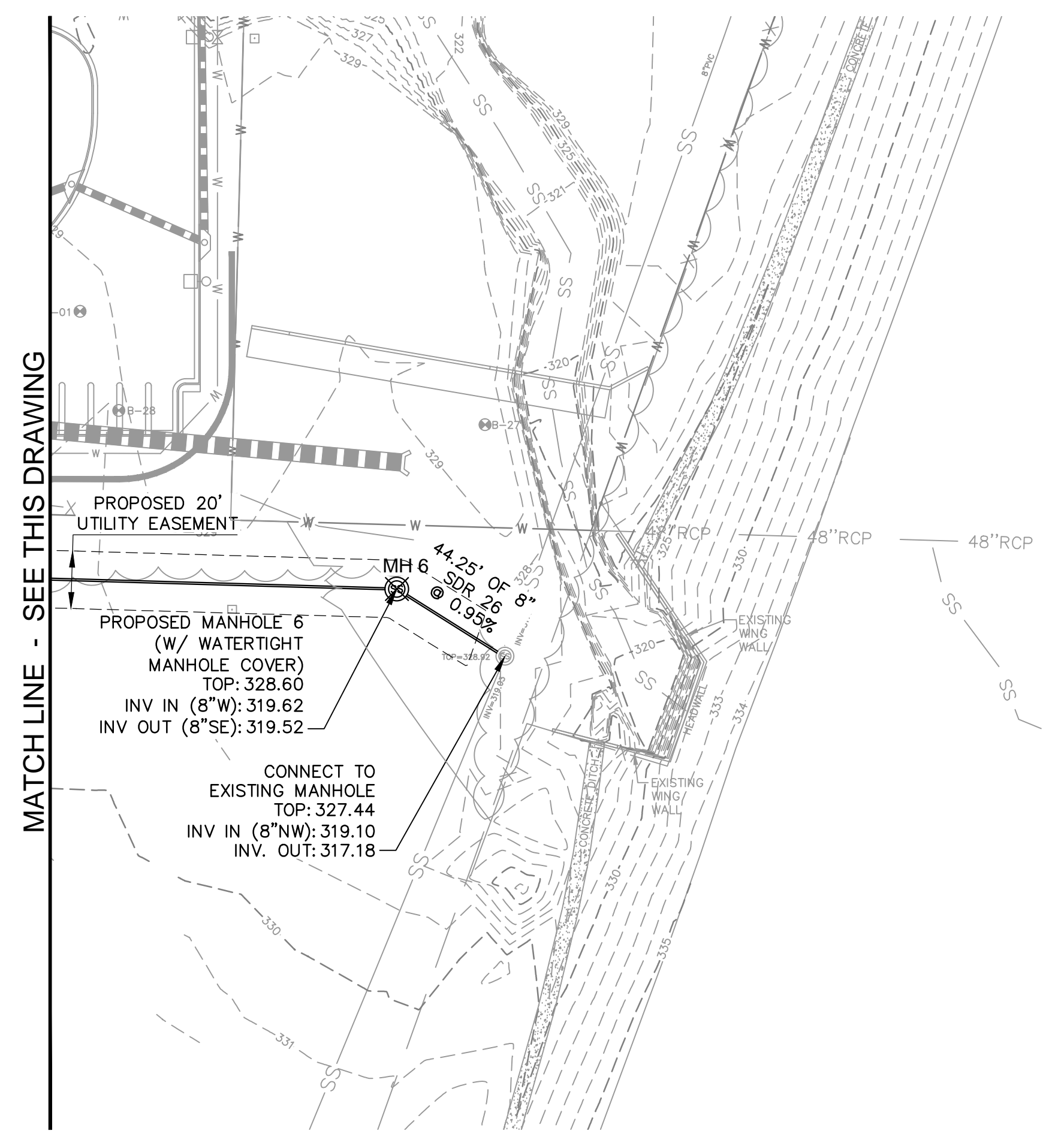
MANHOLE COORDINATE POINT LISTING

POINT #	NORTHING	EASTING
MH 1	1062193.10	2353346.69
MH 2	1062492.05	2353386.72
MH 3	1062708.25	2353380.25
MH 4	1062706.97	2353707.76
MH 5	1062694.69	2354076.91
MH 6	1062683.43	2354469.99
MH 7	1062708.25	2353260.62
MH 8	1062256.94	2353038.88



LEGEND

	EXISTING CONTOURS
	FINISHED CONTOURS
	PROPOSED SANITARY SEWER & MANHOLE
	PROPOSED SANITARY SEWER CLEANOUT
	PROPOSED WATER LINE
	PROPOSED GATE VALVE
	PROPOSED FIRE HYDRANT ASSEMBLY
	PROPOSED TEE
	PROPOSED RESTRAINT PLUG
	PROPOSED WATER METER
	PROPOSED 24" STEEL CASING WITH 12" C900 WATER LINE
	EXISTING WATER LINE
	EXISTING GATE VALVE
	PROPOSED 16" STEEL CASING WITH 8" SDR SEWER PIPE
	PROPOSED UNDERGROUND POWER
	PROPOSED COMMUNICATION CONDUITS
	PROPOSED COMMUNICATIONS PULL BOX



NOTICE TO DRAWING HOLDER
NEEL-SCHAFFER, INC., HERINAFTER REFERRED TO AS THE ENGINEER, HAS PREPARED AND FURNISHED THIS DRAWING TO THE OWNER FOR USE ON THIS PROJECT ONLY. THIS DRAWING SHOULD NOT BE USED ON EXTENSIONS OF THIS PROJECT OR ON ANY OTHER PROJECT. ANY REUSE OF THIS DRAWING, WITHOUT WRITTEN VERIFICATION OR ADAPTION BY THE ENGINEER, SHALL BE AT THE REUSER'S SOLE RISK AND THE REUSER SHALL INDEMNIFY AND HOLD HARMLESS THE ENGINEER FROM ALL CLAIMS, DAMAGES, LOSSES AND EXPENSES, INCLUDING ATTORNEY'S FEES ARISING OUT OF OR RESULTING THEREFROM.

REVISIONS			DRAWING INFORMATION	
NO.	DATE	BY	DESCRIPTION	N-S PROJECT NO.: NS 12665.001
1	04/25/19	DMR	UTILITY ALIGNMENT CHANGE & REVISED PIPE MATERIAL	FILENAME: 12665-Ph-IV-Utility.dwg
2	07/23/19	DMR	WATER LINE ALIGNMENT CHANGE	SCALE: 1" = 40'
3	09/23/19	DMR	REVISED SANITARY SEWER ALIGNMENT, RE-ISSUE SHEET	SURVEYED BY: MAPTECH, INC.
4	10/22/19	DMR	REVISED SANITARY SEWER AND WATER	DSGN: D.M.R. DATE: 03/21/2019
5	12/05/19	DMR	REVISED SANITARY SEWER AND RELOCATED MANHOLE #8	DRWN: C.A.J. DATE: 03/21/2019
6	04/21/20	DMR	ADD FIRE HYDRANT	CHKD: D.M.R. DATE: 03/21/2019
				QA/QC: --- DATE: ---/---/2019

**RENAISSANCE PHASE IV
RIDGELAND, MISSISSIPPI**

**HEMPHILL
RECORD
DRAWING**

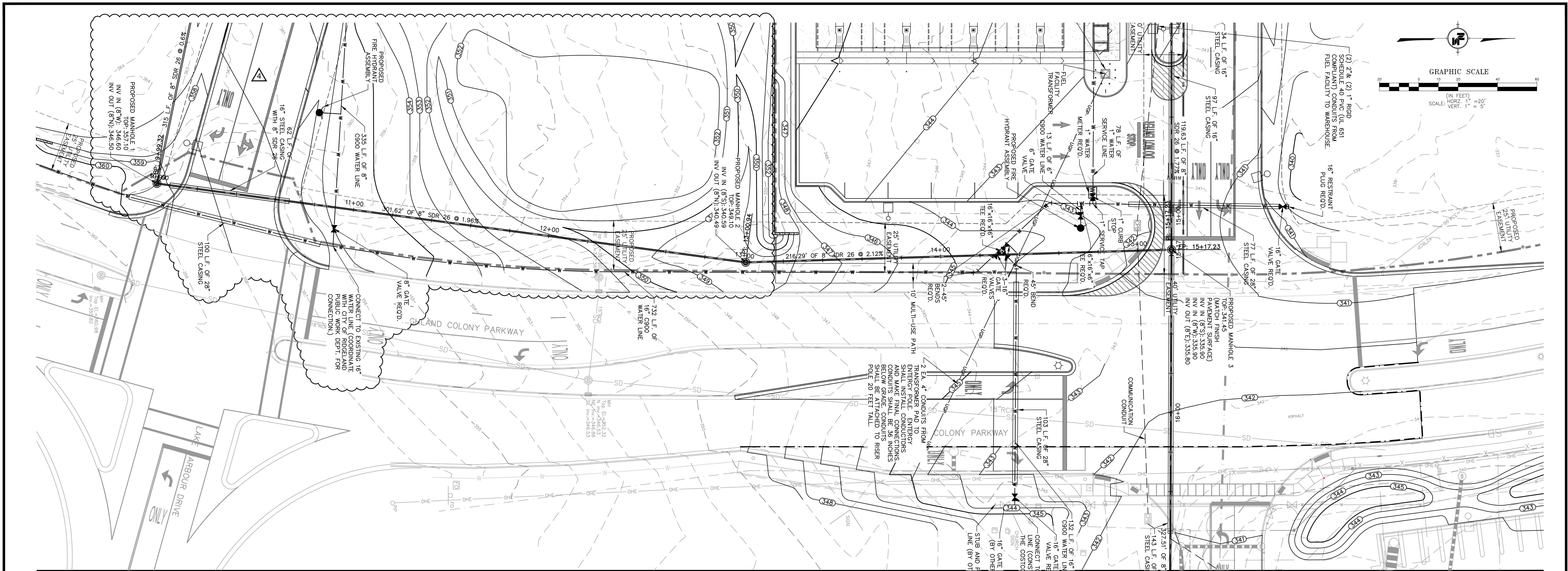
SITE UTILITY PLAN

WORKING NUMBER:	DRAWING NUMBER:
	C09.0

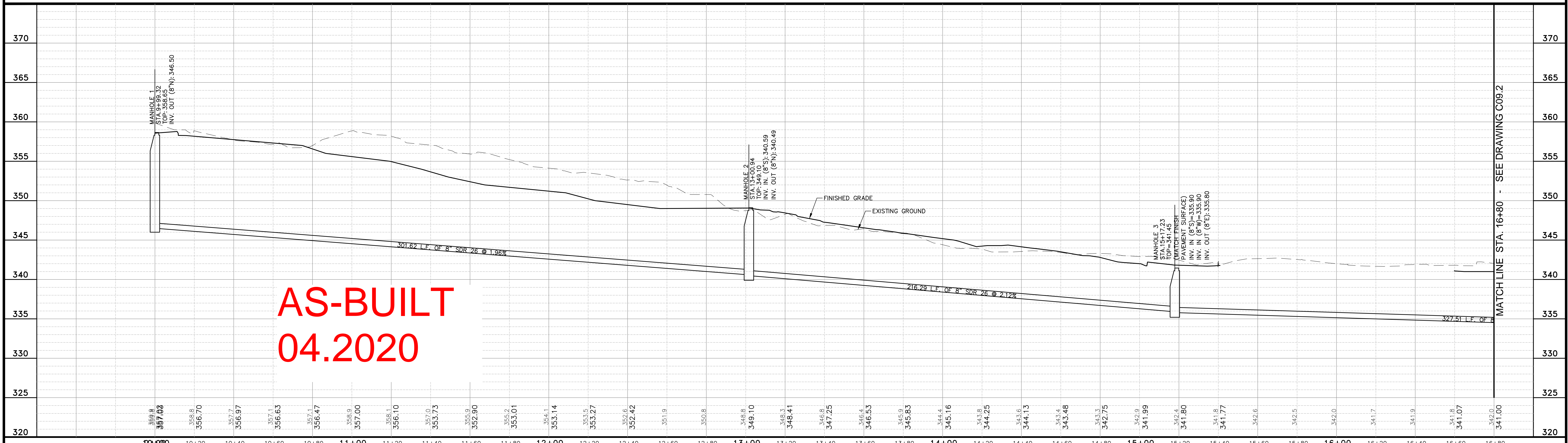
I:\Projects\CallPkg\22005-Santa-Diego\MapPoint\Draw\ConstructionPlans\Phase IV\12665-Ph-IV-Utility.dwg, 04/21/2020 11:11:58 PM, DWG by: DMR, PLOT by: DMR, PLOT DATE: 04/21/2020 11:11:58 AM, PLOT SCALE: 1" = 40.00 Feet, PLOT BY: DMR, PLOT DATE: 04/21/2020 11:11:58 AM

MATCH LINE - SEE THIS DRAWING

MATCH LINE - SEE THIS DRAWING



MATCH LINE STA. 16+80 - SEE DRAWING C09.2



**AS-BUILT
04.2020**

MATCH LINE STA. 16+80 - SEE DRAWING C09.2

NOTICE TO DRAWING HOLDER
 NEEL-SCHAFFER, INC., HERINAFTER REFERRED TO AS THE ENGINEER, HAS PREPARED AND FURNISHED THIS DRAWING TO THE OWNER FOR USE ON THIS PROJECT ONLY. THIS DRAWING SHOULD NOT BE USED ON EXTENSIONS OF THIS PROJECT OR ON ANY OTHER PROJECT. ANY REUSE OF THIS DRAWING, WITHOUT WRITTEN VERIFICATION OR ADAPTATION BY THE ENGINEER, SHALL BE AT THE REUSER'S SOLE RISK AND THE REUSER SHALL INDEMNIFY AND HOLD HARMLESS THE ENGINEER FROM ALL CLAIMS, DAMAGES, LOSSES AND EXPENSES, INCLUDING ATTORNEY'S FEES ARISING OUT OF OR RESULTING THEREFROM.

REVISIONS		DRAWING INFORMATION	
NO.	DATE	BY	DESCRIPTION
1	04/25/19	DMR	REVISED PIPE MATERIAL & ADDED PROFILE TEXT
2	07/23/19	DMR	WATER LINE ALIGNMENT CHANGE
3	09/23/19	DMR	REVISED SANITARY SEWER ALIGNMENT, RE-ISSUE SHEET
4	10/22/19	DMR	ADD OUT PARCEL WATER & SEWER

DRAWING INFORMATION	
N-S PROJECT NO.:	NS 12665.001
FILENAME:	12665-Ph-IV-SS-PNP.dwg
SCALE:	1" = 20'
SURVEYED BY:	MAPTECH, INC.
DSGN:	D.M.R. DATE: 03/21/2019
DRWN:	G.B.B. DATE: 03/21/2019
CHKD:	D.M.R. DATE: 03/21/2019
QA/QC:	--- DATE: ---/---/2019

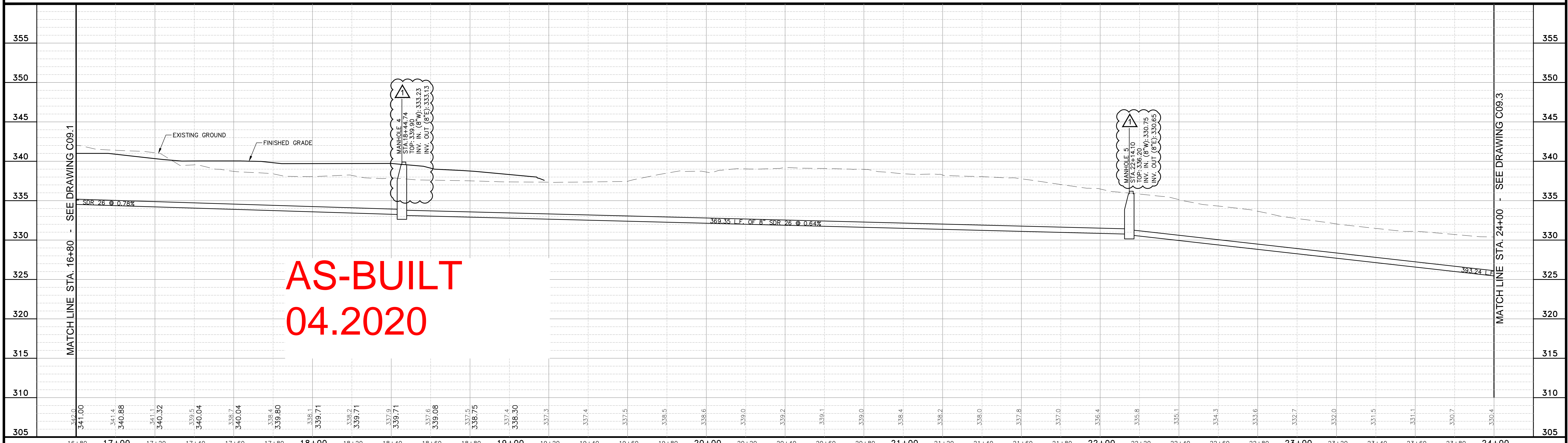
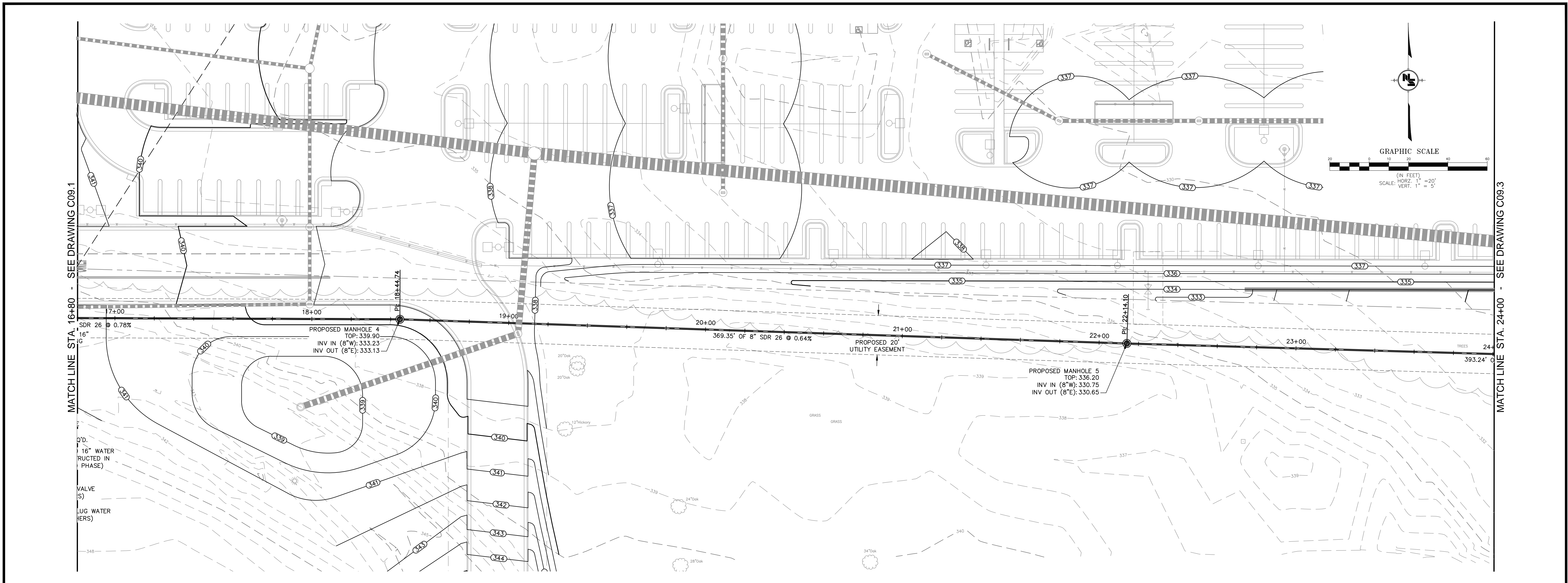
RENAISSANCE PHASE IV
RIDGELAND, MISSISSIPPI

**HEMPHILL
RECORD
DRAWING**

SANITARY SEWER
PLAN AND PROFILE
STA. 10+00 TO 16+80

WORKING NUMBER: SS-PNP-1
DRAWING NUMBER: C09.1

I:\Projects\CallPlan\2205-Storm Drain\MapTech\Drawings\Construction\Plan-Phase IV\12665-Ph-IV-SS-PNP.dwg, 17/06/2020 11:55 PM, DWG TO PDF, DWG TO PDF, ARCH, 11, Chuck Adams



AS-BUILT
04.2020

NOTICE TO DRAWING HOLDER
NEEL-SCHAFFER, INC., HERINAFTER REFERRED TO AS THE ENGINEER, HAS PREPARED AND FURNISHED THIS DRAWING TO THE OWNER FOR USE ON THIS PROJECT ONLY. THIS DRAWING SHOULD NOT BE USED ON EXTENSIONS OF THIS PROJECT OR ON ANY OTHER PROJECT. ANY REUSE OF THIS DRAWING, WITHOUT WRITTEN VERIFICATION OR ADAPTATION BY THE ENGINEER, SHALL BE AT THE REUSER'S SOLE RISK AND THE REUSER SHALL INDEMNIFY AND HOLD HARMLESS THE ENGINEER FROM ALL CLAIMS, DAMAGES, LOSSES AND EXPENSES, INCLUDING ATTORNEY'S FEES ARISING OUT OF OR RESULTING THEREFROM.

REVISIONS				DRAWING INFORMATION	
NO.	DATE	BY	DESCRIPTION	N-S PROJECT NO.:	FILENAME:
1	04/25/19	DMR	ADDED PROFILE TEXT	NS 12665.001	12665-Ph-IV-SS-PNP.dwg
				SCALE: 1" = 20'	
				SURVEYED BY: MAPTECH, INC.	
				DSGN: D.M.R.	DATE: 03/21/2019
				DRWN: G.B.B.	DATE: 03/21/2019
				CHKD: D.M.R.	DATE: 03/21/2019
				QA/QC: ---	DATE: / / 2019

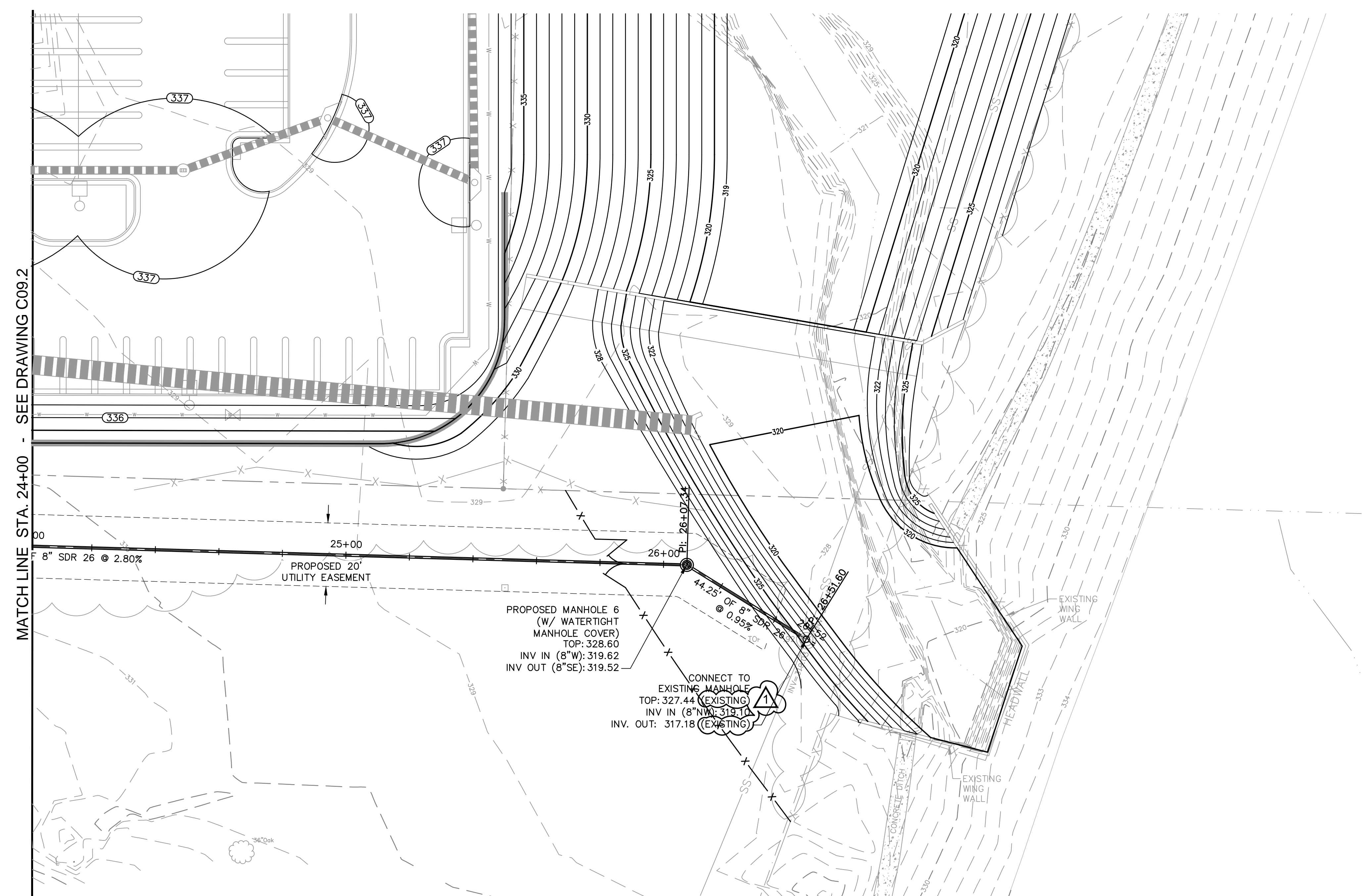
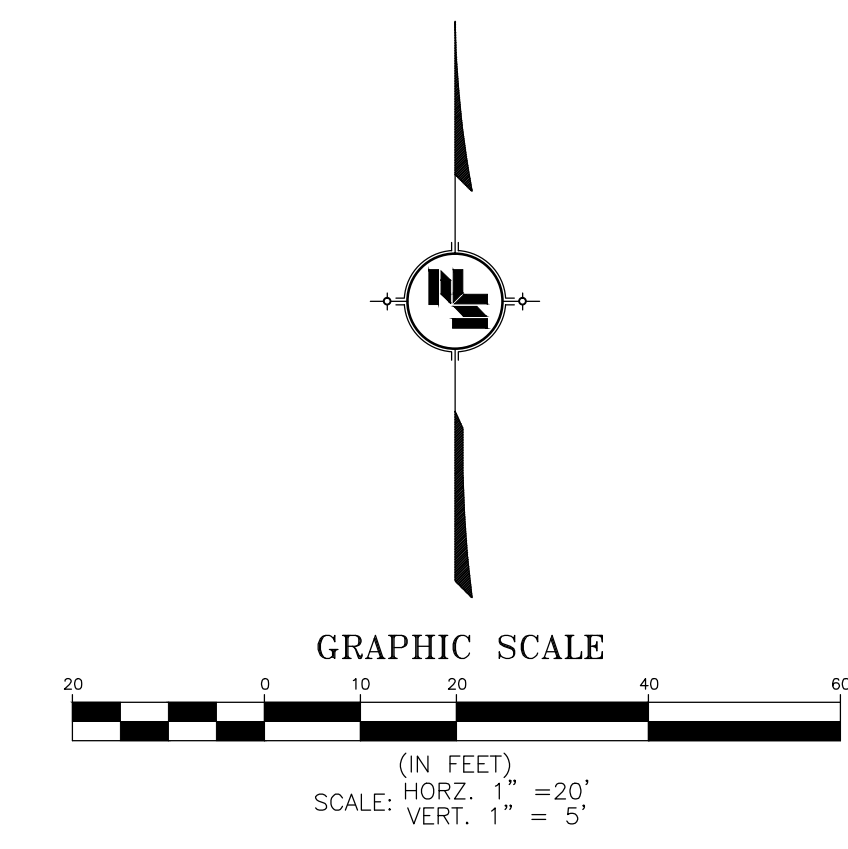
RENAISSANCE PHASE IV
RIDGELAND, MISSISSIPPI

HEMPHILL
RECORD
DRAWING

SANITARY SEWER
PLAN AND PROFILE
STA. 16+80 TO 24+00

WORKING NUMBER: SS-PNP-2	DRAWING NUMBER: C09.2
------------------------------------	---------------------------------

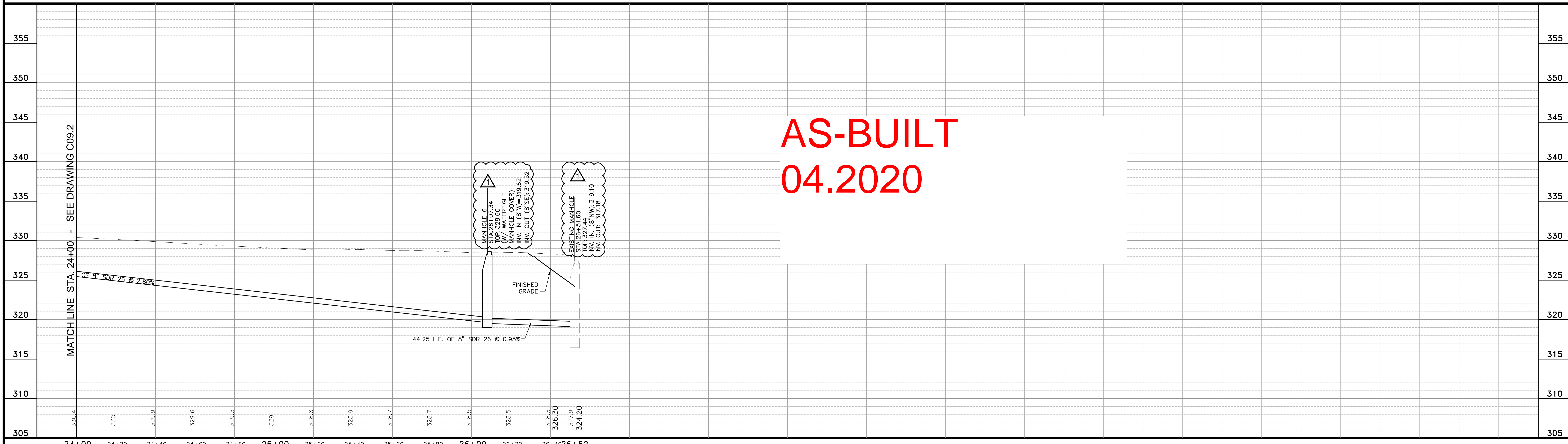
I:\Projects\CallPlan\12665-Sanitary Sewer\Drawings\Construction\Phase IV\12665-Ph-IV-SS-PNP.dwg, SS-PNP-2, 7/8/2020 11:12:12 PM, DWG, To: PBP, gcl, ARCH, updated: E1 (03/09/2019), 11, Check, Admin



MATCH LINE STA. 24+00 - SEE DRAWING C09.2

MATCH LINE STA. 24+00 - SEE DRAWING C09.2

AS-BUILT
04.2020



NOTICE TO DRAWING HOLDER
NEEL-SCHAFFER, INC., HERINAFTER REFERRED TO AS THE ENGINEER, HAS PREPARED AND FURNISHED THIS DRAWING TO THE OWNER FOR USE ON THIS PROJECT ONLY. THIS DRAWING SHOULD NOT BE USED ON EXTENSIONS OF THIS PROJECT OR ON ANY OTHER PROJECT. ANY REUSE OF THIS DRAWING, WITHOUT WRITTEN VERIFICATION OR ADAPTION BY THE ENGINEER, SHALL BE AT THE REUSER'S SOLE RISK AND THE REUSER SHALL INDEMNIFY AND HOLD HARMLESS THE ENGINEER FROM ALL CLAIMS, DAMAGES, LOSSES AND EXPENSES, INCLUDING ATTORNEY'S FEES ARISING OUT OF OR RESULTING THEREFROM.

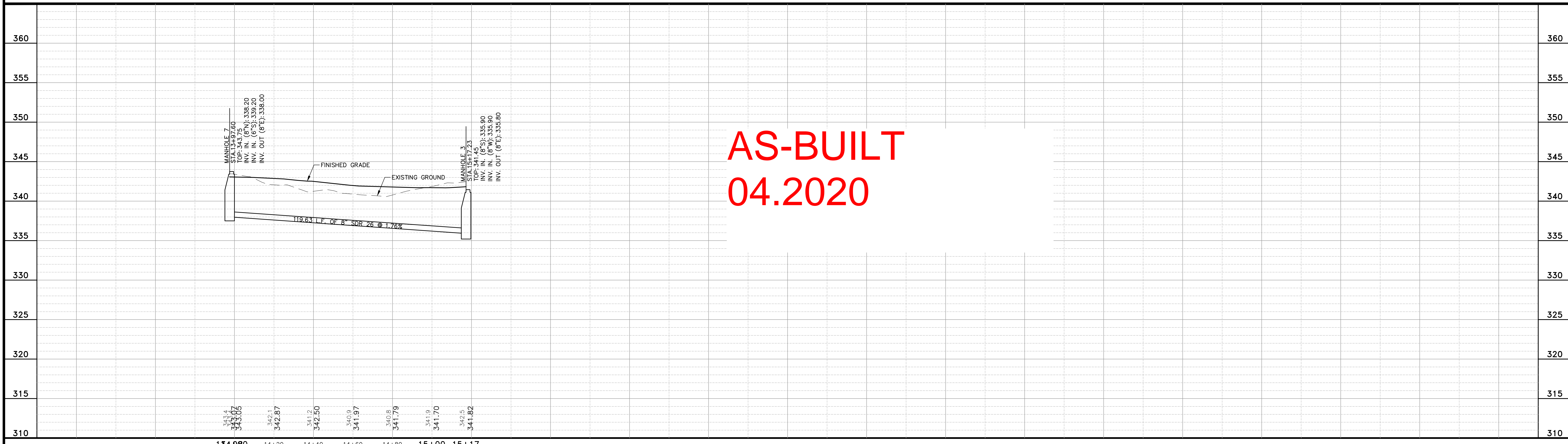
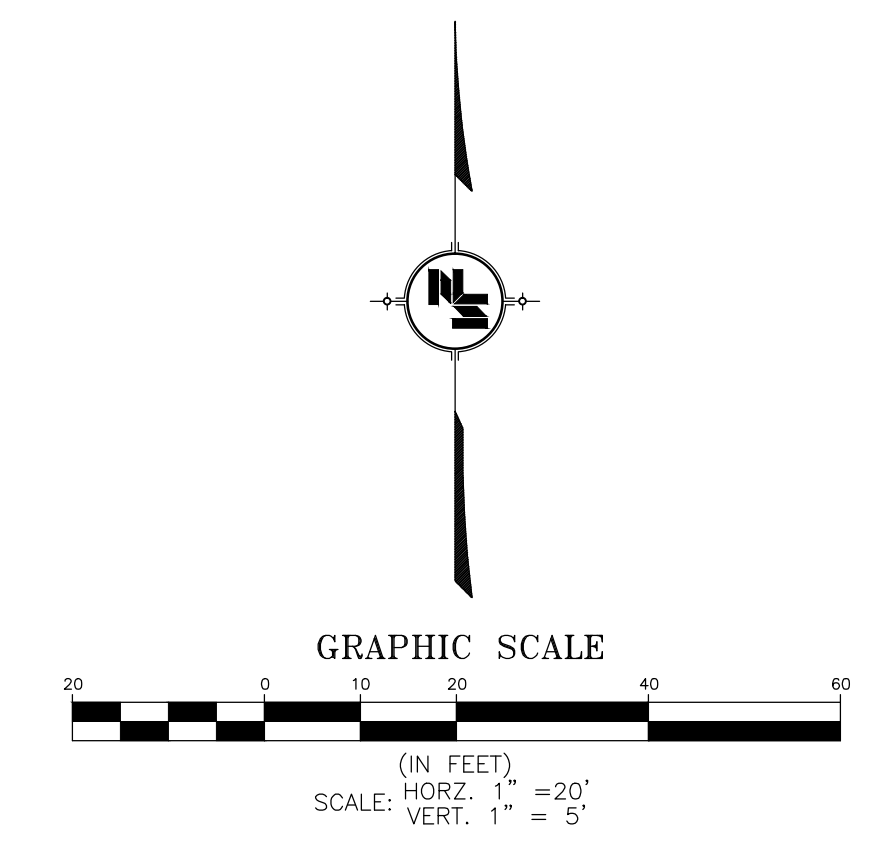
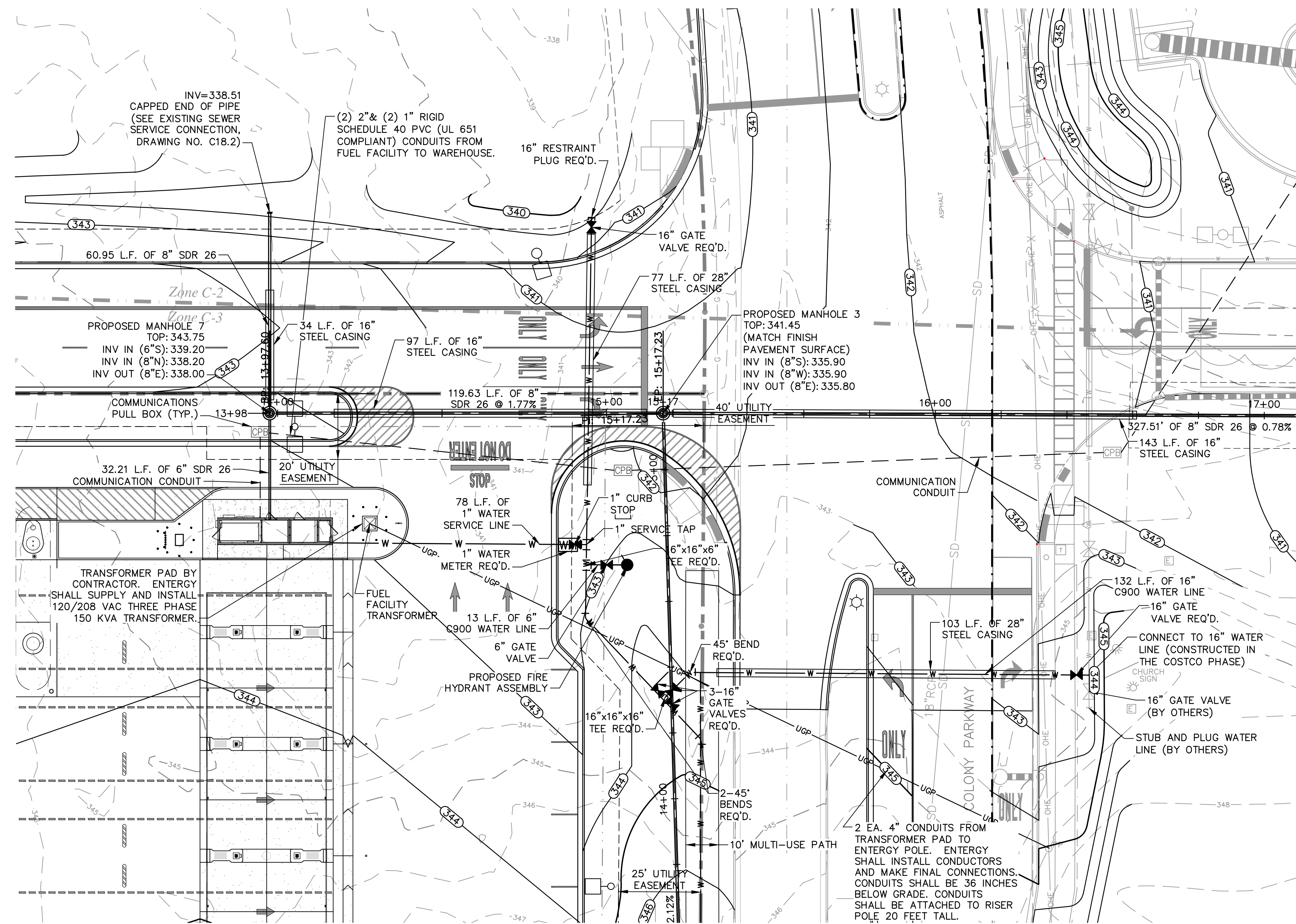
REVISIONS				DRAWING INFORMATION	
NO.	DATE	BY	DESCRIPTION		
1	04/25/19	DMR	ADDED PROFILE TEXT	N-S PROJECT NO.: NS 12665.001	
				FILENAME: 12665-PH-IV-SS-PNP.dwg	
				SCALE: 1" = 20'	
				SURVEYED BY: MAPTECH, INC.	
				DSGN: D.M.R. DATE: 03/21/2019	
				DRWN: G.B.B. DATE: 03/21/2019	
				CHKD: D.M.R. DATE: 03/21/2019	
				QA/QC: --- DATE: ---/---/2019	

RENAISSANCE PHASE IV
RIDGELAND, MISSISSIPPI

HEMPHILL
RECORD
DRAWING

SANITARY SEWER PLAN AND PROFILE STA. 24+00 TO 26+52	
WORKING NUMBER: SS-PNP-3	DRAWING NUMBER: C09.3

I:\Projects\CallPlan\2205-Santa-Dug-Post\Draw-Construction\Plan-Phase IV\12665-PH-IV-SS-PNP.dwg - Construction\Plan-Phase IV\12665-PH-IV-SS-PNP.dwg, SEE PNP.dwg, SEE PNP.dwg, SEE PNP.dwg, ARCH, updated: 01/09/19 10:42:00 AM, 11, Chuck Adams



**AS-BUILT
04.2020**

NOTICE TO DRAWING HOLDER
NEEL-SCHAFFER, INC., HERINAFTER REFERRED TO AS THE ENGINEER, HAS PREPARED AND FURNISHED THIS DRAWING TO THE OWNER FOR USE ON THIS PROJECT ONLY. THIS DRAWING SHOULD NOT BE USED ON EXTENSIONS OF THIS PROJECT OR ON ANY OTHER PROJECT. ANY REUSE OF THIS DRAWING, WITHOUT WRITTEN VERIFICATION OR ADAPTION BY THE ENGINEER, SHALL BE AT THE REUSER'S SOLE RISK AND THE REUSER SHALL INDEMNIFY AND HOLD HARMLESS THE ENGINEER FROM ALL CLAIMS, DAMAGES, LOSSES AND EXPENSES, INCLUDING ATTORNEY'S FEES ARISING OUT OF OR RESULTING THEREFROM.

REVISIONS				DRAWING INFORMATION	
NO.	DATE	BY	DESCRIPTION	N-S PROJECT NO.:	FILENAME:
1	04/25/19	DMR	ADDED PROFILE TEXT	NS 12665.001	12665-Ph-IV-SS-PNP.dwg
2	09/23/19	DMR	REVISED SANITARY SEWER ALIGNMENT, RE-ISSUE SHEET	SCALE: 1" = 20'	

DRAWING INFORMATION			
SURVEYED BY:	MAPTECH, INC.	DSGN:	D.M.R. DATE: 03/21/2019
DRWN:	G.B.B. DATE: 03/21/2019	CHKD:	D.M.R. DATE: 03/21/2019
QA/QC:	---	DATE:	---/---/2019

**HEMPHILL
RECORD
DRAWING**

**SANITARY SEWER
PLAN AND PROFILE
STA. 13+98 TO 15+16**

WORKING NUMBER: **SS-PNP-4**
DRAWING NUMBER: **C09.4**

I:\Projects\CallPlan\22665-Sanitary Sewer\Drawings\ConstructionPlans\Phase IV\12665-Ph-IV-SS-PNP.dwg, 7/26/2020 11:24:43 AM, DWG, To: RFP, Project: ARCH, eprint: E1, (30.00 x 42.00 Inches), 11, Check, Admin