

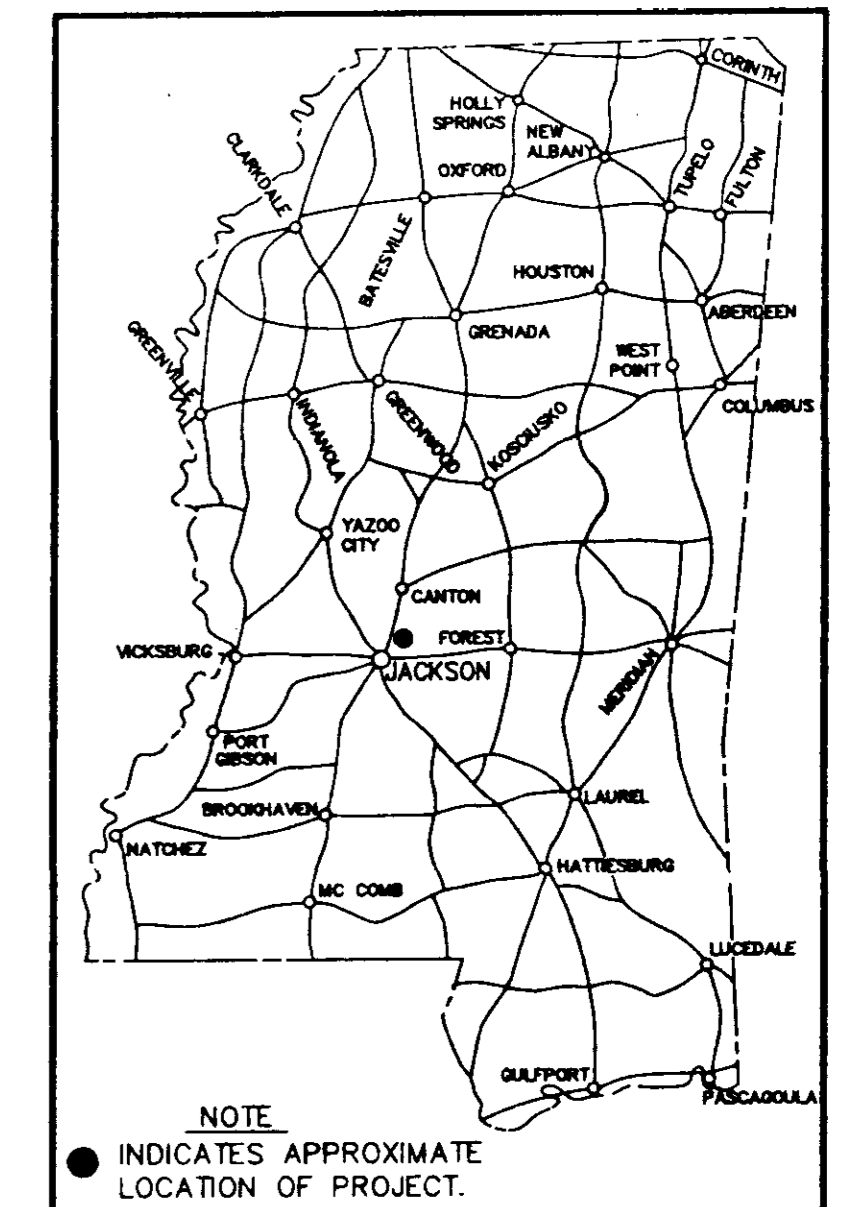
LENGTH DATA  
EXCEPTIONS  
NONE  
EQUATIONS  
NONE

LENGTH OF ROADWAY 5,743.77 FT. 1.087 MI.  
LENGTH OF BRIDGES 0.00 FT. 0.000 MI.  
LENGTH OF PROJECT (NET) 1.087 MI.  
LENGTH OF EXCEPTIONS 0.00 FT. 0.000 MI.  
LENGTH OF PROJECT (GROSS) 1.087 MI.

STATE OF MISSISSIPPI  
OFFICE OF STATE AID ROAD CONSTRUCTION  
MISSISSIPPI DEPARTMENT OF TRANSPORTATION  
PLAN AND PROFILE OF PROPOSED  
**COUNTY HIGHWAY**  
PROJECT NO. SAP-45(47)  
RICE ROAD  
MADISON COUNTY

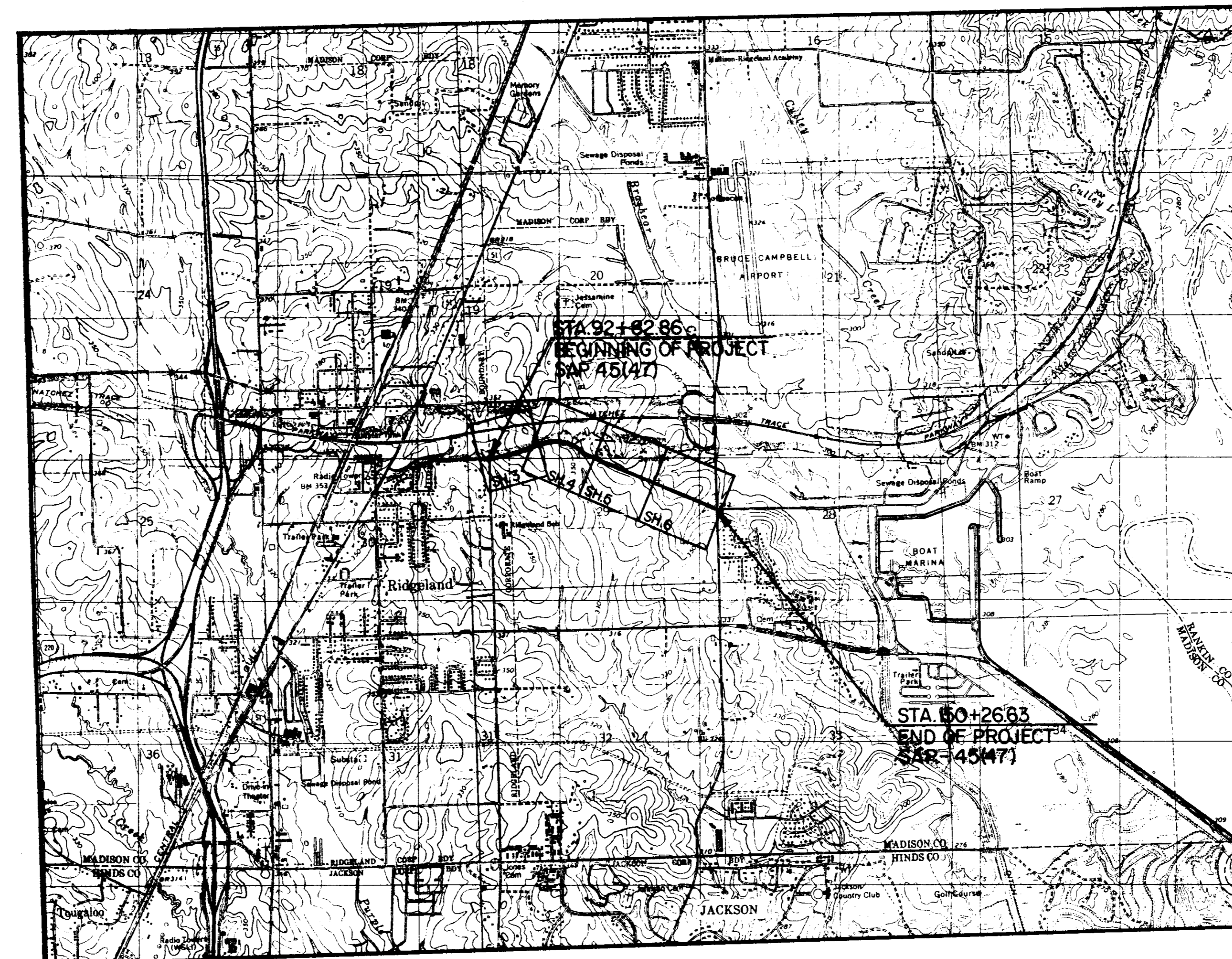
STATE AID PROJECT NO. SAP-45(47) SHEET NO. 1  
MADISON CO., MS.

INDEX  
FOR INDEX SEE SHEET NO. 2



SCALE

PLAN 1 IN. = 50 FT.  
PROFILE HORIZ: 1 IN. = 50 FT.  
VERT: 1 IN. = 5 FT.  
LAYOUT 1 IN. = 2,000 FT.

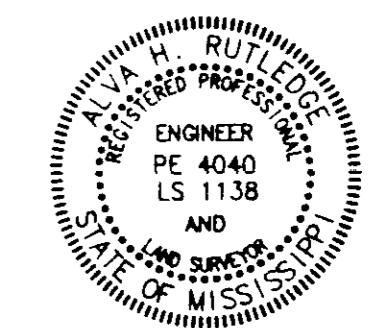


T7N

R2E



NOTE THIS PROJECT IS A RECONSTRUCTION OF PART OF PREVIOUS PROJECT NO. SAP-45(9).



PREPARED BY *Alvin H. Suttley*  
COUNTY ENGINEER

OFFICE OF STATE AID ROAD CONSTRUCTION  
MISSISSIPPI DEPARTMENT OF TRANSPORTATION  
APPROVED

STATE AID ENGINEER \_\_\_\_\_ DATE \_\_\_\_\_

MISSISSIPPI DEPARTMENT OF TRANSPORTATION  
APPROVED

EXECUTIVE DIRECTOR \_\_\_\_\_ DATE \_\_\_\_\_

STANDARD SPECIFICATIONS FOR STATE AID ROAD AND BRIDGE CONSTRUCTION CURRENTLY APPROVED BY THE OFFICE OF STATE AID ROAD CONSTRUCTION OF THE MISSISSIPPI DEPARTMENT OF TRANSPORTATION AND THE FEDERAL HIGHWAY ADMINISTRATION ARE MADE A PART HEREOF FULLY AND COMPLETELY AS IF ATTACHED HERETO, EXCEPT WHERE SUPERCEDED BY THE SPECIAL PROVISIONS, OR AMENDED BY REVISIONS.

**PWP-1836** SHEET NO. 1

SAP-45(47) MADISON COUNTY, MS.

SAP4547A 1/20/93

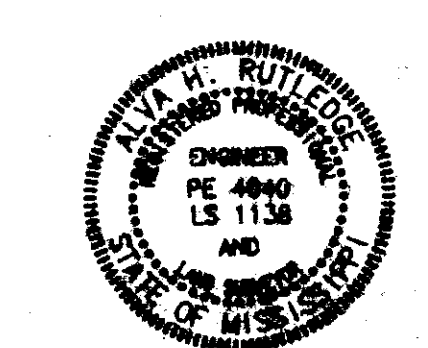
### SUMMARY OF QUANTITIES

PAY ITEM NO.	PAY ITEM	QUANTITIES		UNIT
		PLAN	FINAL	
<b>ROADWAY ITEMS</b>				
S-200-A	Mobilization	Lump Sum		Lump Sum
S-201-B	Clearing & Grubbing	0.14		Acre
S-202-A	Removal Of Asphalt Pavement	14,782		Sq. Yd.
S-202-B	Removal Of Pipes (All Sizes)	108		Lin. Ft.
S-203-A	Unclassified Excavation (P.M.)	4,049		Cu. Yd.
S-204-A	Haul Of Unclassified Excavation (P.M.)	12,007		Sta. Yd.
S-204-B	Haul Of Unclassified Excavation (Special)(P.M.)	2,140		Unit
S-301-A	Plant Mix Bituminous Base Course (BB-1)	4,252		Ton
S-304	Granular Material (LVM)(Class 4, Group B)	9,775		Cu. Yd.
S-307-B	8" Soil-Lime-Water Mixing (Class B)	22,448		Sq. Yd.
S-307-D	Lime	396		Ton
S-403-C	Hot Bituminous Pavement Surface Course, (SC-1)	1,255		Ton
S-603-C-A	15" Reinforced Concrete Pipe, Class III	28		Lin. Ft.
S-603-C-A	18" Reinforced Concrete Pipe, Class III	28		Lin. Ft.
S-603-C-E	44" x 27" Concrete Arch Pipe, Class III	44		Lin. Ft.
S-603-C-E	58" x 36" Concrete Arch Pipe, Class III	20		Lin. Ft.
S-603-C-F	44" x 27" Concrete Arch Pipe End Section	2		Each
S-603-R-C	58" X 36" End Section Removed And Relaid	2		Each
S-617-A	Right-Of-Way Markers (Type I)	28		Each
S-617-B	Right-Of-Way Markers Removed And Reset	3		Each
901-S-618	Maintenance Of Traffic	Lump Sum		Lump Sum
901-S-618-A	Additional Construction Signs	0.0		Sq. Ft.
901-S-619-B	Traffic Stripe (Skip Yellow)(Code FDTY-1, FDTY-2 OR WBTY)	0.323		Mile
901-S-619-D	Traffic Stripe (Continuous White)(Code FDTW-1, FDTW-2, OR WBTW)	2.214		Mile
901-S-619-E	Traffic Stripe (Continuous Yellow)(Code FDTY-1, FDTY-2 OR WBTY)	10,376.0		Lin. Ft.
901-S-619-H	Detail Traffic Stripe	270.0		Lin. Ft.
901-S-619-L	Legend	131.8		Sq. Ft.
S-630-1	Reflectorized Traffic Warning Sign (Encapsulated Lens)	4		Each
S-630-2	Reflectorized Traffic Regulatory Sign (Encapsulated Lens)	4		Each
S-630-8	Reflectorized Traffic Reg. Sign W/Supple Plate (Encap. Lens)	5		Each
<b>EROSION CONTROL ITEMS</b>				
S-212-A	Agricultural Limestone	10.5		Ton
S-212-B	Commercial Fertilizer (13-13-13)	2.6		Ton
S-212-F	Ammonium Nitrate	0.8		Ton
S-214	Seeding	5.25		Acre
S-215-A	Vegatative Material For Mulch	10.5		Ton
S-226	Solid Sodding	4,434		Sq. Yd.
S-815-A	Loose Rip-Rap (200#)	25		Ton
S-815-F	Filter Fabric	36		Sq. Yd.

- ① See Schedule Sheet 2-B For Areas Of Clearing And Grubbing Req'd.
- ② See Removal Of Pipes Schedule - Sheet 2-B
- ③ Vandal Resistant Hardware Required As Per Special Provision 901-S-721-1
- ④ Includes 500 Sq. Yds. (Est.) To Be Used As Directed By The Engineer.

### INDEX

SHEET NO.	TITLE
1	Title And Layout Sheet
2	Quantity And Index Sheet
2A	Typical Section Sheet
2B	Detail And Schedule Sheet
2C	Station Detail And Traffic Sign Schedule Sheet
2D	Stream Detail Sta. 144+35.31 - E.O.P.
2E	Intersection Detail Sheet
2F	Traffic Control Plan
<b>ROADWAY STANDARD DRAWING</b>	
100	Right-Of-Way Control
201	Right-Of-Way Markers
202	Rural Driveways
225	Pipe Culvert Installation
244.1	Flared End Section For Concrete Arch Pipe
SA-B-1	Highway Sign And Barricade Details For Construction Projects
SA-SE-1	Superelevation & Extra Width
SA-PSM-1	Pavement Striping And Marking Detail
SA-TSP-1	Traffic Sign Placement
3-6	Plan/Profile Sheets



PREPARED BY: *R. H. Rutledge*  
COUNTY ENGINEER

**RUTLEDGE and ASSOCIATES, INC.**  
CONSULTING ENGINEERS - SURVEYORS  
6250 Galaxie Dr. • P.O. Box 16489 • Jackson, MS 39216  
Telephone (601) 981-2000

SAP4547B Revised: 3/24/83 4/6/91

High Road

**SCHEDULE OF BASE STRUCTURE THICKNESS**

STATION TO STATION	ESTIMATED SUBGRADE C.B.R.	SOIL SUPPORT VALUE	AVERAGE DAILY LANE LOADING	STRUCTURE NUMBER REQUIRED	REQUIRED DESIGN SOIL THICKNESS		REQUIRED SUBBASE THICKNESS		REQUIRED BASE COURSE THICKNESS		REQUIRED SURFACE COURSE THICKNESS		TOTAL STRUCTURE NUMBER
					IN	SN	IN	SN	IN	SN	IN	SN	
B.O.P.-E.O.P.	1	1.42	23	3.39	8"	0.48	6"	0.66	5"	1.70	1-1/2"	0.66	3.50

**DATA FOR PAVEMENT DETERMINATION**

(1992)ADT = 1280 MDOT
(2000)ADT = 1421 n YEAR
(2012)ADT = 1664 DESIGN
DHV = 249
D = 50 % OF DHV
T = 7 % OF DHV
T(TOTAL) = 8 % OF ADT
18K(FLEX) = 375 /1000
18K(RIGID) = 0' / 1000'
CBR = 1

**REQUIRED STRUCTURE NUMBER**

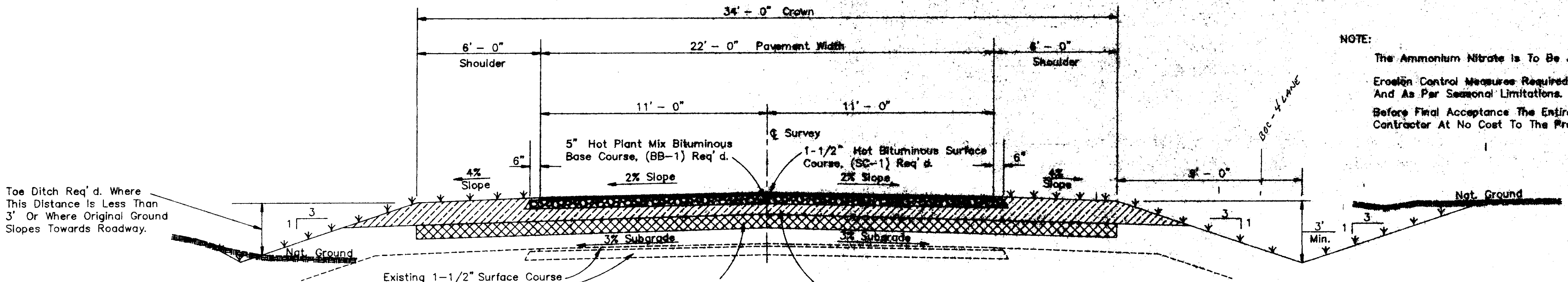
2012	2000
ADL 25	ADL 23
CBR 1	CBR 1
SSV 1.42	SSV 1.42
PT 2	PT 2
SN 3.92	SN 3.39

**RATES OF APPLICATION USED FOR ESTIMATING QUANTITIES**

ITEM	RATE
Hot Bituminous Pavement Surface Course, (SC-1)	110 Lbs. Per Sq.Yd./In.
Hot Plant Mix Bituminous Base Course, (BB-1)	119 Lbs. Per Sq.Yd./In.
Granular Material, (Class 4, Gp.B)	165.0 Cu.Yds./Sta. (2-Lane Section)
Granular Material, (Class 4, Gp.B)	195.0 Cu.Yds./Sta. (3-Lane Section)
Agricultural Limestone	2 Tons/Acre
Commercial Fertilizer (13-13-13)	0.6 Tons/Acre
Ammonium Nitrate	0.18 Tons/Acre
Vegetative Materials For Mulch	2 Tons/Acre
Lime (60% By Weight)	4.41 Lbs./Sq.Yd./In.

NOTE: Subgrade CBR is Estimated Only. A Subgrade Soil Profile Will Be Prepared And The CBR And The Req'd Base Structure Thickness Determined After Grading And Before Placing Base Material.

NOTE:  
The Ammonium Nitrate is To Be Applied After Grass Has Been Established.  
Erosion Control Measures Required On Areas Shown Thusly And As Per Seasonal Limitations.  
Before Final Acceptance The Entire Right-Of-Way Shall Be Mowed By The Contractor At No Cost To The Project.



**TYPICAL RECONSTRUCTION SECTION**

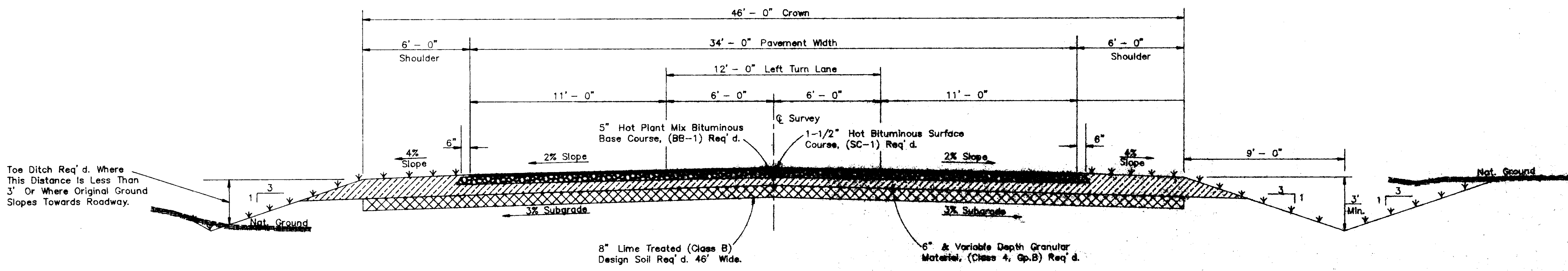
SCALE: 1" = 3'  
Sta. 93+30 - Sta. 144+35.13

1/2 Fill

1/2 Cut

TRANSITION  
Sta. 144+35.13 - Sta. 146+35.13

PROPOSED - 4 LANES



**TYPICAL 3-LANE RECONSTRUCTION SECTION**

SCALE: 1" = 3'  
Sta. 146+35.13 - E.O.P.

1/2 Fill

1/2 Cut

COUNTY	PROJECT NO.
MADISON	SAP-45(47)

Rice Road

SHEET NO.	STATION	WIDTH	PAVED AREA	GRANULAR MATERIAL (Cl.4, Gp. "B")
4	116+81.5 Lt.	16'	49.60 Sq. Yds.	16.53 Cu. Yds.
4	119+64 Lt.	18'	54.93 Sq. Yds.	18.31 Cu. Yds.
5	121+01 Lt.	16'	49.60 Sq. Yds.	16.53 Cu. Yds.
		UNITS	S.Y.	C.Y.
		TOTAL	154.13	51.37

SHEET NO.	STATION	ROUND PIPE		REMARKS
		18"	28"	
4	115+10.8	52'		X-Drain
4	116+81.5 Lt.	28'		● Ramp Lt.
4	119+64 Lt.	28'		● Ramp Lt.
		UNITS	L.F.	
		TOTAL	108	

Location	Area	Base Course	Area	Surface Course	Granular Material
					(Cl.4, Gp.B)(LVM)
	Sq. Yd.	Ton	Sq. Yd.	Ton	Cu. Yd.
Roadway B.O.P. - 93+30			115.23	9.51	
Roadway 93+30-144+35.13	13,046.44	3,587.77	12,479.21	1,029.29	8,423.46
Roadway 144+35.13- 146+75.13	773.33	212.67	746.67	61.80	432.00
Roadway 146+75.13- E.O.P.	1,366.94	375.91	1,327.89	109.55	685.43
Extra Widths In Curves	191.05	52.54	191.05	15.76	127.37
Extra Areas ● B.O.P.			122.59	10.11	
Extra Areas ● E.O.P.	83.21	22.88	76.70	6.33	55.47
Ramps			154.13	12.72	51.37
<b>TOTALS</b>	<b>15,460.97</b>	<b>4,281.77</b>	<b>15,213.47</b>	<b>1,254.87</b>	<b>9,775.10</b>

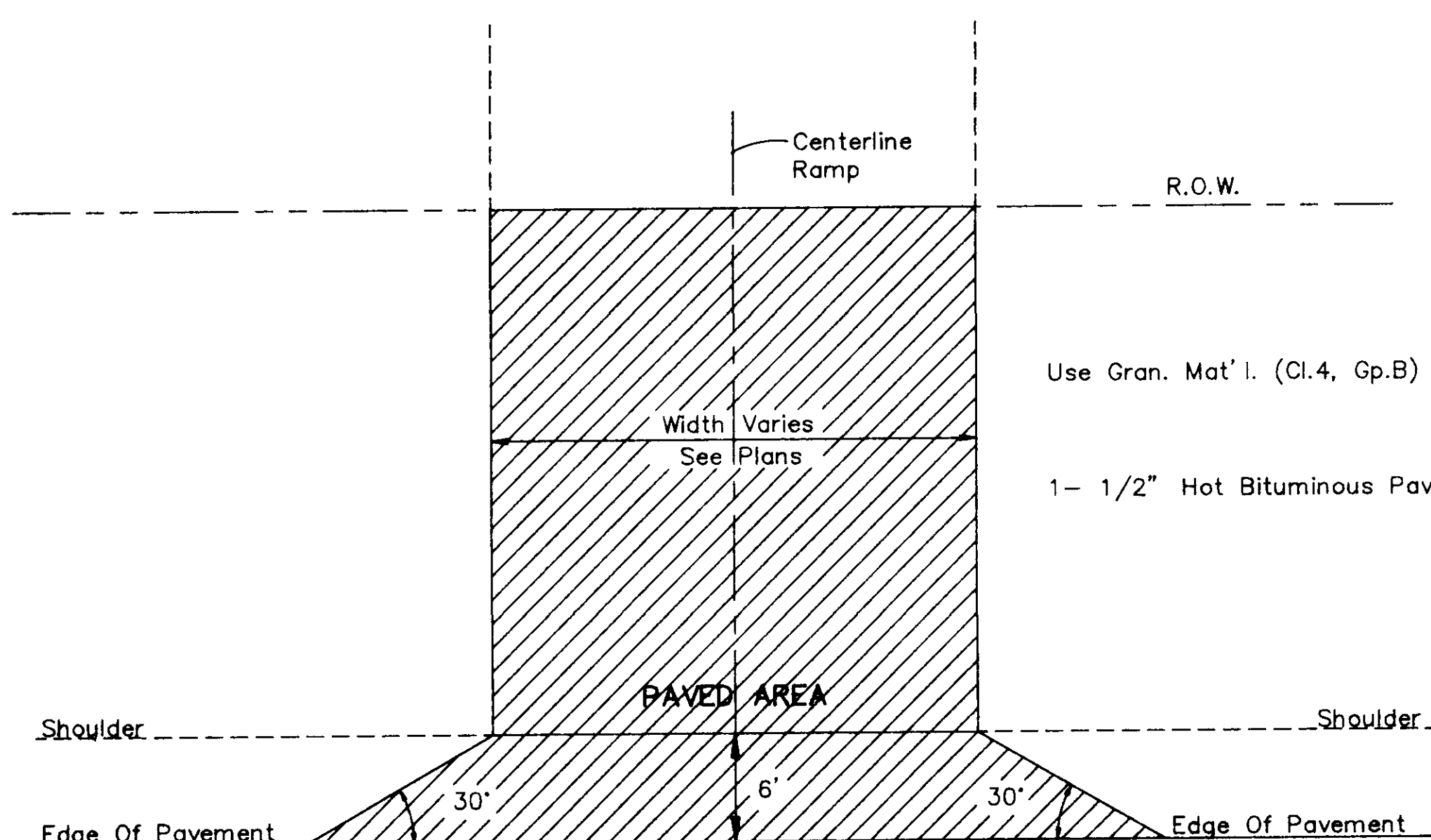
SHEET NO.	STATION	CONCRETE ARCH PIPE, CLASS III	CONCRETE FLARED END SECTIONS	REMARKS
4	115+11	44" x 27"	44" x 27"	X-Drain
6	148+92	58" x 36"	44" x 27"	X-Drain (12' Lt.-8' Rt.)
		UNITS	L.F.	EACH
		TOTAL	44	20

SHEET NO.	STATION	ROUND PIPE		REMARKS
		15"	18"	
4	116+81.5 Lt.	28'		● Ramp Lt.
4	119+64 Lt.	28'		● Ramp Lt.
		UNITS	L.F.	
		TOTAL	28	

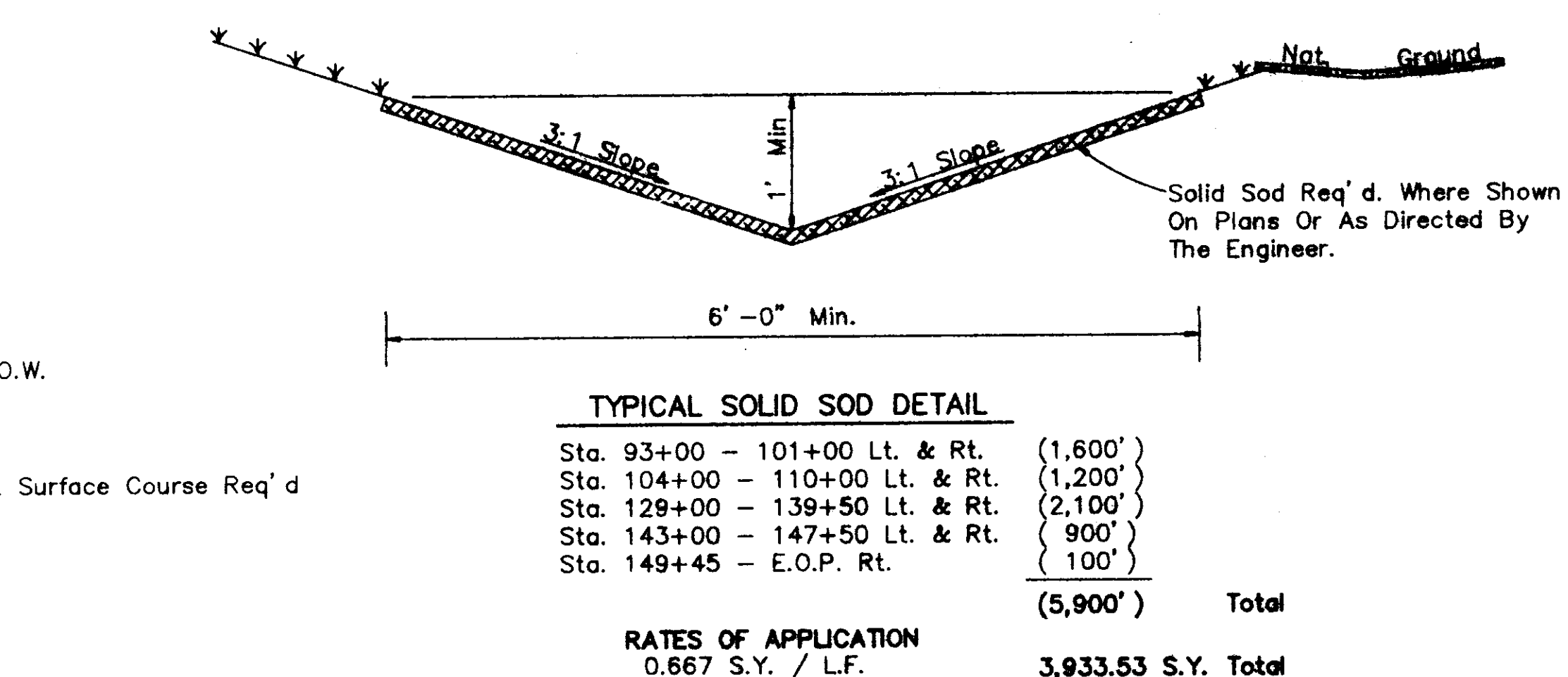
SHEET NO.	STATION	CONCRETE ARCH PIPE, CLASS III	CONCRETE FLARED END SECTIONS	REMARKS
6	148+92		58" x 36"	X-Drain
		UNITS	EACH	
		TOTAL	2	

SHEET NO.	STATION - STATION	SIDE	REMARKS
4	114+81 - 115+41	Lt.	30' x 60' Drainage Easement
4	114+91 - 115+31	Rt.	40' x 80' Drainage Easement
6	148+70 - 149+20	Lt.	30' x 50' Drainage Easement

LOCATION	LENGTH	WIDTH	AREA
			Sq. Yd.
Roadway(93+30-144+35.13)	5,105.13'	34'	19,286.05
Roadway(144+35.13- 146+75.13)	240.00'	40'	1,066.67
Roadway(146+75.13- E.O.P.)	351.50'	46'	1,796.56
Extra Widths In Curves			191.05
Extra Area At Intersection ● EOP			107.53
<b>TOTALS</b>			<b>22,447.86</b>



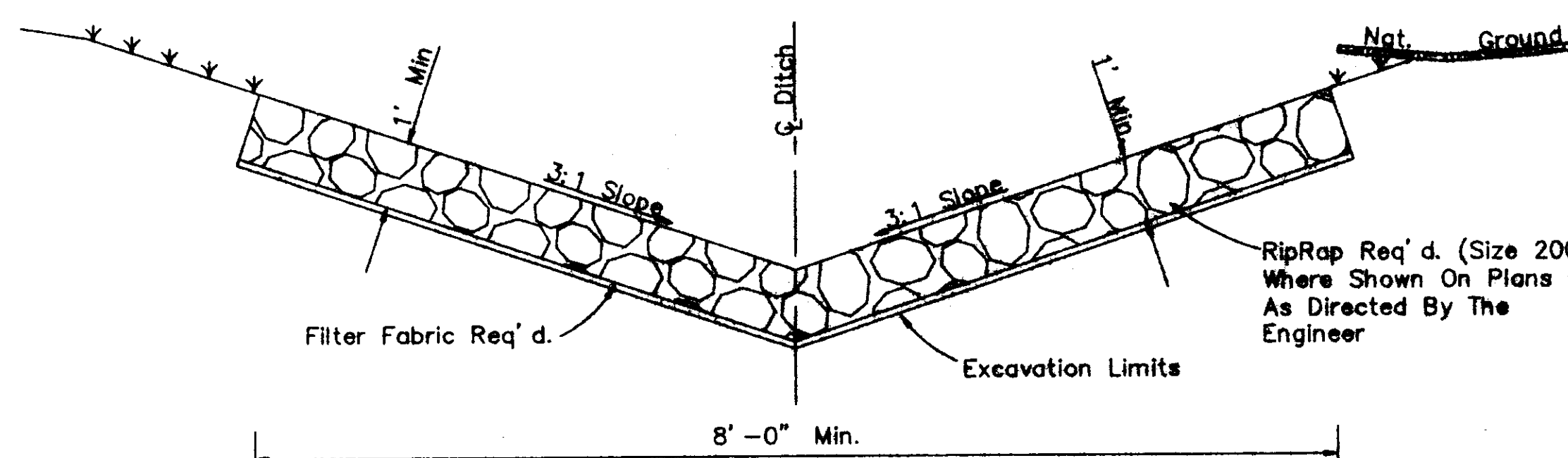
TYPICAL PAVED RAMP DETAIL



TYPICAL SOLID SOD DETAIL

Sta. 93+00 - 101+00 Lt. & Rt.	(1,600')	
Sta. 104+00 - 110+00 Lt. & Rt.	(1,200')	
Sta. 129+00 - 139+50 Lt. & Rt.	(2,100')	
Sta. 143+00 - 147+50 Lt. & Rt.	(900')	
Sta. 149+45 - E.O.P. Rt.	(100')	
	(5,900')	Total

RATES OF APPLICATION  
0.667 S.Y. / L.F.      3,933.53 S.Y. Total



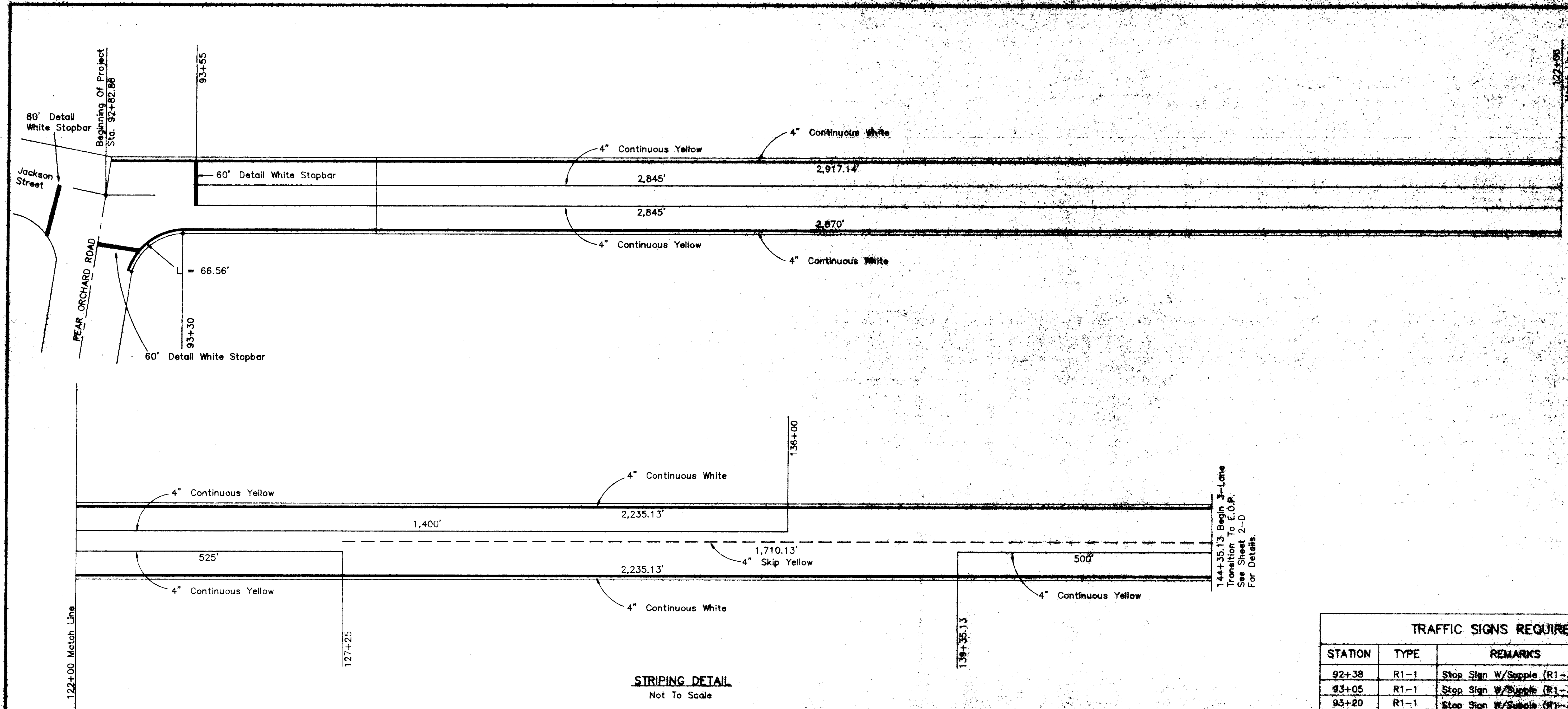
TYPICAL RIPRAP DETAIL

Sta. 148+95 - 149+45 Rt.

Location	WIDTH	LENGTH	Area
			Sq. Yd.
Roadway (93+30 - 150+26.63)	23'	5,696.63'	14,558.05
Extra Width In Curve 60' 43' 00"	2'	679.60'	151.02
Extra Width In Curve 21' 27' 00"	1'	139.01'	15.45
Extra Areas ● E.O.P.			67.85
<b>TOTALS</b>			<b>14,782.37</b>

DETAIL & SCHEDULE SHEET

SAP45472 Revised: 3/78/93 4/6/93



**STRIPING DETAIL**  
Not To Scale

85 Percentile Speed = 55 MPH  
Minimum Passing Sight Distance = 900 Ft.

Totals This Sheet

Skip Yellow	=	0.323 MI.
Continuous Yellow	=	8,115.00 L.F.
Continuous White	=	1,955 MI.
Detail Traffic Stripe	=	180.00 L.F.

144+35.13 Begin 3-Lane  
Transition To E.O.P.  
See Sheet 2-D  
For Details.

**TRAFFIC SIGNS REQUIRED**

STATION	TYPE	REMARKS	SIDE
92+38	R1-1	Stop Sign W/Supple (R1-3) 3Way	RT
93+05	R1-1	Stop Sign W/Supple (R1-3) 3Way	RL
93+20	R1-1	Stop Sign W/Supple (R1-3) 3Way	LT
94+00	R2-1	Speed Limit 40 MPH	RT
97+00	W3-1	Stop Ahead	LT
103+00	W1-4R	Reverse Curve	RE
115+00	R2-1	Speed Limit 40 MPH	LE
122+00	R2-1	Speed Limit 40 MPH	RL
123+65	W1-4L	Reverse Curve	LT
145+00	W3-1	Stop Ahead	RT
146+00	R2-1	Speed Limit 40 MPH	LE
149+98	R1-1	Stop Sign W/Supple (R1-3) 4Way	LT
150+15	R1-1	Stop Sign W/Supple (R1-3) 4Way	RT
Total			
4	-	Warning Signs Required	
4	-	Regulatory Signs Required	
5	-	Regulatory Signs W/Supplemental Plate Req'd	

SAP457C Revised 3/28/93

**STATE OF MISSISSIPPI**  
**DEPARTMENT OF TRANSPORTATION**  
**DESIGN DIVISION**

Scale: 1" = 20'

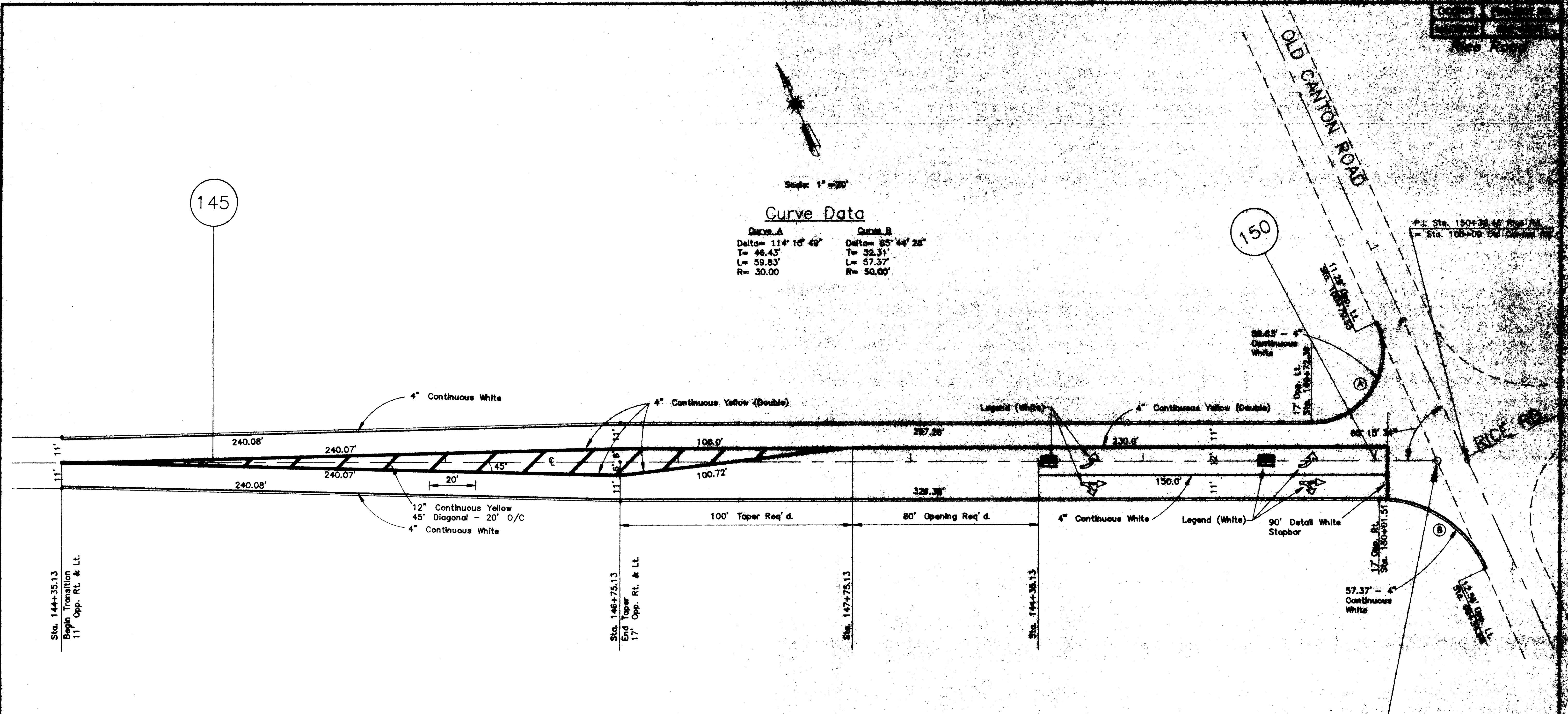
**Curve Data**

Curve A	Curve B
Delta = 114° 16' 49"	Delta = 85° 44' 28"
T = 46.43'	T = 32.31'
L = 59.83'	L = 57.37'
R = 30.00'	R = 50.00'

145

150

P.I. Sta. 150+38.45  
 = Sta. 105+00 Old Center Rd



**STRIPING DETAIL**

Scale: 1" = 20'

85 Percentile Speed = 55 MPH  
 Minimum Passing Sight Distance = 808 Ft.  
 Sub-Totals

Skip Yellow	= 0.000 MI.
Continuous Yellow	= 2,280.77 L.F.
Continuous White	= 0.258 MI.
Detail Traffic Stripe	= 90.00 L.F.
Legend	= 131.8 S.F.

**Totals (All Sheets)**

Skip Yellow	= 0.393 MI.
Continuous Yellow	= 10,375.77 L.F.
Continuous White	= 2,214 MI.
Detail Traffic Stripe	= 270.00 L.F.
Legend	= 131.8 S.F.

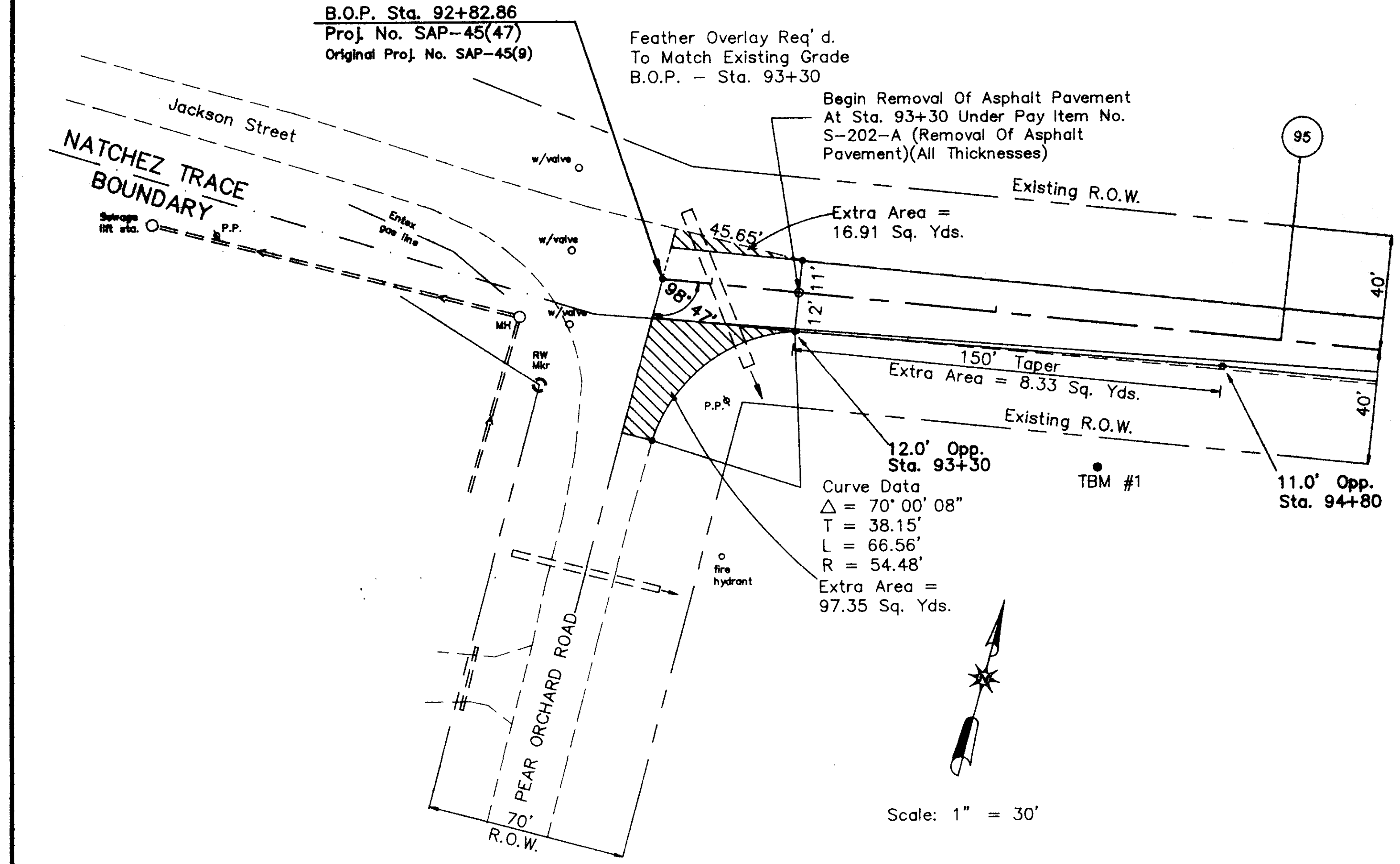
E.O.P. Sta. 150+28.63  
 Proj. No. SAP-45(47)

STRIPING DETAIL STA. 144+35.13 - 150+

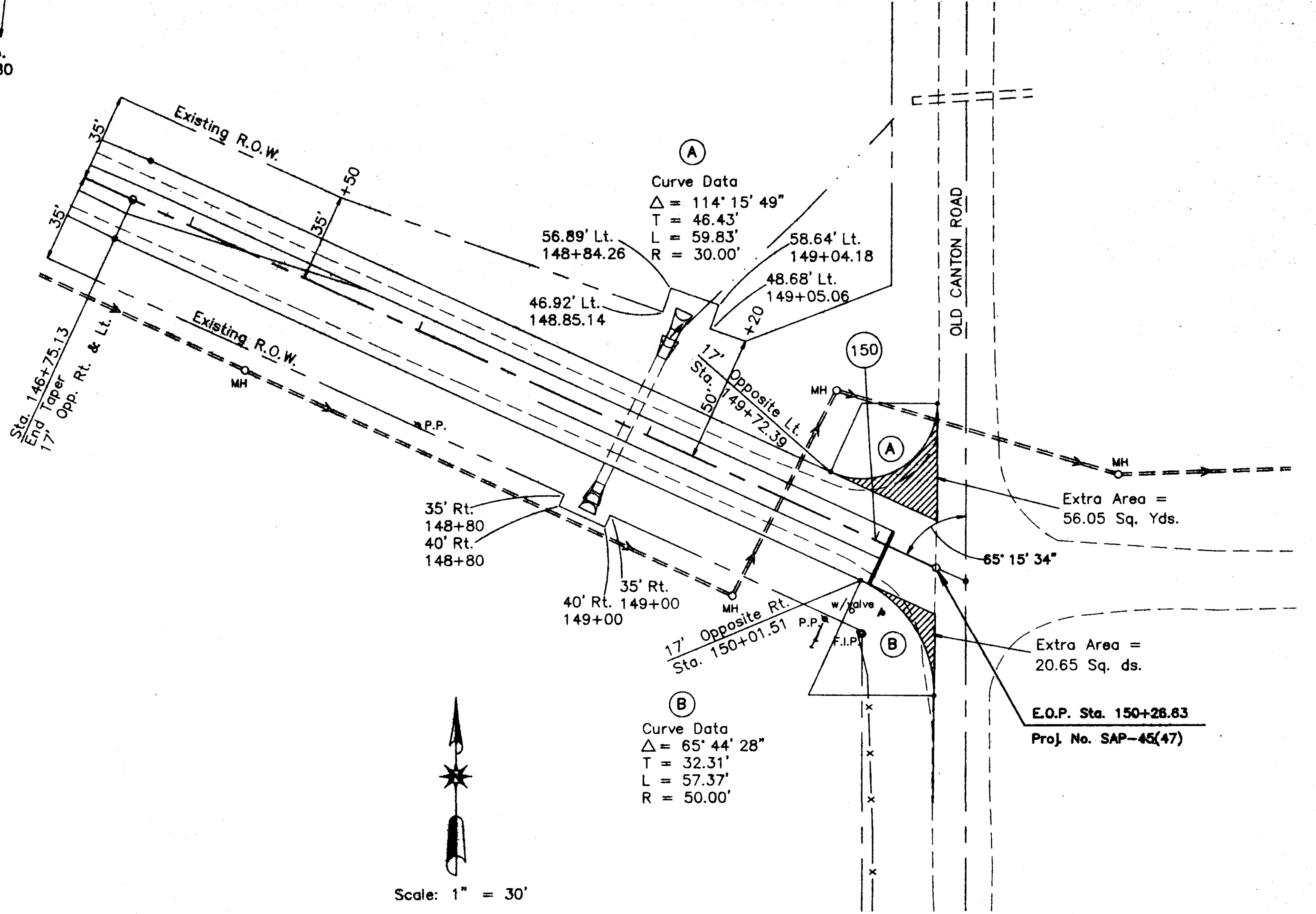
SAP-45(47) Revised: 1/31/93

COUNTY	PROJECT NO.
MADISON	SAP-45(47)

Rice Road



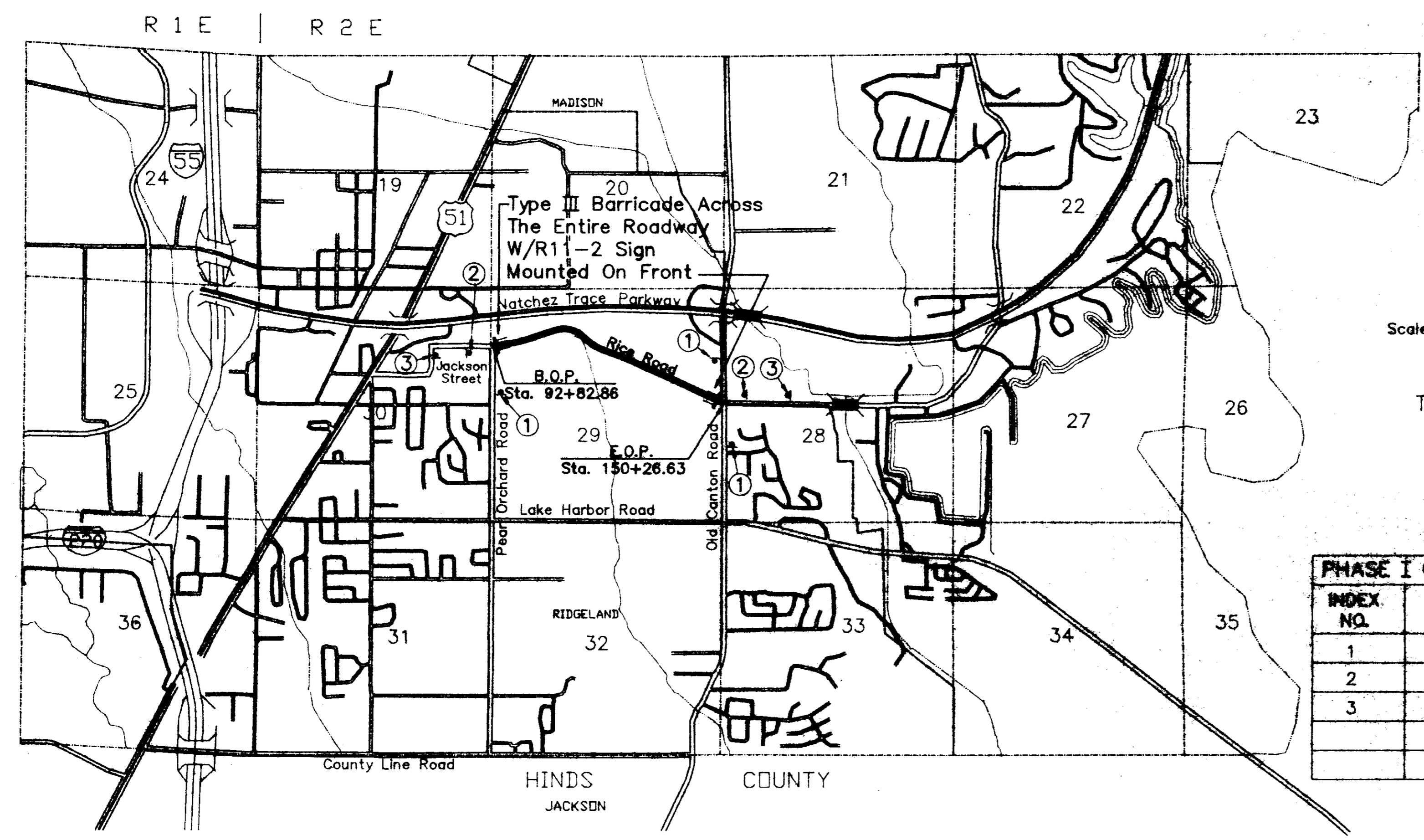
Sta. 92+82.86 Intersection Detail  
 Extra Area = 122.59 Sq. Yds.



Sta. 150+26.63 Intersection Detail  
 Extra Area = 76.70 Sq. Yds.

INTERSECTION DETAIL SHEET

SAP-45(47) Revised: 3/28/93 4/10/93



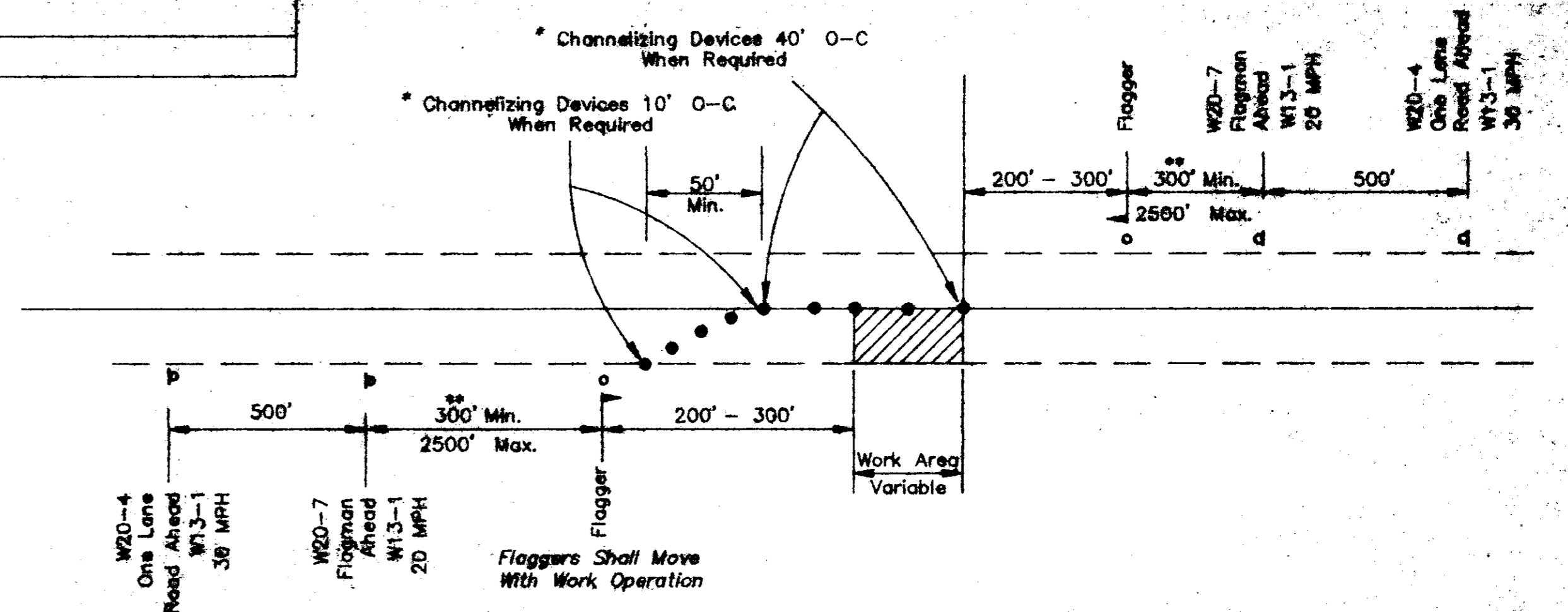
Scale: 1" = 2000'

PHASE I CONSTRUCTION SIGNING INDEX		
INDEX NO.	TYPE	DESCRIPTION
1	W20-1	Road Construction 1,000 Ft.
2	W20-3	Road Closed 500 Ft.
3	W20-3	Road Closed 1,500 Ft.

**GENERAL NOTES**

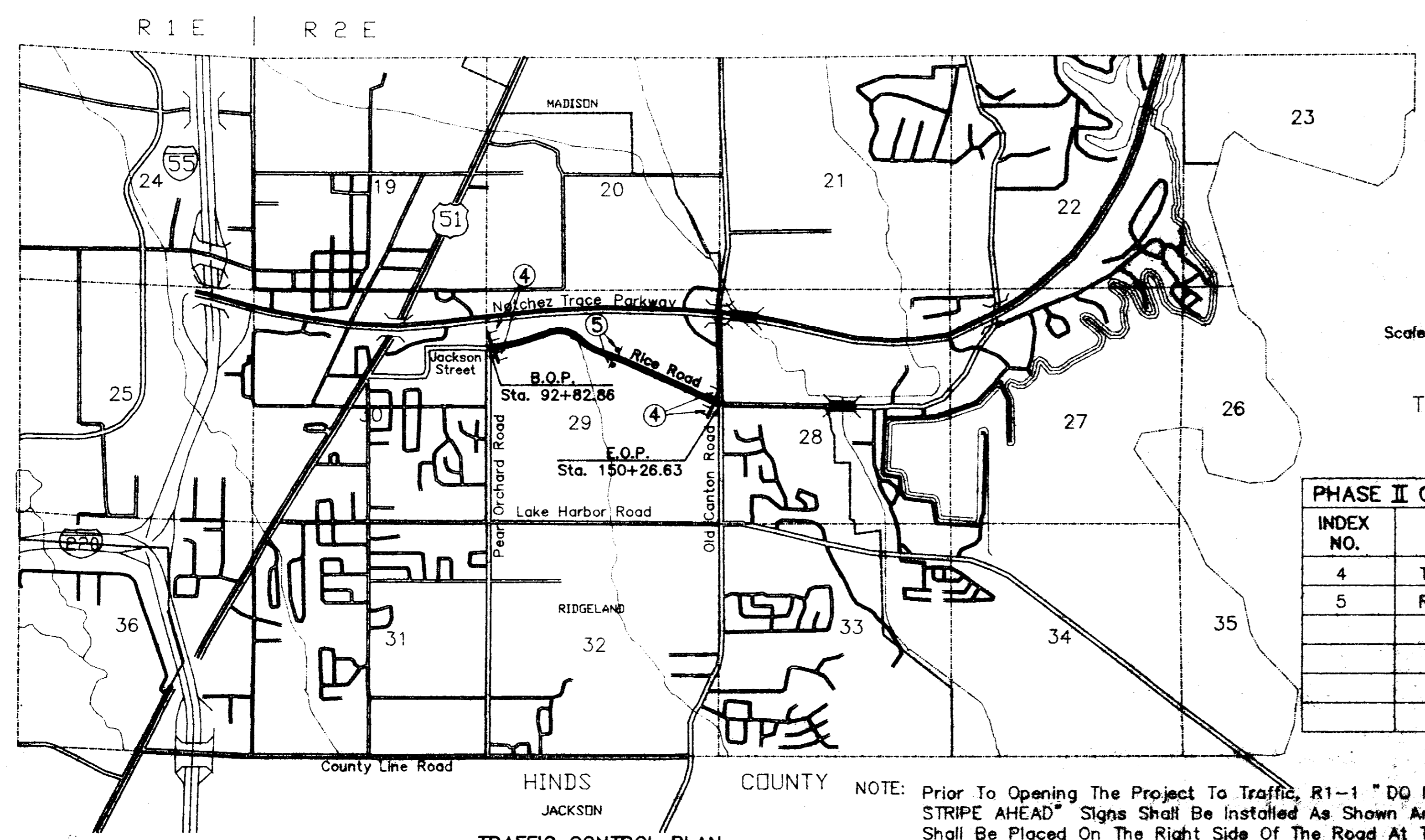
1. Contractor Shall Install Traffic Control Devices Such As Cones, Drums, Flashers, Barricades, Signs, Etc. To Safely Channel Or Direct Traffic. When Necessary, Flagman Shall Be Used In Conjunction With Traffic Control Devices. (Flagman Ahead Sign Required Except During Brief Periods Or Emergency Situations).
2. Traffic Control Devices Shall Be Installed Whenever Necessary, Remain In Place Only As Long As They Are Needed, And Be Removed Immediately Thereafter.
3. Traffic Control Devices Shall Conform To Applicable Specifications Of The "Manual On Uniform Traffic Control Devices", Latest Edition.
4. These Are Minimum Requirements And In No Way Relieve The Contractor Of His Obligation To Maintain Traffic In A Safe Manner.
5. See SA-B-1 And SA-TSP-1 For Correct Placement And Installation Of Barricades And Signs.

TRAFFIC CONTROL PLAN  
 PHASE I



ONE LANE CLOSURE PLAN WHEN REQUIRED

\* Channelizing Devices Shall Be A Minimum Height Of 24".  
 \*\* 500' For Stationary Work Site



Scale: 1" = 2000'

PHASE II CONSTRUCTION SIGNING INDEX		
INDEX NO.	TYPE	DESCRIPTION
4	Type III	Wing Barricade
5	R4-1	Do Not Pass
		Post Mounted 48" x 48" Signs Reading "No Centerline Stripe Ahead" Shall Be Placed At The Beginning Of Project And The End Of Project.

**STRIPING OPERATIONS**

1. A Shadow Vehicle Shall Be Positioned Approximately 300 Feet In Front Of And Behind Painting Operations.
2. The Shadow Vehicle Shall Carry Sign "Roadway Striping Ahead". Bottom Of Sign Shall Be A Minimum Of Six (6) Feet Above Pavement.
3. A Flashing Yellow Light Shall Be Installed Above Top Of Warning Sign.
4. A Flashing Yellow Light Shall Be Installed On All Vehicles Used In The Marking Operations.

NOTE: Prior To Opening The Project To Traffic, R1-1 "DO NOT PASS" Signs "NO CENTERLINE STRIPE AHEAD" Signs Shall Be Installed As Shown And R4-2 "PASS WITH CARE" Signs Shall Be Placed On The Right Side Of The Road At The B.O.P. & E.O.P. This Work Will Not Be A Separate Pay Item But Will Be Considered Included In The Lump Sum Payment For Pay Item No. 901-S-618, "Maintenance of Traffic".

TRAFFIC CONTROL PLAN  
 PHASE II

SAP4547F 2/13/83

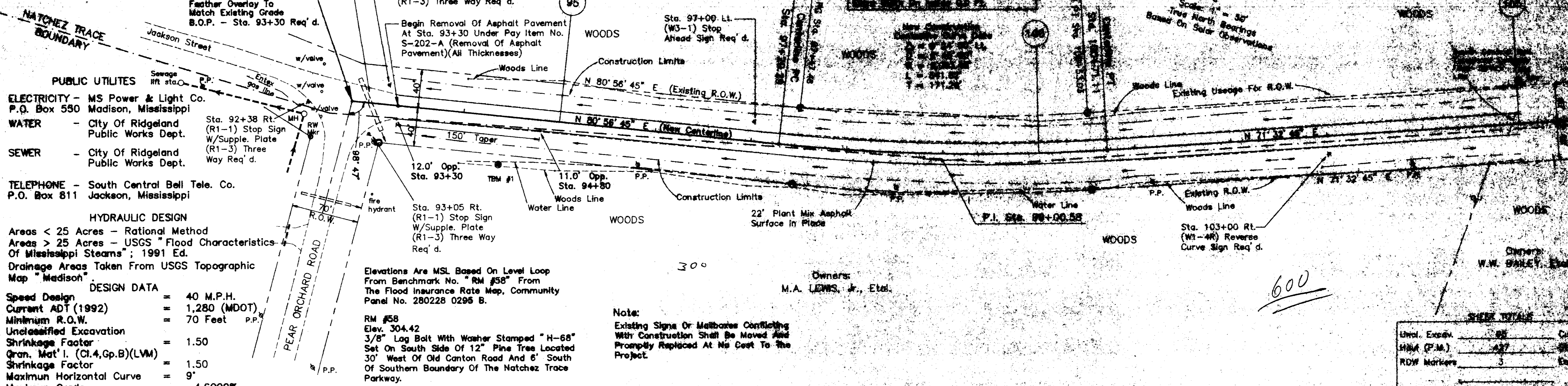


Existing Utilities Conflicting With Proposed Construction To Be Adjusted By Others In Accordance With SAD II-2-8 Of The S.O.P. For Accommodation Of Utilities On R.O.W.

**B.O.P. Sta. 92+82.86**  
**Proj. No. SAP-45(47)**  
 Original Proj. No. SAP-45(9)

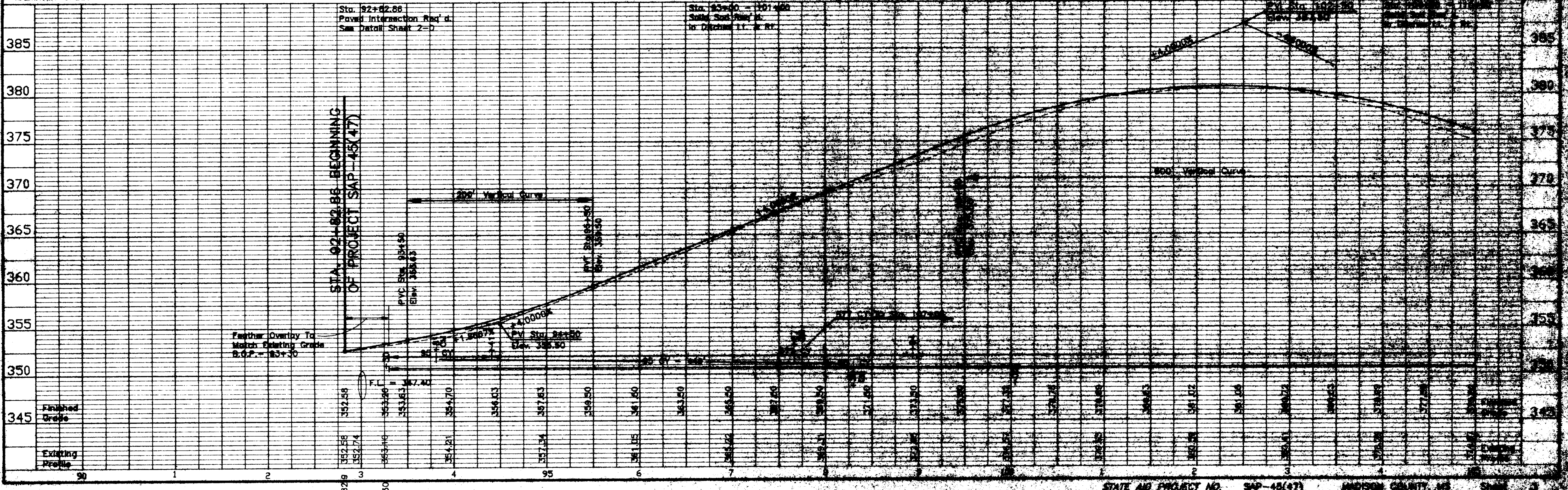
B.M. ELEVATION 354.53  
 Cotton Spindle in 20" Pine  
 50 FT. RT. STA. 94+40

Existing Curve Data  
 $\Delta = 9^{\circ} 24' 00''$  Lt.  
 $R = 374.36'$   
 $E = 1,882.58'$   
 $L = 385.87'$   
 $T = 153.13'$



SHEET TOTALS

Unval. Excep.	85	Col. Yes
MHA (P.M.)	437	Col. Yes
ROW Markers	3	Col. Yes

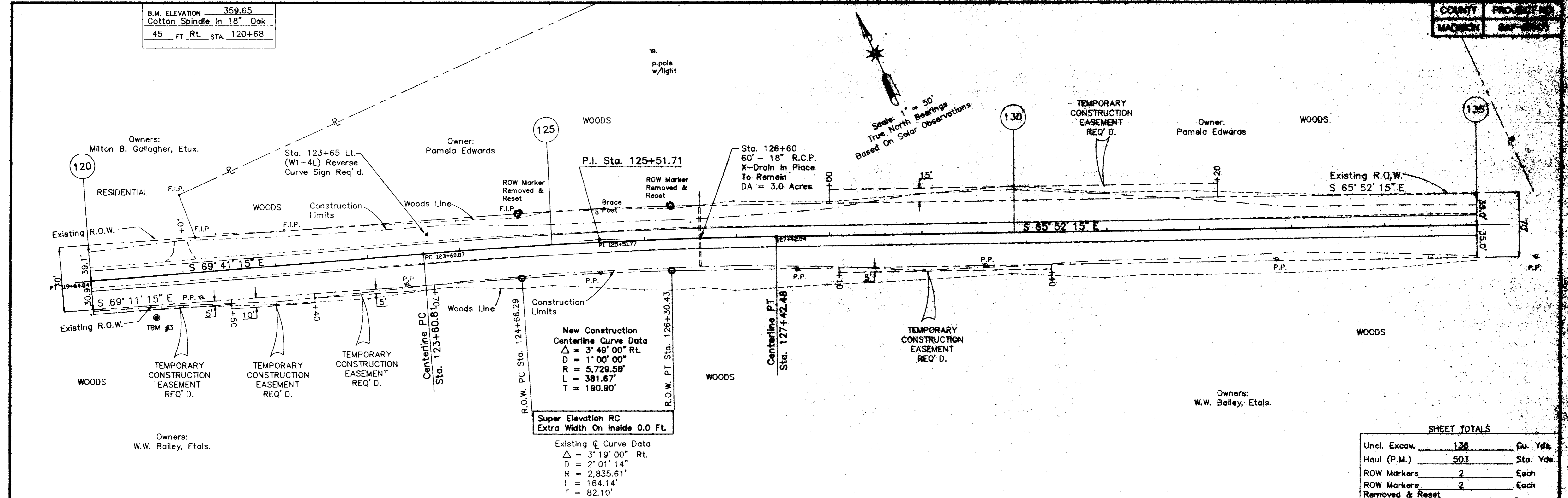


SAP-45(47) Revised 3/7/93 4/6/93



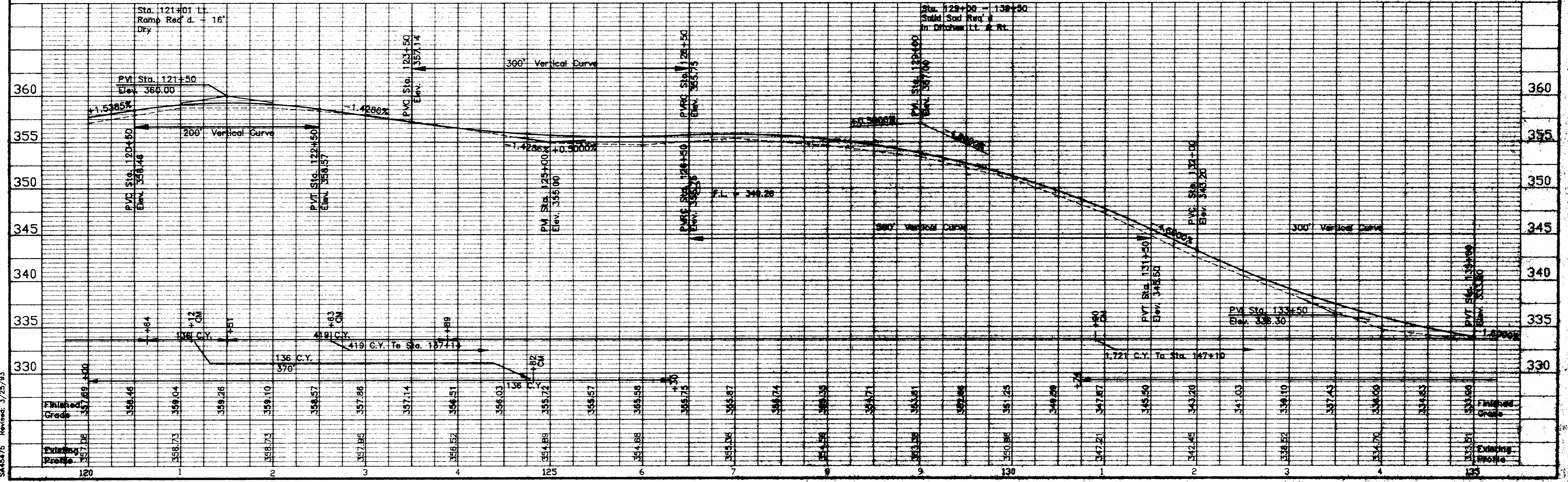
B.M. ELEVATION 359.65  
Cotton Spindle In 18" Oak  
45 FT. Rt. STA. 120+68

COUNTY PROJECT NO.  
MADISON SAP-45(7)



SHEET TOTALS

Uncl. Excav.	138	Sta. Yds.
Haul (P.M.)	503	Sta. Yds.
ROW Markers	2	Each
ROW Markers Removed & Reset	2	Each



SAP-45(7) Revised: 3/25/93

B.M. ELEVATION 334.15  
Cotton Spindle In 20" Pine  
46 FT. Rt. STA. 136+31

B.M. ELEVATION 313.18  
Cotton Spindle In 18" Oak  
66 FT. Rt. STA. 149+39

COUNTY	PROJECT NO.
MADISON	SAP-45(47)

PROJECT TOTALS		
Uncl. Excav.	4,049	Cu. Yds.
Haul (P.M.)	2,140	Units
Haul (P.M.)	12,007	Sta. Yds.
ROW Markers	28	Each
ROW Markers	3	Each
Removed & Reset		

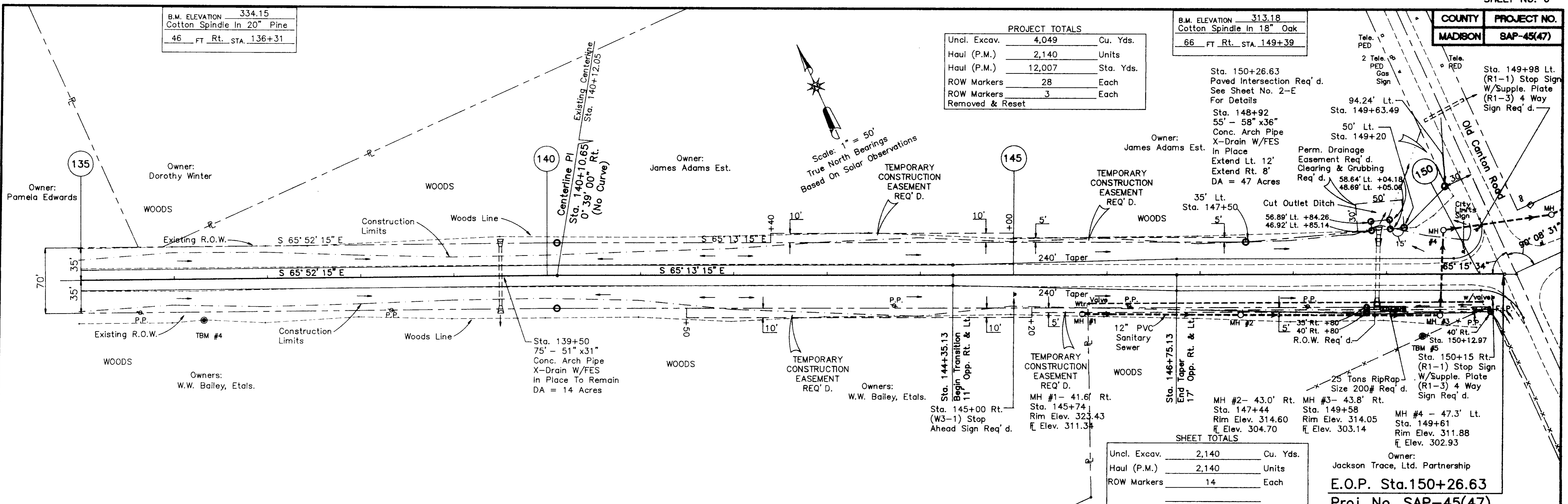
Sta. 150+26.63  
Paved Intersection Req'd.  
See Sheet No. 2-E  
For Details

Sta. 148+92  
55' - 58" x36"  
Conc. Arch Pipe  
X-Drain W/FES  
In Place  
Extend Lt. 12'  
Extend Rt. 8'  
DA = 47 Acres

Sta. 149+63.49  
94.24' Lt.  
50' Lt.  
Sta. 149+20

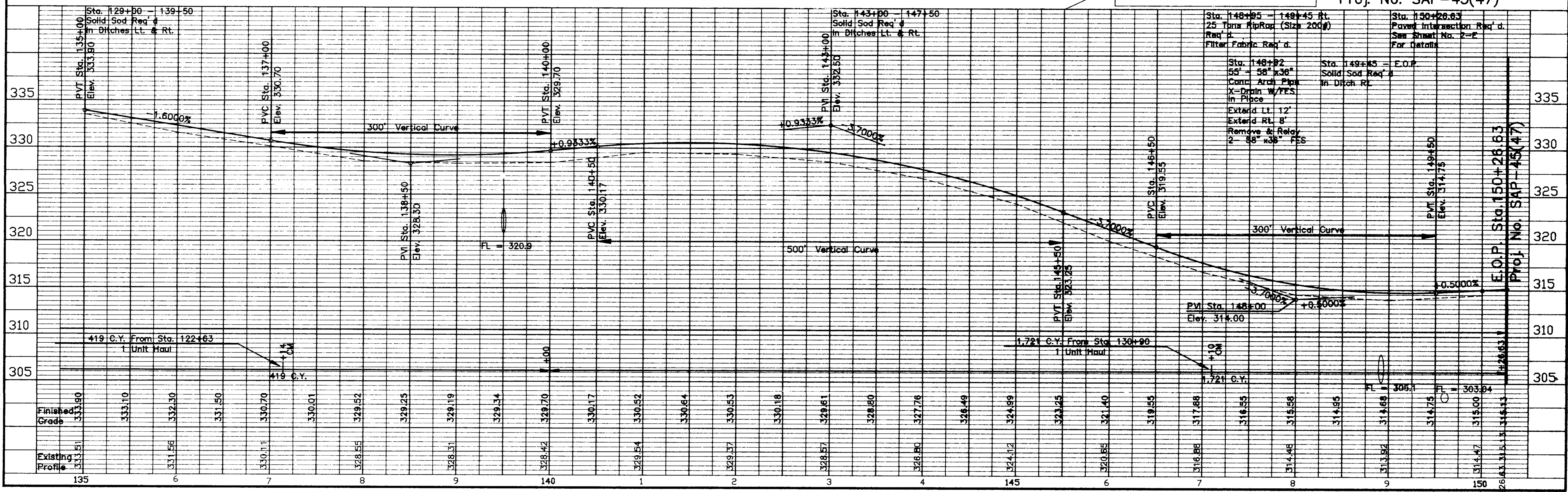
Perm. Drainage  
Easement Req'd.  
Clearing & Grubbing  
Req'd.  
58.64' Lt. +04.18  
48.69' Lt. +05.06

Sta. 149+88 Lt.  
(R1-1) Stop Sign  
W/Supple. Plate  
(R1-3) 4 Way  
Sign Req'd.



SHEET TOTALS		
Uncl. Excav.	2,140	Cu. Yds.
Haul (P.M.)	2,140	Units
ROW Markers	14	Each

Owner:  
Jackson Trace, Ltd. Partnership  
**E.O.P. Sta.150+26.63**  
Proj. No. SAP-45(47)

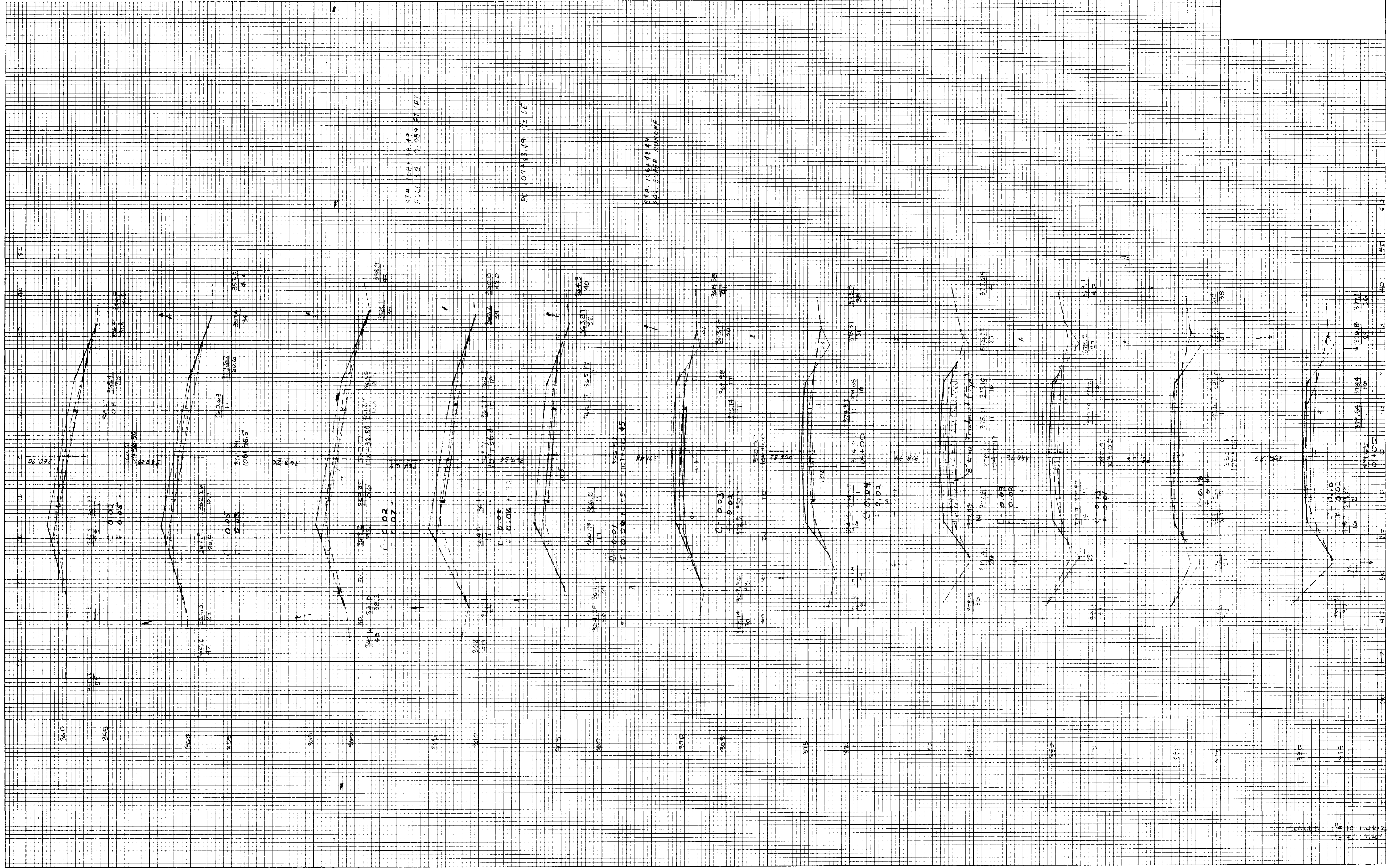


SA45476 Revised: 7/27/03 4/8/95



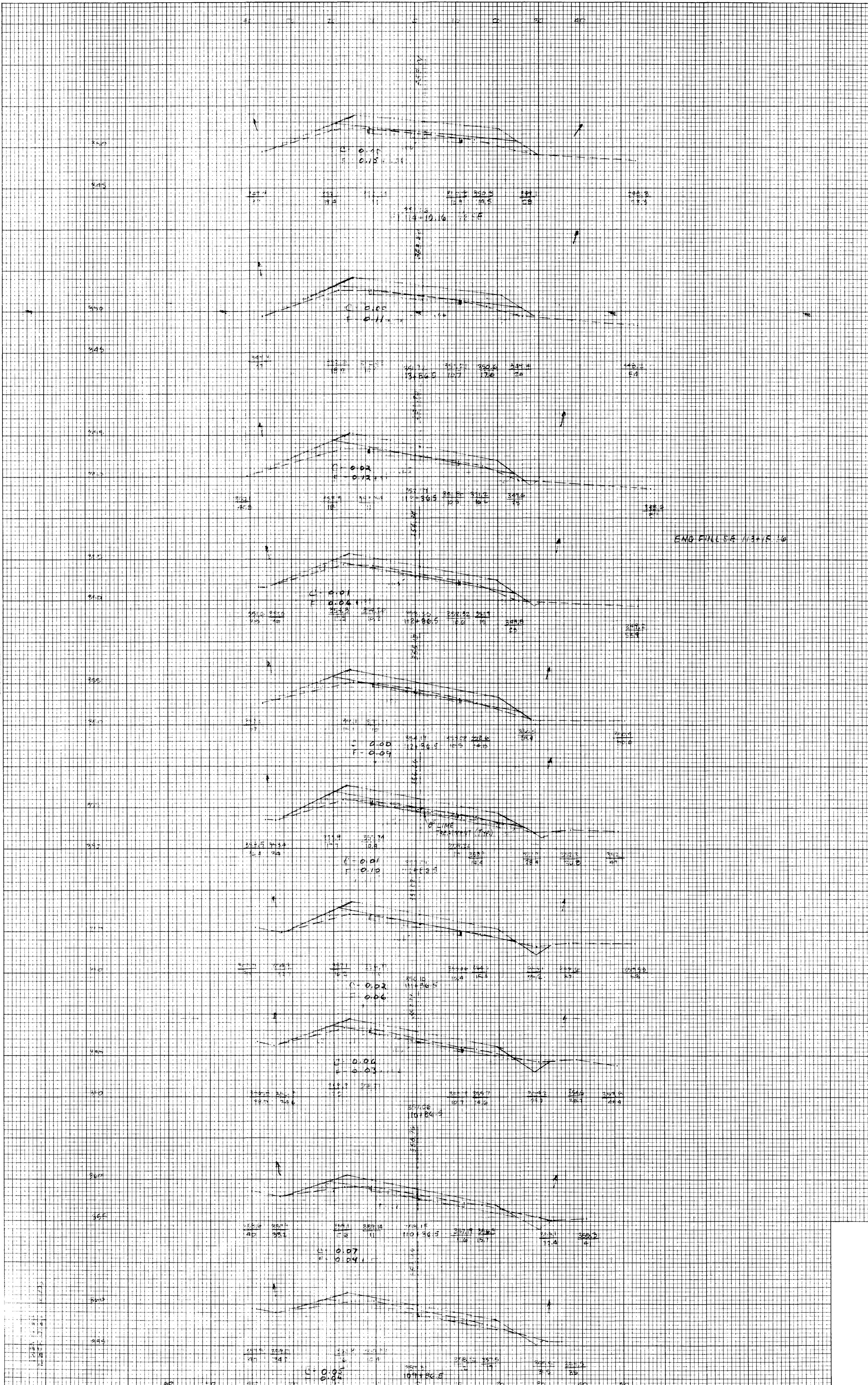
FINAL SURVEY PLOTTED BY DATE  
 NOTE BOOK AREA NO. CHECKED  
 SURVEY PLOTTED AREA NO. CHECKED

ORIGINAL SURVEY PLOTTED BY DATE  
 NOTE BOOK AREA NO. CHECKED  
 SURVEY PLOTTED AREA NO. CHECKED



ORIGINAL SURVEY	SURVEYED	BY	DATE
NOTE BOOK NO.	PLOTTED		
	TEMPLATE		
	AREAS		
	CHECKED		

FINAL SURVEY	SURVEYED	BY	DATE
NOTE BOOK NO.	PLOTTED		
	TEMPLATE		
	AREAS		
	CHECKED		

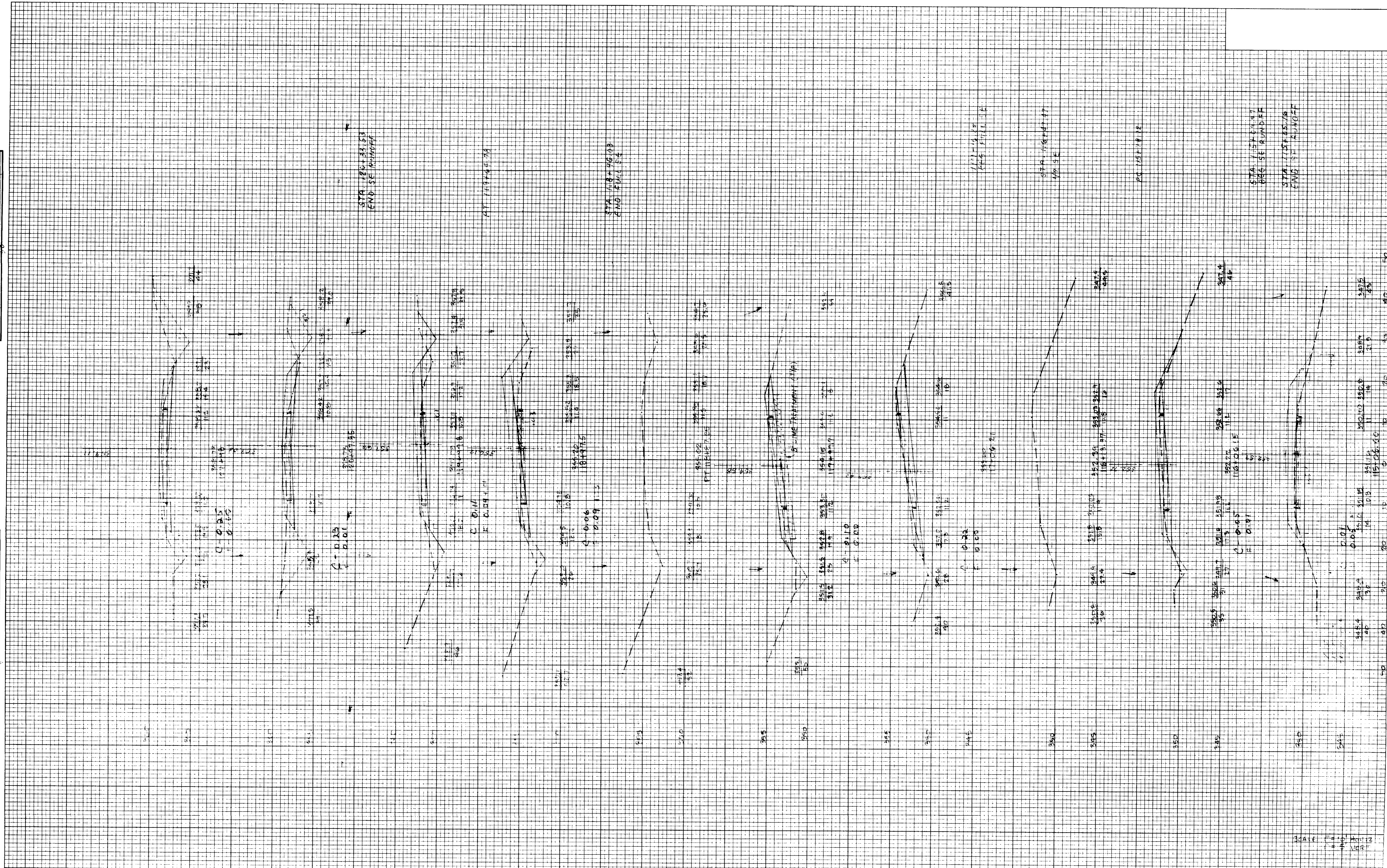


END FULL SECTION

PLATE 3-FULL CROSS SECTION-FULL LINE

ORIGINAL SURVEY SURVEYED, PLOTTED, NOTE BOOK NO. AREAS CHECKED

FINAL SURVEY SURVEYED, PLOTTED, NOTE BOOK NO. AREAS CHECKED



HIGHWAY FEDERAL AID SHEET  
 PLATE 3-FULL CROSS SECTION-FULL LINE  
 WILSON  
 PRINTED IN U.S.A.

SAP 4-(47) RICE RD

DATE: \_\_\_\_\_ BY: \_\_\_\_\_

DATE: \_\_\_\_\_ BY: \_\_\_\_\_

STA 1154+00.00  
 END SET R/W OFF

STA 1154+45.00  
 END SET R/W OFF

STA 1154+37.53  
 END SET R/W OFF

AT 1154+44.76

STA 1154+70.00  
 END SET R/W OFF

1154+37.53  
 END SET R/W OFF

STA 1154+44.77  
 END SET R/W OFF

AT 1154+70.00

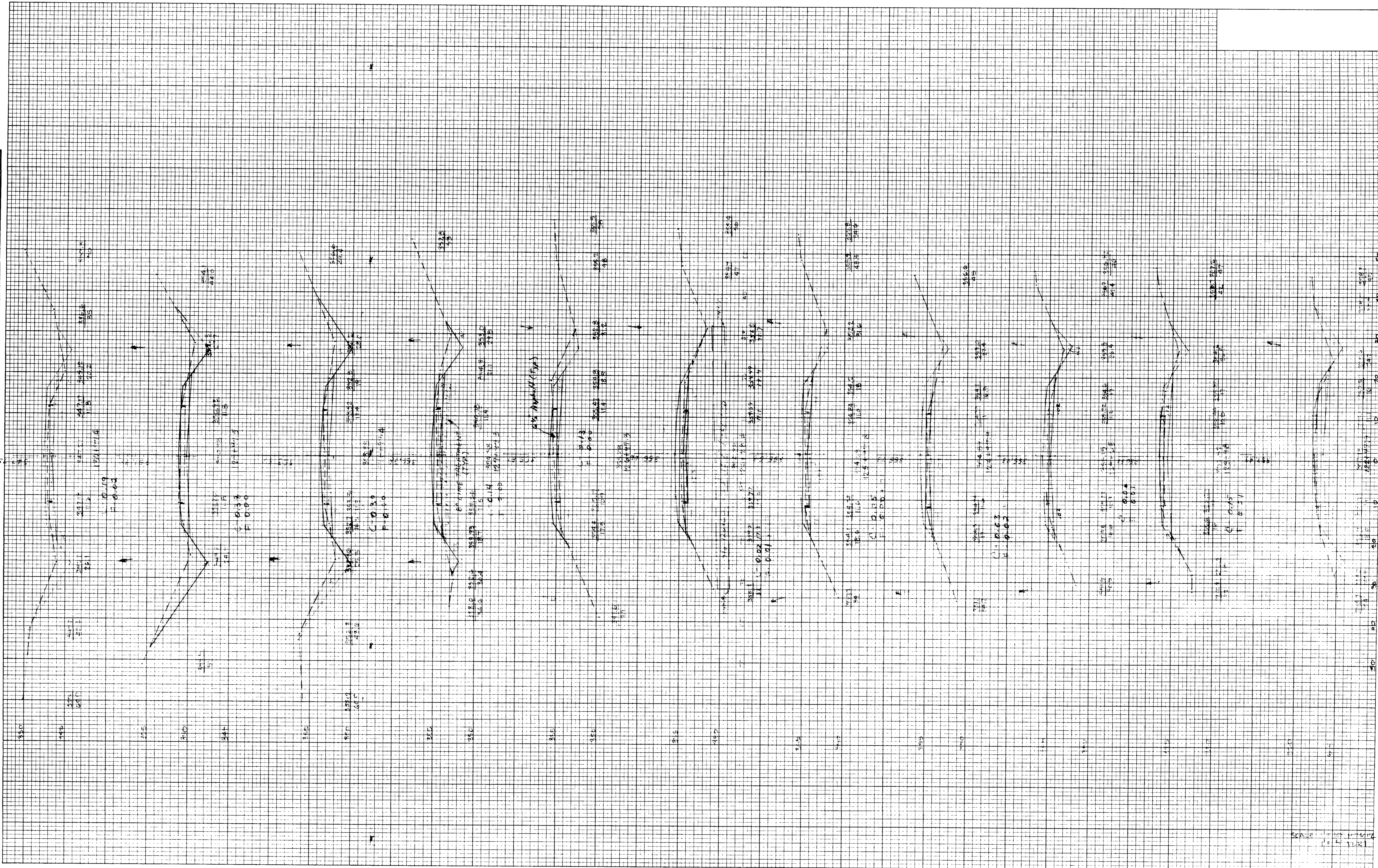
DATE: \_\_\_\_\_ BY: \_\_\_\_\_

DATE: \_\_\_\_\_ BY: \_\_\_\_\_



FINAL SURVEY SURVEYED BY DATE  
 PLOTTED BY  
 NOTE BOOK NO. 443  
 TEMPLATE NO.  
 AREAS CHECKED

ORIGINAL SURVEY SURVEYED BY DATE  
 PLOTTED BY  
 NOTE BOOK NO.  
 AREAS CHECKED



HIGHWAY FEDERAL AID SHEET  
 PLATE 3-FULL CROSS SECTION-FULL LINE  
 WISCONSIN  
 PRINTED IN U.S.A.

SD 45/67 P. 5 P.

SAP 40(47) RICE RD.  
 0.27  
 0.20

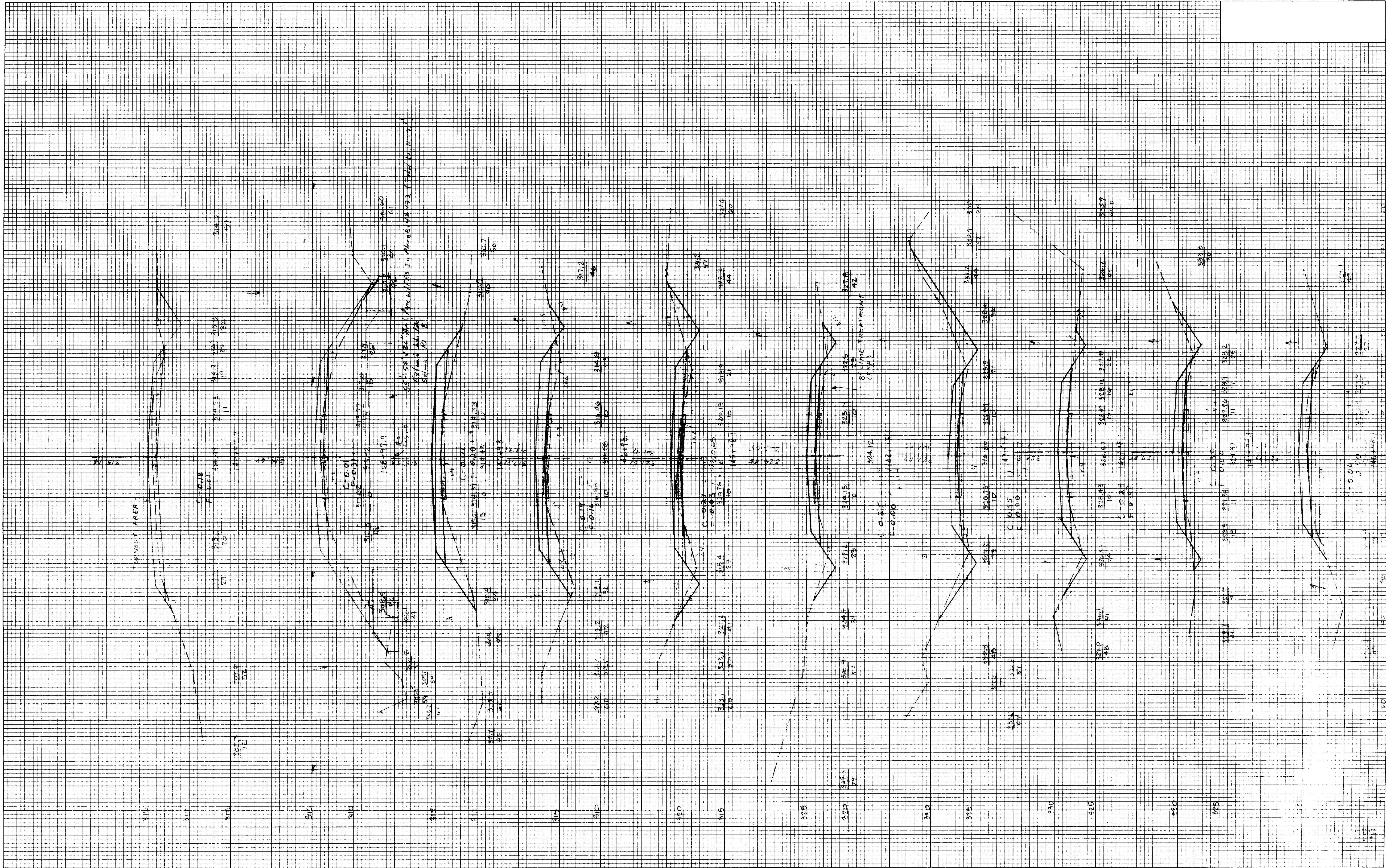


ORIGINAL SURVEY  
 SURVEYED BY: \_\_\_\_\_  
 TEMPLATE NO.: \_\_\_\_\_  
 NOTE BOOK NO.: \_\_\_\_\_  
 AREAS CHECKED: \_\_\_\_\_

FINAL SURVEY  
 SURVEYED BY: \_\_\_\_\_  
 TEMPLATE NO.: \_\_\_\_\_  
 NOTE BOOK NO.: \_\_\_\_\_  
 AREAS CHECKED: \_\_\_\_\_

DATE: \_\_\_\_\_

DATE: \_\_\_\_\_



HIGHWAY FEDERAL AID SHEET  
 PLATE 3-FULL CROSS SECTION-FULL LINE  
 7 1/2" WIDE  
 PRINTED IN U.S.A.