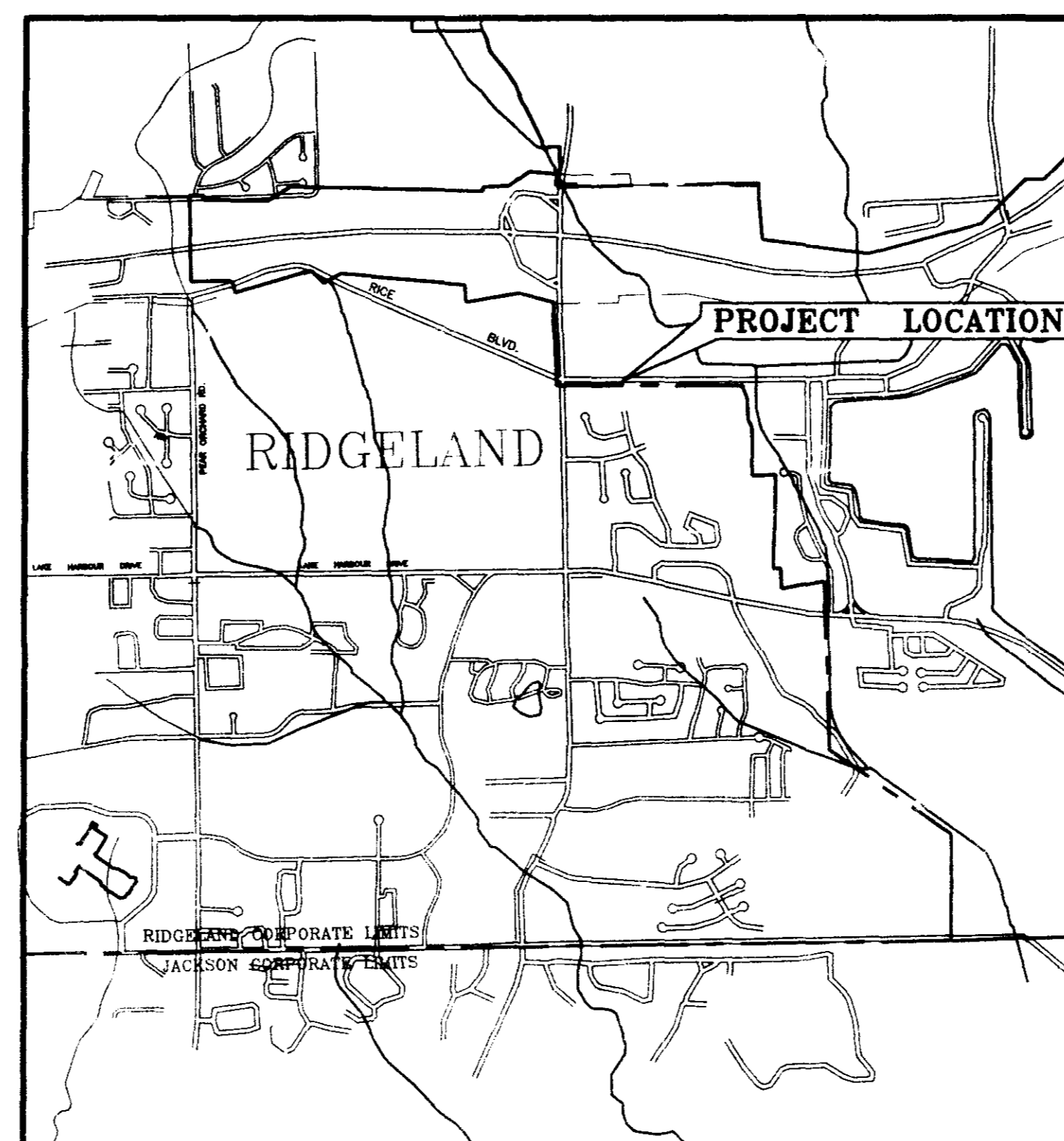


CITY OF RIDGELAND, MISSISSIPPI
RICE ROAD INTERCEPTOR
CONSTRUCTED BY
PARK TRACE LTD.

Mayor:
Gene F. McGee

Mayor Pro Tem:
Harvey Carr, Jr.

City Attorney:
Jerry Mills



VICINITY MAP

Aldermen:

Brian Barcellona
Al Bible
Harvey Carr, Jr.
Linda Davis
Daryl Smith

Public Works Director:
Sam Vinson, P.E.

City Clerk:
Michael McPhearson

Fire Chief:
Elmer Waits

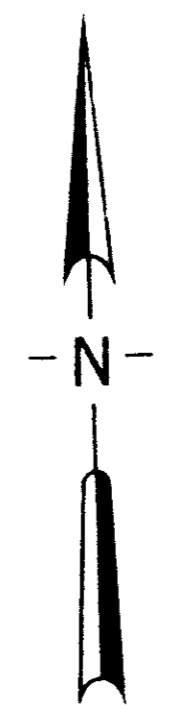
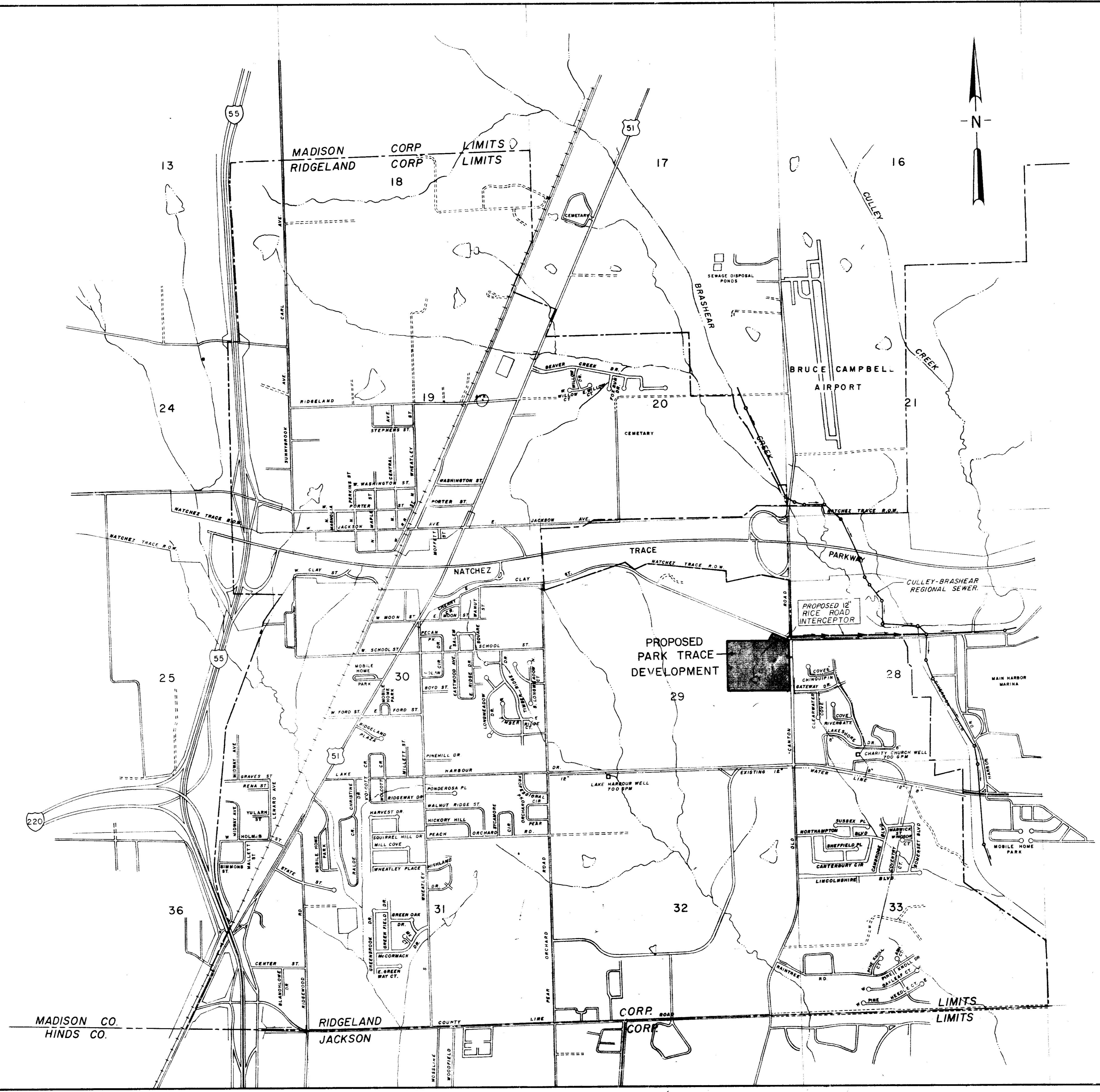
Police Chief:
Charles Newell

AUGUST , 1991

WAGGONER ENGINEERING, INC.
CONSULTING ENGINEERS INC.
JACKSON / BRANDON, MISSISSIPPI



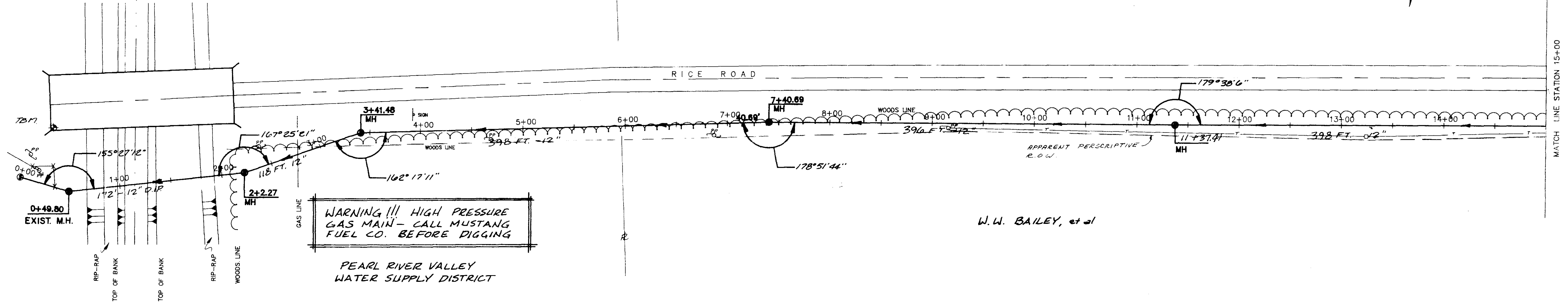
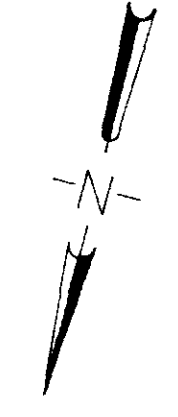
PWP-01802^{CECOY}



RECORD
DRAWING
9-91

RICE ROAD INTERCEPTOR		
PROJECT LAYOUT		
WAGGONER ENGINEERING INC. Consulting Engineers — Jackson / Brandon, Ms.		
DRAWN BY: T. D. L.	DATE: 3-20-87	SHEET NO.
CHECKED BY: G. G.	SCALE: 1" = 1000'	1 OF 5
APPROVED BY: J. A. W.		

TBM ELEV. 299.54
HACK SQUARE ON
NE COR. BRIDGE



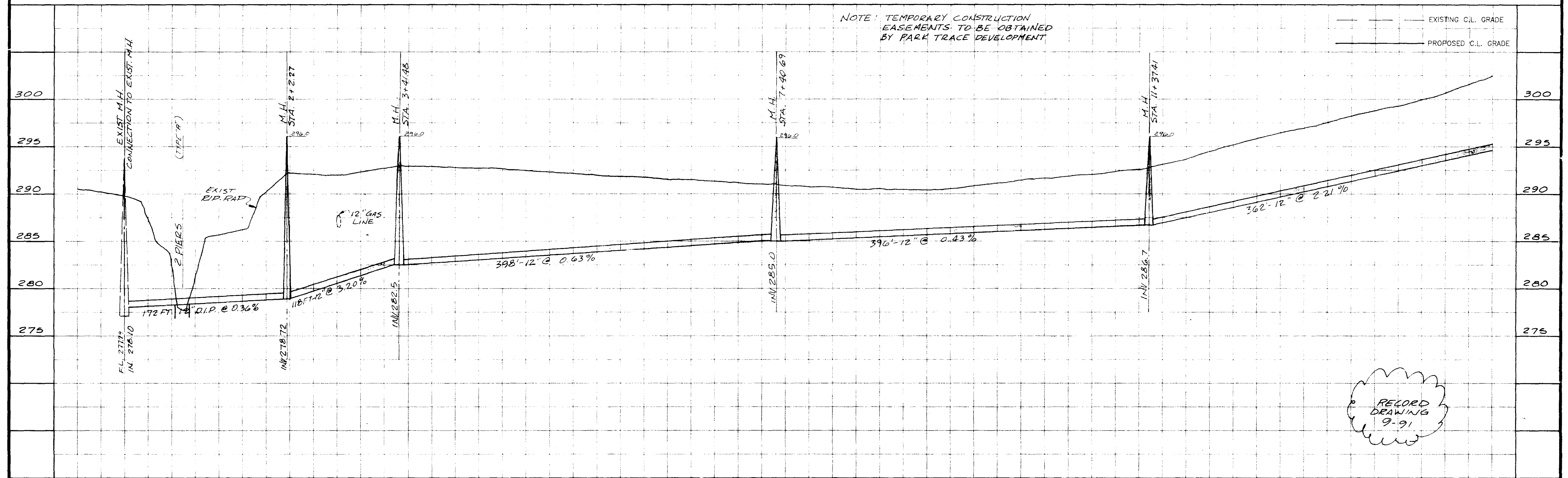
WARNING !!! HIGH PRESSURE
GAS MAIN - CALL MUSTANG
FUEL CO. BEFORE DIGGING

PEARL RIVER VALLEY
WATER SUPPLY DISTRICT

W.W. BAILEY, et al

NOTE: TEMPORARY CONSTRUCTION
EASEMENTS TO BE OBTAINED
BY PARK TRACE DEVELOPMENT

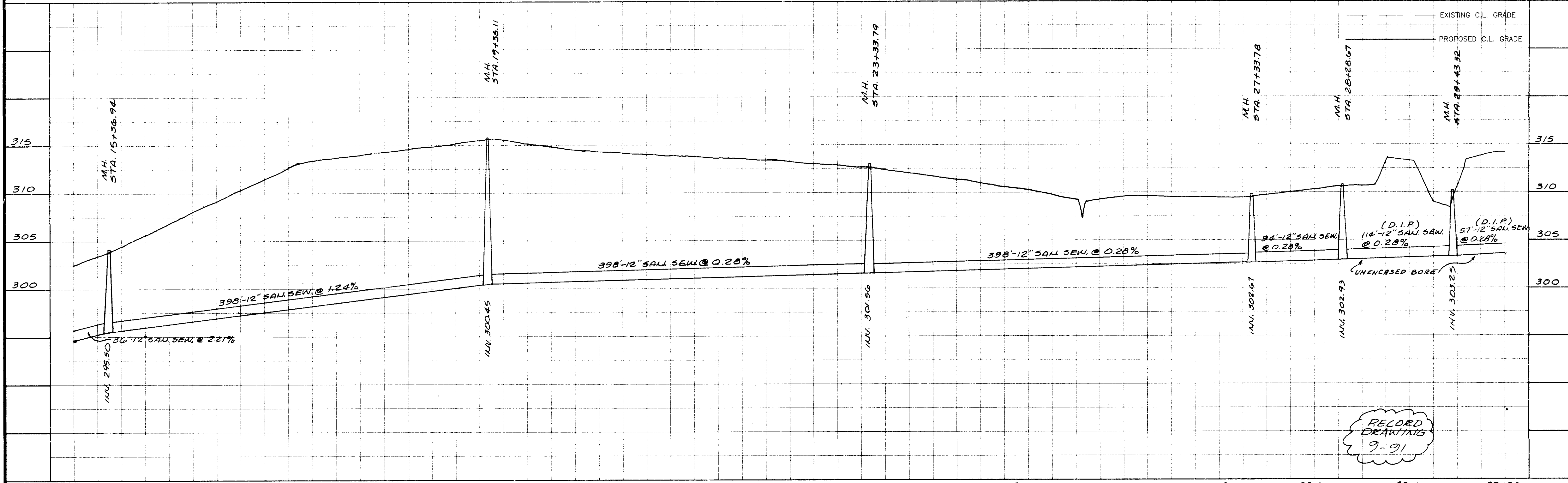
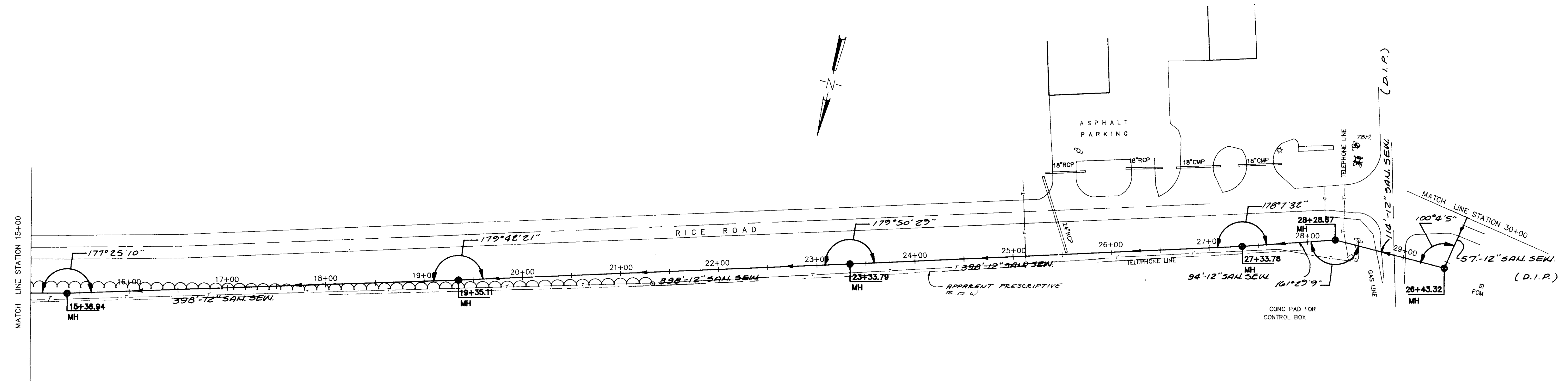
--- EXISTING C.L. GRADE
— PROPOSED C.L. GRADE



RECORD
DRAWING
9-91

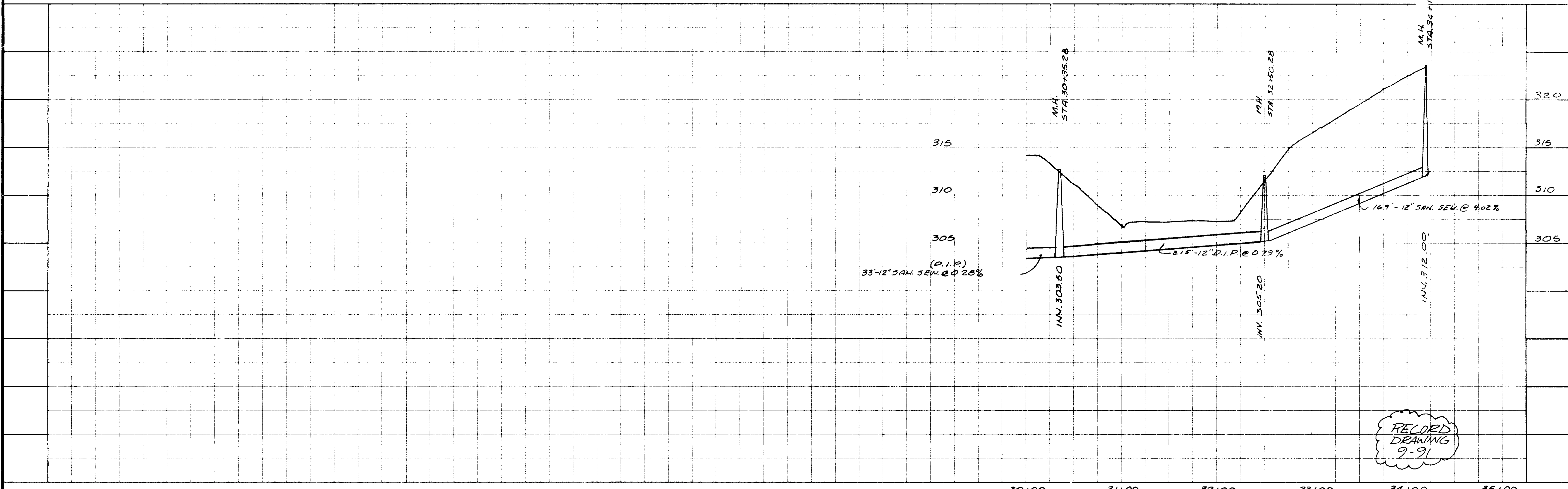
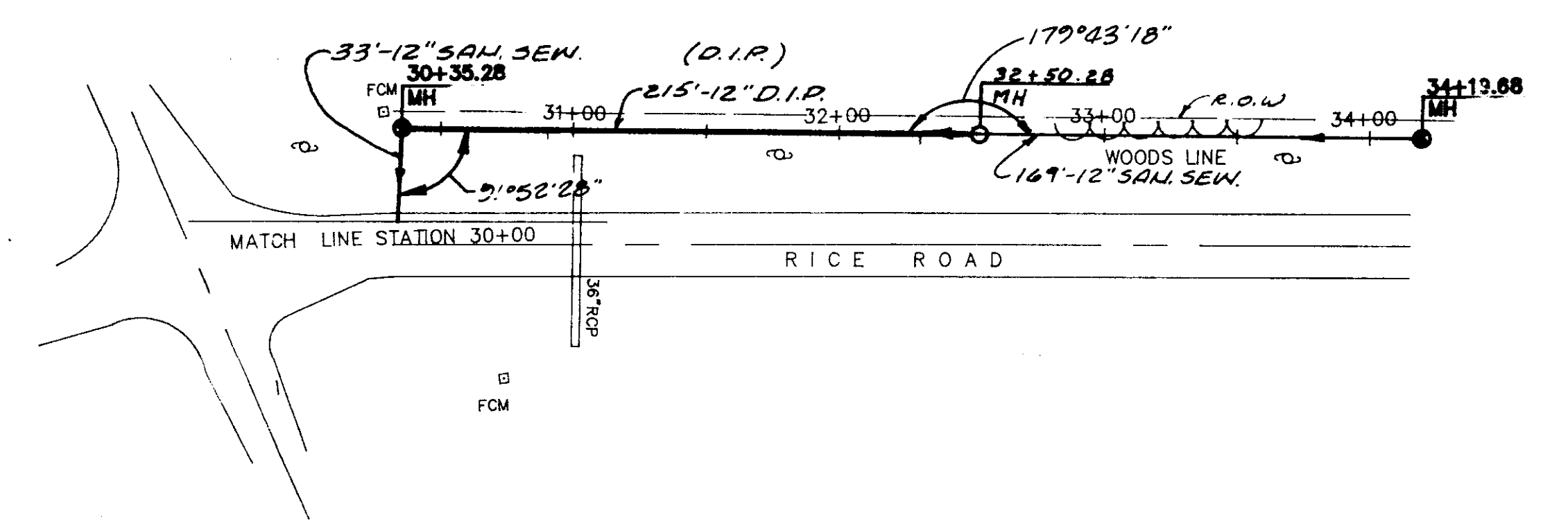
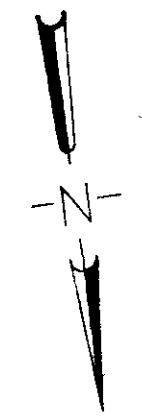
NO.	DATE	REVISIONS	BY	DESIGNED H.J.	DATE 8-17-91	<p>WAGGONER ENGINEERING INC. CONSULTING ENGINEERS JACKSON, MISSISSIPPI</p>	<p>RICE ROAD INTERCEPTOR</p>	<p>ACAD PATH ROUTE C:\P\91087\RICESEW</p>	<p>W.E.I. JOB NO. 91-087</p>	<p>SHEET NO. 2 OF 5</p>
				DRAWN J.P.	SCALE 1"=50' HORT. 1"=5' VERT.					

TBM. ELEV. 316.54
 RR SPIKE IN R.P.
 SE COR. RICE RD. &
 OLD CANTON RD.

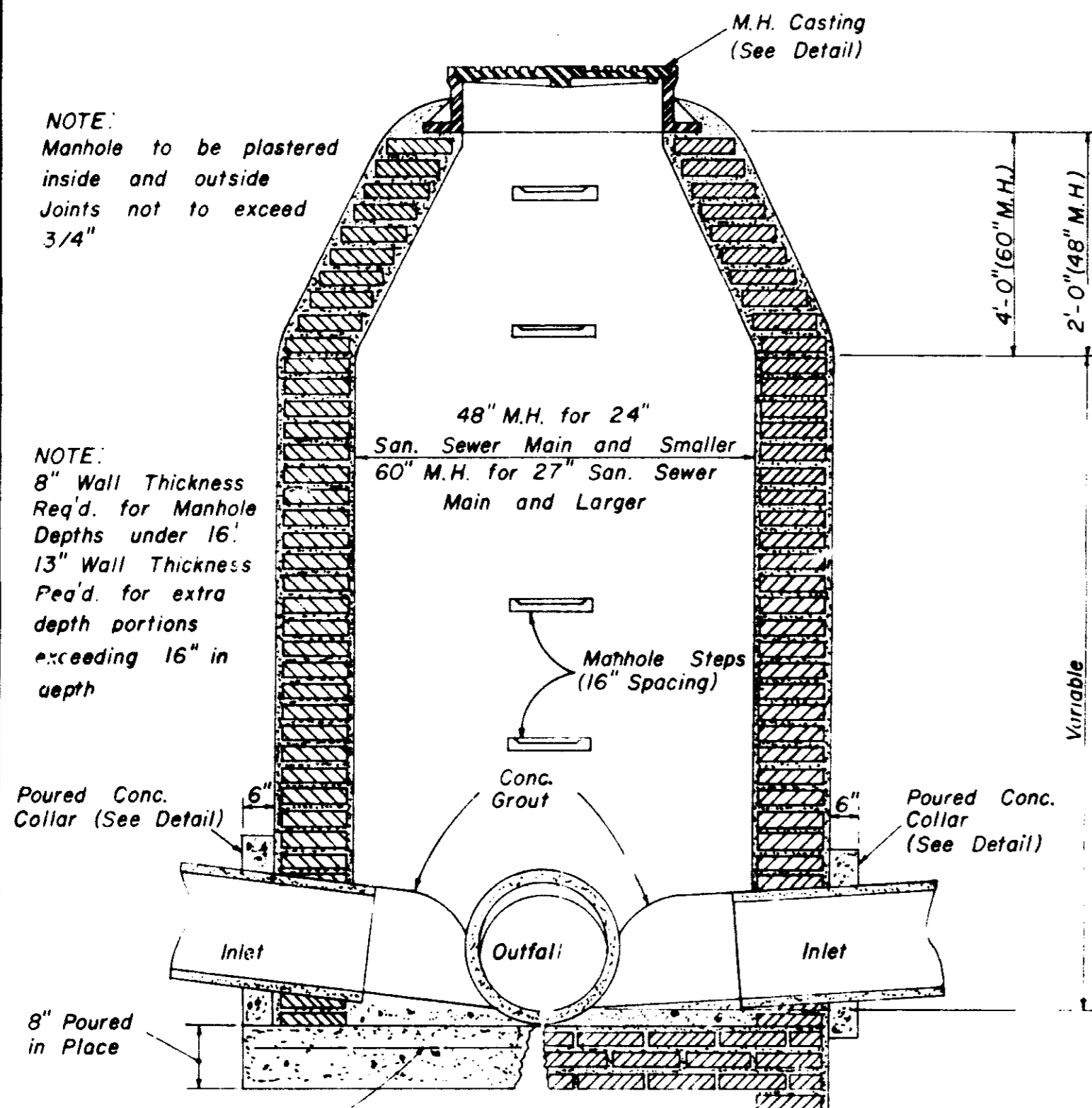


RECORD
 DRAWING
 9-91

15+00	16+00	17+00	18+00	19+00	20+00	21+00	22+00	23+00	24+00	25+00	26+00	27+00	28+00	29+00	30+00
WAGGONER ENGINEERING INC. CONSULTING ENGINEERS JACKSON, MISSISSIPPI															
RICE ROAD INTERCEPTOR															
ACAD PATH ROUTE C:\P\91087\RICESEW															
W.E.I. JOB NO. 91-087 SHEET NO. 3 OF 5															



1. ADD C.I.P., M.H. & CHANGE INVERT OF LAST M.H. ALSO ADD ROW.	DESIGNED H. J.	DATE 8-17-91	WAGGONER ENGINEERING INC. CONSULTING ENGINEERS JACKSON, MISSISSIPPI	RICE ROAD INTERCEPTOR	ACAD PATH ROUTE C:\P\91087\RICESEW
	DRAWN J. P.	SCALE 1" = 50' HORT. 1" = 5' VERT.			W.E.I. JOB NO. 91-087
NO. DATE	REVISIONS	BY			



**SECTION
STANDARD BRICK MANHOLE**

NOTE: Manhole to be plastered inside and outside. Joints not to exceed 3/4"

NOTE: 8" Wall Thickness Req'd. for Manhole Depths under 16'. 13" Wall Thickness Req'd. for extra depth portions exceeding 16" in depth.

48" M.H. for 24" San. Sewer Main and Smaller
60" M.H. for 27" San. Sewer Main and Larger

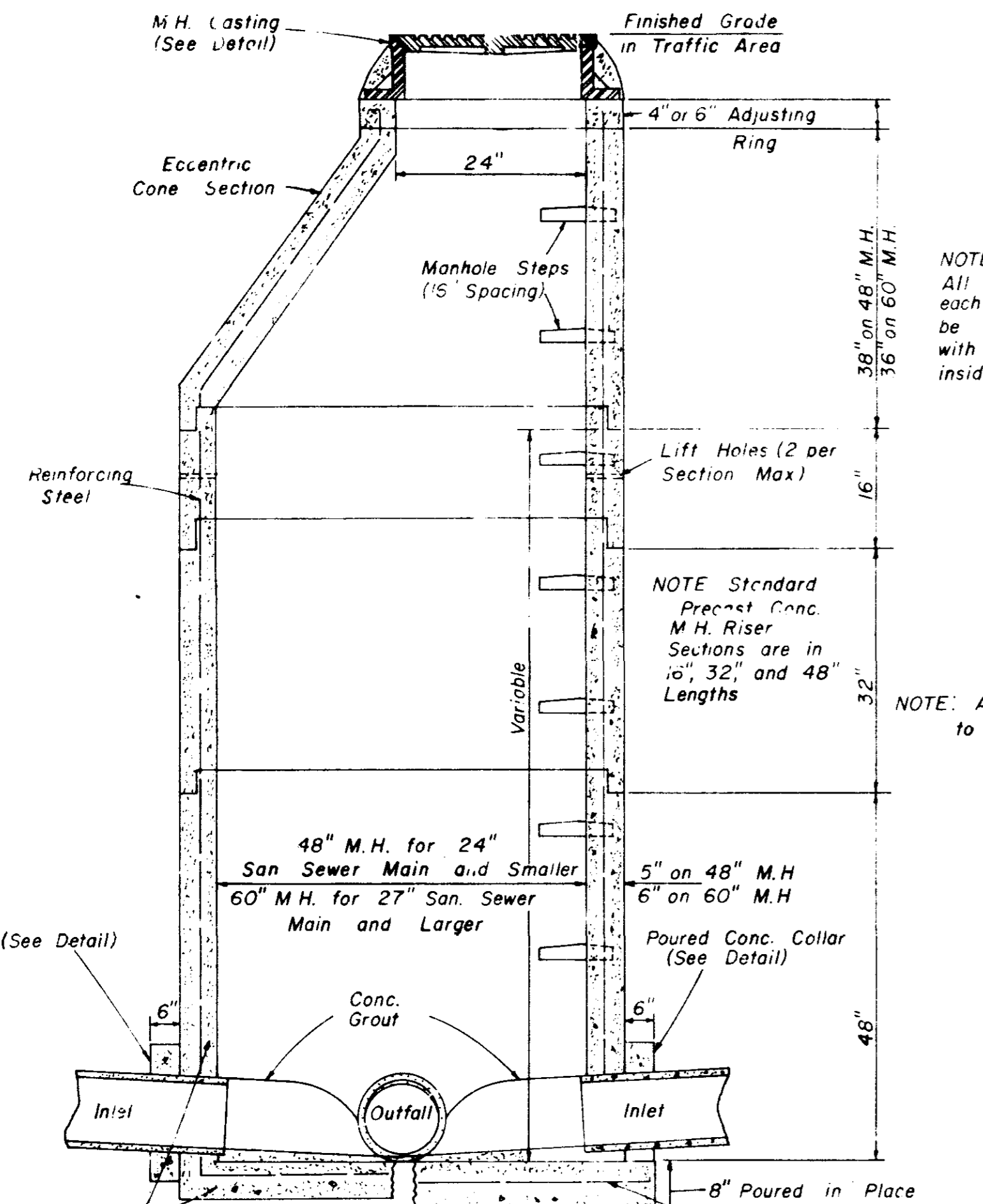
Mahhole Steps (16" Spacing)

Conc. Grout

6" Poured Conc. Collar (See Detail)

8" Poured in Place

No. 4 \emptyset Bars at 10" C.C. on 48" M.H.
No. 4 \emptyset Bars at 9" C.C. on 60" M.H.



**SECTION
PRECAST CONCRETE MANHOLE**

M.H. Casting (See Detail)

Finished Grade in Traffic Area

4" or 6" Adjusting Ring

24"

Manhole Steps (15 Spacing)

Reinforcing Steel

Lift Holes (2 per Section Max)

NOTE: Standard Precast Conc. M.H. Riser Sections are in 10", 32" and 48" Lengths

48" M.H. for 24" San. Sewer Main and Smaller
60" M.H. for 27" San. Sewer Main and Larger

5" on 48" M.H.
6" on 60" M.H.

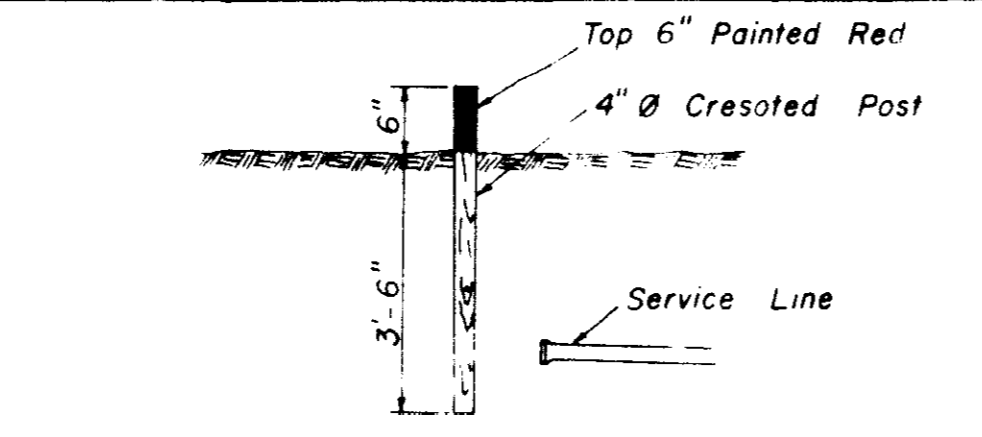
Poured Conc. Collar (See Detail)

Conc. Grout

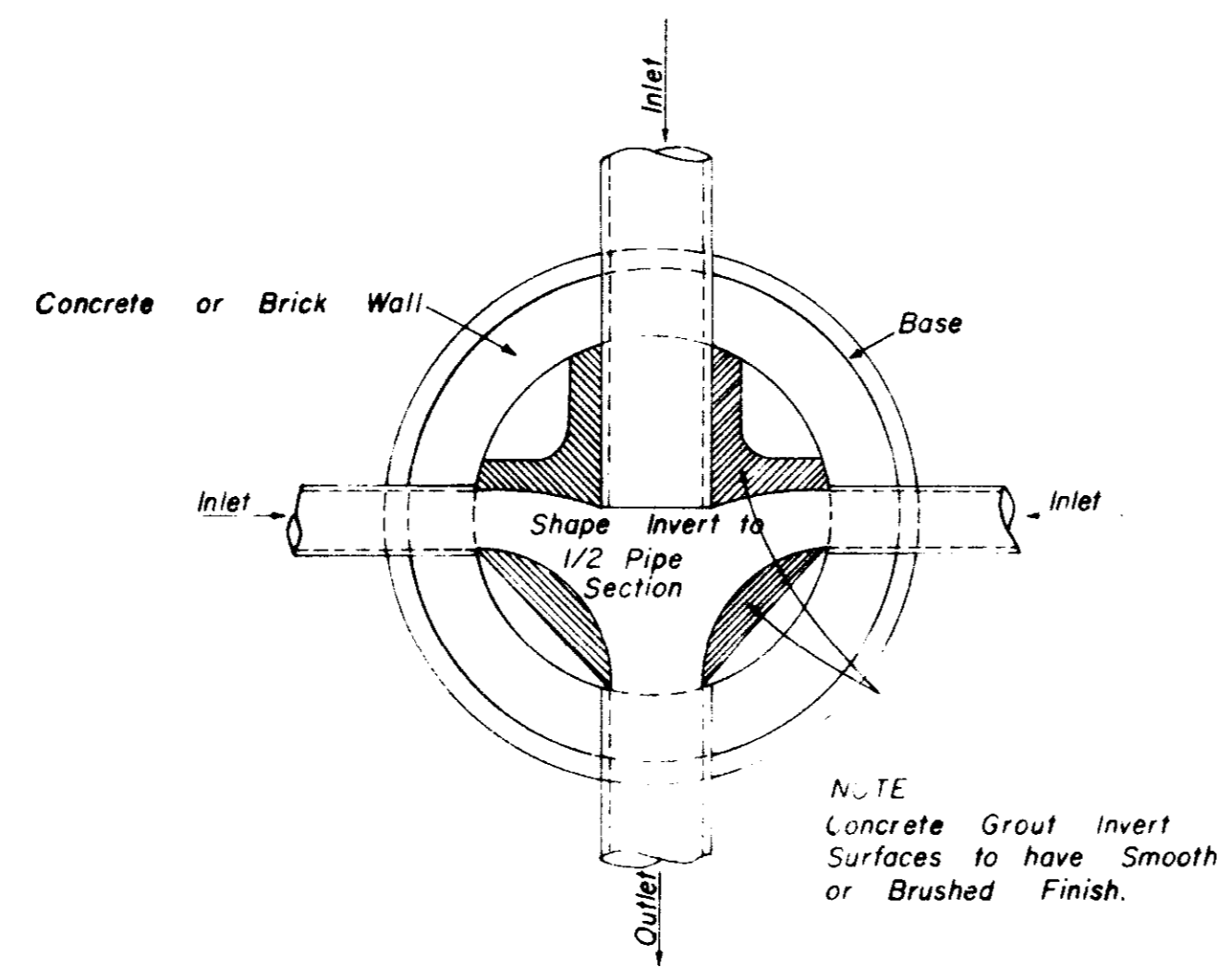
8" Poured in Place

Precast Base Unit

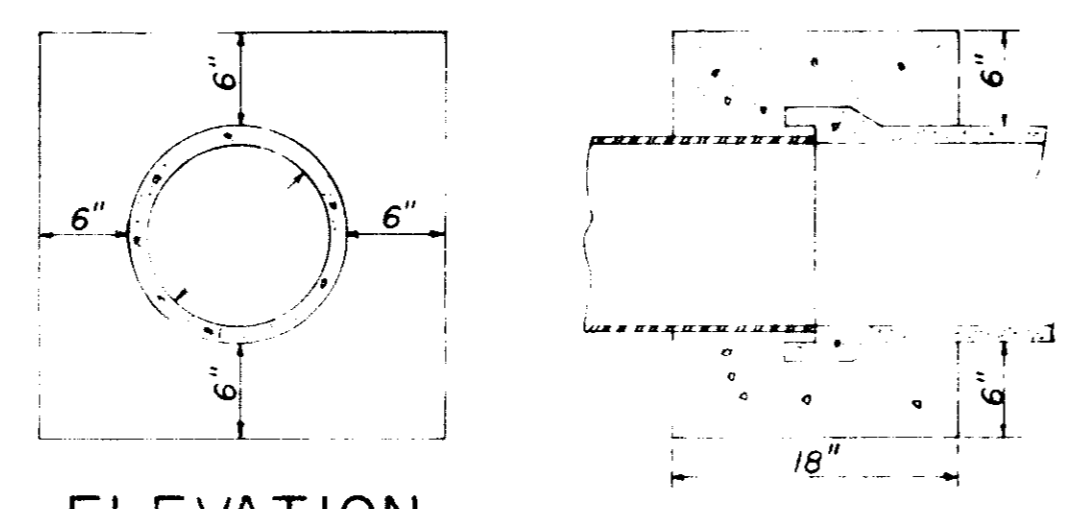
No. 4 \emptyset Bars at 10" C.C. on 48" M.H.
No. 4 \emptyset Bars at 9" C.C. on 60" M.H.



SEWER SERVICE MARKER



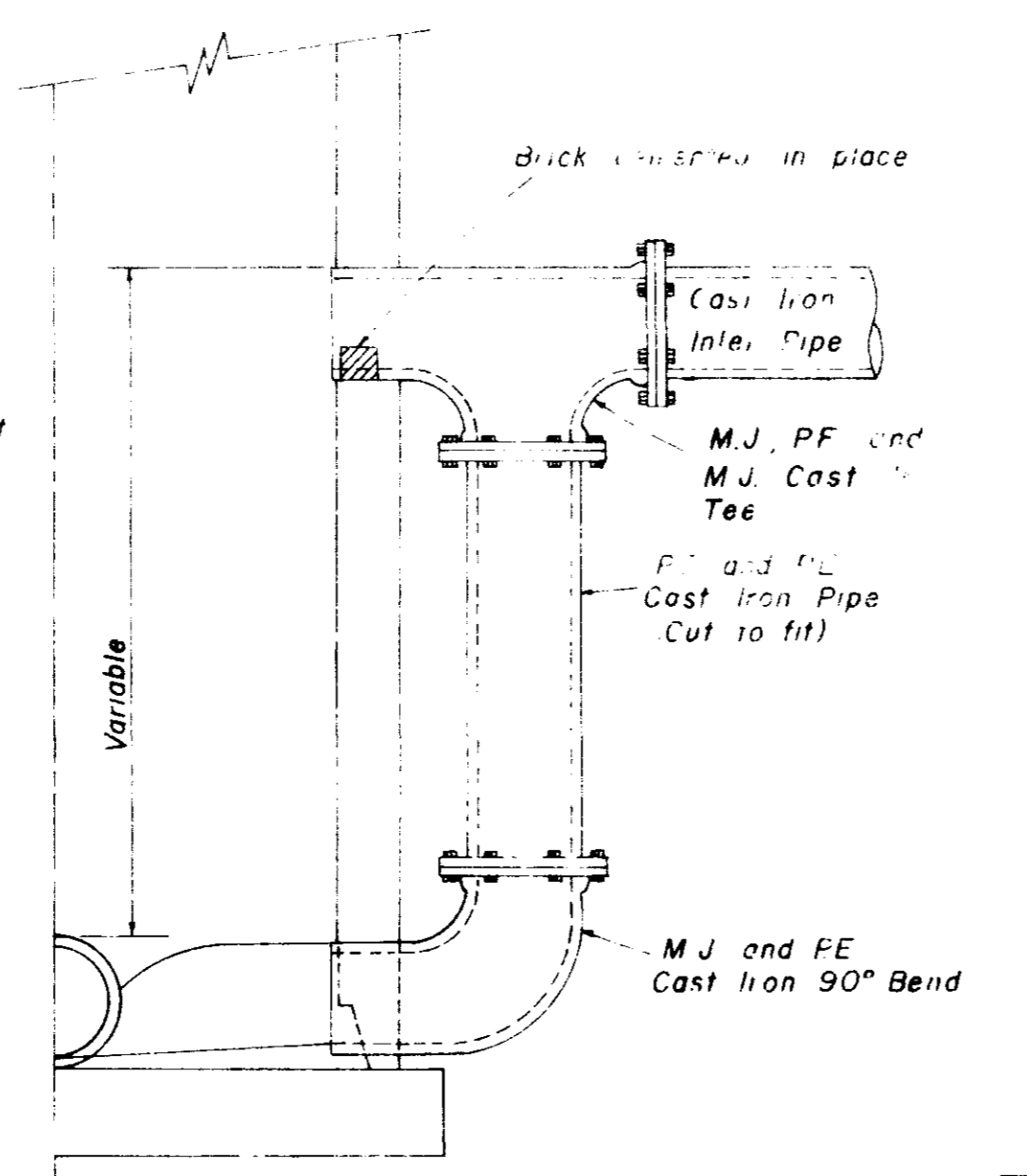
**PLAN OF MANHOLE
FLOW CHANNELS**



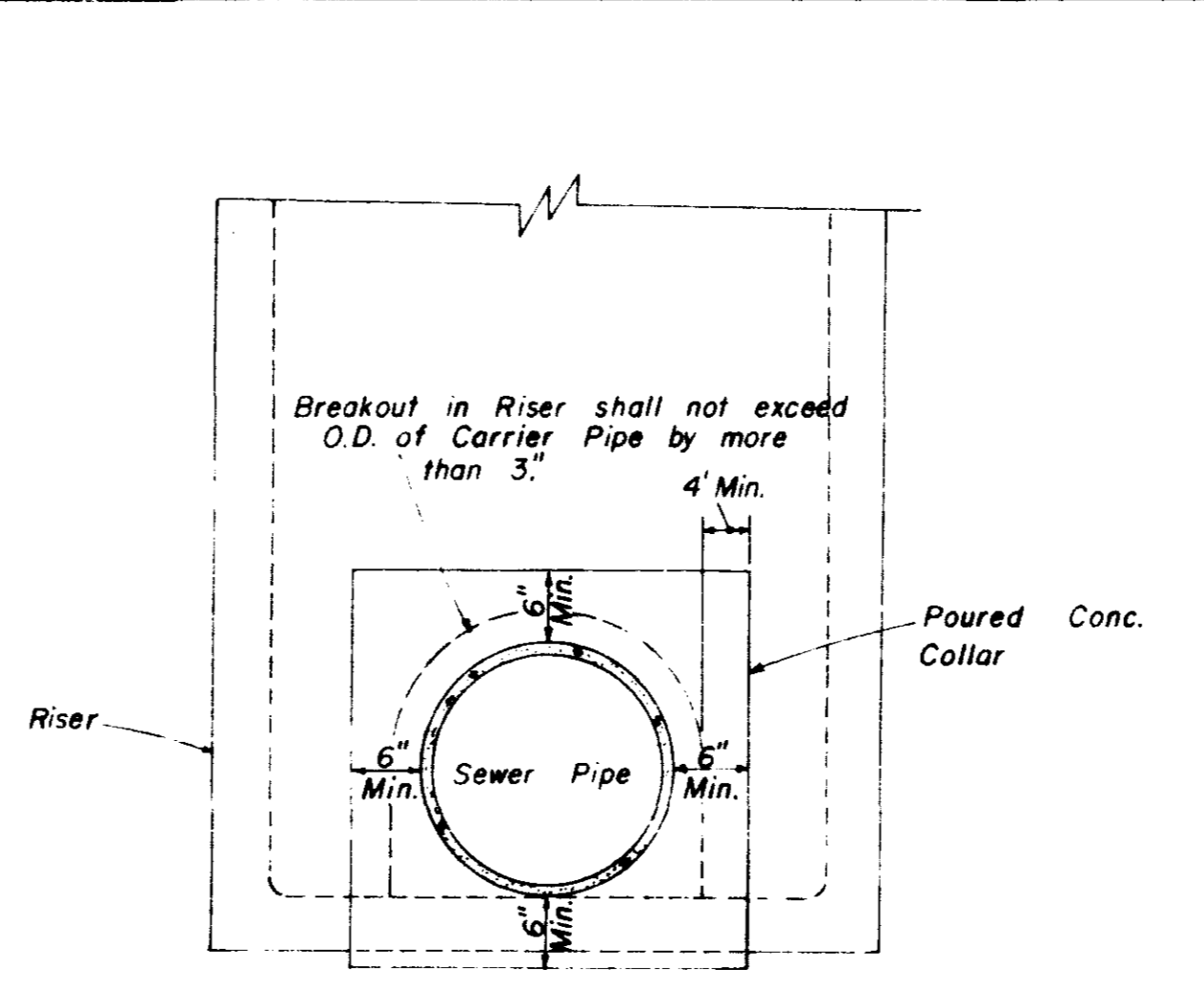
**ELEVATION SECTION
CONCRETE COLLAR DETAILS**

NOTE: All Lift Holes on each Section shall be sealed Watertight with non-shrink Grout inside and outside

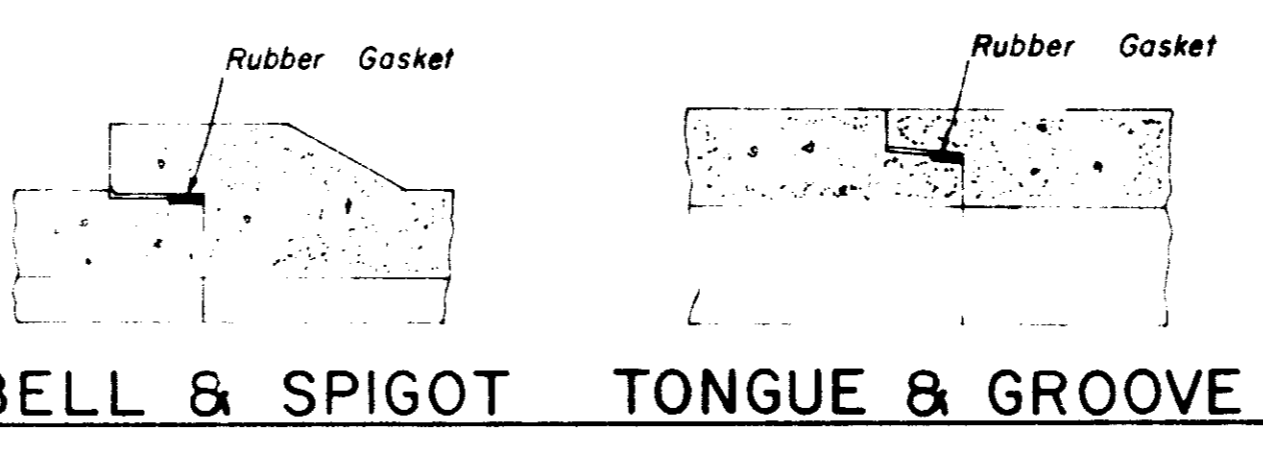
NOTE: All Manhole Joints to be Rubber Gasket



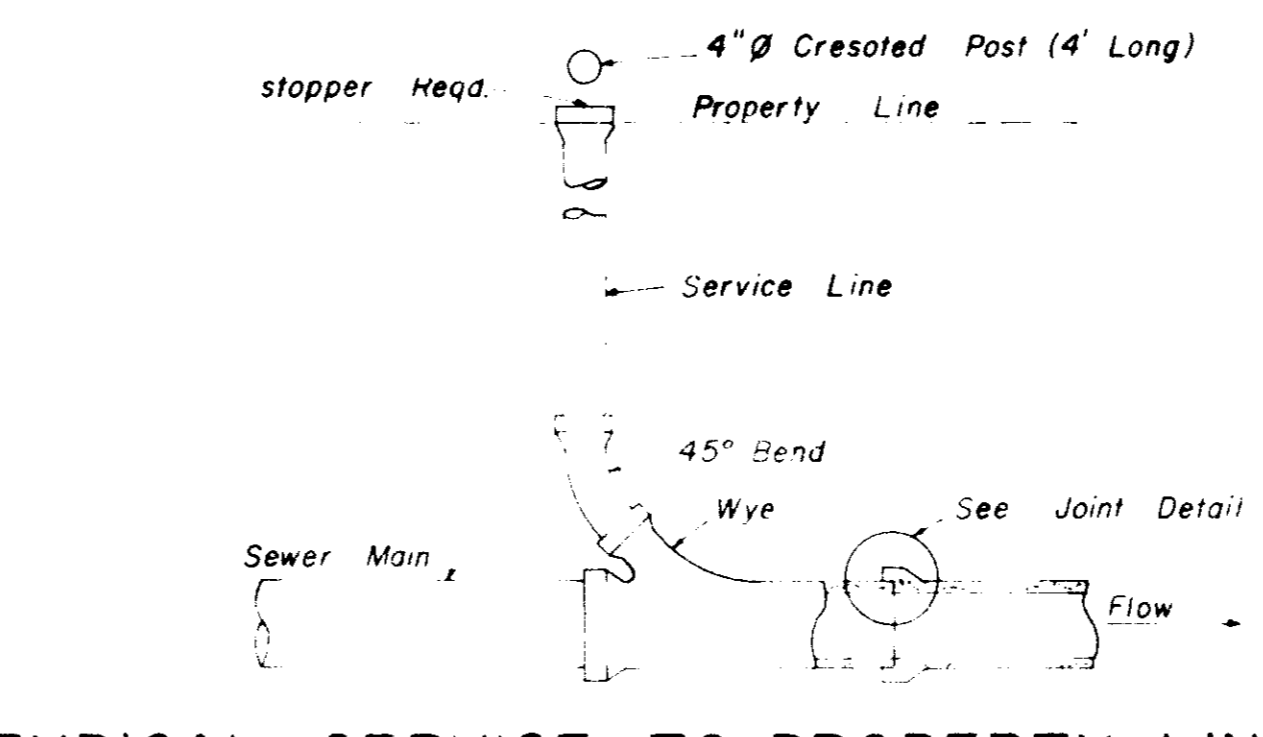
**HALF SECTION
MANHOLE WITH DROP CONNECTION**



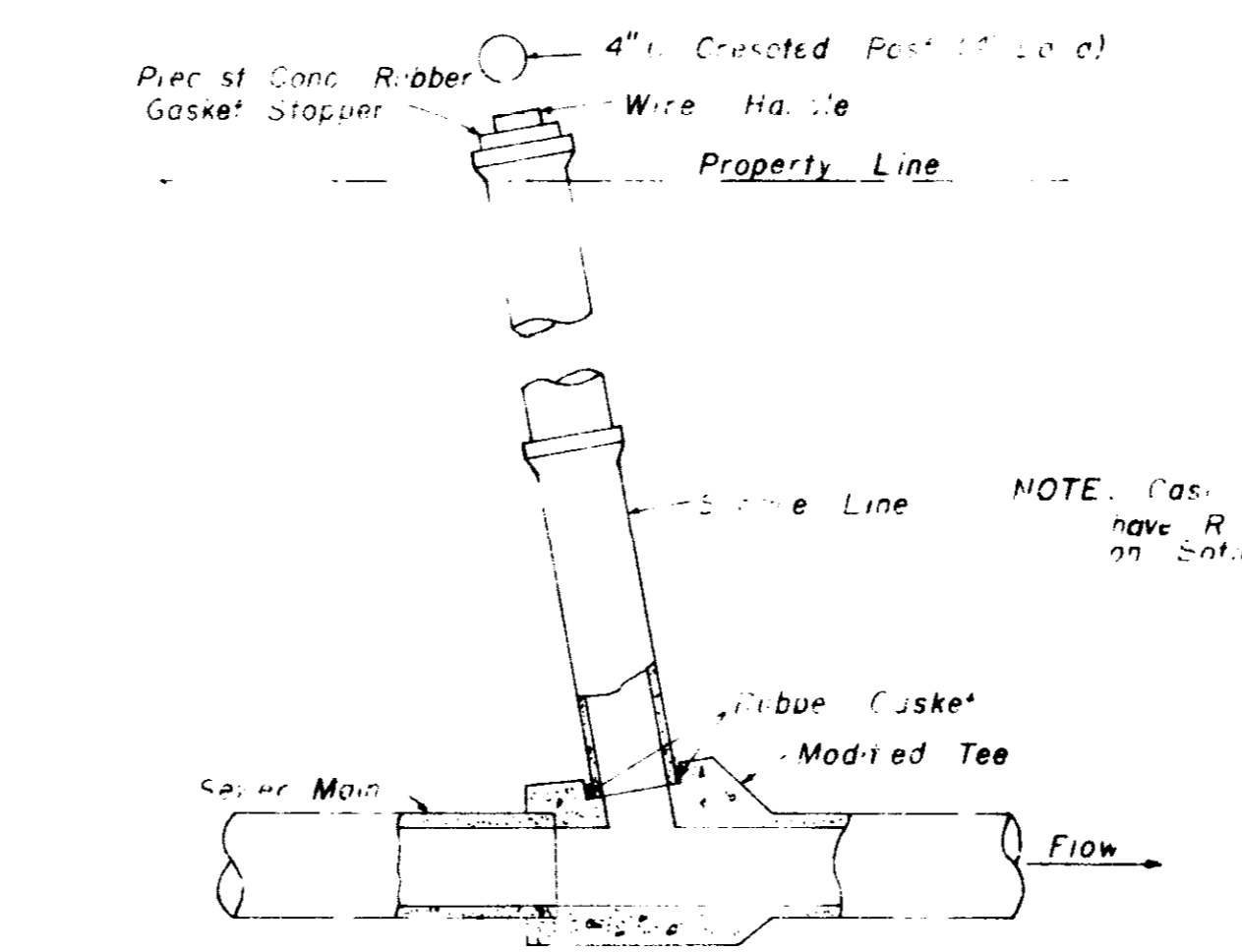
**ELEVATION
CONCRETE COLLAR AT
MANHOLE CONNECTION**



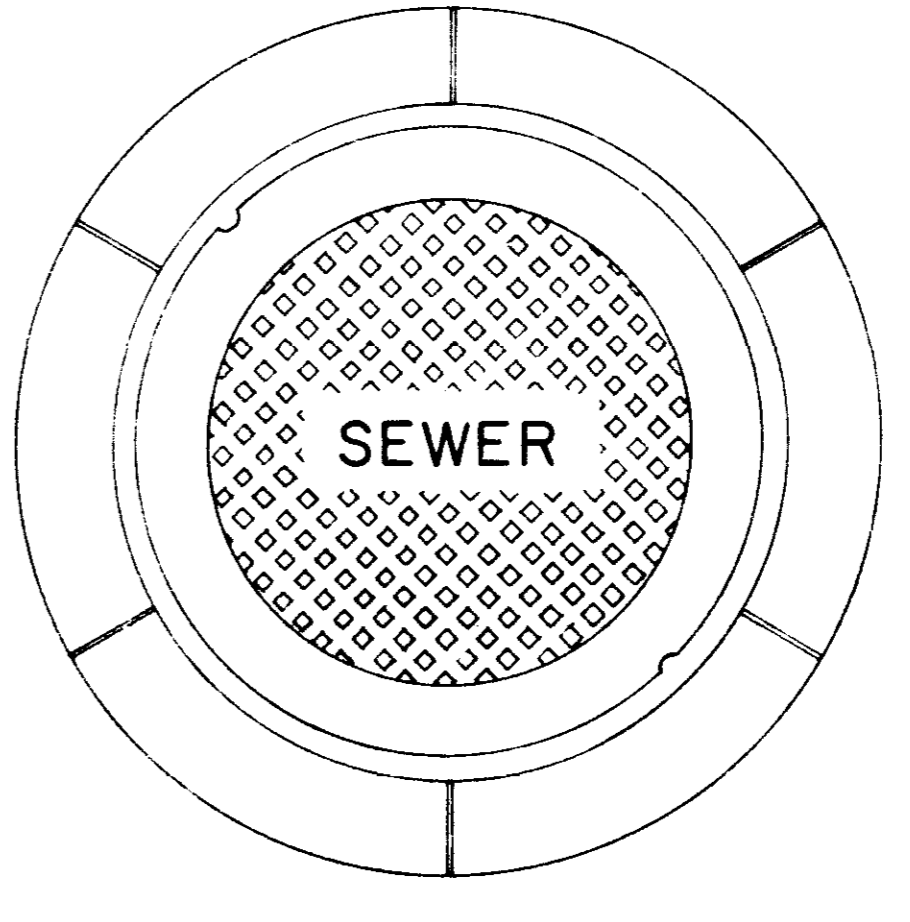
**BELL & SPIGOT TONGUE & GROOVE
JOINT DETAILS**



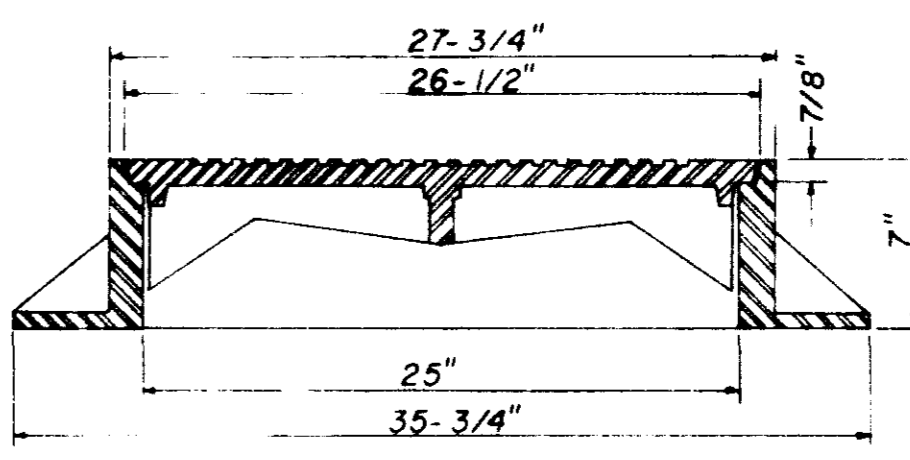
**TYPICAL SERVICE TO PROPERTY LINE
WITH WYE JOINT**



**TYPICAL SERVICE TO PROPERTY LINE
WITH MODIFIED TEE JOINT**

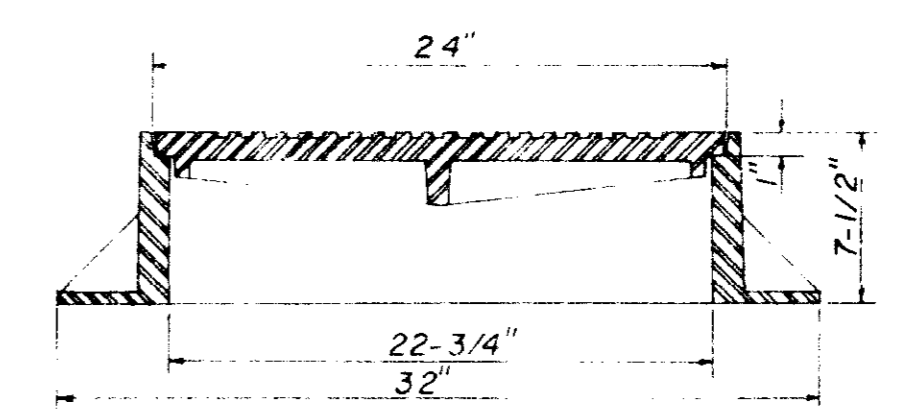


**PLAN
MANHOLE CASTING**



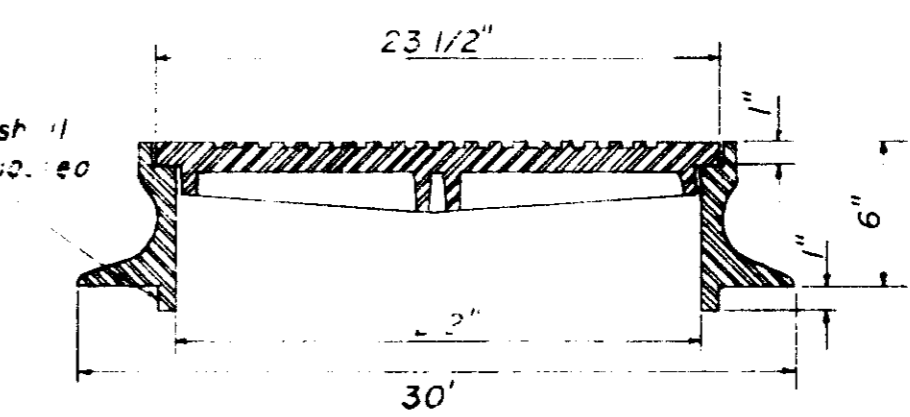
**SECTION
TYPE "A" MANHOLE CASTING**

NOTE: 1. Use Type "A" Manhole Casting in Street R.O.W.
2. Use Harper No. 2, City of Jackson Standard (420 lbs.) or Vulcan No. VM-15, City of Jackson Standard (420 lbs.)



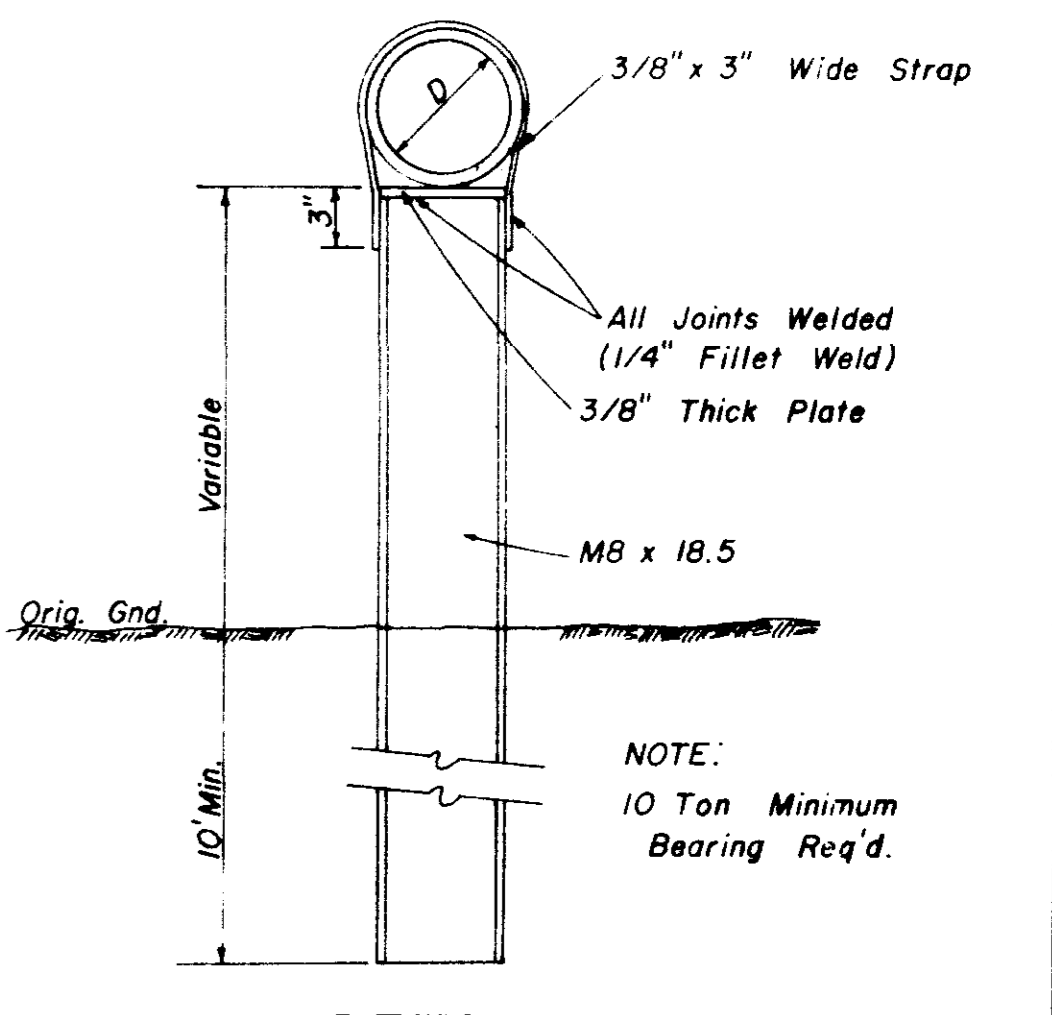
**SECTION
TYPE "B" MANHOLE CASTING**

NOTE: 1. Use Type "B" Manhole Casting for any Manhole not in a Street R.O.W.
2. Use Harper No. 1 (M.S.P.E. Standard) Light Weight (330 lbs.) or Vulcan No. VM-17 (300 lbs.) or Opelika Foundry No. C-2-1 (325 lbs.)

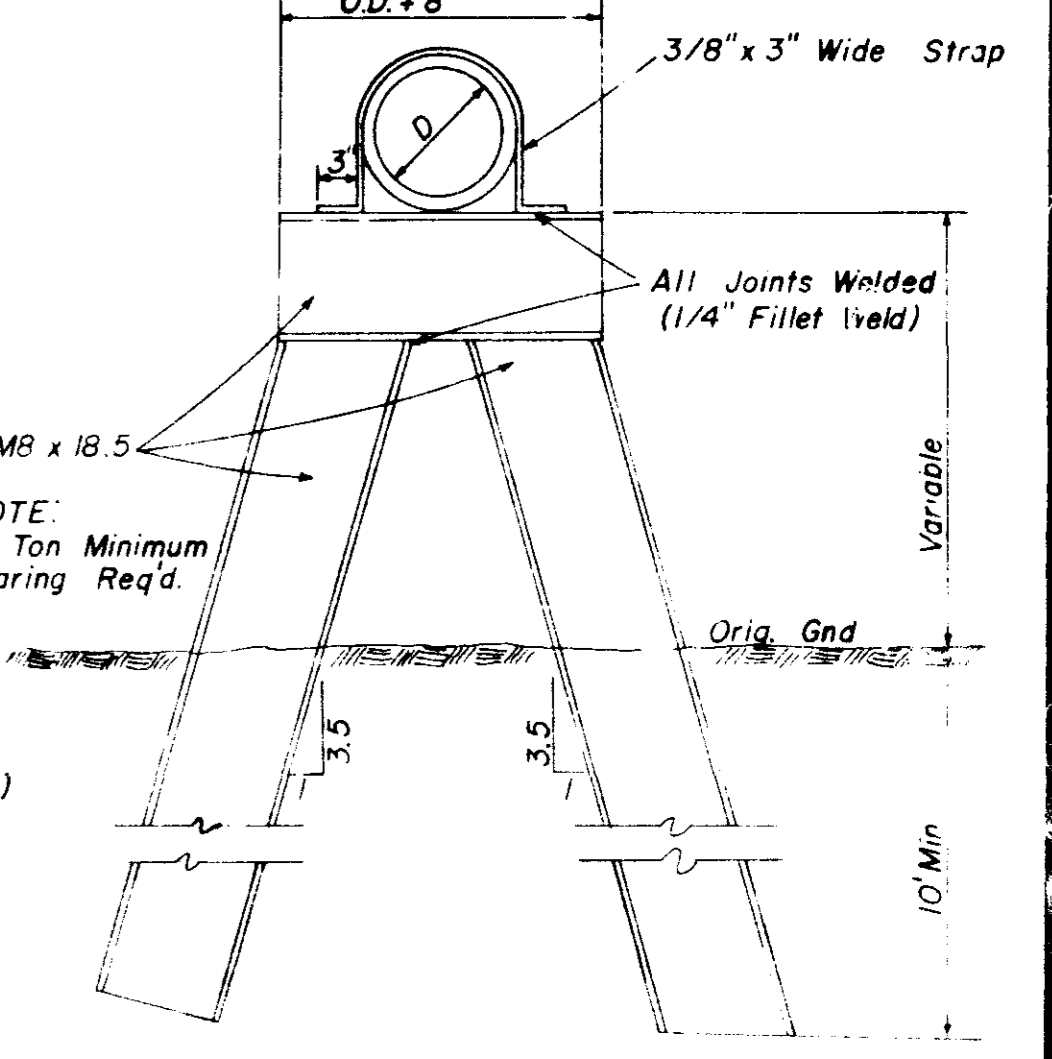


**SECTION
TYPE "C" MANHOLE CASTING**

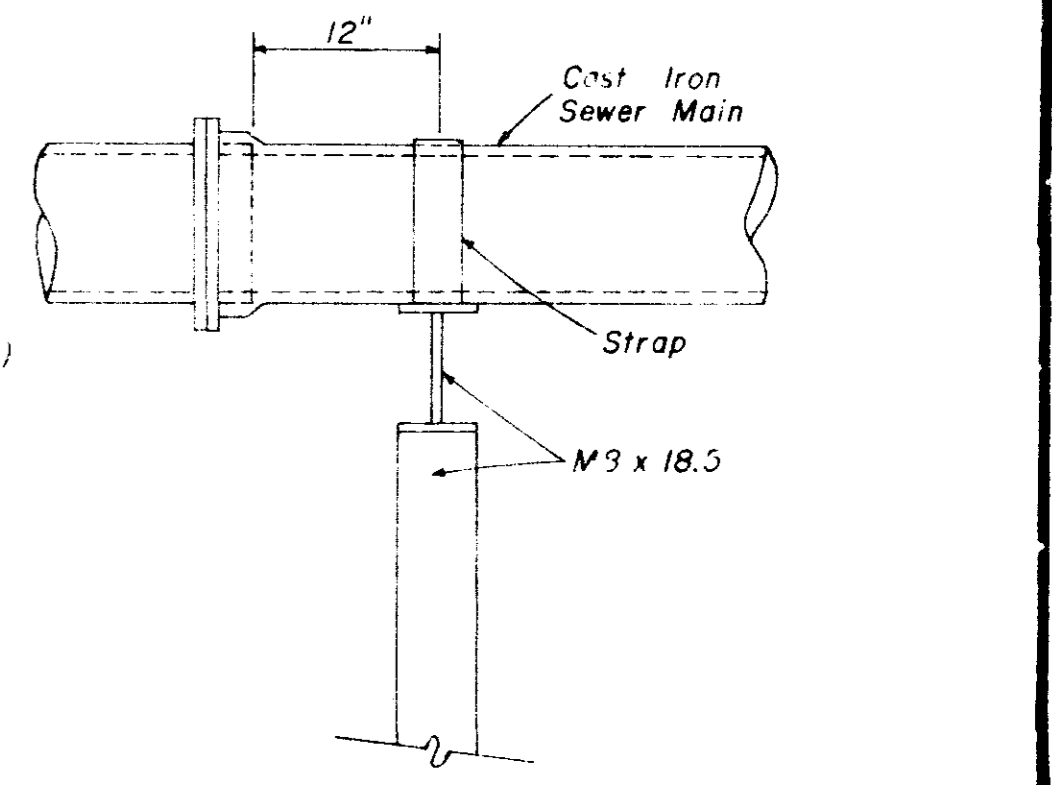
NOTE: 1. Use Type "C" Manhole Casting for Precast Manhole not in a Street R.O.W.
2. Use Harper No. 8 (330 lbs.) or Neenan No. R-1779 (300 lbs.) or Vulcan No VM-7 (330 lbs.)



**DETAIL
TYPE "A" PIER**



**DETAIL
TYPE "B" PIER**



**SIDE ELEVATION
TYPE "B" PIER**

RECORD DRAWING 9-91

RICE ROAD SEWER

**SANITARY SEWER
STANDARD DETAILS**

WAGGONER ENGINEERING INC.
Consulting Engineers — Jackson / Brandon, Ms.

DRAWN BY: T.D.L.	DATE: 3-20-87
CHECKED BY: J.A.W.	SCALE: AS SHOWN

5 of 5

WEI # 91-087