

RICE RD. WIDENING AND OVERLAY  
FROM  
WALNUT ST. TO PEAR ORCHARD RD.

MAYOR:

GENE F. MCGEE

ALDERMEN:

ANN HURD

LISA WALTERS

CAROLE DAVIS

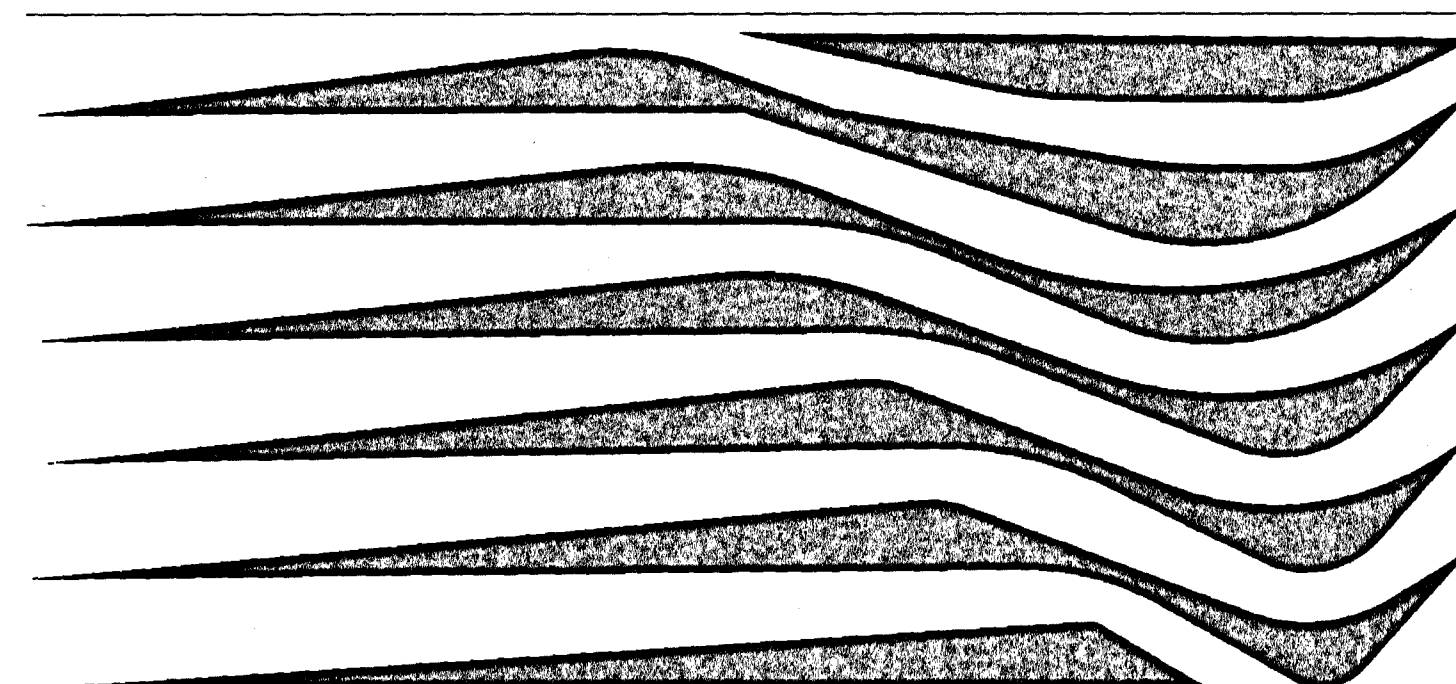
LARRY ROBERTS

SCOTT JONES

LINDA TRUNZLER

GERALD STEEN

THE CITY OF



RIDGELAND

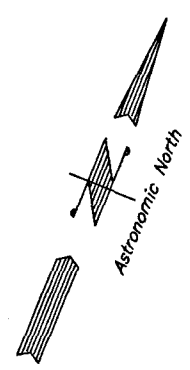
CITY STAFF:

PUBLIC WORKS  
DIRECTOR:

SAM VINSON, P.E.

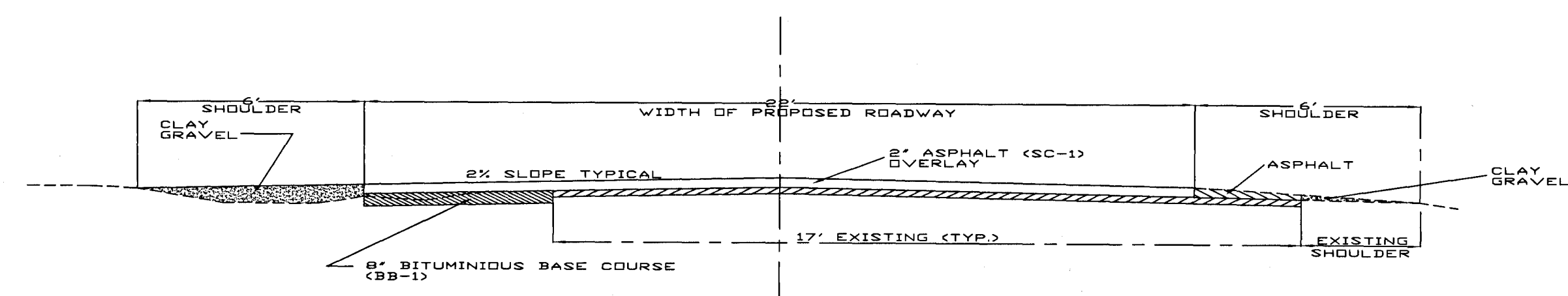
FEBRUARY 2000

PWP-1842



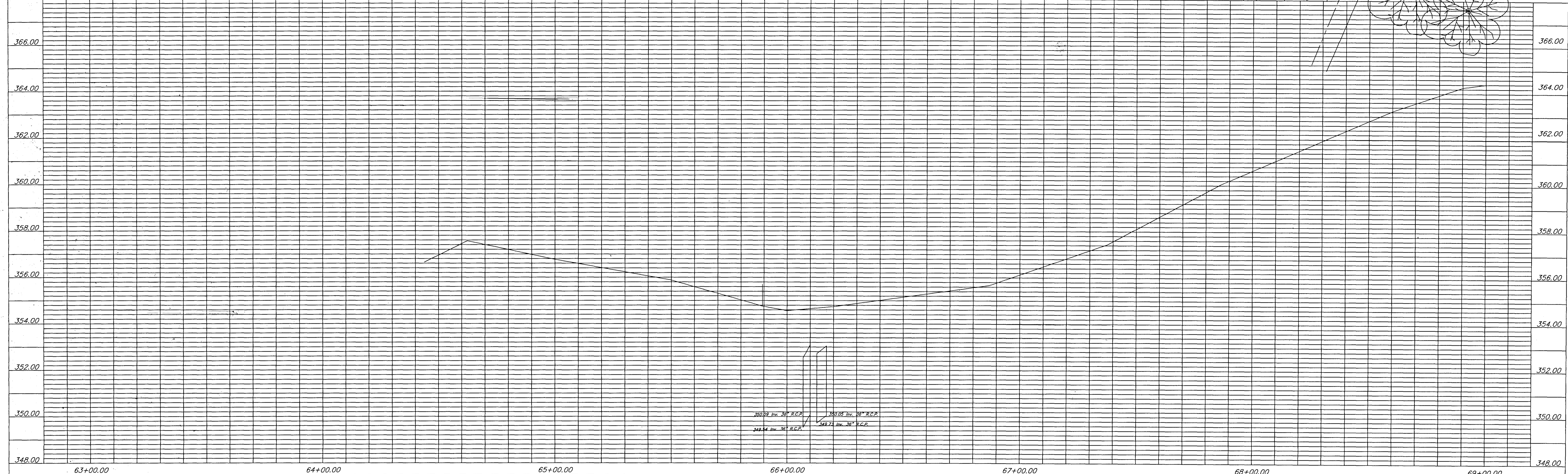
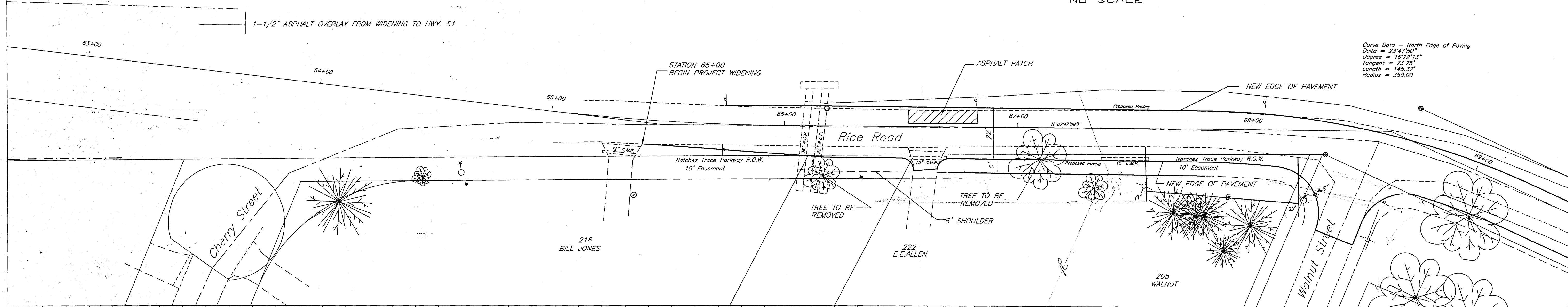
Legend:  
 F.I.P. = Found Iron Pin  
 S.I.P. = Set Iron Pin - No. 4 Bar @ 1' - 6" Minimum  
 Existing Fence = - - - - -  
 Power Pole = +  
 Light Pole = ∞  
 Water Meter = • W.M.  
 Concrete Monument = •  
 Telephone Pedestal = • Tel. Ped.  
 Cable Pedestal = • T.V. Cable  
 Sanitary Sewer Manhole = • S.S.M.H.  
 Section Line = - - - - -  
 Water Valve = W.V.  
 Natural Gas Valve = N.G.V.  
 P.K. = Parker Kalon Nail (Fastner) Found (Fnd. P.K.) or Set (Set P.K.)  
 U. S. Mail Box =

Curve Data  
 Delta = 06°34'46"  
 Degree = 06°00'00"  
 Tangent = 54.89'  
 Length = 109.63'  
 Radius = 954.92'



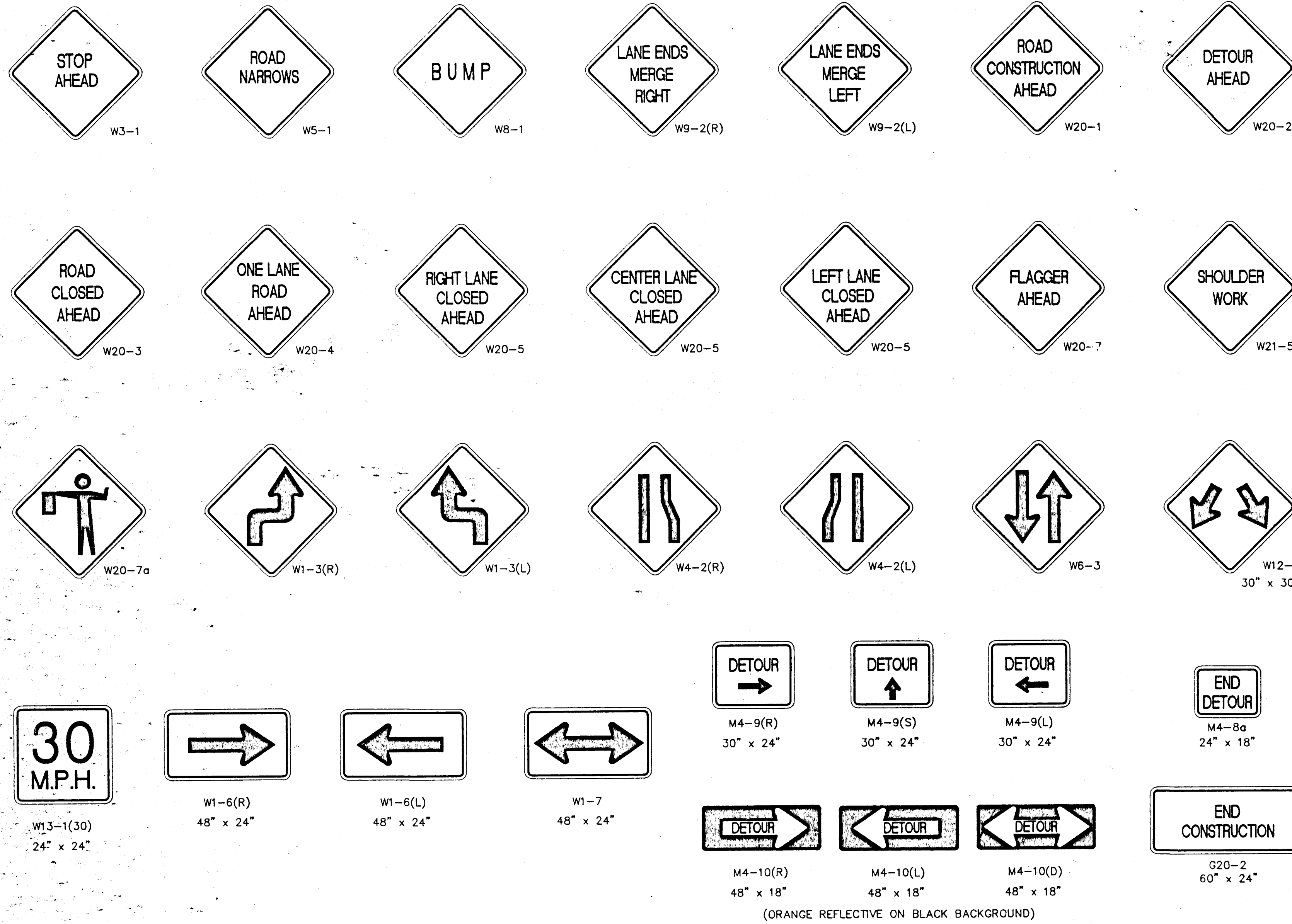
TYPICAL ROADWAY SECTION  
 NO SCALE

Curve Data - North Edge of Paving  
 Delta = 23°47'50"  
 Degree = 16°22'13"  
 Tangent = 73.75'  
 Length = 145.37'  
 Radius = 350.00'

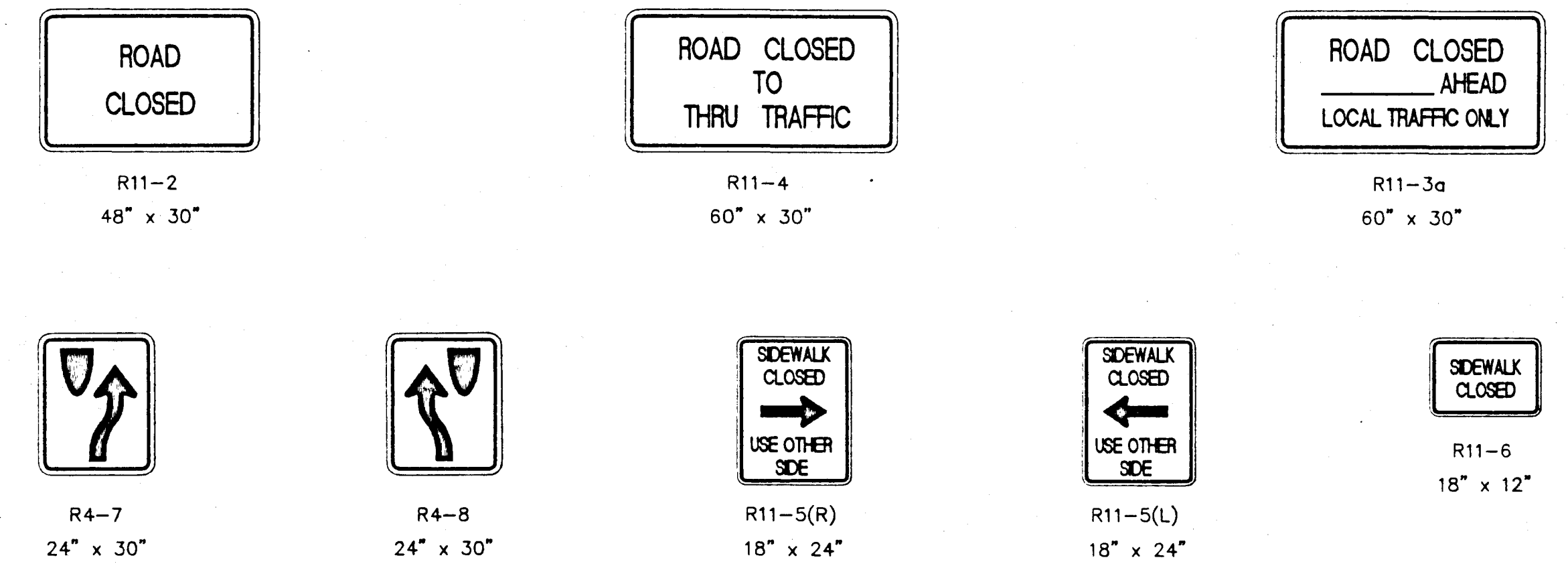


RICE ROAD Sta. 63+00 to Sta. 69+00

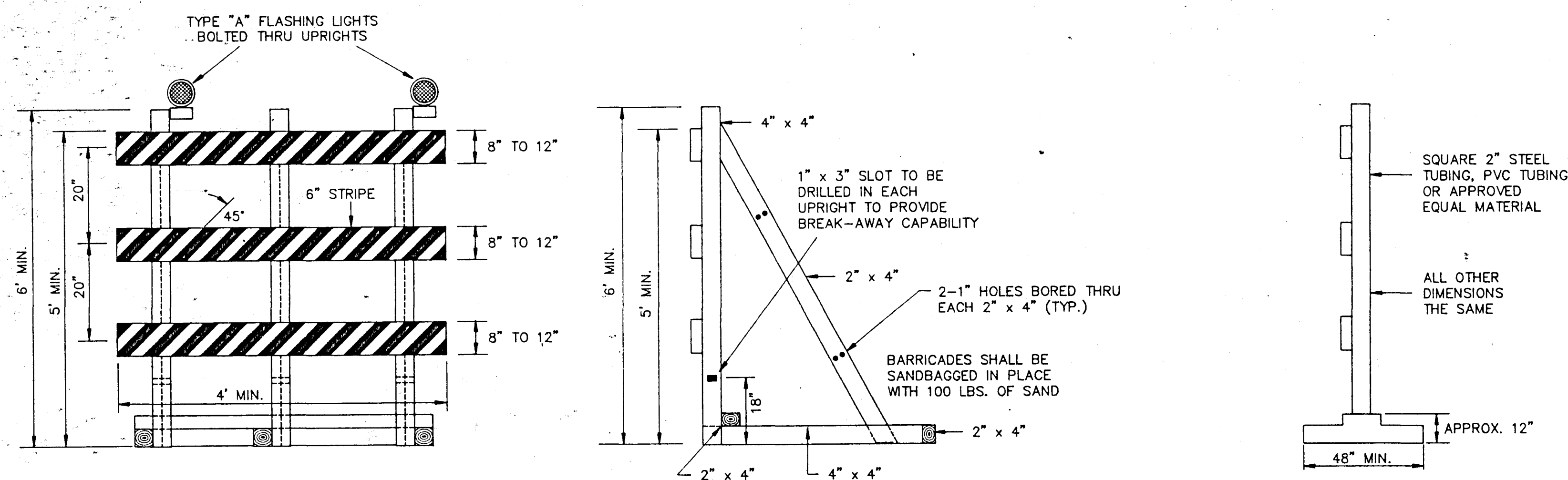
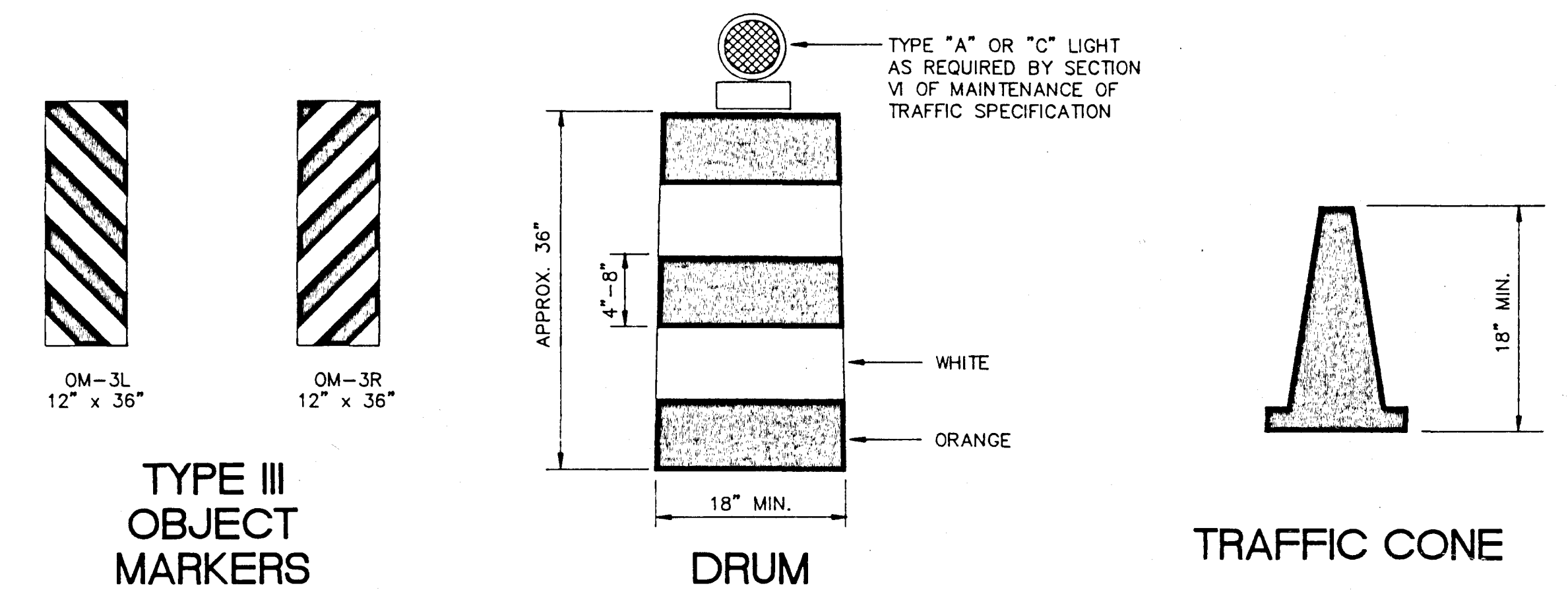
BLACK MESSAGE ON ORANGE REFLECTIVE BACKGROUND  
MINIMUM SIZE 48" x 48", UNLESS OTHERWISE NOTED



BLACK MESSAGE ON WHITE REFLECTIVE BACKGROUND



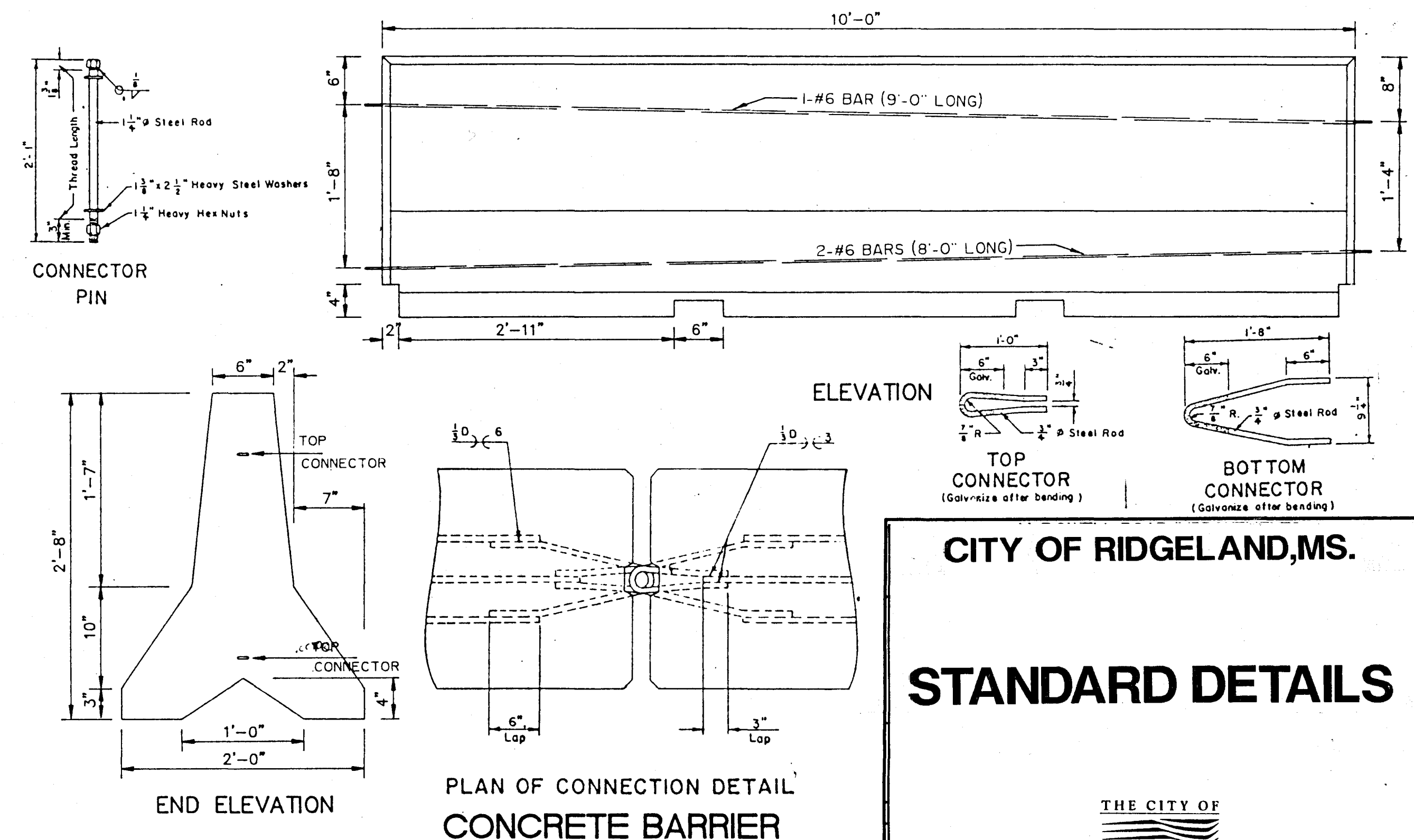
REFLECTORIZED ORANGE AND WHITE



TYPE III BARRICADE

ALTERNATE TYPE III BARRICADE

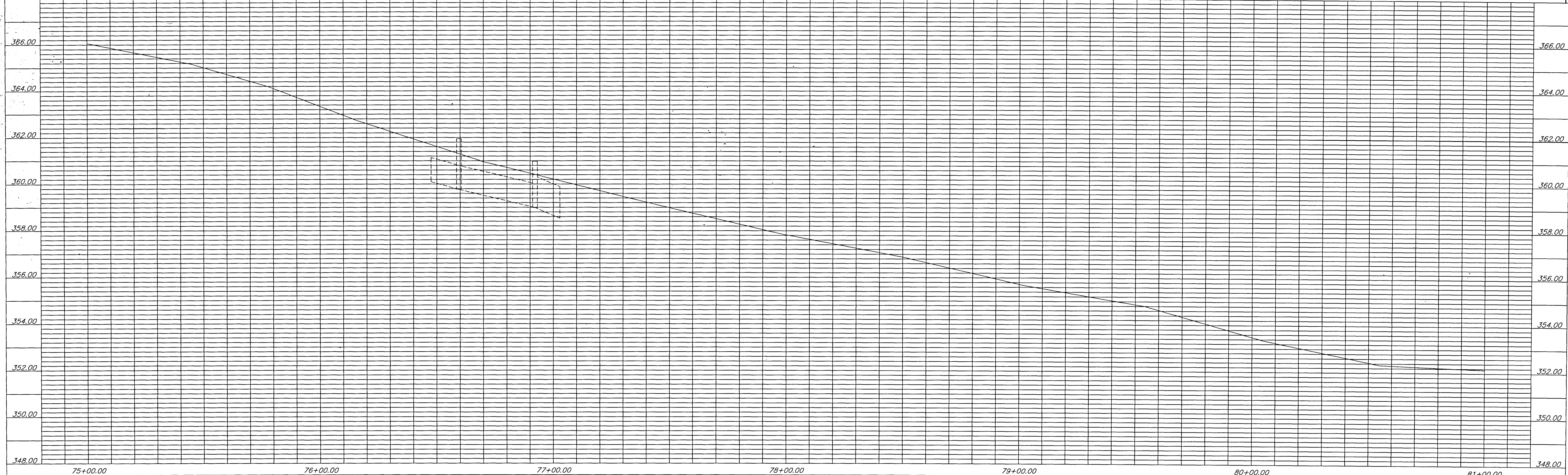
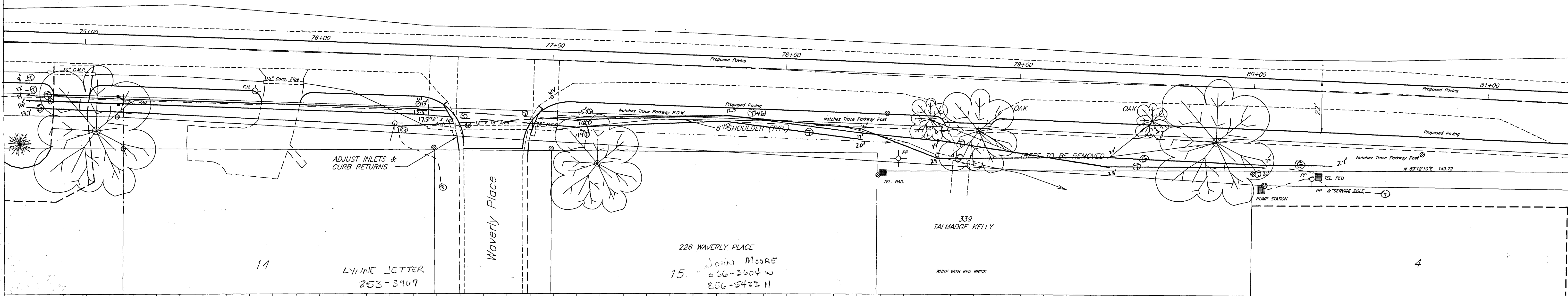
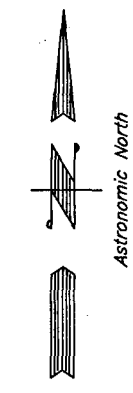
NOTE : ALL SIGN, BARRICADE & DRUM SHEETING SHALL BE ENCAPSULATED LENS, REFLECTIVE SHEETING FOR CONSTRUCTION PURPOSES.



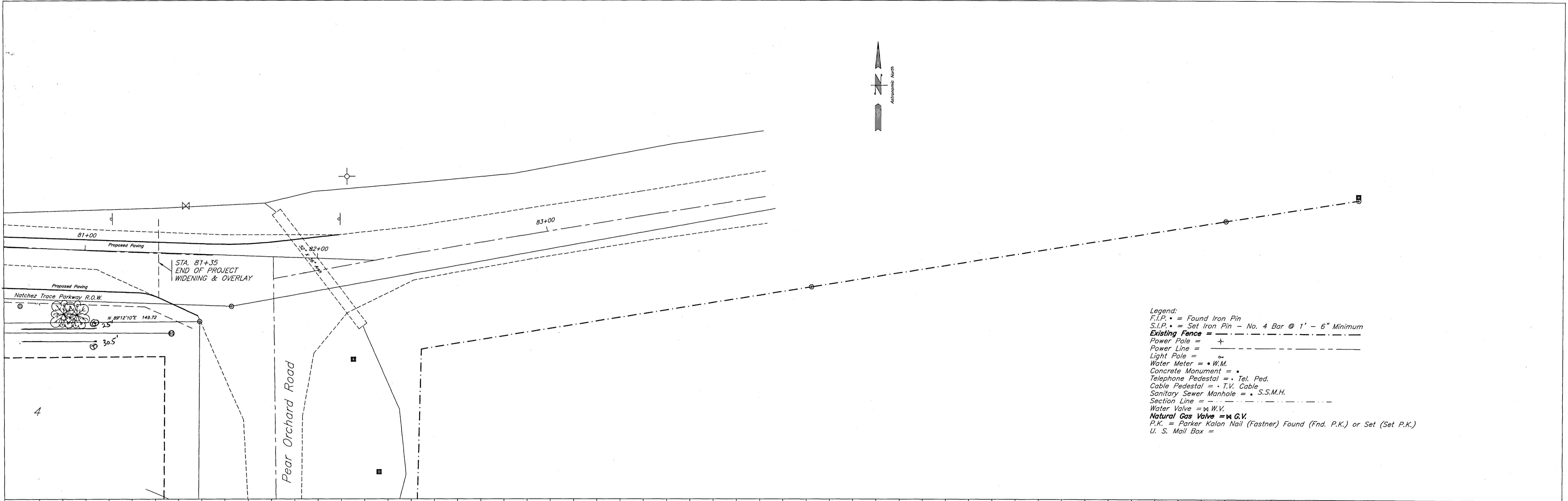
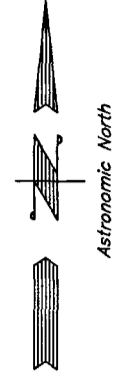
CITY OF RIDGELAND, MS.  
**STANDARD DETAILS**



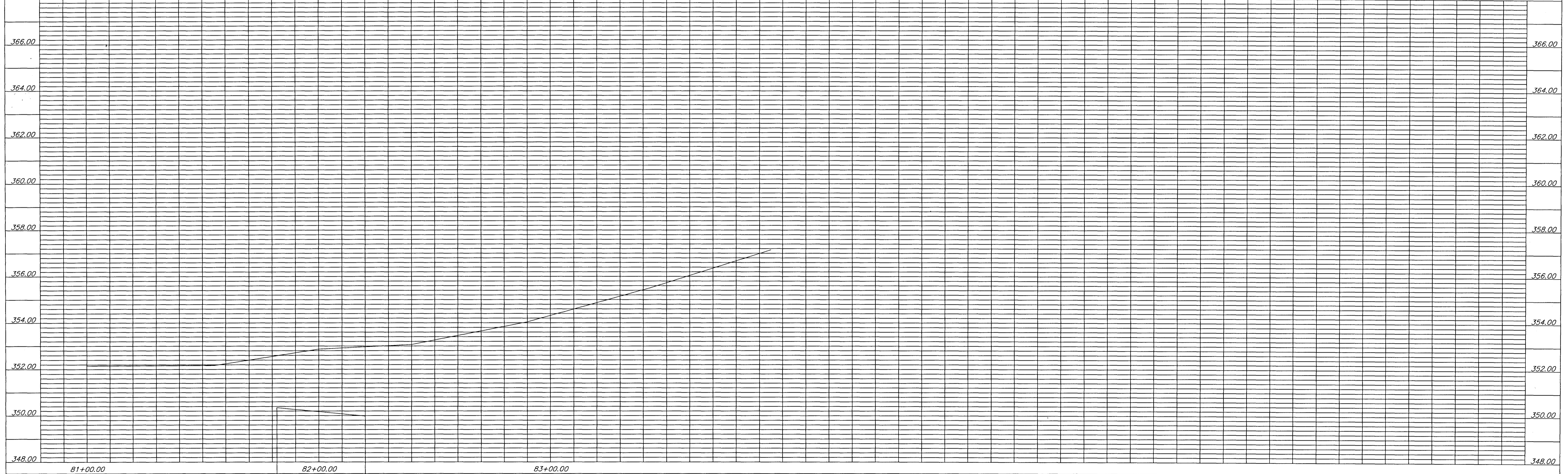
Legend:  
 F.I.P. = Found Iron Pin  
 S.I.P. = Set Iron Pin - No. 4 Bar @ 1' - 6" Minimum  
 Existing Fence = - - - - -  
 Power Pole = \*  
 Light Pole = o  
 Water Meter = W.M.  
 Concrete Monument = .  
 Telephone Pedestal = Tel. Ped.  
 Cable Pedestal = T.V. Cable  
 Sanitary Sewer Manhole = S.S.M.H.  
 Section Line = - - - - -  
 Water Valve = W.V.  
 Natural Gas Valve = N.G.V.  
 P.K. = Parker Kalon Nail (Fastner) Found (Fnd. P.K.) or Set (Set P.K.)  
 U. S. Mail Box =



RICE ROAD Sta. 75+00 to Sta. 81+00

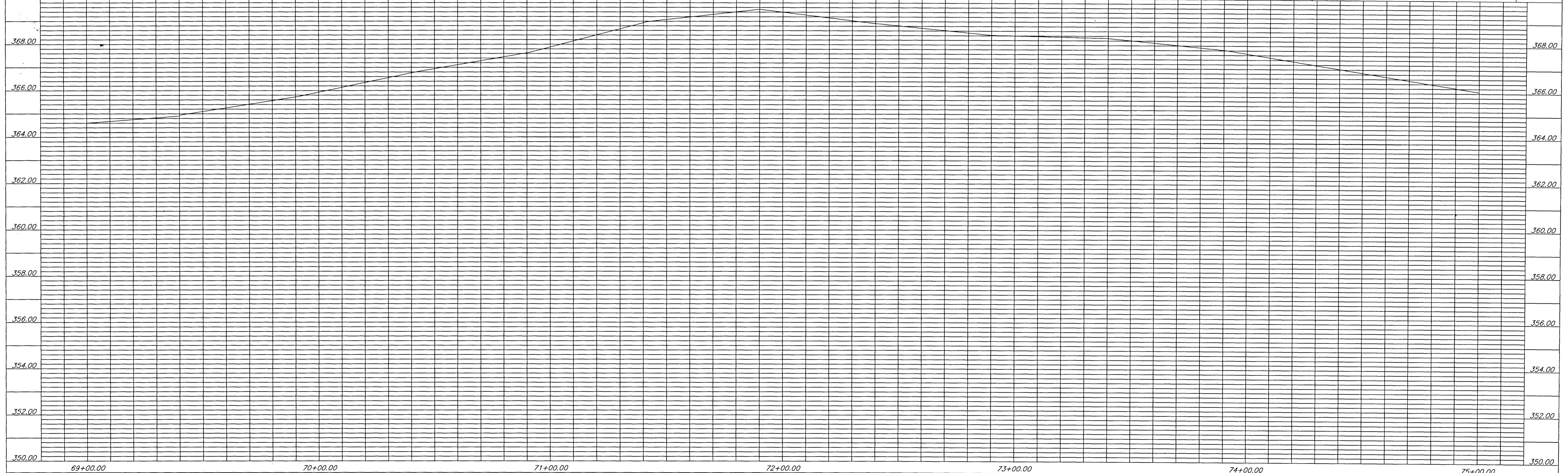
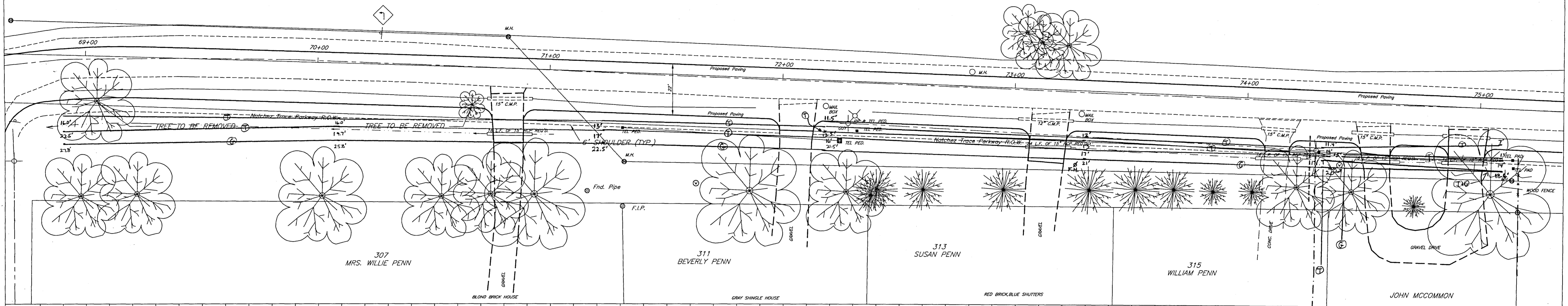


- Legend:  
F.I.P. = Found Iron Pin  
S.I.P. = Set Iron Pin - No. 4 Bar @ 1' - 6" Minimum  
Existing Fence = - - - - -  
Power Pole = +  
Power Line = - - - - -  
Light Pole = o  
Water Meter = \* W.M.  
Concrete Monument = \*  
Telephone Pedestal = • Tel. Ped.  
Cable Pedestal = • T.V. Cable  
Sanitary Sewer Manhole = • S.S.M.H.  
Section Line = - - - - -  
Water Valve = x W.V.  
Natural Gas Valve = x G.V.  
P.K. = Parker Kalon Nail (Fastner) Found (Fnd. P.K.) or Set (Set P.K.)  
U. S. Mail Box =

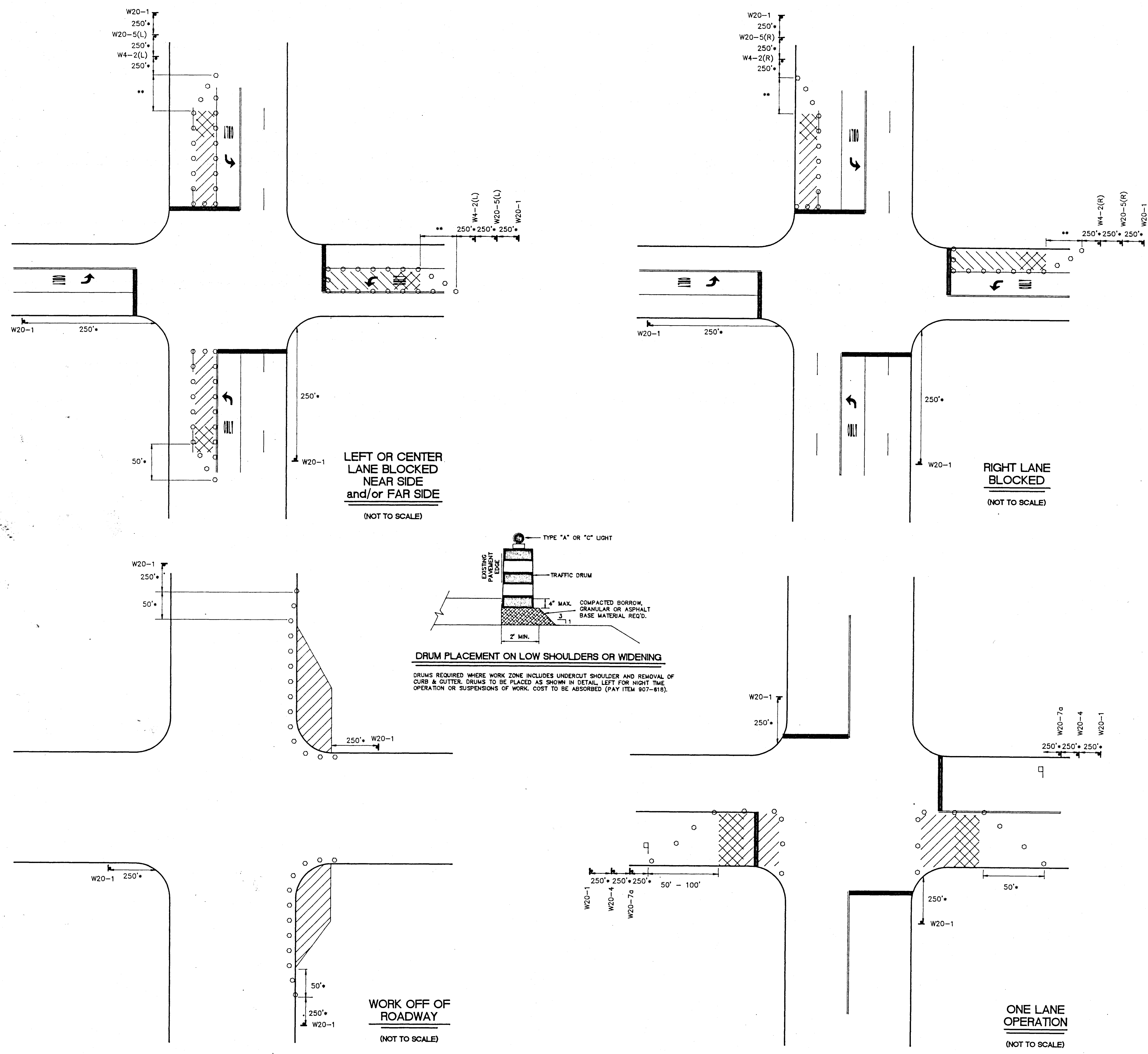


RICE ROAD Sta. 81+00 to Sta. 83+95

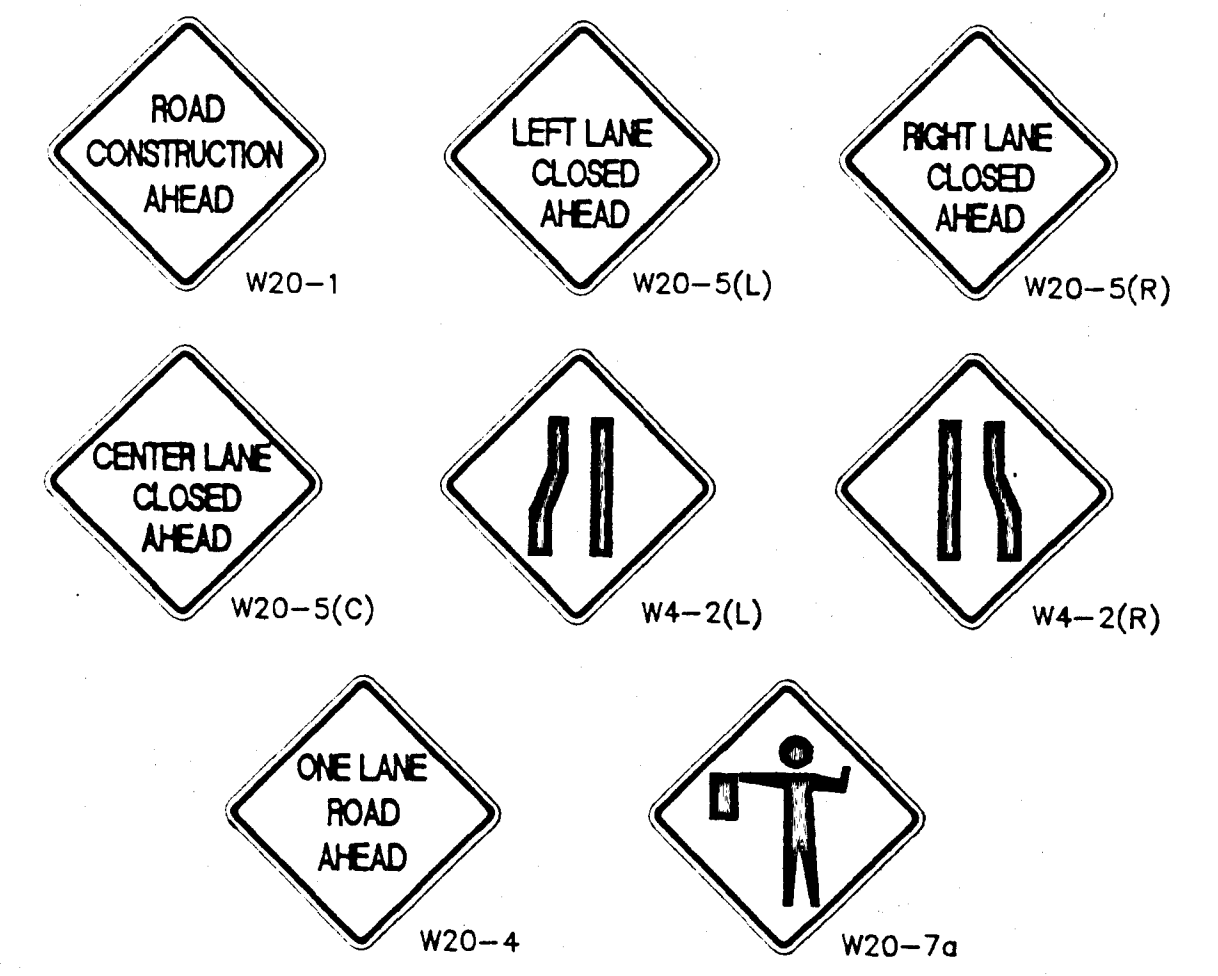
Legend:  
 F.I.P. = Found Iron Pin  
 S.I.P. = Set Iron Pin - No. 4 Bar @ 1' - 6" Minimum  
 Existing Fence = - - - - -  
 Power Pole = +  
 Power Line = - - - - -  
 Light Pole = ○  
 Water Meter = • W.M.  
 Concrete Monument = •  
 Telephone Pedestal = • Tel. Ped.  
 Cable Pedestal = • T.V. Cable  
 Sanitary Sewer Manhole = • S.S.M.H.  
 Section Line = - - - - -  
 Water Valve = • W.V.  
 Natural Gas Valve = • N.G.V.  
 P.K. = Parker Kalen Nail (Fastner) Found (Fnd. P.K.) or Set (Set P.K.)  
 U. S. Mail Box =



RICE ROAD Sta. 69+00 to Sta. 75+00



**SIGN LEGEND**



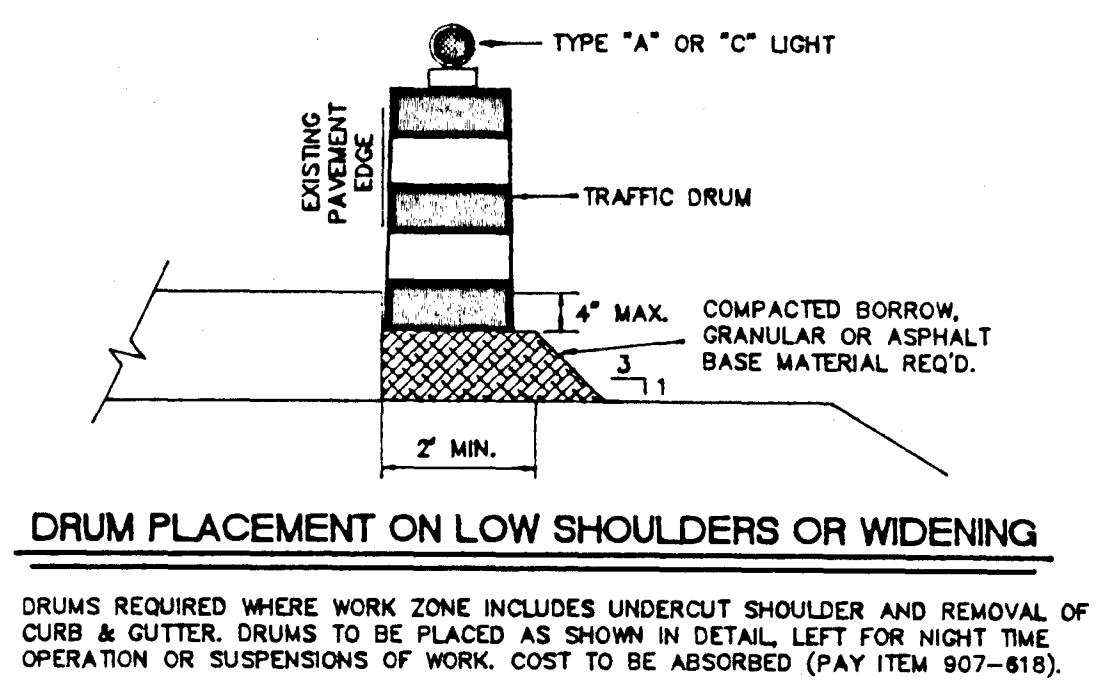
**GENERAL NOTES**

1. ADDITIONAL ADVANCE WARNING SIGNS MAY BE NECESSARY.
2. POST MOUNTED SIGNS SHALL HAVE A 7' MINIMUM MOUNTING HEIGHT.
3. PAYMENT FOR ALL SIGNS, CONES, DRUMS, STEEL PLATES AND OTHER MATERIALS, BARRICADES, LABOR AND INCIDENTALS REQUIRED TO IMPLEMENT THE TRAFFIC CONTROL PLAN SHALL BE INCLUDED UNDER PAY ITEM 907-618, MAINTENANCE OF TRAFFIC.
4. APPROACH SIDE TRAFFIC CONTROL TO BE USED WHEN WORK OCCURS ON EITHER THE APPROACH SIDE OR THE FAR SIDE OF THE INTERSECTION. FAR SIDE TRAFFIC CONTROL IS NOT NEEDED WHEN WORK IS CONFINED TO THE APPROACH SIDE ONLY.
5. FOR A DIVIDED HIGHWAY SITUATION, A SECOND SET OF ADVANCE WARNING SIGNS SHALL BE ERRECTED IN MEDIAN AREA (8' MIN. MEDIAN WIDTH REQUIRED).
6. CONTRACTOR SHALL NOT BE ALLOWED TO CLOSE A LANE OF TRAFFIC DURING THE TIME PERIODS OF 7:00 - 9:00 A.M. & 4:00 - 6:00 P.M. WEEKDAYS.

**LEGEND**

- DRUMS (30' MAXIMUM SPACING) - 36" CONES MAY BE USED AS A SUBSTITUTE FOR SHORT TERM WORK OR AS DIRECTED BY ENGINEER (DAY TIME ONLY)
- W20-1 SIGNS - SEE SIGN LEGEND  
MIN. SIZE 48" x 48", BLACK ON ORANGE BACKGROUND
- FLAGGER WITH PADDLE - 18" STOP/SLOW PADDLES SHALL BE USED. HANDHELD FLAGS SHALL NOT BE ACCEPTED AS PROPER TRAFFIC CONTROL DEVICES FOR FLAGGING OPERATION.
- ▨ WORK AREA      ▩ BUFFER AREA
- \* CONSIDERED MINIMUM DISTANCE - ENGINEER TO DETERMINE APPROPRIATE SPACING IN THE FIELD
- \*\* SPEED LIMIT M.P.H.      TAPER LENGTH FEET

25	125
30	180
35	250
40	325
45	550

**CITY OF RIDGELAND, MS.**

**STANDARD DETAILS**

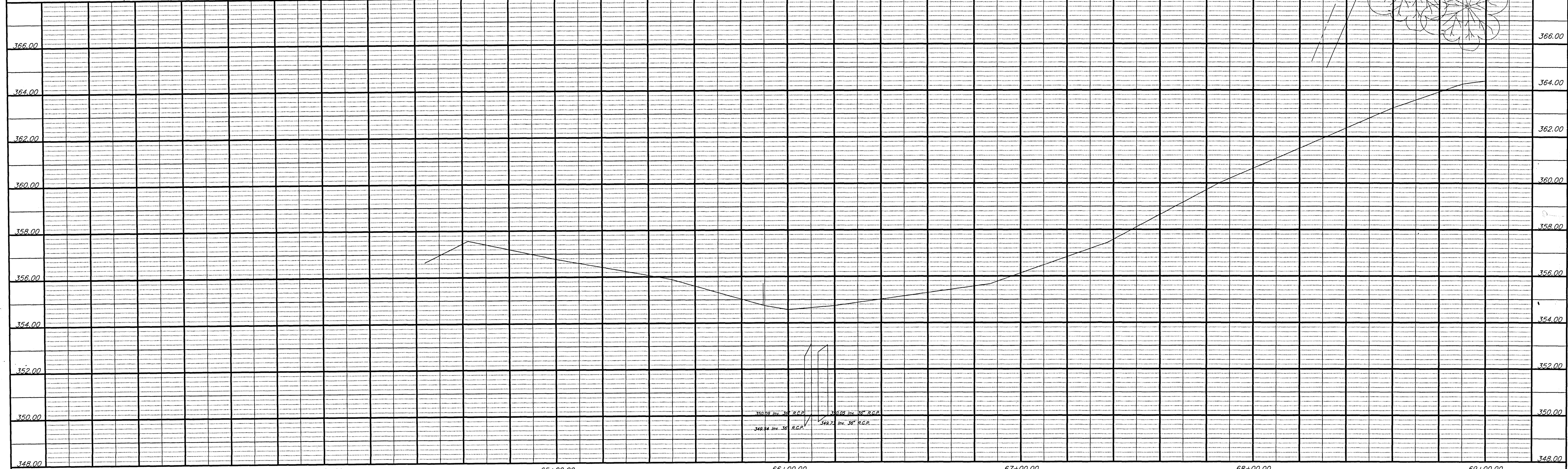
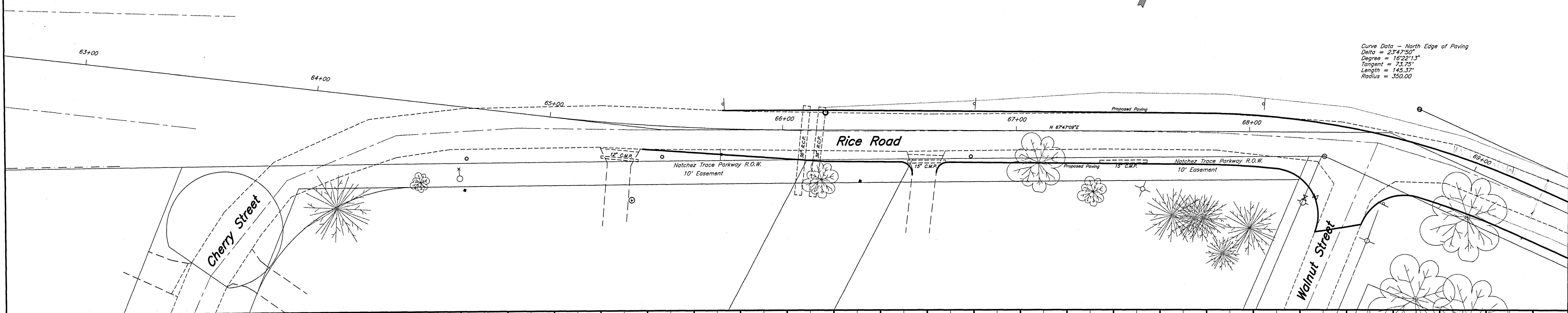
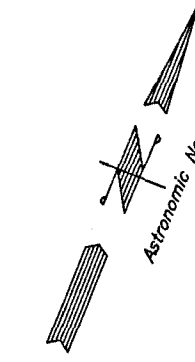
THE CITY OF  
RIDGELAND

1688-006 (8.13)

Legend:  
 F.I.P. = Found Iron Pin  
 S.I.P. = Set Iron Pin - No. 4 Bar @ 1' - 6" Minimum  
 Existing Fence = - - - - -  
 Power Pole = +  
 Power Line = - - - - -  
 Light Pole = o  
 Water Meter = • W.M.  
 Concrete Monument = •  
 Telephone Pedestal = • Tel. Ped.  
 Cable Pedestal = • T.V. Cable  
 Sanitary Sewer Manhole = • S.S.M.H.  
 Section Line = - - - - -  
 Water Valve = W.V.  
 Natural Gas Valve = N.G.V.  
 P.K. = Parker Kalon Nail (Fastner) Found (Fnd. P.K.) or Set (Set P.K.)  
 U. S. Mail Box = ○

Curve Data  
 Delta = 06°34'46"  
 Degree = 06°00'00"  
 Tangent = 54.89'  
 Length = 109.63'  
 Radius = 954.92'

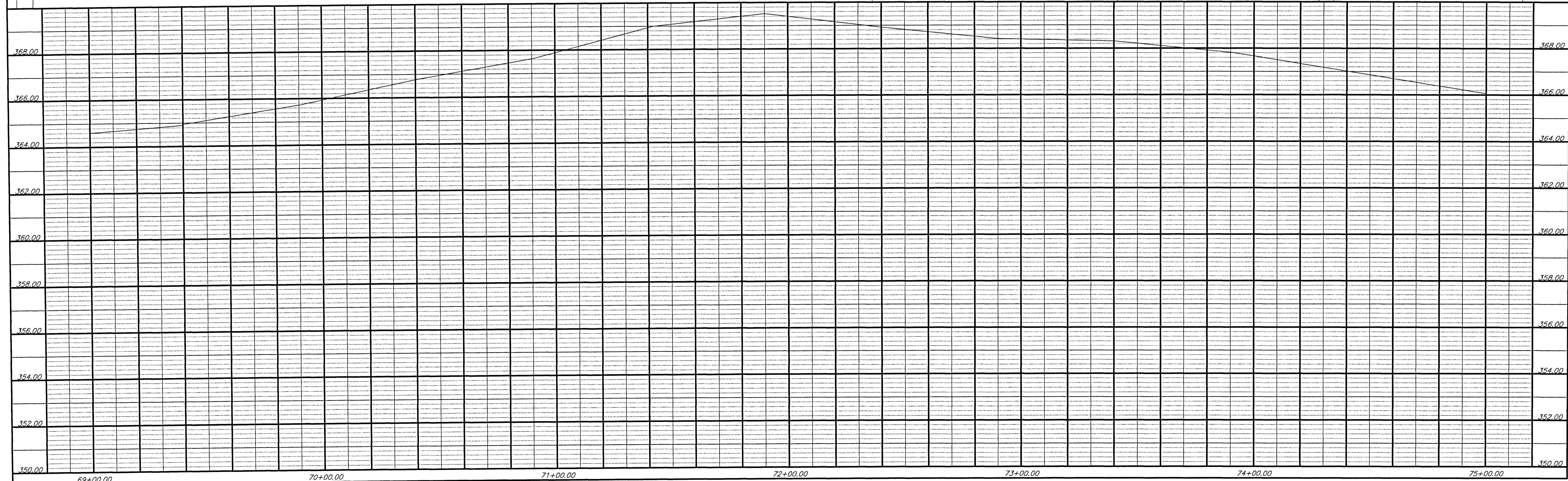
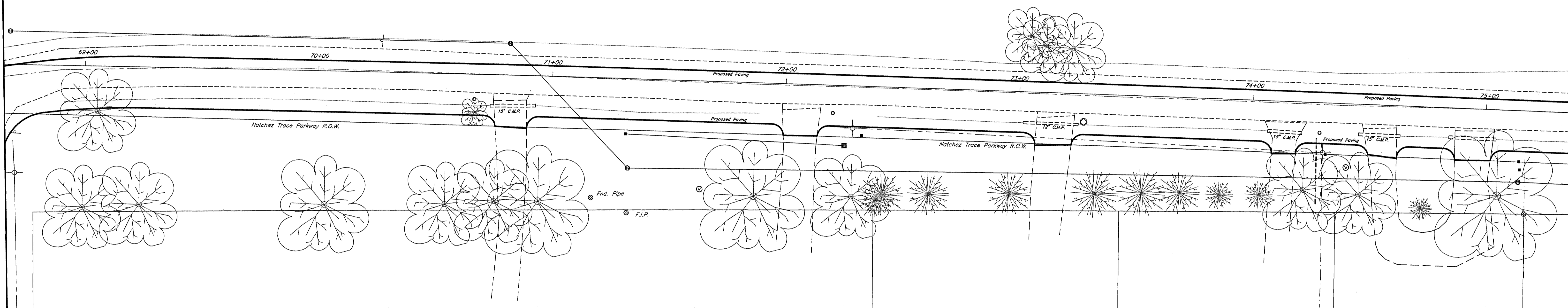
Curve Data - North Edge of Paving  
 Delta = 23°47'50"  
 Degree = 16°22'13"  
 Tangent = 73.75'  
 Length = 145.37'  
 Radius = 350.00'



RICE ROAD Sta. 63+00 to Sta. 69+00

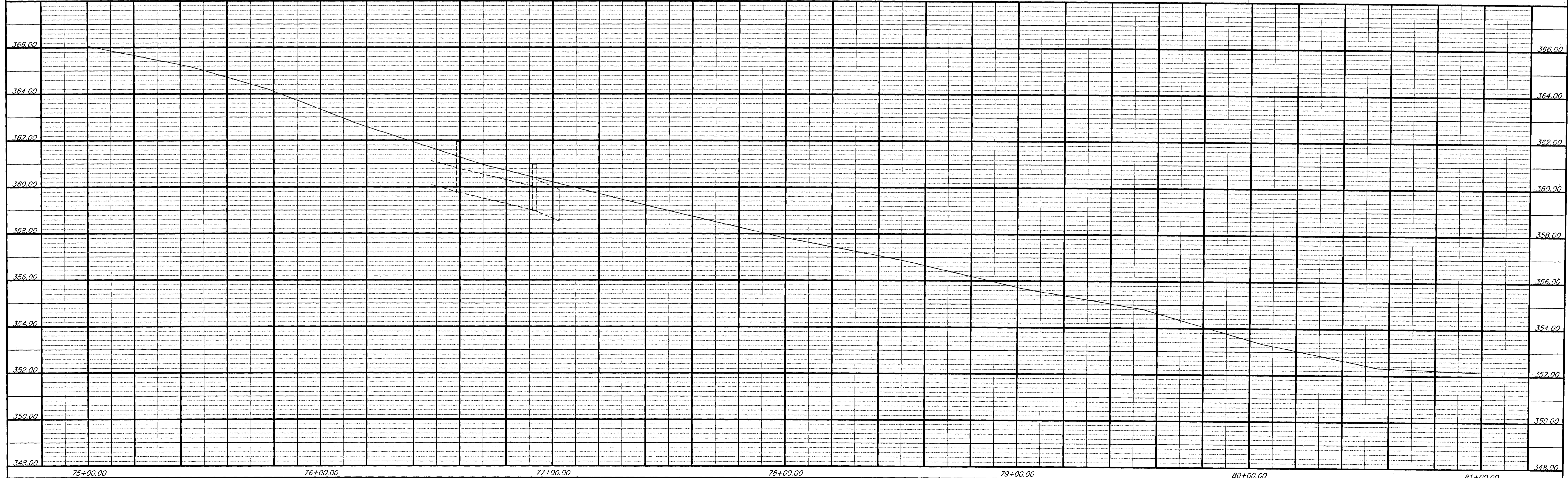
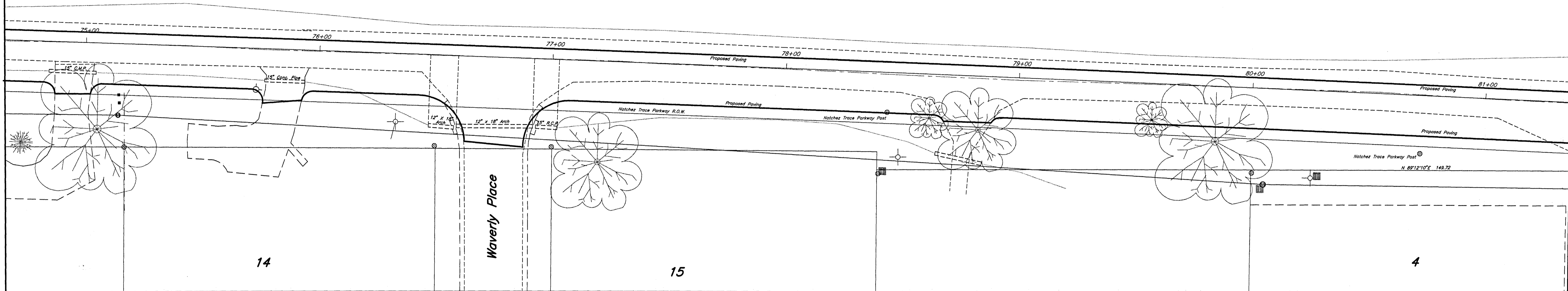


- Legend:  
 F.I.P. = Found Iron Pin  
 S.I.P. = Set Iron Pin - No. 4 Bar @ 1' - 6" Minimum  
 Existing Fence = - - - - -  
 Power Pole = +  
 Light Pole = -  
 Water Meter = • W.M.  
 Concrete Monument = •  
 Telephone Pedestal = • Tel. Ped.  
 Cable Pedestal = • T.V. Cable  
 Sanitary Sewer Manhole = • S.S.M.H.  
 Section Line = - - - - -  
 Water Valve = • W.V.  
 Natural Gas Valve = • G.V.  
 P.K. = Parker Kalon Nail (Fastner) Found (Fnd. P.K.) or Set (Set P.K.)  
 U. S. Mail Box = ○

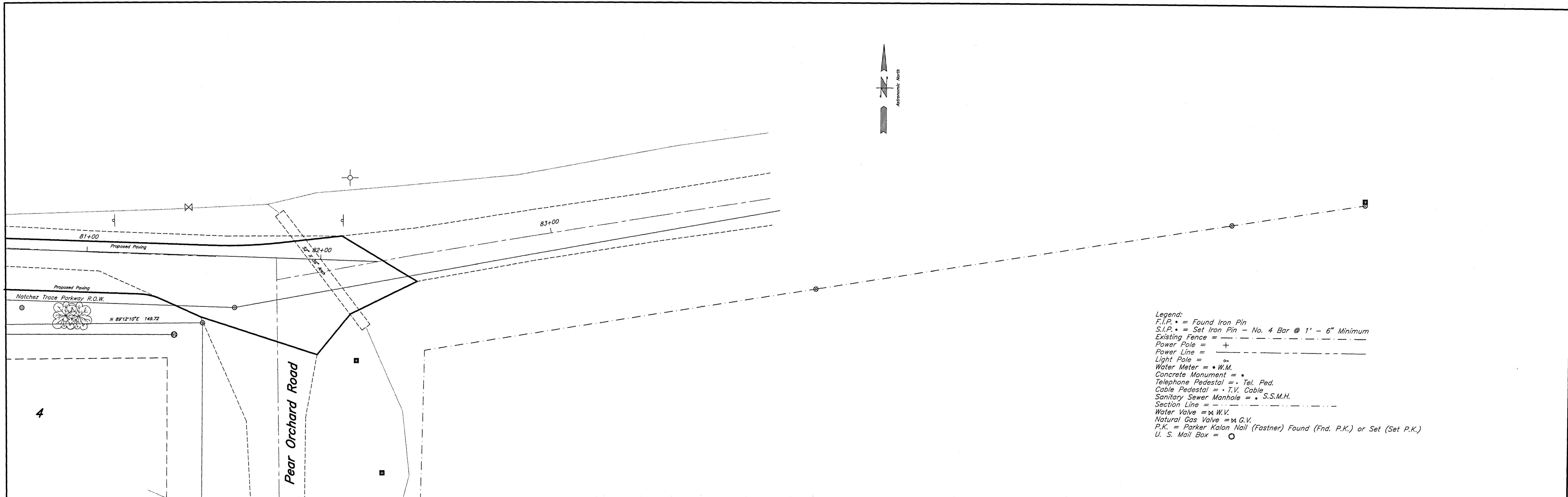


RICE ROAD Sta. 69+00 to Sta. 75+00

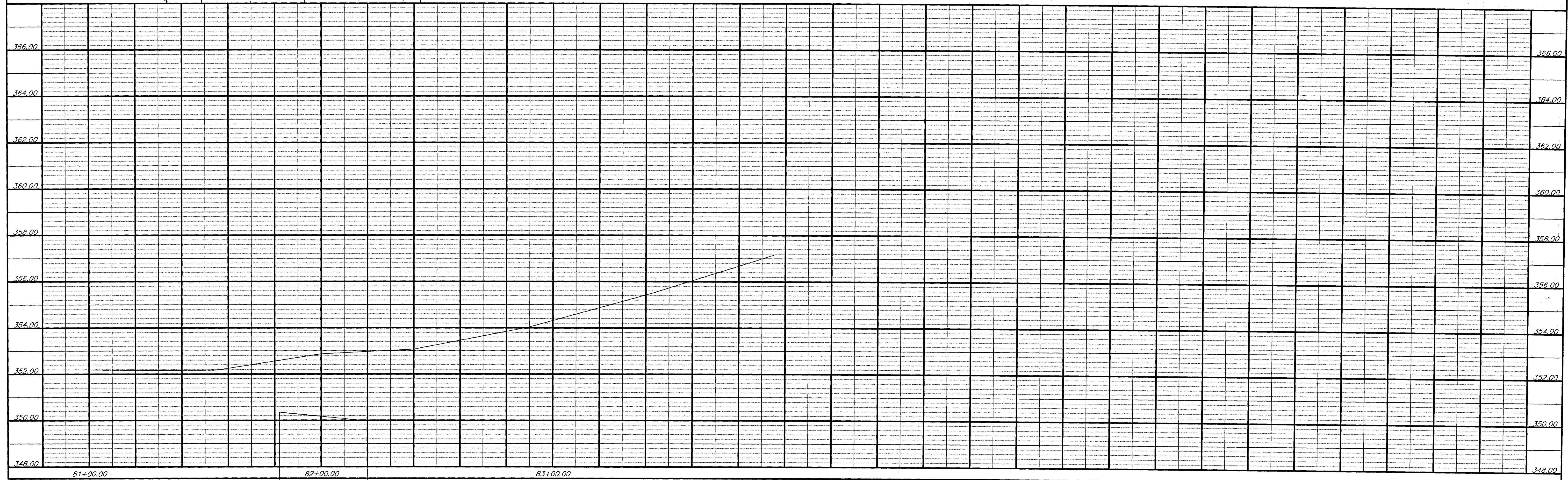
- Legend:  
 F.I.P. = Found Iron Pin  
 S.I.P. = Set Iron Pin - No. 4 Bar @ 1' - 6" Minimum  
 Existing Fence = - - - - -  
 Power Pole = +  
 Power Line = - - - - -  
 Light Pole = o  
 Water Meter = • W.M.  
 Concrete Monument = •  
 Telephone Pedestal = • Tel. Ped.  
 Cable Pedestal = • T.V. Cable  
 Sanitary Sewer Manhole = • S.S.M.H.  
 Section Line = - - - - -  
 Water Valve = W.V.  
 Natural Gas Valve = G.V.  
 P.K. = Parker Kalon Nail (Fastner) Found (Fnd. P.K.) or Set (Set P.K.)  
 U. S. Mail Box = ⊙



RICE ROAD Sta. 75+00 to Sta. 81+00



- Legend:
- F.I.P. = Found Iron Pin
  - S.I.P. = Set Iron Pin - No. 4 Bar @ 1' - 6" Minimum
  - Existing Fence = - - - - -
  - Power Pole = +
  - Power Line = - - - - -
  - Light Pole = o
  - Water Meter = • W.M.
  - Concrete Monument = ■
  - Telephone Pedestal = • Tel. Ped.
  - Cable Pedestal = • T.V. Cable
  - Sanitary Sewer Manhole = • S.S.M.H.
  - Section Line = - - - - -
  - Water Valve = ∞ W.V.
  - Natural Gas Valve = ∞ G.V.
  - P.K. = Parker Kalon Nail (Fastner) Found (Fnd. P.K.) or Set (Set P.K.)
  - U. S. Mail Box = ○



RICE ROAD Sta. 81+00 to Sta. 83+95