

RICHMOND GROVE COMMUNITY WATER ASSOCIATION, INC.

MADISON COUNTY, MISSISSIPPI

WATER SYSTEM

FARMERS HOME ADMINISTRATION

U. S. Department of Agriculture

T.B. Fatherree, State Director

H.F. Worley, F.H.A. Engineer

BOARD of DIRECTORS

A.L. Johnson, Chairman

B.L. Thompson

L.L. Henderson

J. B. Washington

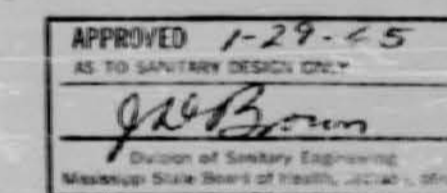
J.H. Brown

Arlather Forbes

Lola Mae Lott

INDEX

| | |
|---------------------------|---------|
| Water Distribution System | 64-12-2 |
| Miscellaneous Details | 64-12-3 |
| Water Well Detail Sheet | 64-12-4 |



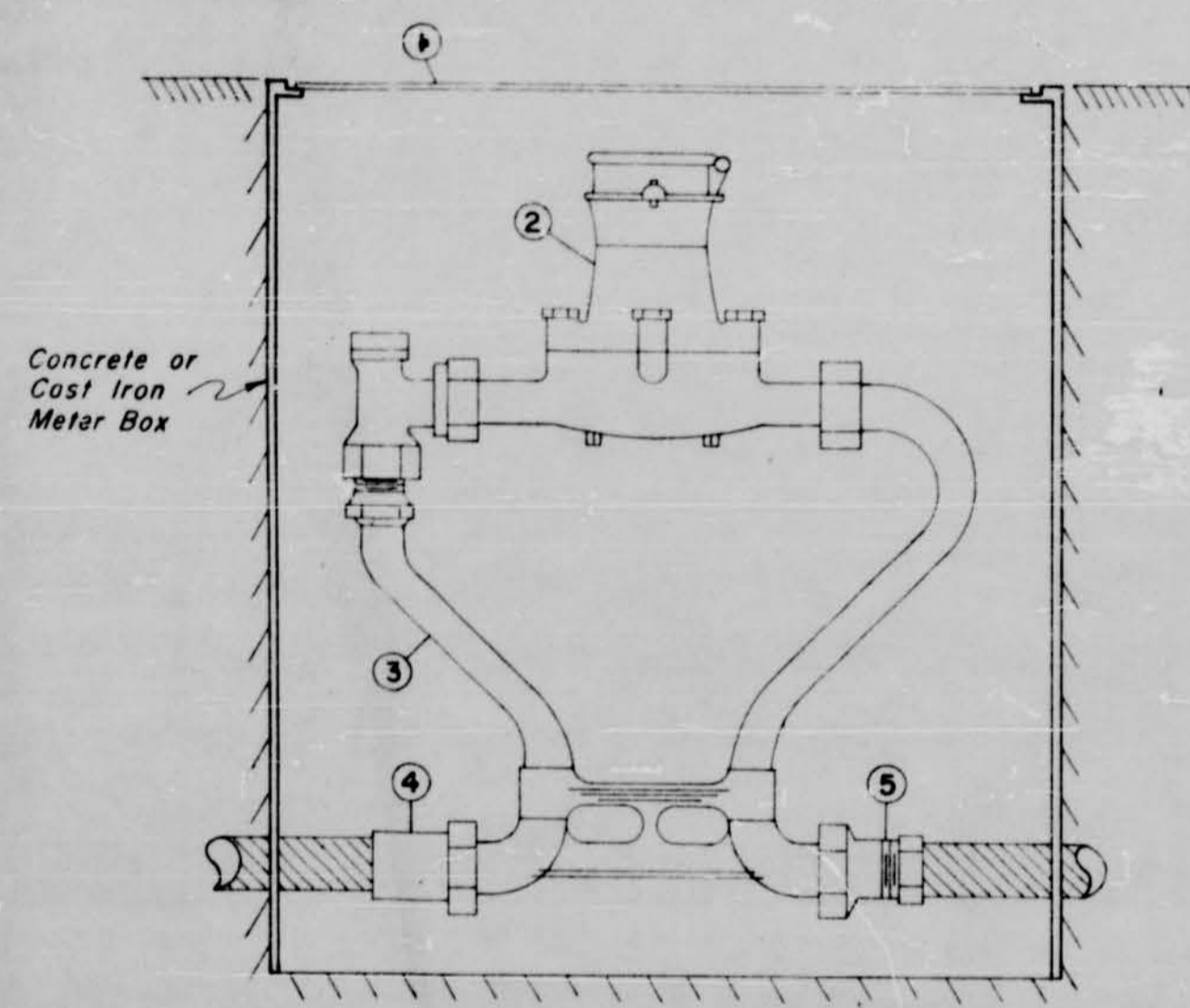
SOUTHERN CONSULTANTS, INC.

Consulting Engineers

Jackson, Miss.



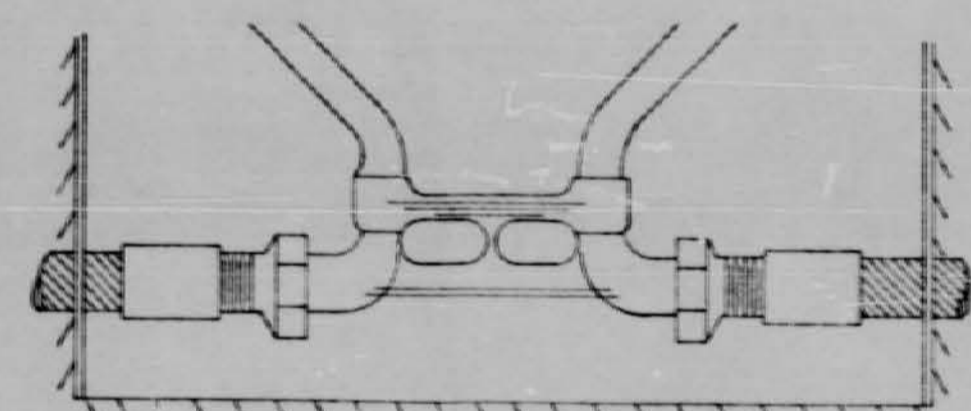
| | | |
|------|-------------|---------------|
| DATE | APPROVED BY | DESIGN NUMBER |
| | | |



| Item | Description | Size | |
|------|-------------------------------|-----------------|-----------------|
| | | 1 | 2 |
| 1 | Meter Box Cover | Harper Standard | Harper Standard |
| 2 | Meter | 5/8" X 3/4" | 1" |
| 3 | Meter Yoke, Mueller No. 14034 | 5/8" X 3/4" | 1" |
| 4 | Inlet, Mole, I.P. | 3/4" | 1" |
| 5 | Outlet, Mole, I.P. | 3/4" | 1" |

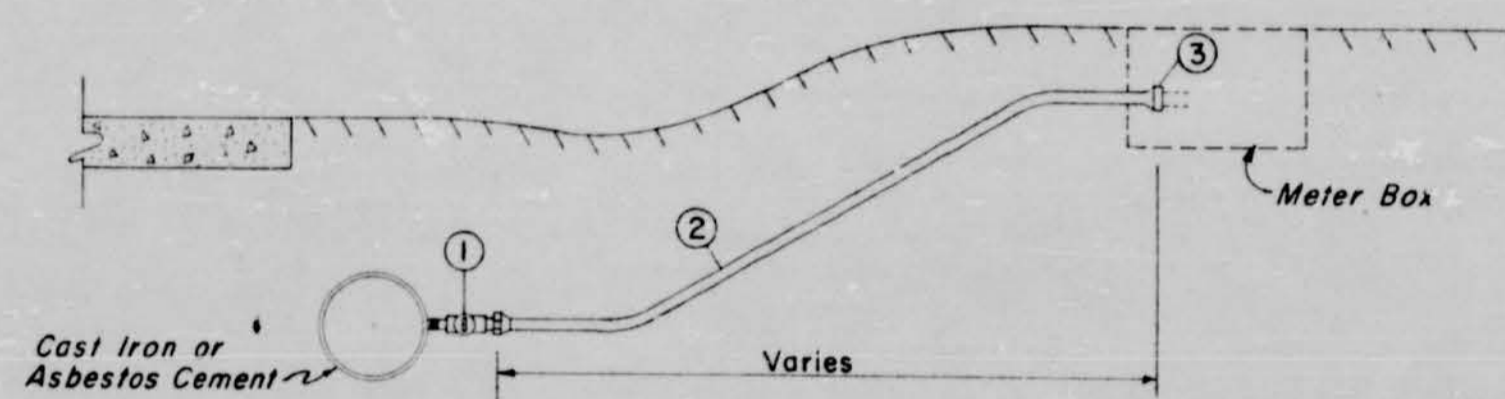
See Detail (This Sheet) For Use With PVC Plastic Pipe.

TYPICAL WATER METER INSTALLATION



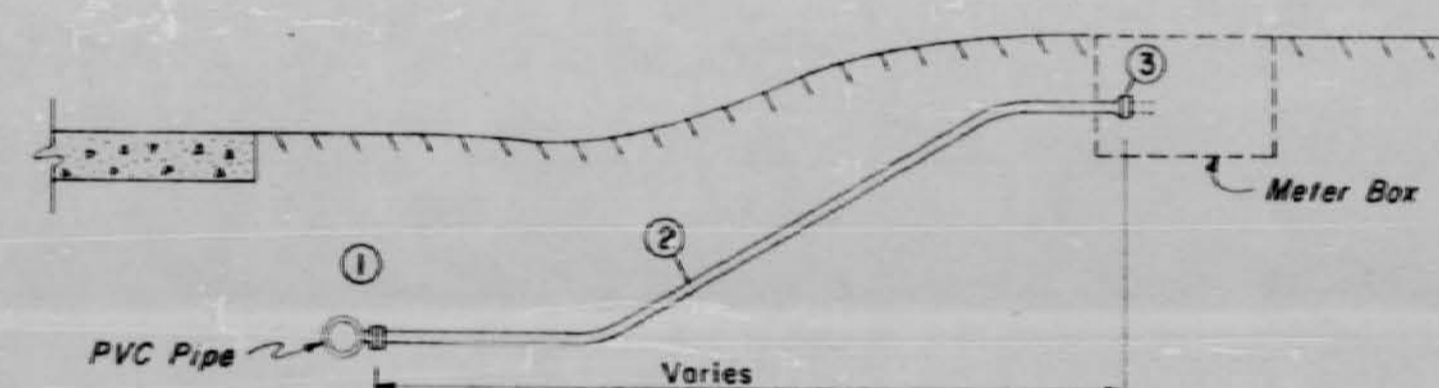
When Changing From I.P. to PVC Use Short Galvanized Nipple and Sch. 40 PVC Female Adapter. Do Not Use PVC Mole Adapter.

TYPICAL PVC PLASTIC SERVICE PIPE CONNECTION AT METER



| Item | Description | Size | |
|------|--|------|-----------|
| | | 1 | 2 |
| 1 | Corporation Stop Mueller No. H-15000 | 3/4" | 1" |
| 2 | Type "K" Copper Tube | 3/4" | 1" |
| 3 | Copper to I.P. Coupling Mueller No. H-15450 | 3/4" | 1" X 3/4" |

TYPICAL SERVICE TAP
CAST IRON OR ASBESTOS CEMENT WATER MAIN

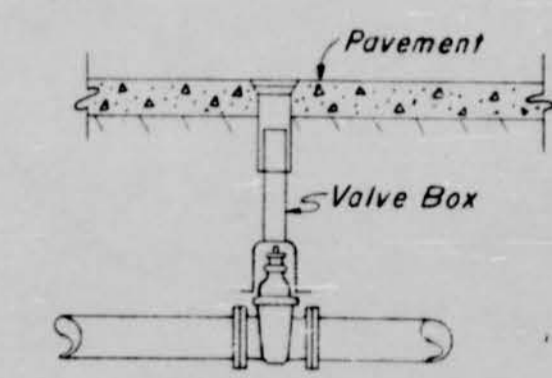


| Item | Description | Size | | |
|------|---------------------------------|--|------|----|
| | | 1 | 2 | |
| 1 | 2 1/2" or Larger PVC Pipe | Single Strap Service Clamp, Mueller No. H-10454, 10455, 10456, 10457 Corporation Stop, Mueller No. H-15025 | 3/4" | 1" |
| 1 | 2" or Smaller PVC Pipe | Reducing Tee (PVC) or Single Strap Service Clamp With Corporation Stop | 3/4" | 1" |
| 2 | PVC, Schedule 40, Pipe | | 3/4" | 1" |
| 3 | Schedule 40, PVC Female Adapter | | 3/4" | 1" |

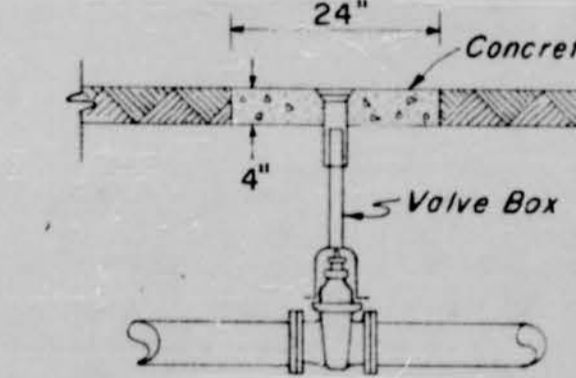
TYPICAL SERVICE TAP, PVC WATER MAIN

SOUTHERN CONSULTANTS, INC.

Consulting Engineers
Office: PLAZA 5541 B. TRAIL 25 NORTH
JACKSON, MISSISSIPPI

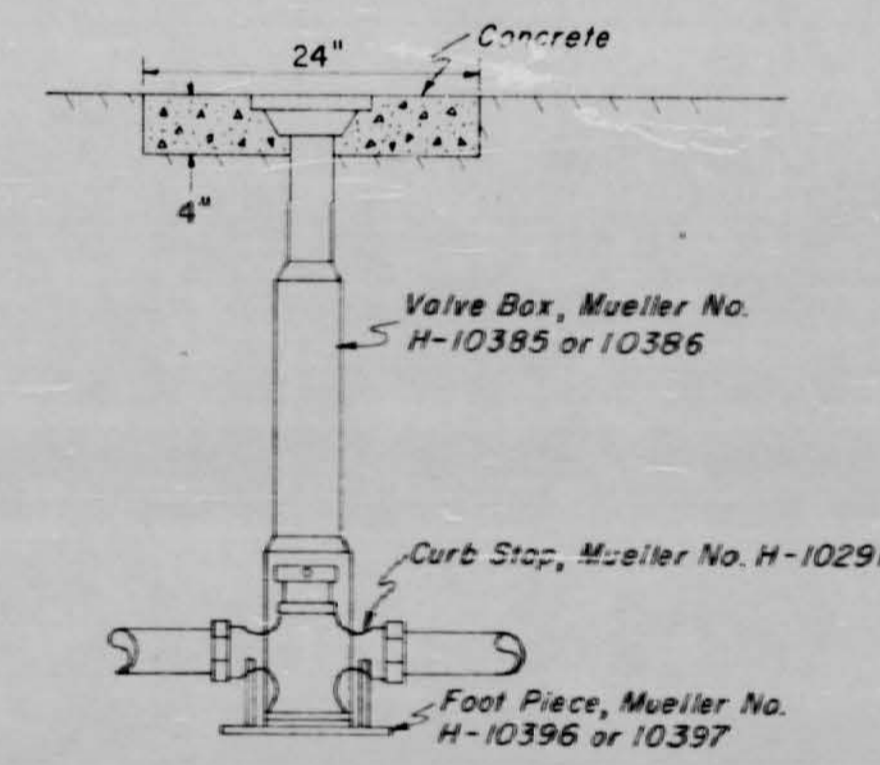


IN PAVEMENT

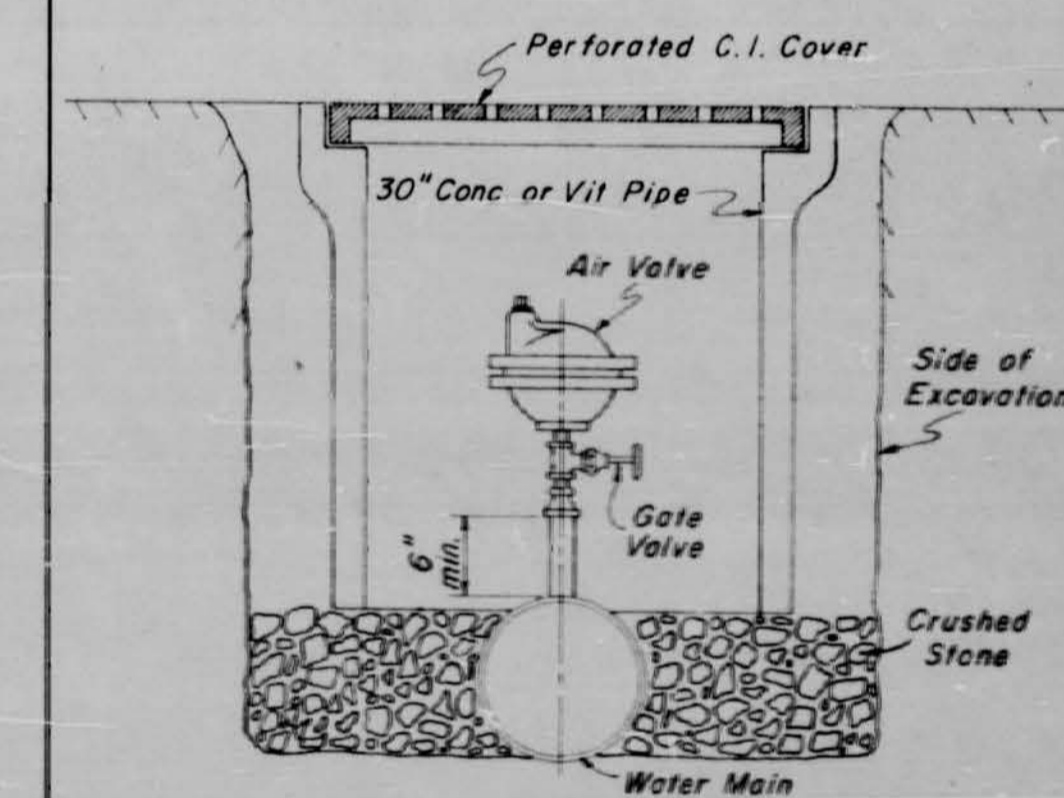


IN GRAVEL OR DIRT

TYPICAL LINE VALVE SETTING, 2" AND OVER



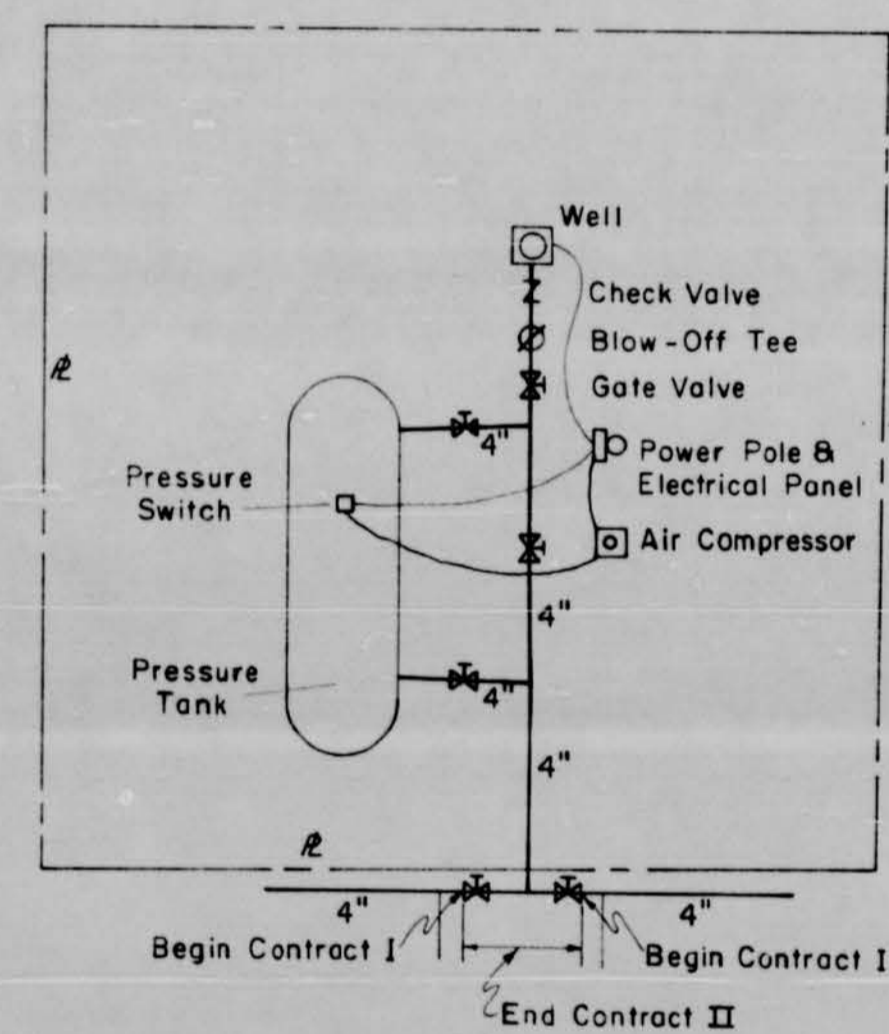
TYPICAL LINE VALVE
INSTALLATION UNDER 2"



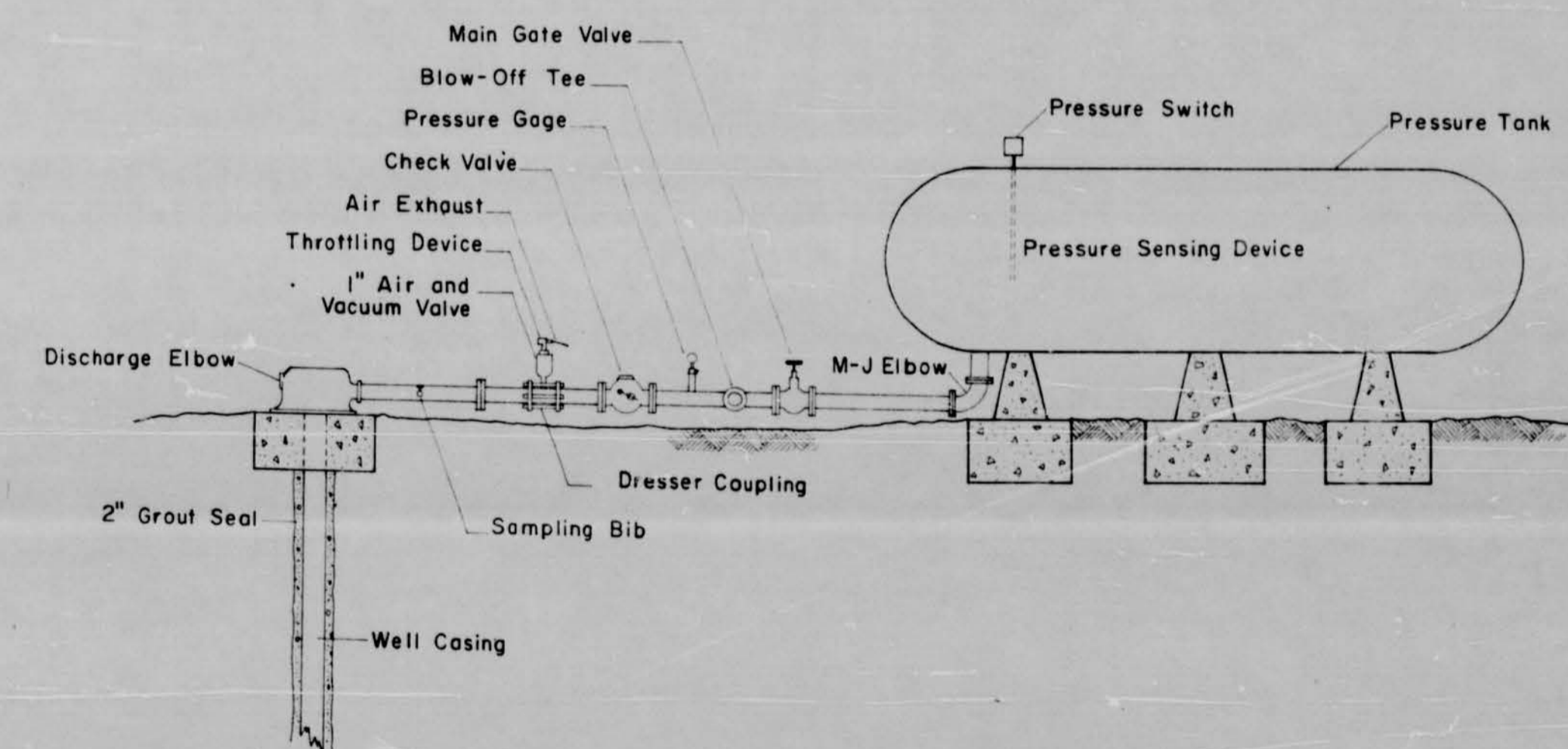
TYPICAL AIR VALVE SETTING



| | |
|---|----------------|
| RICHMOND GROVE COMMUNITY WATER ASSOCIATION, INC. | |
| Madison County | None |
| MISCELLANEOUS DETAILS | |
| 1/25/65 | R.C.L. 64-12-3 |



PLAN OF WELL AND PRESSURE TANK
 SCALE 1" = 10'-0"



ELEVATION OF WELL AND PRESSURE TANK
 (NOT TO SCALE)

| | |
|--|-----------------------------|
| RICHMOND GROVE COMMUNITY WATER ASSOCIATION | |
| Madison County | None |
| WATER WELL - DETAIL SHEET | |
| DATE: 1/25/65 | APPROVED BY: R.C.L. 64-12-4 |

Madison County

END

COMPLIMENTS

MORRISON MICROFILM SERVICE - P. O. BOX 10493 - JACKSON, MISSISSIPPI