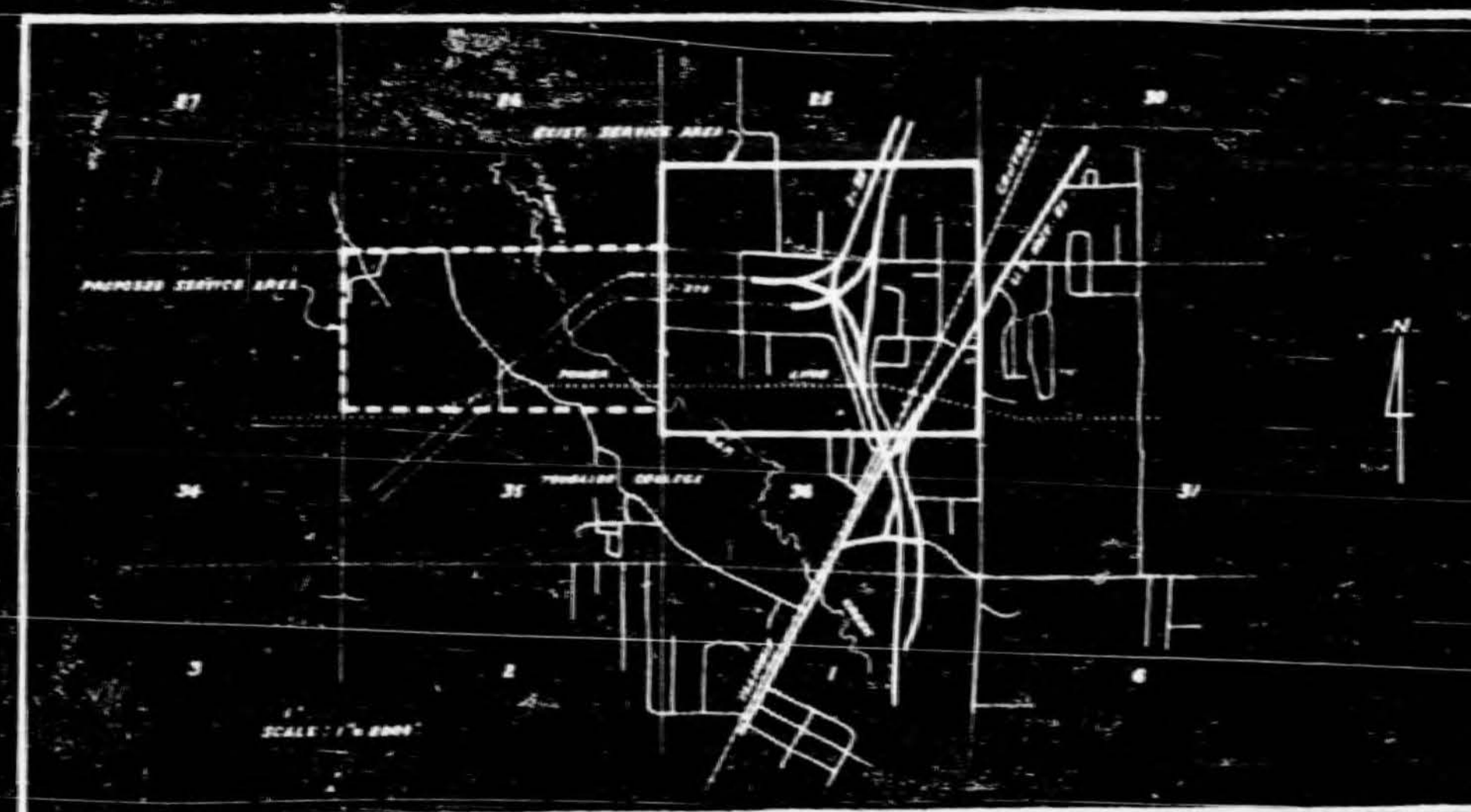


RICHMOND GROVE COMMUNITY WATER ASSOC., INC.
MADISON COUNTY, MISSISSIPPI
WATER DISTRIBUTION SYSTEM EXTENSIONS, 1974

FINANCED BY
 U. S. DEPARTMENT OF AGRICULTURE
 FARMERS HOME ADMINISTRATION

J. F. BARBOUR, III, STATE DIRECTOR

A. L. JOHNSON, PRESIDENT



INDEX

SHEET NO.	DESCRIPTION
73-156-1	COVER SHEET
73-156-2	WATER DISTRIBUTION SYSTEM, EXT.
73-156-3	MISCELLANEOUS DETAIL #1
73-156-4	MISCELLANEOUS DETAIL #2
73-156-5	ROAD & STREAM CROSS DETAILS
73-156-6	WATER WELL - DETAIL SHEET

LEGEND

	PROPOSED WATER MAIN
	EXISTING WATER MAIN
	GATE VALVE
	BLOW-OFF VALVE
	CUSTOMER

SOUTHERN CONSULTANTS, INC.
 CONSULTING ENGINEERS
 JACKSON, MISSISSIPPI

APPROVED 8-18-74

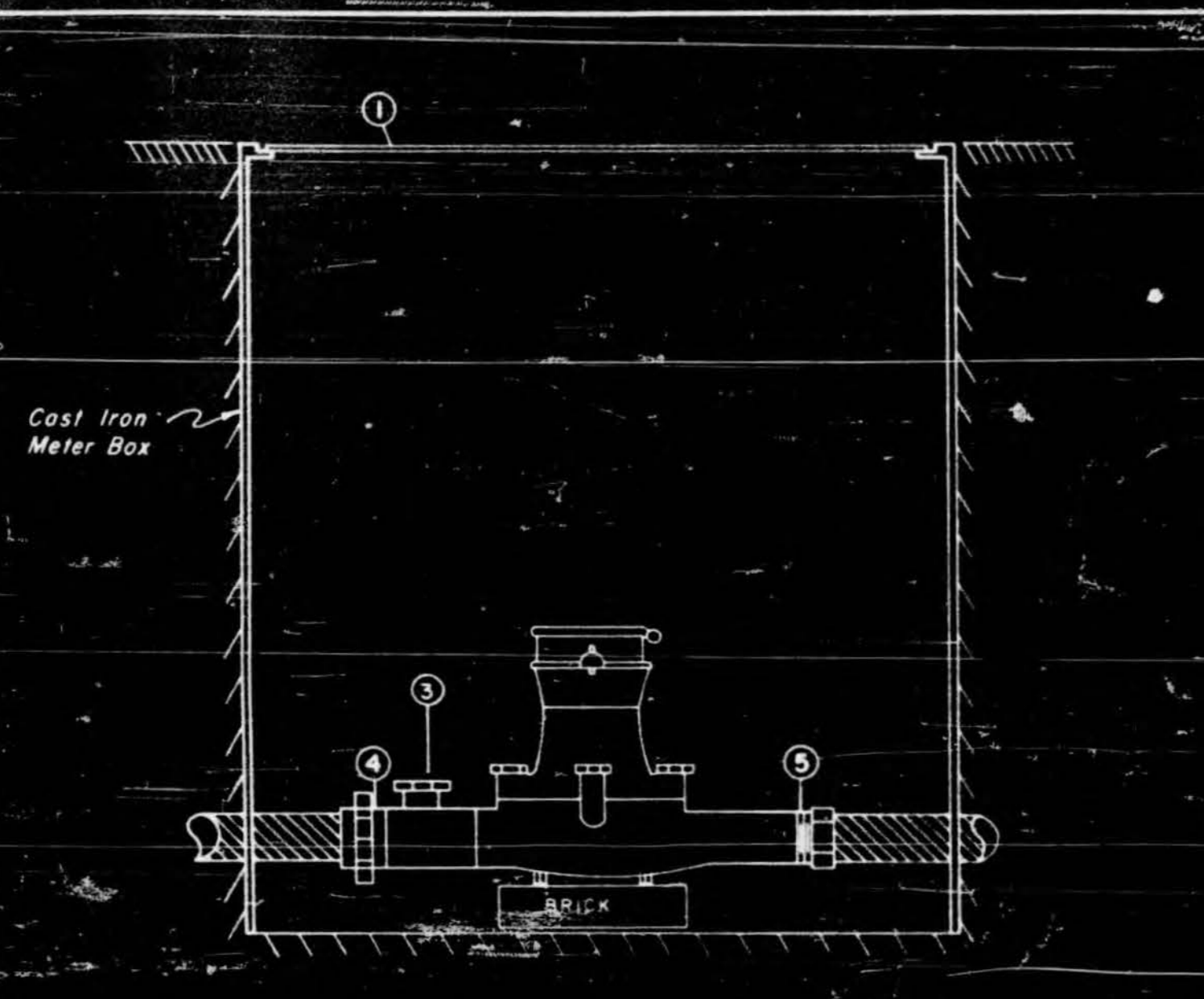
2439

DATE	APPROVED BY	SCALE
3-13-74	R.C.L.	73-156-1



F 53

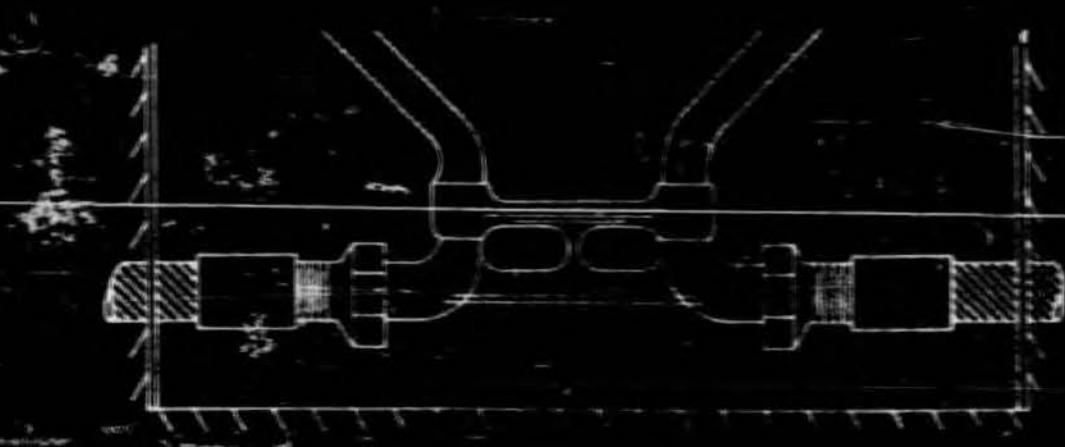
SHOWING ABOVE EXTENSION, 1934		
WATER DIVISION, NO.	7-100	
WATER DISTRIBUTION SYSTEM EXT.		
S. D. N.	S. C. L.	7-100-2



Item	Description	Size	
		1	2
1	Meter Box Cover	Harper Standard	Harper Standard
2	Meter	5/8" x 3/4"	1"
3	Locking Curb Stop	5/8" x 3/4"	1"
4	Inlet, Male, I.P.	3/4"	1"
5	Outlet, Male, I.P.	3/4"	1"

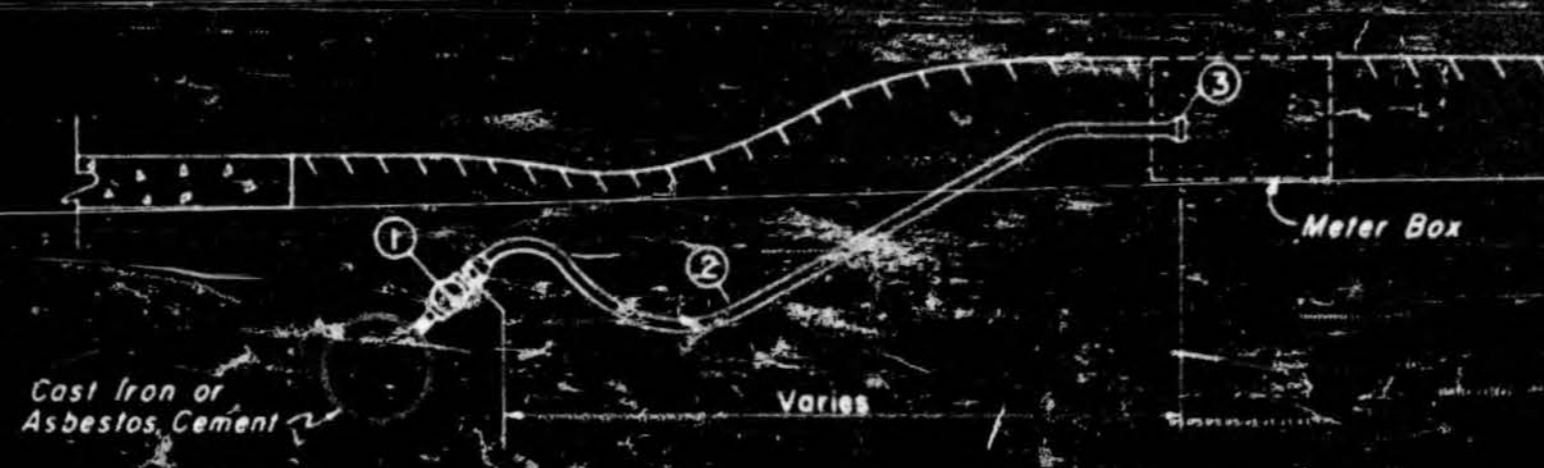
See Detail (This Sheet) For Use With PVC Plastic Pipe

TYPICAL WATER METER INSTALLATION



When Changing From I.P. to PVC Use Short Galvanized Nipple and Sch 40 PVC Female Adapter - Do Not Use PVC Male Adapter

TYPICAL PVC PLASTIC SERVICE PIPE CONNECTION AT METER



Item	Description	Size	
		1	2
1	Corporation Stop Mueller No. H-15000	3/4"	1"
2	Type "K" Copper Tube	3/4"	1"
3	Copper to I.P. Coupling Mueller No. H-15450	3/4"	1" x 3/4"

TYPICAL SERVICE TAP
CAST IRON OR ASBESTOS CEMENT WATER MAIN

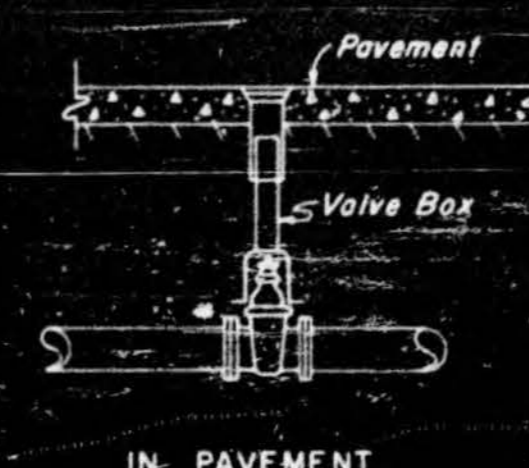


Item	Description	Size	
		1	2
1	4" or Larger PVC Pipe Single Strap Service Clamp, Mueller No. H-10454, 10455, 10456, 10457 Corporation Stop, Mueller No. H-15025	3/4"	1"
2	3" or Smaller PVC Pipe	3/4"	1"
3	PVC, Schedule 40, Pipe	3/4"	1"
4	Schedule 40, PVC Female Adapter	3/4"	1"

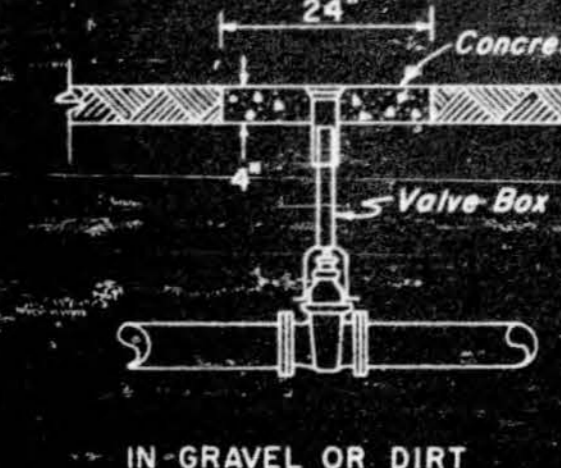
TYPICAL SERVICE TAP, PVC WATER MAIN

NOTE: CONTRACTOR WILL PERMANENTLY MARK LOCATION OF ALL VALVES AT THE RIGHT OF WAY LINE.

SOUTHERN CONSULTANTS, INC.
CONSULTING ENGINEERS
114 OFFICE PLAZA
JACKSON, MISS.

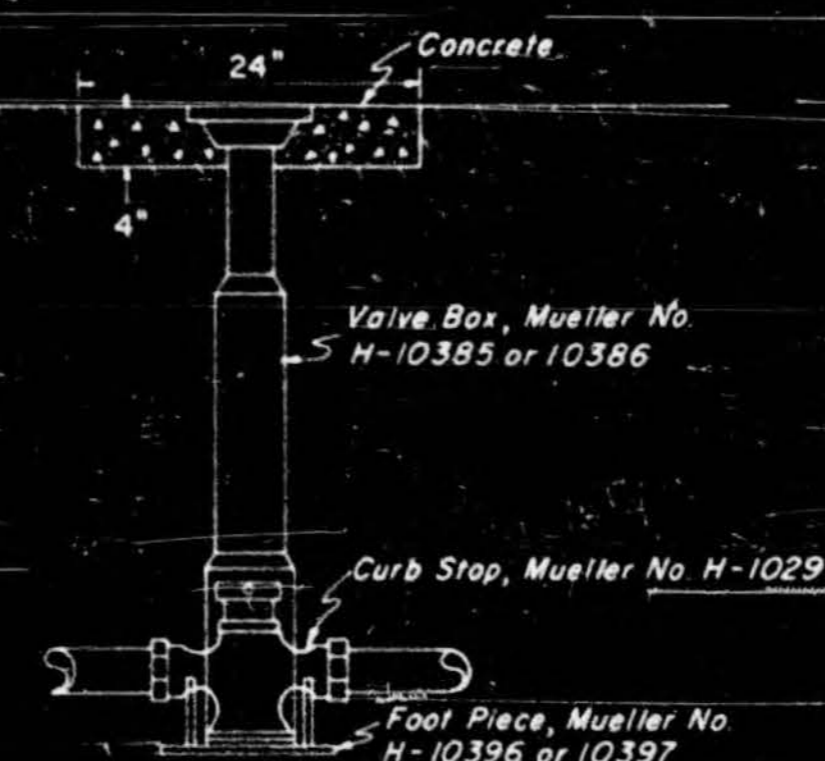


IN PAVEMENT

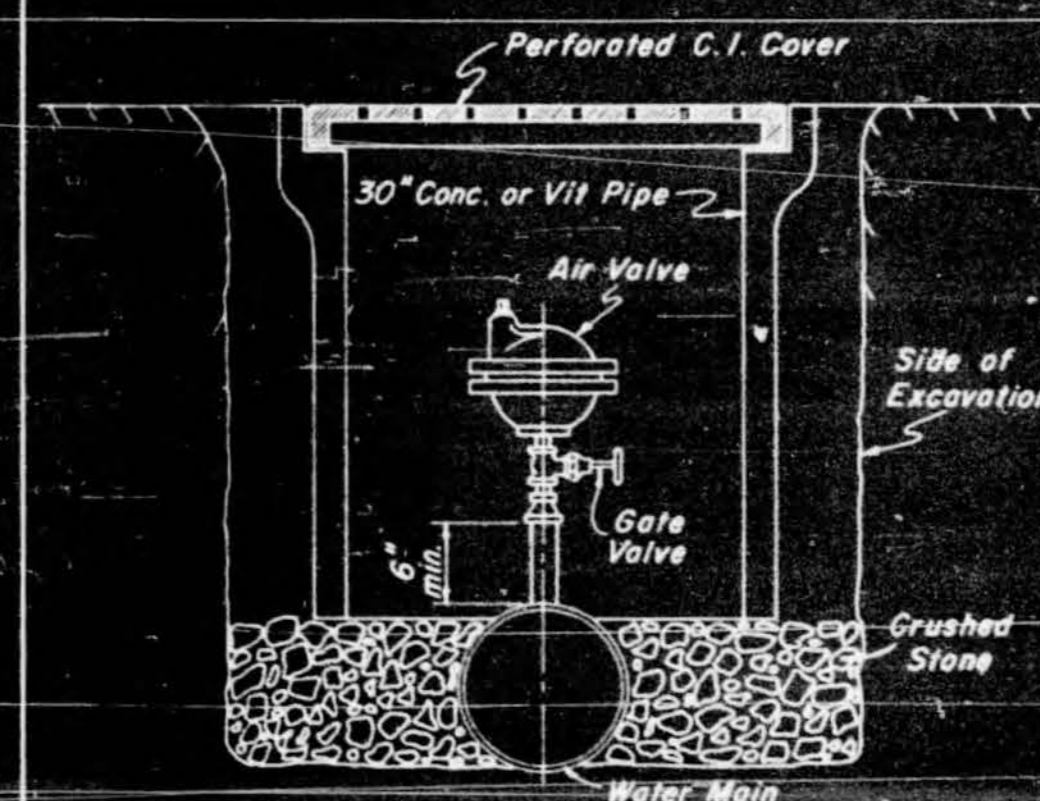


IN GRAVEL OR DIRT

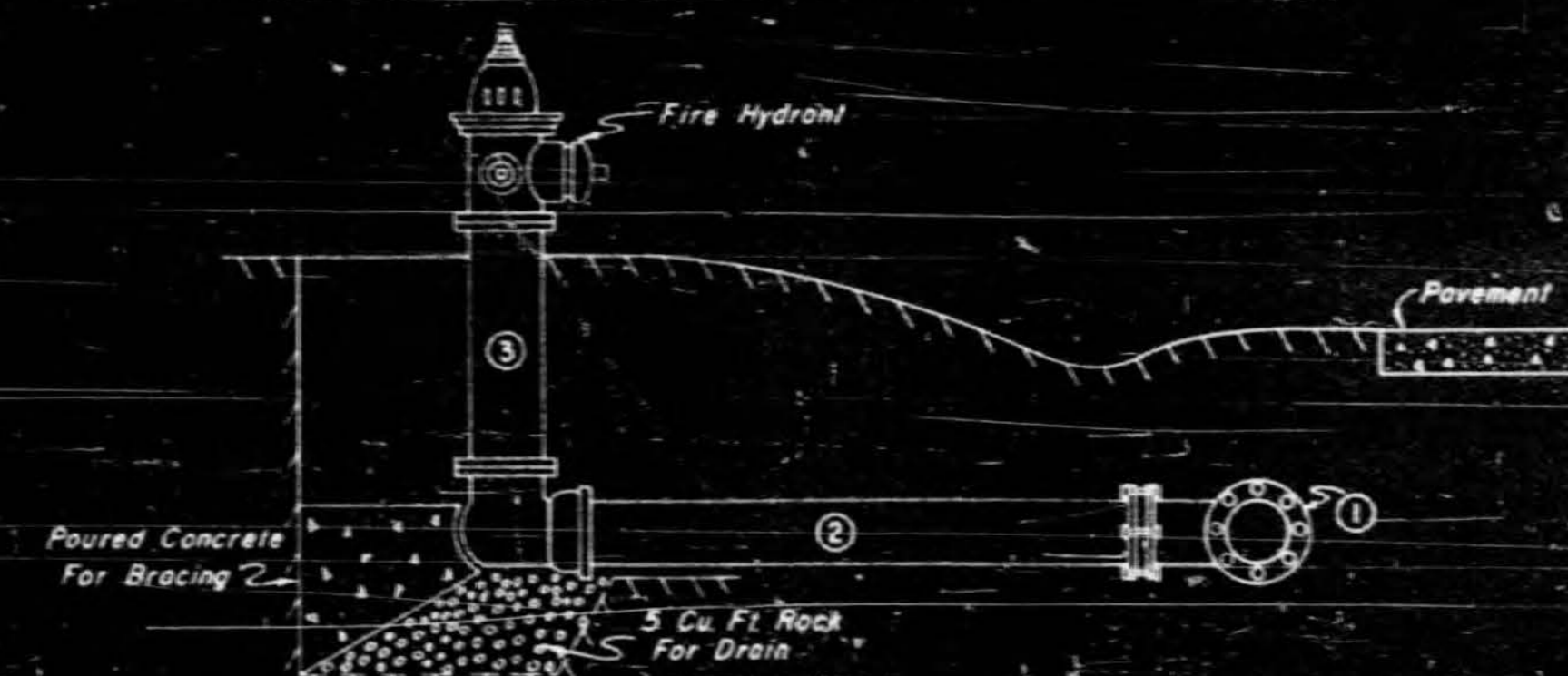
TYPICAL LINE VALVE SETTING, 2" AND OVER



TYPICAL LINE VALVE
INSTALLATION UNDER 2"



TYPICAL AIR VALVE SETTING



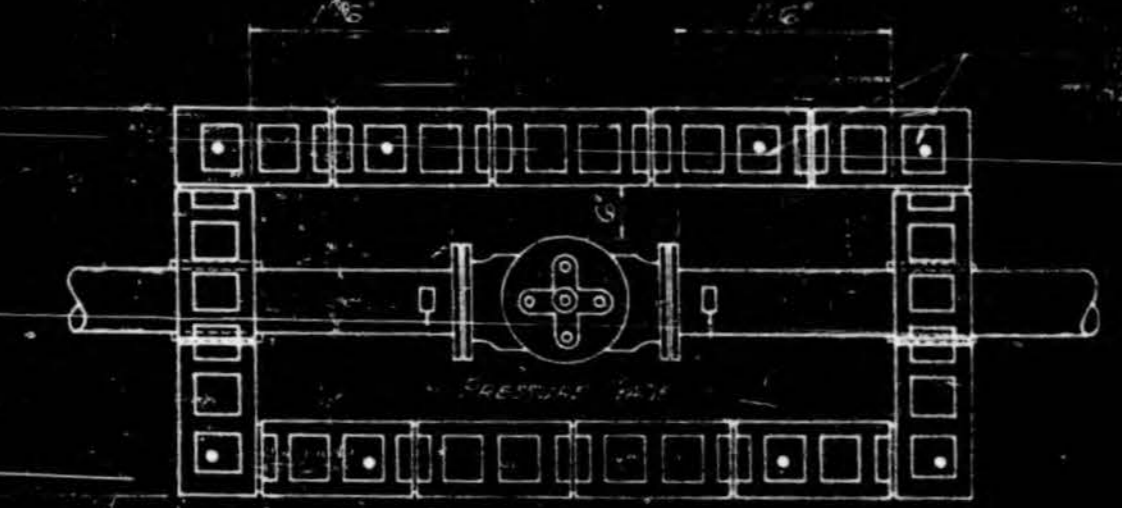
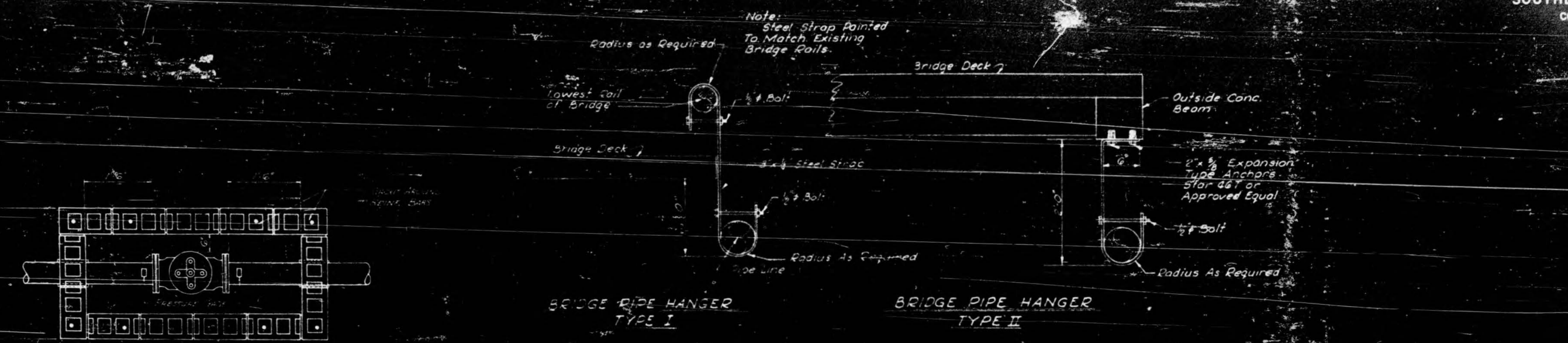
Item	Description	Size	
		6" or Larger Main	4" Main
1	Tee	6 X 6 X 6	4 X 4 X 4
2	Hydrant Branch	6"	4"
3	Fire Hydrant, M.B.H., Fig. 29-T	6" Inlet	4" Inlet

TYPICAL FIRE HYDRANT INSTALLATION

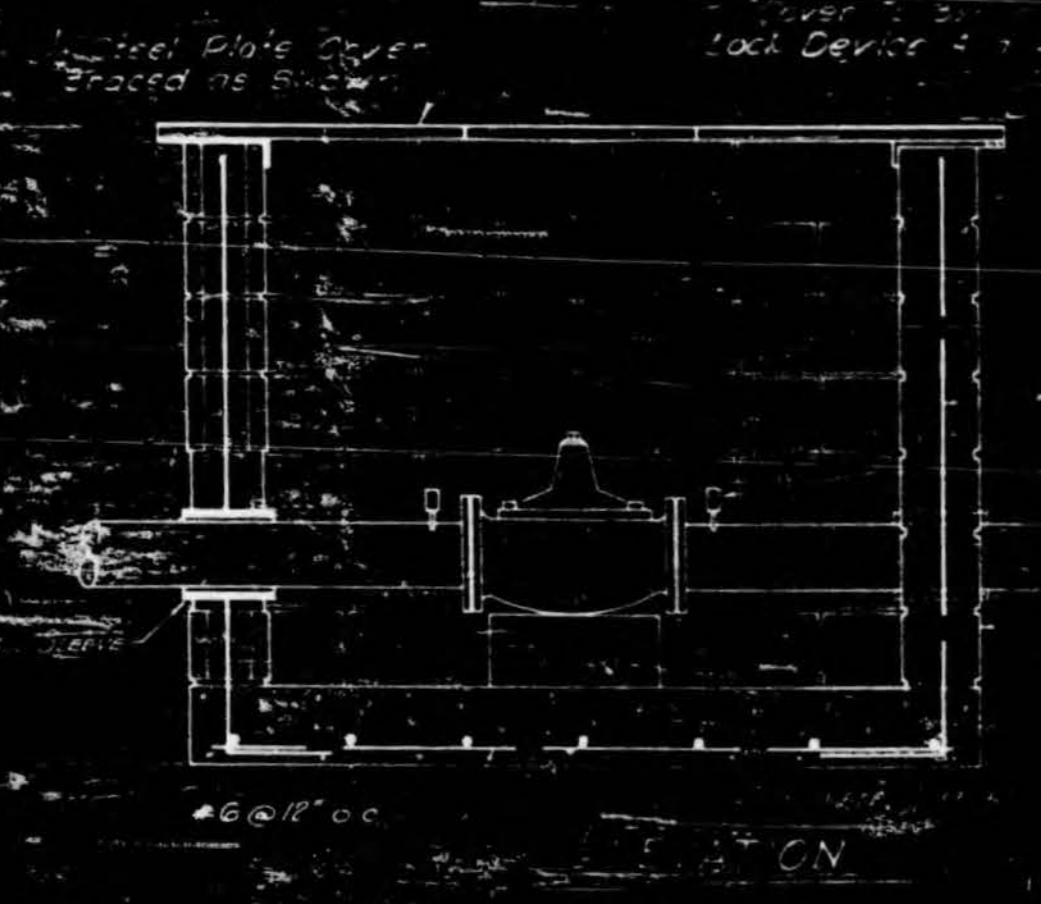


RICHMOND GROVE EXTENSIONS, 1974
MADISON COUNTY, MS.
MISCELLANEOUS DETAILS
3-73-74 R.C.L. 73-74-3

SOUTHERN CONSULTANTS, INC.
CONSULTING ENGINEERS
114 OFFICE PLAZA
JACKSON, MISS.



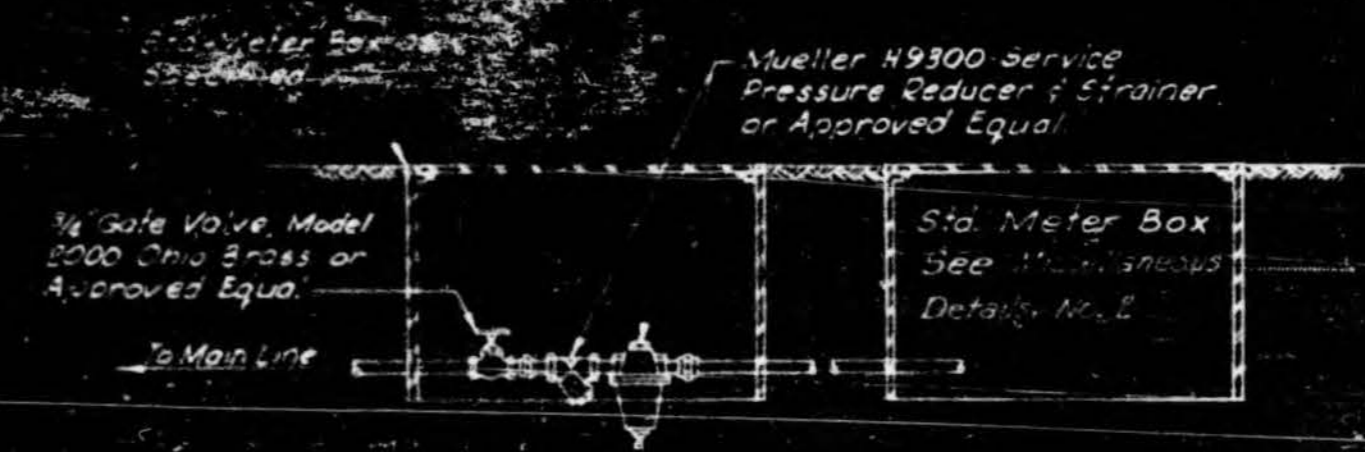
Bridge Hanger Sho. By Approved By
Exposed Pipe Sho. Be Insulated to
Prevent Freezing.
Clearance Between Hangers Shall Not
Exceed 1/2 Centimeter
Not To Scale
9'-0"
3'-0"



SECTION B-B
ALTITUDE VALVE PIT - PLAN & SECTIONS
NOT TO SCALE



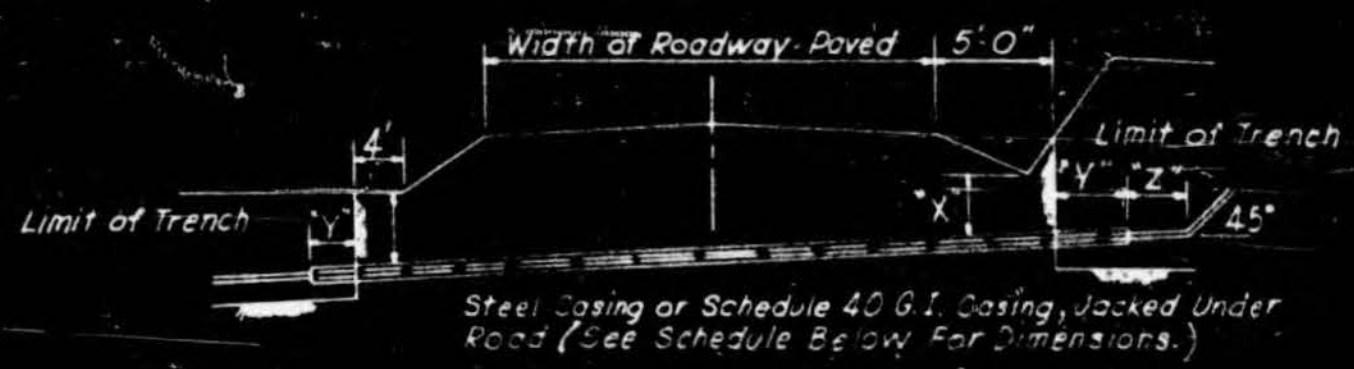
SECTION A-A



RICHMOND GROVE EXTENSIONS, 1976			
MADISON COUNTY, MS.	SCALE	DESIGNED BY	A. R.
MISCELLANEOUS DETAILS NO. 2			
DATE 3-13-76	APPROVED BY R. C. L.	PROJECT NO. 73-156-4	

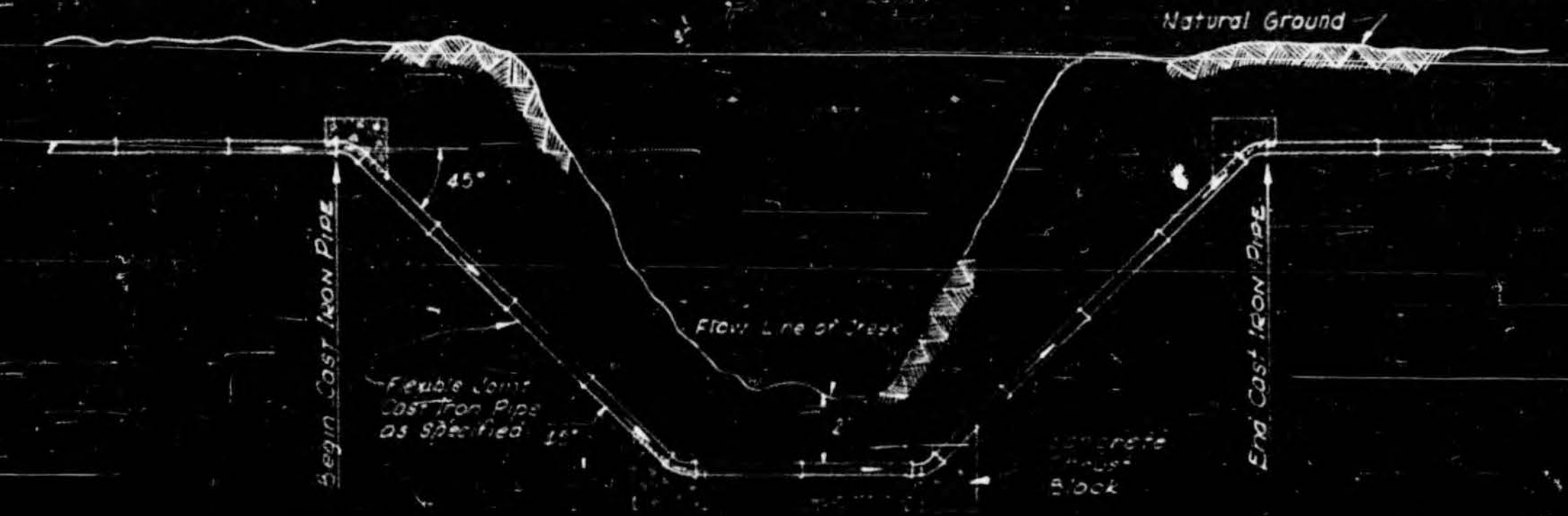
SOUTHERN CONSULTANTS, INC.
 CONSULTING ENGINEERS
 114 OFFICE PLAZA
 JACKSON, MISS.

NOTE:
 1. Pipeline to be located as directed off edge of pavement on paved roads (30 Min. Cover)
 2. Pipeline to be located as directed off edge of roadway on unpaved roads (36 Min. Cover)



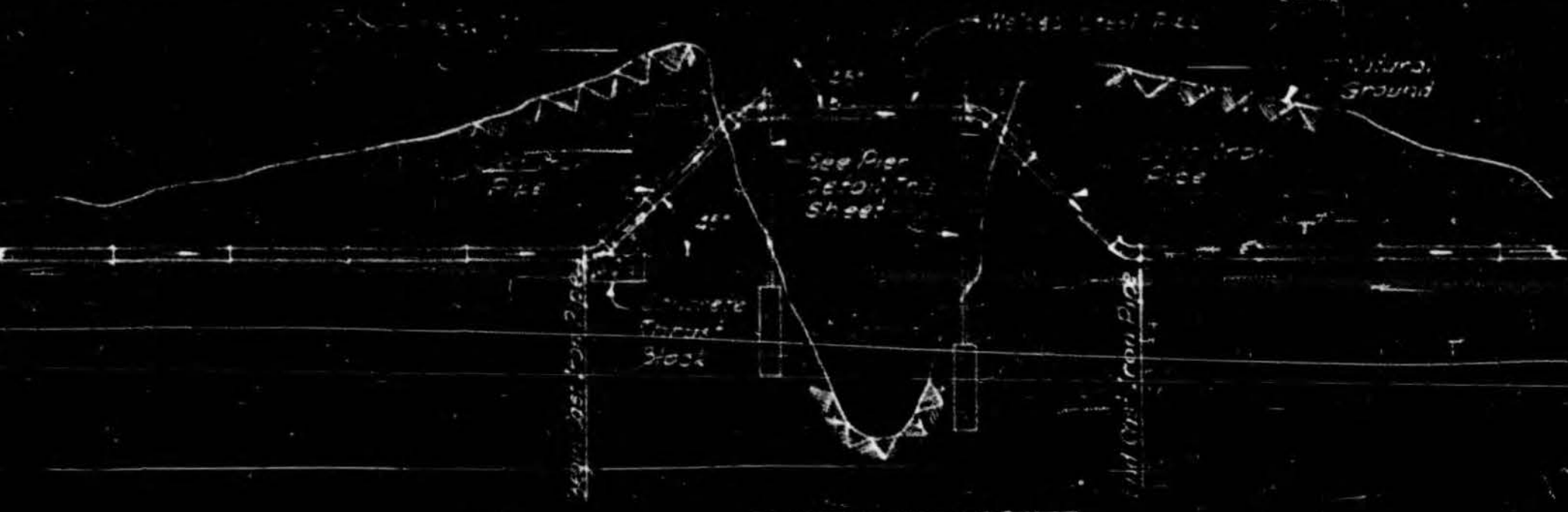
SCHEDULE OF DIMENSIONS					
CROSSING DESIGNATION	SIZE OF LINE	SIZE OF CASING	X	Y	Z*
A	3/4" or 1"	2"	2 Ft	2 Ft	2 Ft
B	1 1/2" or 2 1/2"	4"	3 Ft	2 Ft	4 Ft
C	4"	8"	4 Ft	2 Ft	6 Ft
D	6"	12"	4 Ft	2 Ft	4 Ft
E	8"	16"	4 Ft	2 Ft	4 Ft
F	10"	20"	4 Ft	2 Ft	4 Ft

CROSS-SECTION AT WATER LINE CROSSINGS
 (TYPICAL FOR ALL CROSSINGS)

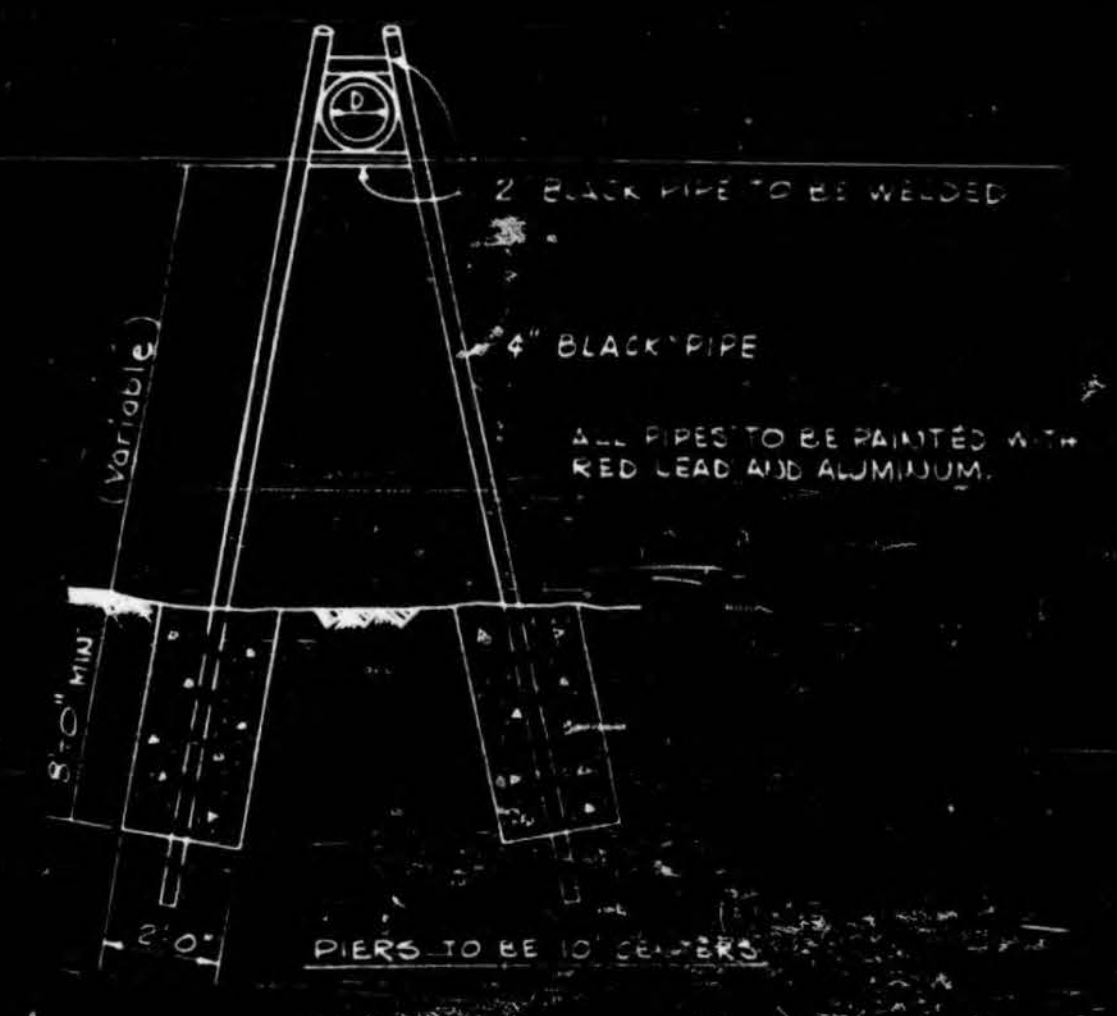


CREEK CROSSING
 TYPE I

- GENERAL NOTES:
- SEE SHEET 05-304 MISC DETAILS FOR JOINTING PIPE FROM EXISTING BRIDGES WHERE PERMITTED.
 - CREEKS WITH LARGER THAN 40' SPAN MUST UTILIZE TYPE I CROSSING.
 - EXPOSED PIPE SHALL BE INSULATED TO PREVENT FREEZING.



CREEK CROSSING
 TYPE II



TYPICAL PIER DETAIL FOR DITCH CROSSINGS



CREEK CROSSING
 TYPE III

NOTE:
 TYPE IV SAME AS TYPE III EXCEPT CONTRACTOR WILL USE STEEL PIPE CASING AND INSTALL WATER MAIN THROUGH CASING.



RICHMOND GROVE EXTENSIONS, 1974		
MADISON COUNTY, MS.	SCALE NONE	DESIGNED BY A.P.
ROAD & STREAM CROSSING DETAILS		
DATE 3-13-74	APPROVED BY R.C.L.	DATE 7-18-74