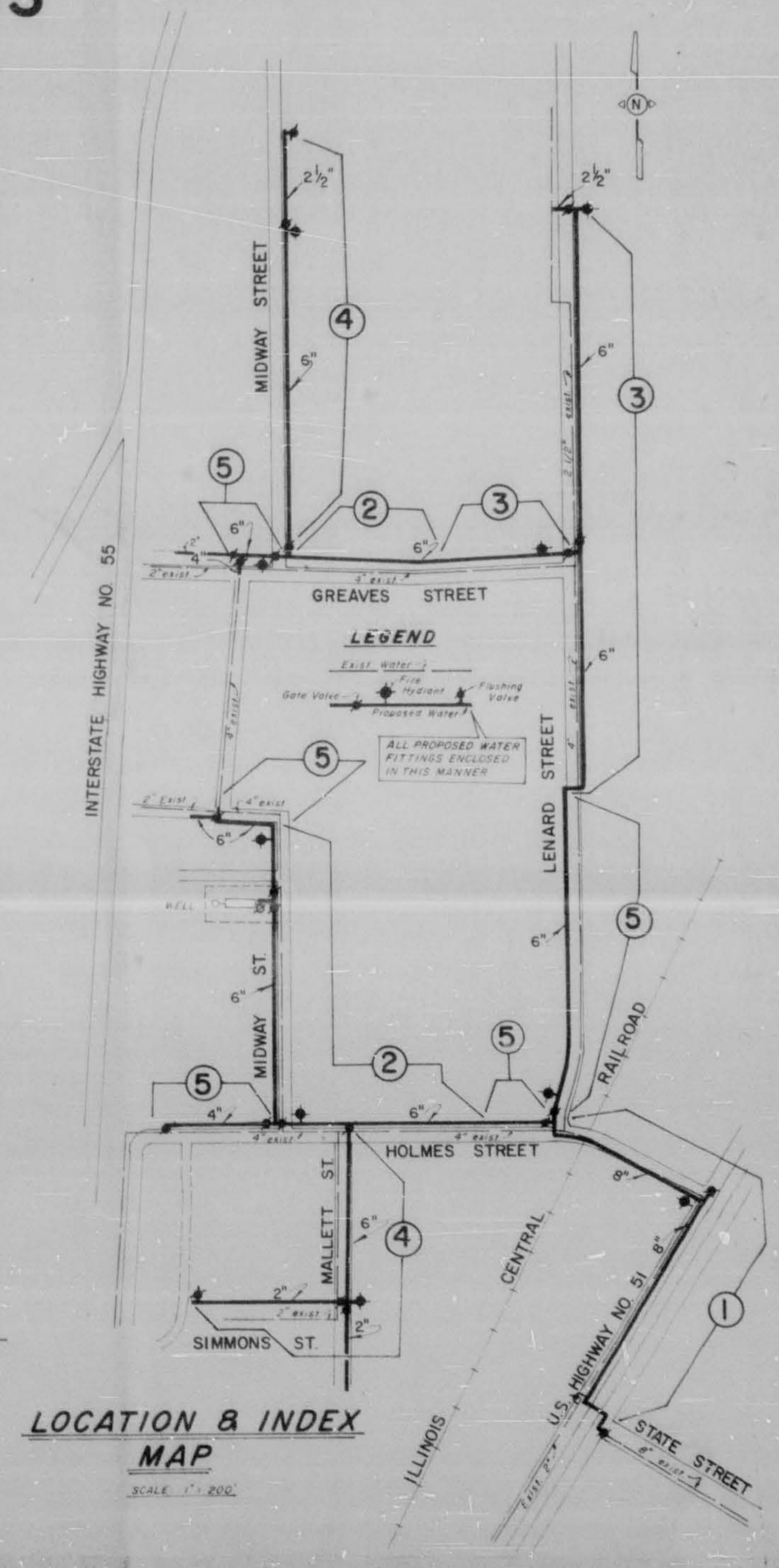


DETAILED PLANS
WATER DISTRIBUTION EXTENSIONS
 (RICHMOND GROVE AREA)
CITY OF RIDGELAND, MISSISSIPPI

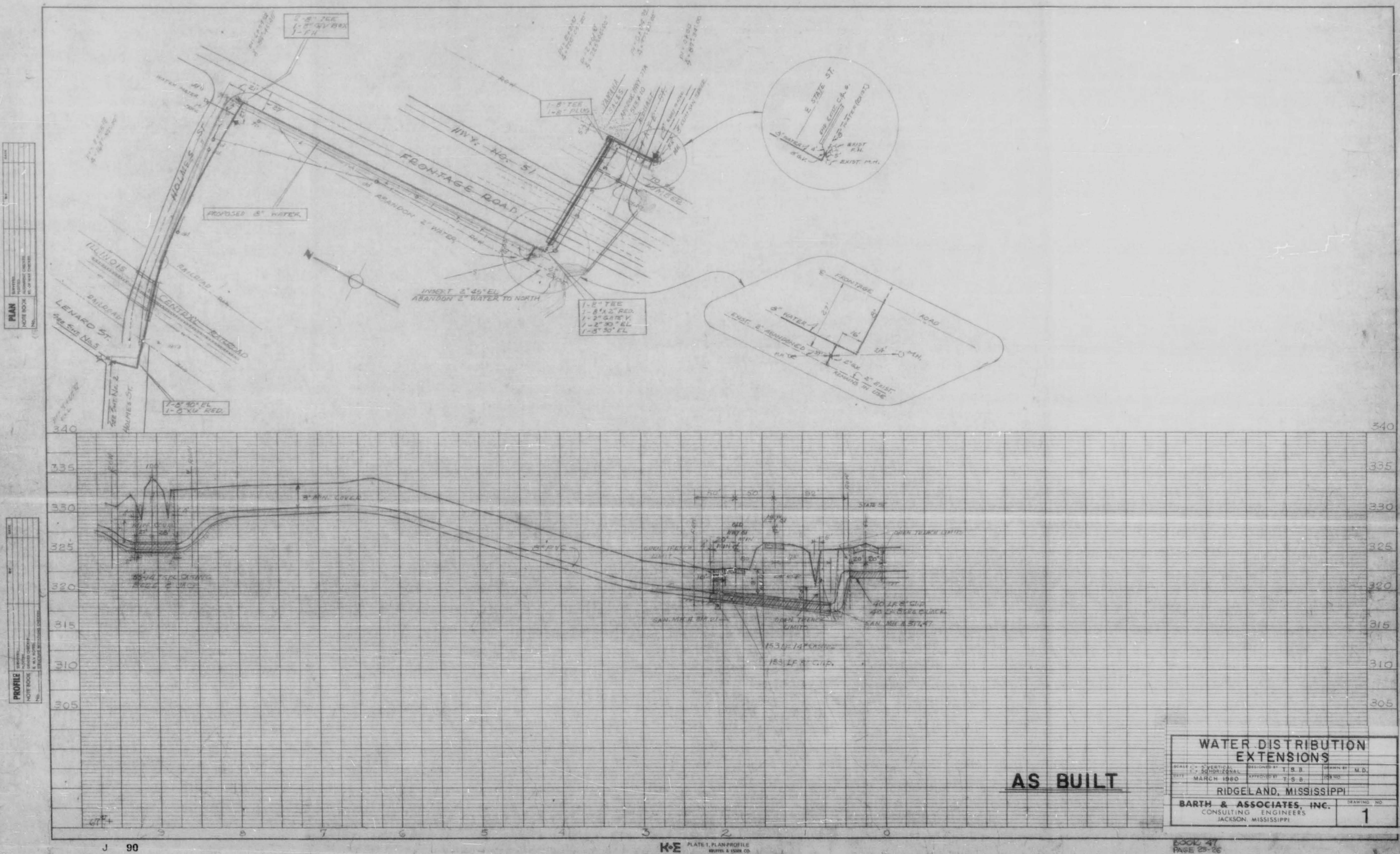
MAYOR
 HITE B. WOLCOTT
BOARD OF ALDERMEN
 JACK MARTIN
 RAYMOND McCLURE
 W.C. McCLELLAN
 DONALD LINDSLEY
 HORACE ROSS
CITY ATTORNEY
 BOB MONTGOMERY

AS BUILT
 5-21-80

4094



BARTH & ASSOCIATES, INC.
 CONSULTING ENGINEERS
 JACKSON, MISSISSIPPI



PLAN
 DATE BOOK
 NO.

PROFILE
 DATE BOOK
 NO.

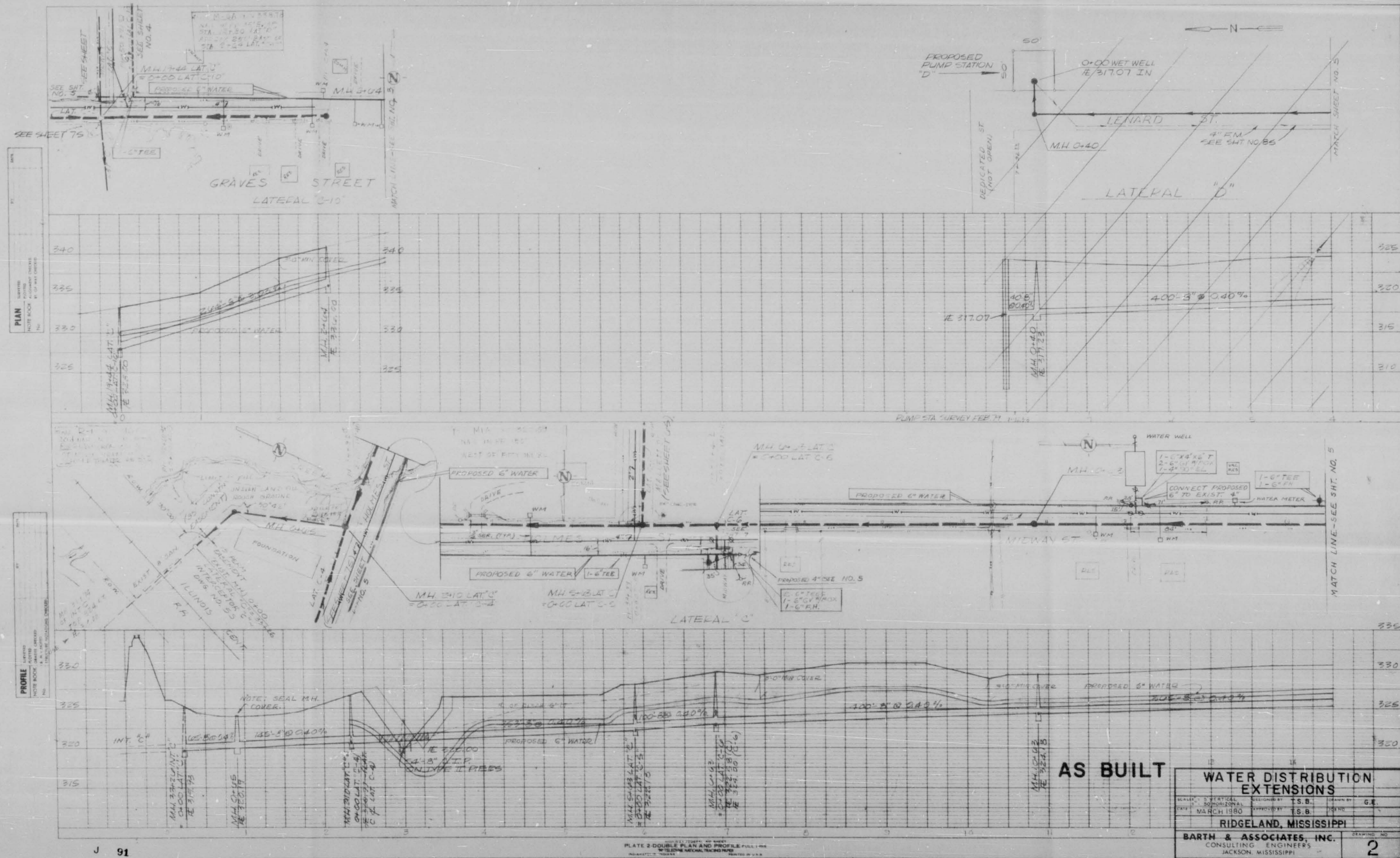
AS BUILT

WATER DISTRIBUTION EXTENSIONS		
SCALE: 1" = 40'	DESIGNED BY: T. S. B.	DRAWN BY: M. D.
DATE: MARCH 1960	APPROVED BY: T. S. B.	PROJECT NO.
RIDGELAND, MISSISSIPPI		
BARTH & ASSOCIATES, INC.		DRAWING NO.
CONSULTING ENGINEERS		1
JACKSON, MISSISSIPPI		

J 90

K-E PLATE 1, PLAN PROFILE
 SOUTH & EAST CO.
 ALL 2004 MADE IN U.S.A.

BOOK 47
 PAGE 29-26



J 91

PLATE 2 DOUBLE PLAN AND PROFILE FULL SIZE



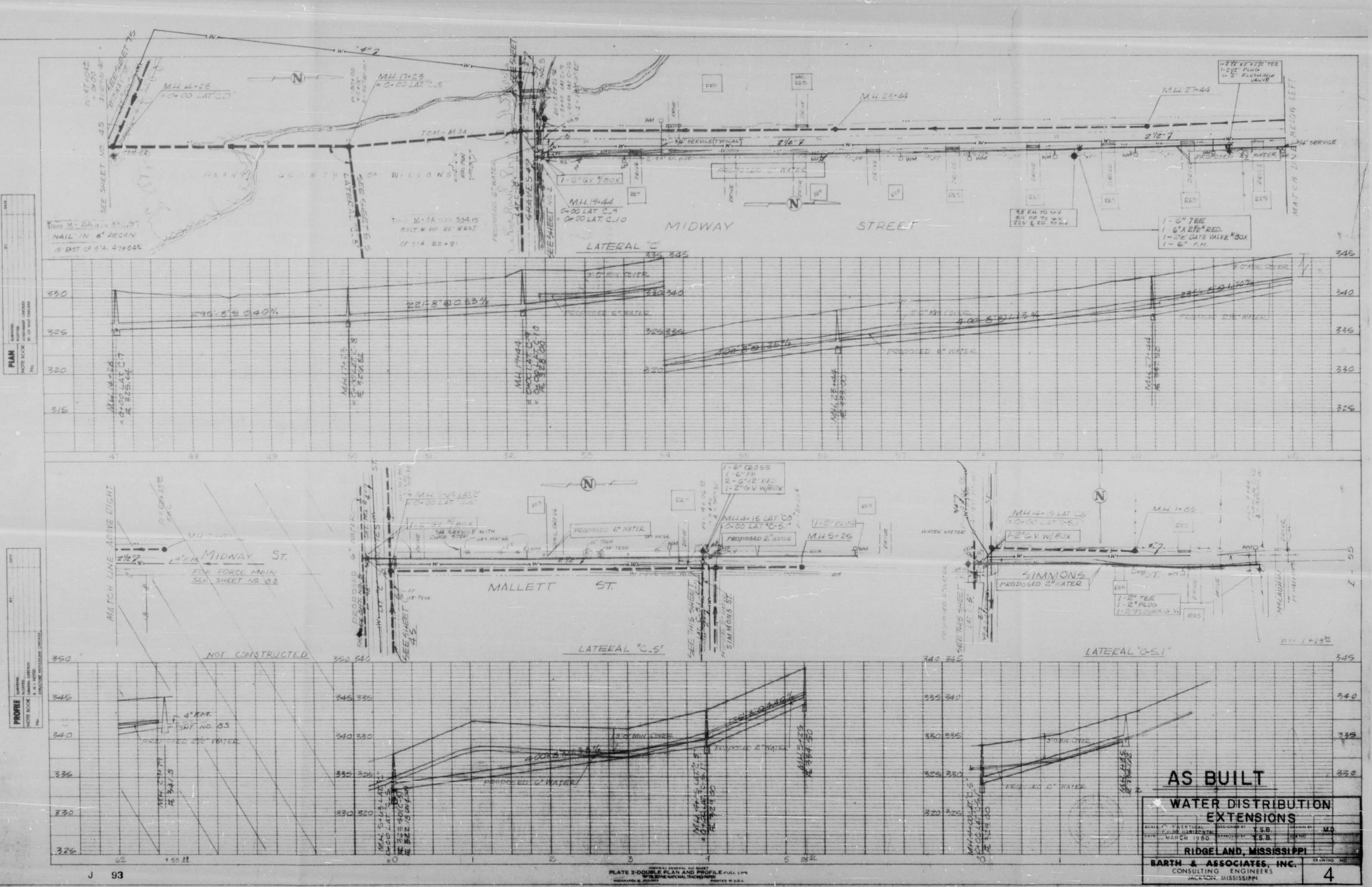
PLAN
 INVERTED
 NOTE BOOK
 BY OF DAY DESIGN

PROFILE
 INVERTED
 NOTE BOOK
 BY OF DAY DESIGN

AS BUILT
WATER DISTRIBUTION
EXTENSIONS

SCALE: AS SHOWN	DATE: MARCH 1980	BY: S.B.
RIDGELAND, MISSISSIPPI		
BARTH & ASSOCIATES, INC.		
CONSULTING ENGINEERS		
JACKSON, MISSISSIPPI		

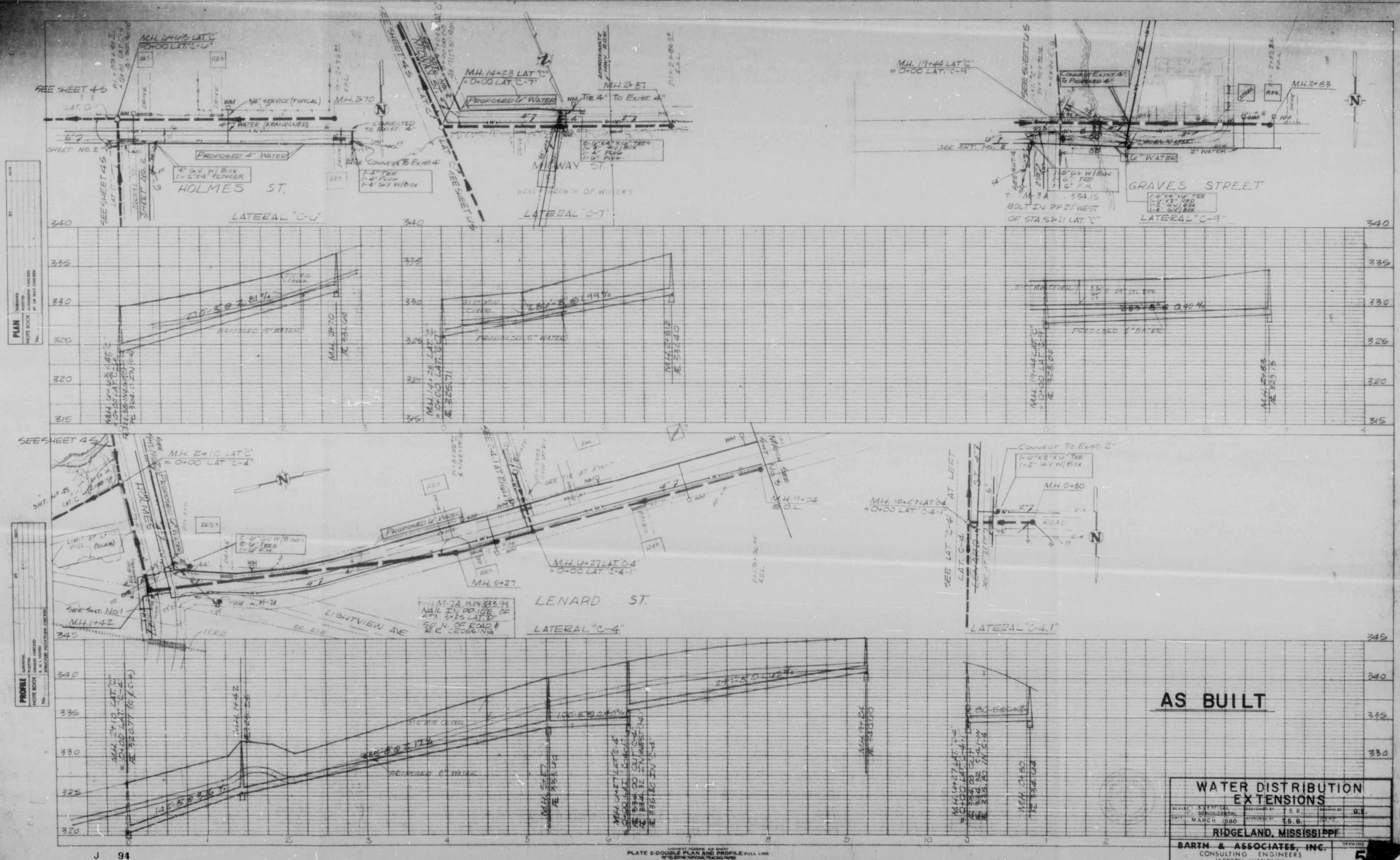
3



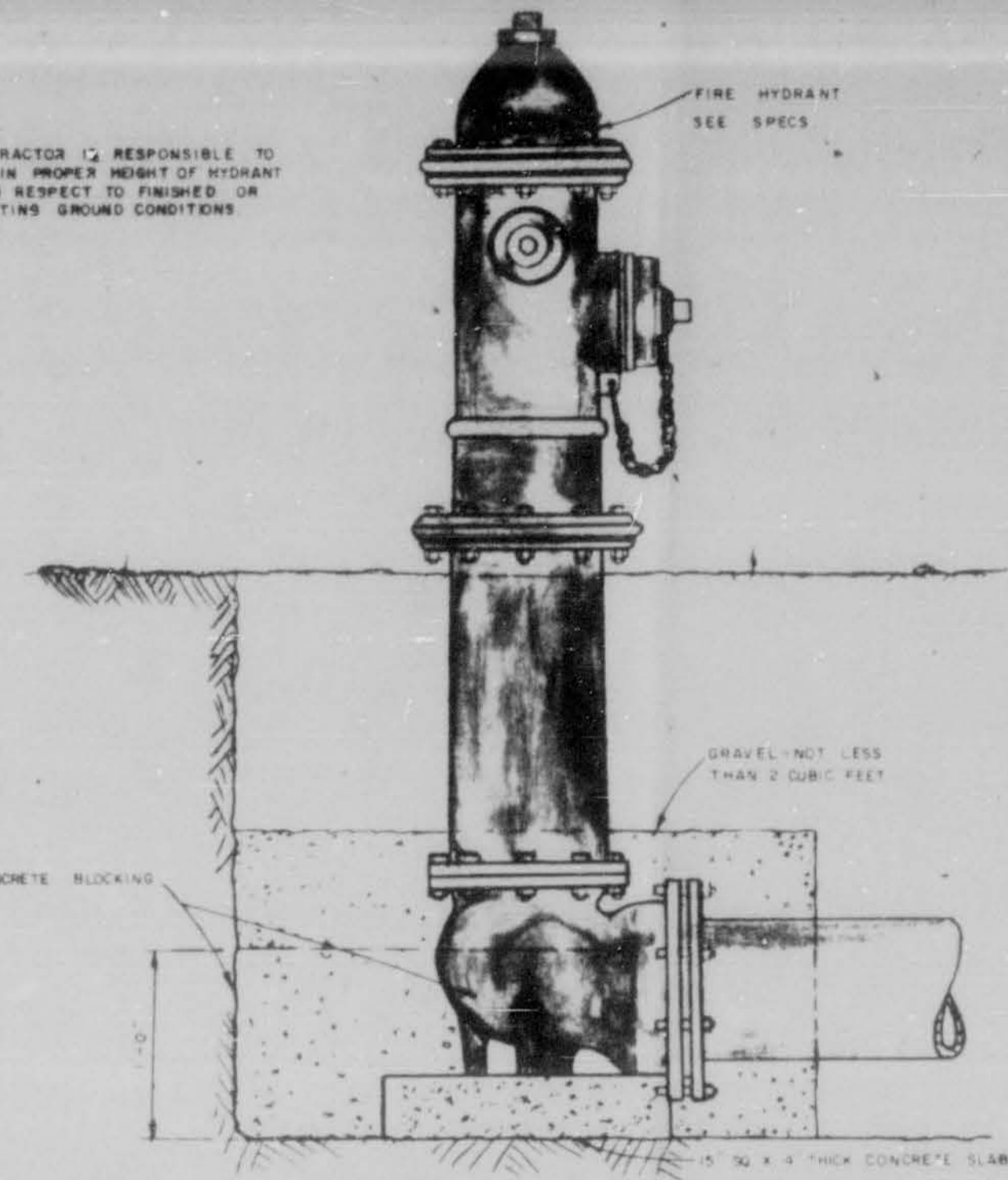
PLAN
 1" = 40'
 NORTH
 NORTH ARROW
 MATCH LINE
 SEE SHEET NO. 93

PROFILE
 1" = 10'
 MATCH LINE
 SEE SHEET NO. 93

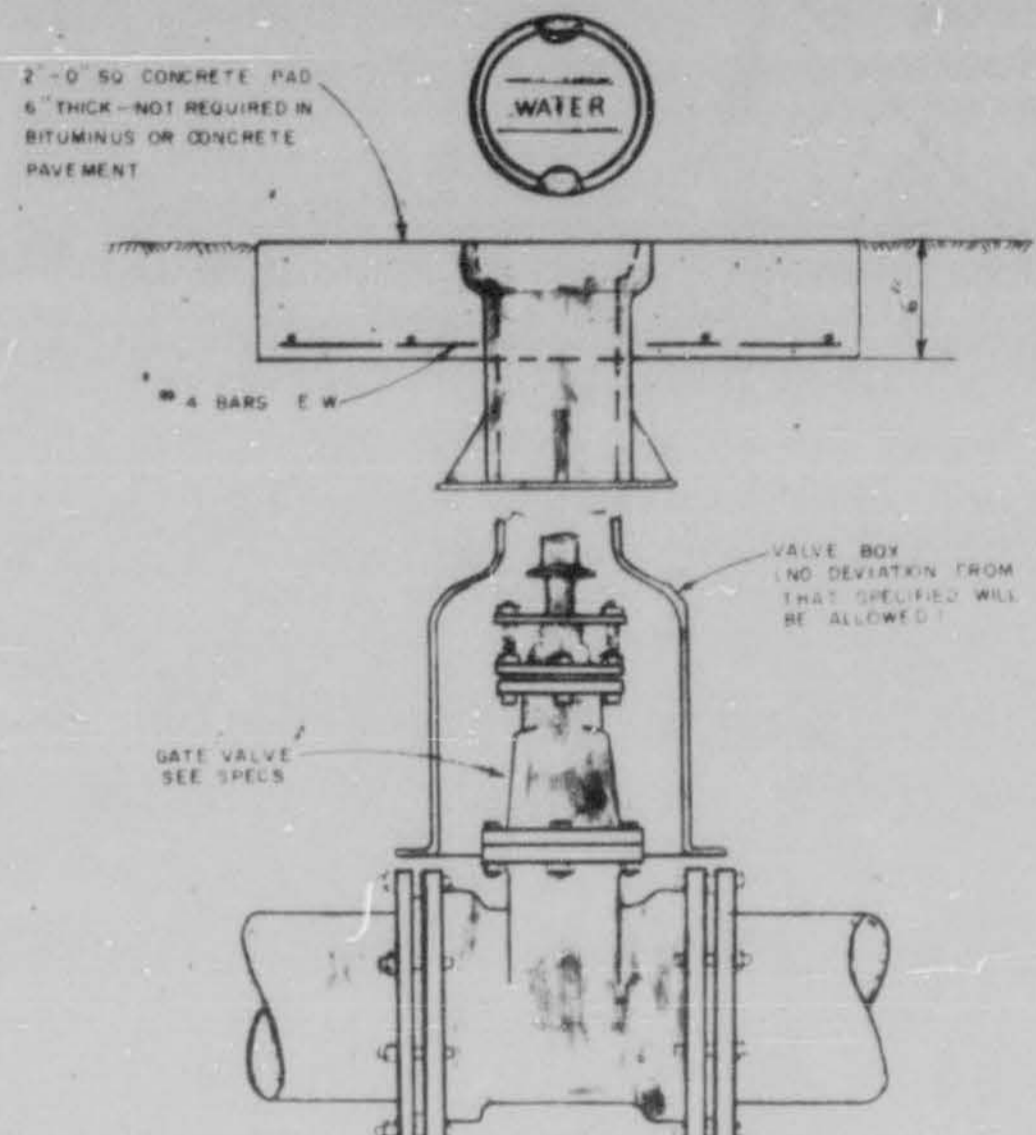
AS BUILT	
WATER DISTRIBUTION EXTENSIONS	
PROJECT LOCATION RIDGE LAND, MISSISSIPPI	DATE MARCH 1980
DESIGNED BY BARTH & ASSOCIATES, INC.	DRAWN BY J.S.B.
CHECKED BY J.S.B.	SCALE AS SHOWN
BARTH & ASSOCIATES, INC. CONSULTING ENGINEERS RIDGE LAND, MISSISSIPPI	
4	



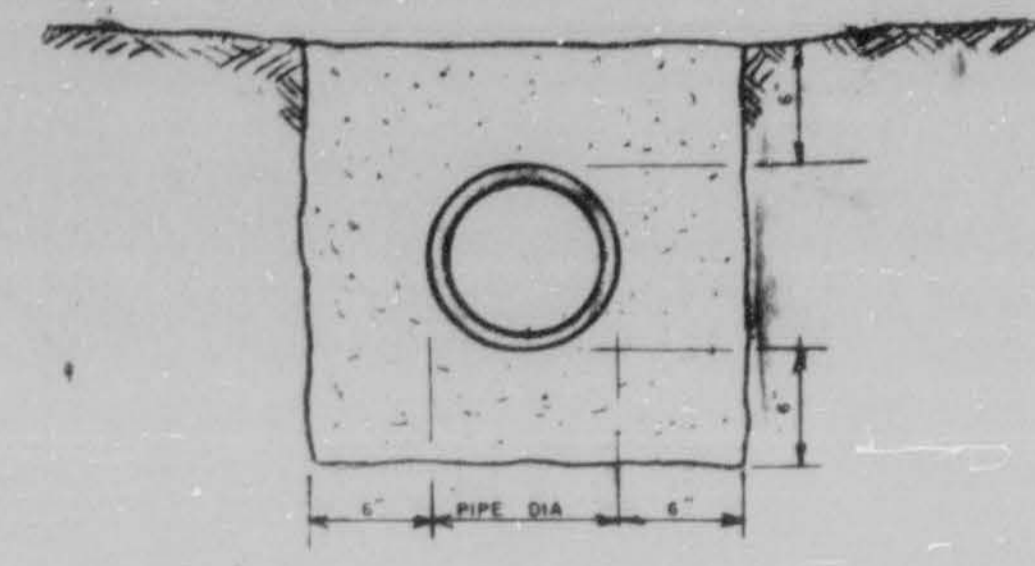
NOTE
CONTRACTOR IS RESPONSIBLE TO
OBTAIN PROPER HEIGHT OF HYDRANT
WITH RESPECT TO FINISHED OR
EXISTING GROUND CONDITIONS



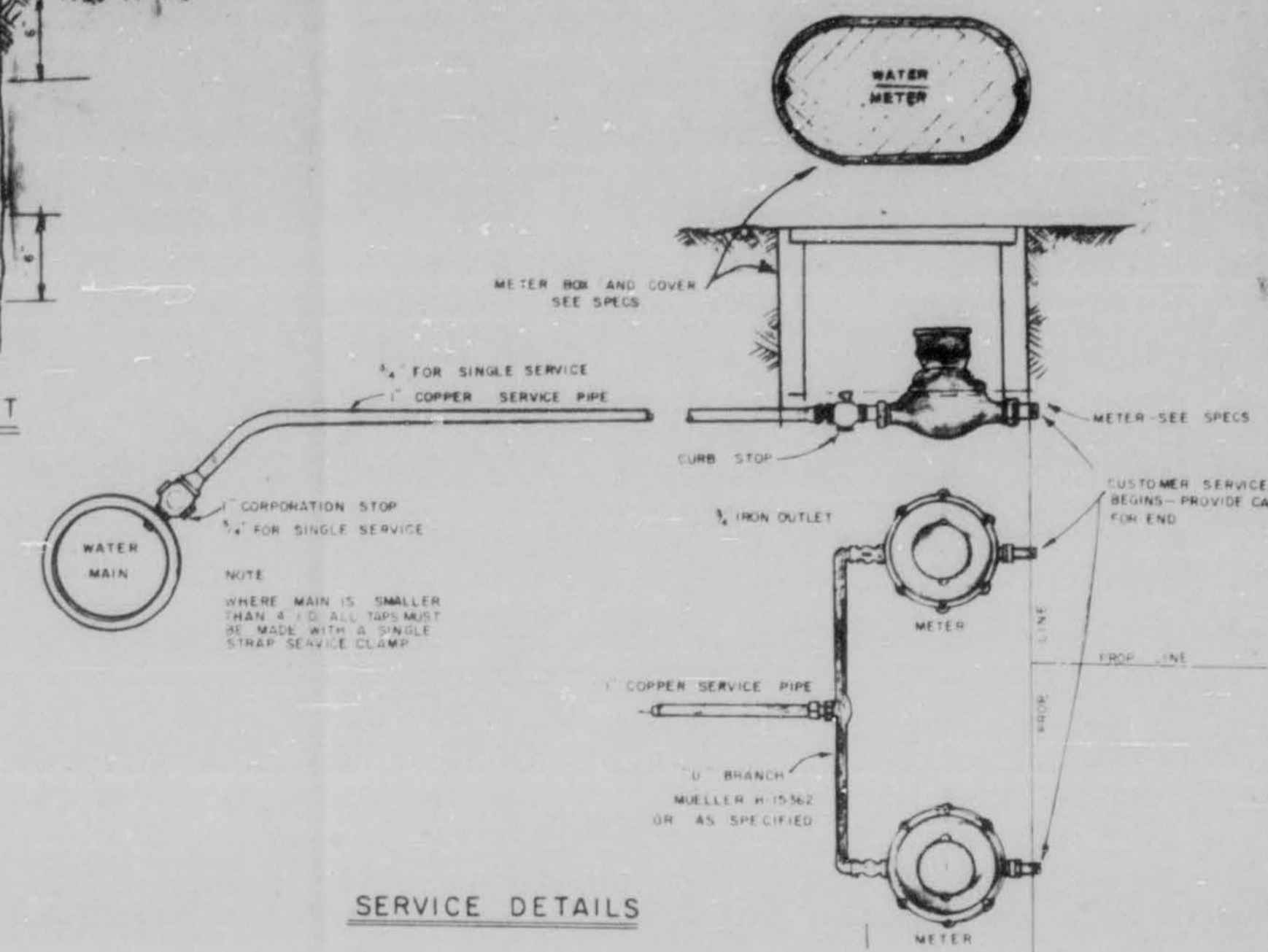
FIRE HYDRANT DETAIL



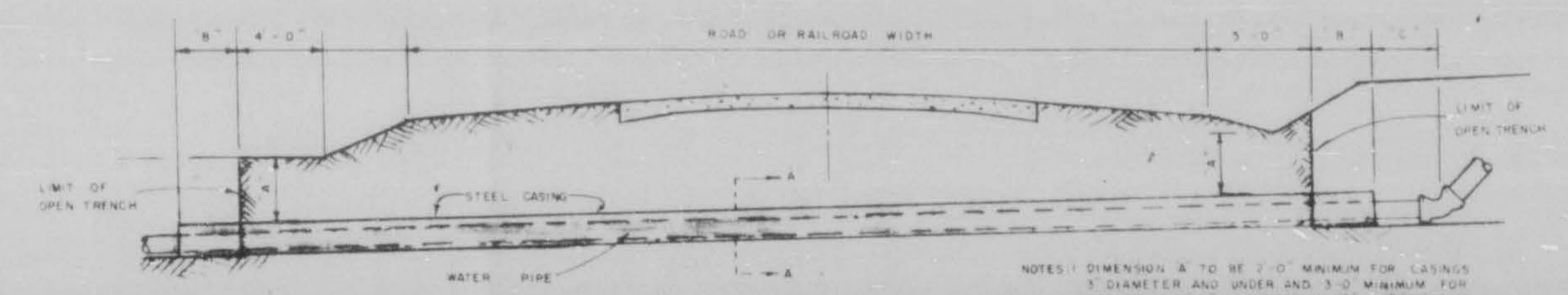
VALVE & BOX DETAIL



PIPE ENCASEMENT

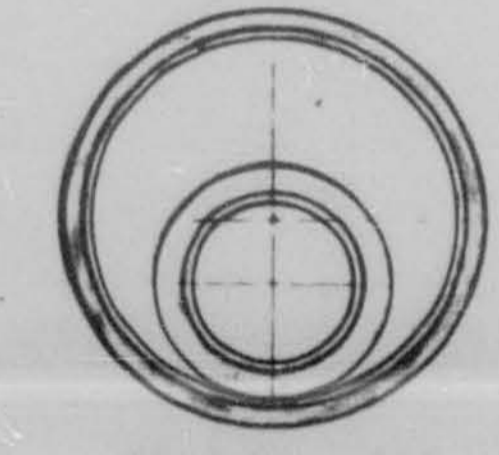


SERVICE DETAILS

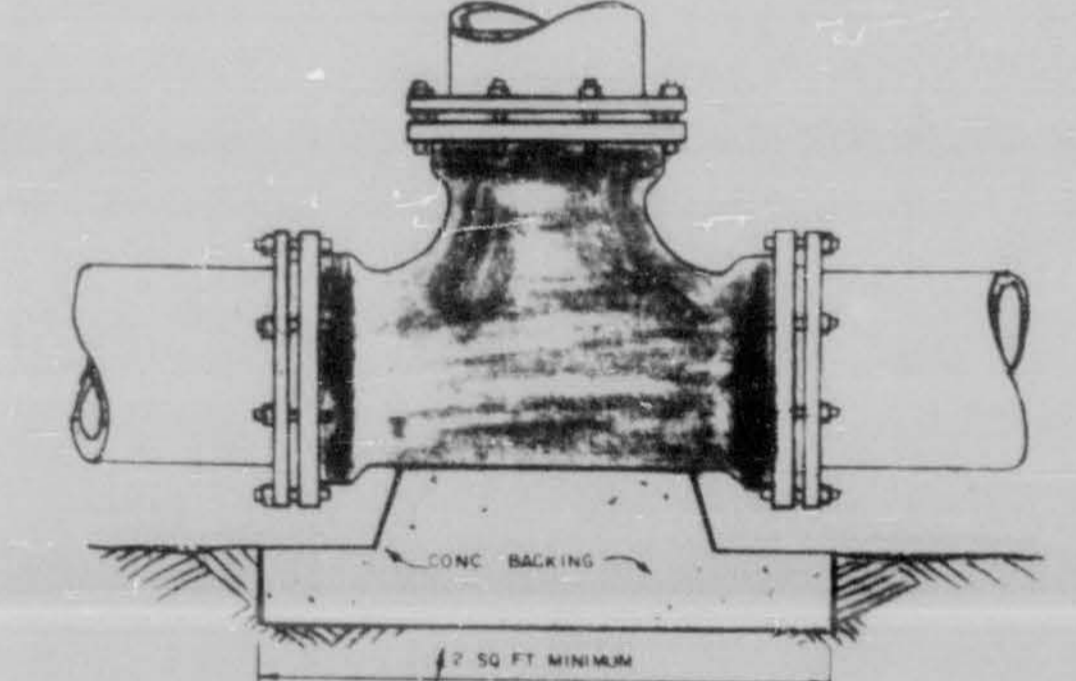


CROSSING DETAIL

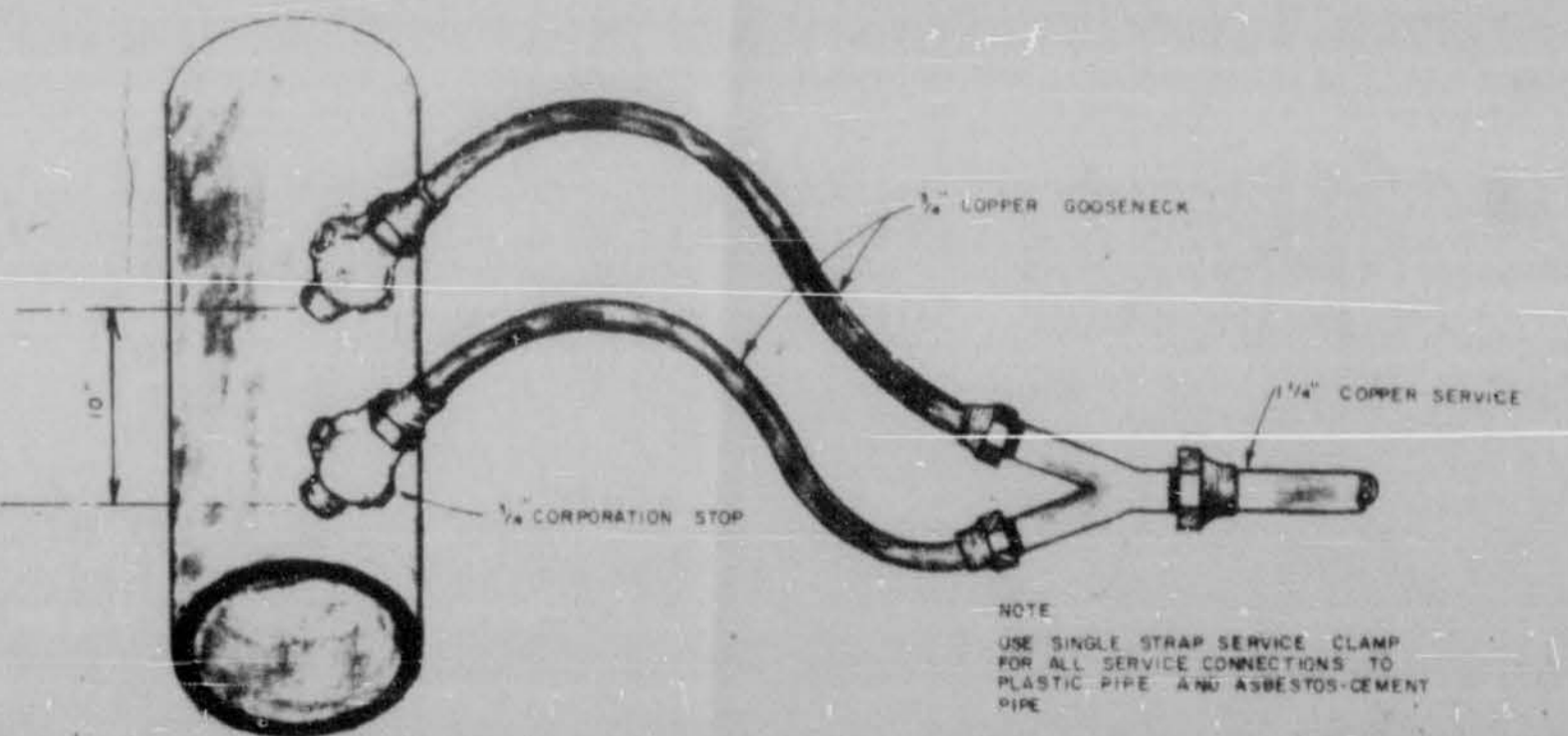
NOTES:
1. DIMENSION A TO BE 3'-0" MINIMUM FOR CASING 3" DIAMETER AND UNDER AND 3'-0" MINIMUM FOR CASINGS OVER 3" DIMENSIONS B AND C TO BE 2'-0" MINIMUM FOR LINES 9" DIAMETER AND UNDER AND A, D MINIMUM FOR LINES OVER 9"
2. ENCASEMENTS TO BE INSTALLED UNDER THE ROAD BY MEANS OF HELMETS, THROUGHS OR BY JET BORING & HOLE THAT WILL RELIEVE THE CASING WITH 300 PSI CORRUGATED METAL OR STEEL CASING WITH OPTIONAL FOR RAILROAD CROSSING HIGHWAY CASING OR STEEL PIPE ONLY
3. 8" DIMENSION WILL BE PAID FOR AS 6" IN CASING 8" BORE OR JACKED CASING TO BE PAID FOR TO LIMIT OF OPEN TRENCH ONLY
4. WHERE THERE IS CONFLICT WITH THE PLANT AND HIGHWAY AND RAILROAD CROSSING PERMITS THE APPROVED PERMITS WILL GOVERN



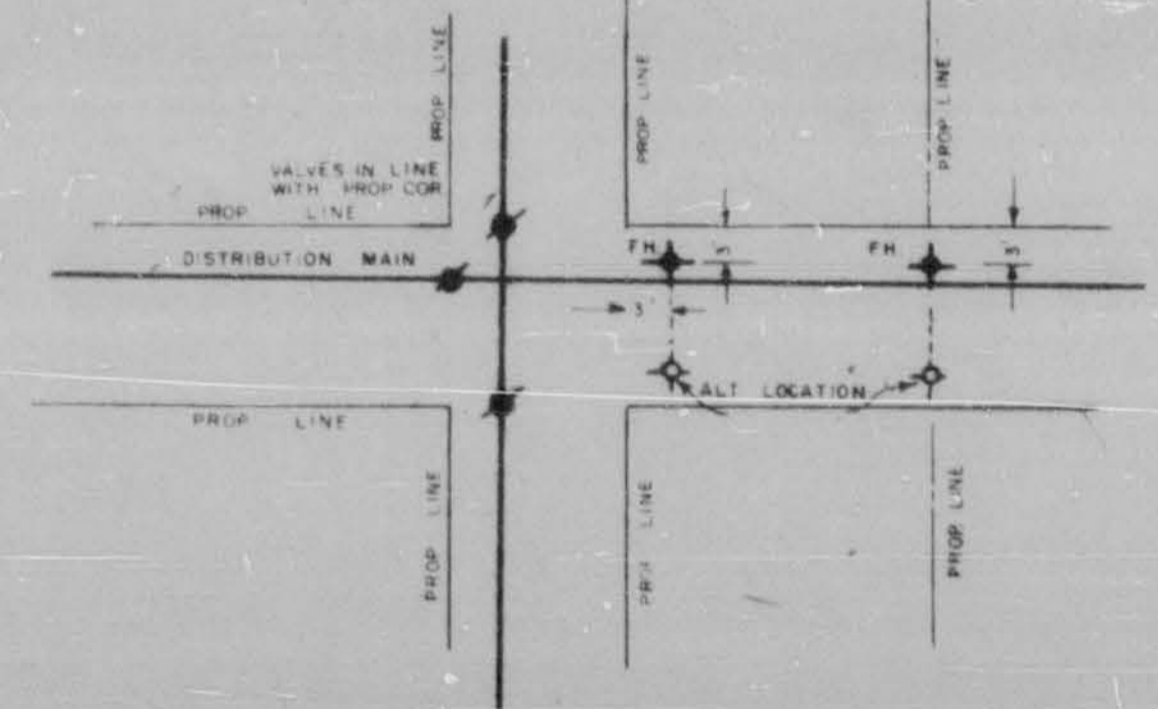
SECTION A-A



BEND & TEE DETAILS



SERVICE CONNECTIONS



TYPICAL DETAIL OF VALVE AND HYDRANT LOCATIONS

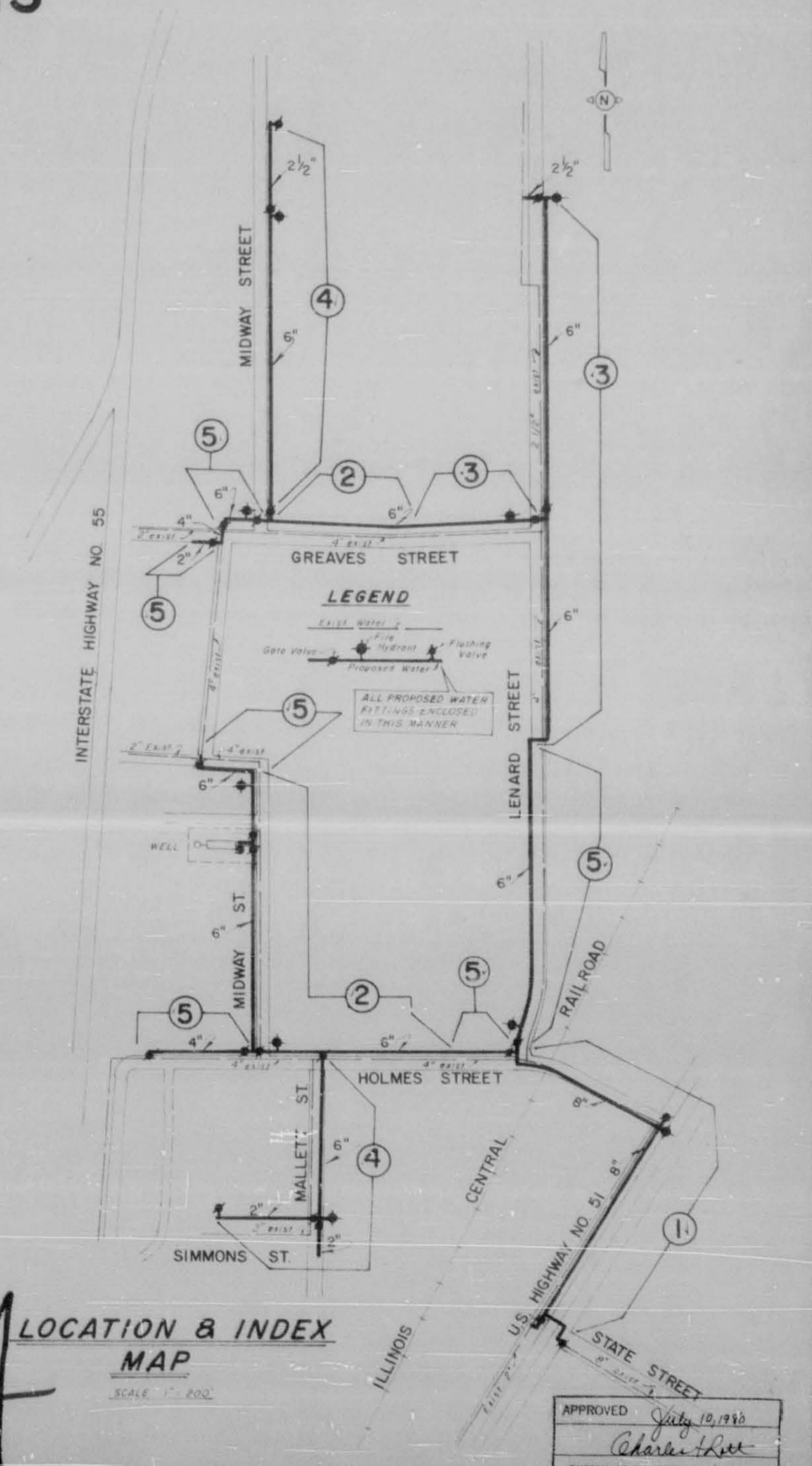
GENERAL NOTES
1. NO ADDITIONAL COMPENSATION WILL BE ALLOWED FOR USE OF ADDITIONAL FITTINGS WHERE UNDERGROUND OBSTACLES ARE ENCOUNTERED WITHOUT WRITTEN APPROVAL OF THE ENGINEER
2. ALL WATER LINES WITHIN P.D.M. LIMITS OF HIGHWAY AND RAILROADS ARE TO BE INSTALLED IN STRICT ACCORDANCE WITH THE APPROVED PERMITS
3. CONTRACTOR WILL COORDINATE THE LOCATION OF EXISTING UTILITIES WITH THE PROPER AUTHORITIES

STANDARD DETAIL SHEET			
WATER			
SCALE NO SCALE	DESIGNED BY T S B	DRAWN BY	
DATE	APPROVED BY T S B	JOB NO.	
RIDGELAND, MISS.			
BARTH & ASSOCIATES, INC.			DRAWING NO.
CONSULTING ENGINEERS			SD-1
JACKSON, MISSISSIPPI			

DETAILED PLANS
WATER DISTRIBUTION EXTENSIONS
 (RICHMOND GROVE AREA)
CITY OF RIDGELAND, MISSISSIPPI

MAYOR
 HITE B. WOLCOTT
 BOARD OF ALDERMEN

 JACK MARTIN
 RAYMOND McCLURE
 W.C. McCLELLAN
 DONALD LINDSLEY
 HORACE ROSS
 CITY ATTORNEY
 BOB MONTGOMERY



BARTH & ASSOCIATES, INC.
 CONSULTING ENGINEERS
 JACKSON, MISSISSIPPI

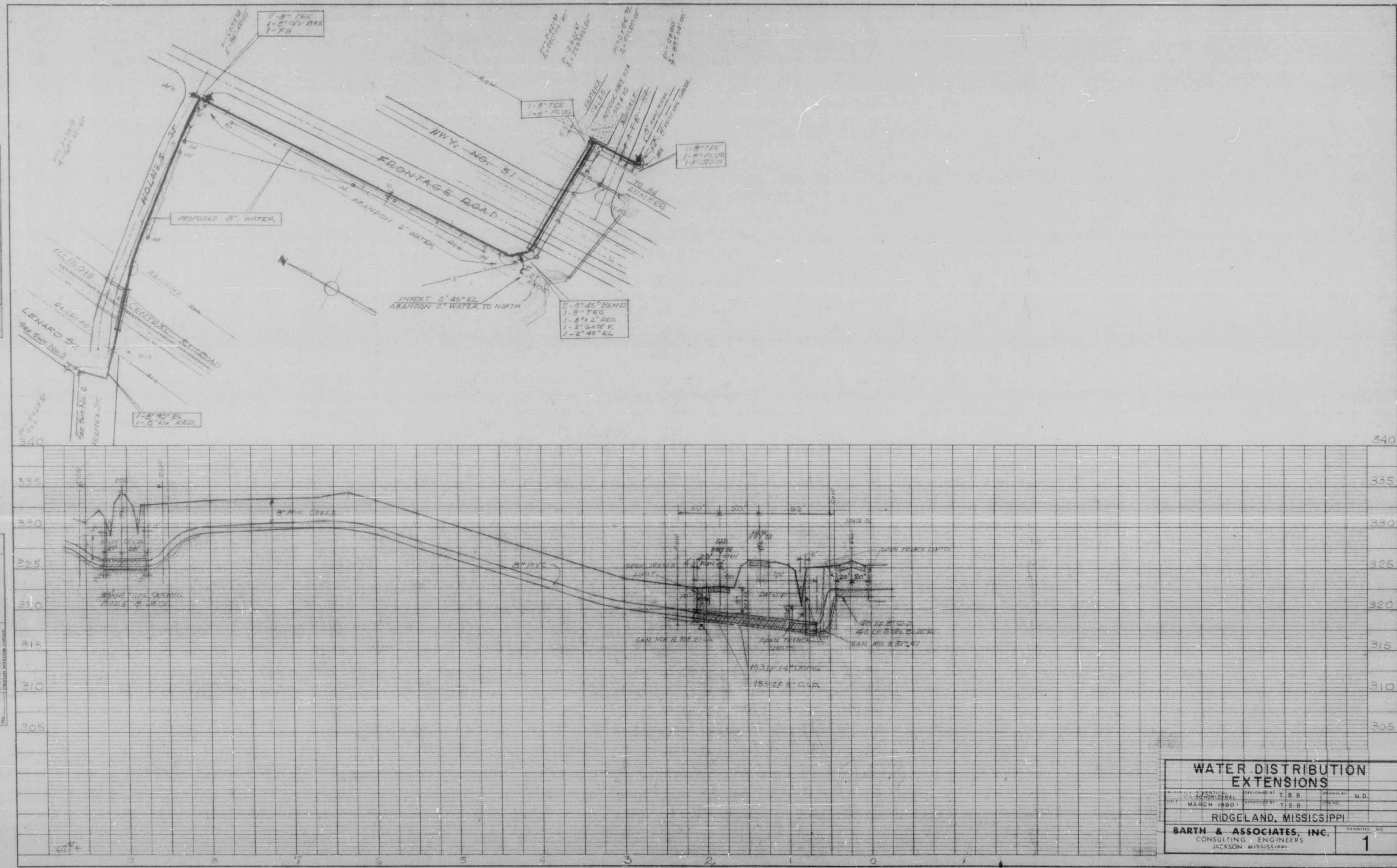
4094

**LOCATION & INDEX
 MAP**
 SCALE 1" = 200'

APPROVED *July 19, 1955*
Charles H. Lee
 BUREAU OF ENVIRONMENTAL HEALTH
 MISSISSIPPI STATE BOARD OF HEALTH

PLAN
 DATE: _____
 DRAWN BY: _____
 CHECKED BY: _____
 NO. _____

PROFILE
 DATE: _____
 DRAWN BY: _____
 CHECKED BY: _____
 NO. _____

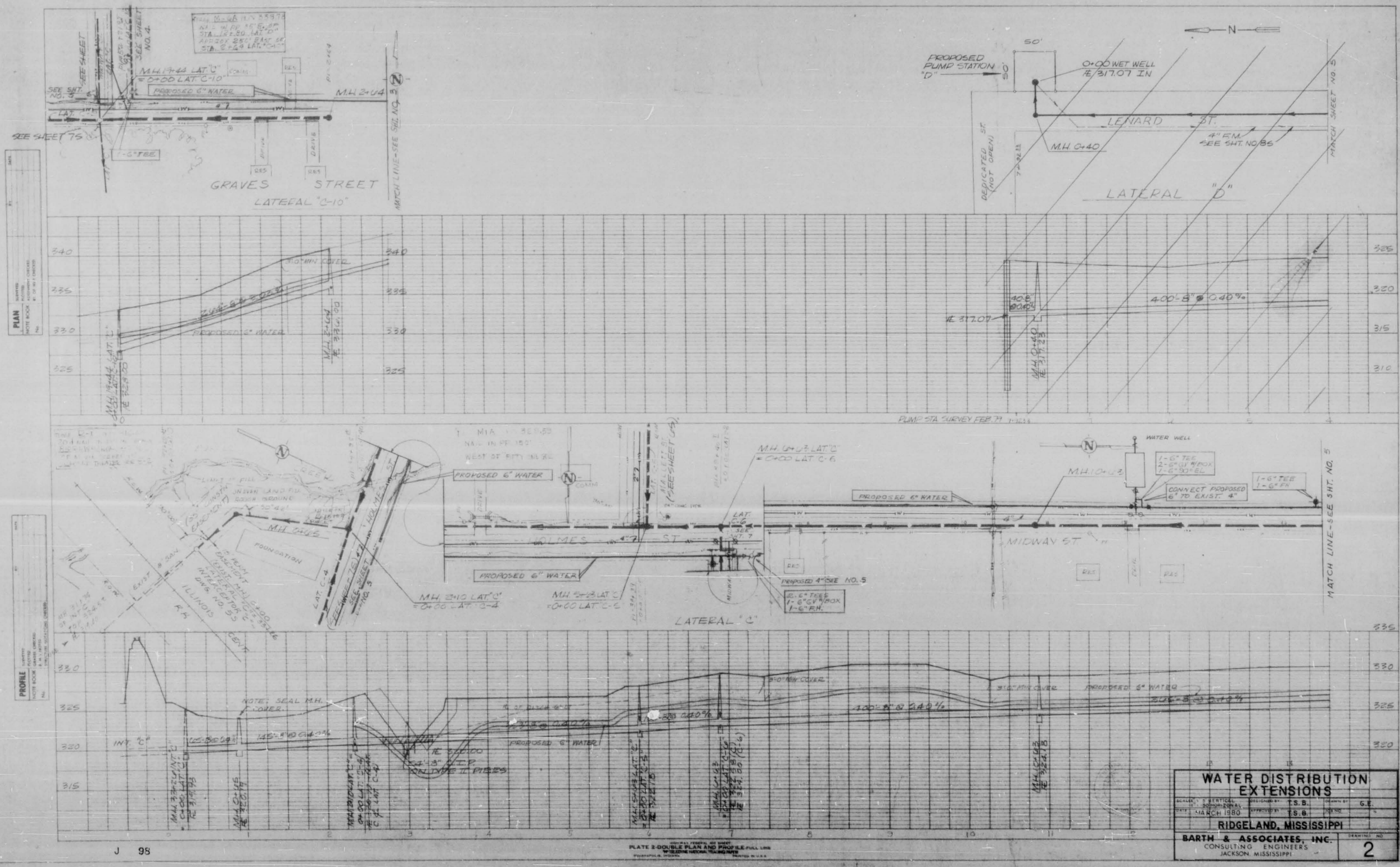


J 97

K&E PLATE 1, PLAN/PROFILE
 48 7002 MADE IN U.S.A.

WATER DISTRIBUTION EXTENSIONS
 DATE: _____ DESIGNED BY: T.S.B. DRAWN BY: M.D.
 CHECKED BY: _____ APPROVED BY: T.S.B.
 MARCH 1980
 RIDGELAND, MISSISSIPPI
BARTH & ASSOCIATES, INC.
 CONSULTING ENGINEERS
 JACKSON, MISSISSIPPI
 DRAWING NO. **1**

BOOK 41
 PAGE 65-66



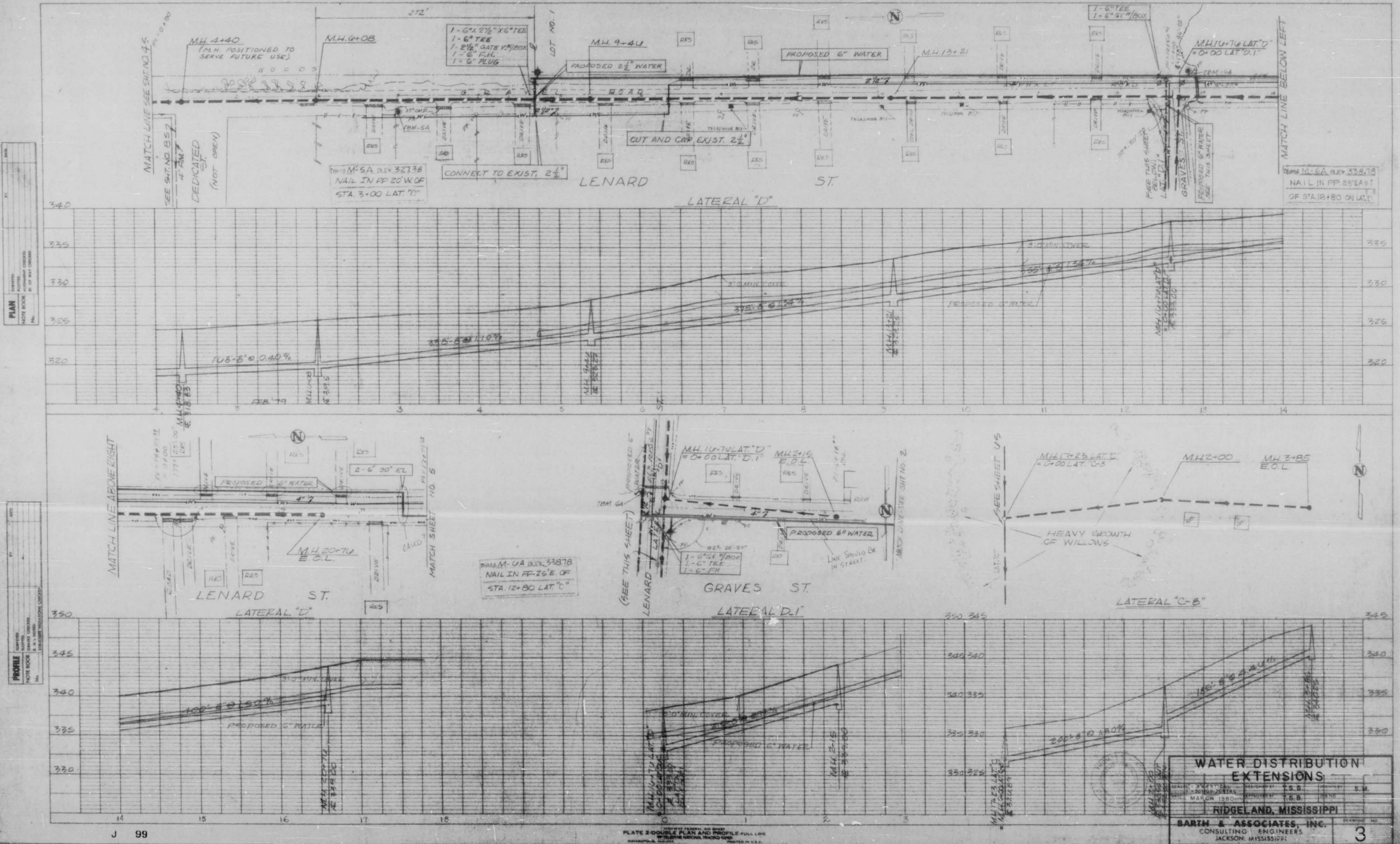
PLAN
 DATE: 10/1/50
 DRAWN BY: J. B. BARTH
 CHECKED BY: J. B. BARTH

PROFILE
 DATE: 10/1/50
 DRAWN BY: J. B. BARTH
 CHECKED BY: J. B. BARTH

J 95

PLATE 2-DIST. EXT. (SEE SHEET NO. 1)
 W. B. BARTH & ASSOCIATES, INC.
 JACKSON, MISSISSIPPI

WATER DISTRIBUTION EXTENSIONS	
SCALE: VERTICAL 1" = 10'	SCALE: HORIZONTAL 1" = 40'
DATE: 10/1/50	PROJECT: RIDGELAND, MISSISSIPPI
RIDGE LAND, MISSISSIPPI	
BARTH & ASSOCIATES, INC. CONSULTING ENGINEERS JACKSON, MISSISSIPPI	
DRAWING NO.	2



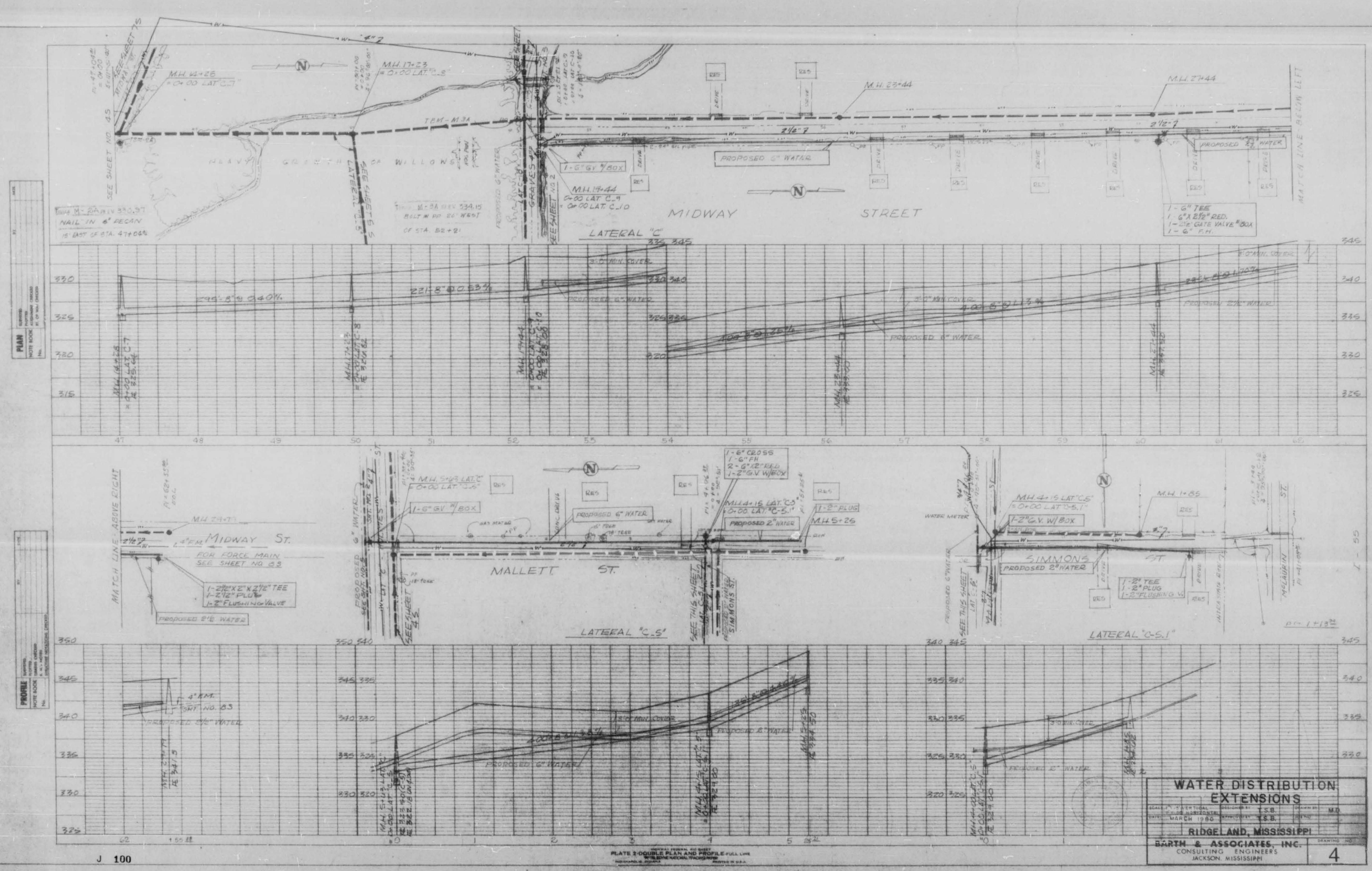
PLAN
 SHEET NO. 3
 DATE: 12/15/50
 BY: J. B. BARTH

PROFILE
 SHEET NO. 3
 DATE: 12/15/50
 BY: J. B. BARTH

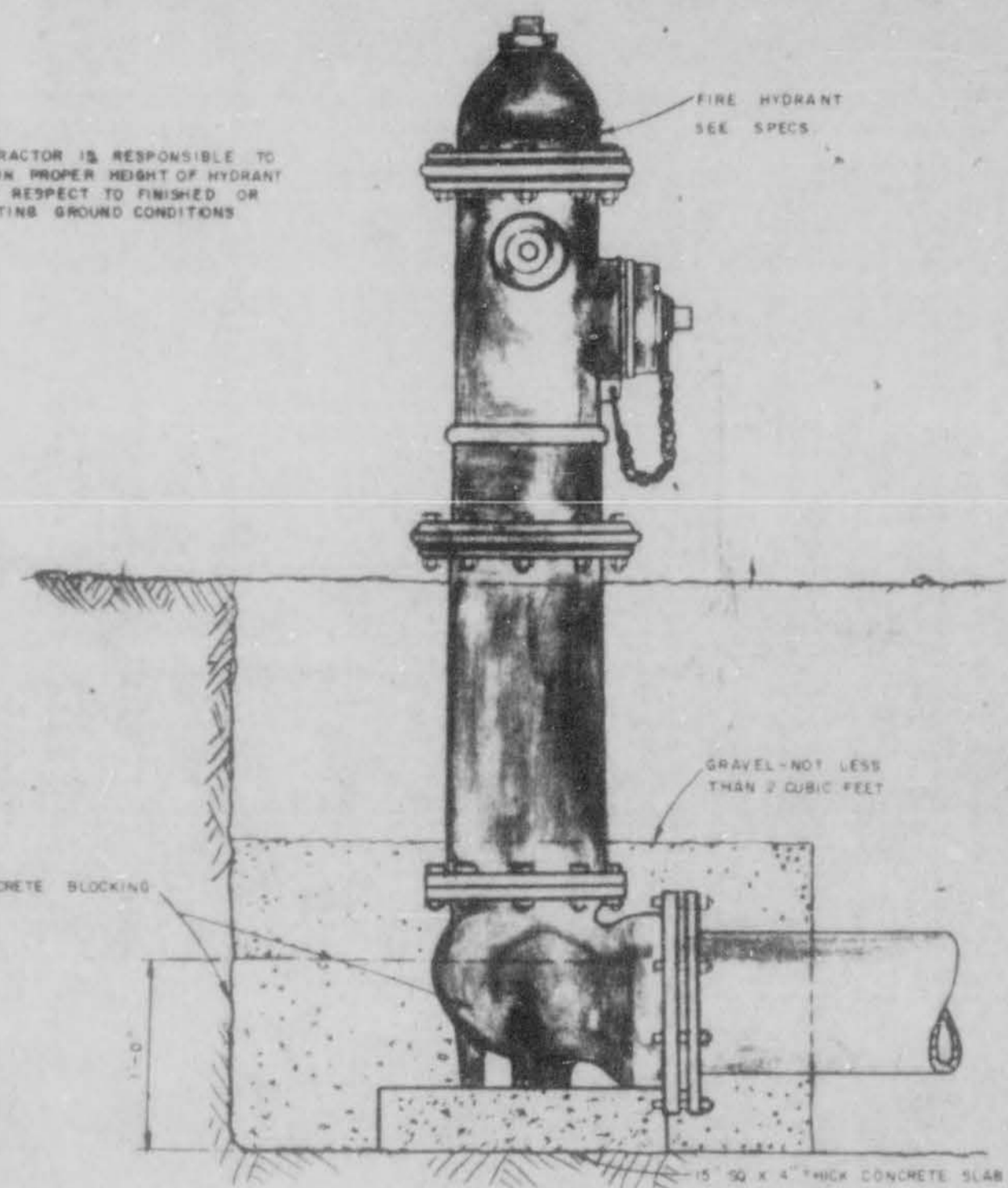
WATER DISTRIBUTION EXTENSIONS
 RIGBEL AND, MISSISSIPPI
 BARTH & ASSOCIATES, INC.
 CONSULTING ENGINEERS
 JACKSON, MISSISSIPPI
 3

J 99

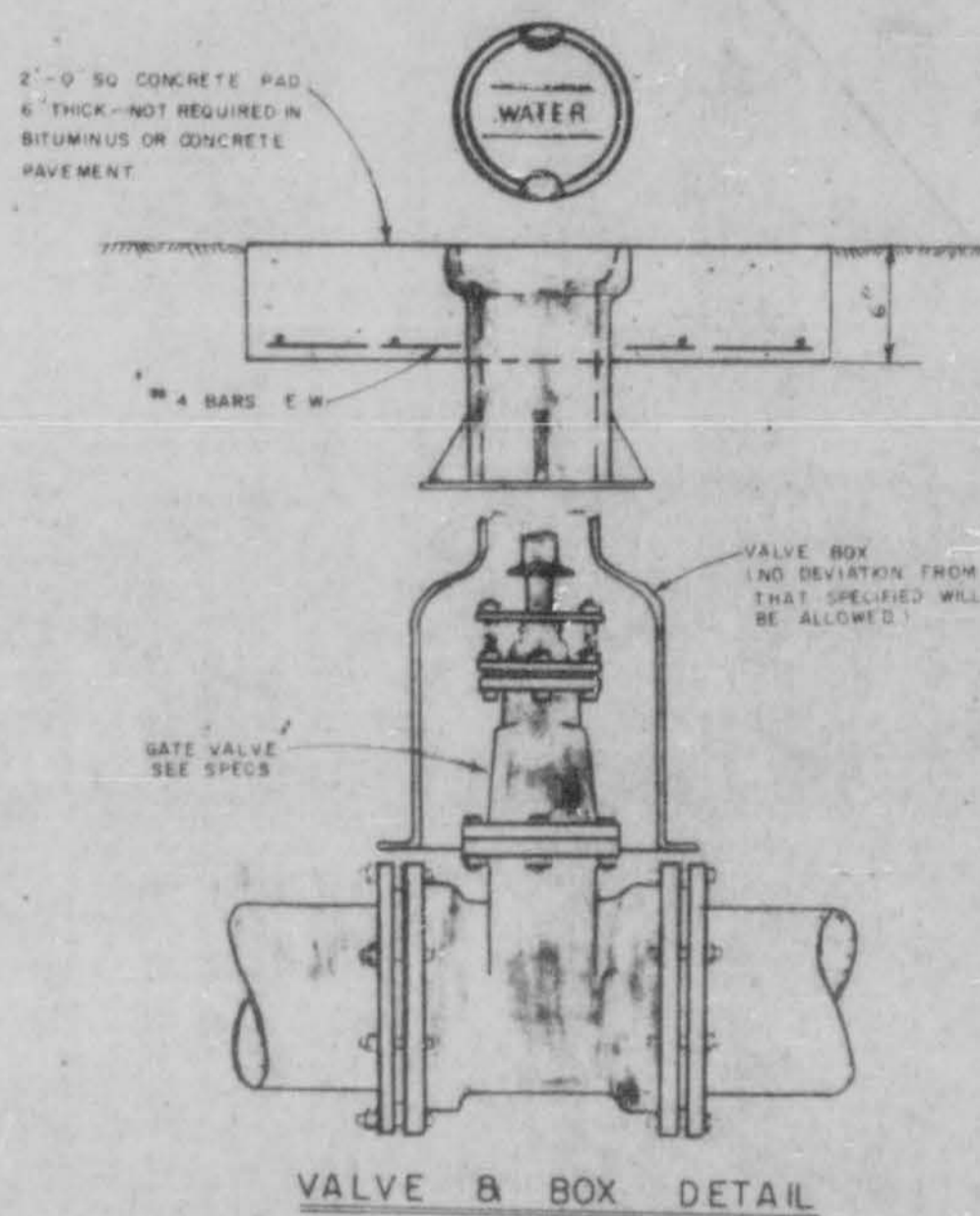
PLATE 2 DOUBLE PLAN AND PROFILE - FULL LINE
 PRINTED IN U.S.A.



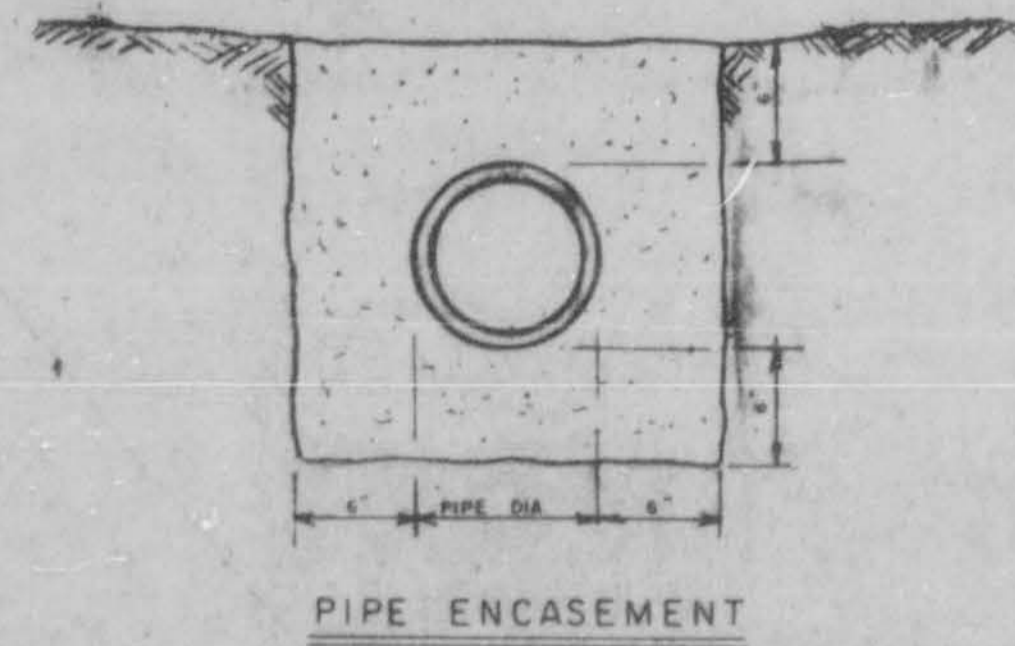
NOTE
CONTRACTOR IS RESPONSIBLE TO
OBTAIN PROPER HEIGHT OF HYDRANT
WITH RESPECT TO FINISHED OR
EXISTING GROUND CONDITIONS



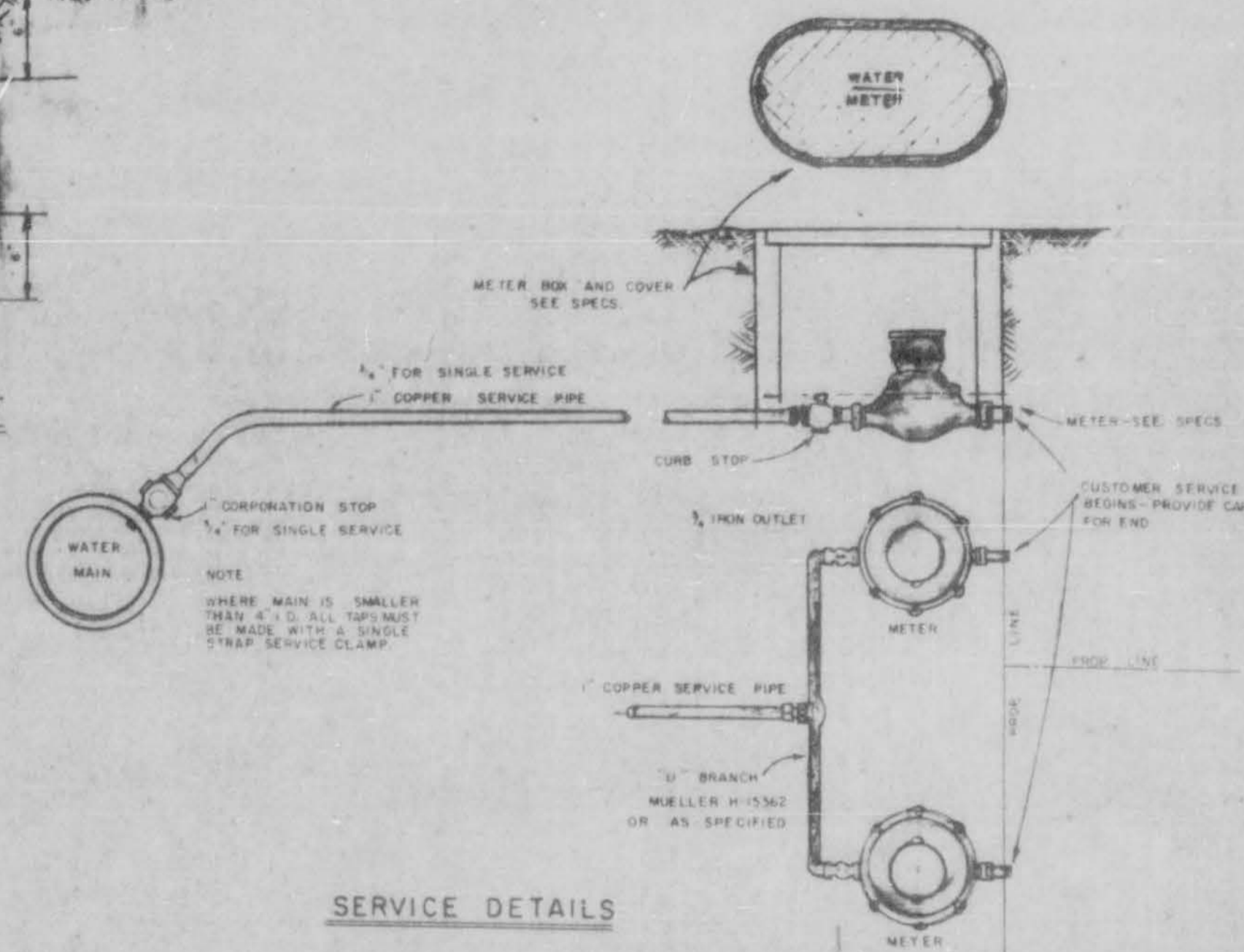
FIRE HYDRANT DETAIL



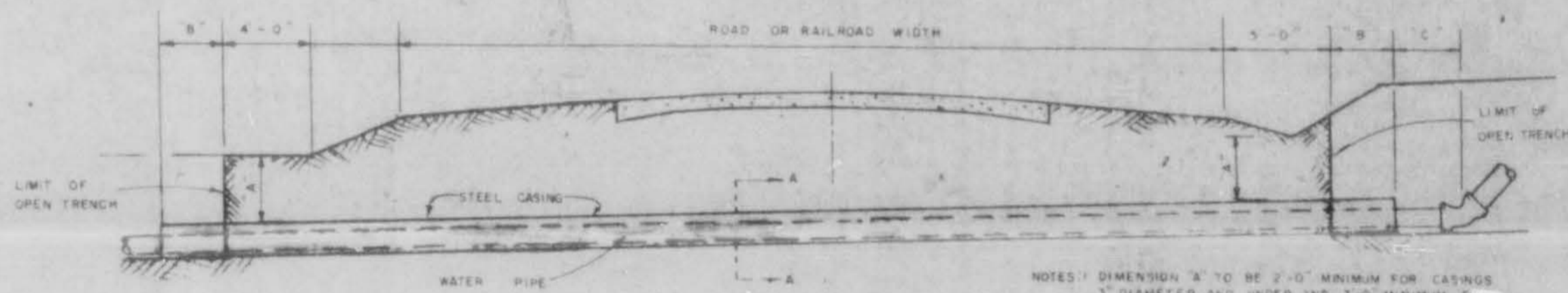
VALVE & BOX DETAIL



PIPE ENCASEMENT

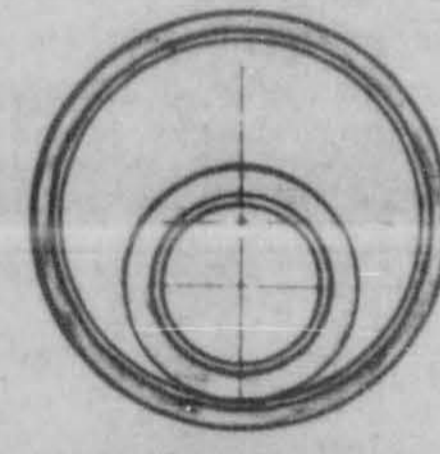


SERVICE DETAILS



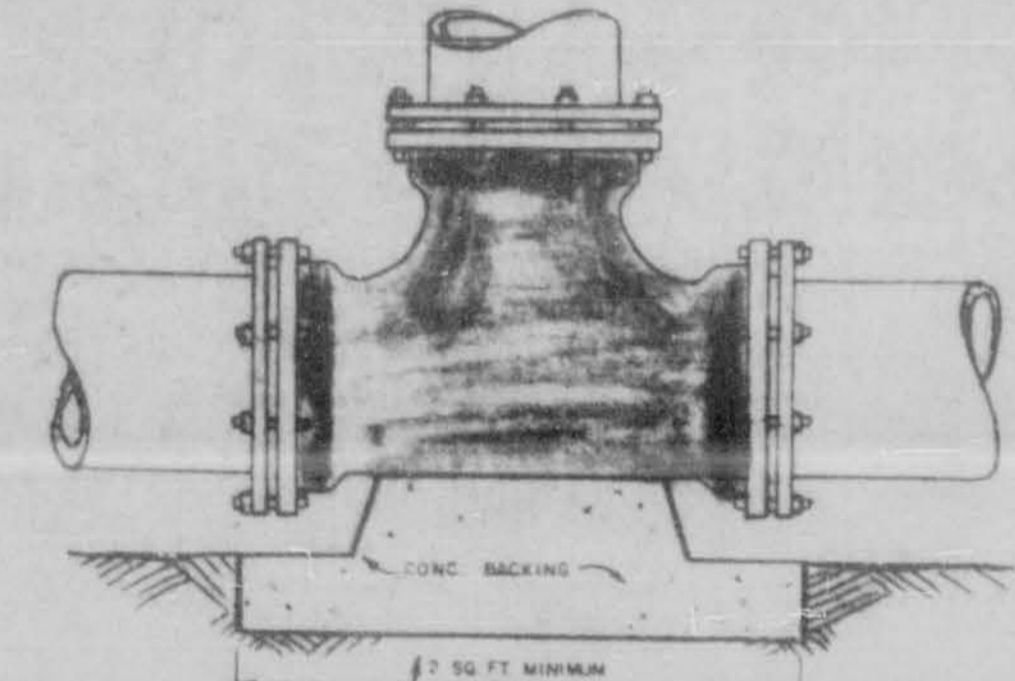
CROSSING DETAIL

- NOTES:
1. DIMENSION 'A' TO BE 2'-0" MINIMUM FOR CASINGS 3" DIAMETER AND UNDER AND 3'-0" MINIMUM FOR CASINGS OVER 3" DIMENSIONS 'B' AND 'C' TO BE 2'-0" MINIMUM FOR LINES 3" DIAMETER AND UNDER AND 4'-0" MINIMUM FOR LINES OVER 3"
 2. ENCASEMENTS TO BE INSTALLED UNDER THE ROAD BY MEANS OF JACKING THROUGH OR BY JUMP BORING. A HOLE THAT WILL REVEAL THE CASING WITH ONLY 1" CORRUGATED METAL OR STEEL CASING (EXCEPTIONAL FOR RAILROAD CROSSINGS HIGHWAY CROSSINGS - STEEL PIPE ONLY)
 3. DIMENSION 'B' WILL BE PAID FOR AS CIP IN CASING
 4. BORE OR JACKED CASING TO BE PAID FOR TO LIMIT OF OPEN TRENCH ONLY
 5. WHERE THERE IS CONFLICT WITH THE PLANS AND HIGHWAY AND RAILROAD CROSSING PERMITS THE APPROVED PERMITS WILL GOVERN



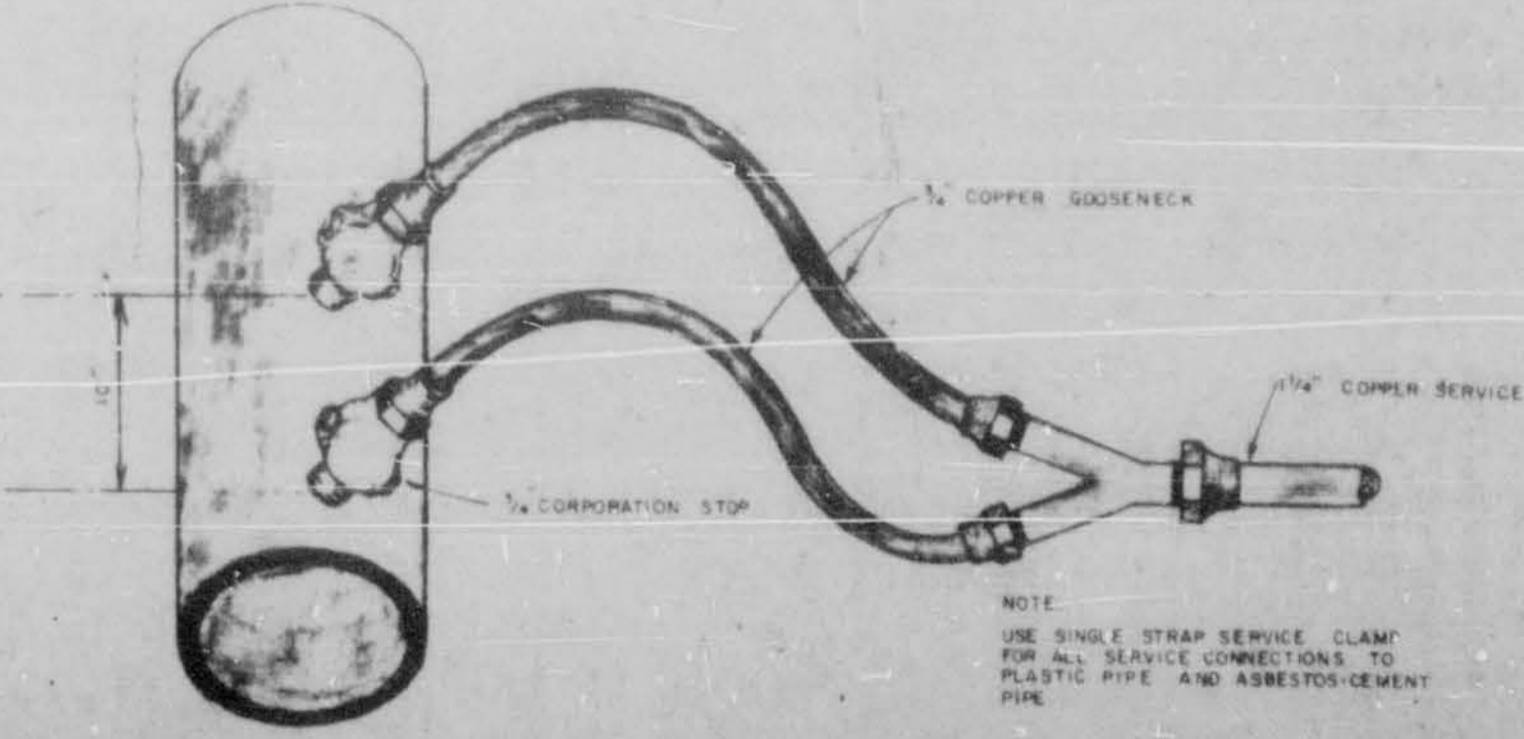
SECTION A-A

4" API SCHEDULE 40 STEEL PIPE ENCASEMENT FOR 10" PIPE

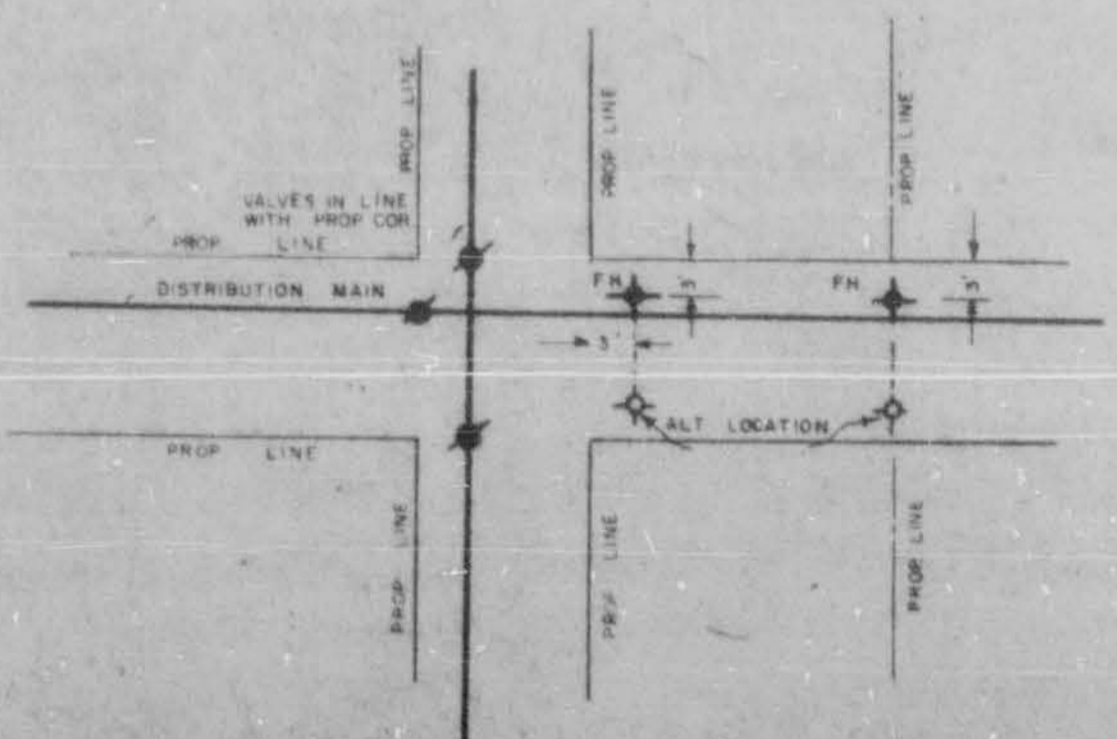


BEND & TEE DETAILS

- GENERAL NOTES
1. NO ADDITIONAL COMPENSATION WILL BE ALLOWED FOR USE OF ADDITIONAL FITTINGS WHERE UNDERGROUND OBSTACLES ARE ENCOUNTERED WITHOUT WRITTEN APPROVAL OF THE ENGINEER.
 2. ALL WATER LINES WITHIN ROW LIMITS OF HIGHWAYS AND RAILROADS ARE TO BE INSTALLED IN STRICT ACCORDANCE WITH THE APPROVED PERMITS.
 3. CONTRACTOR WILL COORDINATE THE LOCATION OF EXISTING UTILITIES WITH THE LOCAL AUTHORITIES.



SERVICE CONNECTIONS



TYPICAL DETAIL OF VALVE AND HYDRANT LOCATIONS

STANDARD DETAIL SHEET			
WATER			
SCALE: NO SCALE	DESIGNED BY: T S B	DRAWN BY:	
DATE:	APPROVED BY: T S B	JOB NO.:	
RIDGELAND, MISS.			
BARTH & ASSOCIATES, INC.			DRAWING NO.
CONSULTING ENGINEERS			SD-1
JACKSON, MISSISSIPPI			