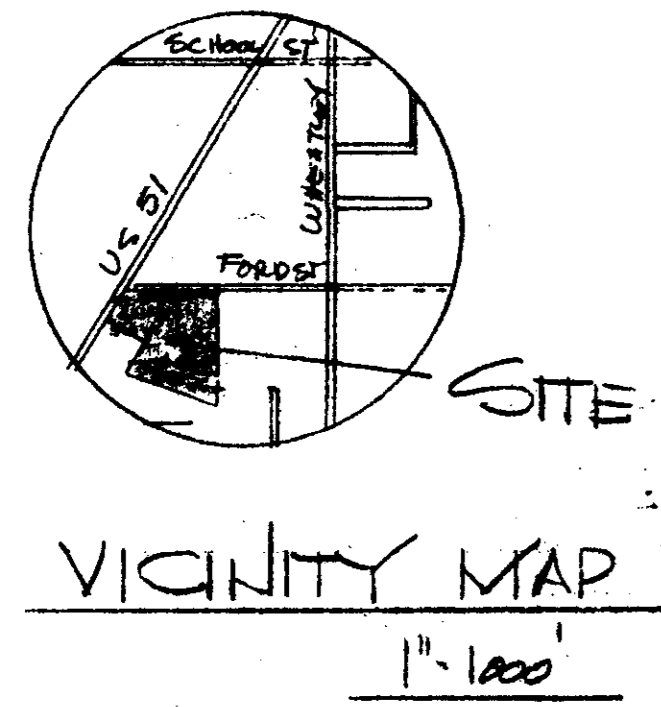
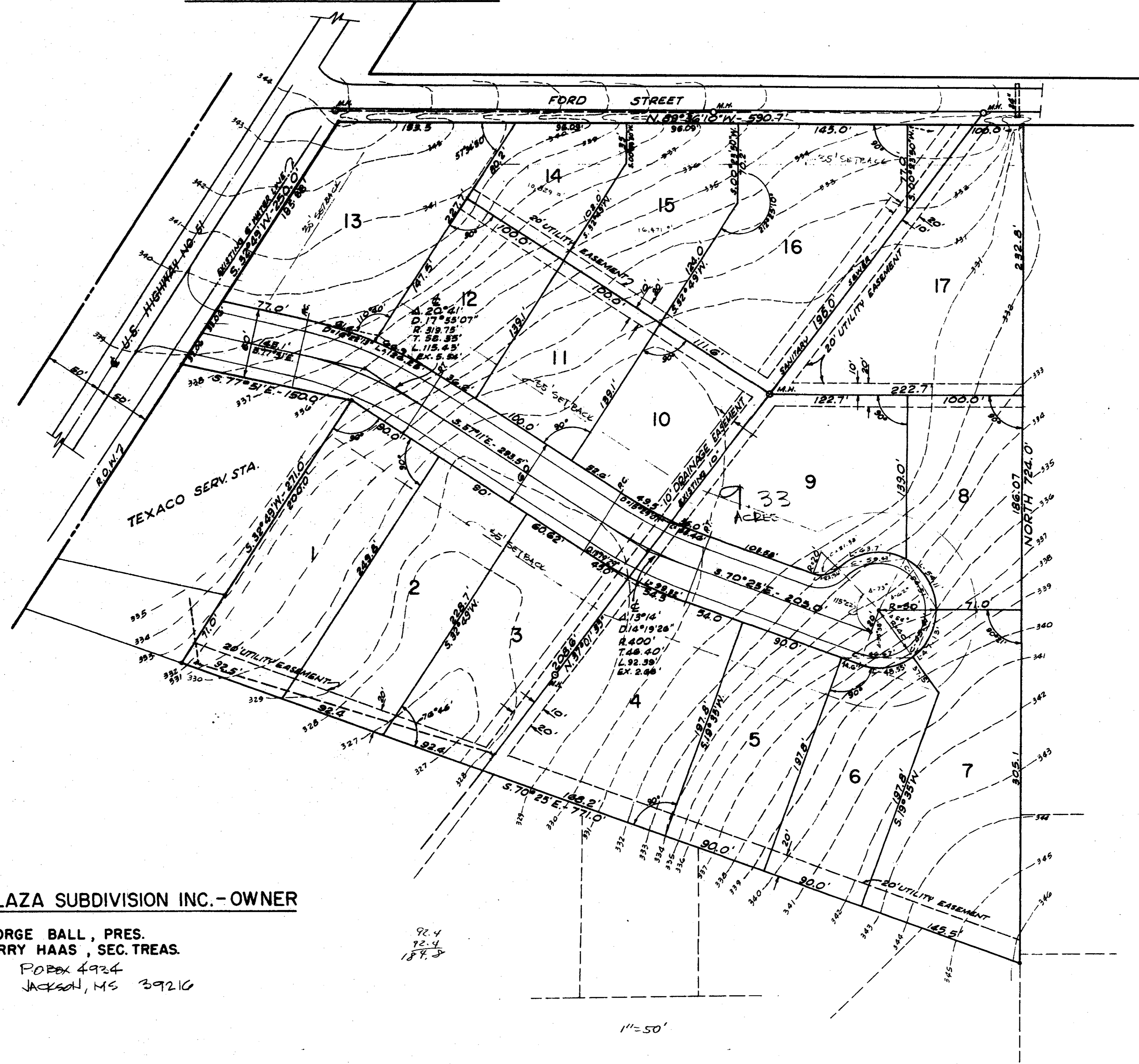


RIDGELAND PLAZA SUBDIVISION



RIDGELAND PLAZA SUBDIVISION INC. - OWNER

GEORGE BALL, PRES.
 HARRY HAAS, SEC. TREAS.
 P.O. BOX 4934
 JACKSON, MS 39216



Approved 4-12-78
J.W. Stover

AS BUILT
 2.29.78

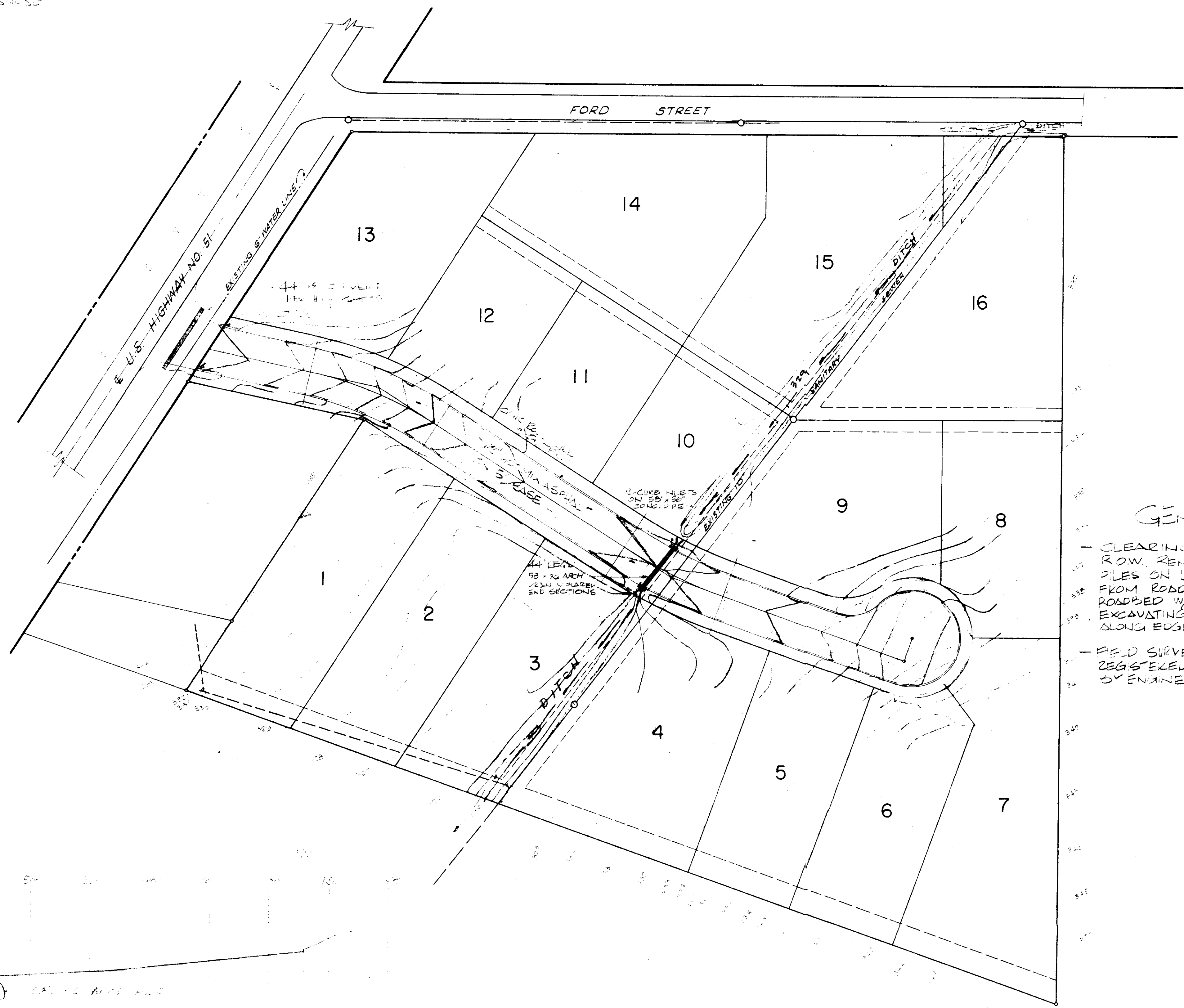
PWP-01809

TYR. SECT. 8 STREET

WIDE ROW CRU SET

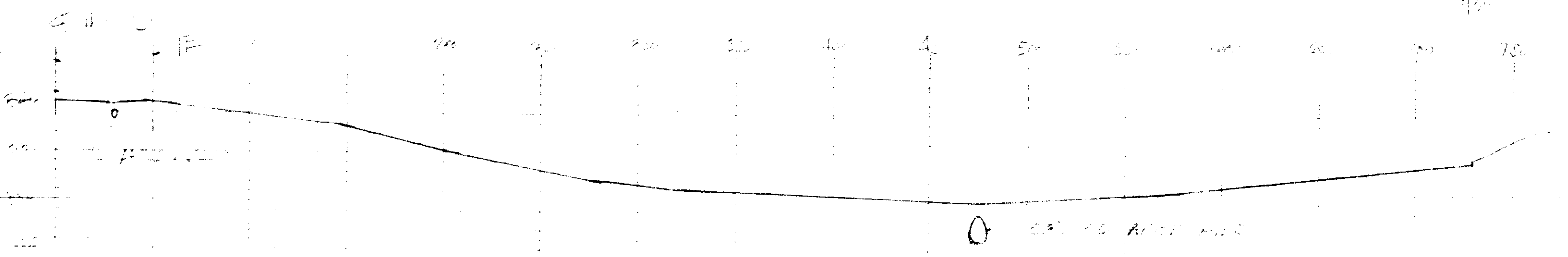
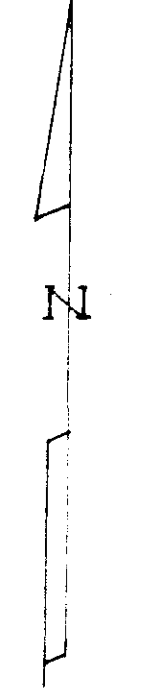
ADJUSTED GRADE # W/ SITE FROM STREET

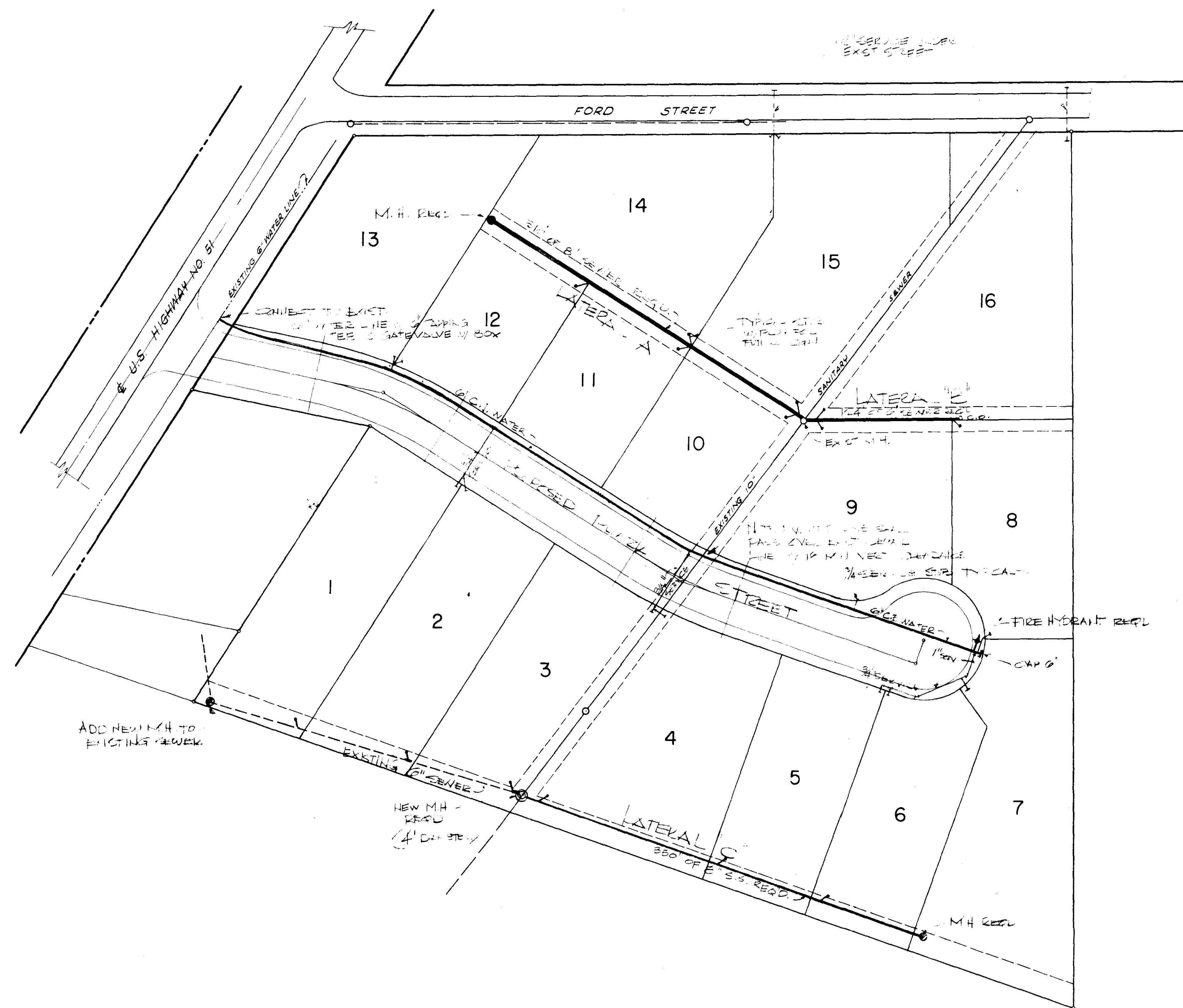
TRUCK LITCH



GENERAL NOTES:

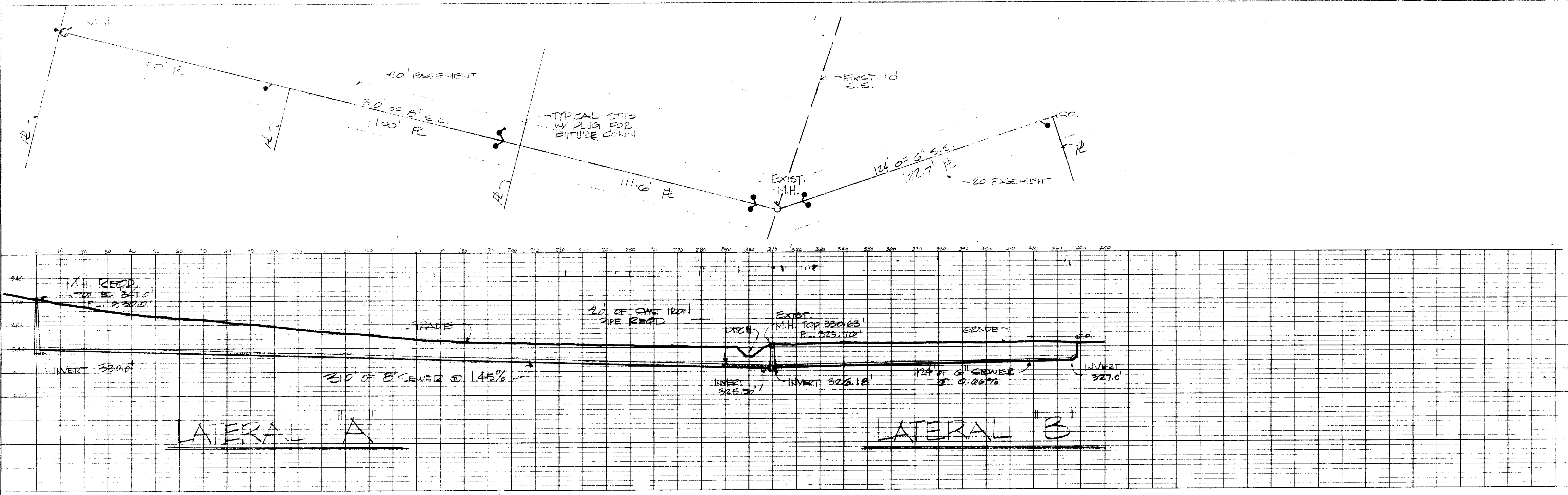
- CLEARING & GRUBBING OF STREET ROW. REMOVAL OF EXISTING TRASH PILES ON LOTS, REMOVAL OF TOPSOIL FROM ROADBED, EXCAVATING & FILLING ROADBED W/ ON SITE MATERIAL & EXCAVATING DRAINAGE DITCH (WASTE ALONG EDGES OF DRAINAGE DITCH)
- FIELD SURVEY WILL BE STAKED BY REGISTERED PERSONNEL EMPLOYED BY ENGINEER



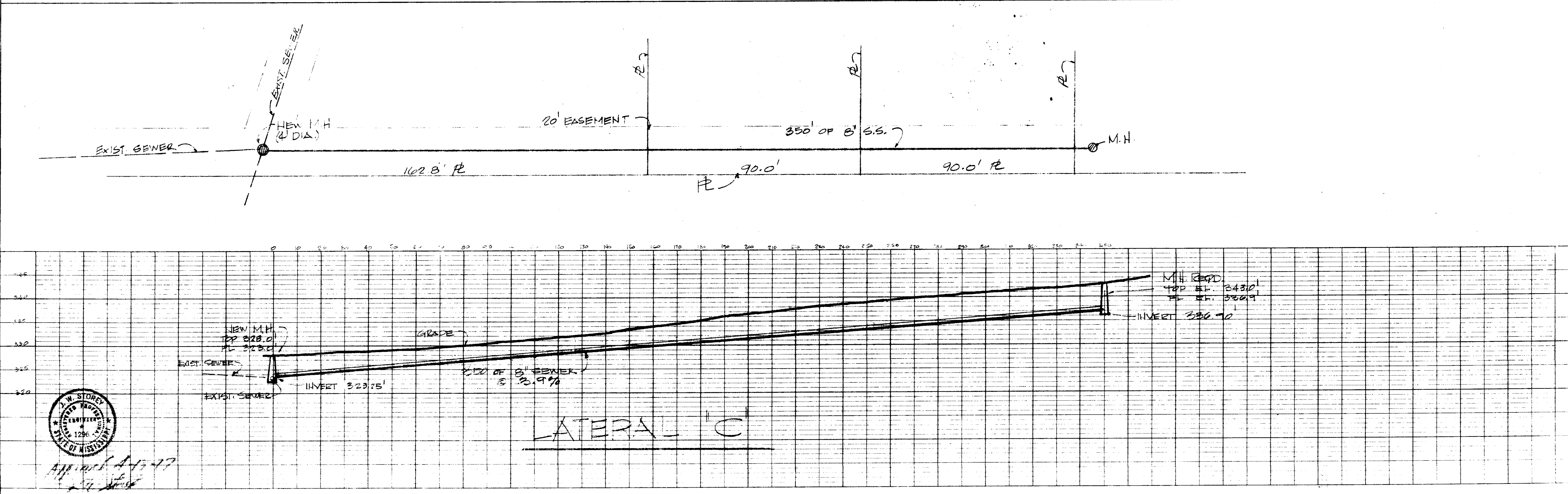


WATER & SEWER WORK
 [Illegible text]

DATE	
BY	
PLAN	
NO.	
DATE	
BY	
PROFILE	
NO.	



DATE	
BY	
PROFILE	
NO.	



APPROVED 4-17-77
 J.W. STOREY

R. G. HENDLAND DRAWN