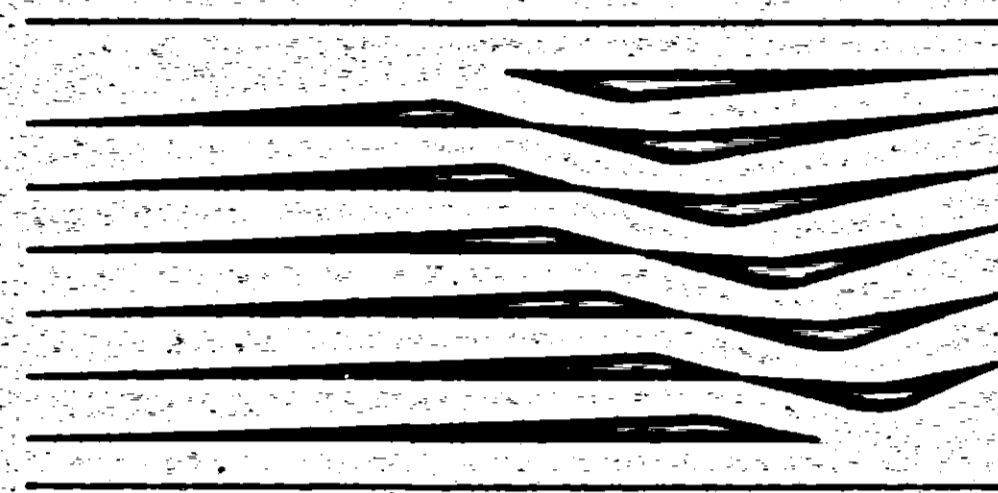
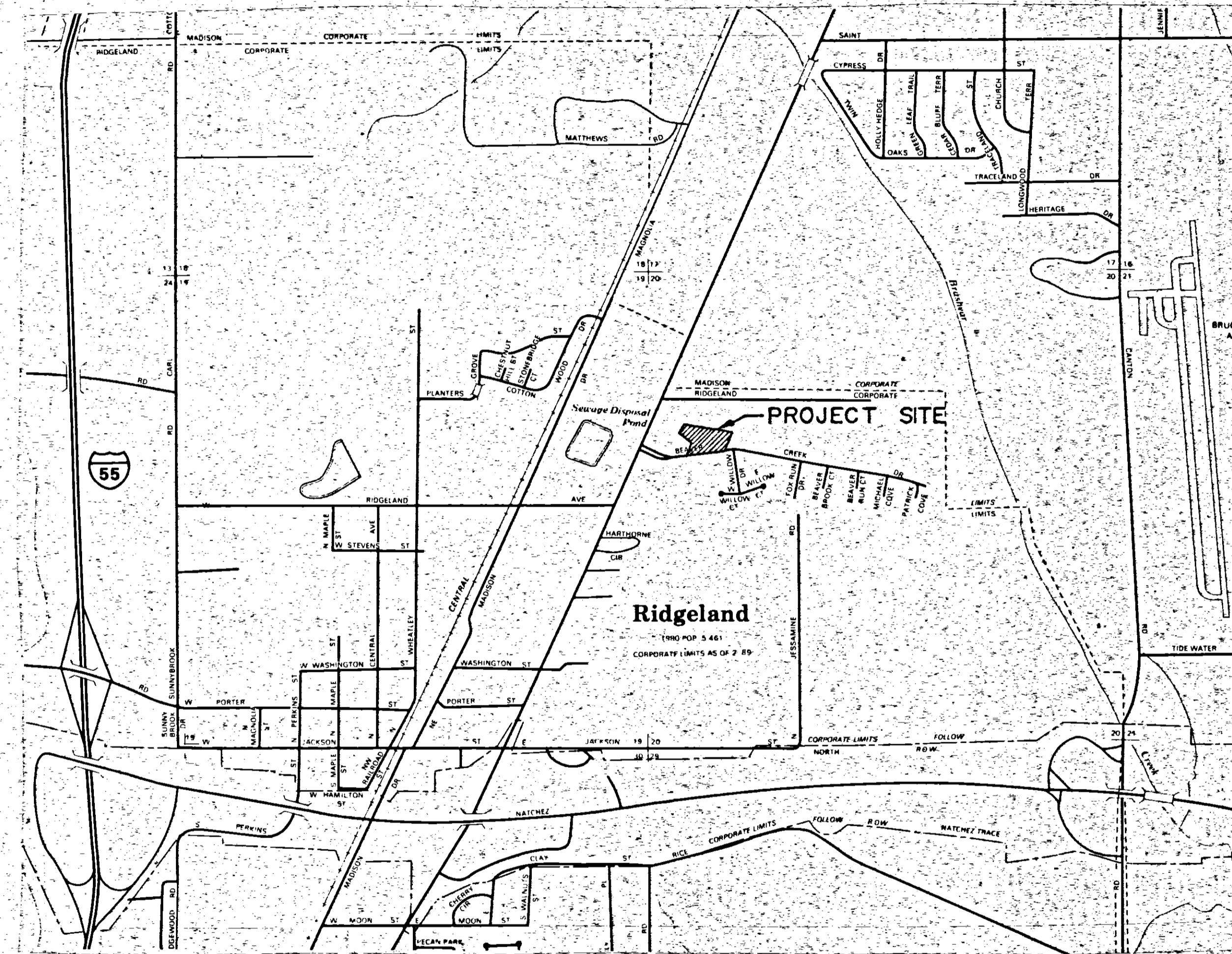


# TENNIS COURTS CITY OF RIDGELAND TENNIS CENTER

THE CITY OF



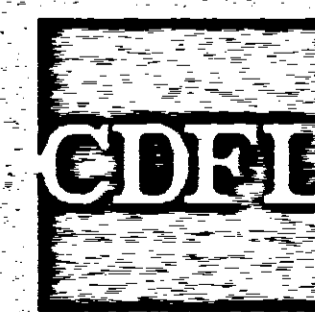
RIDGELAND



VICINITY MAP

JANUARY 1997

COOKE DOUGLASS FARR LEMONS/LTD  
ARCHITECTS & ENGINEERS



3780 INTERSTATE 55 NORTH/JACKSON, MS 39211/(601)366-3110

*Aldermen:*

*Al Bible  
Harvey Carr, Jr.  
Linda Davis  
Kathi Irons  
Daryl Smith*

*Mayor:*

*Gene F. McGee*

*Mayor Pro Tem:*

*Chuck Kobert*

*City Attorney:*

*Jerry Mills*

*City Clerk:*

*Michael McPhearson*

*Fire Chief:*

*Elmer Waits*

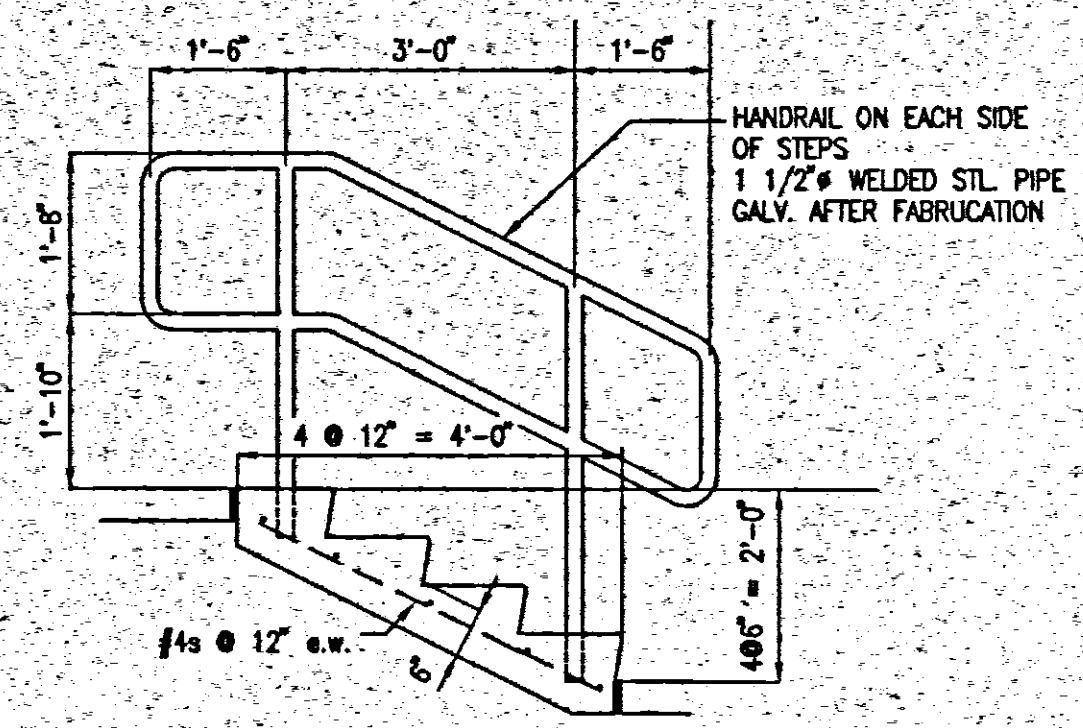
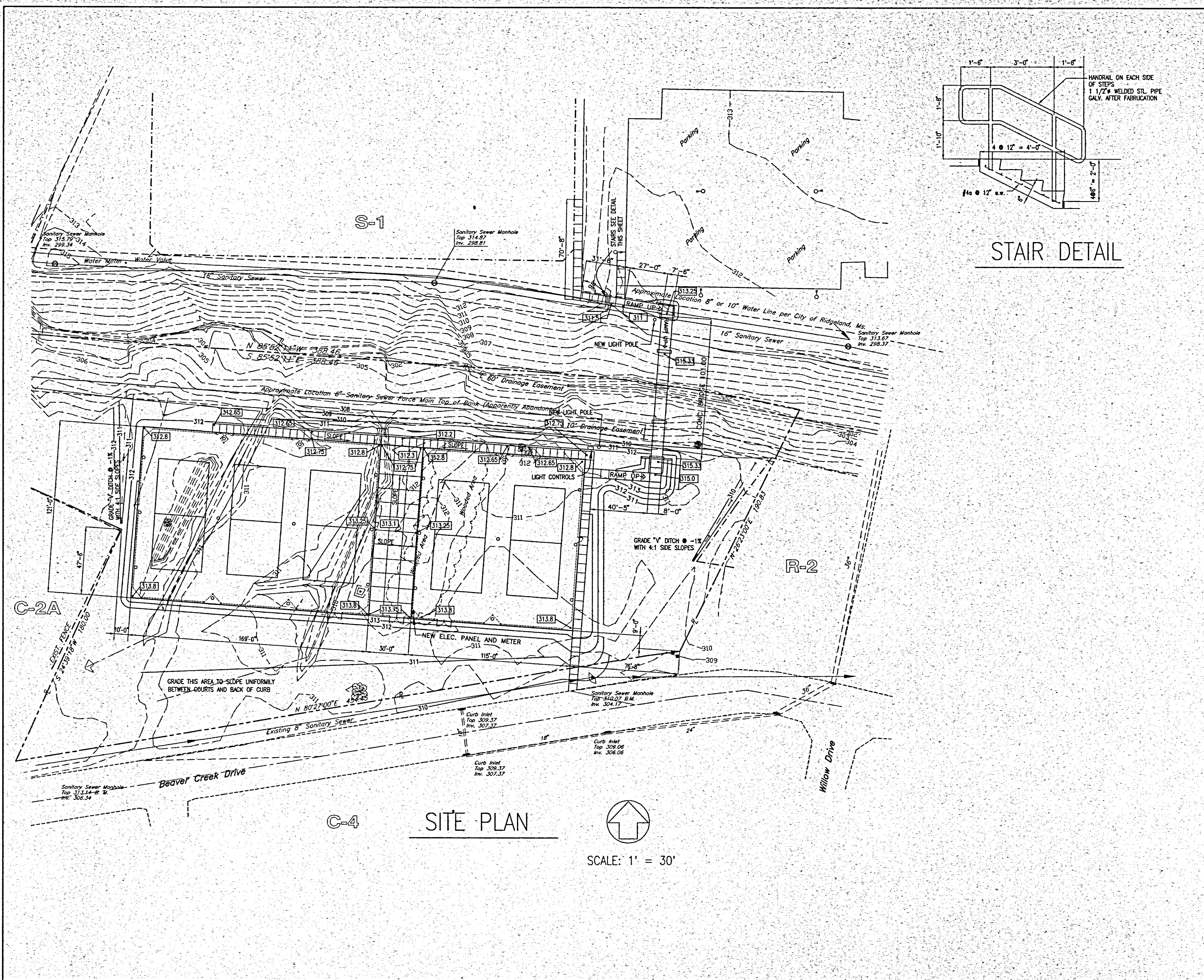
*Police Chief:*

*Charles Newell*

PLANS REVIEWED  
CITY OF RIDGELAND  
PERMIT #2472 12-1-92

92-00058





STAIR DETAIL

NO.	REVISIONS	DATE

- GENERAL NOTES:
1. CLEAR AND GRUB ENTIRE SITE.
  2. REMOVE SPOIL PILES AND TRASH PILES. REMOVE FENCES.
  3. STRIP ENTIRE SITE. STOCKPILE SUITABLE TOPSOIL FOR LATER USE. DISPOSE OF ALL UNSUITABLE MATERIAL.
  4. PROOF ROLL AREA UNDER NEW FILL USING LOADED DUMP TRUCK. REMOVE ANY SOFT OR UNSTABLE SOILS AND REPLACE WITH NEW SELECT FILL MATERIAL.
  5. ALL DISTURBED AREAS OF SITE SHALL BE TOPSOILED AND TURFED. SEE SPECIFICATION.

**COOKE DOUGLASS FARR LEMONS/LTD**  
ARCHITECTS & ENGINEERS

3780 INTERSTATE 66 NORTH/JACKSON, MS 39211/(601)366-3110

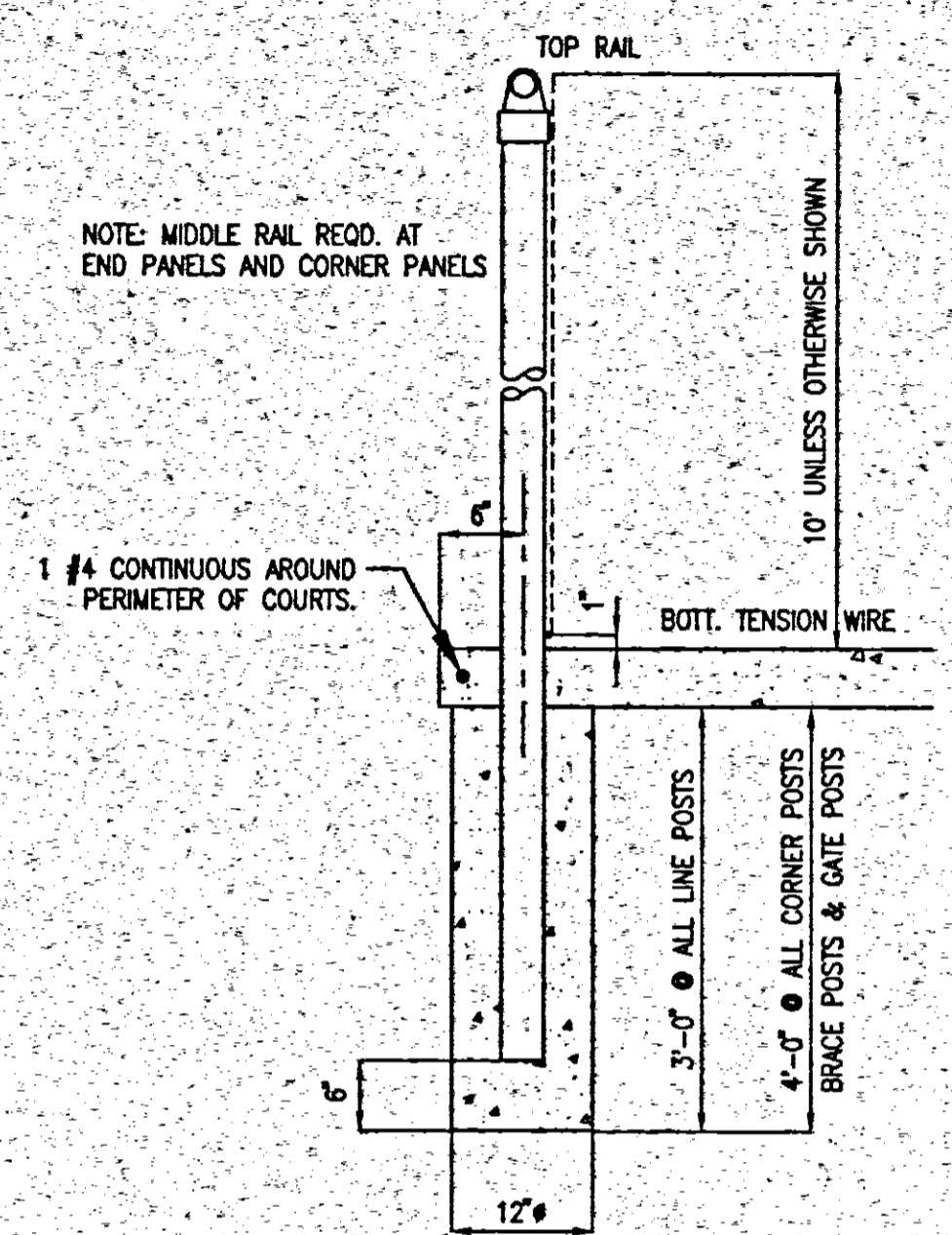
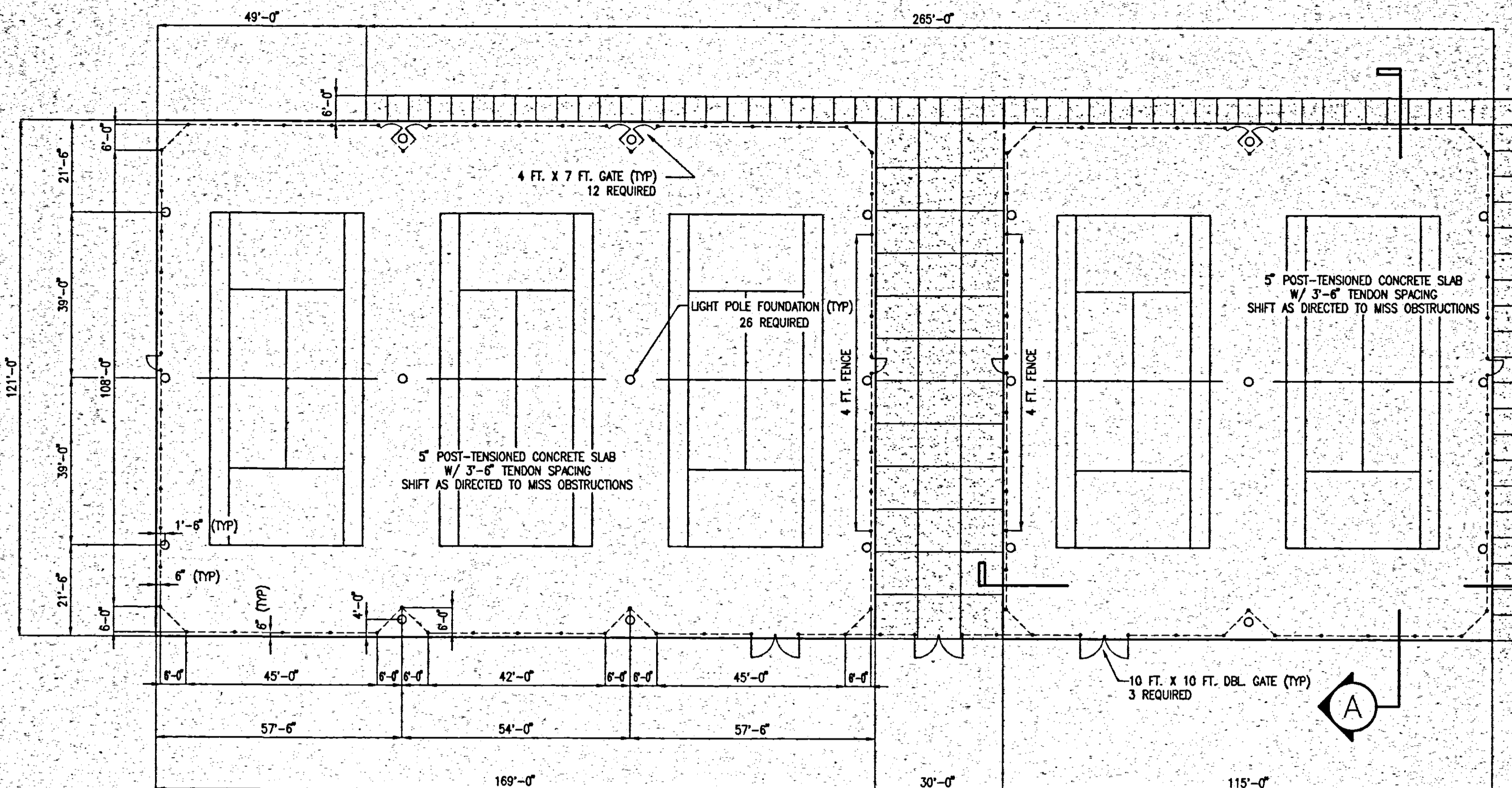
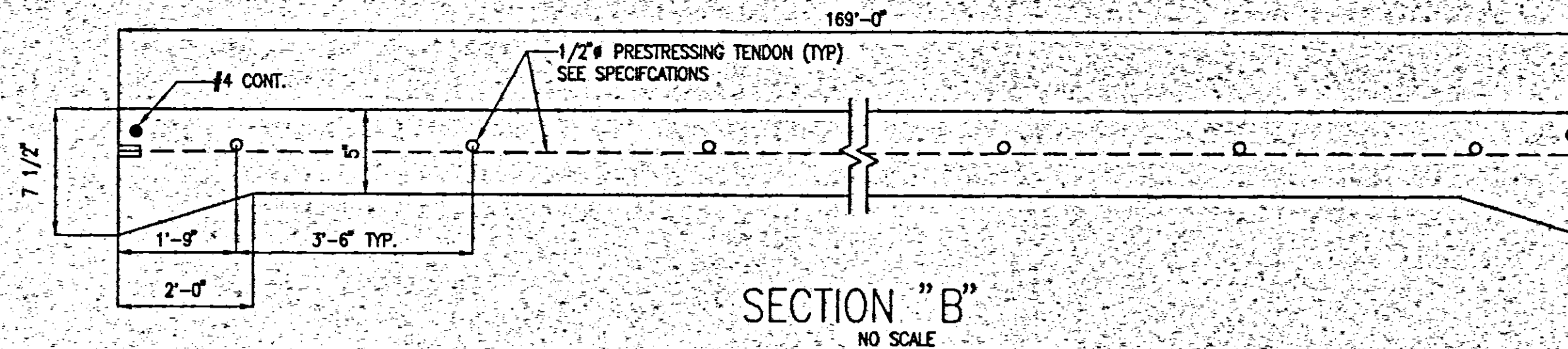
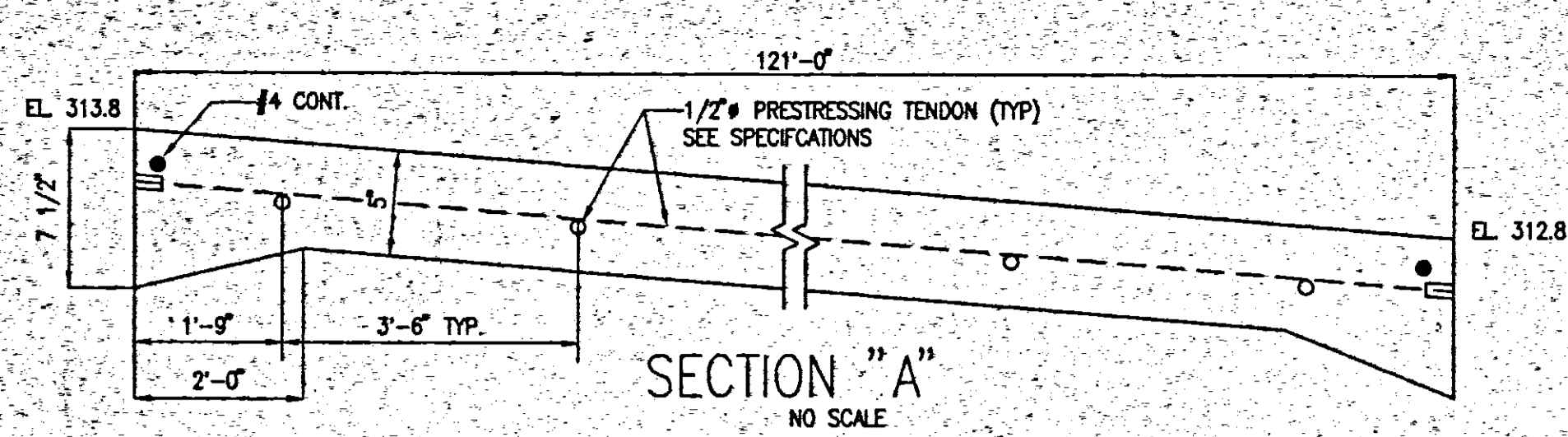
PROJECT  
**City of Ridgeland  
Tennis Center**

Ridgeland, MS

SHEET TITLE  
**SITE PLAN  
GRADING AND DRAINAGE**

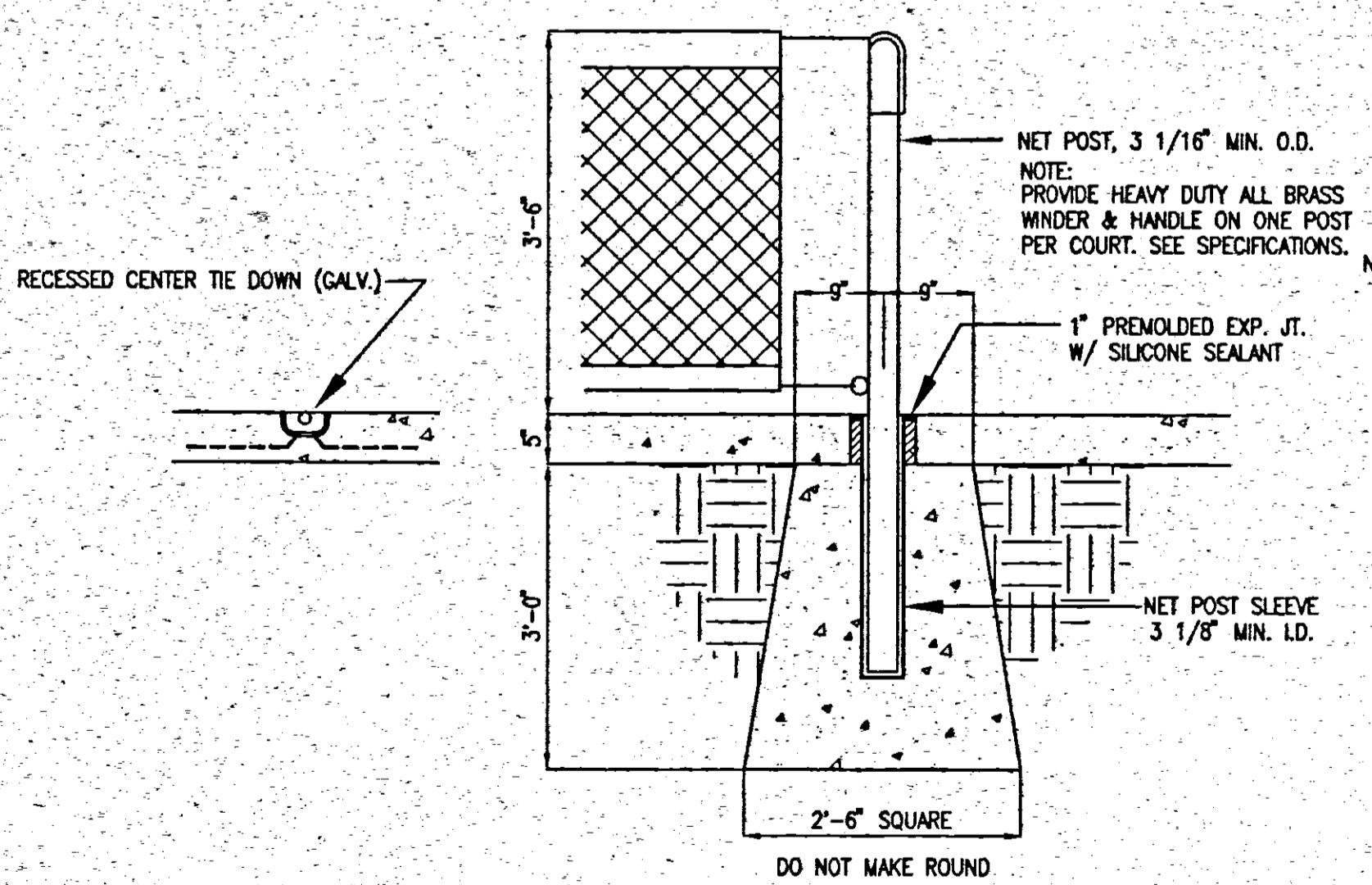
	PROJECT NO. <b>95-022</b>	REVISION NUMBER
	DATE <b>01/97</b>	<b>C-1</b>
	DRAWN <b>WILLIAMS</b>	
	CHECKED <b>COOKE</b>	



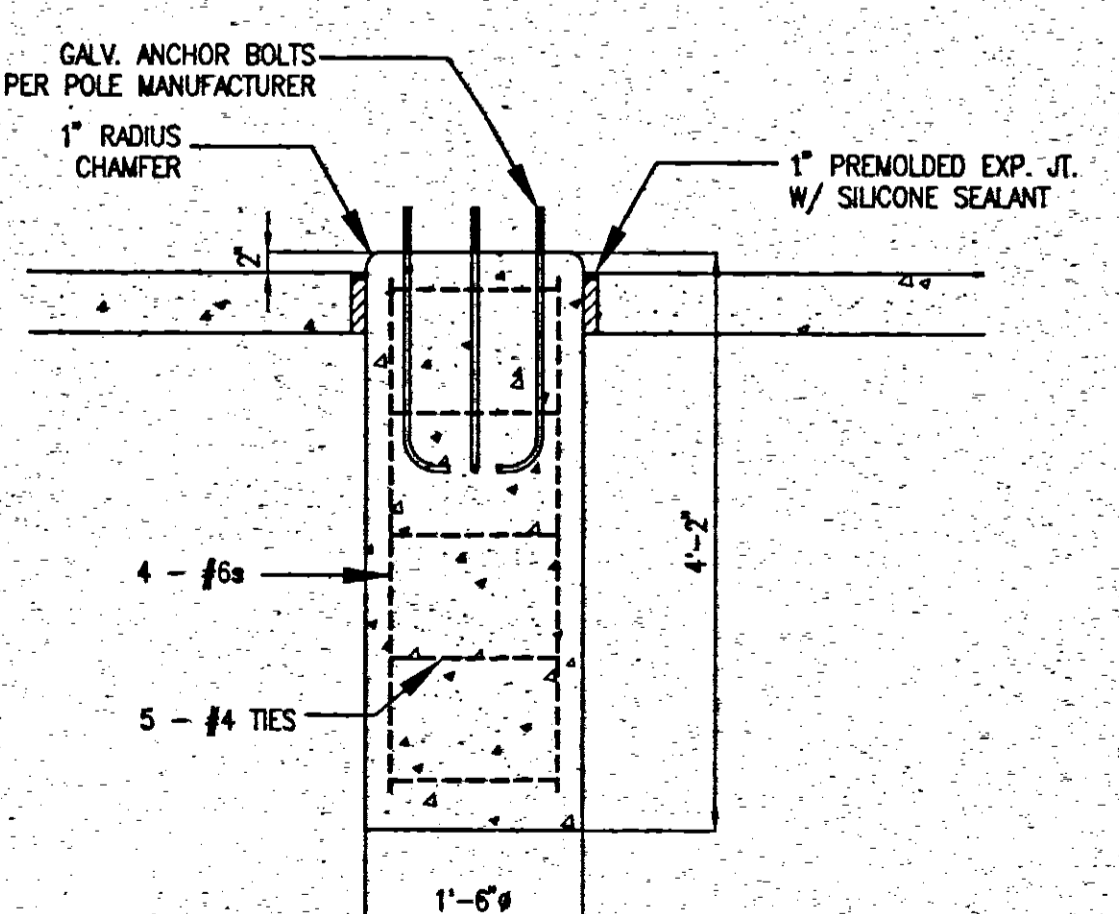


PLAN  
1" = 20"

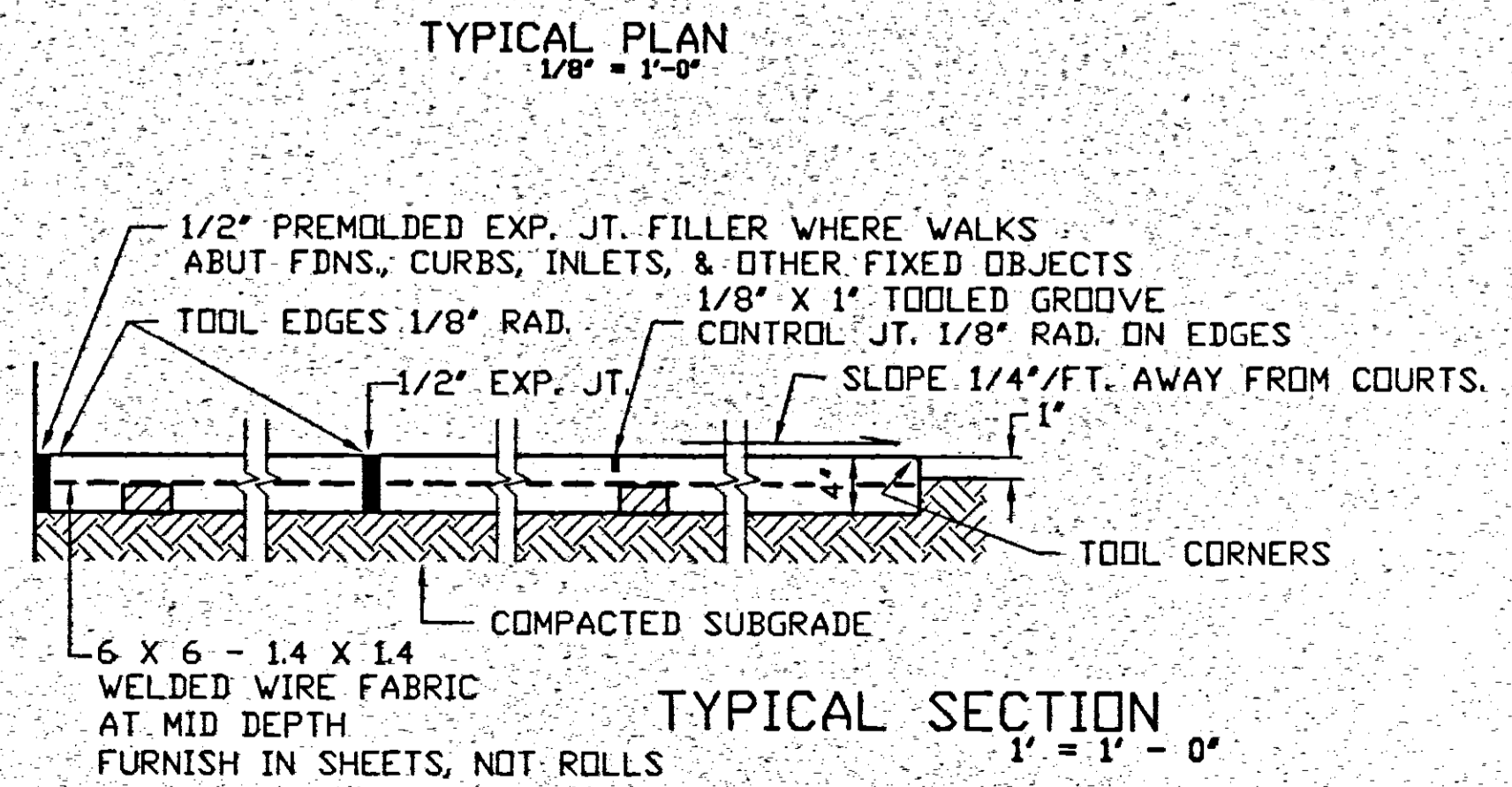
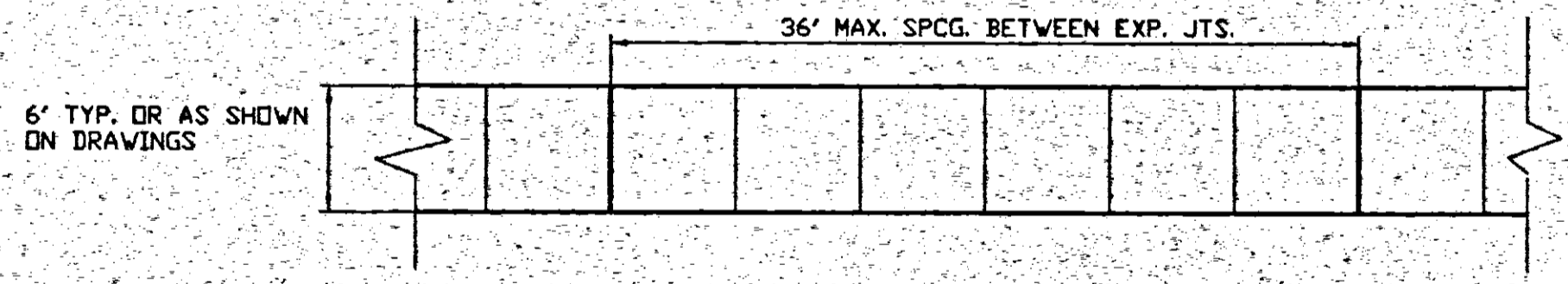
FENCE DETAIL  
NOT TO SCALE



NET POST DETAIL  
NOT TO SCALE



LIGHT POLE FOUNDATION  
NOT TO SCALE



TYP. CONCRETE SIDEWALK  
SCALE: AS NOTED

NO.	REVISIONS	DATE

NOTE: PLACE DOUBLE LAYER VAPOR BARRIER UNDER POST TENSIONED SLABS. SEE SPECIFICATIONS.  
POST-TENSIONING NOTE: POST TENSIONING SHALL BE DONE IN TWO STAGES. FIRST STAGE SHALL BE APPLIED 24 HOURS AFTER INITIAL SET AND SHALL BE 30 PERCENT OF THE FINAL FORCE. SECOND STAGE SHALL BE APPLIED WHEN CONCRETE HAS REACHED 3000 PSI STRENGTH AND SHALL BE TO THE FULL FINAL FORCE.

**COOKE DOUGLASS FARR LEMONS/LTD**  
ARCHITECTS & ENGINEERS  
**CDFL**  
3700 INTERSTATE 55 NORTH/JACKSON, MS 39211/(601)368-3110

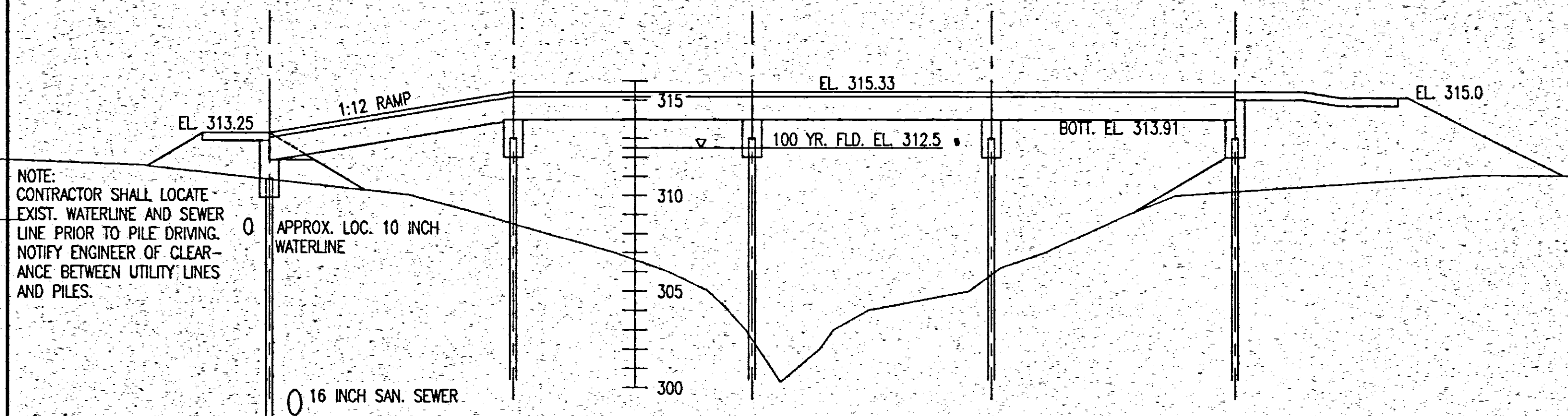
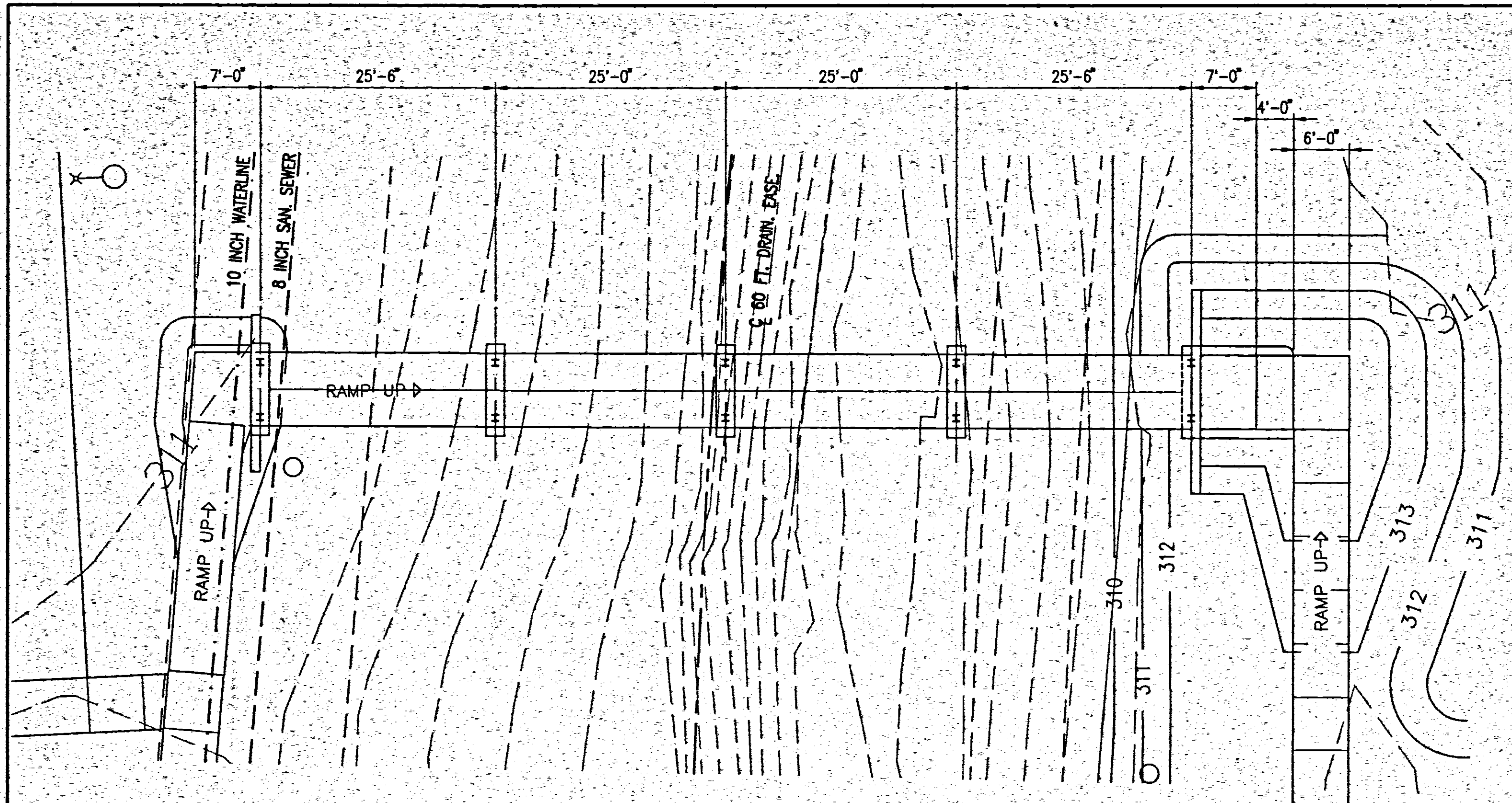
PROJECT  
**City of Ridgeland Tennis Center**  
Ridgeland, MS

SHEET TITLE  
**COURT LAYOUT PLAN AND DETAILS**

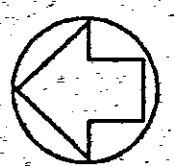
PROJECT NO. 95-022	SHEET NUMBER <b>C-2</b>
DATE 01/97	DRAWN WILLIAMS
CHECKED COOKE	OF





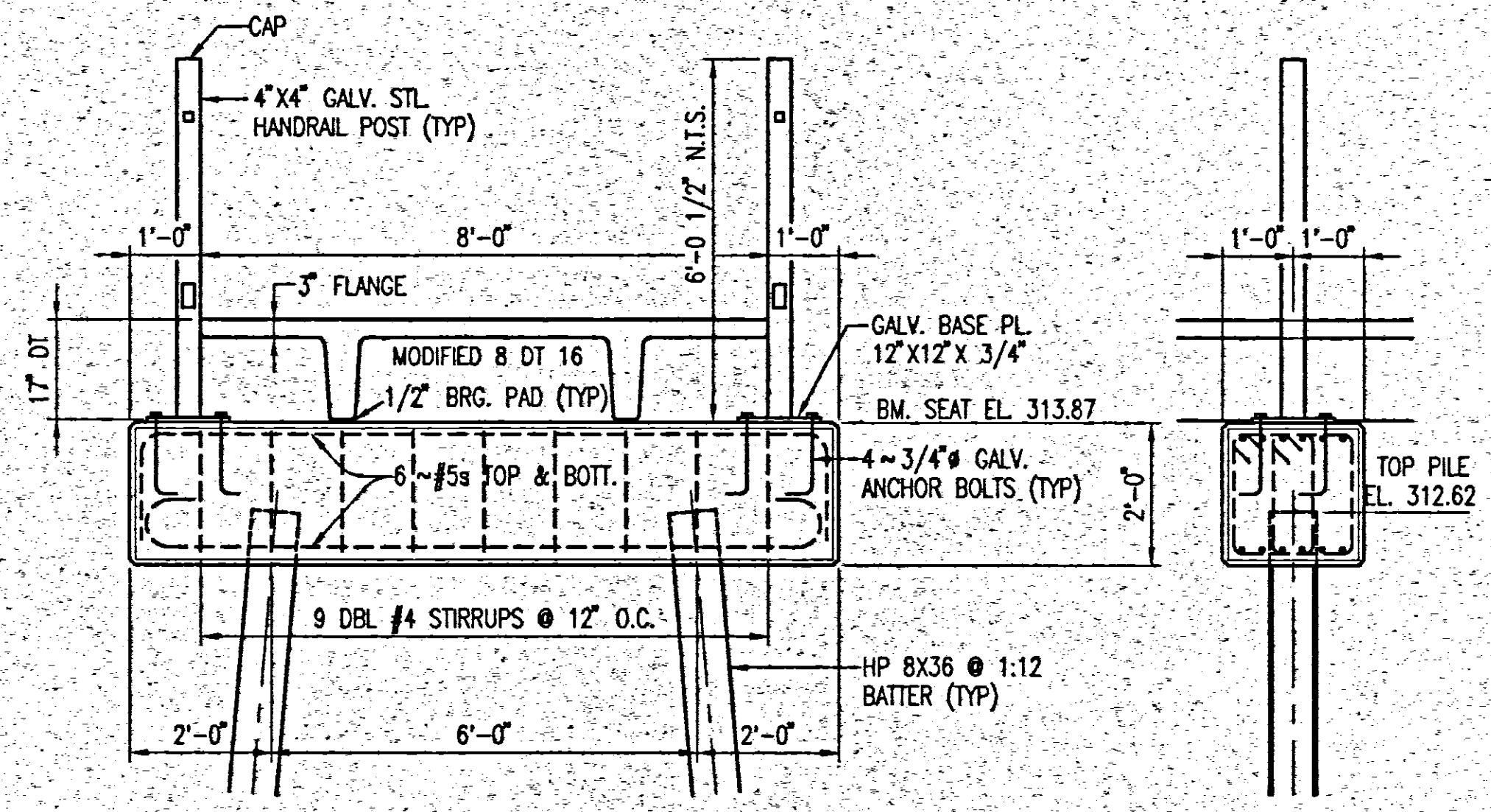


NOTE:  
CONTRACTOR SHALL LOCATE  
EXIST. WATERLINE AND SEWER  
LINE PRIOR TO PILE DRIVING.  
NOTIFY ENGINEER OF CLEAR-  
ANCE BETWEEN UTILITY LINES  
AND PILES.



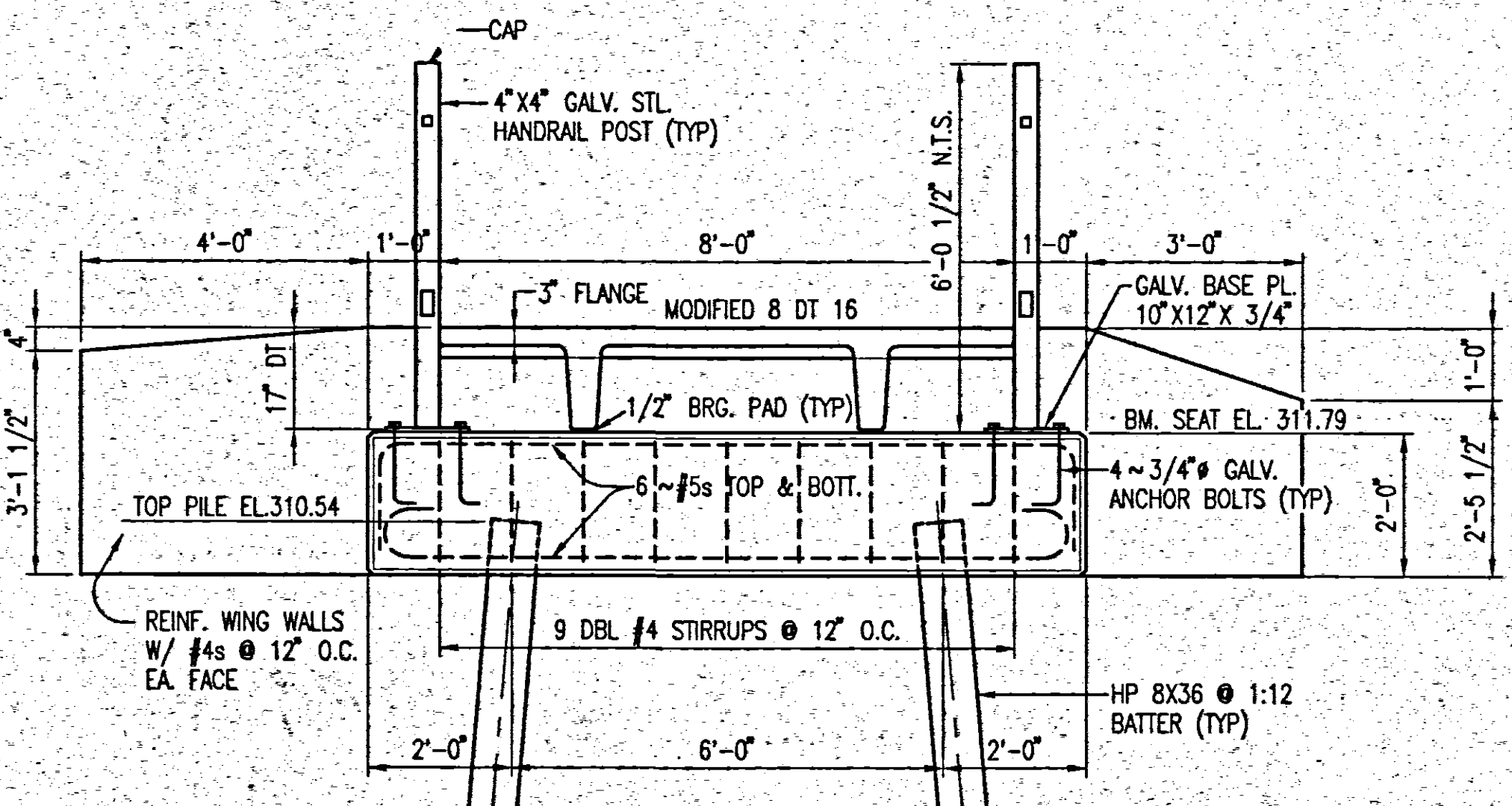
**BRIDGE PLAN AND ELEVATION**

(HANDRAIL NOT SHOWN) HORIZ. 1" = 10'-0"  
VERT. 1" = 5'-0"



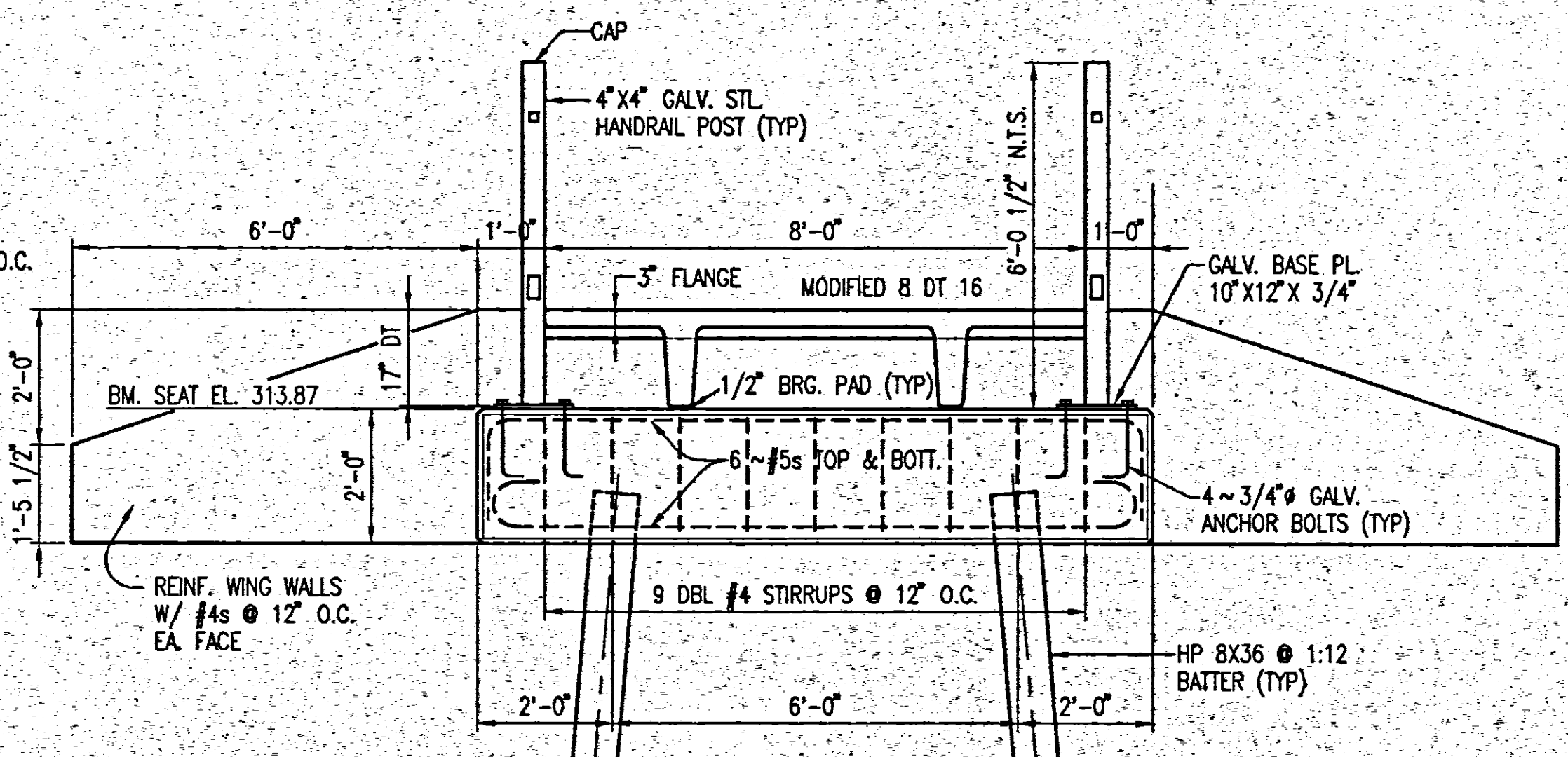
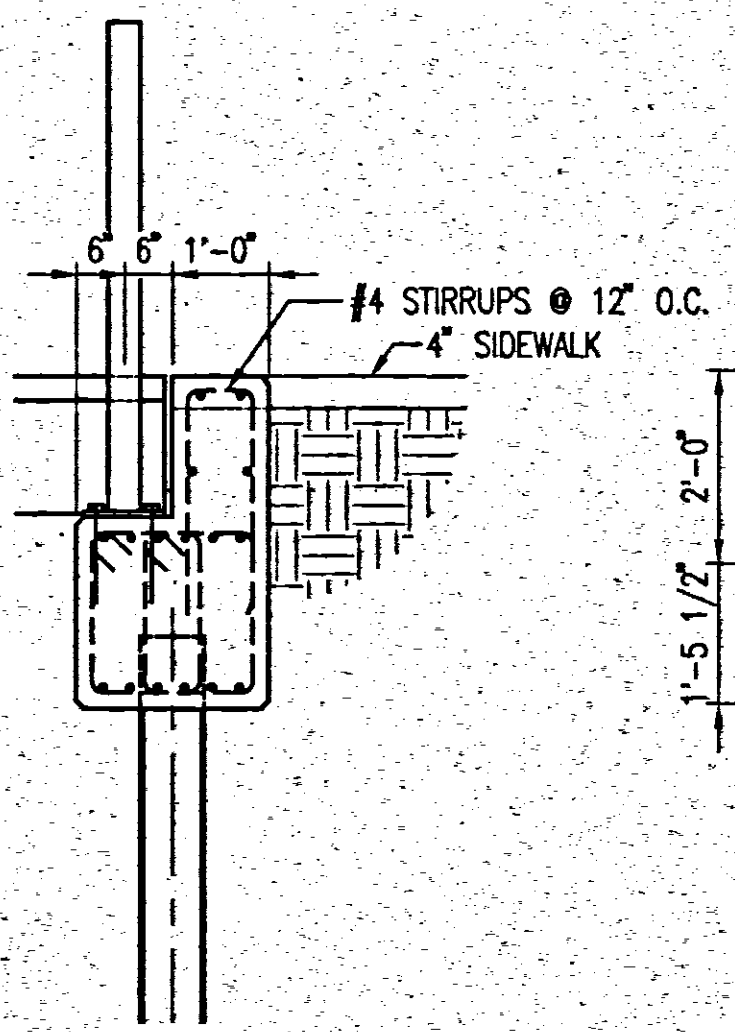
**TYPICAL INTERMEDIATE PIER**

1/2" = 1'-0"



**NORTH ABUTMENT**

1/2" = 1'-0"



**SOUTH ABUTMENT**

1/2" = 1'-0"

NO.	REVISION	DATE

**PILE NOTES:**  
PILES SHALL BE DRIVEN TO 20 TON BRG. CAPACITY.  
ESTIMATED PENETRATION IS 30 FT.

**DOUBLE TEE NOTE:**  
SEE DETAIL "B" SH. C-4 FOR EMBEDDED ANGLE TO BE INCLUDED AT MIDPOINT OF EACH FLANGE EDGE.

**COOKE DOUGLASS FARR LEMONS/LTD**  
ARCHITECTS & ENGINEERS

3780 INTERSTATE 65 NORTH/JACKSON, MS 39211/(601)368-3110

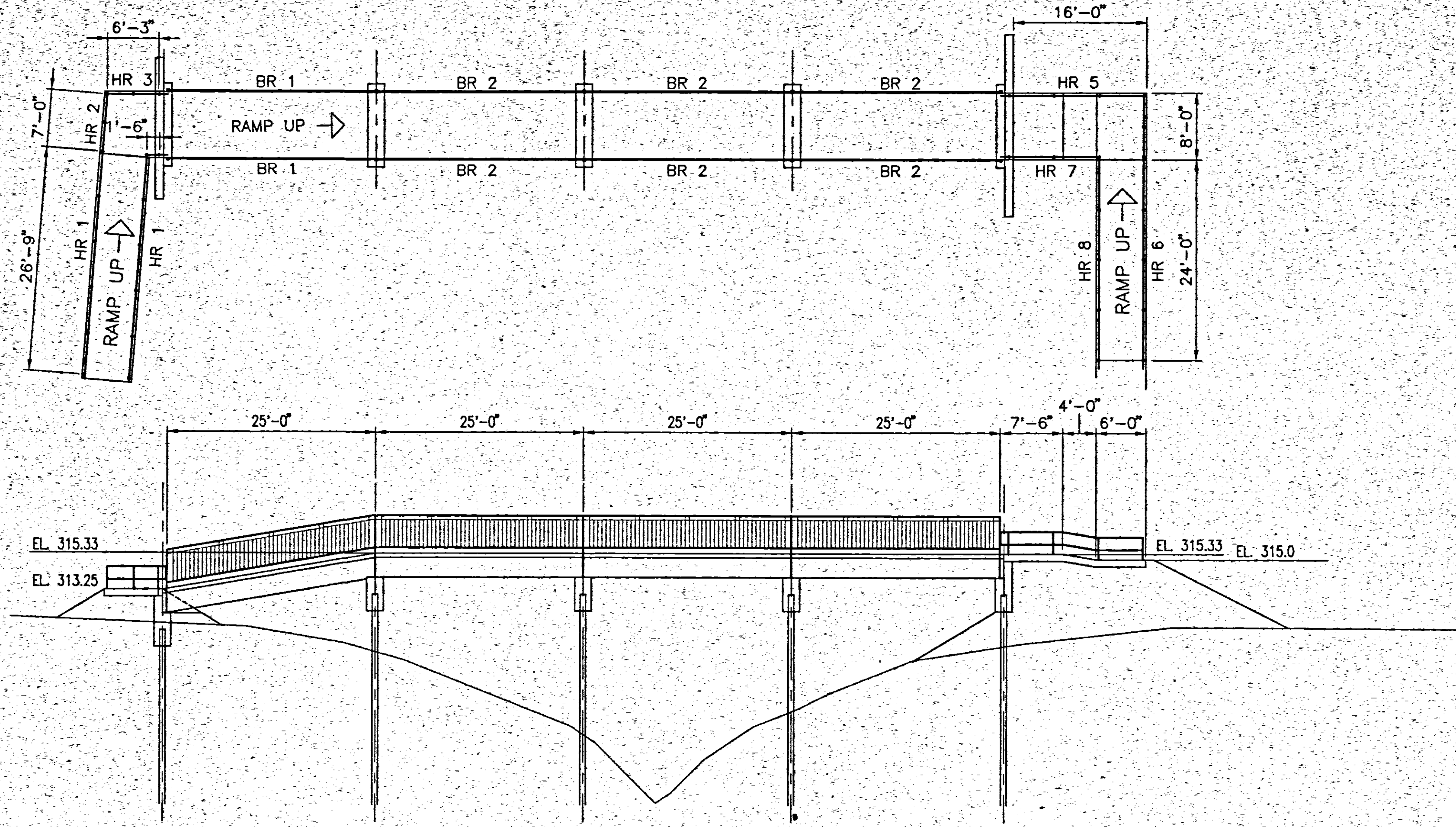
**City of Ridgeland Tennis Center**

Ridgeland, MS

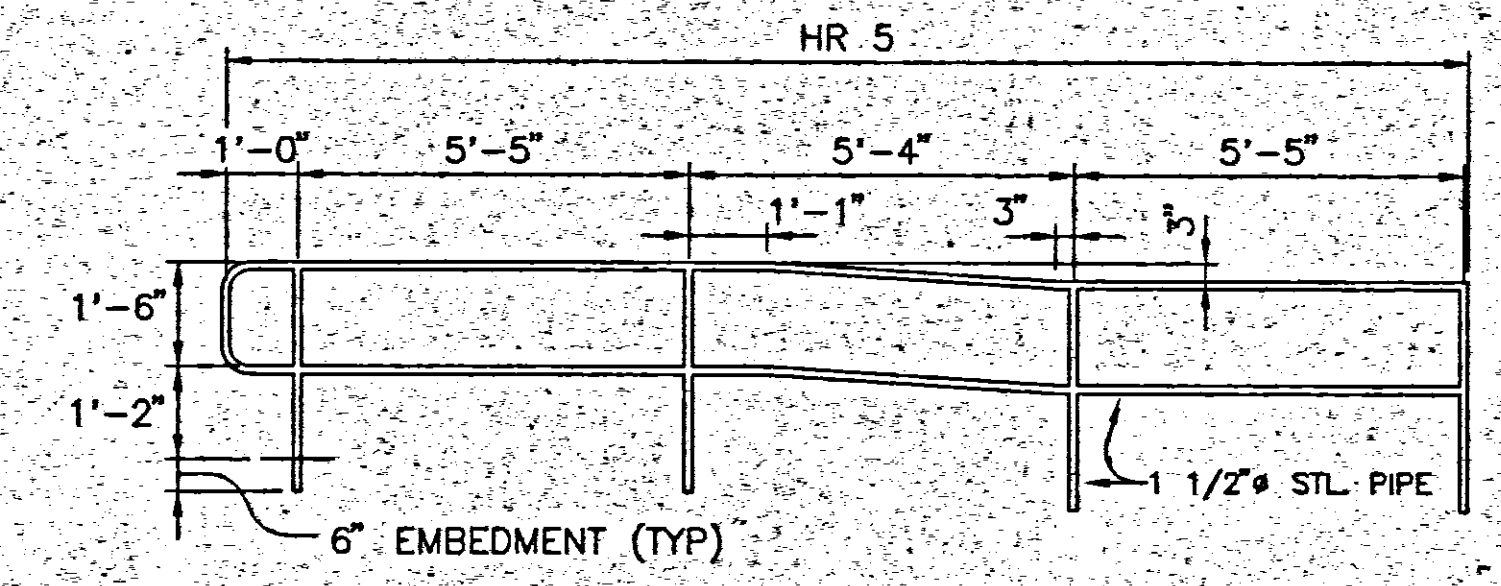
PROJECT TITLE: **BRIDGE PLAN AND ELEVATION SECTIONS AND DETAILS**

PROJECT NO. 95-022	SHEET NUMBER
DATE 01/97	<b>C-3</b>
DRAWN WILLIAMS	OF
CHECKED COOKE	

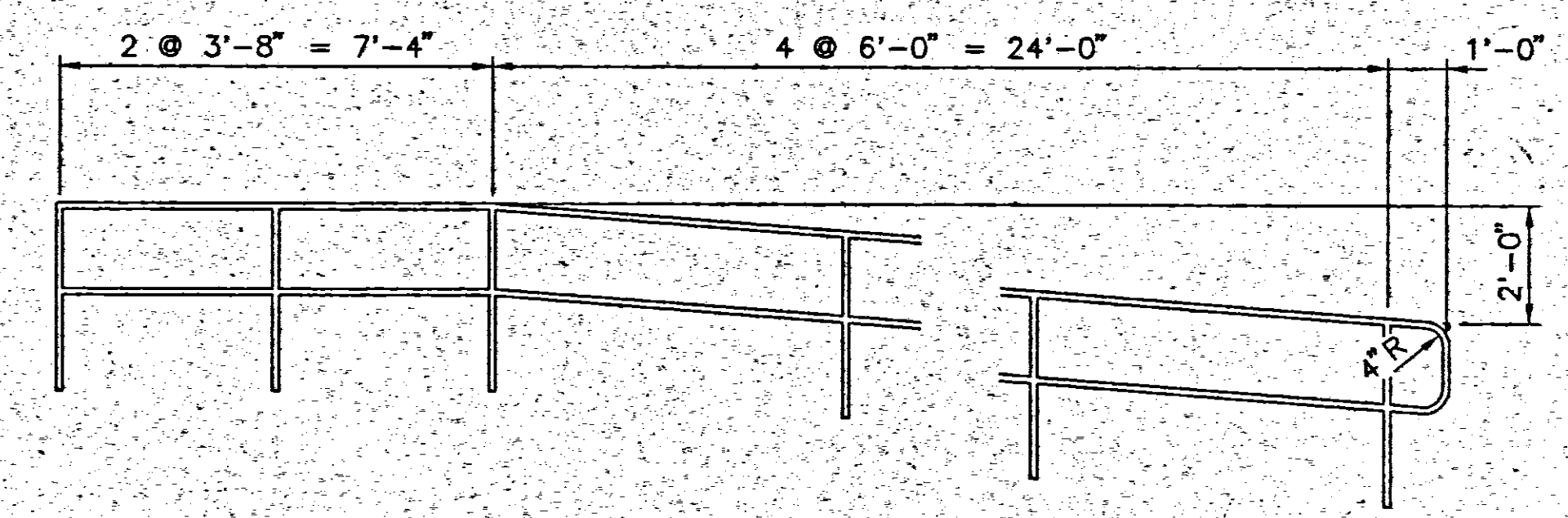




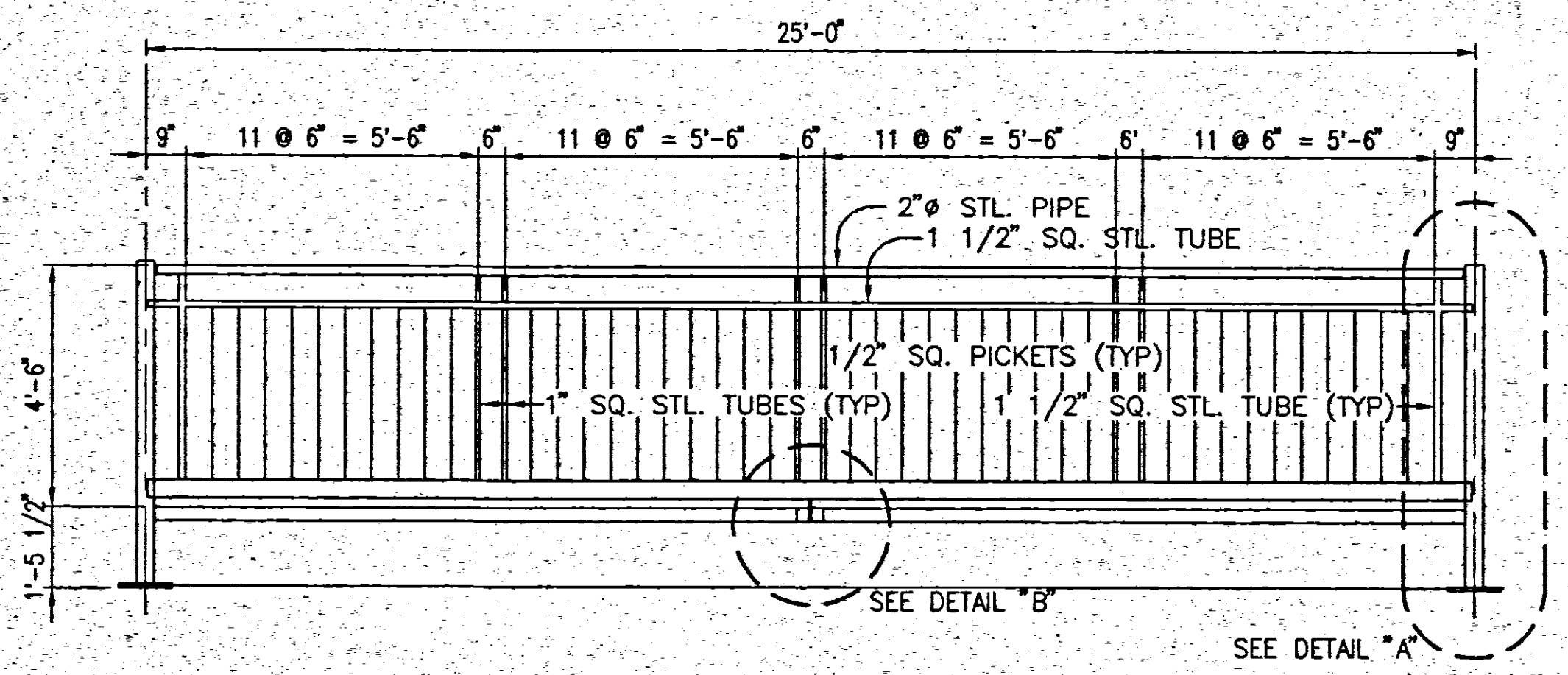
**BRIDGE PLAN AND ELEVATION**  
 HORIZ. 1" = 10'-0"  
 VERT. 1" = 5'-0"



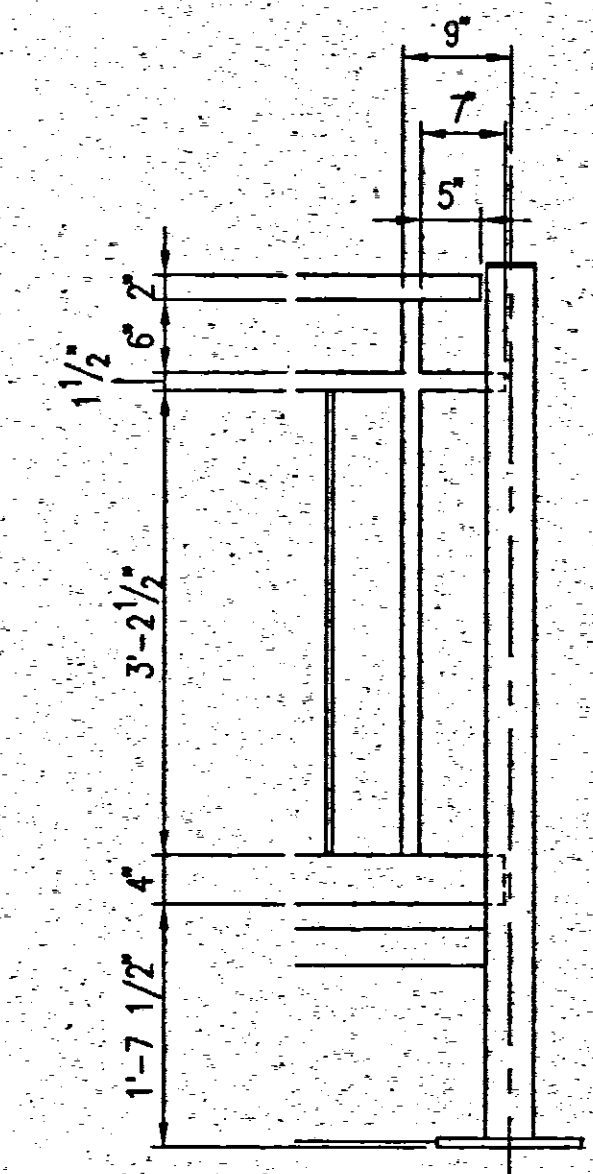
**HANDRAIL DETAIL - HR 5**  
 OTHER HANDRAILS SIMILAR SCALE: 3/8" = 1'-0"



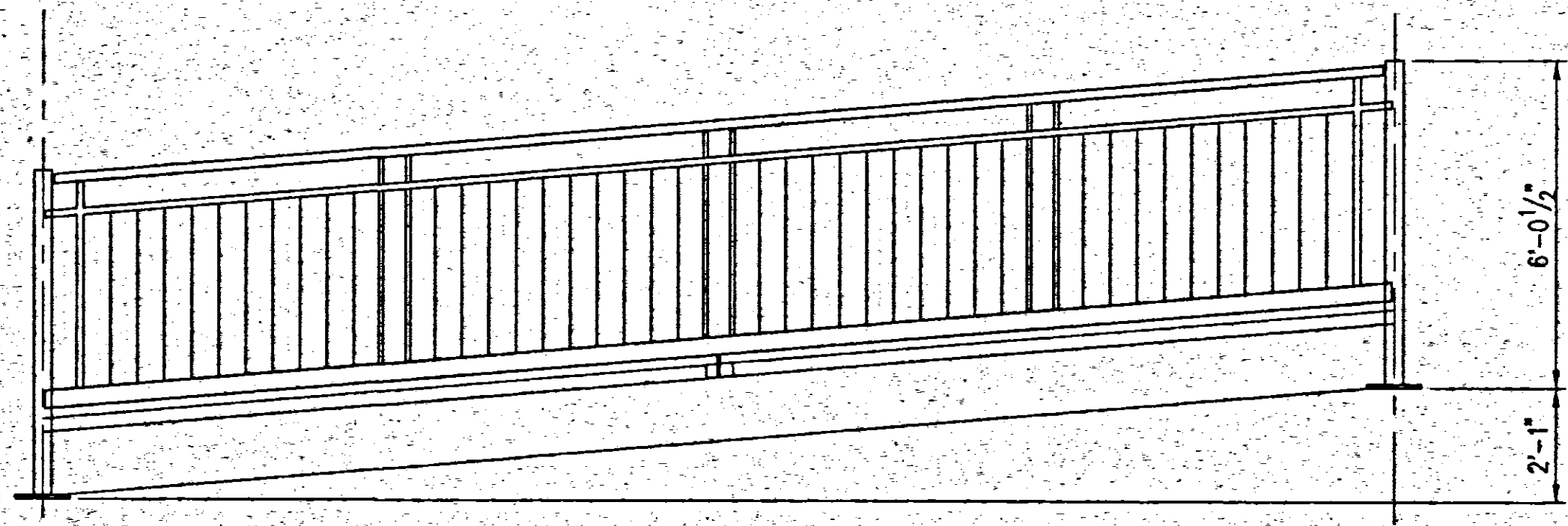
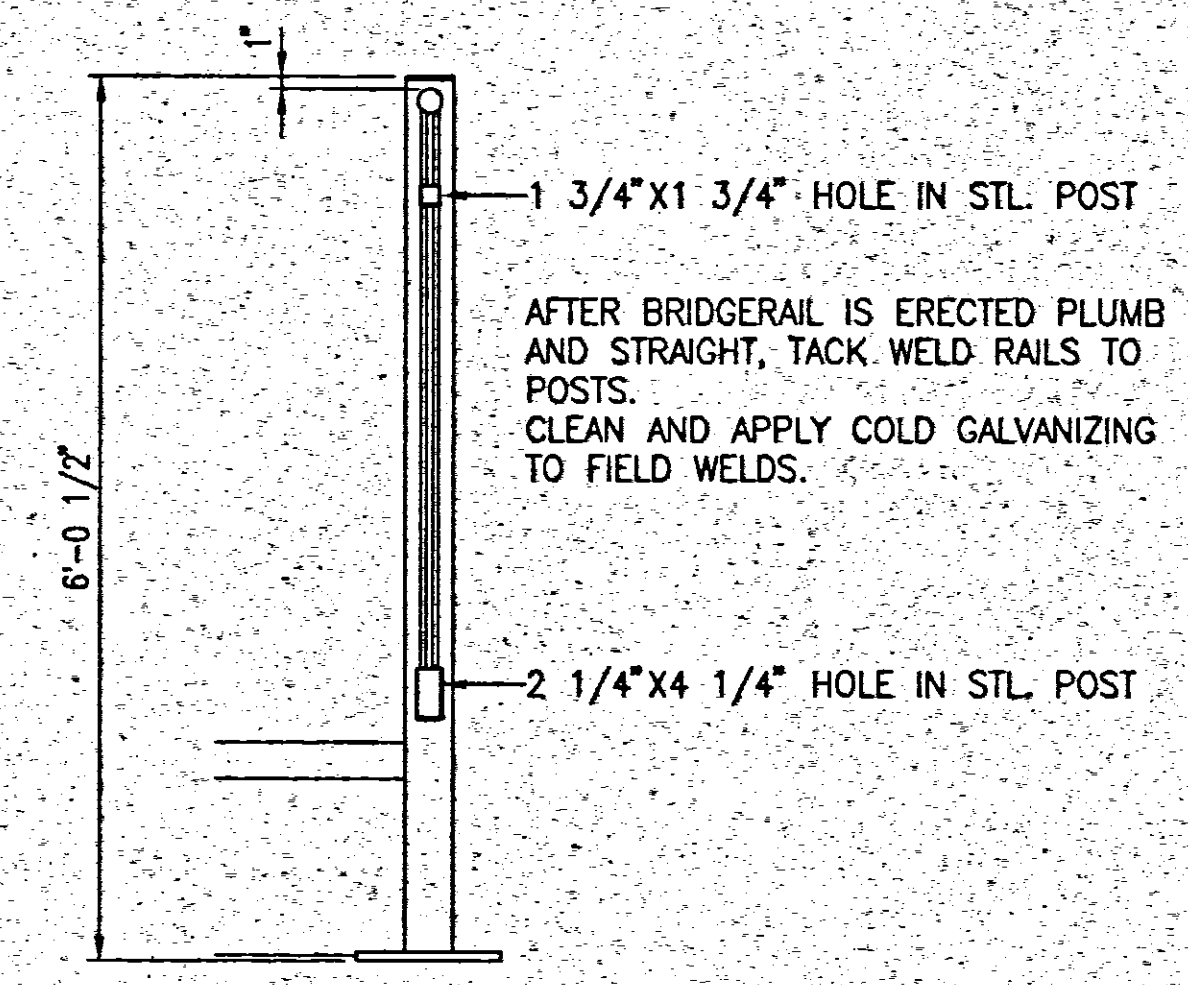
**HANDRAIL DETAIL - HR 6**  
 OTHER HANDRAILS SIMILAR SCALE: 3/8" = 1'-0"



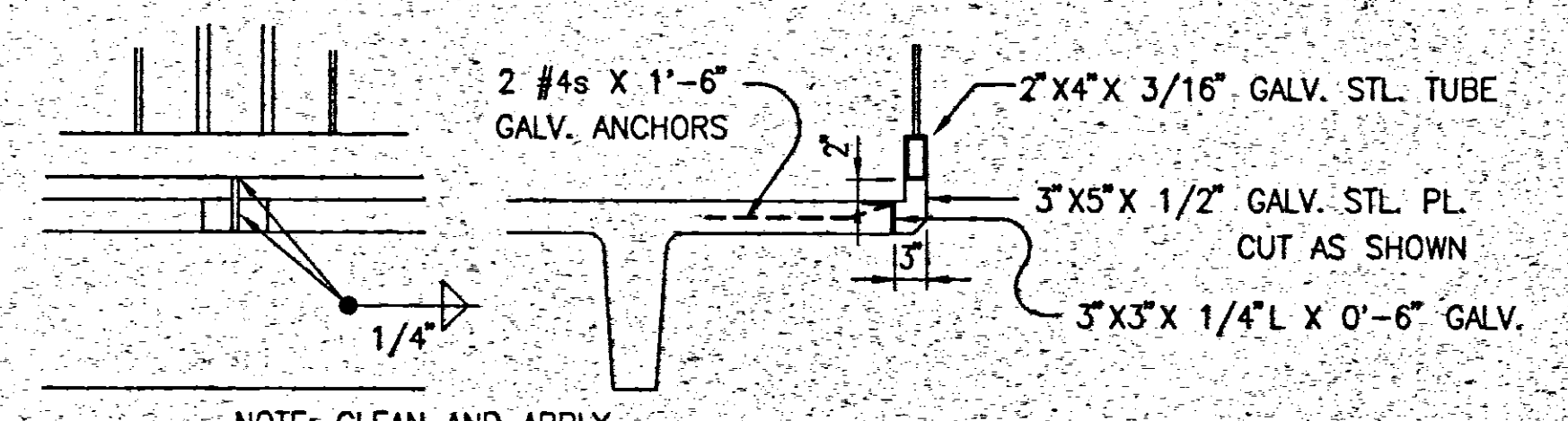
**BR-2**  
 SCALE: 3/8" = 1'-0"



**DETAIL "A"** SCALE: 3/4" = 1'-0"



**BR-1**  
 SCALE: 3/8" = 1'-0"



NOTE: CLEAN AND APPLY COLD GALVANIZING COATING TO FIELD WELDS.

**DETAIL "B"** SCALE: 3/4" = 1'-0"

NO.	REVISIONS	DATE

NOTE:  
 HANDRAILS AND BRIDGERAILS SHALL BE WELDED CONSTRUCTION AND HOT-DIPPED GALVANIZED AFTER FABRICATION. WELDS SHALL BE GROUND SMOOTH.

**COOKE DOUGLASS FARR LEMONS/LTD**  
 ARCHITECTS & ENGINEERS  
  
 8700 INTERSTATE 60 NORTH/JACKSON, MS 39211/(601)366-8110

**CITY OF RIDGELAND**  
**TENNIS CENTER**  
 PROJECT NAME  
 RIDGELAND, MISSISSIPPI

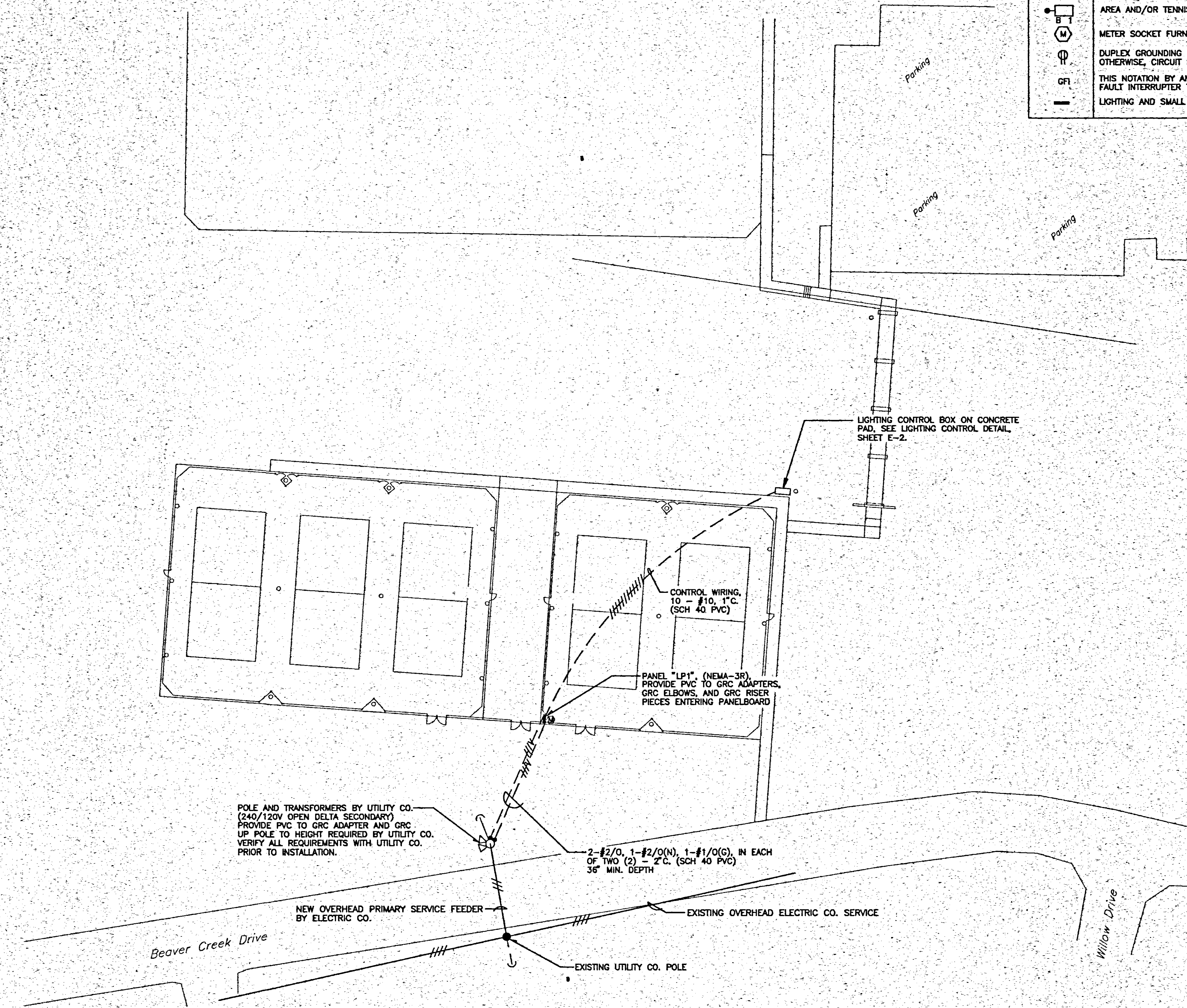
BRIDGE AND RAMP  
 HANDRAIL DETAILS

	PROJECT NO. 95-022	SECRET NUMBER
	DATE 01/97	<b>C-4</b>
	DRAWN BY WILLIAMS	
	CHECKED BY COOKE	



### ELECTRICAL SYMBOLS LEGEND

	BRANCH CIRCUIT CONCEALED IN OR UNDER FLOOR SLAB AS DIRECTED, NUMBER OF CONDUCTORS, SIZE.
	INDICATES GREEN GROUNDING CONDUCTOR, SIZED PER CIRCUIT.
	HOMERUN, PANEL AND CIRCUIT DESIGNATION, NUMBER OF CONDUCTORS.
	AREA AND/OR TENNIS COURT LIGHTING SYSTEM FIXTURE WITH FIXTURE SYMBOL AND CIRCUIT NUMBER.
	METER SOCKET FURNISHED AND INSTALLED BY DIVISION 16.
	DUPLEX GROUNDING RECEPTACLE, 120 VOLTS, NEMA 5-20R, MOUNT CENTERLINE UP 18" UNLESS NOTED OTHERWISE, CIRCUIT NUMBER.
	THIS NOTATION BY ANY RECEPTACLE SYMBOL INDICATES DUPLEX GROUNDABLE, 120 VOLTS, NEMA 5-20R, GROUND FAULT INTERRUPTER TYPE.
	LIGHTING AND SMALL POWER PANEL, FREESTANDING, 250 VOLT SYSTEM.



POLE AND TRANSFORMERS BY UTILITY CO. (240/120V OPEN DELTA SECONDARY) PROVIDE PVC TO GRC ADAPTER AND GRC UP POLE TO HEIGHT REQUIRED BY UTILITY CO. VERIFY ALL REQUIREMENTS WITH UTILITY CO. PRIOR TO INSTALLATION.

2-#2/O, 1-#2/O(N), 1-#1/O(G), IN EACH OF TWO (2) - 2" C. (SCH 40 PVC) 36" MIN. DEPTH

NEW OVERHEAD PRIMARY SERVICE FEEDER BY ELECTRIC CO.

EXISTING OVERHEAD ELECTRIC CO. SERVICE

EXISTING UTILITY CO. POLE

**SITE PLAN - ELECTRICAL**

SCALE: 1" = 30'

NO.	REVISIONS	DATE

**COOKE DOUGLASS FARR LEMONS / LTD**  
ARCHITECTS & ENGINEERS

9780 INTERSTATE 55 NORTH/JACKSON, MS 39211/(601)368-8110

PROJECT  
**City of Ridgeland  
Tennis Center**

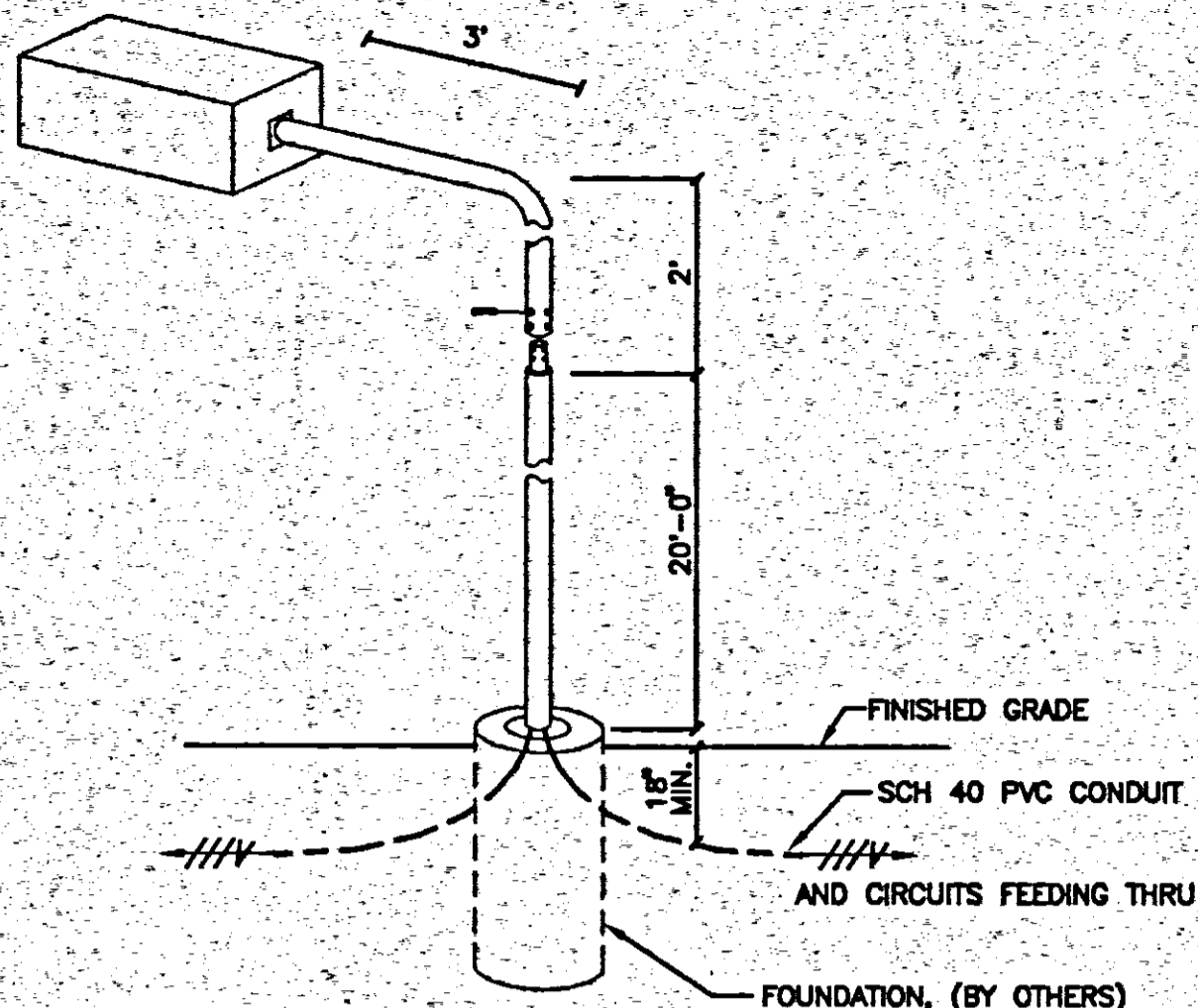
Ridgeland, MS

SHEET TITLE  
SITE PLAN - ELECTRICAL AND  
ELECTRICAL SYMBOLS LEGEND

	PROJECT NO. 95-022	SHEET NUMBER
	DATE 01/97	<b>E-1</b>
	DRAWN HASIE	OF 2
	CHECKED BROWNING	

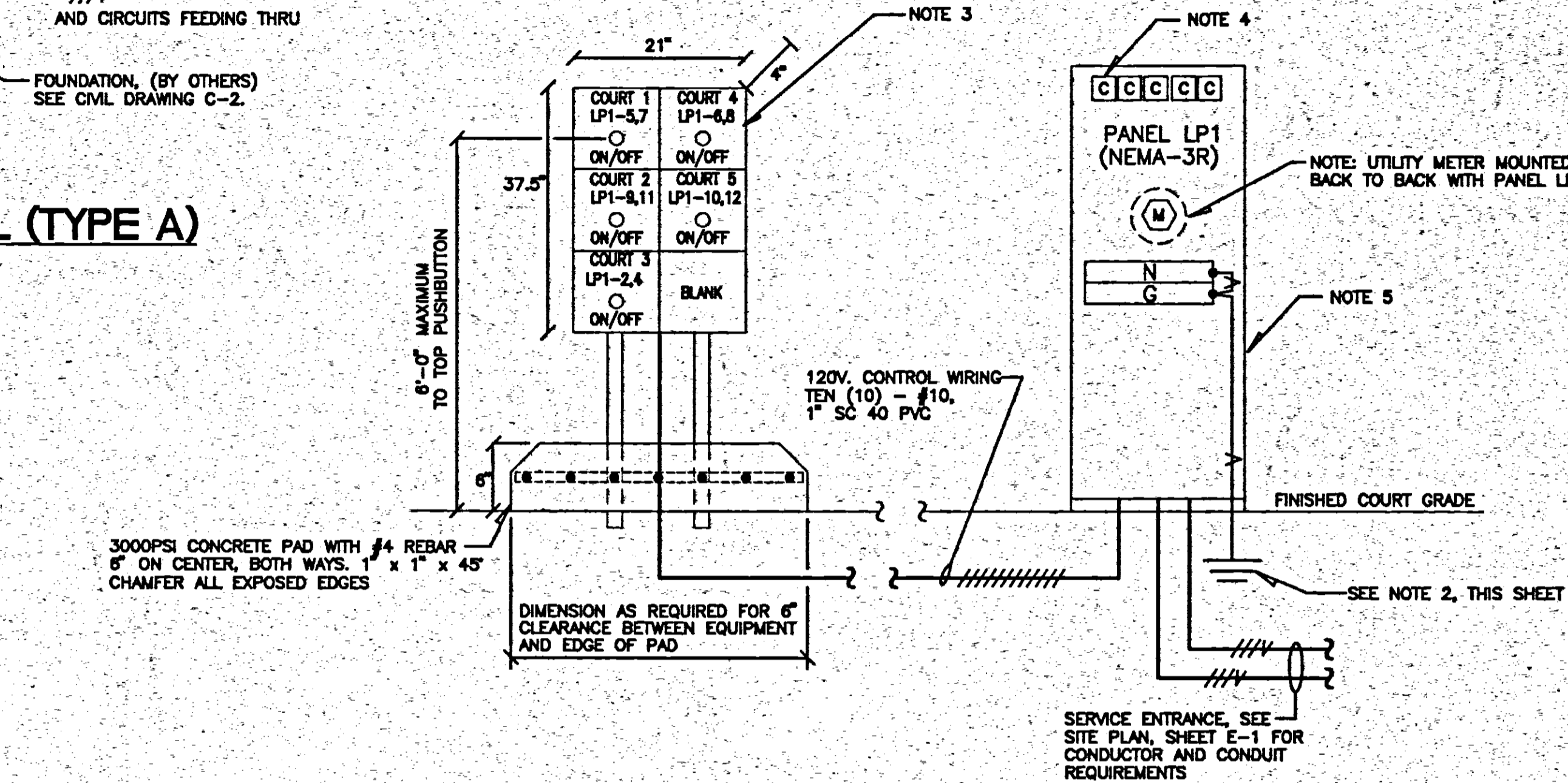
6:15022(90)22EVS F-1 08/17 14.13.31 1997





**FIXTURE DETAIL (TYPE A)**  
NO SCALE

NOTE: COORDINATE WITH FOUNDATION CONTRACTOR FOR CONDUIT AND ANCHOR BOLTS TO BE IN PLACE WHEN CONCRETE IS POURED.

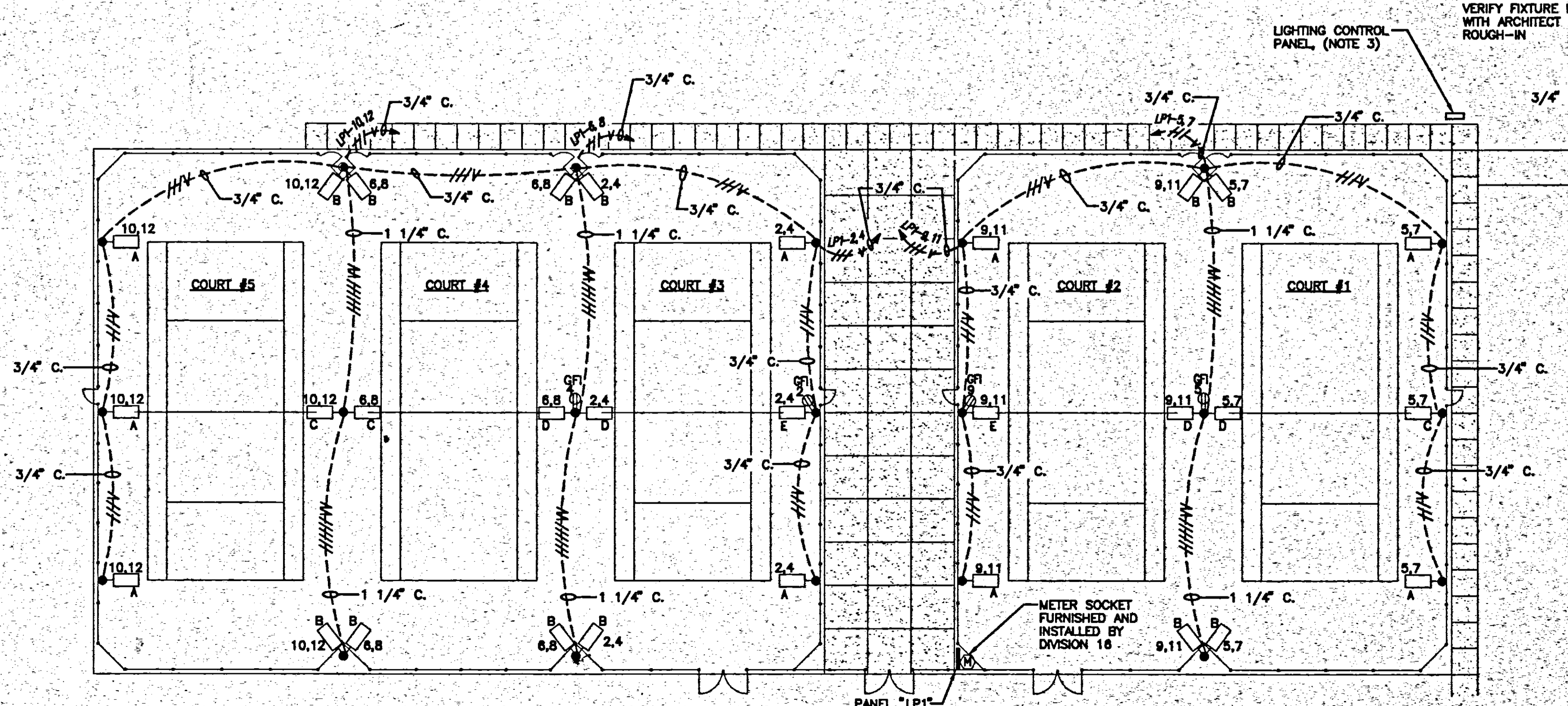


**LIGHTING CONTROL BOX / PANEL - DETAIL**  
NO SCALE

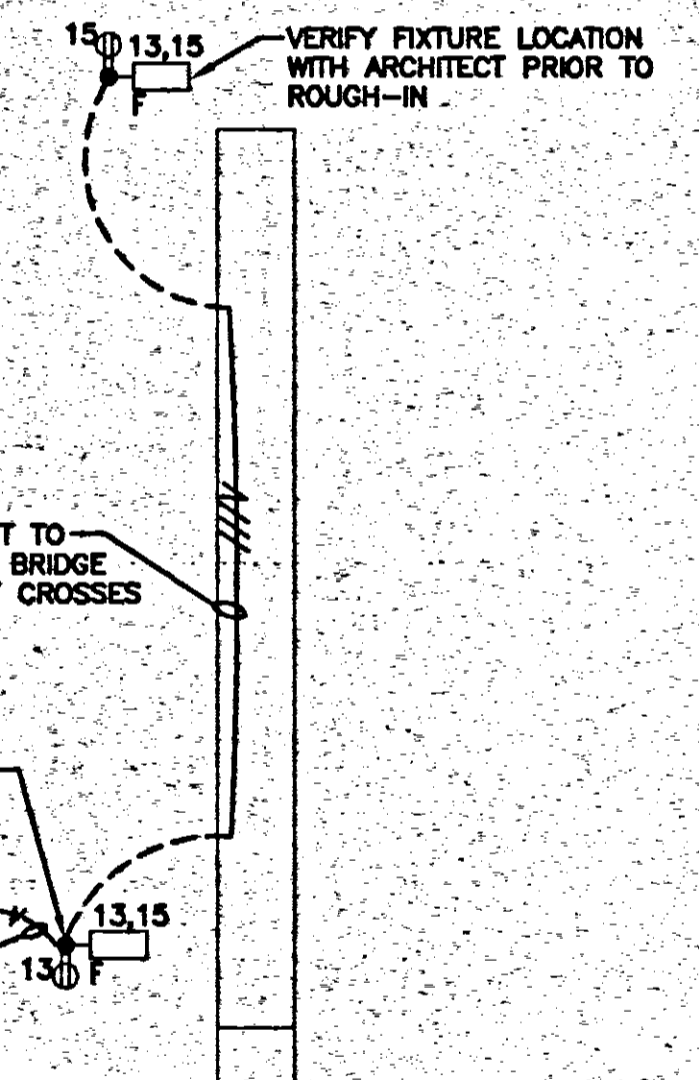
LIGHTING FIXTURE SCHEDULE						
VOLTS	SYMBOL	WATTS	DESCRIPTION	MANUFACTURER	CAT. NO.	MOUNTING
240	A	1100	POLE MOUNTED FORWARD THROW CUTOFF LUMINAIRE, SINGLE UPSWEEP BRACKET	COURTSIDER XL	CXL-A-4TBC-240V-GRN-GA	20" POLE ANCHORED TO BASE
240	B	1100	POLE MOUNTED FORWARD THROW CUTOFF LUMINAIRE, TWIN 70 UPSWEEP BRACKET	COURTSIDER XL	CXL-C-4TBC-240V-GRN-GA	20" POLE ANCHORED TO BASE
240	C	1100	POLE MOUNTED FORWARD THROW CUTOFF LUMINAIRE, TWIN 180 UPSWEEP BRACKET	COURTSIDER XL	CXL-B-4TBC-240V-GRN-GA	20" POLE ANCHORED TO BASE
240	D	1100	POLE MOUNTED FORWARD THROW CUTOFF LUMINAIRE, TWIN 180 UPSWEEP BRACKET WITH G.F.I. RECEPTACLE (W.P.) ON POLE	COURTSIDER XL	CXL-B-4TBC-240V-GRN-GA-GFI-RPER2	20" POLE ANCHORED TO BASE
240	E	1100	POLE MOUNTED FORWARD THROW CUTOFF LUMINAIRE, SINGLE UPSWEEP BRACKET WITH G.F.I. RECEPTACLE (W.P.) ON POLE	COURTSIDER XL	CXL-A-4TBC-240V-GRN-GA-GFI-RPER2	20" POLE ANCHORED TO BASE
240	F	1100	POLE MOUNTED FORWARD THROW CUTOFF LUMINAIRE, SINGLE UPSWEEP BRACKET WITH G.F.I. RECEPTACLE (W.P.) ON POLE	COURTSIDER XL	CXL-A-4TBC-240V-GRN-GA-GFI-RPER2	20" POLE ANCHORED TO BASE

CIRCUIT SCHEDULE			
PANEL: "LP1"		LOCATION: COURT #2	
VOLTAGE: 240/120 MLO: 400A		MOUNTING: SEE NOTE BELOW	
W/GRND: 1Ø 3W		MAINBREAKER: 350A2P MINIMUM KALC: 10	
CKT NO.	BREAKER AMP	POLE	LOAD
1	40	2	SPARE
3	40	2	COURT #1
5	40	2	COURT #2
9	40	2	AREA LIGHTS
11			
13	20	2	SPACE
15			SPACE
17			SPACE
19			SPACE
21			SPACE
23			SPACE

PANEL NOTE: PANELBOARD SHALL BE NEMA-3R ENCLOSURE AND ANCHORED TO CONCRETE AT FINISHED COURT GRADE, SEE LIGHTING CONTROL DETAIL, THIS SHEET.



**LIGHTING PLAN** (NOTE 1)  
SCALE: 1" = 20'



NO.	REVISION	DATE

- NOTES:
- ALL PHASE CONDUCTORS SHOWN ON LIGHTING PLAN SHALL BE #8 AWG. ALL GROUNDING CONDUCTORS SHOWN ON LIGHTING PLAN SHALL BE #10 AWG. ALL CONDUIT SHALL BE SCH 40 PVC, UNLESS NOTED OTHERWISE.
  - BOND #1/0 COPPER GROUND TO INCOMING FEEDER CONDUIT, NEUTRAL AND GROUND BUSSES. CONNECT #1/0 COPPER GROUND TO THREE (3) 5/8" X 10" COPPER CLAD GROUND RODS 10' ON CENTER IN A TRIANGULAR PATTERN, CADWELD ALL CONNECTIONS.
  - LIGHTING CONTROL BOX SHALL BE NEMA-3R ENCLOSURE WITH ON/OFF MOMENTARY PUSHBUTTON CONTROLS AS MANUFACTURED BY G.E. MOUNT LIGHTING CONTROL BOX TO TWO(2) GALVANIZED UNISTRUT CHANNEL SET IN CONCRETE. ENCLOSURE SHALL HAVE A LOCKABLE FRONT DOOR TO PREVENT UNAUTHORIZED ACCESS TO PUSHBUTTONS.
  - TYPICAL OF "C" THIS SHEET. GE MECHANICALLY HELD LIGHTING CONTACTORS, 60A2P, CAT # CR360MA402A02 (OR APPROVED EQUAL) TO CONTROL LIGHTING CIRCUIT HOMERUNS. SEE CIRCUIT SCHEDULE THIS SHEET.
  - PANEL "LP1" AND LIGHTING CONTROL CONTACTORS SHALL BE ENCLOSED IN A NEMA-3R BOX WITH A LOCKABLE FRONT DOOR TO PREVENT UNAUTHORIZED ACCESS. BOX TO BE MOUNTED FLUSH WITH FINAL GRADE OF COURTS.

**COOKE DOUGLASS FARR LEMONS/LTD**  
ARCHITECTS & ENGINEERS  
**CDFL**  
3780 INTERSTATE 66 NORTH/LACKSON, MS 38211/(601)366-3110

PROJECT  
**City of Ridgeland Tennis Center**  
Ridgeland, MS

SHEET TITLE  
COURT PLAN - LIGHTING, LIGHT FIXTURE SCHEDULE, PANEL SCHEDULES AND DETAILS

PROJECT NO. 95-022  
DATE 01/97  
DRAWN HASIE  
CHECKED [Signature]  
BROWNING  
SHEET NUMBER E-2  
of 2