

RIDGELAND, MISS.

WATER IMPROVEMENT

KOEHLER & REYNOLDS
ENGINEERS

BIDS RECEIVED 7:30 P.M. FEB. 7, 1961

AS BUILT PLOTTED
DEC. 11, 1961

MAYOR
HARBOUR HALL
ALDERMEN
M.B. RIDGEWAY
GEORGE COVINGTON
ELMER HART
GEORGE JURGENS
ROBERT JURGENS

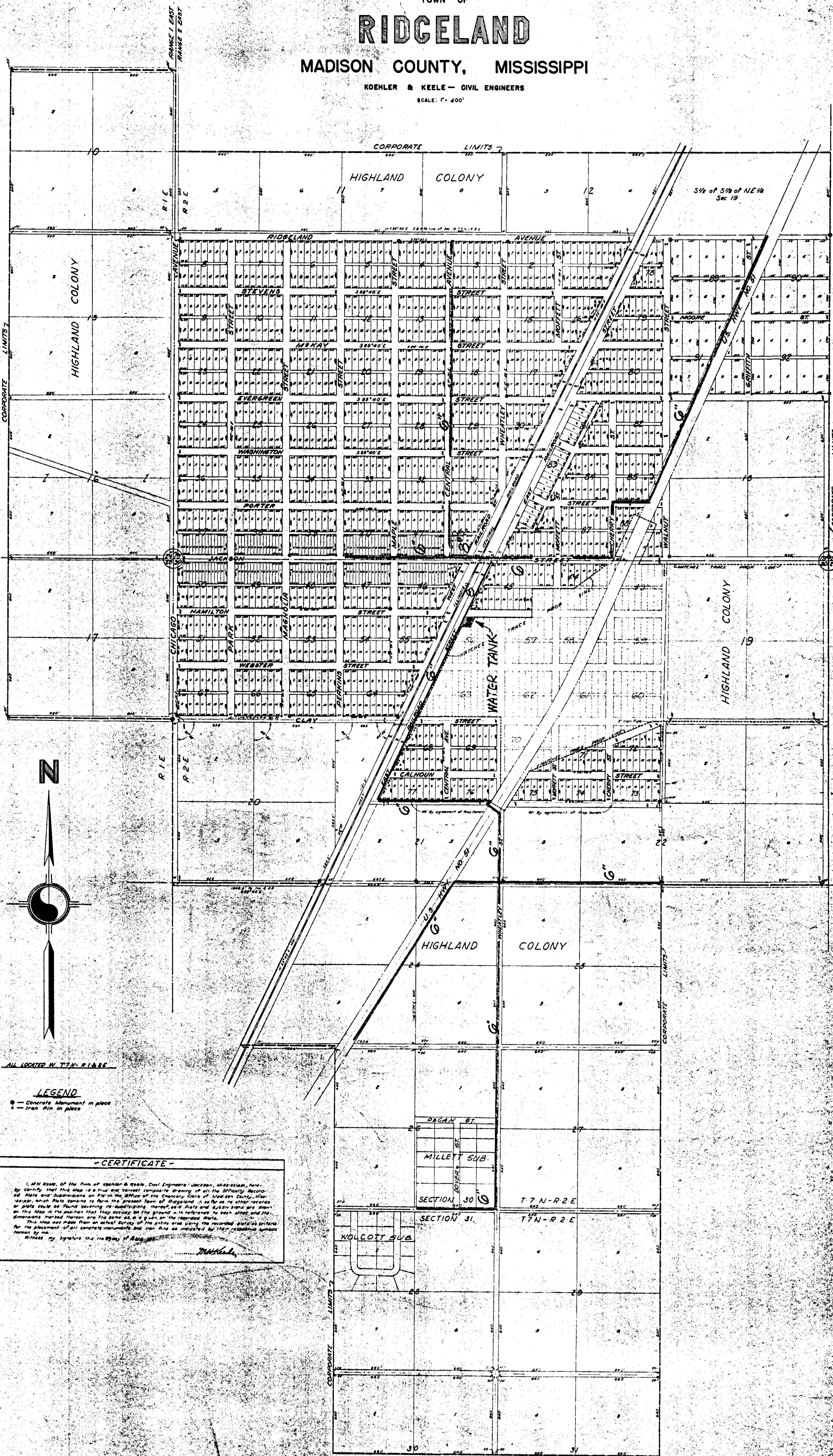
SHEET NO.	TITLE
1	TITLE SHEET
2	LAYOUT SHEET
3	DETAIL SHEET
4-5	JACKSON ST. - PERKINS ST. TO CHERRY ST TO US #51 (NORTH)
6-7	US #51 (NORTH) - PORTER ST. TO RIDGELAND AVE.
8-9	CENTRAL ST. ~ JACKSON ST. TO RIDGELAND AVE.
10-11	RAILROAD ST. ~ MOON ST. TO JACKSON ST.
12	MOON ST. ~ RAILROAD ST. TO US #51 (SOUTH)
13-15	WHEATLEY ST. ~ COOKEY ST. TO MOON ST.
16	COOKEY ST. ~ WHEATLEY ST. WEST 650 FT.
17-18	SCHOOL ST. ~ US #51 (SOUTH) EAST 1800 FT.
19	US #51 (SOUTH) ~ SCHOOL ST. SOUTH 1500 FT.



PWP 1834

TOWN OF
RIDGELAND
 MADISON COUNTY, MISSISSIPPI

KOEHLER & KEELE - CIVIL ENGINEERS
 SCALE: 1" = 400'



ALL LOCATED IN T7N-R1&R2

LEGEND
 ● Concrete monument in place
 ○ Iron Pin in place

-CERTIFICATE-

I, J. H. Keel, of the firm of Koehler & Keele, Civil Engineers, Jackson, Mississippi, hereby certify that the Map is a true and correct copy of the original Record Map and Subdivisions on file in the Office of the County Clerk of Madison County, Mississippi, which Map appears to form the ground plan of Ridgeland, in so far as no other records or plats show an actual survey, re-surveying, or subdivision of parts and subdivisions are shown on this Map in the portion that they occupy on the ground - in reference to each other and the Government marked thereon and that same as it is shown on the above plat.

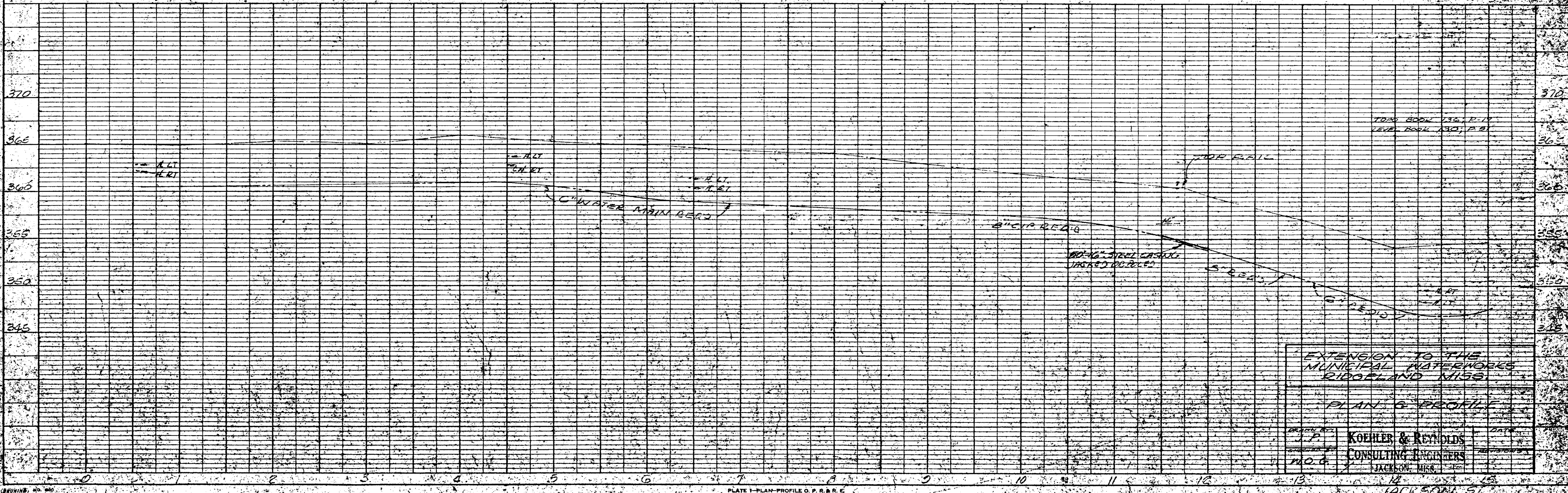
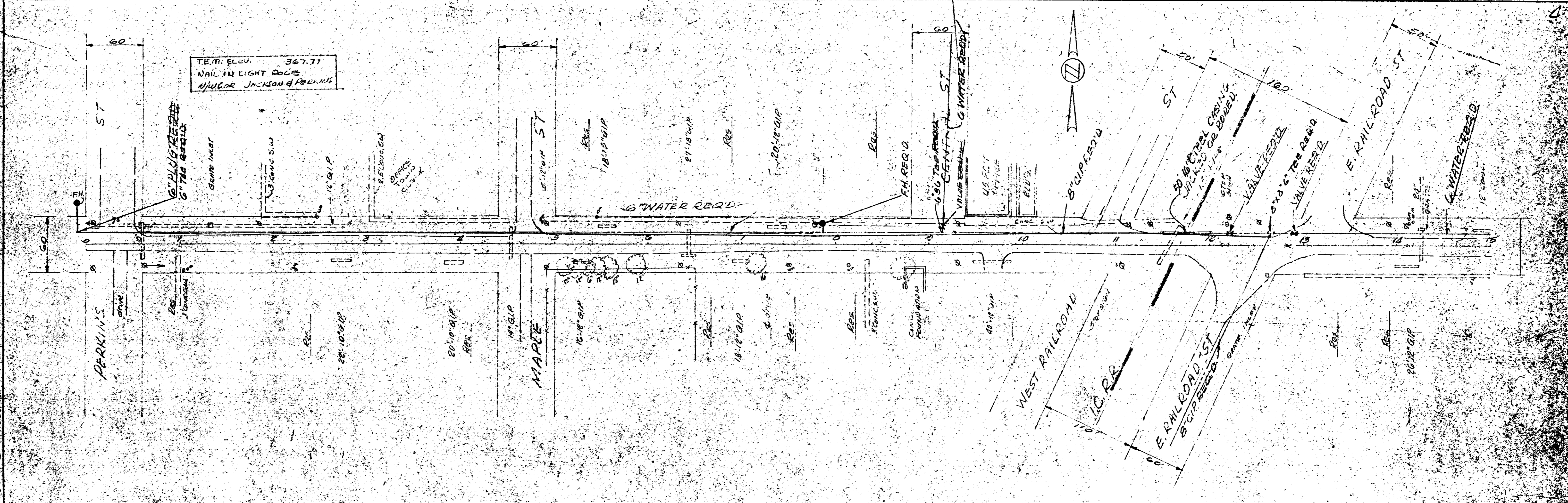
This Map was made from an actual survey of the entire area using the recorded data as prima facie evidence of all concrete monuments and iron pins as indicated by their respective symbols herein by me.

Witness my signature this 14th day of May, 1914.

J. H. Keel

DATE	
BY	
CHECKED	
APPROVED	
PROJECT	
SCALE	
DESCRIPTION	
REVISIONS	

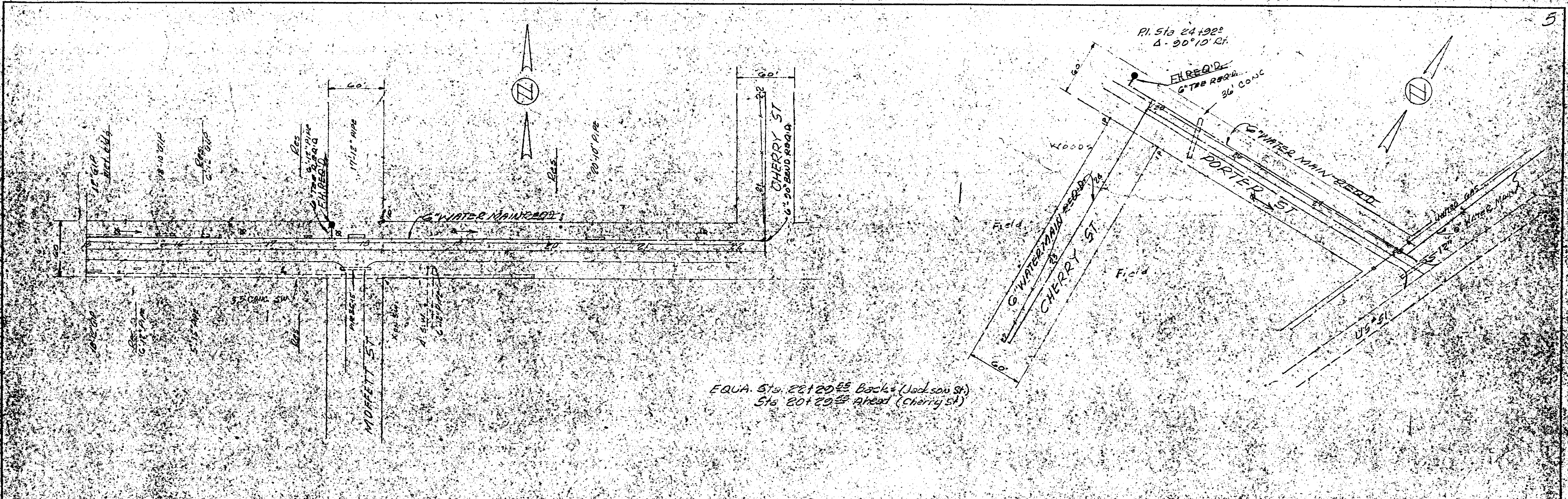
DATE	
BY	
CHECKED	
APPROVED	
PROJECT	
SCALE	
DESCRIPTION	
REVISIONS	



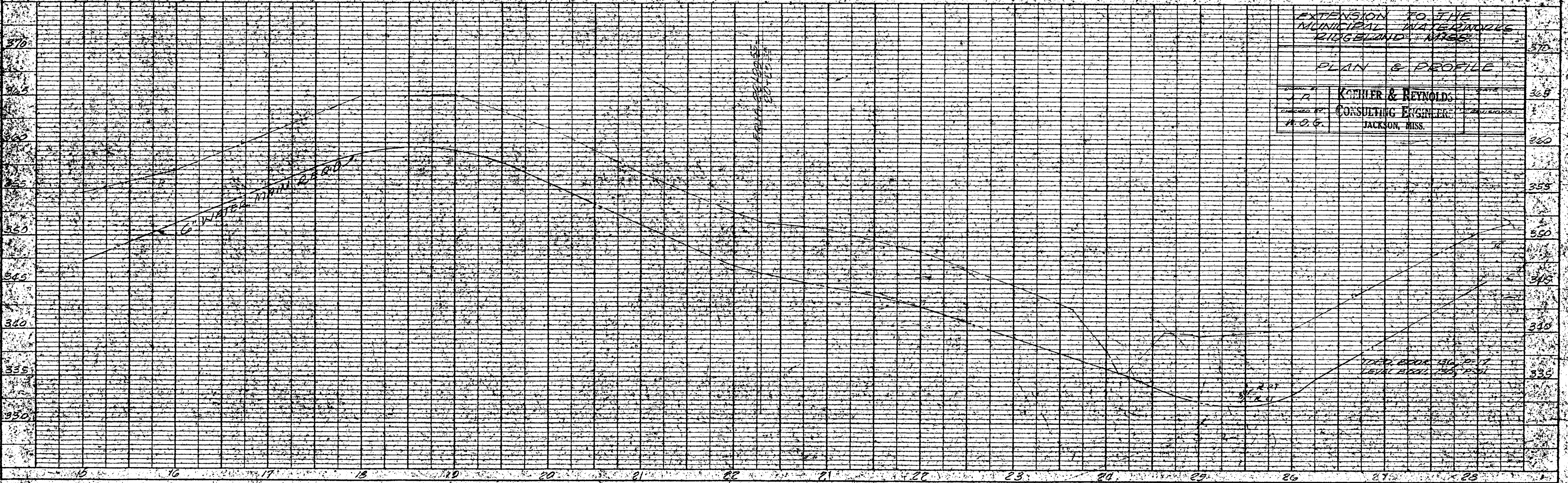
EXTENSION TO THE MUNICIPAL WATERWORKS RIDGELAND MISS.

PLAN & PROFILE

ENGINEER
J.P.
NO. 6
KOEHLER & REYNOLDS
CONSULTING ENGINEERS
JACKSON, MISS.

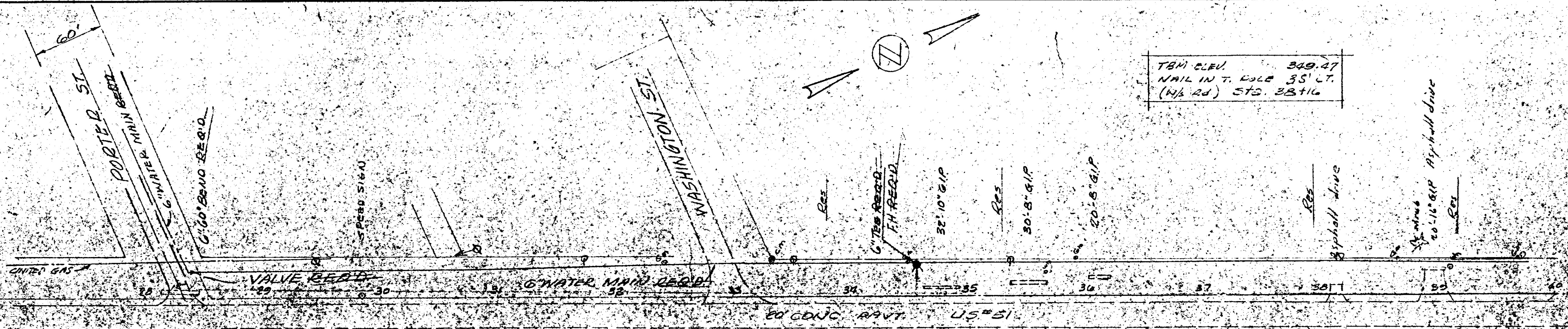


EQUA. Sta. 20+00^{SS} Backs (Jackson St)
Sta. 20+20^{SS} ahead (Cherry St)

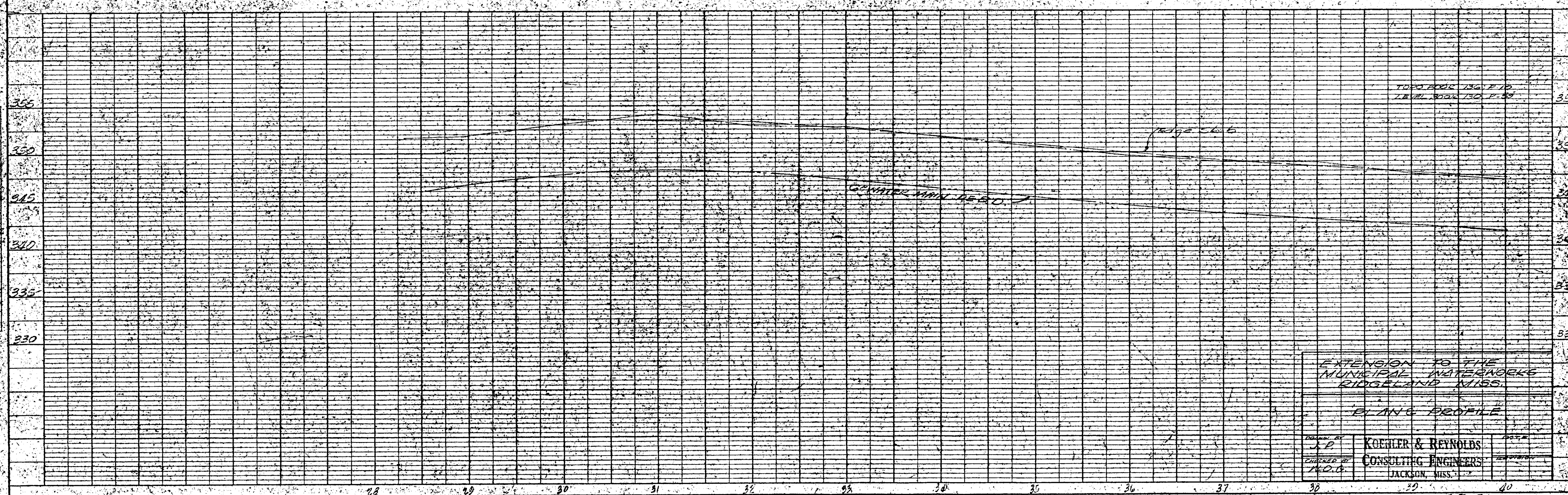


EXTENSION TO FIVE MUNICIPAL WATER MAINS KIDGELAND - MISS.	
PLAN & PROFILE	
DESIGNED BY J. T.	KOHLER & REYNOLDS CONSULTING ENGINEERS JACKSON, MISS.
CHECKED BY H. O. G.	
DATE A. O. G.	

TBM Elev. 349.27
NAIL IN T. WALL 35' LT.
(N/2 Rd) STS. 28+16



Edge Side
Base line



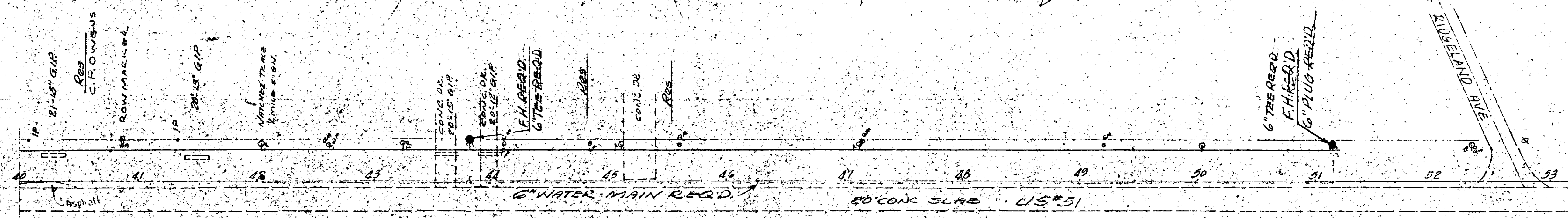
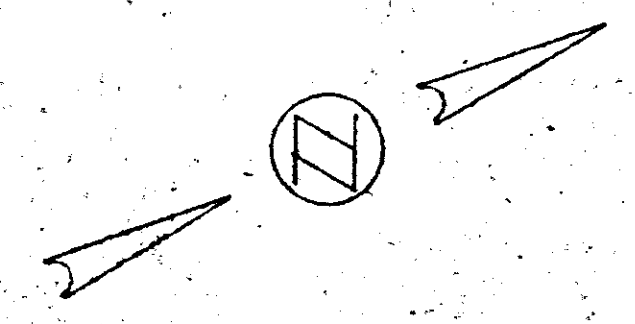
EXTENSION TO THE
MUNICIPAL WATERWORKS
RIDGELAND MISS.

PLAN & PROFILE

DESIGNED BY J.D.	DATE
CHECKED BY M.O.B.	DATE
KOETLER & REYNOLDS CONSULTING ENGINEERS JACKSON, MISS.	

1. ALL WORK TO BE DONE IN ACCORDANCE WITH THE SPECIFICATIONS FOR THE CONSTRUCTION OF SEWER LINES AND MANHOLES, 1958 EDITION, AS AMENDED, PUBLISHED BY THE MISSISSIPPI DEPARTMENT OF HIGHWAYS AND TRANSPORTATION.

PROFILE
 1. ALL WORK TO BE DONE IN ACCORDANCE WITH THE SPECIFICATIONS FOR THE CONSTRUCTION OF SEWER LINES AND MANHOLES, 1958 EDITION, AS AMENDED, PUBLISHED BY THE MISSISSIPPI DEPARTMENT OF HIGHWAYS AND TRANSPORTATION.

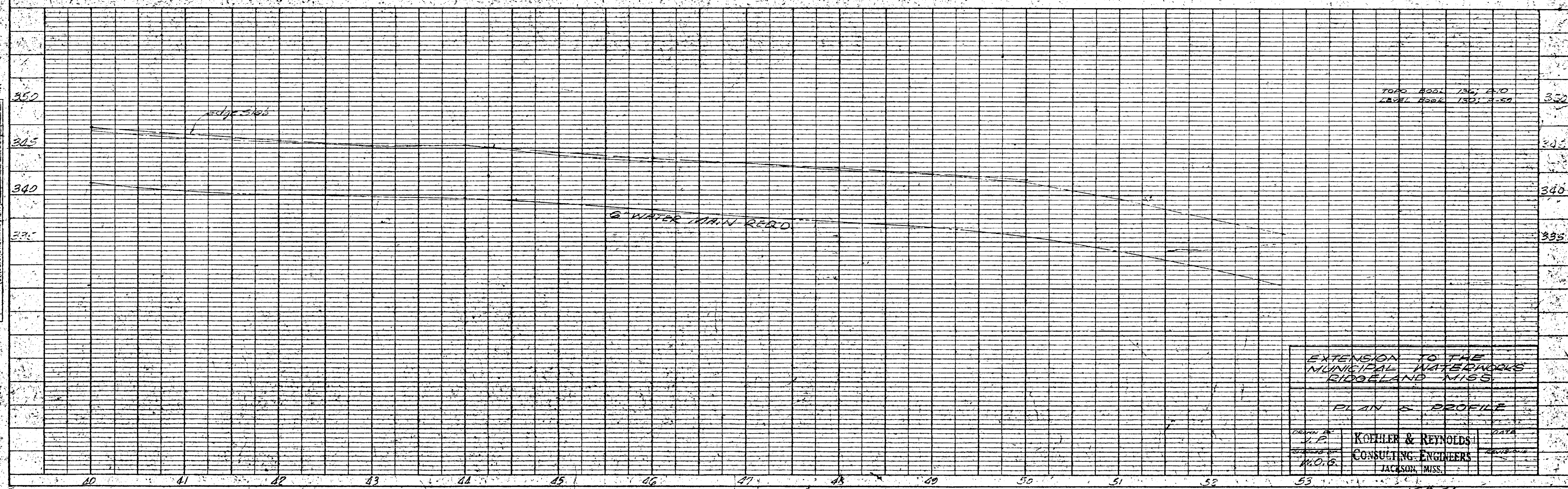


TBM ELEV. 837.54
 NAIL IN GUY HOLE 5/8 COR.
 US 51 & RIGGELAND AVE

Edge line
 Base line

PLAN
 SURVEYED BY
 PLOTTED BY
 CHECKED BY
 DATE

PROFILE
 SURVEYED BY
 PLOTTED BY
 CHECKED BY
 DATE



TOPO BOOK 136, 1210
 LEVEL BOOK 130, 1-50

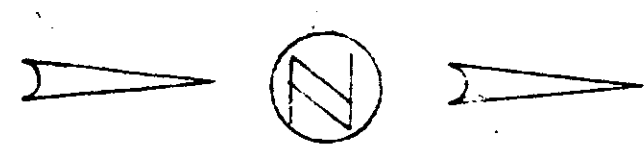
EXTENSION TO THE
 MUNICIPAL WATERWORKS
 RIGGELAND MISS.

PLAN & PROFILE

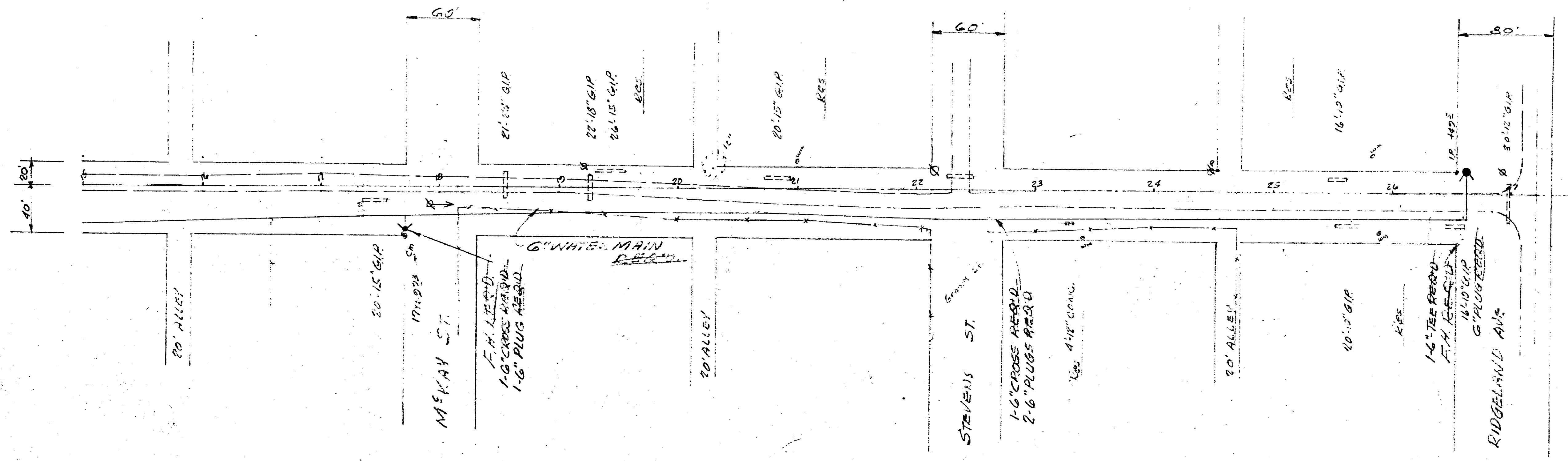
DRAWN BY J.P.	KOHLER & REYNOLDS CONSULTING ENGINEERS JACKSON, MISS.	DATE
CHECKED BY M.O.B.		REVISIONS

US 51
 PORTER ST. TO RIGGELAND AVE

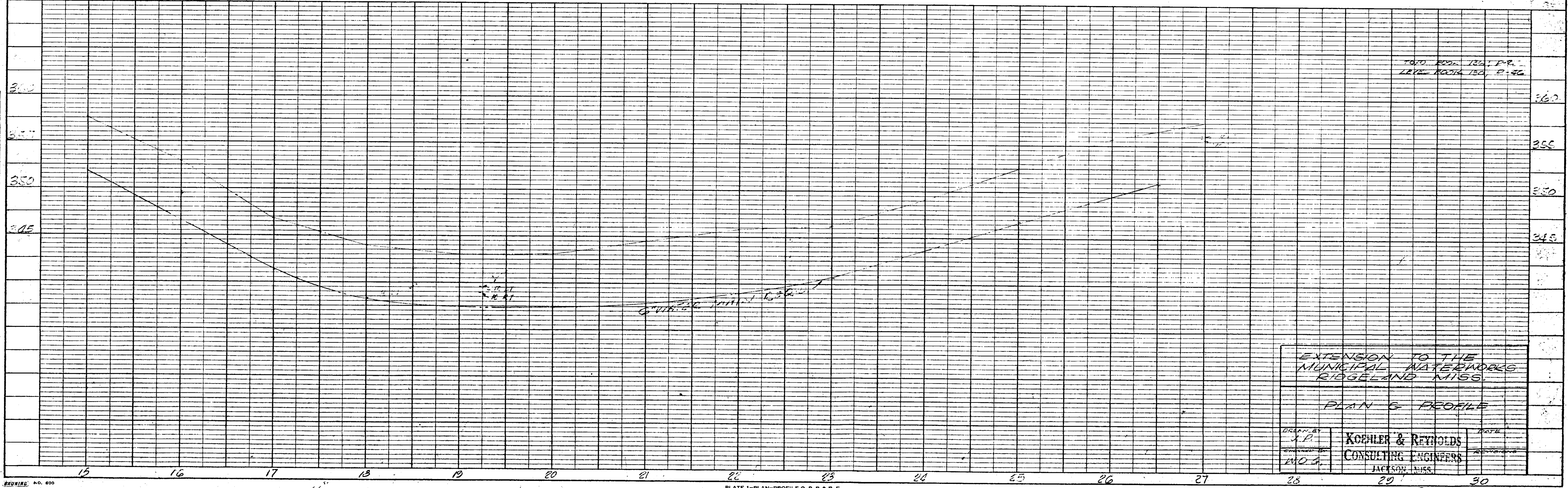
PLAN NO. 24270
 COND. MON. 17162.23



PLAN
 SURVEYED BY
 PLANNED BY
 NOTE BOOK NO.
 DATE
 CHECKED BY
 DATE
 NOTE: NOT CHECKED
 RT. OF WAY CHECKED



PROFILE
 SURVEYED BY
 GRADES CHECKED BY
 NOTE BOOK NO.
 DATE
 CHECKED BY
 DATE
 NOTE: NOT CHECKED
 RT. OF WAY CHECKED



1000 FEET 130' P.P.
 1250 FEET 150' P-46

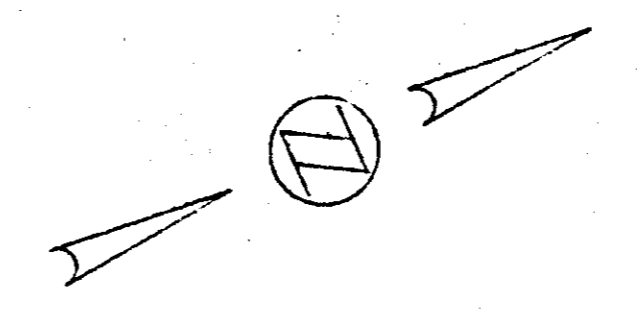
EXTENSION TO THE
 MUNICIPAL WATERWORKS
 RIDGELAND MISS.

PLAN & PROFILE

DRAWN BY J.P.	KOEHLER & REYNOLDS CONSULTING ENGINEERS JACKSON, MISS.	DATE
NO. 1		29

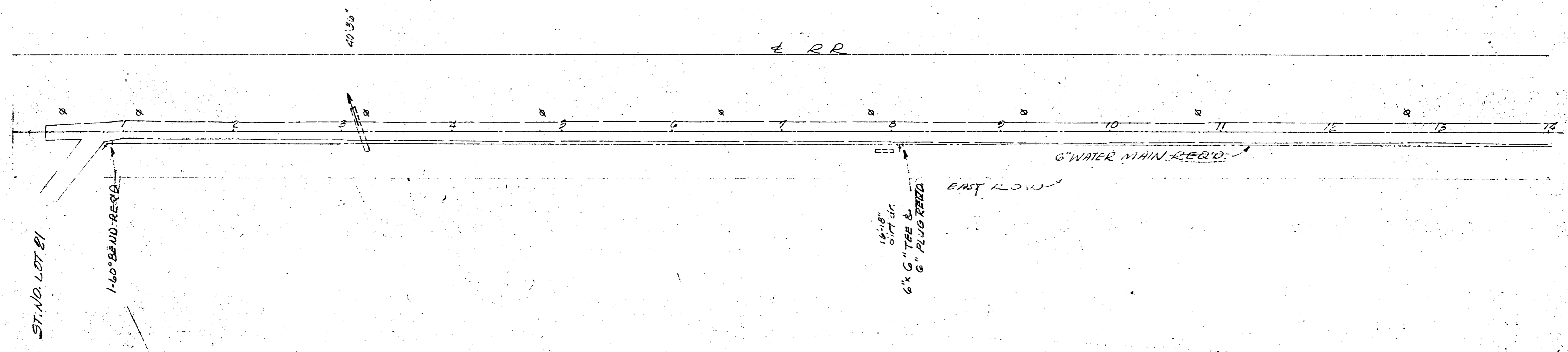
CENTRAL AVE
 JACKSON ST. to RIDGELAND AVE

EQUA. TA 0+20 RR AVE =
TA 0+40 ST. NO. LOT 21



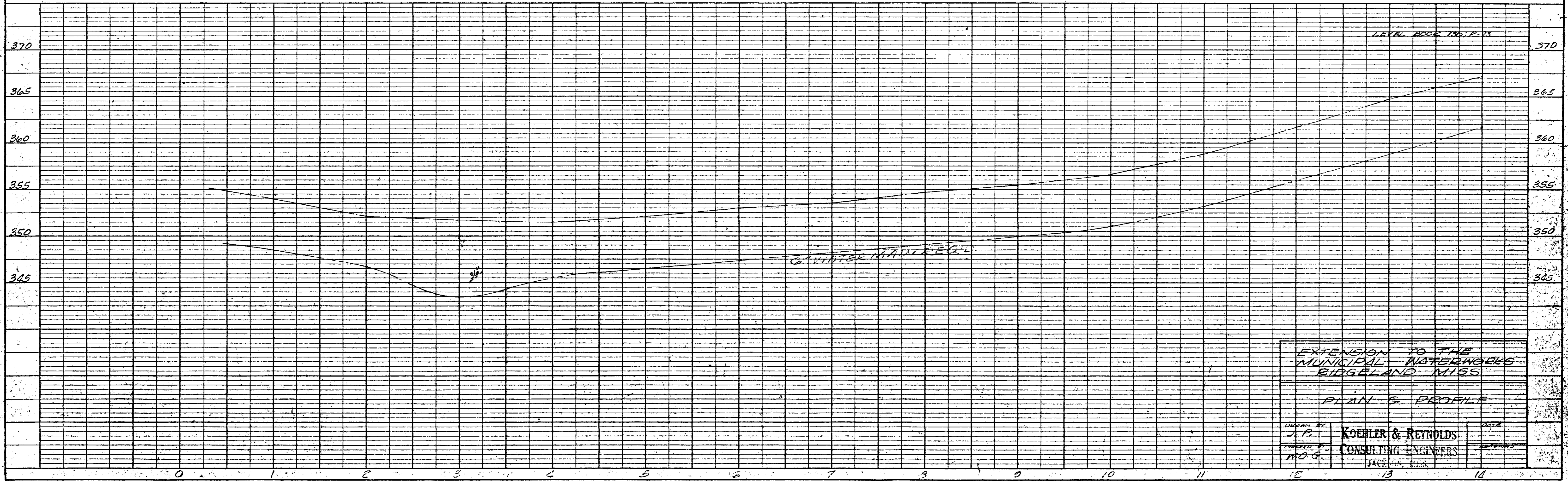
PLAN

DATE	
BY	
SURVEYED	
ADJUSTMENT CHECKED	
NOTE BOOK	
FT. OF ANY CHECKED	
NO.	



PROFILE

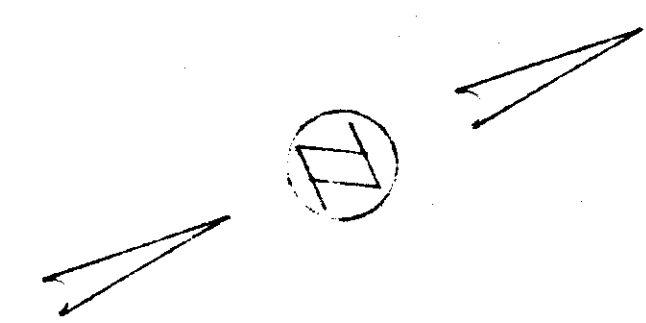
DATE	
BY	
SURVEYED	
GRADES CHECKED	
NOTE BOOK	
E. M. & NOTES	
STRUCTURE NOTATIONS	
NO.	



EXTENSION TO THE
MUNICIPAL WATERWORKS
EDGE LAND MISS

PLAN & PROFILE

DESIGNED BY	J.P.	DATE	
CHECKED BY	M.G.	SURVEYED	
KOEHLER & REYNOLDS		CONSULTING ENGINEERS	
JACKSON, MISS.			



PLAN

DATE: _____

BY: _____

REVISIONS:

NO.	DATE	DESCRIPTION

NOTE: BOOK NO. _____

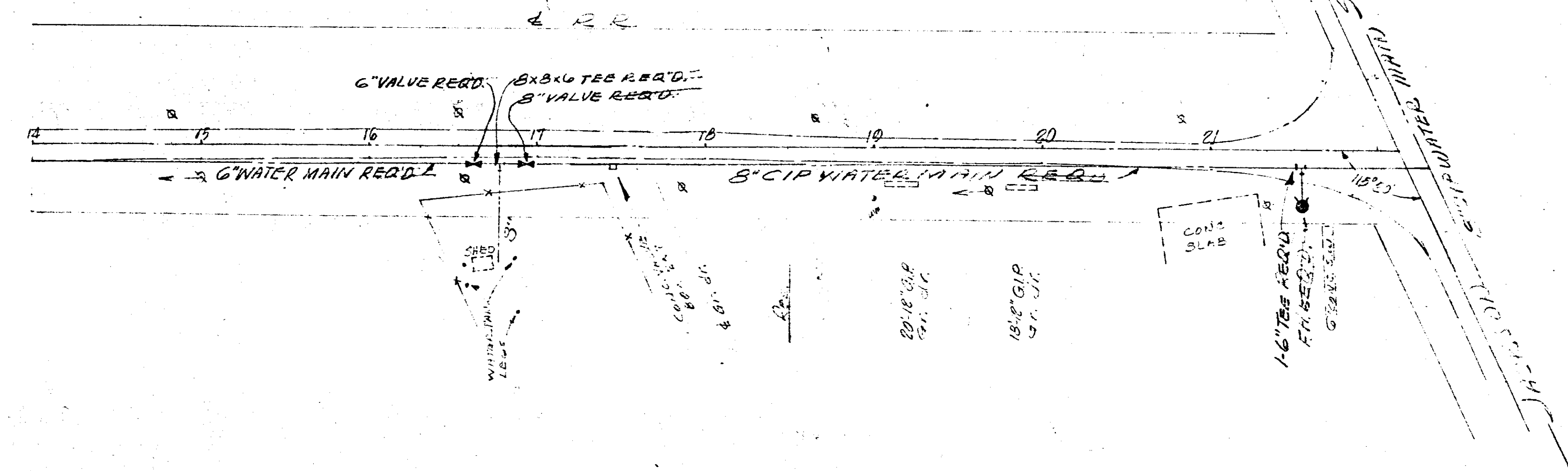
NOTE: SHEET NO. _____

NOTE: CHECKED BY _____

NOTE: DATE CHECKED _____

NOTE: DRAWN BY _____

NOTE: DATE DRAWN _____



Eqn. 22+12.55 R.R. AVE.
12+42.55 JAMESON ST.

PROFILE

DATE: _____

BY: _____

REVISIONS:

NO.	DATE	DESCRIPTION

NOTE: BOOK NO. _____

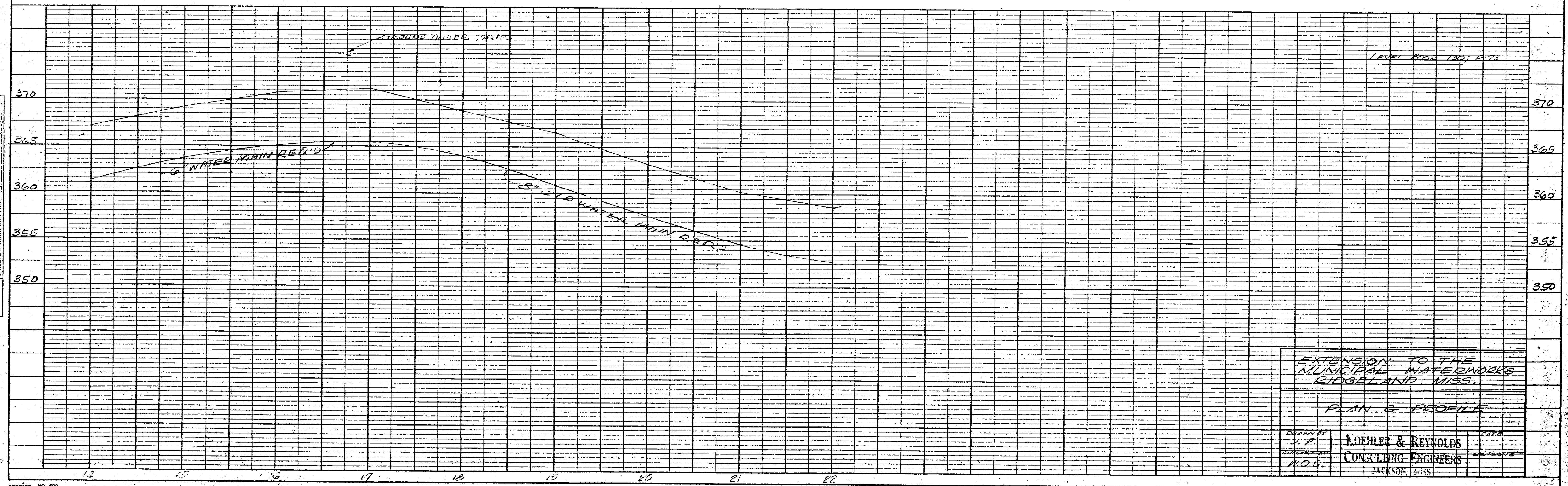
NOTE: SHEET NO. _____

NOTE: CHECKED BY _____

NOTE: DATE CHECKED _____

NOTE: DRAWN BY _____

NOTE: DATE DRAWN _____



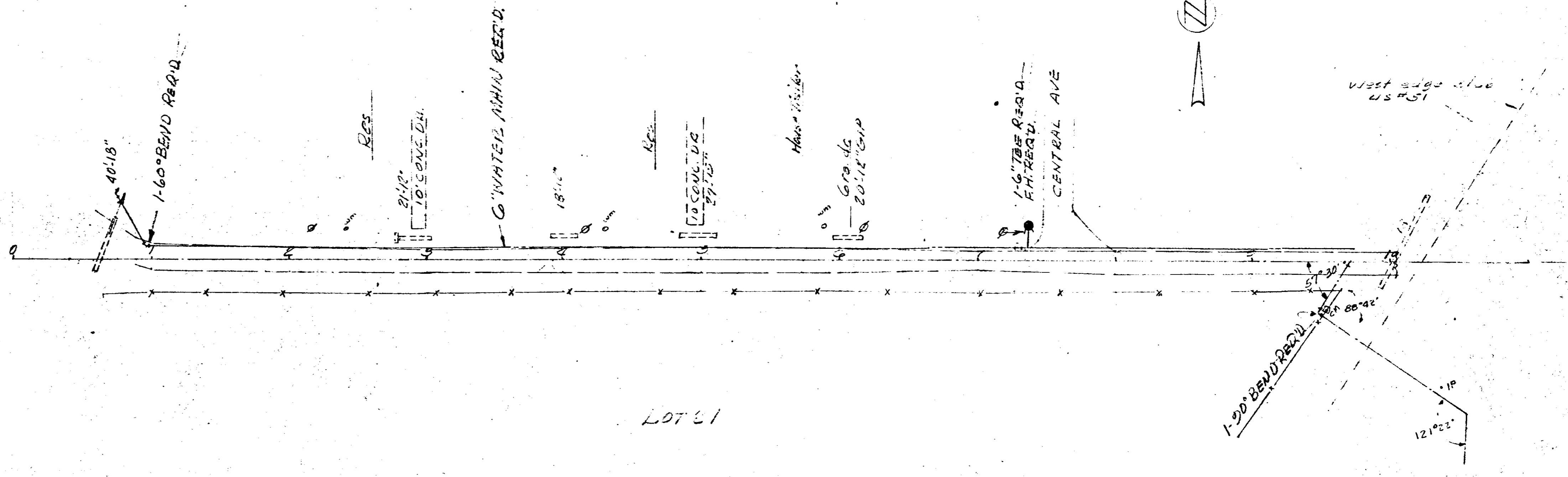
EXTENSION TO THE MUNICIPAL WATERWORKS RIDGELAND, MISS.

PLAN & PROFILE

DRAWN BY J. P.	FOHLER & REYNOLDS CONSULTING ENGINEERS JACKSON, MISS.	DATE
CHECKED BY H.O.G.		REVISIONS

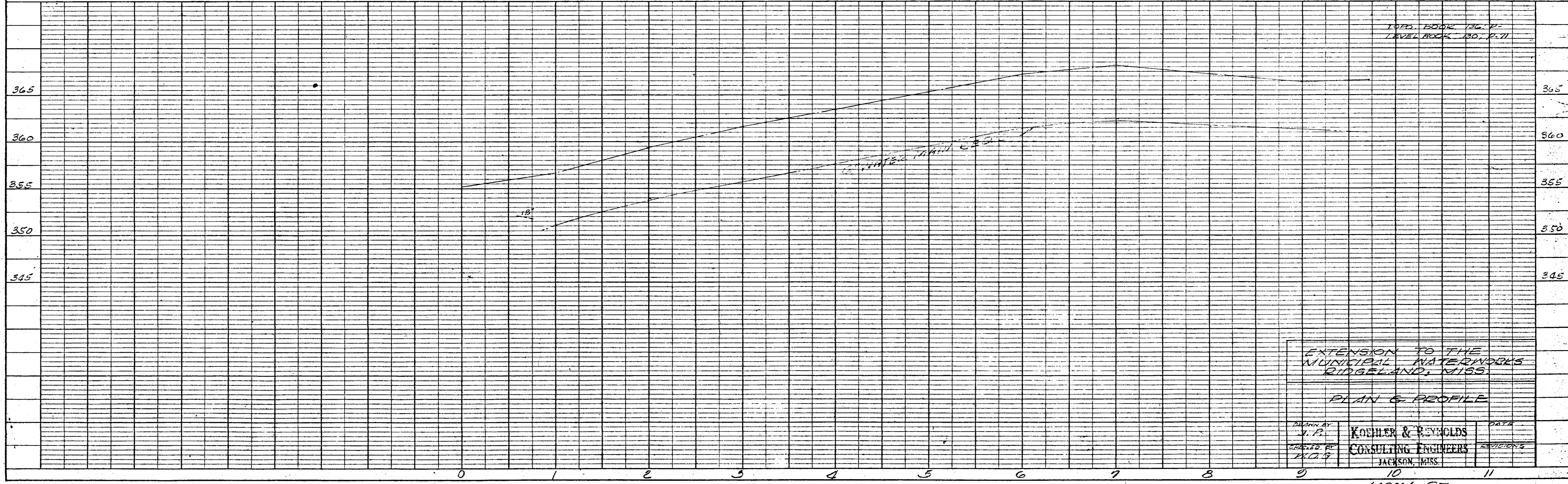
EQUA. STA. 0+00 R.R. H.W.E.
STA 0+40 STREET No. of LOT 61

P.I. 9+73.8 =
34+04.8 - WHEATLEY ST
Δ - 122° 20' N.T.



PLAN
SURVEYED
ALIGNED
RT. OF WAY CHECKED
NOTE BOOK NO. 37

PROFILE
GRADES CHECKED
S.M. NOTED
STRUCTURE DATA CHECKED
NOTE BOOK NO. 37



EXTENSION TO THE
MUNICIPAL WATERWORKS
RIDGELAND, MISS.

PLAN & PROFILE

DESIGNED BY
J. F.
CHECKED BY
K.O.S.
DATE
REVISIONS

KOHLER & REYNOLDS
CONSULTING ENGINEERS
JACKSON, MISS.

MOON ST.
RAILROAD TO U.S. #51



TOM ELGU 334.15
NAIL IN L.P. N/W COR.
WHEATLEY & COOKSBY

COOKSBY ST.

6" WATER MAIN

16" CONC. DR.

20" CONC. DR.

17" CONC. DR.

20" CONC. DR.

20" CONC. DR.

20" CONC. DR.

20" CONC. DR.

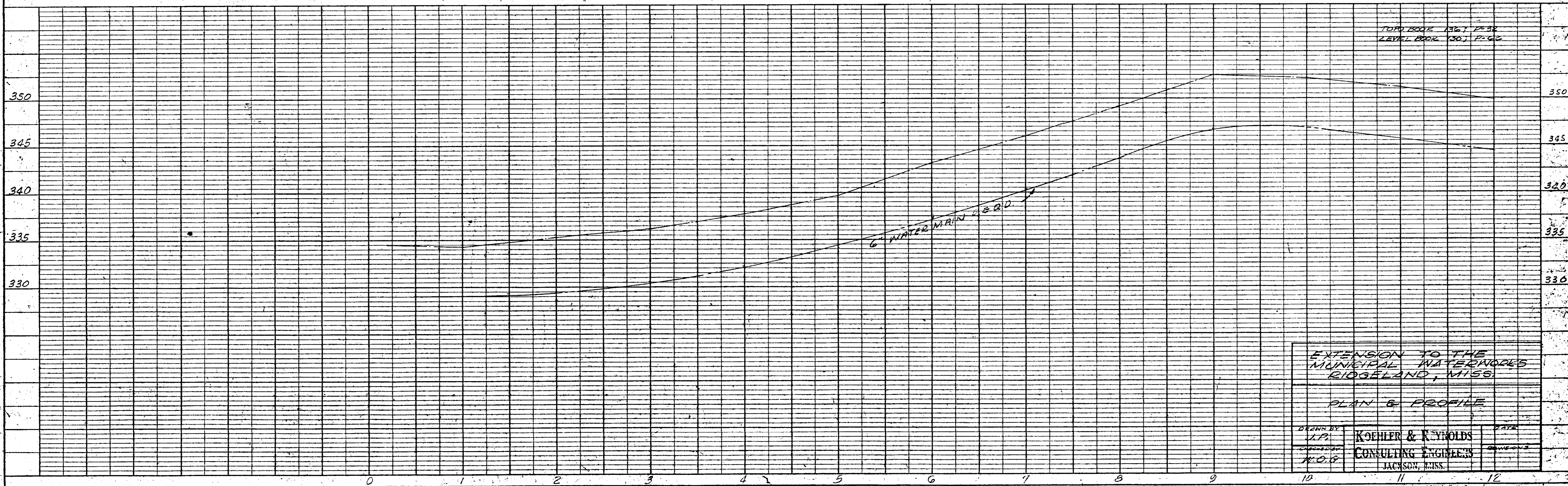
20" CONC. DR.

16" CONC. DR.

PECAN ST.

PLAN	DATE
NUMBER	BY
NOTED	BY
ALIGNED	BY
CHECKED	BY
NO.	DATE

PROFILE	DATE
NUMBER	BY
NOTED	BY
CHECKED	BY
NO.	DATE



EXTENSION TO THE
MUNICIPAL WATERWORKS
RIDGELAND, MISS.

PLAN & PROFILE

DRAWN BY	KOehler & Reynolds	DATE
CHECKED BY	KOehler & Reynolds	DATE
NO. OF SHEETS	JACKSON, MISS.	

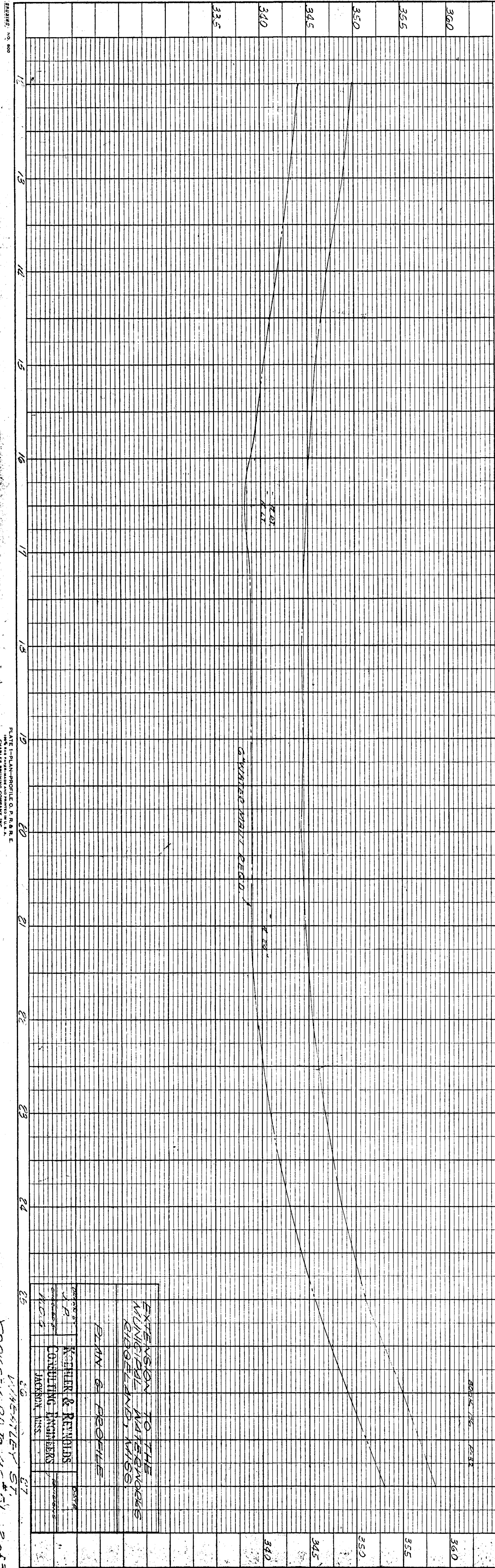
ENGINEERING NO. 800

PLATE 1-PLAN-PROFILE O. P. R. & R. E.
100% RISE PAPER-MADE AND PRINTED IN U. S. A.
CHARLES BEHRING COMPANY, INC.

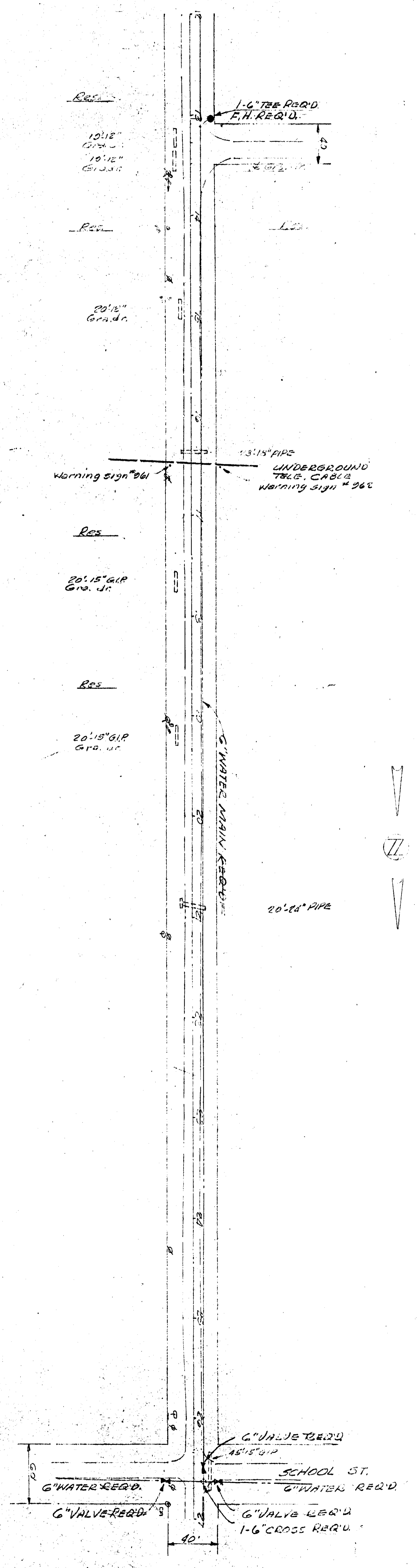
WHEATLEY ST
COOKSBY RD. TO 115th ST. 1st 3.

PROFILE		BY	DATE
SURVEYED			
NOTE BOOK			
PLOTTED			
GRADES CHECKED			
S. M. NOTED			
STRUCTURE NOTATIONS CHK'D			

PLAN		BY	DATE
SURVEYED			
NOTE BOOK			
PLOTTED			
ALIGNMENT CHECKED			
RT. OF WAY CHECKED			



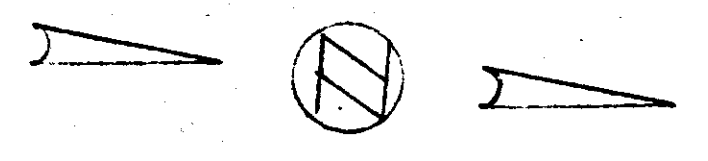
TBM ELEV. 359.81
 NAIL IN L.P. N/SCOL
 WHEATLEY & SCHOOL
 AT CROSSING



EXTENSION TO THE
 MAINLINE WATERWORKS
 RIDGELAND, MISS.
 PLAN & PROFILE
 KOEHLER & REMMERS
 CONSULTING ENGINEERS
 JACKSON, MISS.

PLANNING, DESIGN, CONSTRUCTION & MAINTENANCE
 CHARLES BRUNING COMPANY, INC.
 WHEATLEY ST.
 JACKSON, MISS. 39201

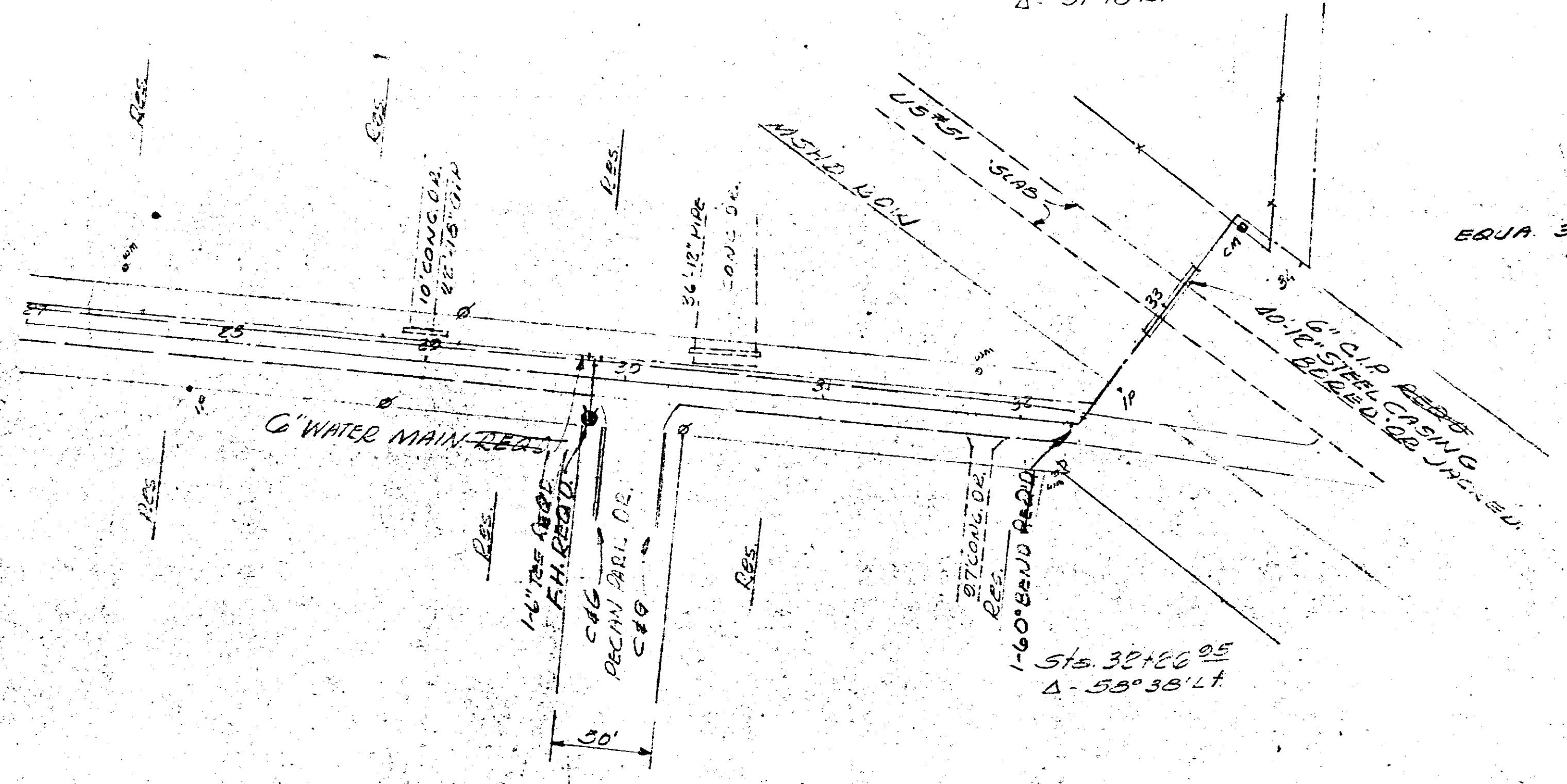
B.M. ELEV. 365.76
CON. MON. W/S US #21
3/END W/RTM32 TRUSS
RT. STA. 33+50.9



Sta. 33+50.9
Δ - 21° 13' RT

EQUA 34+04.2 BACK
2+12.8

Sta. 32+56.05
Δ - 53° 38' LT



PLAN	DATE
SURVEYED	BY
NOTE BOOK	ARRANGED CHECKED
NO.	BY
	DATE

PROFILE	DATE
SURVEYED	BY
NOTE BOOK	GRADES CHECKED
NO.	B.M. NOTED
	STRUCTURE NOTED



TOPO BOOK 126, P. 31
LEVEL BOOK 130, P. 66

EXTENSION TO THE
MUNICIPAL WATERWORKS
RIDGELAND, MISS.

PLAN & PROFILE

DESIGNED BY	J.P.	DATE
CHECKED BY	W.G.G.	PROFITABLE
KOEHLER & REYNOLDS CONSULTING ENGINEERS JACKSON, MISS.		

BRUNING NO. 800 27 28 29 30 31 32 33 34

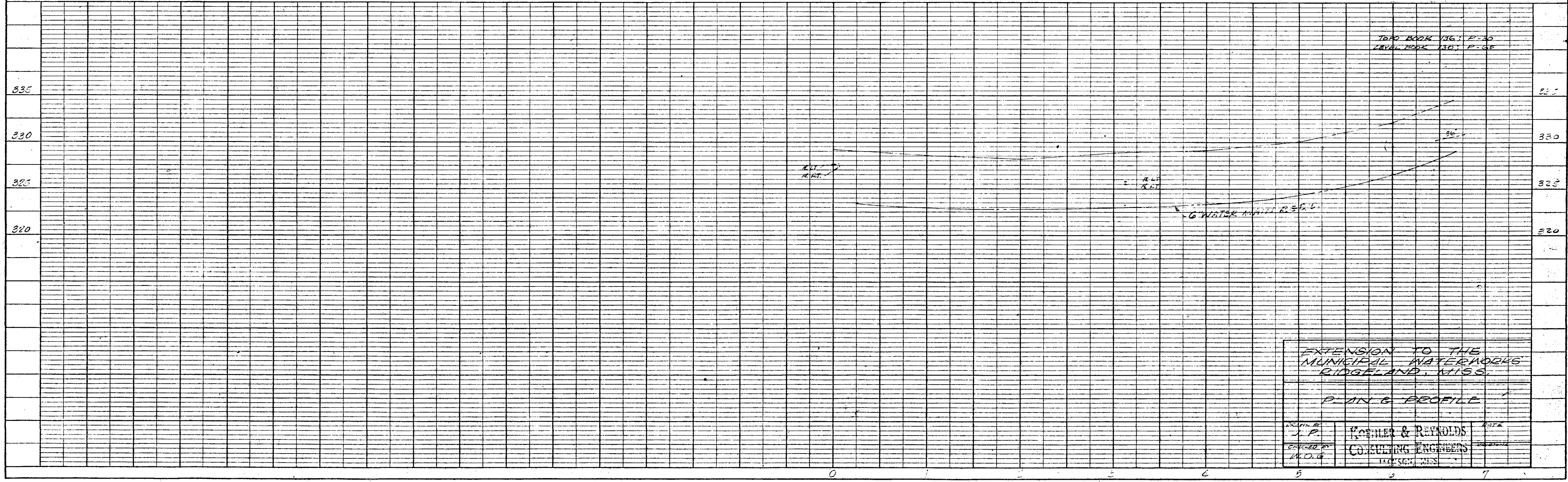
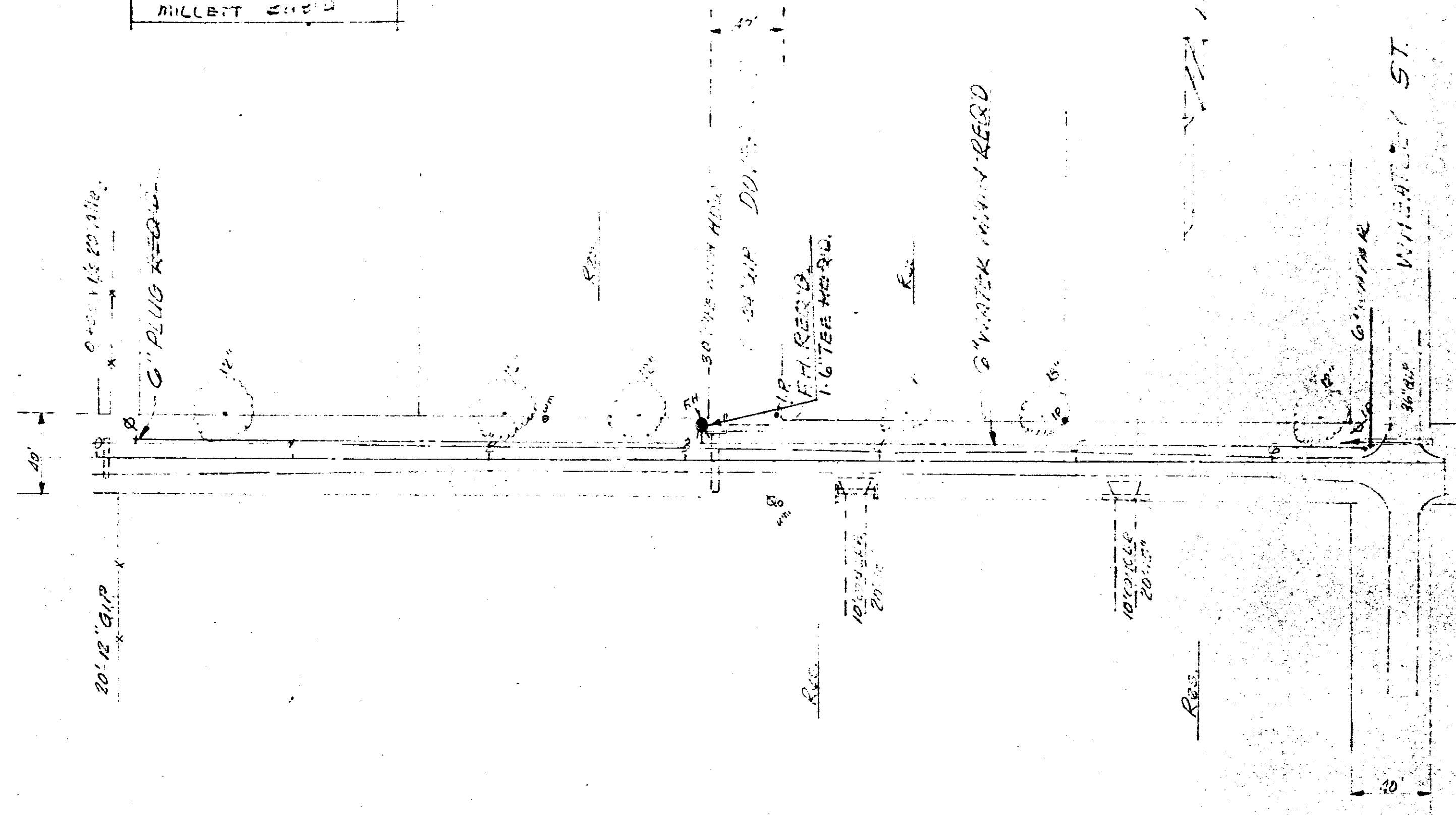
PLATE 1-PLAN-PROFILE O. P. R. & R. E.
100% RECYCLED PAPER-MADE AND PRINTED IN U.S.A.
CHARLES BRUNING COMPANY, INC.

WHEATLEY ST
COOKSEY RD. TO 110.51 301.5

CHIEF ENGINEER 331.81
MILLER ST. SW. CORNER
MILLET ST.

PLAN
SURVEYED
NOTE BOOK ALIGNMENT CHECKED
ET. OF MW CHECKED
NO.

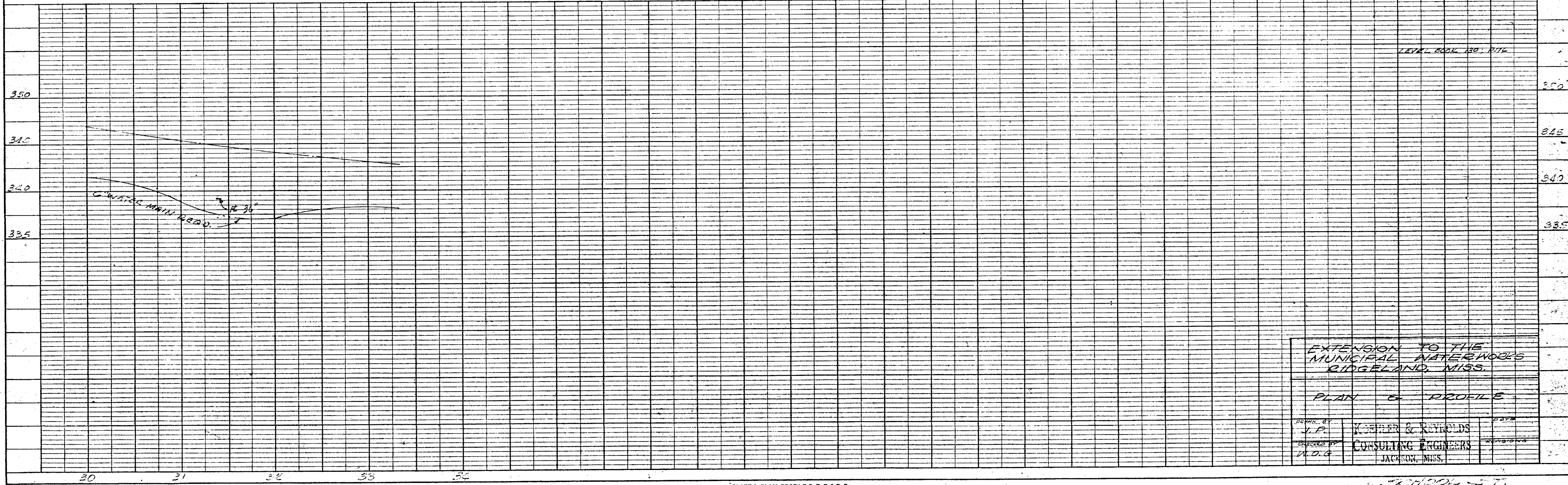
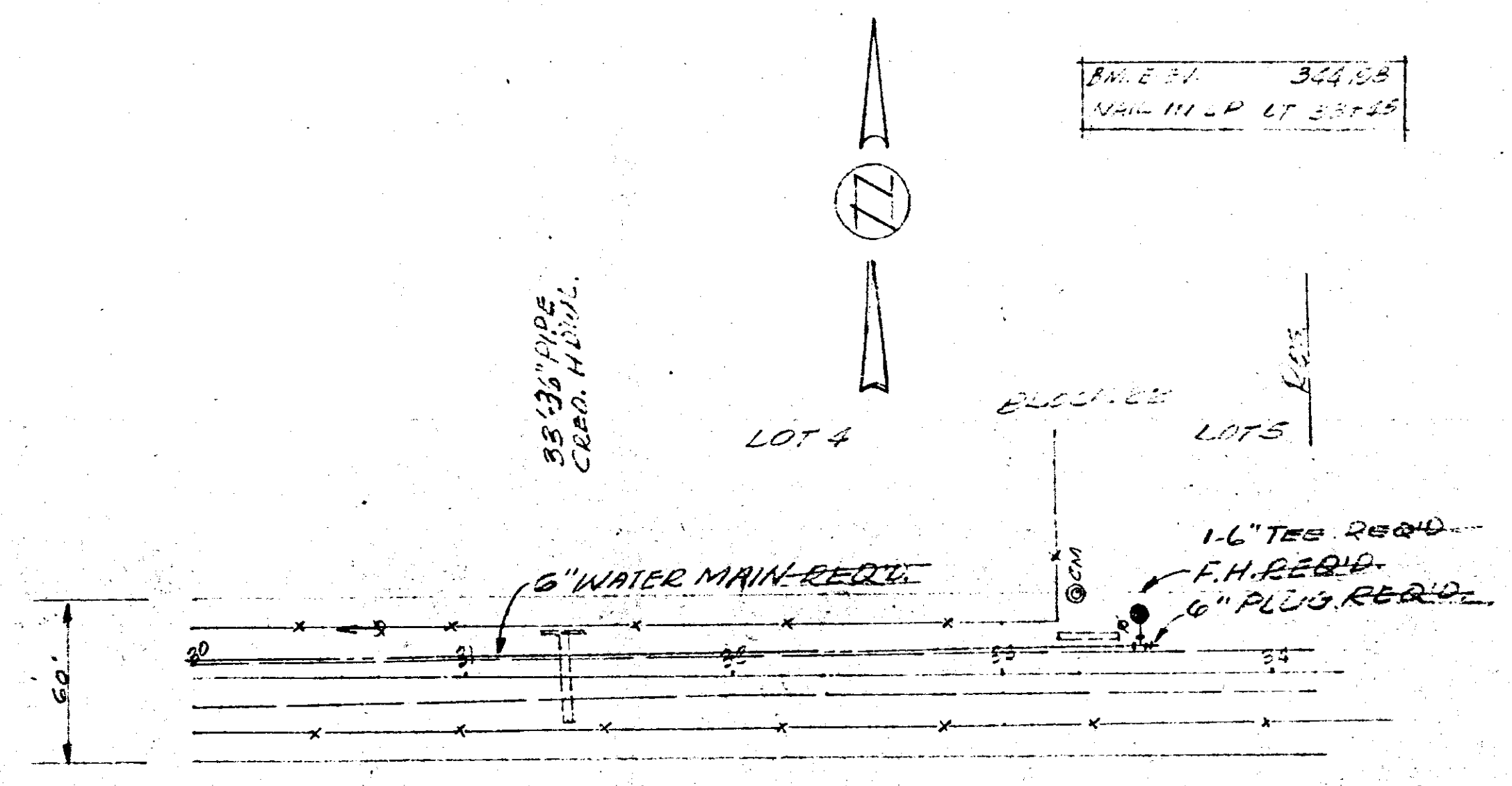
PROFILE
DATE
BY
NOTE BOOK GRADES CHECKED
BY M. NOTER
NO.
STRUCTURE NOTATION CHECKED



DATE: _____
 BY: _____
 SUPERVISOR: _____
 PLANNED: _____
 PLAN NO.: _____
 CHECKED: _____
 DATE: _____

DATE: _____
 BY: _____
 GRADES CHECKED: _____
 PROFILE NO.: _____
 CHECKED: _____
 DATE: _____

PLAN E 21 322,88
 APRIL 11, 1921 LT 33745

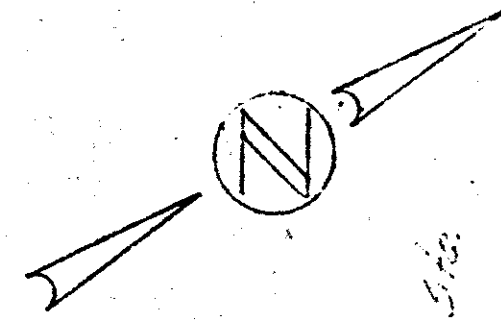


EXTENSION TO THE
 MUNICIPAL WATERWORKS
 RIDGELAND, MISS.

PLAN & PROFILE

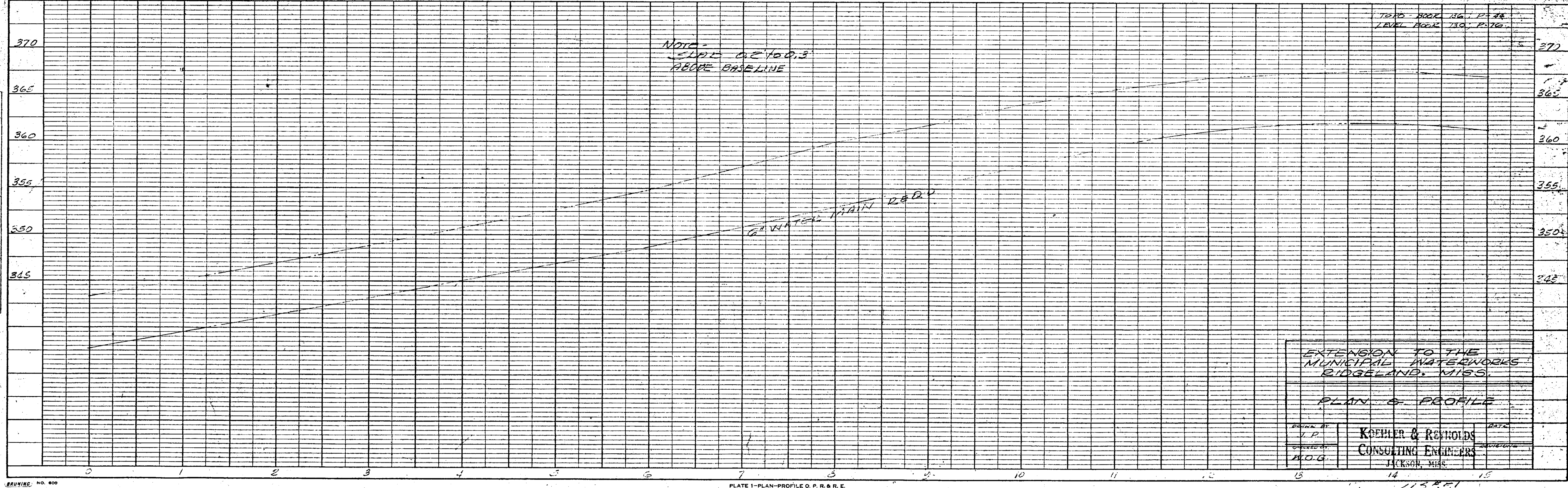
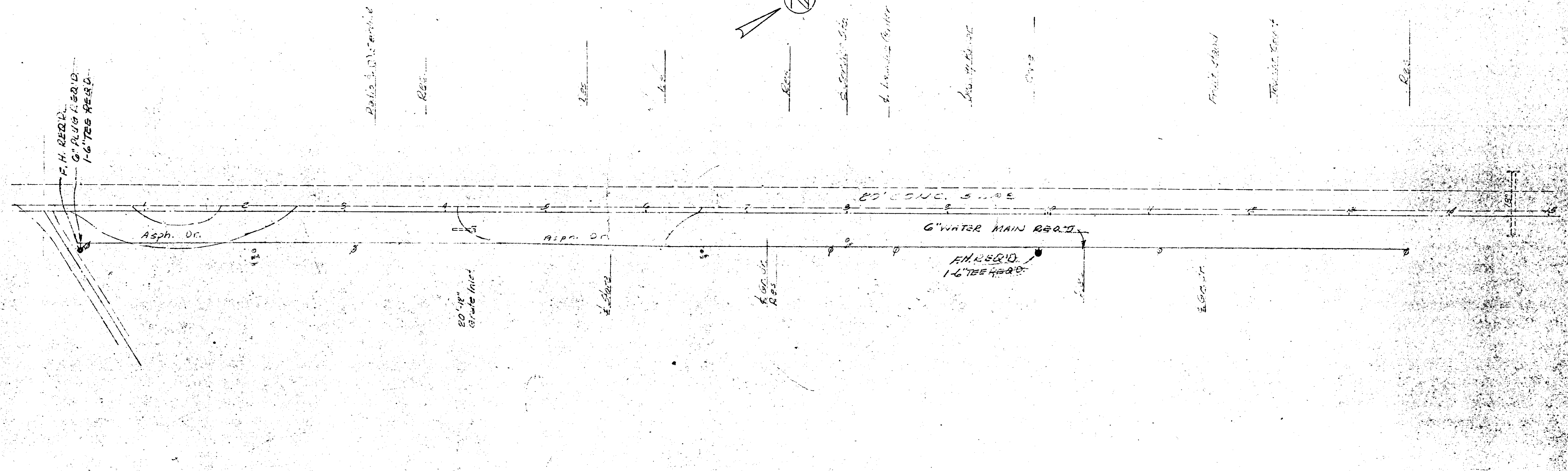
DESIGNED BY: V.P.
 CHECKED BY: W.D.G.
 KOSBIE & REYNOLDS
 CONSULTING ENGINEERS
 JACKSON, MISS.

SCHOOL ST.
 115#51 EAST



DATE	
BY	
SURVEYED	
PLOTTED	
NOTED	
NO.	

DATE	
BY	
SURVEYED	
PLOTTED	
NOTED	
NO.	



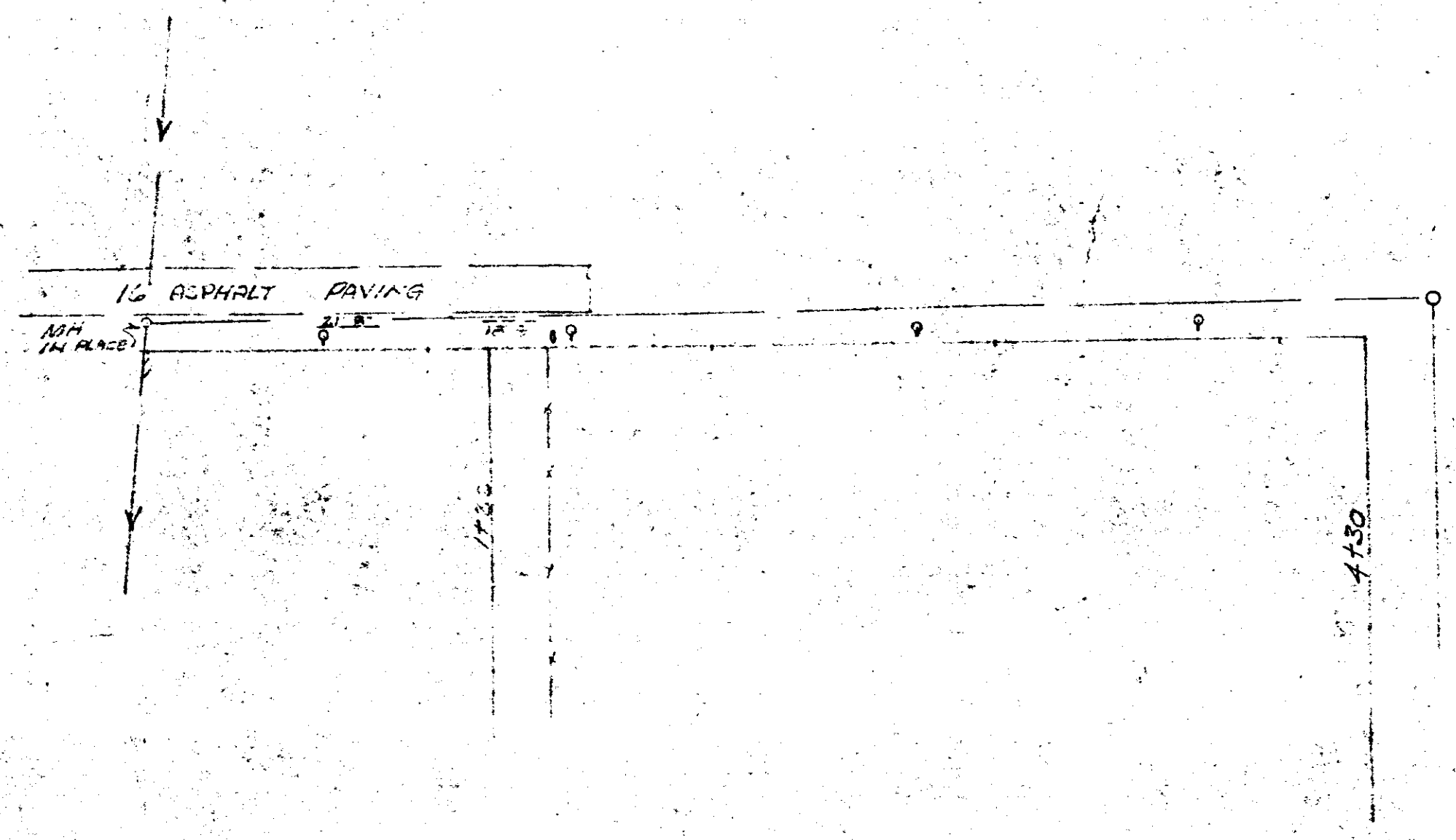
EXTENSION TO THE
MUNICIPAL WATERWORKS
RIDGELAND, MISS.

PLAN & PROFILE

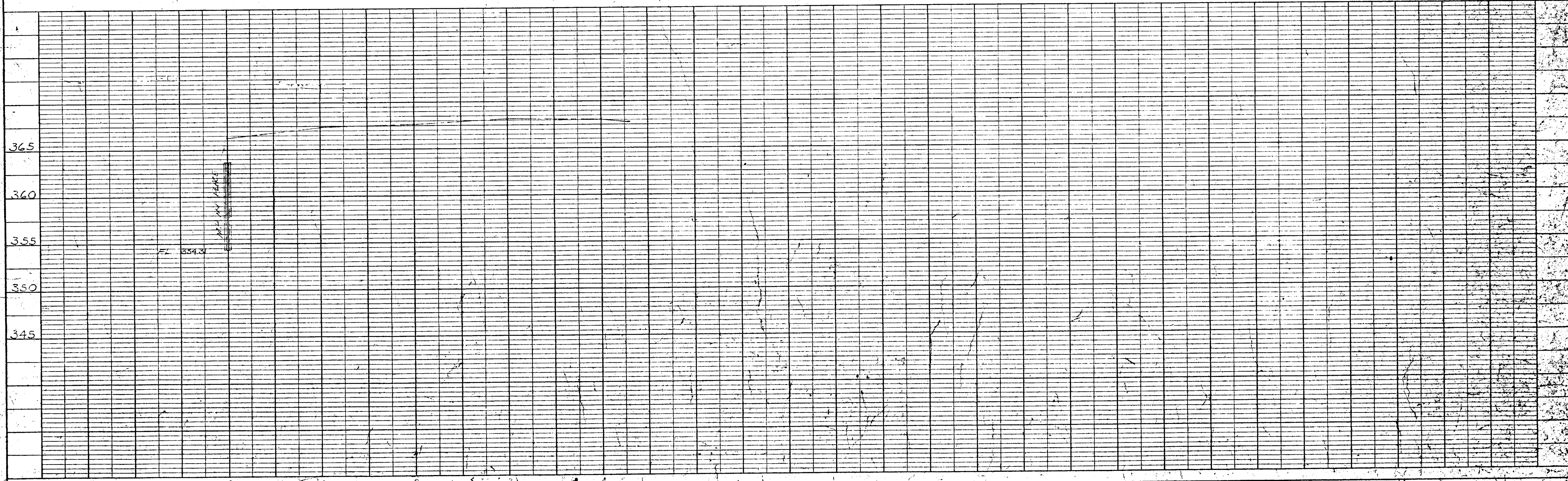
DESIGNED BY	V.P.	CHECKED BY	
DRAWN BY		DATE	
KOEHLER & REYNOLDS		CONSULTING ENGINEERS	
JACKSON, MISS.			

43851
SOUTH DE SCHOOL ST.

DATE: _____ BY: _____
 CHECKED: _____
 PLAN: _____
 NOTE BOOK ALIGNMENT CHECKED: _____
 NO. OF WAY CHECKED: _____



DATE: _____ BY: _____
 CHECKED: _____
 PROFILE: _____
 NOTE BOOK CHECKED: _____
 NO. OF STRUCTURE NOTATIONS CHECKED: _____



BRUNING 40 600