

TOWN OF RIDGELAND

WATER IMPROVEMENTS

MAYOR AND BOARD OF ALDERMEN

HITE B. WOLCOTT, MAYOR

ROBERT JURGENS, MAYOR PRO TEM

ELMER HART, ALDERMAN

BARBARA J. JOHNSON, ALDERMAN

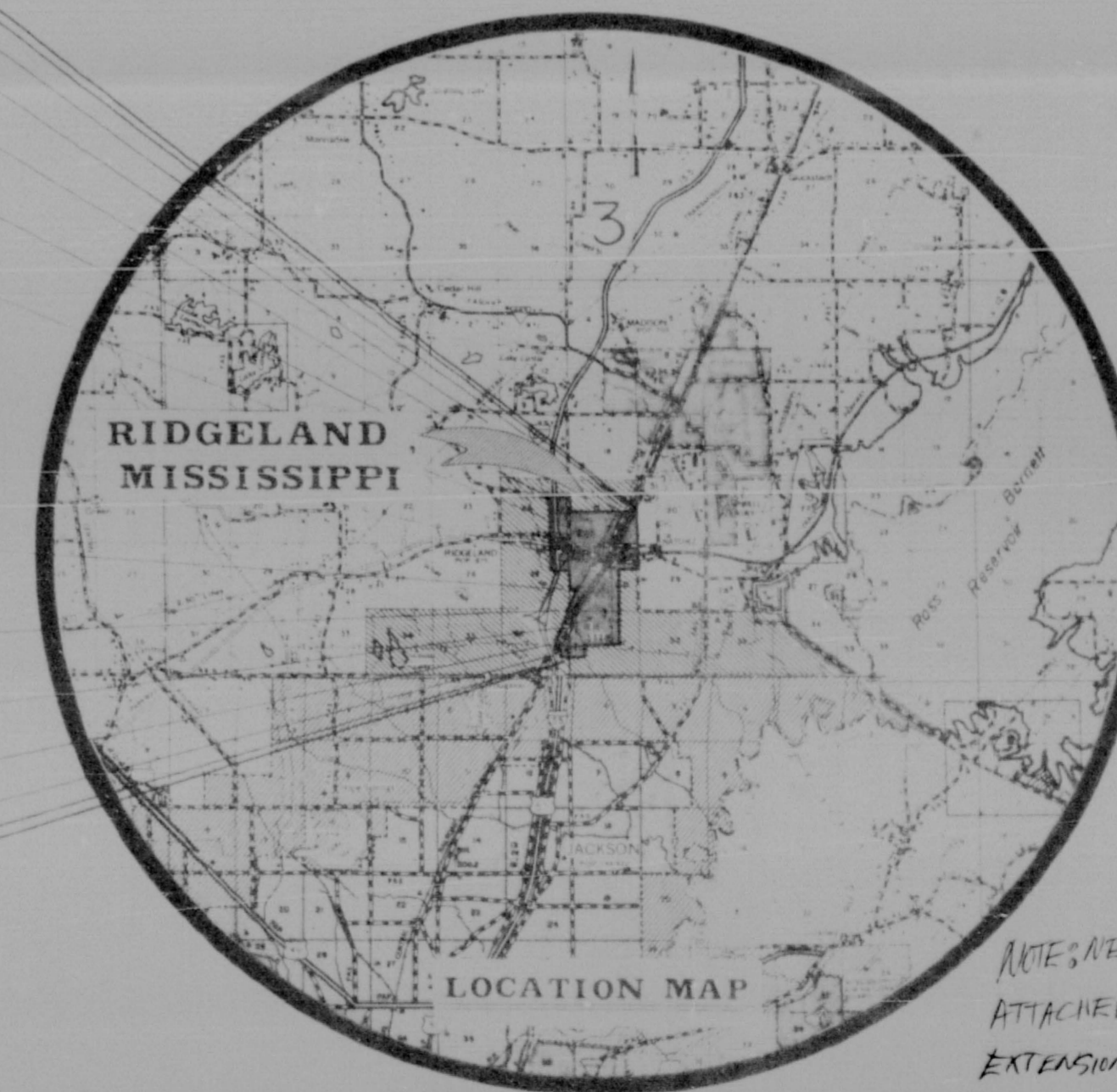
BRIAN KING, ALDERMAN

EDWARD POWELL, ALDERMAN

MARCELLA CANNON, TOWN CLERK

CASE & MONTGOMERY, ATTORNEYS

WILLIAM J. (BILL) GATES,
MAINTENANCE SUPERINTENDENT



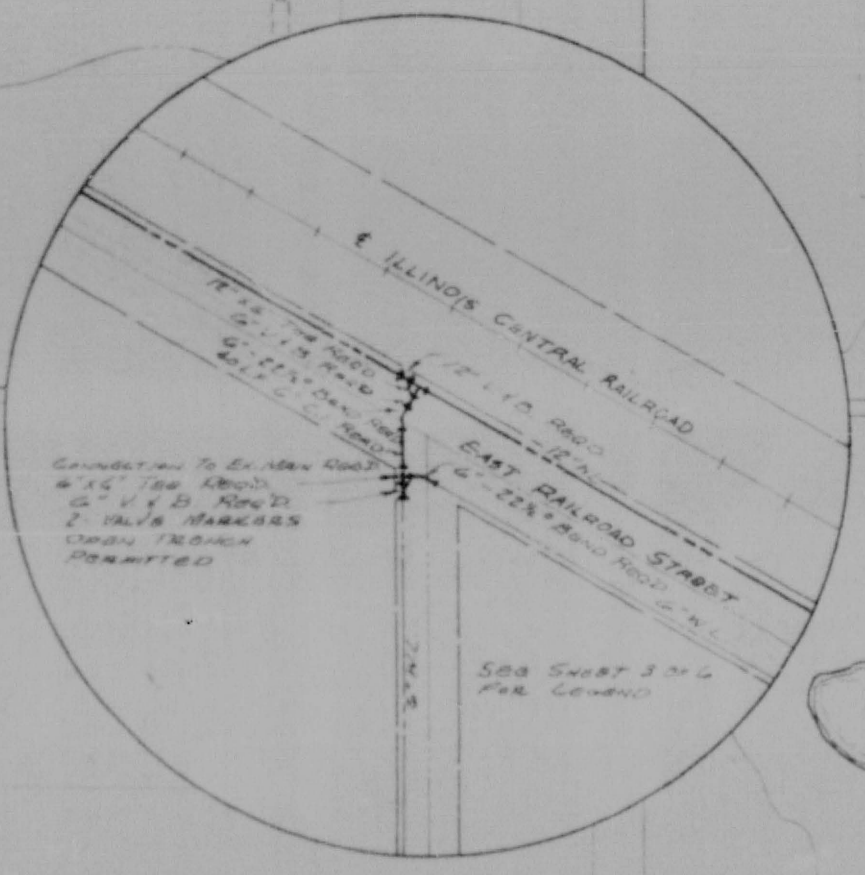
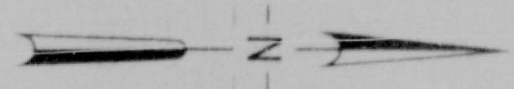
CONTENTS

SHEET	DESCRIPTION
1	COVER SHEET
2	WATER IMPROVEMENTS
3	WATER MAIN CONNECTION INSETS
4	300,000 GALLON WATERSPHEROID
5	FENCING DETAILS
6	CONSTRUCTION DETAILS WATER DISTRIBUTION SYSTEM

APPROVED 1-26-73
AS TO SANITARY DESIGN ONLY
C.M. Donald
Division of Sanitary Engineering
Mississippi State Board of Health, Jackson, Miss.

NOTES: NEW 500 GPM WELL PLANS
ATTACHED AND WATER LINE
EXTENSION SOUTH, 1996

LESTER ENGINEERING CO.
JACKSON, MISS. E 11



INSET 11

LEGEND

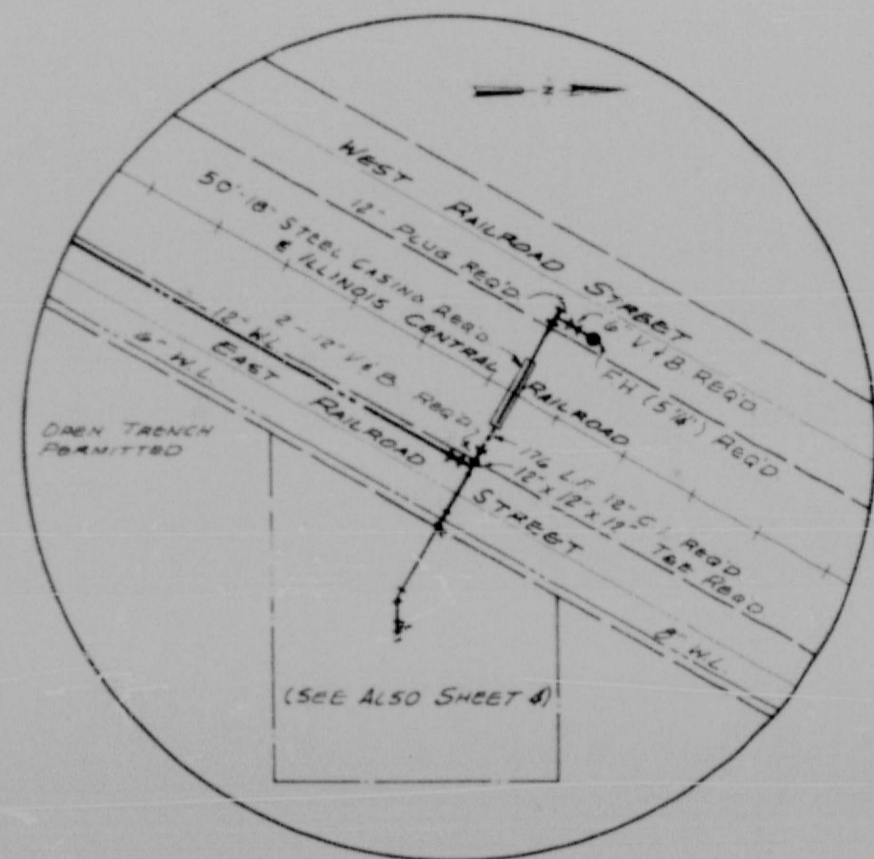
2	EXISTING WATER MAIN, 2" AND UNDER (SIZE INDICATED)
4	EXISTING WATER MAIN, 3" AND 4" (SIZE INDICATED)
6	EXISTING WATER MAIN, 6" (SIZE INDICATED)
8	EXISTING WATER MAIN, 8" (SIZE INDICATED)
---	PROPOSED IMPROVEMENTS

NOTE: SEE SHEET 3 OF 6 FOR INSET ENLARGEMENTS

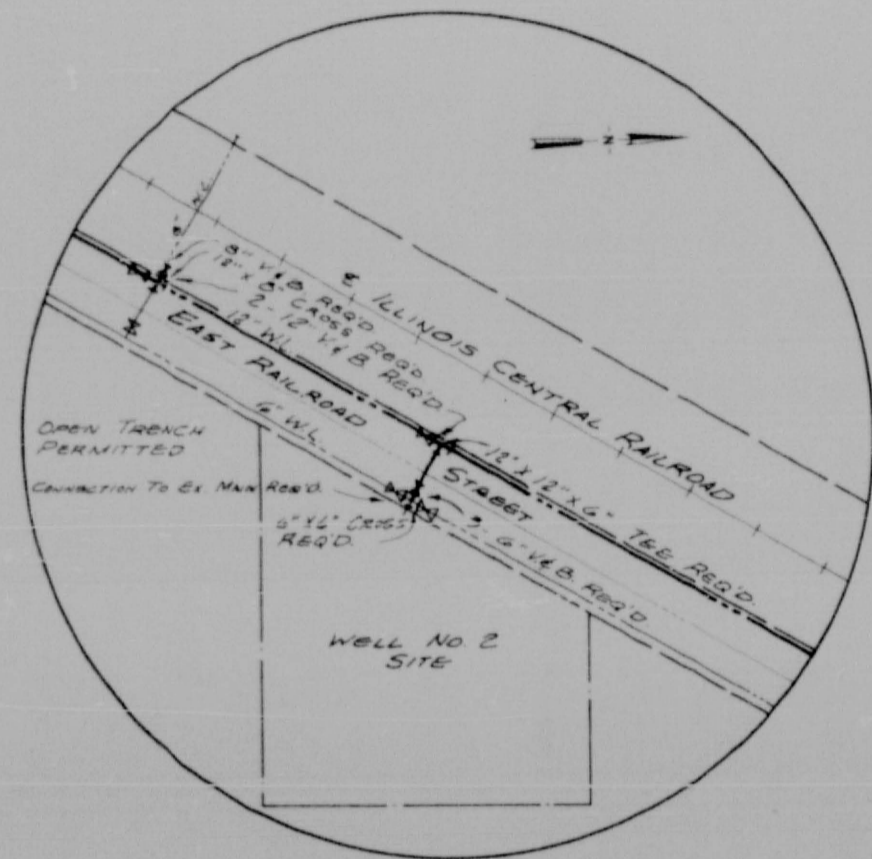
DESIGNED	SCALE 1" = 500'				
DRAWN R.W.F.	DRWG NO. 72-904				
APPROVED					
DATE 12/6/72					
REV NO.	DATE	NATURE OF REVISION	BY	CHKD	APPD
1	1-25-73	ADD INSET 11 CHANGE L.F. PIPES	R.W.F.	J.R.	J.R.

LESTER ENGINEERING COMPANY
 CONSULTING ENGINEERS
 JACKSON, MISSISSIPPI

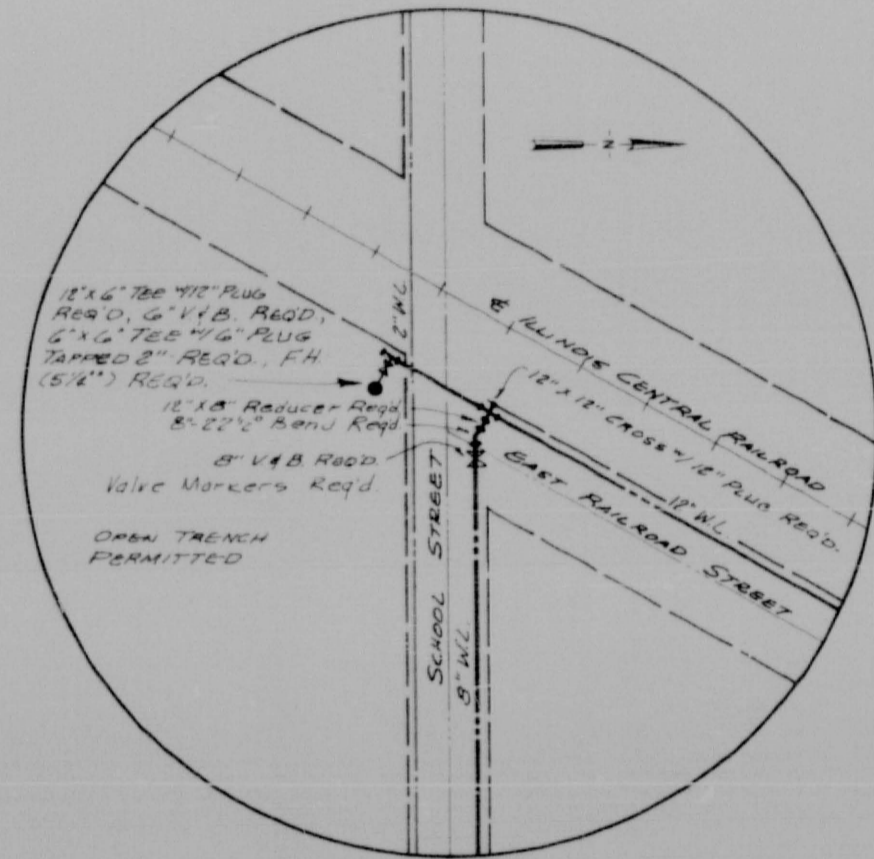
WATER IMPROVEMENTS
 TOWN OF RIDGELAND
 MISSISSIPPI



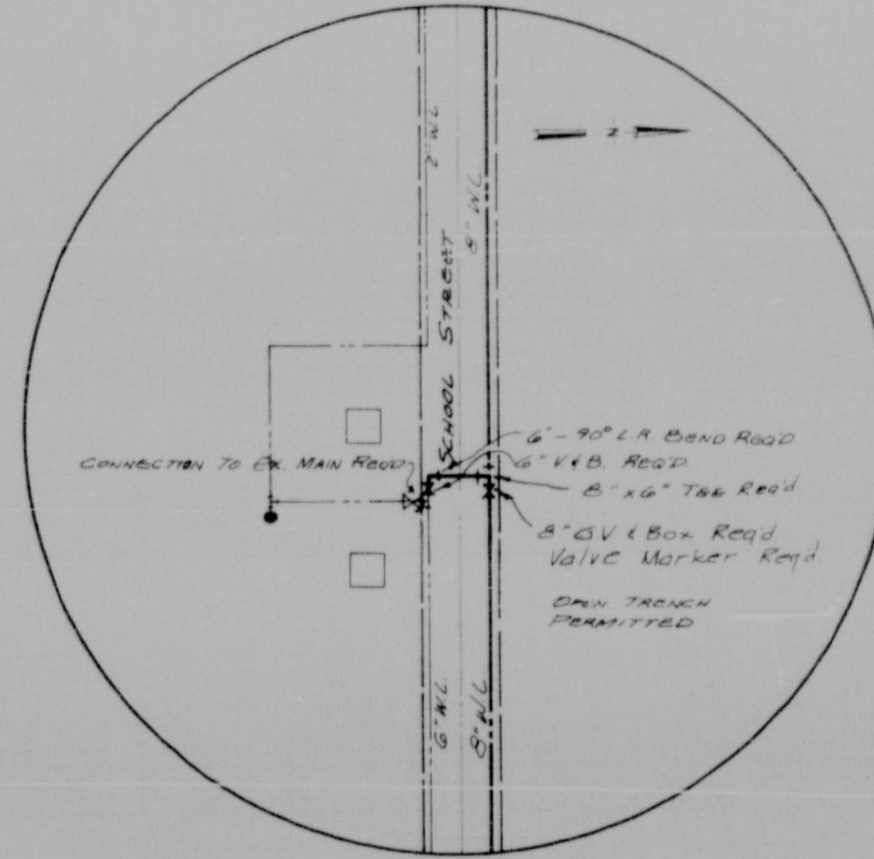
INSET 1



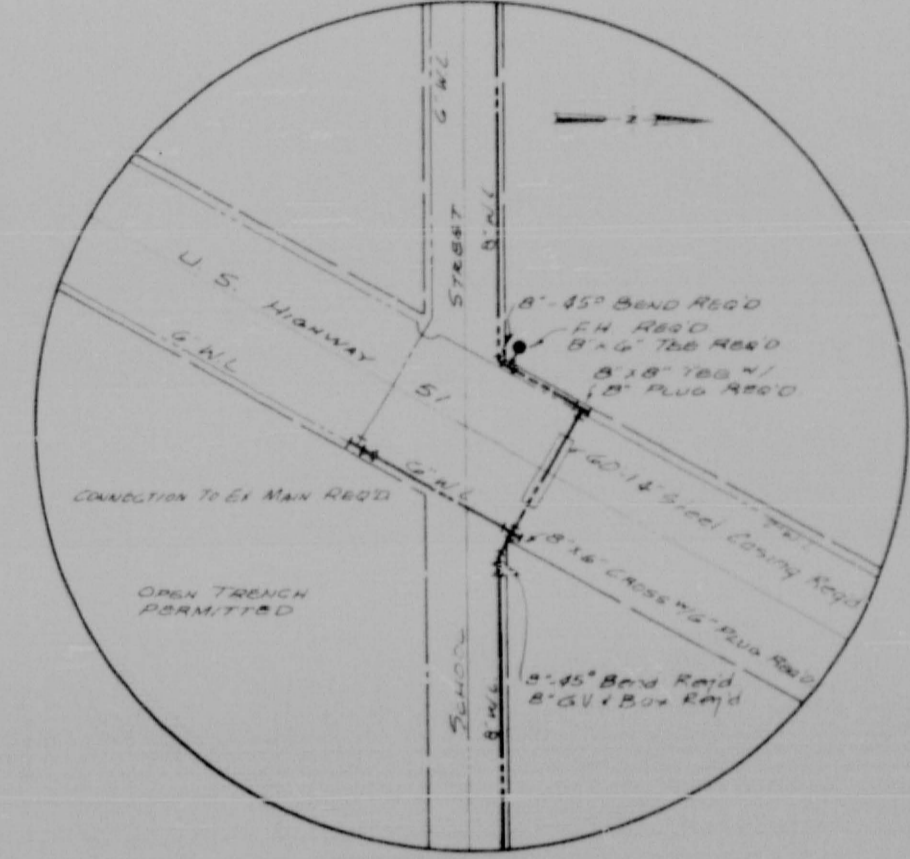
INSET 2



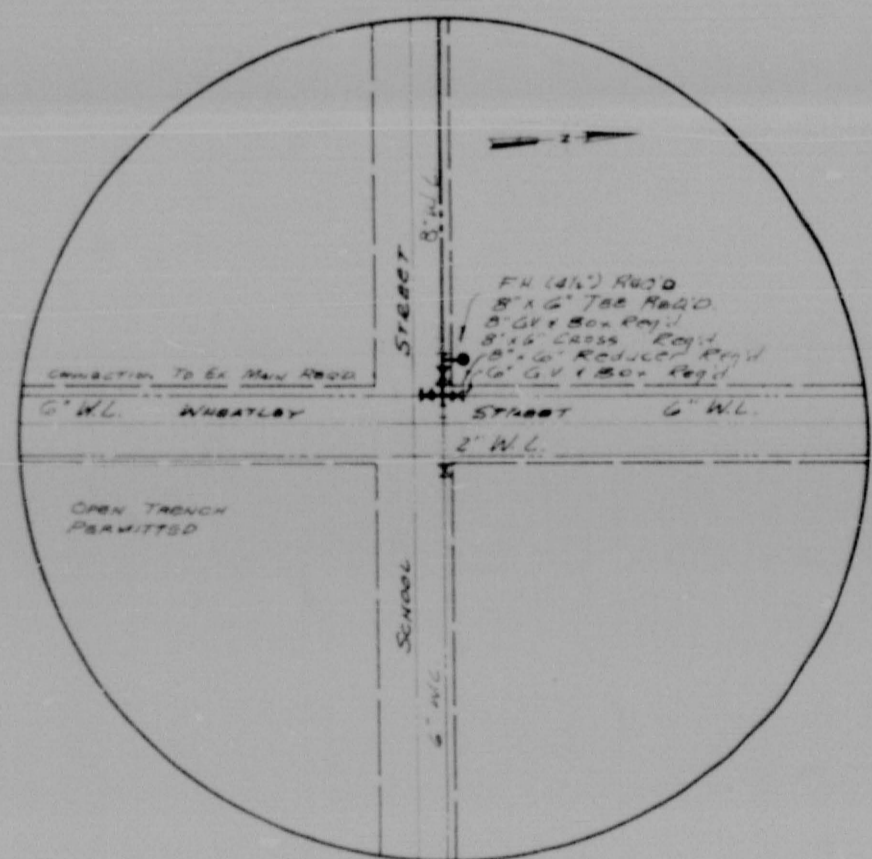
INSET 3



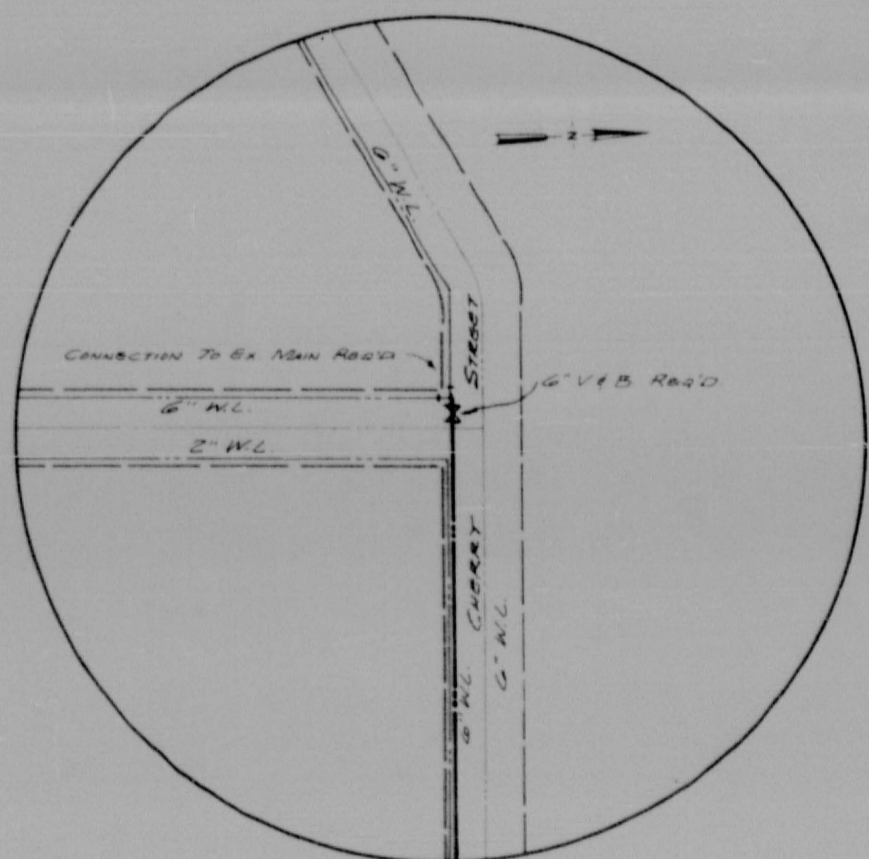
INSET 4



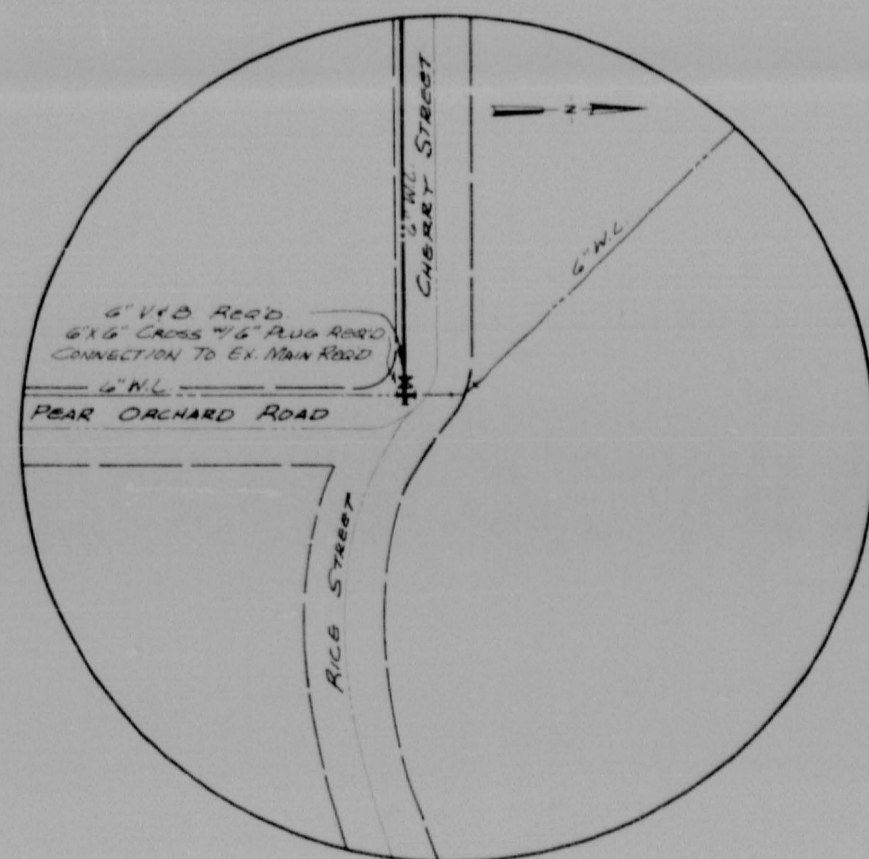
INSET 5



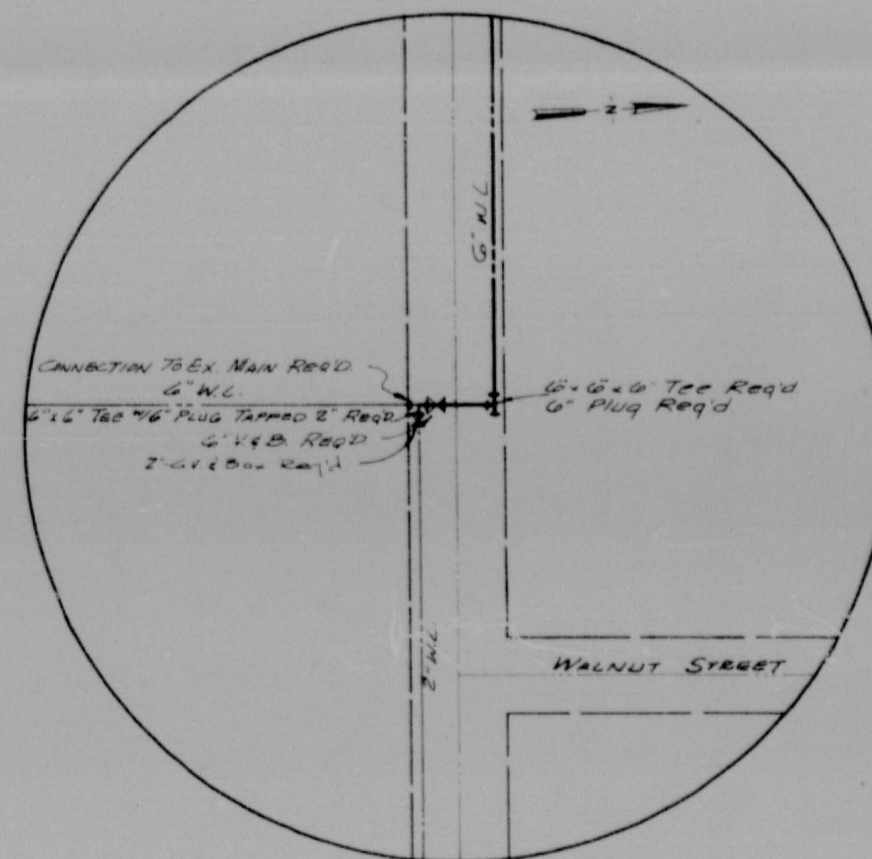
INSET 6



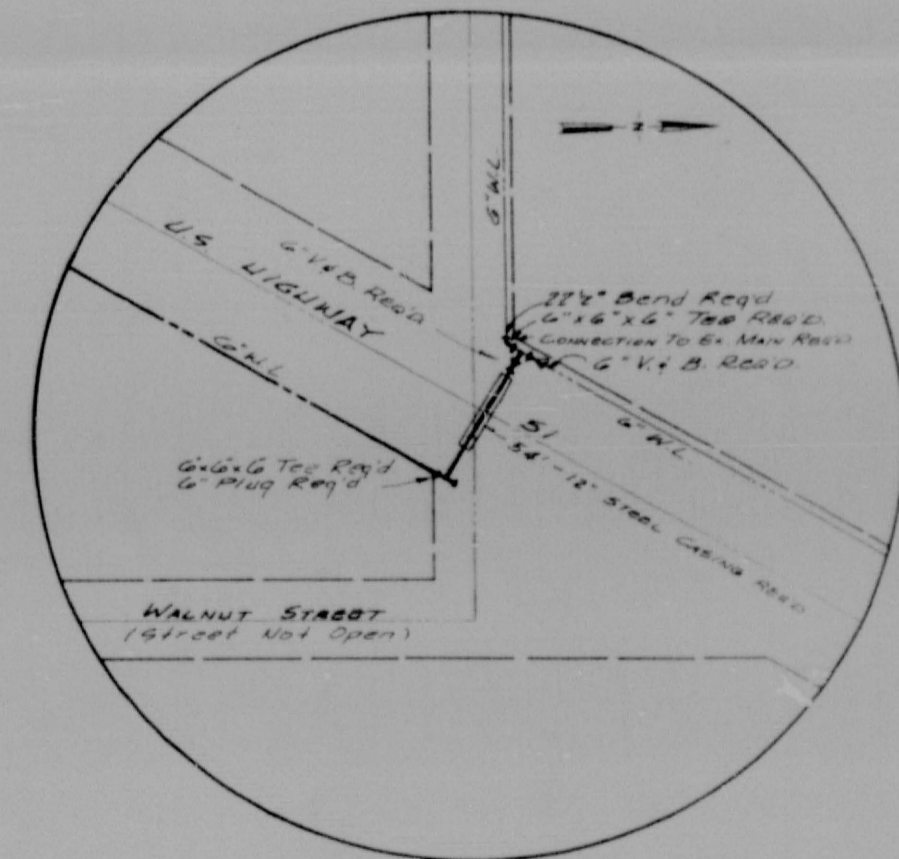
INSET 7



INSET 8



INSET 9

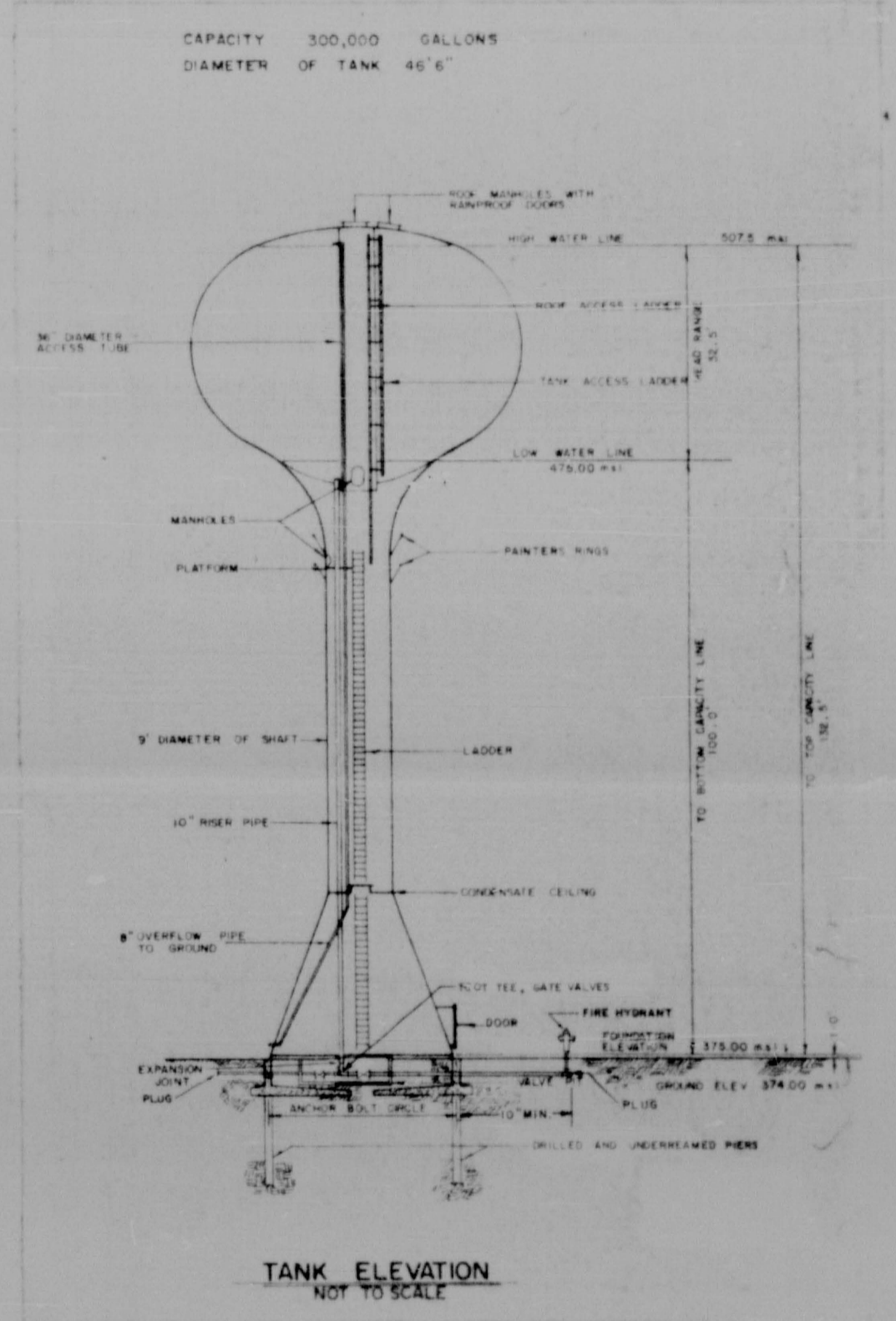
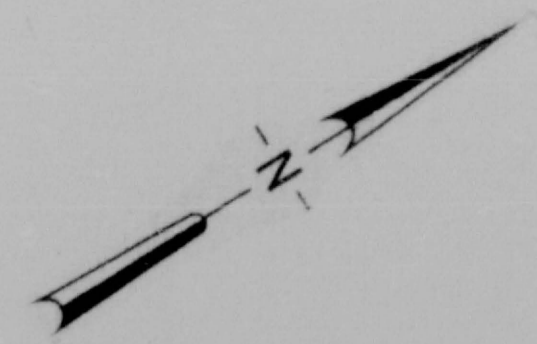
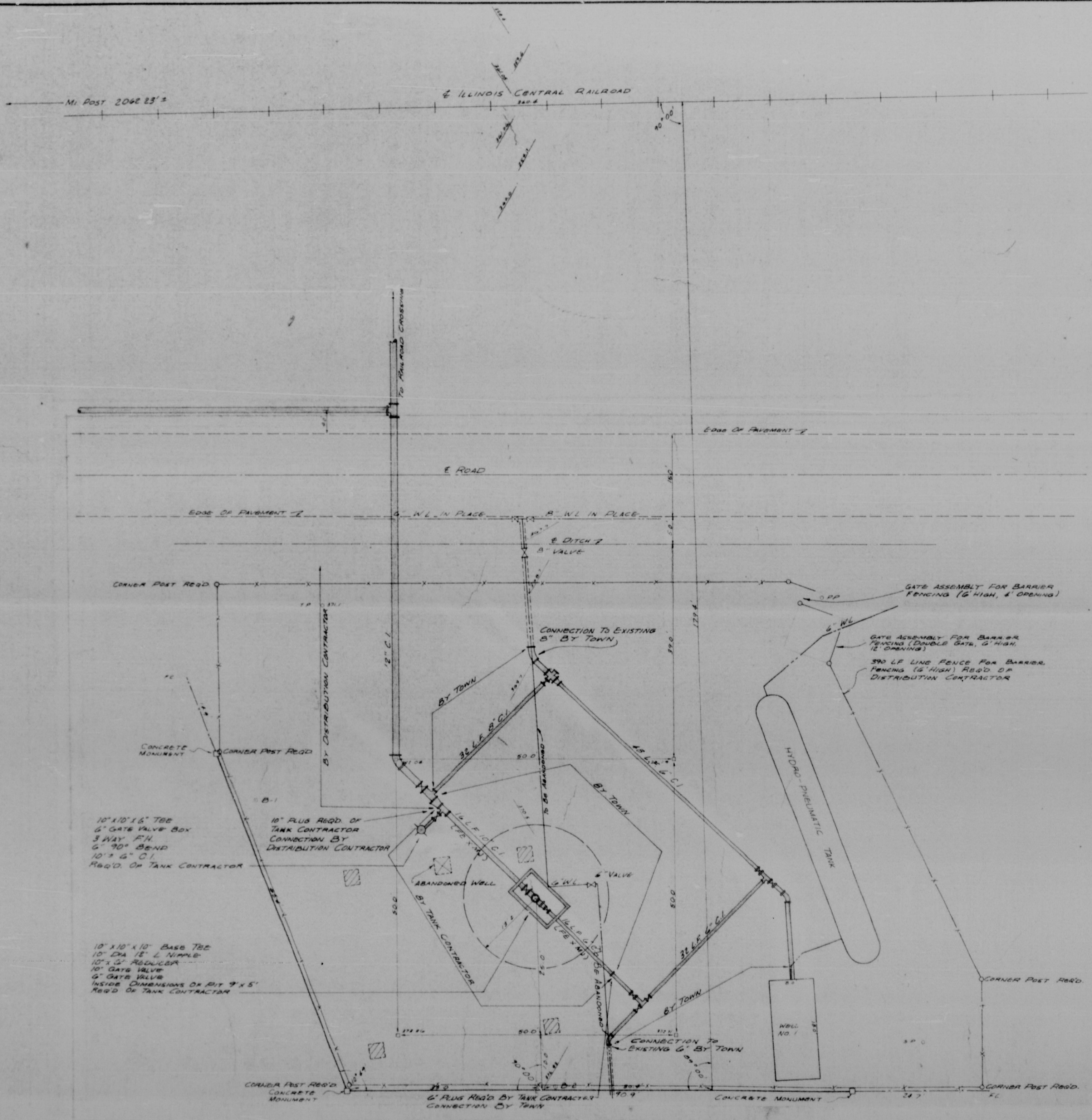


INSET 10

LEGEND:
 EXISTING WATER LINES
 PROPOSED WATER LINES
 GATE VALVE & BOX (SIZE INDICATED)

DESIGNED	SCALE: N.T.S.				
DRAWN: R.W.F.	DRWG. NO. 72-904				
APPROVED: J.K.					
DATE: 12/6/72					
REV. NO.	DATE	NATURE OF REVISION	BY	CHKD.	APPO.
1	12/72	CHANGE INSETS INFORMATION	R.W.F.	J.K.	J.K.

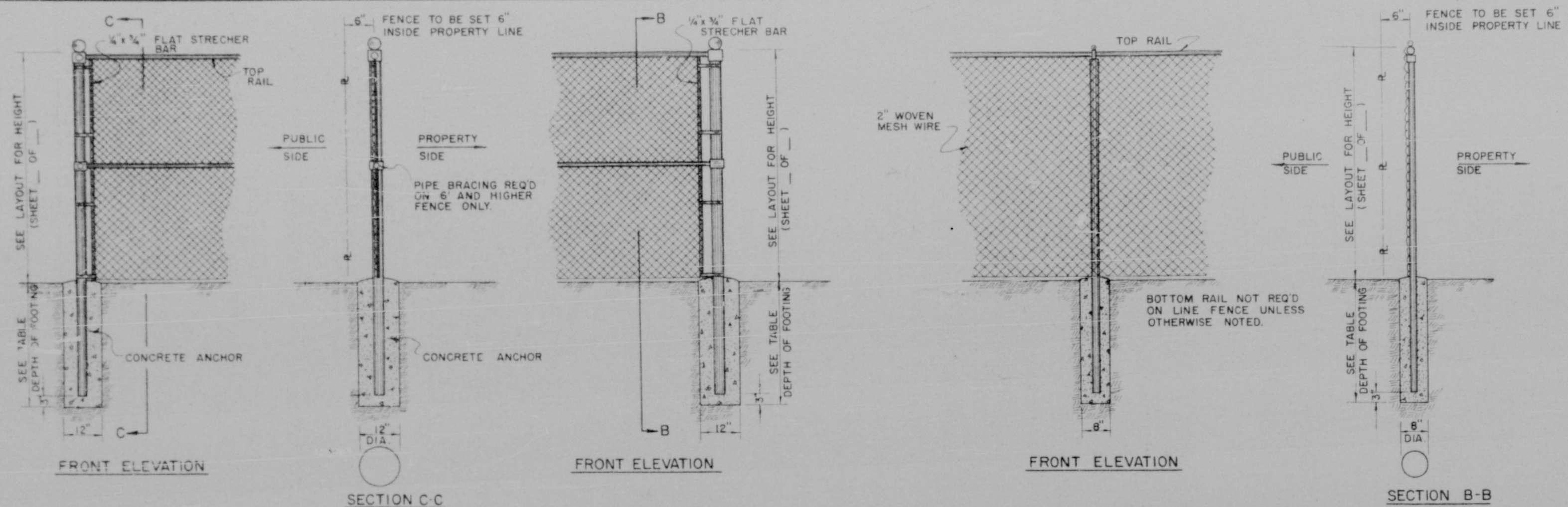
LESTER ENGINEERING COMPANY CONSULTING ENGINEERS JACKSON, MISSISSIPPI	
WATER MAIN CONNECTION INSETS TOWN OF RIDGELAND MISSISSIPPI	SHEET NO. 3 OF 6



- LEGEND**
- LOCATION OF BORINGS
 - ▨ EXISTING CONCRETE FOUNDATION, TO BE REMOVED BY TOWN PRIOR TO TANK CONSTRUCTION
 - WOODEN HUB FOR REPAIRS

E 14

DESIGNED		SCALE 1"=10'		LESTER ENGINEERING COMPANY CONSULTING ENGINEERS JACKSON, MISSISSIPPI		SHEET NO. 4 OF 6
DRAWN RWF		DRWG NO 72-704				
APPROVED J.K.						
DATE 1-11-73				300,000 GALLON WATERSPHEROID TOWN OF RIDGELAND MISSISSIPPI		
REV. NO.	DATE	NATURE OF REVISION	BY	CHKD	APPD	
1	1-18-73	ADDED PLANS TO PLAN	RWF	J.K.	J.K.	



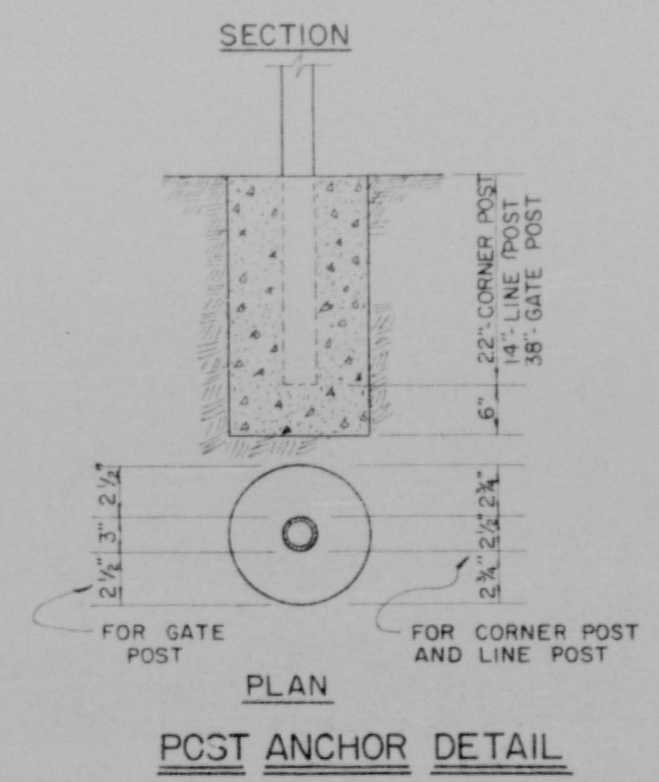
CORNER POST DETAIL

SECTION C-C

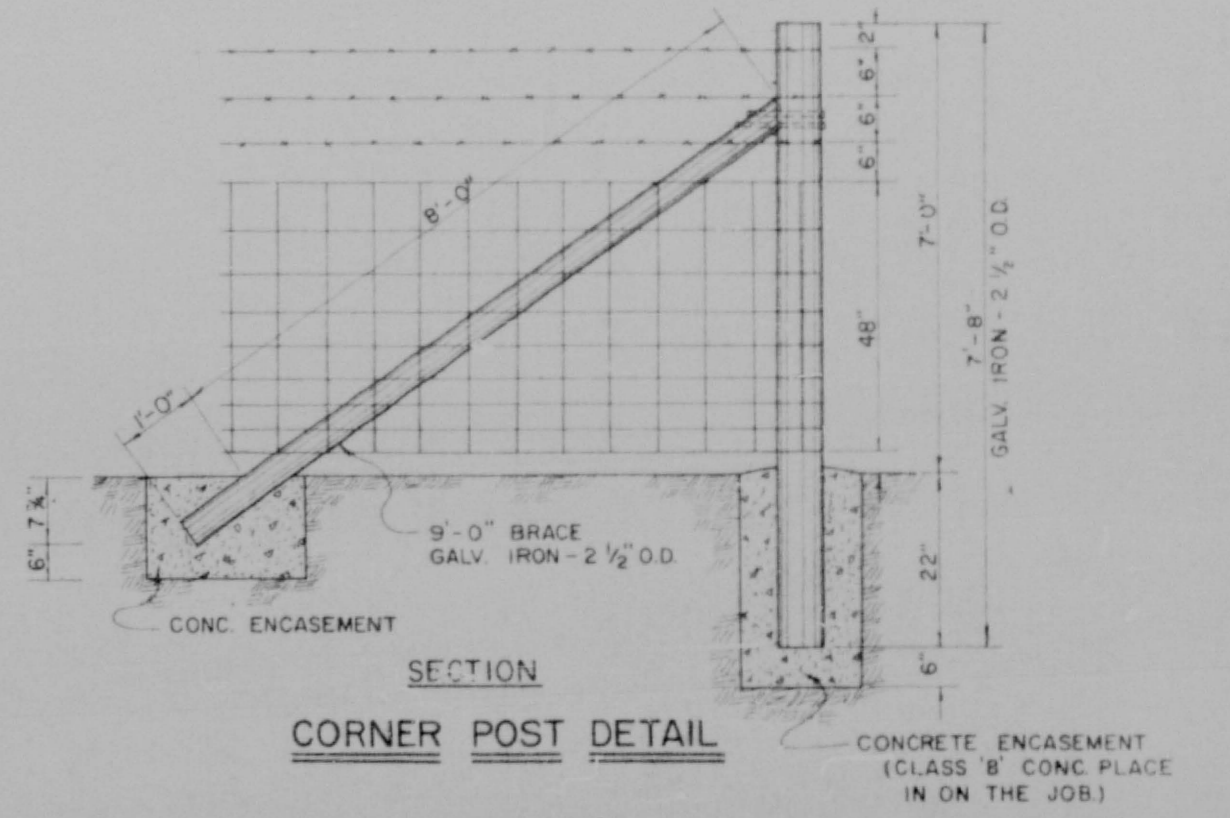
END POST DETAIL

LINE POST DETAIL

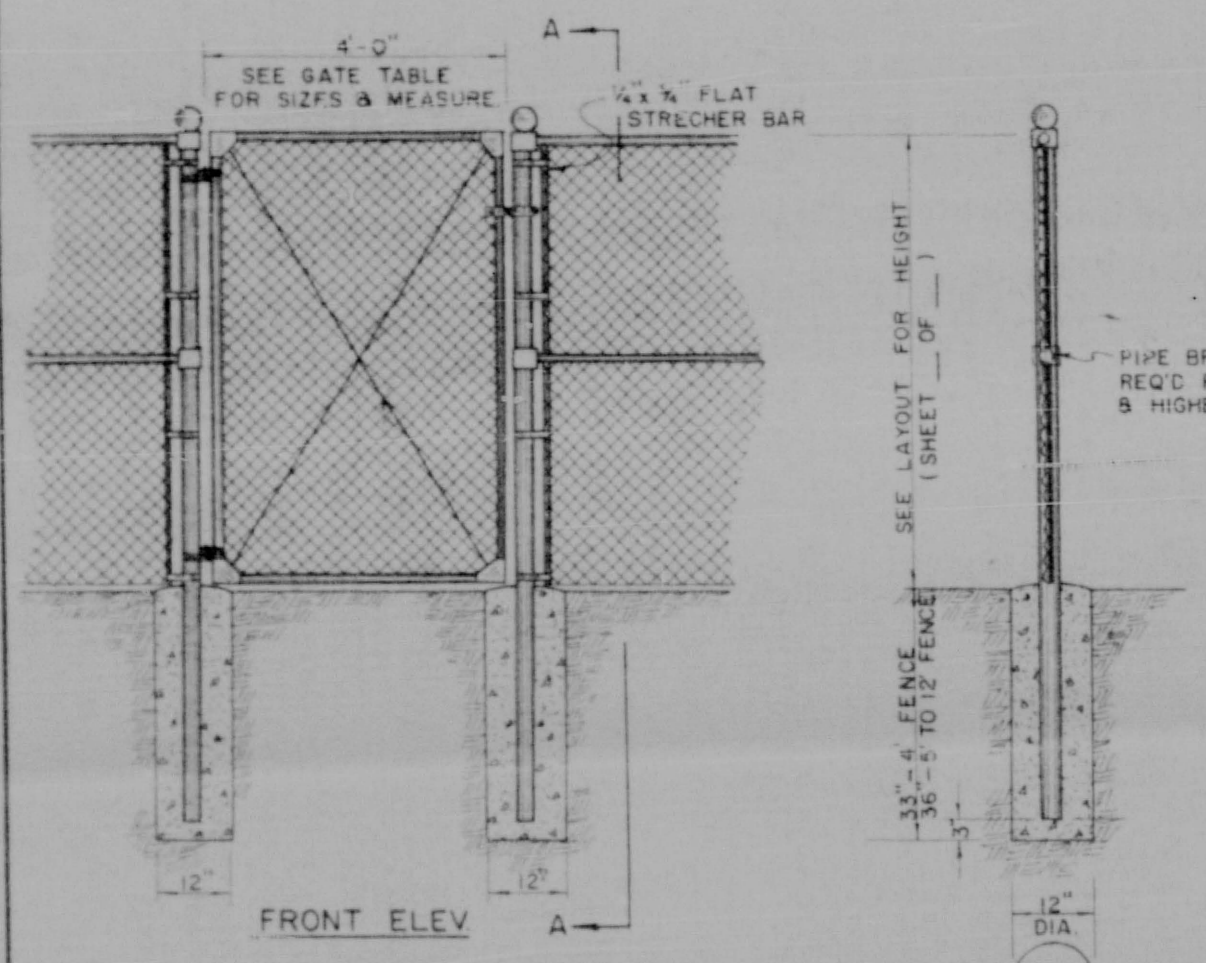
SECTION B-B



POST ANCHOR DETAIL

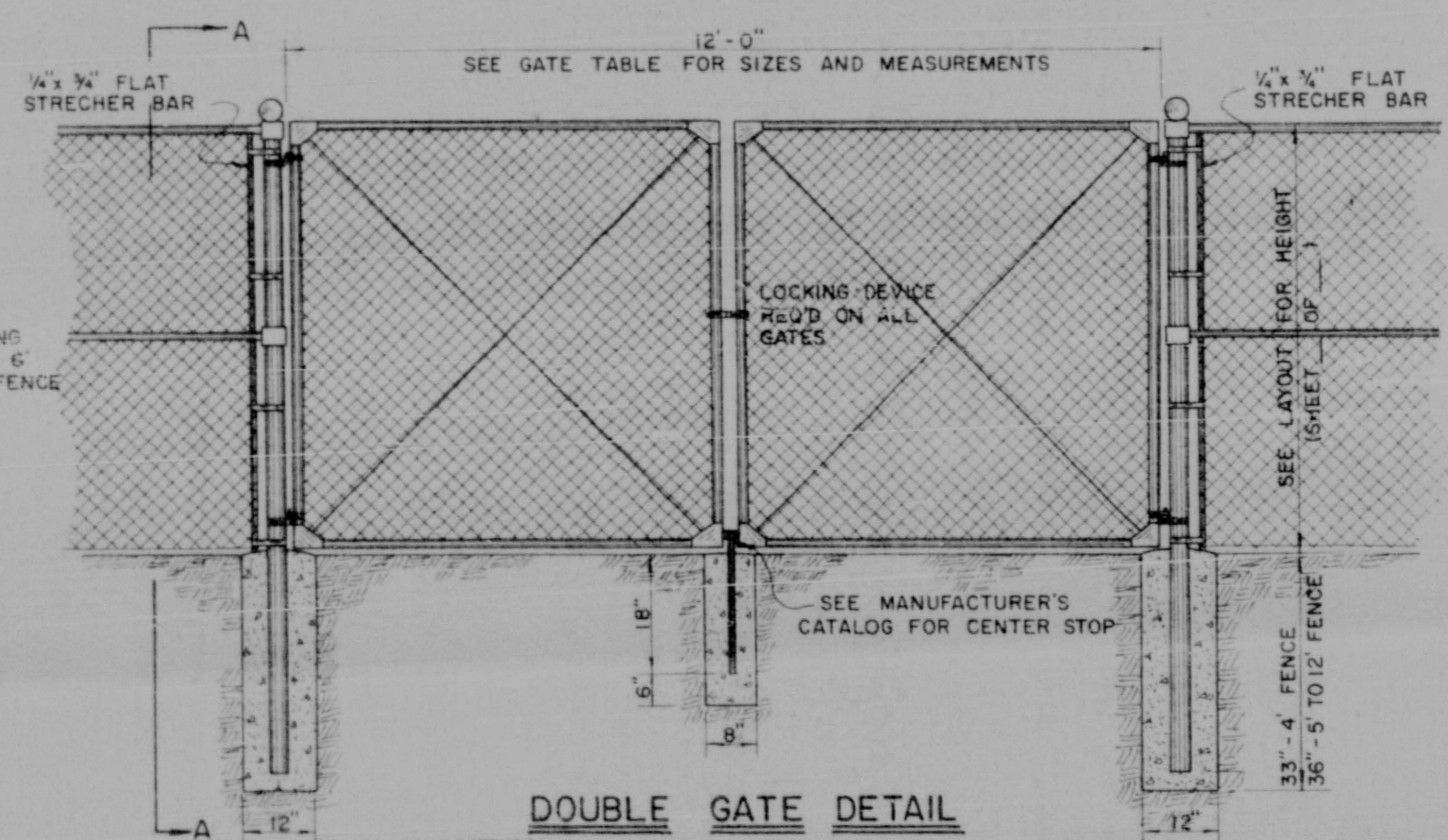


CORNER POST DETAIL

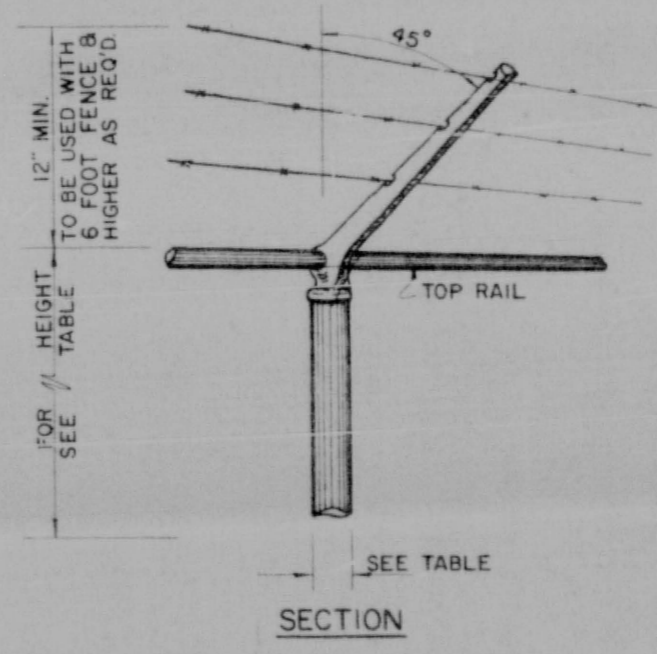


SINGLE GATE DETAIL

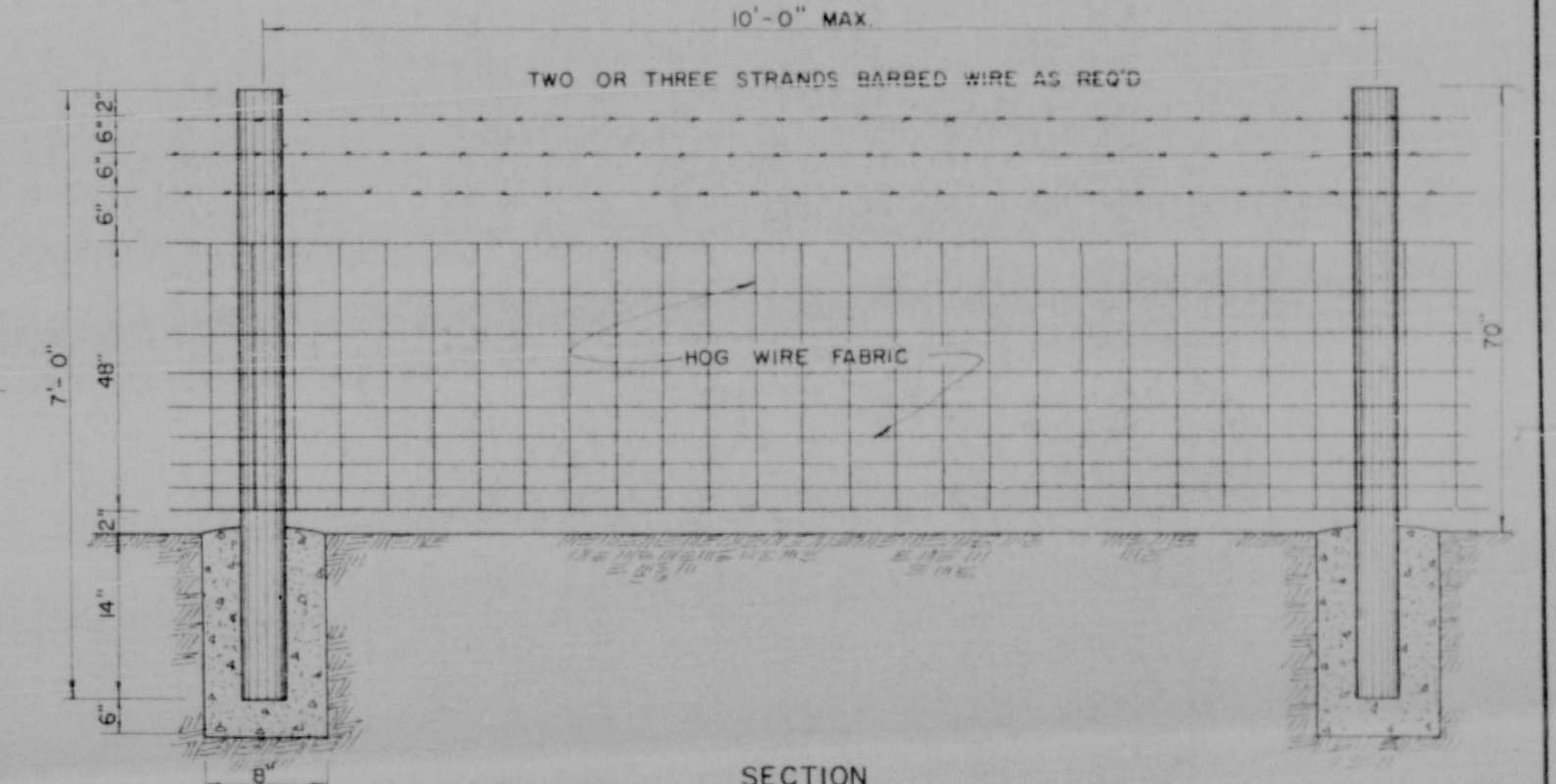
SECTION A-A



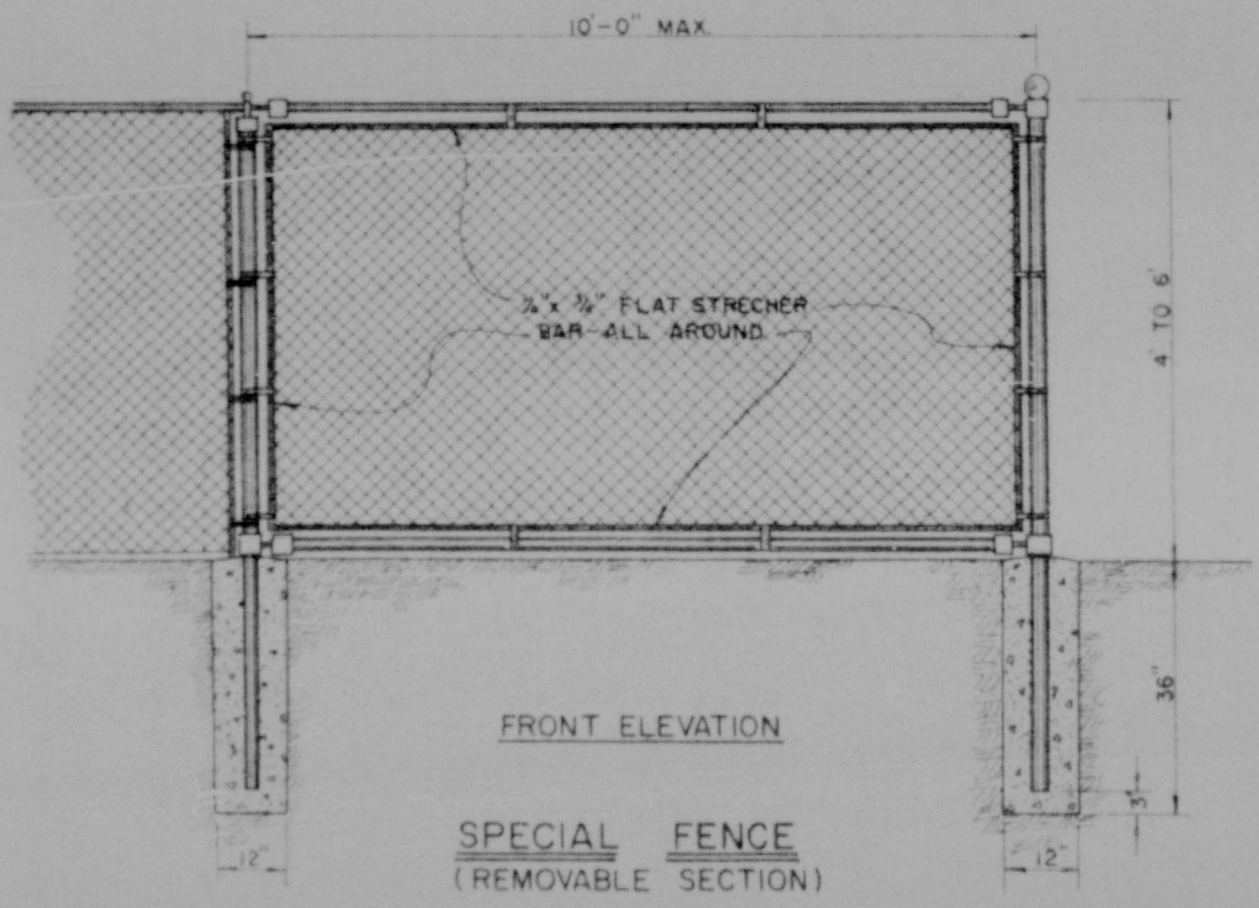
DOUBLE GATE DETAIL



BARBED WIRE ARM DETAIL



LINE POST DETAIL

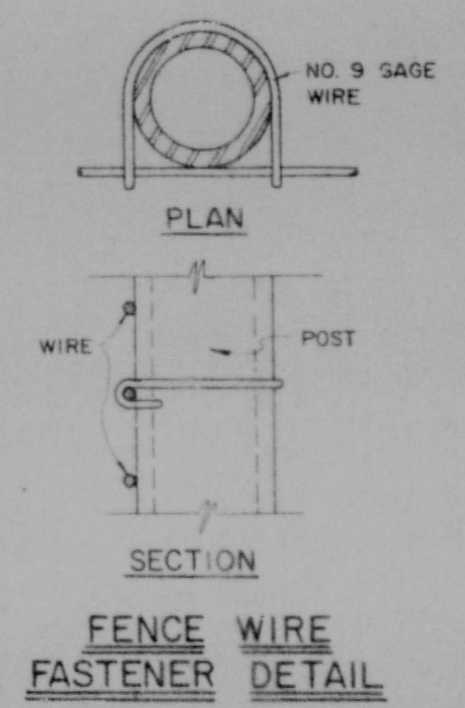


SPECIAL FENCE (REMOVABLE SECTION)

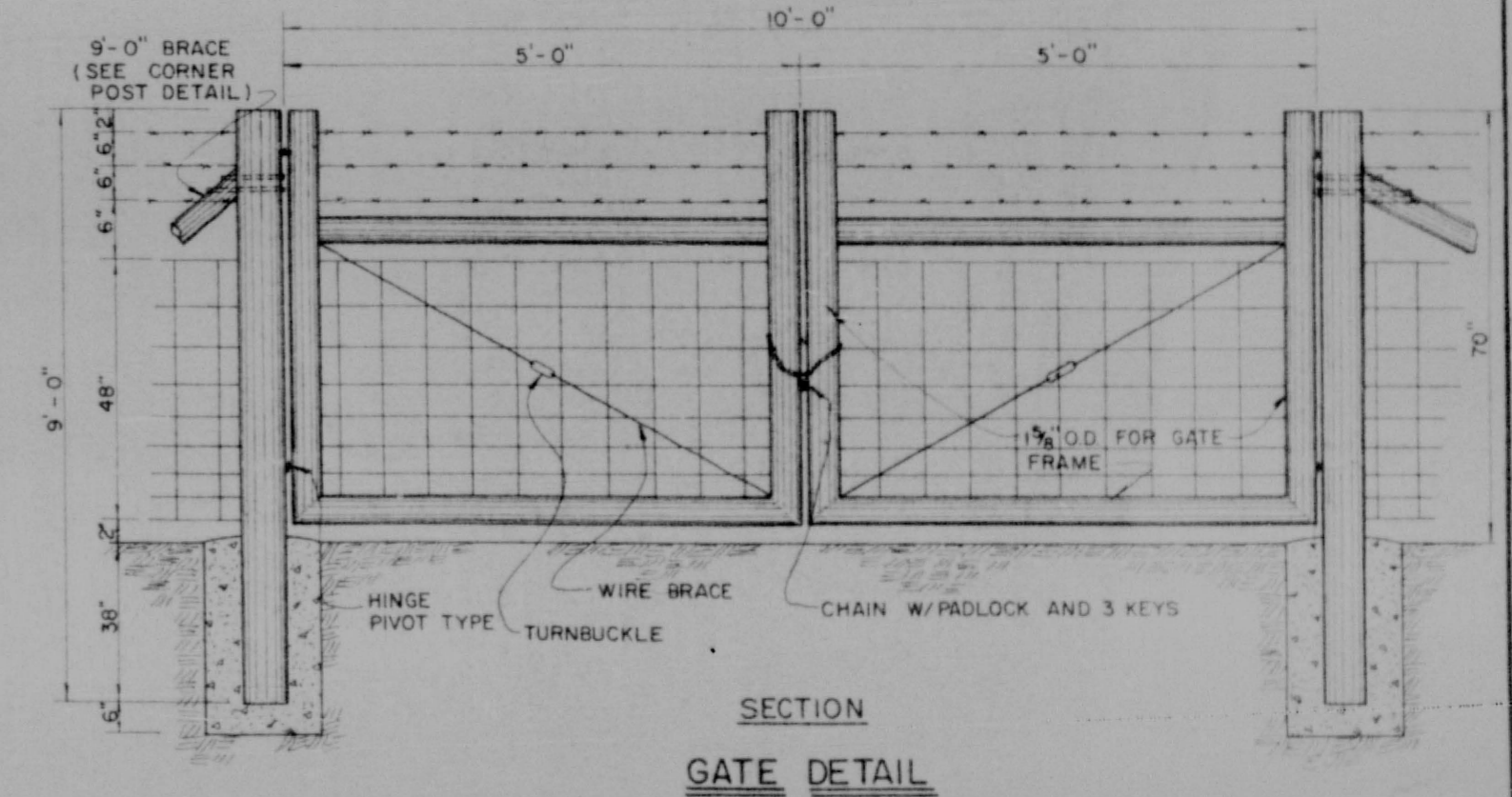
BARRIER FENCING TABLE OF SIZES AND MEASUREMENTS							
HEIGHT OF FENCE	SPECIAL	4 FOOT	5 FOOT	6 FOOT	8 FOOT	12 FOOT	
LINE POST	NONE	2" O.D. @ 2.72 Lbs	2" O.D. @ 2.72 Lbs	2 1/2" O.D. @ 3.65 Lbs	2 1/2" O.D. @ 3.65 Lbs	2 1/2" O.D. @ 3.65 Lbs	
TERMINAL POST DO		2 1/2" O.D. @ 3.65 Lbs	2 1/2" O.D. @ 3.65 Lbs	2 1/2" O.D. @ 3.65 Lbs	3" O.D. @ 5.79 Lbs	3" O.D. @ 5.79 Lbs	
CORNER POST DO		2 1/2" O.D. @ 3.65 Lbs	2 1/2" O.D. @ 3.65 Lbs	2 1/2" O.D. @ 3.65 Lbs	3" O.D. @ 5.79 Lbs	3" O.D. @ 5.79 Lbs	
MAX POST SPACING	10'	10'	10'	10'	10'	10'	
TOP RAIL	1 1/2" O.D. @ 2.27 Lbs	1 1/2" O.D. @ 2.27 Lbs	1 1/2" O.D. @ 2.27 Lbs	1 1/2" O.D. @ 2.27 Lbs	1 1/2" O.D. @ 2.27 Lbs	1 1/2" O.D. @ 2.27 Lbs	
BOTTOM RAIL	1 1/2" O.D. @ 2.27 Lbs	1 1/2" O.D. @ 2.27 Lbs	1 1/2" O.D. @ 2.27 Lbs	1 1/2" O.D. @ 2.27 Lbs	1 1/2" O.D. @ 2.27 Lbs	1 1/2" O.D. @ 2.27 Lbs	
TENSION WIRE	NONE	1 STRAND 7 GA	1 STRAND 7 GA	1 STRAND 7 GA	1 STRAND 7 GA	NONE	
BRACES	NONE	NONE	NONE	1 1/2" O.D. @ 2.27 Lbs	1 1/2" O.D. @ 2.27 Lbs	1 1/2" O.D. @ 2.27 Lbs	
TRUSS RODS	NONE	NONE	NONE	3/8" Ø ROD	3/8" Ø ROD	3/8" W/TURNBUCKLE	
STRETCHER BARS	1/4 x 3/4 FB	1/4 x 3/4 FB	1/4 x 3/4 FB	1/4 x 3/4 FB	1/4 x 3/4 FB	1/4 x 3/4 FB	
FABRIC	2" MESH - 9 GA	2" MESH - 9 GA	2" MESH - 9 GA	2" MESH - 9 GA	2" MESH - 9 GA	1 1/2" MESH - 11 GA	
DEPTH OF FOOTING	33"	33"	36"	36"	36"	36"	
MIDDLE RAIL	NONE	NONE	NONE	NONE	NONE	1 1/2" O.D. @ 2.27 Lbs	

GATES TABLE OF SIZES AND MEASUREMENTS							
HEIGHT OF FENCE TO BE USED WITH	SPECIAL	4 FOOT	5 FOOT	6 FOOT	8 FOOT	12 FOOT	
GATE OPENING 'DOUBLE'		12'-0"	12'-0"	12'-0"	12'-0"	20'-0"	
GATE OPENING 'SINGLE'		4'-0"	4'-0"	4'-0"	4'-0"		
FRAME S & D		1 1/2" O.D. @ 2.27 Lbs	2" O.D. @ 2.27 Lbs	2" O.D. @ 2.27 Lbs	2" O.D. @ 2.27 Lbs	2" O.D. @ 2.27 Lbs	
POST S & D		2 1/2" Ø	2 1/2" Ø	3" Ø	3" Ø	4" Ø	
TRUSS ROD S & D		3/8" Ø	3/8" Ø	3/8" Ø	3/8" Ø	3/8" Ø	
BRACING S & D		NONE	NONE	1 1/2" O.D.	1 1/2" O.D.	1 1/2" O.D.	
STRETCHER BAR S & D		1/4 x 3/4	1/4 x 3/4	1/4 x 3/4	1/4 x 3/4	1/4 x 3/4	
FABRIC S & D		2" MESH - 9 GA	2" MESH - 9 GA	2" MESH - 9 GA	2" MESH - 9 GA	2" MESH - 9 GA	
TYPE HINGE S & D		PIVOT	PIVOT	PIVOT	PIVOT	PIVOT	
TYPE STOP 'D' ONLY		HOLDBACK	HOLDBACK	HOLDBACK	HOLDBACK	HOLDBACK	
TYPE KEEPER 'S' ONLY		FORCE LATCH	FORCE LATCH	FORCE LATCH	FORCE LATCH	FORCE LATCH	
LOCKING DEVICE S & D		REQ'D	REQ'D	REQ'D	REQ'D	REQ'D	

BARRIER FENCING DETAILS



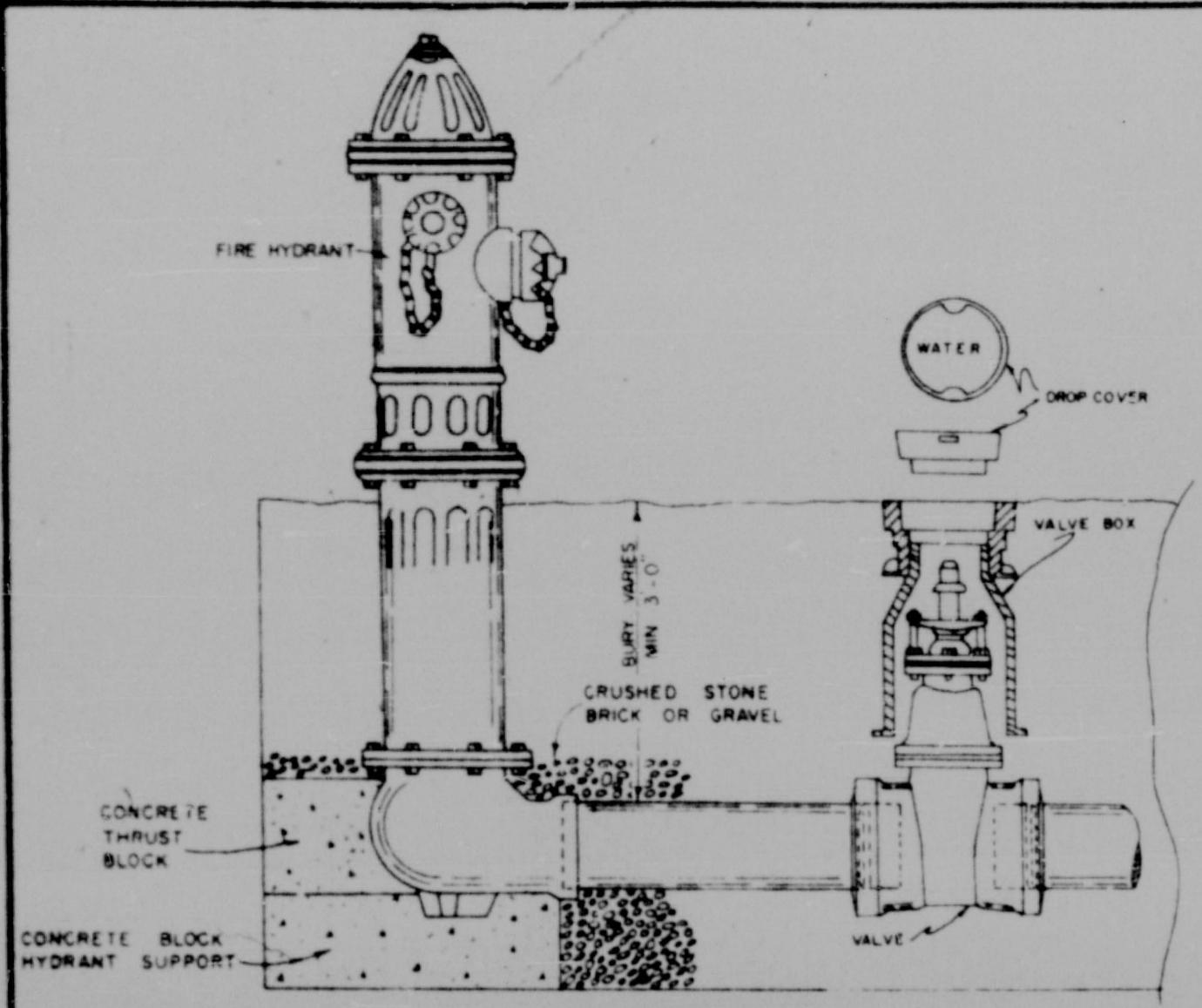
FENCE WIRE FASTENER DETAIL



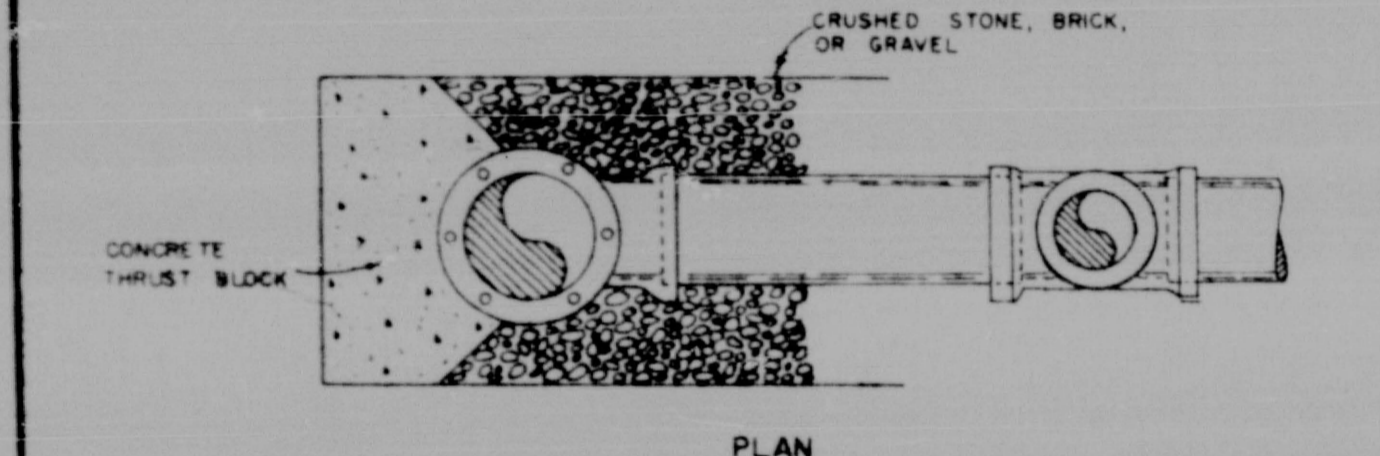
GATE DETAIL

RESTRICTIVE FENCING DETAILS

DESIGNED	SCALE NONE	LESTER ENGINEERING COMPANY			
DRAWN T.B.	DRWG NO 72-904	CONSULTING ENGINEERS			
APPROVED		JACKSON, MISSISSIPPI			
DATE 1-22-73					
REV. NO.	DATE	NATURE OF REVISION	BY	CHKD	APPD.



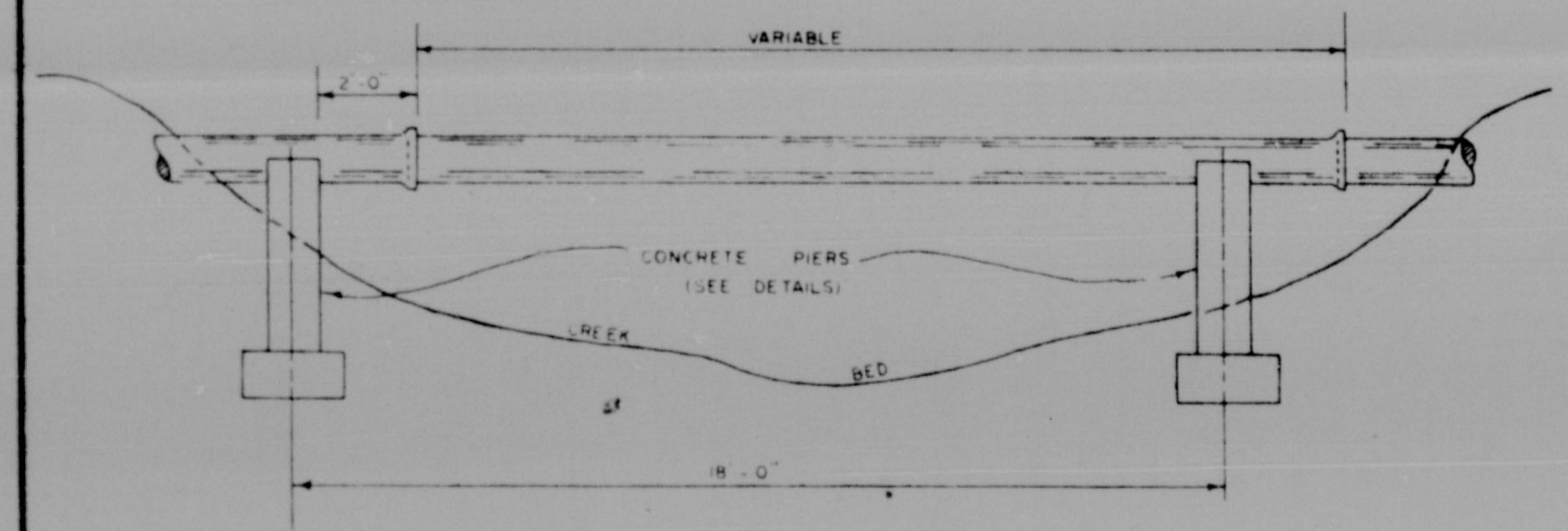
ELEVATION



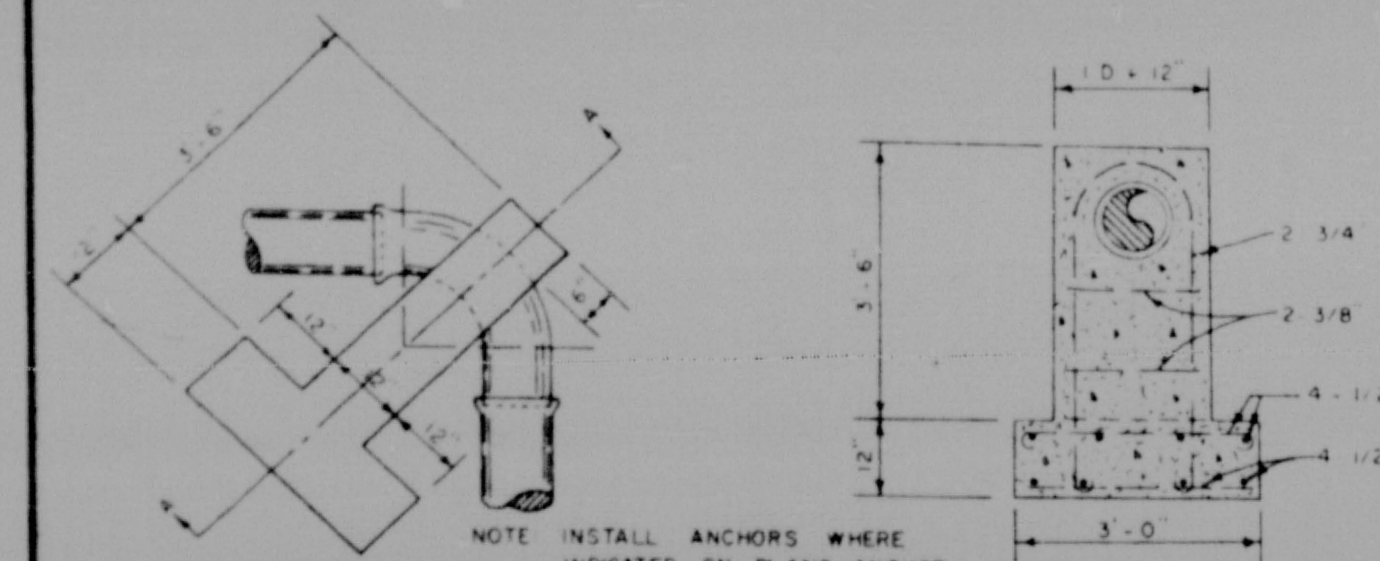
PLAN

NOTE GATE VALVE REQUIRE WHEN CONNECTED TO 10" DIAMETER OR LARGER MAINS

FIRE HYDRANT INSTALLATION DETAILS



TYPICAL CREEK CROSSING INSTALLATION

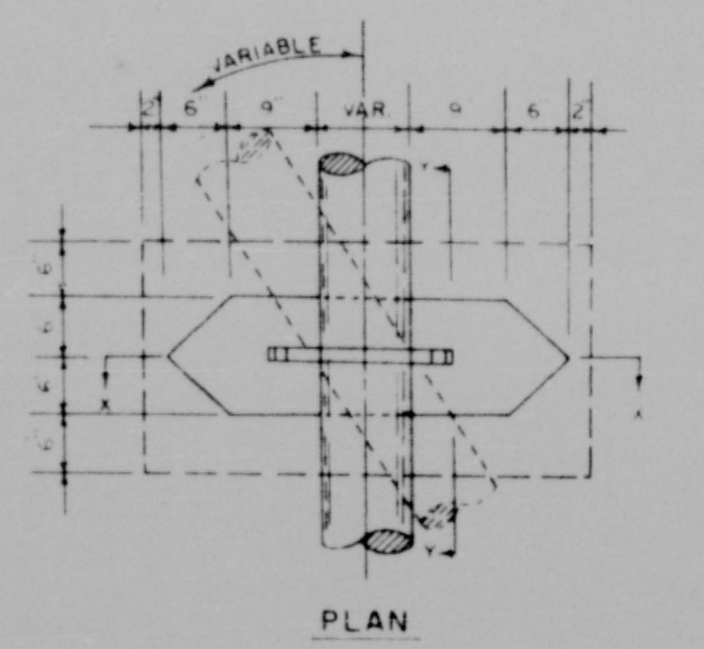


ELEVATION

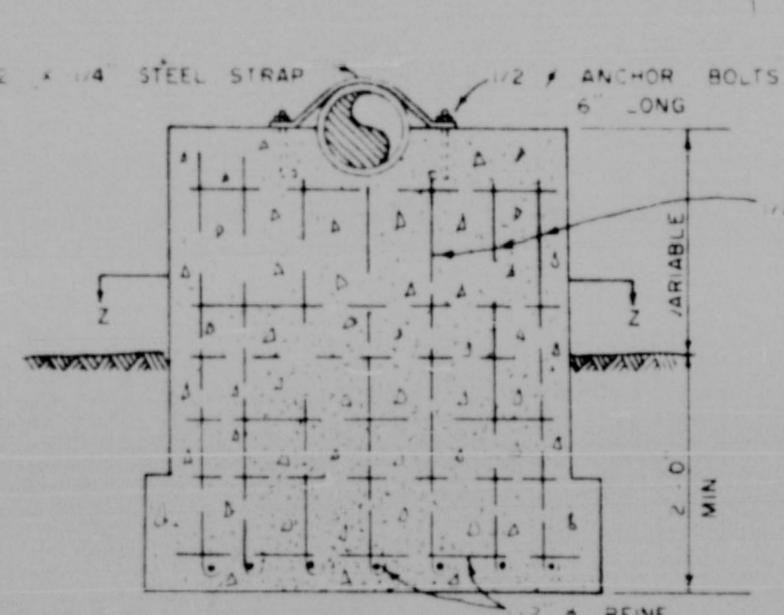
SECTION A-A

NOTE INSTALL ANCHORS WHERE INDICATED ON PLANS, ANCHOR FOR 45° AND 22 1/2° BENDS TO BE SIMILAR TO THAT SHOWN FOR 90° BENDS

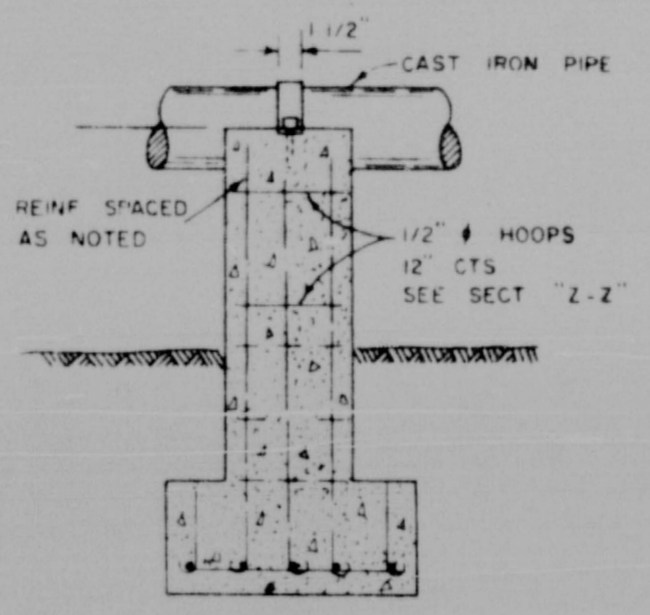
DETAILS OF CONCRETE ANCHOR FOR VERTICAL BENDS



PLAN



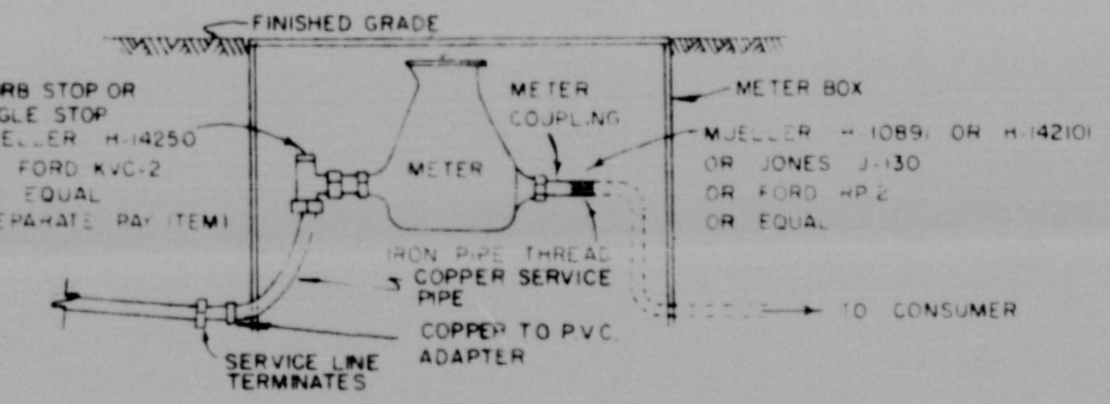
SECTION "X-X"



SECTION "Y-Y"

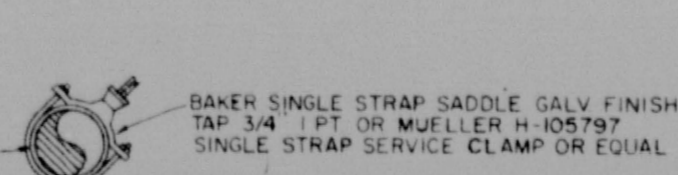
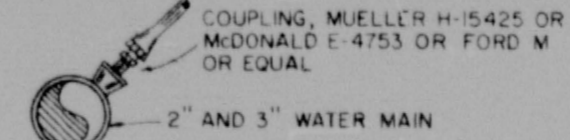
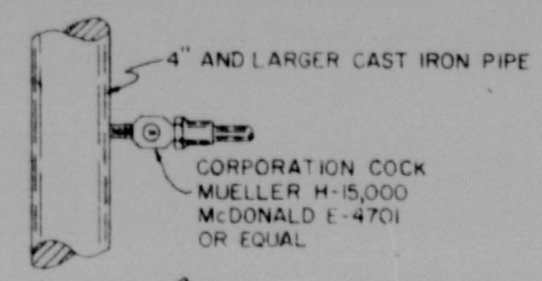
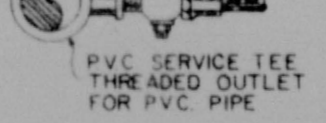
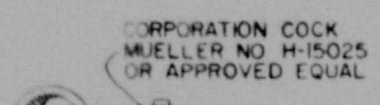
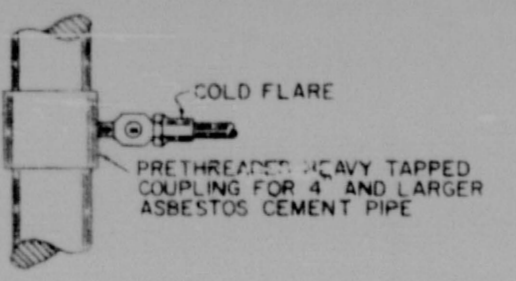
CONCRETE PIER DETAILS

NOTE POINT PIERS IN DIRECTION OF FLOW OF WATER

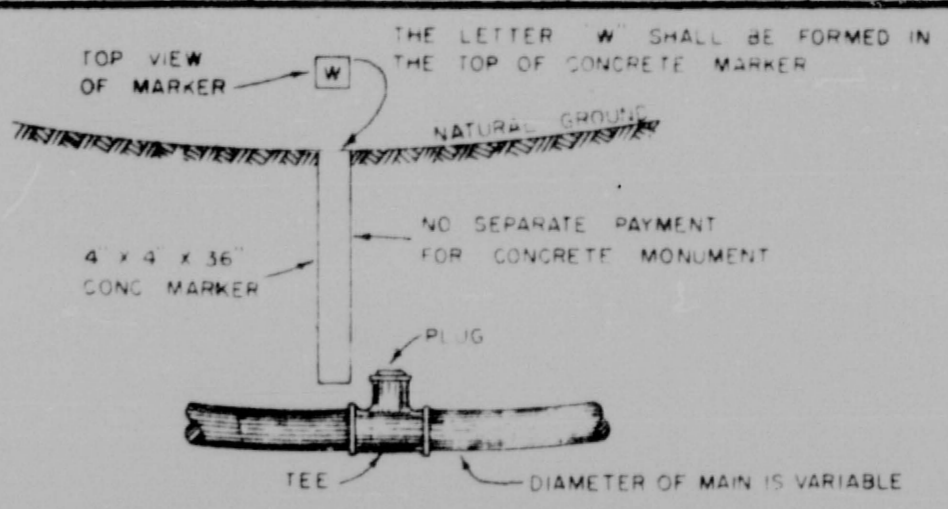


TYPICAL SERVICE ASSEMBLY

- TYPE "A" FOR 3/4" x 5/8" METER
- TYPE "B" FOR 3/4" METER
- TYPE "C" FOR 1" METER
- TYPE "D" FOR 1 1/2" METER

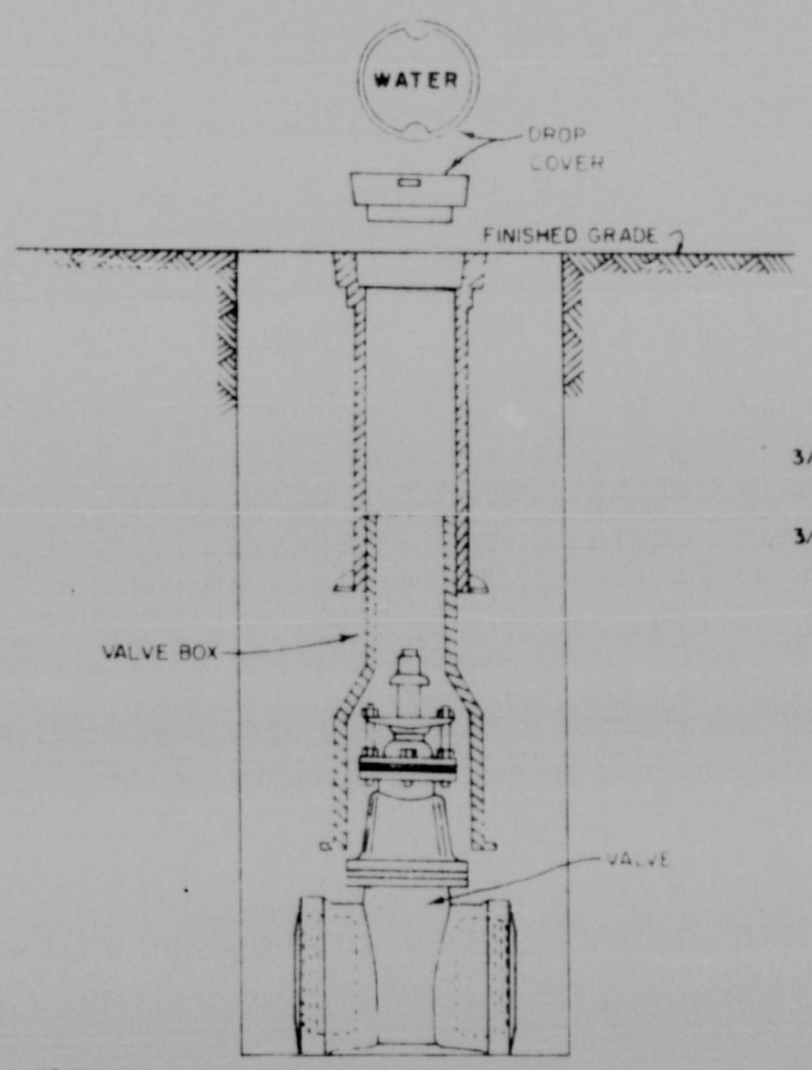


WATER SERVICE ASSEMBLY

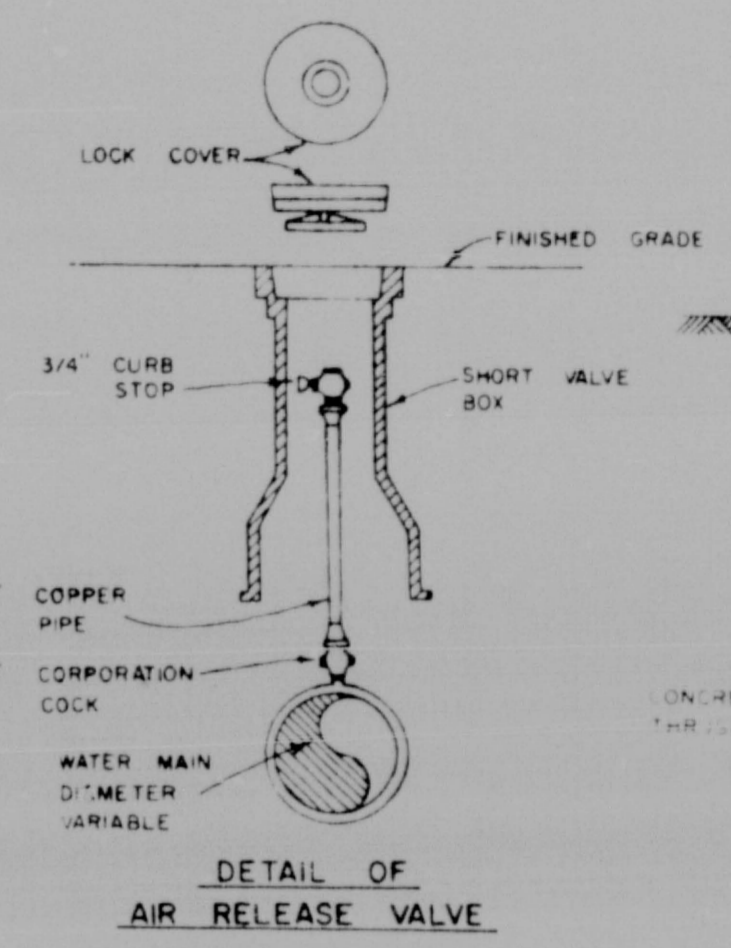


DETAIL OF EMERGENCY DRAIN

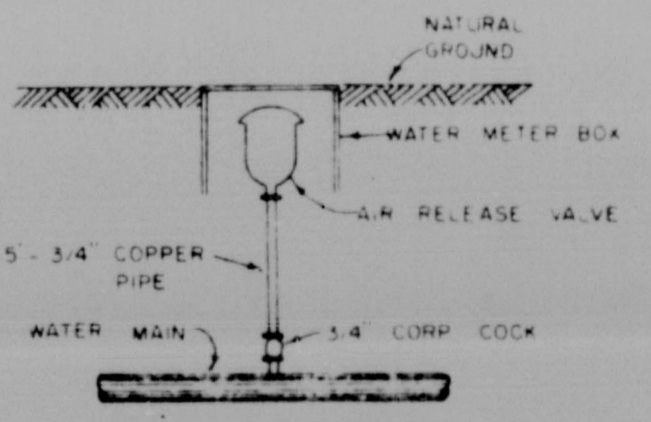
TO BE PLACED IN LOW PLACES AS DIRECTED BY THE ENGINEER



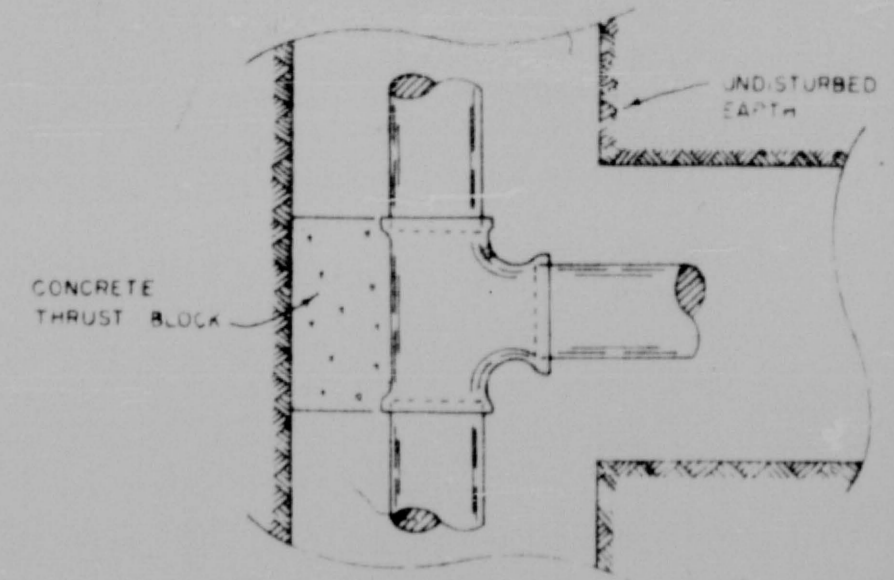
DETAIL OF VALVE AND VALVE BOX INSTALLATION



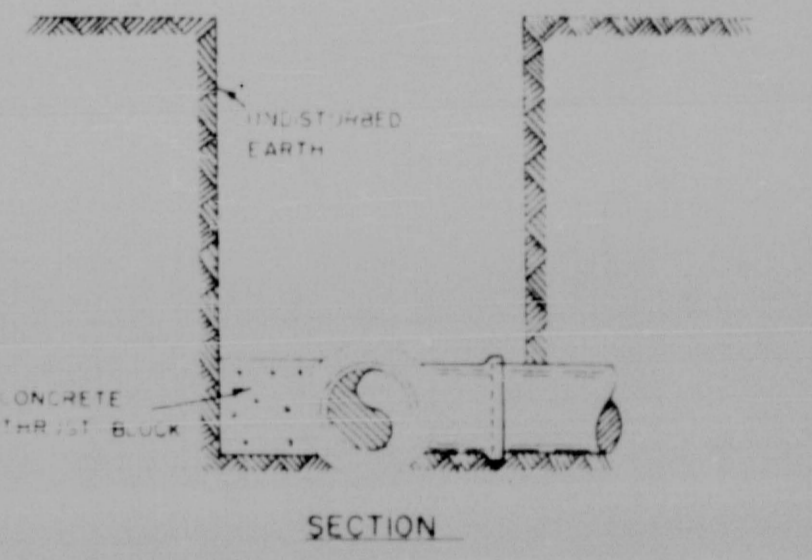
DETAIL OF AIR RELEASE VALVE



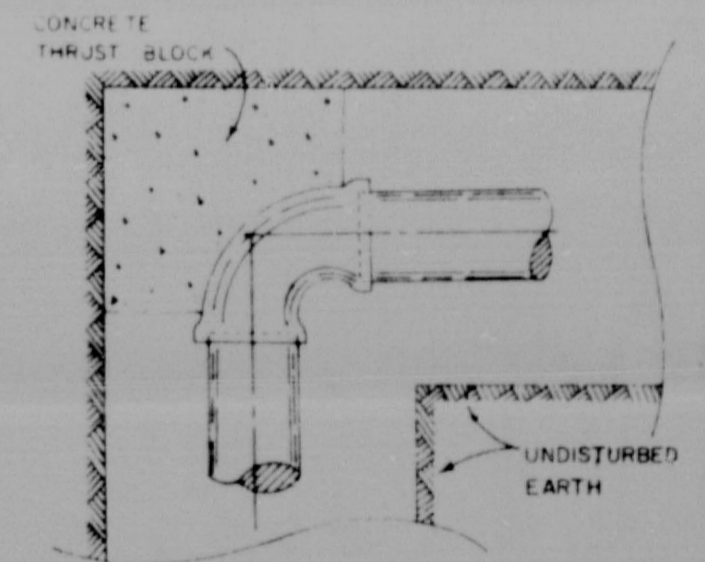
DETAIL OF AUTOMATIC AIR RELEASE VALVE ASSEMBLY



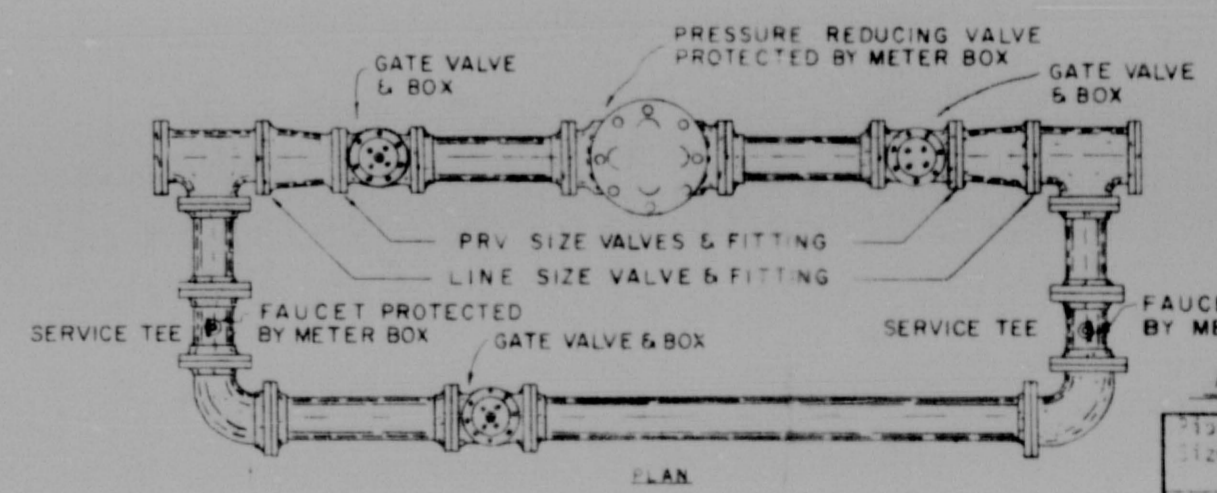
PLAN BLOCKING FOR TEE



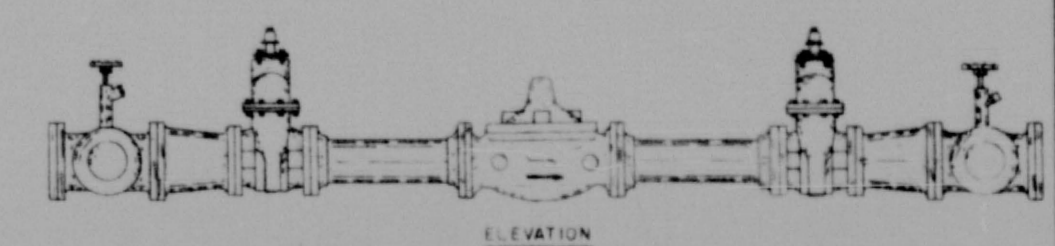
SECTION



PLAN BLOCKING FOR 90° BENDS



DETAILS OF CONCRETE BLOCKING FOR PIPE AND FITTINGS



PRESSURE REDUCING VALVE ASSEMBLY

AREA OF BEARING FACE OF CONCRETE THRUST BLOCKS

Pipe Size	90° Bend			45° Bend			Plugs & Tees		
	A.C.	PVC	C.I.	A.C.	PVC	C.I.	A.C.	PVC	C.I.
4-6	3	3	3	2	3	3	3	3	3
8	3	4	3	3	3	3	3	3	3
10	4	6	3	3	3	3	3	3	3
12	6	8	3	5	4	4	4	4	4
16	11	11	4	7	7	7	7	7	7
20	18	18	8	12	12	12	12	12	12
24	27	27	12	18	18	18	18	18	18

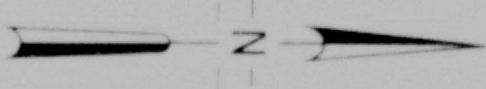
Note: Area of Bearing Face in Square Feet

DESIGNED	SCALE NONE				
DRAWN R.W.F.	DRAW NO 72-904				
APPROVED					
DATE 12-20-71					
REV NO	DATE	NATURE OF REVISION	BY	CHKD	APPD.

LESTER ENGINEERING COMPANY
CONSULTING ENGINEERS
JACKSON, MISSISSIPPI

DIVISION I
CONSTRUCTION DETAILS
WATER DISTRIBUTION SYSTEM

SHEET NO
6 OF 6



WELL NO. 3
TANK NO. 2

Future
12" well
No. 4
@ Crestview

LEGEND

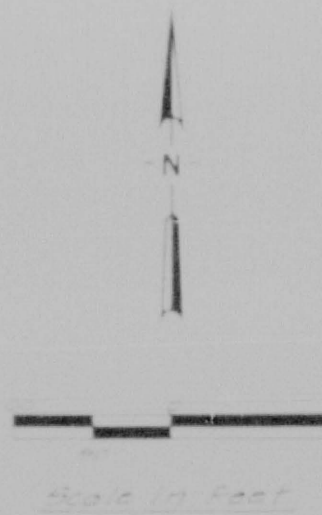
---	EXISTING WATER MAIN, 2" AND UNDER (SIZE INDICATED)
---	EXISTING WATER MAIN, 3" AND 4" (SIZE INDICATED)
---	EXISTING WATER MAIN, 6" (SIZE INDICATED)
---	EXISTING WATER MAIN, 8" (SIZE INDICATED)

DESIGNED	SCALE 1" = 500'				
DRAWN R.H.H.	DRWG NO. 72-904				
APPROVED					
DATE					
REV NO.	DATE	NATURE OF REVISION	BY	CHKD	APPD

LESTER ENGINEERING COMPANY
CONSULTING ENGINEERS
JACKSON, MISSISSIPPI

EXISTING WATER SERVICE FACILITIES
TOWN OF RIDGELAND
MISSISSIPPI

SHEET NO.
1 OF 1



Quantities

100	L.F.	34" Copper Service Line
0	Each	Clamp Clamps
0	Each	Clamp Blocks
1200	L.F.	6" Cast Iron Water Main
5	Each	Gate Valves
6	Each	Gate Valve Boxes
4	Each	6" Gate Valve Boxes
5	Each	4" Plugs
5	Each	4" Tees
5	Each	4" F.H. Reg'd

APPROVED
AS TO SANITARY DESIGN ONLY
[Signature] 5/2/73
Division of Sanitary Engineering
Mississippi State Board of Health, Jackson, Miss.

Note: No connection until Elevated Tank is in operation.

DESIGNED	SCALE	1" = 100'					
DRAWN	DRWG NO	72-901					
APPROVED							
DATE							
REV NO	DATE	NATURE OF REVISION	BY	CHKD	APPD	CONTRACT III - SUPPLEMENTAL AGREEMENT # 1 6" CAST IRON WATER MAINS AND SERVICES TO EXISTING DWELLINGS LOCATED SOUTH OF RIDGELAND, MISSISSIPPI	SHEET NO
1	4/24/73	ADDED 6" WATER MAIN & ACCESSORIES	SH				