

CITY OF RIDGELAND, MISSISSIPPI

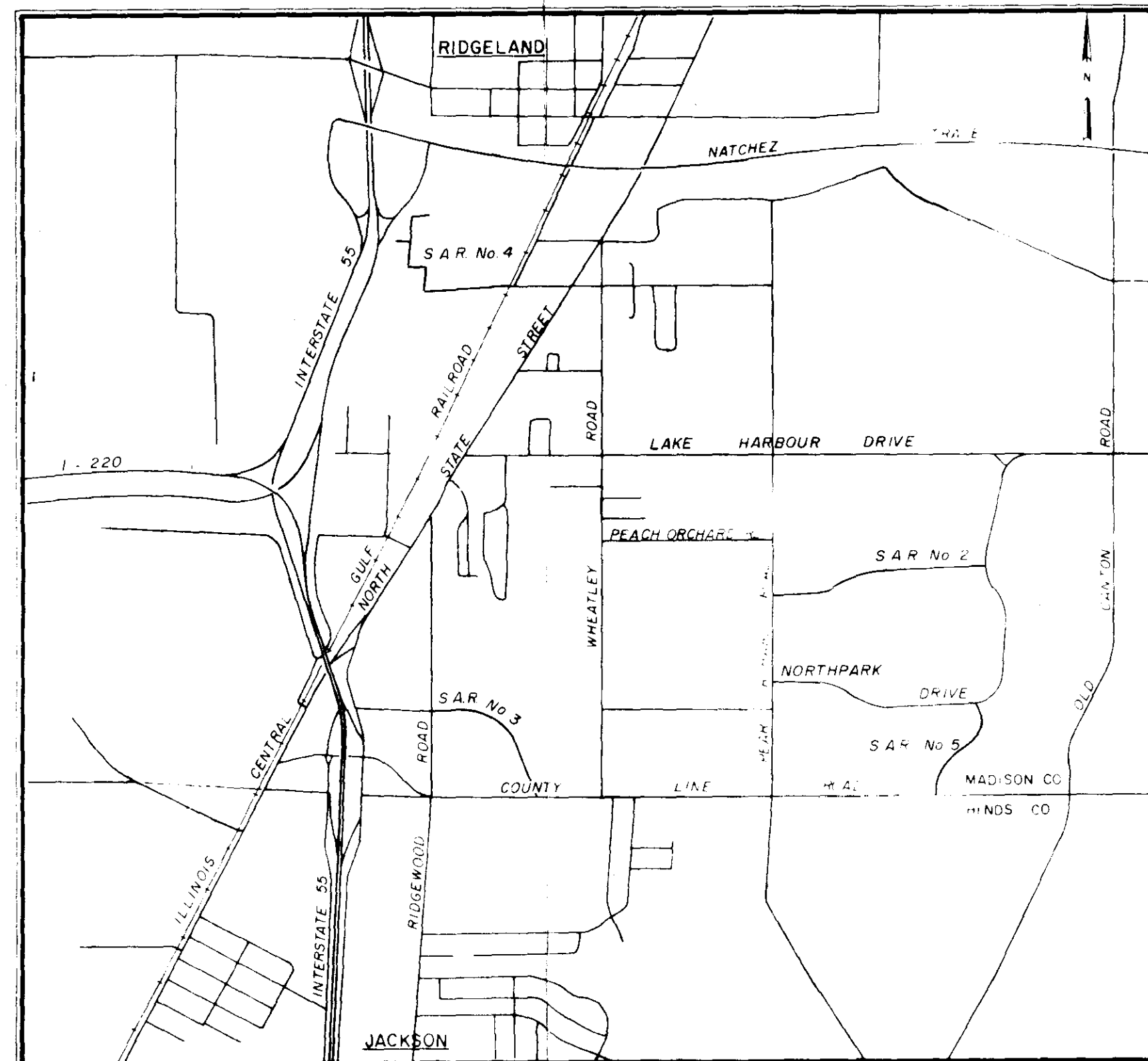
PROPOSED 8" WATER MAIN

*HAAL:rs
4/10/00*

Mayor
Hite Wolcott

Mayor Pro Tem
Hilda Boyd

City Attorney
Milton Case



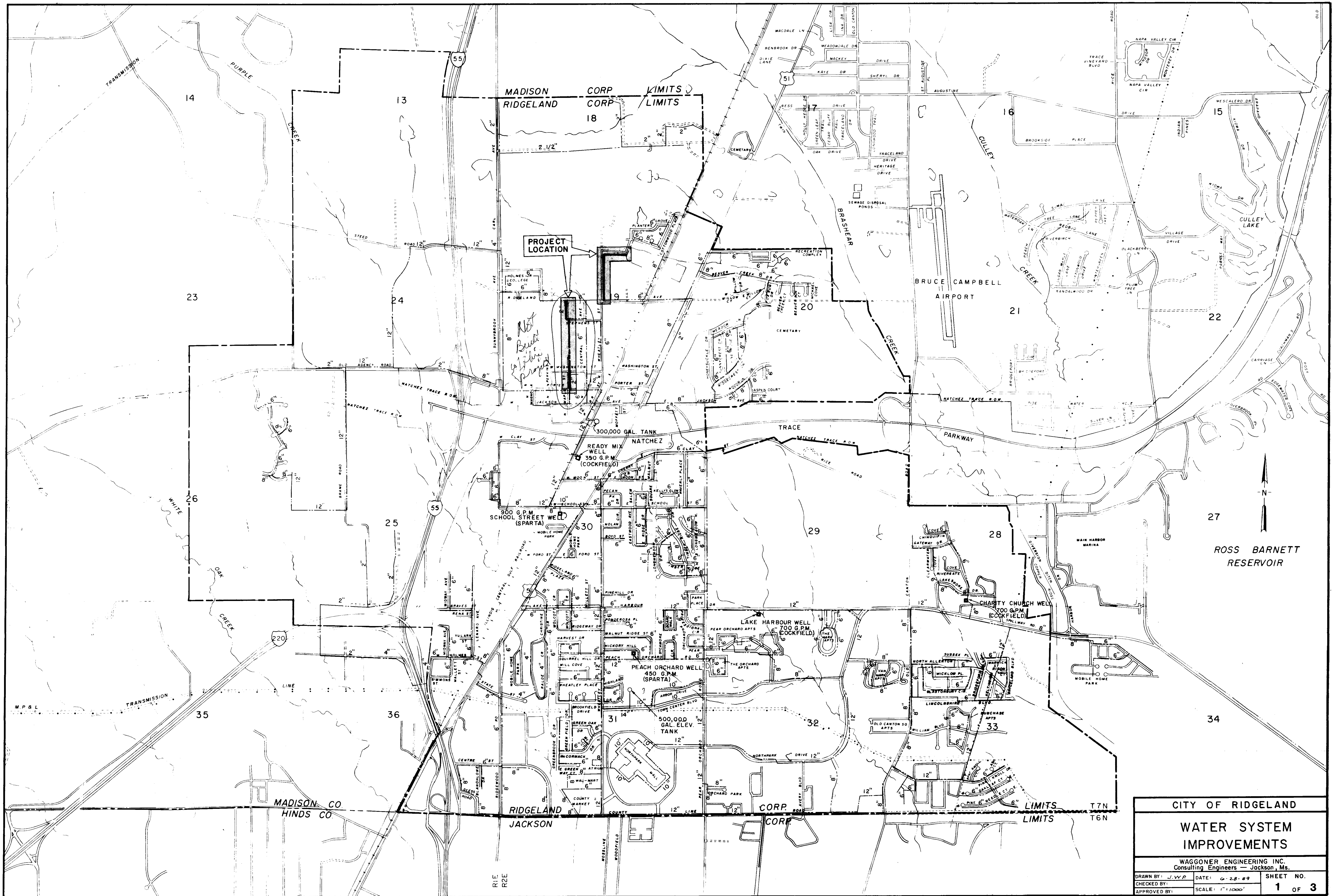
Aldermen
Al Bible
Hilda Boyd
Harvey Carr, Jr.
Gene McGee
Gilbert Sollek

Public Works Director
Horace M. Ross

JUNE , 1989

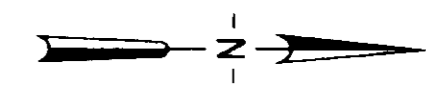
WAGGONER ENGINEERING INC.
Consulting Engineers
Jackson / Brandon, Ms.

PWP 1835

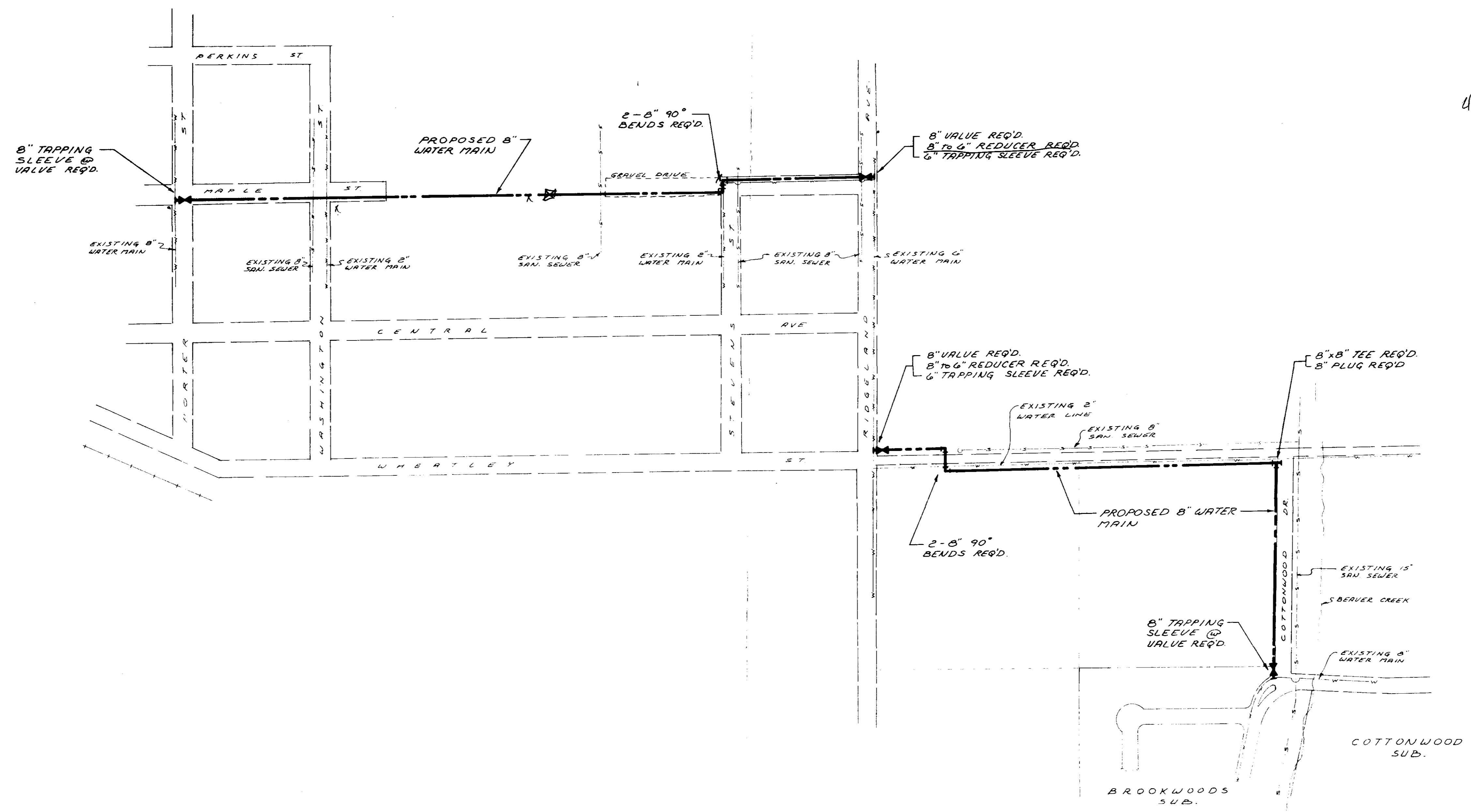


CITY OF RIDGELAND		
WATER SYSTEM IMPROVEMENTS		
WAGGONER ENGINEERING INC. Consulting Engineers - Jackson, Ms.		
DRAWN BY: J.W.P.	DATE: 6-28-89	SHEET NO.
CHECKED BY:	SCALE: 1" = 1000'	1 OF 3
APPROVED BY:		

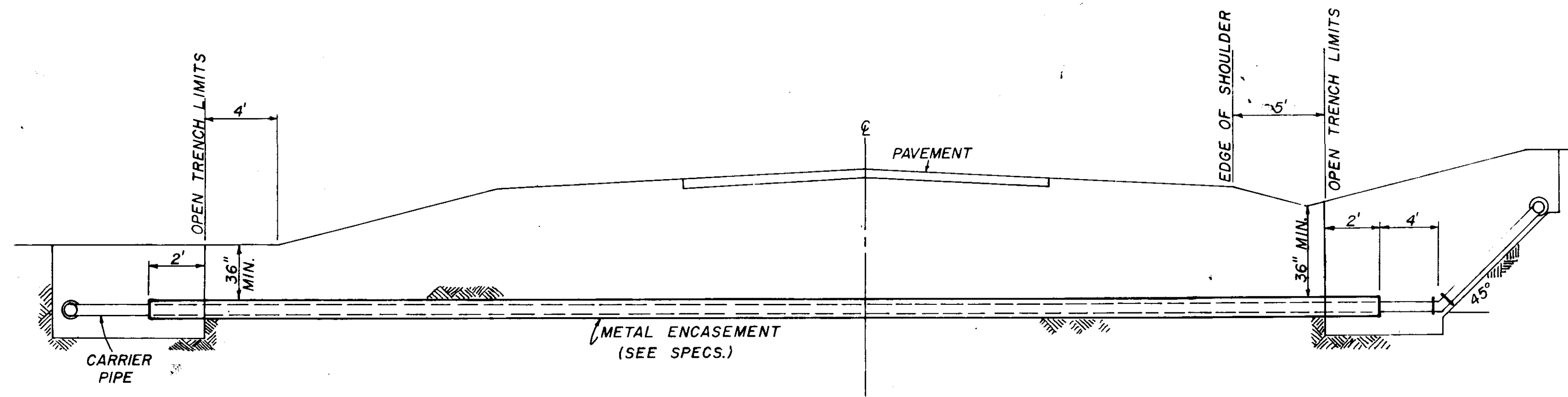
NO.	DATE	REVISION



10
200
4 | 20000

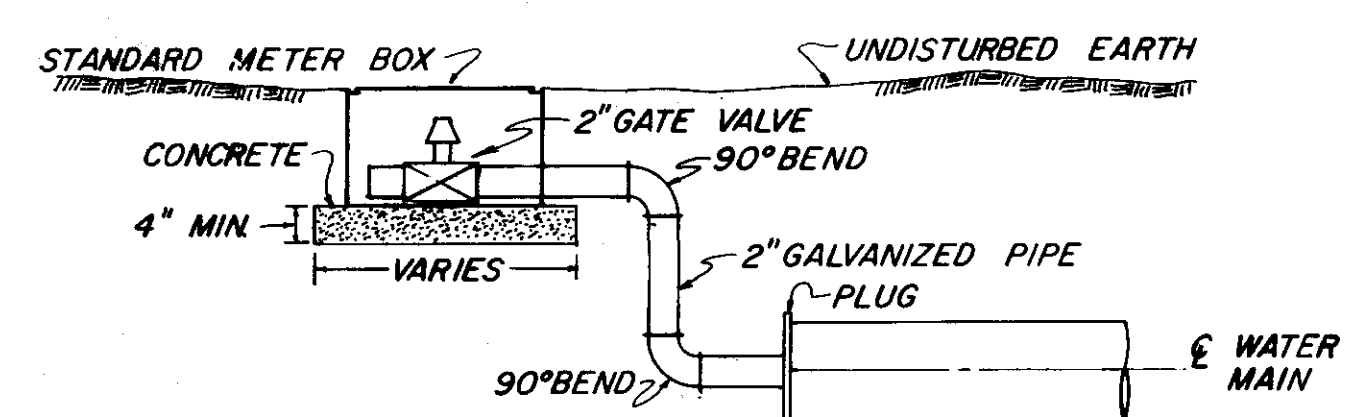


CITY OF RIDGELAND		
PROPOSED 8" WATER MAIN		
WAGGONER ENGINEERING INC. Consulting Engineers — Jackson, Ms.		
DRAWN BY: JWP	DATE: 6-28-89	SHEET NO.
CHECKED BY:	SCALE: 1" = 200'	2 OF 3
APPROVED BY:		

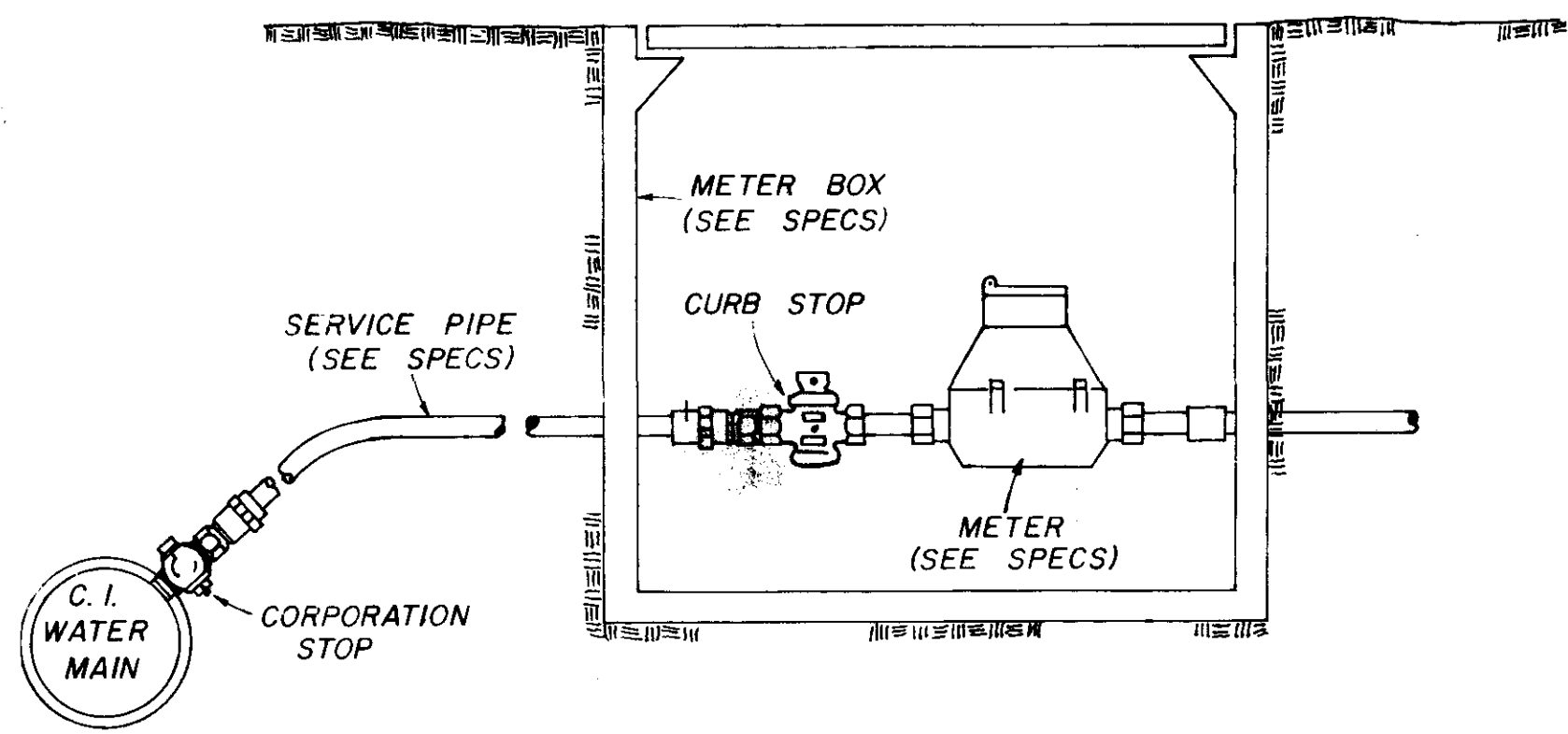


TYPICAL CASSED CROSSING

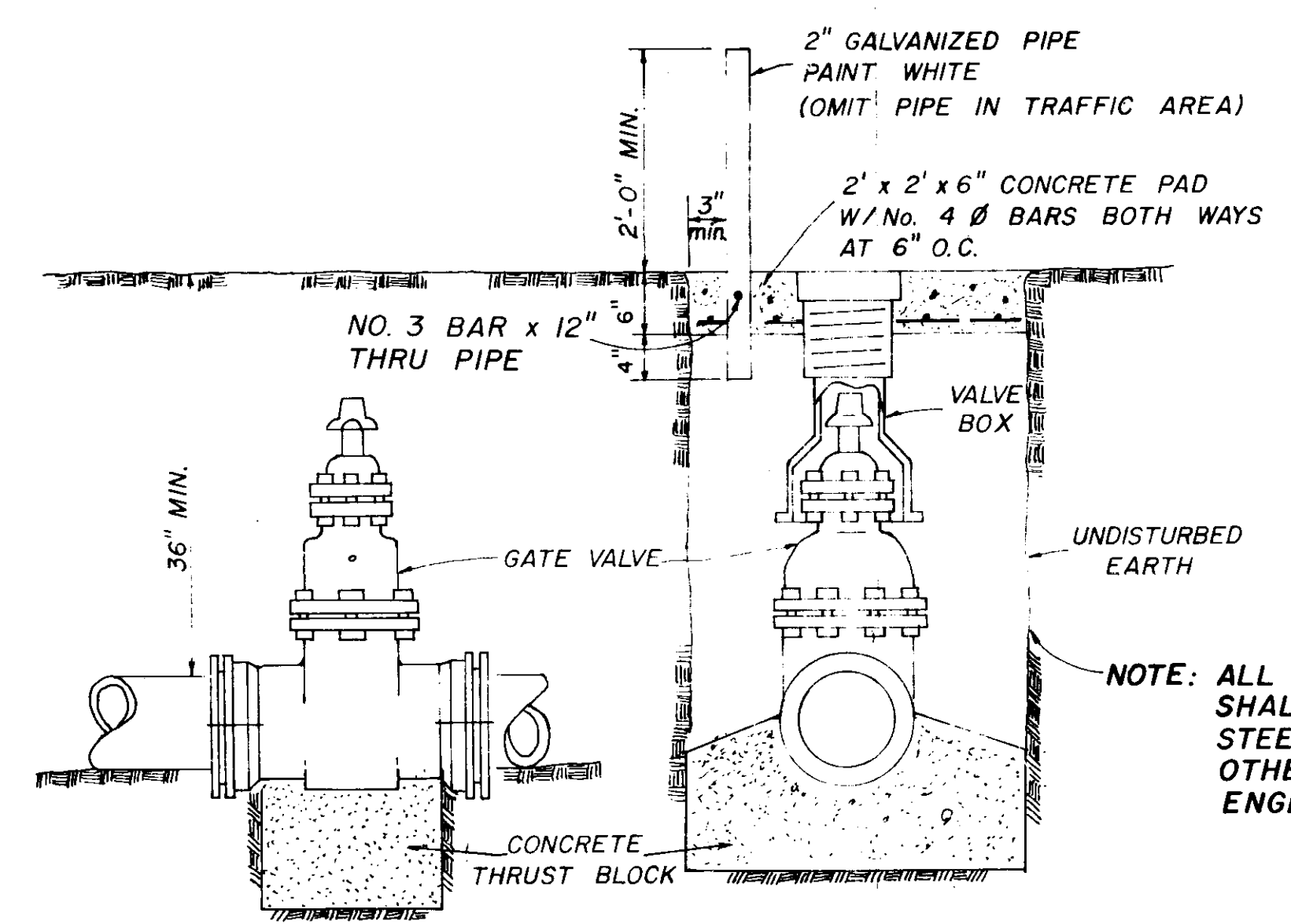
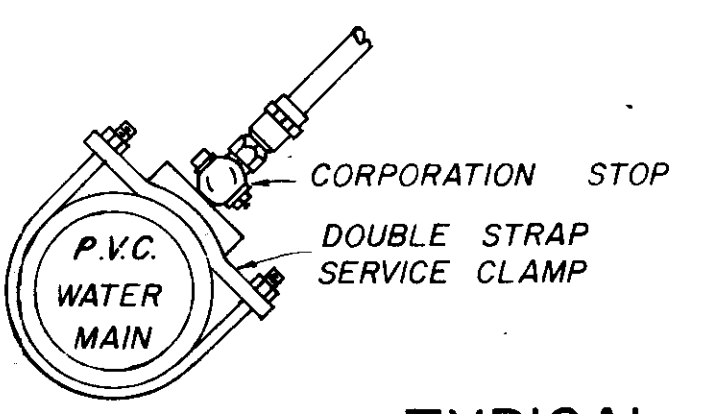
NOTE: COMPENSATION FOR CONCRETE THRUST BLOCKS SHALL BE INCLUDED IN THE UNIT PRICE BID FOR VALVES, FIRE HYDRANTS AND FITTINGS.



TYPICAL 2" BLOW-OFF DETAIL

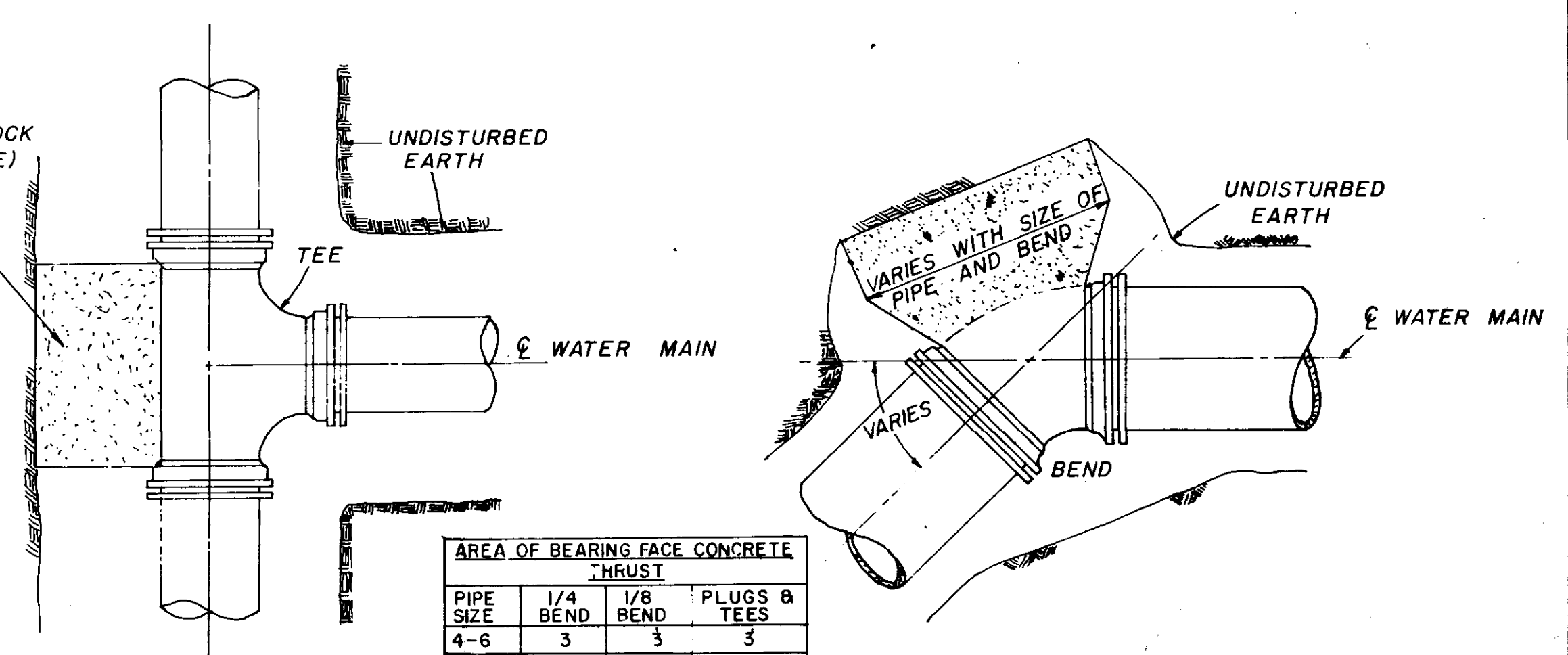


TYPICAL SERVICE ASSEMBLY



TYPICAL VALVE & BOX

NOTE: ALL WATER MAIN CONNECTIONS SHALL BE RODDED WITH ALL STEEL RODS (3/4" MIN.) UNLESS OTHERWISE INSTRUCTED BY ENGINEER.

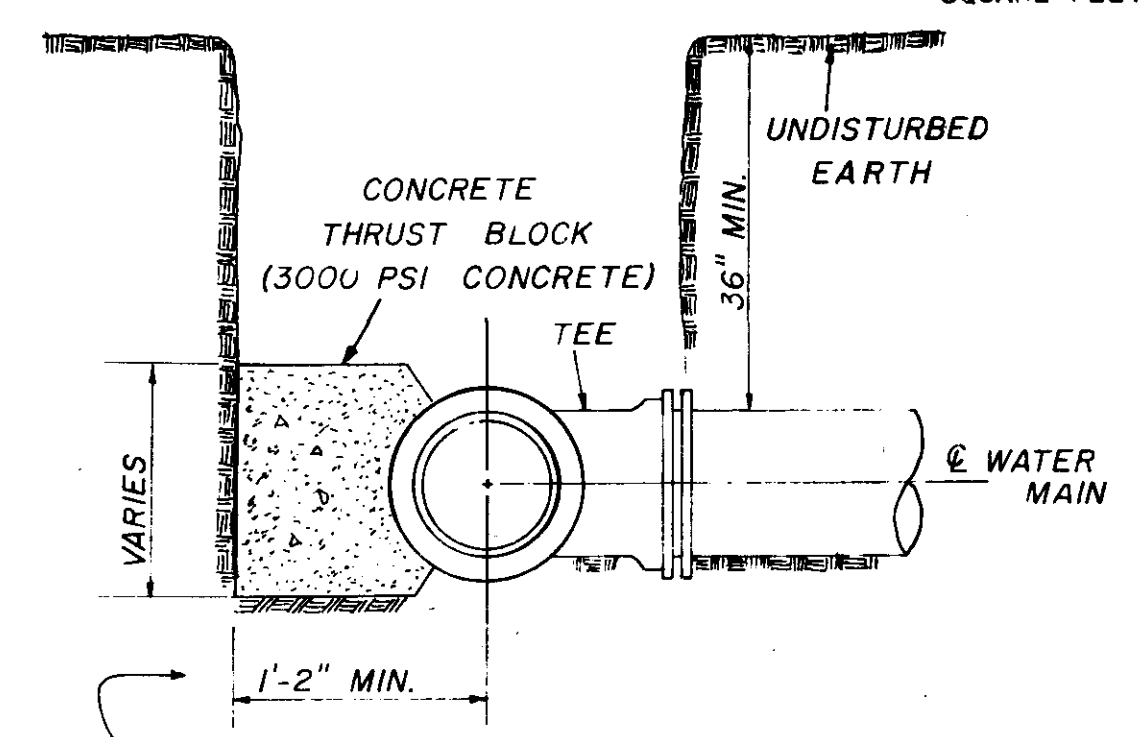


PLAN

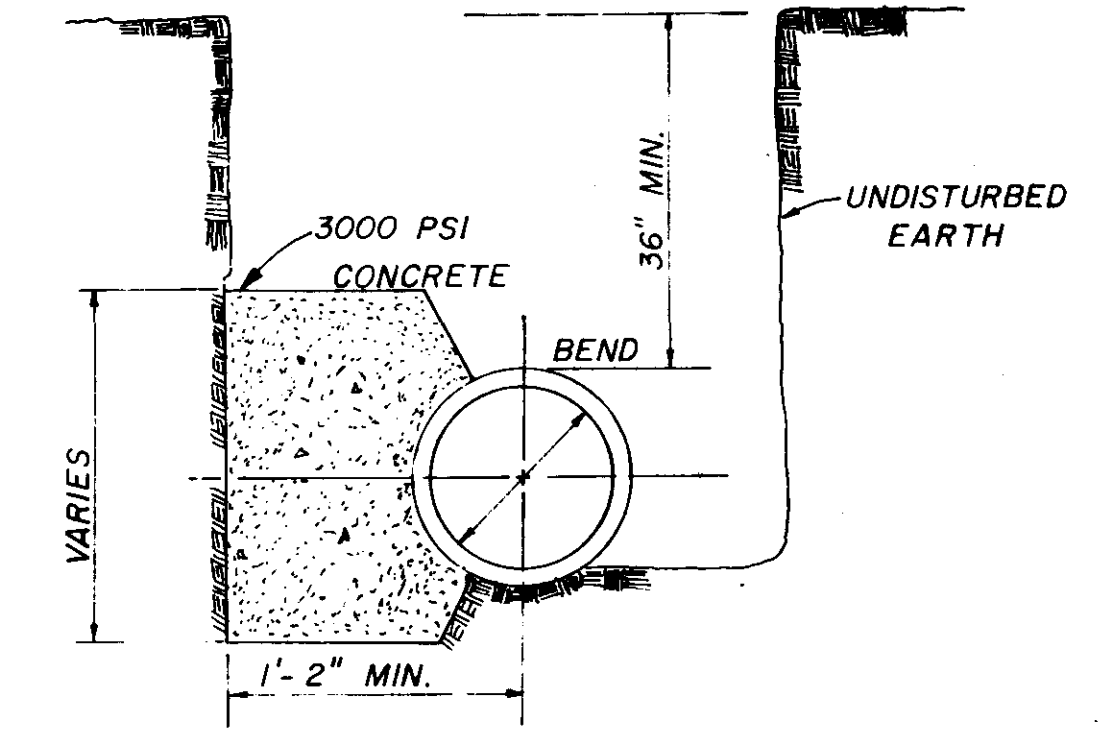
PLAN

PIPE SIZE	1/4 BEND	1/8 BEND	PLUGS & TEES
4-6	3	3	3
8	3	3	3
10	4	3	3
12	6	3	4
16	11	4	7

NOTE: AREA OF BEARING FACE IN SQUARE FEET.

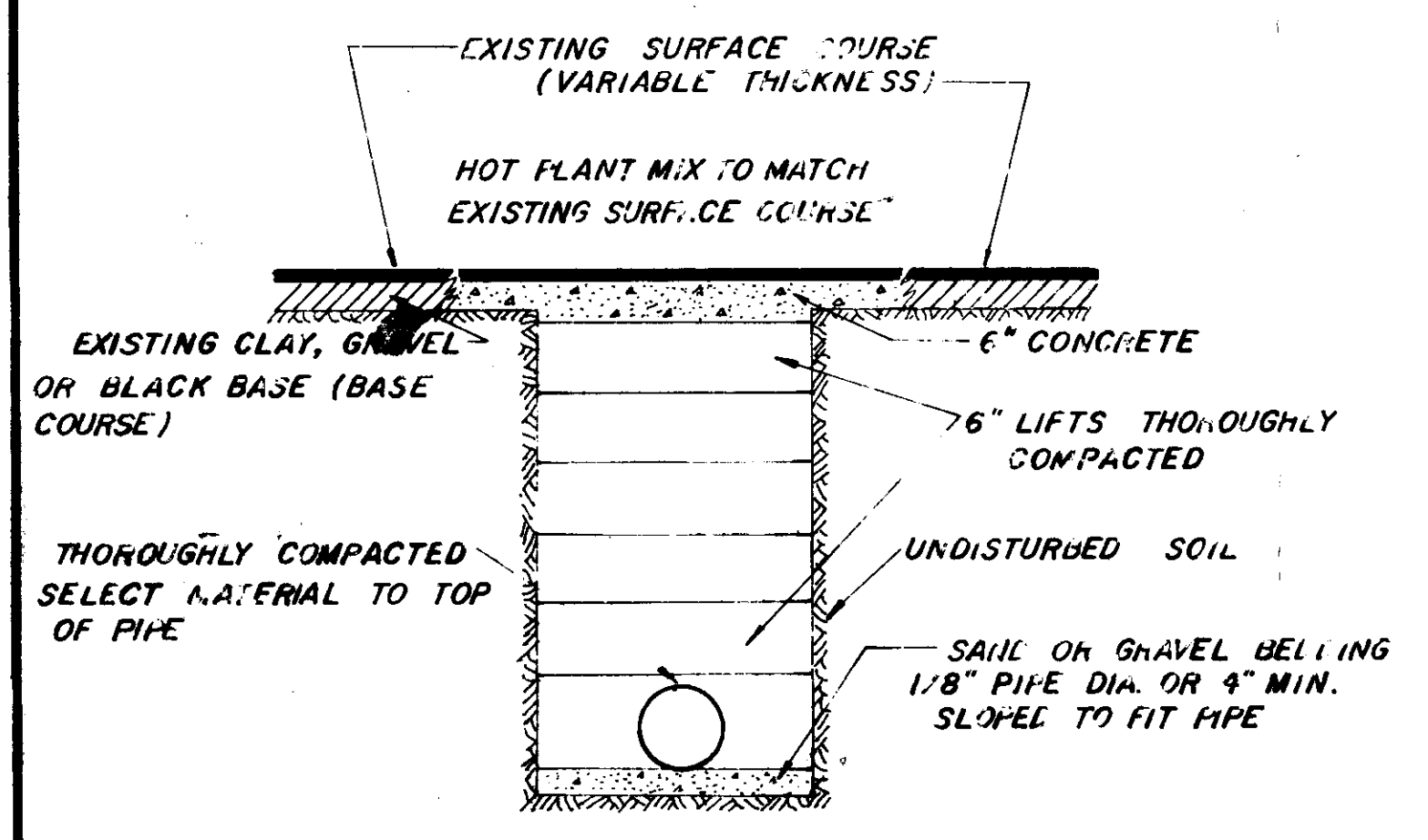


SECTION

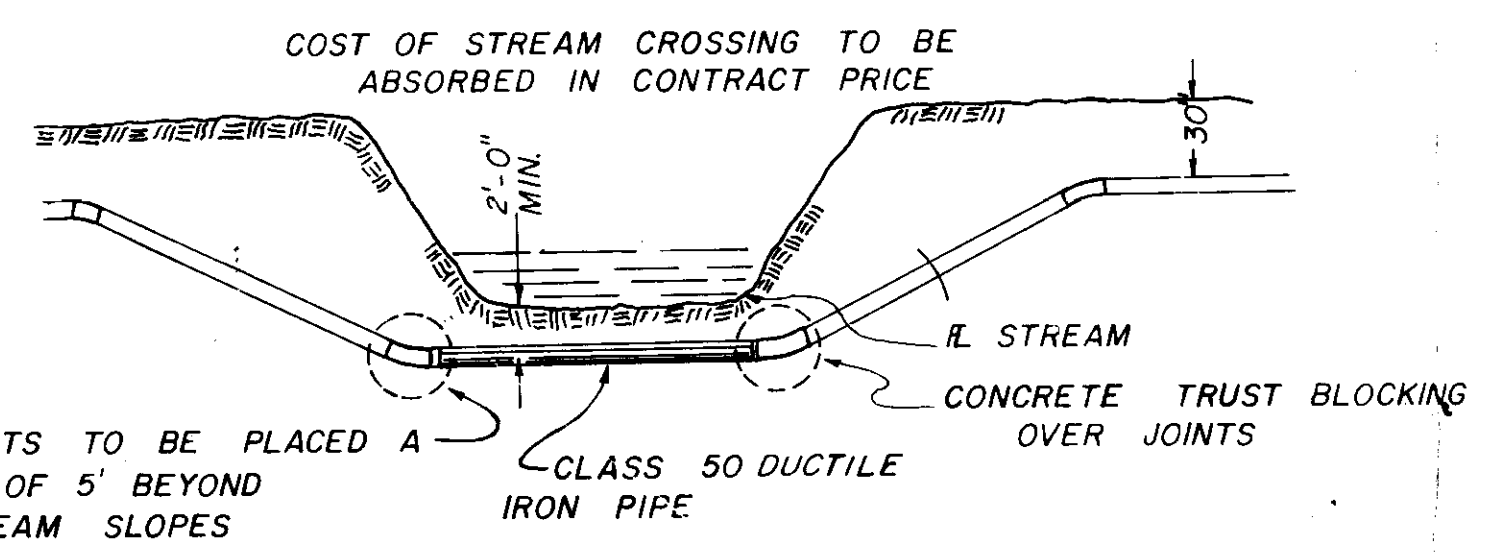


SECTION

BLOCKING DETAILS FOR TEES & BENDS

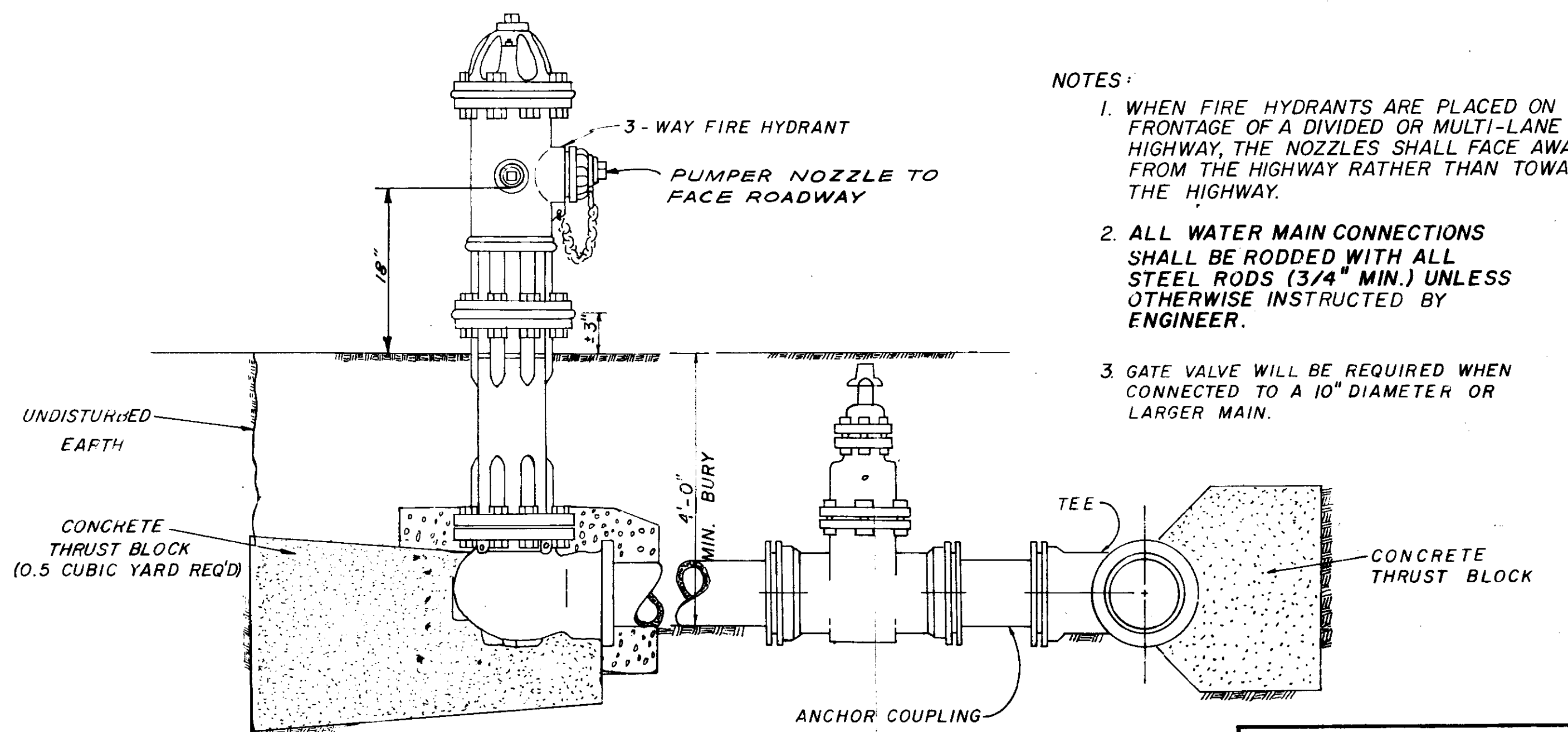


STREET REPAIR OF OPEN CUT



TYPICAL STREAM CROSSING

JOINTS TO BE PLACED A MIN. OF 5' BEYOND STREAM SLOPES



TYPICAL FIRE HYDRANT

- NOTES:
1. WHEN FIRE HYDRANTS ARE PLACED ON THE FRONTAGE OF A DIVIDED OR MULTI-LANE HIGHWAY, THE NOZZLES SHALL FACE AWAY FROM THE HIGHWAY RATHER THAN TOWARD THE HIGHWAY.
 2. ALL WATER MAIN CONNECTIONS SHALL BE RODDED WITH ALL STEEL RODS (3/4" MIN.) UNLESS OTHERWISE INSTRUCTED BY ENGINEER.
 3. GATE VALVE WILL BE REQUIRED WHEN CONNECTED TO A 10" DIAMETER OR LARGER MAIN.

WATER SYSTEM STANDARD DETAILS