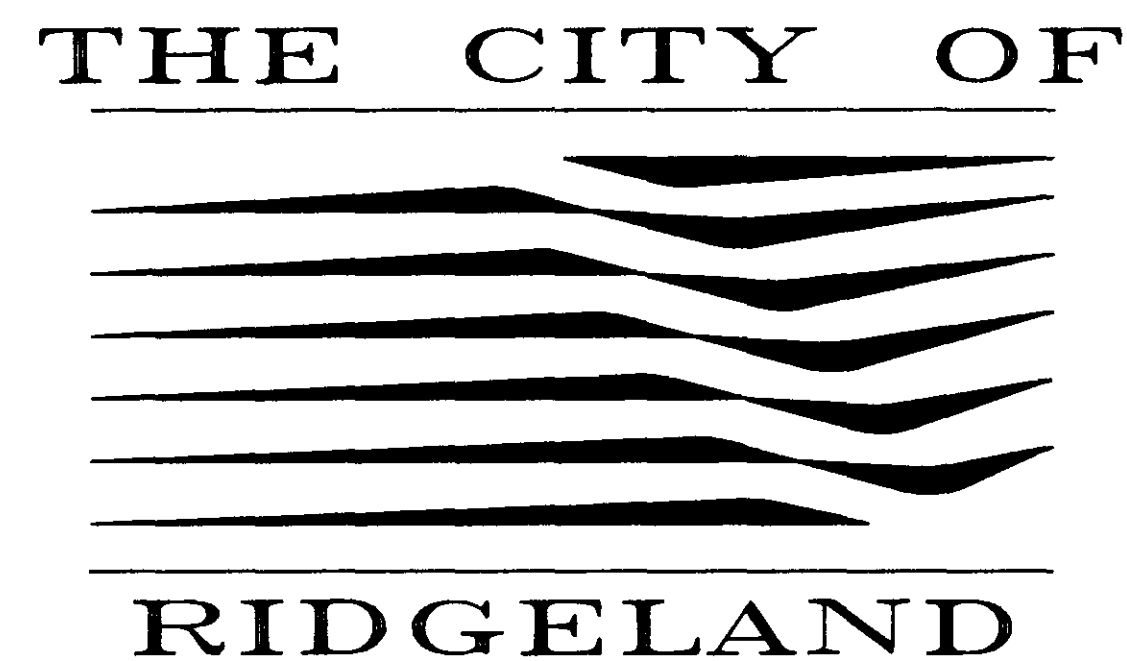


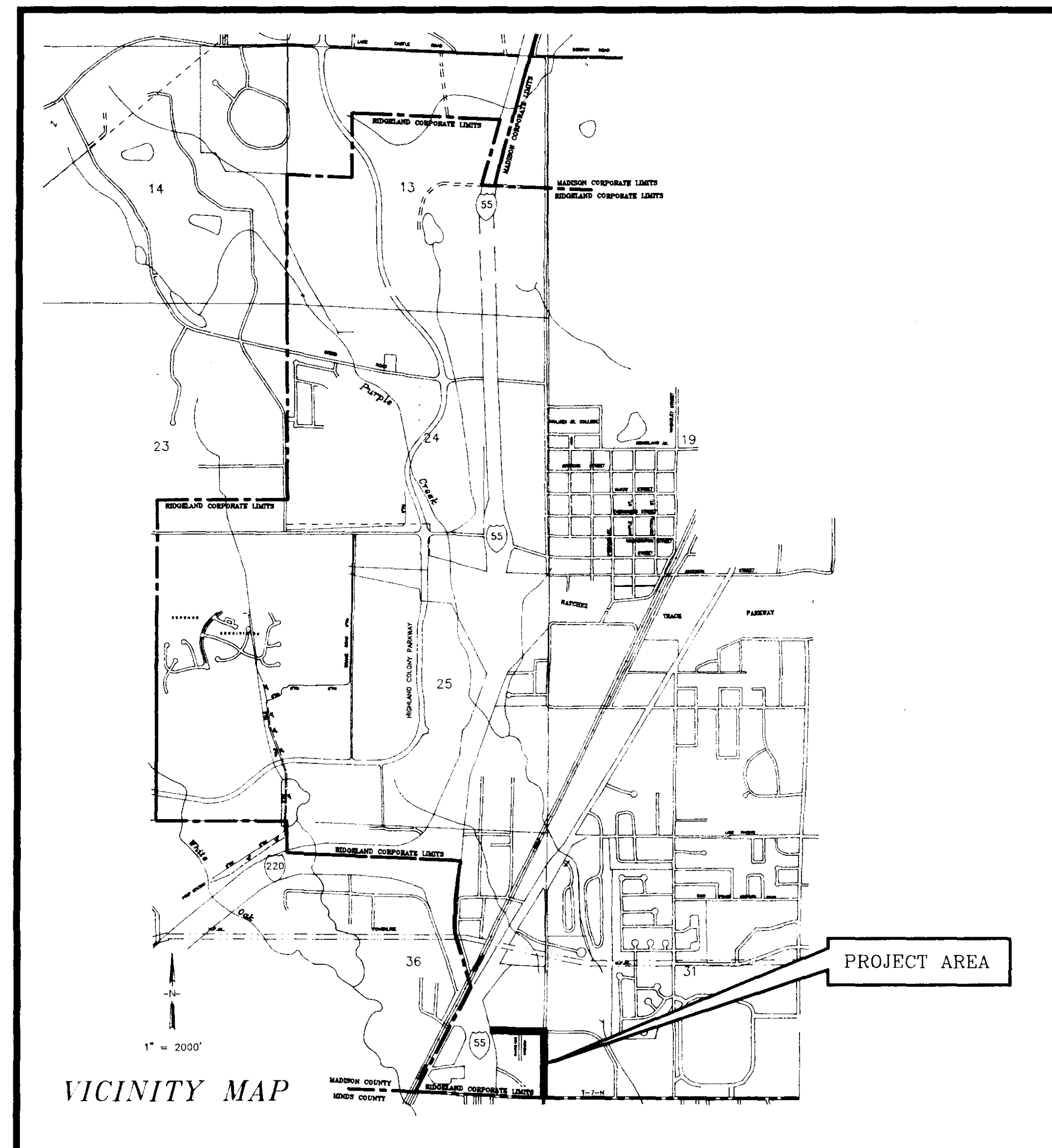
*CITY OF RIDGELAND, MISSISSIPPI
RIDGEWOOD ROAD AND CENTRE STREET
RECONSTRUCTION PLANS*



Mayor:
Gene F. McGee

Mayor Pro Tem:
Harvey Carr, Jr.

City Attorney:
Jerry Mills



Aldermen:

Brian Barcellona
Al Bible
Harvey Carr, Jr.
Linda Davis
Daryl Smith

Public Works Director:
Sam Vinson, P.E.

Asst. Public Works Director:
Sid Hawthorne

City Clerk:
Michael McPhearson

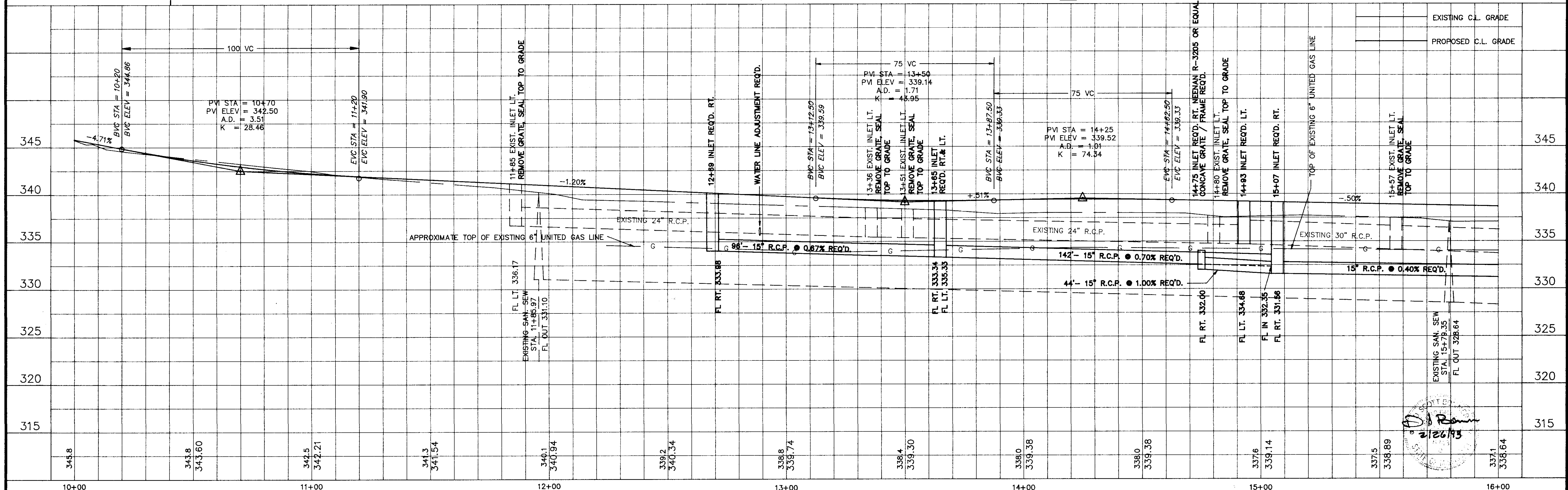
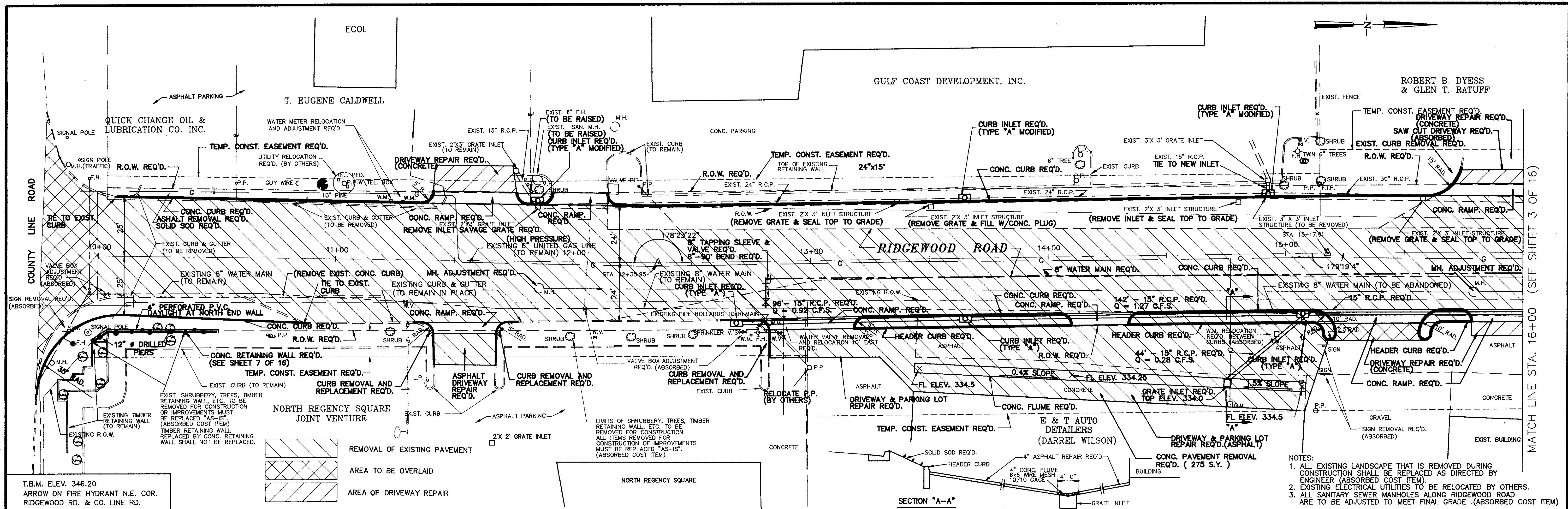
Fire Chief:
Elmer Waits

Police Chief:
Charles Newell

FEBRUARY 1993
WAGGONER ENGINEERING, INC.
CONSULTING ENGINEERS

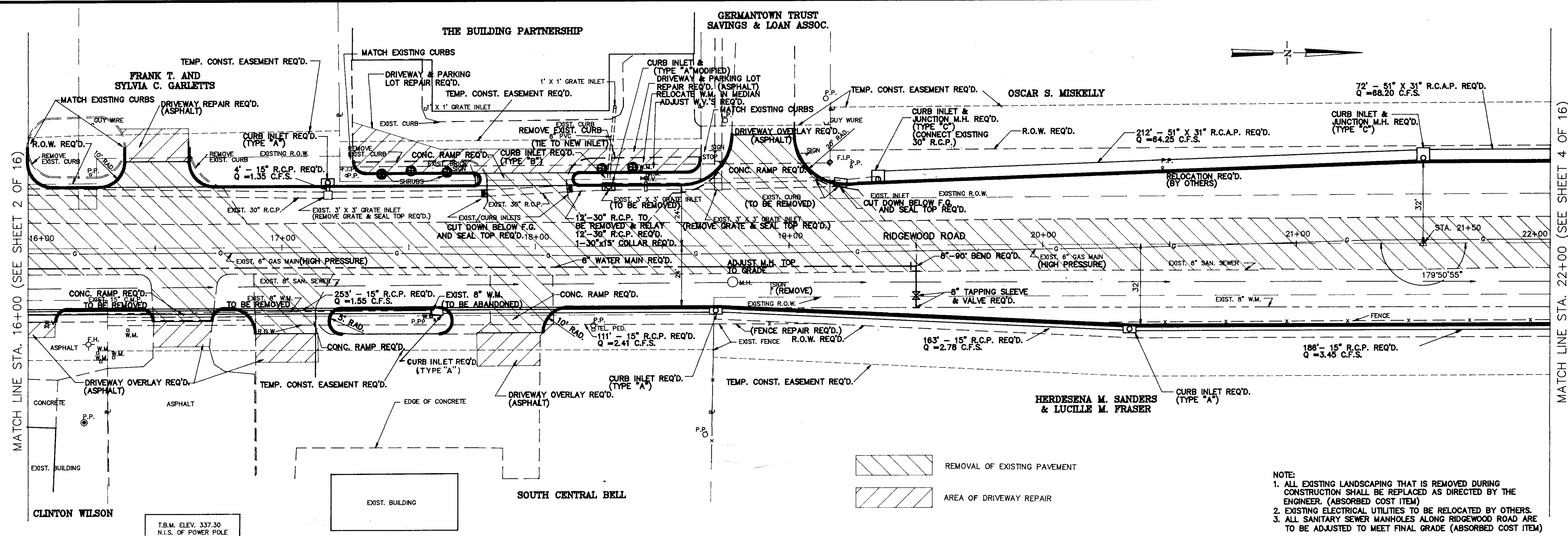
Jackson / Brandon / Pascagoula, Mississippi

DAR
2/20/93
PWP-01825

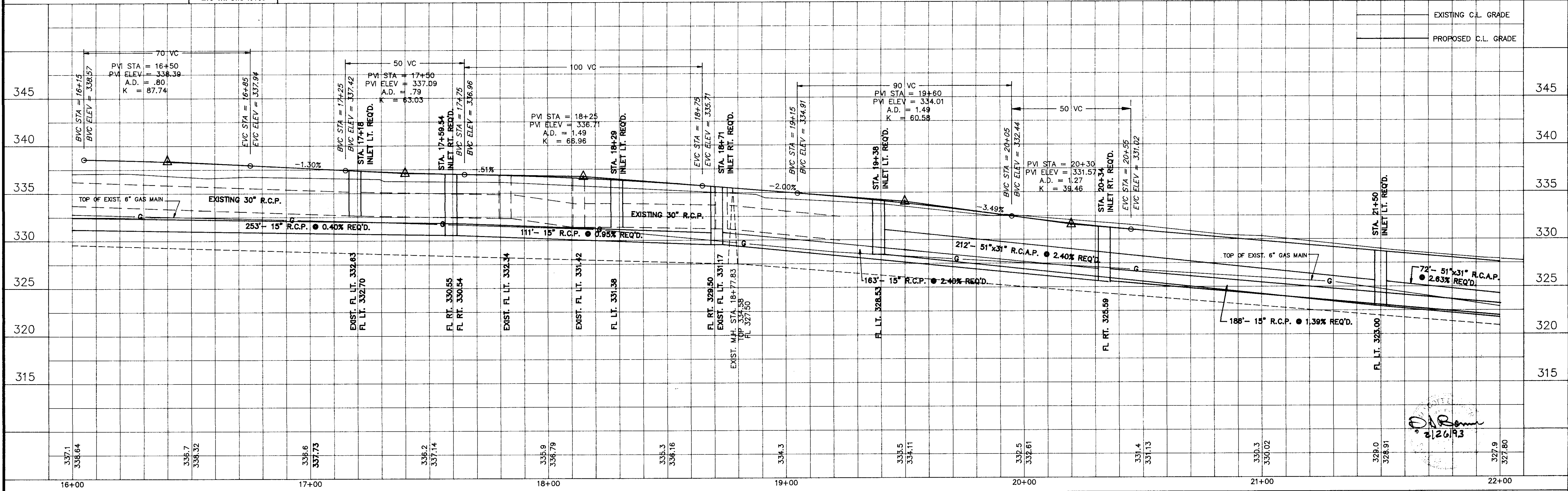


MATCH LINE STA. 16+00 (SEE SHEET 2 OF 16)

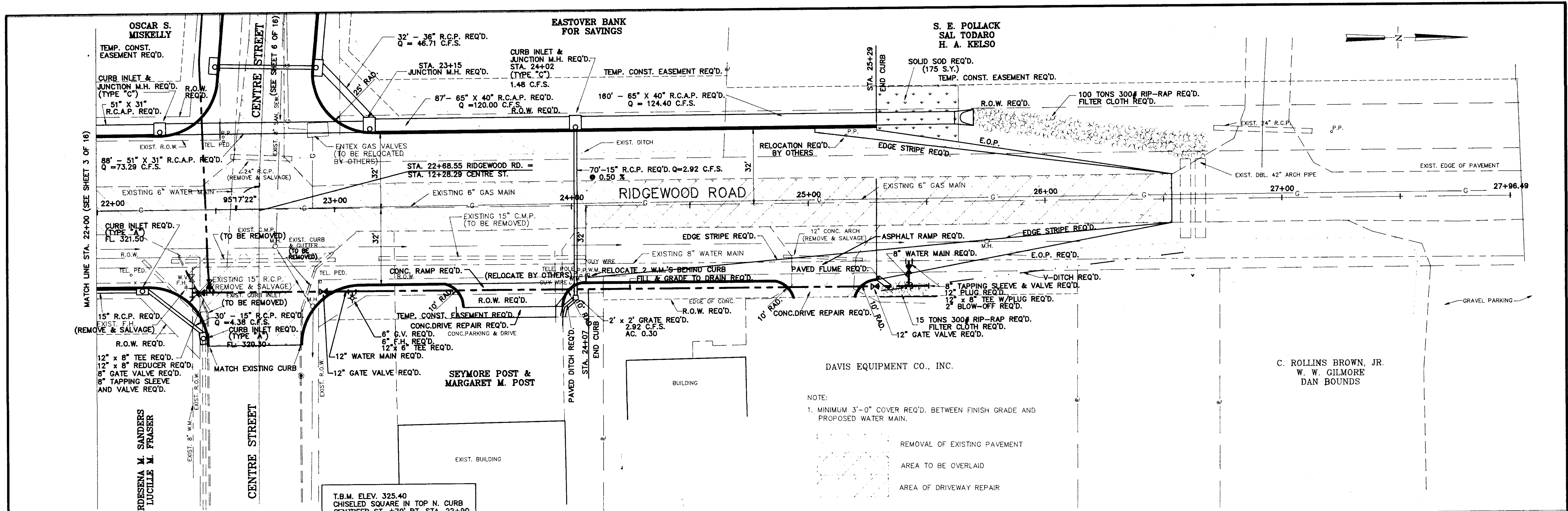
MATCH LINE STA. 22+00 (SEE SHEET 4 OF 16)



- NOTE:
1. ALL EXISTING LANDSCAPING THAT IS REMOVED DURING CONSTRUCTION SHALL BE REPLACED AS DIRECTED BY THE ENGINEER. (ABSORBED COST ITEM)
 2. EXISTING ELECTRICAL UTILITIES TO BE RELOCATED BY OTHERS.
 3. ALL SANITARY SEWER MANHOLES ALONG RIDGEWOOD ROAD ARE TO BE ADJUSTED TO MEET FINAL GRADE (ABSORBED COST ITEM)

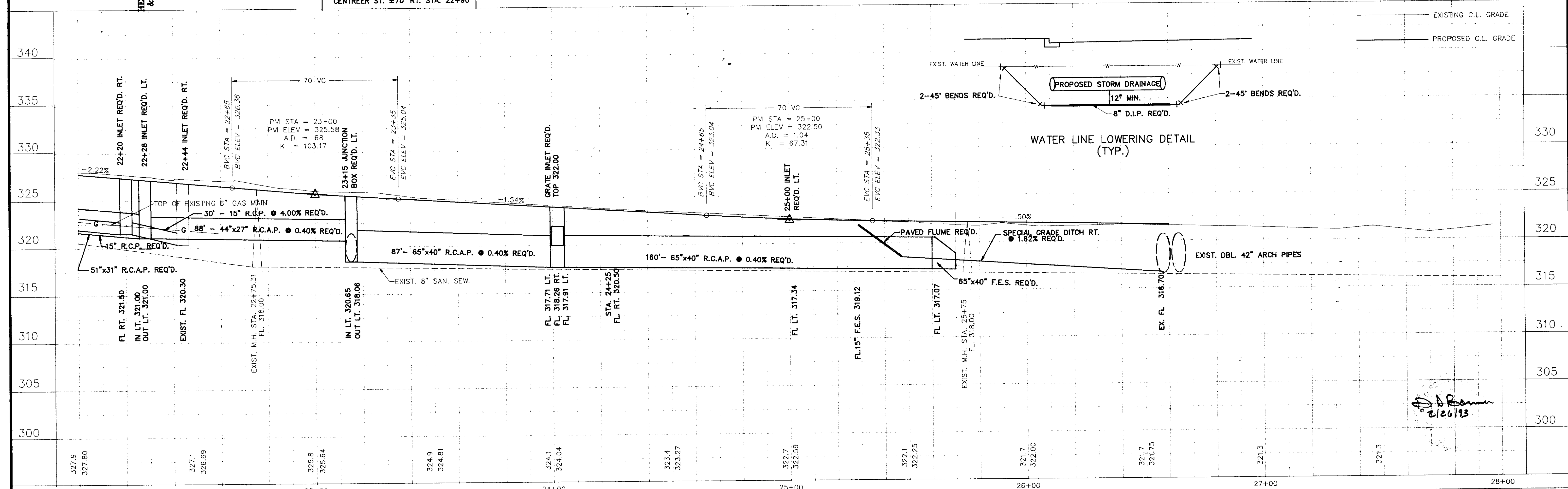


NO.	DATE	REVISIONS	DESIGNED	DATE	WAGGONER ENGINEERING INC. CONSULTING ENGINEERS		RIDGEWOOD ROAD		ACAD PATH ROUTE
			M.A.L.	FEB. 1992	JACKSON, MISSISSIPPI				C:\P\85744\PLAT2
			DRAWN	SCALE					W.E.I. JOB NO.
			M.A.L.	1" = 20' HORT.					85-744
			BY	1" = 5' VERT.					SHEET NO.
									3 OF 16



NOTE:
1. MINIMUM 3'-0" COVER REQ'D. BETWEEN FINISH GRADE AND PROPOSED WATER MAIN.

REMOVAL OF EXISTING PAVEMENT
AREA TO BE OVERLAID
AREA OF DRIVEWAY REPAIR

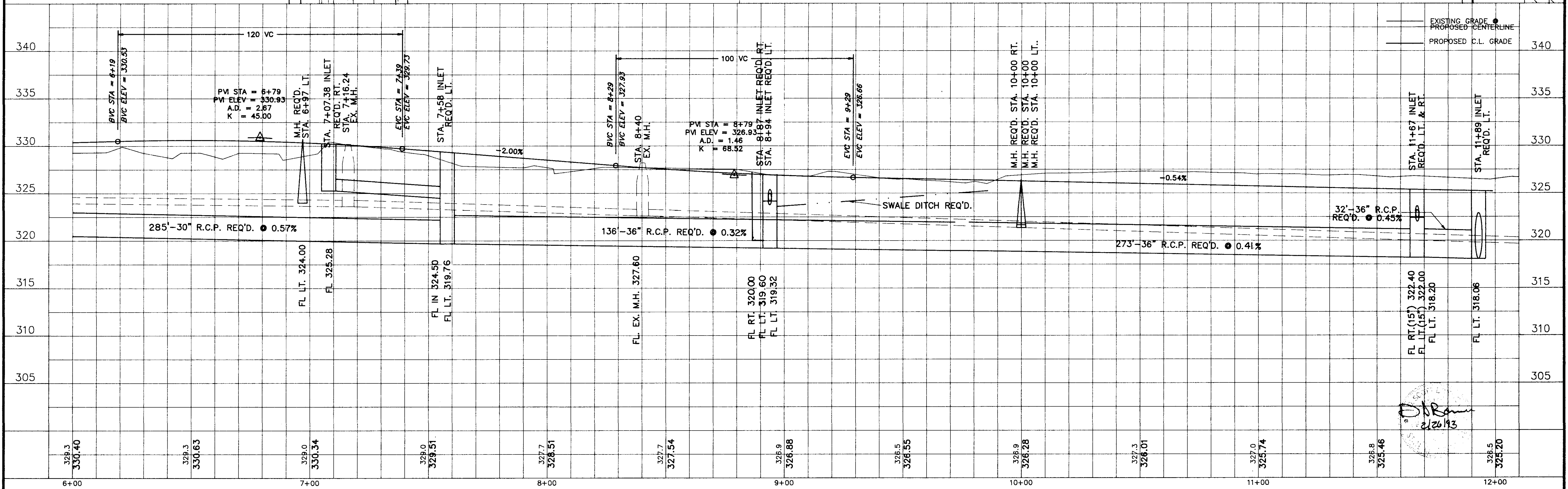
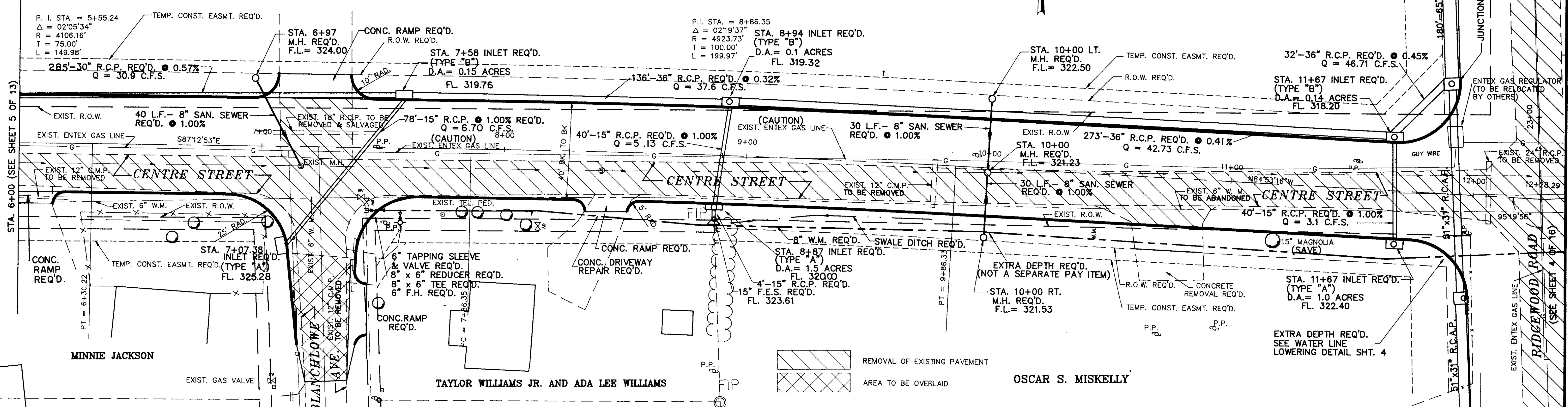


D. D. Roman
2/26/93

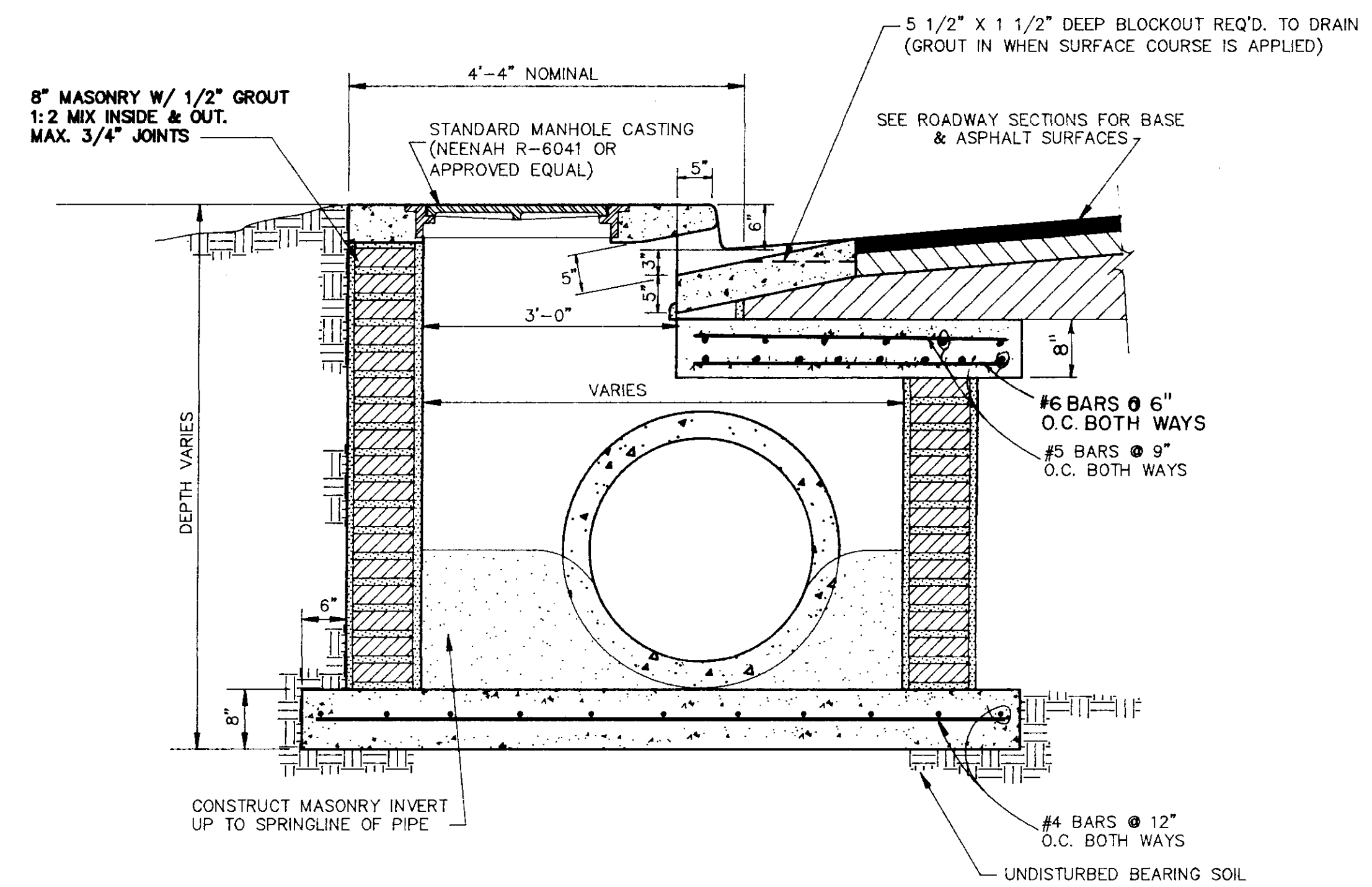
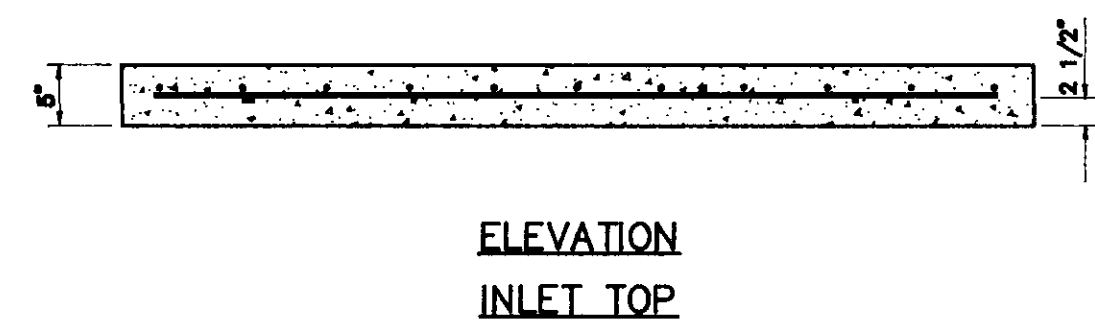
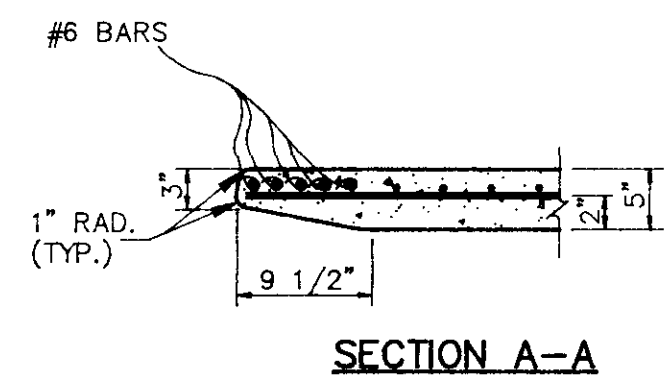
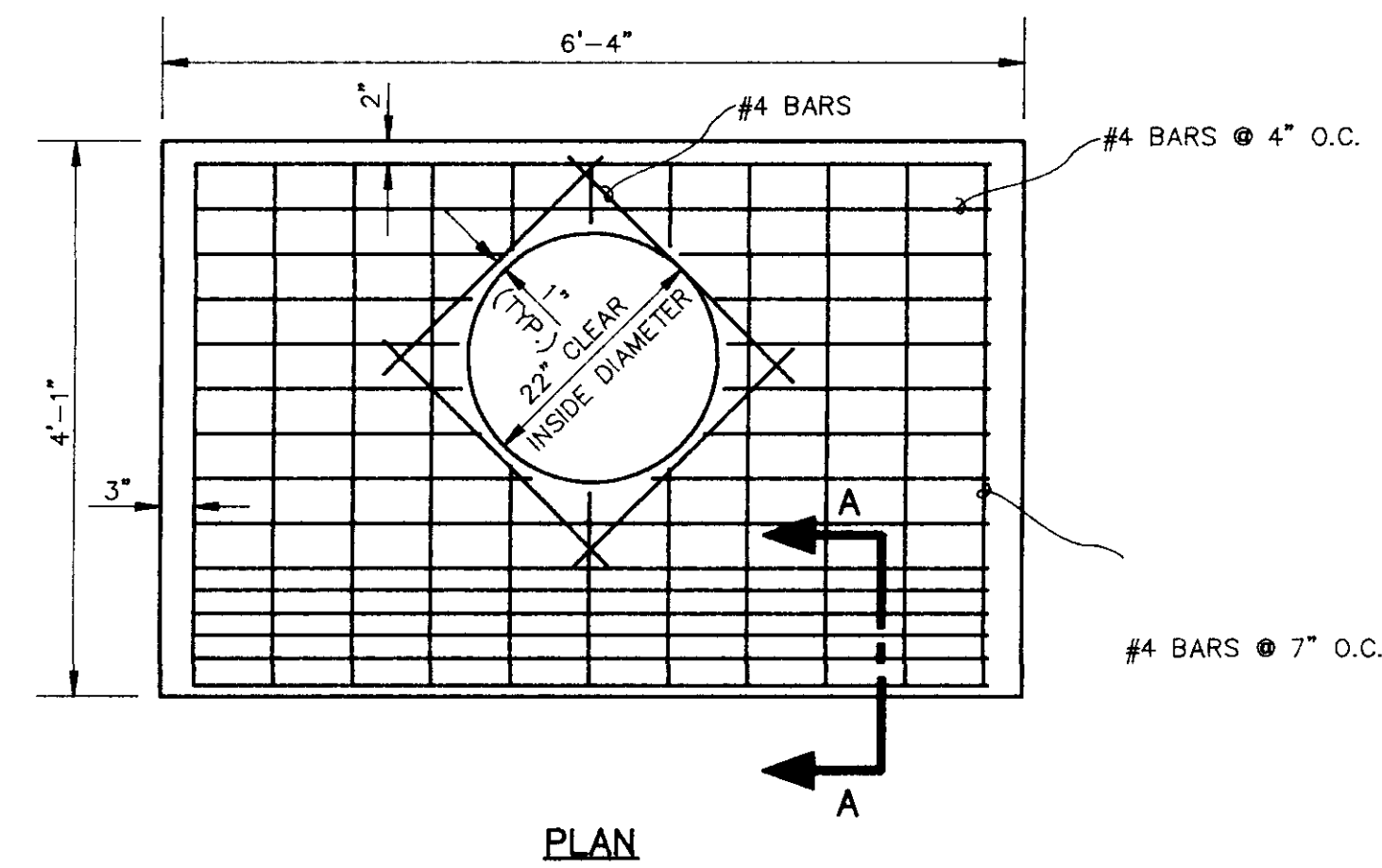
NO.	DATE	REVISIONS	BY	DESIGNED M.A.L.	DATE FEB. 1992	SCALE 1"=20' HORT. 1"=5' VERT.	WAGGONER ENGINEERING INC. CONSULTING ENGINEERS JACKSON, MISSISSIPPI	RIDGEWOOD ROAD	ACAD PATH ROUTE C:\P\85744\PLAT3	W.E.I. JOB NO. 85-744	SHEET NO. 4 OF 16
-----	------	-----------	----	--------------------	-------------------	--------------------------------------	--	----------------	-------------------------------------	--------------------------	----------------------

EASTOVER BANK FOR SAVINGS

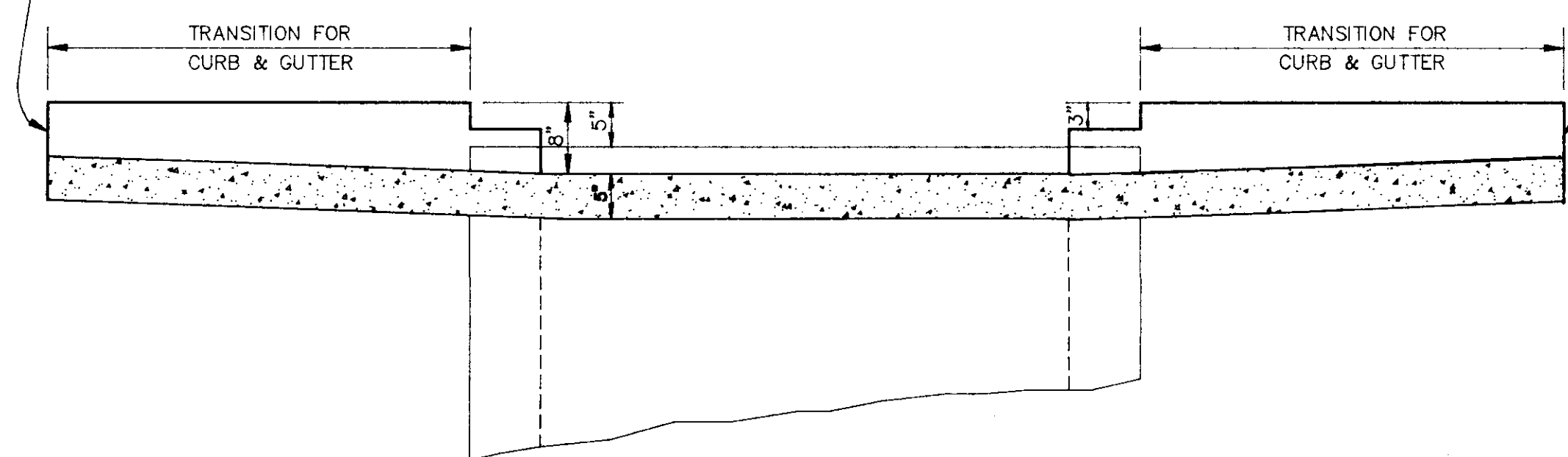
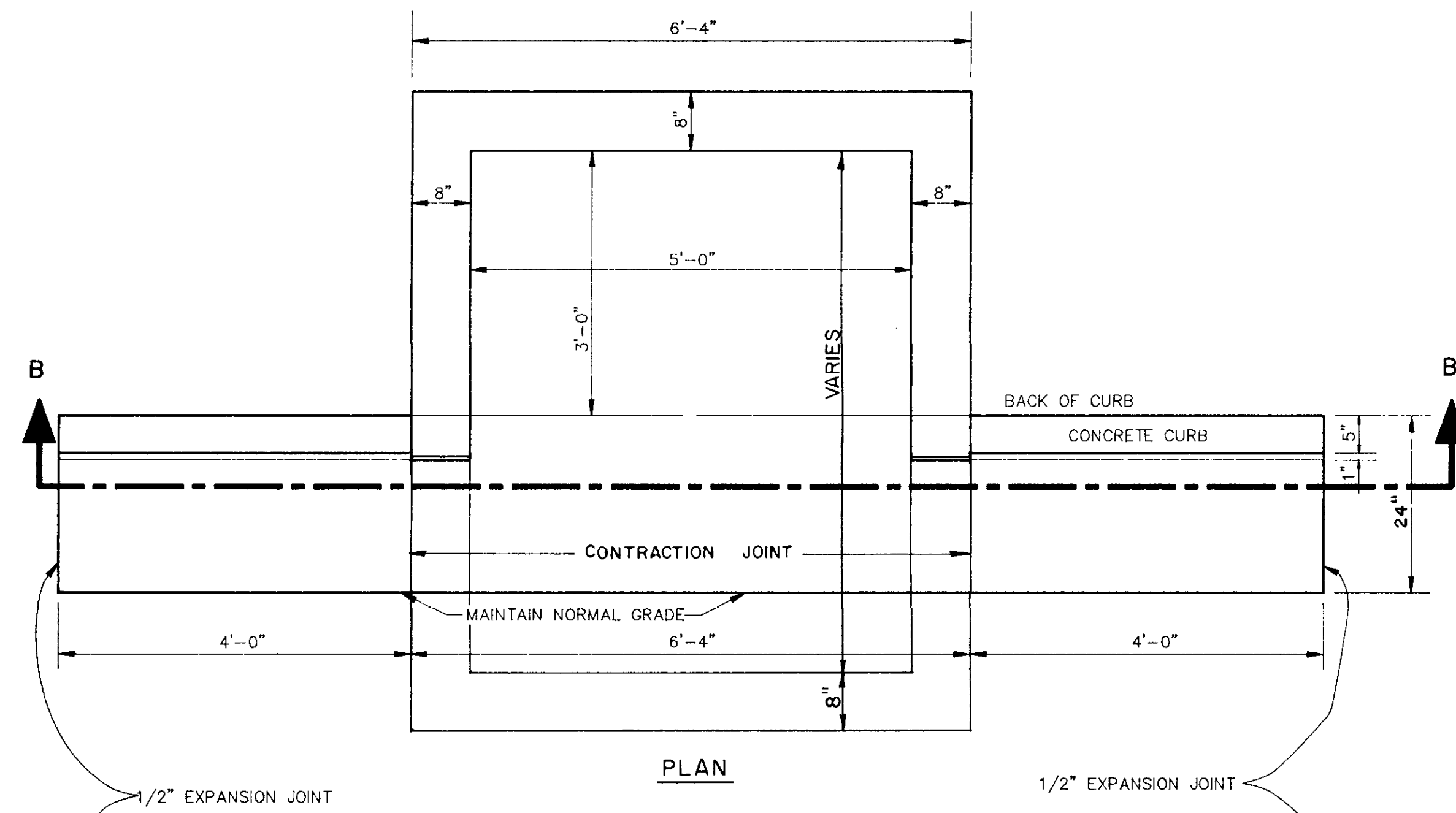
- NOTES:
 1. LIMITS OF EXISTING CONCRETE PAVEMENT TO BE REMOVED - STA. 0+83 TO STA. 3+26
 2. EXISTING ELECTRICAL UTILITIES TO BE RELOCATED BY OTHERS.
 3. ALL SAN. SEWER MANHOLES ALONG CENTRE STREET ARE TO BE ADJUSTED TO MEET FINAL GRADE (ABSORBED COST ITEM)
 4. MINIMUM 3'-0" COVER REQ'D. BETWEEN FINISH GRADE AND PROPOSED WATER MAIN.



NO.	DATE	REVISIONS	BY	DESIGNED M.A.L.	DATE 1-15-92	WAGNER ENGINEERING INC. CONSULTING ENGINEERS JACKSON, MISSISSIPPI	CITY OF RIDGELAND CENTRE STREET RECONSTRUCTION	ACAD PATH ROUTE C:\P\85-744\DATA1	W.E.I. JOB NO. 85744	SHEET NO. 6 OF 16
-----	------	-----------	----	--------------------	-----------------	--	---	--------------------------------------	-------------------------	----------------------



TYPE "A" MODIFIED INLET

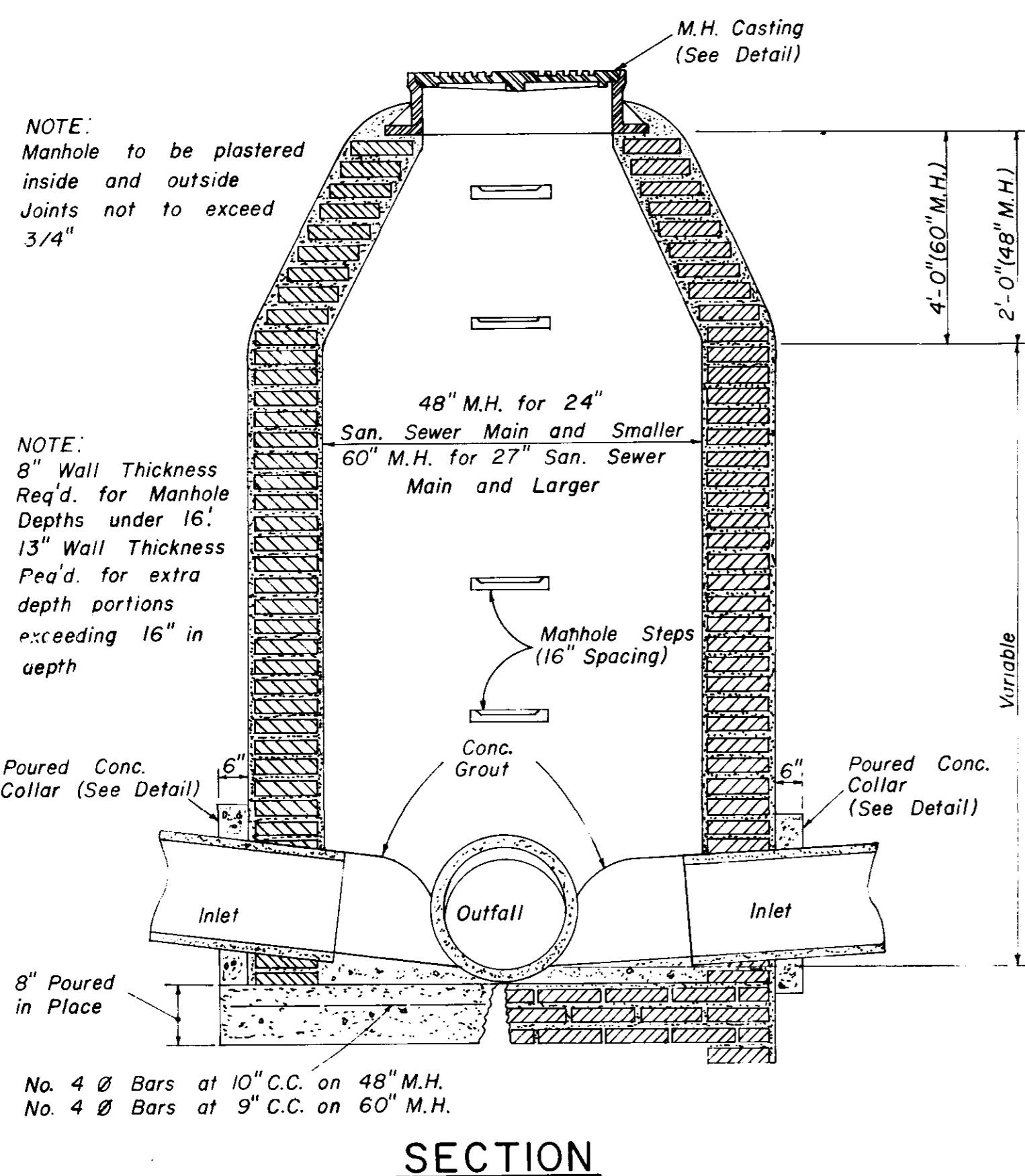


CITY OF RIDGELAND
MODIFIED INLET DETAIL
STANDARD STORM SEWER

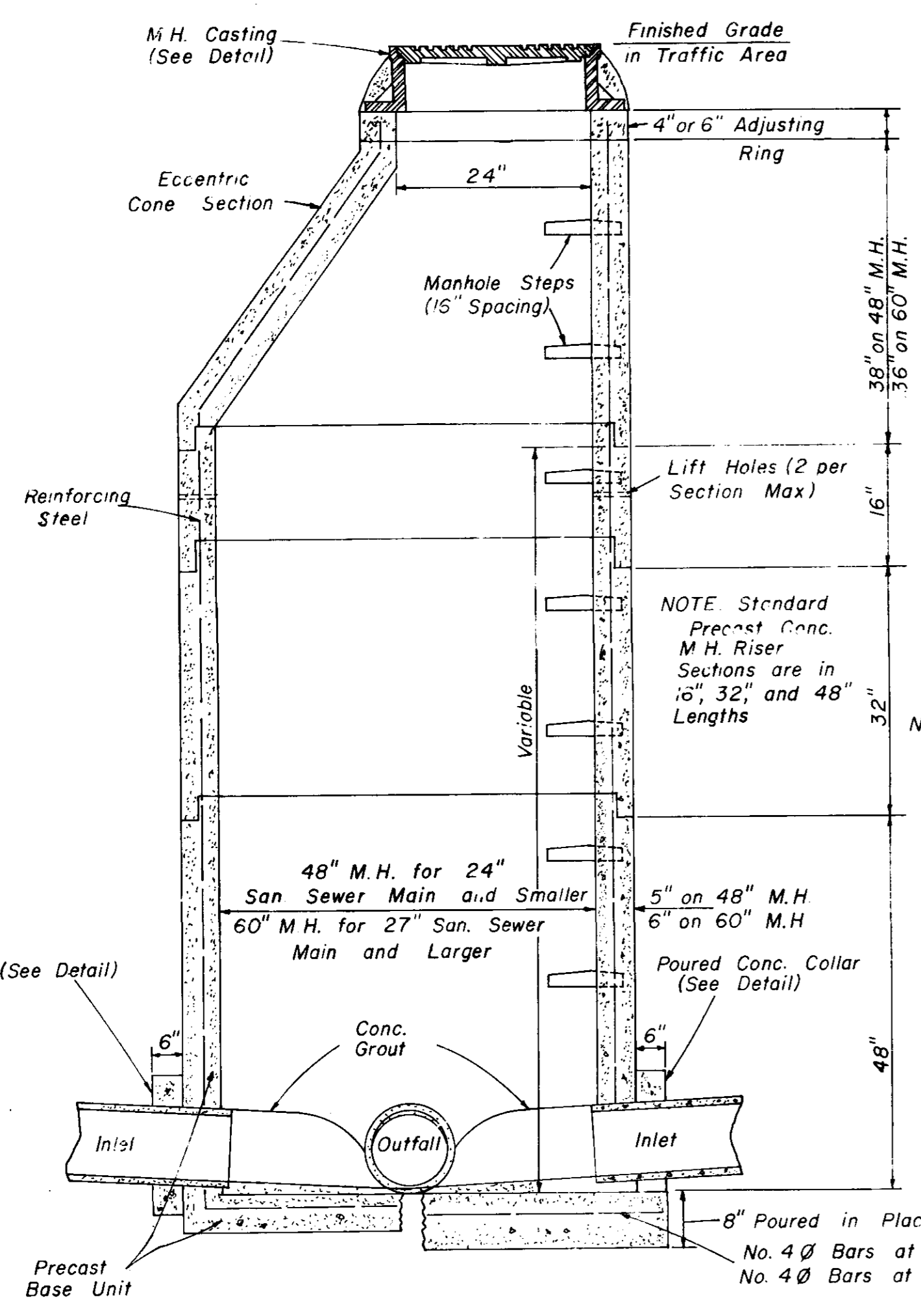
WAGGONER ENGINEERING, INC.
Consulting Engineers - Jackson, Mississippi

DRAWN BY: C.R.H.	DATE: FEB. 93	SHEET NUMBER
REVIEWED BY: T.C.	SCALE: 3/4"=1'-0"	15 OF 16

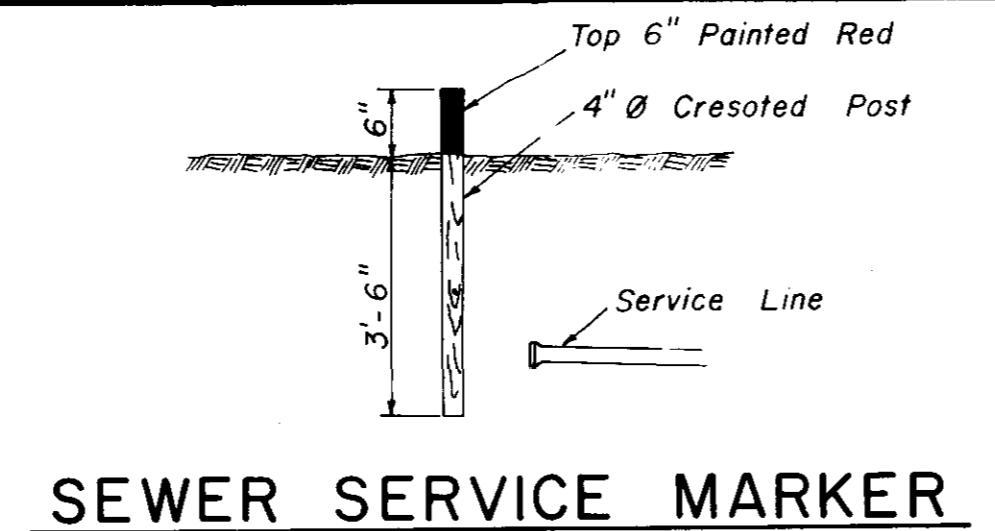
C:\85744\MODINLET



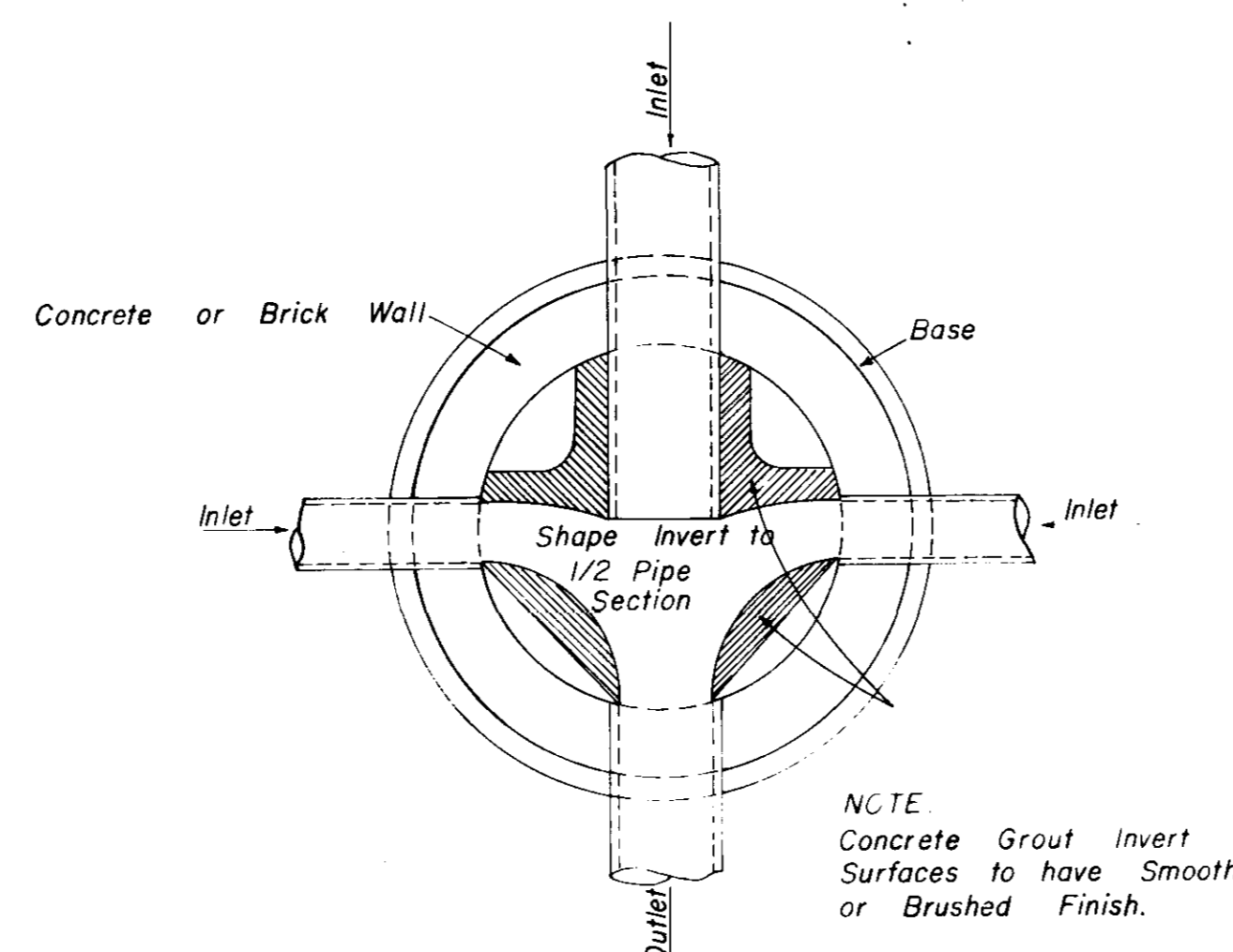
**SECTION
STANDARD BRICK MANHOLE**



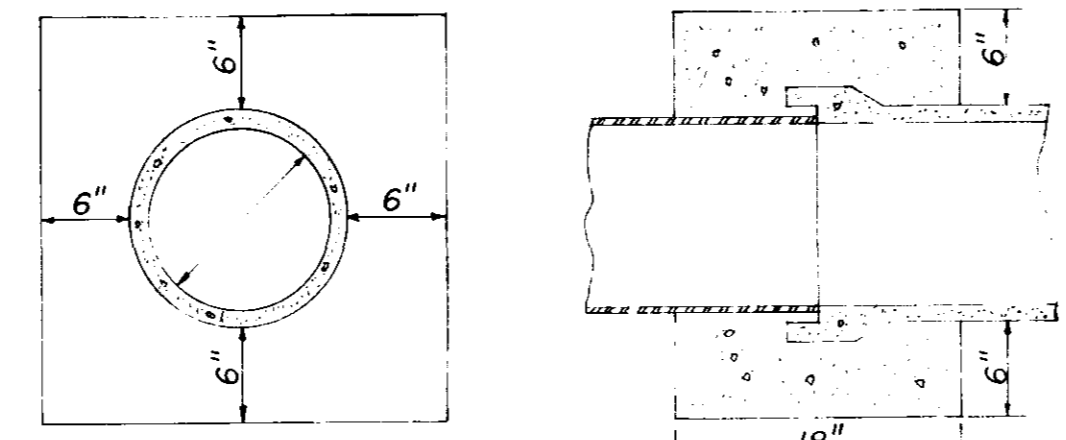
**SECTION
PRECAST CONCRETE MANHOLE**



SEWER SERVICE MARKER



**PLAN OF MANHOLE
FLOW CHANNELS**

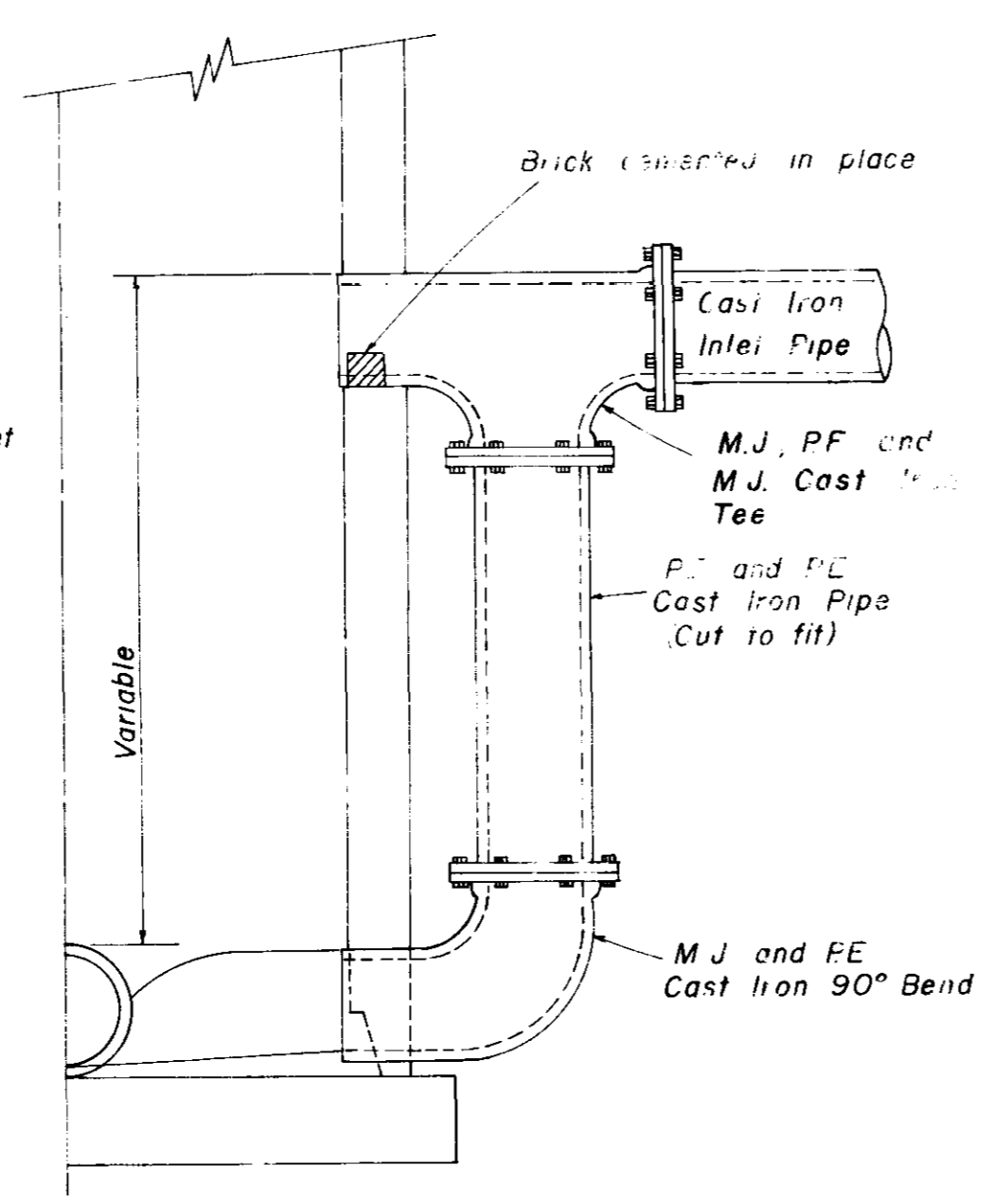


**ELEVATION SECTION
CONCRETE COLLAR DETAILS**

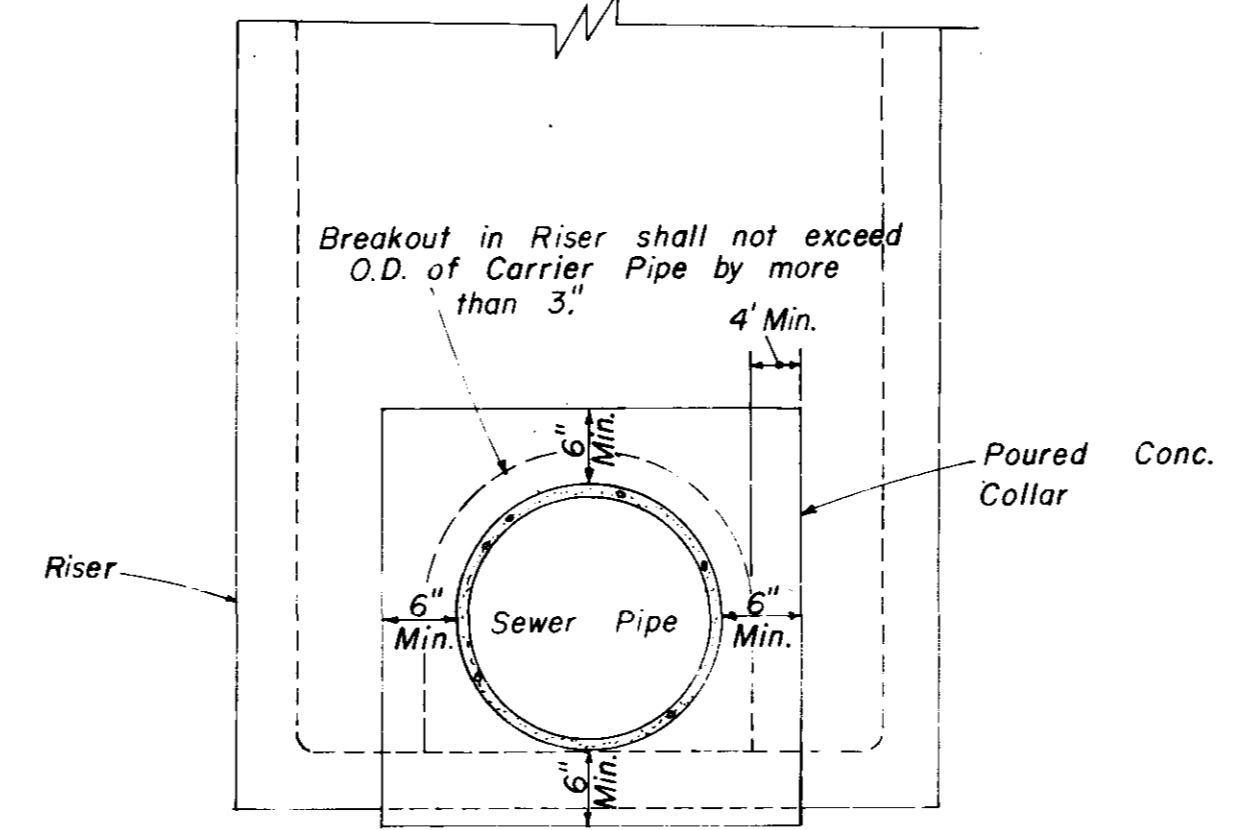
NOTE: All Lift Holes on each Section shall be sealed Watertight with non-shrink Grout inside and outside.

NOTE: Standard Precast Conc. M.H. Riser Sections are in 16", 32" and 48" Lengths.

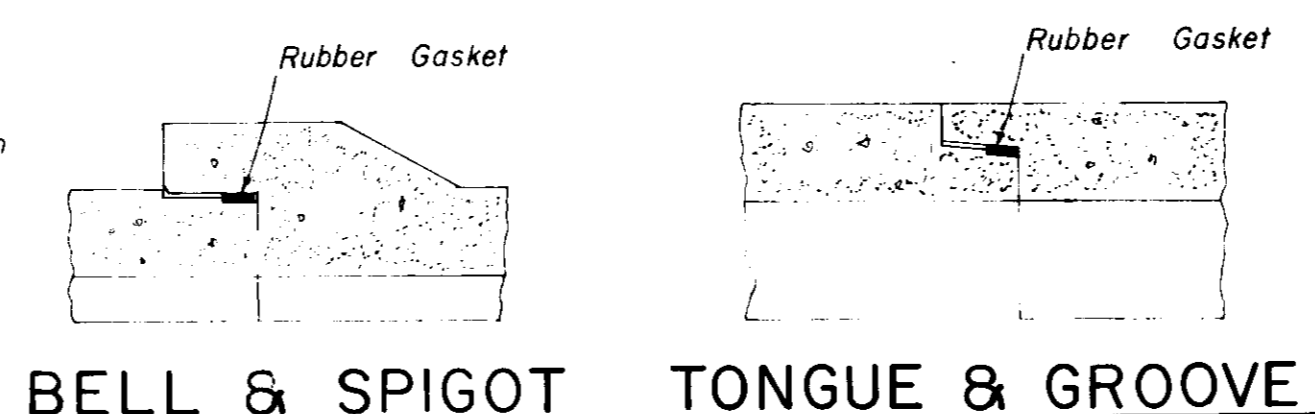
NOTE: All Manhole Joints to be Rubber Gasket.



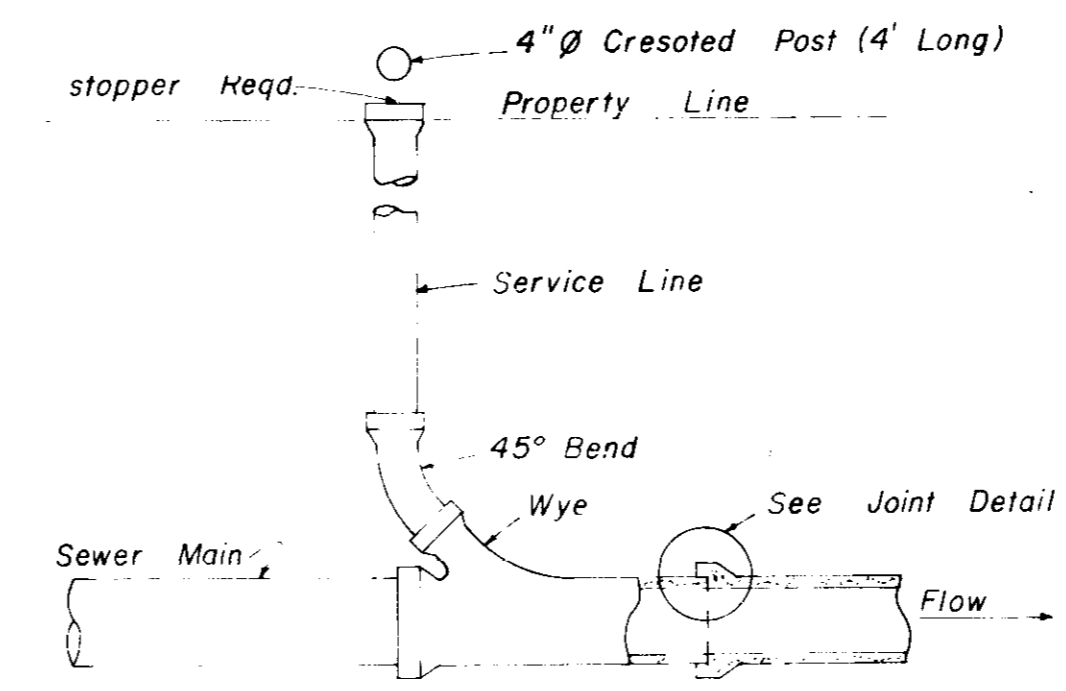
**HALF SECTION
MANHOLE WITH DROP CONNECTION**



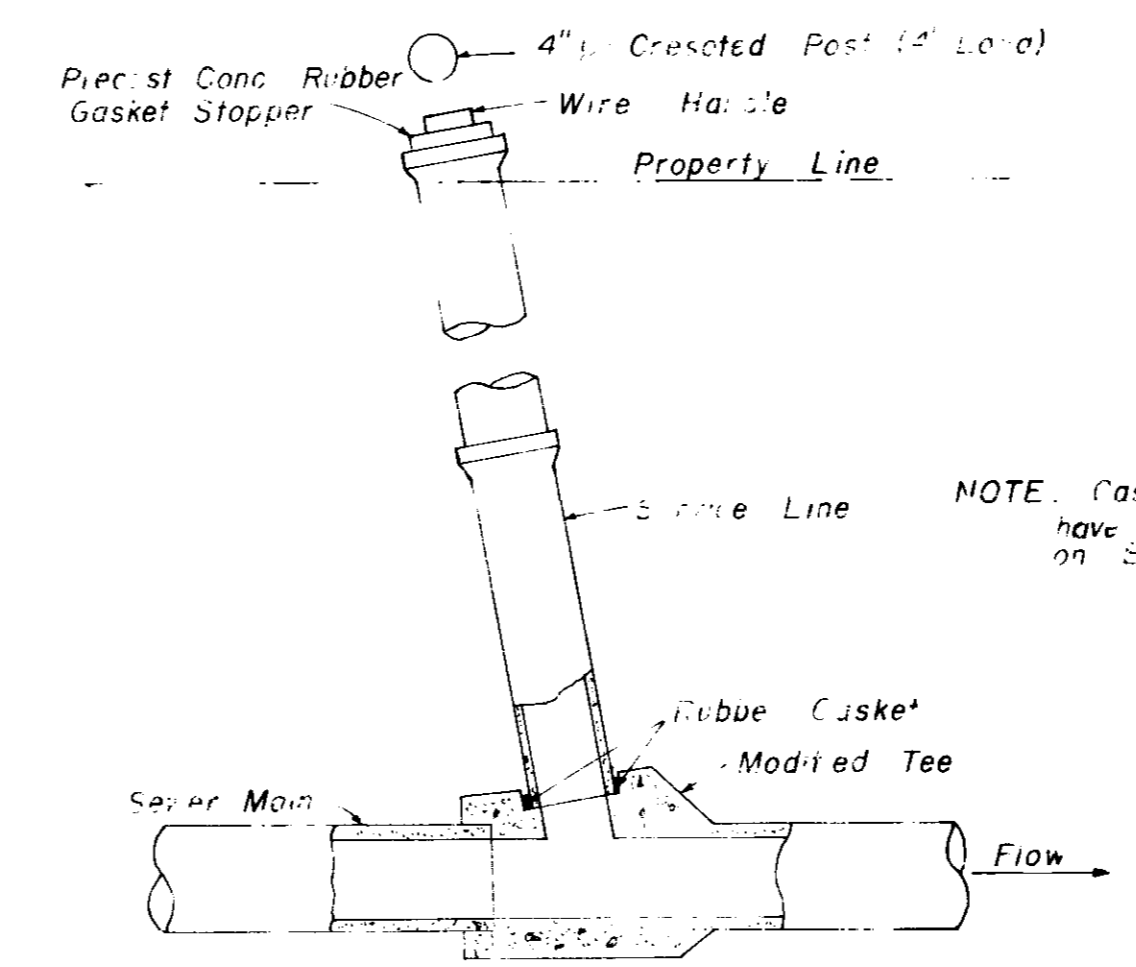
**ELEVATION
CONCRETE COLLAR AT
MANHOLE CONNECTION**



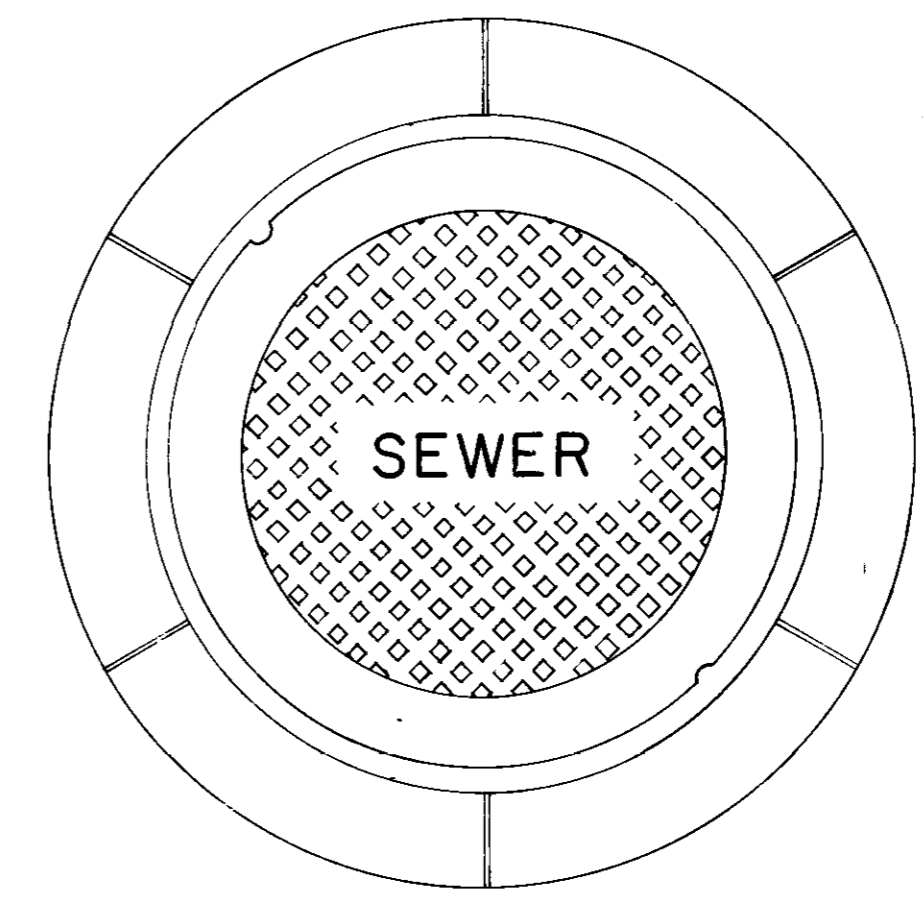
**BELL & SPIGOT TONGUE & GROOVE
JOINT DETAILS**



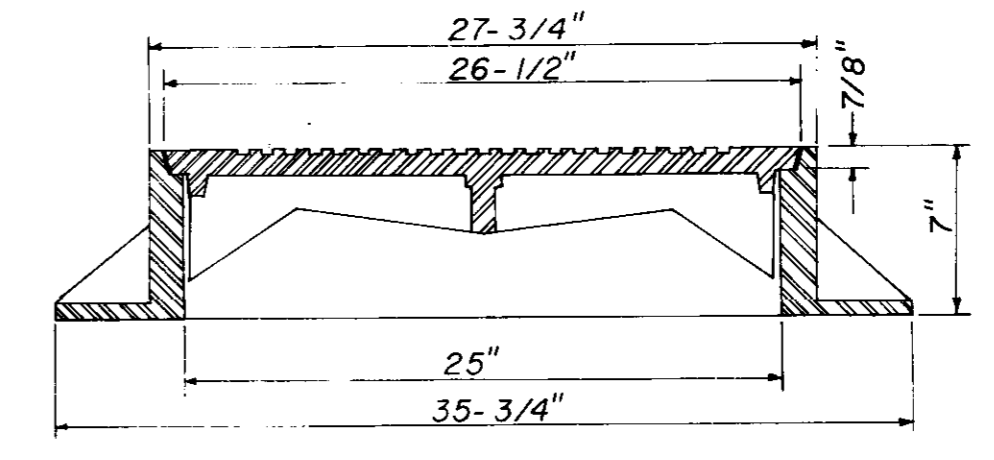
**TYPICAL SERVICE TO PROPERTY LINE
WITH WYE JOINT**



**TYPICAL SERVICE TO PROPERTY LINE
WITH MODIFIED TEE JOINT**

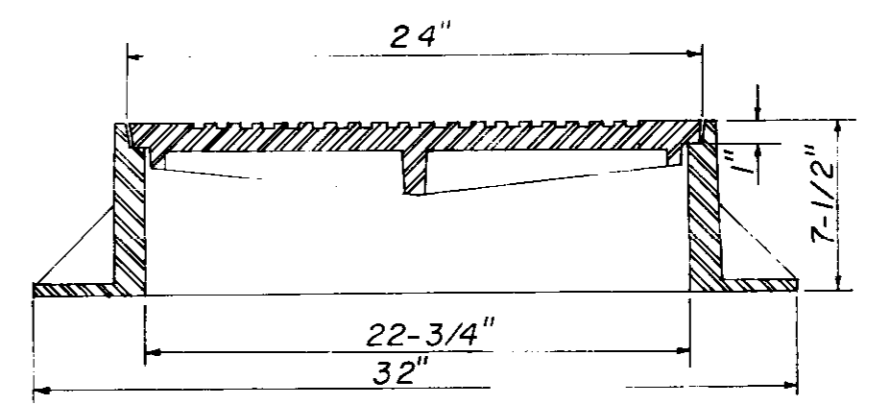


**PLAN
MANHOLE CASTING**



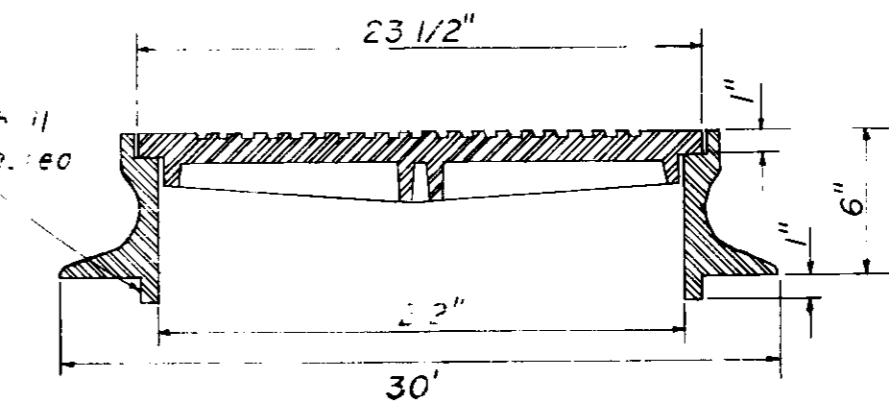
**SECTION
TYPE \"/>**

NOTE: 1. Use Type "A" Manhole Casting in Street R.O.W.
2. Use Harper No. 2, City of Jackson Standard (420 lbs.) or Vulcan No. VM-15, City of Jackson Standard (420 lbs.)



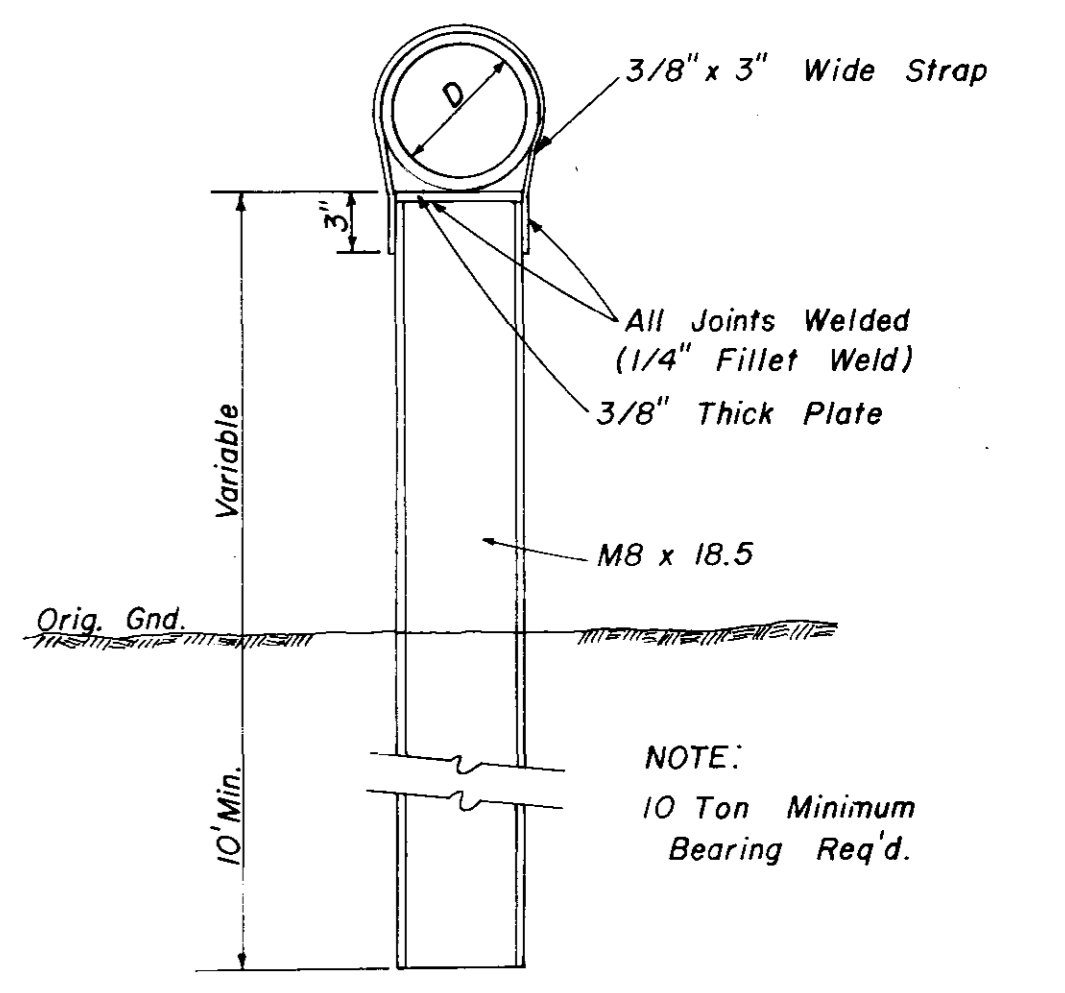
**SECTION
TYPE \"/>**

NOTE: 1. Use Type "B" Manhole Casting for any Manhole not in a Street R.O.W.
2. Use Harper No. 1 (M.S.P.E. Standard) Light Weight (330 lbs.) or Vulcan No. VM-17 (300 lbs.) or Opelika Foundry No. C-2-1 (325 lbs.)

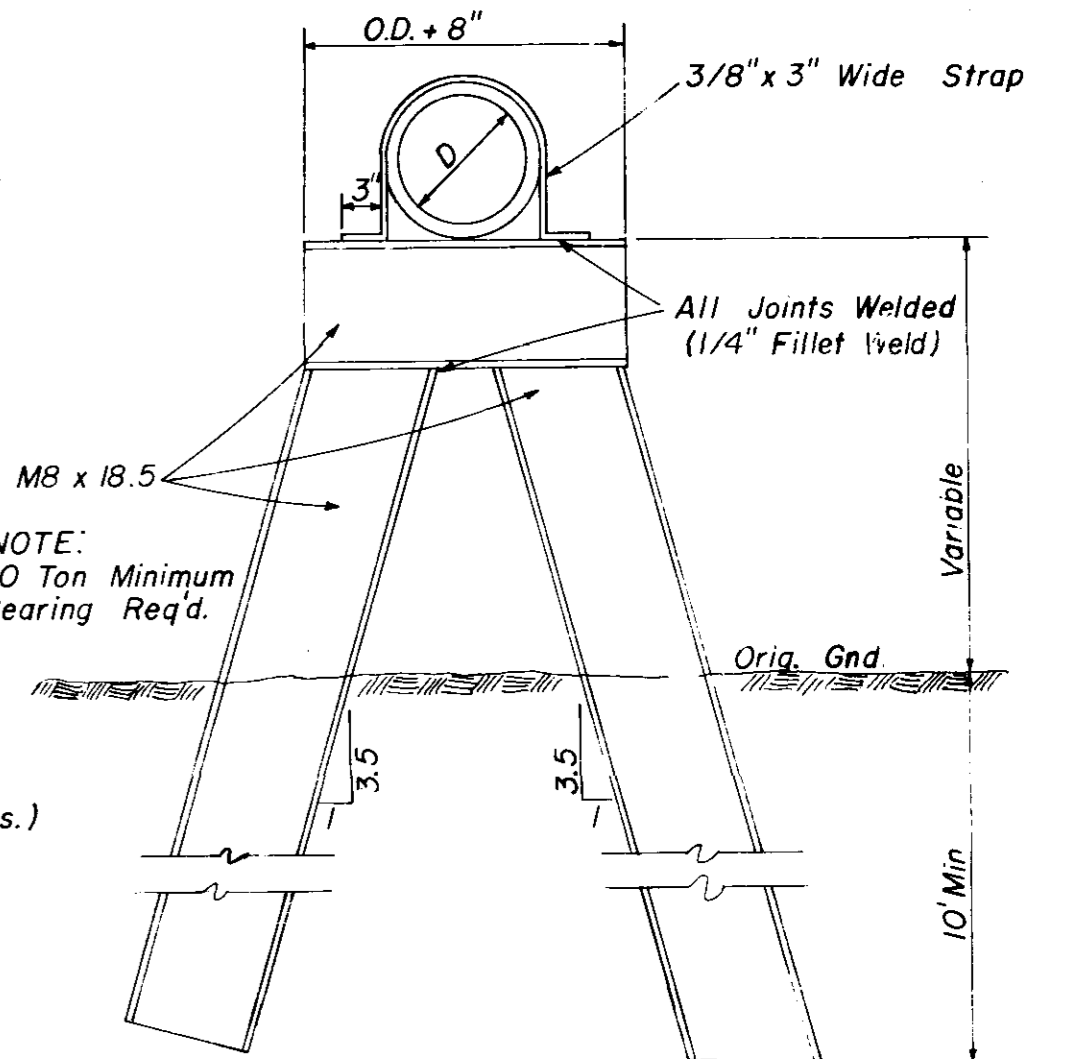


**SECTION
TYPE \"/>**

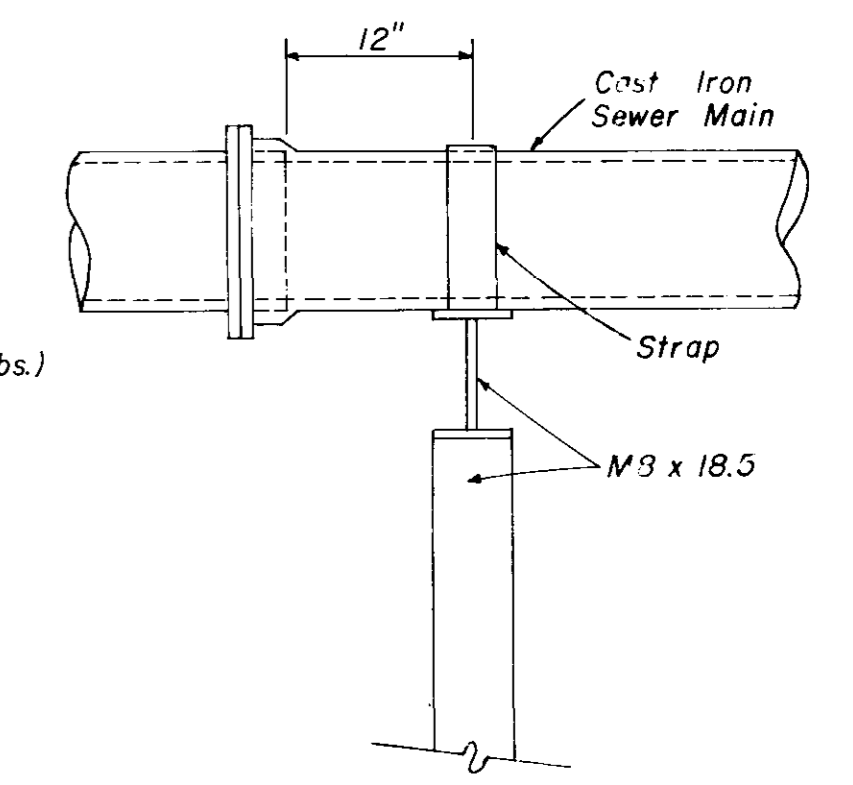
NOTE: 1. Use Type "C" Manhole Casting for Precast Manhole not in a Street R.O.W.
2. Use Harper No. 8 (330 lbs.) or Neenan No. R-1779 (300 lbs.) or Vulcan No. VM-7 (330 lbs.)



**DETAIL
TYPE \"/>**



**DETAIL
TYPE \"/>**



**SIDE ELEVATION
TYPE \"/>**

**SANITARY SEWER
STANDARD DETAILS**