

**DETAILED PLANS**  
**PAVING AND DRAINAGE**  
**CONTRACT NO.**  
**CITY OF RIDGELAND, MISSISSIPPI**

MAYOR

HITE B. WOLCOTT

BOARD OF ALDERMEN

JACK MARTIN

RAYMOND Mc CLURE

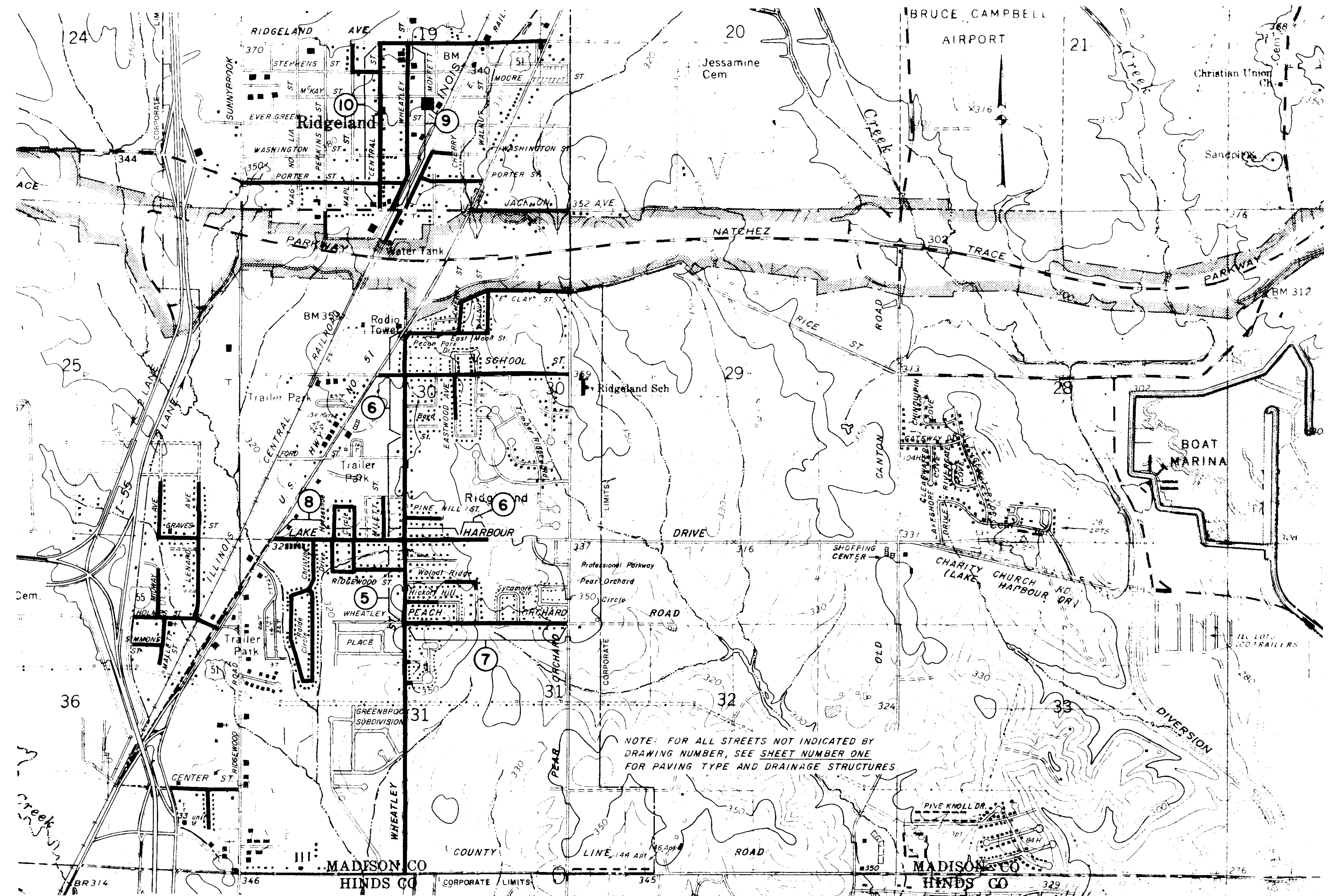
THOMAS MONDAY

DONALD LINDSLEY

HORACE ROSS

CITY ATTORNEY

BOB MONTGOMERY



MADISON CO  
 HINDS CO  
 BARTH & ASSOCIATES, INC.  
 CONSULTING ENGINEERS  
 JACKSON, MISSISSIPPI

**PWP-1602**



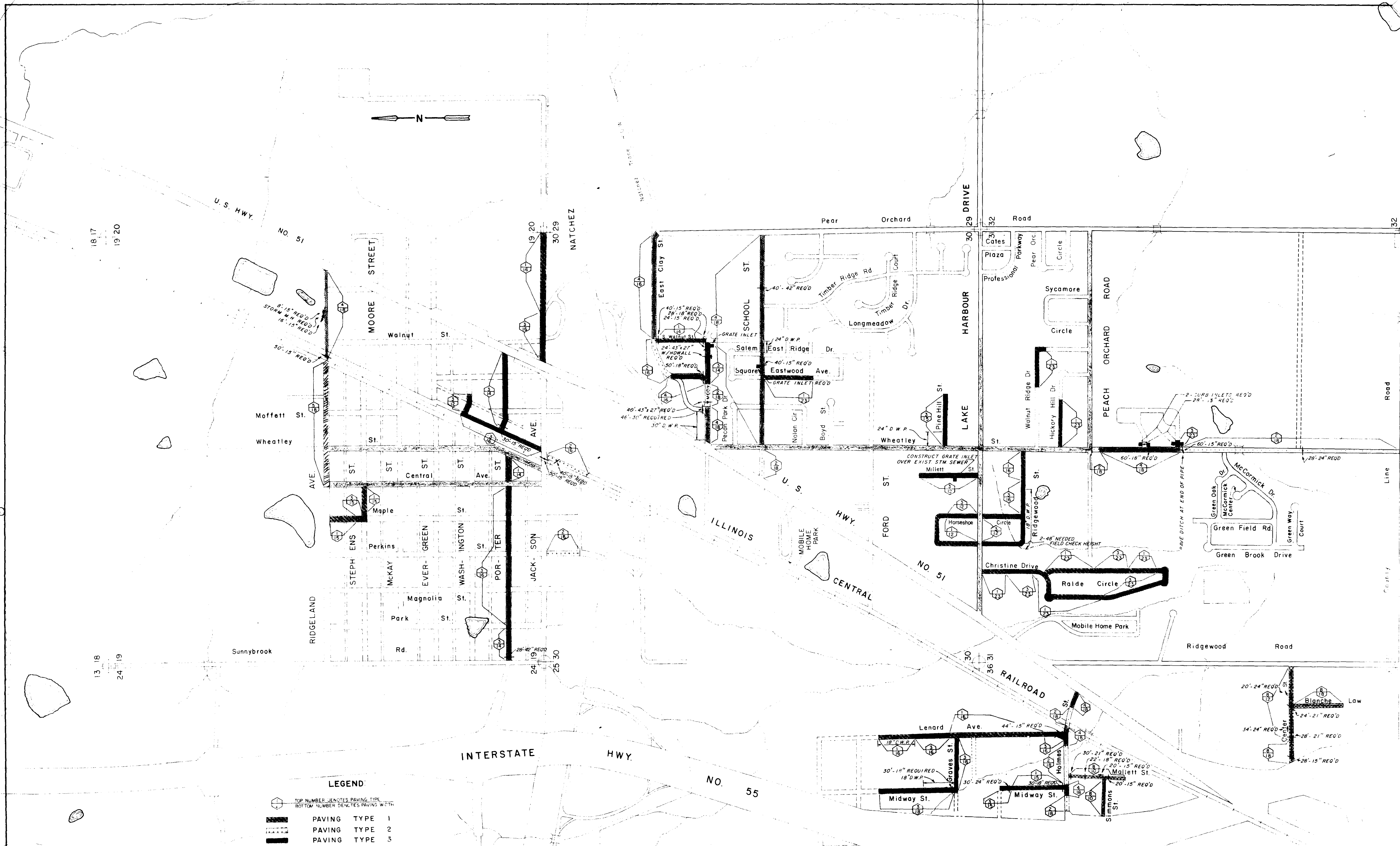
**LEGEND**

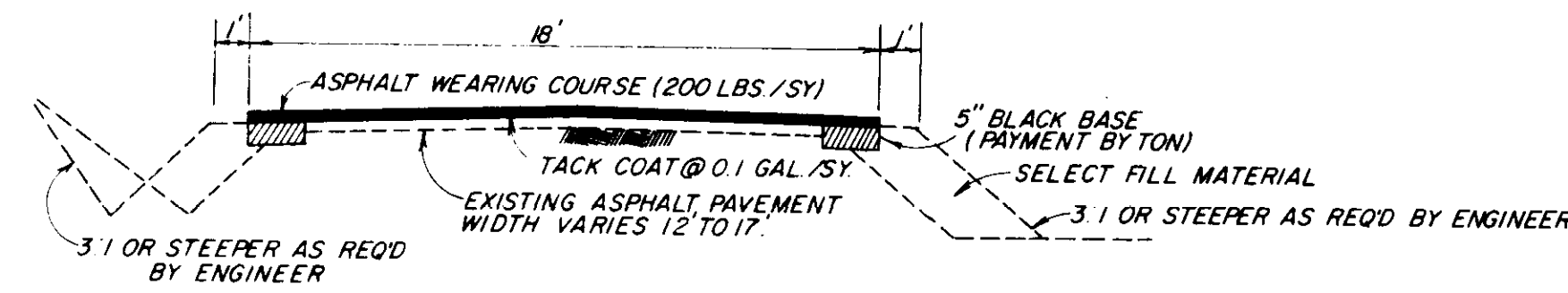
|  |  |
|--|--|
|  | TOP NUMBER DENOTES PAVING TYPE<br>BOTTOM NUMBER DENOTES PAVING WIDTH |
|  | PAVING TYPE 1  |
|  | PAVING TYPE 2  |
|  | PAVING TYPE 3  |
|  | PAVING TYPE 4  |
|  | PAVING TYPE 5  |
|  | PAVING TYPE 6 (PLAN & PROFILE SHEETS)                                |
|  | PAVING TYPE 7  |
|  | PAVING TYPE 8  |
|  | PLAN SHEET COVERAGE 9  |
|  | DRIVEWAY PIPE  |
|  | DRAIN PIPE REQUIRED  |

NOTES: 1. SEE PLAN SHEET NO. 2 FOR PAVING TYPE DESCRIPTIONS. 2. ALL DRIVEWAY PIPES 18" UNLESS OTHERWISE INDICATED.

**PROPOSED PAVING**

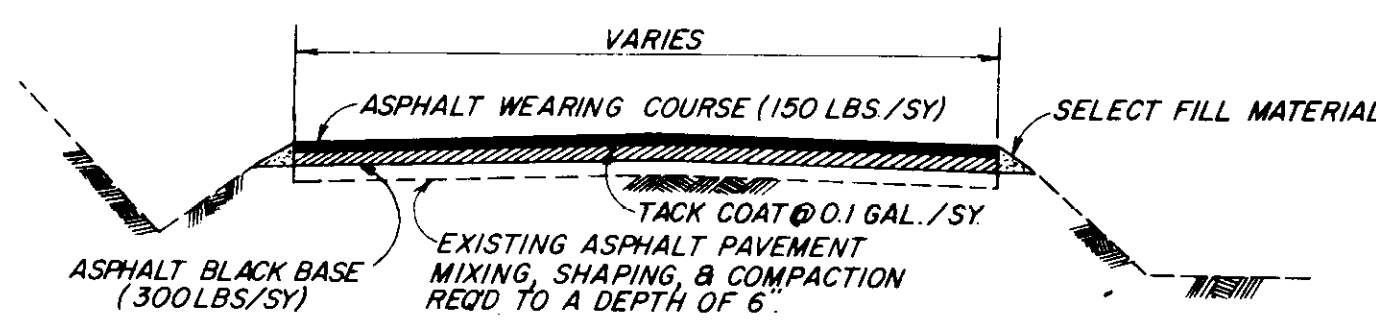
|   |           |             |        |          |                         |
|---|-----------|-------------|--------|----------|-------------------------|
| SCALE   | 1" = 500' | DESIGNED BY | T.S.B. | DRAWN BY | S.M.                    |
| DATE  | 2-27-79   | APPROVED BY | T.S.B. | JOB NO.  |                         |
| <b>RIDGELAND, MISSISSIPPI</b>   |           |             |        |          |                         |
| <b>BARTH &amp; ASSOCIATES, INC.</b><br>CONSULTING ENGINEERS<br>JACKSON, MISSISSIPPI |           |             |        |          |                         |
|   |           |             |        |          | DRAWING NO.<br><b>1</b> |





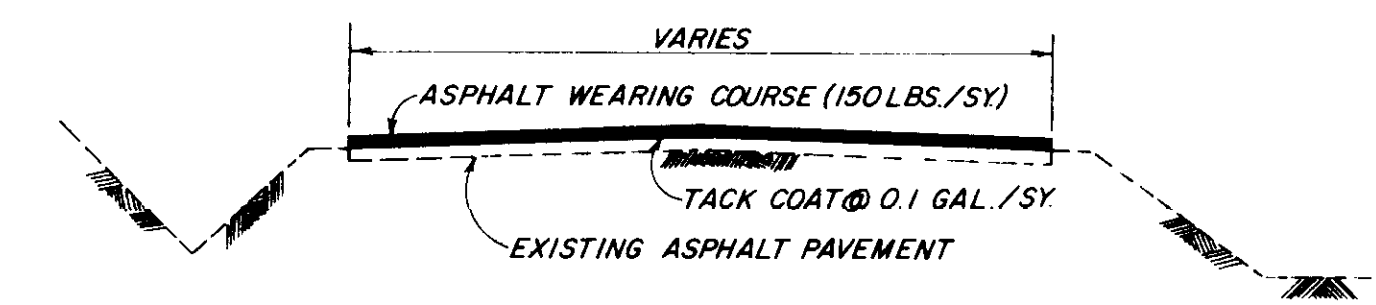
NOTE: CONSTRUCT SHOULDERS AND COMPACT TO 95% DENSITY WIDEN PAVEMENT TO A WIDTH OF 18' BY PLACING AND COMPACTING ASPHALT BLACK BASE TO A DEPTH OF 5" ALONG THE EDGES OF THE EXISTING PAVEMENT. REPAIR POTHOLES BY TACK-COATING, FILLING WITH ASPHALT BLACK BASE, AND THOROUGHLY COMPACTING TO CONFORM TO SURROUNDING SURFACES. UNDERCUT ALL FAILED AREAS THAT SHOW VISIBLE SIGNS OF YIELDING UNDER TRAFFIC OR EQUIPMENT TO A DEPTH DIRECTED BY THE ENGINEER. BACKFILL WITH SELECT FILL MATERIAL AND 5" ASPHALT BLACK BASE. COMPACT BOTH SELECT FILL MATERIAL AND ASPHALT BLACK BASE TO 95% DENSITY. WHERE THE EXISTING PAVEMENT IS IRREGULAR, IT SHALL BE BROUGHT TO THE PROPER CROSS SECTION AND GRADE BY A LEVELING COURSE PLACED ON THE ROADWAY AND SPREAD WITH A MOTOR GRADER. THE LEVELING COURSE MATERIAL SHALL BE ROLLED UNTIL IT IS COMPACTED AND IN CONFORMITY WITH THE SURROUNDING SURFACE.

**PAVEMENT TYPE 6**



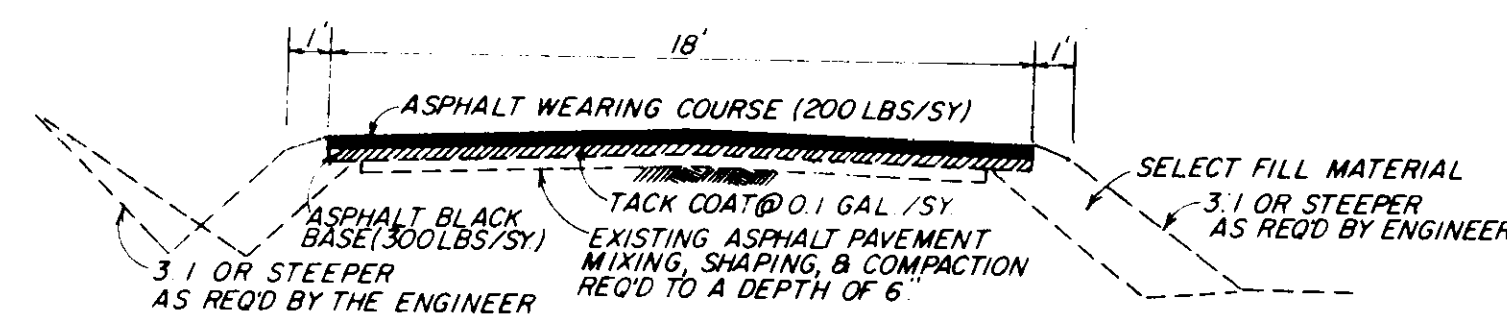
NOTE: SCARIFY, PULVERIZE, AND RESHAPE EXISTING PAVEMENT AND BASE. UNDERCUT ANY UNSTABLE MATERIAL THAT WILL NOT COMPACT READILY TO A DEPTH DIRECTED BY THE ENGINEER AND BACKFILL WITH SELECT FILL MATERIAL. COMPACT TO 95% DENSITY BEFORE PLACING ASPHALT BLACK BASE.

**PAVEMENT TYPE 3**



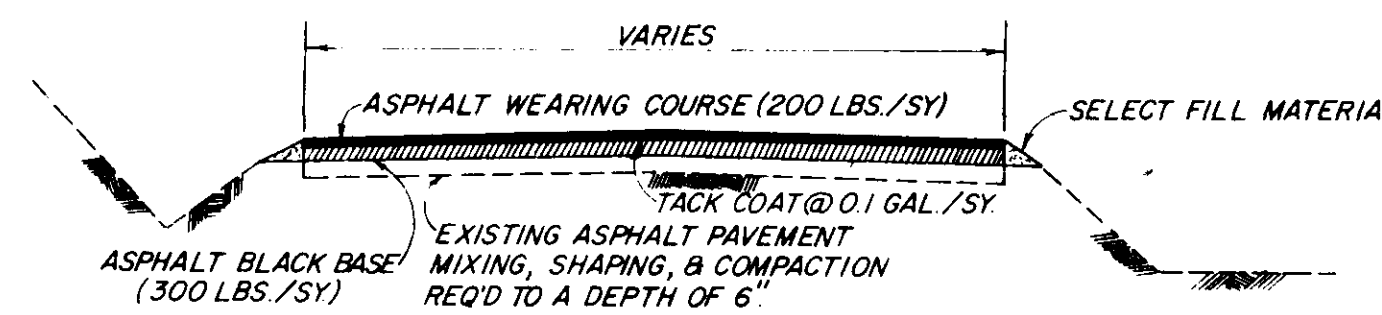
NOTE: THOROUGHLY CLEAN THE EXISTING PAVEMENT. REPAIR RAVELED EDGES AND POTHOLES BY TACK-COATING, FILLING WITH ASPHALT BLACK BASE, AND THOROUGHLY COMPACTING TO CONFORM TO SURROUNDING SURFACES. UNDERCUT ALL FAILED AREAS THAT SHOW VISIBLE SIGNS OF YIELDING UNDER TRAFFIC OR EQUIPMENT TO A DEPTH DIRECTED BY THE ENGINEER. BACKFILL WITH SELECT FILL MATERIAL AND 5" ASPHALT BLACK BASE TO 95% DENSITY. WHERE THE EXISTING PAVEMENT IS IRREGULAR, IT SHALL BE BROUGHT TO THE PROPER CROSS SECTION AND GRADE BY A LEVELING COURSE PLACED ON THE ROADWAY AND SPREAD WITH A MOTOR GRADER. THE LEVELING COURSE MATERIAL SHALL BE ROLLED UNTIL IT IS COMPACTED AND IN CONFORMITY WITH THE SURROUNDING SURFACE.

**PAVEMENT TYPE 1**



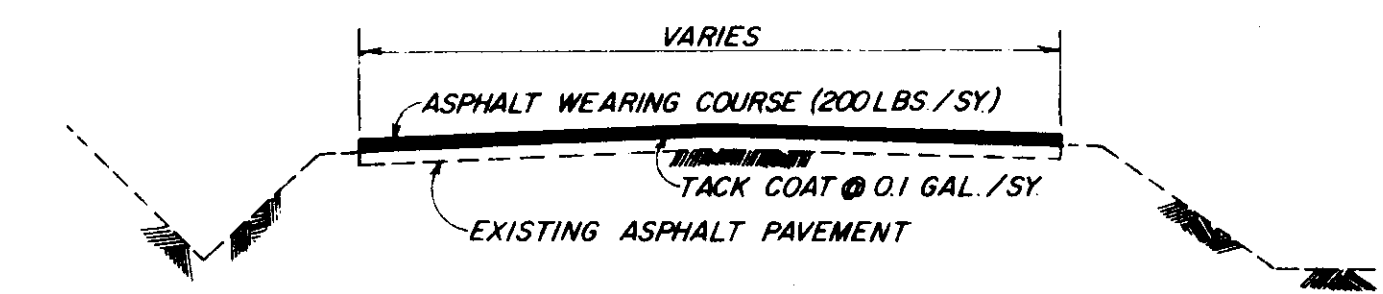
NOTE: CONSTRUCT SHOULDERS AND COMPACT TO 95% DENSITY. SCARIFY, PULVERIZE, AND RESHAPE EXISTING PAVEMENT AND BASE. UNDERCUT ANY UNSTABLE MATERIAL THAT WILL NOT COMPACT READILY TO A DEPTH DIRECTED BY THE ENGINEER AND BACKFILL WITH SELECT FILL MATERIAL. COMPACT TO 95% DENSITY BEFORE PLACING ASPHALT BLACK BASE.

**PAVEMENT TYPE 7**



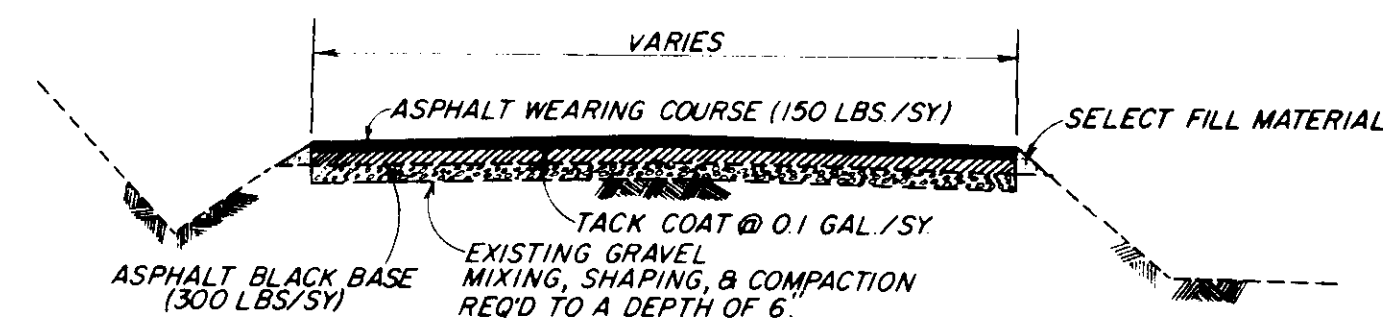
NOTE: SCARIFY, PULVERIZE, AND RESHAPE EXISTING PAVEMENT AND BASE. UNDERCUT ANY UNSTABLE MATERIAL THAT WILL NOT COMPACT READILY TO A DEPTH DIRECTED BY THE ENGINEER AND BACKFILL WITH SELECT FILL MATERIAL. COMPACT TO 95% DENSITY BEFORE PLACING ASPHALT BLACK BASE.

**PAVEMENT TYPE 4**



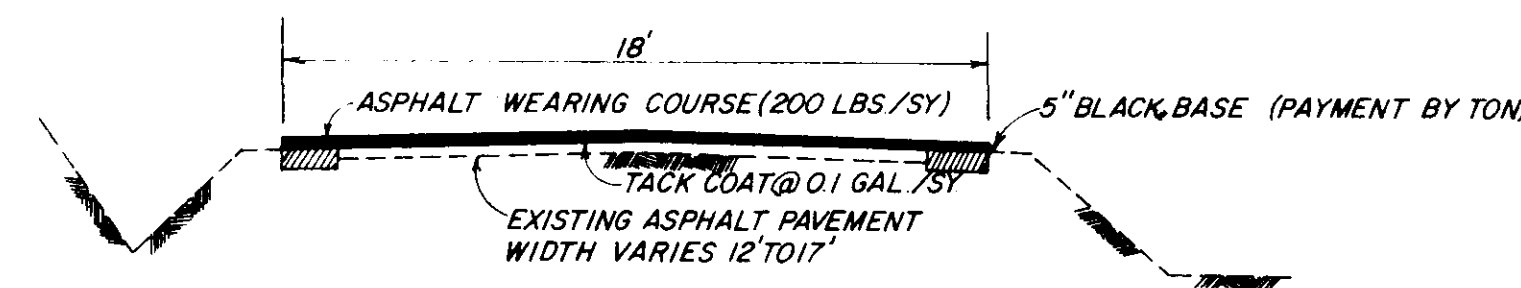
NOTE: THOROUGHLY CLEAN THE EXISTING PAVEMENT. REPAIR RAVELED EDGES AND POTHOLES BY TACK-COATING, FILLING WITH ASPHALT BLACK BASE AND THOROUGHLY COMPACTING TO CONFORM TO SURROUNDING SURFACES. UNDERCUT ALL FAILED AREAS THAT SHOW VISIBLE SIGNS OF YIELDING UNDER TRAFFIC OR EQUIPMENT TO A DEPTH DIRECTED BY THE ENGINEER. BACKFILL WITH SELECT FILL MATERIAL AND 5" ASPHALT BLACK BASE TO 95% DENSITY. WHERE THE EXISTING PAVEMENT IS IRREGULAR, IT SHALL BE BROUGHT TO THE PROPER CROSS SECTION AND GRADE BY A LEVELING COURSE PLACED ON THE ROADWAY AND SPREAD WITH A MOTOR GRADER. THE LEVELING COURSE MATERIAL SHALL BE ROLLED UNTIL IT IS COMPACTED AND IN CONFORMITY WITH THE SURROUNDING SURFACE.

**PAVEMENT TYPE 2**



NOTE: UNDERCUT ANY UNSTABLE MATERIAL THAT WILL NOT COMPACT READILY TO A DEPTH DIRECTED BY THE ENGINEER AND BACKFILL WITH SELECT FILL MATERIAL. SCARIFY, PULVERIZE, RESHAPE, AND COMPACT TO 95% DENSITY BEFORE PLACING ASPHALT BLACK BASE.

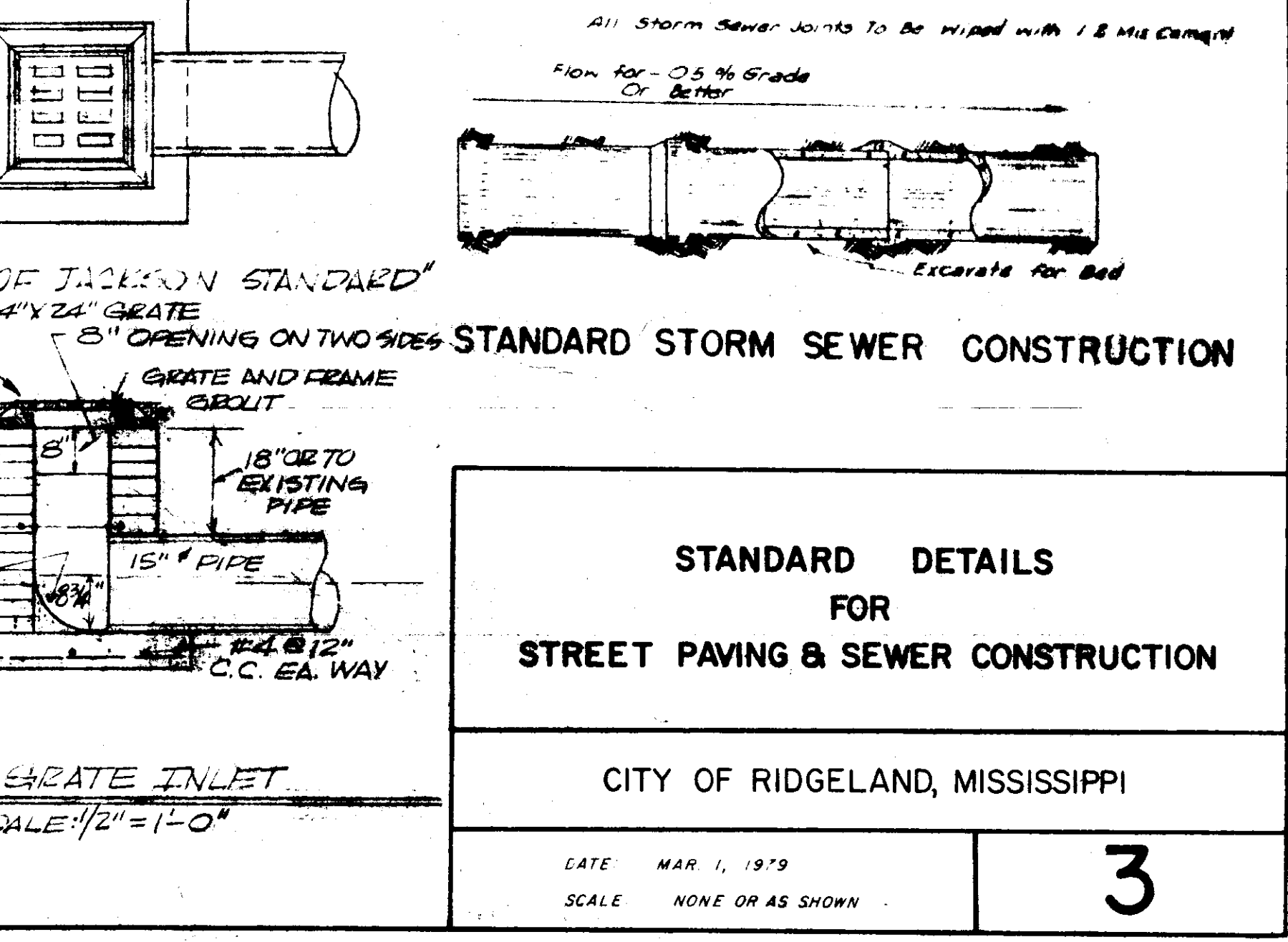
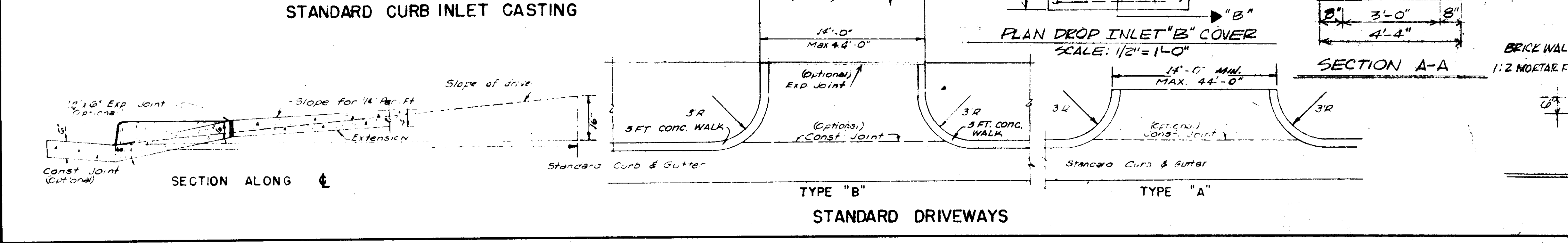
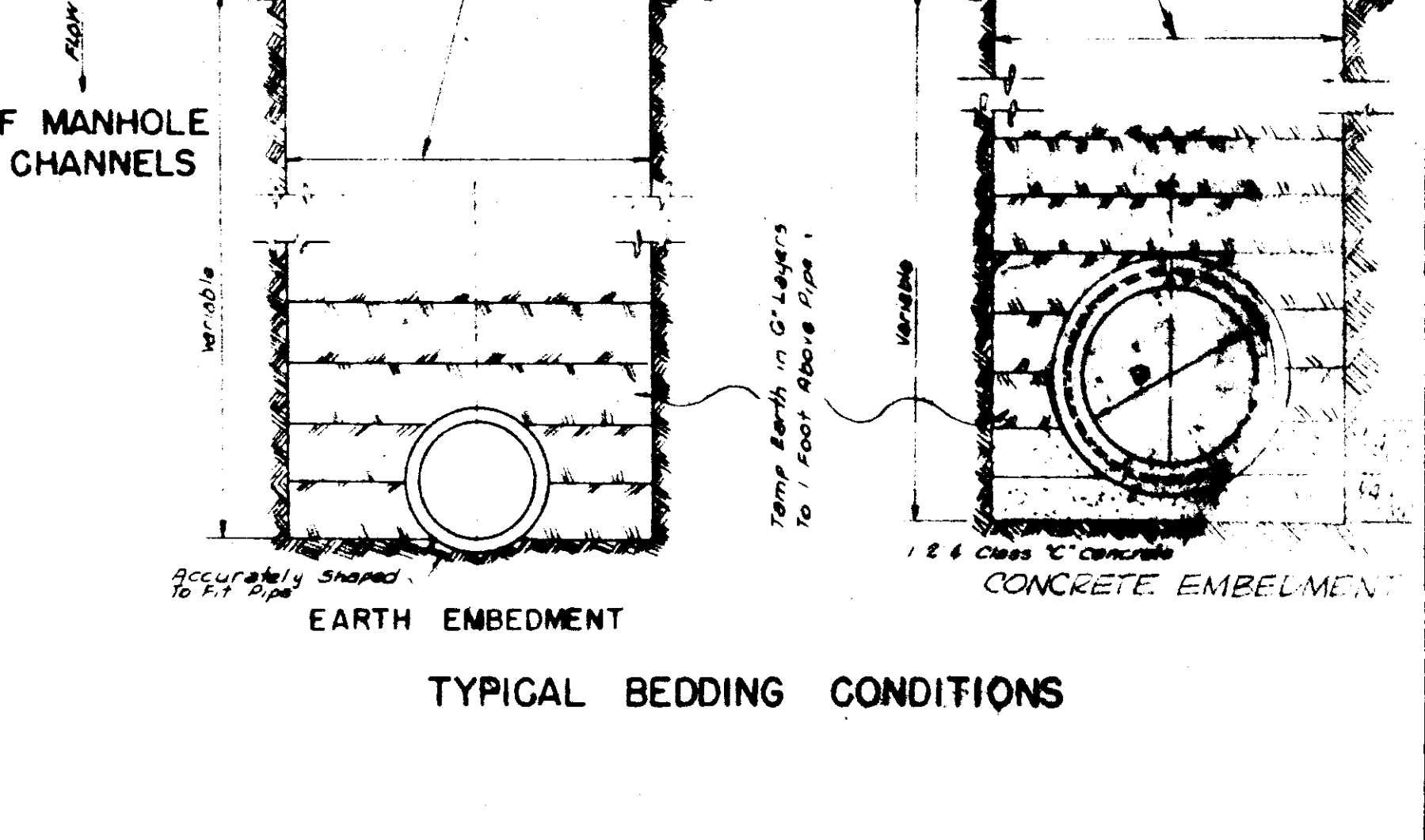
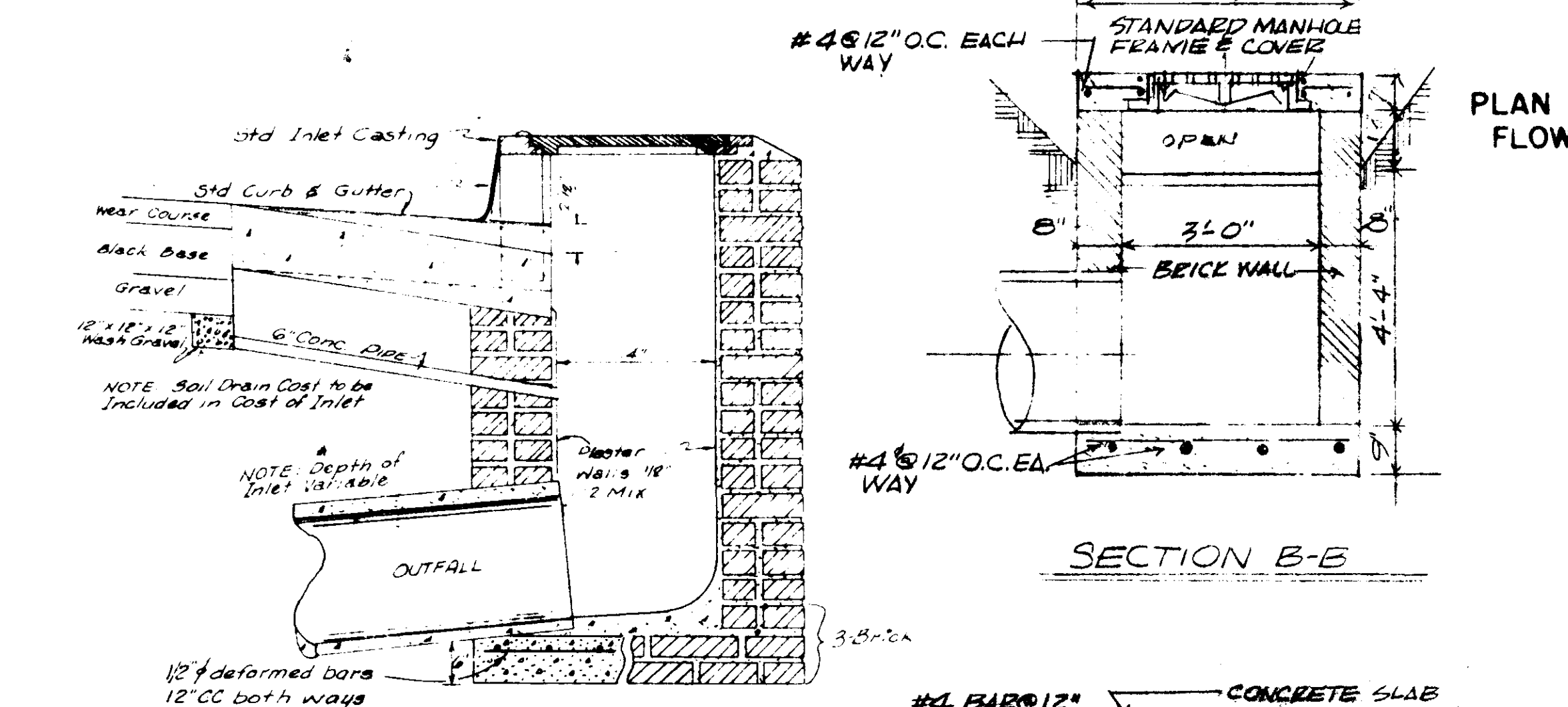
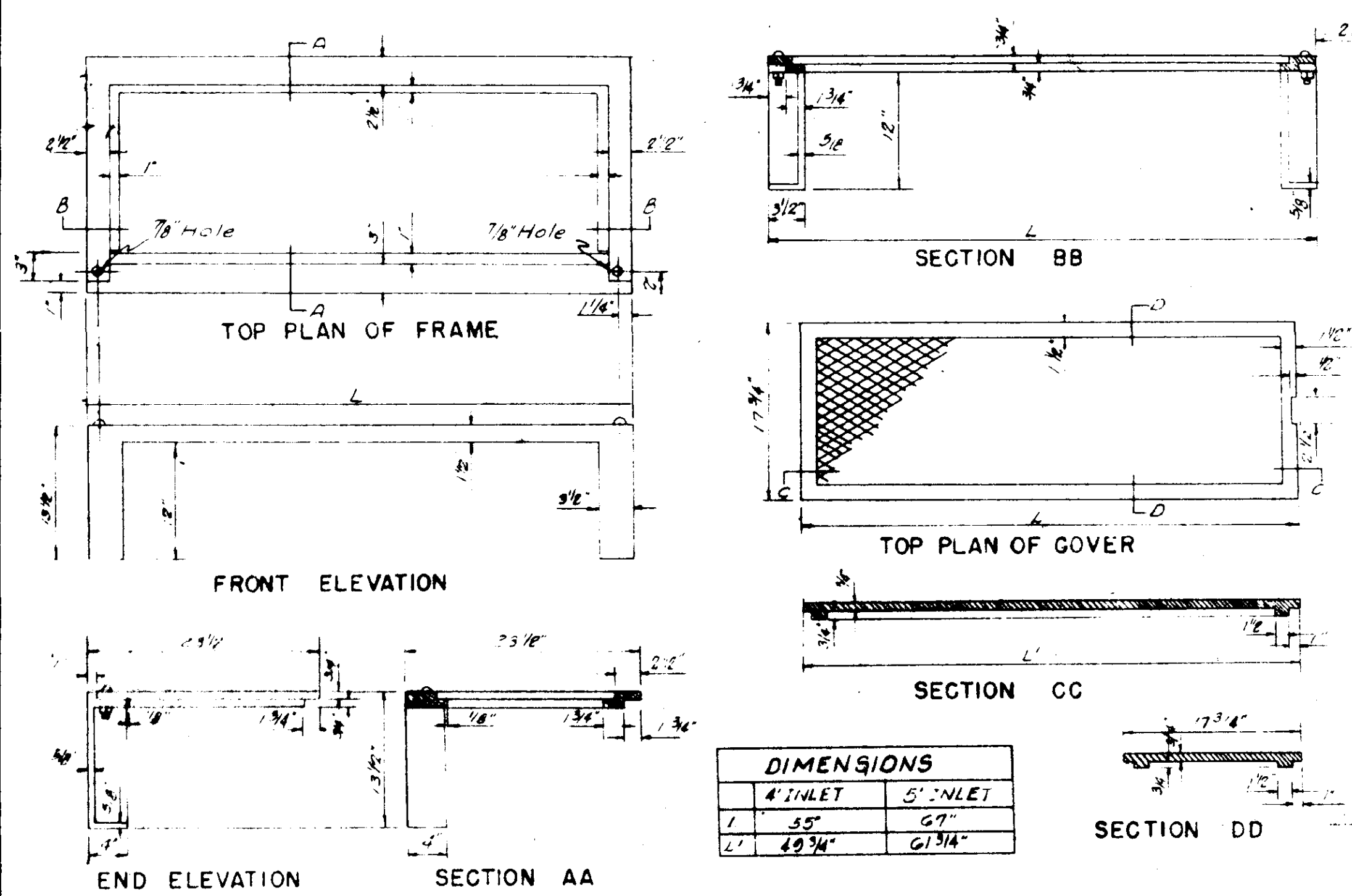
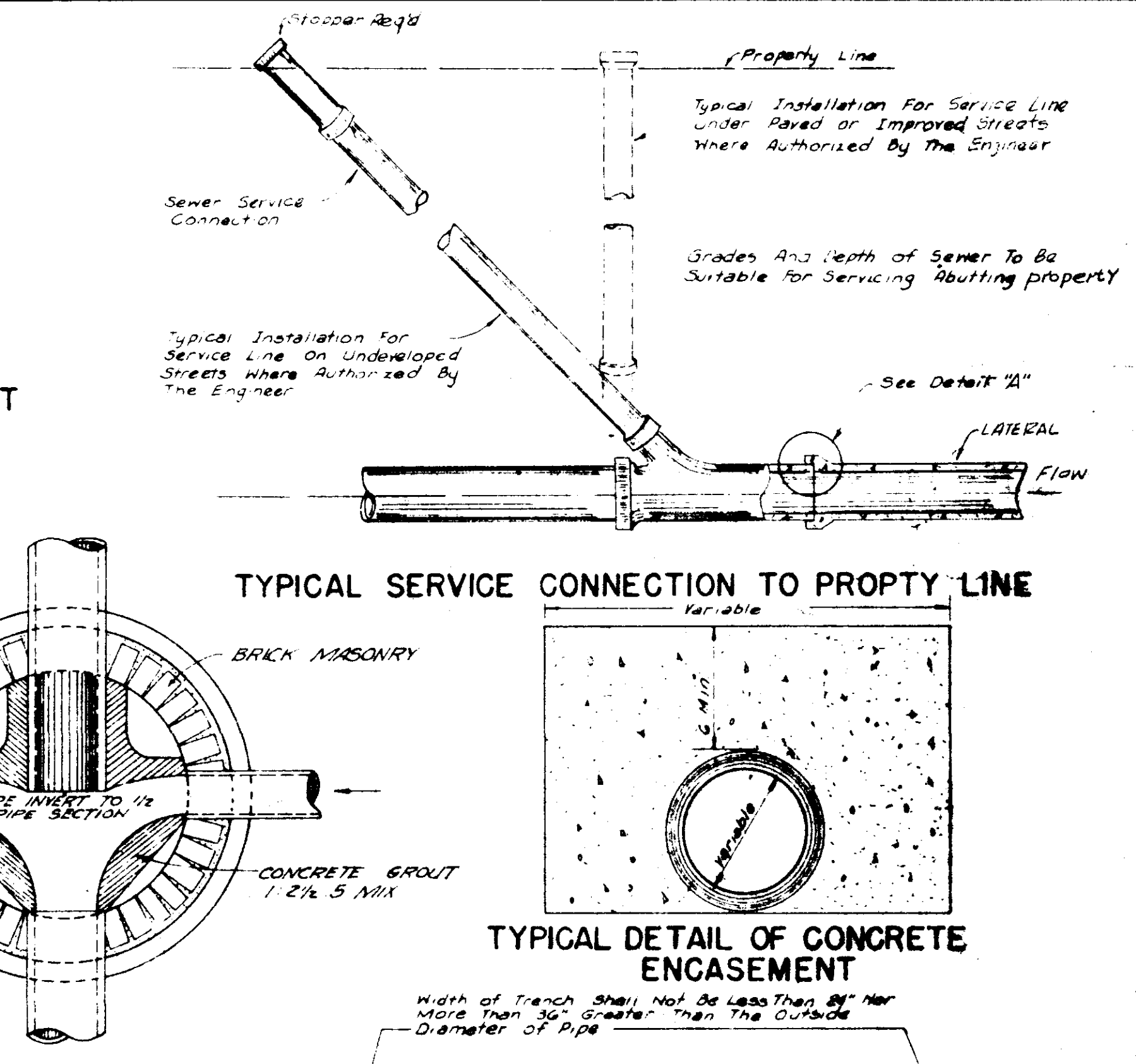
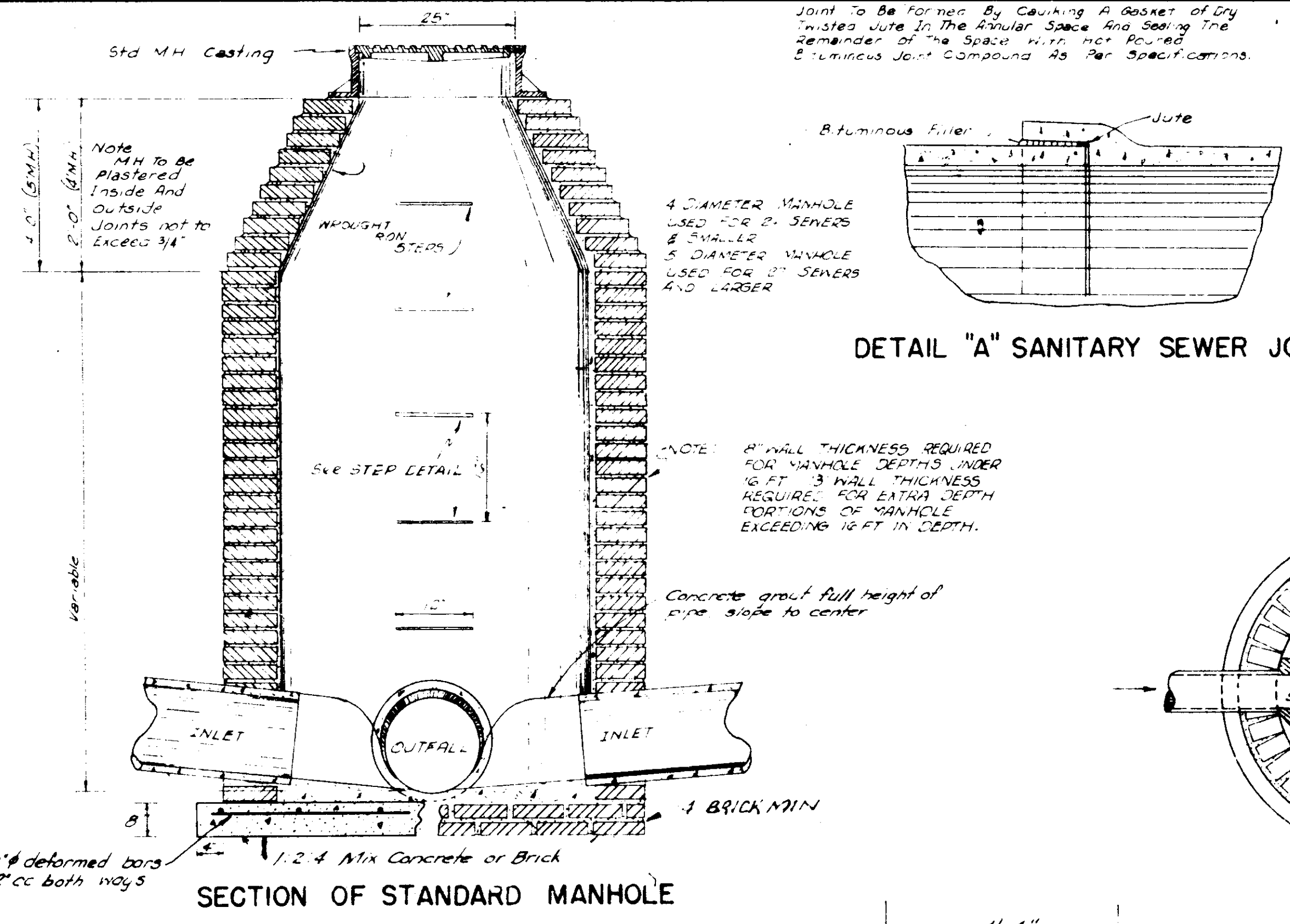
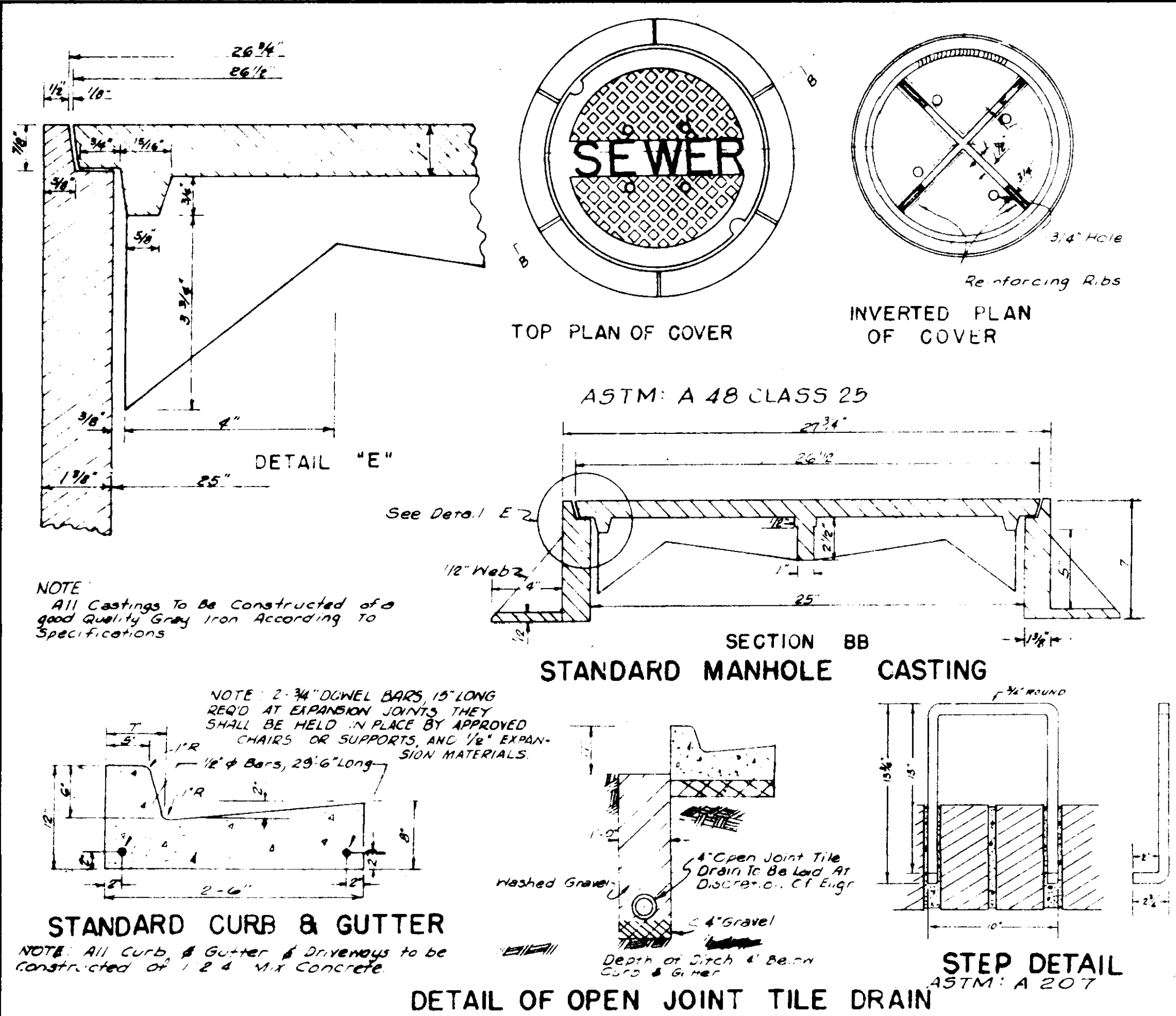
**PAVEMENT TYPE 8**



NOTE: THOROUGHLY CLEAN THE EXISTING PAVEMENT. EXCAVATE TO A DEPTH OF 5" ALONG THE EDGES OF THE EXISTING PAVEMENT AND COMPACT TRENCHES TO 95% DENSITY. BACKFILL WITH ASPHALT BLACK BASE AND COMPACT TO 95% DENSITY. REPAIR POTHOLES BY TACK-COATING, FILLING WITH ASPHALT BLACK BASE, AND THOROUGHLY COMPACTING TO CONFORM TO SURROUNDING SURFACES. UNDERCUT ALL FAILED AREAS THAT SHOW VISIBLE SIGNS OF YIELDING UNDER TRAFFIC OR EQUIPMENT TO A DEPTH DIRECTED BY THE ENGINEER. BACKFILL WITH SELECT FILL MATERIAL AND 5" ASPHALT BLACK BASE. COMPACT BOTH SELECT FILL MATERIAL AND ASPHALT BLACK BASE TO 95% DENSITY. WHERE THE EXISTING PAVEMENT IS IRREGULAR, IT SHALL BE BROUGHT TO THE PROPER CROSS SECTION AND GRADE BY A LEVELING COURSE PLACED ON THE ROADWAY AND SPREAD WITH A MOTOR GRADER. THE LEVELING COURSE MATERIAL SHALL BE ROLLED UNTIL IT IS COMPACTED AND IN CONFORMITY WITH THE SURROUNDING SURFACE.

**PAVEMENT TYPE 5**

| PAVING AND GRADING SECTIONS |          |             |             |
|-----------------------------|----------|-------------|-------------|
| SCALE                       | NONE     | DESIGNED BY | C.N.        |
| DATE                        | FEB 1979 | APPROVED BY | T.S.B.      |
| RIDGLAND, MISSISSIPPI       |          | DRAWN BY    | EG          |
| BARTH & ASSOCIATES, INC.    |          |             | DRAWING NO. |
| CONSULTING ENGINEERS        |          |             | 2           |
| JACKSON, MISSISSIPPI        |          |             |             |

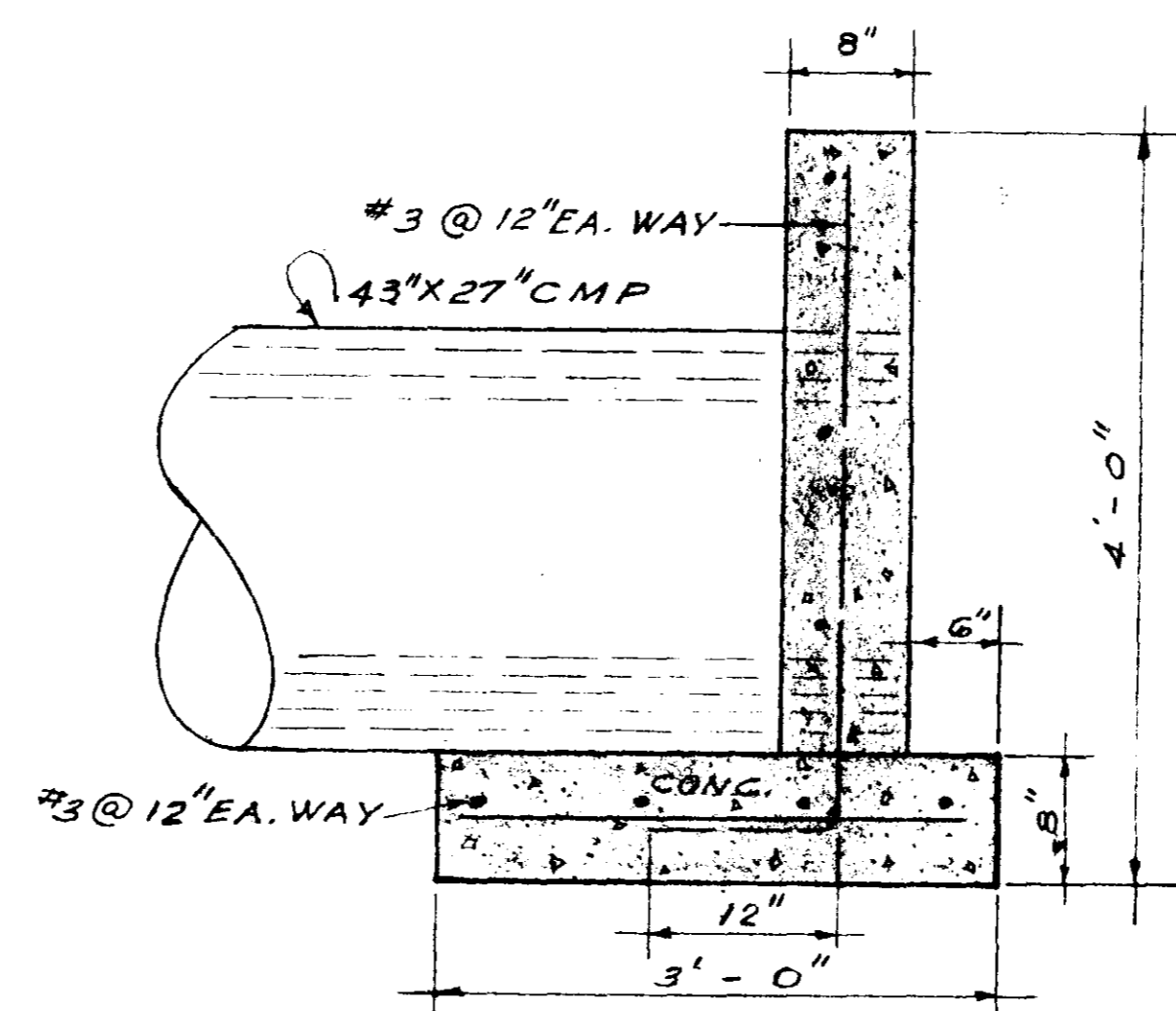
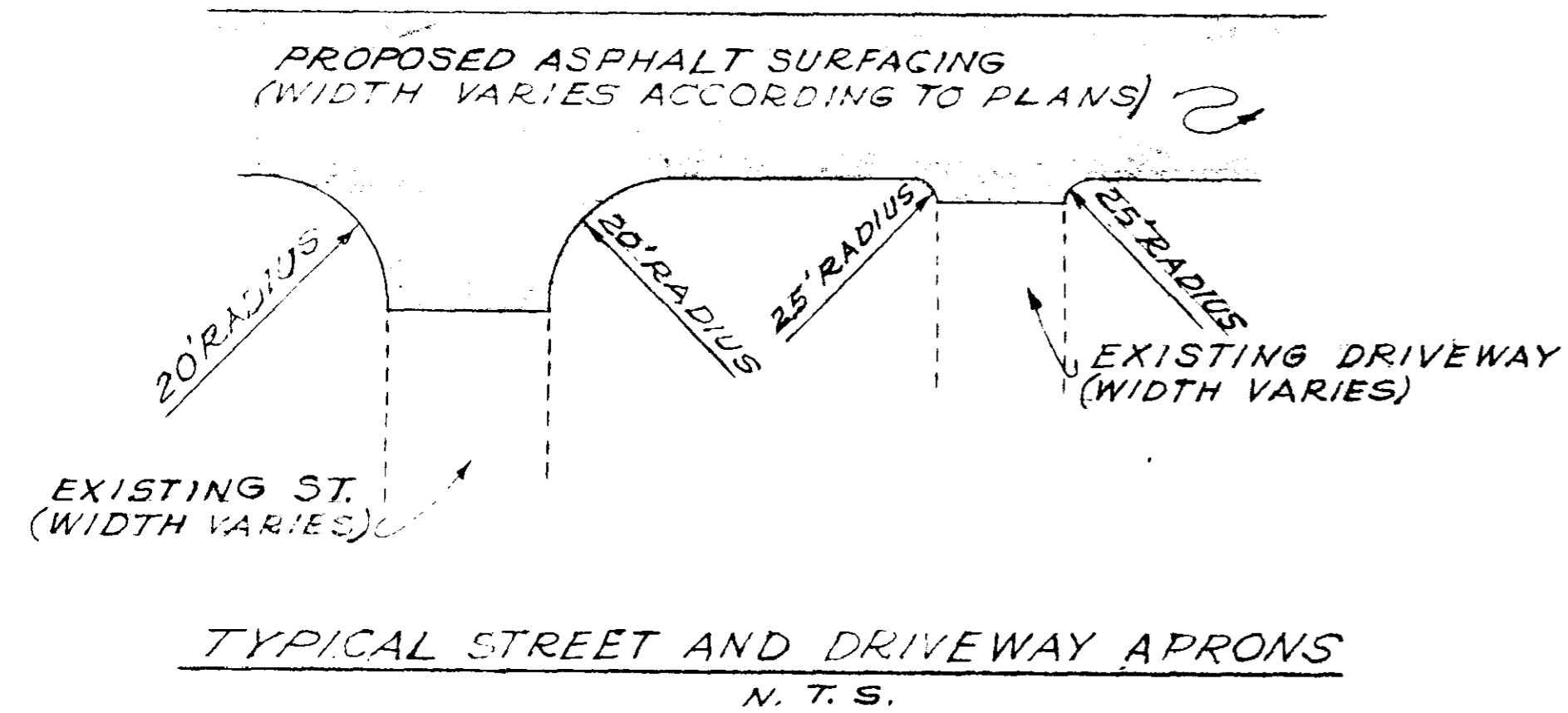


**STANDARD DETAILS FOR STREET PAVING & SEWER CONSTRUCTION**

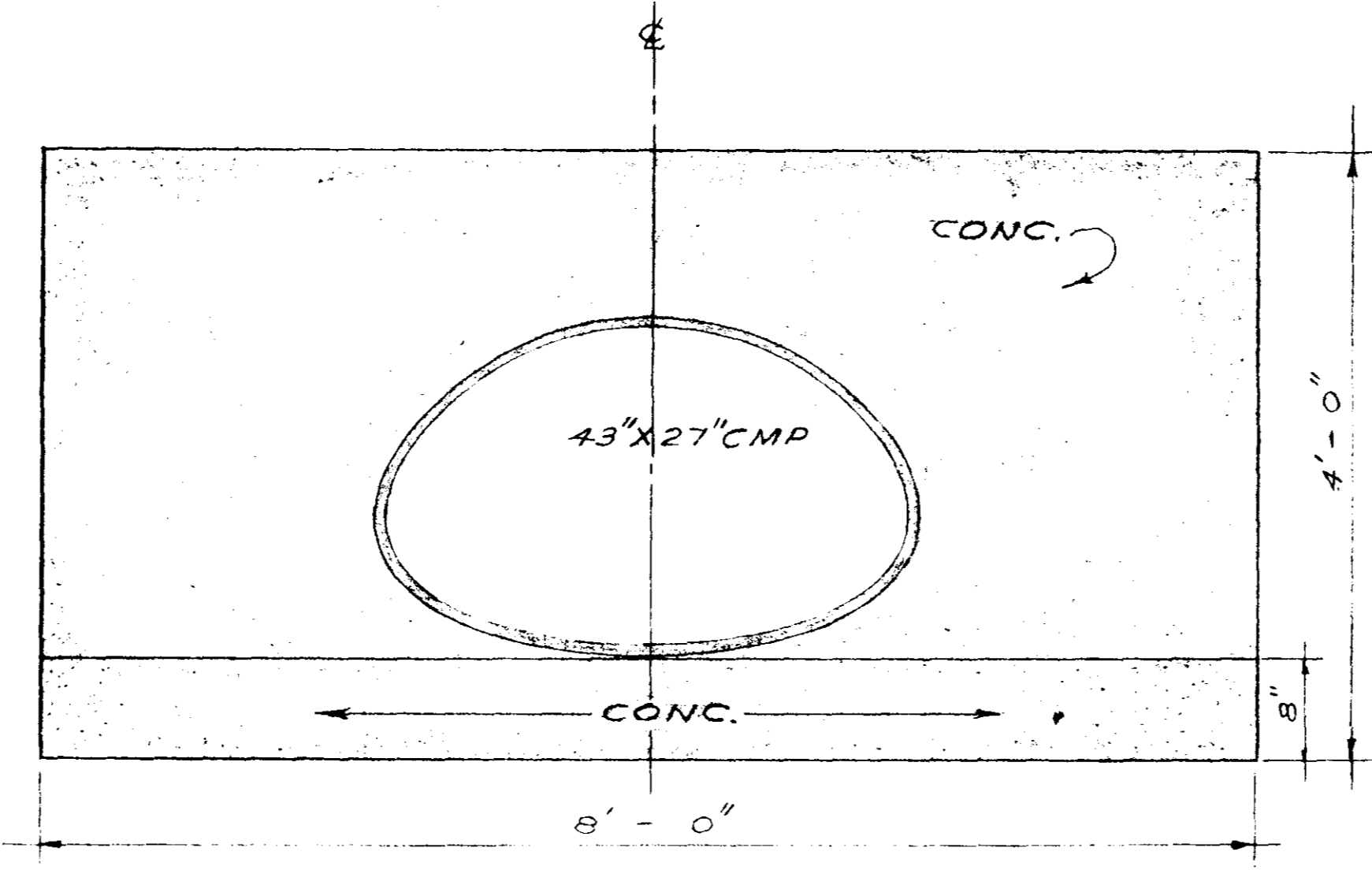
CITY OF RIDGELAND, MISSISSIPPI

DATE: MAR. 1, 1979  
SCALE: NONE OR AS SHOWN

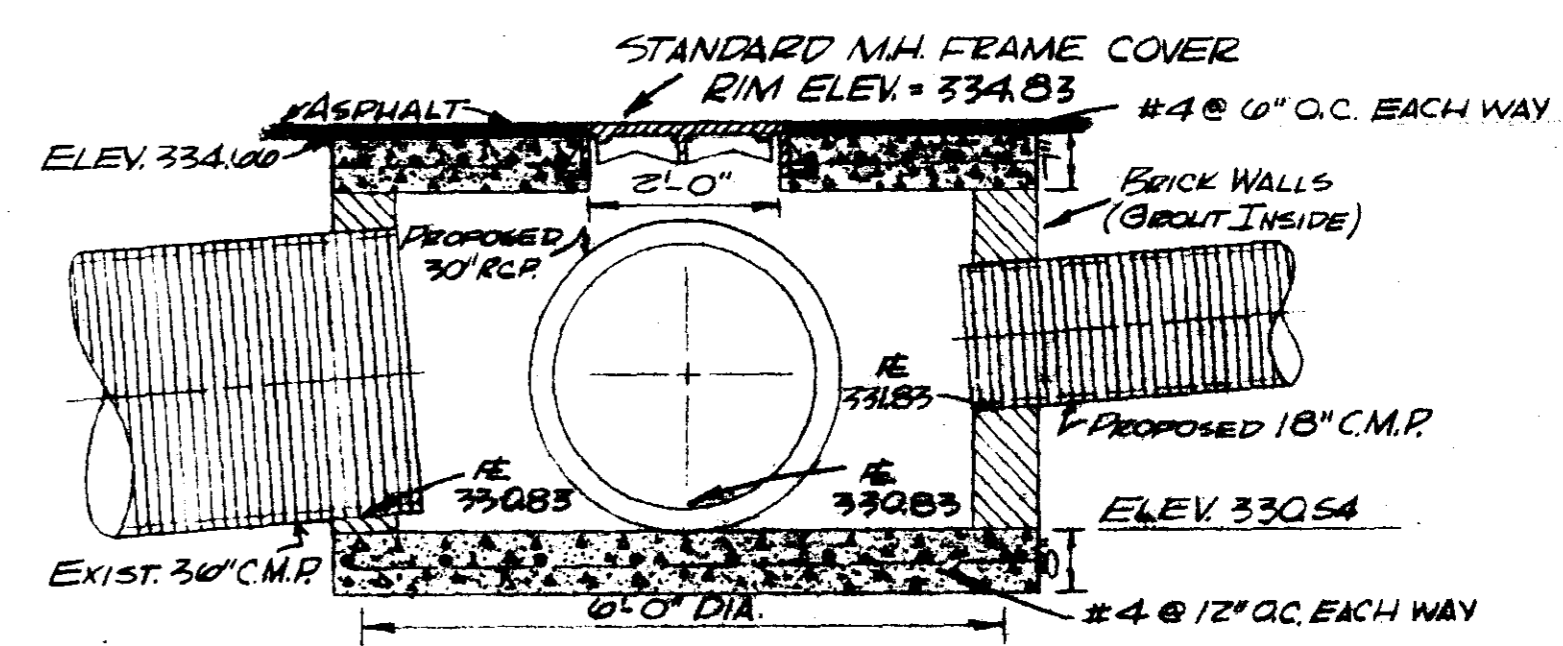
**3**



SECTION THRU HEADWALL  
SCALE 1" = 1'-0"



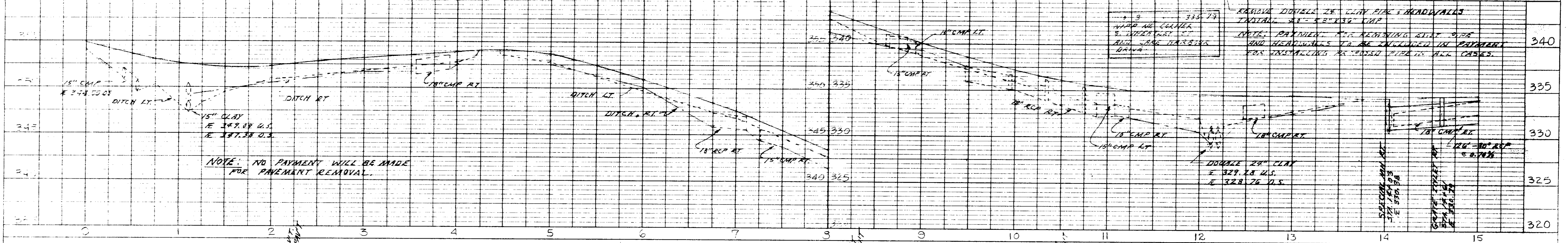
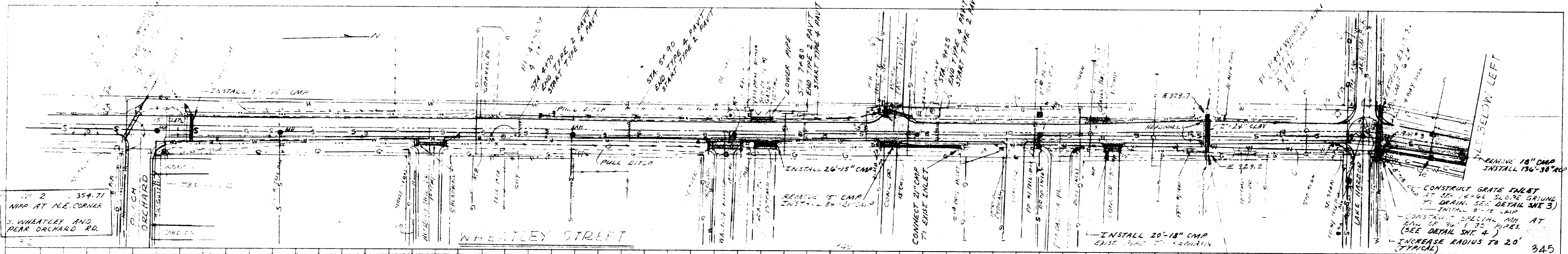
HEADWALL  
SCALE 1" = 1'-0"  
EAST MOON STREET



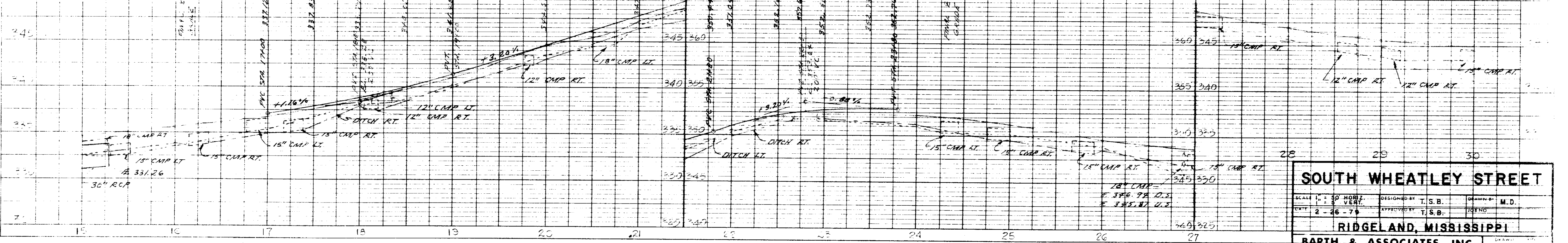
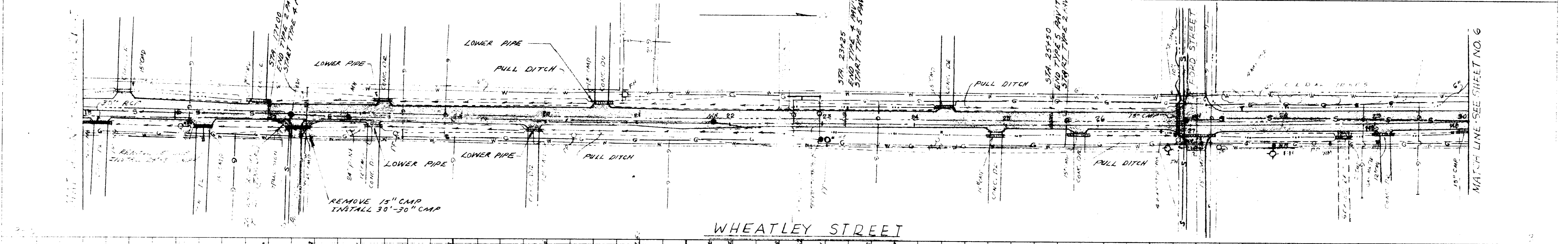
SPECIAL MANHOLE DETAIL  
SOUTH WHEATLEY STREET AT LAKE HARBOUR DRIVE  
SCALE 1/2" = 1'-0"

|  |                      |                         |
|--|----------------------|-------------------------|
| SPECIAL MANHOLE, HEADWALL,<br>STREET & DRIVEWAY DETAIL                   |                      |                         |
| SCALE AS SHOWN   | DESIGNED BY T. S. B. | DRAWN BY S. M. - A. G.  |
| DATE 2-26-79   | APPROVED BY T. S. B. | JOB NO.                 |
| RIDGELAND, MISSISSIPPI   |                      |                         |
| BARTH & ASSOCIATES, INC.<br>CONSULTING ENGINEERS<br>JACKSON, MISSISSIPPI |                      | DRAWING NO.<br><b>4</b> |

**PLAN**  
 SURVEYED  
 NOTE: CHECK ALIGNMENT CHECKED BY OF WAY CHECKED



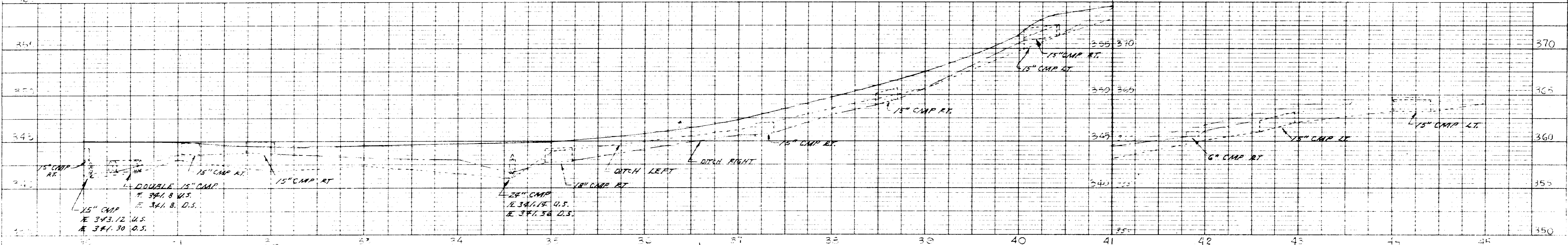
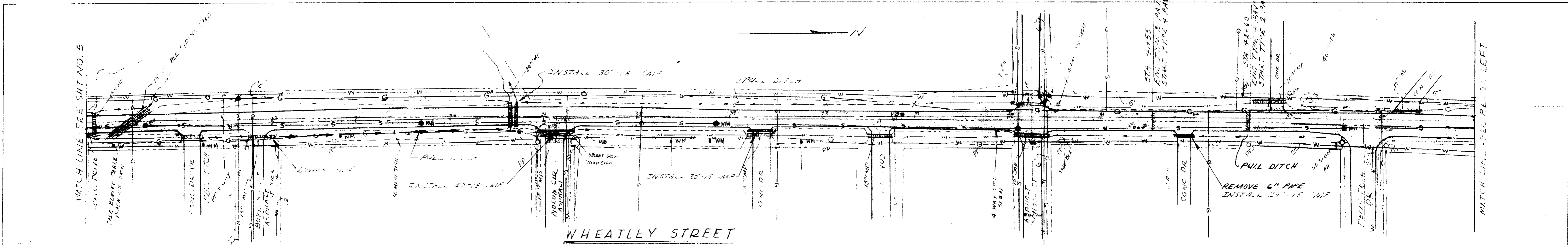
**PROFILE**  
 SURVEYED  
 NOTE: CHECK GRADE, CHECKED BY OF WAY CHECKED



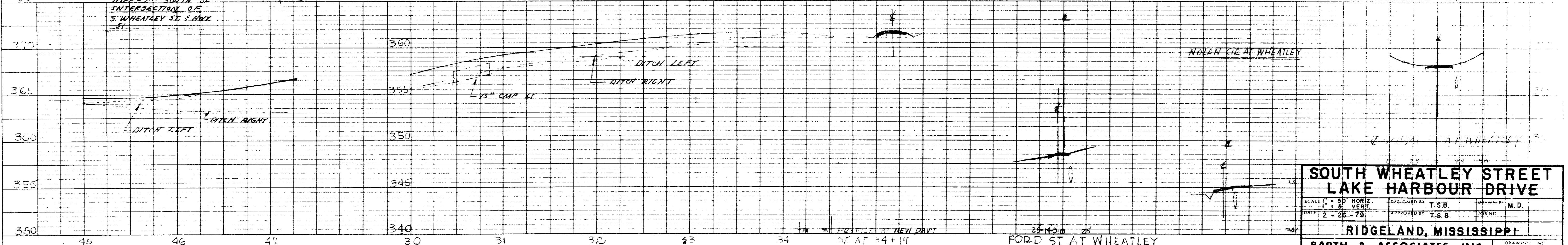
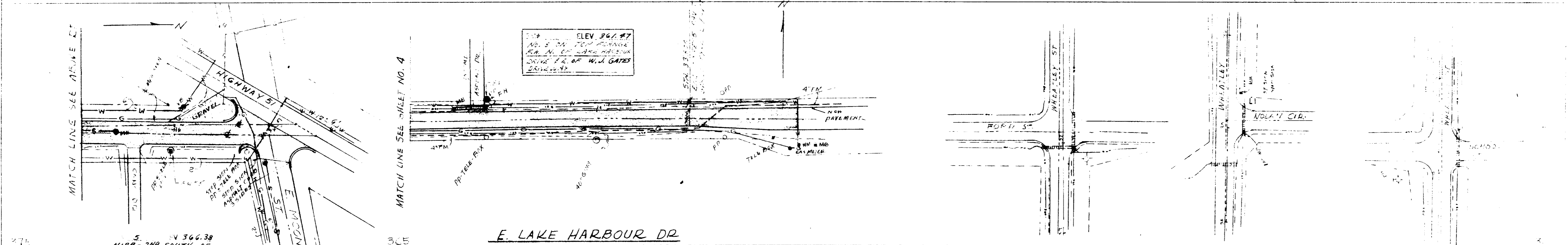
INDIANAPOLIS, INDIANA

**SOUTH WHEATLEY STREET**  
 SCALE 1" = 50' HORIZ. 1" = 5' VERT.  
 DATE 2-26-78  
 DESIGNED BY T.S.B. DRAWN BY M.D.  
 APPROVED BY T.S.B. CHECKED BY M.D.  
**RIDGELAND, MISSISSIPPI**  
**BARTH & ASSOCIATES, INC.**  
 CONSULTING ENGINEERS  
 JACKSON, MISSISSIPPI

DATE: \_\_\_\_\_ BY: \_\_\_\_\_  
 PLAN  
 CHECKED BY: \_\_\_\_\_  
 NOTE BOOK ALIGNMENT CHECKED  
 NO. \_\_\_\_\_ BY: \_\_\_\_\_



DATE: \_\_\_\_\_ BY: \_\_\_\_\_  
 PROFILE  
 CHECKED BY: \_\_\_\_\_  
 NOTE BOOK GRADES CHECKED  
 NO. \_\_\_\_\_ BY: \_\_\_\_\_



**SOUTH WHEATLEY STREET  
 LAKE HARBOUR DRIVE**

SCALE: 1" = 50' HORIZ. 1" = 5' VERT.  
 DATE: 2-26-79  
 DESIGNED BY: T.S.B.  
 APPROVED BY: T.S.B.  
 DRAWN BY: M.D.  
 CHECKED BY: \_\_\_\_\_

**RIDGELAND, MISSISSIPPI**

**BARTH & ASSOCIATES, INC.**  
 CONSULTING ENGINEERS  
 JACKSON, MISSISSIPPI

6

**PLAN**  
 SURVEYED  
 PLOTTED  
 NOTE BOOK ALIGNMENT SHEET  
 No. 8 OF 14 SHEETS

**PROFILE**  
 SURVEYED  
 PLOTTED  
 NOTE BOOK ELEVATIONS  
 No. 1 STRUCTURE MODIFICATIONS CHECKED

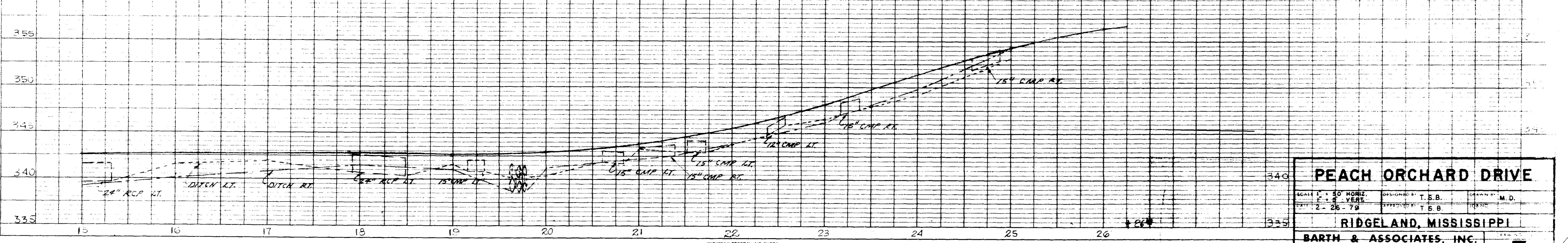
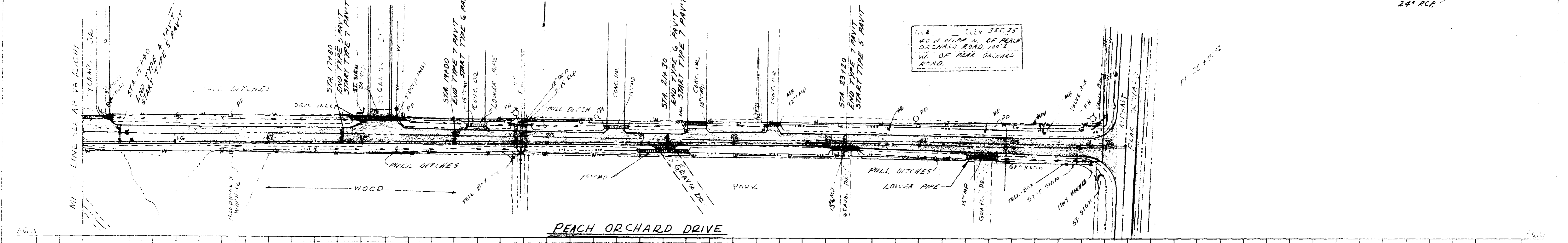
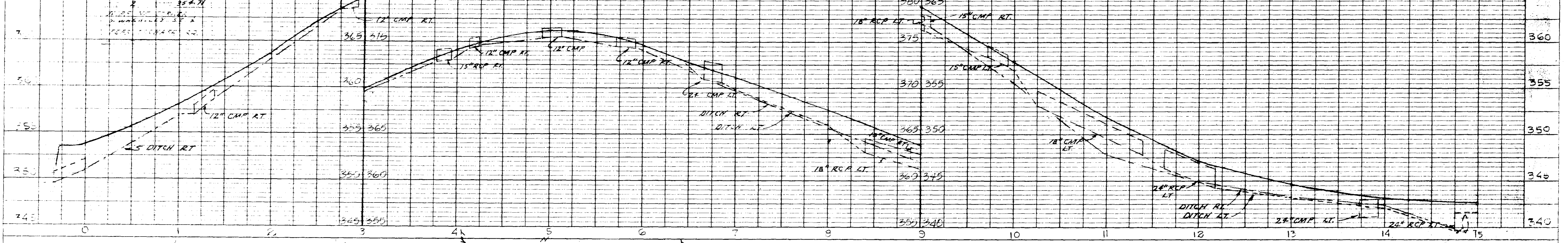
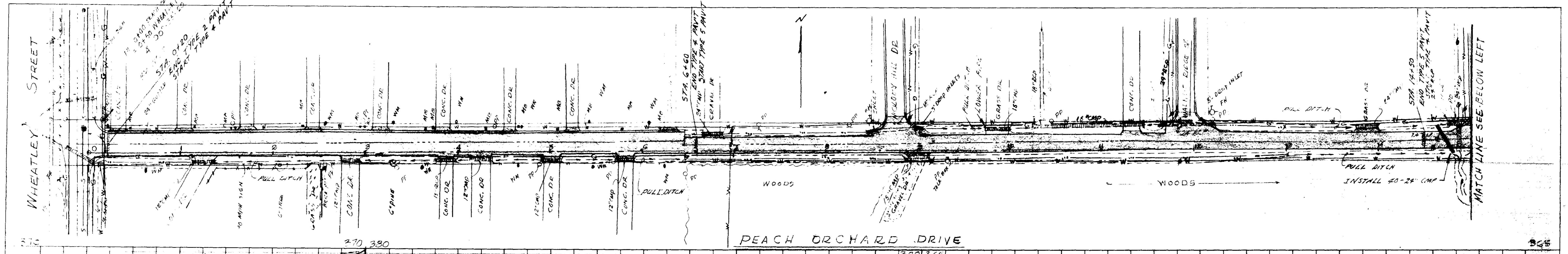
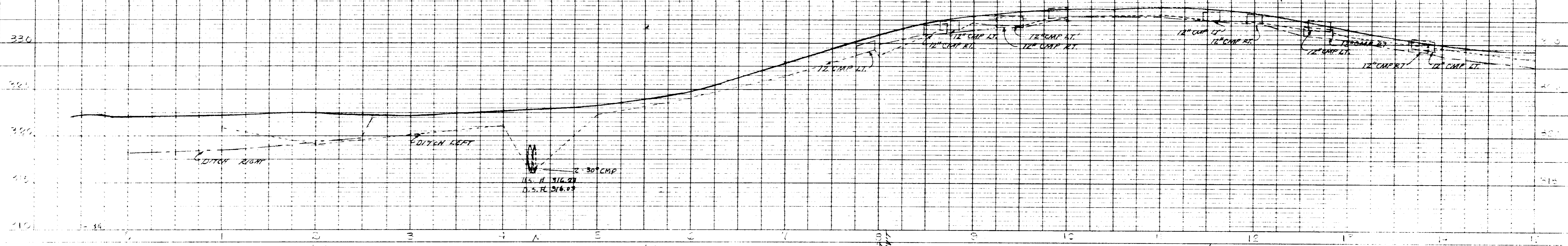
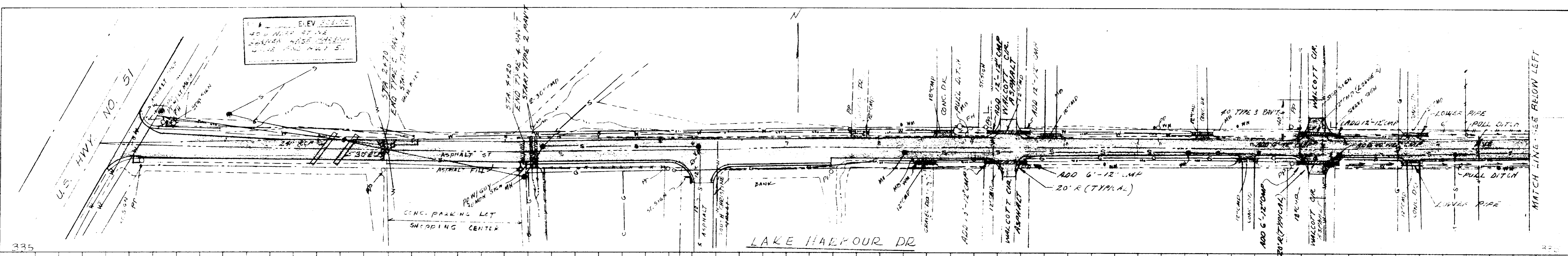


PLATE 2-DOUBLE PLAN AND PROFILE-FULL LINE  
 HIGHWAY FEDERAL AID SHEET  
 INDIANAPOLIS, INDIANA PRINTED IN U.S.A.

|  |                     |                  |
|--|---------------------|------------------|
| <b>PEACH ORCHARD DRIVE</b>                   |                     |                  |
| SCALE: HORIZ. 1" = 20' VERT. 1" = 2' VEAT    | DESIGNED BY: T.S.B. | CHECKED BY: M.D. |
| DATE: 2-26-79                                | APPROVED BY: T.S.B. |                  |
| <b>RIDGELAND, MISSISSIPPI</b>                |                     |                  |
| <b>BARTH &amp; ASSOCIATES, INC.</b>          |                     |                  |
| CONSULTING ENGINEERS<br>JACKSON, MISSISSIPPI |                     |                  |



PLAN  
 DRAWN BY: [blank]  
 CHECKED BY: [blank]  
 DATE: [blank]



PROFILE  
 DRAWN BY: [blank]  
 CHECKED BY: [blank]  
 DATE: [blank]

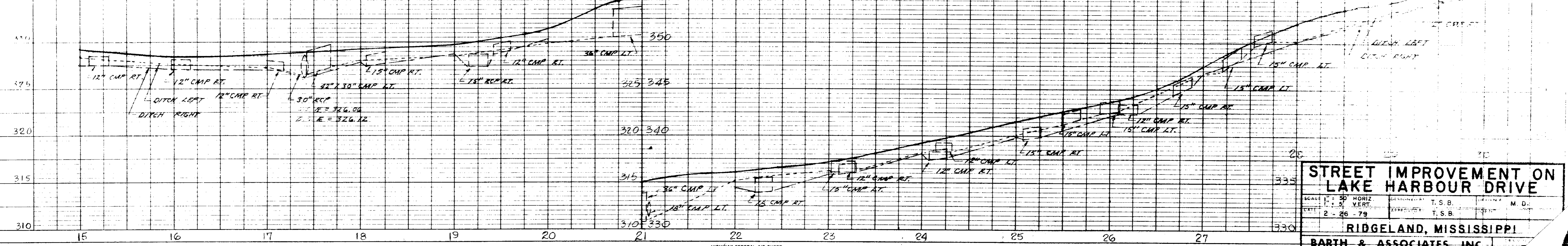
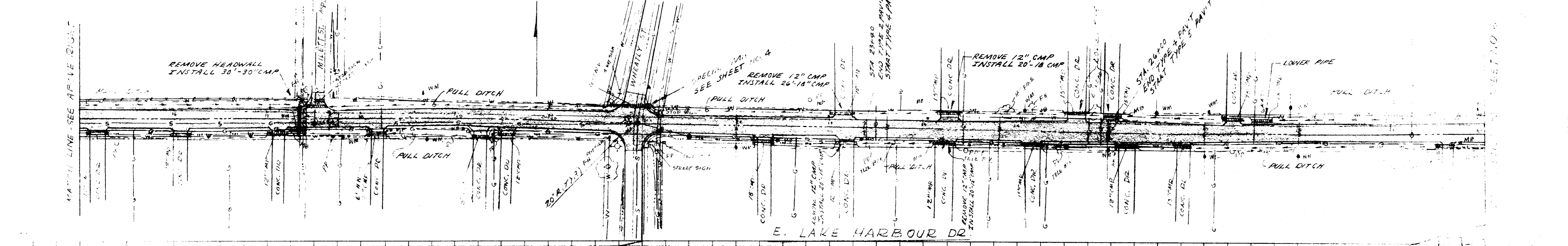


PLATE 2-DOUBLE PLAN AND PROFILE-FULL LINE  
 TELEPHONE NATIONAL TRACING PAPER  
 PRINTED IN U.S.A.

**STREET IMPROVEMENT ON LAKE HARBOUR DRIVE**

SCALE: HORIZ. 1" = 30', VERT. 1" = 5'  
 DATE: 2-26-79

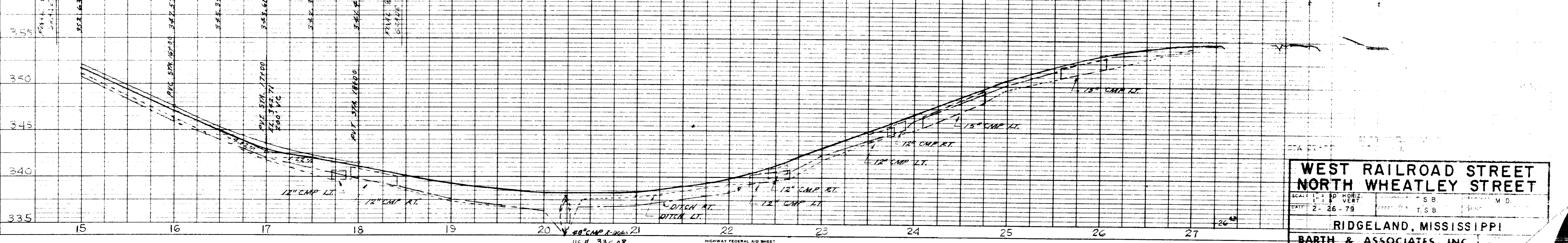
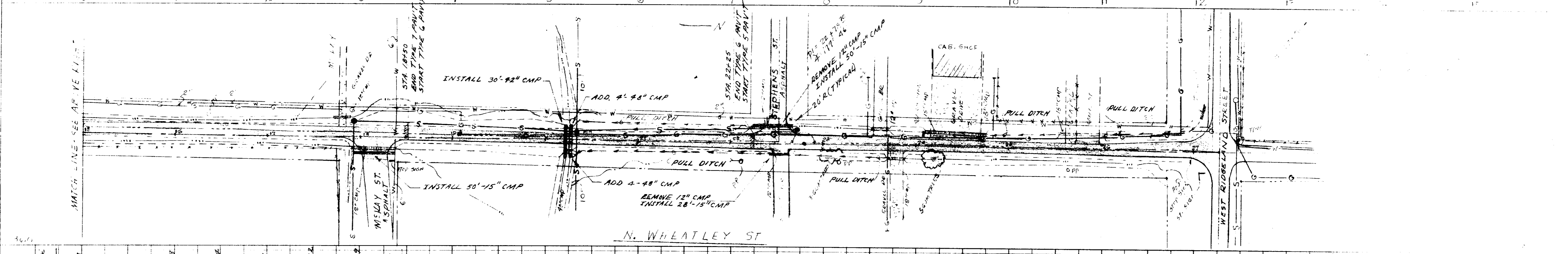
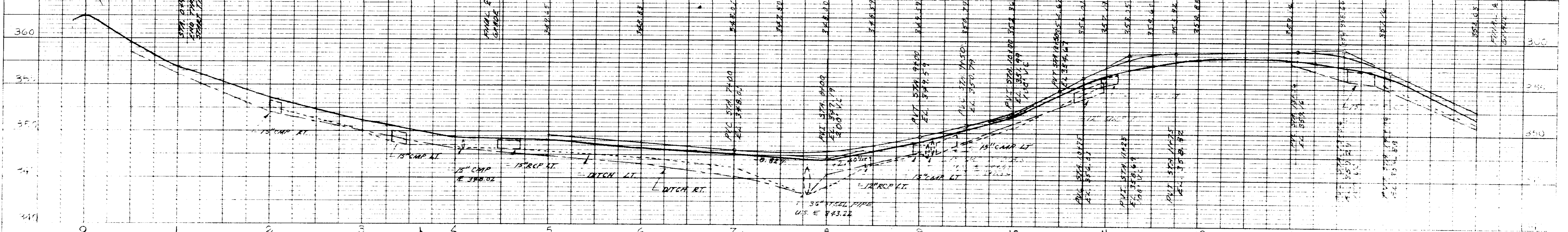
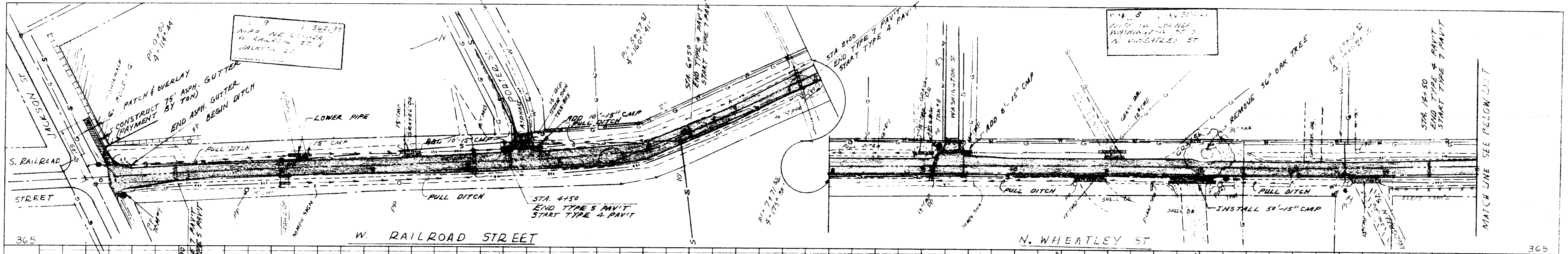
DESIGNED BY: T.S.B.  
 CHECKED BY: T.S.B.

**RIDGELAND, MISSISSIPPI**

**BARTH & ASSOCIATES, INC.**  
 CONSULTING ENGINEERS  
 JACKSON, MISSISSIPPI

**PLAN**  
 SURVEYED BY: [blank]  
 PLOTTED BY: [blank]  
 NOTE BOOK ALIGNMENT CHECKED BY: [blank]  
 NO. 47 OF WAY CHECKED BY: [blank]

**PROFILE**  
 SURVEYED BY: [blank]  
 PLOTTED BY: [blank]  
 NOTE BOOK CHECKED BY: [blank]  
 NO. 47 OF WAY CHECKED BY: [blank]

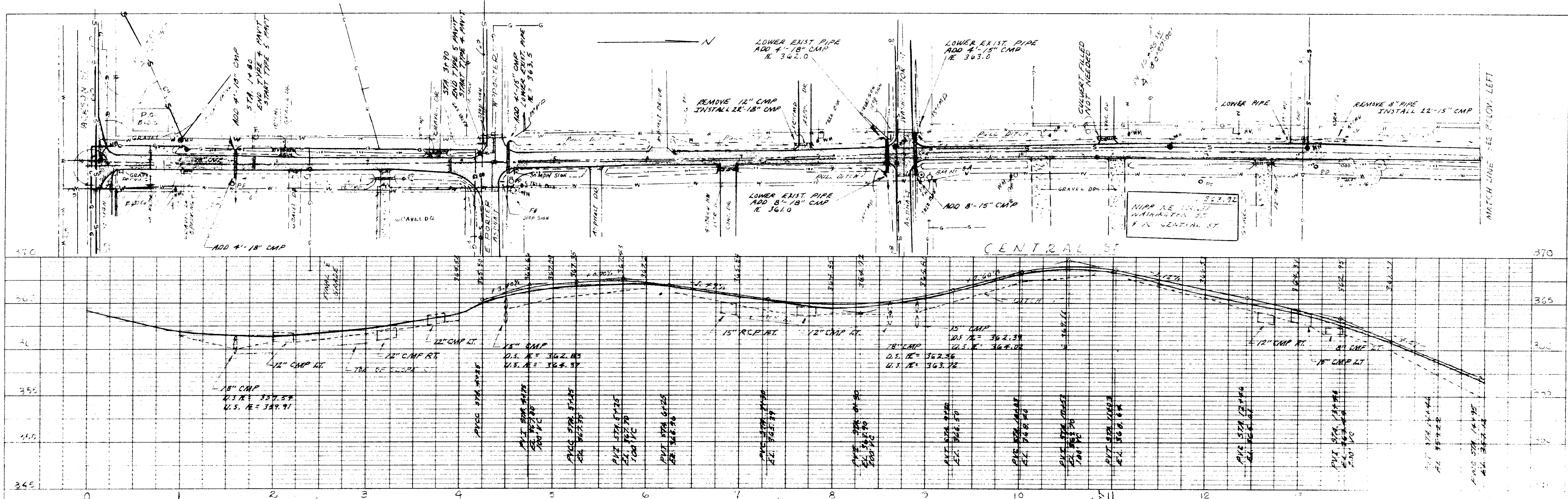


US A 334.08  
 05 A 333.58  
 HIGHWAY FEDERAL AID BRIDGE  
 PLATE 2-DOUBLE PLAN AND PROFILE-FULL LINE  
 TELEPHONE NATIONAL TRACING PAPER  
 INDIANAPOLIS, INDIANA PRINTED IN U.S.A.

**WEST RAILROAD STREET  
 NORTH WHEATLEY STREET**  
 SCALE: 1" = 50' HORIZ. 1" = 10' VERT.  
 DATE: 2-26-79  
 RIDGELAND, MISSISSIPPI  
**BARTH & ASSOCIATES, INC.**  
 CONSULTING ENGINEERS  
 JACKSON, MISSISSIPPI

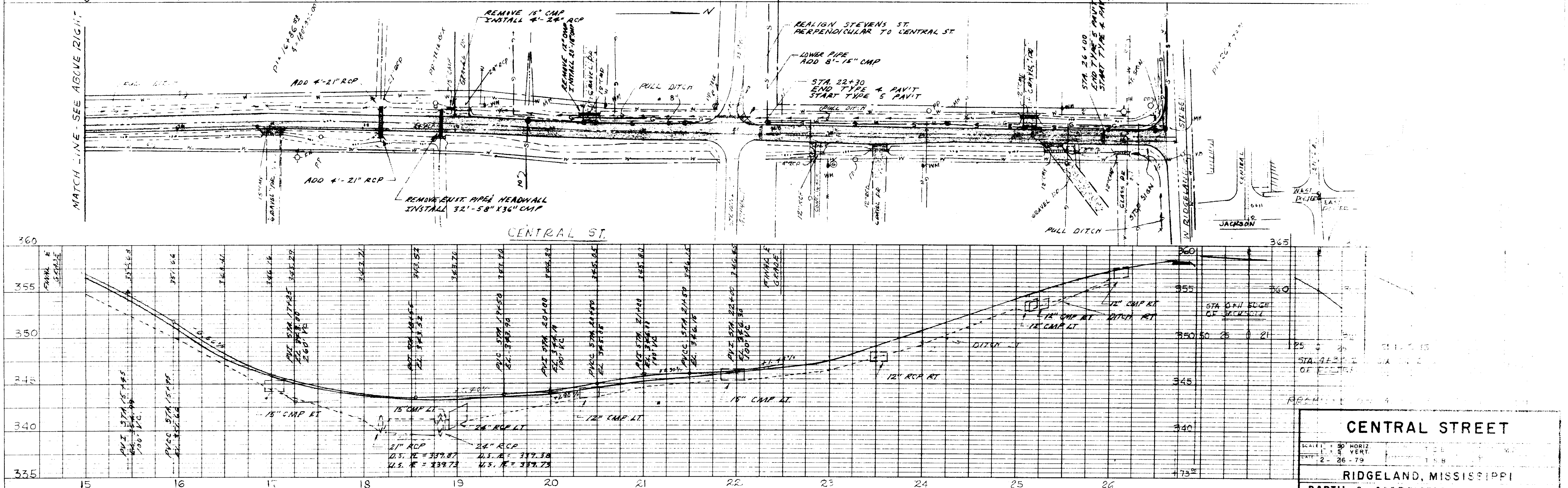
DATE: \_\_\_\_\_ BY: \_\_\_\_\_  
 CHECKED: \_\_\_\_\_  
 DATE: \_\_\_\_\_ BY: \_\_\_\_\_

**PLAN**  
 SURVEYED: \_\_\_\_\_  
 PLOTTED: \_\_\_\_\_  
 NOTE BOOK: \_\_\_\_\_  
 ALIGNMENT CHECKED: \_\_\_\_\_  
 NO. OF WAY CHECKED: \_\_\_\_\_



DATE: \_\_\_\_\_ BY: \_\_\_\_\_  
 CHECKED: \_\_\_\_\_  
 DATE: \_\_\_\_\_ BY: \_\_\_\_\_

**PROFILE**  
 SURVEYED: \_\_\_\_\_  
 PLOTTED: \_\_\_\_\_  
 NOTE BOOK: \_\_\_\_\_  
 GRADES CHECKED: \_\_\_\_\_  
 STRUCTURE NO.: \_\_\_\_\_  
 DATE: \_\_\_\_\_



**CENTRAL STREET**

SCALE: 1" = 50' HORIZ.  
 1" = 5' VERT.

DATE: 2-26-79

**RIDGELAND, MISSISSIPPI**

**BARTH & ASSOCIATES, INC.**  
 CONSULTING ENGINEERS

10