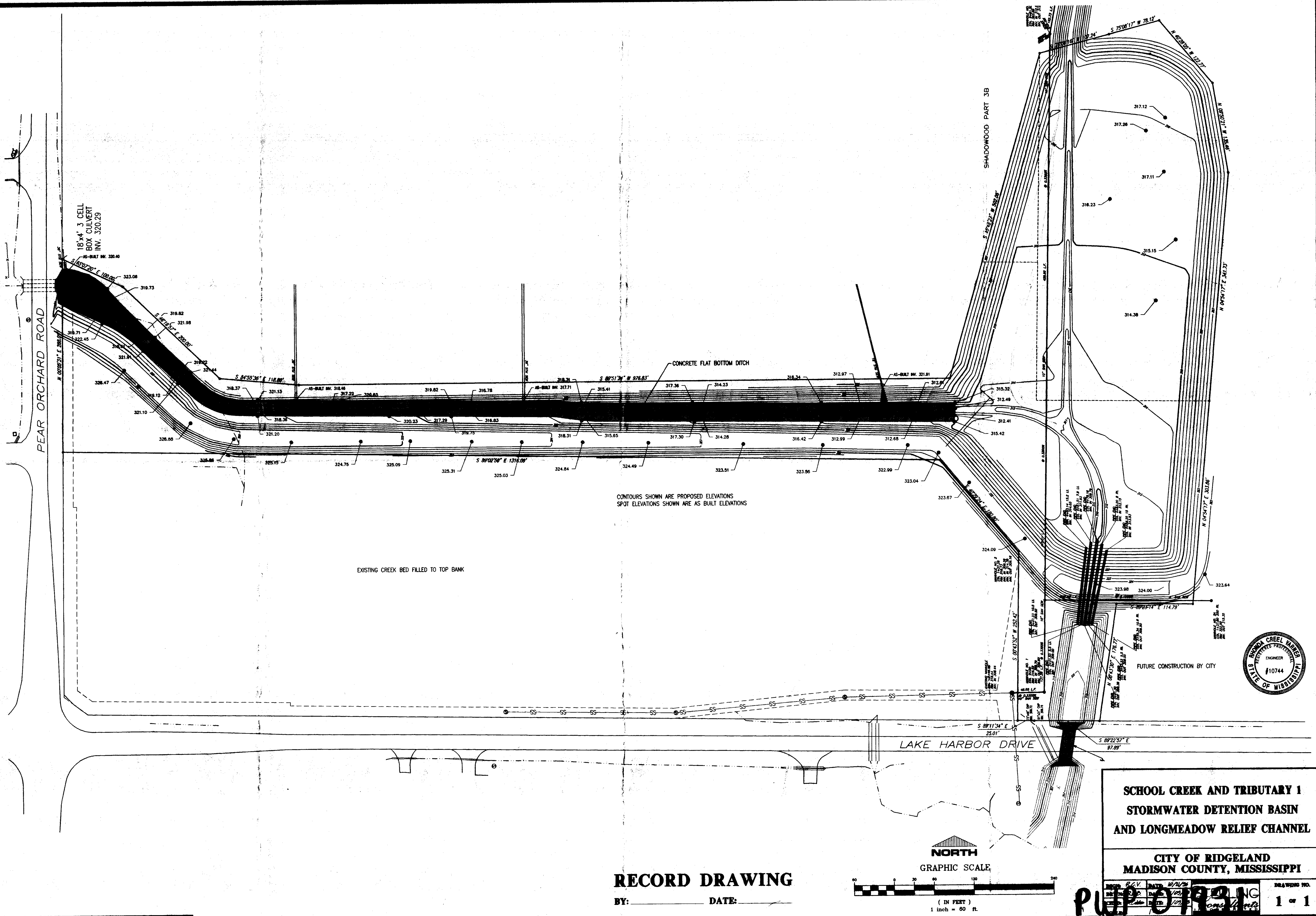


drawings\p-orch\orch-001.dwg Mon Jan 12 09:50:11 1998 R. David Bates - Sterling Consultants, Inc.



CONTOURS SHOWN ARE PROPOSED ELEVATIONS
SPOT ELEVATIONS SHOWN ARE AS BUILT ELEVATIONS

EXISTING CREEK BED FILLED TO TOP BANK

CONCRETE FLAT BOTTOM DITCH

SHADOWWOOD PART 3B

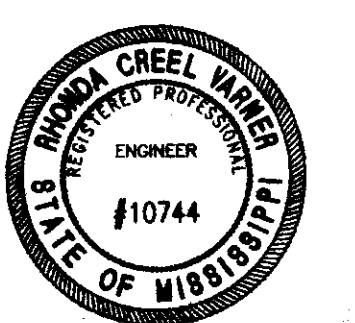
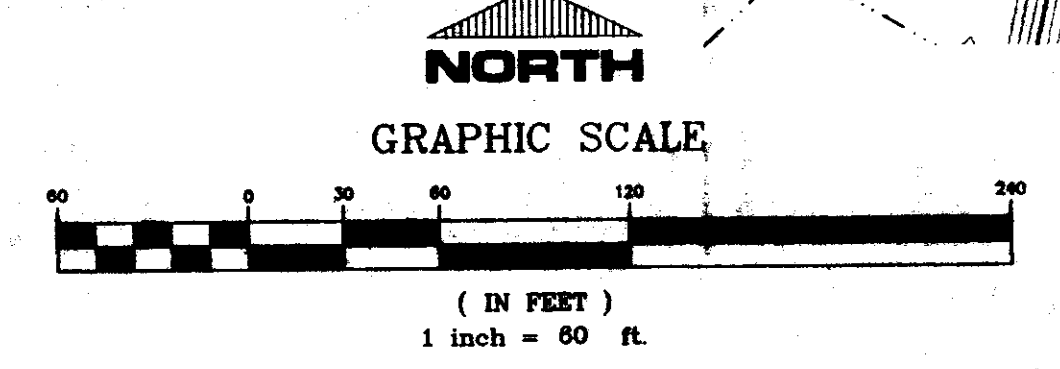
LAKE HARBOR DRIVE

**SCHOOL CREEK AND TRIBUTARY 1
STORMWATER DETENTION BASIN
AND LONGMEADOW RELIEF CHANNEL**

**CITY OF RIDGELAND
MADISON COUNTY, MISSISSIPPI**

RECORD DRAWING

BY: _____ DATE: _____



DRAWING NO. 1 of 1
 DATE 12/21/97
 PUP 01931