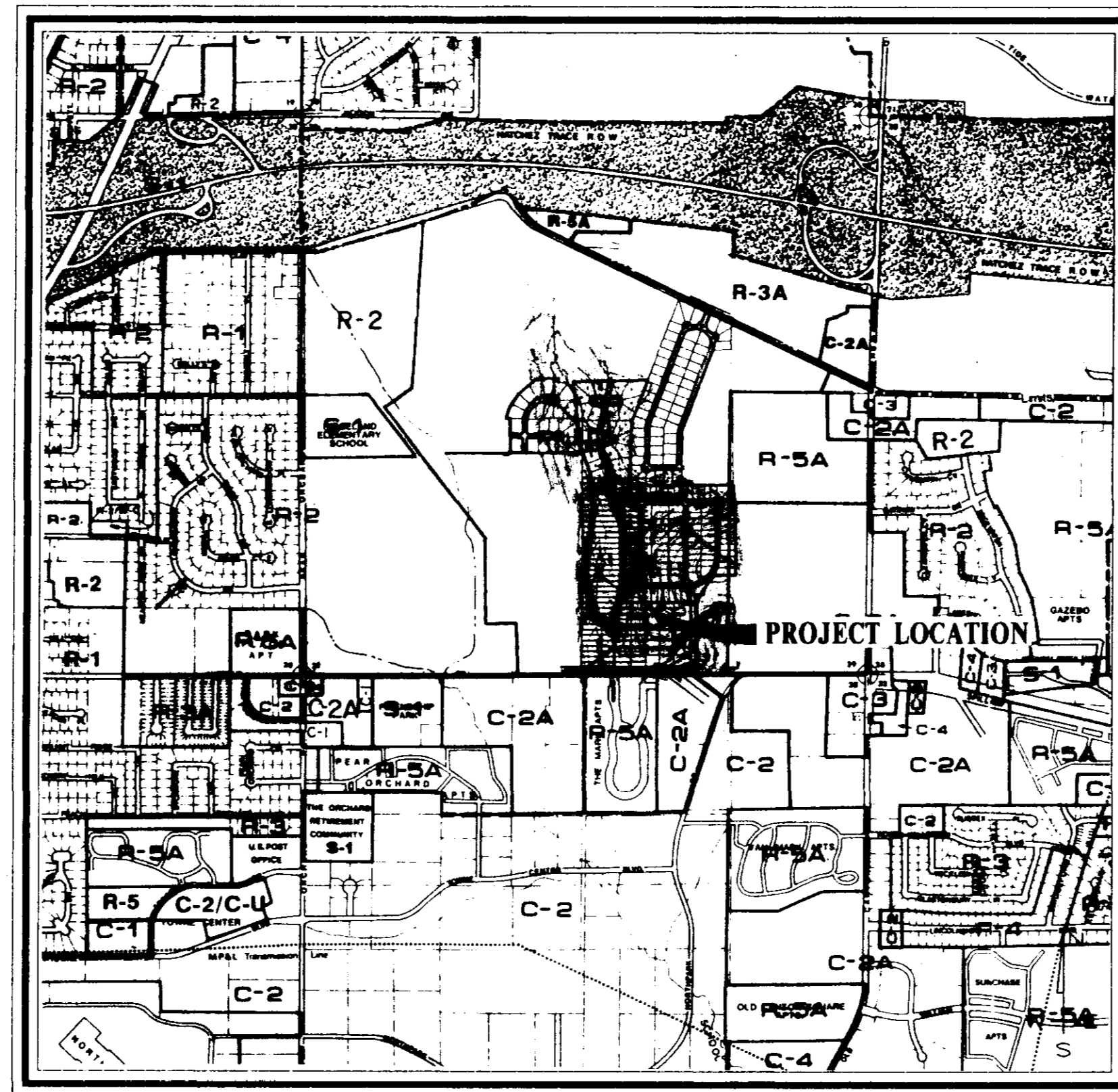
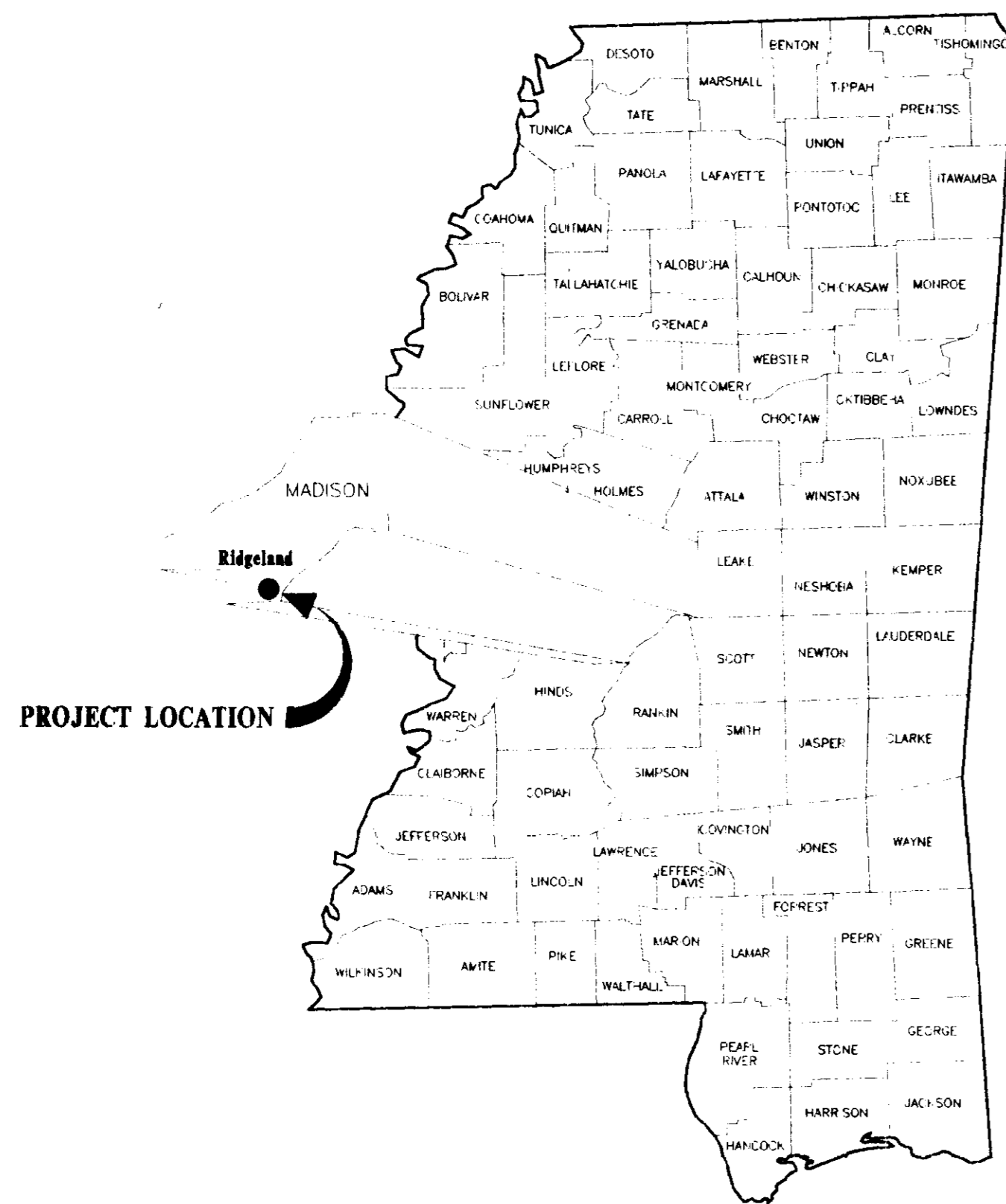


CONSTRUCTION PLANS
FOR
**SCHOOL CREEK TRIBUTARY 2 OUTFALL
SANITARY SEWER INTERCEPTOR**
CITY OF RIDGELAND
MADISON COUNTY, MISSISSIPPI



VICINITY MAP
SCALE: 1"=1200'

TO BE CONSTRUCTED BY
**SHADOWOOD PARTNERS
AND
LAKE HARBOUR ROAD, L.P.**

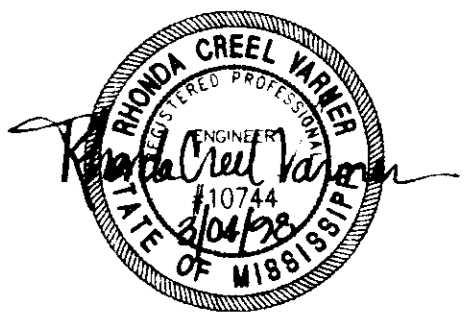


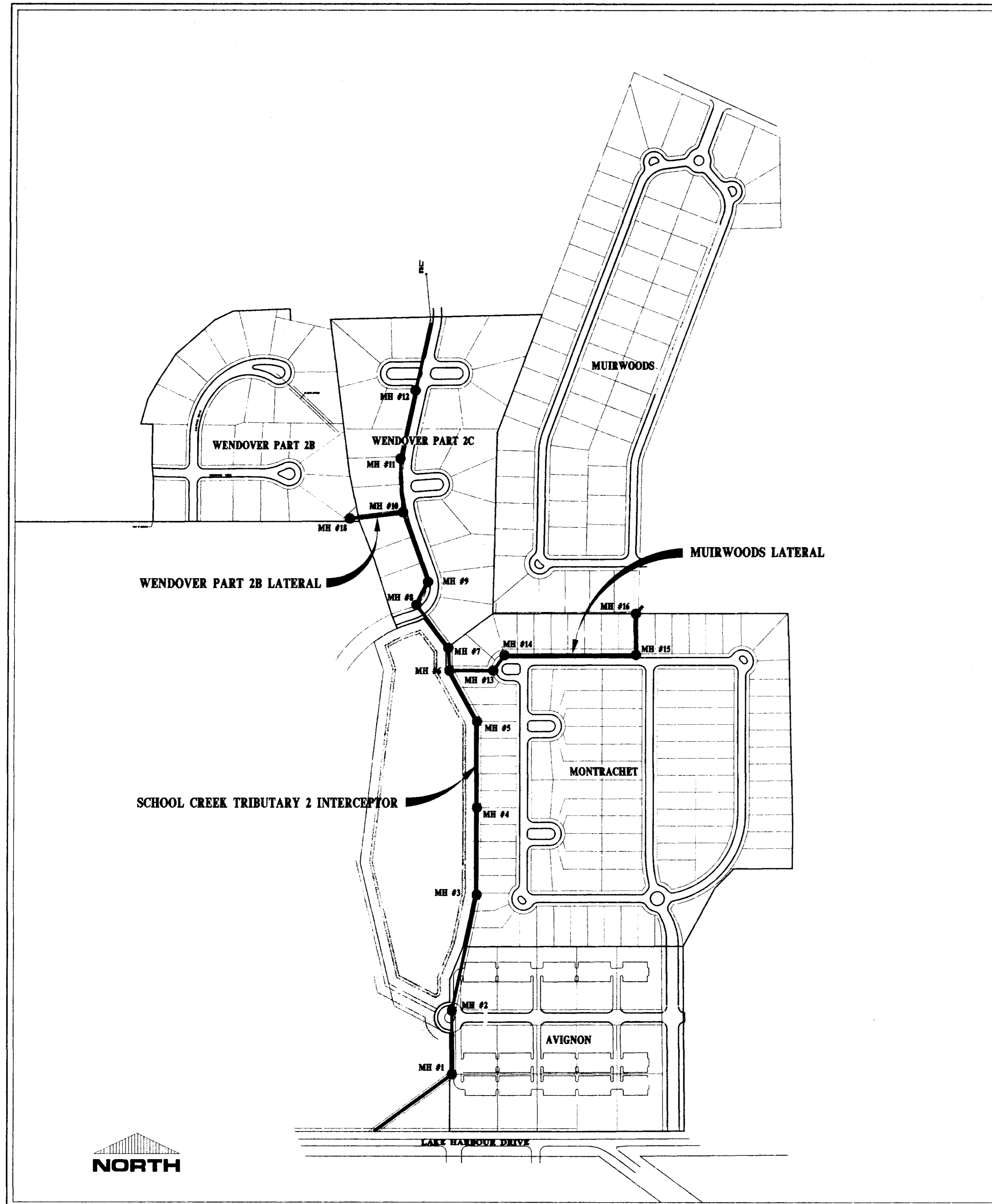
RECORD DRAWING
BY: *K. W. ...* DATE: 3/04/08

Prepared By:

**STERLING
Consultants**
INCORPORATED

PWP-01932





SITE LAYOUT

SCALE: 1"=200'

INDEX TO DRAWINGS

- 1 COVER SHEET
- 2 SITE LAYOUT, GENERAL NOTES AND INDEX TO DRAWINGS
- 3 PLAN AND PROFILE - SANITARY SEWER INTERCEPTOR STA. 0+00 - STA. 14+50
- 4 PLAN AND PROFILE - SANITARY SEWER INTERCEPTOR STA. 14+50 - STA. 28+54.02
- 5 PLAN AND PROFILE - MUIRWOODS SANITARY SEWER LATERAL STA. 0+00 - STA. 8+00.62
- 6 PLAN AND PROFILE - WENDOOVER 2B SANITARY SEWER LATERAL STA. 0+00 - STA. 1+70.94
- 7 STANDARD SEWER DETAILS

GENERAL NOTES

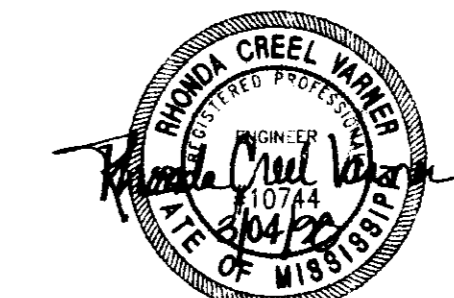
1. ALL SANITARY SEWER CONSTRUCTION TO BE IN ACCORDANCE WITH THE CITY OF RIDGELAND STANDARD SPECIFICATIONS.
2. WHERE A SANITARY SEWER MAIN CROSSES ABOVE A WATER MAIN OR WITHIN 18 INCHES BELOW A WATER MAIN, OR WITHIN 10 FEET ON EITHER SIDE OF A WATER MAIN THE SEWER MAIN SHALL BE CONSTRUCTED OF DUCTILE IRON.
3. SEWER MAINS SHALL BE 10" OR 8" SDR-26 PVC, AS INDICATED ON PLANS.
4. BACK FILL OF ALL TRENCHES UNDER PROPOSED PAVEMENTS AND CURB AND GUTTER SHALL BE MECHANICALLY COMPACTED IN 9" MAXIMUM LOOSE LIFTS TO A MINIMUM OF 95% STANDARD PROCTOR PEAK DRY DENSITY.
5. DEFLECTION TEST SHALL BE PERFORMED ON ALL FLEXIBLE SEWER PIPE. THE TEST SHALL BE CONDUCTED AFTER THE FINAL BACK FILL HAS BEEN IN PLACE AT LEAST 30 DAYS. DEFLECTION TEST SHALL BE RUN USING A RIGID BALL OR MANDREL HAVING A DIAMETER EQUAL TO 95% OF THE INSIDE DIAMETER OF THE PIPE. THE TEST SHALL BE PERFORMED WITHOUT MECHANICAL PULLING DEVICES.
6. THE CONSTRUCTION EXIT SHALL BE MAINTAINED IN A CONDITION WHICH WILL PREVENT TRACKING OR FLOW OF MUD ONTO PUBLIC ROADWAYS. ALL MATERIALS SPILLED, DROPPED, WASHED OR TRACKED FROM VEHICLES OR SITE ONTO STREETS MUST BE REMOVED IMMEDIATELY.

MATERIAL REQUIREMENTS

- MAIN & SERVICE -- PVC, SDR-26, ASTM D-3034 OR DUCTILE IRON, PROTECTO 401 CERAMIC EPOXY LINED.
- JOINTS -- SLIP ON W/LOCKED-IN RUBBER GASKET, ASTM F-477.
- MANHOLES -- PRE CAST CONCRETE, ASTM C-478. COAL TAR EPOXY COATING. REQUIRED ON INTERIOR AND EXTERIOR OF MANHOLE SECTIONS AND ON MANHOLE STEPS.
- PIPE BCOITS -- KOR-N-SEAL MOLDED RUBBER CONNECTORS, OR EQUAL.
- FRAME & COVER -- CAST IRON, ASTM A-78 OR EQUAL.

RECORD DRAWING

BY: *R. Kanner* DATE: 3/04/98



**SCHOOL CREEK
TRIBUTARY 2 OUTFALL
SANITARY SEWER INTERCEPTOR**

**SITE LAYOUT, GENERAL NOTES
AND INDEX TO DRAWINGS**

**CITY OF RIDGELAND
MADISON COUNTY, MISSISSIPPI**

DESIGN: RGV	DATE: 02/19/97	STERLING Consultants	DRAWING NO. 2 of 7
DRAWN: RDP	DATE: 02/19/97		
CHECK: RGV	DATE: 02/19/97		
SCALE: AS SHOWN			

AS-BUILT DRAWINGS	FSM 02/16/98
ADDED MATERIAL REQUIREMENTS	RDP 02/19/97
REVISION	BY DATE

RECORD DRAWING

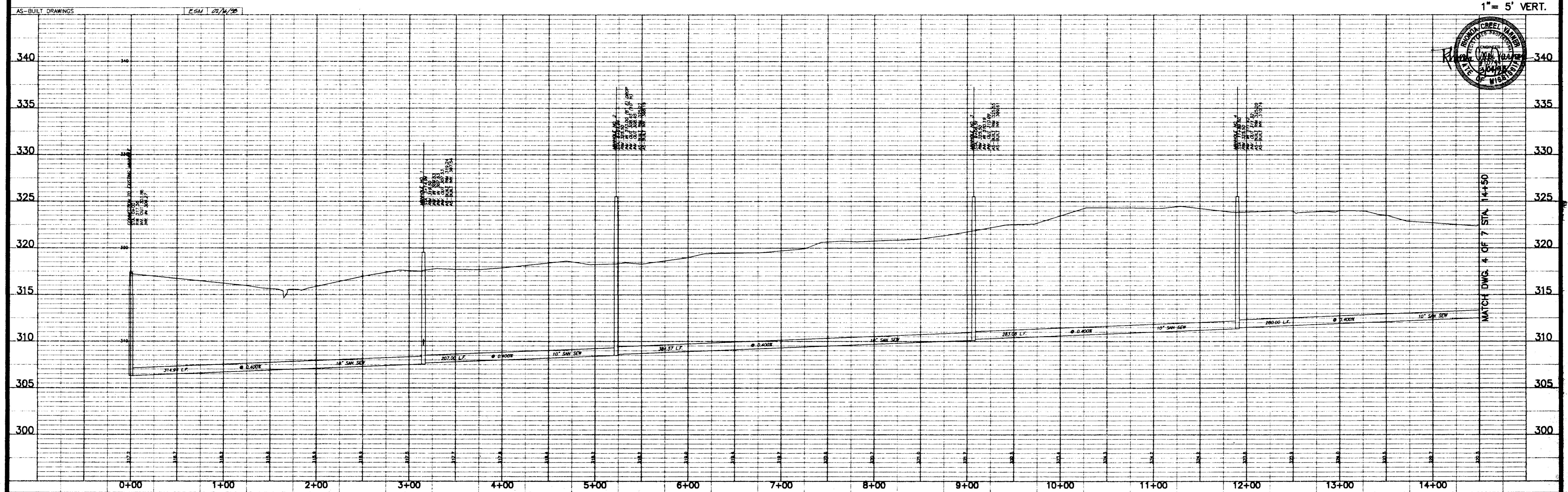
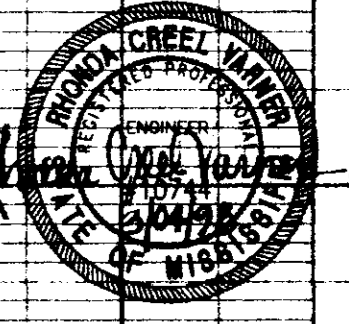
BY: *R. Nanna* DATE: 3/04/05

FUTURE LAKE AND STORMWATER DETENTION FACILITY

FUTURE SUBDIVISION DEVELOPMENT (MONTRACHET)

FUTURE SUBDIVISION DEVELOPMENT (AVIGNON)

SCALE 1" = 50' HORIZ.
1" = 5' VERT.



SCHOOL CREEK
TRIBUTARY 2 OUTFALL
SANITARY SEWER INTERCEPTOR

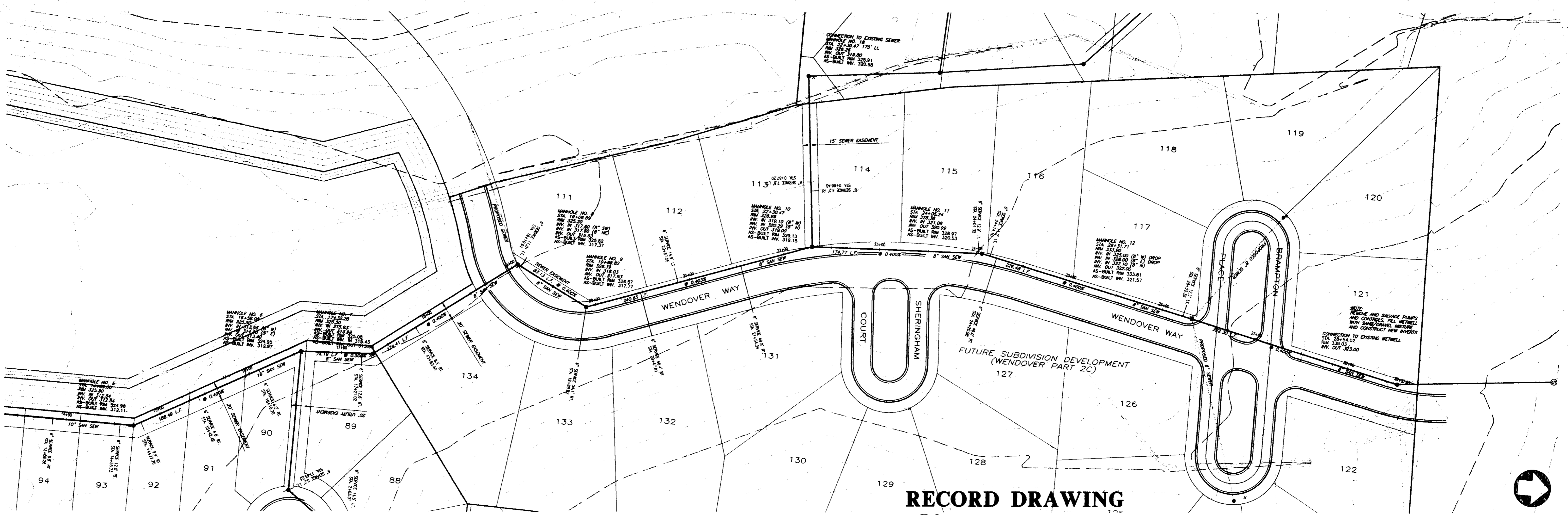
PLAN AND PROFILE - SCHOOL CREEK SANITARY SEWER OUTFALL
STA. 0+00 - STA. 14+50

Prepared For:
CITY OF RIDGELAND
MADISON COUNTY, MISSISSIPPI

Designed By:	REV	DATE:	03/05/01
Drawn By:	RDP	DATE:	03/05/01
Checked By:	REV	DATE:	03/05/01
Scale:	1"=50' HORIZ.	1"=5' VERT.	

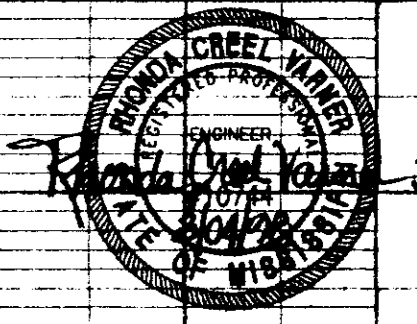
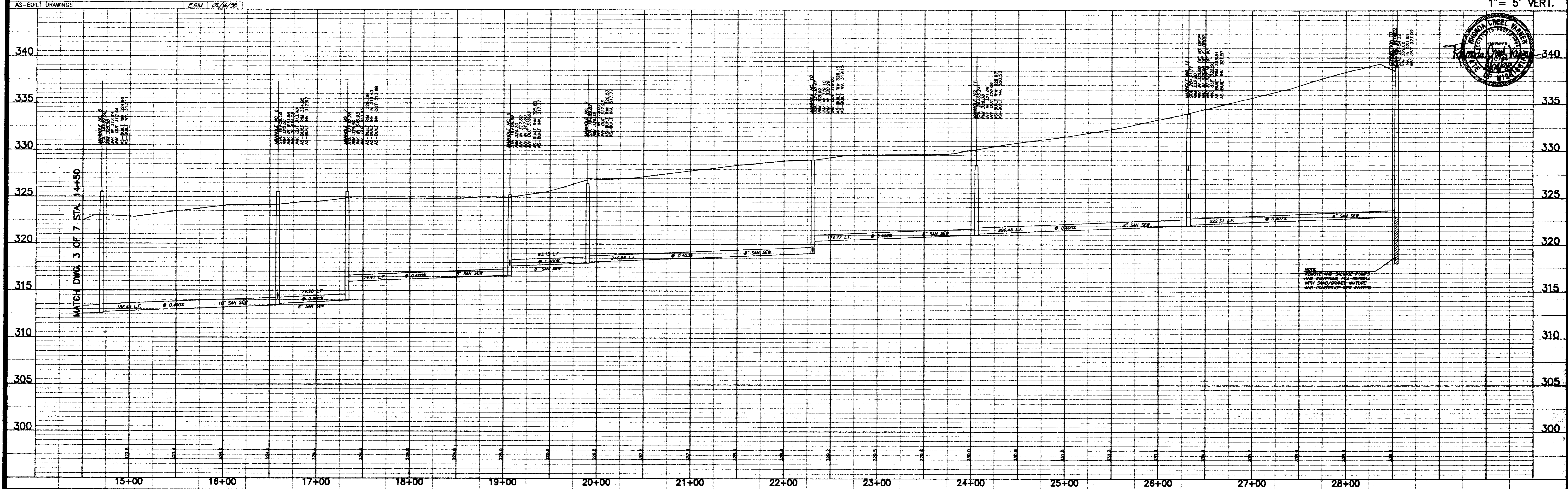


Drawing No.
3 of 7



RECORD DRAWING
 BY: R. N. Nunn DATE: 3/04/92

SCALE 1"=50' HORIZ.
 1"= 5' VERT.



SCHOOL CREEK
 TRIBUTARY 2 OUTFALL
 SANITARY SEWER INTERCEPTOR

PLAN AND PROFILE - SANITARY SEWER INTERCEPTOR
 STA. 14+50 - STA. 28+54.02

Prepared For:
 CITY OF RIDGELAND
 MADISON COUNTY, MISSISSIPPI

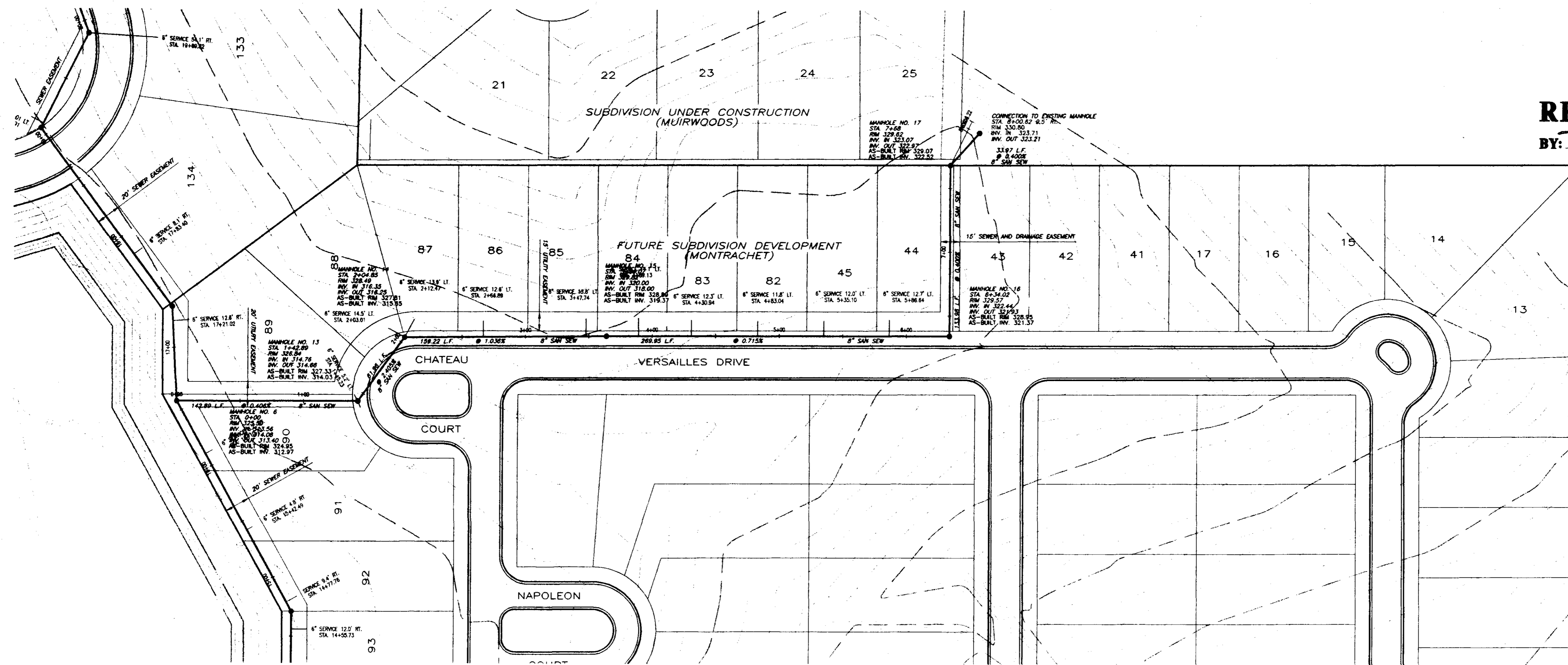
Designed By:	RCV	DATE:	01/15/91
Drawn By:	RDP	DATE:	02/15/91
Checked By:	RCV	DATE:	02/15/91
Scale:	1"=50' HORIZ.	1"=5' VERT.	



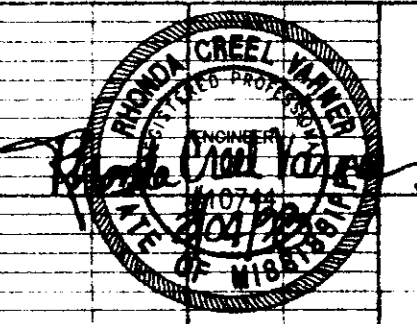
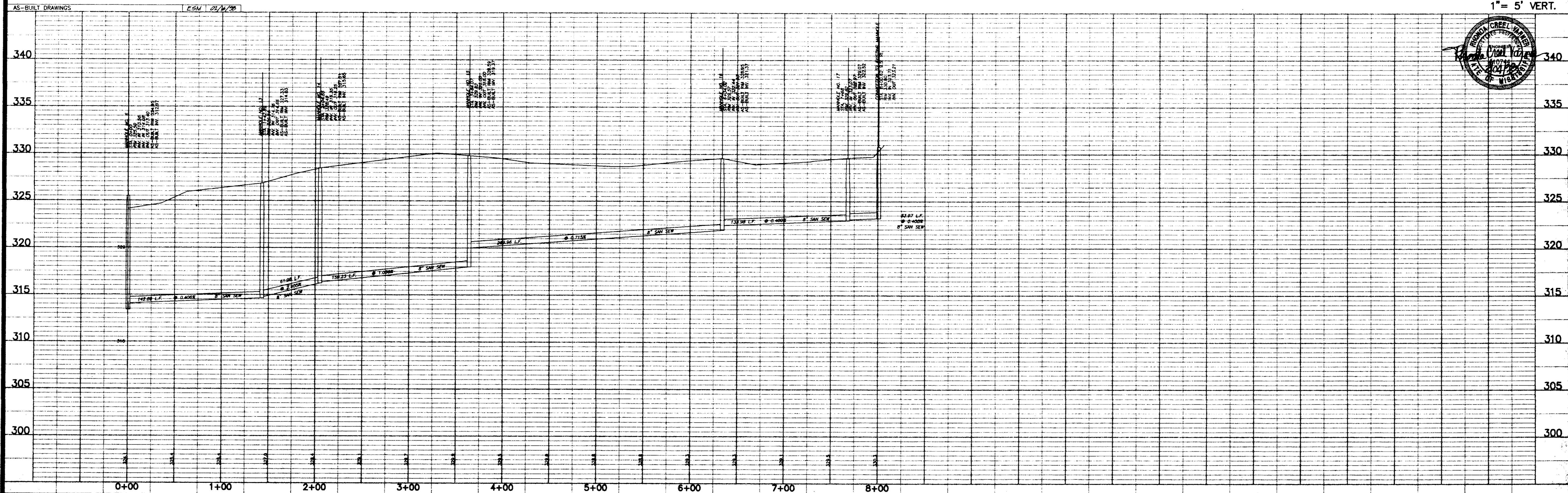
Drawing No.
4 of 7

RECORD DRAWING

BY: *R. Wanner* DATE: *5/10/98*



SCALE 1"=50' HORIZ.
1"= 5' VERT.



SCHOOL CREEK
TRIBUTARY 2 OUTFALL
SANITARY SEWER INTERCEPTOR

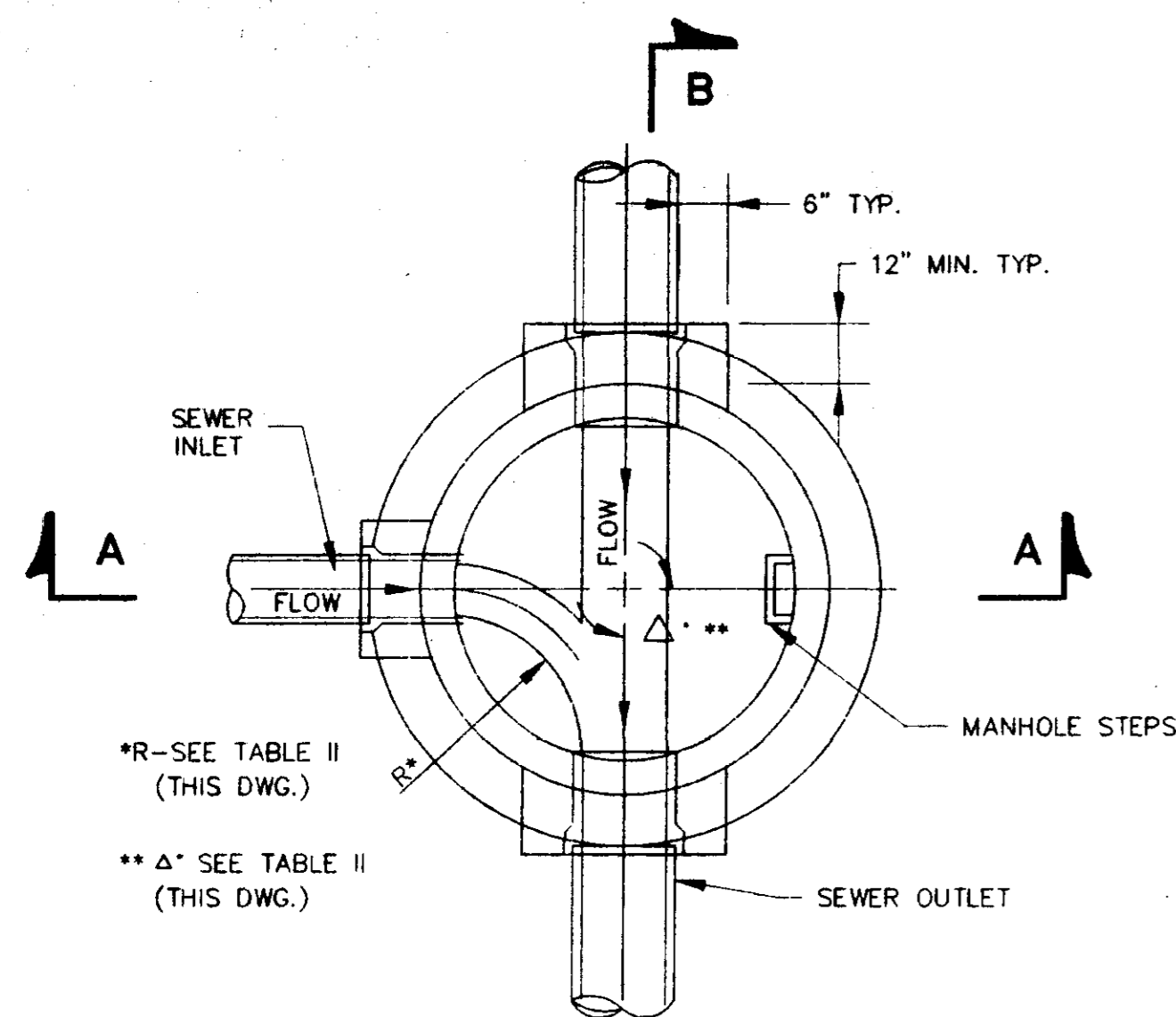
PLAN AND PROFILE - MUIRWOODS SANITARY SEWER LATERAL
STA. 0+00 - STA. 8+00.62

Prepared For:
CITY OF RIDGELAND
MADISON COUNTY, MISSISSIPPI

Designed By:	REV.	DATE:	02/19/97
Drawn By:	RDB	DATE:	02/19/97
Checked By:	REV.	DATE:	02/19/97
Scale:	1"=50' HORIZ.	1"=5' VERT.	



Drawing No.
5 of 7

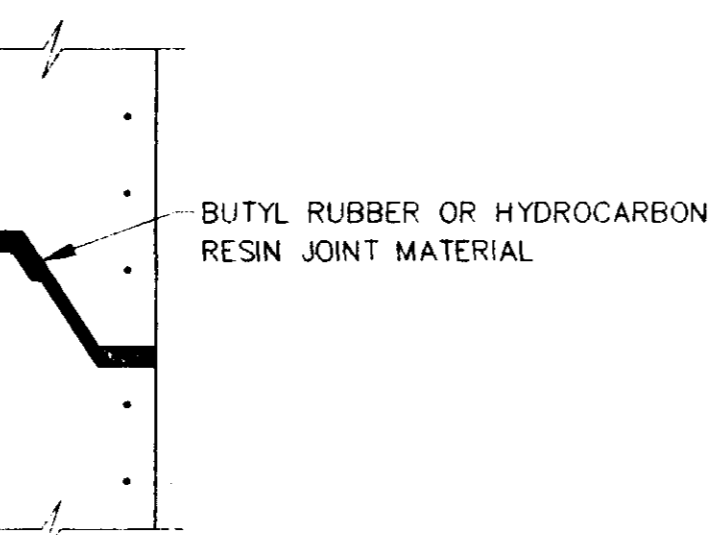


*R-SEE TABLE II (THIS DWG.)
 ** Δ- SEE TABLE II (THIS DWG.)

**SECTIONAL PLAN
 STANDARD MANHOLE**
 NOT TO SCALE

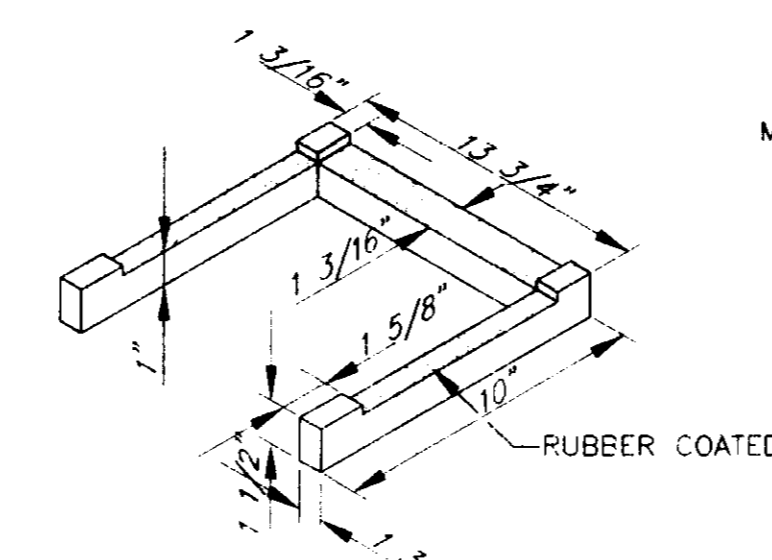
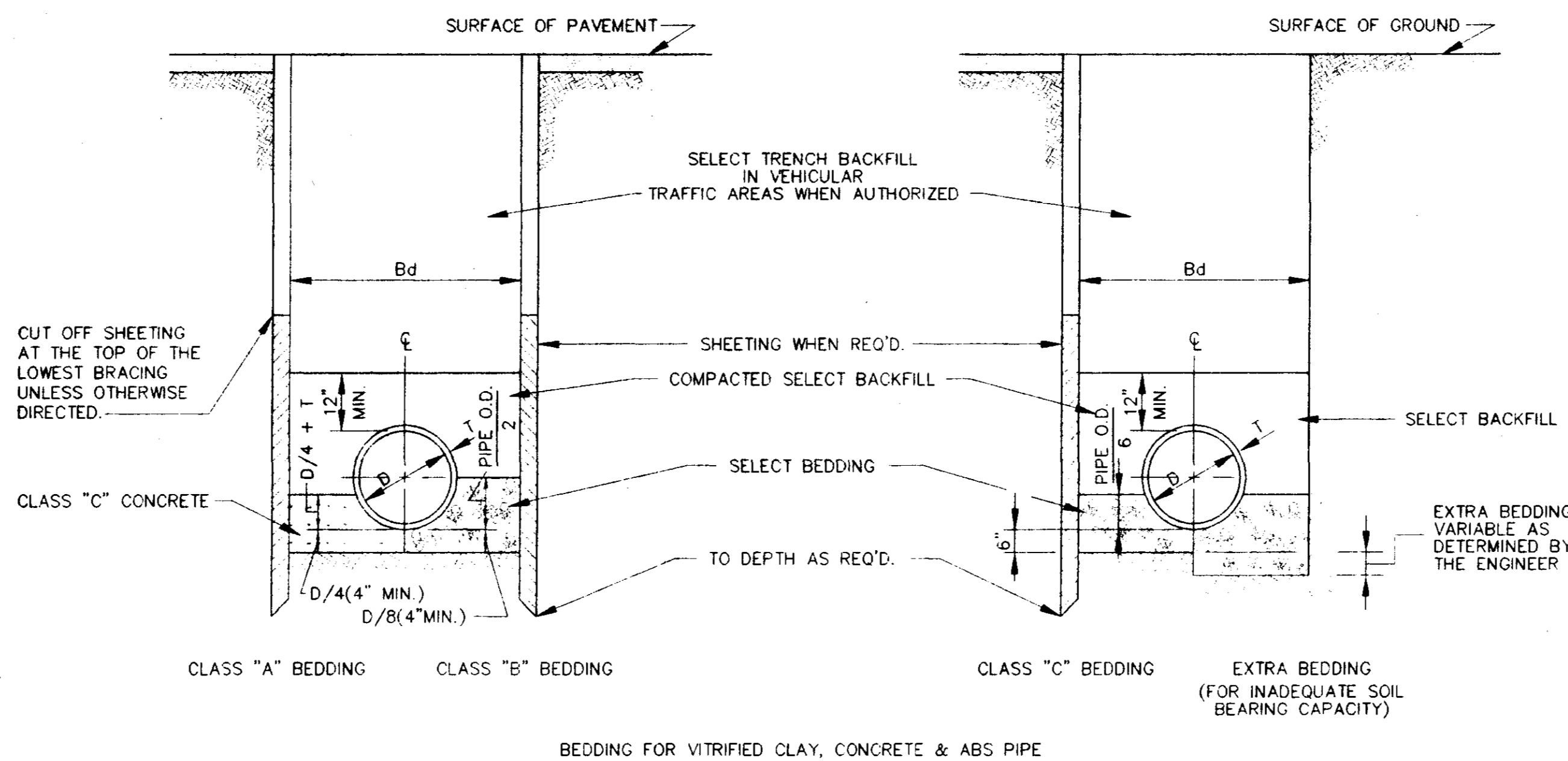
TABLE II GOVERNING DIMENSIONS FOR MANHOLES				
PIPE SIZE	Δ ANGLE	BASE DIAMETER **	"R" *	
8" THRU 12"	0° TO 90°	4'	1'-6"	
15"	0° TO 60°	4'	1'-10"	
15"	60° TO 90°	4'	1'-10"	
18"	0° TO 60°	4'	2'-3"	
18"	60° TO 90°	4'	1'-10"	
21"	0° TO 60°	4'	2'-7"	
21"	60° TO 90°	5'	2'-4"	
24"	0° TO 45°	4'	3'-0"	
24"	45° TO 90°	5'	2'-3"	
30"	0° TO 60°	5'	3'-9"	
30"	60° TO 90°	6'	2'-8"	
36"	0° TO 60°	6'	4'-6"	
36"	60° TO 90°	7'	3'-11"	
42"	0° TO 60°	7'	5'-3"	
42"	60° TO 90°	8'	4'-7"	
48"	0° TO 60°	8'	6'-0"	
48"	60° TO 90°	9'	5'-3"	

* SEE SECTIONAL PLAN, STANDARD MANHOLE
 ** PRECAST MANHOLE

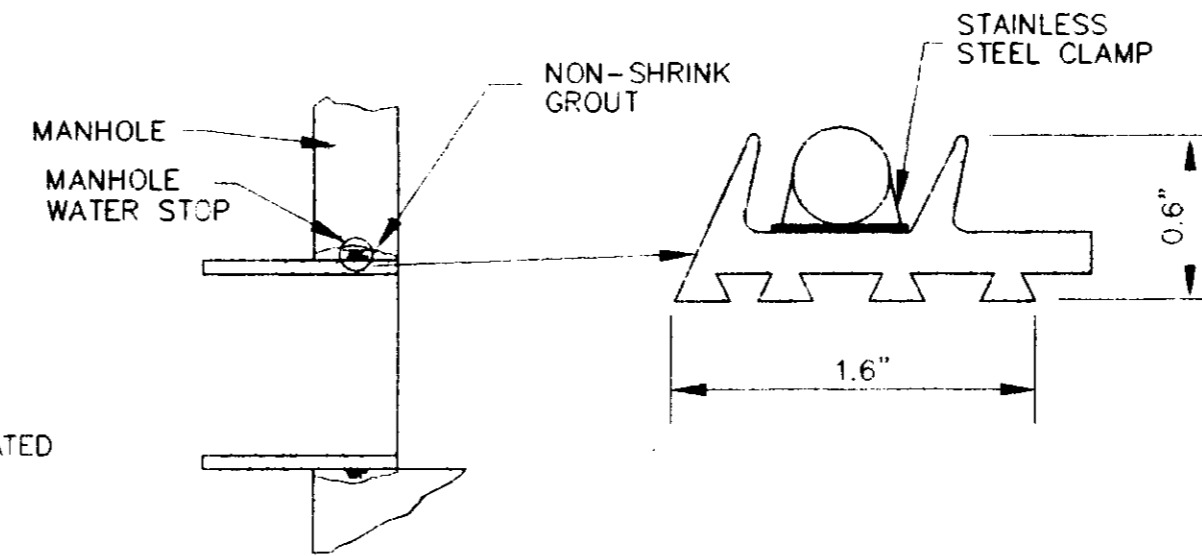


**TYPICAL PRECAST CONCRETE
 MANHOLE JOINT DETAIL**
 N.T.S.

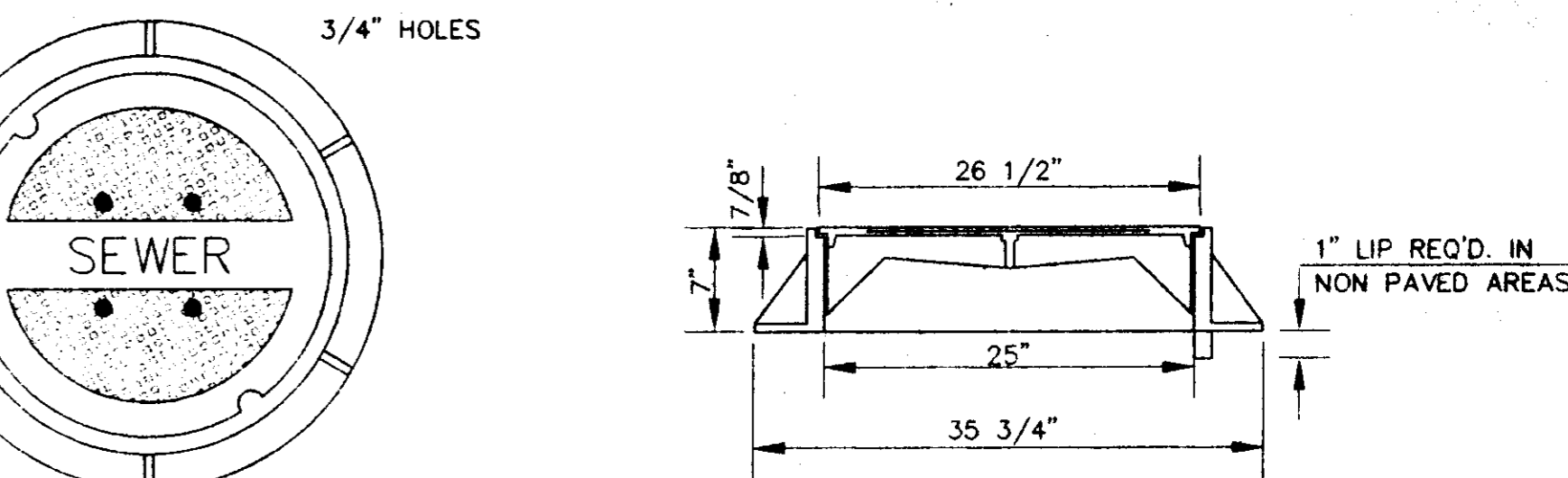
TYPICAL TRENCH DETAILS
 NOT TO SCALE



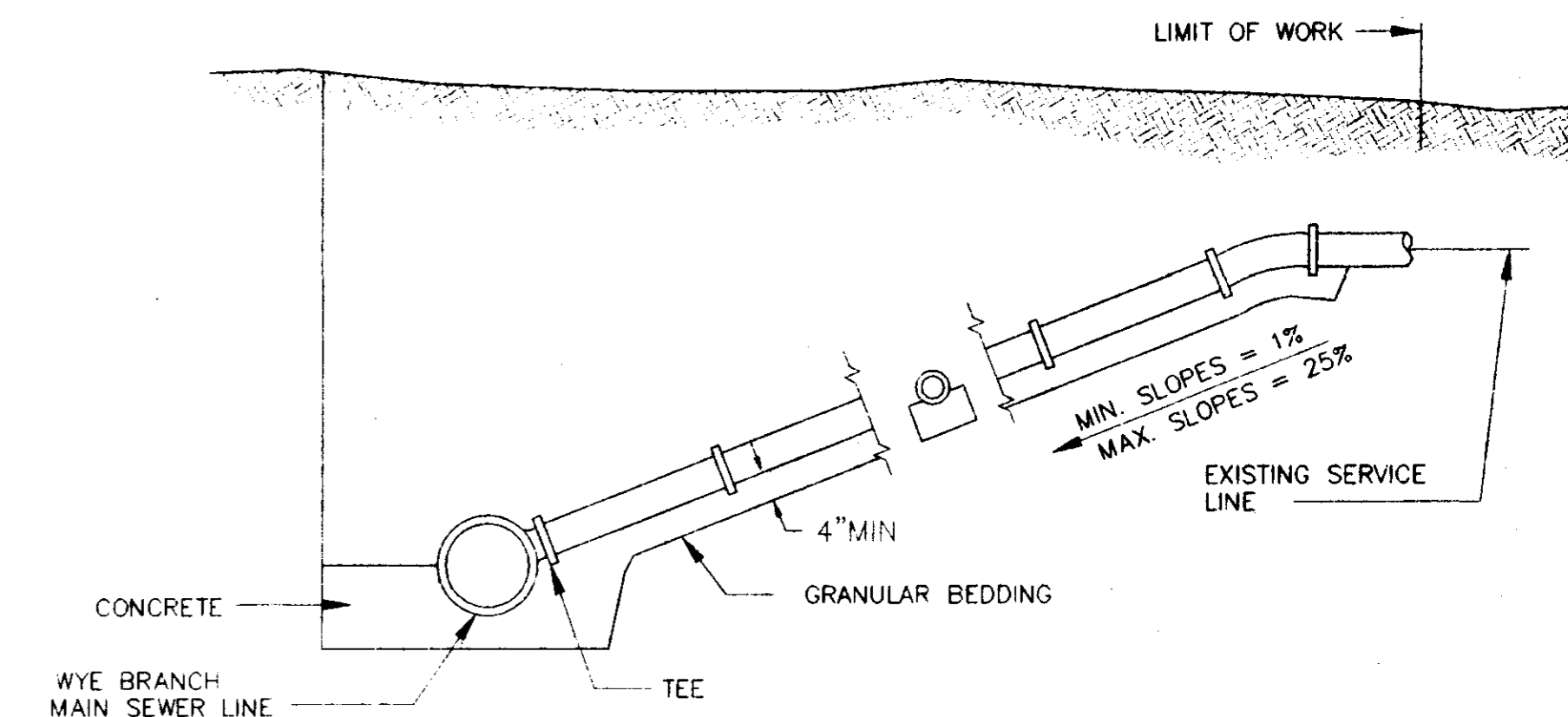
MANHOLE STEP DETAIL
 NOT TO SCALE



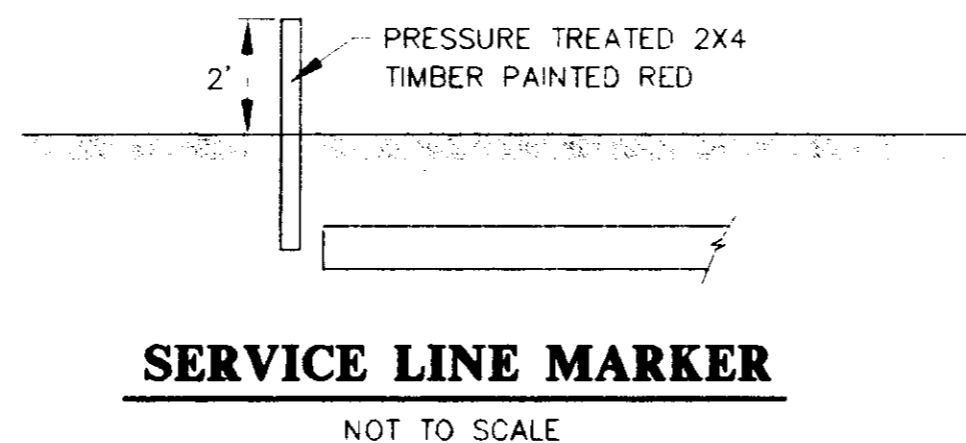
**TYPICAL MANHOLE WATER STOP
 FOR ABS, CLAY OR PVC PIPE**
 EXISTING AND "STRADDLE" MANHOLES
 N.T.S.



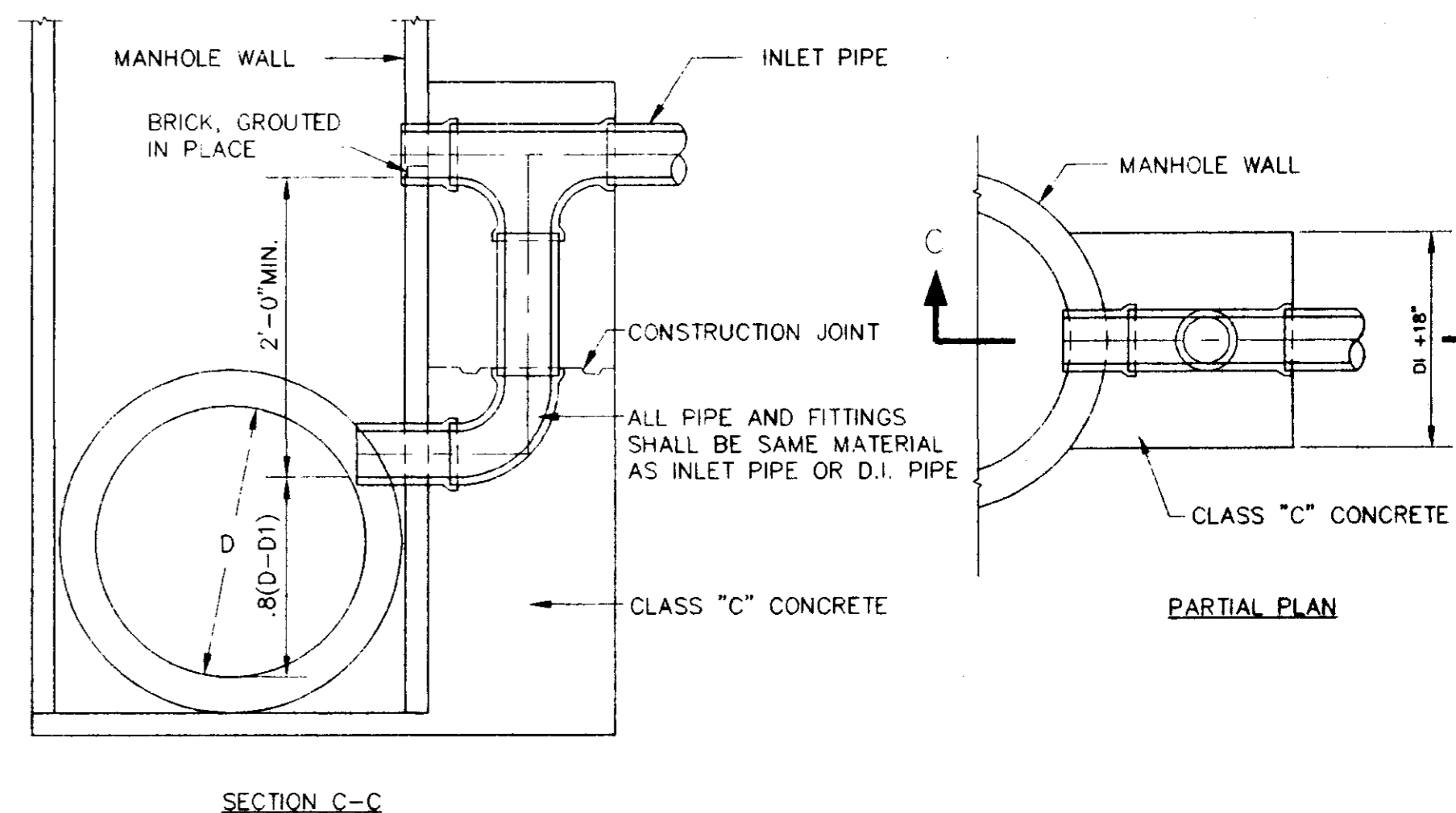
TOP PLAN OF COVER
SECTION
 FRAME & COVER WEIGHT 420 LBS.
STANDARD MANHOLE FRAME AND COVER
 N.T.S.



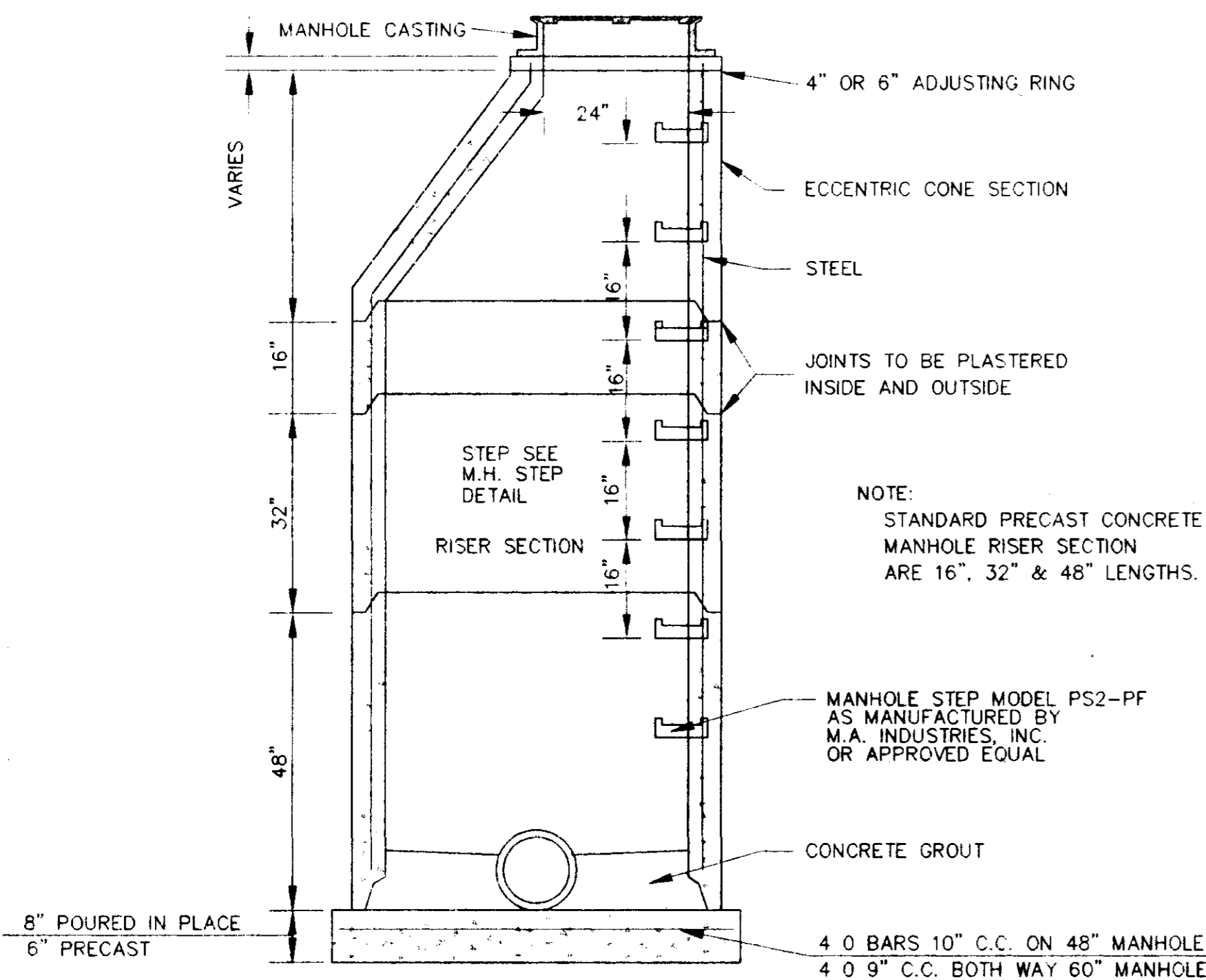
TYPICAL SERVICE LINE CONNECTION
 NOT TO SCALE



SERVICE LINE MARKER
 NOT TO SCALE



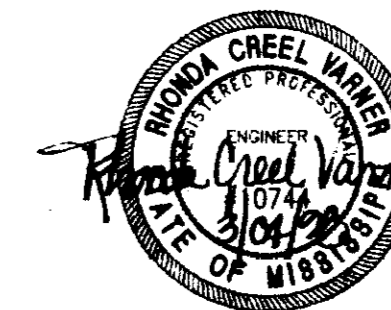
TYPICAL VERTICAL DROP INLET AT MANHOLE
 N.T.S.



SECTION OF PRECAST CONCRETE MANHOLE
 N.T.S.

RECORD DRAWING

BY: *R. W. ...* DATE: 3/04/98



**SCHOOL CREEK
 TRIBUTARY 2 OUTFALL
 SANITARY SEWER INTERCEPTOR**

**STANDARD
 SEWER DETAILS**

**CITY OF RIDGELAND
 MADISON COUNTY, MISSISSIPPI**

DESIGN: RCV DATE: 08/19/97
 DRAWING: RCV DATE: 08/19/97
 CHECK: RCV DATE: 08/19/97
 SCALE: AS SHOWN

**STERLING
 Consultants**

DRAWING NO. **7 of 7**

D:\P\GDCH\SCHL-002.dwg, Tue Mar 03 11:44:42 1998, Share McGee - Sterling Consultants, Inc.