

# CHANNEL IMPROVEMENTS

## TRIBUTARY 1 TO SCHOOL CREEK

MAYOR:

GENE F. MCGEE

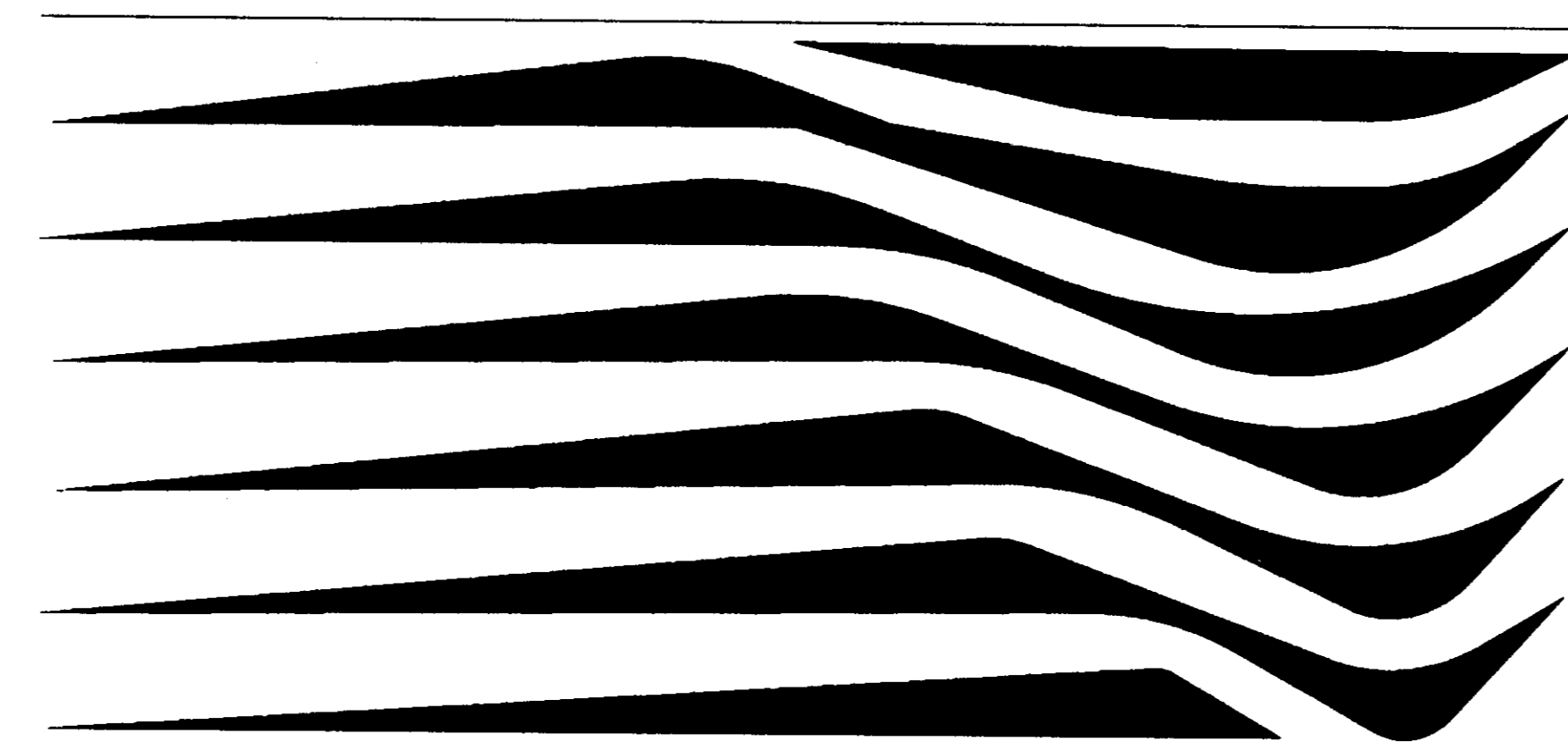
ALDERMEN:

ANN HURD  
 LISA WALTERS  
 CAROLE DAVIS  
 LARRY ROBERTS  
 SCOTT JONES  
 LINDA TRUNZLER  
 GERALD STEEN

CITY STAFF:

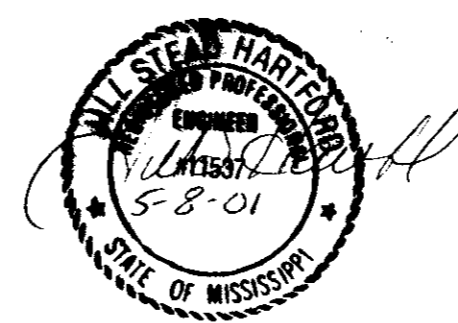
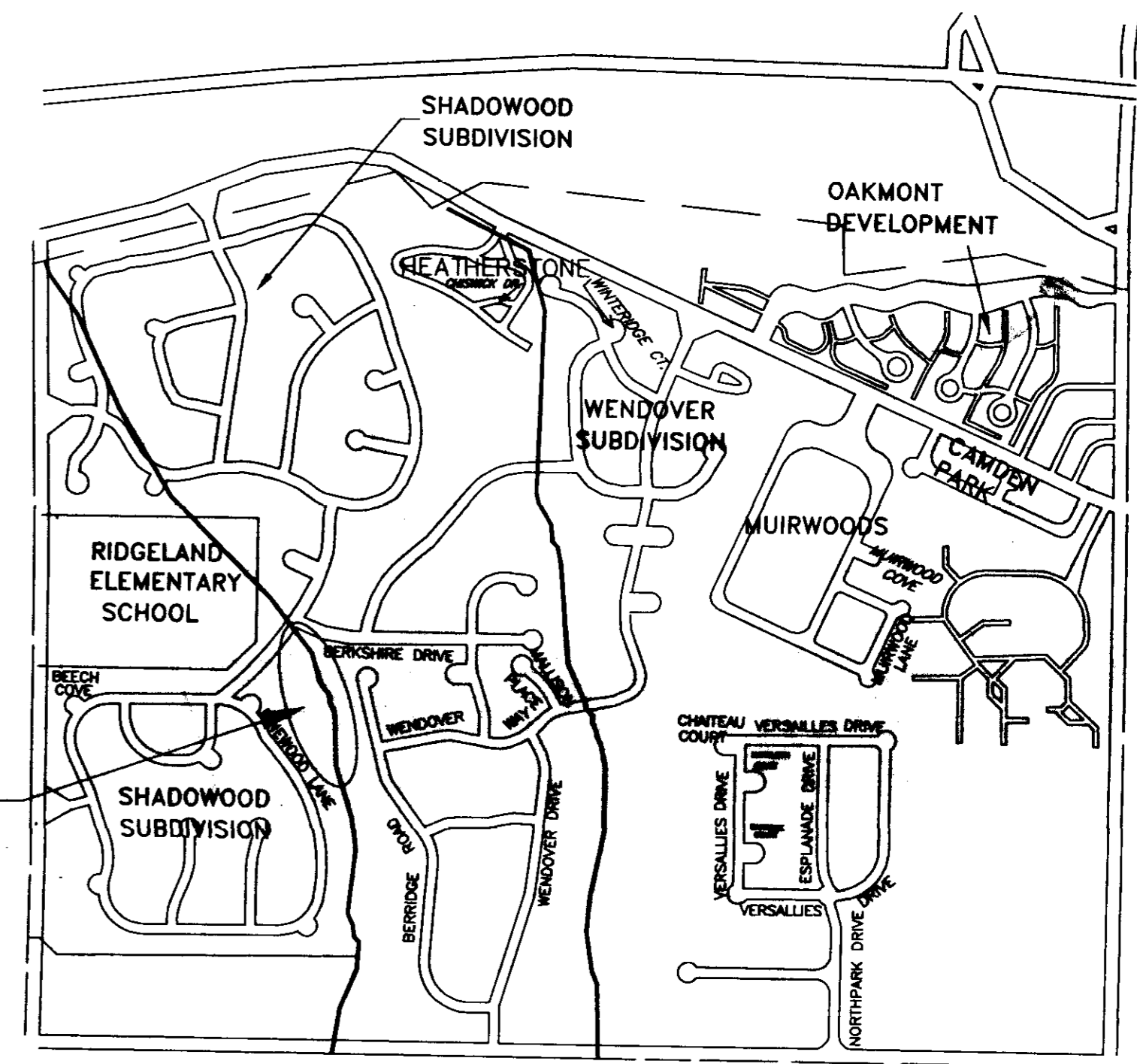
PUBLIC WORKS  
 DIRECTOR:  
 SAM VINSON, P.E.  
 ASST. PUBLIC WORKS  
 DIRECTOR:  
 SID HAWTHORNE

THE CITY OF



RIDGELAND

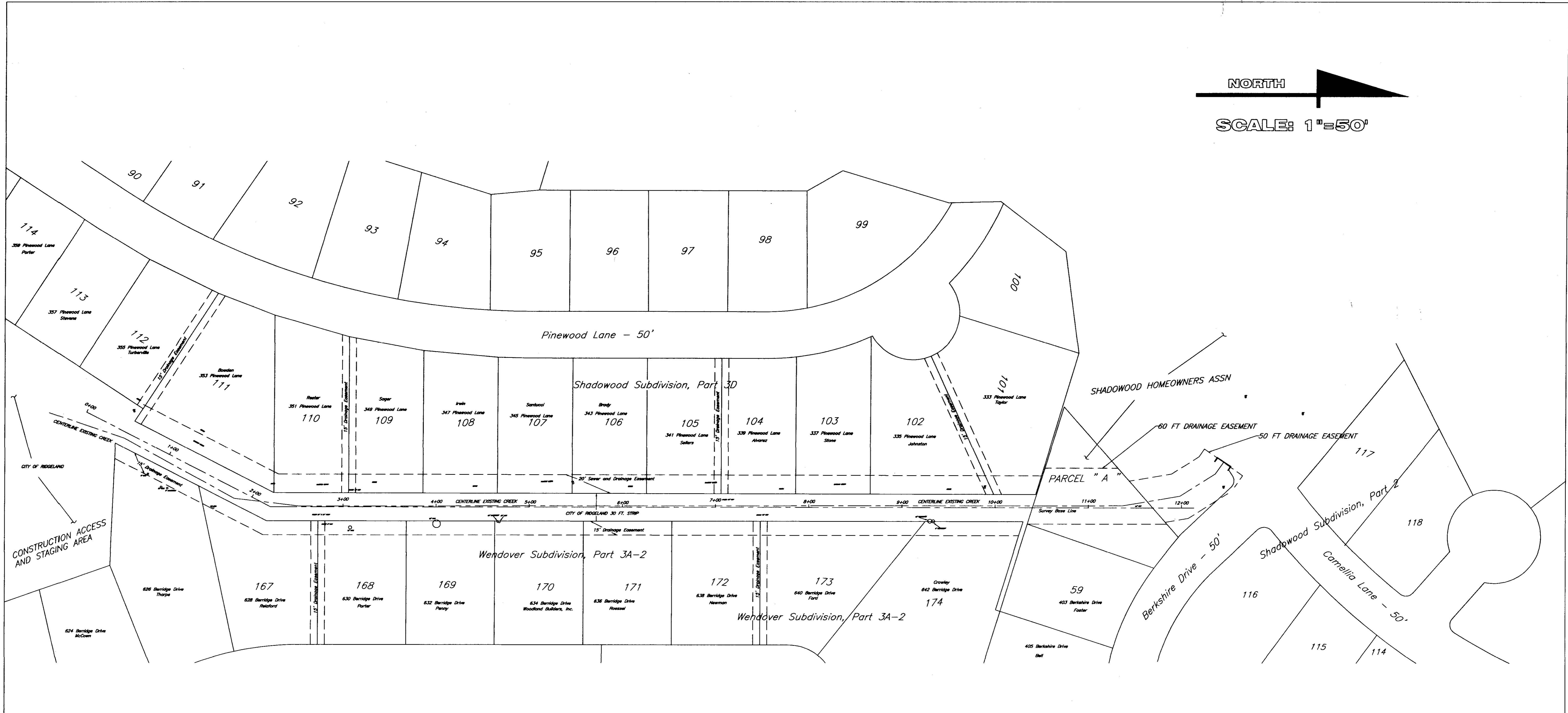
| INDEX TO DRAWINGS               |           |
|---------------------------------|-----------|
| TITLE                           | SHEET NO. |
| COVER SHEET                     |           |
| PROPERTY OWNER                  | 1 OF 6    |
| PLAN VIEW<br>STA. 0+00 TO 6+25  | 2 OF 6    |
| PLAN VIEW<br>STA. 6+25 TO 12+72 | 3 OF 6    |
| CROSS SECTIONS                  | 4 OF 6    |
| MISCELLANEOUS DETAILS           | 5 OF 6    |
|                                 | 6 OF 6    |



MAY 2001

PWP-01944

NORTH  
 SCALE: 1"=50'



CHANNEL IMPROVEMENTS  
 TRIBUTARY 1 TO SCHOOL CREEK  
 MAY 2001

PROPERTY OWNERSHIP MAP

DRAWN BY:  
 JSH  
 CHECKED BY:  
 RLT  
 DESIGNED BY:  
 JSH



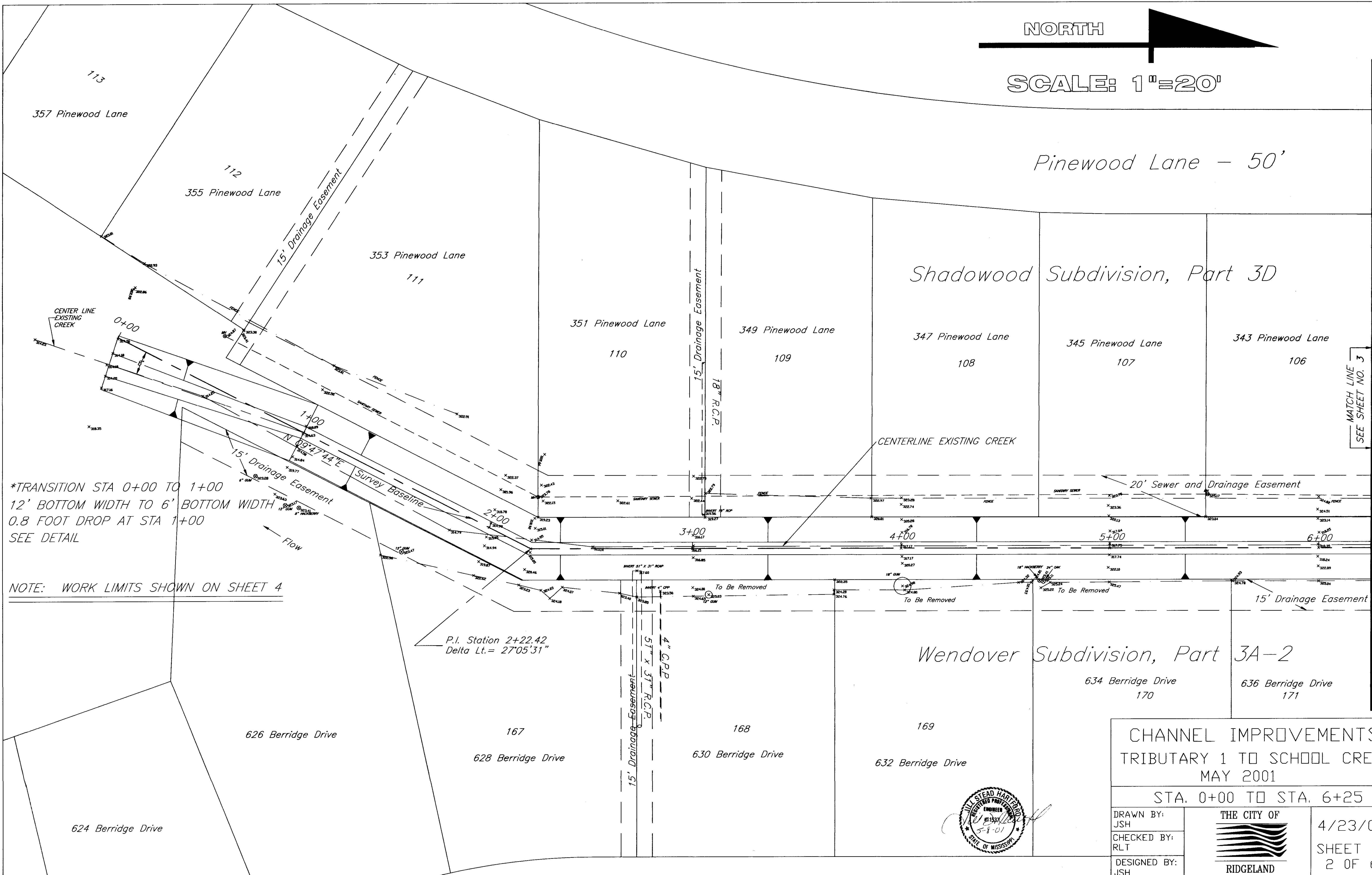
4/23/01  
 SHEET NO.  
 1 OF 6

NORTH

SCALE: 1"=20'

Pinewood Lane - 50'

Shadowood Subdivision, Part 3D



\*TRANSITION STA 0+00 TO 1+00  
 12' BOTTOM WIDTH TO 6' BOTTOM WIDTH  
 0.8 FOOT DROP AT STA 1+00  
 SEE DETAIL

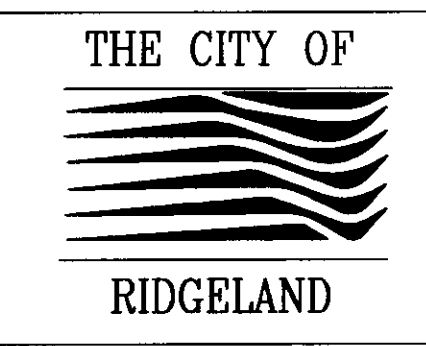
NOTE: WORK LIMITS SHOWN ON SHEET 4

P.I. Station 2+22.42  
 Delta Lt. = 27°05'31"

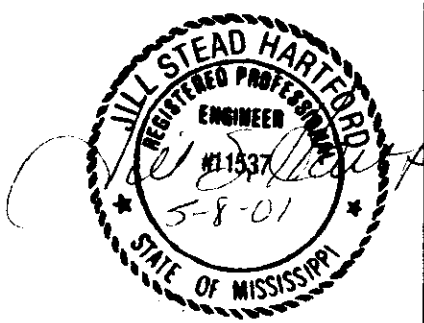
CHANNEL IMPROVEMENTS  
 TRIBUTARY 1 TO SCHOOL CREEK  
 MAY 2001

STA. 0+00 TO STA. 6+25

DRAWN BY:  
 JSH  
 CHECKED BY:  
 RL  
 DESIGNED BY:  
 JSH



4/23/01  
 SHEET NO.  
 2 OF 6



MATCH LINE  
 SEE SHEET NO. 3



T.B.M. ELEV. 328.47  
CHISELED SQUARE  
NE CORNER HEADWALL

Pinewood Lane - 50'

Shadowood Subdivision, Part 3D

101  
333 Pinewood Lane

Common Area

Private Street

105  
341 Pinewood Lane

104  
339 Pinewood Lane

103  
337 Pinewood Lane

102  
335 Pinewood Lane

SEE SHEET NO. 2  
MATCH LINE

15' Drainage Easement  
36" R.C.P.

20' Sewer and Drainage Easement

CENTERLINE EXISTING CREEK

TRANSITION TO EXISTING  
CULVERTS  
SEE DETAIL

R = 81'

Survey Base Line

N 17°17'47"W

Survey Base Line

15' Drainage Easement

15' Drainage Easement

NOTE: WORK LIMITS SHOWN ON SHEET 4

172  
638 Berridge Drive

173  
640 Berridge Drive

174  
642 Berridge Drive

403 Berkshire Drive

Berkshire Drive - 50'

116

Wendover Subdivision, Part 3A-2

405 Berkshire Drive



SCALE: 1" = 20'

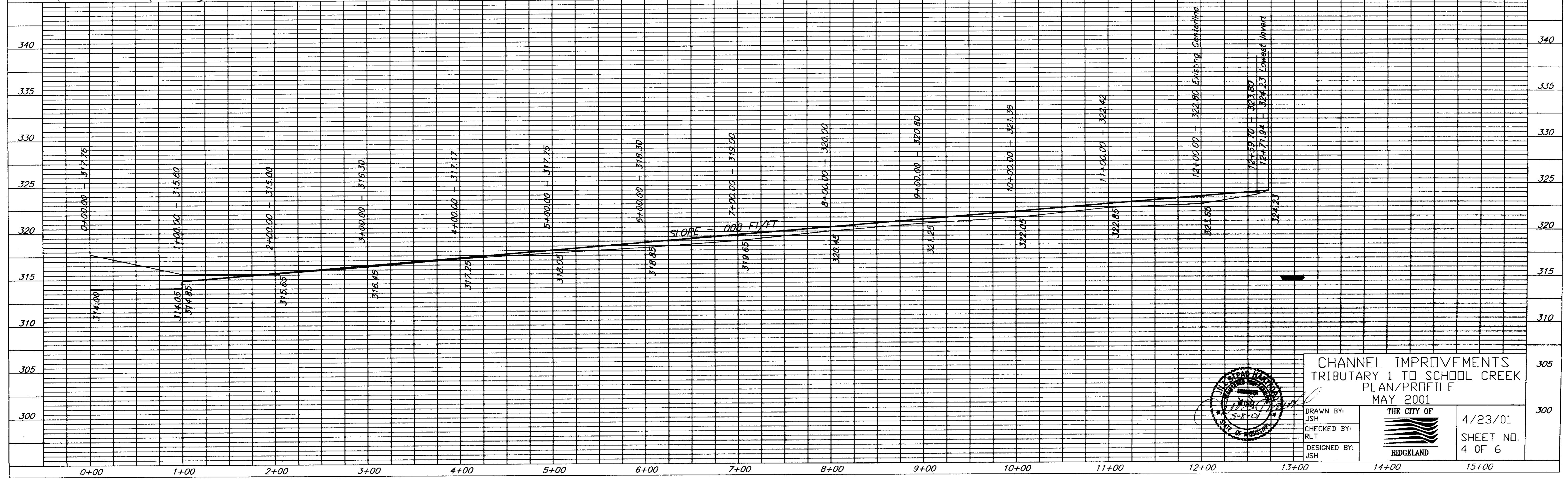
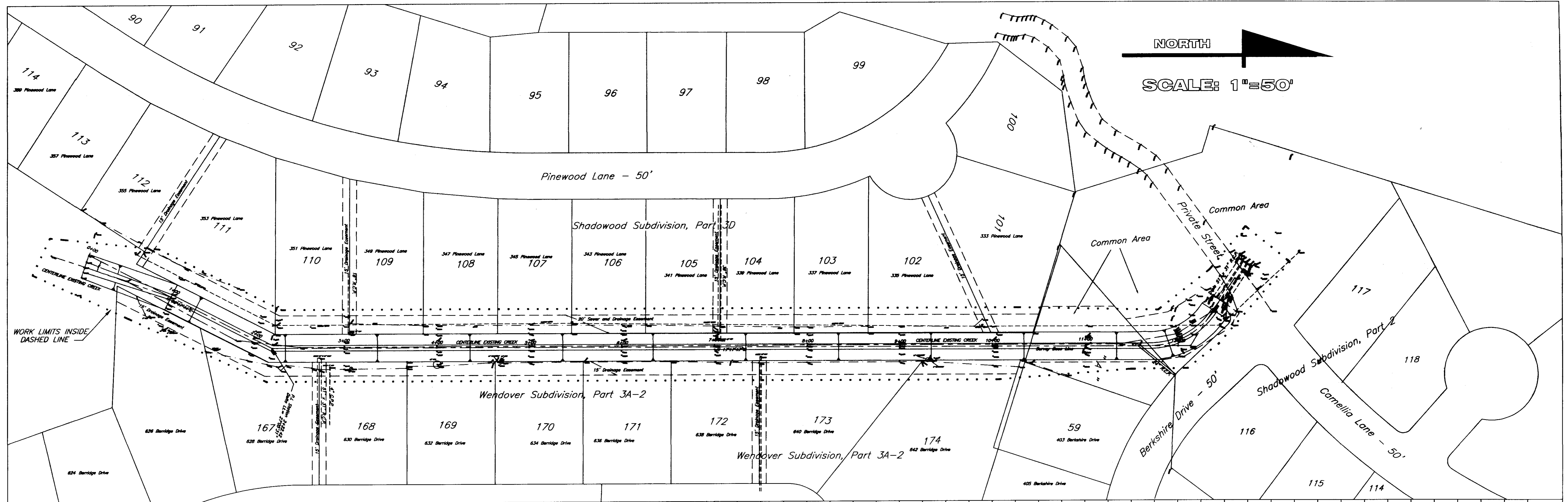
CHANNEL IMPROVEMENTS  
TRIBUTARY 1 TO SCHOOL CREEK  
MAY 2001  
STA. 6+25 TO STA. 12+72

DRAWN BY:  
JSH  
CHECKED BY:  
RLT  
DESIGNED BY:  
JSH



4/24/01  
SHEET NO.  
3 OF 6



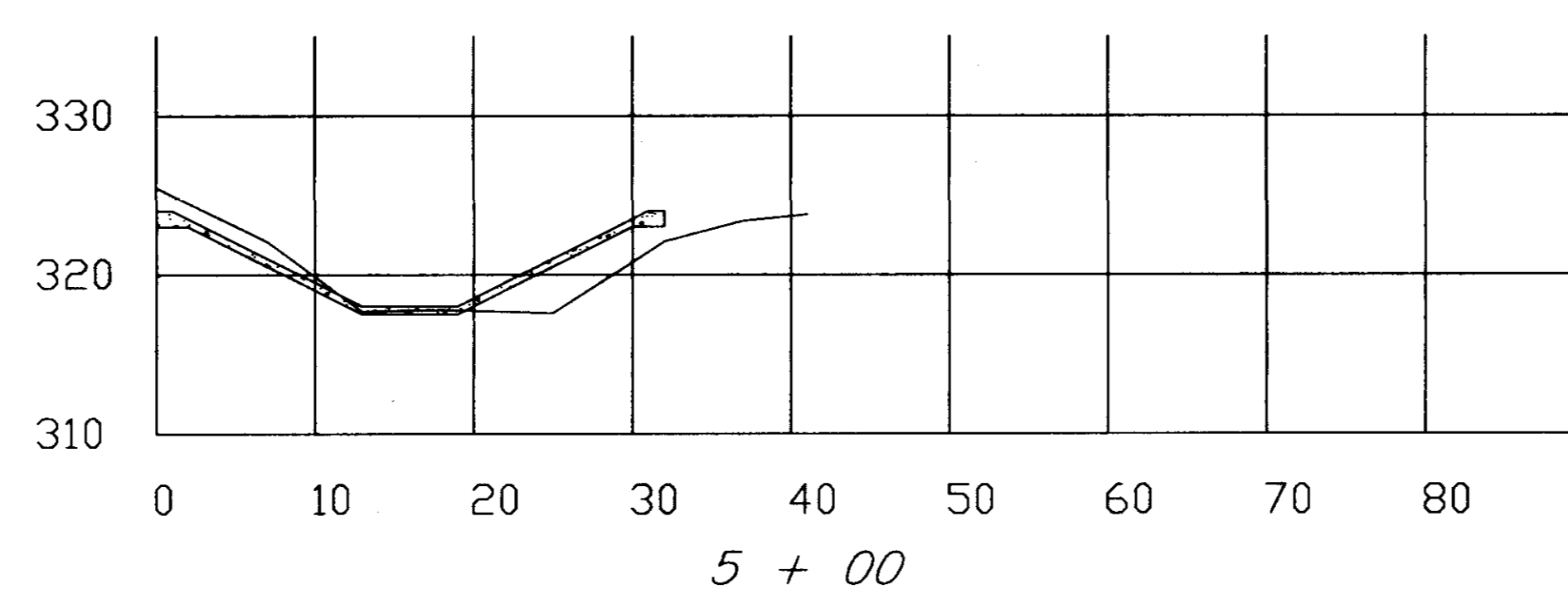
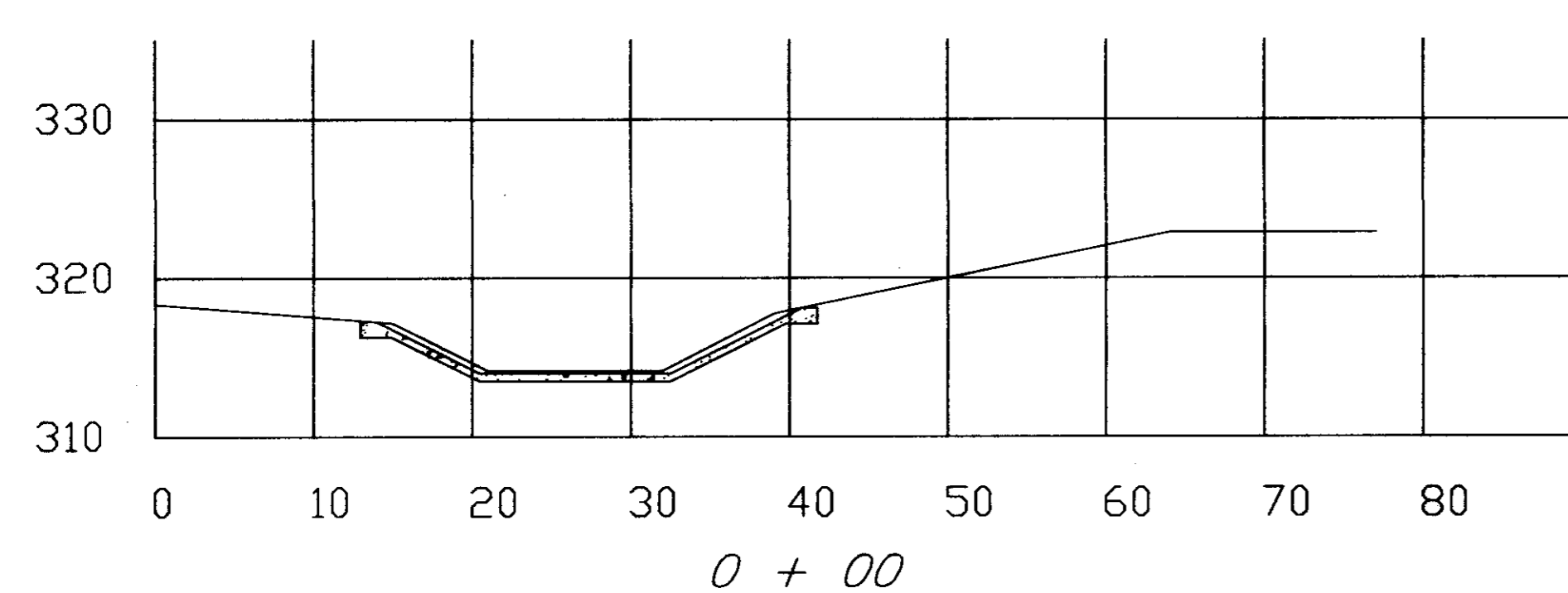
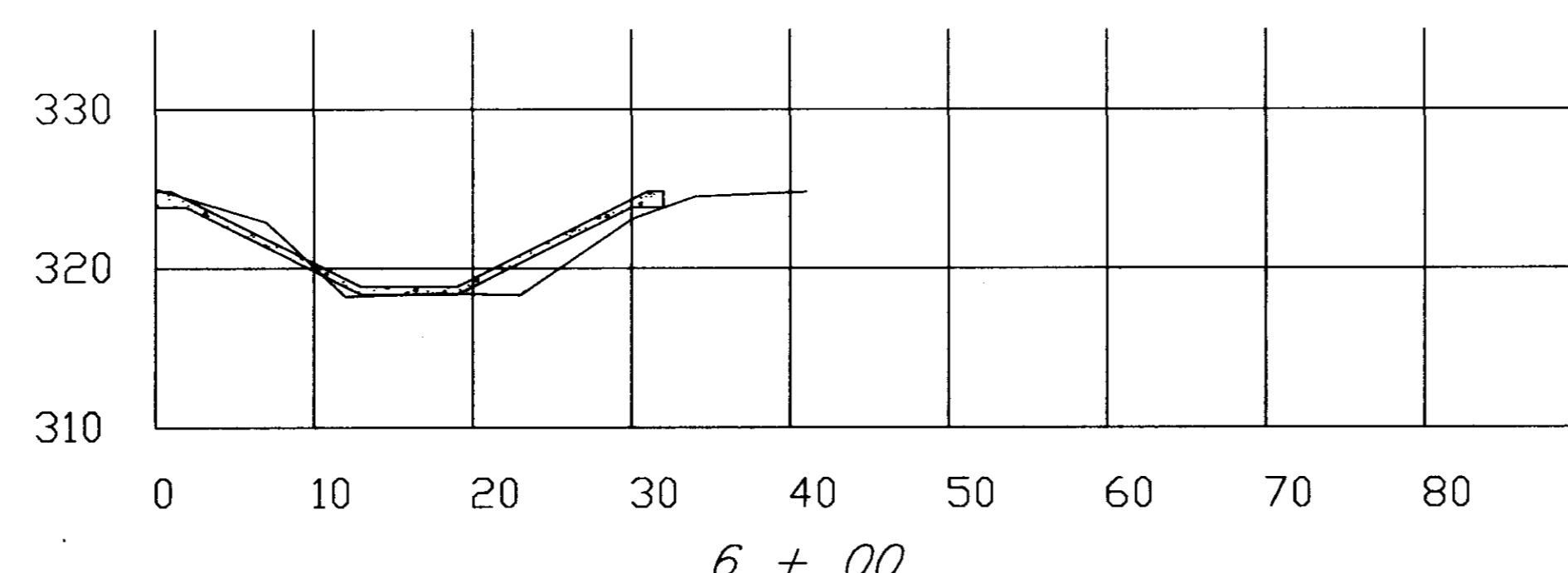
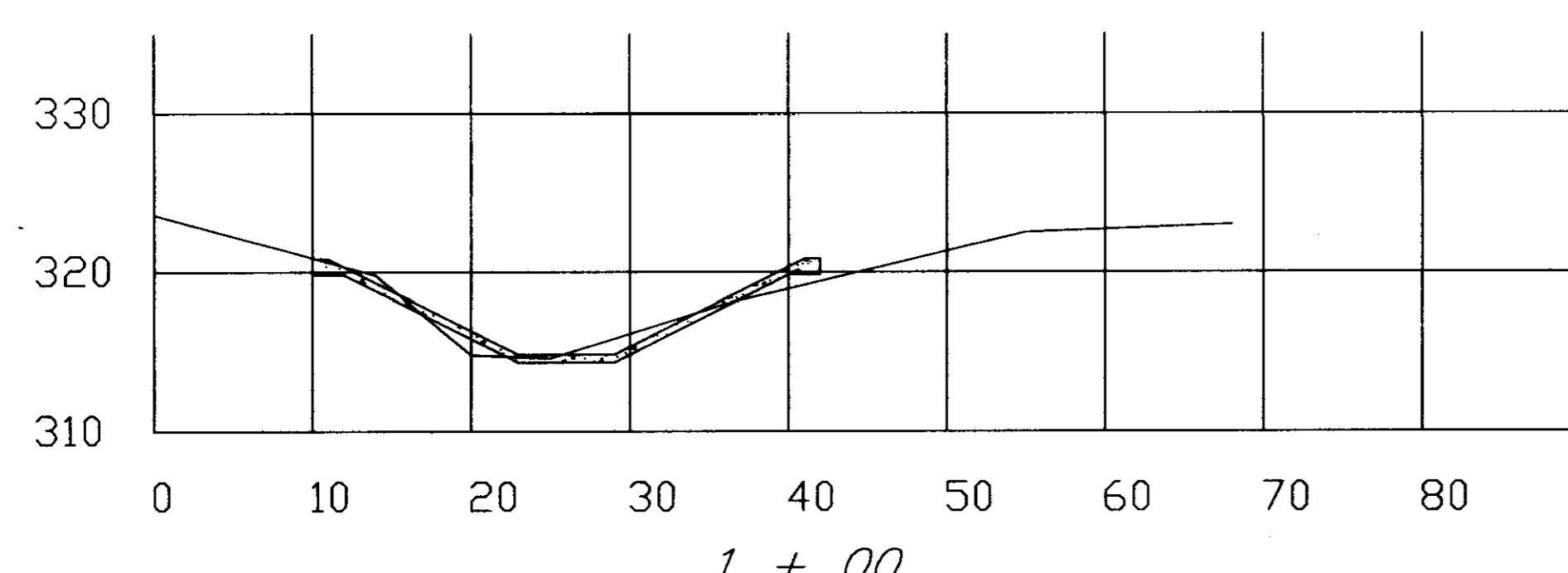
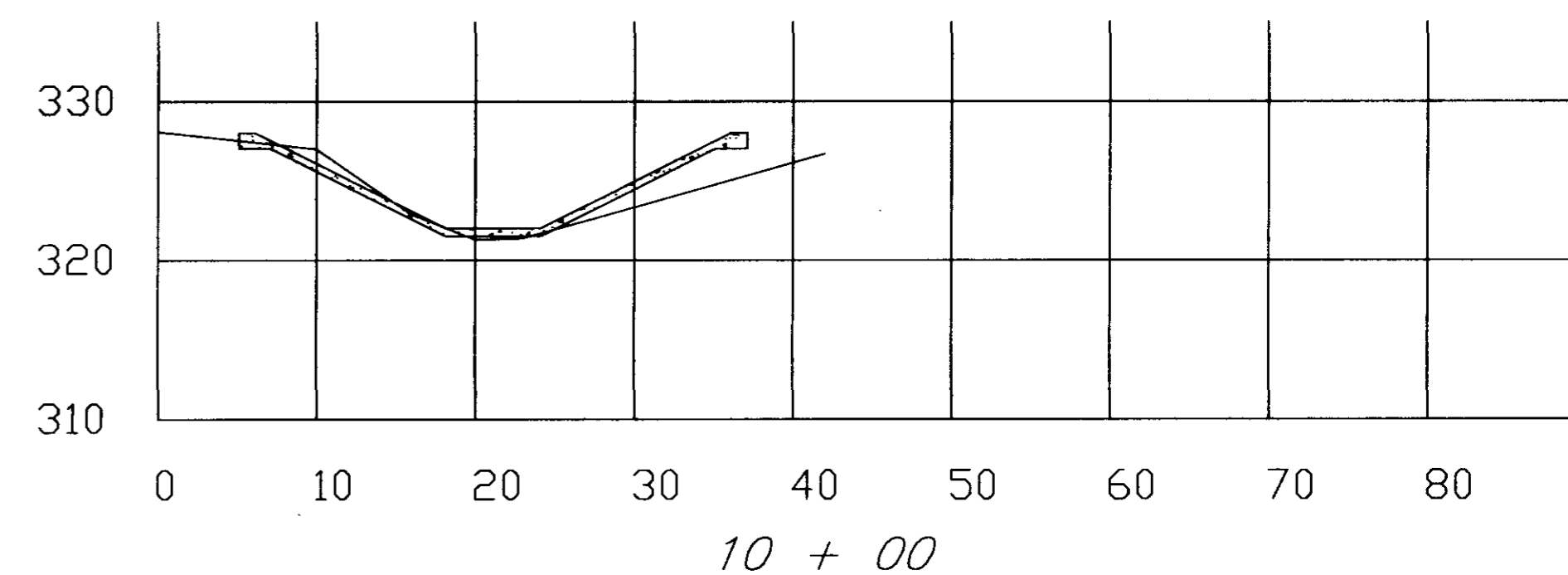
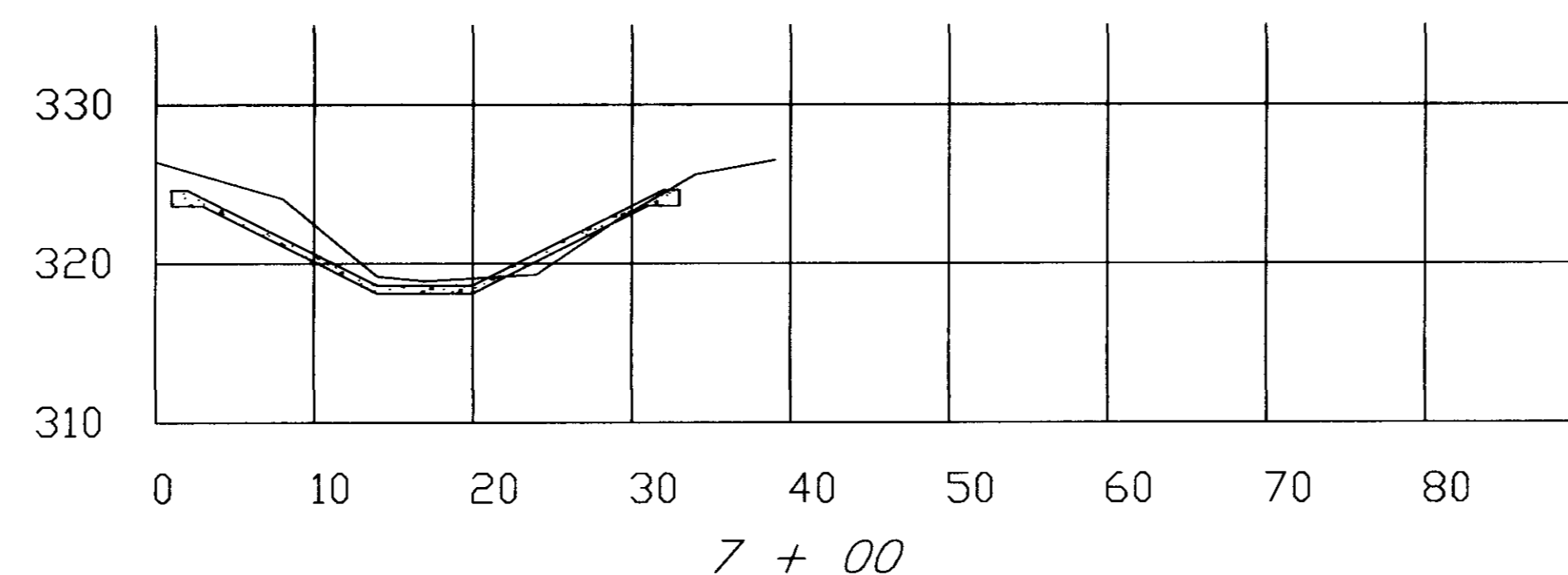
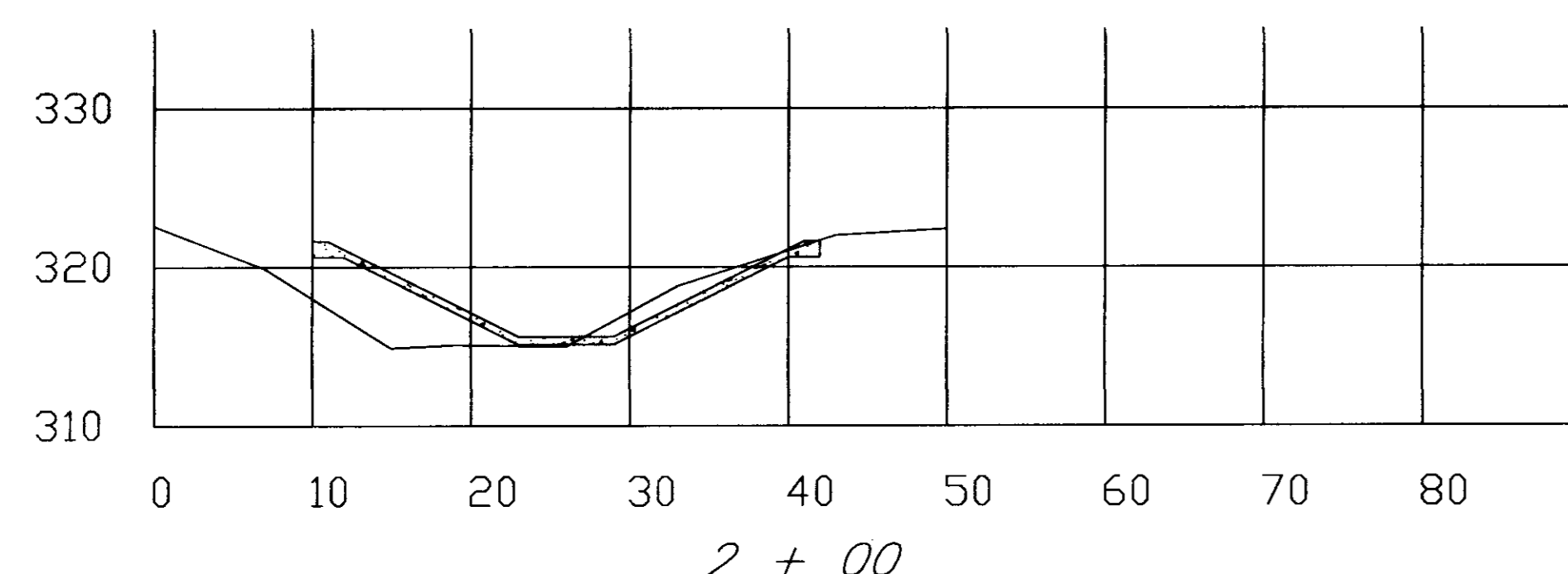
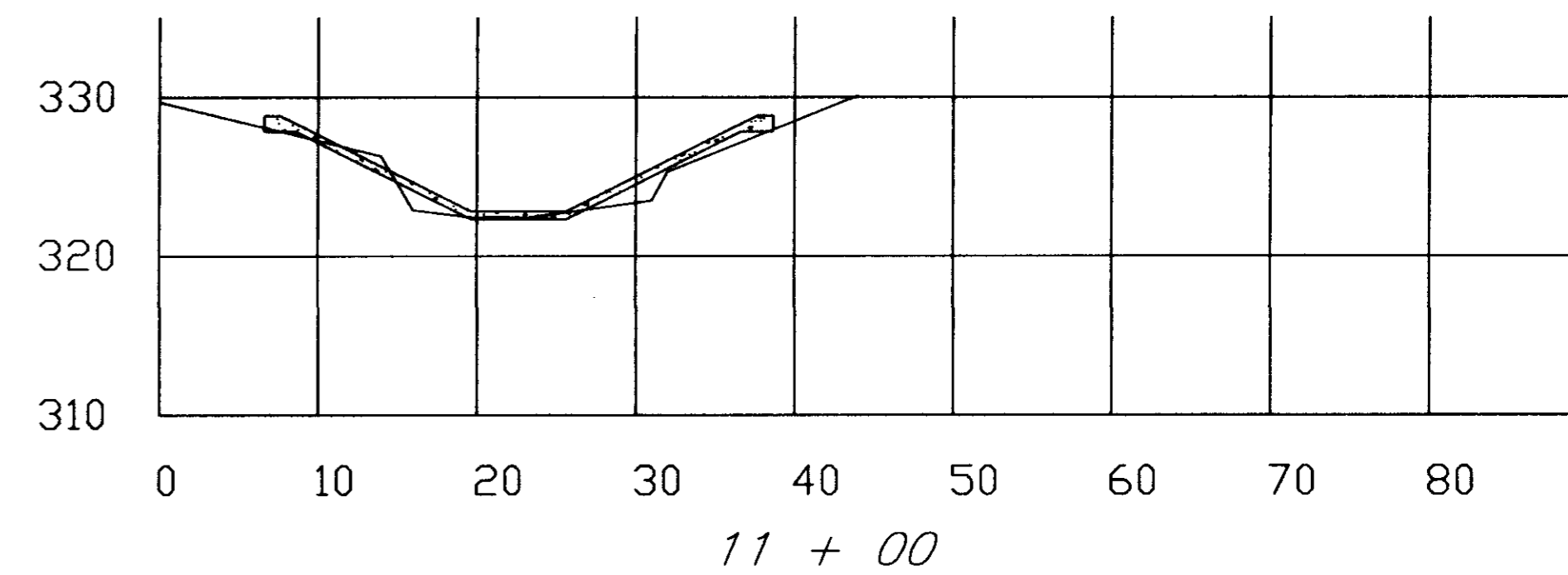
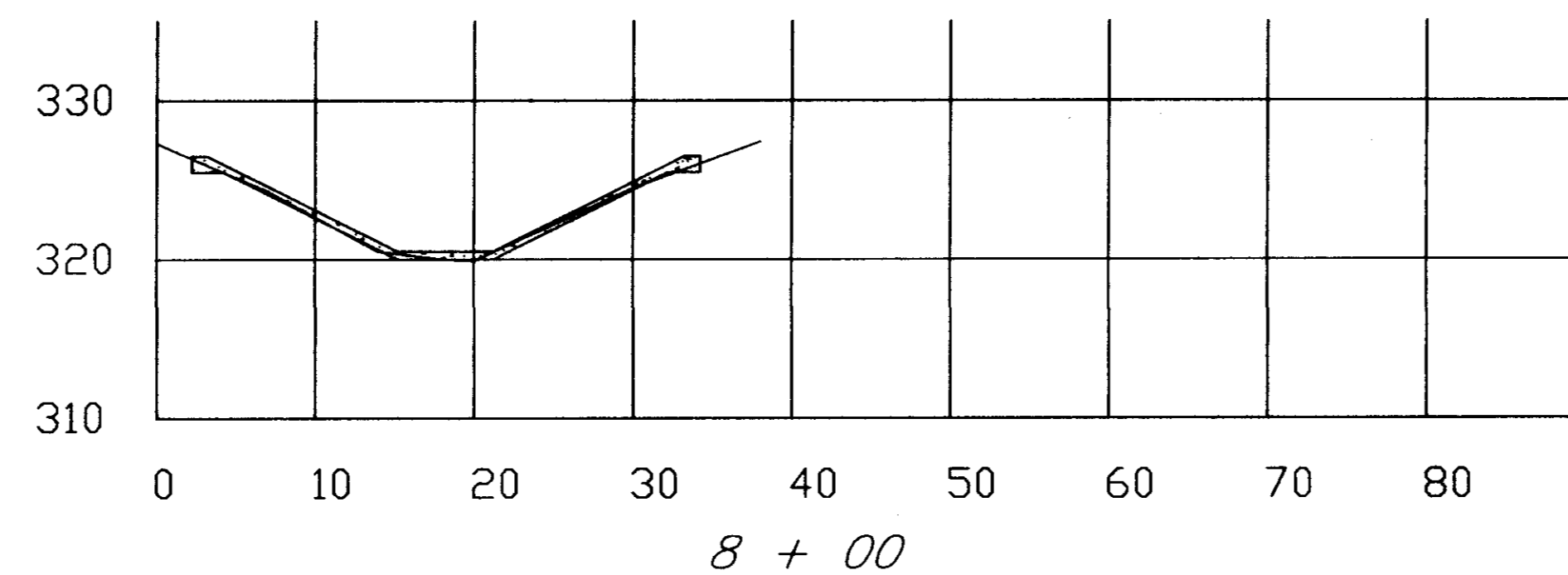
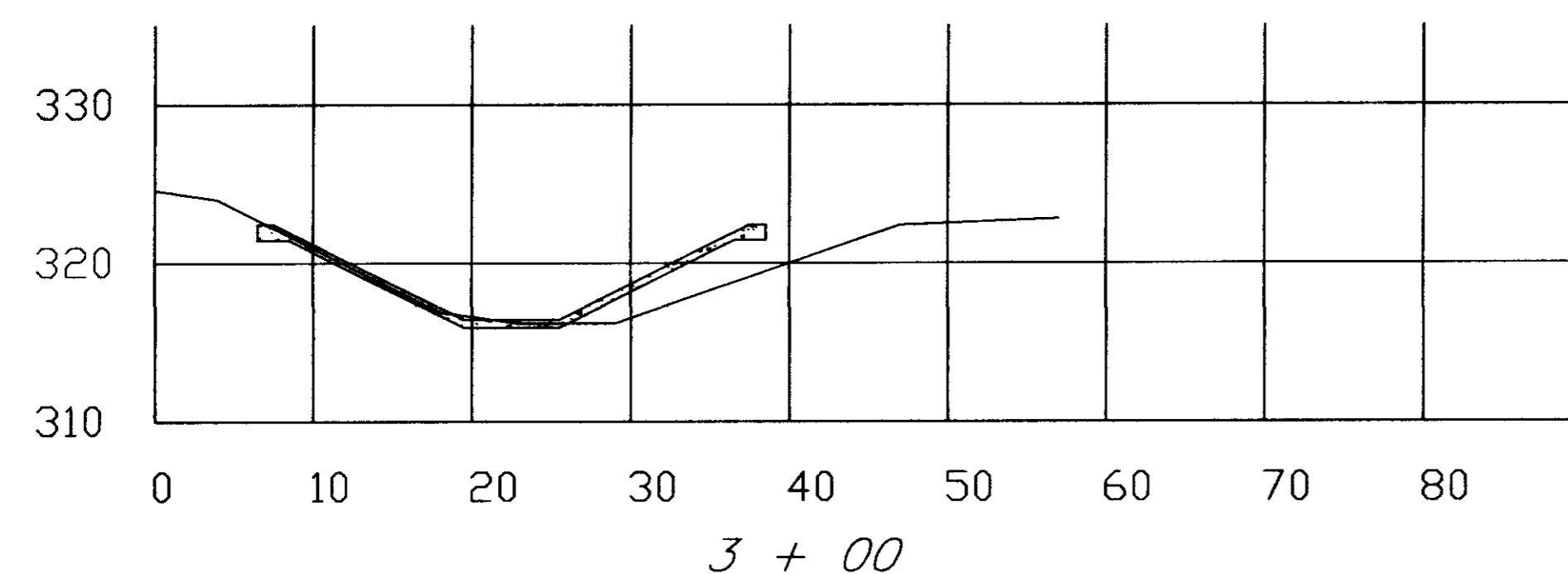
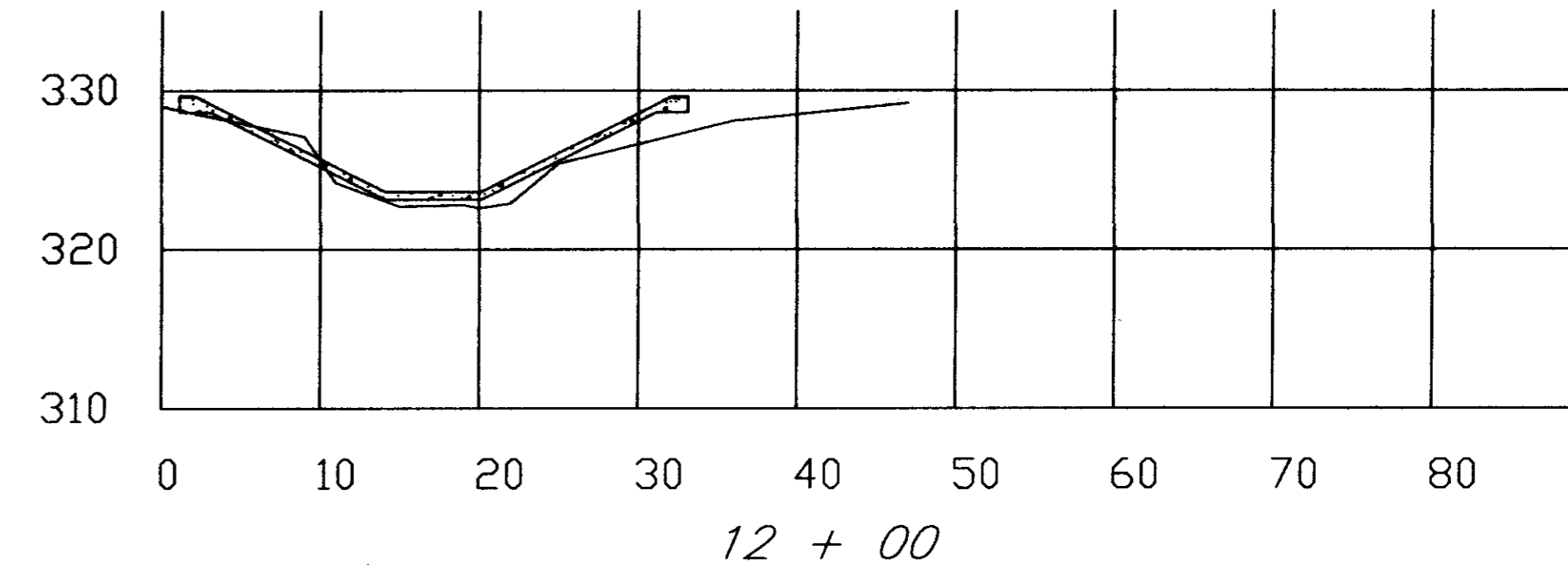
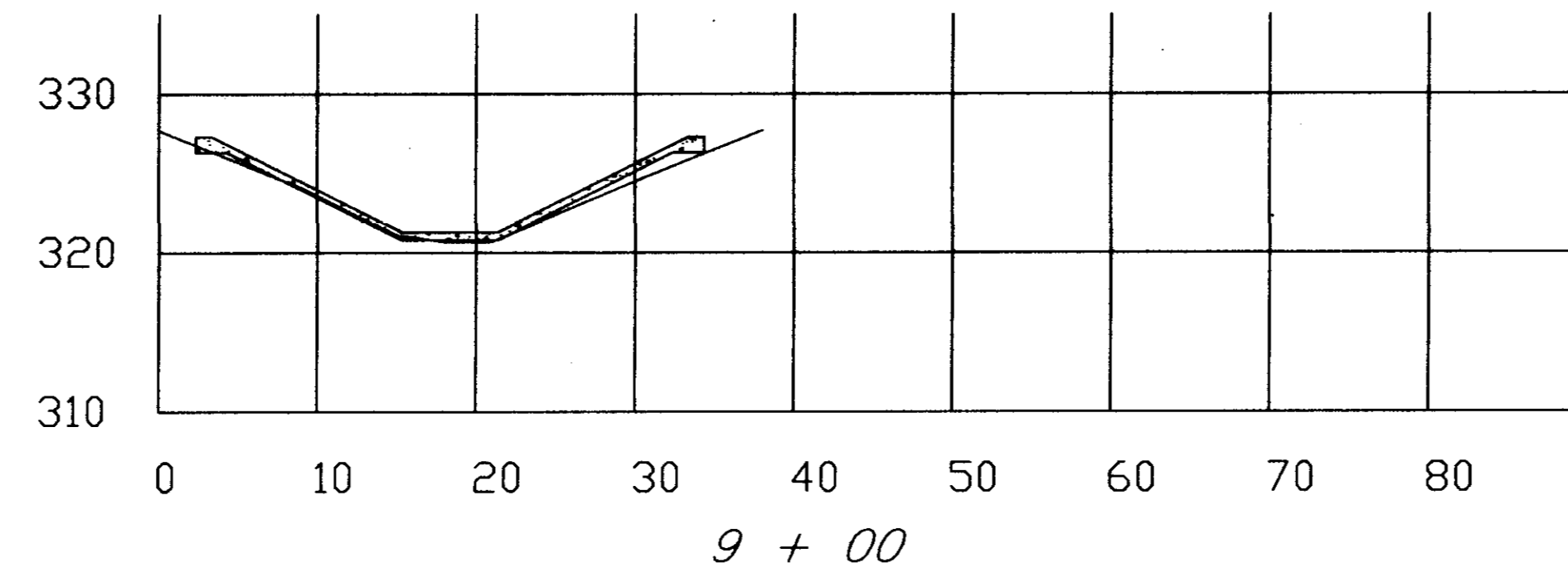
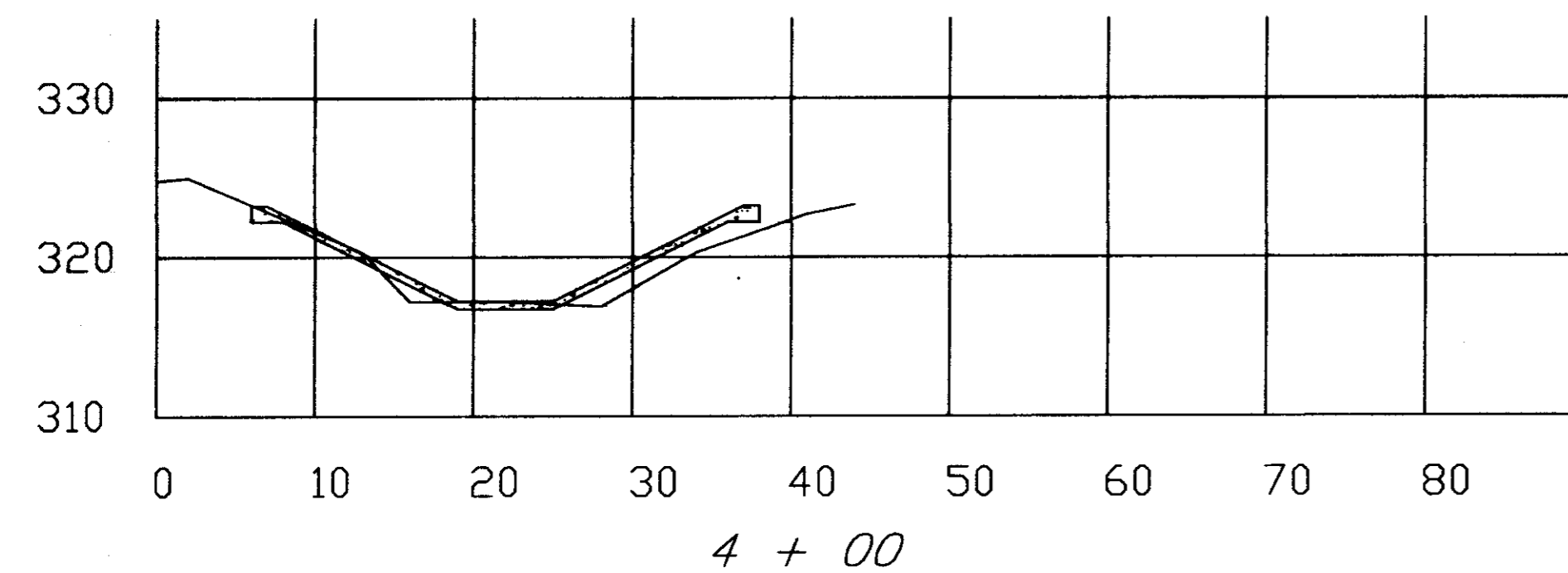


**CHANNEL IMPROVEMENTS  
TRIBUTARY 1 TO SCHOOL CREEK  
PLAN/PROFILE  
MAY 2001**

**THE CITY OF  
RIDGELAND**

DRAWN BY: JSH  
CHECKED BY: RL T  
DESIGNED BY: JSH

4/23/01  
SHEET NO.  
4 OF 6



CHANNEL IMPROVEMENTS  
 TRIBUTARY 1 TO SCHOOL CREEK  
 MAY 2001

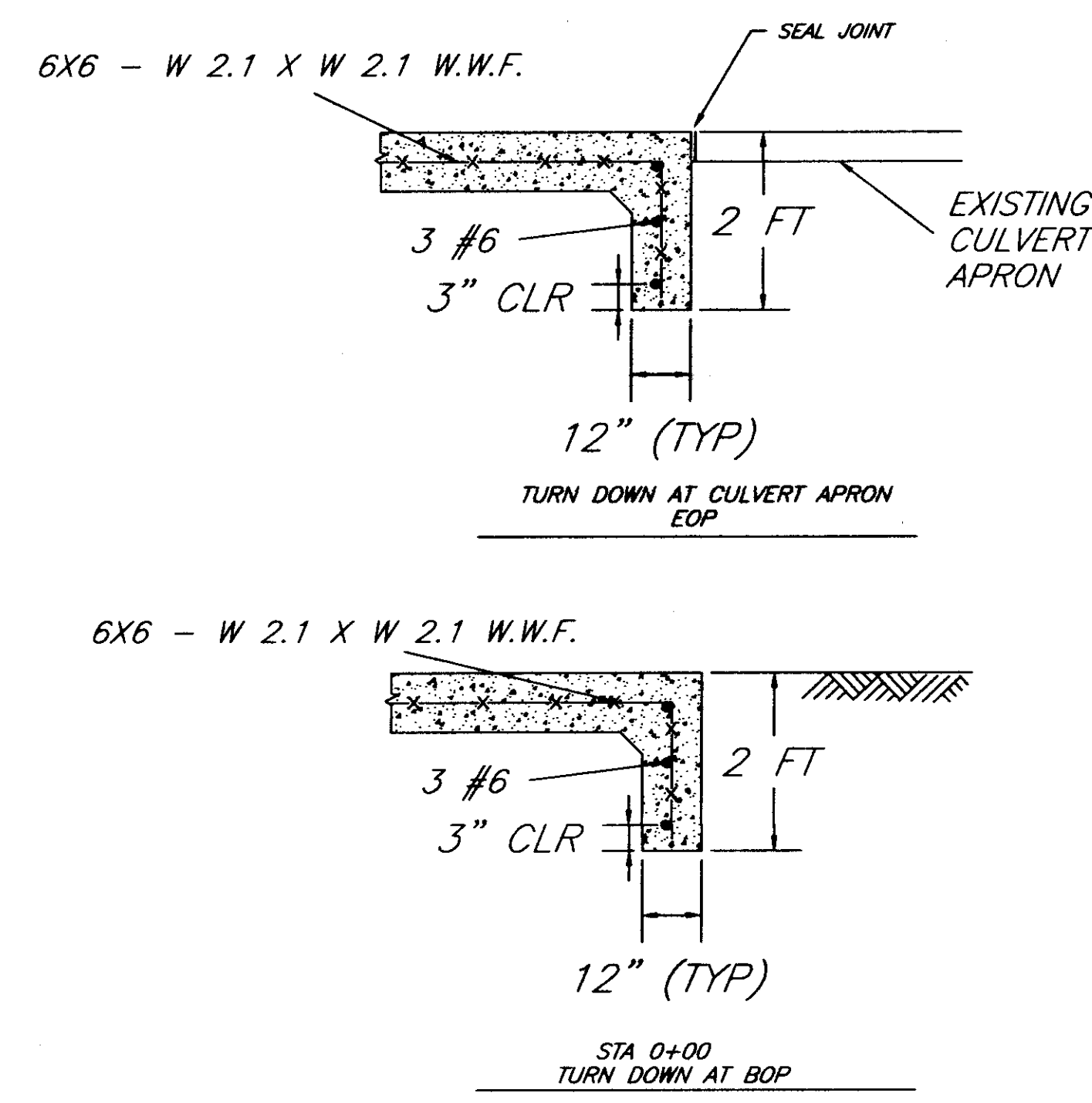
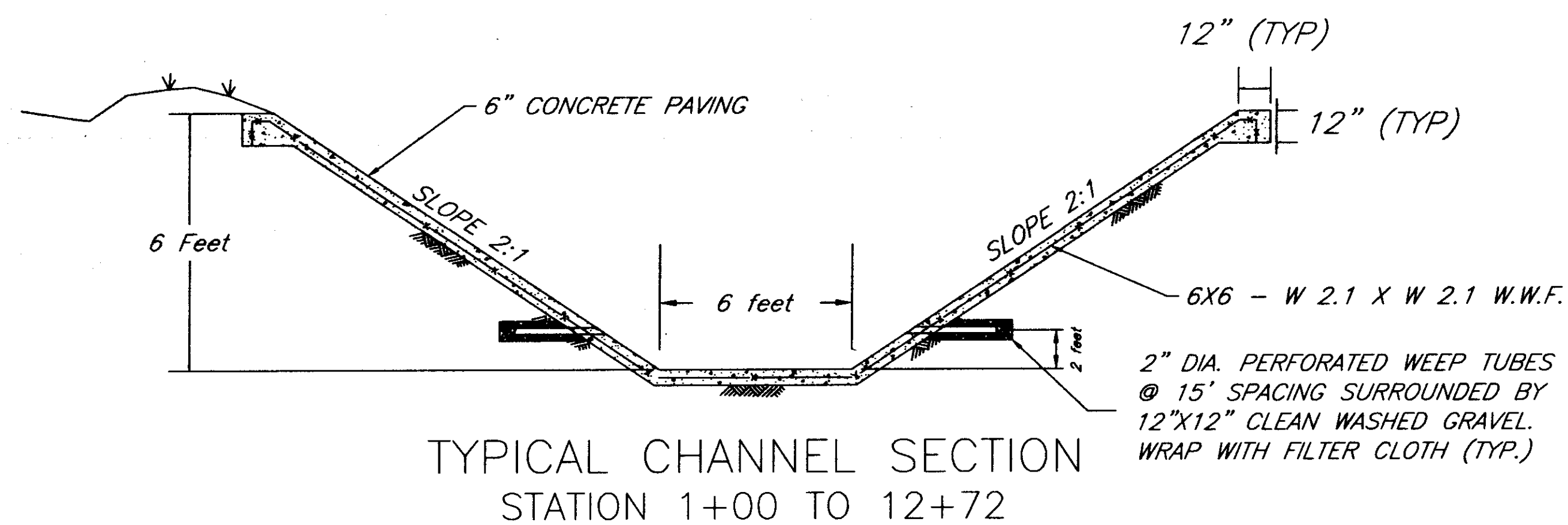
CROSS SECTIONS

DRAWN BY:  
 JSH  
 CHECKED BY:  
 RL  
 DESIGNED BY:  
 JSH

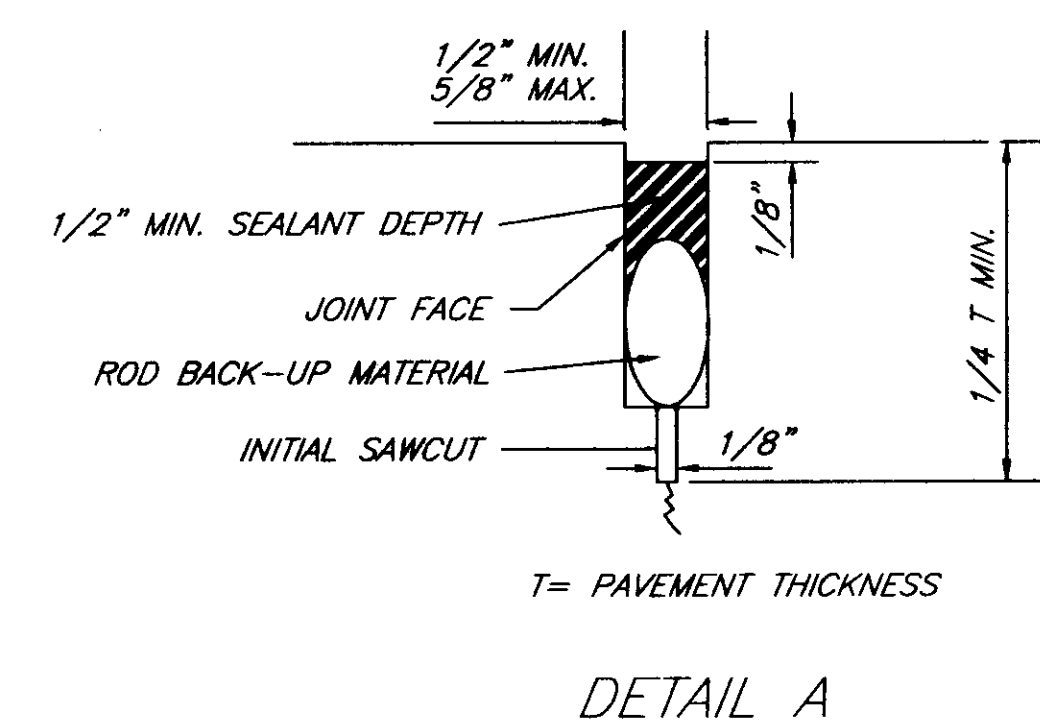
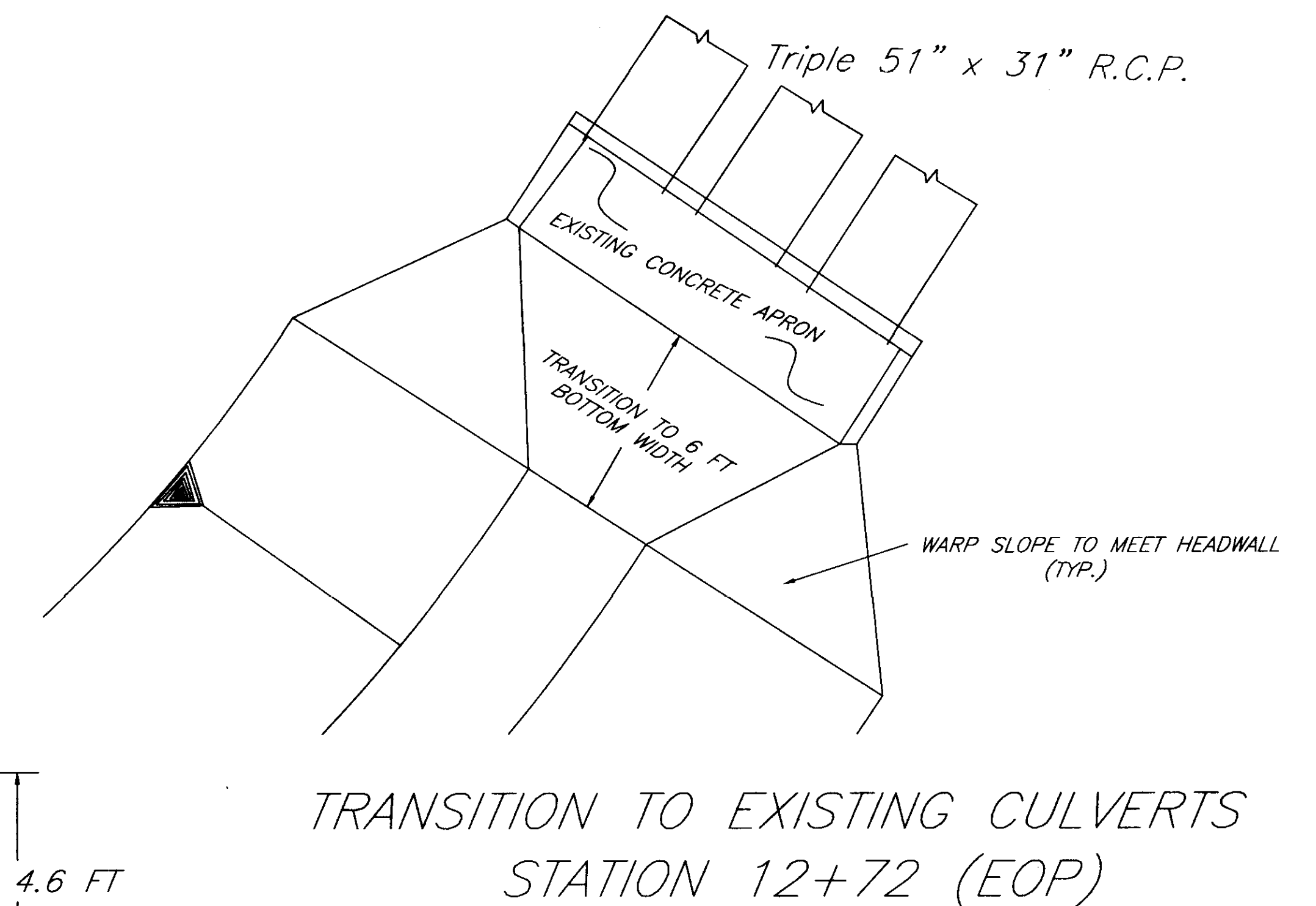
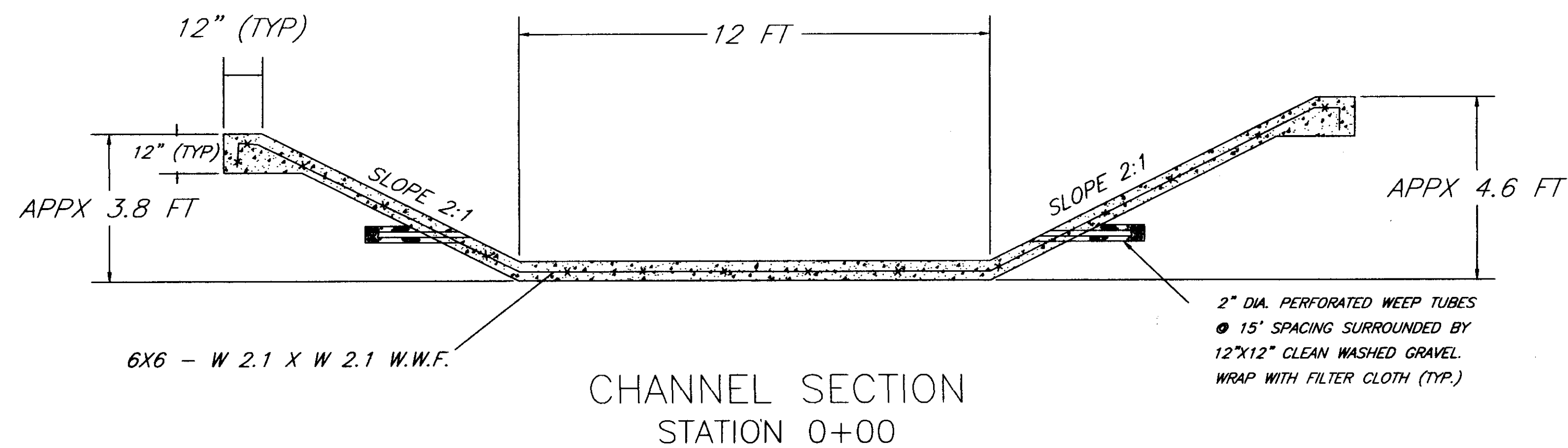
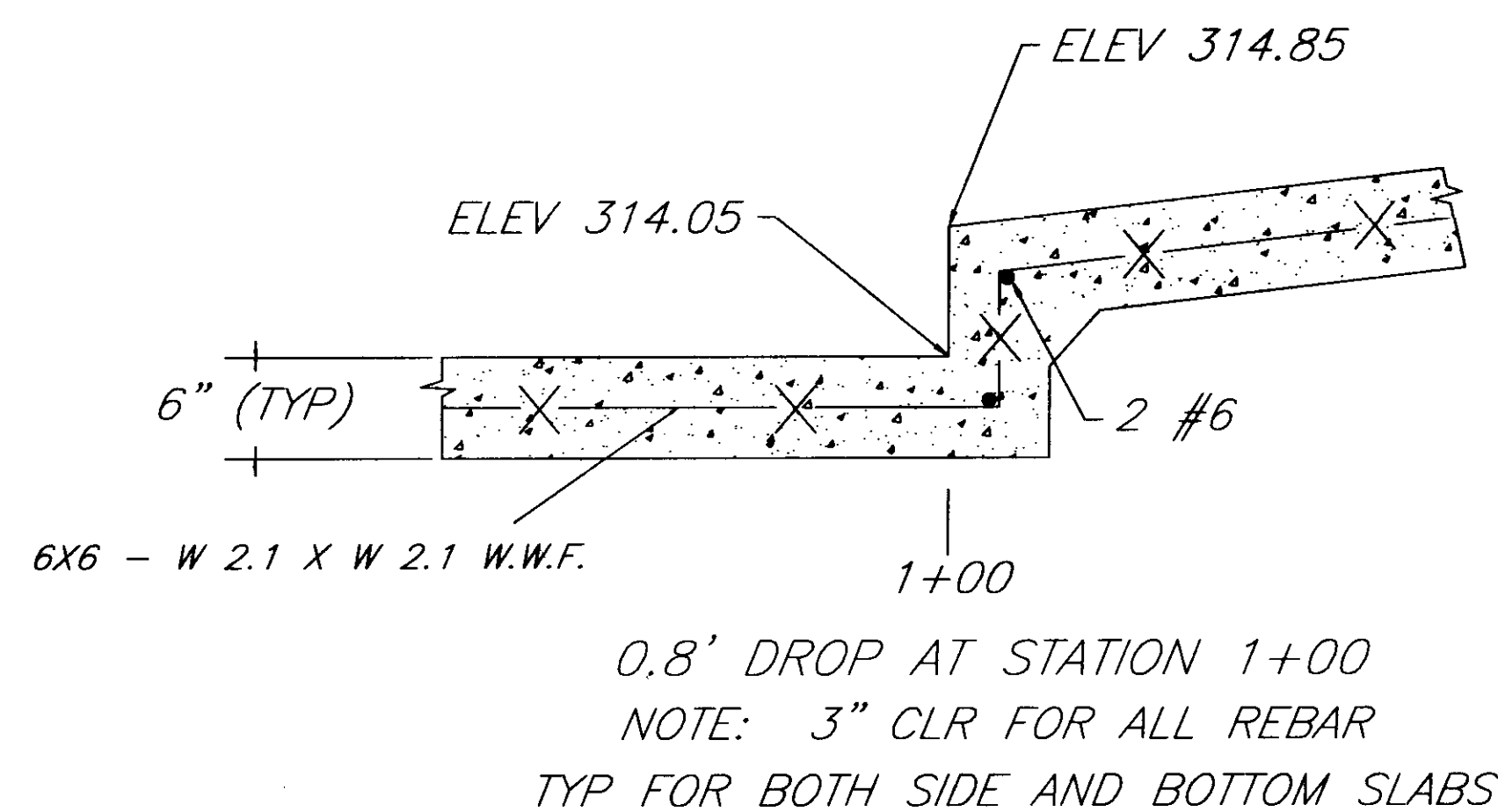
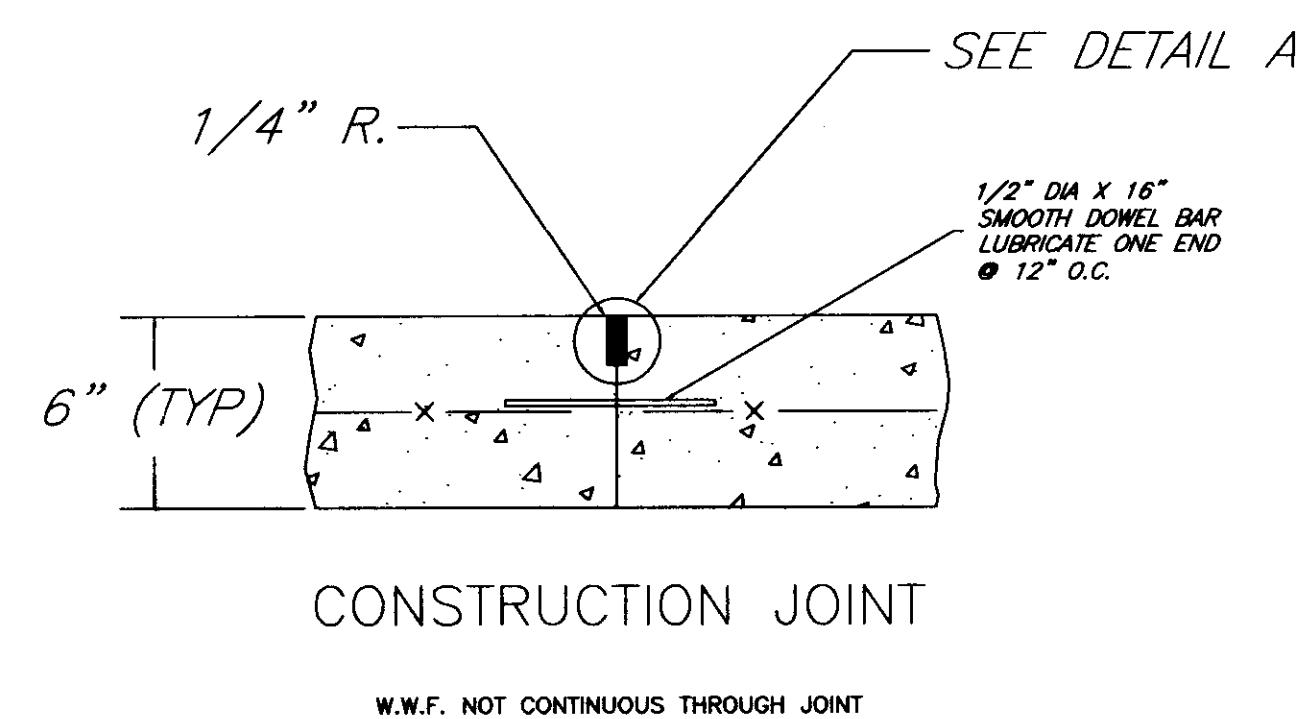
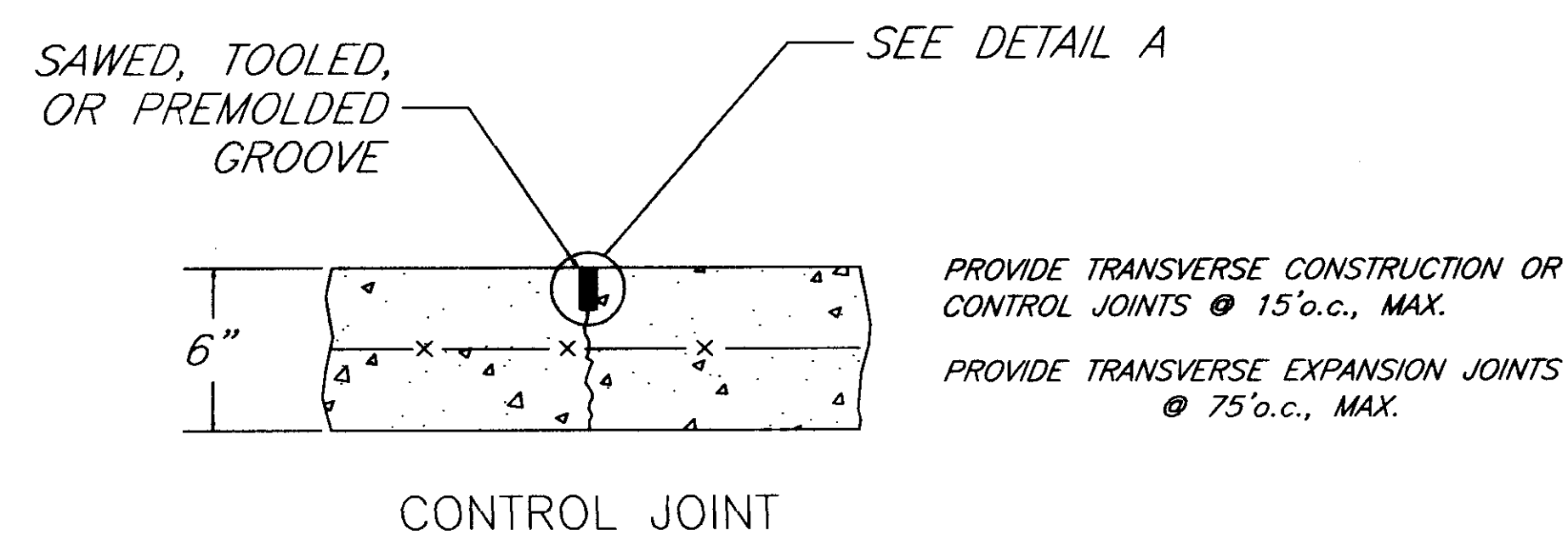


4/24/01  
 SHEET NO.  
 5 OF 6





1. The existing utility locations shown on the Drawings are approximate only. The Contractor shall coordinate the location (horizontal and vertical) of existing utilities (power, telephone, gas, water, sewer, etc.) with the appropriate utility company before construction begins.
2. Utility lines or service lines encountered during construction, whether shown on the Drawings or not, shall be protected by the Contractor and repairs necessary due to damage to same by the Contractor shall be at no additional cost to the owner.
3. The Contractor shall be responsible for verifying horizontal and vertical clearance requirements for utility services before installation.
4. Existing sanitary sewer manhole tops, water valves, valve boxes, meters, storm sewer or other related appurtenances shall, when required, be adjusted to finished grade by Contractor as an absorbed cost of the work. Castings, required to be removed, shall be salvaged to the Owner by the Contractor.
5. All trees within the work limits to be removed. Engineer will identify any trees to remain.
6. Wooden fences shall be removed and replaced. Fences will be salvaged where practicable. Temporary fences shall be provided where necessary. No separate payment will be made for temporary fencing; it will be an absorbed item under the bid item "Removal and replacement of fencing".
7. Construction access is via the city-owned stormwater detention basin property to the south of the project. NO access will be made through the subdivision.
8. Work Limits (Construction Limits) are shown on Sheet 4, and are within existing drainage easements.



CHANNEL SECTION TO TRANSITION FROM STA 0+00 TO THE TYPICAL SECTION AT STA 1+00

MISCELLANEOUS DETAILS ARE NOT TO SCALE

CHANNEL IMPROVEMENTS  
TRIBUTARY 1 TO SCHOOL CREEK  
MAY 2001

MISCELLANEOUS DETAILS

DRAWN BY:  
JSH  
CHECKED BY:  
RLT  
DESIGNED BY:  
JSH



4/23/01  
SHEET NO.  
6 OF 6