

CITY OF RIDGELAND

MADISON COUNTY, MISSISSIPPI

SIXTEEN INCH WATER LINE

MAYOR

GENE F. McGEE

MAYOR PRO TEM

HARVEY CARR, JR.

CITY ATTORNEY

JERRY MILLS

BOARD OF ALDERMEN

BRIAN BARCELLONA
 AL BIBLE
 HARVEY CARR, JR.
 LINDA DAVIS
 DARYL SMITH

PUBLIC WORKS DIRECTOR

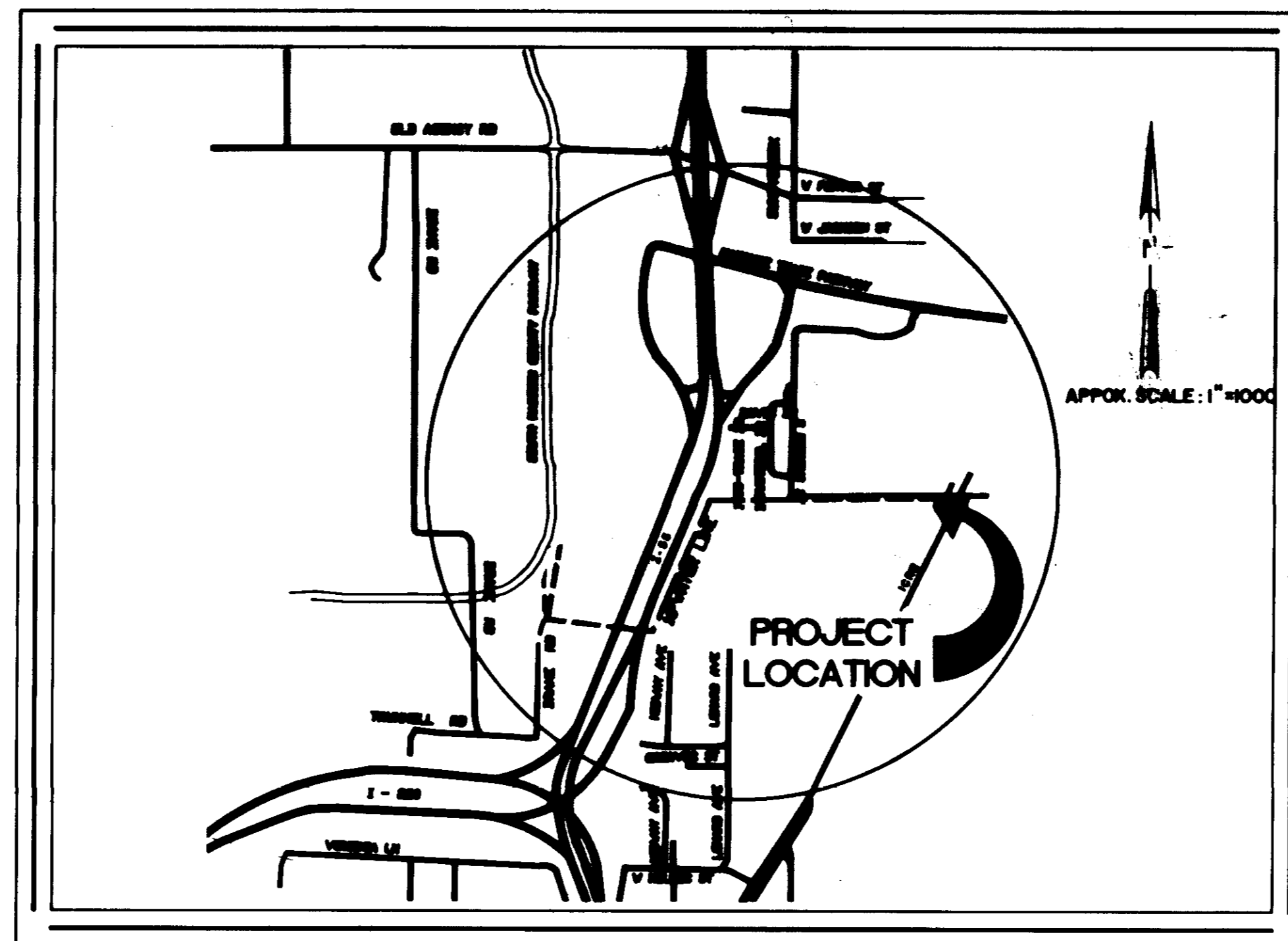
SAM VINSON

ASSISSTANT PUBLIC WORKS DIRECTOR

SID HAWTHORNE

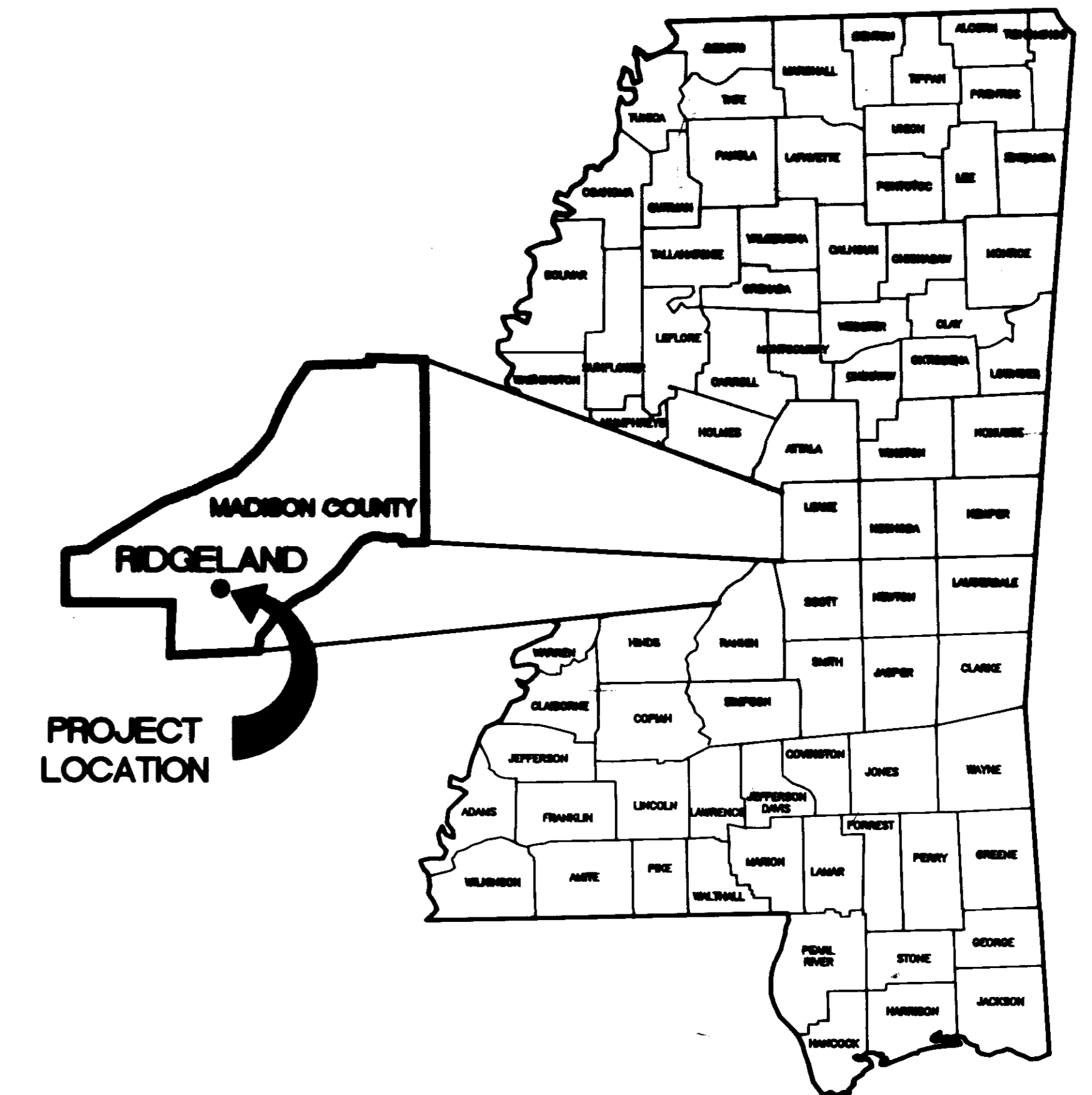
CITY CLERK

MICHAEL McPHEARSON



VICINITY MAP

APRIL 1992



LOCATION MAP

RECORD DRAWING
 DATE 4/16/92 BY JSM

PREPARED BY :

NEEL-SCHAFFER, INC.
 ENGINEERS * PLANNERS
 Jackson, Mississippi

John Q. Sigman

DATE: 4/16/92

JOHN Q. SIGMAN, P.E.
 MISSISSIPPI LICENSE NO. 6764

THE CITY OF






 RIDGELAND

PWP-05001

INDEX TO DRAWINGS

1. COVER SHEET
2. INDEX TO DRAWINGS, GENERAL NOTES AND LEGEND
3. SITE PLAN
4. PLAN AND PROFILE
5. PLAN AND PROFILE
6. PLAN AND PROFILE
7. PLAN AND PROFILE
8. MISCELLANEOUS DETAILS
9. TRAFFIC CONTROL PLAN

LEGEND

— FM —	SEWAGE FORCE MAIN (EXISTING)
— ○ —	FENCE (EXISTING)
— 8" — W —	WATER SUPPLY LINE (EXISTING)
— — P —	O.H. POWER LINE (EXISTING)
— — —	EASEMENT (AS NOTED ON PLAN)
— EOP —	EDGE OF PAVEMENT
— ROW —	RIGHT OF WAY
+	CORPORATION STOP
✓	GALVANIZED ANCHOR BOLT
	WELDED WIRE FABRIC CONC. REINF.
⊥	REINFORCING BAR w/SIZE
Ⓢ Ⓣ	NOTATION MARKS
— — —	PROPOSED 16" WATER LINE
	COUPLING
	FIRE HYDRANT
WV	WATER VALVE
	UTILITY POLE
+	SIGN
	GROUTED RIP RAP
Ⓢ	SEWER MANHOLE
— T —	TELEPHONE CABLE

GENERAL NOTES

- 1 ALL DIMENSIONS SHOWN ON THE PLANS (SCALED OR COMPUTED), OR STAKED IN THE FIELD, SHALL BE VERIFIED BY THE CONTRACTOR PRIOR TO CONSTRUCTION. IN THE EVENT THE CONTRACTOR DISCOVERS ANY APPARENT ERROR OR DISCREPANCY, HE SHALL NOTIFY THE ENGINEER IMMEDIATELY IN WRITING, REQUESTING HIS INTERPRETATION AND THE ENGINEER WILL MAKE SUCH CORRECTIONS AND DECISIONS IN WRITING AS MAY BE DEEMED NECESSARY TO CARRY OUT THE INTENT OF THE PLANS.
- 2 THE CONTRACT DRAWINGS ARE SCHEMATIC AND MAY SHOW PLUMBING AND PIPING IN A GENERAL WAY ONLY, AND ALL PIPING AND DETAILS ARE NOT NECESSARILY SHOWN. IT IS THE CONTRACTOR'S RESPONSIBILITY TO FURNISH COMPLETE MATERIALS AND COMPLETE ALL WORK NECESSARY FOR A SATISFACTORY INSTALLATION.
- 3 PIPING ROUTES SHALL BE APPROVED BY THE ENGINEER PRIOR TO PLACEMENT.
- 4 WATER LINES INSTALLED UNDERGROUND SHALL HAVE A MINIMUM OF 3'-0" OF COVER UNLESS OTHERWISE SHOWN ON THE DRAWINGS.
- 5 CORPORATION STOPS SHALL BE 1/2-INCH (MINIMUM) F1102 OR F1101 FOR PVC OR APPROVED EQUAL.
- 6 PVC PIPE SHALL BE C900 UNLESS OTHERWISE NOTED ON THE DRAWINGS.
- 7 TAPPING SADDLES SHALL BE DRESSER STYLE 291 OR APPROVED EQUAL.
- 8 CONTRACTOR TO TAP 12" LINE AT OFF DEMAND HOURS, AND COORDINATE WITH THE CITY OF RIDGELAND. TIME AND DATE OF THIS WORK SHALL BE APPROVED IN ADVANCE BY THE OWNER.
- 9 EXISTING WATER MAINS, SANITARY SEWERS, TELEPHONE CABLES, POWER LINES, AND OTHER UTILITIES MAY VARY FROM THAT SHOWN ON CONSTRUCTION PLANS. CONTRACTOR SHALL ASSUME ALL RESPONSIBILITY FOR LOCATING AND PROTECTING ALL UTILITIES, INCLUDING ANY NOT SHOWN ON CONSTRUCTION PLANS.
- 10 BORING WILL BE REQUIRED UNDER INTERSTATE HIGHWAY 56 AS SHOWN ON CONSTRUCTION PLANS.

ABBREVIATIONS

DWG.	DRAWING
EX. OR EXIST.	EXISTING
T.B.R.	TO BE REMOVED
U.G.	UNDERGROUND
I.A.W.	IN ACCORDANCE WITH
W.W.F.	WELDED WIRE FABRIC
CORP.	CORPORATION
D.I.P.	DUCTILE IRON PIPE
M.J.	MECHANICAL JOINT PIPE
REQ'D.	REQUIRED
DET.	DETAIL
O.D.	OUTSIDE DIAMETER
E.W.O.C.	EACH WAY ON CENTER
PSF	POUNDS PER SQUARE FOOT
PSI	POUNDS PER SQUARE INCH
ADJ.	ADJUSTMENT
R.	RADIUS
P.P.	POWER POLE
OPG.	OPENING
S/W	SIDEWALK
MOD.	MODIFICATION
N.T.S.	NOT TO SCALE
O.H.	OVERHEAD

RECORD DRAWING
DATE 6/18/72 BY PCN

5-6-82 ADD NOTE ON CONNECTION

CITY OF RIDGELAND
SIXTEEN INCH WATER LINE
N.B. ACCOUNT NO. 3-894-01

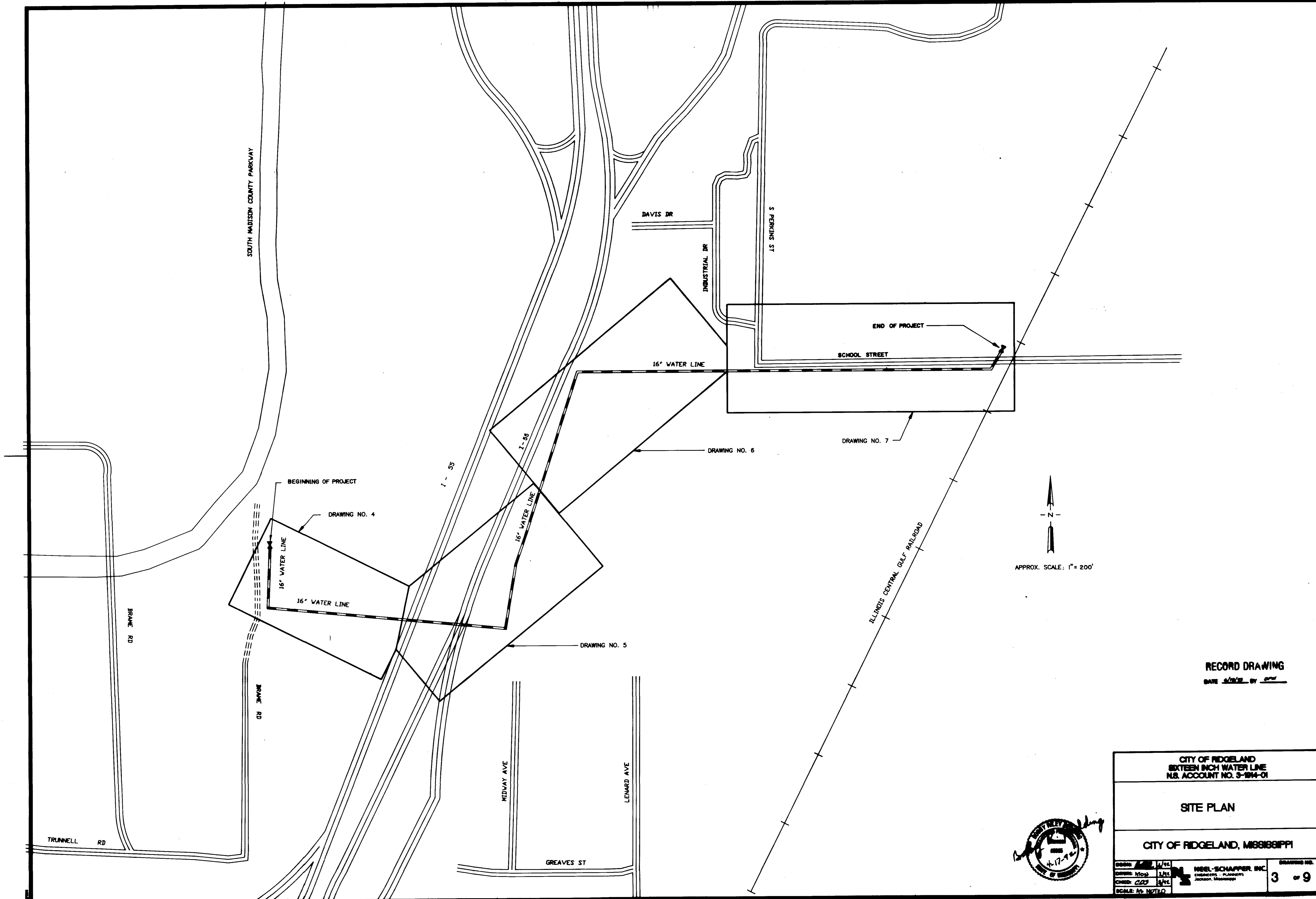
INDEX TO DRAWINGS,
GENERAL NOTES AND LEGEND

CITY OF RIDGELAND, MISSISSIPPI



DATE: 6/18/72	SCALE: NONE	DESIGNED: MOD	CHECKED: CPS	PROJECT: 3-894-01	DRAWING NO. 2.1 of 9
---------------	-------------	---------------	--------------	-------------------	----------------------

NEEL-SCHAPPER, INC.
ENGINEERS - PLANNERS
Jackson, Mississippi

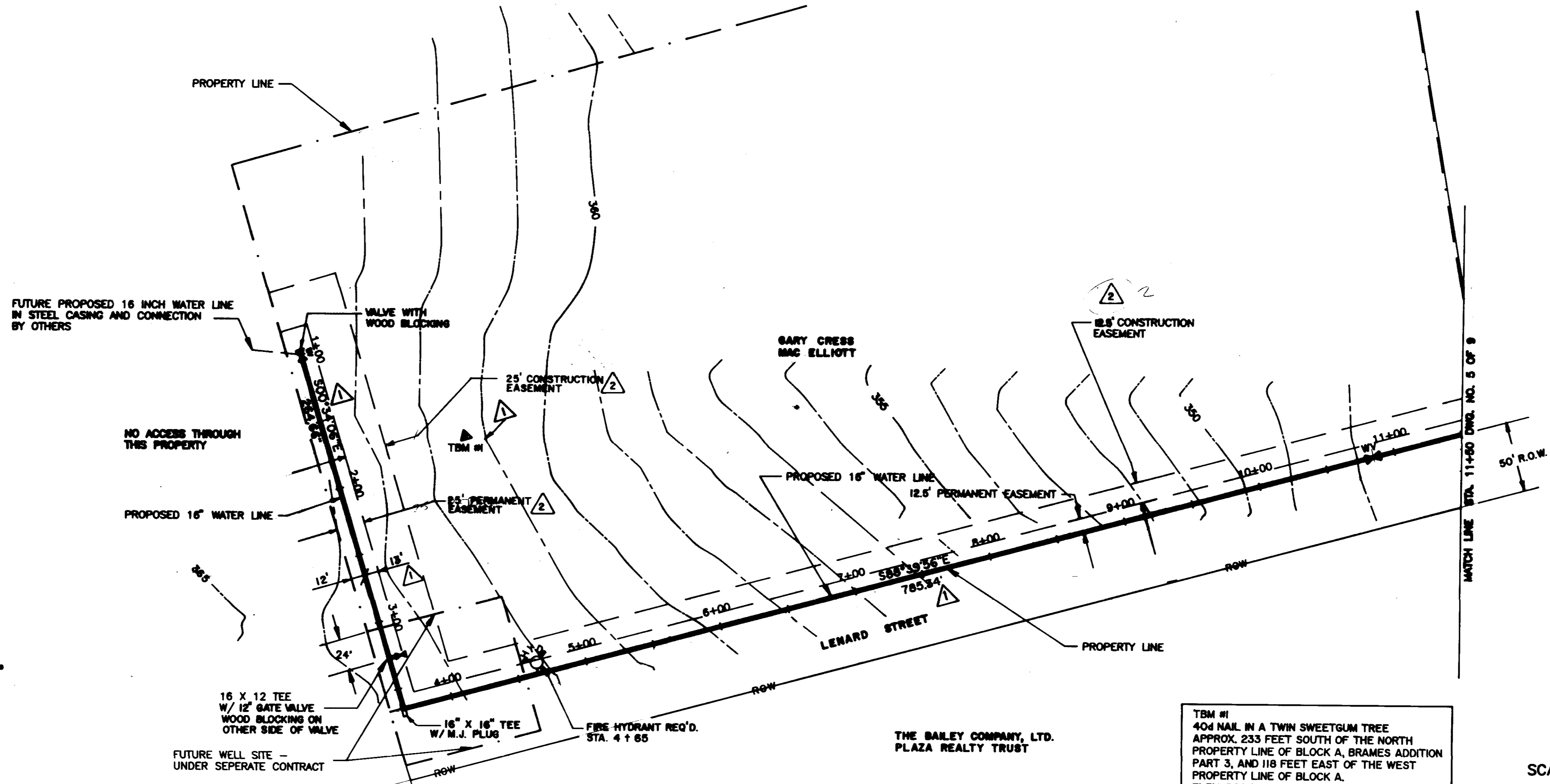
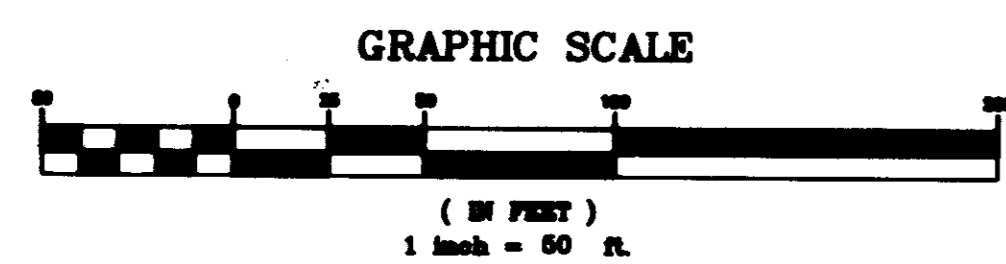


APPROX. SCALE: 1" = 200'

RECORD DRAWING
DATE 5/12/92 BY CPM

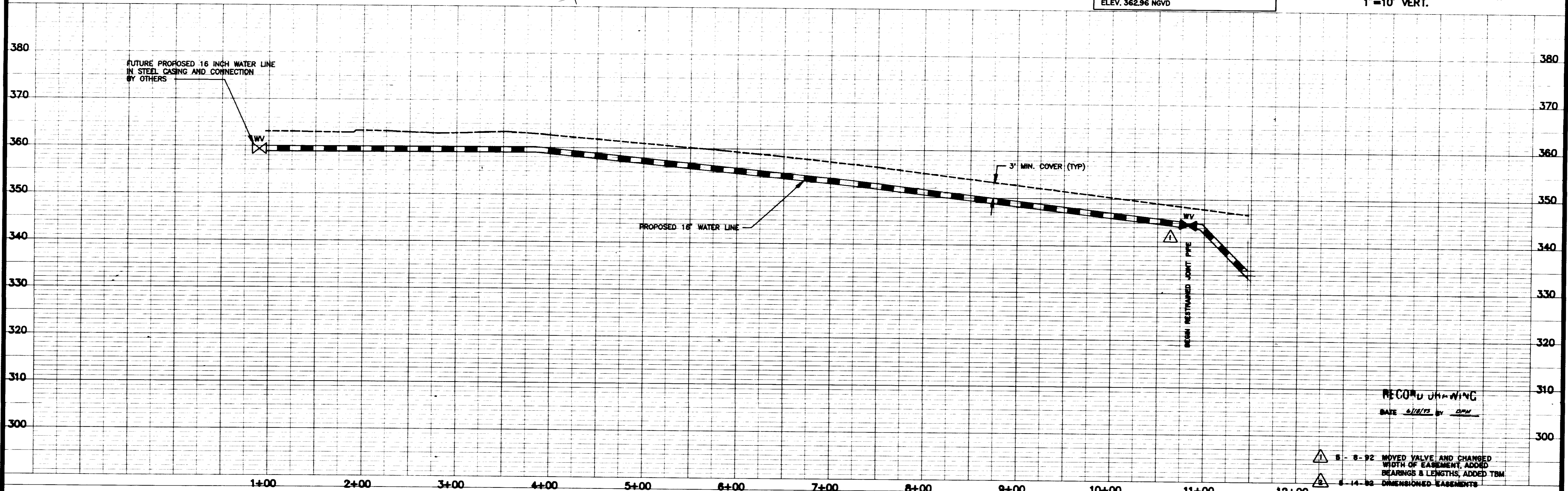
CITY OF RIDGELAND SIXTEEN INCH WATER LINE N.B. ACCOUNT NO. 3-1814-01	
SITE PLAN	
CITY OF RIDGELAND, MISSISSIPPI	
DESIGNED: <u>WJS</u> 1/92 DRAWN: <u>WJS</u> 1/92 CHECKED: <u>CPM</u> 5/92 SCALE: AS NOTED	NEEL-SCHAPPER, INC. ENGINEERS - PLANNERS JACKSON, MISSISSIPPI DRAWING NO. 3 OF 9





TBM #1
404 NAIL IN A TWIN SWEETGUM TREE
APPROX. 233 FEET SOUTH OF THE NORTH
PROPERTY LINE OF BLOCK A, BRAMES ADDITION
PART 3, AND 118 FEET EAST OF THE WEST
PROPERTY LINE OF BLOCK A.
ELEV. 362.96 NGVD

SCALE 1"=50' HORIZ.
1"=10' VERT.

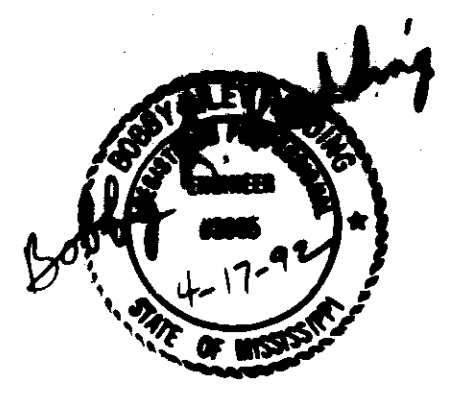
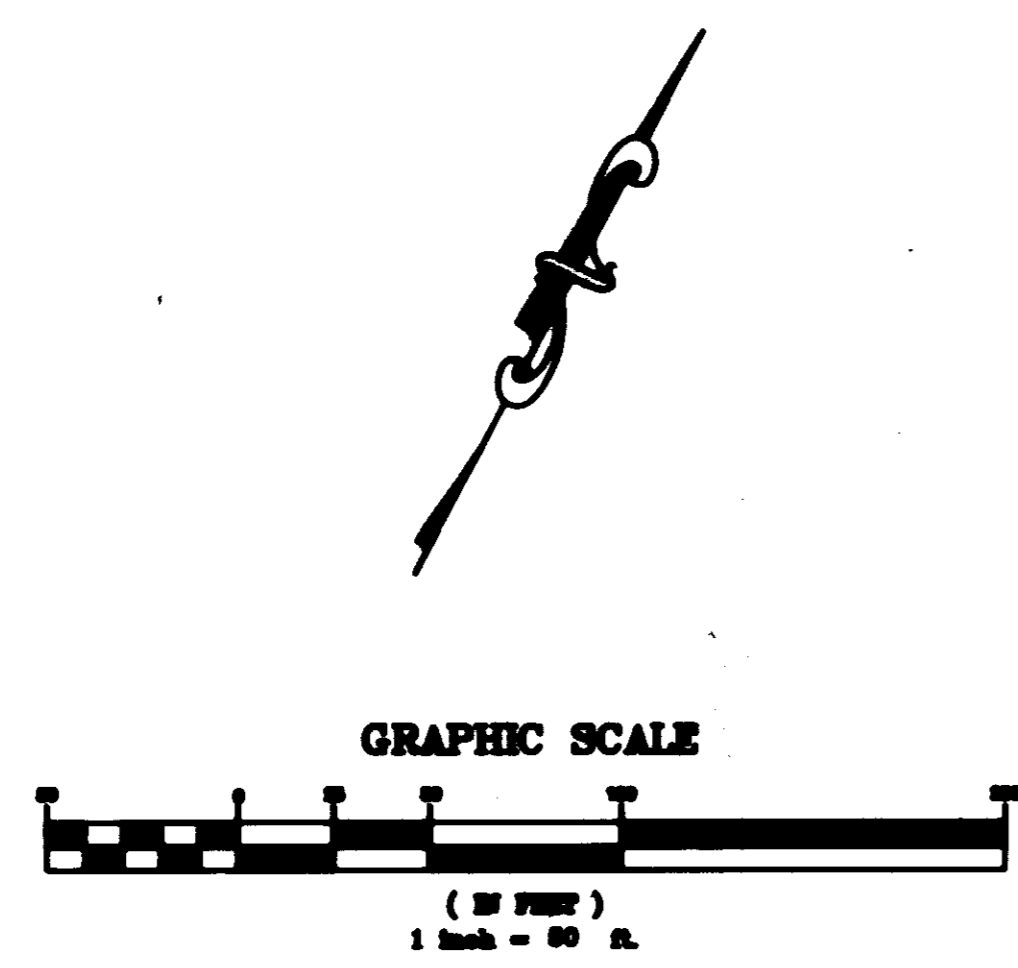
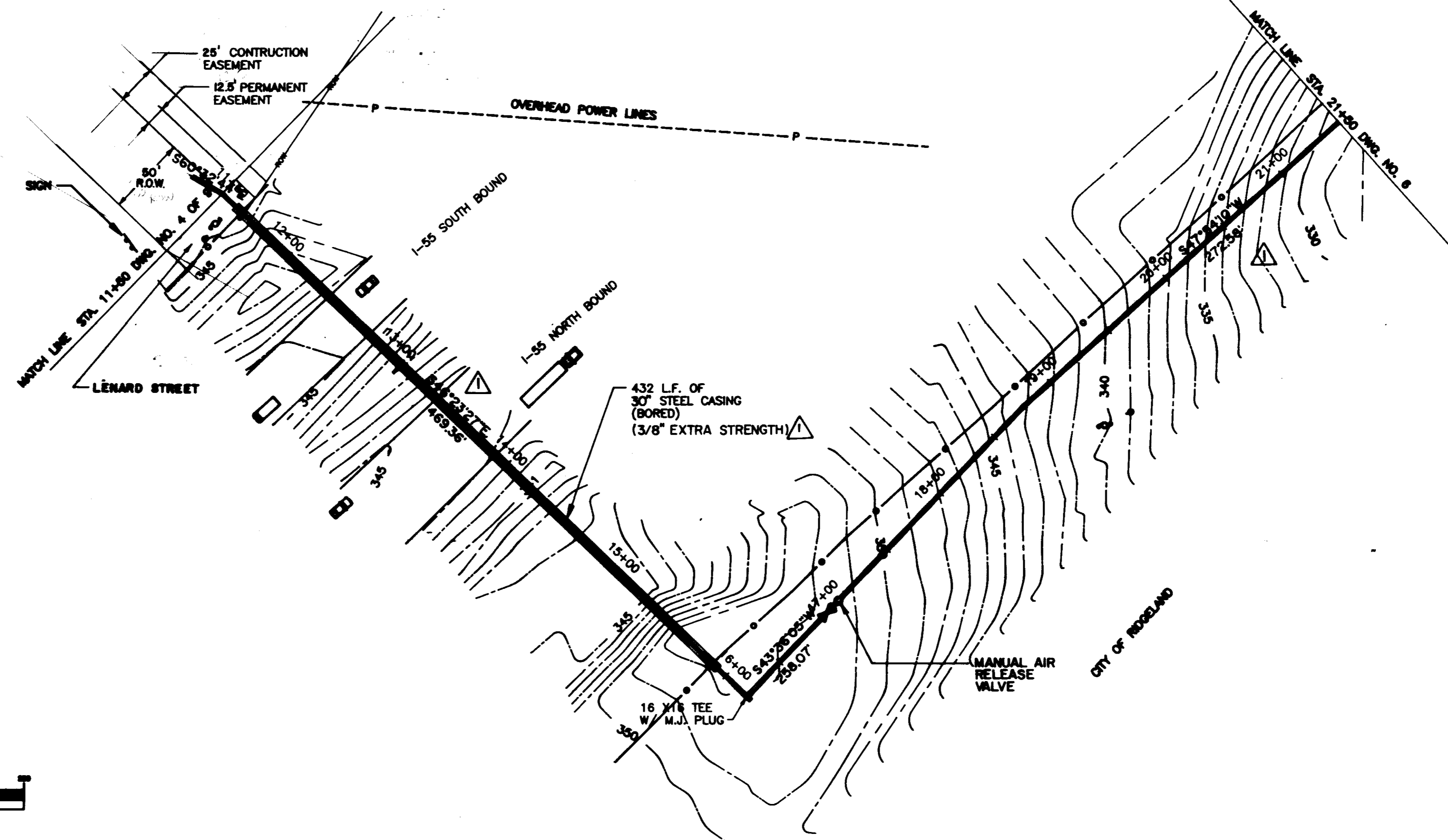


SIXTEEN INCH - WATER LINE
PART 3

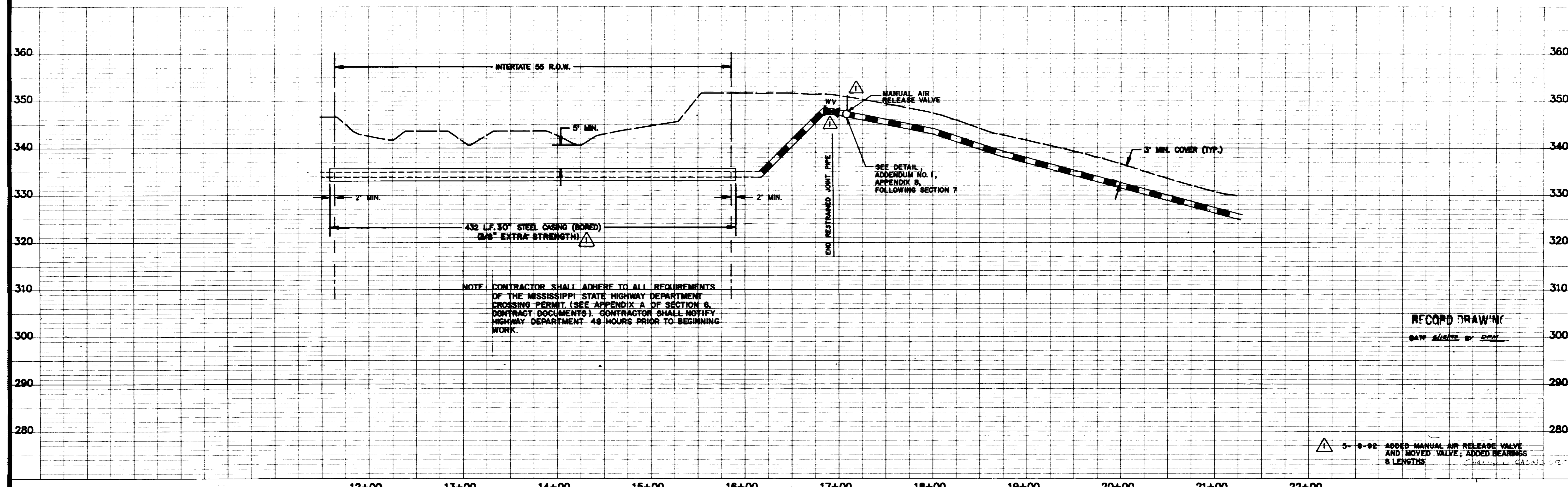
PREPARED FOR:
CITY OF RIDGELAND

- 8-8-92 MOVED VALVE AND CHANGED WIDTH OF EASEMENT, ADDED BEARINGS & LENGTHS, ADDED TBM
- 8-14-92 DIMENSIONED EASEMENTS

DESIGN: <i>[Signature]</i>	DATE: 4/2/92		DRAWING NO.
DRAWN: RDS	CHKD: CDS		4.2 OF 9
SCALE: AS SHOWN			



SCALE 1"=50' HORIZ.
1"=10' VERT.



NOTE: CONTRACTOR SHALL ADHERE TO ALL REQUIREMENTS OF THE MISSISSIPPI STATE HIGHWAY DEPARTMENT CROSSING PERMIT. (SEE APPENDIX A OF SECTION 6, CONTRACT DOCUMENTS). CONTRACTOR SHALL NOTIFY HIGHWAY DEPARTMENT 48 HOURS PRIOR TO BEGINNING WORK.

SEE DETAIL, APPENDIX B, FOLLOWING SECTION 7

RECORD DRAWING
DATE 5/15/92 BY [Signature]

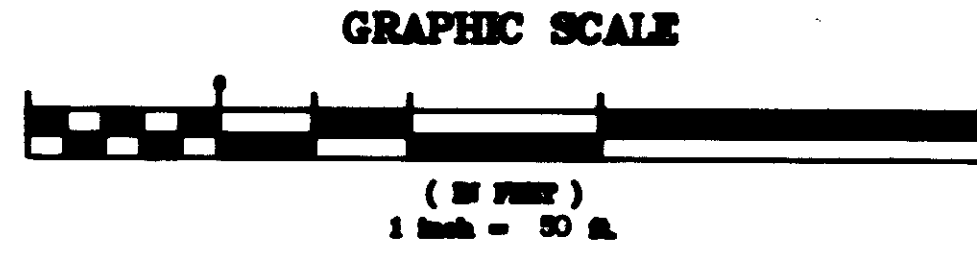
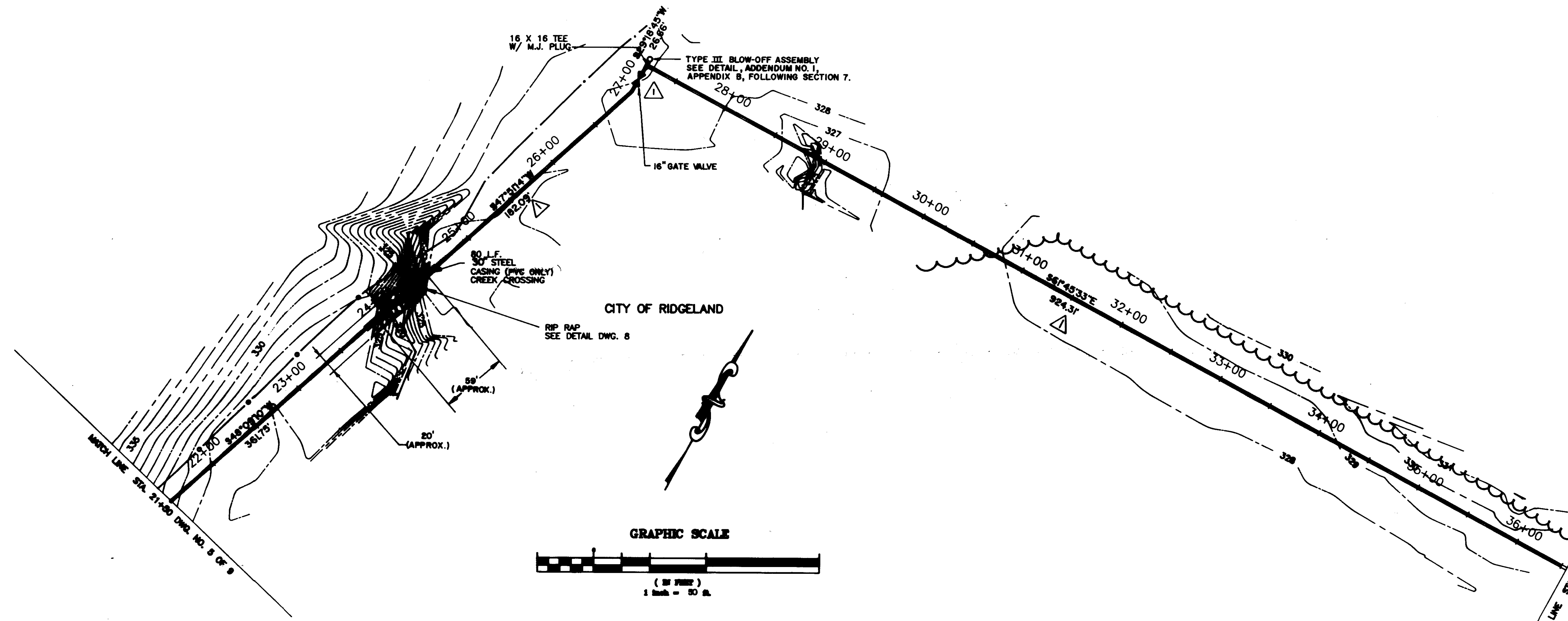
5-8-92 ADDED MANUAL AIR RELEASE VALVE AND MOVED VALVE; ADDED BEARINGS & LENGTHS. CHECKED G.A.S.

SIXTEEN INCH - WATER LINE

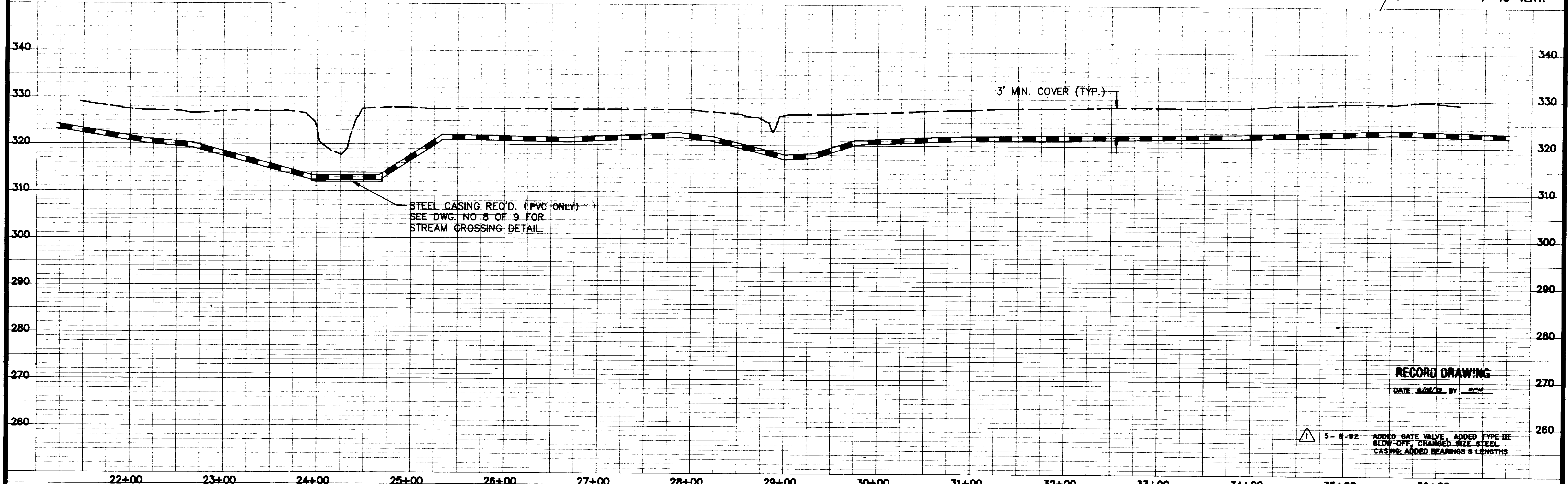
PREPARED FOR:
CITY OF RIDGELAND

DESIGN: [Signature] S/PL
DRAWN: ROB S/PL
CHECKED: CDS S/PL
SCALE: As Shown

DRAWING NO.
51 of 9



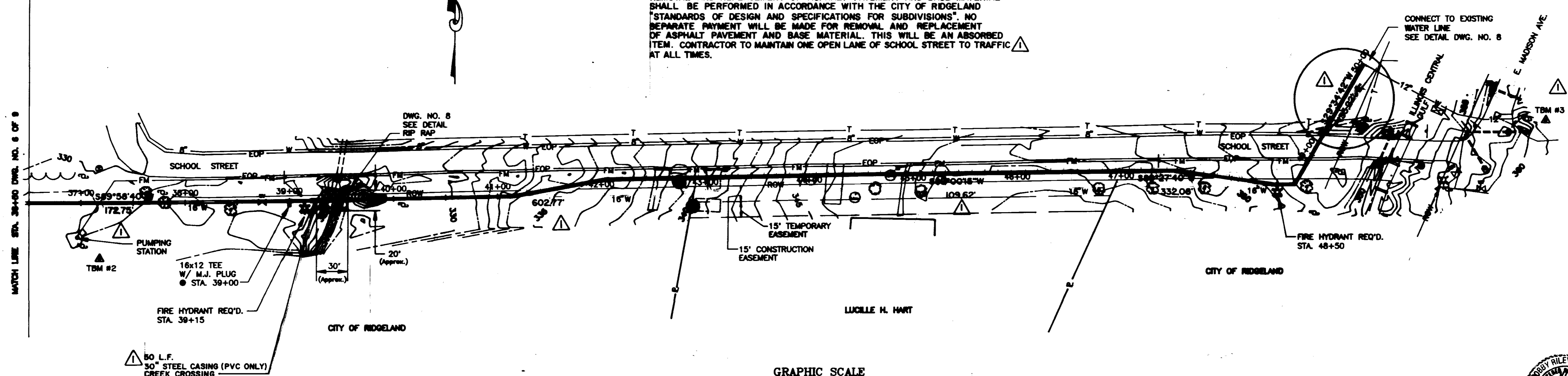
SCALE 1"=50' HORIZ.
1"=10' VERT.



RECORD DRAWING
DATE 2/20/92 BY [Signature]

5-8-92 ADDED GATE VALVE, ADDED TYPE III BLOW-OFF, CHANGED SIZE STEEL CASING; ADDED BEARINGS & LENGTHS

NOTE:
 REMOVAL AND REPLACEMENT OF ASPHALT PAVEMENT AND BASE MATERIAL SHALL BE PERFORMED IN ACCORDANCE WITH THE CITY OF RIDGELAND "STANDARDS OF DESIGN AND SPECIFICATIONS FOR SUBDIVISIONS". NO SEPARATE PAYMENT WILL BE MADE FOR REMOVAL AND REPLACEMENT OF ASPHALT PAVEMENT AND BASE MATERIAL. THIS WILL BE AN ABSORBED ITEM. CONTRACTOR TO MAINTAIN ONE OPEN LANE OF SCHOOL STREET TO TRAFFIC AT ALL TIMES.

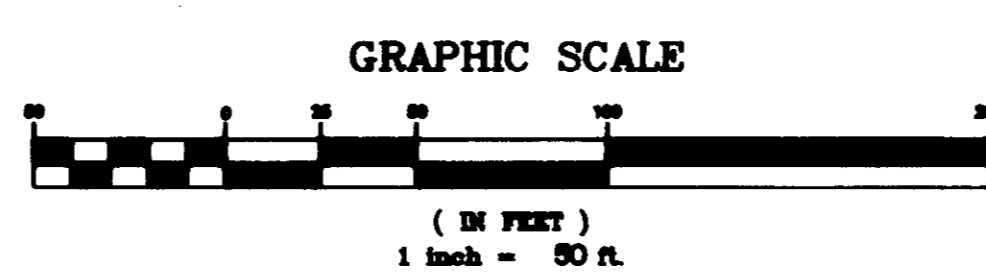


MATCH LINE STA. 36+00 DWG. NO. 6 OF 9

CONNECT TO EXISTING WATER LINE SEE DETAIL DWG. NO. 8

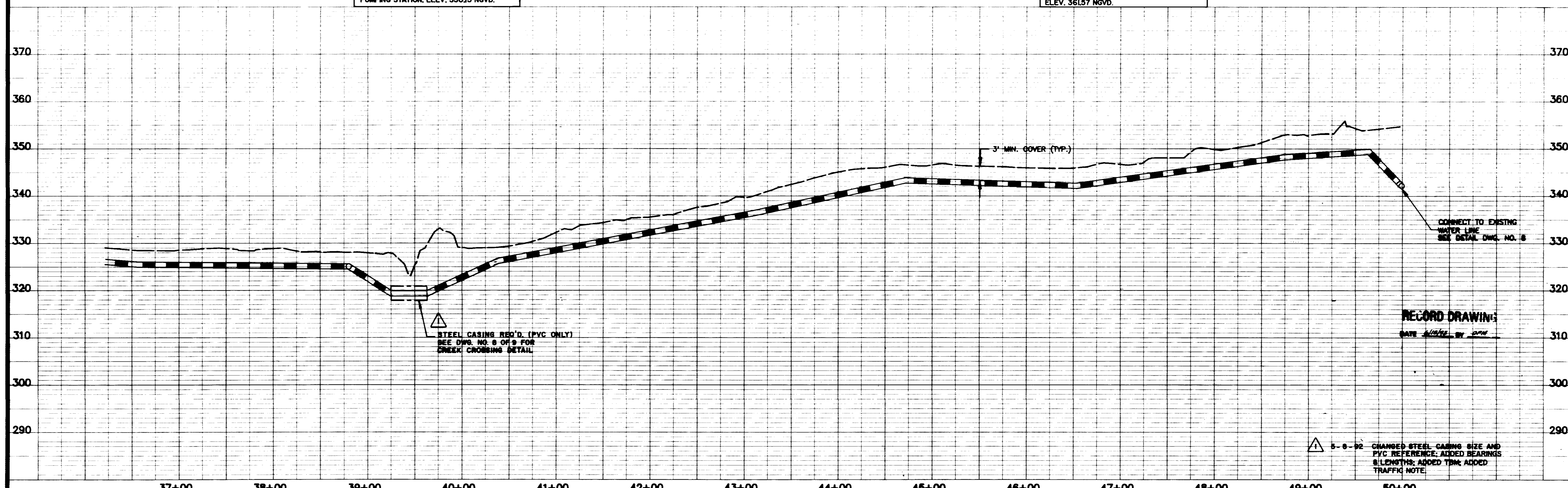
50 L.F. 30" STEEL CASING (PVC ONLY) CREEK CROSSING

TBM #2 RAILROAD SPIKE IN A 20" PECAN TREE APPROX. 115 FEET SOUTHWEST OF THE CENTERLINE OF SCHOOL STREET AND APPROX. 35 FEET SOUTHWEST OF A SMALL PUMPING STATION. ELEV. 330.15 NGVD.



TBM #3 RAILROAD SPIKE IN POWER POLE APPROX. 25 FEET EAST OF THE CENTERLINE OF EAST MADISON AVE. AND APPROX. 40 FEET NORTH OF THE CENTERLINE OF SCHOOL ST. ELEV. 361.57 NGVD.

SCALE 1"=50' HORIZ.
 1"= 10' VERT.



STEEL CASING REQ'D. (PVC ONLY) SEE DWG. NO. 6 OF 9 FOR CREEK CROSSING DETAIL

3' MIN. COVER (TYP.)

CONNECT TO EXISTING WATER LINE SEE DETAIL DWG. NO. 8

RECORD DRAWING
 DATE 11/11/92 BY [signature]

5-8-92 CHANGED STEEL CASING SIZE AND PVC REFERENCE. ADDED BEARINGS & LENGTHS. ADDED TBM. ADDED TRAFFIC NOTE

SIXTEEN INCH - WATER LINE

PREPARED FOR:
 CITY OF RIDGELAND

DESN: [signature]	DATE: 2/92
DRWN: [signature]	DATE: 2/92
CHKD: [signature]	DATE: 4/92
SCALE: AS SHOWN	

DRAWING NO.
 71 of 9

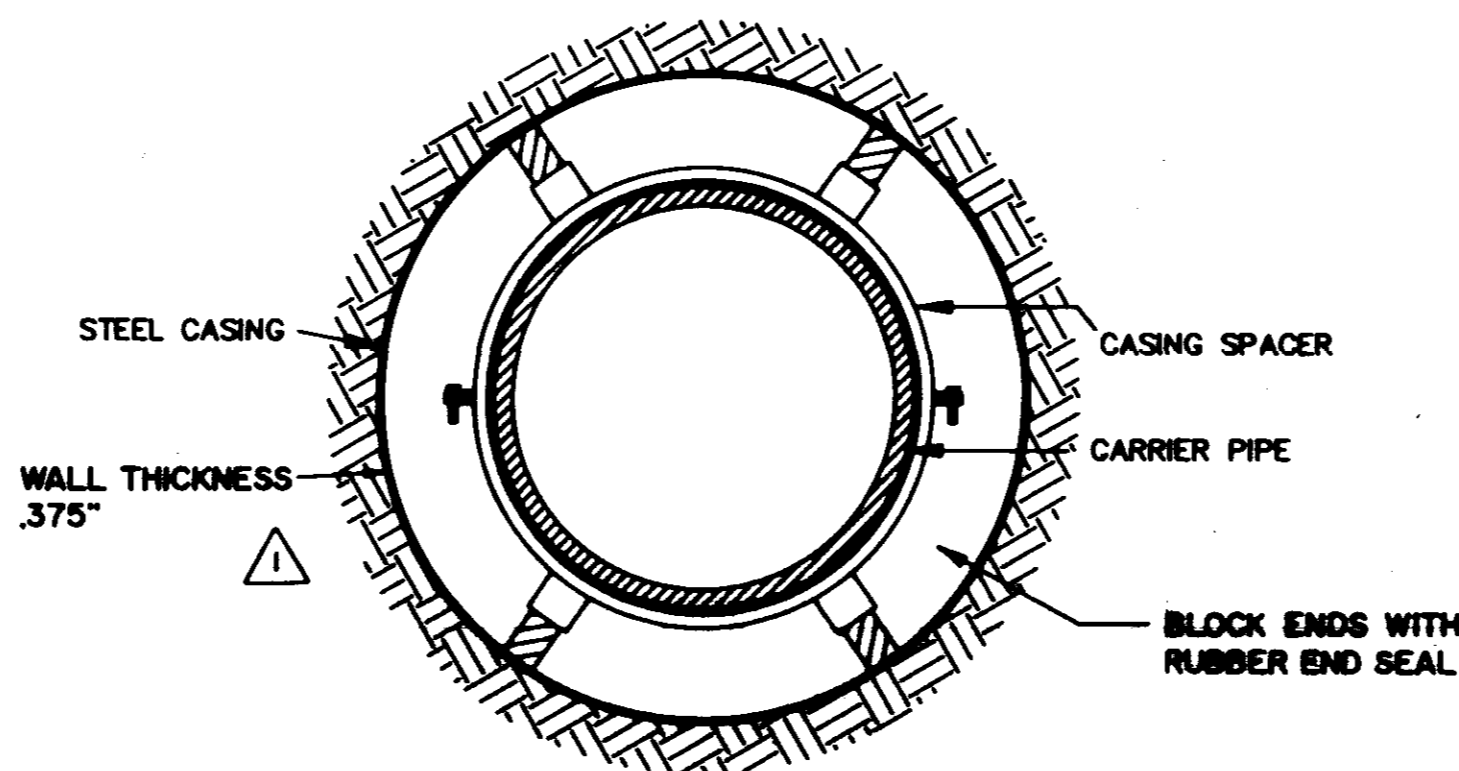
BEARING AREA IN SQ. FT.

NOMINAL PIPE DIAMETER (IN)	BEARING AREA IN SQ. FT.					VERTICAL BENDS					
	DEAD-END OR TEE	90° BEND	45° BEND	22 1/2° BEND	11 1/4° BEND	NOMINAL PIPE DIAMETER (IN)	DEAD-END OR TEE	90° BEND	45° BEND	22 1/2° BEND	11 1/4° BEND
6	2.5	3.0	2.0	2.0	2.0	6	—	—	26.0(1.0)	14.0(.5)	7.0(.3)
8	4.0	6.0	3.0	2.0	2.0	8	—	—	45.0(1.7)	25.0(.9)	13.0(.5)
10	6.0	9.0	5.0	2.5	2.0	10	—	—	68.0(2.5)	37.0(1.4)	19.0(.7)
12	9.0	11.0	6.0	3.5	2.0	12	—	—	97.0(3.6)	52.0(1.9)	27.0(1.0)
14	12.0	18.0	9.0	5.0	2.5	14	—	—	130(4.8)	70.0(2.6)	36.0(1.3)
16	16.0	22.5	12.0	6.0	3.0	16	—	—	168(6.2)	91.0(3.4)	46.0(1.7)
18	20.0	28.0	15.0	8.0	4.0	18	—	—	211(7.8)	114(4.2)	58.0(2.2)
20	24.5	34.0	19.0	10.0	5.0	20	—	—	259(9.6)	140(5.2)	72.0(2.6)
24	35.0	49.0	27.0	14.0	7.0	24	—	—	370(13.7)	200(7.4)	102(3.8)
30	54.0	76.0	41.0	21.0	10.0	30	—	—	568(21.1)	308(11.4)	156(5.8)
36	77.0	108.0	58.0	30.0	15.0	36	—	—	814(30.1)	440(16.3)	225(8.3)
42	104.0	148.0	79.0	40.0	20.0	42	—	—	1100(40.7)	595(22.0)	303(11.2)

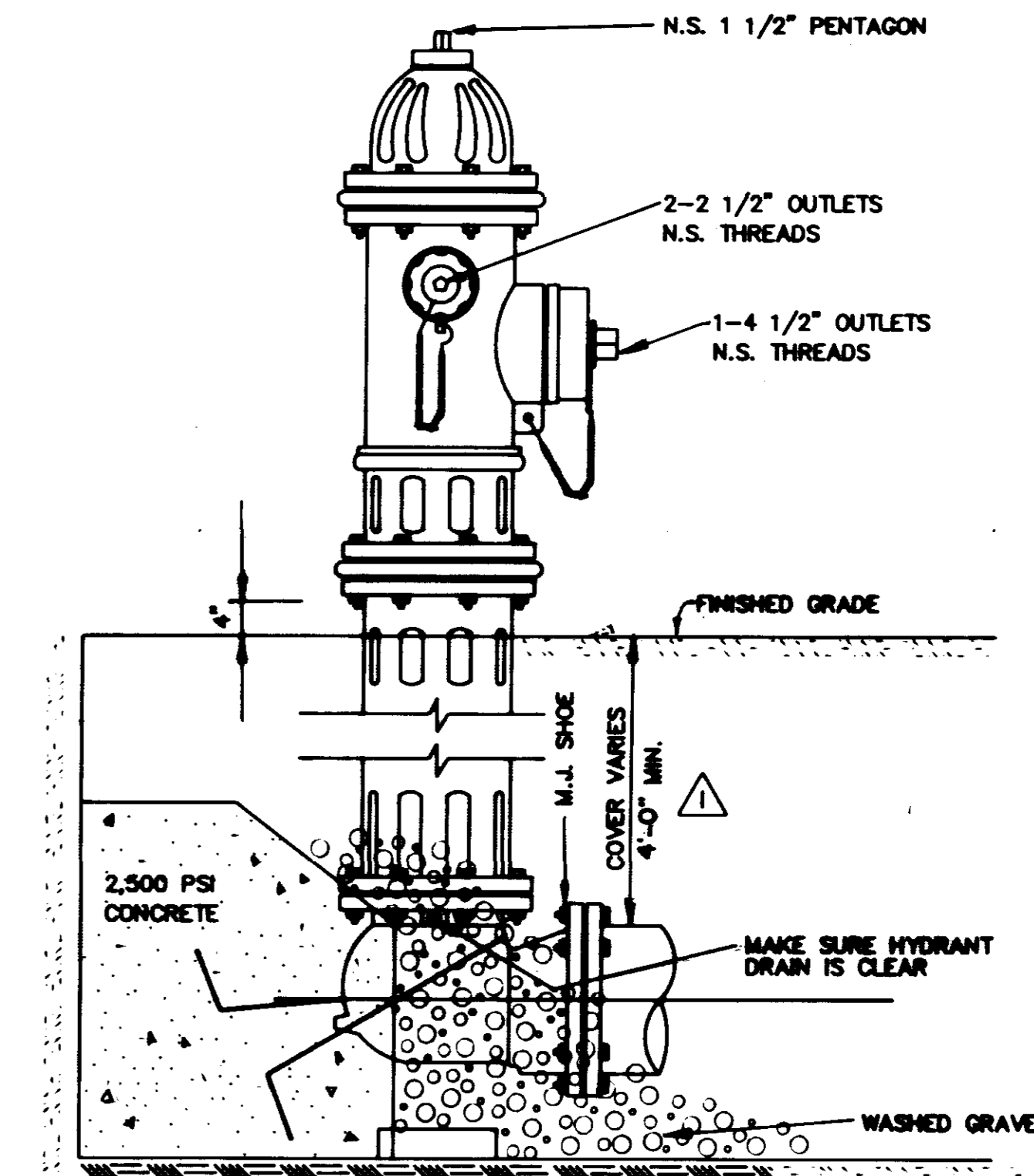
VOLUME OF BLOCKS INCLUDING SOIL LOAD CU. FT. (CU. YDS.)

NOTE:
ABOVE VALUES CALCULATED USING P=100 AND ALLOWANCE SOIL BRG. = 1500 PSF. FOR DIFFERENT P, MULTIPLY ABOVE VALUES BY P/100.
FOR DIFFERENT SOIL BRG, MULTIPLY ABOVE VALUES BY 1500/S.B.

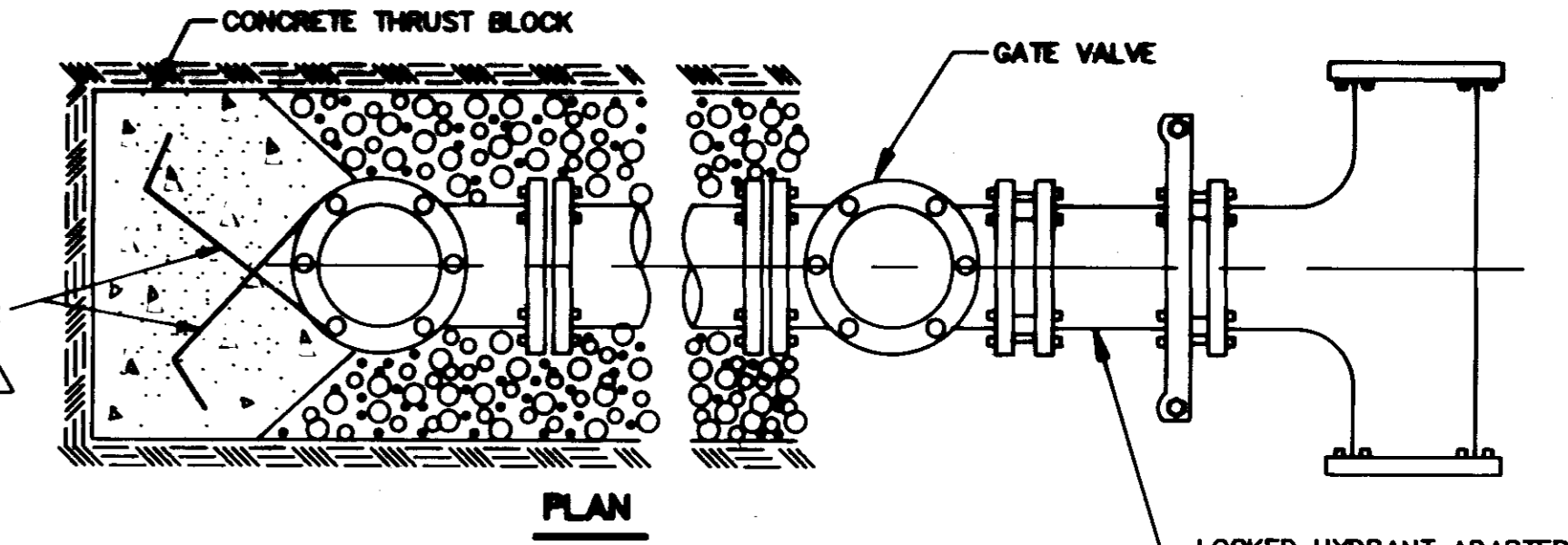
NOTE:
ABOVE VALUES REPRESENT THE VOLUME OF BLOCKS INCLUDING SOIL LOAD IN CU.FT. (CU.YDS.) THE VALUES WERE CALCULATED USING A P=100 PSI AND A S.F.=1.5. FOR DIFFERENT P, MULTIPLY VALUES BY P/100.



BORE SECTION
N.T.S.

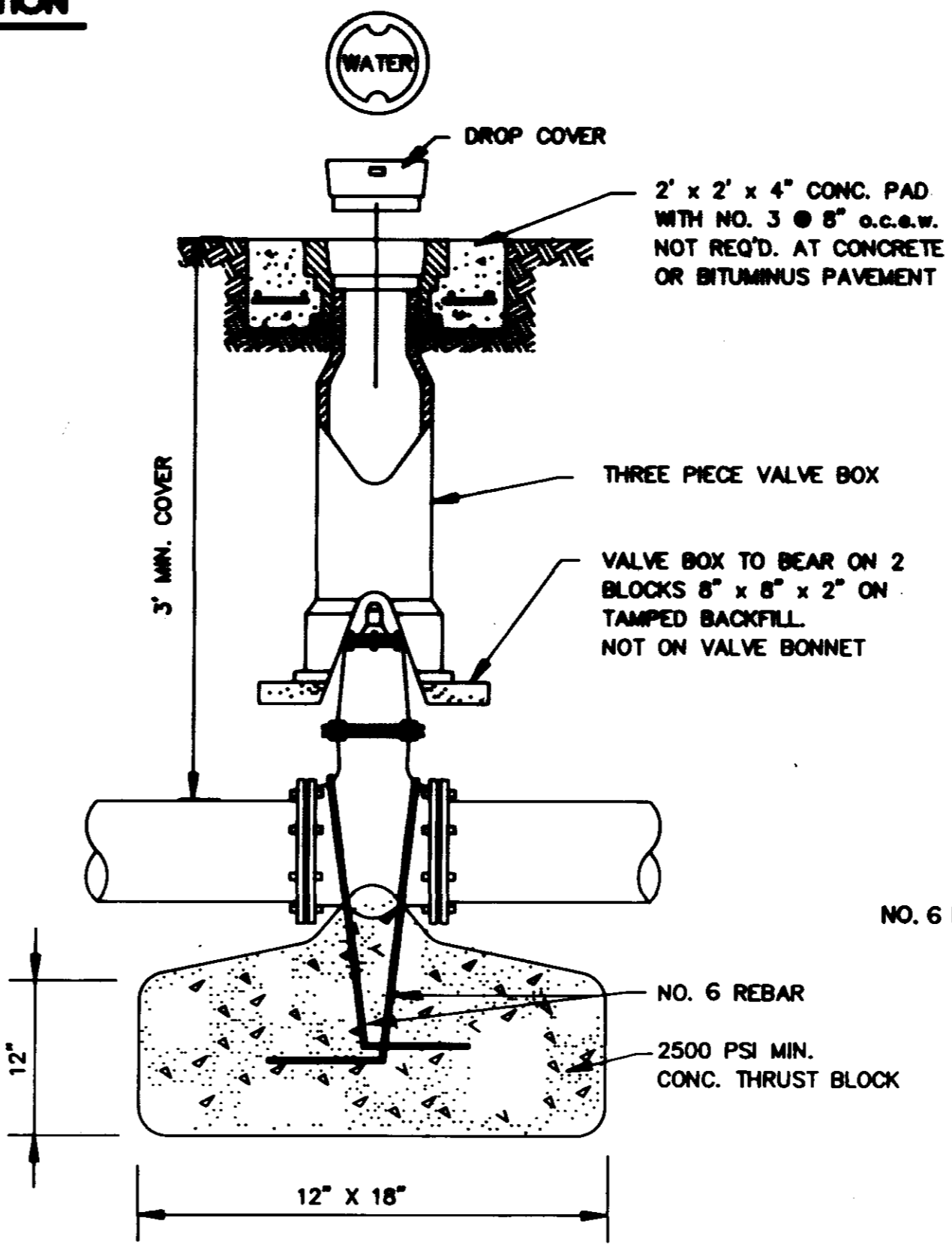


ELEVATION

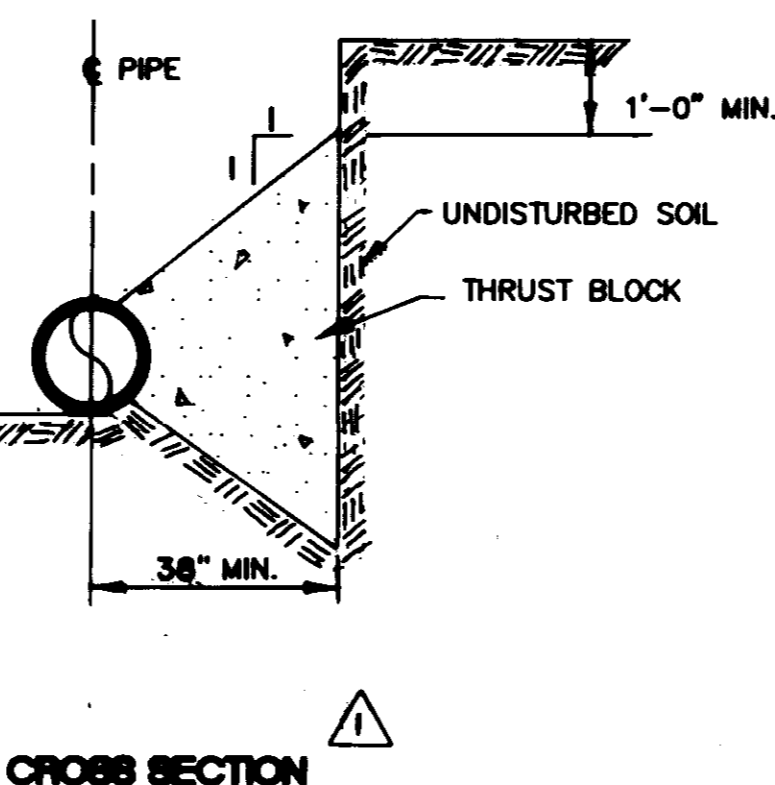
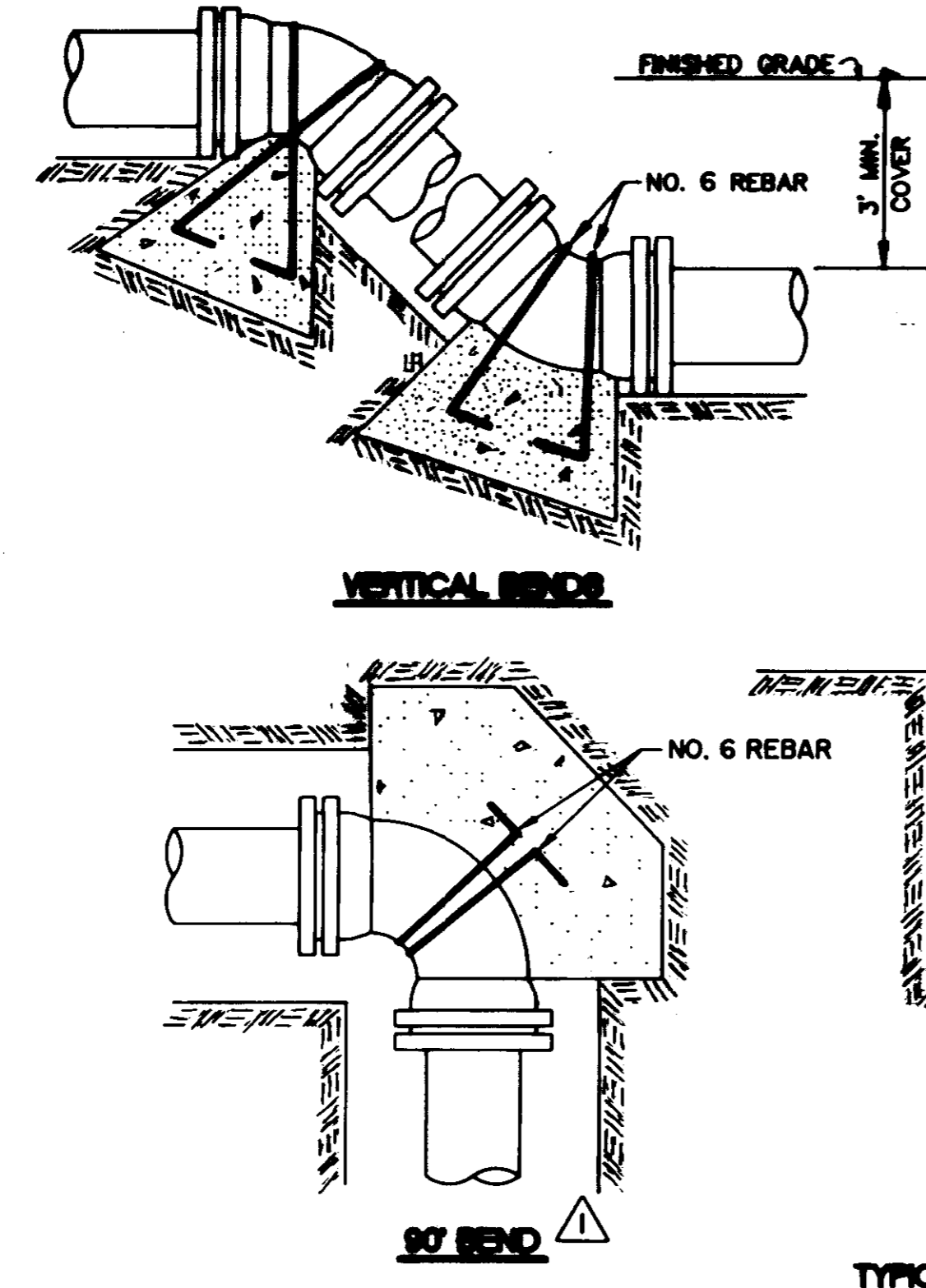
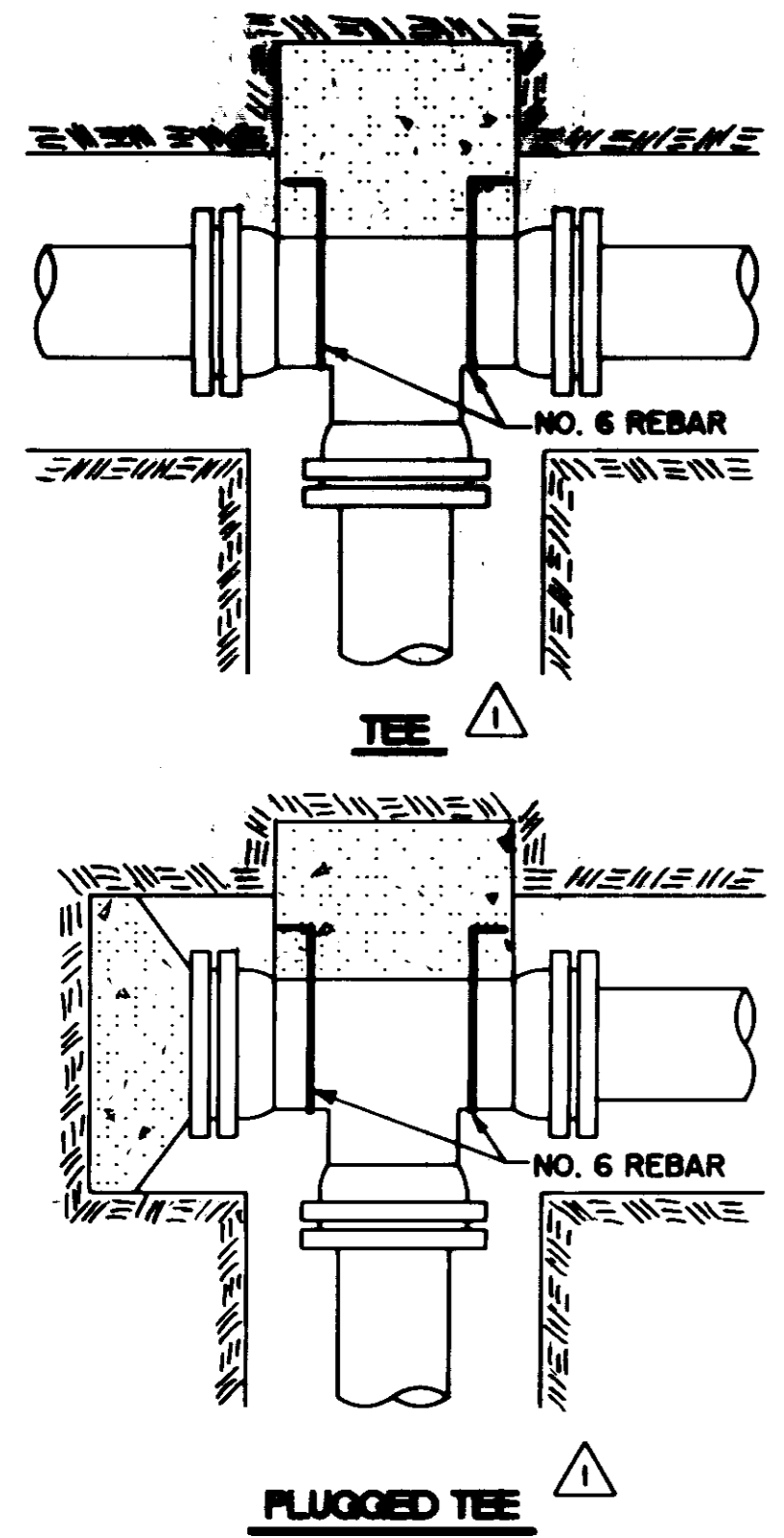


TYPICAL FIRE HYDRANT INSTALLATION

NOTE: GATE VALVES WILL BE REQUIRED ON ALL FIRE HYDRANT LEGS.
N.T.S.

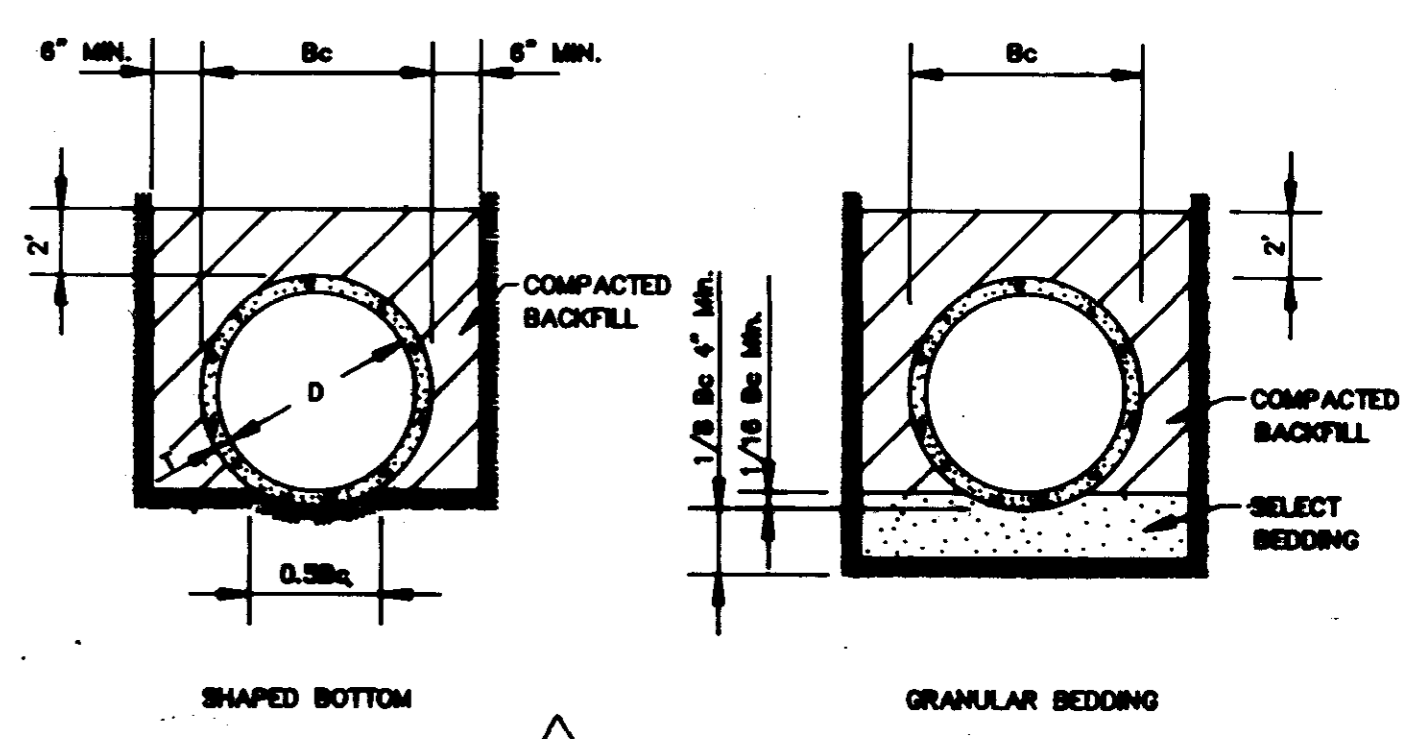


GATE VALVE DETAIL
N.T.S.



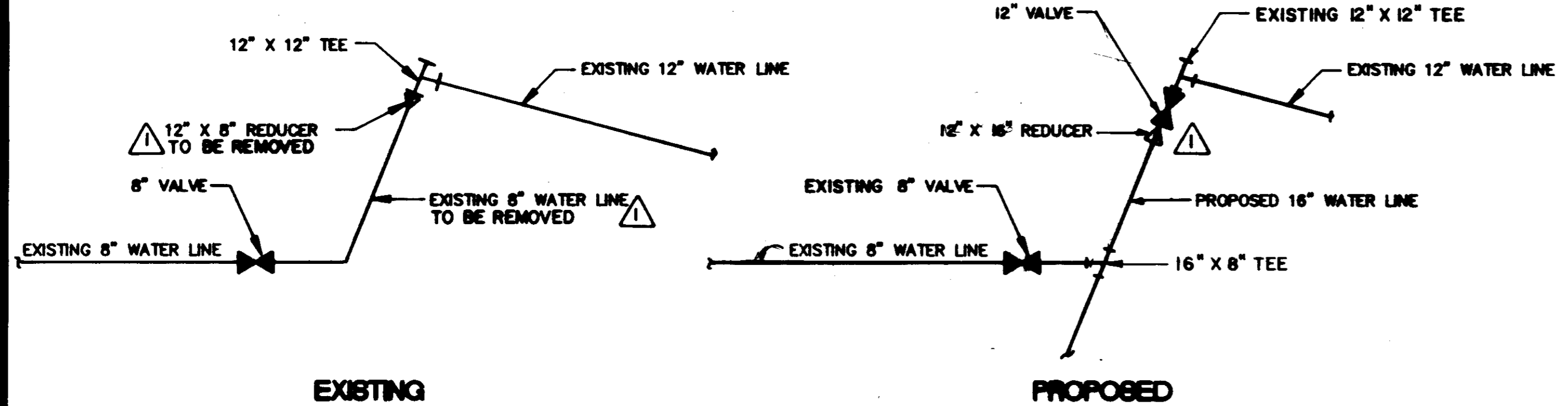
TYPICAL THRUST BLOCKING IN WATER MAINS AND SEWAGE FORCE MAINS

N.T.S.
NOTE: ALL THRUST BLOCKS 2,500 PSI CONCRETE AGAINST UNDISTURBED EARTH



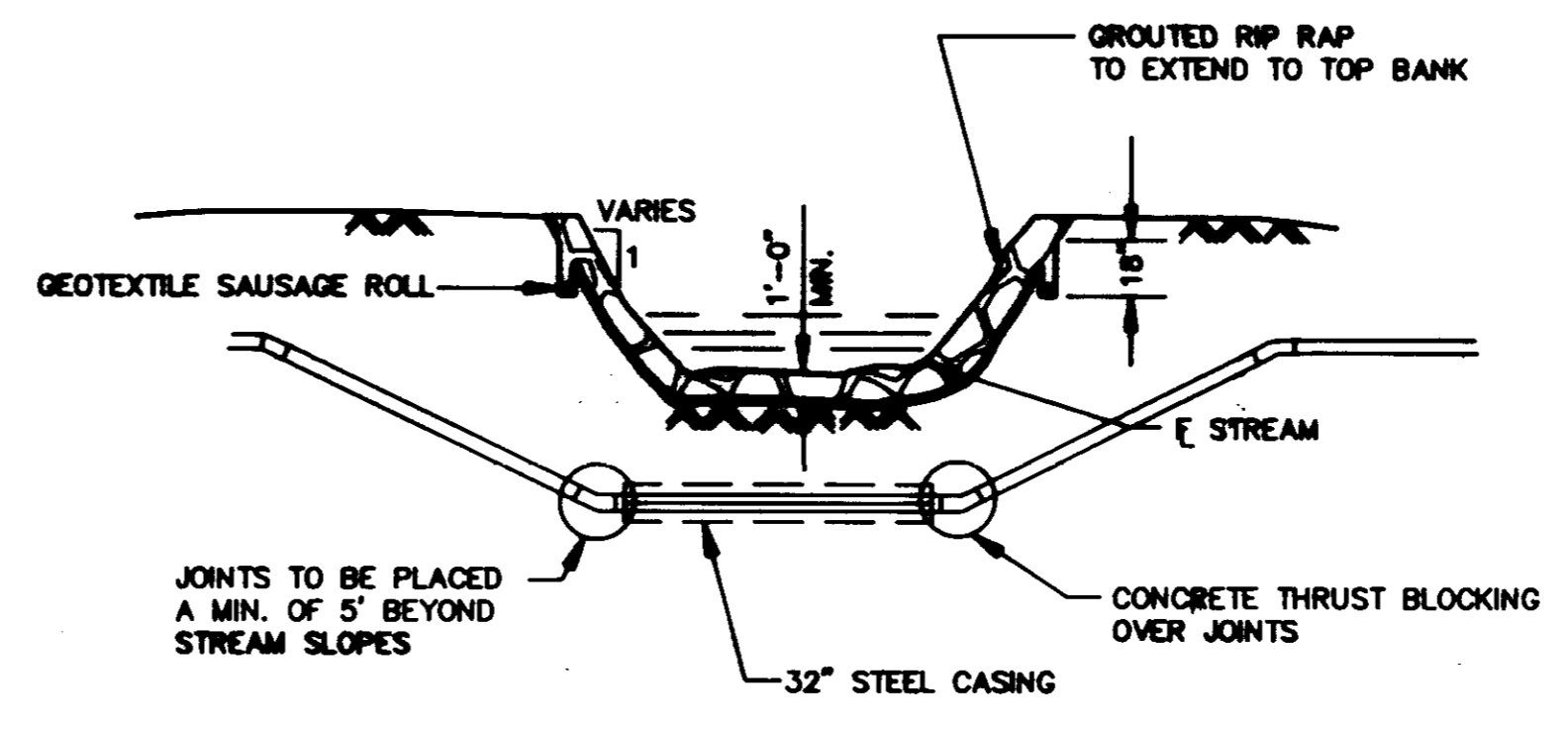
TYPICAL TRENCH DETAILS
N.T.S.

8-9-92 CHANGED WATER LINE CONNECTION CALLED OUT REBAR, REV. THRUST BLOCKS, REV. COVER ON F.A., REV. TRENCH TYPE.



SIXTEEN INCH WATER LINE CONNECTION TO EXISTING

N.T.S.



TYPICAL STREAM CROSSING

N.T.S.

RECORD DRAWING
DATE 11/28/01



CITY OF RIDGELAND
SIXTEEN INCH WATER LINE
HS ACCOUNT NO. 9-284-01

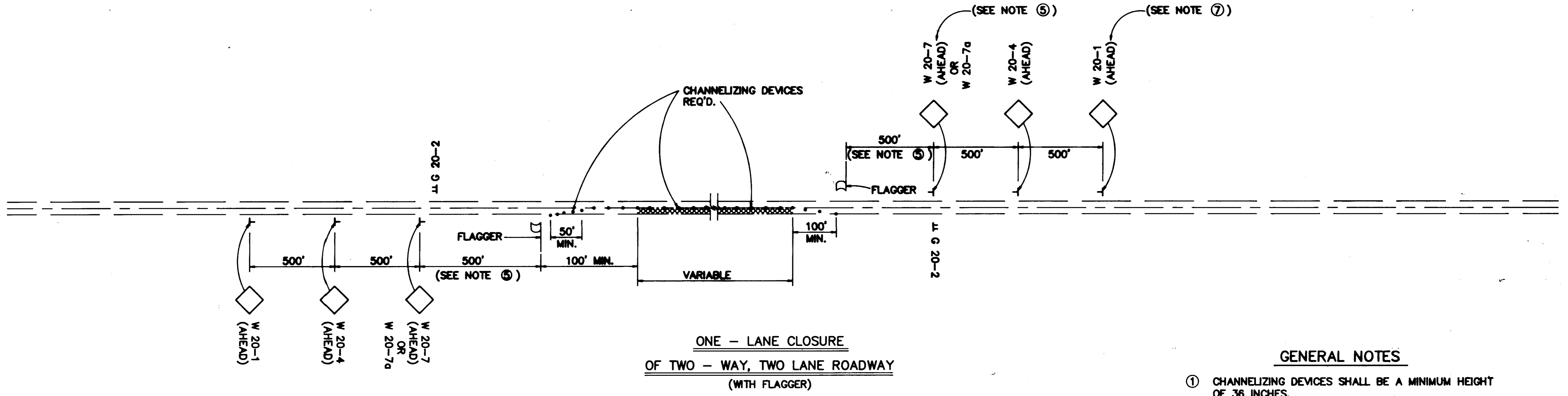
MISCELLANEOUS DETAILS

CITY OF RIDGELAND, MISSISSIPPI

NO. 1025 4/12
NO. 225 4/12
SCALE: NONE

NO. 1025 4/12
NO. 225 4/12
SCALE: NONE

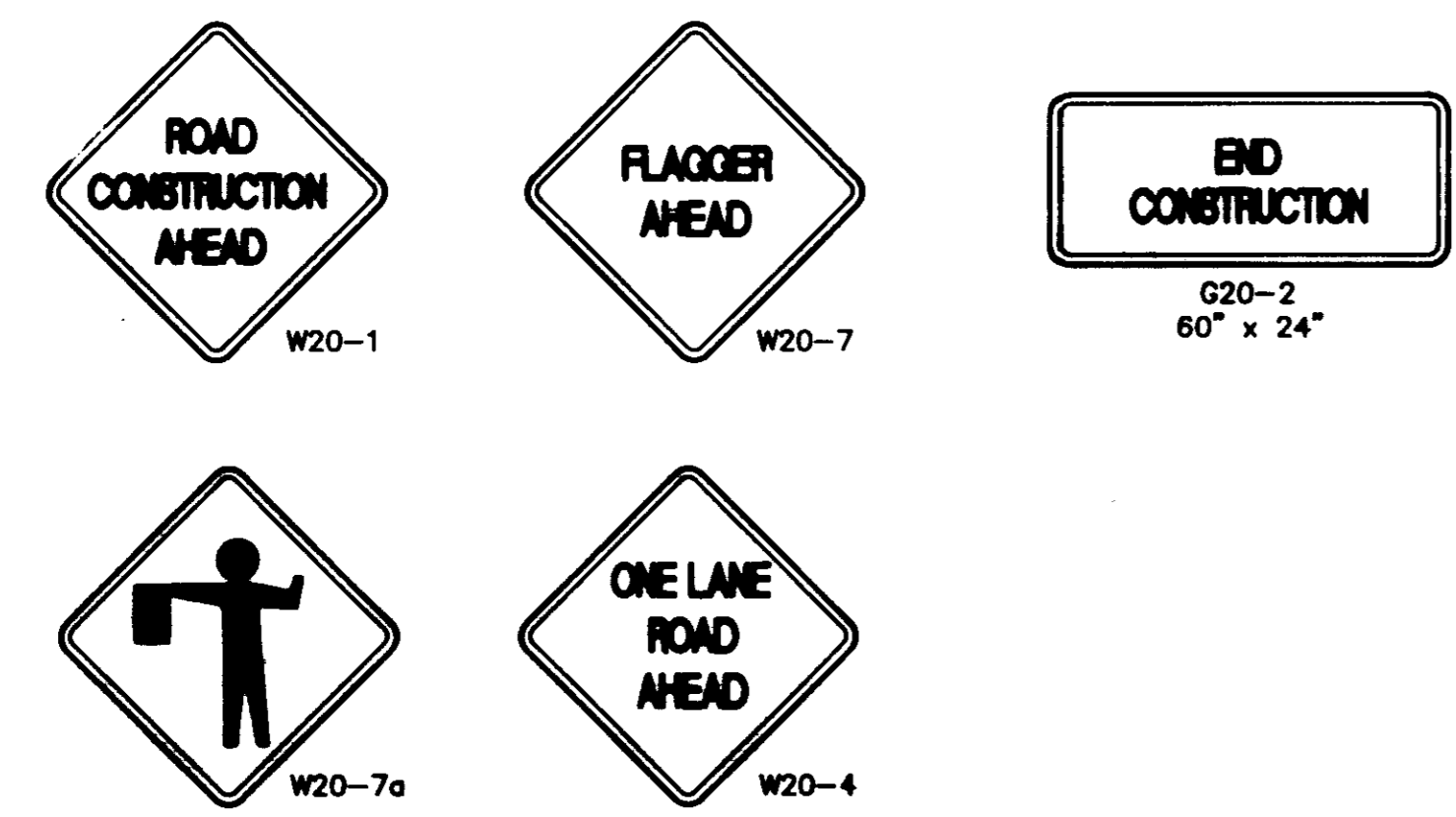
8.1 of 9



**ONE - LANE CLOSURE
OF TWO - WAY, TWO LANE ROADWAY
(WITH FLAGGER)**

GENERAL NOTES

- ① CHANNELIZING DEVICES SHALL BE A MINIMUM HEIGHT OF 36 INCHES.
- ② DIAMOND SHAPED TRAFFIC CONTROL SIGNS SHALL BE A MINIMUM OF 36" x 36".
- ③ SPACING OF CHANNELIZING DEVICES ALONG LANE LINE AND WORK ZONE TO BE EQUAL TO THE POSTED SPEED (M.P.H.) IN FEET.
- ④ WHEN THERE IS NO EXISTING HAZARD OR AT THE END OF THE WORK DAY, ALL SIGNS SHALL BE COVERED OR REMOVED AND ALL CHANNELIZING DEVICES SHALL BE MOVED TO THE SHOULDER EDGE.
- ⑤ WHEN THE WORK ZONE IS STATIONARY, THE W20-7 OR W20-7a SIGN SHOULD BE PLACED 500' IN ADVANCE OF THE FLAGGER AND SHOULD INDICATE (500') AS THE DISTANCE.
- ⑥ ALL TRAFFIC CONTROL ITEMS SHOWN ON THIS SHEET WILL NOT BE MEASURED FOR SEPARATE PAYMENT. THIS WORK IS TO BE INCLUDED IN THE PRICE BID FOR MAINTENANCE OF TRAFFIC.
- ⑦ INSTALL W 20-1 SIGN ON BOTH APPROACHES OF MADISON AVE. TO SCHOOL STREET.
- ⑧ W 20-1 SIGNS ARE TO BE INSTALLED ONCE WORK BEGINS NEAR SCHOOL STREET.



RECORD DRAWING
DATE 4/15/12 BY DM



CITY OF RIDGELAND SIXTEEN INCH WATER LINE NB. ACCOUNT NO. 9-894-01	
TRAFFIC CONTROL PLAN	
CITY OF RIDGELAND, MISSISSIPPI	
<small>DESIGNED BY: [Signature]</small> <small>DRAWN BY: [Signature]</small> <small>CHECKED BY: [Signature]</small> <small>SCALE: NONE</small>	<small>ENGINEER: [Signature]</small> <small>REGISTERED PROFESSIONAL ENGINEER</small> <small>STATE OF MISSISSIPPI</small> <small>NO. 10845</small> <small>MARK G. BAILEY</small>