

# SCHOOL STREET & WHEATLEY STREET

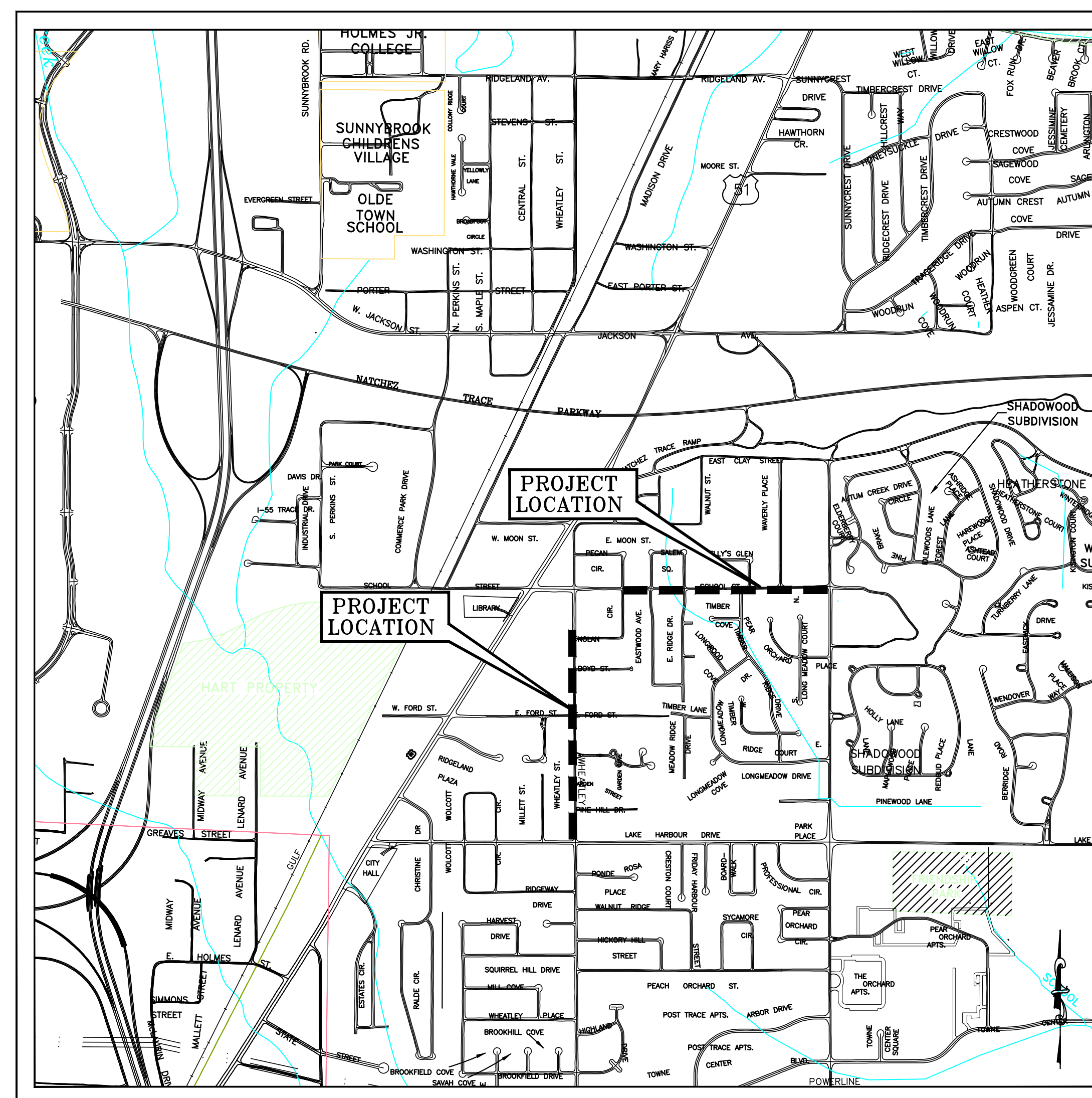
## WATER LINE RELOCATION

### CITY OF RIDGELAND, MISSISSIPPI

#### EPA GRANT NUMBER XP-95416710-0

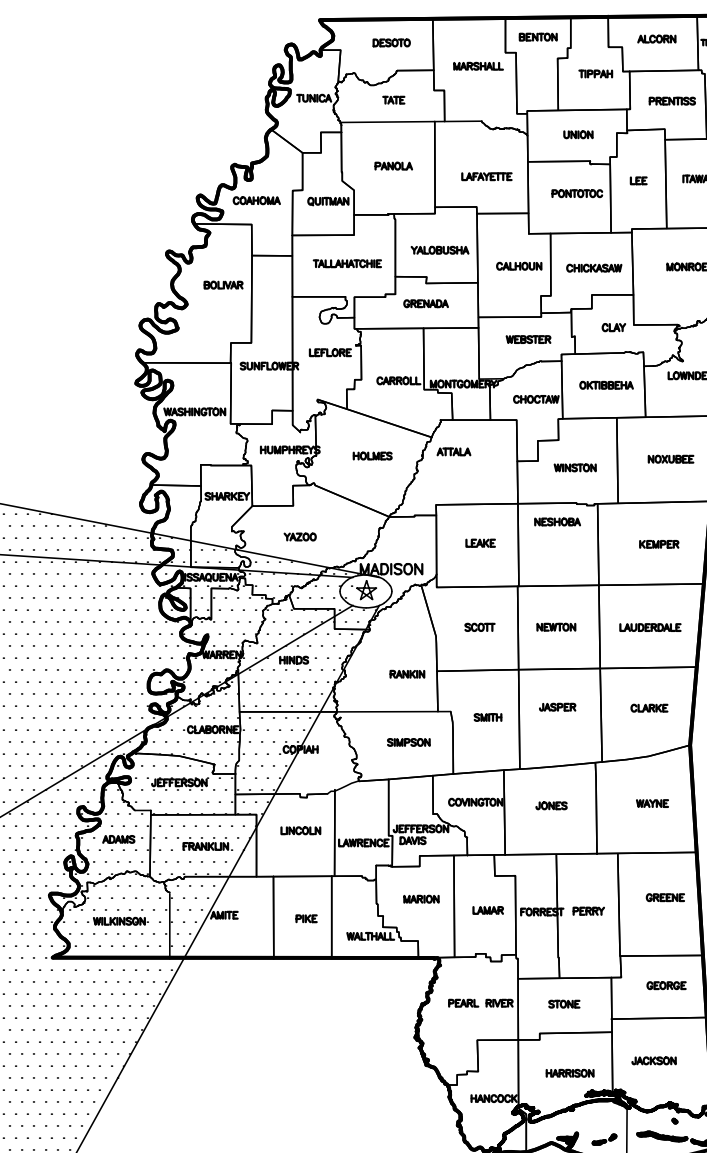
**SCHOOL STREET & WHEATLEY STREET  
 WATER LINE RELOCATION  
 CITY OF RIDGELAND, MISSISSIPPI  
 EPA GRANT # XP-95416710-0**

INDEX TO DRAWINGS	
SHEET NO.	TITLE
G1.0	COVER
G1.1	SCHOOL STREET VICINITY MAP & GENERAL NOTES
G1.2	WHEATLEY STREET VICINITY MAP
PP1.1	SCHOOL STREET PLAN VIEW
PP1.2	SCHOOL STREET PLAN VIEW
PP1.3	SCHOOL STREET PLAN VIEW
PP1.4	SCHOOL STREET PLAN VIEW
PP1.5	SCHOOL STREET PLAN VIEW
PP2.1	WHEATLEY STREET PLAN VIEW
PP2.2	WHEATLEY STREET PLAN VIEW
PP2.3	WHEATLEY STREET PLAN VIEW
SD1.1	STANDARD WATER DETAILS
SD1.2	STANDARD WATER DETAILS



VICINITY MAP

JANUARY 2011  
 WEI # W09-083



MAYOR  
 GENE MCGEE

BOARD OF ALDERMAN  
 GERALD STEEN  
 KEN HEARD  
 CHUCK GAUTIER  
 KEVIN HOLDER  
 BRIAN RAMSEY  
 SCOTT JONES  
 WESLEY HAMLIN

PUBLIC WORKS DIRECTOR  
 MIKE McCOLLUM

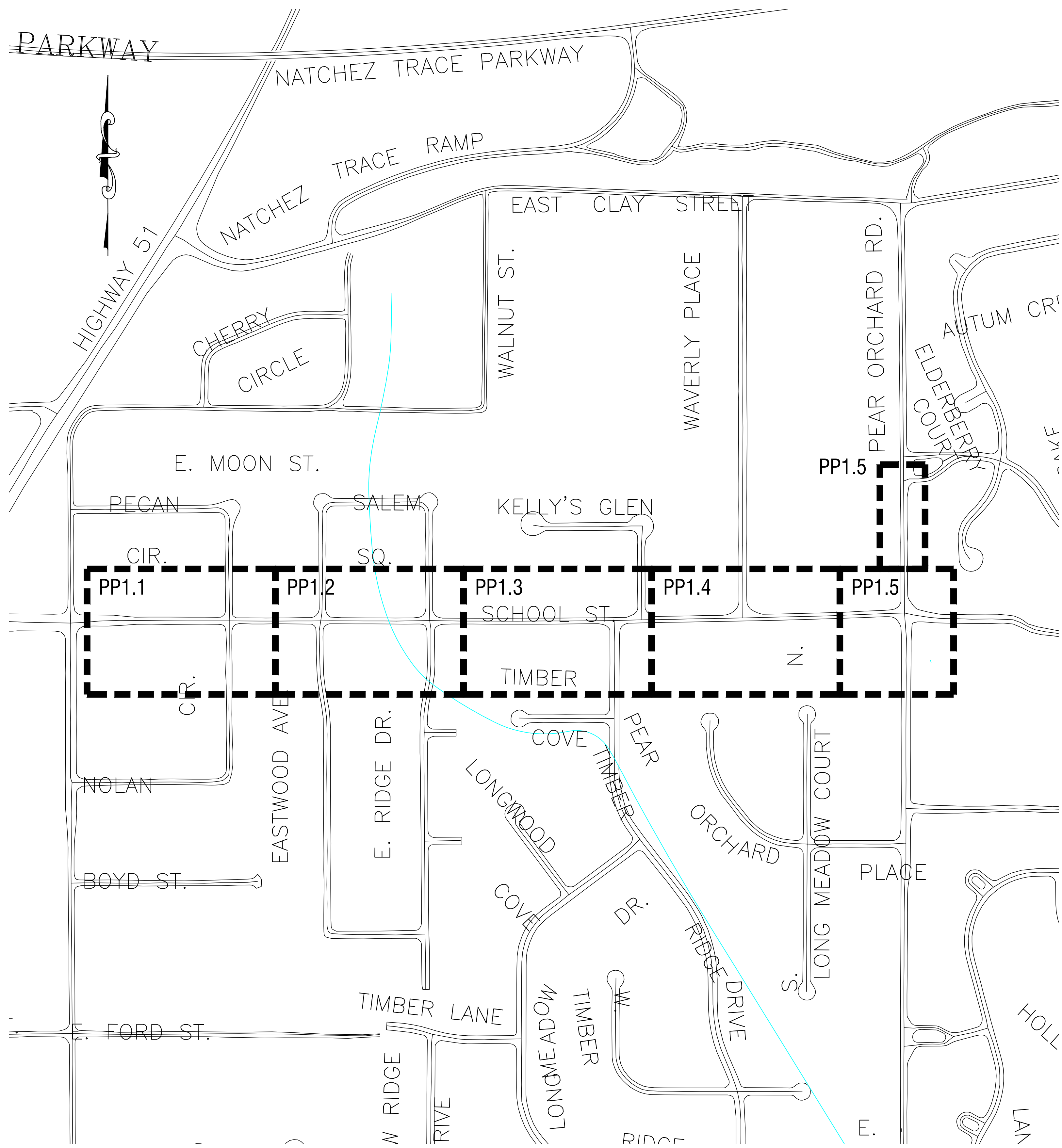
DRAWING REVISIONS		
NO.	REMARKS	DATE

DRAWN BY:	TFM	SCALE:	N.T.S.
DESIGNED BY:	BGG	DATE:	01/07/11
CHECKED BY:	CTK	PROJECT:	W09-083
DRAWING TITLE:			

**RECORD DRAWING** - February 7, 2011  
 THIS RECORD DRAWING HAS BEEN PREPARED BASED ON INFORMATION FURNISHED BY OTHERS. WHILE THIS INFORMATION FURNISHED IS ASSUMED TO BE RELIABLE, THE DESIGN CONSULTANT CANNOT ASSURE ITS ACCURACY. THE DESIGN CONSULTANT WILL NOT BE RESPONSIBLE FOR ANY ERRORS OR OMISSIONS WHICH MAY HAVE BEEN INCORPORATED INTO THIS RECORD DRAWING AS A RESULT. THOSE RELYING ON THIS RECORD DRAWING MUST OBTAIN INDEPENDENT VERIFICATION OF ITS ACCURACY BEFORE APPLYING IT FOR ANY PURPOSE.

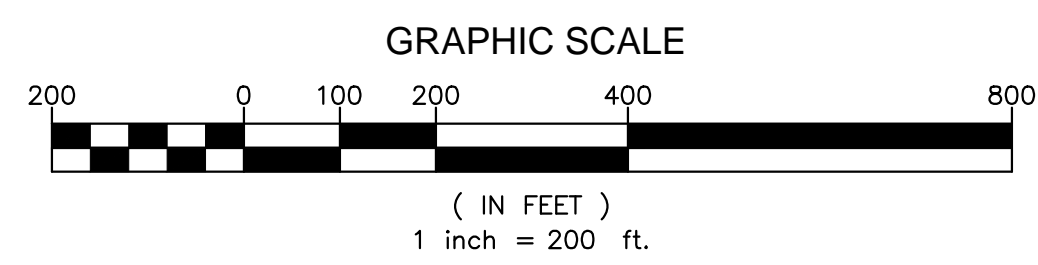
COVER

SHEET NUMBER:  
 G1.0



**GENERAL CONSTRUCTION NOTES**

1. ANY EXISTING UTILITY LOCATIONS SHOWN ON PLANS ARE APPROXIMATE ONLY. THE CONTRACTOR SHALL COORDINATE THE LOCATION (HORIZONTAL AND VERTICAL) OF ANY EXISTING UTILITIES (POWER, TELEPHONE, GAS, WATER, SEWER, ETC.) WITH THE APPROPRIATE UTILITY COMPANY BEFORE CONSTRUCTION BEGINS.
2. ANY UTILITY LINE OR SERVICE LINE ENCOUNTERED DURING CONSTRUCTION, WHETHER SHOWN ON PLANS OR NOT, SHALL BE PROTECTED BY THE CONTRACTOR AND ANY REPAIRS NECESSARY DUE TO DAMAGE TO SAME BY THE CONTRACTOR SHALL BE AT NO ADDITIONAL COST TO THE OWNER.
3. THE CONTRACTOR SHALL BE RESPONSIBLE FOR VERIFYING HORIZONTAL AND VERTICAL CLEARANCES ON ANY UTILITY SERVICE CROSSINGS REQUIRED BEFORE INSTALLATION.
4. THE CONTRACTOR SHALL SOLID SOD ALL AREAS WHERE THE EXISTING VEGETATION WAS REMOVED OR DISTURBED DURING CONSTRUCTION AND NOT REQUIRED TO BE PAVED OR GRAVELED.
5. HORIZONTAL AND VERTICAL CONTROL DATA WILL BE PROVIDED TO THE CONTRACTOR BY THE ENGINEER PRIOR TO START OF CONSTRUCTION.
6. ANY TBM'S WHICH ARE OR MAY BE IN CONFLICT WITH CONSTRUCTION ACTIVITIES SHALL BE RELOCATED BY ENGINEER PRIOR TO COMMENCEMENT OF CONSTRUCTION IN THE IMMEDIATE AREA.
7. ALL DETAILED CONSTRUCTION STAKING WILL BE BY CONTRACTOR AS AN ABSORBED COST ITEM.
8. THE CONTRACTOR SHALL BE RESPONSIBLE FOR COMPLETING ALL SAMPLING AND TESTING OF MATERIALS INCORPORATED INTO THE PROJECT AND FOR SUBMISSION OF SAME TO ENGINEER FOR REVIEW. PRIOR USE TEST RESULTS, MANUFACTURER'S CERTIFICATES, OR PROPOSED MIX DESIGNS SHALL BE SUBMITTED TO THE ENGINEER FOR REVIEW BEFORE INCORPORATION INTO PROJECT. THIS SHALL INCLUDE BACKFILL, CONCRETE, STEEL, PAINT, PIPING, FENCING MATERIALS, AGGREGATES, SEED AND OTHER ITEMS AS SPECIFIED BY THE ENGINEER. TESTING SHALL BE AN ABSORBED COST ITEM.
9. ALL TESTING CERTIFICATIONS SHALL STATE THAT THE SUBJECT MATERIAL MEETS THE SPECIFIED QUALITY, GRADE, PURITY, CLASS OR WEIGHT, OR THAT THE SUBJECT MATERIAL MEETS OR EXCEEDS THE REQUIREMENT OF THE APPLICABLE ASTM, AWWA, AASHTO, MSHD OR OTHER STANDARDS. CERTIFICATIONS SHALL BE SUBMITTED TO THE ENGINEER PRIOR TO INCORPORATION OF THE SUBJECT MATERIAL INTO THE PROJECT.
10. THE CONTRACTOR SHALL REPAIR OR REPLACE FENCES, DRIVEWAYS, SIDEWALKS, YARD SURFACES, CURB AND GUTTER SECTIONS, OR OTHER SURFACES AND/OR STRUCTURES WHICH ARE DAMAGED, REMOVED OR OTHERWISE, DISTURBED DURING CONSTRUCTION. REPAIRS SHALL BE TO ORIGINAL CONDITION OR BETTER AND SHALL BE MADE BY USING THE TYPES OF MATERIAL USED DURING CONSTRUCTION AND TO THE COMPLETE SATISFACTION OF THE OWNER AND ENGINEER. SUCH REPAIRS AND/OR REPLACEMENTS SHALL BE AN ABSORBED COST ITEM.
11. THE CONTRACTOR SHALL PROTECT TREES, SHRUBBERY, FLOWERS, SOD AND OTHER VEGETATION, NOT SPECIFIED FOR REMOVAL BY DRAWINGS OR SPECIFICATIONS, AND SHALL REPAIR OR REPLACE SUCH ITEMS AS ARE DAMAGED DURING CONSTRUCTION OF PROJECT WITH THE SAME TYPES AND QUALITY AS THOSE THAT ARE DAMAGED. SUCH REPAIR OR REPLACEMENT SHALL BE TO THE SATISFACTION OF THE ENGINEER AND THE OWNER OF THE PROPERTY INVOLVED, AND SHALL BE AN ABSORBED COST ITEM.
12. THE REPAIR OR REPLACEMENT OF ITEMS NOT LISTED ON THE BID FORM FOR SEPARATE PAYMENT, SHALL BE CONSIDERED AS INCIDENTAL TO THE PROJECT AND THE COST FOR SUCH ITEMS SHALL BE INCLUDED IN THE UNIT PRICE BID FOR CLEARING AND GRUBBING.
13. CONTRACTOR SHALL BE RESPONSIBLE FOR PROTECTION OF EXISTING POWER AND UTILITY POLES AFFECTED BY THE PROJECT ACTIVITY, INCLUDING REMOVAL, REPLACEMENT, RELOCATION AND/OR STABILIZING AND PROTECTING GUYS. CONTRACTOR SHALL COORDINATE ALL SUCH ACTIVITY WITH UTILITY COMPANY. ALL SUCH WORK SHALL BE AN ABSORBED COST ITEM.
14. UNSUITABLE BEDDING, BACKFILL, OR SITE SUBGRADE MATERIAL WHICH MAY BE ENCOUNTERED SHALL BE EXCAVATED TO THE LIMITS REQUIRED AND BACKFILLED WITH ACCEPTABLE MATERIAL TO THE LINES AND GRADES SHOWN ON THE PLANS.
15. CONTRACTOR SHALL RECONNECT ALL EXISTING WATER METERS ALONG THE PROJECT TO THE NEW WATER LINE. ALL SUCH WORK SHALL BE AN ABSORBED COST ITEM.



**RECORD DRAWING** - February 7, 2011  
 THIS RECORD DRAWING HAS BEEN PREPARED BASED ON INFORMATION FURNISHED BY OTHERS. WHILE THIS INFORMATION FURNISHED IS ASSUMED TO BE RELIABLE, THE DESIGN CONSULTANT CANNOT ASSURE ITS ACCURACY. THE DESIGN CONSULTANT WILL NOT BE RESPONSIBLE FOR ANY ERRORS OR OMISSIONS WHICH MAY HAVE BEEN INCORPORATED INTO THIS RECORD DRAWING AS A RESULT. THOSE RELYING ON THIS RECORD DRAWING MUST OBTAIN INDEPENDENT VERIFICATION OF ITS ACCURACY BEFORE APPLYING IT FOR ANY PURPOSE.



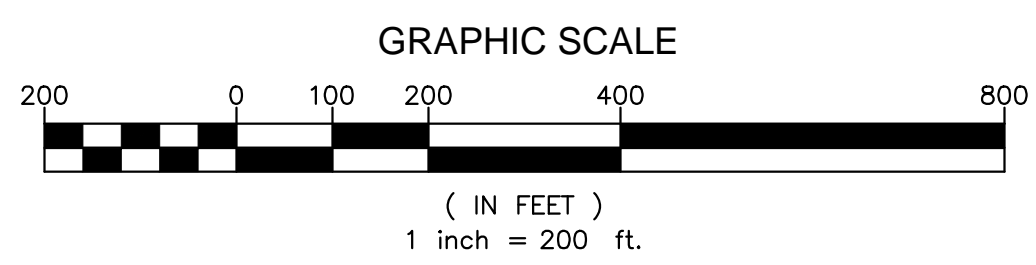
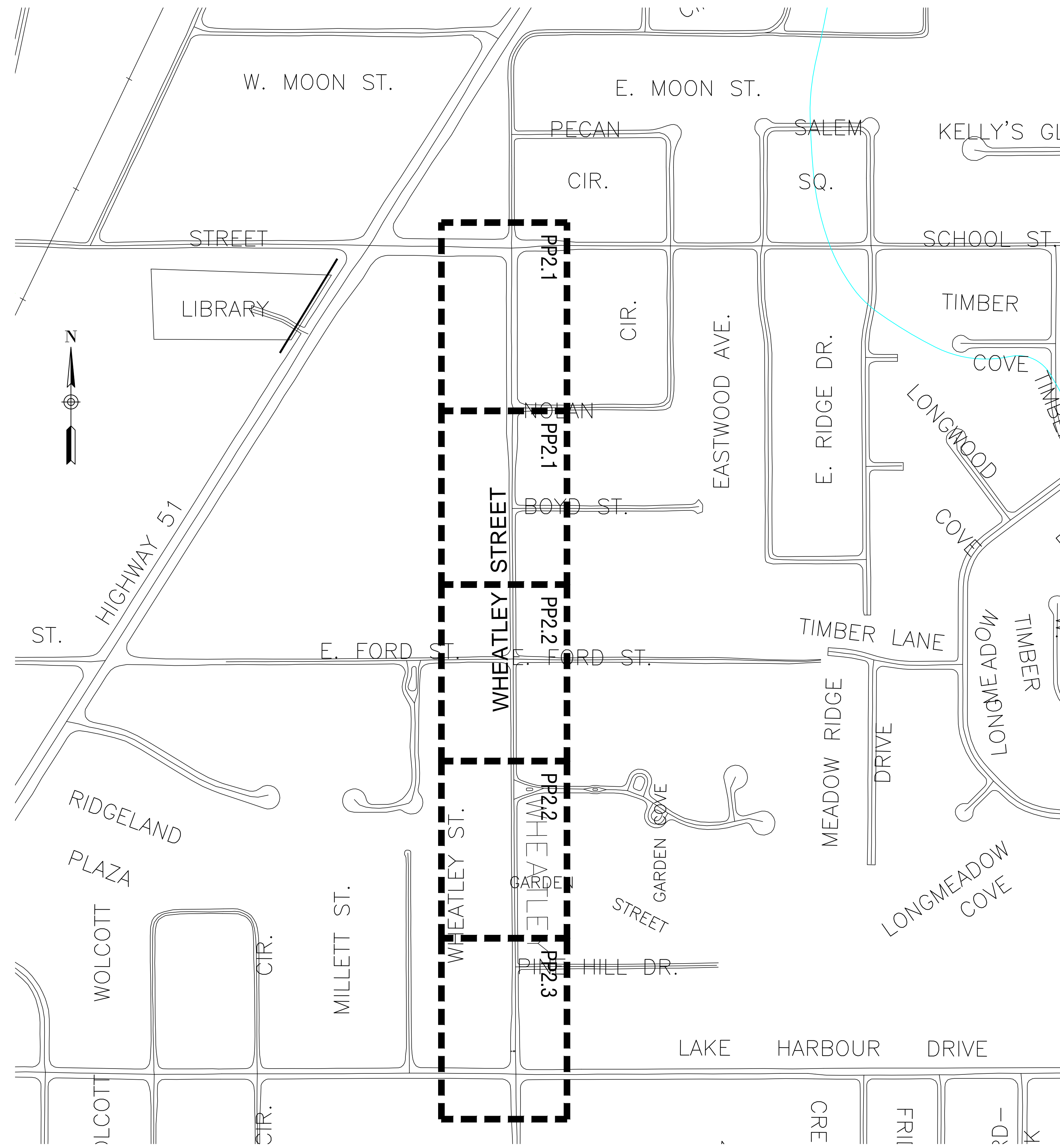
**SCHOOL STREET & WHEATLEY STREET  
 WATER LINE RELOCATION  
 CITY OF RIDGELAND, MISSISSIPPI  
 EPA GRANT # XP-95416710-0**

DRAWING REVISIONS		
NO.	REMARKS	DATE

SEAL	
DRAWN BY:	TFM
DESIGNED BY:	BGG
CHECKED BY:	CTK
DRAWING TITLE:	
SCALE:	AS SHOWN
DATE:	01/01/11
PROJECT:	W0400

**SCHOOL STREET VICINITY MAP & GENERAL NOTES**

SHEET NUMBER:  
**G1.1**



**RECORD DRAWING** - February 7, 2011  
 THIS RECORD DRAWING HAS BEEN PREPARED BASED ON INFORMATION FURNISHED BY OTHERS. WHILE THIS INFORMATION FURNISHED IS ASSUMED TO BE RELIABLE, THE DESIGN CONSULTANT CANNOT ASSURE ITS ACCURACY. THE DESIGN CONSULTANT WILL NOT BE RESPONSIBLE FOR ANY ERRORS OR OMISSIONS WHICH MAY HAVE BEEN INCORPORATED INTO THIS RECORD DRAWING AS A RESULT. THOSE RELYING ON THIS RECORD DRAWING MUST OBTAIN INDEPENDENT VERIFICATION OF ITS ACCURACY BEFORE APPLYING IT FOR ANY PURPOSE.

**SCHOOL STREET & WHEATLEY STREET  
 WATER LINE RELOCATION  
 CITY OF RIDGELAND, MISSISSIPPI  
 EPA GRANT # XP-95416710-0**

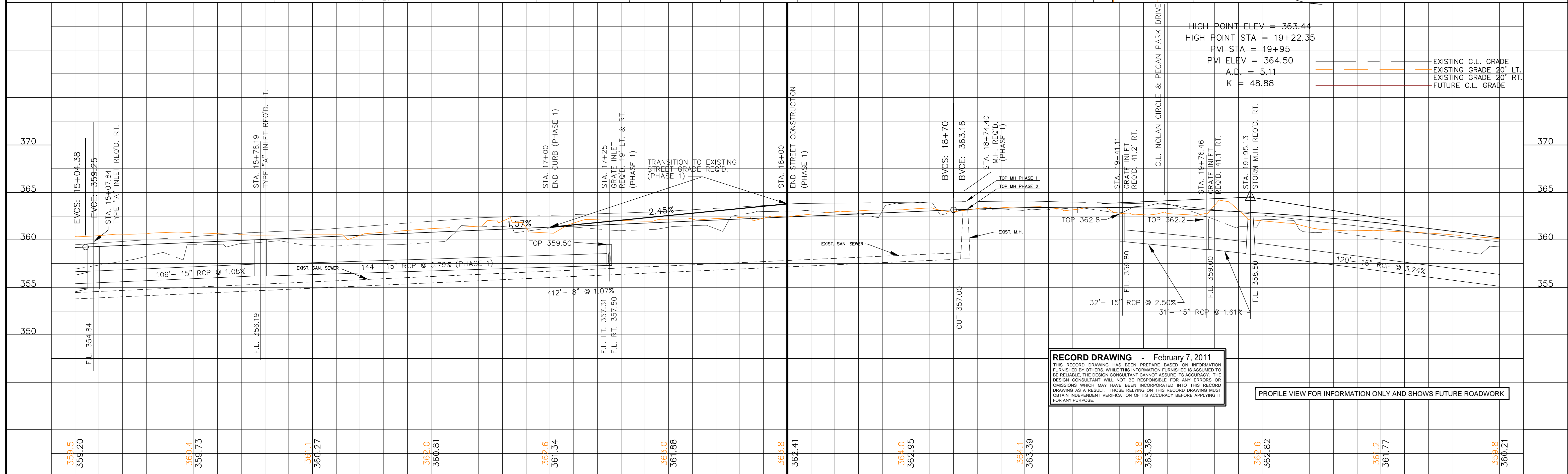
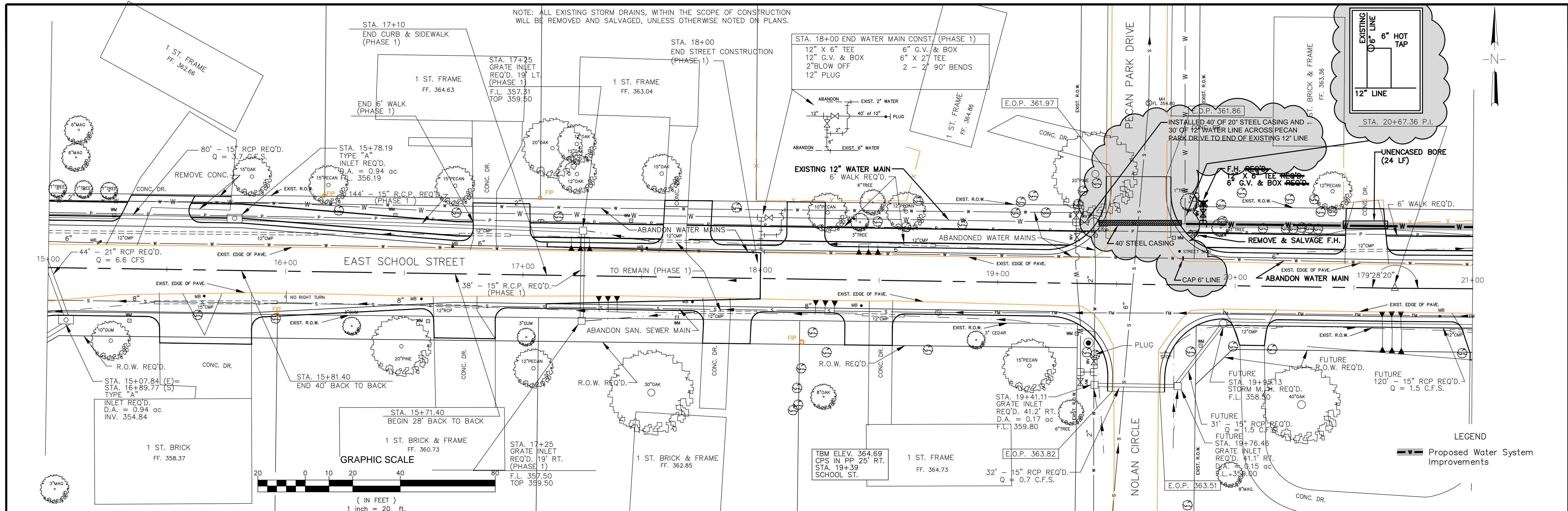
DRAWING REVISIONS		
NO.	REMARKS	DATE

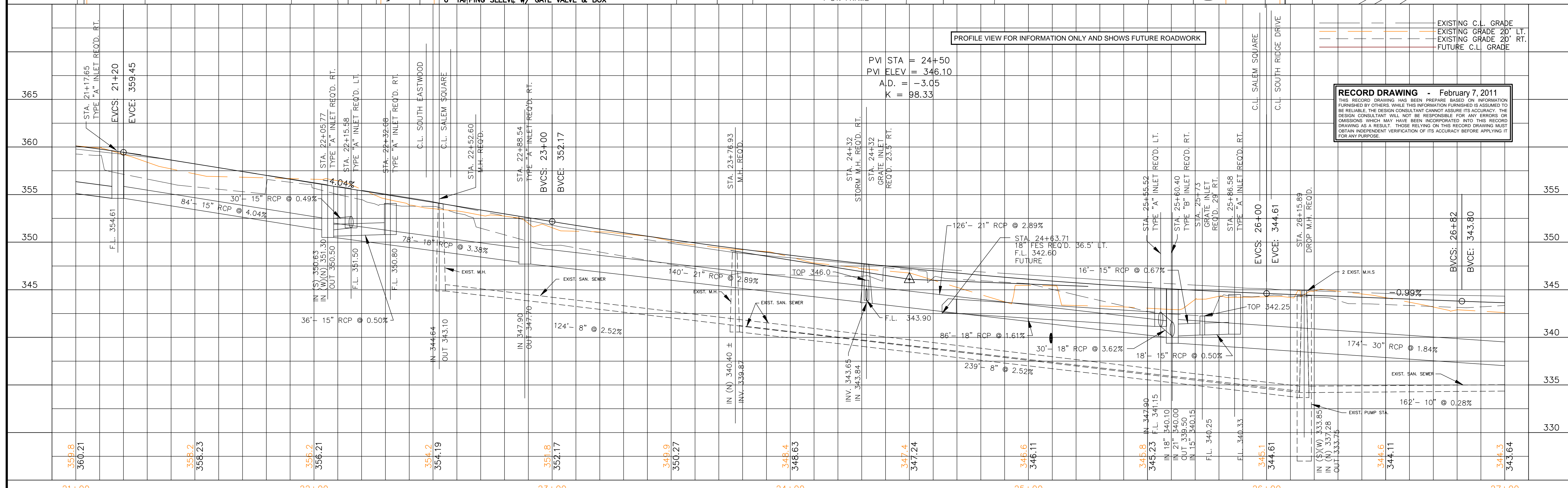
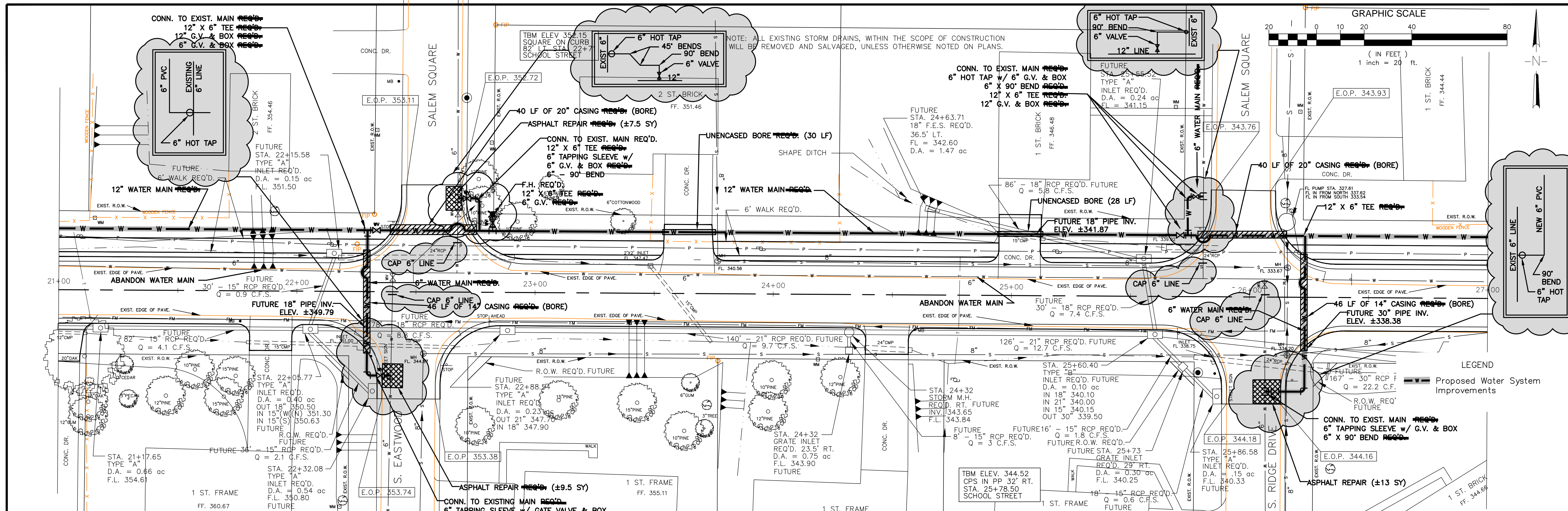
SEAL:

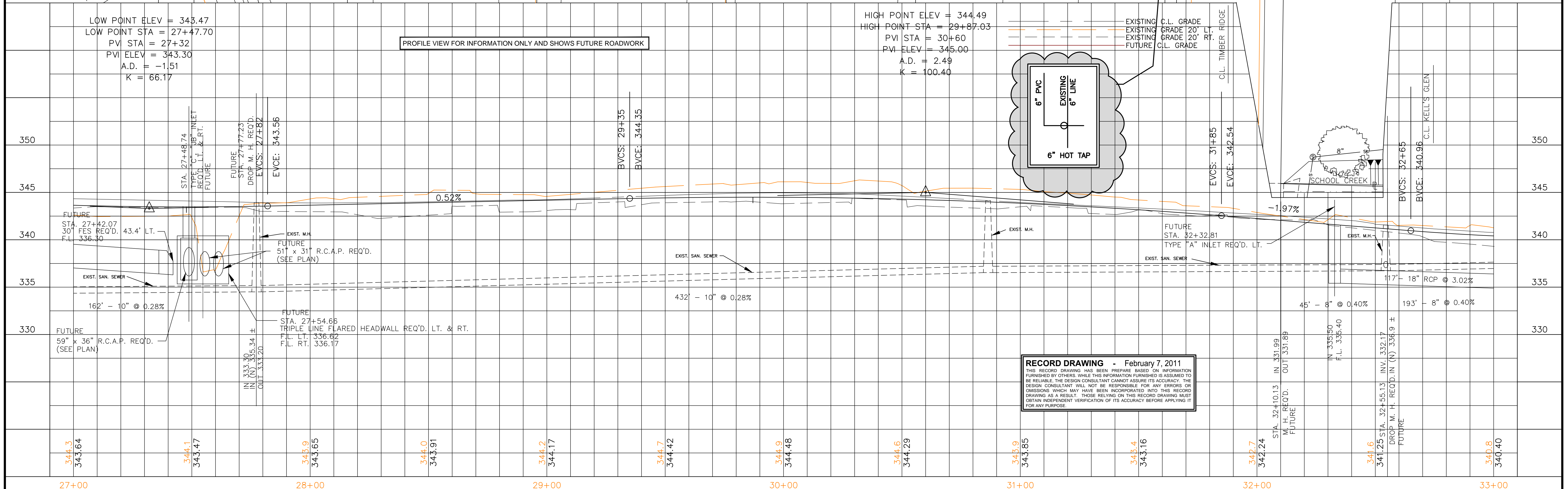
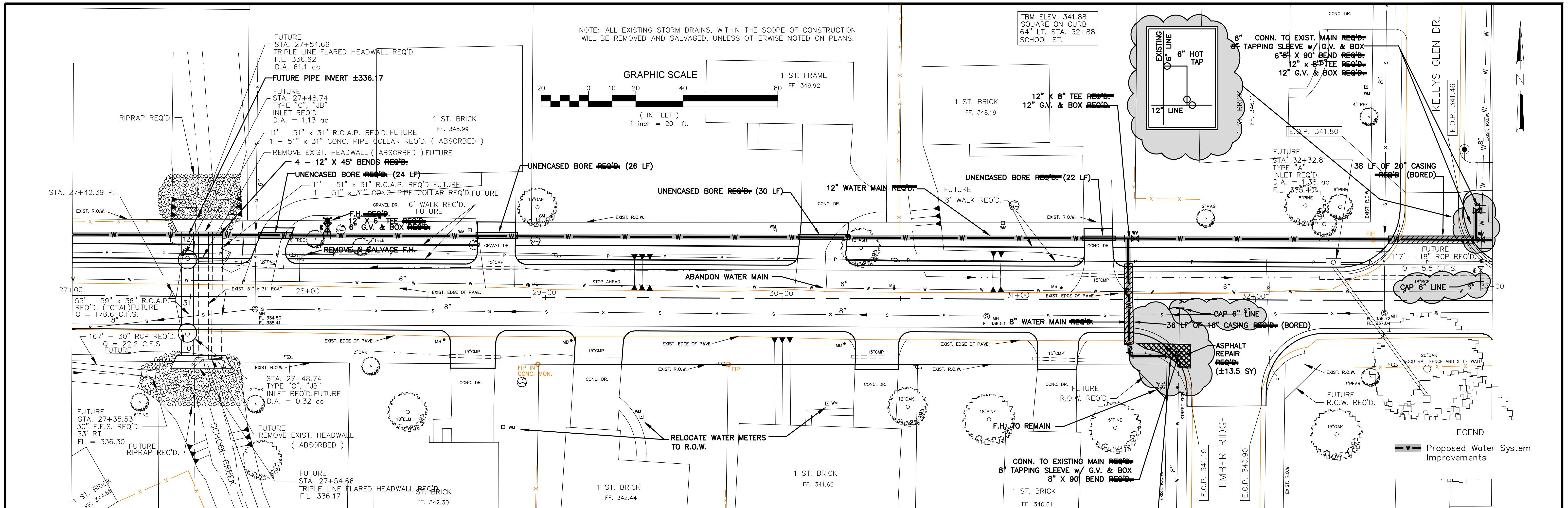
DRAWN BY:	TFM	SCALE:	AS SHOWN
DESIGNED BY:	BGG	DATE:	01/07/11
CHECKED BY:	CTK	PROJECT:	W04-003

DRAWING TITLE:  
**WHEATLEY STREET VICINITY MAP**

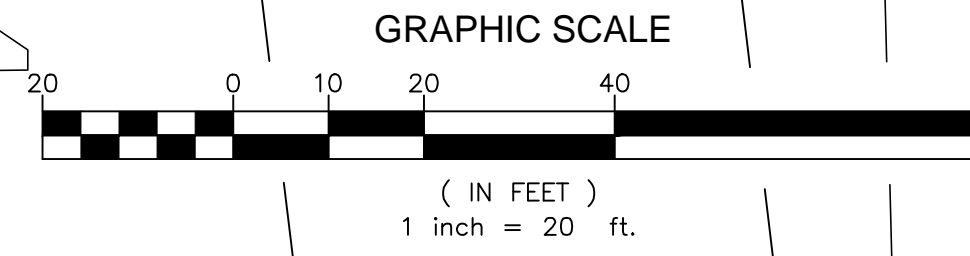
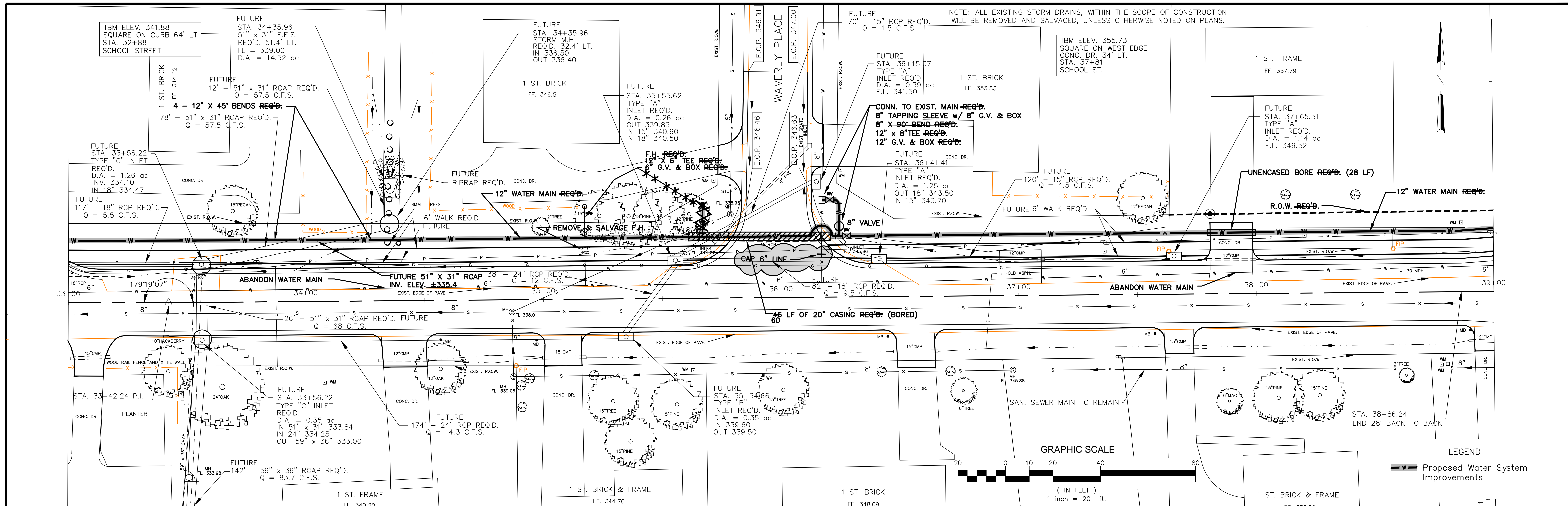
SHEET NUMBER:  
**G1.2**



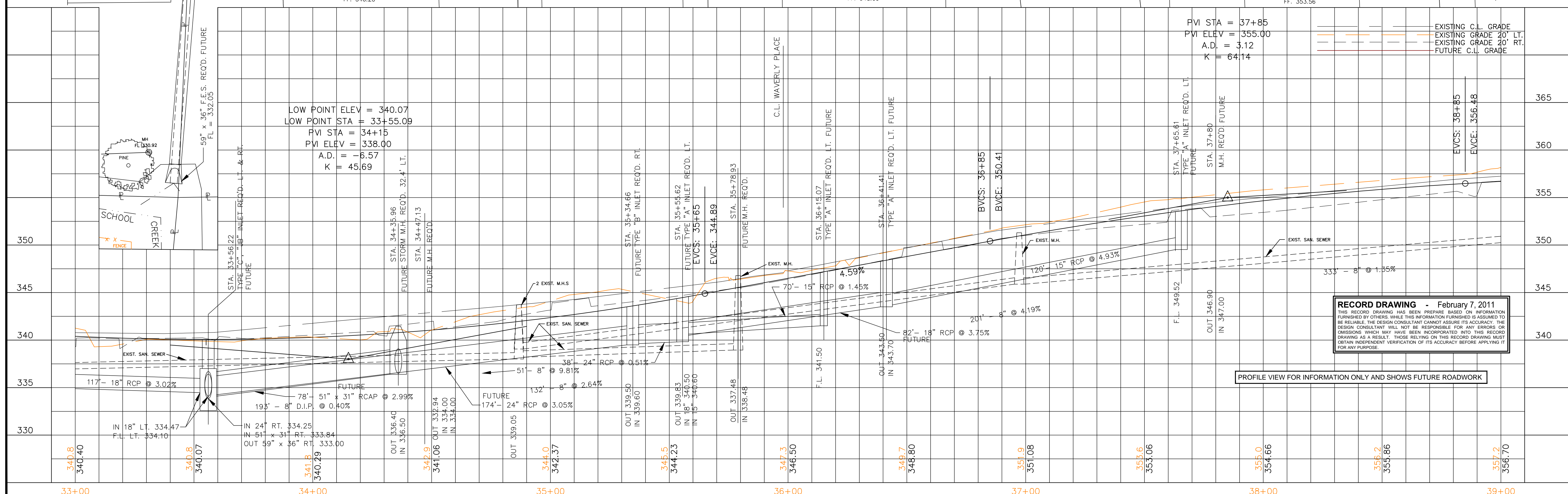




NO.	DATE	DESIGNED	DATE	CITY OF RIDGELAND, MISSISSIPPI		SCHOOL STREET & WHEATLEY STREET WATER LINE RELOCATION		SCHOOL STREET PLAN VIEW	
		DRAWN	01/2011	MADISON COUNTY		EPA GRANT # XP-95416710-0		W.E.I. JOB NO. W09083	
		BY	SCALE					SHEET NO. PP13	
			1" = 20' HORIZ.						
			1" = 5' VERT.						



LEGEND  
 Proposed Water System Improvements



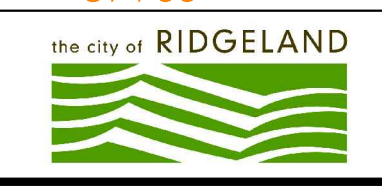
**RECORD DRAWING** - February 7, 2011  
 THIS RECORD DRAWING HAS BEEN PREPARED BASED ON INFORMATION FURNISHED BY OTHERS. WHILE THIS INFORMATION FURNISHED IS ASSUMED TO BE RELIABLE, THE DESIGN CONSULTANT CANNOT ASSURE ITS ACCURACY. THE DESIGN CONSULTANT WILL NOT BE RESPONSIBLE FOR ANY ERRORS OR OMISSIONS WHICH MAY HAVE BEEN INCORPORATED INTO THIS RECORD DRAWING AS A RESULT. THOSE RELYING ON THIS RECORD DRAWING MUST OBTAIN INDEPENDENT VERIFICATION OF ITS ACCURACY BEFORE APPLYING IT FOR ANY PURPOSE.

PROFILE VIEW FOR INFORMATION ONLY AND SHOWS FUTURE ROADWORK

NO.	DATE	REVISIONS	DESIGNED	DATE	BY	DRAWN	RC/MM/BG	1" = 40' HORIZ. 1" = 5' VERT.
				01/2011				

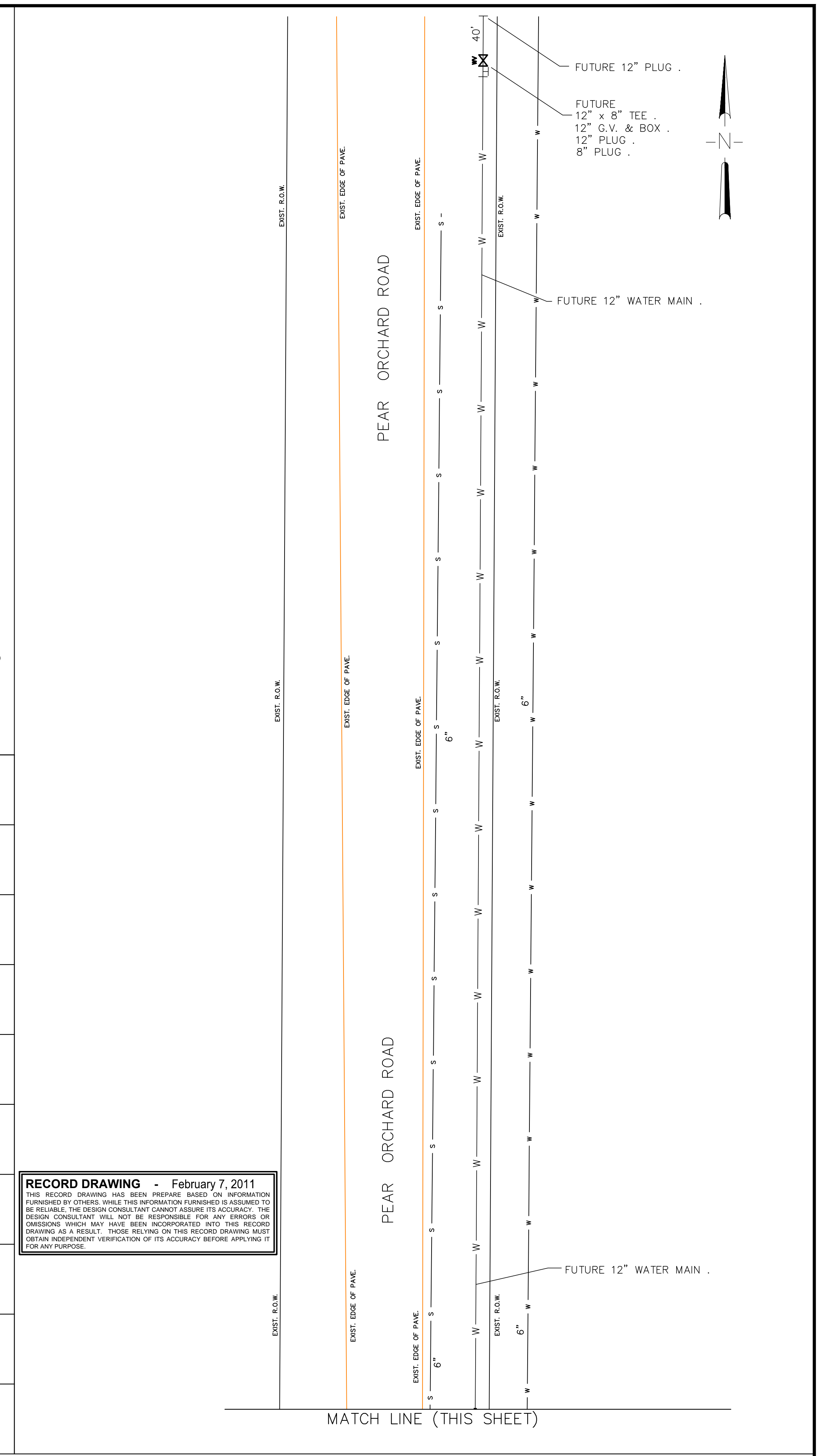
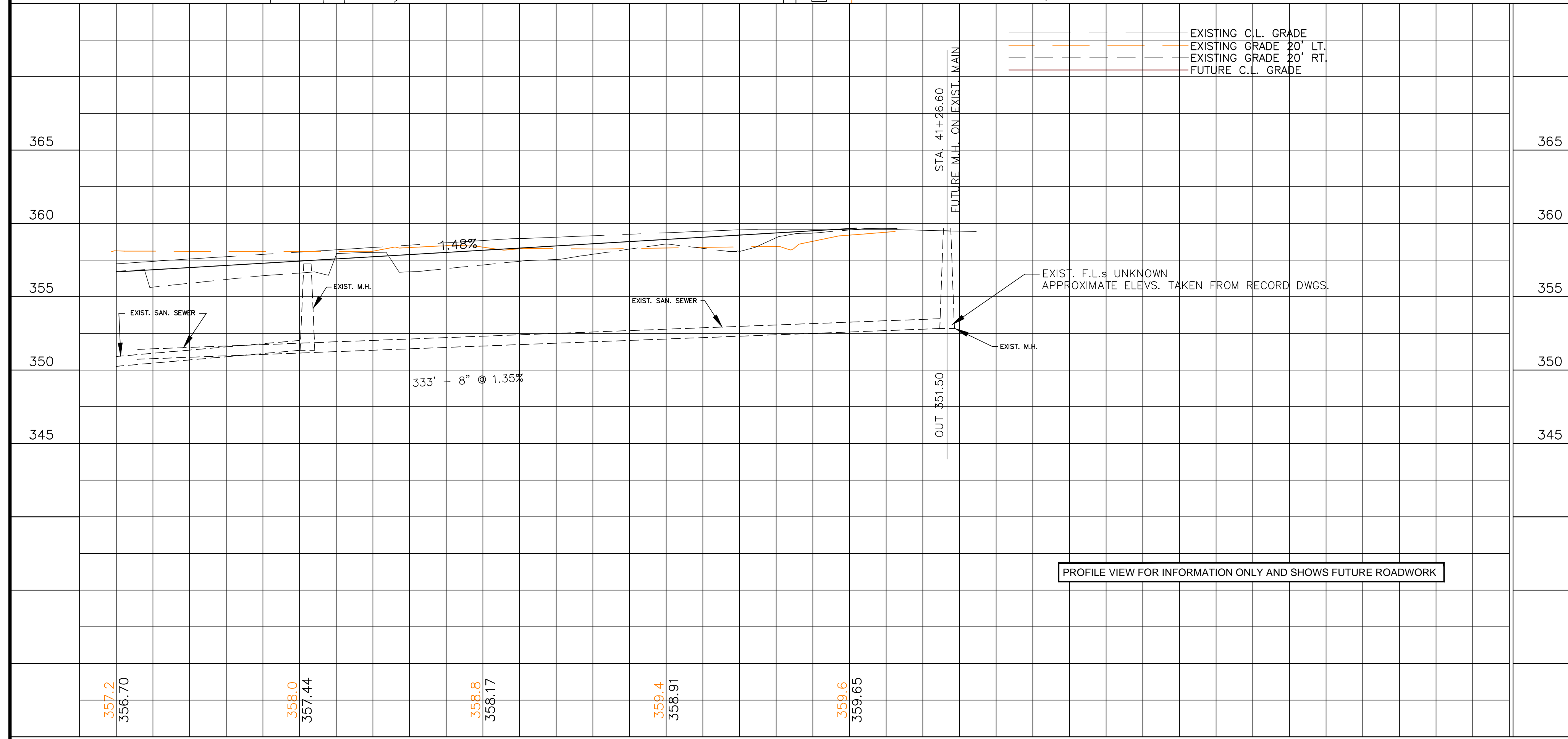
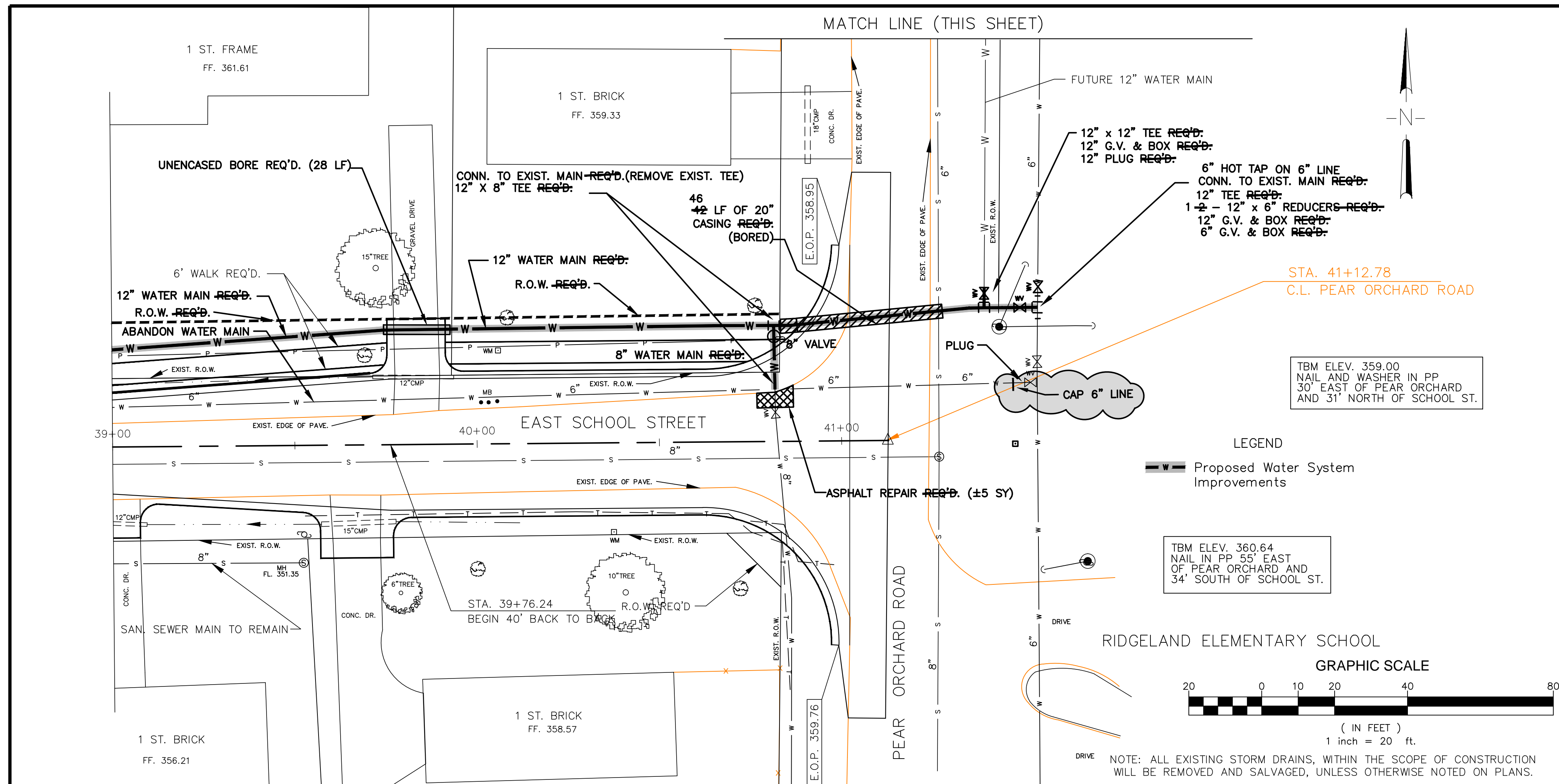


CITY OF RIDGELAND, MISSISSIPPI  
 MADISON COUNTY



SCHOOL STREET & WHEATLEY STREET WATER LINE RELOCATION  
 EPA GRANT # XP-95416710-0

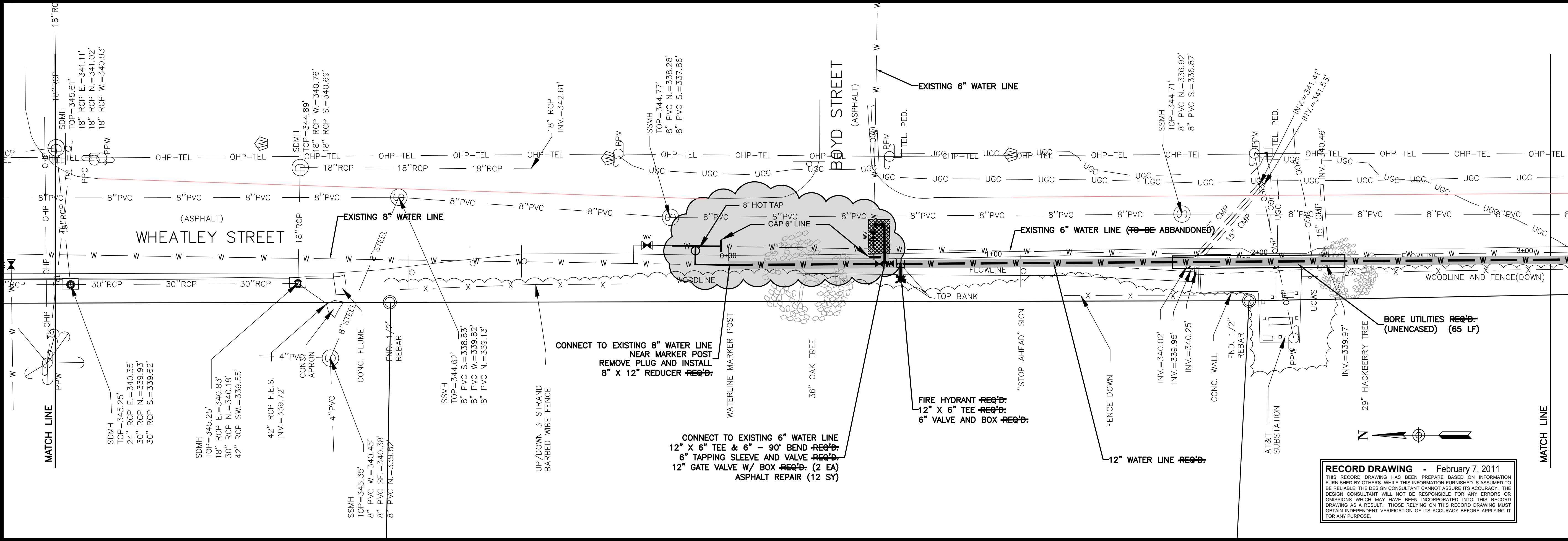
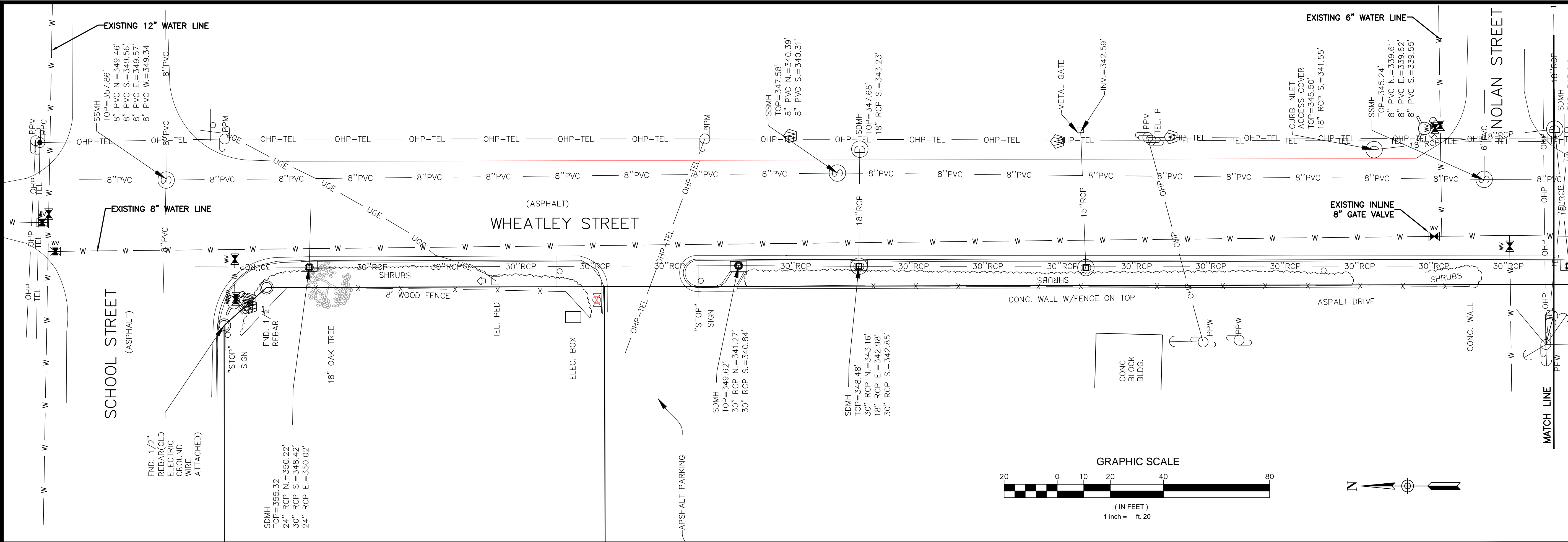
SCHOOL STREET PLAN VIEW  
 W.E.I. JOB NO. W09083  
 SHEET NO. PP1.4



**RECORD DRAWING - February 7, 2011**  
 THIS RECORD DRAWING HAS BEEN PREPARED BASED ON INFORMATION FURNISHED BY OTHERS. WHILE THIS INFORMATION FURNISHED IS ASSUMED TO BE RELIABLE, THE DESIGN CONSULTANT CANNOT ASSURE ITS ACCURACY. THE DESIGN CONSULTANT WILL NOT BE RESPONSIBLE FOR ANY ERRORS OR OMISSIONS WHICH MAY HAVE BEEN INCORPORATED INTO THIS RECORD DRAWING AS A RESULT. THOSE RELYING ON THIS RECORD DRAWING MUST OBTAIN INDEPENDENT VERIFICATION OF ITS ACCURACY BEFORE APPLYING IT FOR ANY PURPOSE.



**SCHOOL STREET & WHEATLEY STREET  
 WATER LINE RELOCATION  
 CITY OF RIDGELAND, MS  
 EPA GRANT # XP-95416710-0**

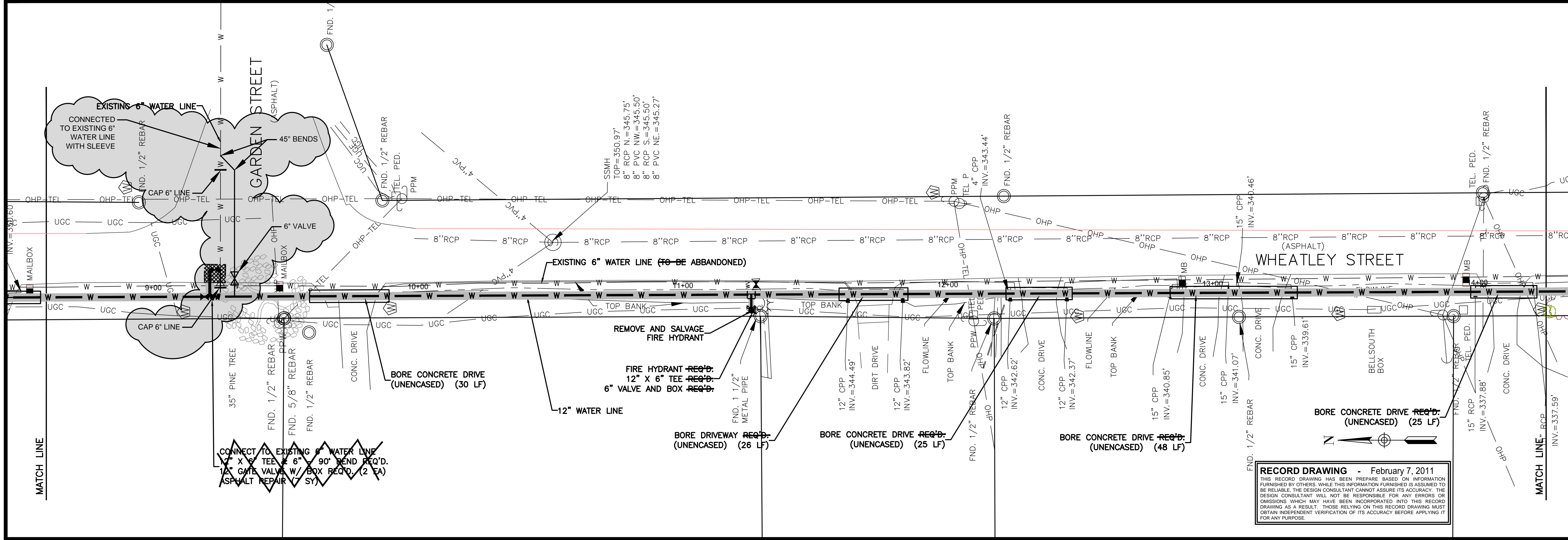
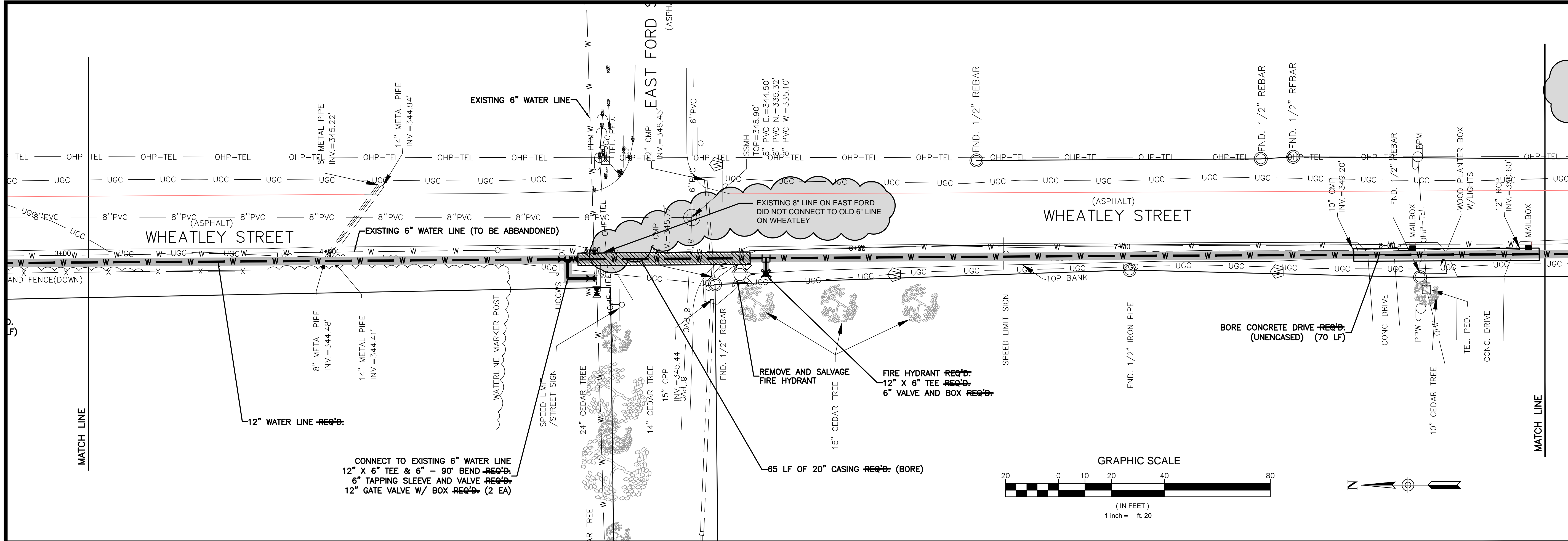


DRAWING REVISIONS		
NO.	REMARKS	DATE

DESIGNED BY: BOG	SCALE: AS SHOWN
CHECKED BY: CTK	DATE: 01/01/11
DRAWING TITLE:	PROJECT: W04-003

**WHEATLEY STREET PLAN VIEW**  
 SHEET NUMBER  
**PP2.1**

**SCHOOL STREET & WHEATLEY STREET  
 WATER LINE RELOCATION  
 CITY OF RIDGELAND, MS  
 EPA GRANT # XP-95416710-0**



DRAWING REVISIONS		
NO.	REMARKS	DATE

DESIGNED BY: BOG	SCALE: AS SHOWN
CHECKED BY: CTK	DATE: 010111
DRAWING TITLE:	PROJECT: W06-003

**WHEATLEY STREET PLAN VIEW**  
 SHEET NUMBER: PP2.2





