

MATERIAL REQUIREMENTS

STREETS

1. CONCRETE FOR CURB AND GUTTER SHALL BE 3,000 PSI MINIMUM.
2. HOT BITUMINOUS PAVEMENT BASE COURSE MIXTURES AND MATERIALS SHALL MEET SPECIFICATION BB-1 OF THE MISSISSIPPI STANDARD SPECIFICATIONS FOR ROAD AND BRIDGE CONSTRUCTION, LATEST EDITION.
3. HOT BITUMINOUS PAVEMENT SURFACE COURSE MIXTURES AND MATERIALS SHALL MEET SPECIFICATION SC-1 OF THE MISSISSIPPI STANDARD SPECIFICATIONS FOR ROAD AND BRIDGE CONSTRUCTION, LATEST EDITION.

STORM DRAINAGE

1. PIPE - REINFORCED CONCRETE PIPE, ROUND ASTM C-76 OR ARCH. ASTM C-506.
2. JOINTS - O-RING RUBBER GASKETS, BITUMINOUS PLASTIC CEMENT OR PRE FORMED JOINT COMPOUND.
3. INLETS AND JUNCTION BOXES - PRE CAST CONCRETE, ASTM C-478 OR CONCRETE CAST-IN-PLACE. (CITY OF RIDGELAND STANDARD)
4. INLET CASTINGS - VULCAN RCB-7 OR EQUAL AS APPROVED BY ENGINEER.

WATER

- MAIN - C900 CLASS 150 PVC
- JOINTS - TYLON JOINTS WITH RUBBER GASKET ANSI/AWWA STANDARDS.
- FITTINGS - DUCTILE IRON COMPACT FITTINGS MECHANICAL JOINT - ANSI/AWWA C153/A21.53-88
- VALVES - DUCTILE IRON METROSEAL 250 RESILIENT SEATED GATE VALVES - AWWA C509.
- VALVE BOXES - CAST IRON, 3 PIECE ADJUSTABLE STAMPED W/ "WATER".
- SERVICE LINE - 3/4" MINIMUM TYPE K COPPER, ASTM B88, POLYETHYLENE (PE), AWWA C901, OR POLYBUTYLENE (PB), AWWA C902.
- SVC SADDLE - FORD STYLE 304, OR APPROVED EQUAL.
- CORP STOPS - MUELLER NO. H-15000 OR APPROVED EQUAL.
- CURB STOPS - MUELLER H-15170 OR APPROVED EQUAL.
- METER BOX - CAST IRON METER BOX W/ FLIP TOP READING COVER.

SEWER

- MAIN & SERVICE - PVC 108-126 ASTM C905 OR DUCTILE IRON, PROTECTED AND TERAPHEN EPOXY LINED.
- JOINTS - CLIP ON W/ LOCKED-IN RUBBER GASKET ASTM F-477
- MANHOLES - PRE CAST CONCRETE, ASTM C-478, JOAL TAR EPOXY LINING, PROTECTED TO INTERIOR AND EXTERIOR OF MANHOLE, INLETS AND ON MANHOLE STEPS.
- PIPE BOOSTS - PDR-N-THEAL WOLDED RUBBER CONNECTIONS OR EQUAL.
- FRAME & COVER - CAST IRON, ASTM A-76 OR EQUAL.

GENERAL NOTES

STREET

1. STREET SUB GRADE AREAS WHERE EXPANSIVE CLAYS (CH) ARE ENCOUNTERED WITHIN 4" OF FINISHED GRADE SHALL BE UNDERCUT AND BACK FILLED AS REQUIRED TO SEPARATE PAVEMENT FROM EXPANSIVE CLAYS BY A MINIMUM 3 FOOT THICK LAYER OF SELECT SILTY CLAYS (CL) OR SANDY CLAYS (CL) HAVING A LIQUID LIMIT OF LESS THAN 40 AND A PI WITHIN THE RANGE OF 8 TO 20. THE BACK FILL AND FILL MATERIALS SHOULD BE SPREAD IN LOOSE LIFTS HAVING A MAXIMUM THICKNESS OF 9 IN. AND COMPACTED TO NOT LESS THAN 95 PERCENT OF STANDARD PROCTOR MAXIMUM DRY DENSITY (ASTM D 698) AT MOISTURE CONTENTS WITHIN 3 PERCENTAGE POINTS OF THE OPTIMUM MOISTURE CONTENT. STABILITY MUST BE EVIDENT DURING COMPACTION OF EACH LIFT BEFORE ANY SUBSEQUENT LIFTS OF FILL OR BACK FILL MATERIAL ARE ADDED.
2. UNDERCUTTING, BACK FILLING, LIME TREATMENT AND MECHANICAL TRENCH COMPACTION SHALL EXTEND A MIN. OF 2 FEET BEYOND BACK OF CURB.
3. PRIOR TO PLACING ASPHALT BASE MATERIAL, PAVING CONTRACTOR SHALL 1) FINE-GRADE THE SUB GRADE MATERIAL TO THE PROPER SECTION TO PERMIT PLACEMENT OF THE REQUIRED THICKNESS OF BASE COURSE; 2) COMPACT AND PROOF-ROLL SUB GRADE TO ACHIEVE STABILITY; AND ENSURE REQUIRED SUB GRADE DENSITY HAS BEEN ACHIEVED AND VERIFIED BY SOILS TESTING LABORATORY.

CURB AND GUTTER

1. CURB AND GUTTER SHALL BE 24" STANDARD (SEE DETAIL)
2. SUB GRADE BENEATH CURB AND GUTTER SHALL BE FINE GRADED AND COMPACTED TO ACHIEVE STABILITY UNDER PRESSURE OF THE REAR WHEEL LOADING OF A MOTOR GRADER MOVING SLOWLY OVER THE CURB AND GUTTER SUB GRADE.
3. INTERSECTION CURB RADII SHALL BE 20' MEASURED TO BACK OF CURB UNLESS OTHERWISE SHOWN.
4. AFTER FORMS AND/OR CURB AND GUTTER STRING LINES HAVE BEEN SET AND BEFORE CONCRETE IS POURED, CONTRACTOR SHALL VERIFY THAT ALL GUTTERS DRAIN TO INLETS.
5. EXPANSION JOINTS IN CURB AND GUTTER SHALL BE 3/4" JOINT MATERIAL PLACED AT 30' (MAXIMUM) INTERVALS.
6. CONTRACTION JOINTS IN CURB AND GUTTER SHALL BE SCOPED AT INTERVALS NOT GREATER THAN 10 FEET AND SPACED EQUALLY BETWEEN EXPANSION JOINTS.
7. CONCRETE FOR CURB AND GUTTER SHALL BE 3,000 PSI MINIMUM.
8. 48" SIDEWALKS SHALL BE CONSTRUCTED BY THE BUILDER 30 FEET AFTER ALL UTILITY SERVICES ARE INSTALLED AND THE SITE HAS BEEN SLOPED AND SHAPED TO ITS FINISHED TOPOGRAPHY. NOT A PART OF THIS PROJECT.

STORM DRAINAGE & EROSION CONTROL

1. ALL STORM DRAINAGE PIPE AND INLETS SHALL BE REINFORCED AND CLEARED OF ALL CONSTRUCTION MATERIALS AND/OR DEBRIS PRIOR TO PROJECT COMPLETION.
2. THE CONSTRUCTION SITE SHALL BE MAINTAINED TO MINIMIZE EROSION AND SEDIMENT OFF-SITE OF SEDIMENT. ALL MATERIALS SPILLED, DROPPED, WASHED OR TRACKED FROM VEHICLES OR SITE ONTO PUBLIC ROADWAYS MUST BE REMOVED IMMEDIATELY.
3. CURB AND AREA INLET SEDIMENT TRAPS SHALL CONSIST OF HAY BALS FULL SURROUNDING EACH INLET.
4. SEDIMENT BARRIERS SHALL BE HAY BALS OR EROSION CONTROL TENSING PLATED IN ALL DRAINAGE WAYS TO PREVENT SEDIMENT FROM LEAVING THE CONSTRUCTION SITE.

WATER & SEWER

1. ALL WATER AND SANITARY SEWER CONSTRUCTION TO BE IN ACCORDANCE WITH THE CITY OF RIDGELAND STANDARD SPECIFICATIONS.
2. WHERE A SANITARY SEWER MAIN OR SERVICE LINE CROSSES ABOVE A WATER MAIN OR WITHIN 18 INCHES BELOW A WATER MAIN OR WITHIN 10 FEET ON EITHER SIDE OF A WATER MAIN THE SEWER MAIN OR SERVICE LINE SHALL BE CONSTRUCTED OF DUCTILE IRON.
3. SEWER SERVICE LINES SHALL BE 6", SEWER MAINS SHALL BE 8" 50#-26 PVC.
4. WATER SERVICE LINES SHALL BE 3/4" OR AS OTHERWISE SHOWN FOR A PARTICULAR LOT; WATER MAINS SHALL BE 8" 50#-26 PVC.
5. SERVICES FOR WATER AND SEWER SHALL BE LOCATED NEAR THE CENTER OF ALL LOTS WITH 10 FOOT SEPARATION. THE TERMINUS OF EACH SERVICE SHALL BE MARKED WITH A STEEL TEE POST WITH BLUE TIP FOR WATER AND RED TIP FOR SEWER.
6. BACK FILL OF ALL TRENCHES UNDER EXISTING OR PROPOSED PAVEMENTS AND CURB AND GUTTER SHALL BE MECHANICALLY COMPACTED IN 9" MAXIMUM LOOSE LIFTS TO A MINIMUM OF 95% STANDARD PROCTOR PEAK DRY DENSITY.
7. DEFLECTION TEST SHALL BE PERFORMED ON ALL FLEXIBLE SEWER PIPE. THE TEST SHALL BE CONDUCTED AFTER THE FINAL BACK FILL HAS BEEN IN PLACE AT LEAST 30 DAYS. DEFLECTION TEST SHALL BE RUN USING A RIGID BALL OR MANDREL HAVING A DIAMETER EQUAL TO 95% OF THE INSIDE DIAMETER OF THE PIPE. THE TEST SHALL BE PERFORMED WITHOUT MECHANICAL PULLING DEVICES.
8. WATER MAINS SHALL BE INSTALLED WITH 4' MINIMUM COVER UNDER ROADWAY SECTIONS AND 3' MINIMUM COVER ELSEWHERE.
9. CONTRACTOR SHALL MAINTAIN RECORDS DURING CONSTRUCTION OF HORIZONTAL AND VERTICAL LOCATION OF ALL WATER AND SEWER SERVICES FOR AS BUILT RECORDS.

INDEX TO DRAWINGS

- 1 COVER SHEET
- 2 GENERAL NOTES AND INDEX TO DRAWINGS
- 3 STREETS & LOT LAYOUT
- 4 WATER & SEWER LAYOUT
- 5 STORM DRAINAGE LAYOUT
- 6 PLAN AND PROFILE - PINWOOD LANE STA. 0+00 - STA. 14+50
- 7 PLAN AND PROFILE - PINWOOD LANE STA. 14+50 - STA. 29+00.07
- 8 PLAN AND PROFILE - COVE STA. 0+00 - STA. 1+04.14
- 9 PLAN AND PROFILE - MAPLEWOOD PLACE STA. 0+00 - STA. 5+65.32
- 10 PLAN AND PROFILE - REDBUD PLACE STA. 0+00 - STA. 5+55.99
- 11 PLAN AND PROFILE - 4' FLAT BOTTOM DITCH STA. 0+50 - STA. 23+50
- 12 STANDARD MISCELLANEOUS DETAILS
- 13 STANDARD SEWER DETAILS

LEGEND

- PROPERTY LINE
- LOT LINE
- RIGHT OF WAY LINE
- EASEMENT
- SETBACK LINE
- CENTER LINE
- EDGE OF PAVEMENT
- BACK OF CURB
- EXISTING CONTOUR
- PROPOSED SANITARY SEWER & MANHOLE
- PROPOSED STORM SEWER & CATCH BASIN
- SANITARY SEWER
- WATER LINE
- PROPOSED WATER VALVE
- PROPOSED FIRE HYDRANT
- PROPOSED TEE



SHADOWOOD PARTS 3B, 3C & 3D
 A DEVELOPMENT OF
 SHADOWOOD PARTNERS

**GENERAL NOTES
 AND INDEX TO DRAWINGS**

**CITY OF RIDGELAND
 MADISON COUNTY, MISSISSIPPI**

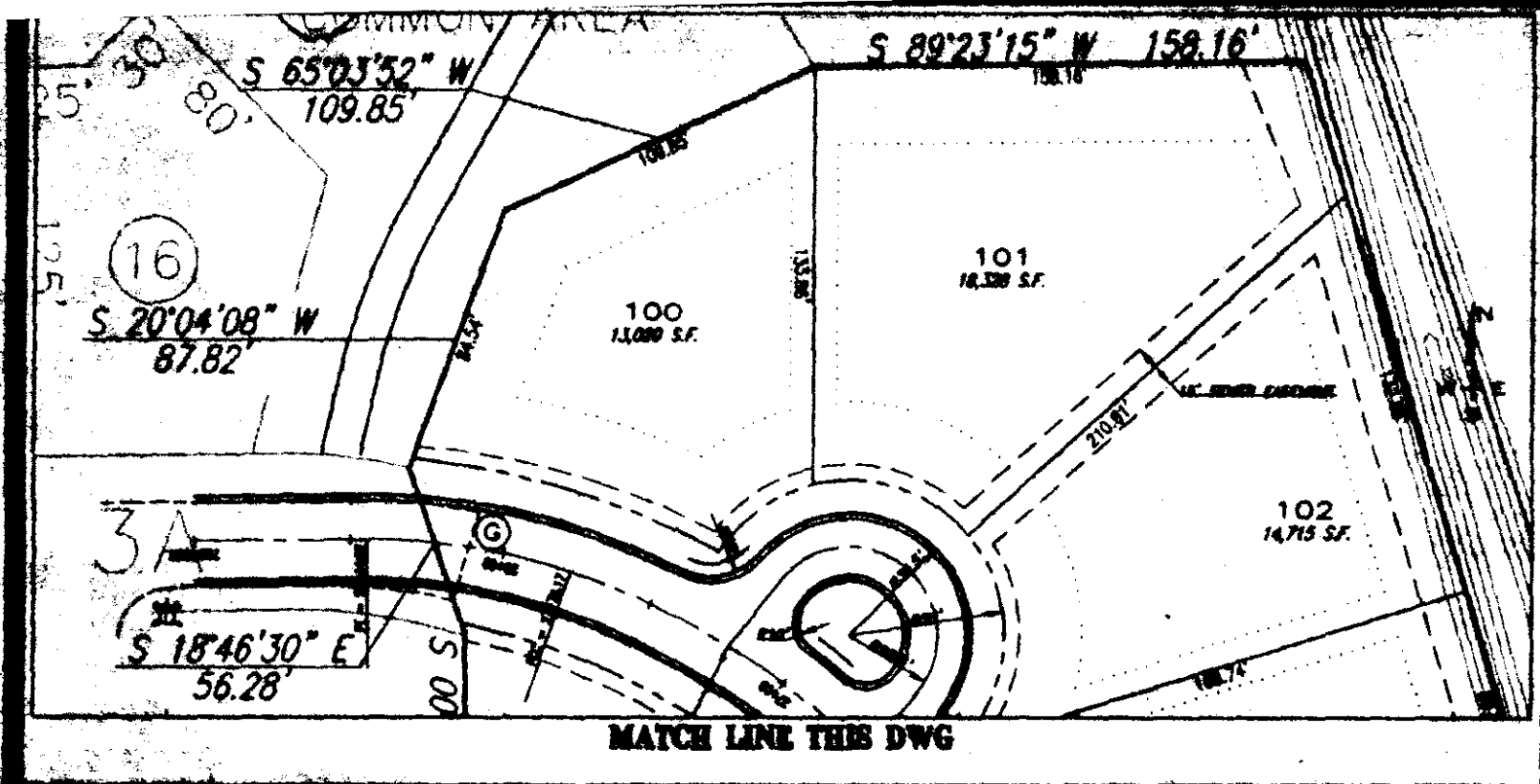
DESIGN	RCV	DATE	07/15/97
DRAWN	RDB	DATE	07/15/97
CHECK	RCV	DATE	07/17/97
SCALE	AS SHOWN		

STERLING
 Consultant

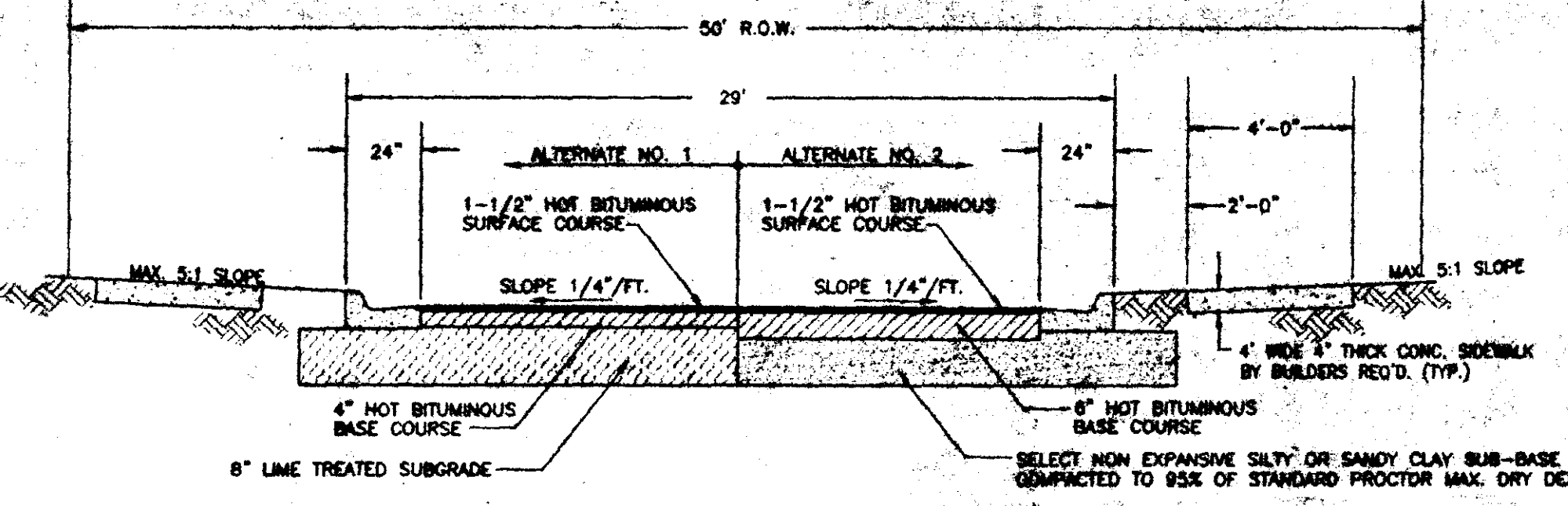
C:\WORK\SHADOWOOD\SHAD-005.Plot July 19 10:26:35 1997 R. David Bates - Plotting Consultant, Inc.

AS-BUILT DRAWINGS	REVISION	BY	DATE
			07/15/97

RECORD DRAWING
 THESE DRAWINGS SHOW AS-BUILT
 LOCATIONS OF WATER AND SEWER
 SYSTEMS ONLY.
 BY: R. W. WEAVER DATE: 7/20/11

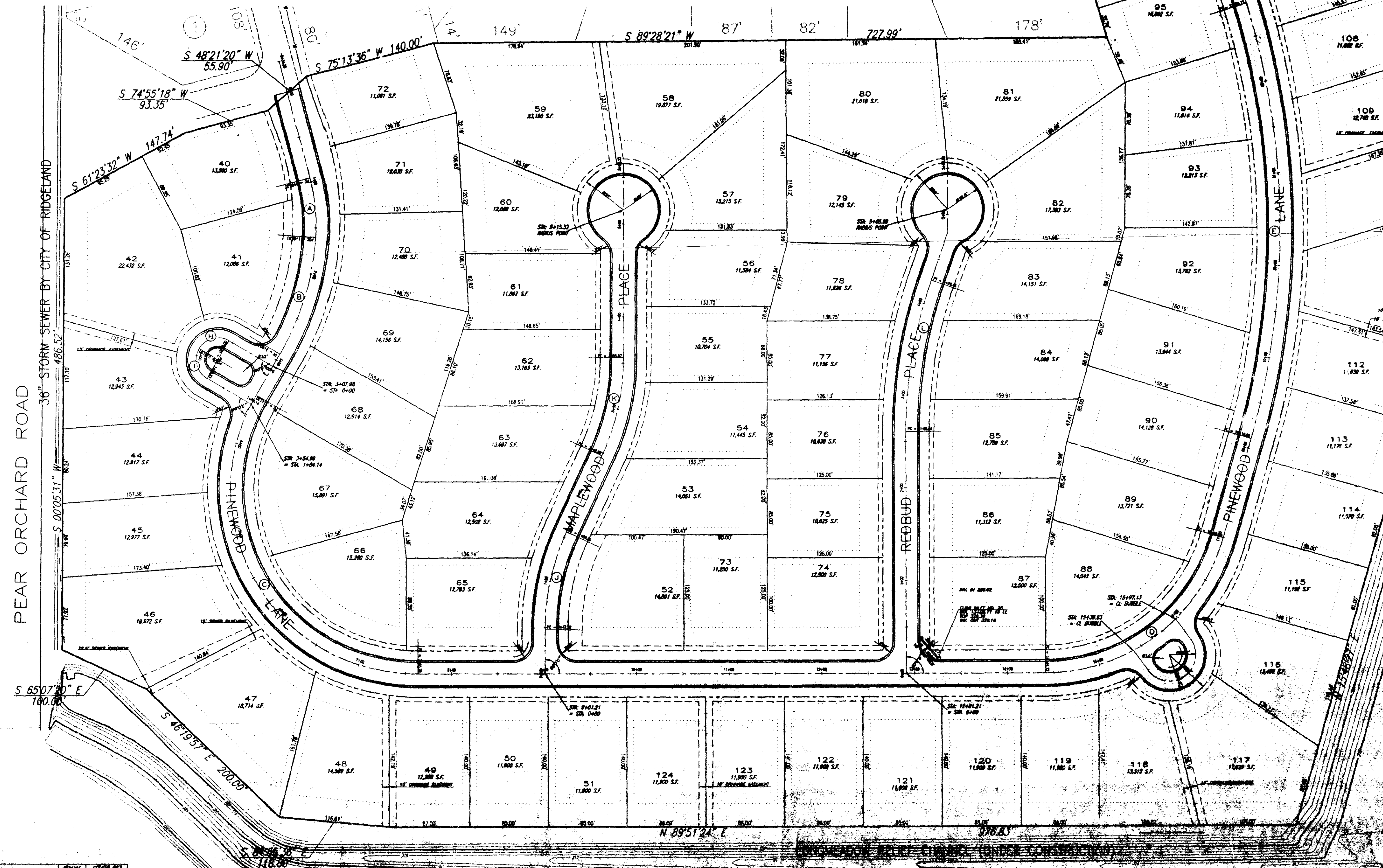


INSET 'A'

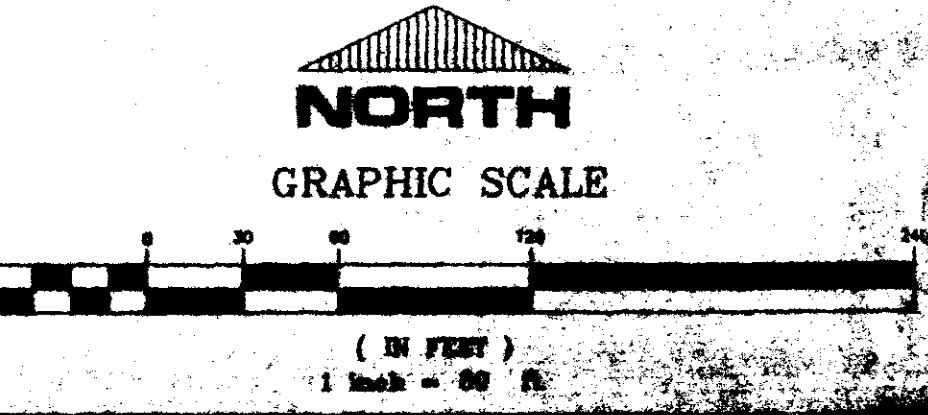


TYPICAL STREET SECTION
 NOT TO SCALE

CURVE	BEARING	LENGTH	CHORD	CHORD BEARING	PI
A	S 89°28'21\"/>				



SCHOOL CREEK STORMWATER
 DETENTION POND
 (UNDER CONSTRUCTION)



SHADOWOOD PARTS 3B, 3C & 3D
 A DEVELOPMENT OF
 SHADOWOOD PARTNERS

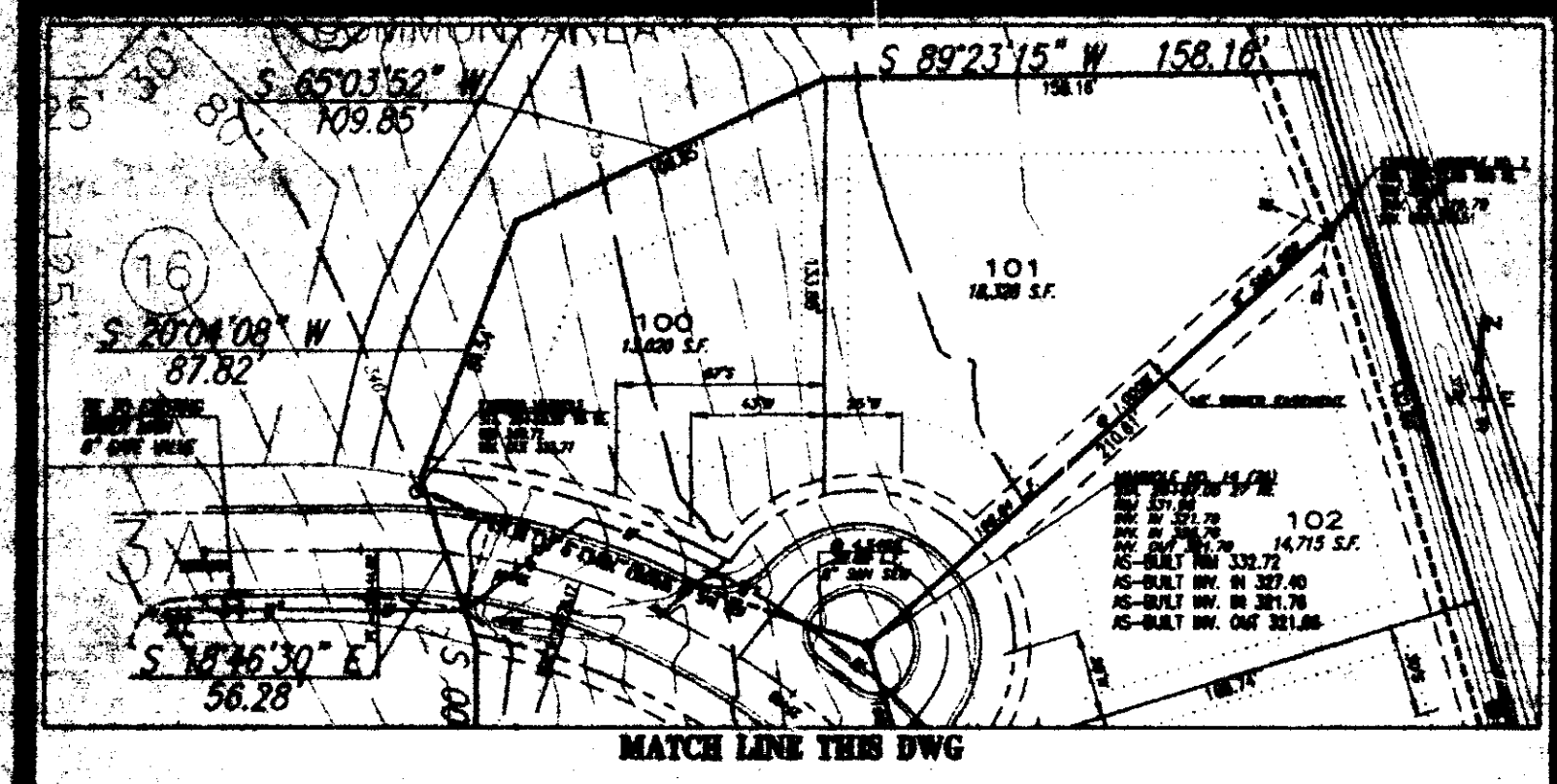
**STREET & LOT
 LAYOUT**

**CITY OF RIDGELAND
 MADISON COUNTY, MISSISSIPPI**

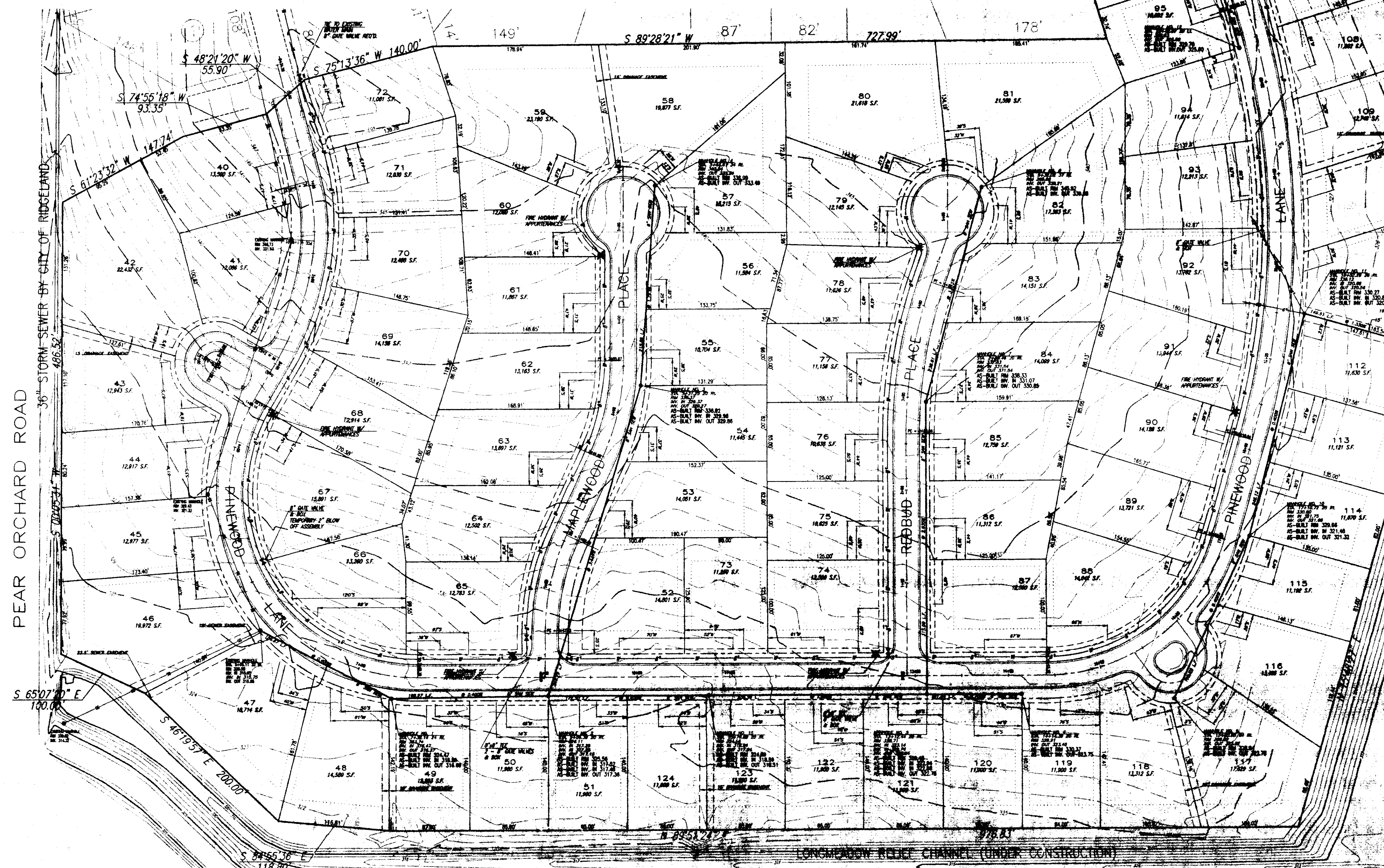
PREP BY: R. WEAVER
 CHECKED BY: R. WEAVER
 DATE: 7/20/11
STERLING CONSULTANTS

11/11/11 10:20 AM R:\Projects\111111\111111.dwg R. David Bates - Sterling Consultants, Inc.

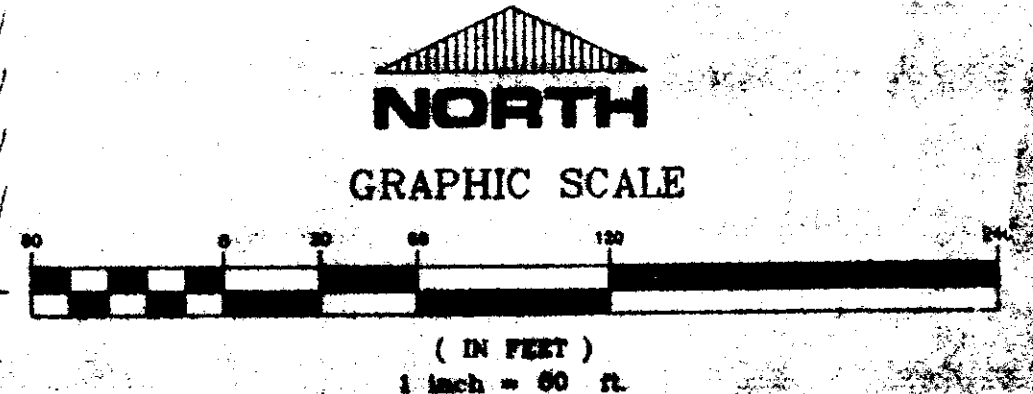
RECORD DRAWING
 THESE DRAWINGS SHOW AS BUILT
 LOCATIONS OF WATER AND SEWER
 SYSTEMS ONLY.
 BY: *R. Kern* DATE: *8/1/21*



INSET 'A'



SCHOOL CREEK STORMWATER
 DETENTION POND
 (UNDER CONSTRUCTION)



SHADOWOOD PARTS 3B, 3C & 3D
 A DEVELOPMENT OF
 SHADOWOOD PARTNERS

**WATER & SEWER
 LAYOUT**

CITY OF RIDGELAND
 MADISON COUNTY, MISSISSIPPI

DESIGN E.C.V.	DATE 8/24/20	SCALE 1/4" = 1'
DESIGN G.D.D.	DATE 1/24/21	SCALE 1/4" = 1'
DESIGN R.G.V.	DATE 8/24/21	SCALE 1/4" = 1'
DESIGN	DATE	SCALE



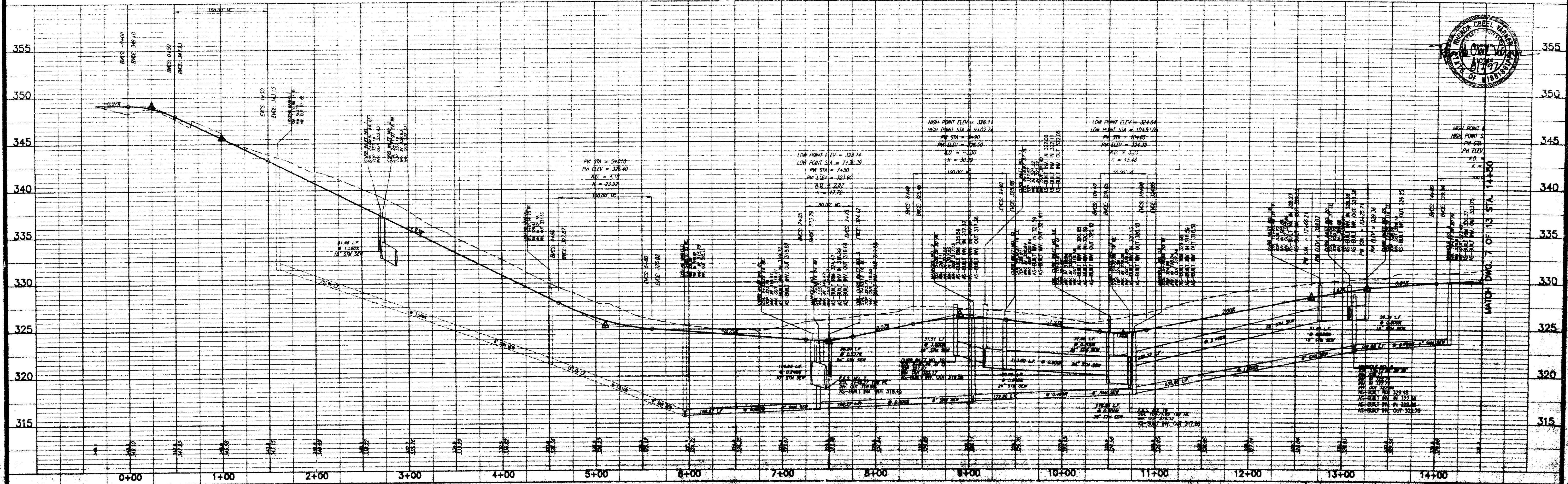
ASBUILT DRAWINGS	REVISED	DATE

CONSULTANTS, INC. 2000 W. 10TH AVE. SUITE 100, DENVER, CO 80202
 PHONE: (303) 733-1300 FAX: (303) 733-1301
 WWW.STERLINGCONSULTANTS.COM



RECORD DRAWING
 THESE DRAWINGS SHOW AS BUILT
 LOCATIONS OF WATER AND SEWER
 SYSTEMS ONLY.
 BY: *R. Hanna* DATE: *8/1/77*

SCALE 1"=50' HORIZ.
 1"= 5' VERT.



SHADOWOOD PARTS 3B, 3C & 3D
 CITY OF RIDGELAND
 MADISON COUNTY, MISSISSIPPI

PLAN AND PROFILE - PINEWOOD LANE
 STA. 0+00 - STA. 14+50

Prepared For
 SHADOWOOD PARTNERS

Checked By: RGV DATE: 1/25/79
 Date: 1/25/79



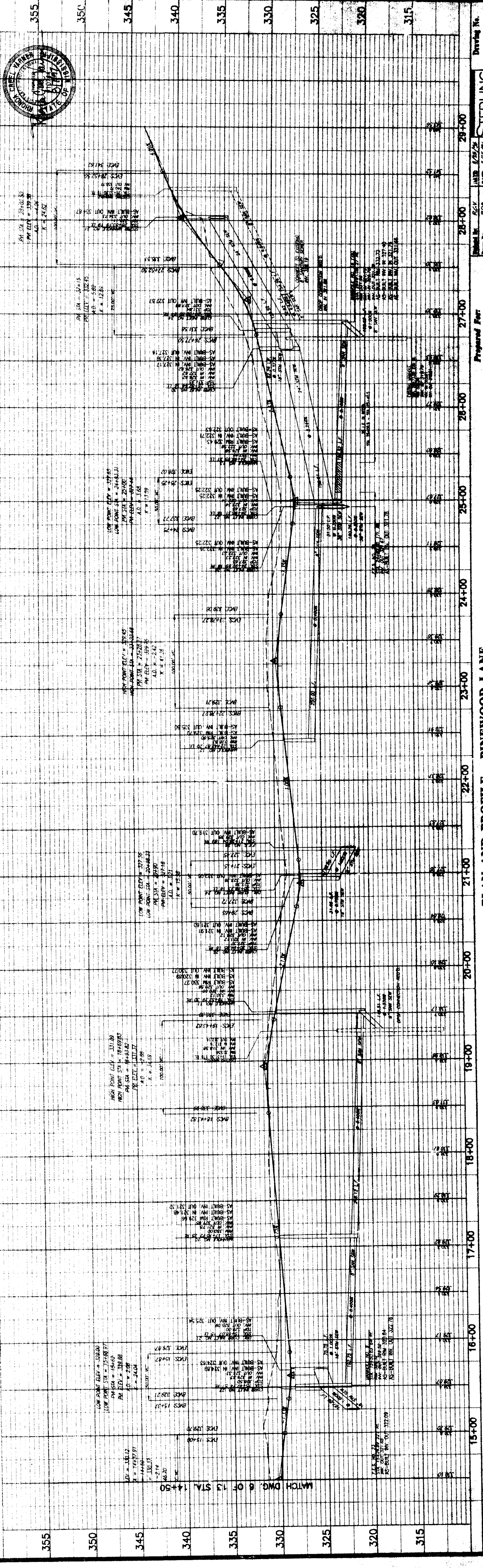
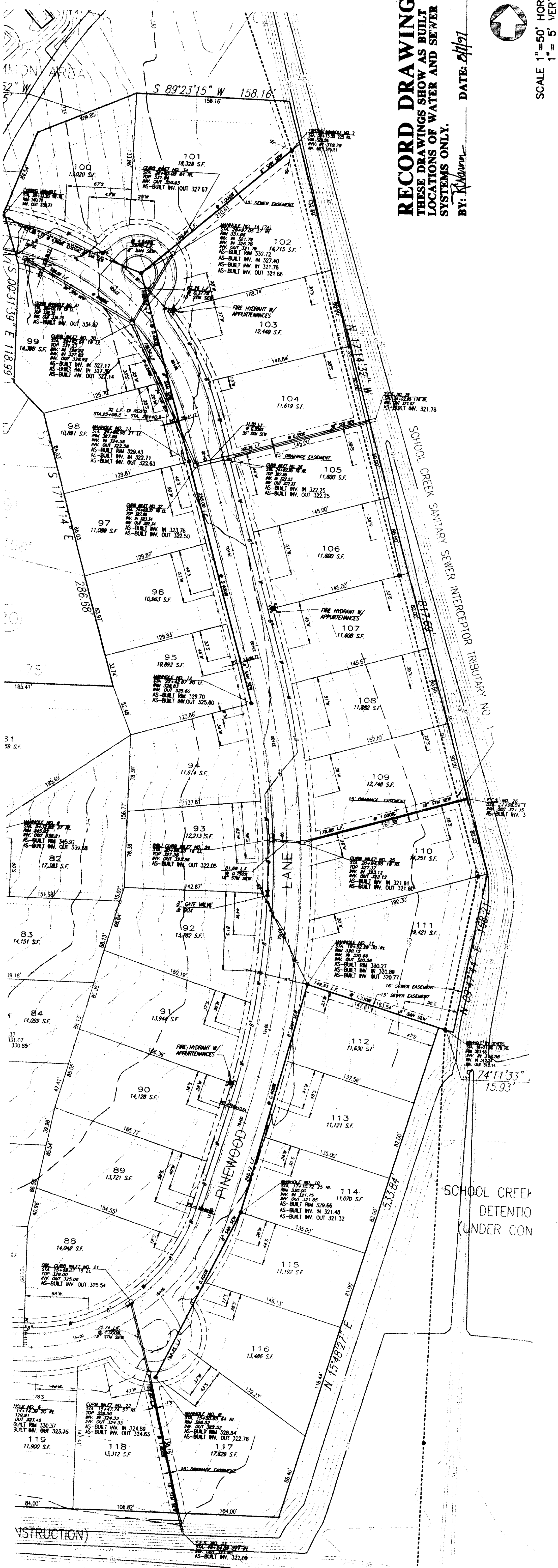
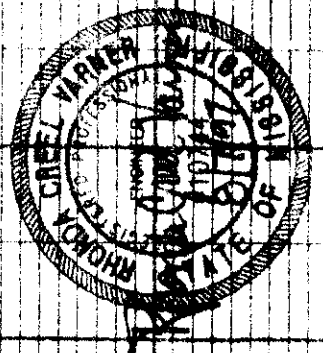
Drawing No.
 6 of 12

SHADOWOOD PART 3B, 3C & 3D, City of Ridgeland, Madison County, Mississippi, August 7, 1977, prepared by Sterling Consultants, Inc.

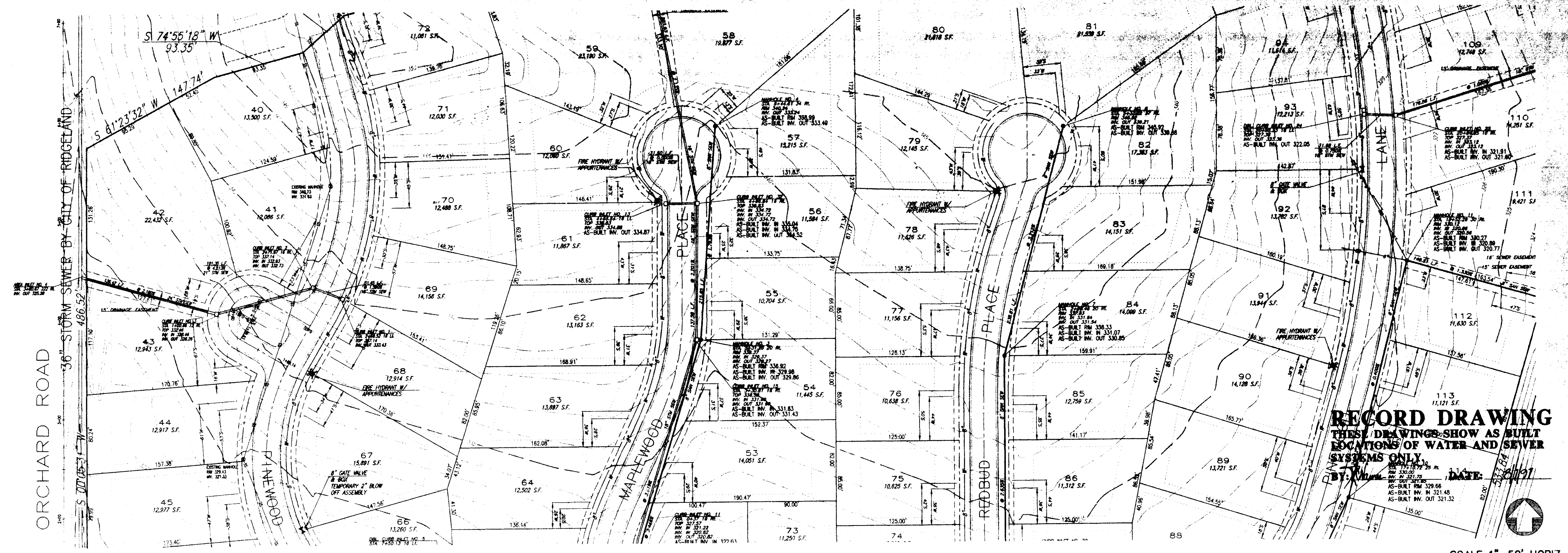
RECORD DRAWING
 THESE DRAWINGS SHOW AS BUILT
 LOCATIONS OF WATER AND SEWER
 SYSTEMS ONLY.

BY: *K. Mann* DATE: 8/1/97

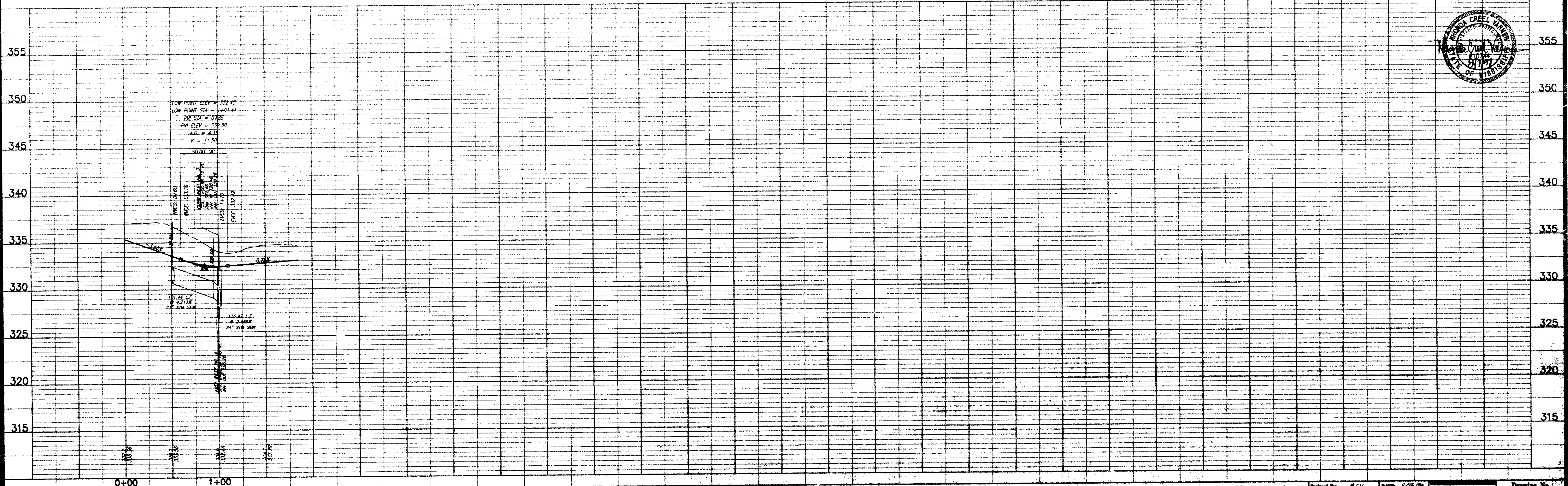
SCALE 1" = 50' HORIZ.
 1" = 5' VERT.



DRAWING No. 7 of 13
 PREPARED FOR: SEAWOOD PARTNERS
 PROJECT: SHADOWOOD PARTS 3B, 3C & 3D
 CITY OF RIDGELAND
 MADISON COUNTY, MISSISSIPPI
 PLAN AND PROFILE - PINWOOD LANE
 STA. 14+50 - STA. 29+00.07
 MATCH DWG. 6 OF 13 STA. 14+50



SCALE 1" = 50' HORIZ.
 1" = 5' VERT.



SHADOWWOOD PARTS 3B, 3C & 3D
 CITY OF RIDGELAND
 MADISON COUNTY, MISSISSIPPI

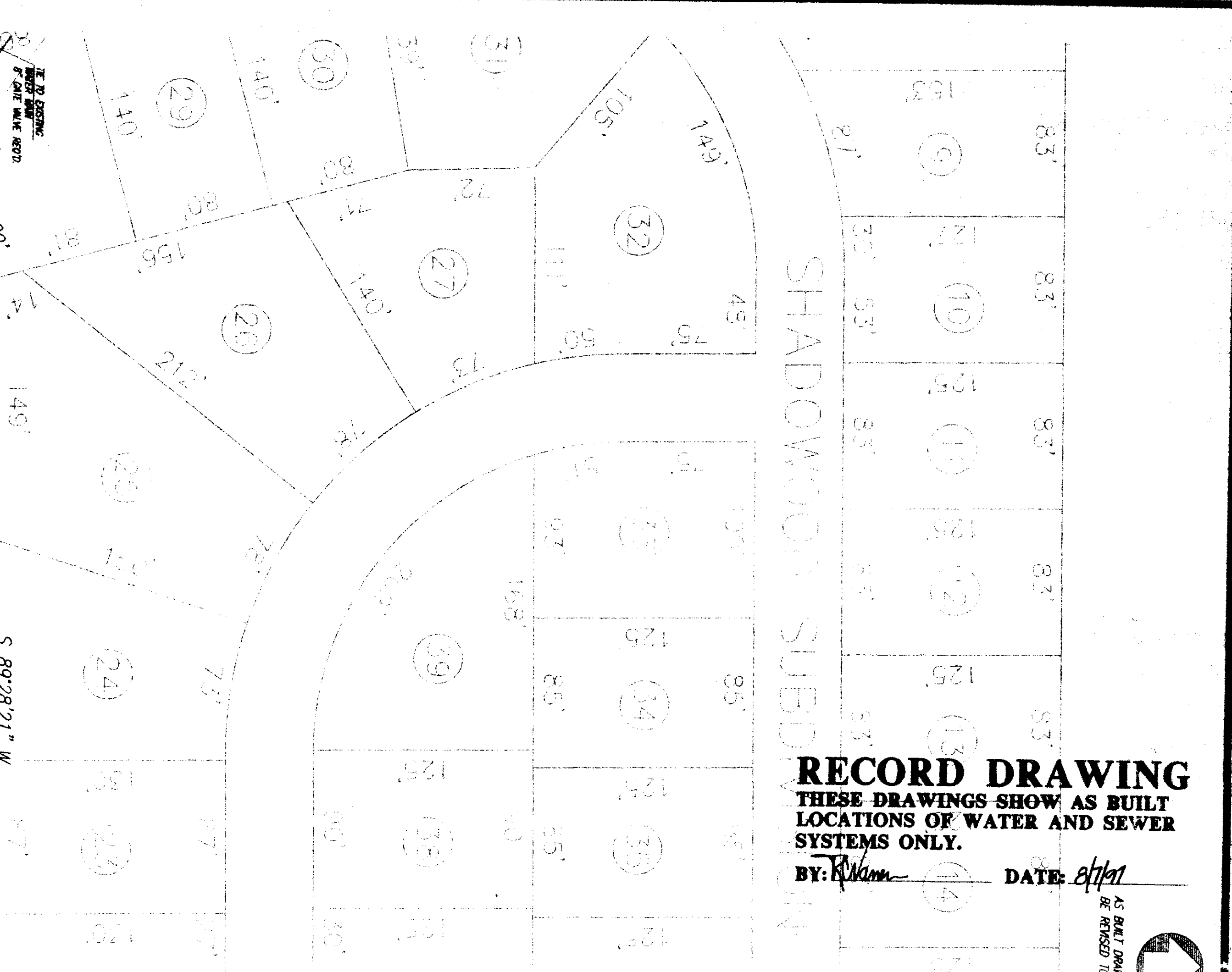
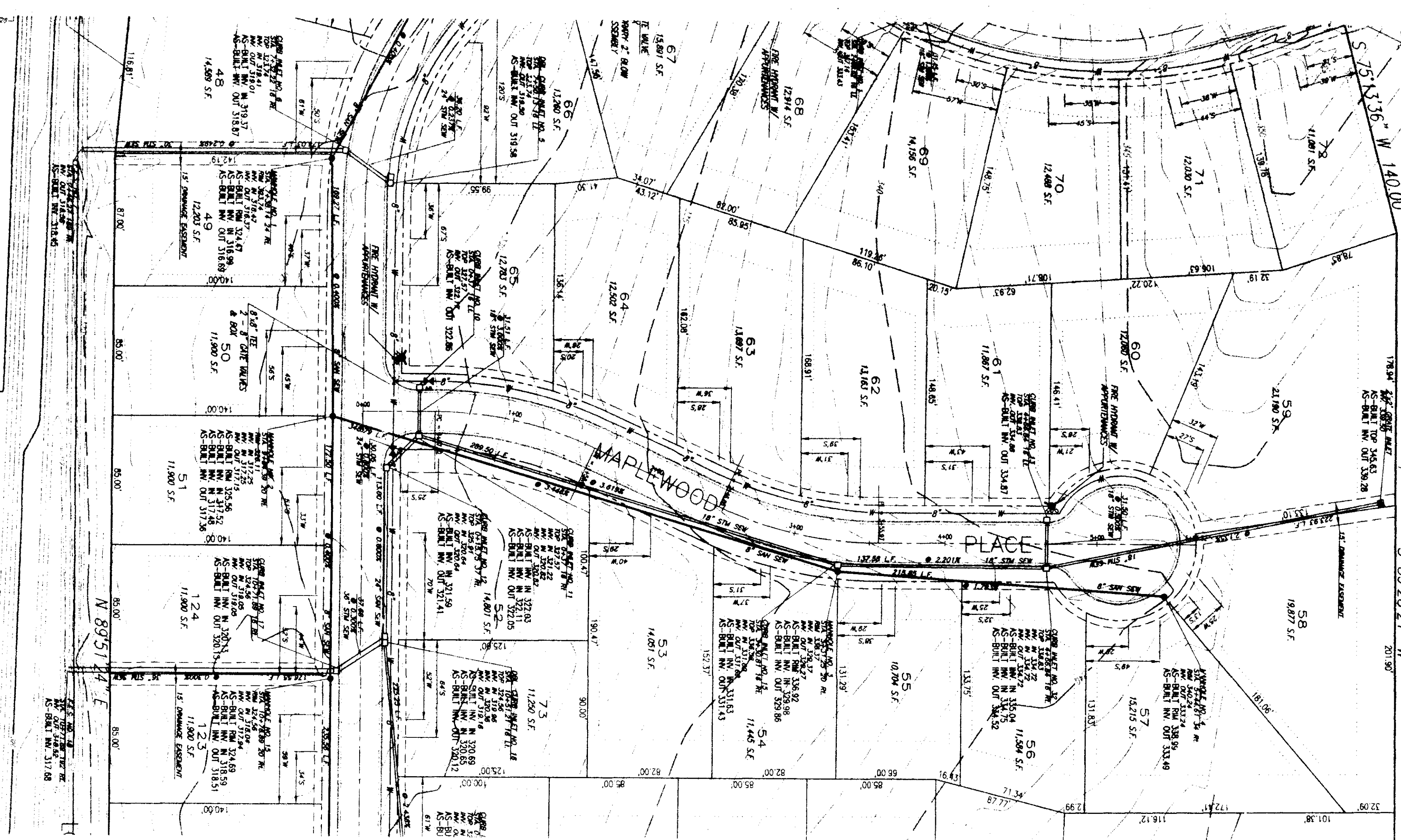
PLAN AND PROFILE - COVE
 STA. 0+00 - STA. 1+84.14

Prepared For:
 SHADOWWOOD PARTNERS

Designed By:	REV	DATE:	1/28/91
Drawn By:	RDS	DATE:	1/28/91
Checked By:	REV	DATE:	1/27/91
Scale:	HORIZ. 1" = 50'		
	VERT. 1" = 5'		

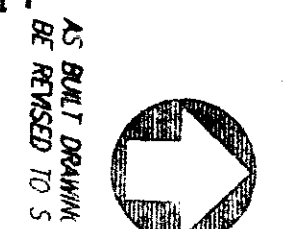
STERLING
 CONSULTANTS
 Drawing No.
 8 of 13

P. SHADOWWOOD-001, Thu, Aug 07 08:53:49 1997, Paul H. Wilhelm - Sterling Consultants, Inc.



RECORD DRAWING
 THESE DRAWINGS SHOW AS BUILT
 LOCATIONS OF WATER AND SEWER
 SYSTEMS ONLY.

BY: *R. Williams* DATE: *8/1/91*



SCALE 1"=50' HORIZ.
 1"= 5' VERT.



SHADOWOOD PARTS 3B, 3C & 3D
 CITY OF RIDGELAND
 MADISON COUNTY, MISSISSIPPI

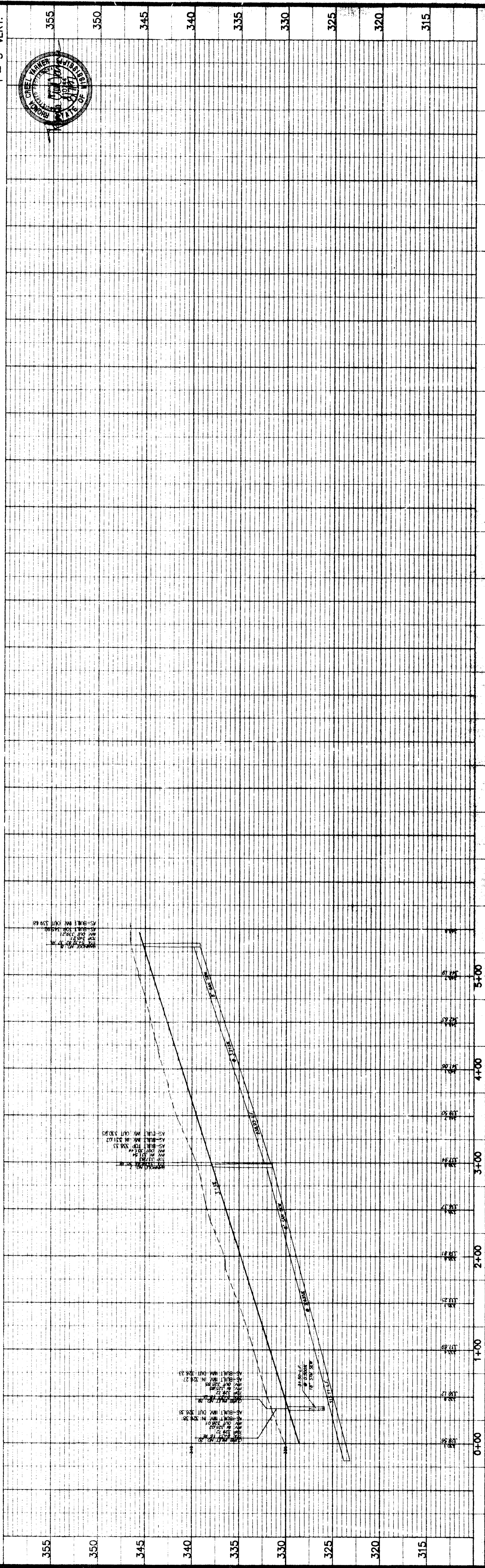
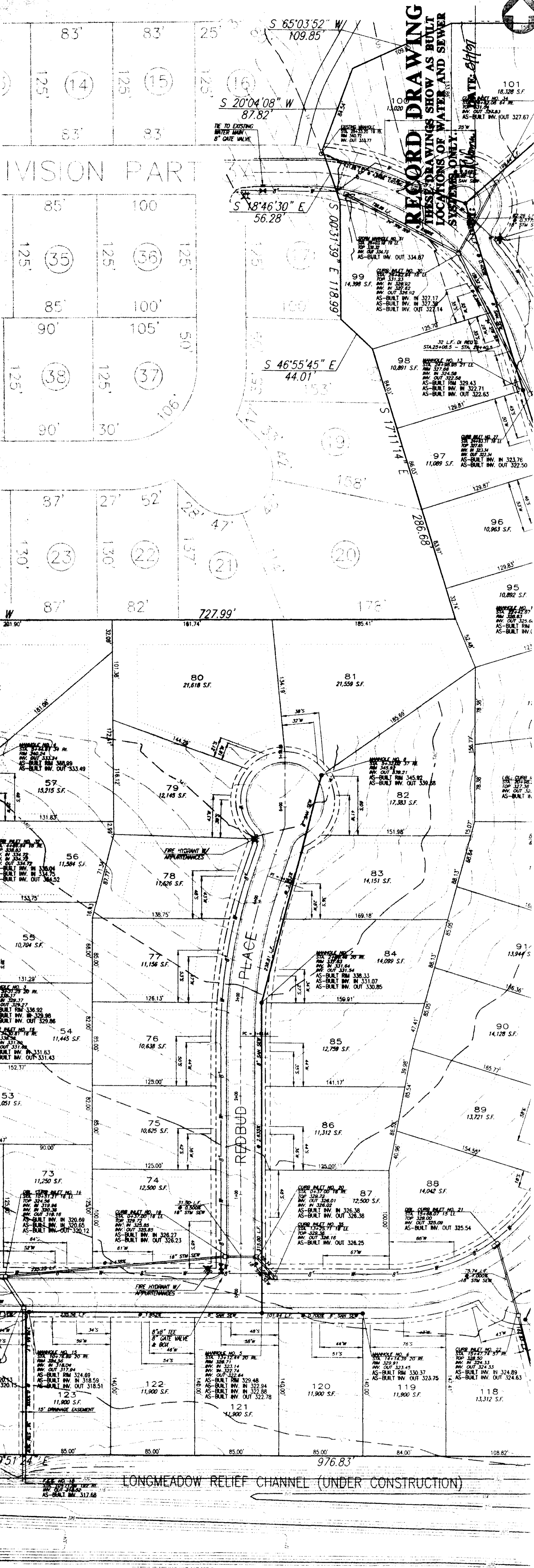
PLAN AND PROFILE - MAPLEWOOD PLACE
 STA. 0+00 - STA. 5+65.32

Prepared For:
 SHADOWOOD PARTNERS

Designed By:	RCV	DATE:	1/25/76
Drawn By:	RDP	DATE:	1/25/76
Checked By:	RCV	DATE:	1/25/76
Scale:	1"=50' HORIZ.	1"=5' VERT.	



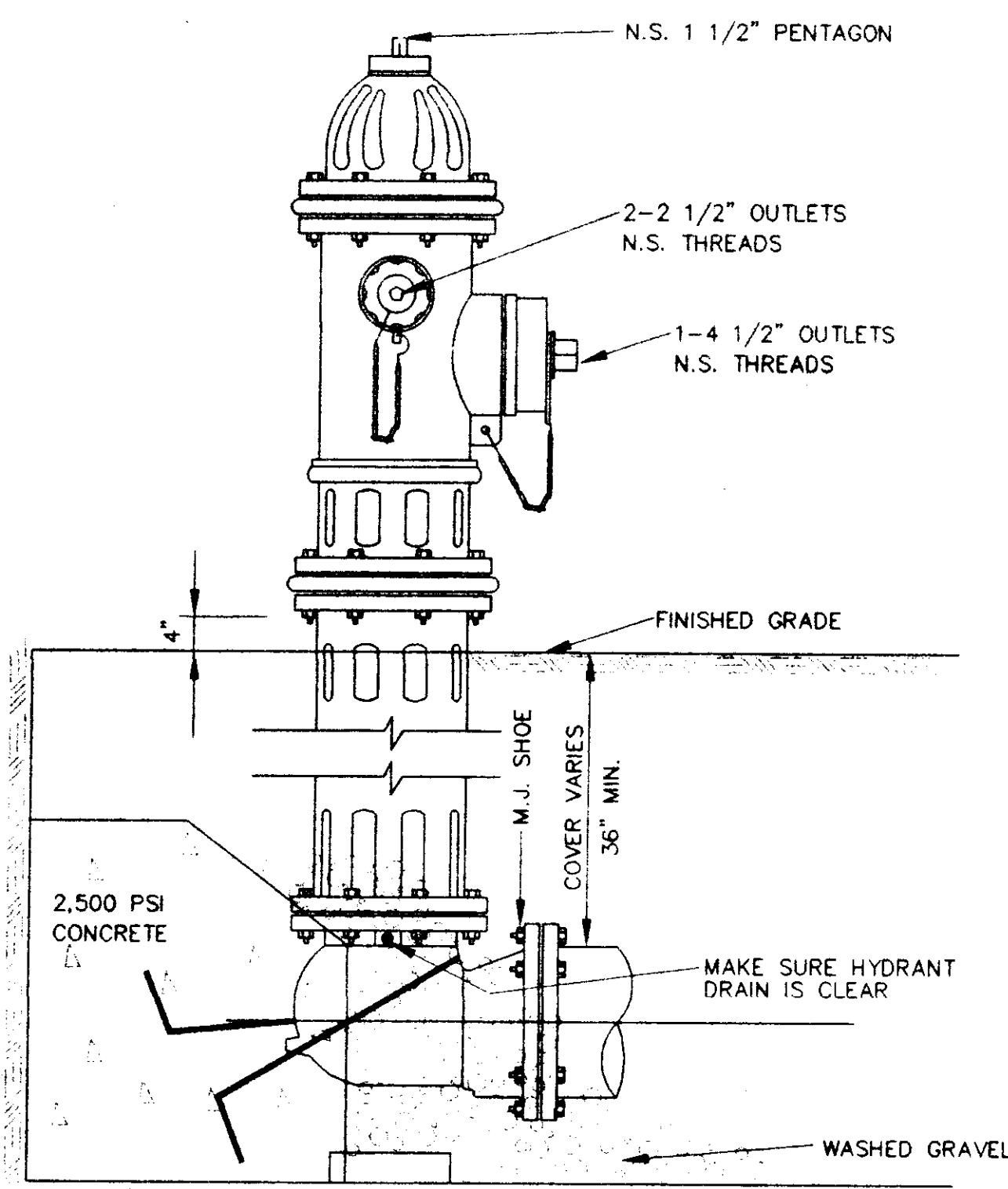
Drawn: 9



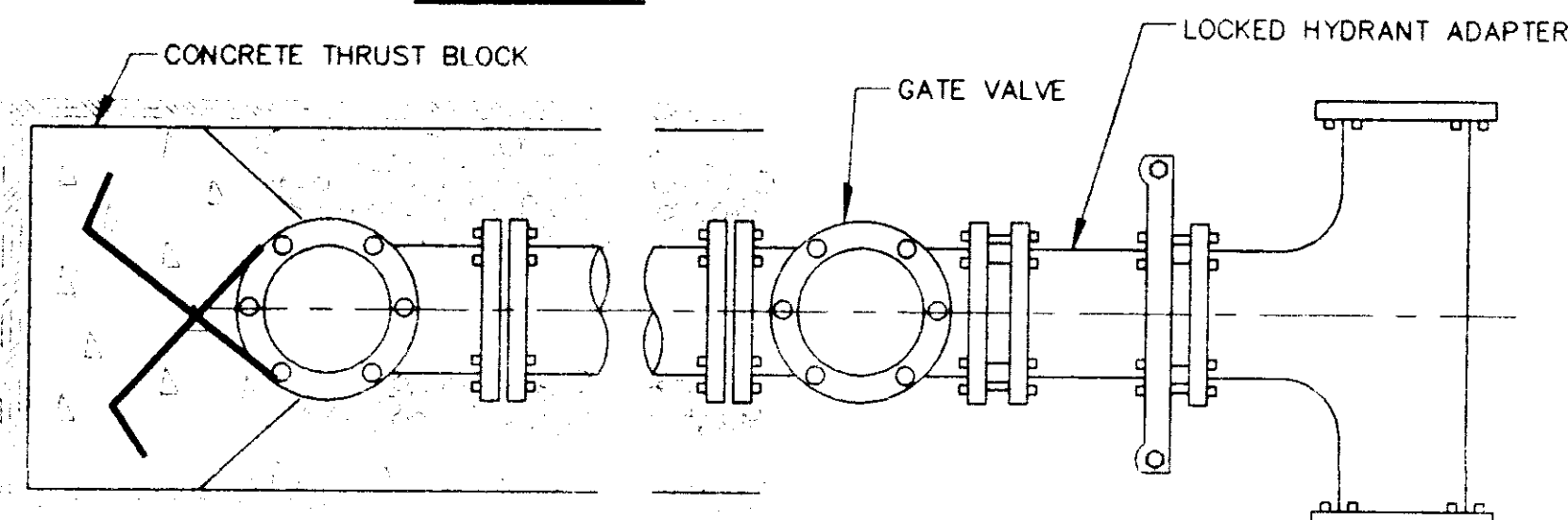
SHADOWWOOD PARTS 3B, 3C & 3D
 CITY OF RIDGELAND
 MADISON COUNTY, MISSISSIPPI

Prepared For:
 SEADOWOOD PARTNERS

STERLING
 10 of 13



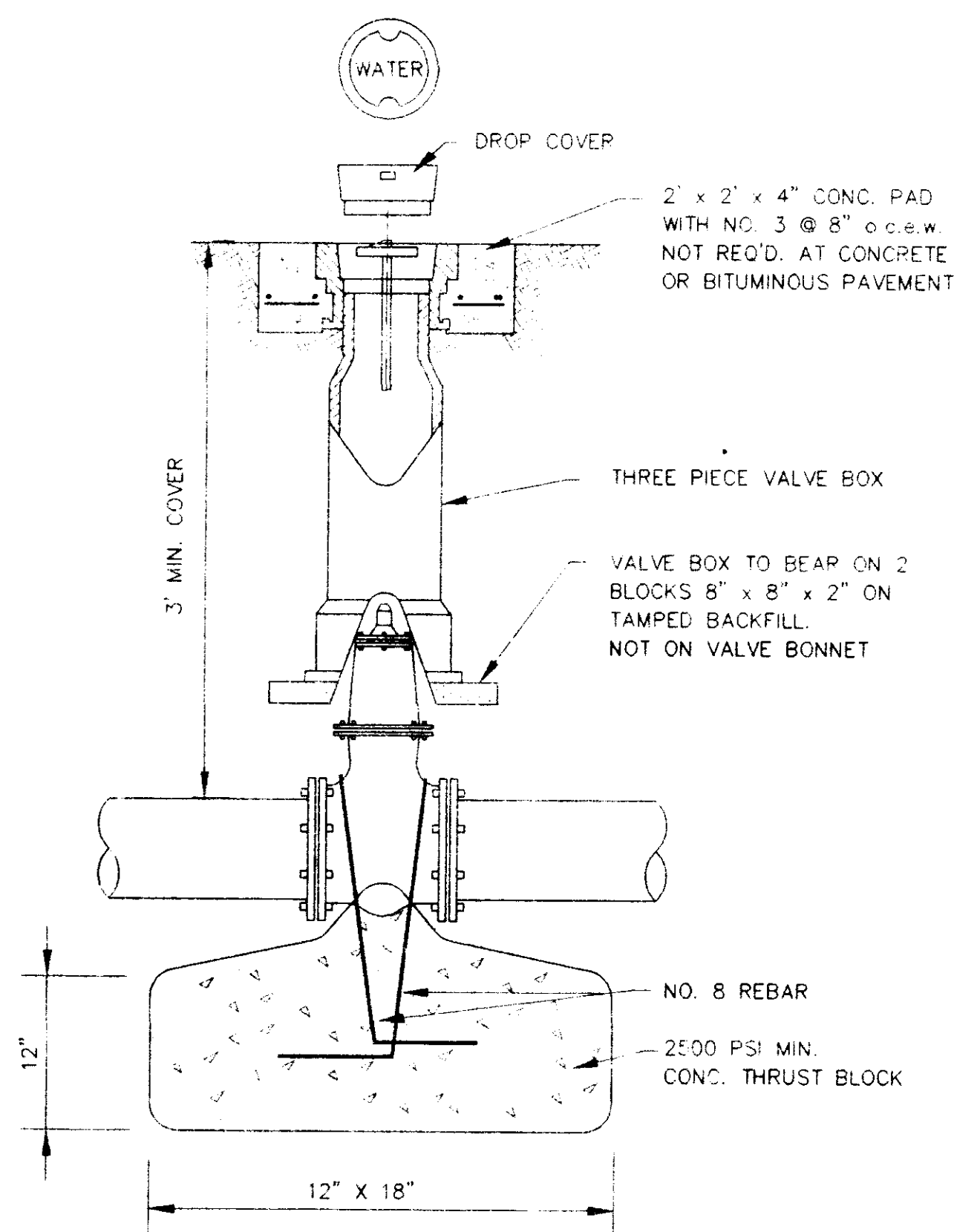
ELEVATION



PLAN

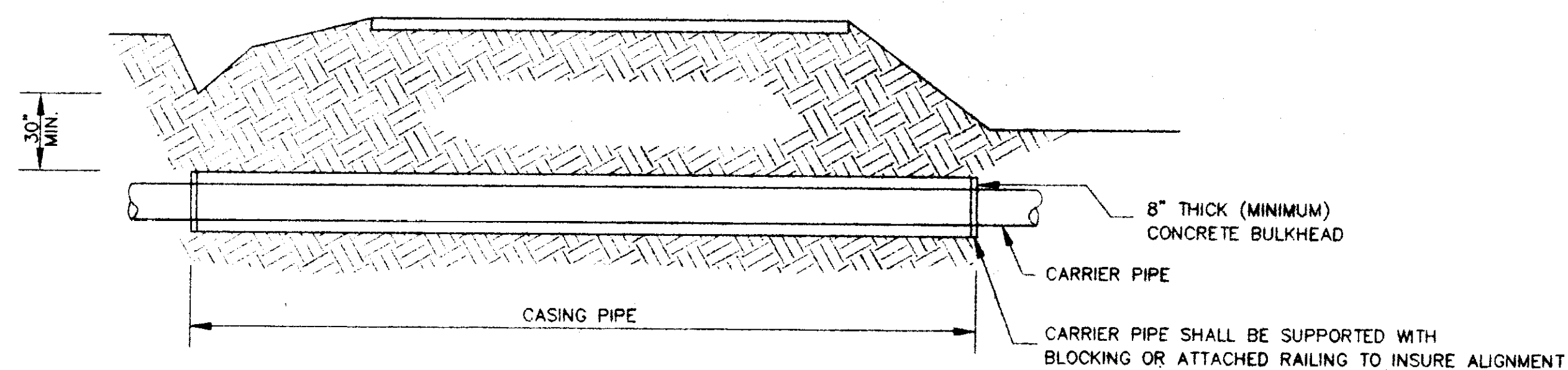
TYPICAL FIRE HYDRANT INSTALLATION

NOTE: GATE VALVES WILL BE REQUIRED ON ALL FIRE HYDRANT LEGS N.T.S.



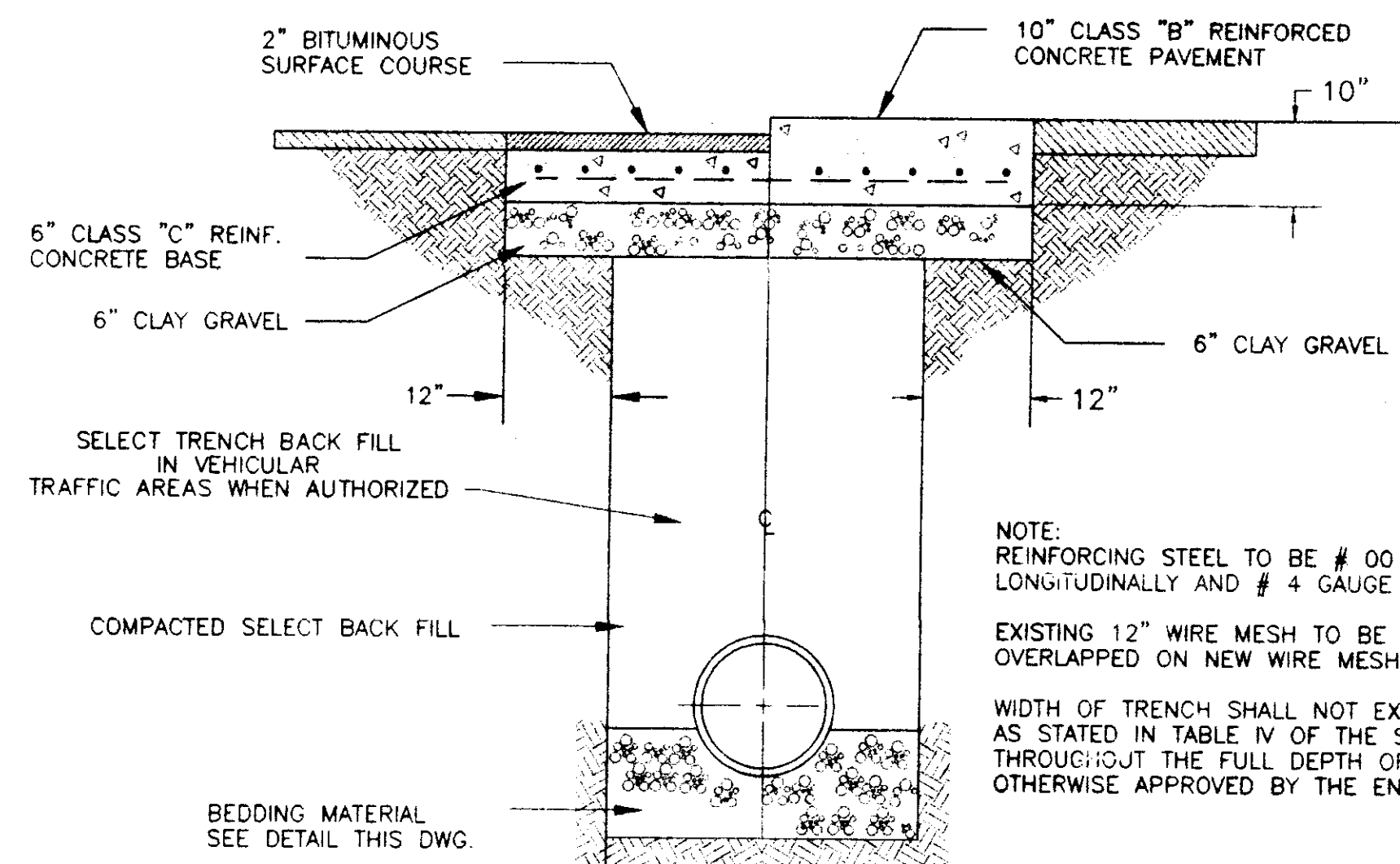
GATE VALVE DETAIL

NOT TO SCALE



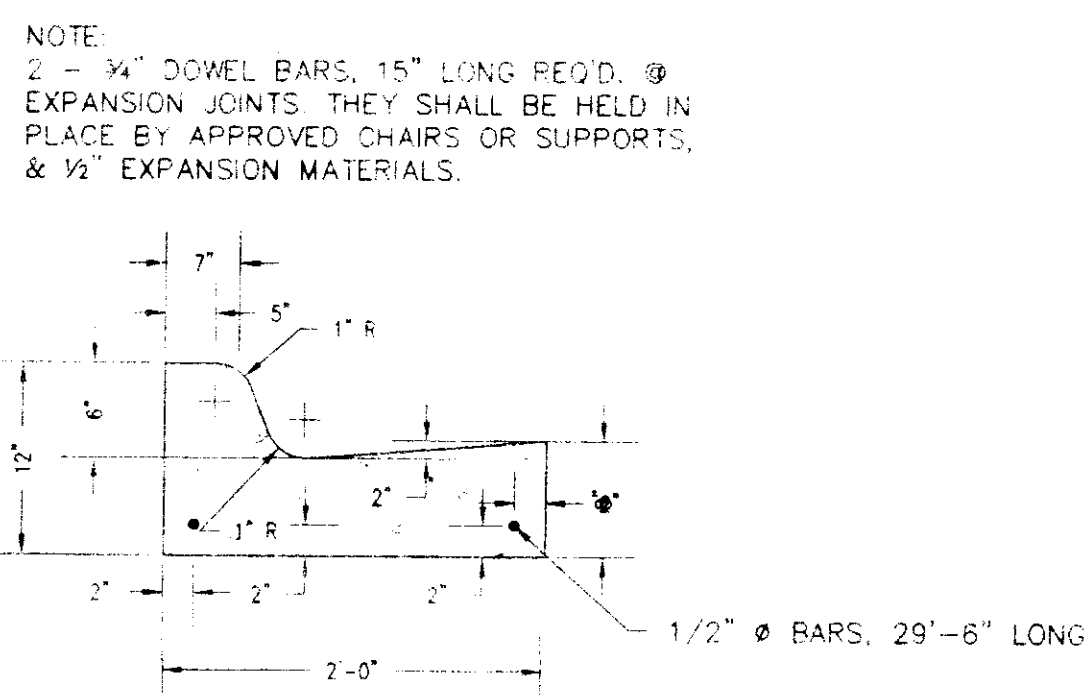
TYPICAL BORE SECTION

NOT TO SCALE



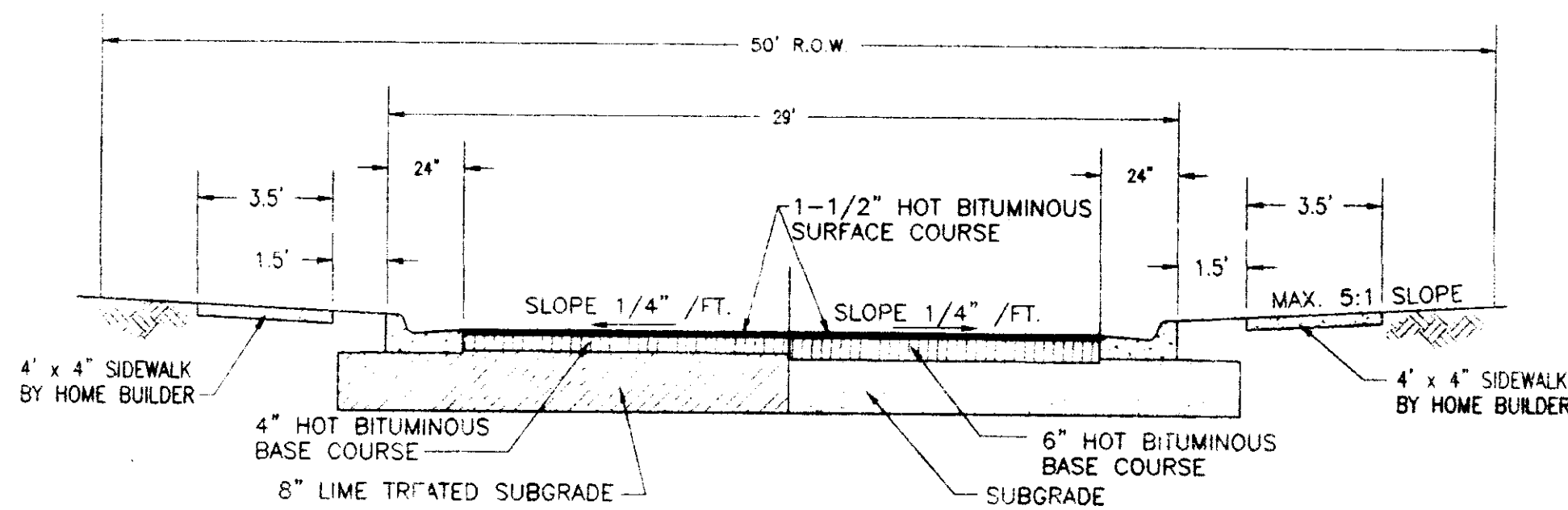
TYPICAL ROADWAY SECTION

NOT TO SCALE



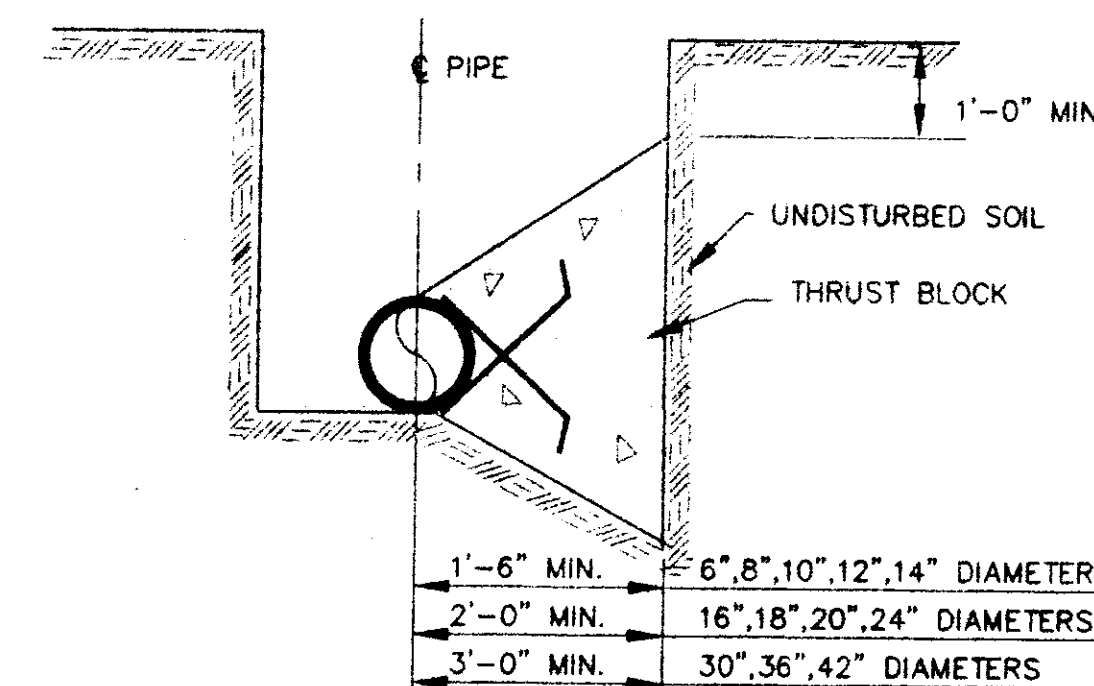
STANDARD CURB AND GUTTER

N.T.S.

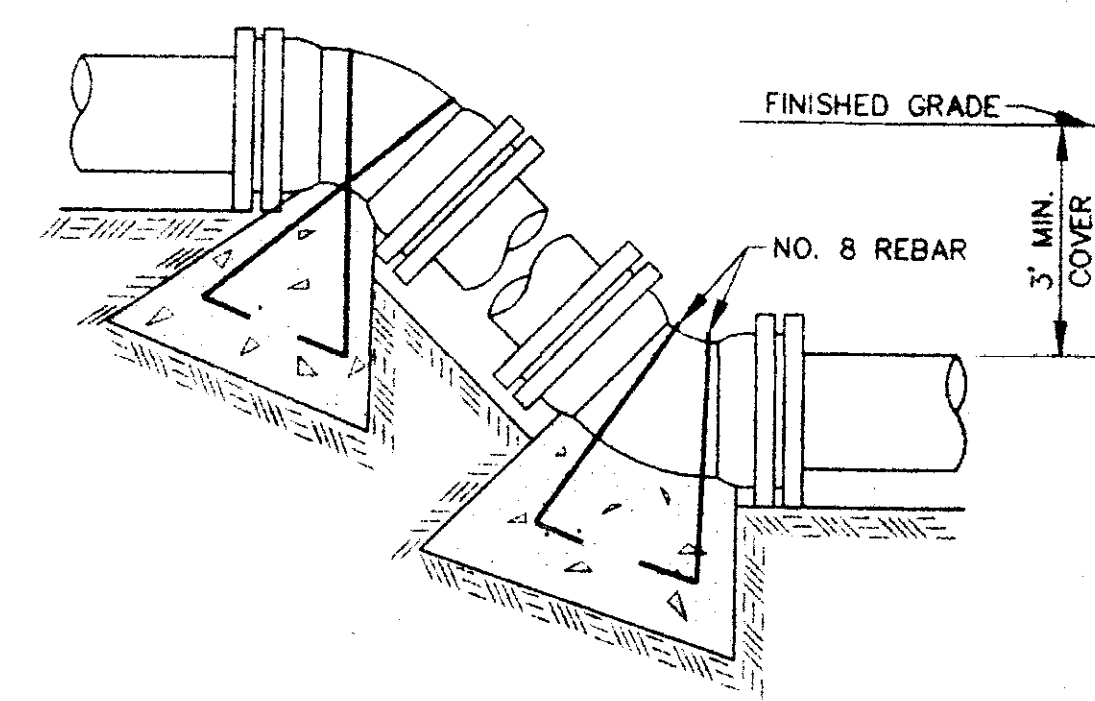


TYPICAL STREET SECTION

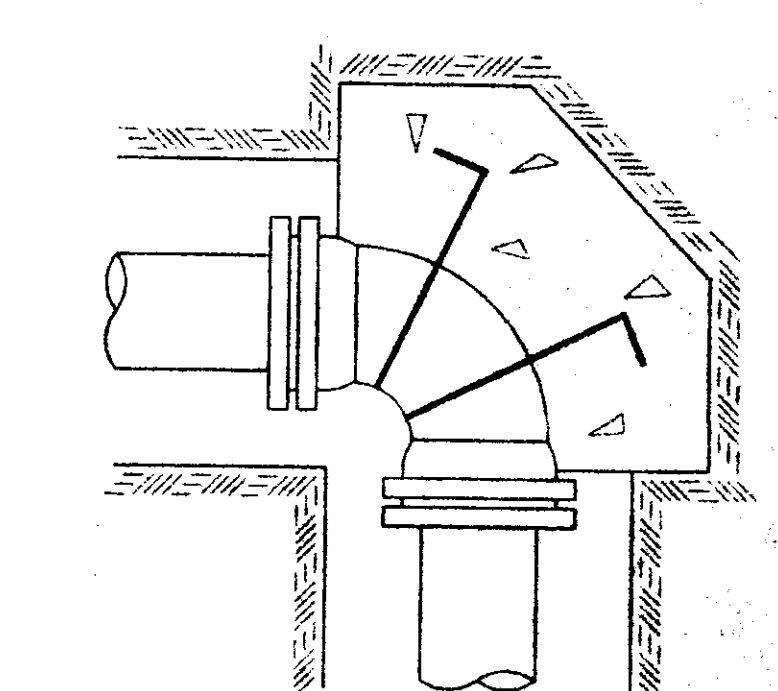
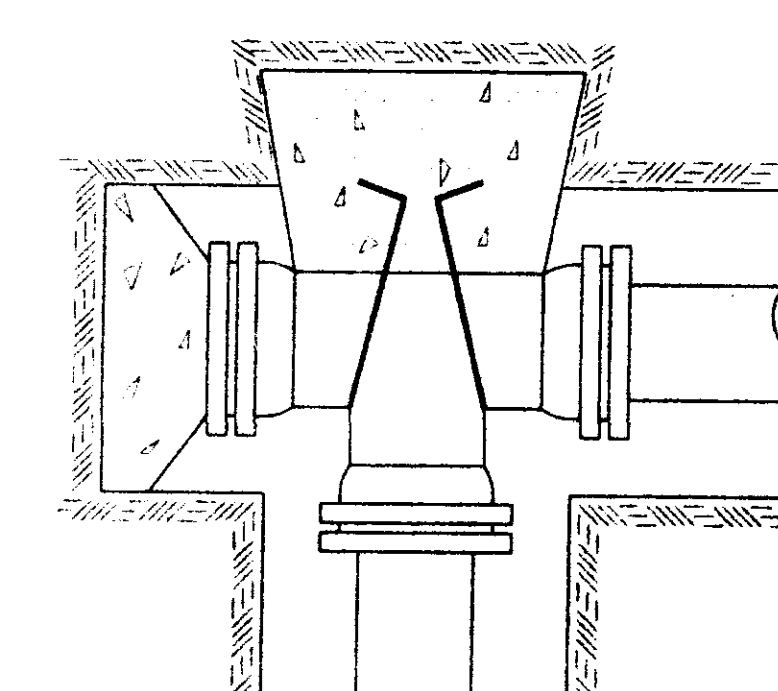
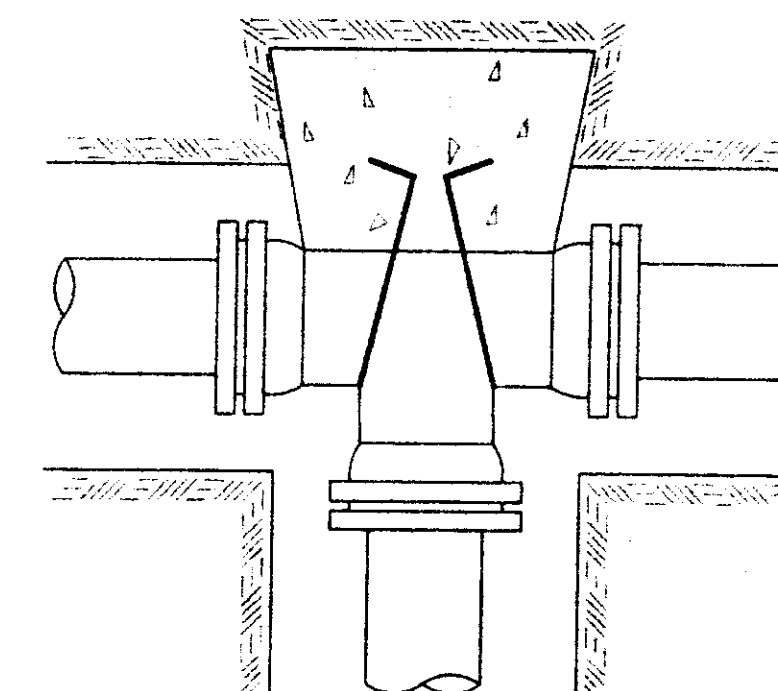
NOT TO SCALE



TYPICAL CROSS SECTION



VERTICAL BENDS

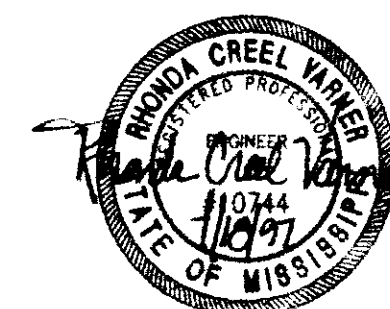


TYPICAL THRUST BLOCKING IN WATER MAINS AND SEWAGE FORCE MAINS

NOTE: ALL THRUST BLOCKS 2,500 PSI CONCRETE AGAINST UNDISTURBED EARTH

RECORD DRAWING
THESE DRAWINGS SHOW AS BUILT LOCATIONS OF WATER AND SEWER SYSTEMS ONLY.

BY: *R. Warner* DATE: 7/18/97



SHADOWOOD PARTS 3B, 3C & 3D
A DEVELOPMENT OF
SHADOWOOD PARTNERS

STANDARD
MISCELLANEOUS DETAILS

CITY OF RIDGELAND
MADISON COUNTY, MISSISSIPPI

DESIGNER: RCV	DATE: 07/17/97	STERLING Consultants	DRAWING NO.
DRAWN: RDB	DATE: 07/17/97		12
CHECKED: RCV	DATE: 07/17/97		
SCALE: AS SHOWN			

