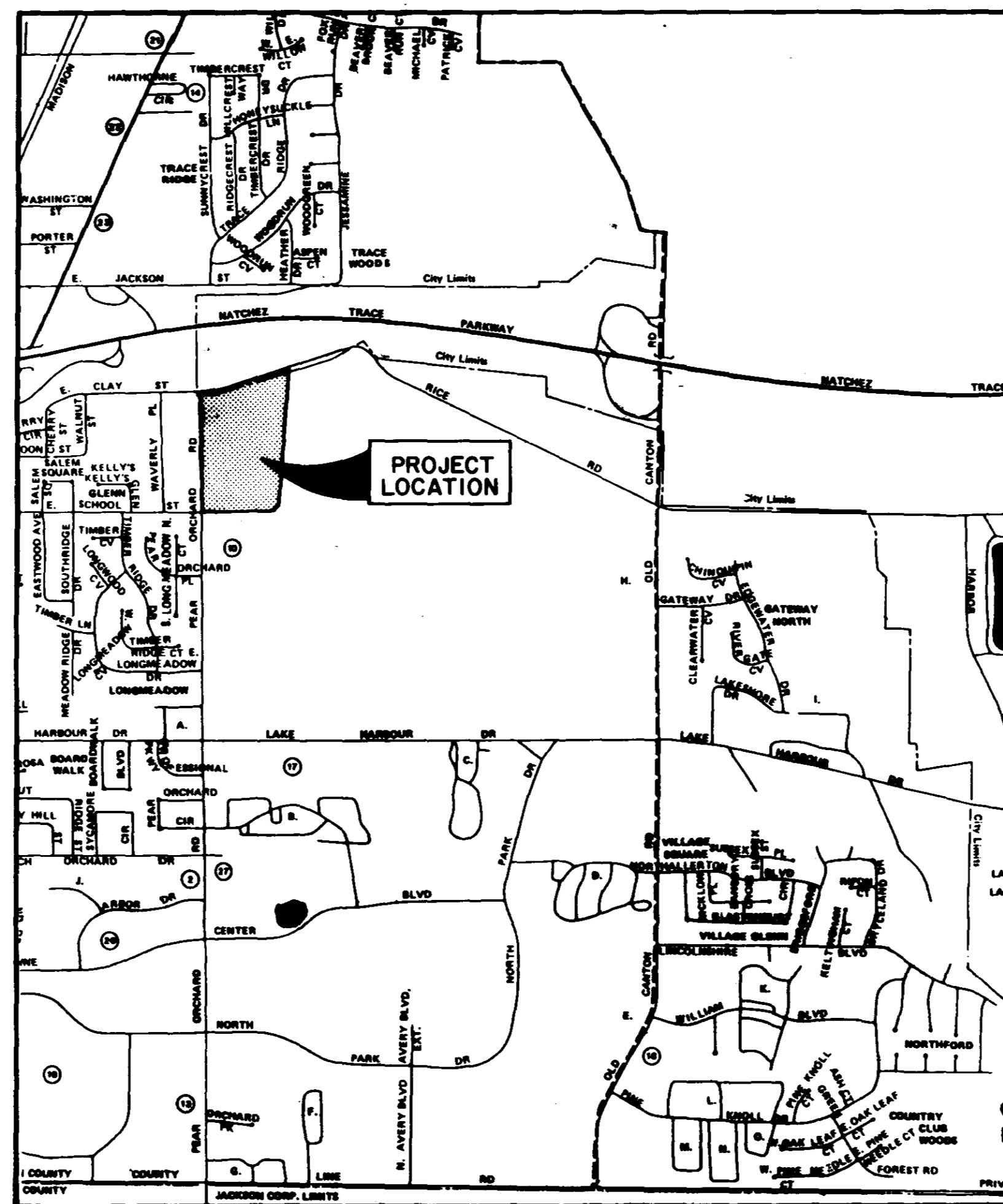


CONTRACT DRAWINGS
FOR

SHADOWWOOD SUBDIVISION

STREETS, DRAINAGE, SANITARY SEWER & WATER SYSTEM



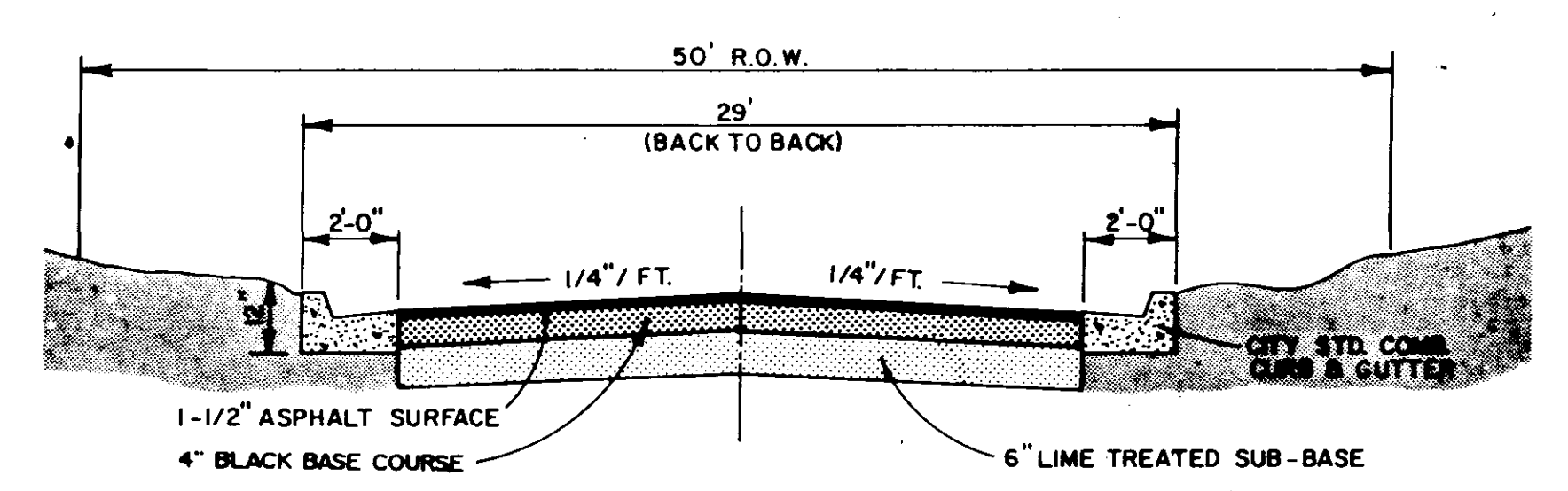
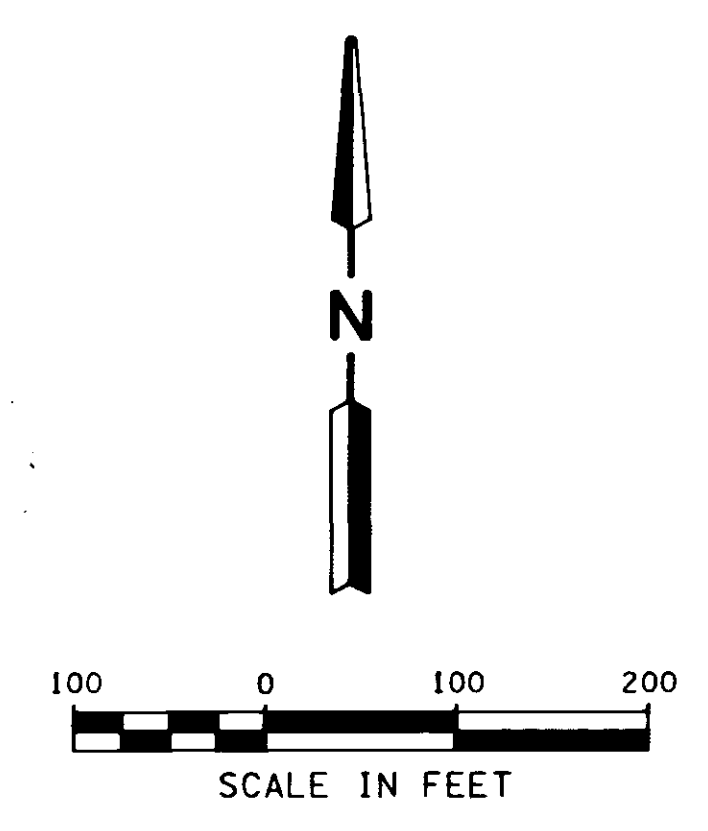
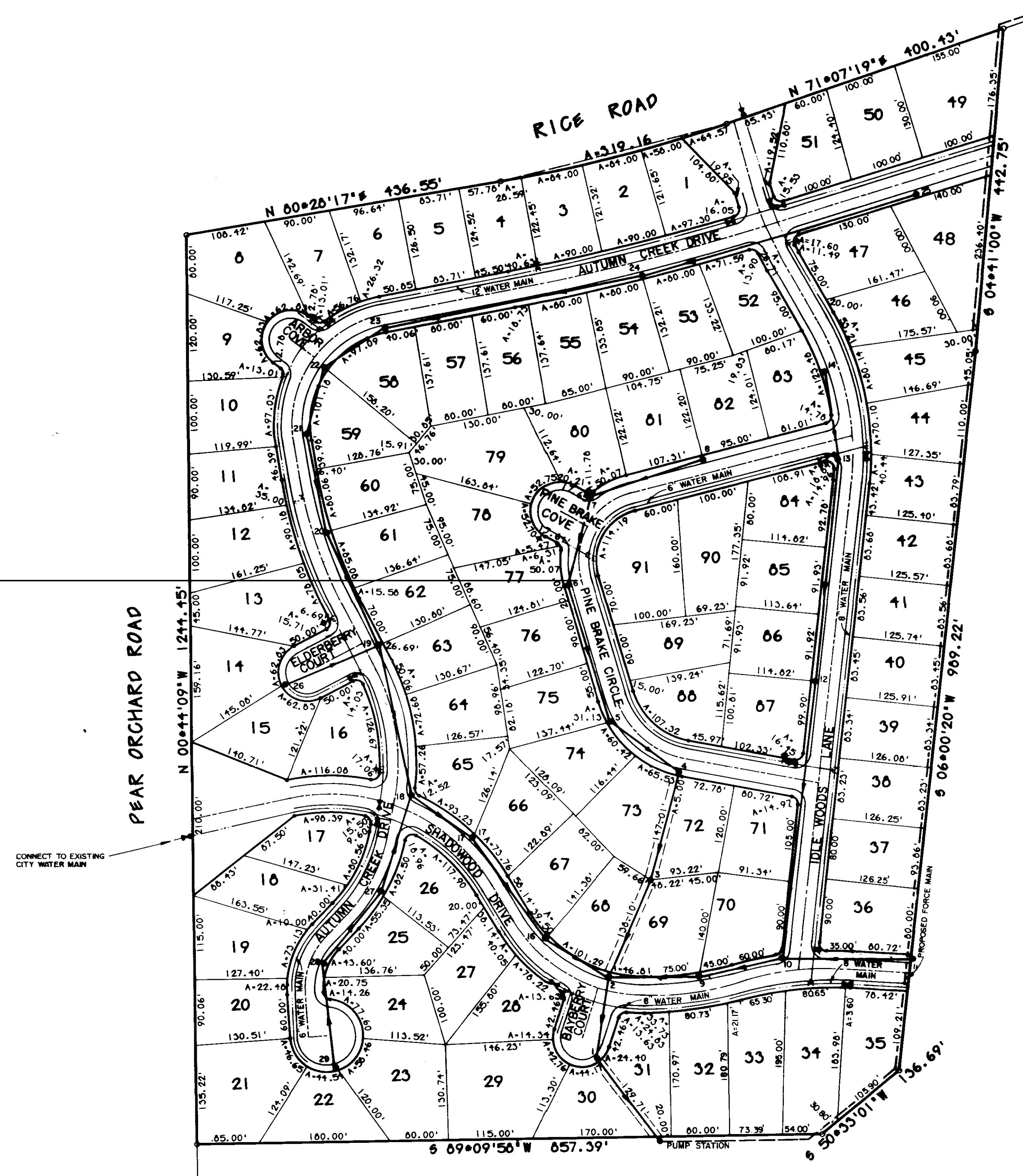
WATER DISTRIBUTION SYSTEM		
ITEM	QUANTITY	UNIT
Connection to Existing Water	1	Ea.
8" PVC Water Main, C-900, Class 150	3,700	L.F.
6" PVC Water Main, C-900, Class 150	1,990	L.F.
8" Gate Valve With Box	7	Ea.
6" Gate Valve with Box	6	Ea.
8"x8"x6" Cross	2	Ea.
8"x8"x8" Tee	1	Ea.
8"x8"x6" Tee	10	Ea.
6"x6"x6" Tee	3	Ea.
6" Fire Hydrant with Valve	9	Ea.
8" Plug	1	Ea.
6" Plug with 2" Blow-Off	5	Ea.
6" Plug	3	Ea.
Service Assembly	91	Ea.
3/4" Service Line	2,640	L.F.
Service Markers	91	Ea.
GRASS PLANTING		
Seeding	3.5	Acre

STREETS AND DRAINAGE		
ITEM	QUANTITY	UNIT
Clearing and Grubbing	7	Acres
Excavation - Common	10,233	C.Y.
Street Undercut and Select Backfill	4,000	C.Y.
Embankment	1,770	C.Y.
Sub-Base Preparation	21,000	S.Y.
1 1/2" Asphalt Surface	17,050	S.Y.
4" Black Base Course	17,050	S.Y.
Concrete Curb and Gutter	11,630	L.F.
Curb Inlets	17	Ea.
15" RCP	842	L.F.
18" RCP	633	L.F.
24" RCP	362	L.F.
42" RCP	617	L.F.
6'x4' Box Culvert	372	L.F.
8'x4' Box Culvert	201	L.F.
42" Flared End Section	1	Ea.
SANITARY SEWER		
Connection to Existing MH with Force Main	1	Ea.
8" Gravity Sewer (0'-6')	2,764	L.F.
8" Gravity Sewer (6'-8')	1,847	L.F.
8" Gravity Sewer (8'-10')	320	L.F.
8" Gravity Sewer (10'-12')	45	L.F.
48" Manhole (0'-6')	17	Ea.
48" Manhole (6'-8')	11	Ea.
48" Manhole (8'-10')	1	Ea.
48" Manhole (10'-12')	2	Ea.
Drop Connection to Manhole	1	Ea.
Service Tee	169	Ea.
Service Line (6")	5,500	L.F.
Service Markers	91	Ea.
Pump Station	1	L.S.
4" Force Main	6,400	L.F.
Undercut and Select Backfill	300	C.Y.
Air Release Valve	3	L.S.

INDEX OF DRAWINGS	
Cover Sheet	1

VICINITY MAP

PWP-01924



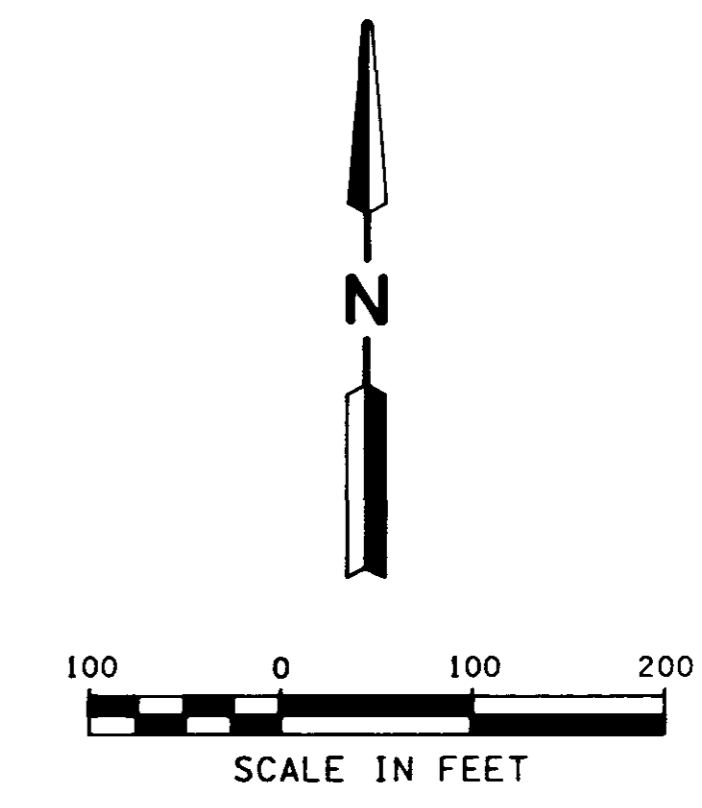
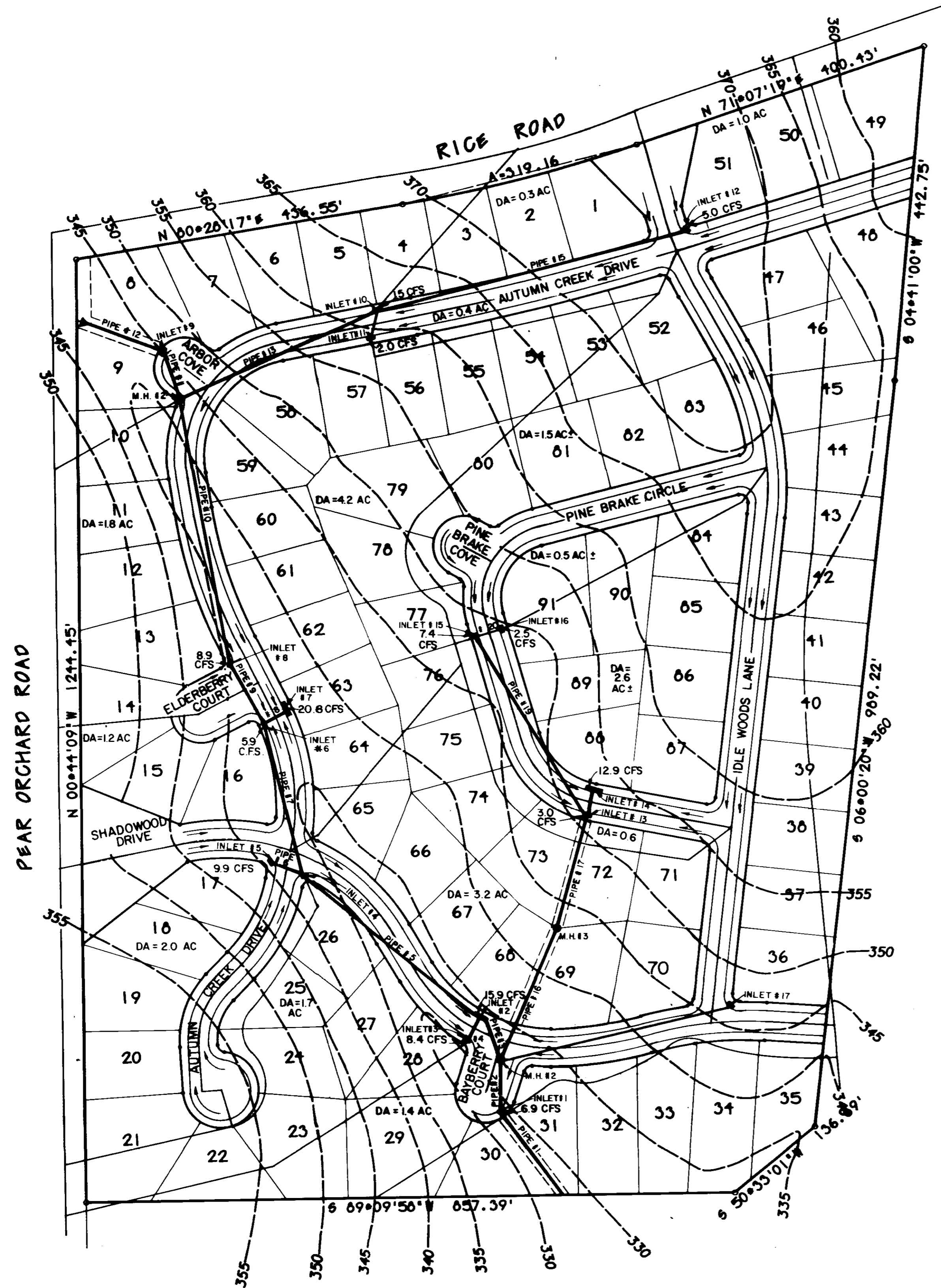
TYPICAL STREET SECTION

NOTE: 10' UTILITY EASEMENT ALONG THE BACK SIDE OF ALL STREETS.

Browning, Inc. \Test\shadowne-ca\sgn\as3-00.dgn 05/22/93 08:45:44 05/22/93

Prepared by
BROWNING, INC.
CONSULTING ENGINEERS-SURVEYORS
P.O. Box 12711
1008 Ridgewood Place
Jackson, Mississippi 39211

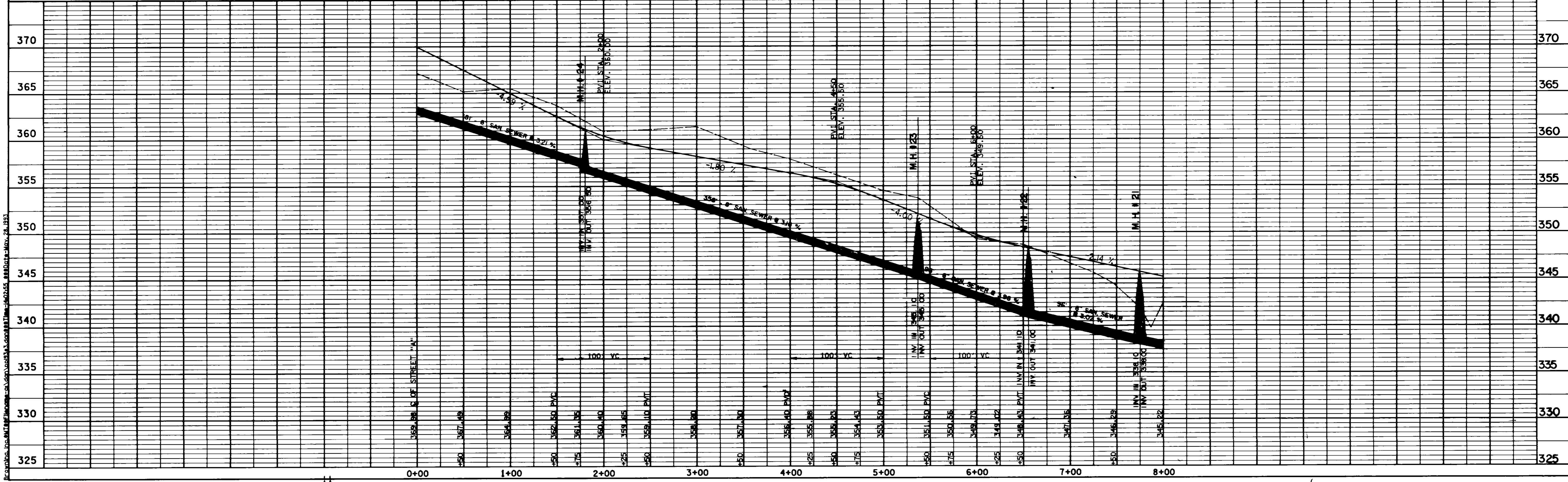
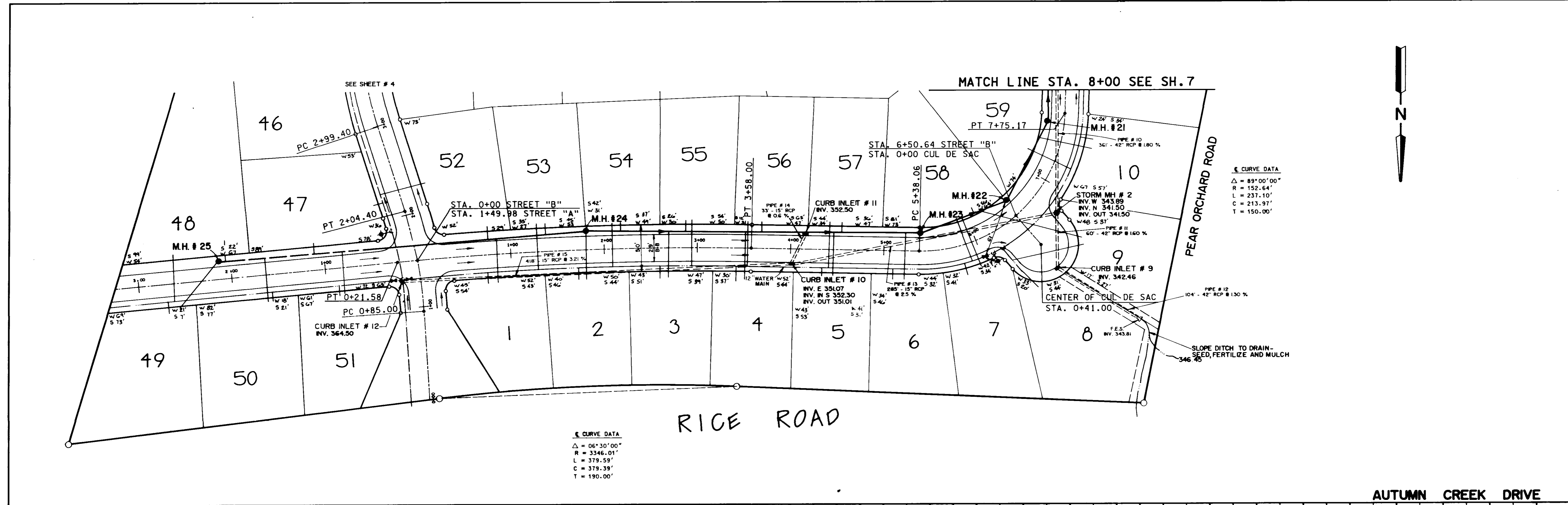
SHADOWOOD SUBDIVISION		
GENERAL LAYOUT		
BROWNING INC. Consulting Engineers Jackson, Mississippi		
Designed By : P.L.B.	Scale : 1" = 100'	Sheet 2 Of 15
Drawn By : M.T.	Date : MAY, 1993	



NOTE: 10' UTILITY EASEMENT ALONG THE BACK SIDE OF ALL STREETS.

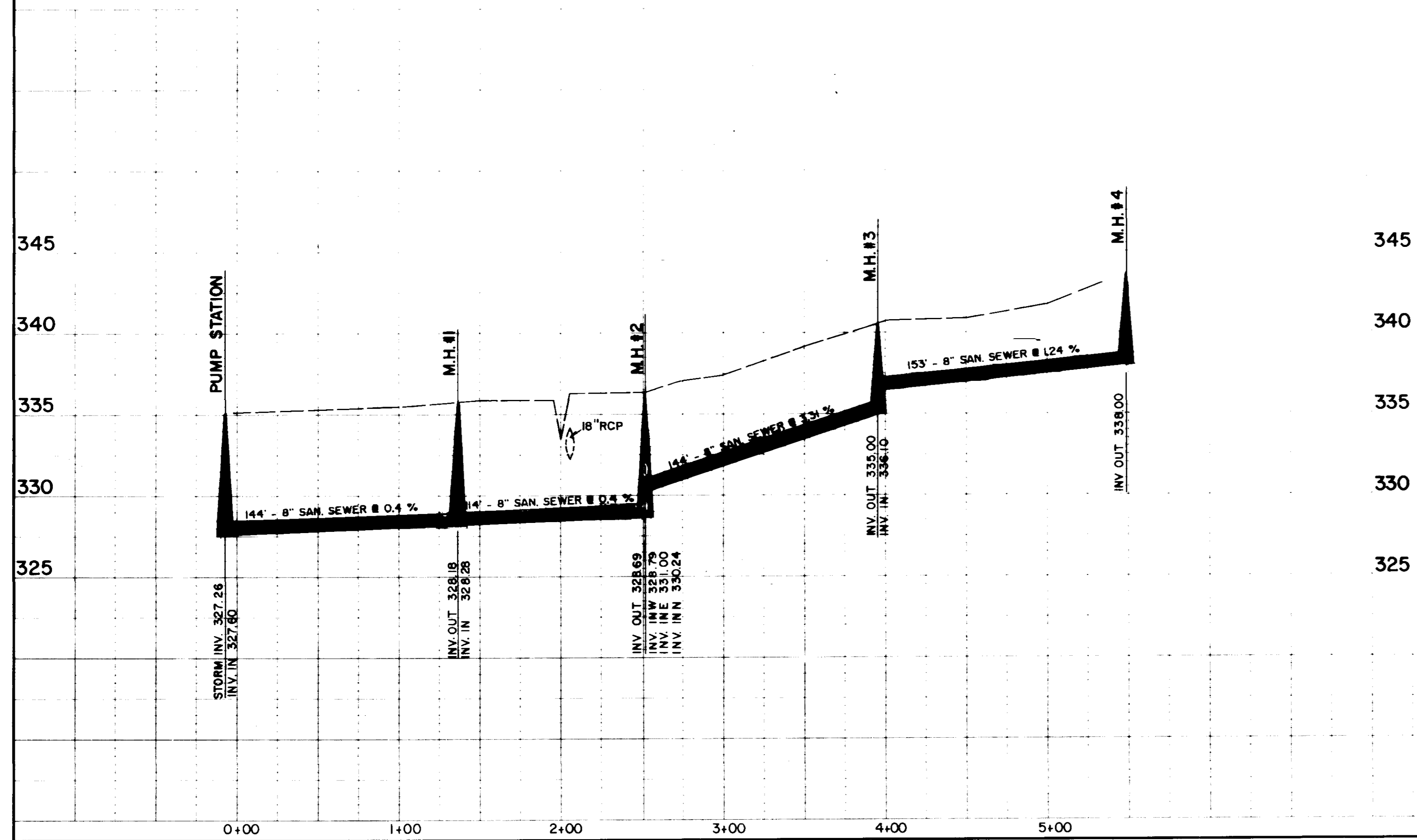
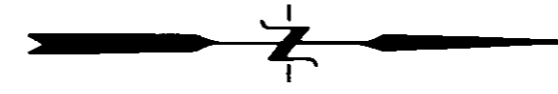
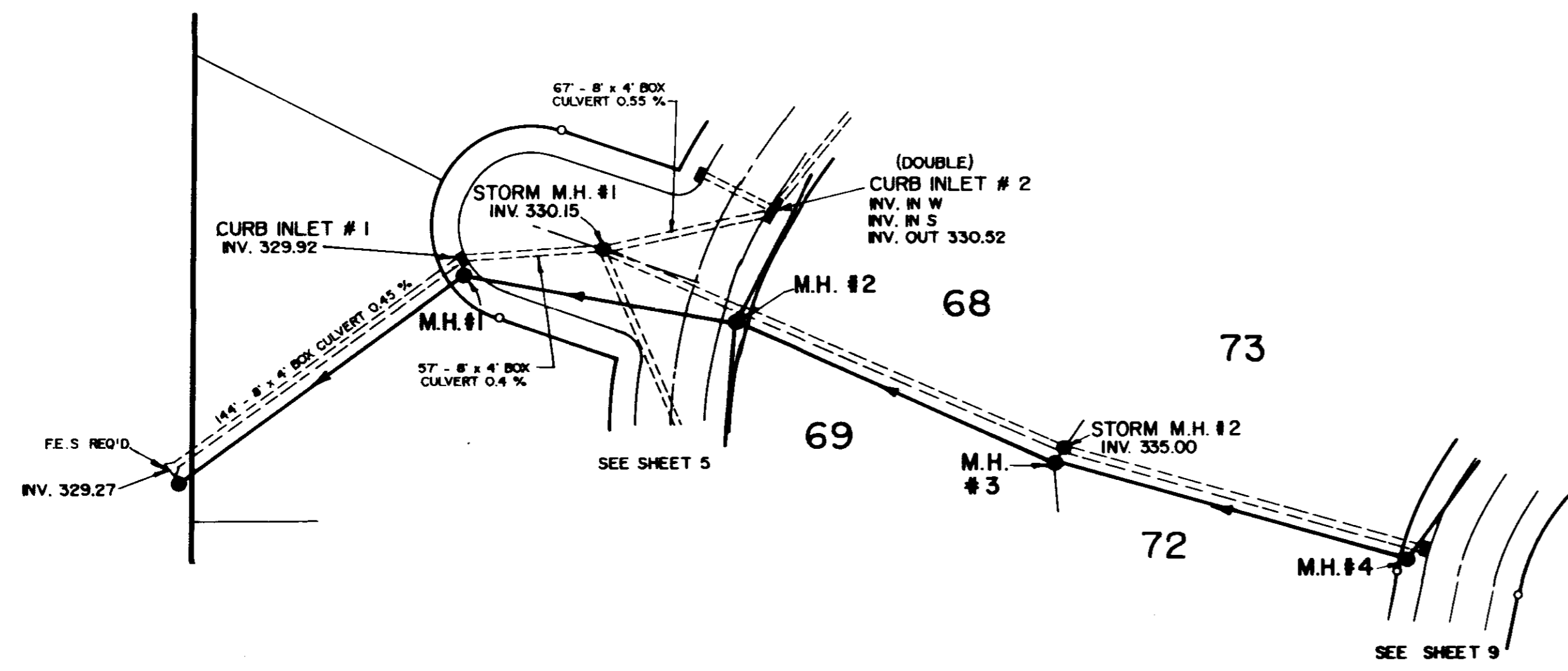
SHADOWWOOD SUBDIVISION		
DRAINAGE LAYOUT		
BROWNING INC. Consulting Engineers Jackson, Mississippi		
Designed By : P.L.B.	Scale : 1" = 100'	Sheet 3 of 15
Drawn By : M.T.	Date : MAY, 1993	

Prepared by
BROWNING, INC.
 CONSULTING ENGINEERS-SURVEYORS
 P.O. Box 12711
 1058 Ridgewood Plaza
 Jackson, Mississippi 39211



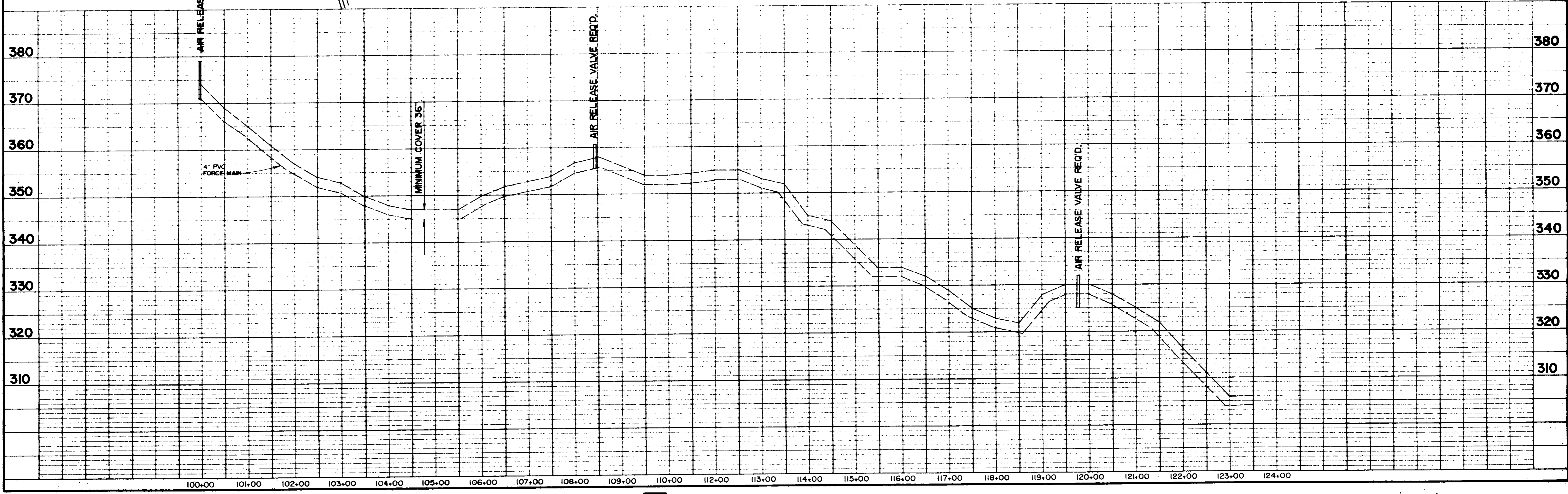
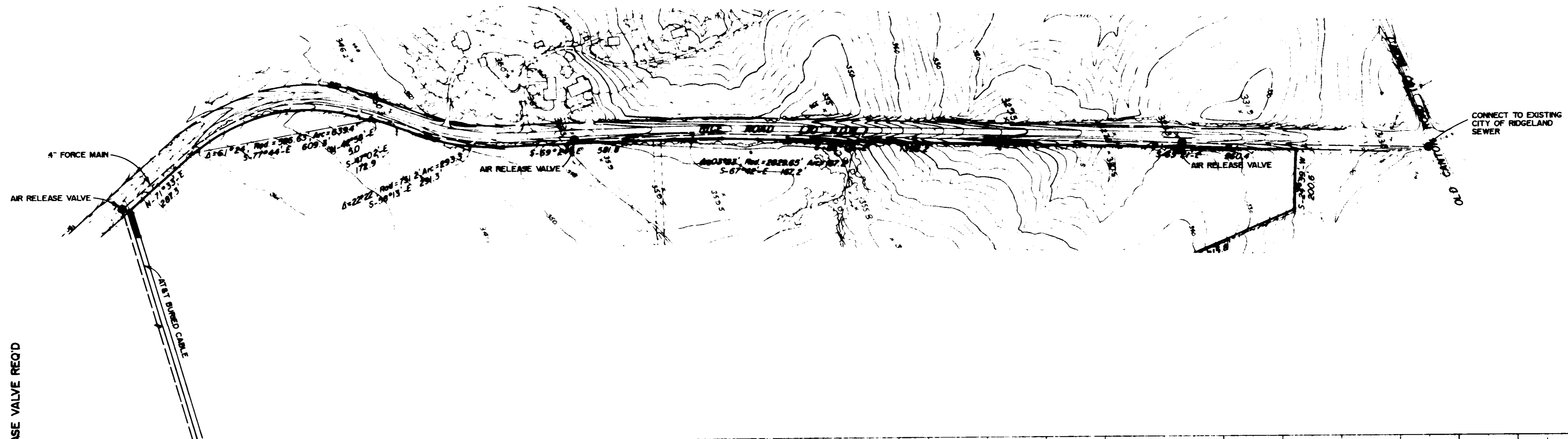
DATE	
BY	
REVISIONS	
NOTED	
ALIGNED	
CHECKED	
IN CHARGE	
NO.	

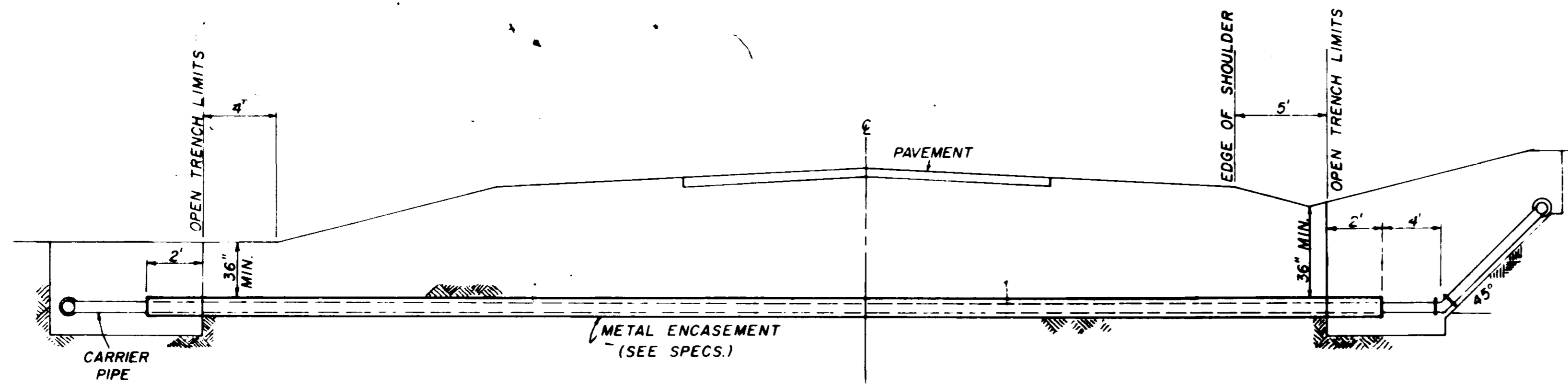
DATE	
BY	
REVISIONS	
NOTED	
CHECKED	
IN CHARGE	
NO.	



DATE	
BY	
PROJECT	
LOCATION	
SCALE	
NO. OF SHEETS	
SHEET NO.	
DATE	
BY	
PROJECT	
LOCATION	
SCALE	
NO. OF SHEETS	
SHEET NO.	

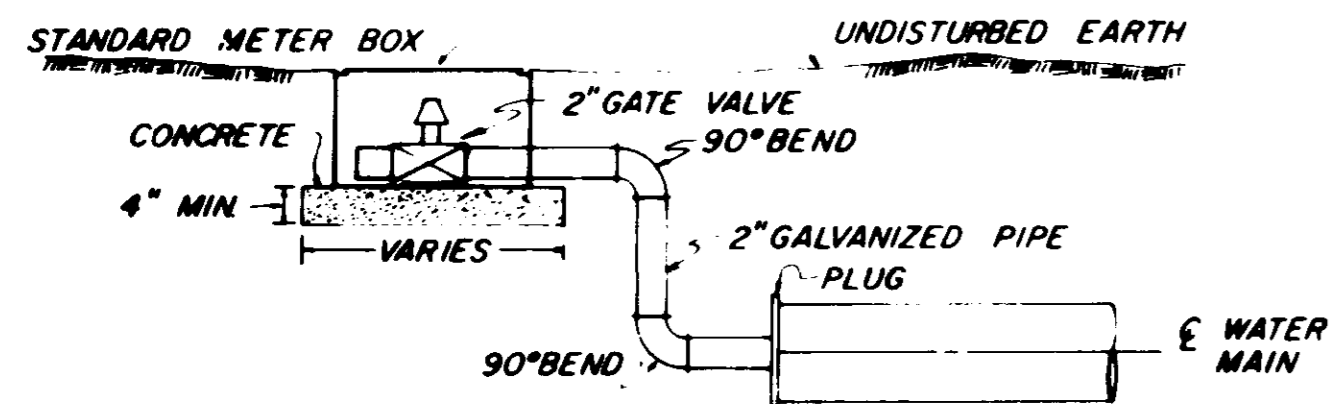
DATE	
BY	
PROJECT	
LOCATION	
SCALE	
NO. OF SHEETS	
SHEET NO.	
DATE	
BY	
PROJECT	
LOCATION	
SCALE	
NO. OF SHEETS	
SHEET NO.	



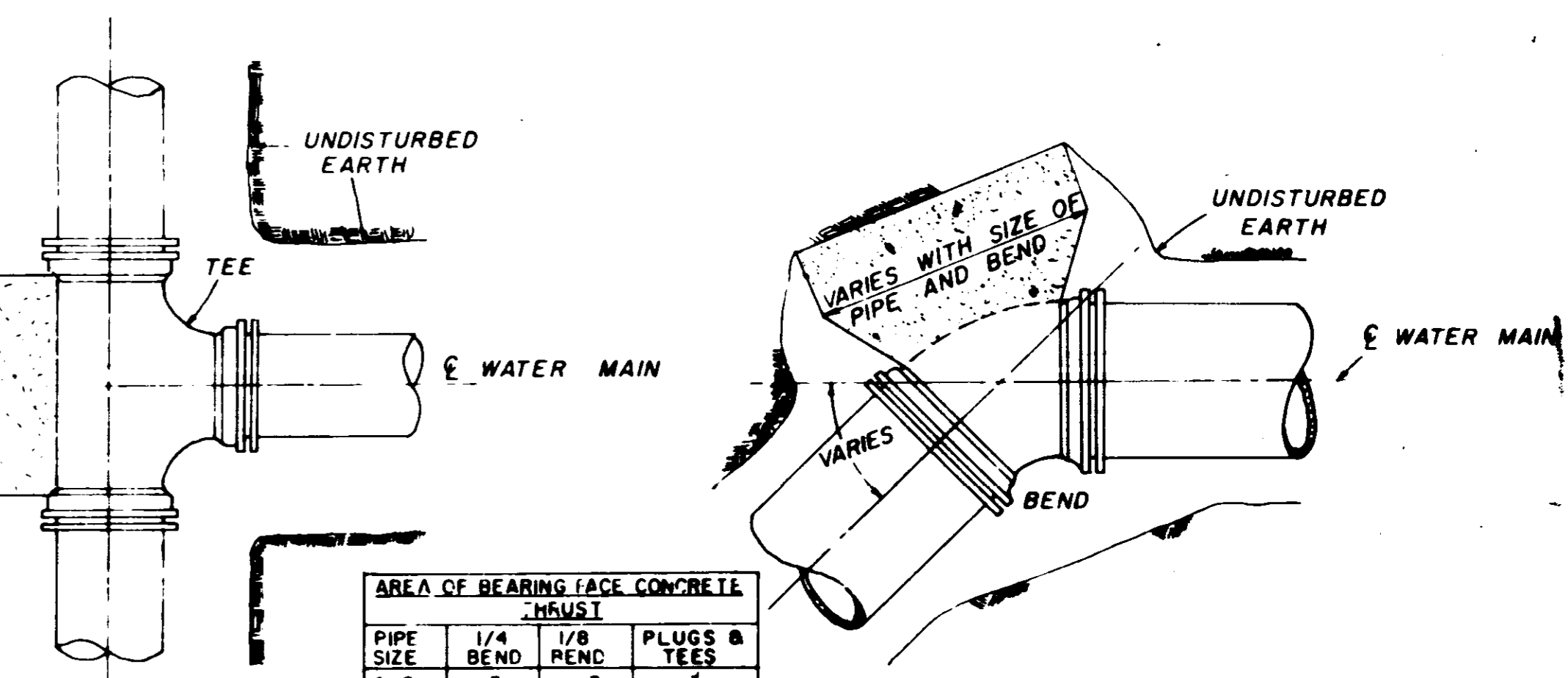


TYPICAL CASED CROSSING

NOTE: COMPENSATION FOR CONCRETE THRUST BLOCKS SHALL BE INCLUDED IN THE UNIT PRICE BID FOR VALVES, FIRE HYDRANTS AND FITTINGS.



TYPICAL 2" BLOW-OFF DETAIL

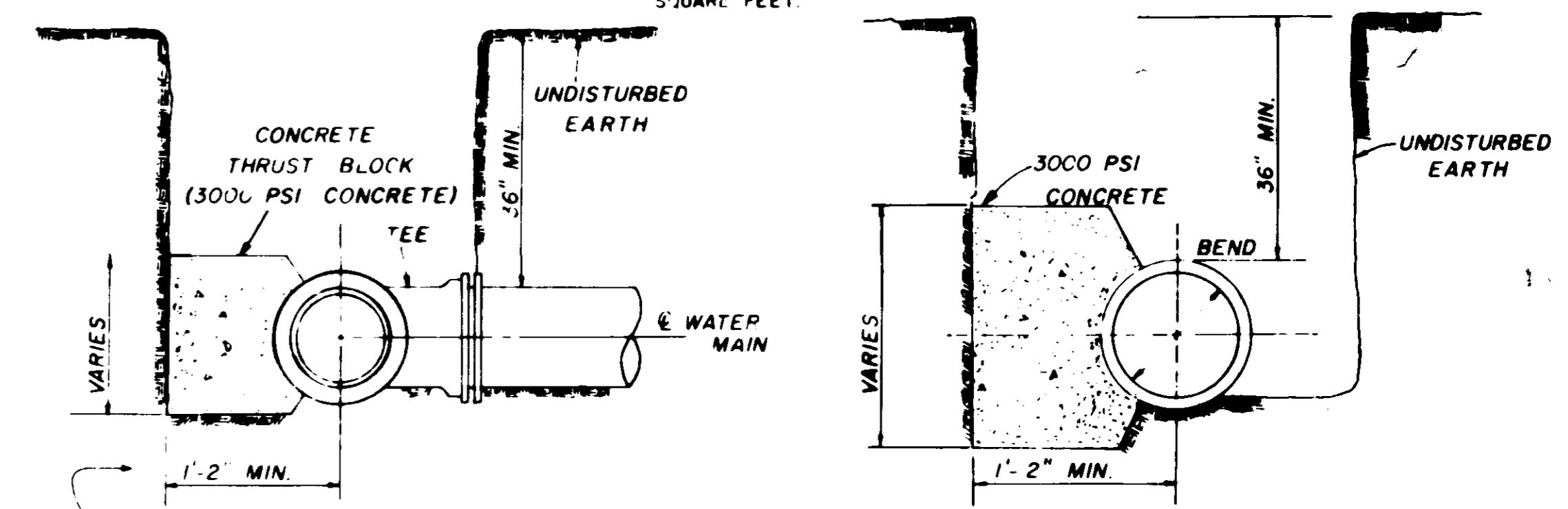


PLAN

PLAN

PIPE SIZE	AREA OF BEARING FACE CONCRETE THRUST		PLUGS & TEES
	1/4 BEND	1/8 BEND	
4-6	3	3	3
8	3	3	3
10	4	3	4
12	6	3	4
16	11	4	7

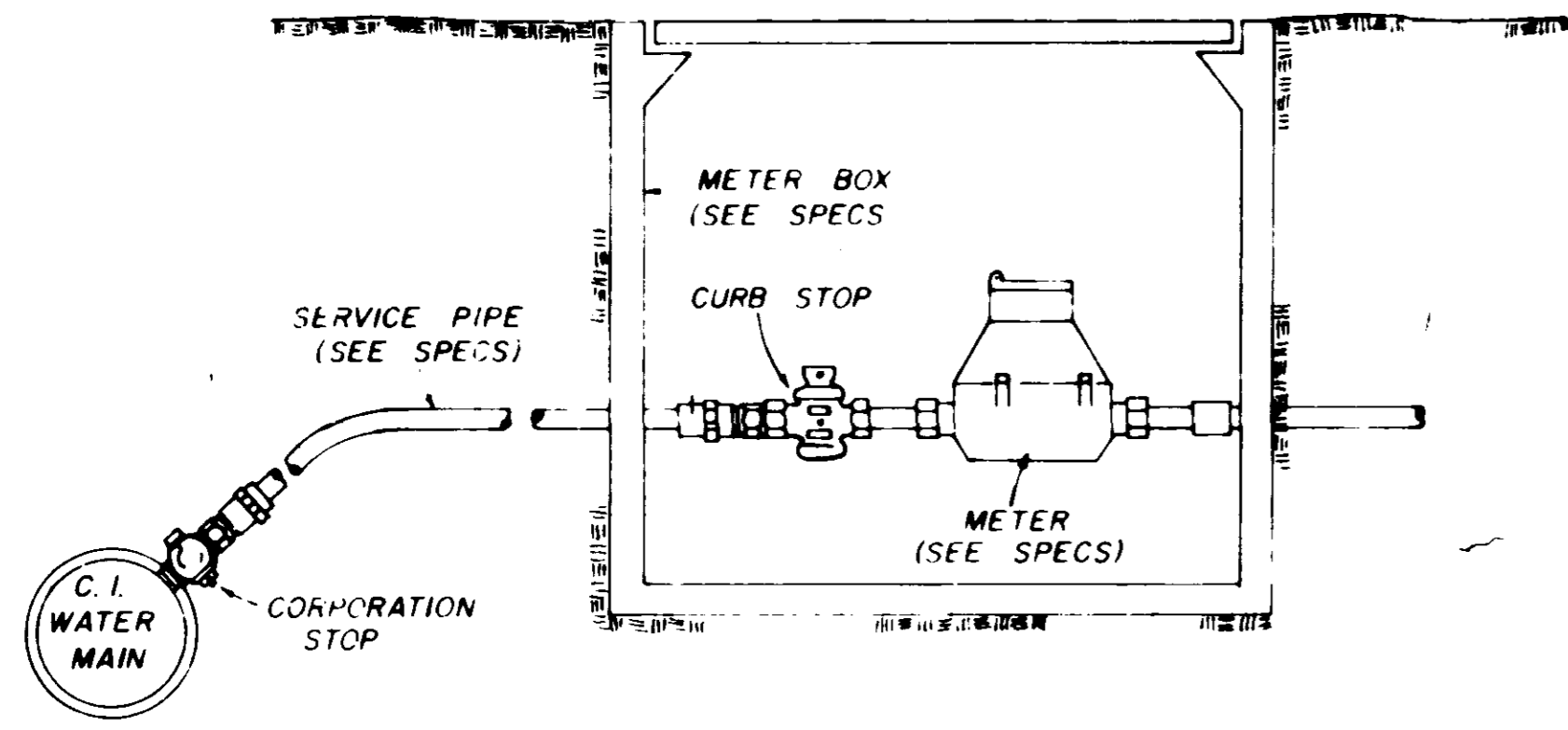
NOTE: AREA OF BEARING FACE IN SQUARE FEET.



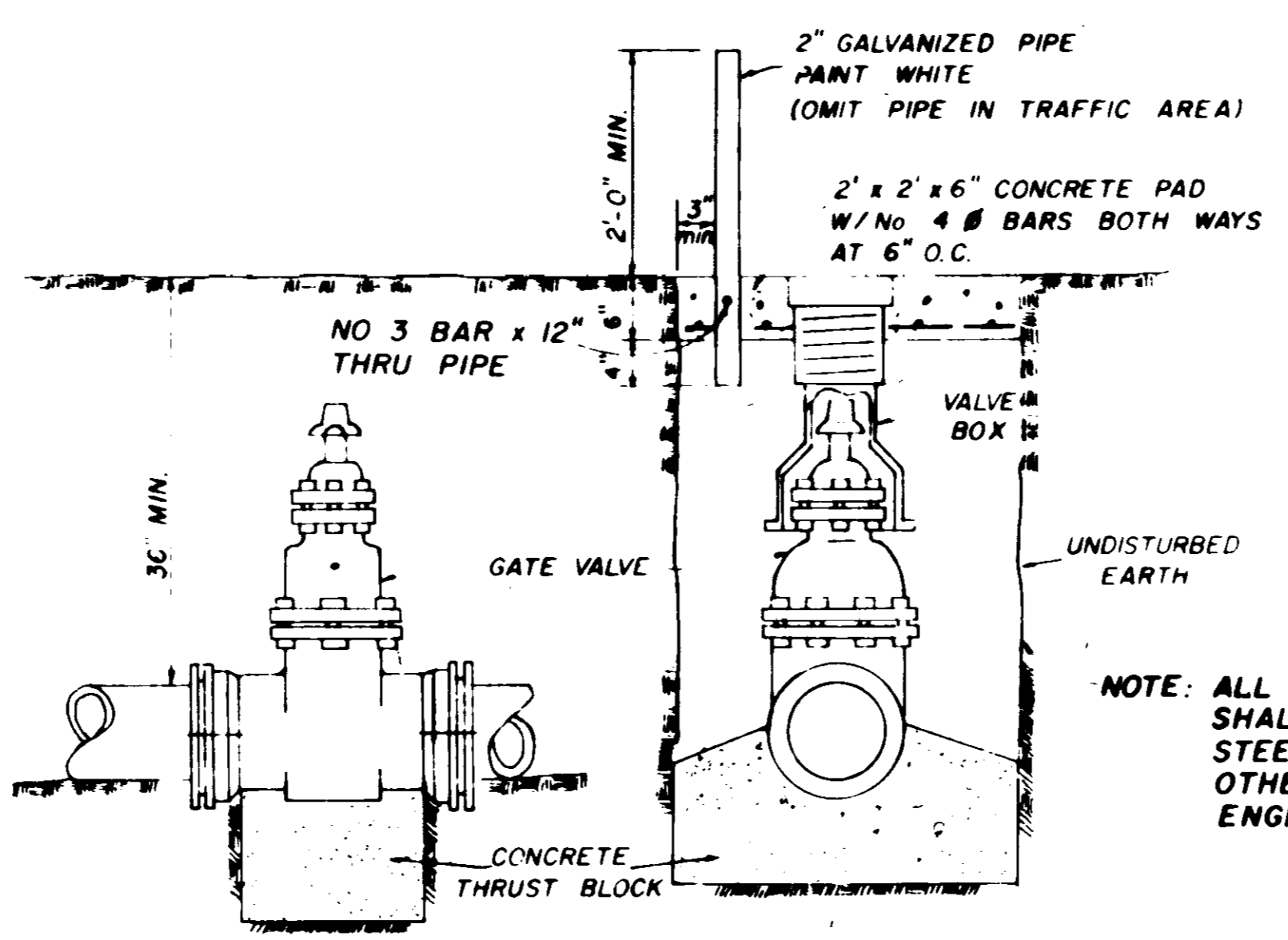
SECTION

SECTION

BLOCKING DETAILS FOR TEES & BENDS



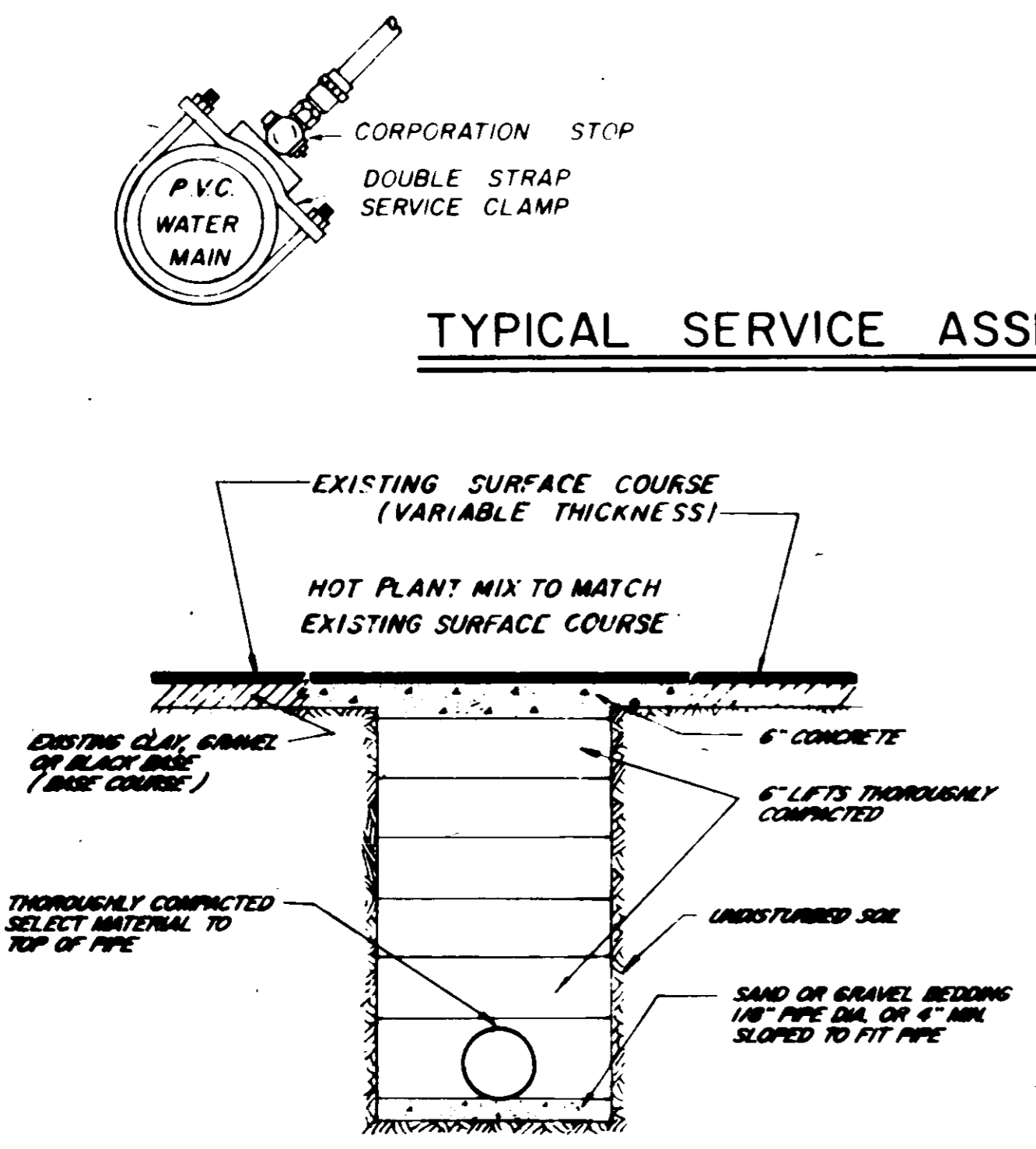
TYPICAL SERVICE ASSEMBLY



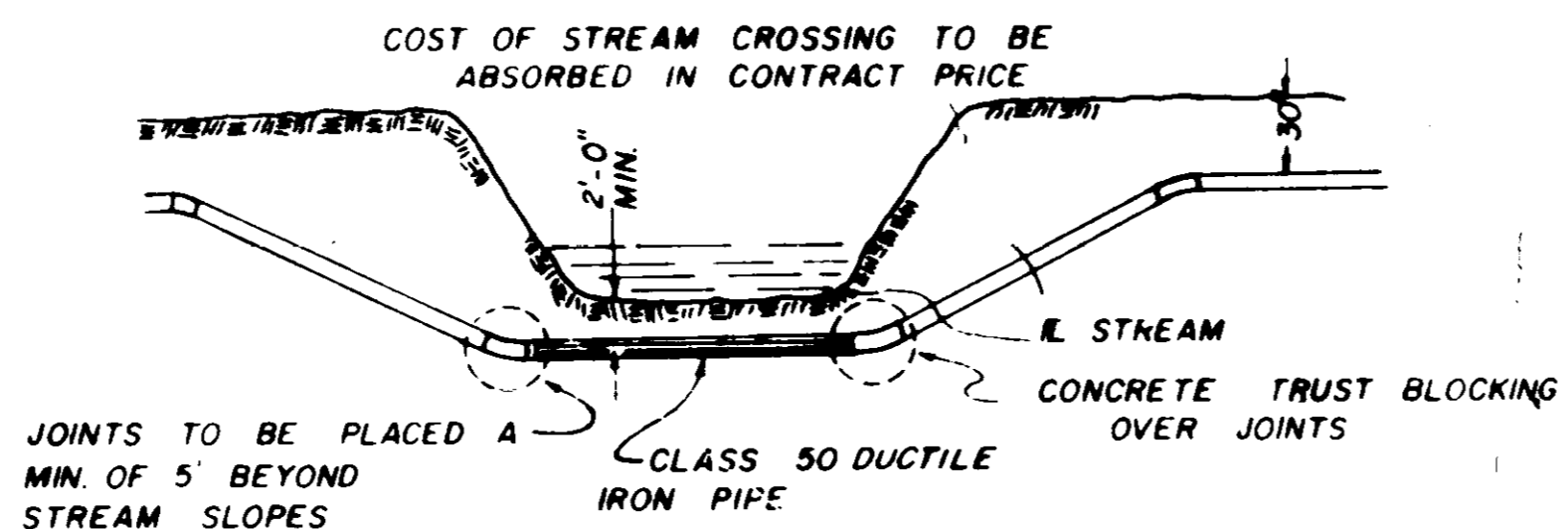
ELEVATION SECTION

TYPICAL VALVE & BOX

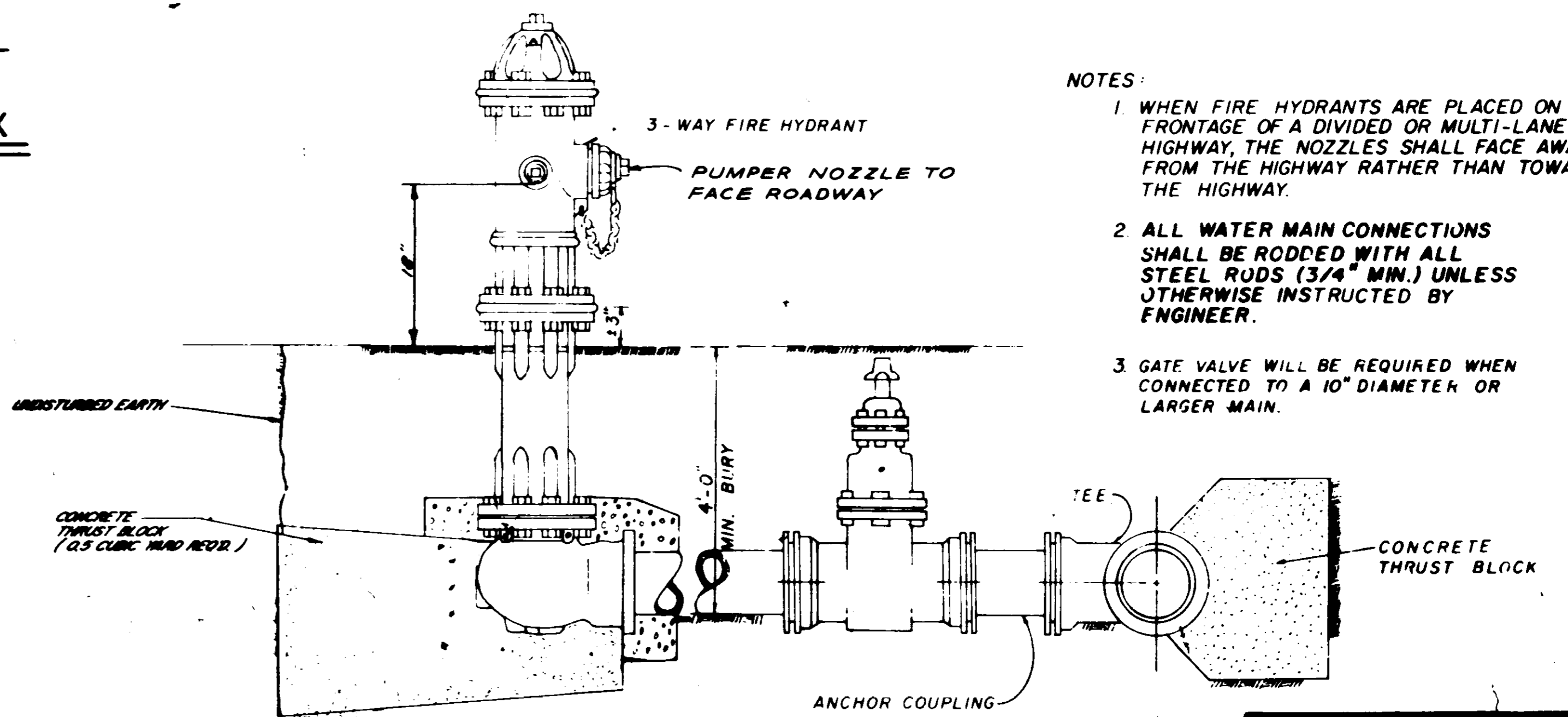
NOTE: ALL WATER MAIN CONNECTIONS SHALL BE RODDED WITH ALL STEEL RODS (3/4" MIN) UNLESS OTHERWISE INSTRUCTED BY ENGINEER.



STREET REPAIR OF OPEN CUT



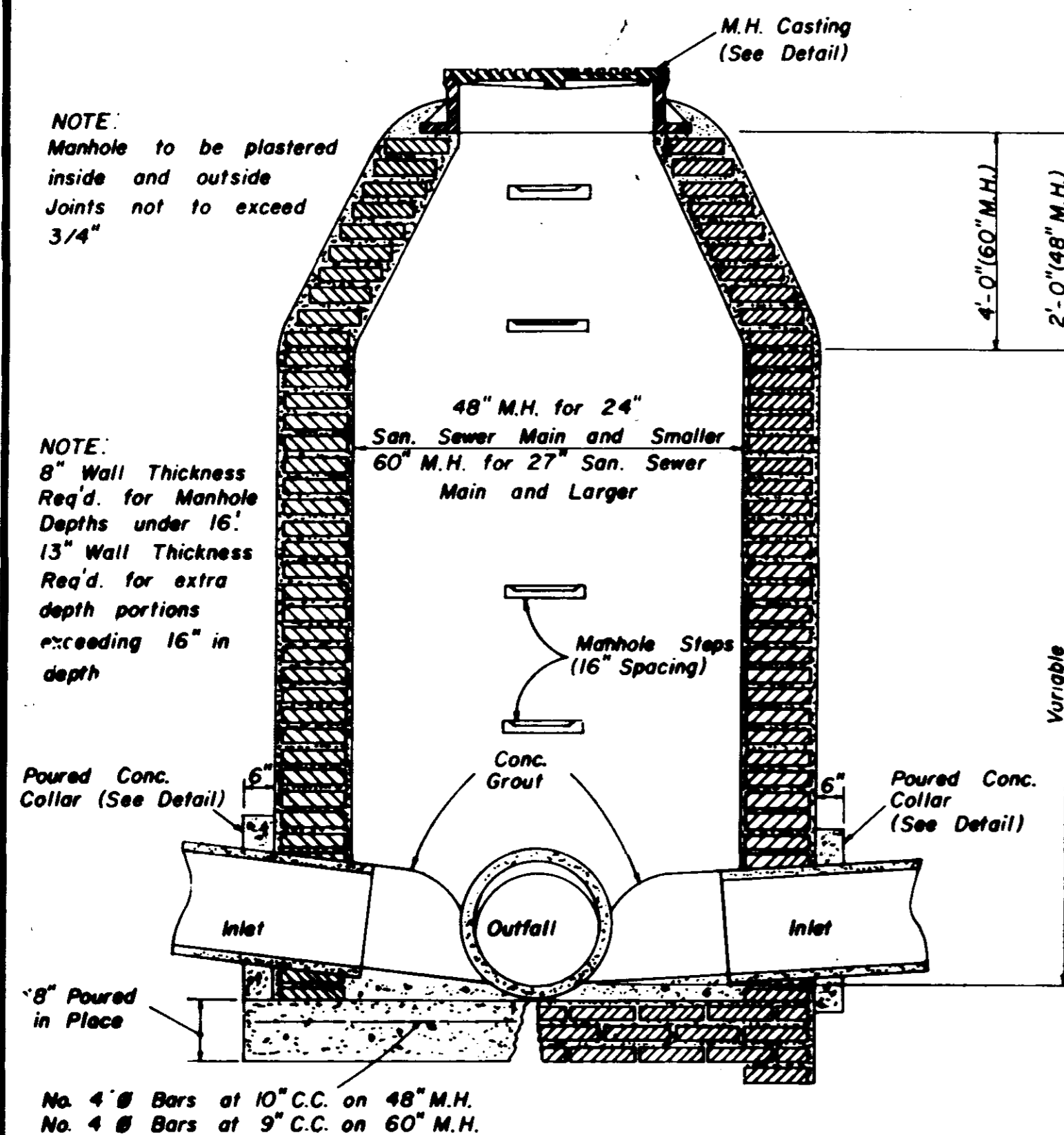
TYPICAL STREAM CROSSING



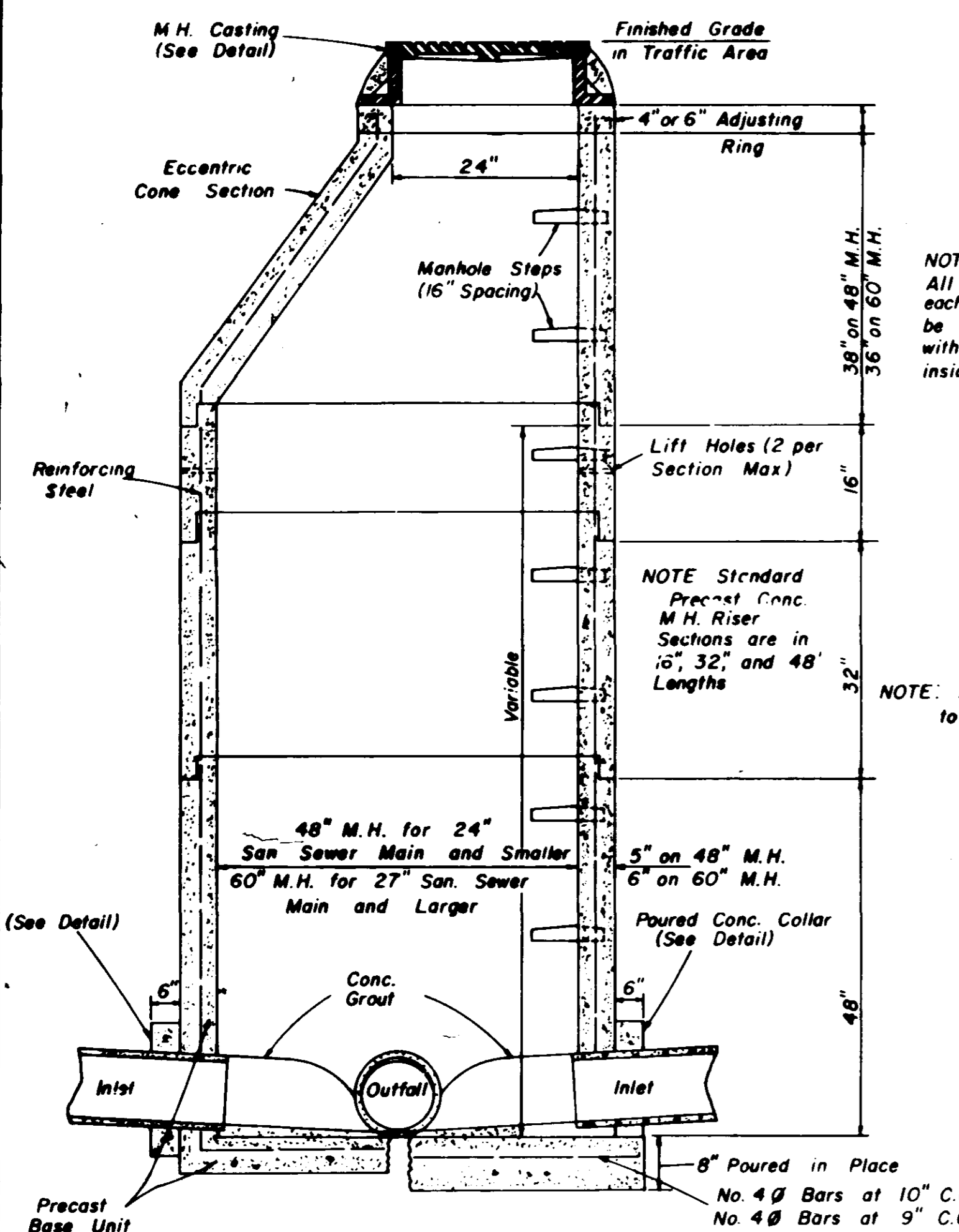
TYPICAL FIRE HYDRANT

- NOTES:
1. WHEN FIRE HYDRANTS ARE PLACED ON THE FRONTAGE OF A DIVIDED OR MULTI-LANE HIGHWAY, THE NOZZLES SHALL FACE AWAY FROM THE HIGHWAY RATHER THAN TOWARD THE HIGHWAY.
 2. ALL WATER MAIN CONNECTIONS SHALL BE RODDED WITH ALL STEEL RODS (3/4" MIN.) UNLESS OTHERWISE INSTRUCTED BY ENGINEER.
 3. GATE VALVE WILL BE REQUIRED WHEN CONNECTED TO A 10" DIAMETER OR LARGER MAIN.

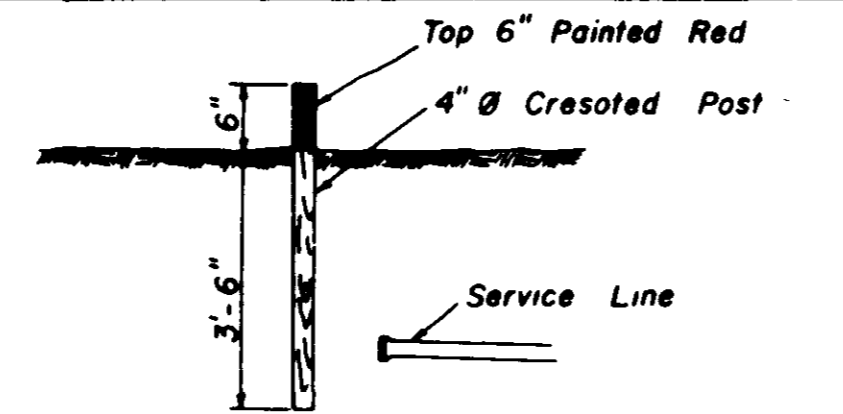
WATER SYSTEM STANDARD DETAILS



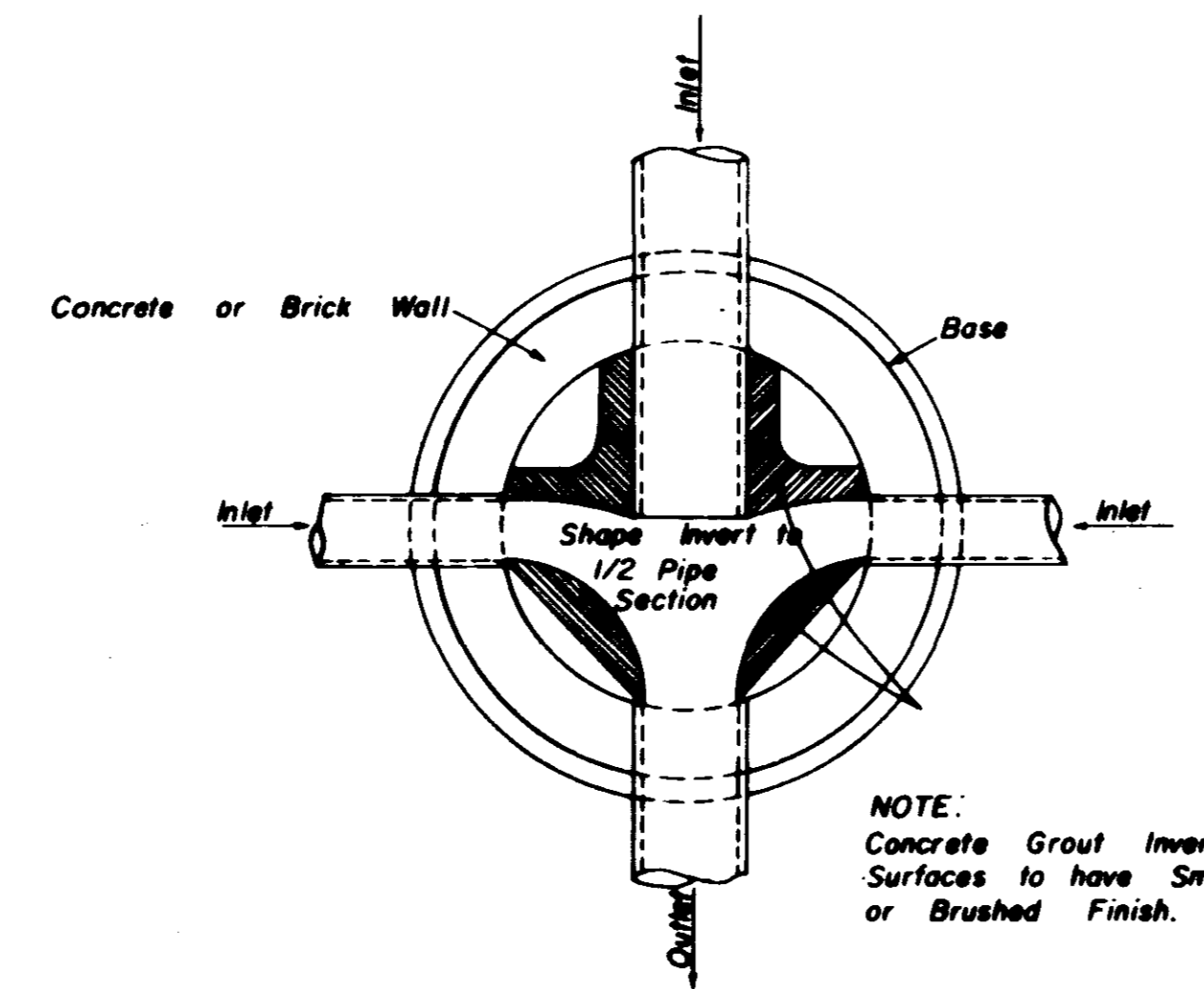
**SECTION
STANDARD BRICK MANHOLE**



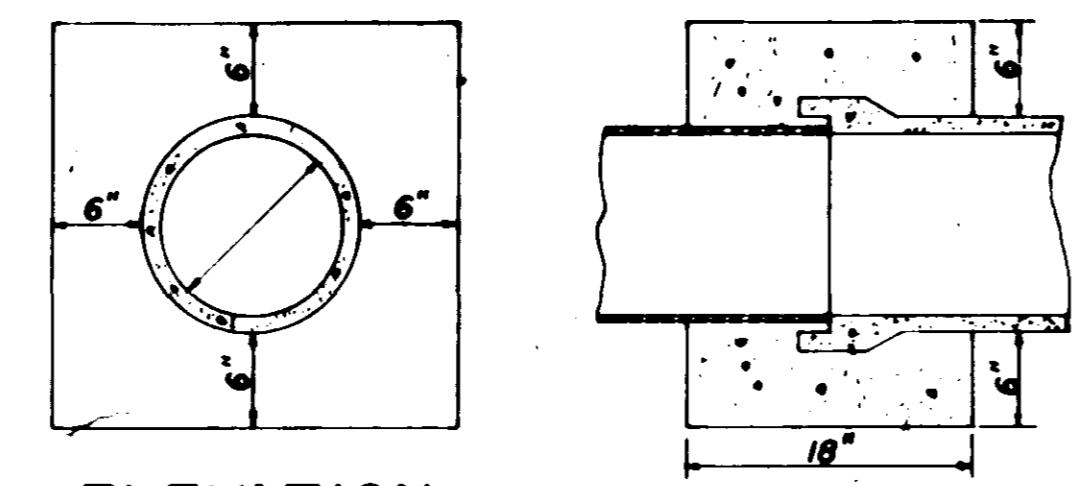
**SECTION
PRECAST CONCRETE MANHOLE**



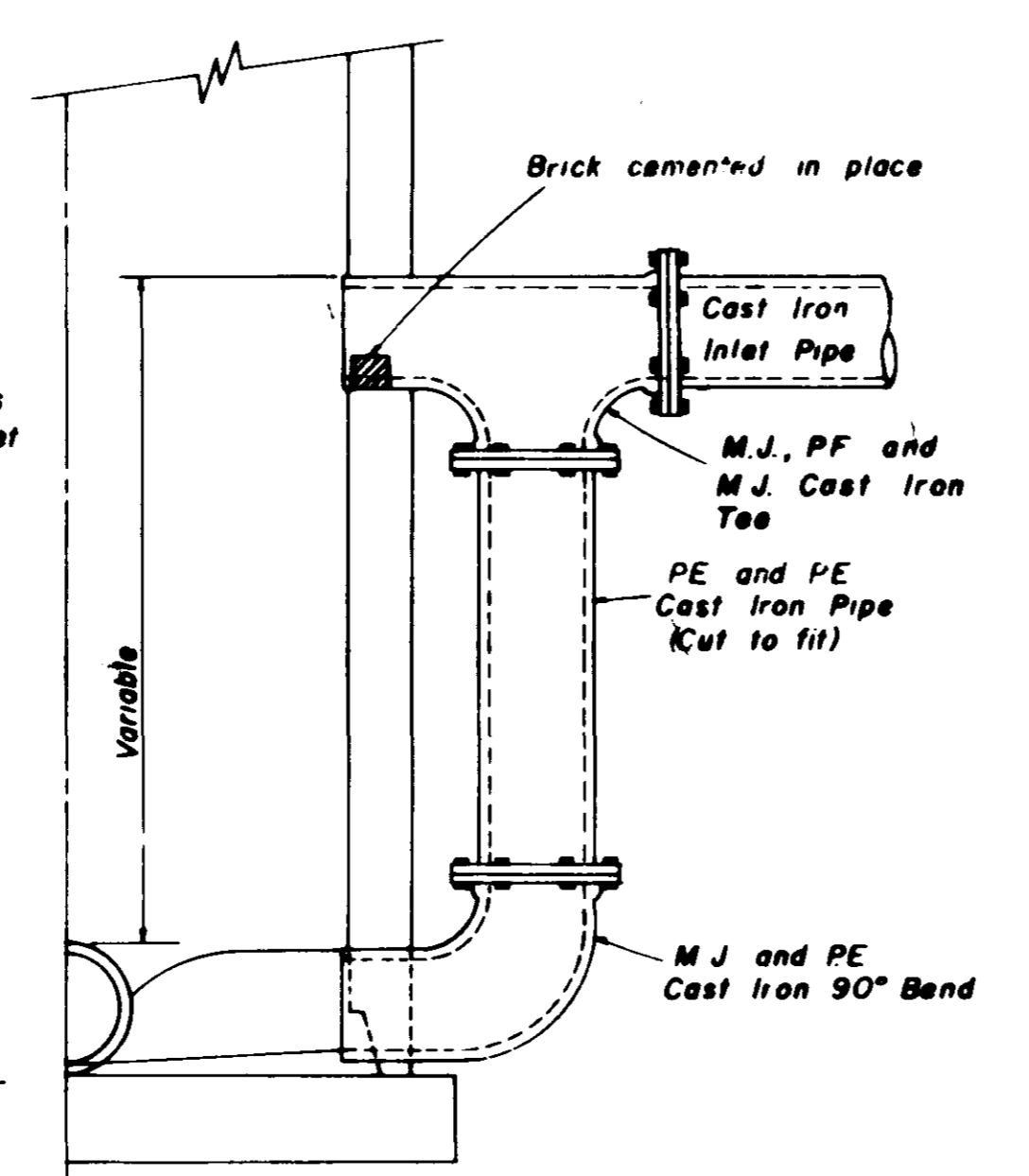
SEWER SERVICE MARKER



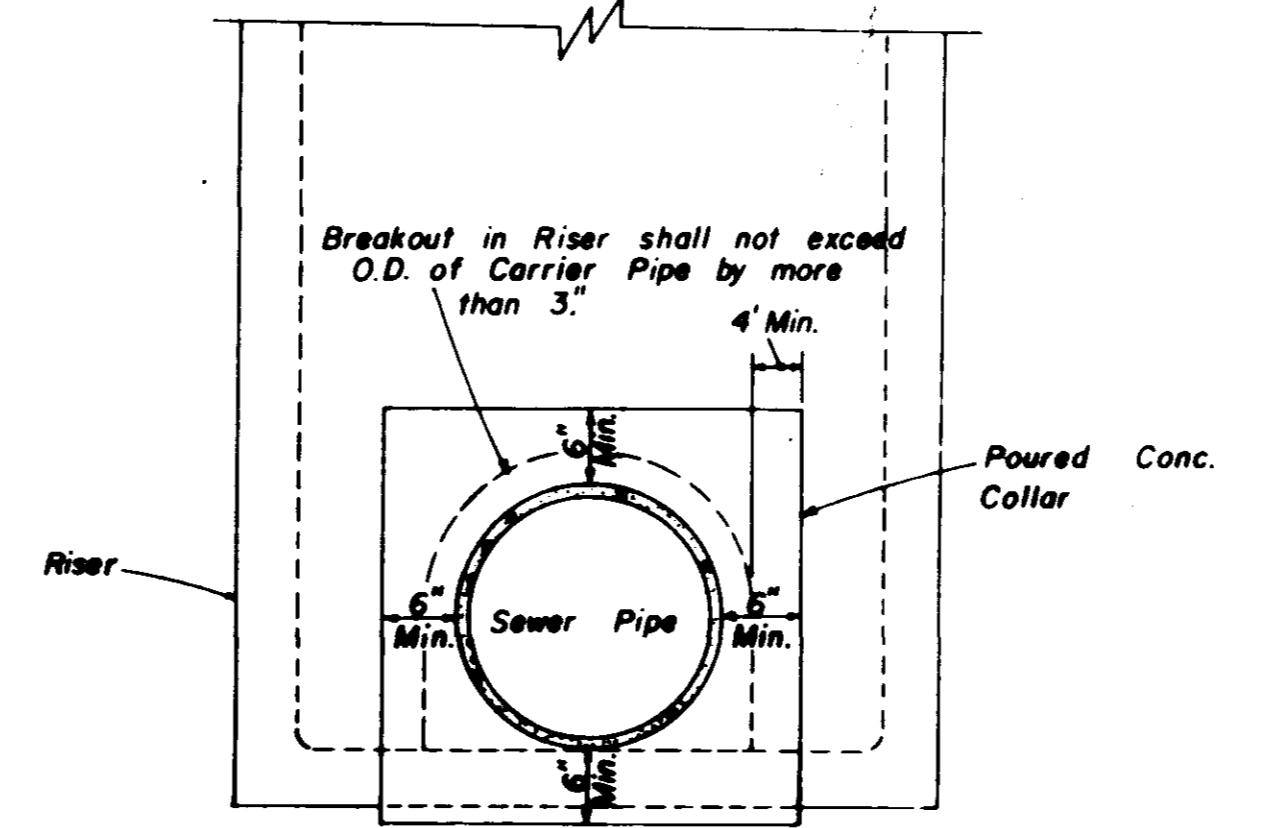
**PLAN OF MANHOLE
FLOW CHANNELS**



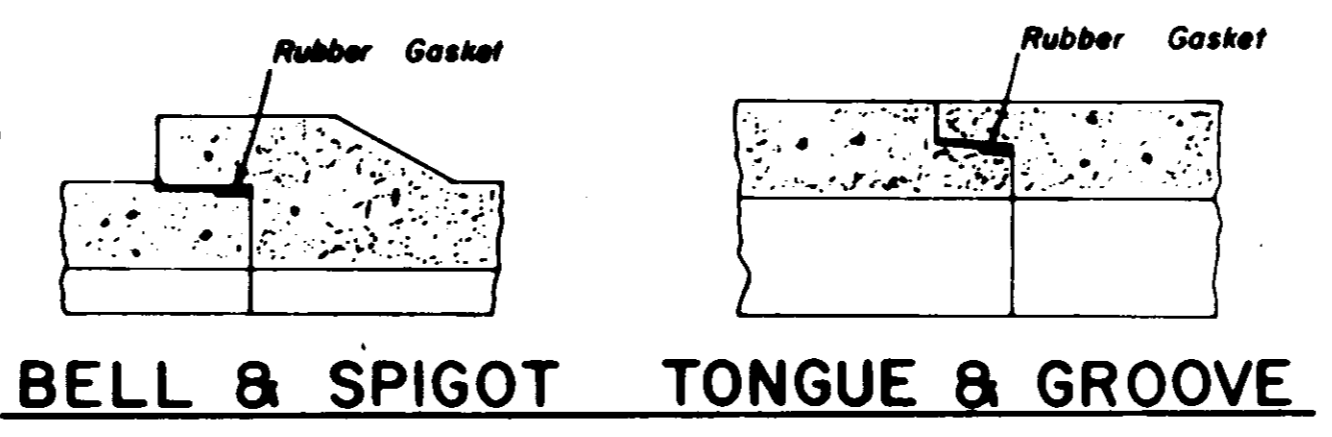
**ELEVATION SECTION
CONCRETE COLLAR DETAILS**



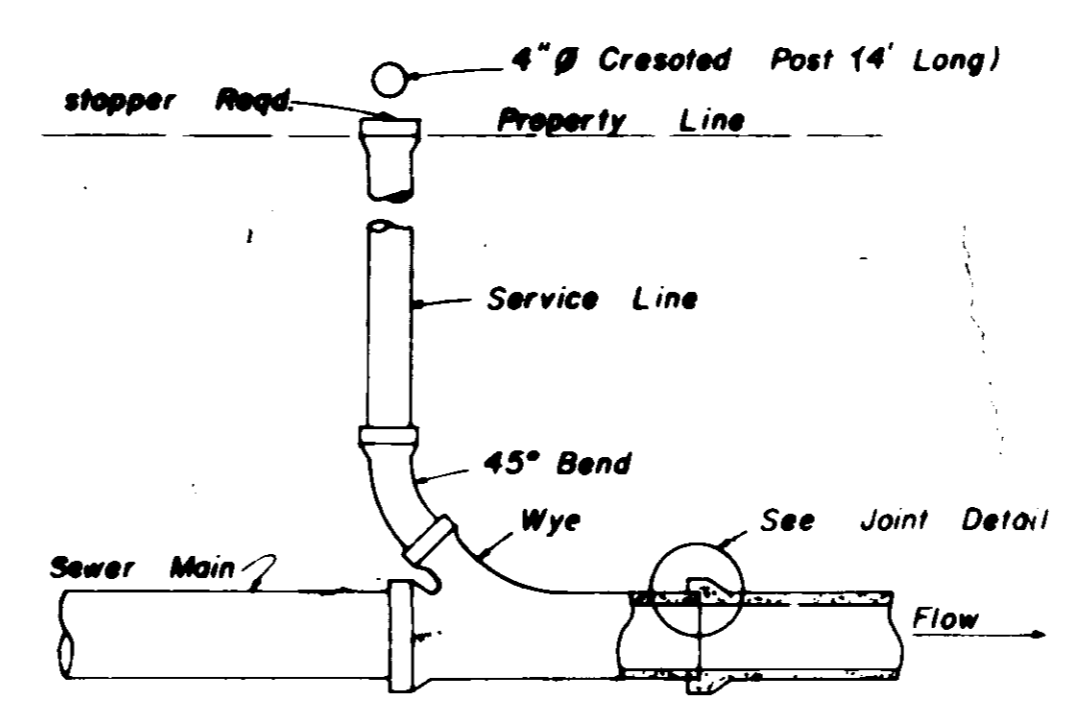
**HALF SECTION
MANHOLE WITH DROP CONNECTION**



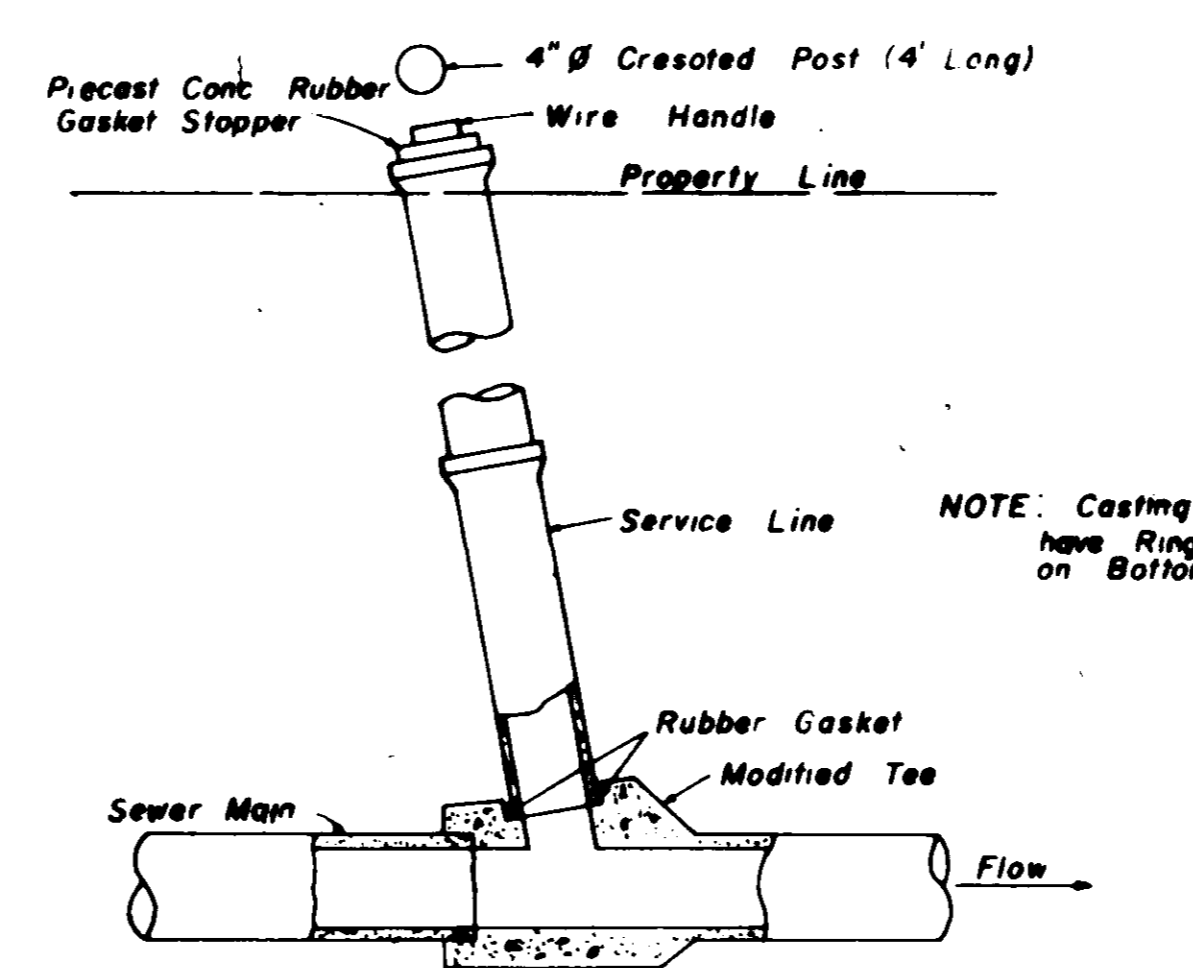
**ELEVATION
CONCRETE COLLAR AT
MANHOLE CONNECTION**



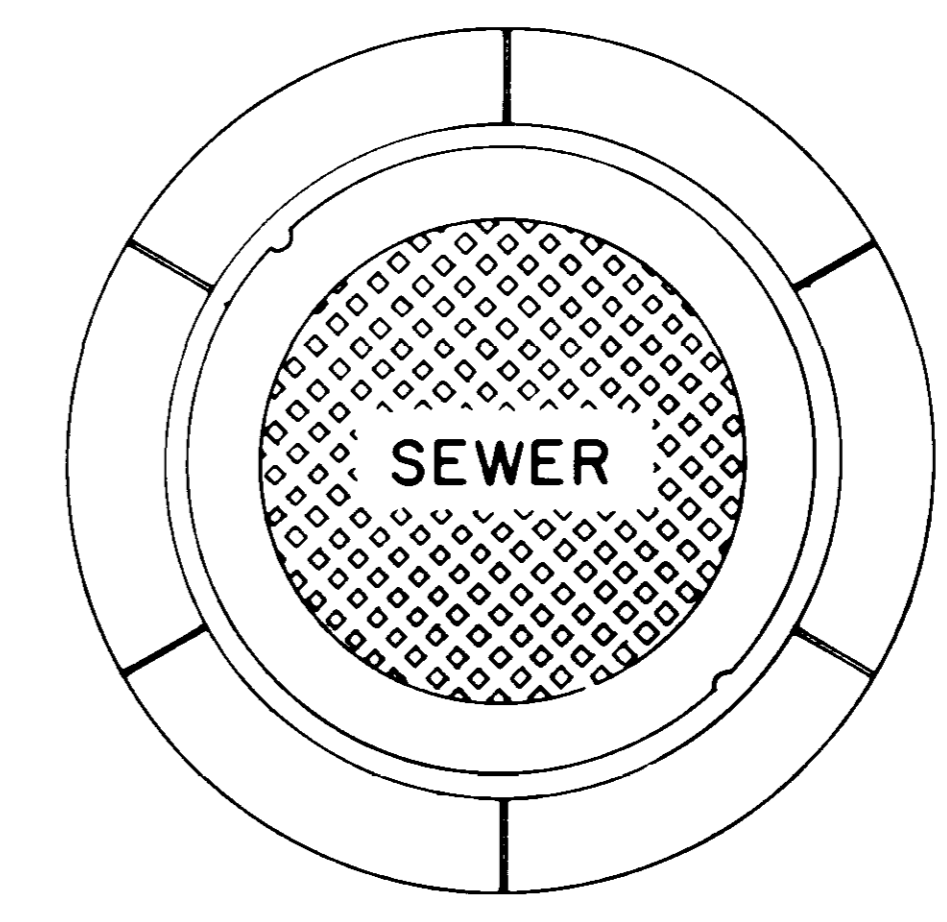
**BELL & SPIGOT TONGUE & GROOVE
JOINT DETAILS**



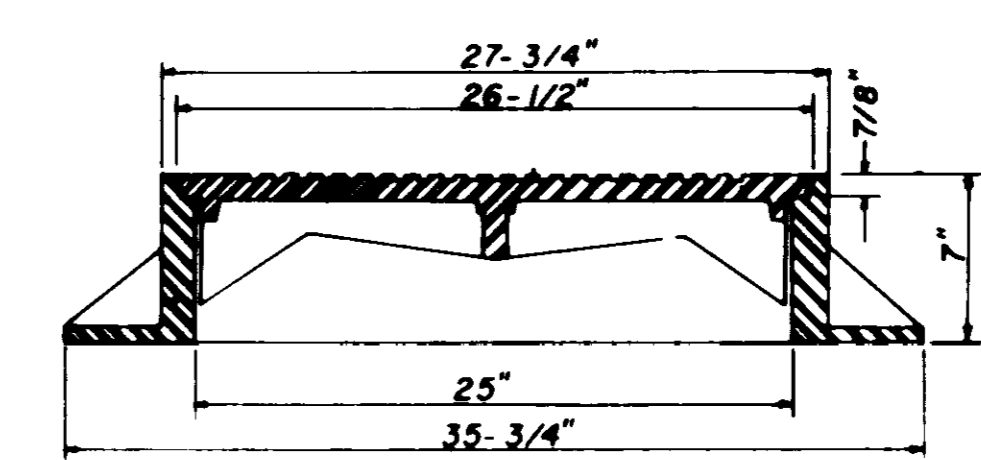
**TYPICAL SERVICE TO PROPERTY LINE
WITH WYE JOINT**



**TYPICAL SERVICE TO PROPERTY LINE
WITH MODIFIED TEE JOINT**

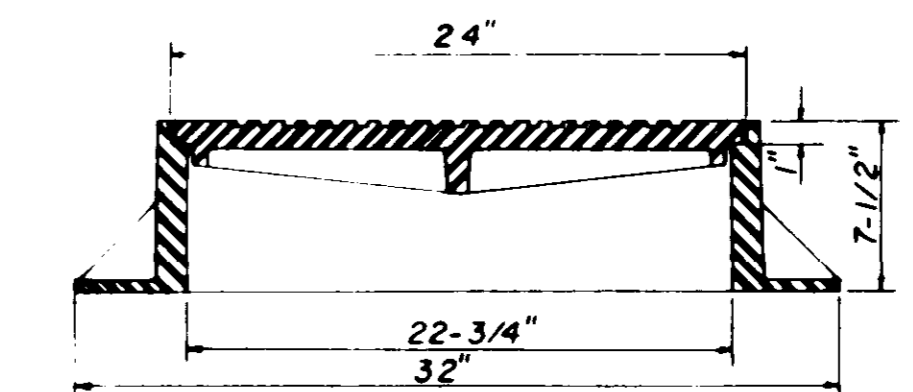


**PLAN
MANHOLE CASTING**



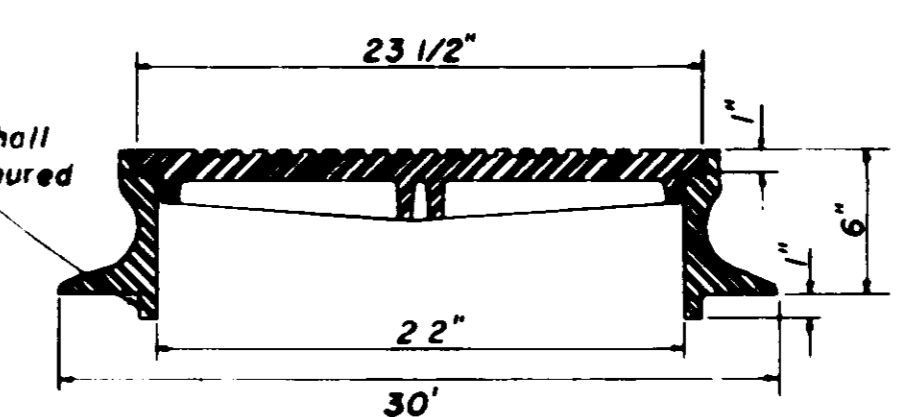
**SECTION
TYPE \"A\" MANHOLE CASTING**

NOTE: 1. Use Type \"A\" Manhole Casting in Street R.O.W.
2. Use Harper No. 2, City of Jackson Standard (420 lbs.) or Vulcan No. VM-15, City of Jackson Standard (420 lbs.)



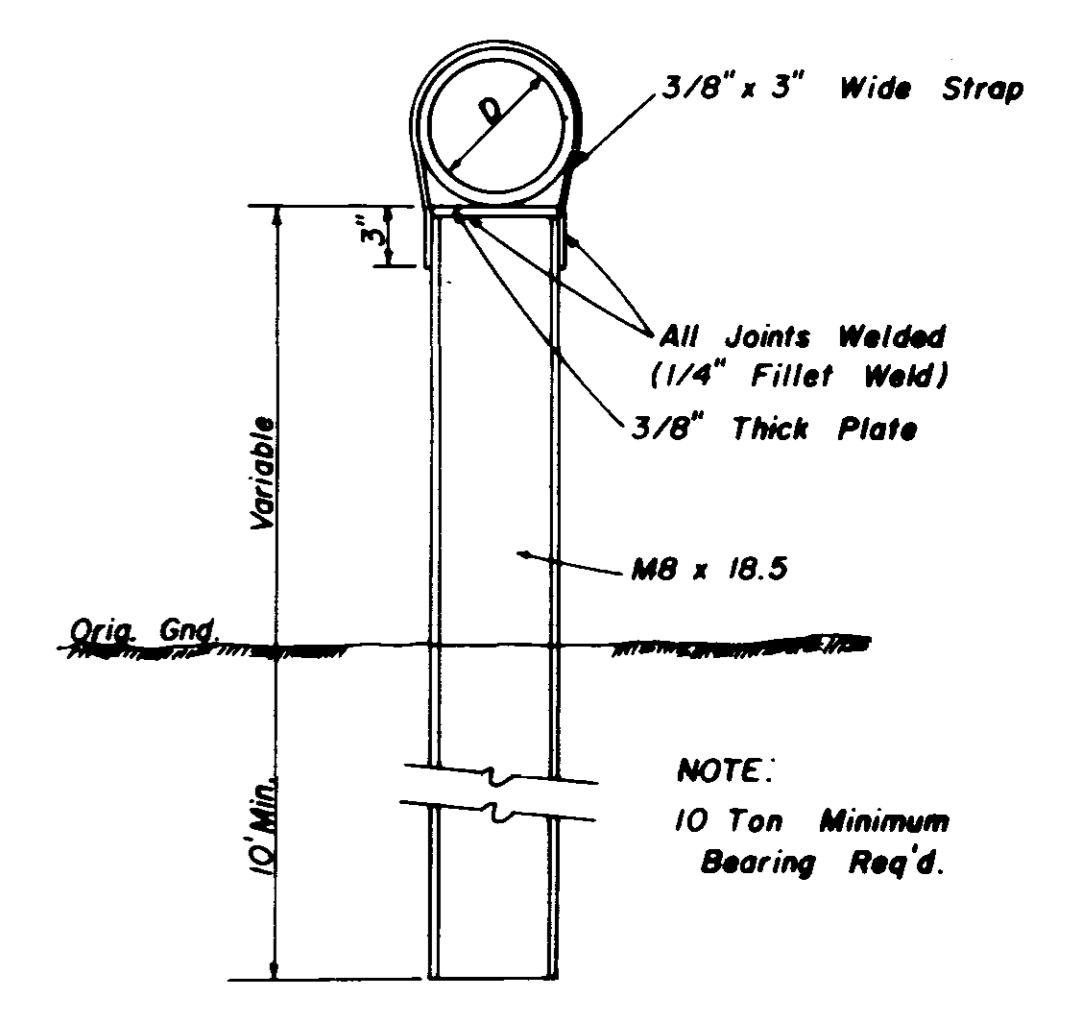
**SECTION
TYPE \"B\" MANHOLE CASTING**

NOTE: 1. Use Type \"B\" Manhole Casting for any Manhole not in a Street R.O.W.
2. Use Harper No. 1 (M.S.P.E. Standard) Light Weight (330 lbs.) or Vulcan No. VM-17 (300 lbs.) or Opelika Foundry No. C-2-1 (325 lbs.)

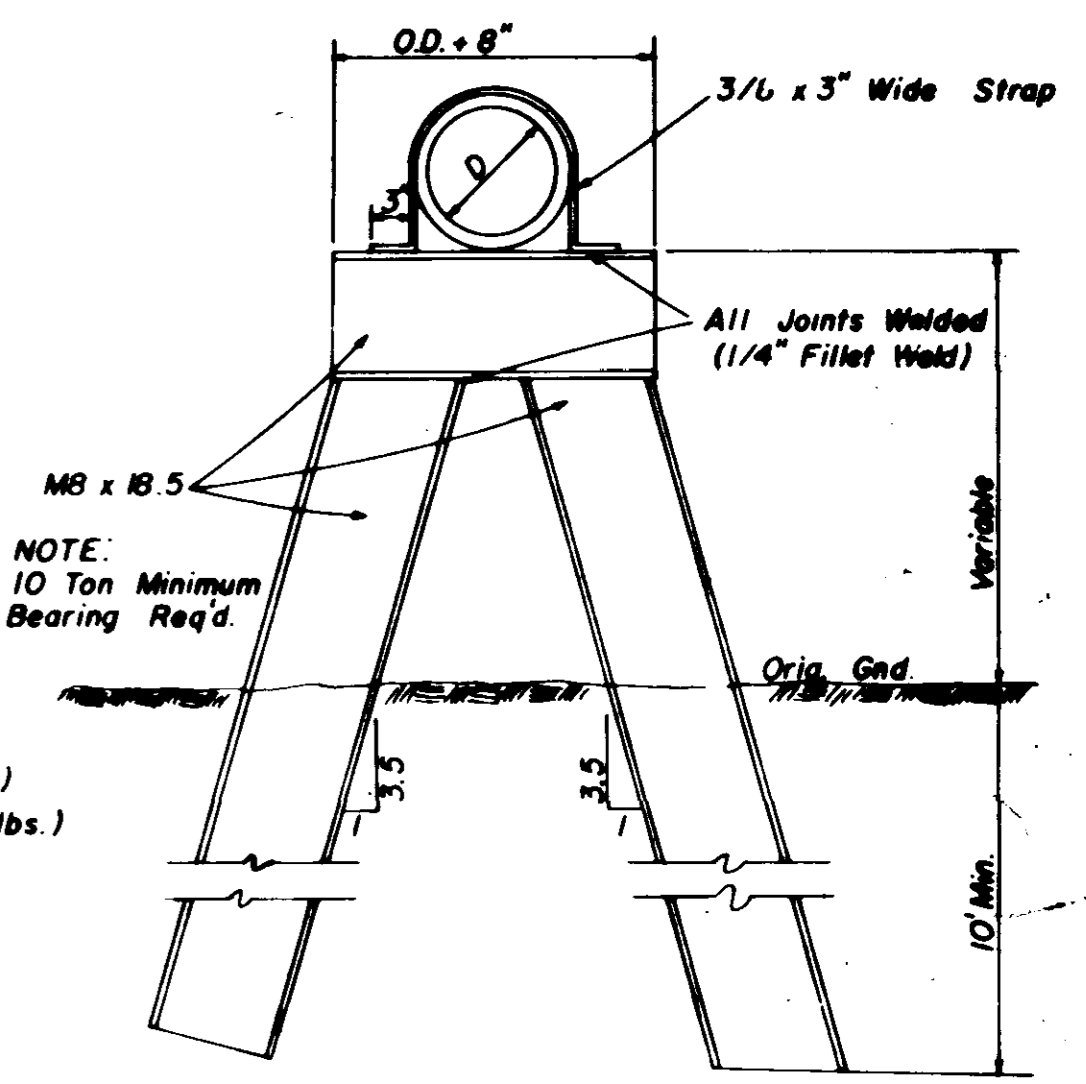


**SECTION
TYPE \"C\" MANHOLE CASTING**

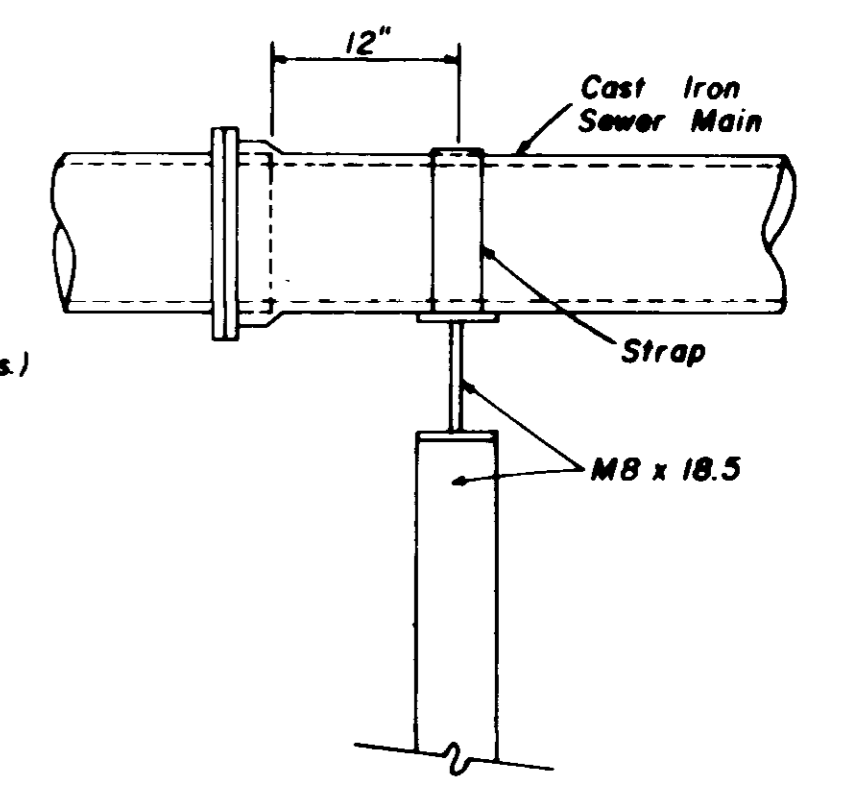
NOTE: 1. Use Type \"C\" Manhole Casting for Precast Manhole not in a Street R.O.W.
2. Use Harper No. 8 (330 lbs.) or Neenah No. R-1779 (300 lbs.) or Vulcan No. VM-7 (330 lbs.)



**DETAIL
TYPE \"A\" PIER**



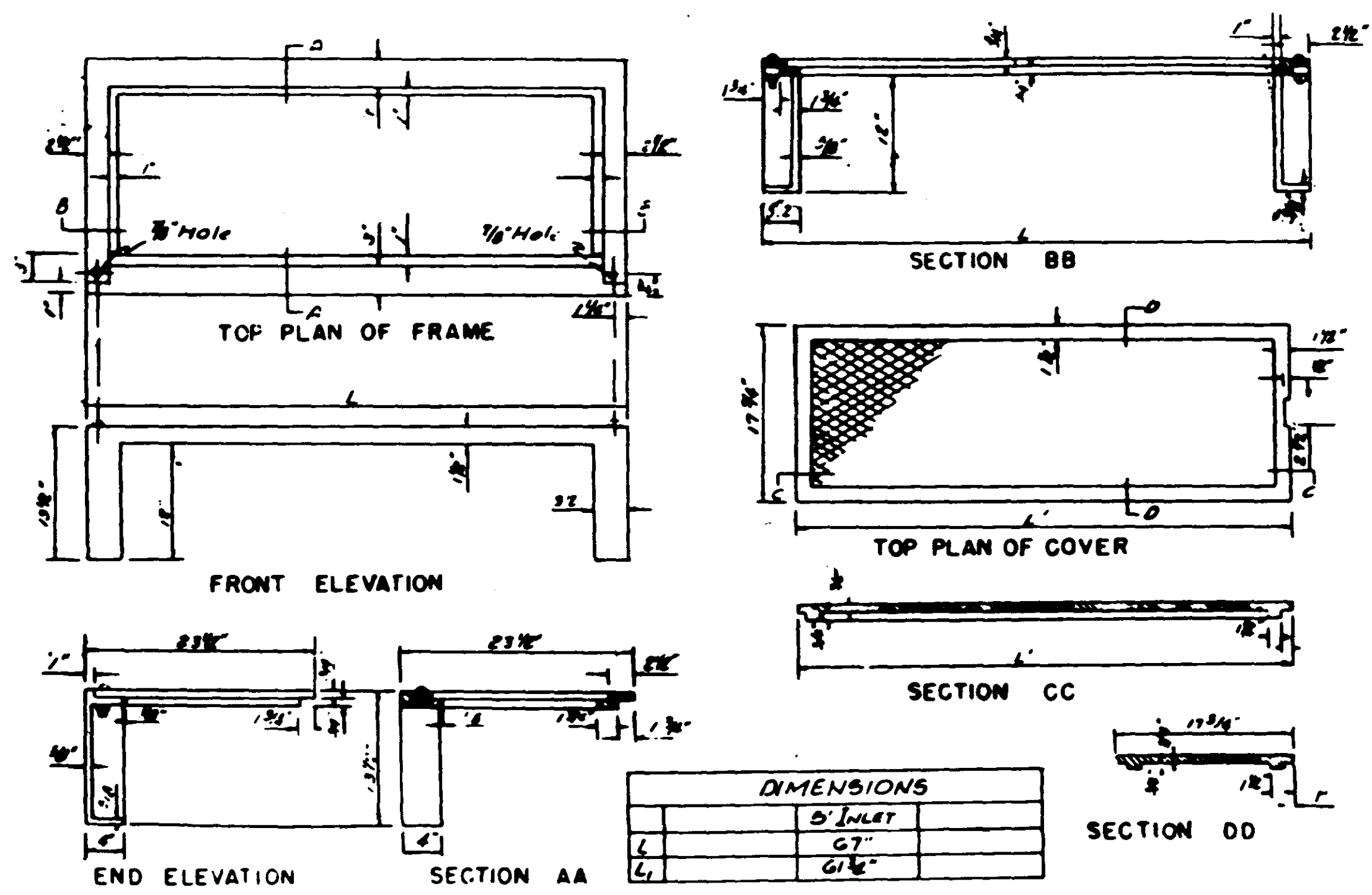
**DETAIL
TYPE \"B\" PIER**



**SIDE ELEVATION
TYPE \"B\" PIER**

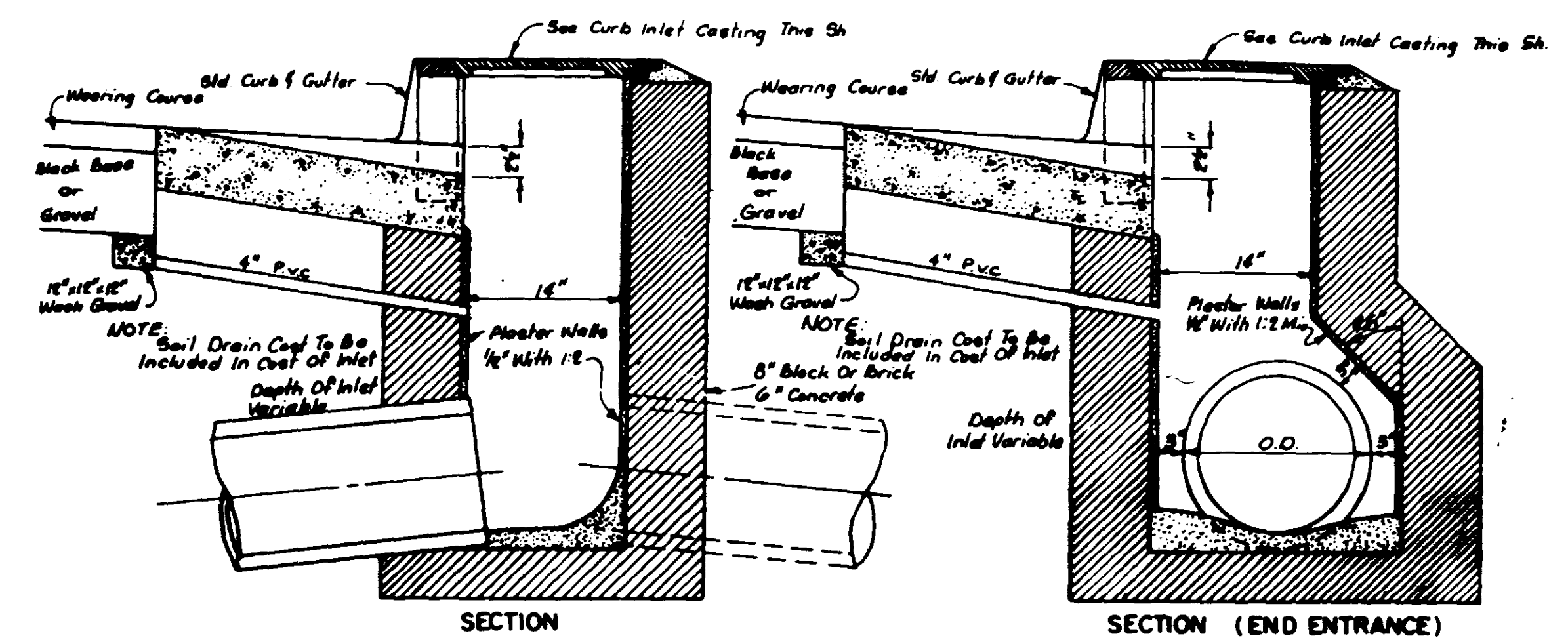
**SANITARY SEWER
STANDARD DETAILS**

BROWNING INC.			
Consulting Engineers		Jackson, Mississippi	
DRAWN BY: J.F.	DATE: MAY, 1993		
CHECKED BY: P.L.B.	SCALE: AS SHOWN	13 OF 15	

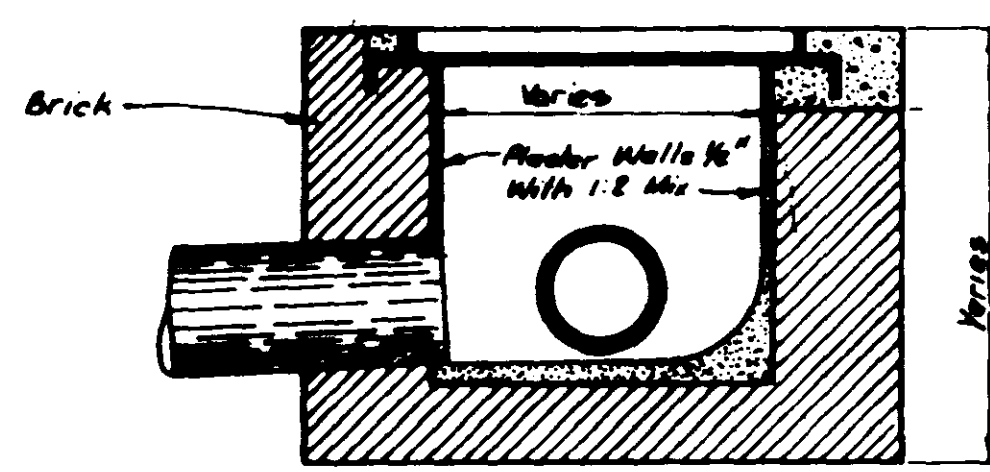


DIMENSIONS	
5" INLET	
67"	
61 1/2"	

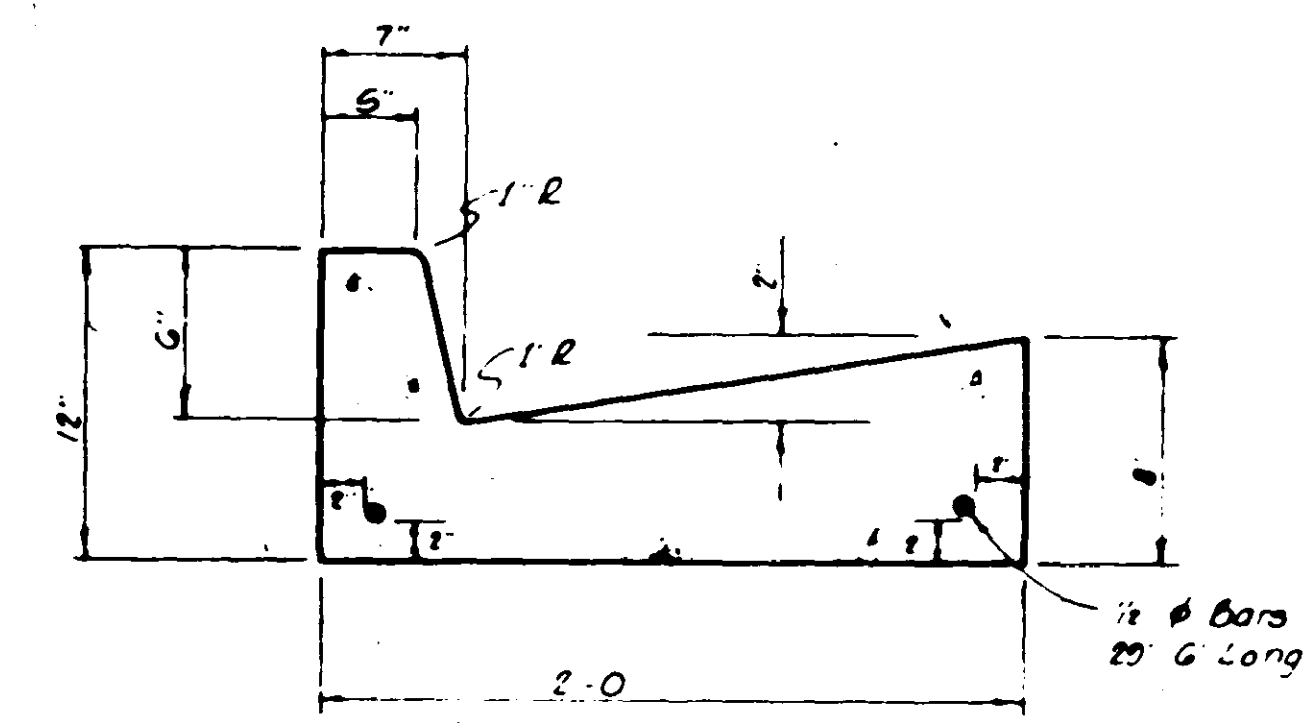
STANDARD CURB INLET CASTING



STANDARD CURB INLET



DROP INLET WITH 24" NON-TRAFFIC OPEN GRATE



STANDARD CURB & GUTTER

NOTE Water Service Connections Shall Be Marked In The Face Of The Curb With A "W" And The Sanitary Sewer Service Connections Shall Be Marked With An "S".

TYPICAL DRAINAGE DETAILS

BROWNING INC.
Consulting Engineers Jackson, Mississippi

Designed By: P.L.B. Scale: None
Drawn By: J.F. Date: MAY, 1993 Sheet 14 of 15

