

SUMMARY OF QUANTITIES (ROADWAY)

| PAY ITEM NO. | PAY ITEMS | UNITS | PHASE I | ADD ALTERNATE | TOTAL |
|---------------------------|-----------------------------------------------------------------------------------------------|----------|----------|---------------|----------|
| 201-A | CLEARING AND GRUBBING | LUMP SUM | LUMP SUM | LUMP SUM | LUMP SUM |
| 202-A | REMOVAL OF OBSTRUCTION (BRIDGE AT STA. 92+23 - 1 @ 19' TIMBER) | LUMP SUM | | LUMP SUM | LUMP SUM |
| 202-A | REMOVAL OF 8' x 4' BOX CULVERT AT STA. 107+85 | LUMP SUM | LUMP SUM | - | LUMP SUM |
| 202-B | REMOVAL OF ASPHALT PAVEMENT | SQ. YDS. | 5520 | 1780 | 7300 |
| 202-B | REMOVAL OF CONCRETE PAVED DITCH | SQ. YDS. | 695 | - | 695 |
| 203-A | UNCLASSIFIED EXCAVATION (ABSORBED HAUL) (PLAN QUANTITY) | CU. YDS. | 4940 | 1952 | 6892 |
| 203-E | BORROW EXCAVATION (CLASS B9-6) (PLAN QUANTITY) | CU. YDS. | 3550 | 850 | 4400 |
| 203-G | EXCESS EXCAVATION (F.M.) | CU. YDS. | 2500 | 500 | 3000 |
| 206-A | STRUCTURE EXCAVATION | CU. YDS. | III | 83 | 194 |
| 212-B | STANDARD GROUND PREPARATION | SQ. YDS. | 19,700 | 3900 | 23,600 |
| 213-A | AGRICULTURAL LIMESTONE | TONS | 12.3 | 2.4 | 14.7 |
| 213-B | COMBINATION FERTILIZER (13-13-13) | TONS | 2.0 | 0.4 | 2.4 |
| 213-C | SUPERPHOSPHATE | TONS | 2.0 | 0.4 | 2.4 |
| 214-A | SEEDING (BERMUDAGRASS) | LBS. | 82 | 16 | 98 |
| 214-A | SEEDING (TALL FESCUE) | LBS. | 31 | 6 | 37 |
| 214-A | SEEDING (CRIMSON CLOVER) | LBS. | 41 | 8 | 49 |
| 215-A | VEGETATIVE MATERIAL FOR MULCH | TONS | 8 | 2 | 10 |
| 216-A | SOLID SODDING | SQ. YDS. | 200 | | 200 |
| 219-A | WATERING | M/GAL. | 4 | | 4 |
| 220-A | INSECT PEST CONTROL | ACRE | 2.0 | 0.4 | 2.4 |
| 221-A | PORTLAND CEMENT CONCRETE PAVED DITCH | CU. YDS. | 49 | | 49 |
| 234-A | TEMPORARY SILT FENCE | LIN. FT. | 1200 | 900 | 2100 |
| 235-A | TEMPORARY EROSION CHECKS | BALES | 40 | 12 | 52 |
| 301-A | PLANT MIX BITUMINOUS BASE COURSE | TONS | 4647 | 895 | 5542 |
| 304-B | GRANULAR MATERIAL (CLASS 5, GROUP C) | TONS | 2315 | 278 | 2593 |
| 307-C | 6" SOIL-LIME-WATER MIXING (A4) (CLASS A) | SQ. YDS. | 13,890 | 2870 | 16,760 |
| 307-D | LIME | TONS | 219 | 45 | 264 |
| 403-B | HOT BITUMINOUS PAVEMENT BINDER COURSE | TONS | 1423 | 250 | 1673 |
| 403-C | HOT BITUMINOUS PAVEMENT SURFACE COURSE | TONS | 1423 | 250 | 1673 |
| 408-A | ASPHALT FOR PRIME COAT (CUT-BACK MC-70) OR (EMULSIFIED EA-1) | GALS. | 900 | 225 | 1125 |
| 601-B | CLASS B STRUCTURAL CONCRETE - MINOR STRUCTURES | CU. YDS. | 67 | 7 | 74 |
| 602-A | REINFORCING STEEL | LBS. | 4065 | 442 | 4507 |
| 603-C-A | 18" REINFORCED CONCRETE PIPE, CLASS III | LIN. FT. | 73 | 90 | 163 |
| 603-C-A | 30" REINFORCED CONCRETE PIPE, CLASS III | LIN. FT. | 57 | - | 57 |
| 603-C-A | 36" REINFORCED CONCRETE PIPE, CLASS III | LIN. FT. | 84 | - | 84 |
| 603-C-A | 42" REINFORCED CONCRETE PIPE, CLASS III | LIN. FT. | 64 | - | 64 |
| 603-C-E | 58" x 36" REINFORCED CONCRETE ARCH PIPE, CLASS AIII | LIN. FT. | 28 | - | 28 |
| 603-C-E | 73" x 45" REINFORCED CONCRETE ARCH PIPE, CLASS AIII | LIN. FT. | 4 | - | 4 |
| 603-C-A OR 907-603-P-E | 18" REINFORCED CONCRETE PIPE, CLASS III OR 18" HIGH DENSITY POLYETHYLENE PIPE (ASTM F-894) | LIN. FT. | 1708 | 556 | 2264 |
| 603-C-A OR 907-603-P-E | 24" REINFORCED CONCRETE PIPE, CLASS III OR 24" HIGH DENSITY POLYETHYLENE PIPE (ASTM F-894) | LIN. FT. | 2953 | - | 2953 |
| 603-C-B | 18" REINFORCED CONCRETE END SECTION | EACH | 2 | 1 | 3 |
| 603-C-B | 30" REINFORCED CONCRETE END SECTION | EACH | 2 | - | 2 |
| 603-C-F | 58" x 36" REINFORCED CONCRETE ARCH END SECTION | EACH | 1 | - | 1 |
| 603-C-F | 73" x 45" REINFORCED CONCRETE ARCH END SECTION | EACH | 1 | - | 1 |
| 604-A | CASTINGS | LBS. | 16,256 | 3048 | 19,304 |
| 605-P | 6" NON-PERFORATED SEWER PIPE FOR UNDERDRAINS (SDR 23.5) | LIN. FT. | 52 | - | 52 |

①

②

① ALSO INCLUDES EASEMENTS

② ESTIMATED FOR UNDERCUTTING UNSTABLE AREAS AS DIRECTED BY THE ENGINEER, TO BE DISPOSED OF BY THE CONTRACTOR OFF THE R.O.W.

CITY OF RIDGELAND
STEED ROAD

SUMMARY OF QUANTITIES

| | | | | | | |
|------|----------|----------|--------|---------|--------|-------------------------------|
| | | | | | | WORKING NUMBER SQ-1 |
| DATE | DESIGNED | DETAILED | TRACED | CHECKED | ISSUED | DATE |
| | | | | | | SHEET NUMBER 6 |

PWP-01915

SUMMARY OF QUANTITIES (ROADWAY)

| PAY ITEM NO. | PAY ITEMS | UNITS | PHASE I | ADD ALTERNATE | TOTAL |
|-----------------------------------------|-----------------------------------------------------------------|----------|---------|---------------|--------|
| ALTERNATE #1 (BOX CULVERTS) | | | | | |
| - ALTERNATE #1 (CAST-IN-PLACE) - | | | | | |
| 601-A | CLASS "B" STRUCTURAL CONCRETE | CU. YDS. | 181 | - | 181 |
| 602-A | REINFORCING STEEL | LBS. | 25,806 | - | 25,806 |
| - ALTERNATE #2 (PRECAST) - | | | | | |
| 603-P-A | 8' x 6' PRECAST CONCRETE BOX CULVERT | LIN. FT. | 100 | - | 100 |
| 603-P-A | 8' x 8' PRECAST CONCRETE BOX CULVERT | LIN. FT. | 68 | - | 68 |
| 603-P-B | 8' x 6' PRECAST CONCRETE BOX CULVERT END SECTION | EACH | 2 | - | 2 |
| 603-P-B | 8' x 8' PRECAST CONCRETE BOX CULVERT END SECTION | EACH | 2 | - | 2 |
| WATER LINE ITEMS | | | | | |
| 907-910-1 | 8-INCH RESTRAINED JOINT DUCTILE IRON PIPE, INSTALLED IN CASING | LIN. FT. | 110 | - | 110 |
| 907-910-2 | 12-INCH C900 PVC PIPE, INCLUDING EXCAVATION AND BACKFILL | LIN. FT. | 2375 | - | 2375 |
| 907-910-3 | 12-INCH RESTRAINED JOINT DUCTILE IRON PIPE, INSTALLED IN CASING | | 350 | - | 350 |
| 907-910-4 | 12-INCH STEEL CASING (TRENCH) | LIN. FT. | 90 | - | 90 |
| 907-910-5 | 20-INCH STEEL CASING (BORED) | LIN. FT. | 192 | - | 192 |
| 907-910-6 | 20-INCH STEEL CASING (TRENCH) | LIN. FT. | 90 | - | 90 |
| 907-910-7 | 8-INCH GATE VALVE AND BOX | EACH | 1 | - | 1 |
| 907-910-8 | 12-INCH GATE VALVE AND BOX | EACH | 3 | - | 3 |
| 907-910-9 | FIRE HYDRANT WITH VALVE | EACH | 4 | - | 4 |
| 907-910-10 | REMOVE AND RESET FIRE HYDRANT | EACH | 1 | - | 1 |
| 907-910-11 | FITTINGS AND SPECIALS | LBS. | 3980 | - | 3980 |
| 907-910-12 | 12" HOT TAP INCLUDING TAPPING SLEEVE, TAPPING VALVE, AND STOP | EACH | 12 | - | 12 |
| 907-910-13 | 12" CAP WITH MEGALUG | EACH | 5 | - | 5 |
| 907-910-14 | 8" FORCE MAIN RELOCATION | LIN. FT. | 500 | - | 500 |
| ADD ALTERNATE | | | | | |
| 608-B | CONCRETE SIDEWALK (WITH REINFORCEMENT) | SQ. YDS. | 1840 | 389 | 2229 |
| 908-668-A | UTILITY CONDUIT (UNDERGROUND) (TYPE IV POLYVINYL CHLORIDE) (4") | LIN. FT. | 9832 | 2400 | 12,232 |

CITY OF RIDGELAND
STEED ROAD

SUMMARY OF QUANTITIES

REVISIONS

DATE DESIGNED _____ DETAILED _____ TRACED _____
CHECKED _____ ISSUED _____ DATE _____

WORKING NUMBER
SQ-3

SHEET NUMBER
8

MADISON HILLS FARM, INC.

MARTIN LEE ALMON AND BARBARA CAROL ALMON

MADISON HILLS FARM, INC.

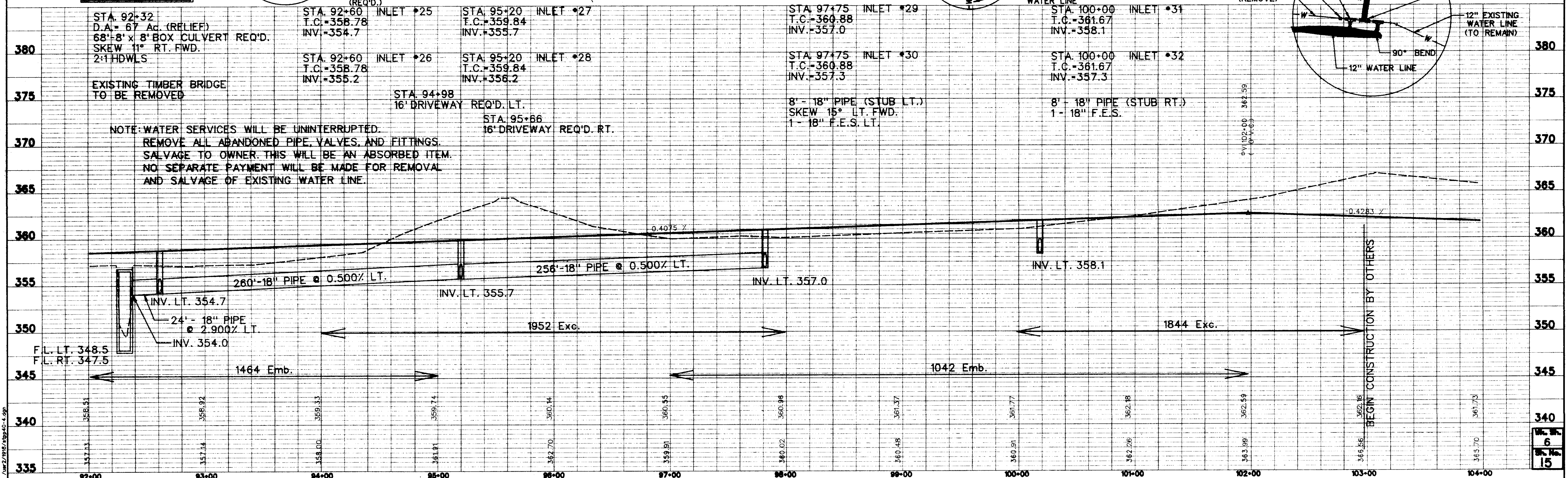
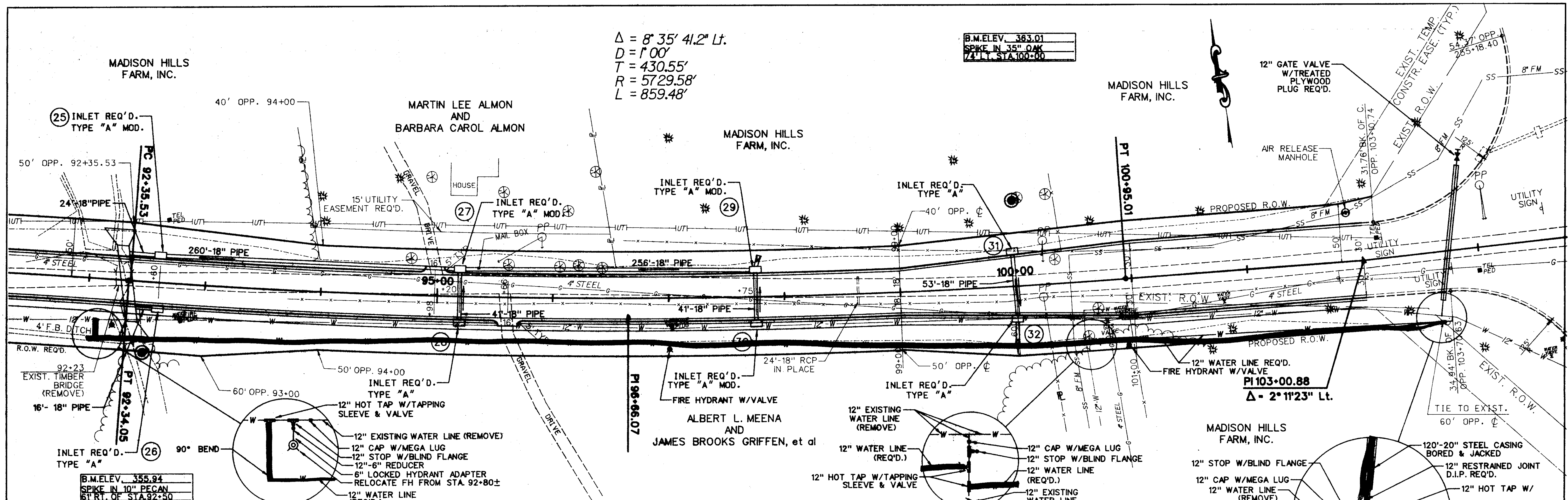
MADISON HILLS FARM, INC.

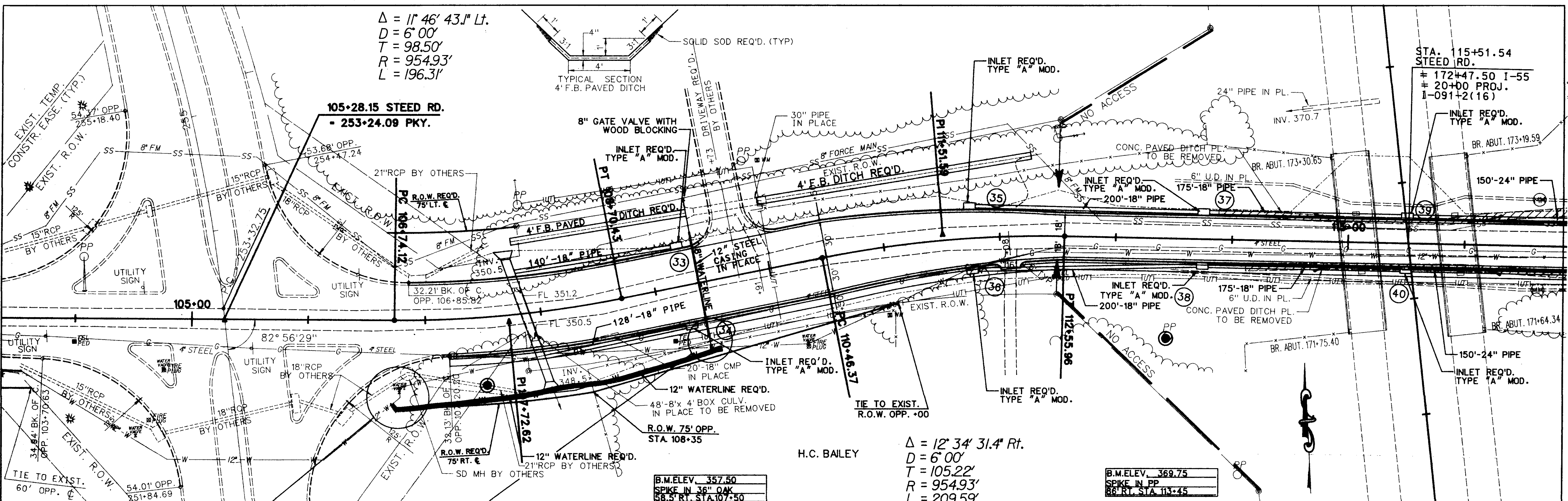
$\Delta = 8' 35' 41.2" Lt.$
 $D = 1'00'$
 $T = 430.55'$
 $R = 5729.58'$
 $L = 859.48'$

B.M. ELEV. 383.01
 SPIKE IN 35" OAK
 7/4" LT. STA. 100.00

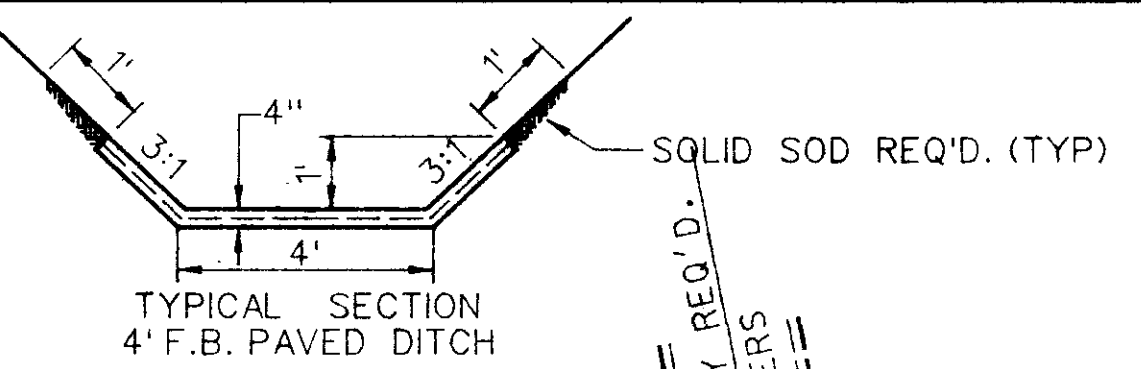
DATE: _____
 BY: _____
 CHECKED: _____
 IN CHARGE: _____
 NO. OF WAYS CHECKED: _____

DATE: _____
 BY: _____
 CHECKED: _____
 IN CHARGE: _____
 NO. OF WAYS CHECKED: _____





$\Delta = 11^\circ 46' 43.1''$ Lt.
 $D = 6' 00''$
 $T = 98.50'$
 $R = 954.93'$
 $L = 196.31'$



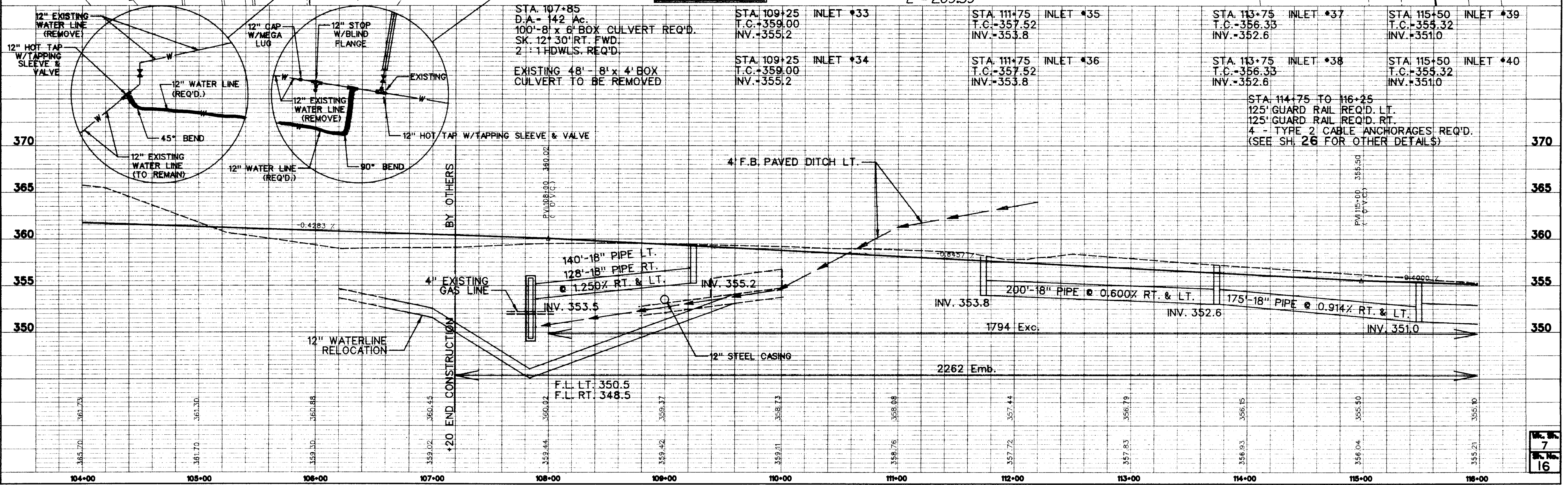
$\Delta = 12^\circ 34' 31.4''$ Rt.
 $D = 6' 00''$
 $T = 105.22'$
 $R = 954.93'$
 $L = 209.59'$

B.M. ELEV. 357.50
 SPIKE IN 36" OAK
 58.5' RT. STA. 107+50

B.M. ELEV. 369.75
 SPIKE IN PP
 86' RT. STA. 113+45

PLAN
 SUPERVISOR
 ENGINEER
 CHECKED
 DATE

PROFILE
 SUPERVISOR
 ENGINEER
 CHECKED
 DATE



STA. 107+85
 D.A. = 142 Ac.
 100' - 8' x 8' BOX CULVERT REQ'D.
 SK. 12' 30" RT. FWD.
 2:1 HDWLS. REQ'D.
 EXISTING 48' - 8' x 4' BOX CULVERT TO BE REMOVED

STA. 109+25 INLET *33
 T.C. +359.00
 INV. +355.2
 STA. 109+25 INLET *34
 T.C. +359.00
 INV. +355.2

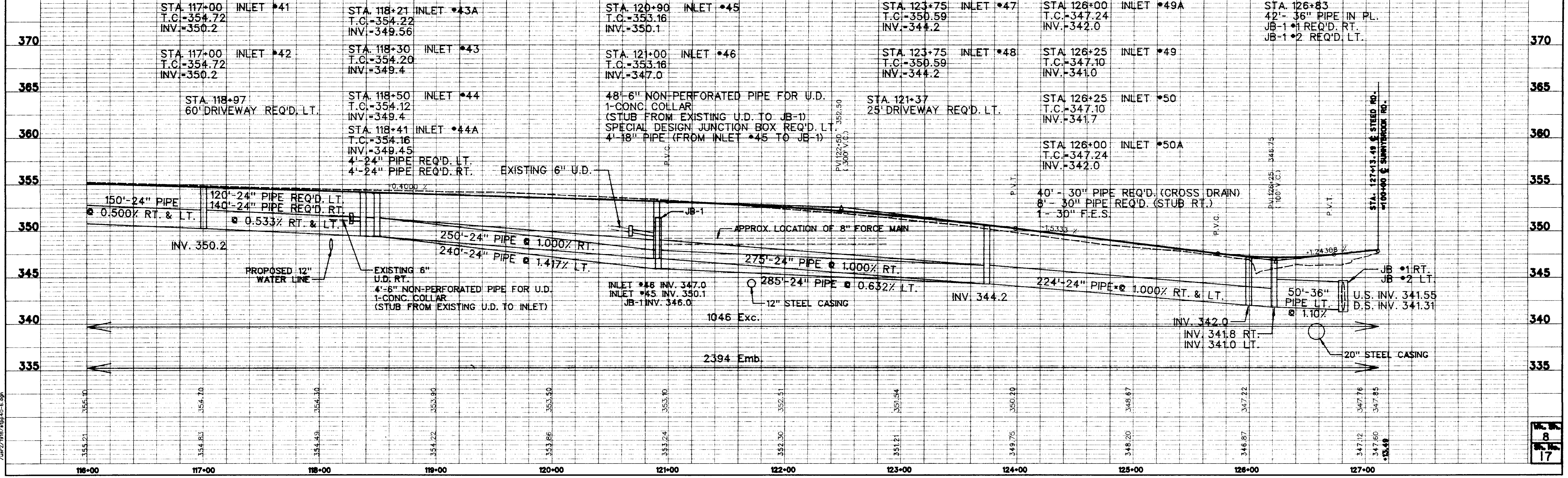
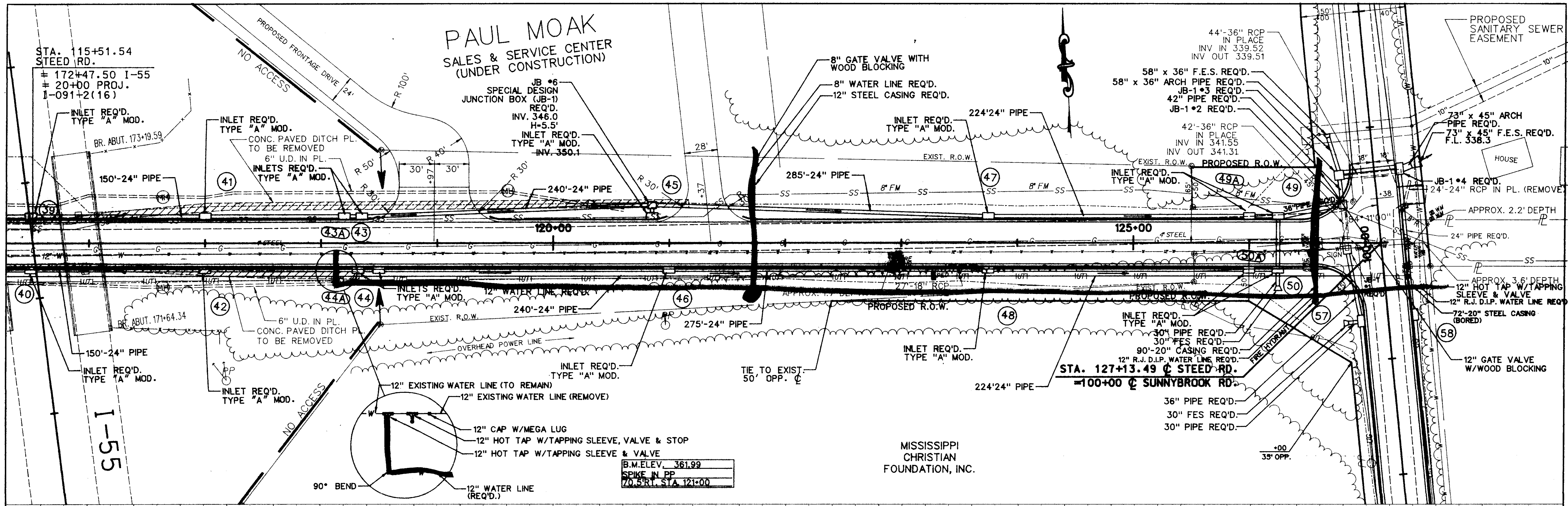
STA. 111+75 INLET *35
 T.C. -357.52
 INV. -353.8
 STA. 111+75 INLET *36
 T.C. -357.52
 INV. -353.8

STA. 113+75 INLET *37
 T.C. -356.33
 INV. -352.6
 STA. 113+75 INLET *38
 T.C. -356.33
 INV. -352.6

STA. 115+50 INLET *39
 T.C. -355.32
 INV. -351.0
 STA. 115+50 INLET *40
 T.C. -355.32
 INV. -351.0

STA. 114+75 TO 116+25
 125' GUARD RAIL REQ'D. LT.
 125' GUARD RAIL REQ'D. RT.
 4 - TYPE 2 CABLE ANCHORAGES REQ'D.
 (SEE SH. 26 FOR OTHER DETAILS)

**PAUL MOAK
SALES & SERVICE CENTER
(UNDER CONSTRUCTION)**



PLAN
DATE: _____
BY: _____
CHECKED: _____
DATE: _____
NO. _____

PROFILE
DATE: _____
BY: _____
CHECKED: _____
DATE: _____
NO. _____